

2018/2019 Polaris Contingency Form

Fax completed form to Lori @ 763-847-8181 **OR** email to lori.buchkowski@polaris.com **OR** mail to:

**Note: Choose only one option for submitting form.
DO NOT submit same form duplicate ways.**

**Polaris Racing
ATTN: Lori
202 W Industrial Park Ave
Rothschild, WI 54474**

PLEASE PRINT CLEARLY

Name _____
Address _____
City _____ State _____ Zip _____
Date of Birth _____
Cell Phone (____) _____
E-mail address _____

Type of Race: SnoCross _____ Hillclimbs _____
Cross Country _____ Ice Ovals _____
Enduro _____

Event Win: (1st, 2nd, 3rd)

Sanctioned By: _____
Location: _____
Date: _____
Class: _____
Model: _____ Year: ('15 -'19 Model Only) _____
Position Placed: _____

Season Championship:

Sanctioned By: _____ # of Events Raced: _____
Class: _____
Model: _____ Year: ('15 -'19 Models Only) _____
Position Placed: _____

I, _____, race official, declare that the snowmobile described on this form has achieved the results described above on this form in the class/classes and/or events also described above. Also, the driver was wearing all safety equipment recommended by the local and/or state/provincial racing association safety regulations and the snowmobile, driver, and equipment meet Polaris contingency requirements. Furthermore, the snowmobile complies with all local and/or provincial/state racing association safety regulations.

Official's Signature: _____ Date: _____ Phone: _____

Driver's Signature: _____ Date: _____ Phone: _____

All contingency forms must be clearly filled out in full and submitted to Polaris Race Department within seven (7) days of race event for payment. Any form received after seven days of race event will be returned.

2018-19 Polaris Contingency Program

- Certain Restrictions Apply
- Must be a minimum of 8 entries that start the final in each class to qualify
- Race Association must be current ISR affiliate
- Race Association must submit full results to Polaris Race Dept. within one week of the event
- Racer must submit completed contingency form to Polaris Race Dept within seven days of race event for payment. A separate contingency form must be submitted for each win being claimed.
- Point Championships will only be paid for overall class results, not a Saturday and Sunday Champion
- For Snow Bike contingency go to Timbersled.com



Sno Cross Event Win - One day Event or Sunday Finals - Listed Classes Only				
Association	Pro Open	Pro Lite	Pro AM Plus 30	Pro AM Women
ISOC National	\$7500/\$5000/\$2500	\$3000/\$2000/\$1000	\$300/\$200/\$100	\$500/\$300/\$200
CSRA	\$1,000	\$500		
ECS	\$750	\$300		
SCMX	\$300	\$200		
ISOC Regional, GNSS	\$300	\$200		

Sno Cross Year End Points Championships				
Association	Pro Open	Pro Lite	Pro AM Plus 30	Pro AM Women
ISOC National	\$10,000	\$5,000	\$750	\$1,000
CSRA	\$2,000	\$1,000		
ECS	\$1,500	\$750		
SCMX	\$500	\$250		
ISOC Regional	\$500	\$250		
ECS, CSRA, ECS TRIPLE CROWN CHAMPION	\$1,000	\$500		

HILLCLIMB				
RMSHA	Stock	Improved Stock	Mod	
Pro - per event	\$500/\$300/\$100	\$300/\$200/\$100	\$300/\$200/\$100	
Pro Masters - per event	\$300	\$200	\$200	
Pro Women - per event	\$300	\$200	\$200	
Pro - King of the Hill	\$800	\$500	\$500	

JACKSON HOLE WORLD CHAMPIONSHIPS				
Pro	Pro Masters	Pro Women	KING OF HILL (Pro Men only)	
\$1500/\$500/\$250	\$750	\$750	\$10,000.00	
\$800/\$400/\$200	\$300	\$300	\$4,000.00	
\$800/\$400/\$200	\$300	\$300	\$4,000.00	

CROSS COUNTRY				
Association	Pro Factory 600	Semi Pro Factory 600	Pro Women Factory 600	I-500 Class
USXC	\$2000/\$1000/\$500	\$750/\$500/\$250	\$300/\$200/\$100	\$500/\$300/\$200
COR POWERSPORTS	\$300/\$200/\$100	\$150/\$100/\$50		
RMR	\$300/\$200/\$100	\$150/\$100/\$50		
USXC 500	\$5000/\$3000/\$2000	\$1000/\$750/\$500	\$500/\$300/\$200	
IRON DOG - Pro Class	\$10,000 - Team Total			

ICE OVALS - ENDURO				
Association	Pro Champ	Pro Mod 600	Factory 600	
Eagle River World Championship	\$5,000		\$1,000	
USSA - ProStar Cup	\$750/\$500/\$250		\$750/\$500/\$250	
Soo-500		\$5,000 Team Total		



2019 600 Indy XC Cross Country ICE Racing settings

All part numbers listed are Polaris part numbers unless otherwise noted.

Fuel: Use non-ethanol 91 octane premium pump gas, select 91-NON fuel curve on vehicles digital dash display

Oil Injection: Use Polaris VES-Extreme synthetic 2-cycle oil (#2883733 -quart) or (#2883732 -gallon)

Clutching Spec: 10-64 weights, 180/320 primary spring, 155/222 secondary spring, 42-degree helix and 3211208 belt. Target RPM is 8350

Clutching: Order the below clutch springs and helix from Venom Products, www.venomproducts.com
1-210135-010 – primary spring 165/327 (option spring), 1-955557 – secondary spring 175/240
(option spring), 1-LW420453 – straight helix 42/44, 1-210135-013 – primary spring 180/320

Order the below secondary clutch spring, weights and drive belt from Polaris

1-7043063 – secondary spring 155/222 1-3211208 – drive belt
3-1321584 – 10/66 weights (option weights) 1-7041988 – primary spring 165/310 (option spring)

Gearing: 22 tooth top gear (Stock)
41 tooth bottom gear (Stock)

Brakes: Replace stock brake rotor and pads with XCR's. 1-2206235 – Brake Rotor XCR, 1-2206251 – brake pads (type81) XCR, 1-5452823 – Cooling scoop (open up side panel vent to match scoop)
Hayes aluminum angled brake lever (#0617001*available from Race Dept.)
Optional Hayes Pro Float Rotor kit is also available from the Polaris Race Dept. (#718001)

Controls: replace the stock kill switch with the push button below and install the below tether asm. There is an open port for the tether under the fuel tank cowling in front of the fuel cap

1-4010311 – push button kill switch 1-4010849 – tether 1-7556212 – tether washer

Windshield: 1-5451234 - windshield, Mid Clear

Tracks: Camso 129" Cobra (#5416604*Stock), Camso 129" Ripsaw2 (#5416585) or Camso 129 Ripsaw1 (#9358R* Camso direct part number)



POLARIS[®]

RACING

Suspension Springs:

IFS: 120lbs/in coil over spring 9" x 1.88" I.D. (#7041701-067)

Front track: 80lb/in coil over spring 6" x 2.25" I.D. (#0617003 *order from Race Dept.)

Rear track: 11lbs/degree torsion springs at 95-degree preload. (#0818005*order from Race Dept.)

Suspension spring preloads: .500" preload on IFS spring, .250" preload on front track spring, Medium/Low on torsion spring preload blocks

Front track shock: light weight internal IFP Walker Evans Racing shock will also be available from the Race Dept., (#0617012) and 85lb/in coil over spring 6" x 1.88" I.D. (#0617008)

Sway Bar: stock Indy .531" sway bar or Optional stiffer .562" sway bar (#0617006 *order from Race Dept.)

Front torque arm: Drill a new hole in the limiter strap to shorten the front arm travel length. Measuring from the top of the bump stop on the rail to the bottom of the torque arm the distance should be 1.625"

Bogie Wheels: replace the two outside stock bogie wheels with the below solid bogie wheels.
2-1590457 – Solid bogie wheel asm

Rear axle: Replace the three stock rear axle wheels with the four solid wheels below. The below spacer and washer is required to install 4 rear axle wheels.
4-1590388-070 – solid rear axle wheels, 1-5333283 – rear axle spacer, 1-7555918 – rear axle washer

Traction Products: Contact Stud Boy Traction products at www.studboytraction.com . (176 stud's minimum are recommended for ice racing) **stud protectors are required*

Stud Protectors: When installing studs, a stud protection kit is required 1-2883572 – stud protection kit

Skis: Order skis from USI at www.usi-skis.com

USI X2 triple threat stage 1 ski (#X2)

USI 301 high performance mount shoe (#po1-hpb)

or

Order skis from C&A Pro at www.caproksis.net

XPT ski (#0420)

Mounting kit (#76000224)



Over structure Reinforcement: It is recommended to install 6061-T6 aluminum tube (O.D. 1.125" wall thickness of .058") inside of the stock Carbon Fiber over structure tubes. Refer to Indy over structure bracing tech tip for more details. (<https://snowmobiles.polaris.com/en-us/team-polaris/racer-resources/>)

Rules: for the rules pertaining to this class go to the International Snowmobile Racing website, www.isrracing.org

The suspension settings listed here are the starting point. Adjust suspension calibrations to course/ice conditions to maximize the vehicles handling.

To order any of the Polaris Parts listed on this sheet contact Brad Seavers at the Polaris Race Dept. 715-355-3008 or bradley.seavers@polaris.com

For any race setup questions contact Ben Hayes at the Polaris Race Dept. 715-355-5157 or Ben.hayes@polaris.com



POLARIS®

RACING

Cross Country Indy **Rough Ice IFS** shock settings

Shock part number: 7045064

Oil side spacer: .300"

Piston: Black 3 port, .052" bleed hole

IFP height: 2.0"

Nitrogen PSI: 200

Jounce bumper: .750" tall (STK)

*Replace stock needle shaft with (#1800561) solid shock shaft

*Remove internal needle from piggyback

Compression clickers: Low speed: 7 clicks out from stiff

Compression

1.300 x 8

1.250 x 8

.800 x 10

1.200 x 8

1.100 x 8

1.000 x 8

.800 x 8

.700 x 10

.625 x .063 washer

.875 x .090 plate

Rebound

1.100 x 6

.800 x 10

1.000 x 6

.900 x 6

.800 x 6

.700 x 6

(x2) .625 x .063 washer

torque shim stack nut to 140in/lbs.



POLARIS[®]

RACING

Cross Country Indy **Rough Ice front track** shock settings

Shock part number: 7044878

Oil side spacer: 2.0"

Piston: Black 6 port, .073" bleed hole

IFP height: 1.750"

Nitrogen PSI: **150**

Jounce bumper: remove jounce and plastic scraper

Compression clickers: Low speed: 8 clicks out from stiff

Compression

1.550 x 8

1.000 x 8

1.550 x 8

1.200 x 8

1.450 x 8

1.200 x 8

1.000 x 8

.900 x 8

.800 x 8

.600 x 15

1.000 x .075 washer

Rebound

1.300 x 8

.700 x 8

1.100 x 12

.900 x 10

.700 x 8

.600 x 15

.750 x .065 washer

torque shim stack nut to 15ft/lbs.



POLARIS[®]

RACING

Cross Country Indy **Rough Ice rear track** shock settings

Shock part number: 7044819

Oil side spacer: .700"

Piston: black 6 port, .052" bleed hole

IFP height: 2.0"

Nitrogen PSI: 200

***Replace stock needle shaft with (#0818006) welded needle short shaft (*must order from Polaris Race Dept.)**

Compression clickers: Low speed: 4 clicks out from stiff

Compression

1.300 x 8(x4)

1.300 x 6

1.250 x 8

.900 x 8

1.200 x 8

1.100 x 8

.900 x 8

.700 x 10

.625 x .063 washer

.875 x .090 washer

Rebound

1.100 x 8

1.000 x 8

.900 x 8

.800 x 8

.700 x 10

(x2).625 x .063 washer

torque shim stack nut to 140in/lbs.



POLARIS®

RACING

Cross Country Indy **Plowed Smooth Ice IFS** shock settings

Shock part number: 7044564

Oil side spacer: .600"

Piston: Black 3 port, .052" bleed hole

IFP height: 2.0"

Nitrogen PSI: 200

Jounce bumper: .750" tall (STK)

*Replace stock needle shaft with (#1800561) solid shock shaft

*Remove internal needle from piggyback

Compression clickers: Low speed: 7 clicks out from stiff

Compression

1.300 x 8
1.250 x 8
.800 x 10
1.200 x 8
1.100 x 8
1.000 x 8
.800 x 8
.700 x 10
.625 x .063 washer
.875 x .090 plate

Rebound

1.100 x 6
.800 x 10
1.000 x 6
.900 x 6
.800 x 6
.700 x 6
(x2) .625 x .063 washer

torque shim stack nut to 140in/lbs.



POLARIS®

RACING

Cross Country Indy Plowed Smooth Ice front track shock settings

Shock part number: 7044878

Oil side spacer: 2.0"

Piston: Black 6 port, .073" bleed hole

IFP height: 1.750"

Nitrogen PSI: **150**

Jounce bumper: remove jounce and plastic scraper

Compression clickers: Low speed: 8 clicks out from stiff

Compression

1.550 x 8

1.000 x 8

1.550 x 8

1.200 x 8

1.450 x 8

1.200 x 8

1.000 x 8

.900 x 8

.800 x 8

.600 x 15

1.000 x .075 washer

Rebound

1.300 x 8

.700 x 8

1.100 x 12

.900 x 10

.700 x 8

.600 x 15

.750 x .065 washer

torque shim stack nut to 15ft/lbs.



POLARIS[®]

RACING

Cross Country XCR Plowed Smooth Ice rear track shock settings

Shock part number: 7044563

Oil side spacer: 1.0"

Piston: black 6 port, .052" bleed hole

IFP height: 2.0"

Nitrogen PSI: 200

***Replace stock needle shaft with (#0818006) welded needle short shaft (*must order from Polaris Race Dept.)**

Compression clickers: Low speed: 4 clicks out from stiff

Compression

1.300 x 8(x4)

1.300 x 6

1.250 x 8

.900 x 8

1.200 x 8

1.100 x 8

.900 x 8

.700 x 10

.625 x .063 washer

.875 x .090 washer

Rebound

1.100 x 8

1.000 x 8

.900 x 8

.800 x 8

.700 x 10

(x2).625 x .063 washer

torque shim stack nut to 140in/lbs.



2019 600 Indy XC Cross Country Terrain Racing settings

All part numbers listed are Polaris part numbers unless otherwise noted.

Fuel: Use non-ethanol 91 octane premium pump gas, select 91-NON fuel curve on vehicles digital dash display

Oil Injection: Use Polaris VES-Extreme synthetic 2-cycle oil (#2883733 -quart) or (#2883732 -gallon)

Clutching Spec: 10-64 weights, 180/320 primary spring, 155/222 secondary spring, 42-degree helix and 3211208 belt. Target RPM is 8350

Clutching: Order the below clutch springs and helix from Venom Products, www.venomproducts.com
1-210135-010 – primary spring 165/327 (option spring), 1-955557 – secondary spring 175/240
(option spring), 1-LW420453 – straight helix 42/44, 1-210135-013 – primary spring 180/320

Order the below secondary clutch spring, weights and drive belt from Polaris
1-7043063 – secondary spring 155/222 1-3211208 – drive belt
3-1321584 – 10/66 weights (option weights) 1-7041988 – primary spring 165/310 (option spring)

Gearing: 22 tooth top gear (Stock) 41 tooth bottom gear (Stock)

Brakes: Replace stock brake rotor and pads with XCR's. 1-2206235 – Brake Rotor XCR, 1-2206251 – brake pads (type81) XCR, 1-5452823 – Cooling scoop (open up side panel vent to match scoop)
Hayes aluminum angled brake lever (#0617001*available from Race Dept.)
Optional Hayes Pro Float Rotor kit is also available from the Polaris Race Dept. (#718001)

Controls: replace the stock kill switch with the push button below and install the below tether asm. There is an open port for the tether under the fuel tank cowling in front of the fuel cap
1-4010311 – push button kill switch 1-4010849 – tether 1-7556212 – tether washer

Windshield: 1-5451234 - windshield, Mid Clear

Tracks: Camso 129" Cobra (#5416604*Stock) or Camso 129" Ripsaw2 (#5416585)



POLARIS[®]

RACING

Suspension Springs:

IFS: 120lbs/in coil over spring 11.5" x 1.88" I.D. (#7041575-067)
Front track: 80/250lb/in coil over spring 8" x 2.25" I.D. (Stock)
Rear torsion: for racers 180lbs and lighter use 7045208-329 & 7045207-329
(13lin/lbs@80degree) torsion springs. For racers 185lbs and heavier use 7045209-329 & 7045210-329
(14in/lbs@70degree)

Suspension spring preloads: .500" preload on IFS spring, .325" preload on front track spring,
Medium/Medium on torsion spring preload blocks

Sway Bar: 1-5252629-329 – sway bar (.438") 4- 5437831 - Bushings

Front torque arm: Order the below parts to install a 2nd limiter strap to the front torque arm.
1-5414733-limiter strap, 2-7518953-bolts, 4-7556175-washers, 2-7547332-nylock nuts

Bogie Wheels: replace the two outside stock bogie wheels with the below solid bogie wheels.
2-1590457 – Solid bogie wheel as

Rear axle: Replace the three stock rear axle wheels with the four solid wheels below. The below spacer
and washer is required to install 4 rear axle wheels.
4-1590388-070 – solid rear axle wheels, 1-5333283 – rear axle spacer, 1-7555918 – rear axle washer

Traction Products: Contact Stud Boy Traction products at www.studboytraction.com . **stud protectors
are required*

Stud Protectors: When installing studs, a stud protection kit is required 1-2883572 – stud protection kit

Tunnel Bracing: Install Tunnel Race brace kit (*Available from Polaris Race Dept. #0818007).

Rear Coupling Bracing: Install rear coupling block reinforcement cross shaft (*Available from Polaris
Race Dept. #0818008).

Skis: Order skis from USI at www.usi-skis.com
USI SPX ski (#SPX-YW)
USI 301 high performance mount shoe (#po1-hpb)
or
Order skis from C&A Pro at www.caproskis.net
XCS ski (#0410)
Mounting Kit (#76000224)



Over structure Reinforcement: It is recommended to install 6061-T6 aluminum tube (O.D. 1.125" wall thickness of .058") inside of the stock Carbon Fiber over structure tubes. Refer to Indy over structure bracing tech tip for more details. (<https://snowmobiles.polaris.com/en-us/team-polaris/racer-resources/>)

Rules: for the rules pertaining to this class go to the International Snowmobile Racing website, www.isrracing.org

***Shock valving and settings coming soon**

To order any of the Polaris Parts listed on this sheet contact Brad Seavers at the Polaris Race Dept. 715-355-3008 or bradley.seavers@polaris.com

For any race setup questions contact Ben Hayes at the Polaris Race Dept. 715-355-5157 or Ben.hayes@polaris.com



2019 600 Indy XC Iron Dog Upgrade Parts

*The below parts are recommended for Iron Dog racers to install

Windshield: 1- 2883078 - windshield, XTall, Clear, xtra thick

Controls: replace the stock kill switch with the push button below and install the below tether asm. There is an open port for the tether under the fuel tank cowling in front of the fuel cap

1-4010311 – push button kill switch 1-4010849 – tether 1-7556212 – tether washer

Brakes: Replace stock brake rotor and pads with XCR's. 1-2206235 – Brake Rotor XCR, 1-2206251 – brake pads (type81) XCR, 1-5452823 – Cooling scoop (open up side panel vent to match scoop)

Hayes aluminum angled brake lever (#0617001*available from Race Dept.)

Optional Hayes Pro Float Rotor kit is also available from the Polaris Race Dept. (#718001)

Bogie Wheels: replace the two outside stock bogie wheels with the below solid bogie wheels.

2-1590457 – Solid bogie wheel asm

Rear axle: Replace the three stock rear axle wheels with the four solid wheels below. The below spacer and washer is required to install 4 rear axle wheels. Replace the stock rear axle with the below 7075 aluminum axle. Replace the two outside plastic axle spacers with the below billet aluminum spacers

4-1590388-070 – solid rear axle wheels, 1-5333283 – rear axle spacer, 1-7555918 – rear axle washer

1- 5142727 – 7075 aluminum rear axle, 2- 5139176 – billet axle spacer

Front torque arm: The below HD front torque arm is designed to work with different limiter straps, listed below. The below lower limiter strap bar will give you the ability to quick adjust limiter strap length.

1-1544212-329 – HD front torque arm,

2- 5417045 – limiter straps, 2-7519238 – limiter strap bolts, 1- 5142726 – adjustable limiter cross bar

Stud Protectors: When installing studs, a stud protection kit is required, 1-2883572 – stud protection kit



Tunnel Bracing: Install Tunnel Race brace kit (*Available from Polaris Race Dept. #0818007).

Rear Coupling Bracing: Install rear coupling block reinforcement cross shaft (*Available from Polaris Race Dept. #0818008). Install billet rear coupling blocks, 2-5142728 – billet coupling blocks

Over structure: Replace stock Carbon Fiber over structure with aluminum over structure, 1- 1024052 – aluminum over structure & 2-5633122 – spacers, tube

Jackshaft: Replace stock jackshaft with solid jackshaft, 1-1333605 – solid jackshaft

To order any of the Polaris Parts listed on this sheet contact Brad Seavers at the Polaris Race Dept. 715-355-3008 or bradley.seavers@polaris.com)

2018/2019 POLARIS ENGINEERED LUBRICANTS RIDER SUPPORT AGREEMENT

As a Polaris Engineered Lubricants Rider you agree to the following:

1. By submitting the racer application you have consented to abide by the terms of the Polaris Engineered Rider Support Program Agreement.
2. If you are under 18 years old, the application must be filled out by your parent or legal guardian and must include their signature and contact information.
3. Rider will use, support and endorse Polaris Engineered Lubricant products. Rider will not use or endorse any other oil brand within the contractual sponsorship timeline.
4. Rider authorizes Polaris Engineered Lubricants to use his/her name, information and photographs for advertising and promotional purposes in various media applications throughout his/her period of this Rider Support agreement.
5. Polaris Engineered Lubricants retains in perpetuity the ownership of any photographs, results, informational bios, and the right to publish any other rider assets for promotional purposes.
6. Rider must display Polaris Engineered Lubricants decals and/or logos, as provided by Polaris Engineered Lubricants, prominently on racer vehicle(s) and any and all transport(s). Rider must use Polaris Engineered Lubricants approved logos on all vehicles.
7. Rider agrees to promote/advertise Polaris Engineered Lubricants to the best of their ability to any press/peers, and to demonstrate sportsmanlike conduct at all times, on and off the track.
8. Product received under the terms of this Agreement are solely for use of racer and/or race vehicles.
9. Promotional material provided by Polaris Engineered Lubricants shall be displayed on the racer's Polaris Snowmobile, ATV, ORV, trailer(s), and pit area for the entire term of this Agreement.
10. Rider will list Polaris Engineered Lubricants as an official sponsor on all race entries and on any promotional autograph cards or posters. Racer will mention Polaris Engineered Lubricants in all editorial interviews, podium interviews, and any multimedia sites maintained by the sponsored rider; including but not limited to Instagram, Facebook, racer/team websites and forum boards.
11. Rider agrees to send Polaris Engineered Lubricants a detailed summary of attending events, results, and any other promotional opportunities throughout the agreed term of contract. Updates should be sent within 1 week of the attending event.

Polaris Engineered Lubricants will provide you, the support rider, with Polaris Engineered Lubricant product at a *discount of 50% off retail (maximum of \$2500/year) on any product listed in the rider support price list. Rider must order full case quantities (Example: 1 case of VES gallons = Qty 4). Cost of shipping and all applicable state or local taxes is to be paid for by the support rider at time of order. Polaris Engineered Lubricants will provide the rider with Polaris Engineered Lubricant stickers for all race vehicles.

*Race Fuel discounted at 25% off Retail

Please fill out ALL information below and return this original signed agreement and current race resume to the address listed below. You must provide a physical street address for all shipments— **no P.O. Boxes.**

In signing this agreement, I understand the conditions as outlined above and understand that this agreement does not constitute a legal contract legally binding myself (the rider) to Polaris Engineered Lubricants in any way. I agree to hold Polaris Engineered Lubricants harmless from any claim, accident, injury, or damage incurred through my use of Polaris Lubricant products. I also understand that Polaris Engineered Lubricants reserves the rights to cancel or modify this agreement at any time. This agreement is valid through December 31, 2019.

ASSUMPTION OF RISKS AND GENERAL RELEASE.

(a) ATHLETE HEREBY EXPRESSLY ACKNOWLEDGES THAT (I) THE SPORT AND SPORT-RELATED ACTIVITIES ARE VERY DANGEROUS, (II) UNANTICIPATED AND UNEXPECTED DANGERS MAY ARISE DURING HIS PARTICIPATION IN SUCH ACTIVITIES, WHETHER IN COMPETITION, IN PROMOTION ACTIVITIES OR OTHERWISE, AND (III) HE MAY SUSTAIN BODILY INJURY, DEATH OR PROPERTY DAMAGE IN CONNECTION WITH HIS PARTICIPATION IN SUCH ACTIVITIES. RECOGNIZING THESE RISKS AND DANGERS, ATHLETE HEREBY ASSUMES ALL RISKS OF LOSS, DAMAGE OR INJURY (INCLUDING DEATH) TO HIS PERSON AND PROPERTY THAT HE MAY SUSTAIN DURING HIS PARTICIPATION IN THE SPORT AND SPORT-RELATED ACTIVITIES IN CONNECTION WITH THIS AGREEMENT.

(b) In furtherance of the above assumption or risks, Athlete, for himself, his parents, his spouse, dependents, heirs, executors, representatives, successors, assigns and agents, and each of them, does hereby fully remise, release and forever discharge Polaris Engineered Lubricants, and each of Polaris' representatives, predecessors, successors, assigns, officers, agents, directors, stockholders, partners, owners, servants, employees and affiliated and subsidiary corporations, partnerships or companies, past and present, and each of them, of and from any and all manner of actions, suits, liens, debts, dues, damages, claims, sums of money, obligations, liabilities, judgments, bonds, executions and demands of every nature, kind and description whatsoever, whether known or unknown, and whether suspected or unsuspected, either at law, in equity or otherwise, which may have arisen under and by virtue of the laws of any jurisdiction, which Athlete has had or claims to have had or now has or claims to have against Polaris, which arise out of or relate in any way to the Sport or Sport-related activities performed by him in connection with his obligations under this Agreement.

(c) Athlete has executed this release and discharge of all claims freely and without restraint or reservation of any kind or nature. Athlete has read and understands each and every item and condition set forth in this Agreement.

Accepted by Rider: _____ **Date:** _____

Rider Address: _____ **City:** _____ **State:** _____ **Zip:** _____

Phone Number: _____

Email: _____

Parent or Guardian: _____ **Date:** _____

Necessary if rider is under 18 years of age

Polaris Engineered Lubricants

900 Mendelssohn Ave N

Golden Valley, MN 55427

Phone: (952) 913-2774

Email: Matt.Olund@Polaris.com

2019 Indy XC Tunnel Brace Kit

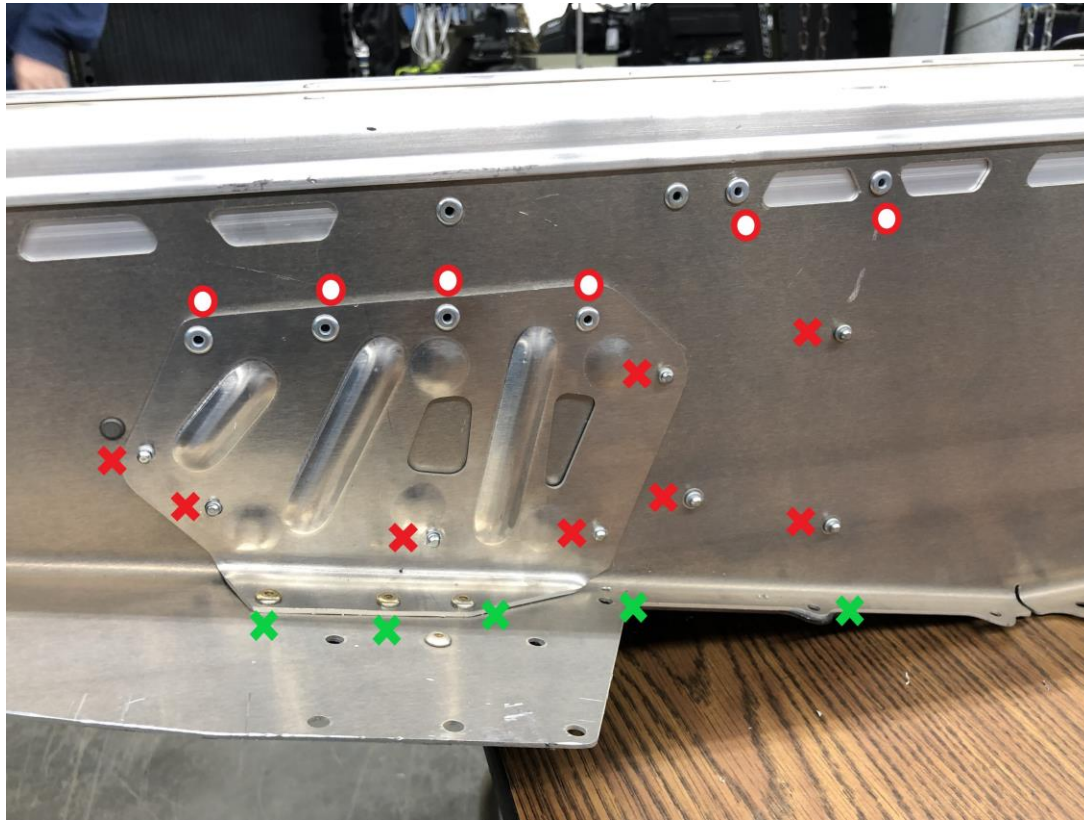
Available from the Polaris Race Dept. #0818007

Below LH picture shows rivet layout/direction for all 4 plates. The red X's show the silver rivets inserted from the inside of the tunnel. The red O's show the silver rivets inserted from the outside of the tunnel. The Green X's show the placement of the gold rivets.

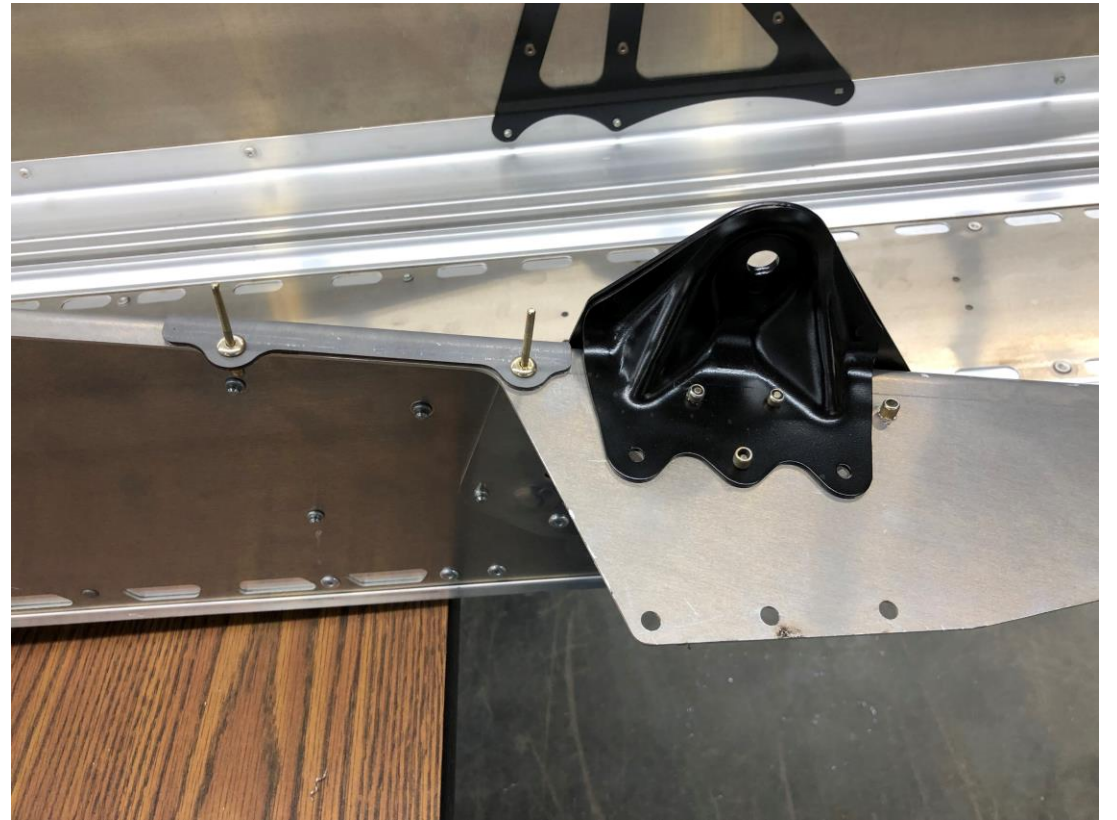
The below rivets are required to correctly install all 4 plates:

28-7661973 – silver rivets

10-7661637 – gold rivets



Below pictures are of the inside tunnel plates



Indy XC Carbon Fiber Over Structure Reinforcement

Recommended when Racing the 2019 Indy XC

Order 3' of 1.125" x .058" x 1.009" 6061-T6 aluminum tube from [onlinemetals.com](https://www.onlinemetals.com) (Part number #6996)

- 1.) Remove complete over structure assembly from vehicle.
- 2.) Drill lower aluminum rivet out from bottom of carbon fiber tube. Clean off any glue from around the rivet.
- 3.) Slide aluminum tube into carbon fiber tube and make sure aluminum tube goes past rivet hole. May have to use slight force due to glue build up inside of carbon fiber tube.
- 4.) Mark the tube length, lower rivet hole and both upper mounting holes.
- 5.) Remove the tube. Drill holes to size. Cut tube to overall length.
- 6.) Re-install aluminum tube. Use 3/16" aluminum rivet to secure aluminum tube to carbon fiber tube and aluminum casting.
- 7.) .060" must be removed from both sides of the tube insert to fit into the smaller I.D.
- 8.) Grind radius on tube inserts to match inner radius of aluminum tube
- 9.) Install tube inserts into over structure and re-install onto vehicle

Installing aluminum tube for overall length and marking hole locations



Aluminum tube cut and drilled. Notice lengths between each side may not be the same due to excess glue build up inside. Ready for Re-install



Tube inserts machined down and ground to fit inside aluminum tube



Reinforcement complete and ready for re-install on vehicle

