

MODEL

RJ33-C



## CREPE MAKER

[customerservice@chefman.com](mailto:customerservice@chefman.com)

888.315.6553

1 YEAR LIMITED WARRANTY

CUSTOMER SERVICE



VISIT **CLUBCHEFMAN.COM** FOR RECIPES, VIDEO TUTORIALS  
AND TIPS TAILOR-MADE FOR YOUR CHEFMAN CREPE MAKER.



## **READ ALL INSTRUCTIONS BEFORE USE**

For your safety and continued enjoyment of this product, always read the instruction manual before using.

# Contents

- 1 Introduction
- 2 Safety Instructions
- 5 Features
- 7 Operating Instructions
- 12 Cleaning and Maintenance
- 13 Troubleshooting
- 14 Notes
- 15 Terms and Conditions
- 16 Warranty Card

# Introduction

## Congratulations!

You have made an excellent choice with the purchase of this quality Chefman® product. By doing so you now have the assurance and peace of mind which comes from purchasing a product that has been manufactured to the highest standards of performance and safety, supported by the high quality standards of Chefman®.

We want you to be completely satisfied with your purchase so this Chefman® product is backed by a comprehensive manufacturer's 1-year warranty and an outstanding after sales service through our dedicated Helpline.

We hope you will enjoy using your purchase for many years to come.

If you require technical support or in the unlikely event that your purchase is faulty please telephone our Helpline for immediate assistance. Faulty product claims made within the 1-year warranty period will be repaired or replaced free of charge provided that you have satisfactory proof of purchase (keep your receipt). This guarantee is in addition to your statutory rights. Your statutory rights are not affected. This limited warranty does not apply in cases of damage caused by accident, improper use, abuse and force majeure.

This warranty gives you specific legal rights. You may have other legal rights that vary depending on where you live. Some states or provinces do not allow limitations on implied warranties or special, incidental, or consequential damages, so the foregoing limitations may not apply to you.

This limited warranty will be invalidated if the appliance is tampered with in any way whatsoever. In case of questions or technical problems please call the following toll-free help line number: 888-315-6553, Monday – Friday 9am to 5pm EST.

If the appliance has to be returned to us, it must be packed correctly as we cannot accept any responsibility for damage caused in transit. We recommend you use a traceable, insured delivery service.

# SAFETY INSTRUCTIONS

## IMPORTANT SAFEGUARDS

### THIS APPLIANCE IS FOR HOUSEHOLD USE ONLY.

**WARNING:** When using electrical appliances especially when children are present, basic safety precautions should always be followed to reduce the risk of fire, electric shock, and/or injury to persons, including the following:

1. Make sure the voltage in your outlet is the same as the voltage indicated on the appliance's rating label.
2. Always turn the power off at the power outlet before you insert or remove a plug. Remove by grasping the plug-do not pull on the cord.
3. Turn the power off and remove the plug when the appliance is not in use and before cleaning.
4. Do not use your appliance with an extension cord unless this cord has been checked and tested by a qualified technician or service person.
5. Close supervision is necessary when your appliance is being used by children or people with disabilities.
6. Young children should be supervised to ensure that they do not play with the appliance.
7. Never leave an appliance unattended while in use.
8. Do not use an appliance for any purpose other than its intended use.
9. Do not place an appliance on or near a hot gas flame, electric element or any other appliance.
10. Do not let the power cord of an appliance hang over the edge of a table or countertop or touch any hot surfaces.
11. Do not operate any appliance that has malfunctioned or has been damaged in any manner. In order to avoid the risk of an electric shock, never try to repair the appliance yourself. Take it to an authorized service station for examination and repair.
12. Do not use outdoors or for commercial purposes.
13. Unplug the unit when finished using.
14. Do not immerse the appliance in water or any other liquid.

## SAVE THESE INSTRUCTIONS

### THIS APPLIANCE IS FOR HOUSEHOLD USE ONLY.

# SAFETY INSTRUCTIONS

## SHORT CORD INSTRUCTIONS

- a. This unit includes a short power-supply cord in order to reduce risks resulting from becoming entangled in or tripped over a longer cord.
- b. Longer extension cords are available and may be used if care is exercised in their use.
- c. If extension cord is used:
  1. The marked electrical rating of the extension cord should be at least as great as the electrical rating of the appliance;
  2. If the appliance is of the grounded type the extension cord should be a grounding type 3-wire cord; and
  3. The longer cord should be arranged that it will not drape over the counter top or tabletop where it can be pulled on by children or tripped over.

## LINE CORD SAFETY TIPS

1. Never pull or yank on cord or the appliance.
2. To insert plug, grasp it firmly and guide it into outlet.
3. To disconnect appliance, grasp plug and remove it from outlet.
4. Before each use, inspect the line cord for cuts and/or abrasion marks. If any are found, this indicates that the appliance should be serviced and the line cord replaced. Please call Customer Service.
5. Never wrap the cord tightly around the appliance, as this could place undue stress on the cord where it enters the appliance and cause it to fray and break.

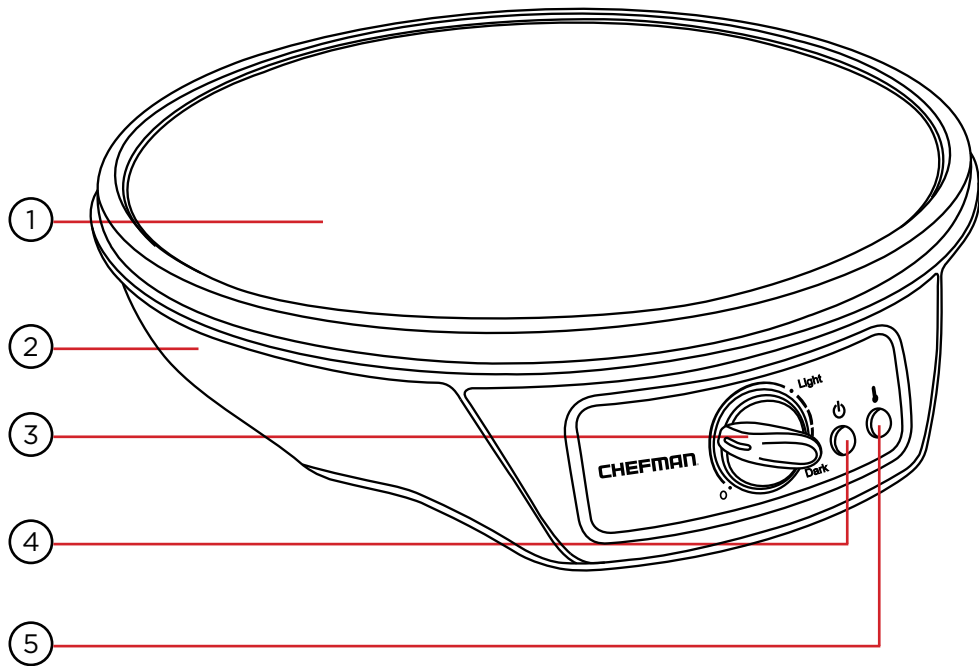
## **DO NOT OPERATE APPLIANCE IF THE LINE CORD SHOWS ANY DAMAGE OR IF APPLIANCE WORKS INTERMITTENTLY OR STOPS WORKING ENTIRELY.**

**CAUTION:** To ensure continued protection against risk of electric shock, connect to properly grounded outlets only.

**IMPORTANT:** During the first few minutes of initial use, you may notice smoke and/or a slight odor. This is normal and should quickly disappear. It will not recur after appliance has been used a few more times.

This appliance is not intended for use by persons (including children) with reduced physical, sensory or mental capabilities, or lack of experience and knowledge, unless they have been given supervision or instruction concerning use of the appliance by a person responsible for their safety.

# Features



- 1. NON-STICK PLATE
- 2. BASE
- 3. TEMPERATURE CONTROL KNOB
- 4. POWER LIGHT
- 5. READY LIGHT

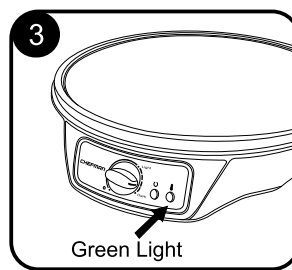
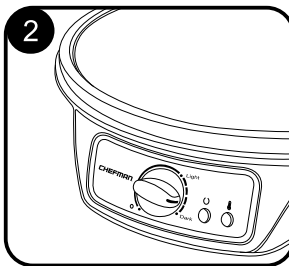
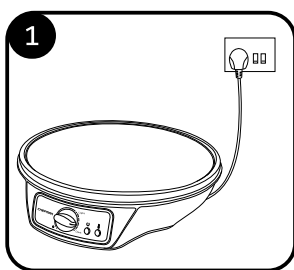
# Operating Instructions

## Before First Use

- Before using the appliance for the first time, remove any promotional materials and packaging materials, and check that the cooking plate is clean and free of dust.
- Wipe with a damp cloth or sponge.
- For best results, pour a teaspoon of vegetable oil on to the non-stick plate. Spread over with an absorbent kitchen towel and wipe off any excess oil.

**NOTE:** When your appliance is heated for the first time, it may emit slight smoke or odor. This is normal and does not affect the safety of your appliance.

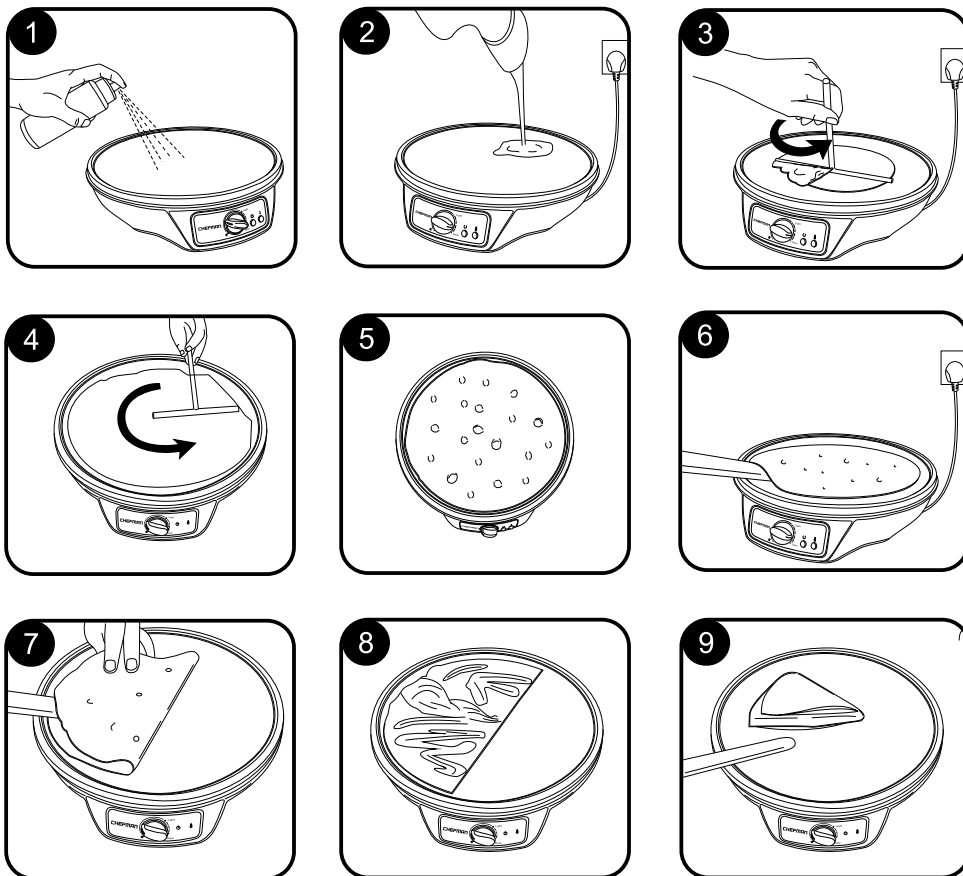
- Place the unit on a level surface making sure it is not in contact with a wall, corner or curtains.
- Take care to prevent water from running into the appliance.



1. Plug in your unit and the orange power light will come on.
2. Preheat the crepe maker by turning the temperature control knob to MAX setting.
3. The green ready light will come on when the unit is at cooking temperature.



# Operating Instructions

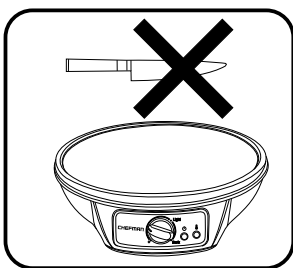


## Using Your Crepe Maker

1. For best results, lightly spray the cooking plates with a cooking oil spray before using. This will assist in the removal of the crepes after cooking.
2. Pour the batter to one side of the crepe maker.
3. Pull the batter in a circular motion using the batter spreader.
4. Make sure to cover the whole plate with the crepe batter.

# Operating Instructions

5. Cook on one side for about 45 seconds until the surface is no longer liquid and the crepe can be moved slightly
6. Using the wooden spatula flip the crepe over and cook another 45 seconds.
7. When both sides of crepe are cooked, slide the wooden spatula underneath the crepe and quickly flip in half.
8. Fill your crepes with your favorite fruit or fillings.



**IMPORTANT: Never cut crepes on the baking plate. Use only heatproof wooden, rubber, or plastic utensils to avoid scratching the nonstick coating.**

9. Fold the crepe over and remove crepe to a wire rack and allow to cool slightly before stacking on a plate. Repeat as needed, stacking crepes layered between sheets of wax paper.

**NOTE:** Adjust the temperature as needed after the first crepe is done.

10. Cover stack with foil and place in a 200° oven to keep warm.

# Cleaning and Maintenance

- Always turn off the power and remove the plug before cleaning.
- The cooking plate are coated with non-stick cooking surface, therefore little cleaning is required. Simply wipe cooking plate over with a damp cloth.
- Do not use abrasive scouring pads or cleaners.
- Do not place in the dishwasher.
- Before next use, lightly grease the cooking plate for easy removal of cooked crepes.

## Storage

- Always unplug the appliance before storage.
- Always make sure the appliance is cool and dry before storing.

## This image shows a single sheet of white paper with horizontal blue or grey ruling lines. The lines are evenly spaced and run across the width of the page. There are approximately 20 lines visible. The paper has a slight shadow on its right side, suggesting it's resting on a surface.

## Notes

This image shows a single sheet of white paper with horizontal blue or grey ruling lines. The lines are evenly spaced and run across the width of the page. There are no margins, text, or other markings on the paper.

# Terms & Conditions

## Limited Warranty

CHEFMAN® LLC warrants, subject to the conditions stated below, that from the date of purchase, this product will be free from mechanical defects for a period of ONE (1) year. CHEFMAN® LLC, at its option, will repair or replace this product found to be defective during the warranty period. Should this product become defective by reason of improper workmanship or material defect during the specified warranty period, CHEFMAN® LLC will repair or replace the same effecting all necessary parts replacements for a period of one year from the date of purchase. If product is no longer available we will replace it with a product of equal value. Transportation charges on parts, or products in whole, submitted for repair or replacement, under this warranty, must be borne by the purchaser. This warranty is void if the product is used for other than single-family household use or subjected to any voltage and waveform other than as specified on the rating label (e.g., 120V - 60 Hz).

This warranty is available to consumers only. You are a consumer if you own a CHEFMAN® product that was purchased at retail for personal, family or household use. Except as otherwise required under applicable law, this warranty is not available to retailers or other commercial purchasers or owners.

**CONDITIONS:** This warranty is valid for the original USA and Canada retail purchaser from the date of initial retail purchase and is not transferable. Keep the original sales receipt. Proof of purchase is required to obtain warranty service or replacement. Dealers, service centers, or retail stores do not have the right to alter, modify or in any way, change the terms and conditions of this warranty. Warranty registration is not necessary to obtain warranty on CHEFMAN® LLC Products. Save your proof of purchase receipt.

**ABOUT YOUR PRODUCT WARRANTY:** Most warranty repairs are handled routinely, but sometimes requests for warranty service may not be appropriate. For example, warranty service would NOT apply if the product damage occurred because of misuse, lack of routine maintenance, shipping, handling, 3rd party warehousing or improper installation. Similarly, the warranty is void if the manufacturing date or the serial number on the product has been removed or the equipment has been altered or modified. During the warranty period, the authorized service dealer, at its option, will repair or replace any part that, upon examination, is found to be defective under normal use and service.

**NORMAL WEAR:** This warranty does not cover normal wear of parts or damage resulting from any of the following: negligent use or misuse of the product; improper voltage or current; use contrary to the operation instructions; deviation from instructions regarding storage and transportation; repair or alteration by anyone other than CHEFMAN® LLC or an authorized service center. Further, the warranty does not cover Acts of God, such as fire, flood, hurricanes and tornadoes. CHEFMAN® LLC shall not be liable for any incidental or consequential damages caused by the breach of any express or implied warranty. Except to the extent prohibited by applicable law, any implied warranty of merchantability or fitness for a particular purpose is limited in duration to the duration of the above warranty. Some states, provinces or jurisdictions do not allow the exclusion or limitation of incidental or consequential damages or limitations on how long an implied warranty lasts, so the above limitations or exclusion may not apply to you. This warranty gives you specific legal rights, and you may also have other rights that vary from state to state or province to province.

**HOW TO OBTAIN WARRANTY SERVICE:** If your CHEFMAN® product should prove to be defective within the warranty period, we will repair it, or if we think necessary, replace it. To obtain warranty service, simply email [customerservice@chefman.com](mailto:customerservice@chefman.com) or call our toll-free number 1-888-315-6553 for additional information from our Customer Service Representatives, or send the defective product to Customer Service at Chefman, 1 Sharp Plaza, Mahwah, NJ 07495.

This warranty is effective for the time periods listed above and subject to the conditions provided for within this policy.

### CALIFORNIA RESIDENTS ONLY:

California law provides that for In-Warranty Service, California residents have the option of returning a nonconforming product (A) to the store where it was purchased or (B) to another retail store which sells CHEFMAN® products of the same type. The retail store shall then, at its discretion, either repair the product, refer the consumer to an independent repair facility, replace the product, or refund the purchase price less the amount directly attributable to the consumer's prior usage of the product. If the above two options do not result in the appropriate relief to the consumer, the consumer may then take the product to an independent repair facility if service or repair can be economically accomplished. CHEFMAN® and not the consumer will be responsible for the reasonable cost of such service, repair, replacement, or refund for nonconforming products under warranty.

CHEFMAN® is a registered trademark of RJ BRANDS, LLC.

# Warranty



## CREPE MAKER



All data fields are required in order for us to process your request:

Model Number: \_\_\_\_\_

Full Name: \_\_\_\_\_

Address: \_\_\_\_\_

\_\_\_\_\_

\_\_\_\_\_

Phone: \_\_\_\_\_ Email: (if applicable) \_\_\_\_\_

Date of Purchase\*: \_\_\_\_\_

\*We recommend you keep the receipt with this warranty card

Retail Store of Purchase: \_\_\_\_\_

### Description of Malfunction:

\_\_\_\_\_

\_\_\_\_\_

\_\_\_\_\_

\_\_\_\_\_

\_\_\_\_\_

Return your completed warranty card to:

**RJ Brands**  
**200 Performance Drive**  
**Suite 207**  
**Mahwah NJ, 07495**

**CREPE MAKER**

**MODEL:**  
**RJ33-C**

**888.315.6553**

**customerservice@chefman.com**

**Phone lines available Monday to Friday, 9am-5pm EST**

**1-YEAR LIMITED WARRANTY**



**To log-in to ClubChefman.com follow the below steps:**

1. Enter [www.clubchefman.com](http://www.clubchefman.com) into your web browser.
2. Click on "Sign Up Now".
3. Fill in the required information as prompted.  
NOTE: "Place of Purchase" refers to the store at which you purchased your product.
4. Sign in using your User Name and Password.

**CLUB CHEFMAN ACCESS CODE:**  
**2131423**

# CHEFMAN®

