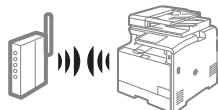


Wireless LAN

Setting Guide



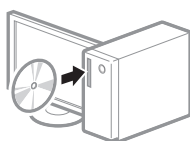
Prepare for Wireless LAN Connection

➞ P.2



Setting the Wireless LAN

➞ P.4



Installing the Software

➞ P.10

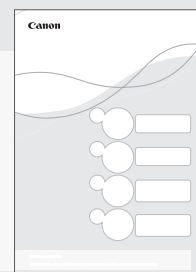


Troubleshooting

➞ P.11

➞ Read this guide before setting up the wireless LAN

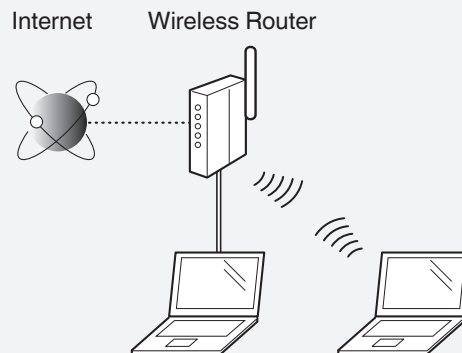
This guide describes the wireless LAN set up procedure, and problems encountered during the configuration. After you finish reading this guide, store it in a safe place for future reference. See the “Getting Started” for machine installation and settings for connection methods other than the wireless LAN.



Prepare for Wireless LAN Connection

Step 1 Check the Following First.

- 1 Is the computer connected to the wireless router properly?
For more information, see the instruction manual for the network device you are using, or contact the networking device manufacturer.
- 2 Have the network settings on the computer been completed?
If the computer is not properly configured, you may not use the wireless LAN connection even after completing the following settings.



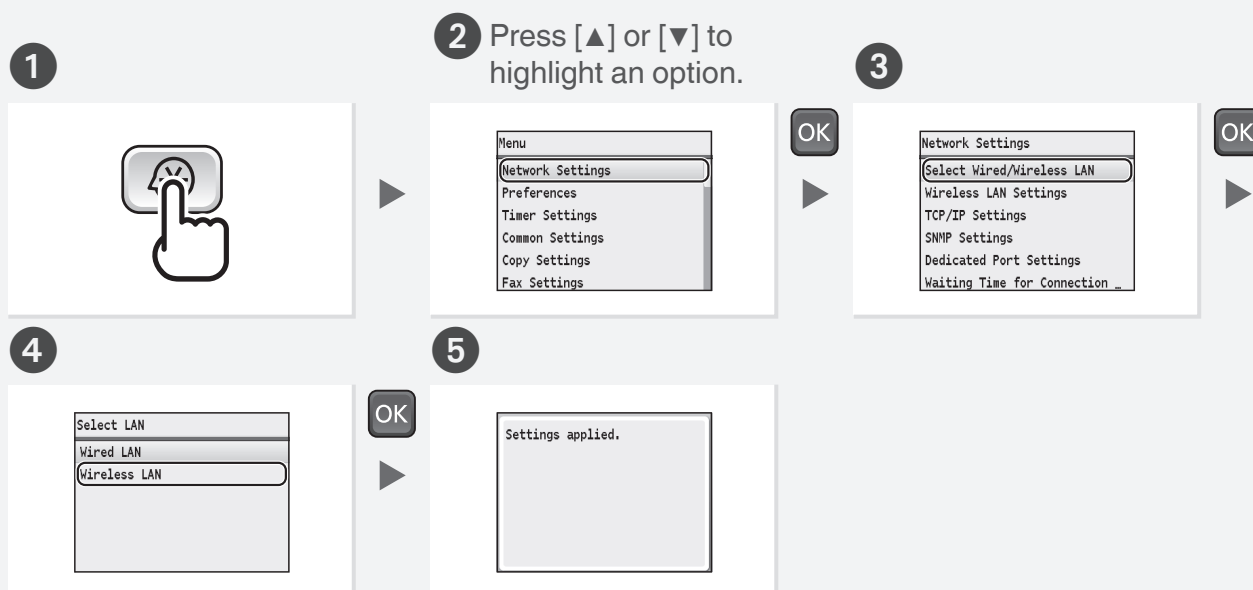
NOTE

- You cannot connect both a wired LAN and wireless LAN at the same time. In addition, the machine is set to the “Wired LAN” by default.
- When you connect to a network environment that is not security protected, your personal information may be disclosed to third parties. Please use caution.
- If you connect through a LAN in the office, contact your network administrator.
- In this manual, a wireless device that is accessed from satellite terminals is generally called as “wireless router.” The term “access point” means a master terminal on a wireless LAN that satellite terminals access to.

When proceeding from “Connecting the Power Cord” in the Getting Started ➡

Proceed to “Check Your Wireless Router.” on P.3.

Step 2 Switch the Connection Method to Wireless LAN.



Step 3 Check Your Wireless Router.

Select the method to set up the wireless LAN from the following two methods, depending on the wireless router that you are using.



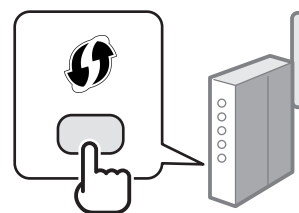
There is a button.

➡ P. 4 (Push Button Mode)

This machine supports WPS (Wi-Fi Protected Setup). You can easily set up if your wireless router has a button, and if the following mark is on the wireless router.



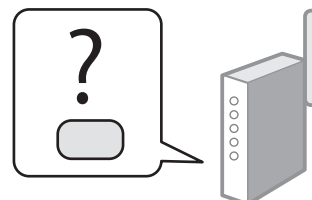
If you are not sure whether your wireless router supports WPS, please see the manual included in the product, or contact the product manufacturer.



There is no button.

➡ P. 6 (Manual Selection)

If there is no button on your wireless router, you may manually select the SSID and complete the settings. In this case, you need to specify the SSID and network key of your wireless router. See “Check the SSID (Network Name/Access Point Name) and Network Key” (P.6) to learn how to find out your SSID and network key.



When proceeding from “Connecting the Power Cord” in the Getting Started ➡

Proceed to step 4 on P.4.

To set up connection by using WPS PIN code mode or manually entering the setup information:

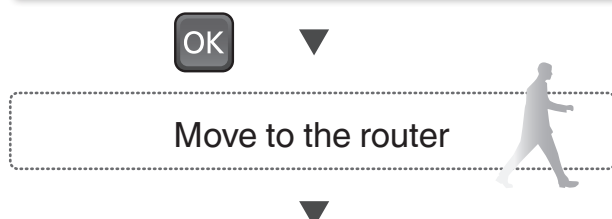
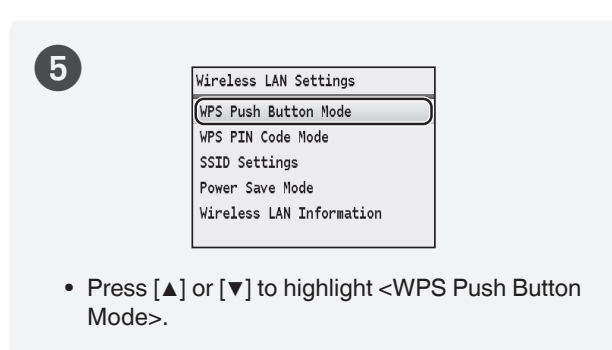
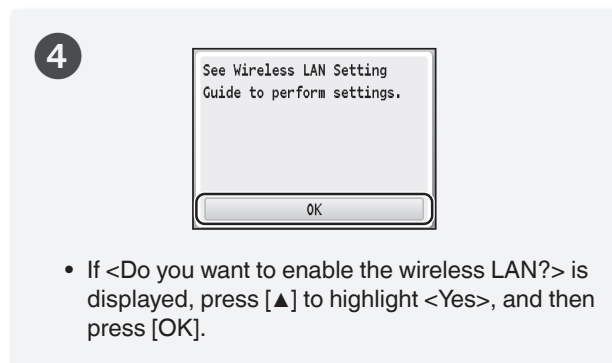
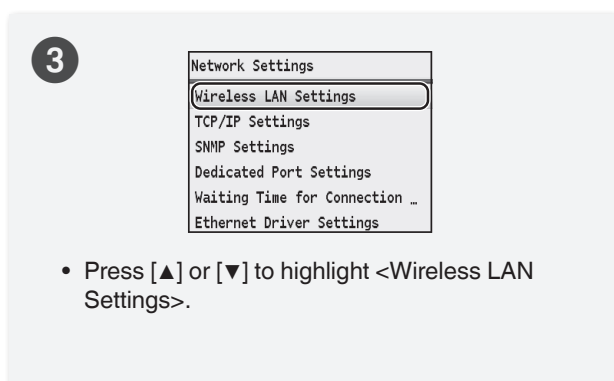
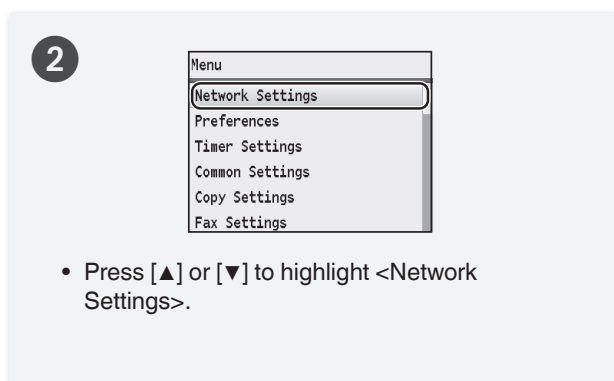
- ➡ “Setting Up Connection Using WPS PIN Code Mode” in the e-Manual.
- ➡ “Setting Up Connection by Specifying Detailed Settings” in the e-Manual.

Setting the Wireless LAN

Push Button Mode

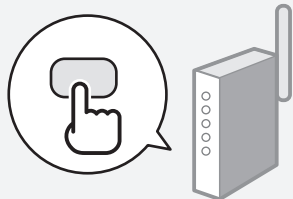
Setting via WPS

Read the instruction manual for your network device first to learn how to configure the settings.





7



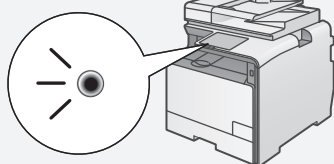
- You should press the WPS button within 2 minutes after you select <Yes> in step 6.
- Press and hold* the button until the WPS lamp lights or blinks.

* The time that you should hold the button may vary depending on the wireless router you are using.

Move to the machine



8



- After the <Connected.> screen is displayed, wait until the Wi-Fi indicator stops blinking and turns on.

Wait approximately 2 minutes after the connection is completed. The IP address is set during this time period.

➡ Proceed to P.9

When an error message appears:

Press [OK] to close the screen, check whether or not the WPS function of the router is correctly set, and then retry the settings.

If the access point cannot be detected even after retrying, see the following.

➡ "When an Error Message Appears" (P.11)

When checking the network connection:

You can check if the machine is properly connected to the network using a computer that connected to the same network.

➡ "Checking that the Wireless LAN Setting is Completed" (P.9)

When setting an IP address manually:

➡ "Setting IP Addresses" in the e-Manual

Setting the Wireless LAN

Manual Selection

Setting by Selecting the SSID (Network or Access Point)

Check the SSID (Network Name/Access Point Name) and Network Key

Fill in the blanks on the right after checking one of the following methods. Check a label attached on the wireless router.



Check using Canon MF/LBP Wireless Setup Assistant*

* Included in User Software CD-ROM, which is supplied with the machine.

➔ "Checking SSID or Network Key for a Wireless Router" (P.17)

• SSID

It is sometimes written as the name of network, or name of access point. If there are multiple SSIDs, please write them all down.

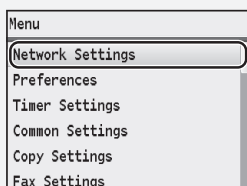
• Network Key

It is sometimes written as PIN, WEP key, WPA/WPA2 passphrase, PSK, or preshared key.

1



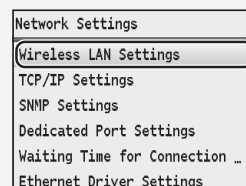
2



- Press [▲] or [▼] to highlight <Network Settings>.

OK

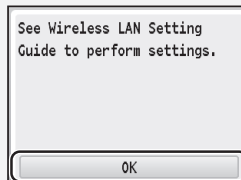
3



- Press [▲] or [▼] to highlight <Wireless LAN Settings>.

OK

4



- If <Do you want to enable the wireless LAN?> is displayed, press [▲] to highlight <Yes>, and then press [OK].

OK



5

Wireless LAN Settings
WPS Push Button Mode
WPS PIN Code Mode
SSID Settings
Power Save Mode
Wireless LAN Information

- Press [▲] or [▼] to highlight <SSID Settings>.

OK



6

SSID Settings
Select Access Point
Enter Manually

- Press [▲] or [▼] to highlight <Select Access Point>.

If <Cannot find access point> is displayed:

- ➔ "When an Error Message Appears" (P.11)

OK



7

Select Access Point
SSID_01
SSID_02
SSID_03
SSID_04
SSID_05
Details

- Press [▲] or [▼] to select the access point you wrote down.
- If multiple matched SSIDs are displayed, select the ID that is listed first (the one with the strongest signal).

If no SSID has been found:

- ➔ "Checking SSID or Network Key for a Wireless Router" (P.17)

OK



8

Proceeding to the screen for entering the access point network key.

OK



9

WEP Key (5-26 Characters)	A
XXXXXXXX	
A/a/12	Apply

PSK (8-64 Characters)	A
XXXXXXXX	
A/a/12	Apply

- Press [✕] to select the entry mode.
- Enter the network key using the numeric keys.

OK



10

Do you want to connect with new settings?

Yes
No

- Press [▲] to select <Yes>.

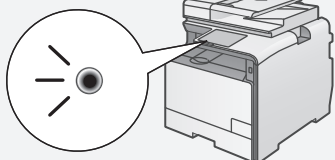
OK



➔ Next Page



11



- After the <Connected.> screen is displayed, wait until the Wi-Fi indicator stops blinking and turns on.

**Wait approximately 2 minutes
after the connection is completed.
The IP address is set during this time period.**

Proceed to P.9

When an error message appears:

Press [OK] to close the screen, check whether the network key is correct or not, and then retry the settings from step ⑤.


If the access point cannot be detected even after retrying, see the following.

➡ “When an Error Message Appears” (P.11)

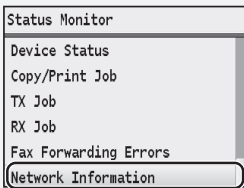
When setting IP address manually:

➡ “Setting IP Addresses” in the e-Manual

Checking that the Wireless LAN Setting is Completed

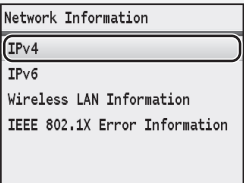
1  (Status Monitor)

▼

2 
 Status Monitor
 Device Status
 Copy/Print Job
 TX Job
 RX Job
 Fax Forwarding Errors
 Network Information

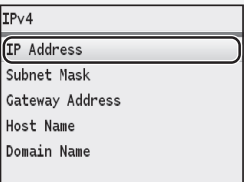
- Press [▲] or [▼] to highlight <Network Information>.

OK ▼

3 
 Network Information
 IPv4
 IPv6
 Wireless LAN Information
 IEEE 802.1X Error Information

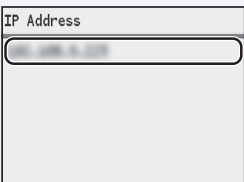
- Press [▲] or [▼] to highlight <IPv4>.

OK ▼

4 
 IPv4
 IP Address
 Subnet Mask
 Gateway Address
 Host Name
 Domain Name


- Press [▲] or [▼] to highlight <IP Address>.

OK ▼

5 
 IP Address

- Take note of the IP address.

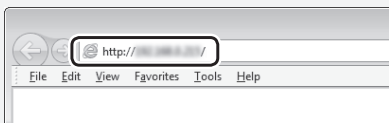
▼

6  (Status Monitor)

▼

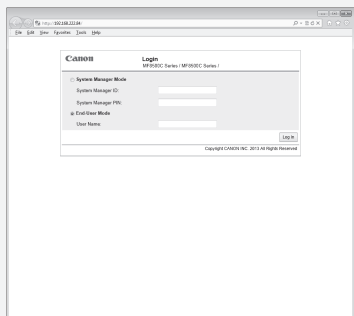
Start a Web browser from the computer

▼

7 
 http://
 File Edit View Favorites Tools Help

- Enter [http://<IP address that you have written down in step 5>/] in the address field, and then press [Enter] on your keyboard.

▼


8 
 Canon
 Login
 Remote UI
 System Manager Mode
 System Manager ID
 System Manager PIN
 End User Mode
 User Name

- Check that the screen of the Remote UI is displayed.


▼

Connection is completed when the screen is displayed.

▼

 **Proceed to P.10**

If the screen is not displayed correctly:

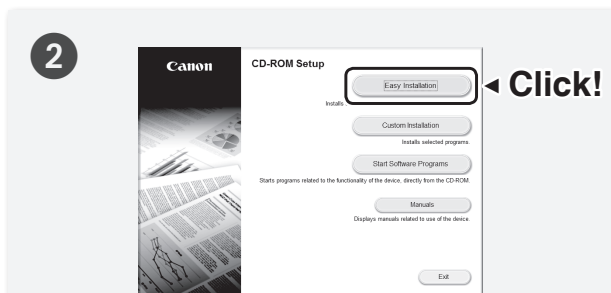
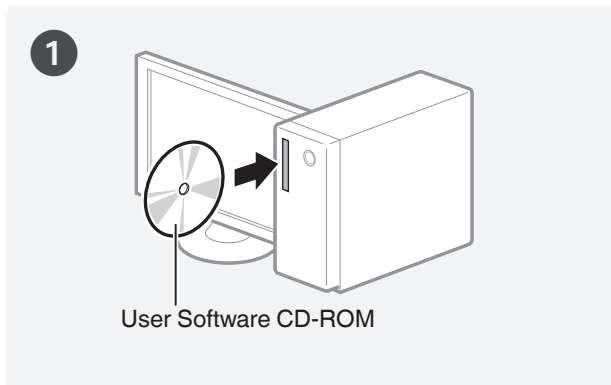
 "The Remote UI is not displayed." (P.14)

Installing the Software

Install the MF Drivers and the MF Toolbox. Make sure that the machine is turned ON, and log on to Windows as a user with administrative privileges. Shut down all applications that are running. See MF Driver Installation Guide for details about installation.

NOTE

- If you are operating in the IPv6 environment, you may not be able to install the software following the procedures below. See "Installing the MF Drivers on the WSD Network" in the MF Driver Installation Guide.
- You cannot use the scan function in the IPv6 environment.

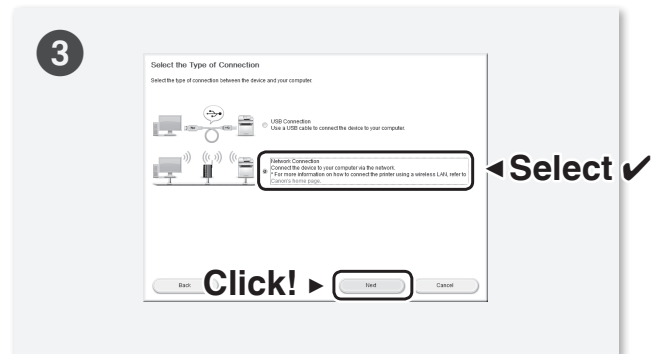


- Printer, fax, scanner drivers, and MF Toolbox will be installed.
- Select [Custom Installation] to install Presto! PageManager and the e-Manual.

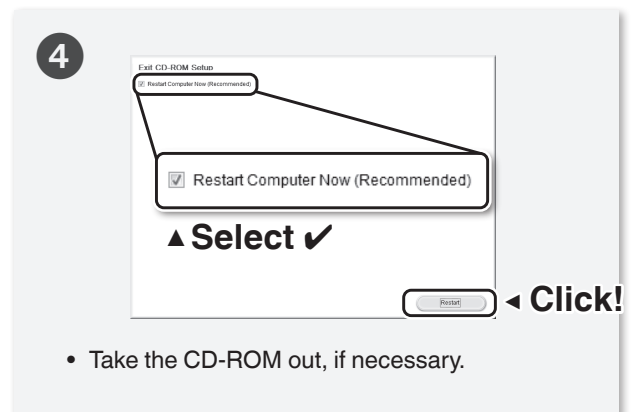
When the screen is not displayed correctly:

- Windows XP/Server 2003
[Start] menu → [Run] → enter [D:\MInst.exe*] → [OK]
- Windows Vista/7/Server 2008
[Start] menu → [Search programs and files] (or [Start Search]) → enter [D:\MInst.exe*] → press the [Enter] key
- Windows 8/Server 2012
Right-click the lower-left corner of the screen → [Run] → enter [D:\MInst.exe*] → [OK]

* The CD-ROM drive name is indicated as "D:" in this manual.



Follow the instructions on the screen to continue.



- Take the CD-ROM out, if necessary.

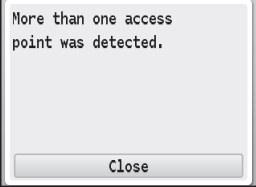
The PC connection via the wireless LAN is now complete.

To uninstall the software:

➔ "Uninstalling the Software" in the MF Driver Installation Guide

Troubleshooting

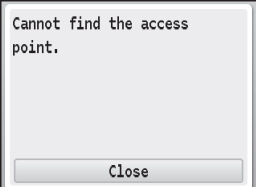
When an Error Message Appears



More than one access point was detected.

Action

- Wait for a while and try again.



Cannot find the access point.

Action 1

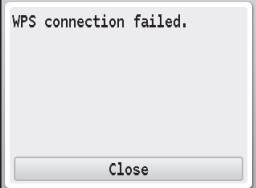
- Wireless router's push button might not be pressed in the time limit. Repeat the setup with the proper procedure.

Action 2

- The correct SSID might not be entered. Confirm the wireless router's SSID and repeat the setup.

If the message still appears:

Check network connection referring to "Cannot Connect to the Network" (P.15). If the access point cannot be determined even after checking the network connection, check the security settings on the wireless router.



WPS connection failed.

Action

- Check that the wireless router that you are using supports WPS function.

If the wireless router is WPS capable:

Check network connection referring to "Cannot Connect to the Network" (P.15).

If the wireless router is not WPS capable:

Manually select a specific wireless router for your network identification. (P.6)



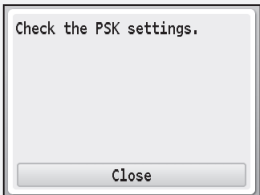
Wireless LAN connection failed.

Action

- Turn OFF the machine and turn it back ON, and then repeat the setup.

If the message still appears:

Check network connection referring to "Cannot Connect to the Network" (P.15). If the access point cannot be determined even after checking the network connection, check the security settings on the wireless router.



Check the PSK settings.

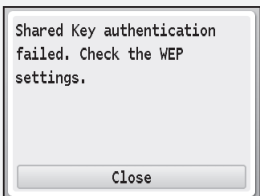
Close

Action

- Enter the correct network key and repeat the setup.

If the message still appears:

Check network connection referring to “Cannot Connect to the Network” (P.15).



Shared Key authentication failed. Check the WEP settings.


Close

Action

- Enter the correct network key and repeat the setup.

If the message still appears:

Check the WEP authentication settings of the wireless router.



Open System authentication failed. Check the WEP settings.

Close

Action

- Change the WEP authentication method on the machine to <Shared Key>. Configure all the settings manually to change the setting to <Shared Key>. (See the e-Manual)

If the message still appears:

When the MAC address filter is set at the wireless router, set the MAC address of the machine to the wireless router. To check the MAC address of the machine, see the e-Manual.

If Problems Occur

The SSID of the wireless router is not displayed in the list of access points.

Cause 1

The SSID of the wireless router that you wrote down on P.6 is incorrect.

Action

- Check the wireless router's SSID.
 - ➡ "Checking SSID or Network Key for a Wireless Router" (P.17)
 - ▼
- Specify the settings again.
 - ➡ "Setting by Selecting the SSID (Network or Access Point)" (P.6)

Cause 2

The SSID is not broadcasted from the wireless router (stealth function).

Action

- Set the wireless router to broadcast the SSID.
 - ➡ See the instruction manual of the wireless router, or contact the manufacturer.
 - ▼
- Specify the settings again.
 - ➡ "Setting by Selecting the SSID (Network or Access Point)" (P.6)

Cause 3

The machine cannot detect the wireless routers because there is a problem with the network connection.

Action

- Check the network connection.
 - ➡ "Cannot Connect to the Network" (P.15)

Cannot detect the SSID or network key of the wireless router.

Action

- ➡ "Checking SSID or Network Key for a Wireless Router" (P.17)

The Remote UI is not displayed.

Cause 1

The machine's IP address is not set correctly.

Action

- Enable the DHCP function for the wireless router, and specify the setting again.
 - ➡ See the instruction manual of the wireless router, or contact the manufacturer.

Cause 2

The wireless router's network key is not correctly specified to the machine.

Action

- Check the network key set to the wireless router, and specify the setting again.
 - ➡ "Checking SSID or Network Key for a Wireless Router" (P.17)
 - ▼
- Specify the settings again.
 - ➡ "Setting by Selecting the SSID (Network or Access Point)" (P.6)

Cause 3

A wrong SSID is selected.

Action

- Check the wireless router's SSID.
 - ➡ "Checking SSID or Network Key for a Wireless Router" (P.17)
 - ▼
- Specify the settings again.
 - ➡ "Setting by Selecting the SSID (Network or Access Point)" (P.6)

Cannot Connect to the Network

Check the following items to make sure that the machine is ready to be connected to a network.

1



Check the status of the computer.

- Have the settings for the computer and the wireless router been completed?
- Are the cables (power cable or network cables) for the wireless router connected properly?
- Is the wireless router turned ON?

If you cannot connect to the network even after checking:

- Turn OFF each device and turn each one back ON.
- Wait a few moments, and reconnect to the network.

2



Check if the machine is turned ON.

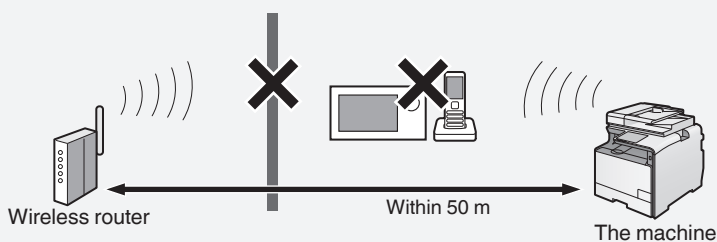
- When the power is already turned ON, turn the power OFF and turn it back ON.

3



Check the installation sites for the machine and the wireless router.

- Is the distance between the machine and the wireless router close enough to communicate?
- Isn't there any obstacle, such as a wall, between the machine and the wireless router?
- Isn't there any electronic device, such as a microwave or a digital cordless phone, that emits electronic wave?



4



Specify the settings again.

- ➡ "Setting via WPS" (P.4)
- ➡ "Setting by Selecting the SSID (Network or Access Point)" (P.6)

➡ Proceed to the next page if you still cannot connect the machine to the network.

Check the settings of the wireless router.

If one of followings is the case:

➡ “Setting Up Connection by Specifying Detailed Settings” in the e-Manual

- Deny ANY*: Enabled
- <Select WEP Key>: A wrong WEP key is selected from <WEP Key 1> to <WEP Key 4>.
- WEP key (hexadecimal): Automatically generated by the wireless router.

* A function that makes the wireless router deny a connection when another device's SSID is set to “Any” or “Empty.”

If one of following is the case, change the settings of the wireless router.

- The MAC address filtering: Enabled
- An encryption method only when communicating using IEEE802.11n: TKIP
- Stealth function*: Enabled

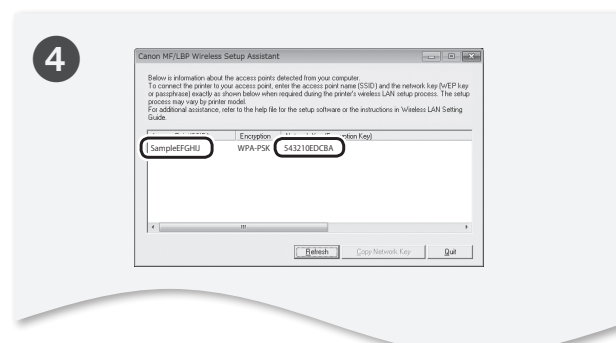
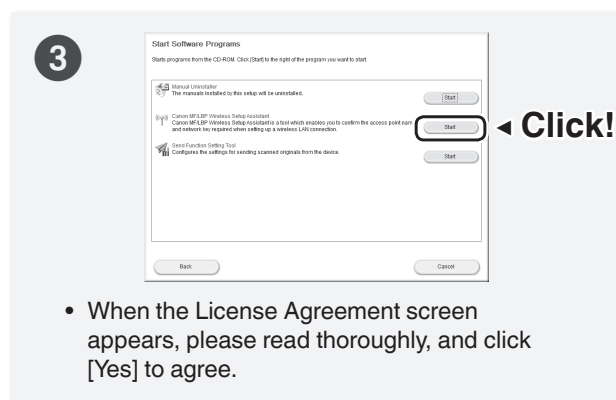
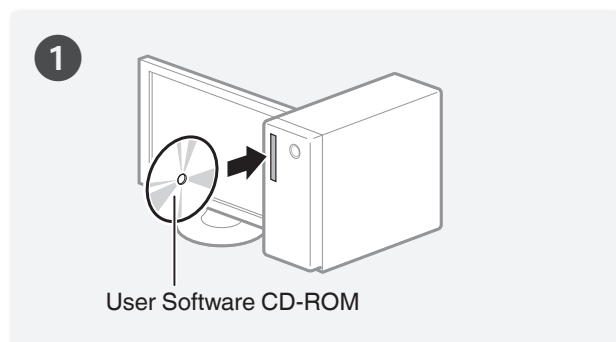
* A function that makes SSIDs of the wireless router invisible on other devices.

For the operation method of the wireless router, see the instruction manual of the wireless router, or contact the manufacturer.

Appendix

Checking SSID or Network Key for a Wireless Router

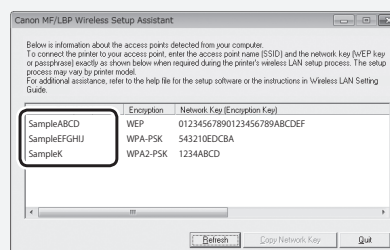
You can check the SSID or the network key using Canon MF/LBP Wireless Setup Assistant, which is included in the User Software CD-ROM.



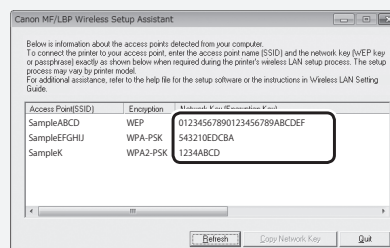
- Write down the name of the access point (SSID) and network key on P.6, and then continue the setup procedure.

If multiple access points are displayed:

- Write down all SSIDs that are displayed.



- Perform the procedure up to step 6 in "Setting by Selecting SSID (Network or Access Point)" (P.6).
- Select the SSID that matches the one you wrote down from the displayed SSID in step 7.
- Write down the network key for the SSID you selected.



If the information for the wireless router is not displayed:

- Click the [Refresh] button.
- If the information is not displayed when you click the [Refresh] button, check the network connection of the computer and the wireless router.

➡ Return to step 7 on P.7



CANON INC.

30-2, Shimomaruko 3-chome, Ohta-ku, Tokyo 146-8501, Japan

CANON MARKETING JAPAN INC.

16-6, Konan 2-chome, Minato-ku, Tokyo 108-8011, Japan

CANON U.S.A., INC.

One Canon Park, Melville, NY 11747, U.S.A.

CANON EUROPE N.V.

Bovenkerkerweg 59, 1185 XB Amstelveen, The Netherlands

CANON CHINA CO. LTD.

15F Jinbao Building No.89, Jinbao Street, Dongcheng District, Beijing 100005, PRC

CANON SINGAPORE PTE LTD

1 HarbourFront Avenue, #04-01 Keppel Bay Tower, Singapore 098632

CANON AUSTRALIA PTY LTD

1 Thomas Holt Drive, North Ryde, Sydney NSW 2113, Australia

CANON GLOBAL WORLDWIDE SITES

<http://www.canon.com/>

