

## Etisalat easynet HSDPA USB Modem

### Quick Guide



ZTE中兴

NO.55, Hi-tech Road South, Shenzhen, P.R.China

Postcode: 518057

Service Hotline: +86-755-26779999

<http://www.zte.com.cn>

E-mail: [mobile@zte.com.cn](mailto:mobile@zte.com.cn)

### Introduction

The etisalat easynet HSDPA USB modem is a multi-mode, 3G USB modem, working in HSDPA/WCDMA/EDGE/GPRS/GSM networks. With USB interface connecting to a laptop or a desktop PC, it integrates the functionality of a modem and a mobile phone (SMS only), and combines mobile communication with Internet perfectly. It supports data and SMS services through the mobile phone network, enabling you to communicate anytime and anywhere.

### Specification

The following table shows the specification of your device.

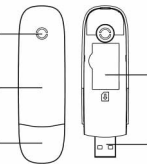
Interface Type	USB 2.0 high speed
Systems supported	Supports most types of laptop and desktop PC.
Operating systems supported	Windows XP, Vista, Windows 7, MAC 10.4, 10.5, 10.6
Functions	SMS service, data service, applications management, etc.
Network Standards.	HSDPA/WCDMA/EDGE/GPRS/GSM
Transmission	HSDPA: 3.6 Mbps DL
	WCDMA: 384 Kbps UL/DL

Temperature	Storage: -40°C ~ +80°C
	Operation: -10°C ~ +60°C
Dimension	76mm x 26mm x 11mm (without cap)
Weight	About 21g
LED	Multi colors indicating the modem working status

### Getting to know your device

The following figure shows the appearance of the etisalat easynet HSDPA modem.

It is only for your reference.



- ① Indicator
- ② Front Cover
- ③ Modem Cap
- ④ SIM/USIM Card Holder
- ⑤ USB Connector

It indicates your modem status.

It protects the front face of the modem.

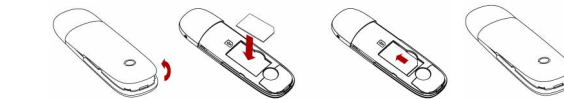
It protects your modem USB port when it is not used.

This is the subscriber identity module/UMTS subscriber identity module (SIM/USIM) card slot.

Connects your modem to the laptop or desktop computer.

### Set up your modem

#### 1) Insert the SIM/USIM card into the USB modem



① Put finger on the bottom finger grip, and then lift the front cover to release and remove.

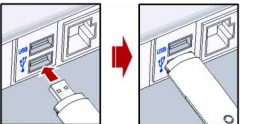
**Note:** Don't open the cover rudely to avoid the damage of the front cover.

② Insert the SIM/USIM card with the metal contact area facing downwards into the slot, and then push SIM/USIM card as far as possible.

③ Put the front cover of the modem flatly upon the body of modem.

## 2) Connect your modem to the laptop or desktop PC

① Plug the USB connector into your computer's USB port and make sure that it is tightly inserted.



② The OS automatically detects and recognizes new hardware and starts the installation wizard.

## Software installation guide

### ● For Windows OS

Your system will start the software setup process automatically when you connect the modem to your computer correctly.

Follow the system prompts to complete the software installation.

**Note:** If the system does not launch installation automatically, you can run the installation program in path of **My Computer**→**etisalat easynet**→**Install.exe**.

### ● For Mac OS







The system will automatically display a **etisalat easynet** CD-ROM icon on the desktop, when you connect the modem to your computer correctly. Double click the installation software package in the **etisalat easynet**, and follow the system prompts to complete the software installation.

## Hardware removal from your system

Close the etisalat easynet management software, and then remove your modem safely.

## How to use your modem

Enable quick operation of the following functions:

	Connection	Click "Connect" button to connect to the Internet.
	SMS	Click "SMS" icon, enter recipient's number and content, and then click "Send" to send new message.
	Phonebook	Click "New" to fill in a new contact person and contact details.
	Settings	Set the configuration for the USB modem.
	My Account	Click "My Account" to check your balance, to recharge and also use other USSD functions.
	Help	Show the help information.

## Safety Warning

### To the owner

- The use of electronic transmitting devices is forbidden in aircraft, at petrol stations and in hospitals. Please observe and obey all warning signs and switch off your modem in these conditions.

- Operating USB modem may interfere with medical devices like hearing aides and pacemakers.
- Be aware of warning signs in places such as oil refineries or chemical factories where there are explosive gases or explosive products being processed.
- Store the USB modem out of reach of children. The USB modem may cause injury if used as a toy or may be damaged by mishandling or moisture.

## Using your USB Modem

- Only use original accessories supplied by the manufacturer. Using unauthorized accessories may void your warranty.
- Avoid using the USB modem near or inside metallic structures or establishments that can emit electromagnetic waves.
- The USB Modem is not waterproof, please keep it dry and store it in a cool place out of direct sunlight.
- Handle the USB modem with care. Don't drop, bend, knock or treat it harshly to avoid damage to the unit.
- There are no user serviceable parts. Dismantling the unit will void the warranty.
- Operating temperature range of -10°C ~ +60°C and humidity 5%~95% are recommended.