

# FSA MULTI-BIT DIGITAL PROCESSORS MODELS FSA 4000/3500

A BREAKTHROUGH IN DIGITAL  
SIGNAL PROCESSING

TSI's Flow and Size Analyzer sets the standard in digital signal processing. Firmware-based, it is the fastest, most accurate signal processor ever offered for PDPA/LDV applications. This compact device is available in two versions, the FSA 4000 and the FSA 3500. Both versions are high-performance digital burst processors offering a host of useful features to optimize data collection.

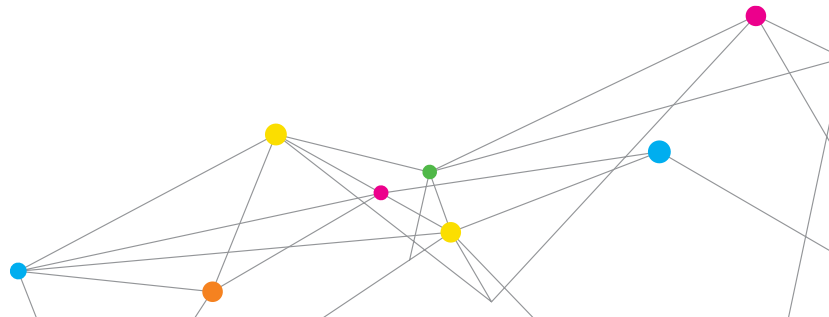


## Features and Benefits

- + High accuracy based on a combination of SNR-based burst detection, dynamic burst sampling rate selection, multi-bit sampling, and other techniques to maximize measurement resolution and accuracy
- + High Doppler frequency - up to 175 MHz - is ideal for measurements in supersonic flows, high-speed pulse sprays, and more
- + Dynamic burst centering, a concept developed by TSI, allows the system to capture samples from the best segment (the middle portion) of each burst
- + Optimized accuracy even from poor quality signals through the use of patented processing techniques
- + Fully controlled by the FlowSizer™ Data Acquisition Analysis and Display Software



UNDERSTANDING, ACCELERATED



# SPECIFICATIONS

## FSA Multi-Bit Digital Processors Models FSA 4000/3500

<b>Maximum Frequency</b>	
FSA 4000	175 MHz
FSA 3500	100 MHz
<b>Minimum Frequency</b>	
300 Hz	
<b>Digitization</b>	
8-bit	
<b>Sampling Rate</b>	
Dynamically optimized for each burst	
<b>Burst Centering</b>	
For velocity and particle size measurements	
<b>Burst detection</b>	
DFT combined with LUT; SNR-based with amplitude threshold	
<b>Frequency Shift</b>	
Built in with +40MHz	
<b>Data Transfer</b>	
FireWire® (IEEE 1394)	
<b>Input Buffer</b>	
For high temporary data arrival rate	
<b>Maximum sampling rate</b>	
FSA 4000	800 MHz
FSA 3500	400 MHz
<b>High-pass filter</b>	
Software-selectable	
<b>Amplitude Sampling</b>	
12-bit A/D (for intensity validation)	
<b>Analog Output</b>	
0 to 10 V for frequency/phase	
<b>Digital Outputs</b>	
Frequency	16-bit
Phase	12-bit
Time stamp	40-bit
Transit time	16-bit
<b>Calibration Diode Parameters</b>	
Software-selectable	
<b>Indicators</b>	
Saturation, calibration diode ON, burst detected, power	
<b>BNC Inputs</b>	
Burst inhibit, time stamp reset	
<b>BNC Outputs</b>	
Detector out, burst gate, signal out, Bragg amplifier driver	



### TO ORDER

Specify either FSA 4000 (175 MHz maximum frequency) or FSA 3500 (100 MHz maximum frequency)

Model	Channels	Measurements
FSA 3500-1	1	Velocity
FSA 3500-2	2	Velocity
FSA 3500-3	3	Velocity
FSA 3500-1P	1	Size and velocity
FSA 3500-2P	2	Size and velocity
FSA 3500-3P	3	Size and velocity
FSA 4000-1	1	Velocity
FSA 4000-2	2	Velocity
FSA 4000-3	3	Velocity
FSA 4000-1P	1	Size and velocity
FSA 4000-2P	2	Size and velocity
FSA 4000-3P	3	Size and velocity

Specifications are subject to change without notice.

FlowSizer is a trademark, and TSI and the TSI logo are trademarks of TSI Incorporated.



UNDERSTANDING, ACCELERATED

**TSI Incorporated** - Visit our website [www.tsi.com](http://www.tsi.com) for more information.

<b>USA</b>	<b>Tel:</b> +1 800 874 2811	<b>India</b>	<b>Tel:</b> +91 80 67877200
<b>UK</b>	<b>Tel:</b> +44 149 4 459200	<b>China</b>	<b>Tel:</b> +86 10 8219 7688
<b>France</b>	<b>Tel:</b> +33 1 41 19 21 99	<b>Singapore</b>	<b>Tel:</b> +65 6595 6388
<b>Germany</b>	<b>Tel:</b> +49 241 523030		