

Specifications

Product CP Series Condensate Pumps

Application Air conditioners and de-humidifiers

Purpose This product is designed to automatically pump condensate produced by air conditioners and de-humidifiers up to 22' vertically once the level of condensate in the tank reaches a specified level.

Advantages DiversiTech CP-22 series pumps beat the industry standard of 20' lift height by 2 feet and come with innovative features such as: vibration dampening feet and motor mounts, metal hang tabs, four inlet holes (and 3 poly covers for the unused), LED indicators, float switch and duckbill-style check valve, plug protector, and detailed installation instructions. Two terminals are provided allowing the installer flexibility to connect air-handler shut-down - an important safety consideration. CP-22 is available with 20' of 3/8" tubing as well.

Utilizing the same great features but in a low-height (4-3/8") design, the CP-22LP is great for tight spaces.

If a smaller job is in order, the CP-16 is an economical alternative that's based off of the proven CP-22 design. More compact than the CP-22, it's designed to lift to a maximum of 16 feet. The CP-16 shares many of the great features of the CP-22, including hang tabs, four inlet holes, float switch, overflow switch, and a check valve.

Maximum Condensate Temperatures

- Continuous duty 140F°
- Maximum inlet temperature 160F°
- Not suitable for contact with steam or gasses that exceed 160F°

Rated Voltage 120 VAC / 230VAC / 60Hz

Rated Current Draw

- 1.9 Amps (120VAC)
- 1.0 Amps (230VAC)

Input Type

- USA 3-prong molded plug (120VAC)
- NEMA 6-15 plug (230VAC)

Maximum Lift Height

- CP-22 series: 22'
- CP-16 series: 16'

(Every Diversitech condensate pump is computer tested to ensure excellent performance at all pumping levels.)

Flow Rate @ Zero Head

- CP-22: 1.6 gallons per minute
- CP-16: 1.2 gallons per minute

Dimensions

- CP-22: 11.8" x 5.9" x 6.7" (4.9"H low profile)
- CP-16: 4.5" x 10.75" x 6.5"
- CP-22: 5 lbs. (4.7 lbs. low profile)
- CP-16: 3.8 lbs.

Inlet Height from Base

- CP-22: 4.4" (1.75" low profile)
- CP-16: 3.5"

Tank Capacity

- CP-22: 1/2 gallon
- CP-22LP: 3/8 gallon
- CP-16: 2/5 gallon

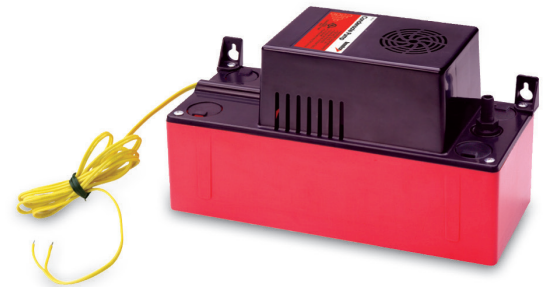
Included Accessories

- Instruction Booklet
- Metal Hang Tabs
- Plug Protector
- 4' Remote Shutoff Leads w/Insulated terminals
- Polyethelene inlet covers (3)

Wiring Color References

- 120V
- Black - Live/Hot
- White - Neutral
- Green - Ground
- (All installations must conform to NEC requirements)

- 230V
- Brown - Live/Hot
- Blue - Live/Hot
- Green/Yellow - Ground
- (All installations must conform to NEC requirements)



Condensate Pumps

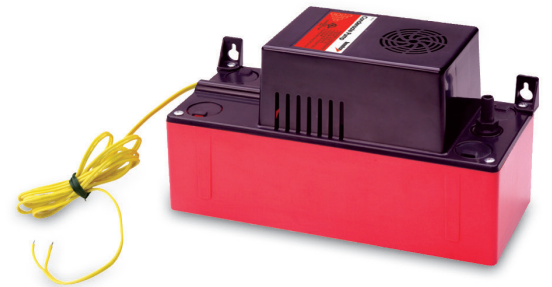
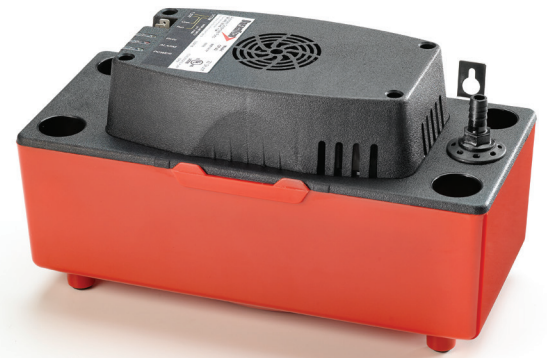
Package Metrics

Producer of Goods DiversiTech

Domestic/Foreign Commodity Foreign

SKU Specific Package Metrics

Catalog No.	Description	Lift	UPC	Order Multiple
CP-22	120V	22'	095247091263	6
CP-22T	120V w/tubing	22'	095247091287	6
CP-22-230	230V	22'	095247092994	6
CP-22-230T	230V w/tubing	22'	095247094578	6
CP-22LP	120V low profile	22'	095247094301	6
CP-22LP-230	230V low profile	22'	0095247131280	6
CP-16	120V	16'	095247123988	6
CP-16-230	230V	16'	095247130207	6



Condensate Pumps