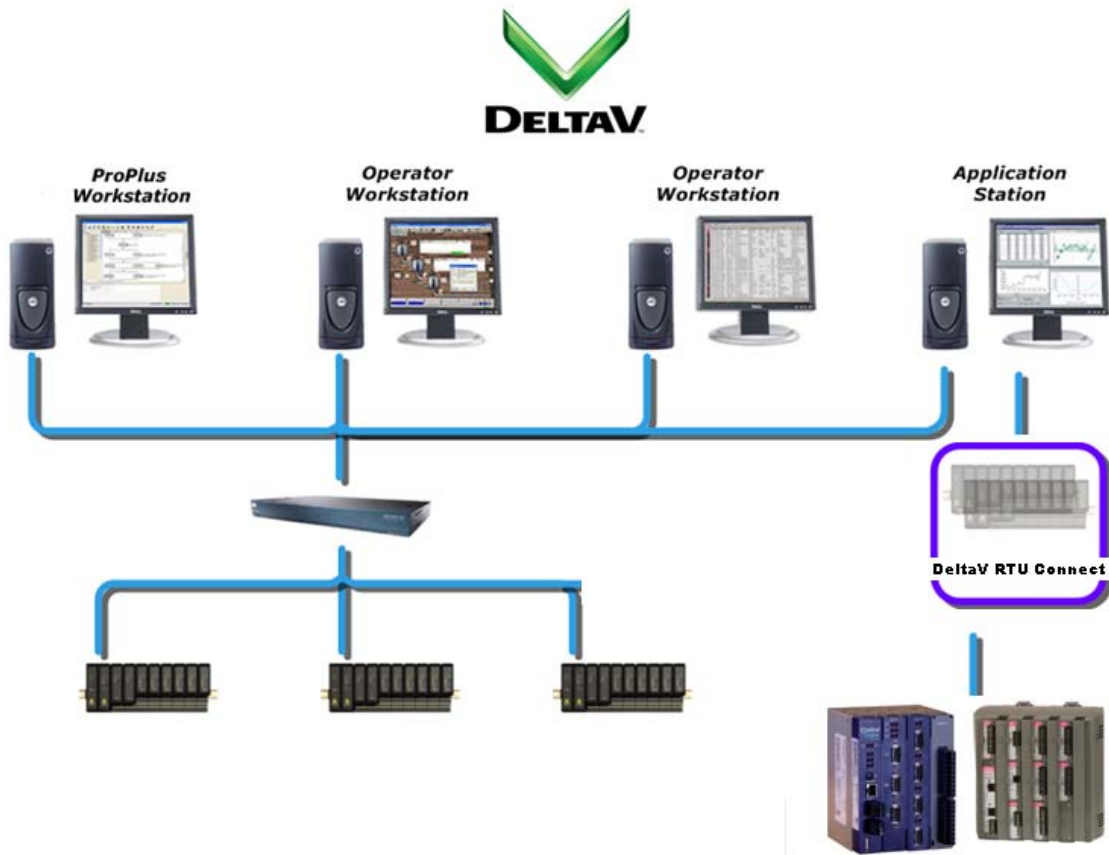


# DeltaV RTU Connect - Getting Started



**Seamless connection -  
from your field assets to your plant automation system**



## Table of Contents

<b>1</b>	<b>DeltaV RTU Connect – Getting Started</b>	<b>1</b>
1.1	Definition of Acronyms	1
1.2	What is the DeltaV RTU Connect?	1
1.3	Setup Options	1
1.3.1	Real Time Integration of Data and Alarms using the Virtual Controller	3
1.3.2	Pass-through Historization from the DeltaV Controller	4
1.3.3	Alarm-Event Historization to the PEH using the OPC Server	6
1.3.4	Pass-through Historization plus PI Historical Backfill	7
1.4	Installation Pre-requisites	8
1.4.1	Hardware	8
1.4.2	Software	8
1.5	Installation Task Flow	9
1.5.1	Install Two DeltaV Application Stations	10
1.5.2	Installing ROCLINK 800 and OpenBSI	11
1.5.3	Configuring the RTU Control Strategy	12
1.5.4	Configuring NetView	13
1.5.5	Configuring Harvester	22
1.5.6	Installing OpenEnterprise Server	23
1.5.7	Building the OpenEnterprise Database	27
1.5.8	Adding a ROC Device	36
1.5.9	Collecting Data from ROC Devices	39
1.5.10	Creating the FHX File	43
1.5.11	Configuring the Plant Event Historian	47
1.6	Licensing Information	50
1.6.1	How do I Register My Software?	50
1.6.2	How to Transfer a License from One PC to another PC	56



# 1 DeltaV RTU Connect – Getting Started

This document introduces you to DeltaV RTU Connect, and describes how to install and configure it. The relevant sections provide details on each process. You also need to consult the user documentation for OpenBSI, ROCLINK 800, ControlWave Designer and OpenEnterprise as you proceed. Firstly, we give a brief description of the DeltaV RTU Connect and outline the main configuration scenarios so that you can decide which of these scenarios best suits your needs.

## 1.1 Definition of Acronyms

**RTU:** Remote Terminal Unit with process control capabilities. In this context it specifically refers to ControlWave and remote operation controllers (ROCs) from Remote Automation Solutions.

**SCADA:** Supervisory Control and Data Acquisition. SCADA systems typically utilize a database and communications software to record, display and write to process control data in remote controllers (RTUs). Network connection can be low bandwidth or even intermittent. In this document, SCADA specifically refers to the OpenEnterprise SCADA system from Remote Automation Solutions.

**OE:** OpenEnterprise.

**DA:** Data Access, the OPC standard for accessing real time data.

**DCS:** Distributed Control System. An integrated process control solution that utilizes distributed hardware and software over an uninterrupted network connection. In this document, DCS refers specifically to DeltaV.

## 1.2 What is the DeltaV RTU Connect?

DeltaV RTU Connect acts as a portal for SCADA monitored process control data through to a DeltaV network.

DeltaV RTU Connect incorporates the OpenEnterprise SCADA communications components together with the industry standard connectivity capability to propagate data through to the DCS and return control commands to the RTU.

## 1.3 Setup Options

The basic method of integrating real time data from RTUs is the same for all installations of the RTU Connect. However, since real time data is constantly changing, you need to historically log (historize) these real time values in order to be able to view the changing data as a trend. The way real time data is historized can differ, depending on system requirements. These historization options affect the components that you need to install, so we outline these options here. You can then decide which option best fits your project.

- 1. Real time integration of Signal and Alarm-Event Data from the Virtual Controller:** This basic RTU Connect functionality passes real-time signal and alarm-event data to DeltaV. It provides a common data structure for all DeltaV RTU Connect installations. See Section 1.3.1 for details.
- 2. Pass-through historization of signal and alarm-event data from the Virtual Controller:** With this option, real time signal data passes directly from the Virtual Controller to the Continuous Historian, and real-time alarm data passes to the Event Chronicle on the Operator Workstation. Alternatively, real time signal data can pass through to a separate PI database. See Section 1.3.2 for details
- 3. Pass-through historization of alarm-event data from the RTU Connect Alarm and Event OPC Server:** This option passes alarm-event data the RTU raises to the Plantwide Event Historian (PEH) via the RTU Connect Alarm and Event OPC Server. The PEH is installed on a separate application station. See Section 1.3.3 for details.

- 4. Historical Backfill from the RTUs to a PI database:** The DeltaV RTU Connect backfill service updates the PI Historian with historical data that is collected directly from the RTUs. This option is recommended where low bandwidth or intermittent communications with the RTUs is likely. It requires that you install and enable the necessary DeltaV RTU Connect Backfill components and install the PI Database onto a DeltaV Application Station. See Section 1.3.4 for details.

### 1.3.1 Real Time Integration of Data and Alarms using the Virtual Controller

This standard default mechanism propagates real time data into the DeltaV system, and it applies to all DeltaV RTU Connect installations.

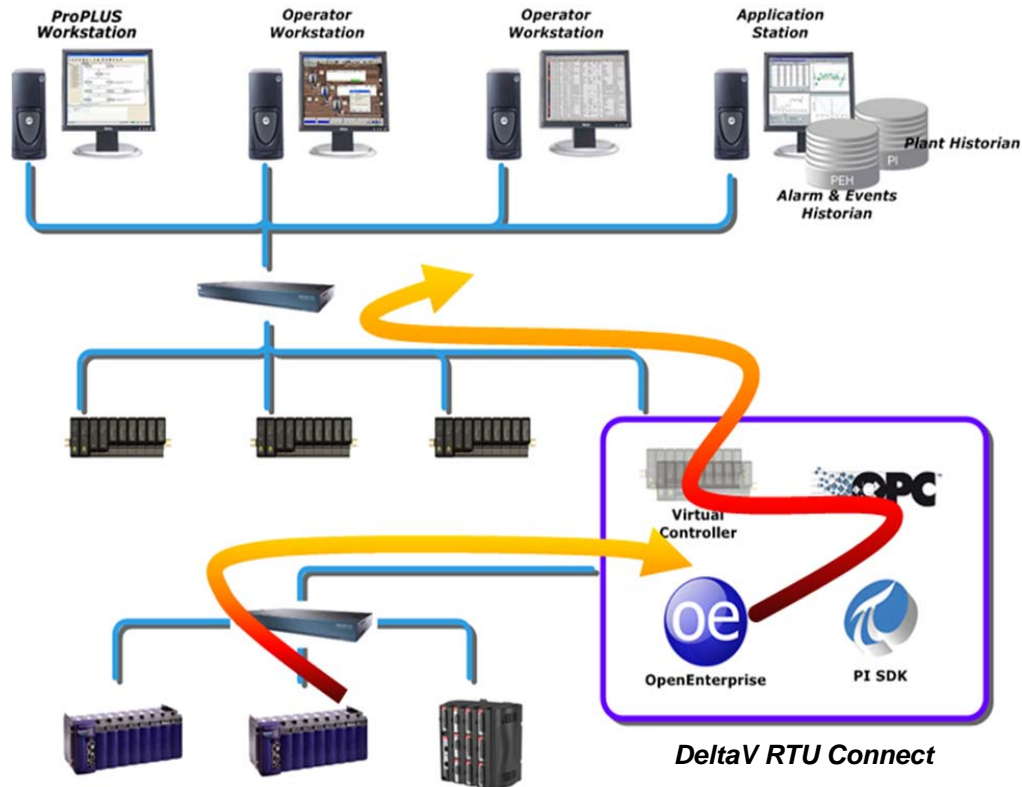


Figure 1 - Real Time Data Collection

Data originating from the RTUs passes to the OpenEnterprise real-time database. Real time signal data is propagated to DeltaV through the DeltaV Virtual Controller. The OpenEnterprise DA OPC server supplies data to the OPC Mirror. The OPC mirror 'pipes' the data through to the DeltaV OPC server. The DeltaV virtual controller then acquires this data and makes it available to the rest of the DeltaV system.

#### DeltaV components and licenses:

- DeltaV Application Station software suite with the DeltaV OPC DA server, sized for the appropriate number of data values from OE
- OPC Mirror, 2 server license (one server for OE, one server for DeltaV)
- Plantwide Event Historian, 2 server license (one for the alarm & event backfill capability from OE and one for real-time alarms and events from DeltaV)

#### RAS components and licenses:

- OpenEnterprise software
- DeltaV RTU Connect (the DeltaV FHX and OPC Mirror pipe configuration builder software)
- OpenBSI license (Bristol RTU communications middleware)
- ControlWave designer license (Bristol RTU IEC 6-1131 programming tool)
- ROCLINK 800 license (ROC Configuration software)
- ROC DS800 license (ROC IEC 6-1131 Configuration tool)

### 1.3.2 Pass-through Historization from the DeltaV Controller

Historical signal and alarm-event data is automatically made available to the DeltaV system from the real time data that is sent from the DeltaV Virtual Controller on the RTU Connect Application Station. Pass through historization can be implemented using the DeltaV Continuous Historian that is installed on DeltaV Operator Workstations or using a PI Historian that is installed on a separate Application Station.

#### 1.3.2.1 Pass-through Historization to the Continuous Historian and Event Chronicle

Real time signal data can be passed-through from the DeltaV Virtual Controller to the native DeltaV historian (the “Continuous Historian”) which is based on the Emerson owned “Objectivity” database. This database resides on each Operator Workstation as a separate historical instance and services the historical data required for trending. This can be thought of as the default method of storing historical data for the RTU Connect.

Alarm and Event data can also be passed through from the DeltaV Virtual Controller via simulated Alarm Limit function blocks. Alarms are raised from these function blocks and are collected by the Event Chronicle which again resides on the DeltaV Operator Workstation.

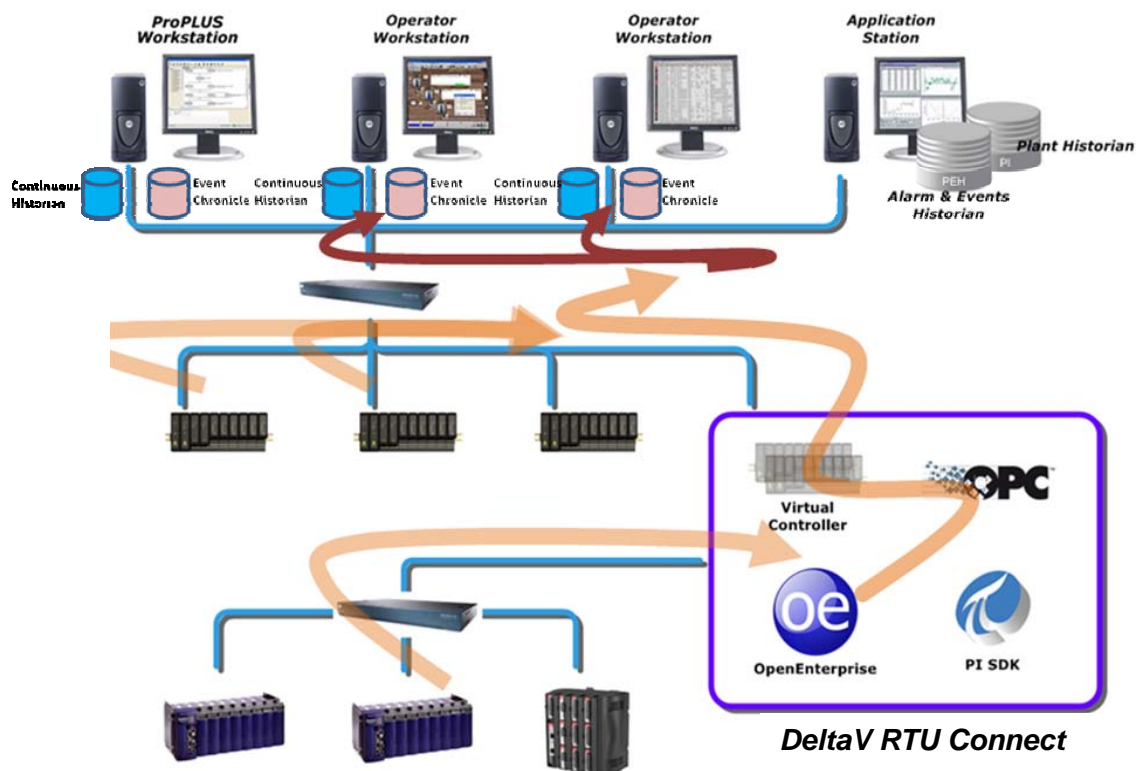


Figure 2 – Pass through Historization using the Continuous Historian

#### Continuous Historian installation pre-requisites

The DeltaV Continuous Historian is part of the DeltaV installation and requires no further installation or licensing. It is recommended only for systems which have a continuous, robust connection to the RTUs. It does not allow for historical data to be backfilled from the RTUs following connection downtime.



### 1.3.2.2 Pass-through Data Historization to a PI Historian

Alternatively, the real time signal data can be passed-through to a PI database. This would be installed on a separate Application Station.

Real time signal data within the Virtual controller can be historized using the standard DeltaV system historical streaming into PI from sampled real time data, via the Smart controller function. This scenario is shown in Figure 3.

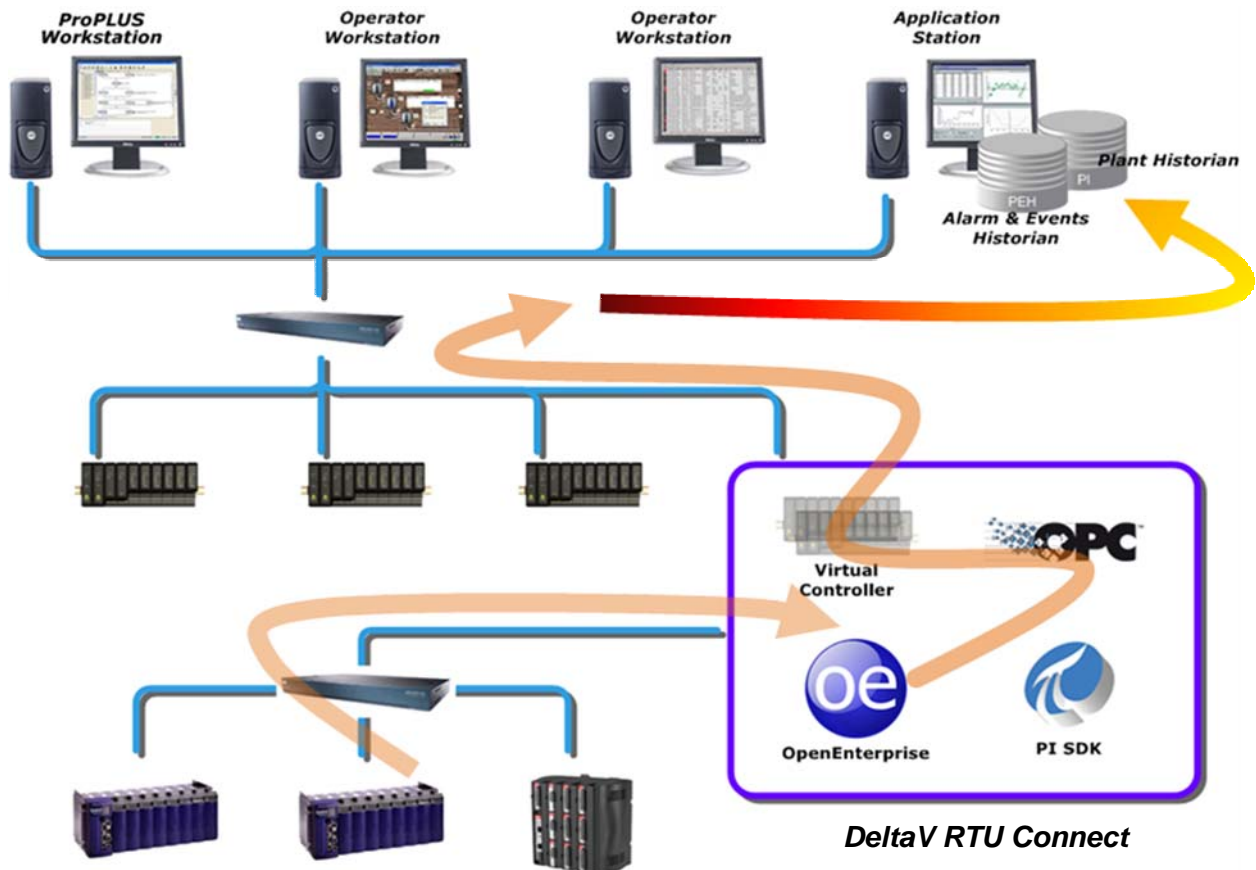


Figure 3 - PI Data Pass-Through

Real time data is stored with the time stamp assigned by the virtual controller at the time of processing. Again, this method of historization does not allow for the backfilling of historical data from RTUs after downtime.

The PI OPC interface is a component of the DeltaV Smart controller that facilitates data propagation to the PI database when a signal is configured with DeltaV to be a historically logged point. An XML file called the En-Hist config file is generated by DeltaV for tags that have been selected for historical logging. The Ent-Hist file specifies scan rates etc and is used by PI to define the historical collection. These functions are inherent in DeltaV/PI components and are not part of DeltaV RTU Connect functionality.

### PI Historian Installation pre-requisites

#### OSIsoft component and licenses:

- Enterprise PI server

### 1.3.3 Alarm-Event Historization to the PEH using the OPC Server

An alternative way of historizing alarm-event data is to pass the alarm-event data from the RTU Connect Alarm and Event OPC Server to the PEH, which is installed on a separate Application Station.

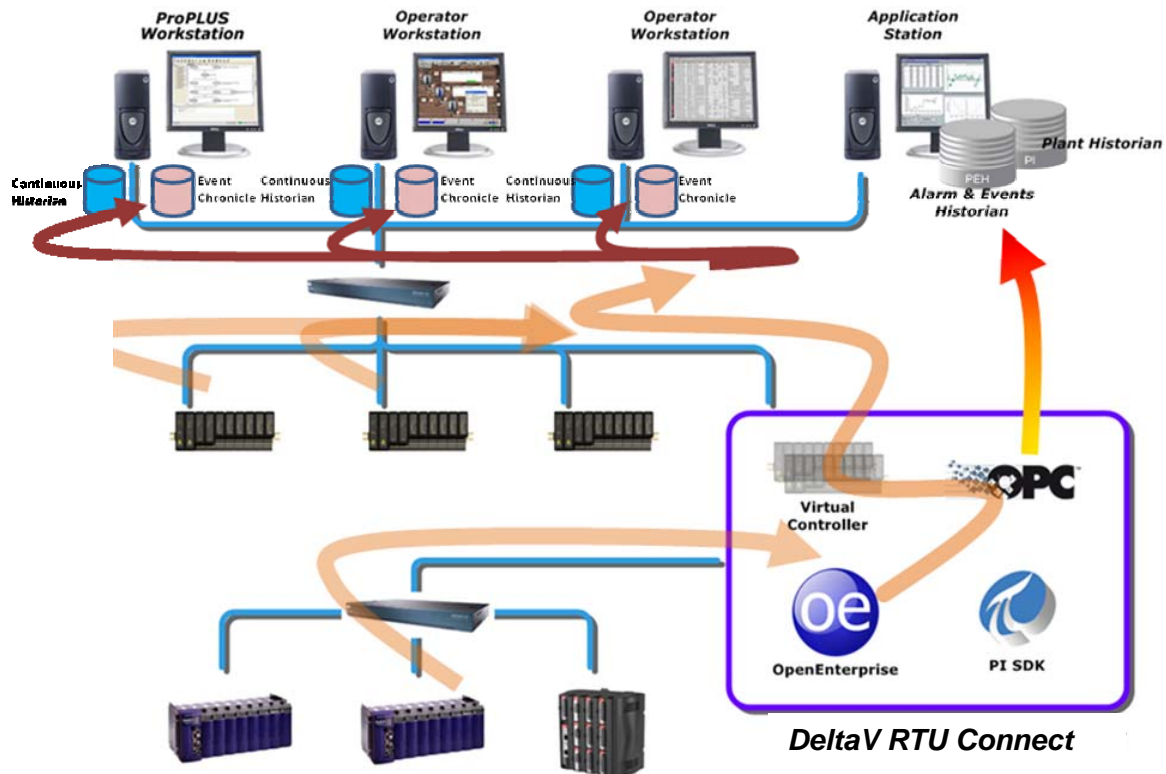


Figure 4: Alarm-Event Historization to PEH

#### Is Pass-through Historization Enough?

Historization using the Continuous Historian or a PI historian alone is only recommended where there are permanently connected RTUs with robust communications. However, for typical SCADA applications, the telemetry can be intermittent and subject to outages. The pass-through historization approach alone would not be recommended in this case, as there is no mechanism to handle downtime at the device. For example, if a ROC device was configured to store historical data within its archive and attached to the system described above, and there was a communication outage, data could be lost. This is because the pass-through Historization process cannot access and back-fill the stored archive data in the ROC RTU captured during the period of downtime.

### 1.3.4 Pass-through Historization plus PI Historical Backfill

The pass-through Historization method defined in section 1.3.2.2 historizes the Virtual controller data but does not propagate the RTU time stamp or support the RTU back-fill function. The solution to this problem is to use the RTU Connect PI Historical Backfill Service. One version of this is shown in Figure 5. In this scenario, during normal operation real time data passes from the RTU Connect Virtual Controller directly into the PI Historian. If there is a disconnection with the RTUs, any missed data passes via the RTU backfill service into PI once communications are resumed.

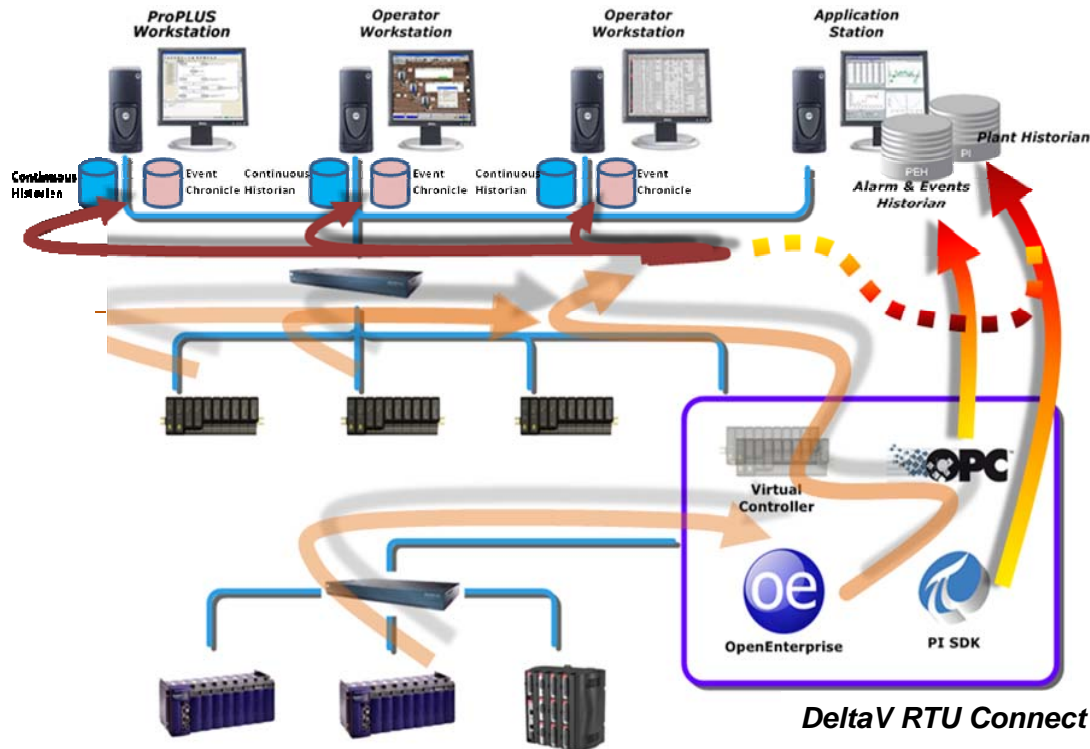


Figure 5 – Pass-through Historization plus PI Historical Backfill Service

#### 1.3.4.1 PI Historical Backfill Explained

If an RTU is disconnected from the system, any subsequent updates will be stored in its historical archive. At some time later when the device is reconnected, the data stored in its historical archive will automatically be sent through to DeltaV RTU Connect. The RTU Connect Backfill service then propagates this data to PI, inserting new records and replacing or ignoring duplicates, depending on how you configure it. DeltaV can then access this historical data in PI using its suite of analysis tools (trending, etc.).

#### PI Historical Backfill Installation pre-requisites

This is the same as for the Real Time scenario, plus the following components and licenses:-

##### OSIsoft components and licenses:

- Enterprise PI server, sized for the appropriate number of historical points/tags which will be backfilled by DeltaV RTU Connect
- PI SDK

##### RAS components and licenses:

- OpenBSI Harvester license (Bristol RTU history upload software)

## 1.4 Installation Pre-requisites

### 1.4.1 Hardware

Devices which may be connected to the DeltaV RTU Connect Application Station:

- ControlWave Micro
- ROC800

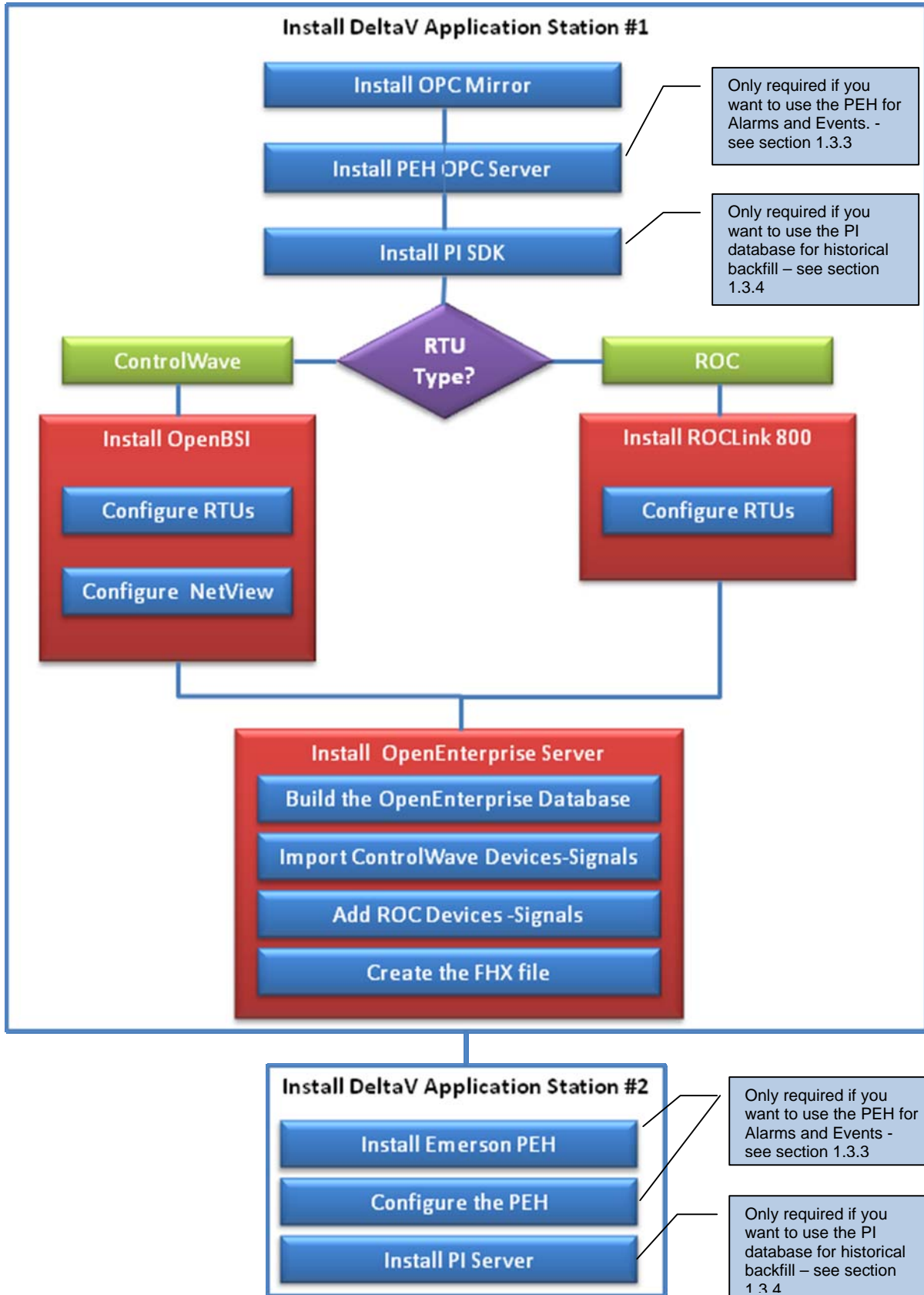
Recommended Operating systems

- Windows 7 (for the DeltaV RTU Connect Application Station)
- Windows Server 2003 (for the Application Station with PEH and PI server)

### 1.4.2 Software

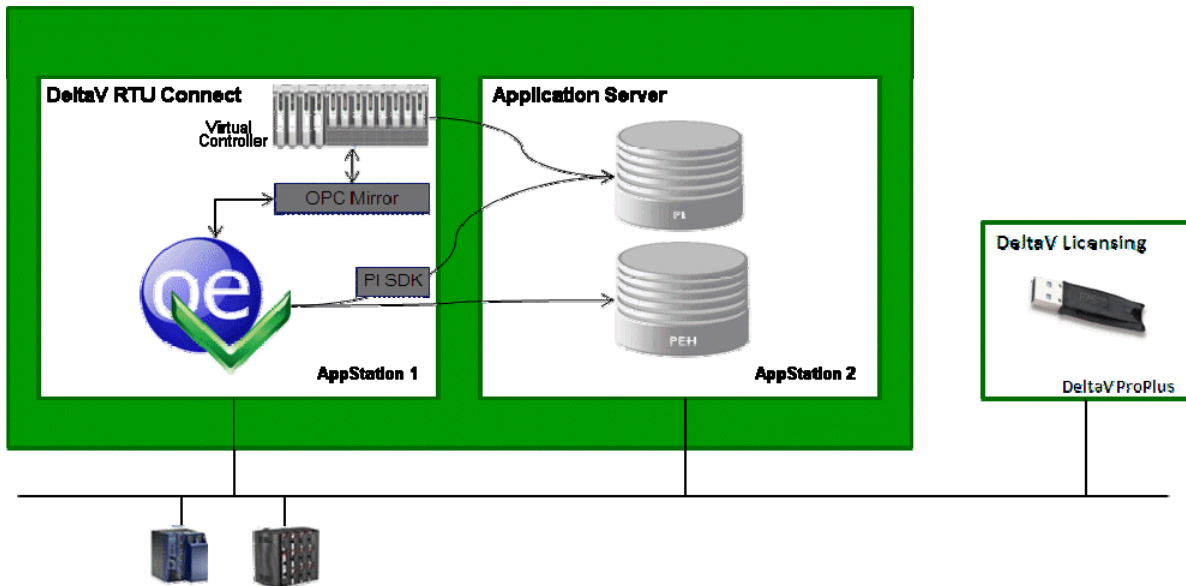
- OpenEnterprise Server (2.83 onwards) (on DeltaV RTU Connect installation disk)
- OPC Mirror (on DeltaV installation disk)
- ROCLink (on ROCLink installation disk)
- PEH OPC Server (on PEH installation disk)
- OpenBSI (on OpenBSI installation disk)
- PI SDK – Version 1.3 (on installation disk available from OsiSoft)
- PI Server – Version 3.3.1.3 (on installation disk available from OsiSoft)
- Emerson PEH – 3.1 (on PEH installation disk)

### 1.5 Installation Task Flow



## 1.5.1 Install Two DeltaV Application Stations

The diagram below provides an overview of DeltaV RTU Connect integration.



Create two DeltaV Application Stations. One hosts the RTU Connect software and the other runs the Plant Wide Event and PI Historians.

### Appstation1 (DeltaV RTU Connect)

Install the following components in the following order:

- **DeltaV Appstation** - Consult the DeltaV documentation for help.
- **OPC Mirror** – See the DeltaV documentation for help.
- **OpenBSI v5.8** (required when using ControlWave RTUs).
- **ROCLINK 800** (required when using ROC RTUs).
- **OpenEnterprise Server**
- **PEH OPC Server** – Consult the DeltaV documentation for help.
- **PI SDK** (used for historical streaming) – Version 1.3 (Not supporting 1.2 or less) – Consult the OsiSoft documentation for help.

### Appstation2– (Plant Wide Event Historian & PI historian)

Install the following components in the following order:

- **DeltaV Appstation** - Consult the DeltaV documentation for help.
- **Emerson PEH** - Consult the DeltaV documentation for help.
- **PI Server** Consult the OsiSoft documentation for help.

## 1.5.2 Installing ROCLINK 800 and OpenBSI

Before you can begin installing OpenEnterprise Server on your DeltaV RTU Connect Application Station, you need to install and configure the control strategy software. The process data is then available to OpenEnterprise.

### 1.5.2.1 Installing ROCLINK 800

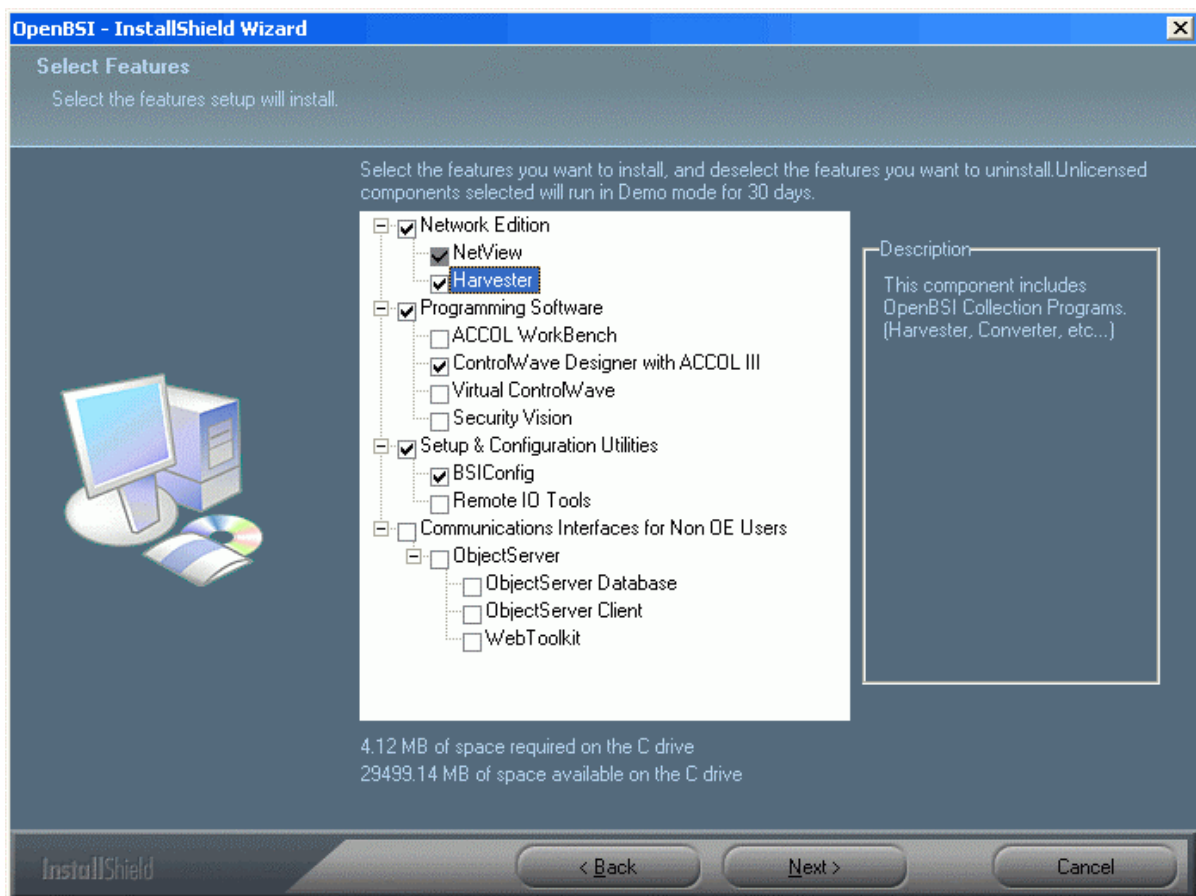
For information on installing and configuring ROC RTUs, refer to the *ROCLINK™ 800 Configuration Software User Manual (for ROC800-Series)* form number A6218, part number D301159X012. This manual is available from the Emerson documentation web site ([http://www.documentation.emersonprocess.com/groups/public/documents/instruction\\_manualse/](http://www.documentation.emersonprocess.com/groups/public/documents/instruction_manualse/))

### 1.5.2.2 Installing OpenBSI

When installing OpenBSI, select the following options:

- NetView (Network Edition)
- Harvester
- ControlWaveDesigner with ACCOL III
- BSISConfig

You specify these components on the “Select Features” page of the OpenBSI installation wizard.



### 1.5.3 Configuring the RTU Control Strategy

Configuring the RTU Control Strategy is beyond the scope of this guide, but you can get help on this subject from the documents listed below. Note that you must have done the following before you can continue configuring DeltaV RTU Connect:-

- **ControlWave RTUs:** Your Control Strategy files must have been coded and saved using ControlWave Designer. Ensure you have saved to both MWT and ZWT format.
- **ROC RTUs:** Your ROC RTUs must be configured using ROCLink™ 800.

#### 1.5.3.1 Configuring ControlWave RTUs

For information on how to configure ControlWave RTUs using ControlWave Designer, refer to the following documents:

- *Getting Started with ControlWave Designer*, (document number D5085, part number D301416x012)
- *ControlWave Designer Programmer's Handbook* (document number D5125, part number D301426x012)

#### 1.5.3.2 Configuring ROC RTUs

For information on installing and configuring ROC RTUs refer to the following document:

- ROCLINK™ 800 Configuration Software User Manual (for ROC800-Series) form number A6217, part number D301249X012 from the Emerson documentation web site

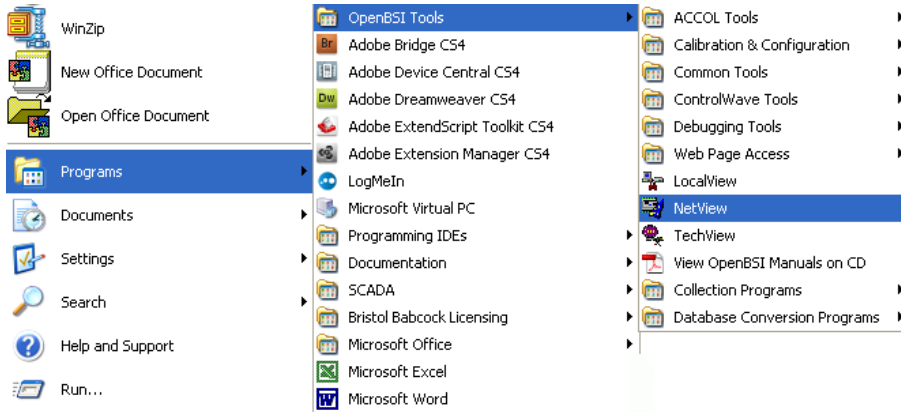


## 1.5.4 Configuring NetView

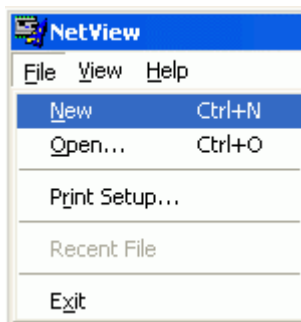
This section provides the most basic instructions for configuring NetView within OpenBSI. For more information on every aspect of configuration, consult the OpenBSI Utilities Manual, (document number D5081, part number D301414x012), available from the Emerson documentation web site.

To open NetView:

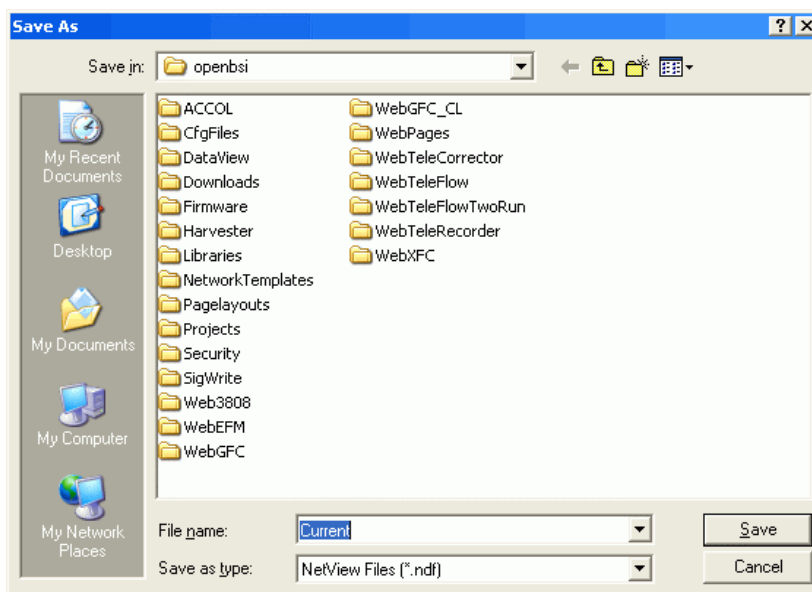
### 1. Select **Start > Programs > OpenBSI Tools > NetView**



### 2. Select **File > New**.



### 3. Save As Current.NDF



### 4. Page 1 of the System wizard opens. will see the following three wizard pages.

## a) Page 1

Accept the default settings on this page.

Click **Next** .

## b) Page 2

Accept the default settings on this page also.

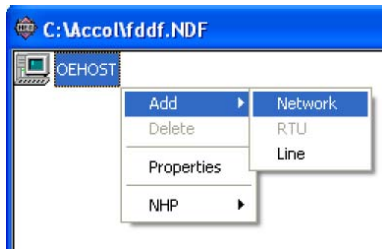
Click **Next** to display page 3 of the System wizard.

## c) Page 3

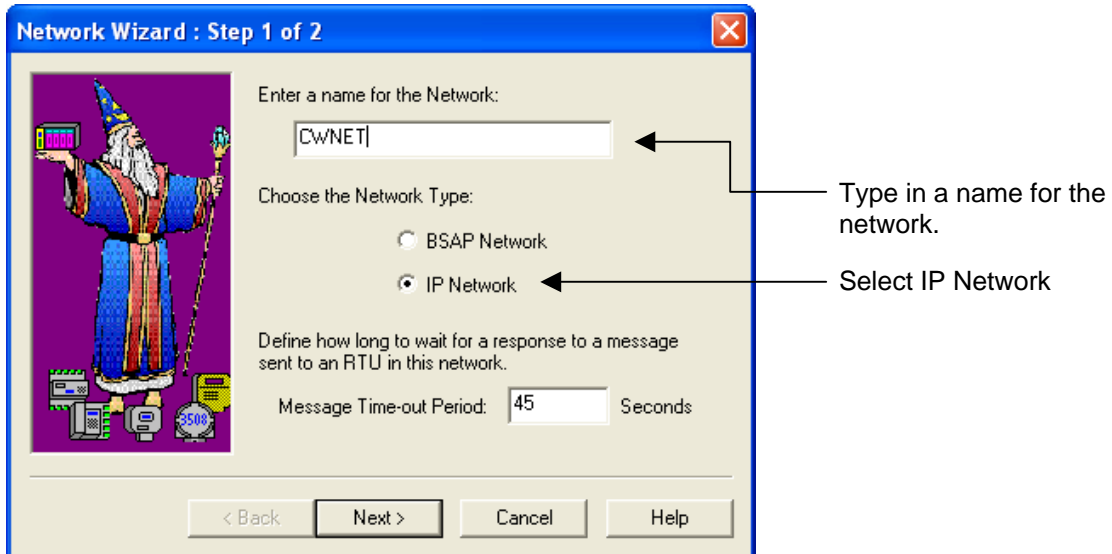
On this page you need to type the name of your Host PC (the NHP) and its primary IP address in the appropriate fields.

Click **Finish**.

- To add a network node, right-click the top node and select **Add > Network**.



The first page of the Network Wizard opens:-



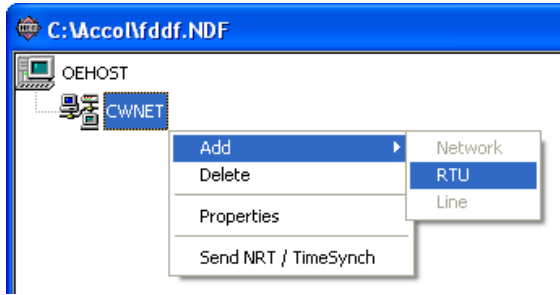
Click **Next**.

On page 2 of the Network Wizard, the Destination IP address for Alarm and RBE reports will be entered automatically.

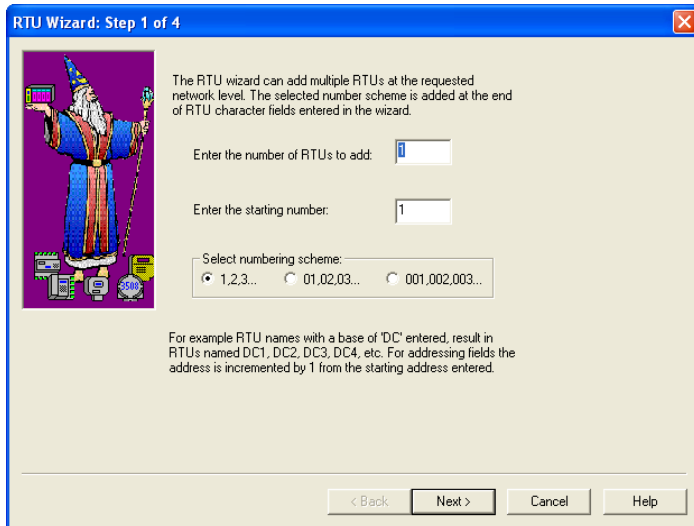


Click **Finish**.

- Now you can add an RTU. In the main NetView window, right click on the new network node and select **Add > RTU**.

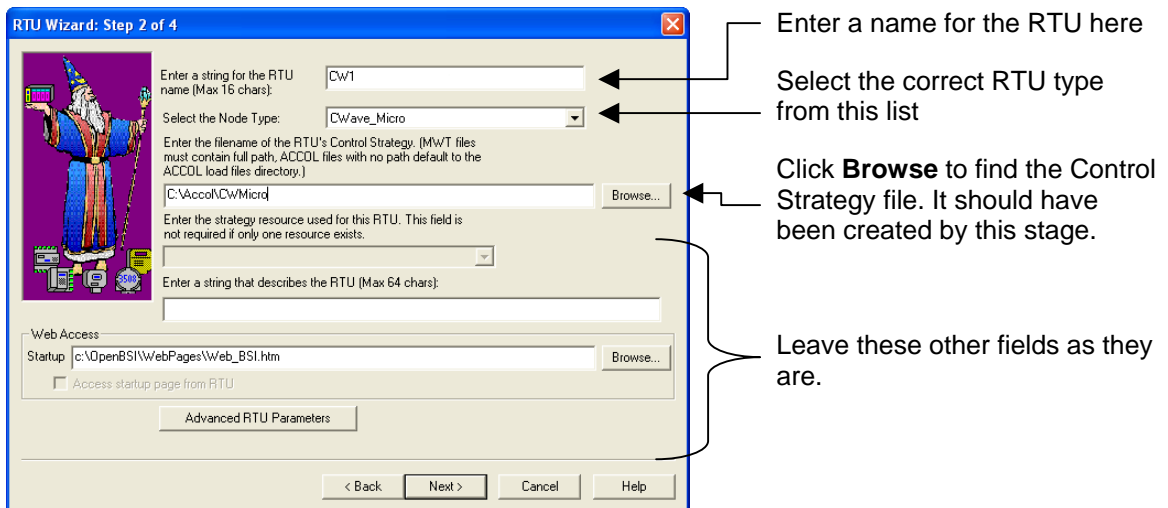


7. Accept the defaults on page 1 of the RTU Wizard.



Click **Next**.

8. Configure the RTU Name, RTU type and name of the Control Strategy file on page 2 of the wizard.



Click **Next**.

9. Enter the RTU's Primary IP address on page 3.

RTU Wizard: Step 3 of 4

IP RTU

What is the Primary IP Address:

xxx . xxx . xxx . xxx

What is the Secondary IP Address:

0 . 0 . 0 . 0

What is the Local Address: 1

This is the maximum local address in case a BSAP network will be defined under this IP node.

< Back Next > Cancel Help

10. Accept the defaults on page 4 and click **Finish**.

RTU Wizard: Step 4 of 4

Select the Communication Fail-Over Method.

Always try to establish Primary link.

Stay with link that is working. (Symmetric)

Do you want this RTU to be accessed directly from Remote PCs ?

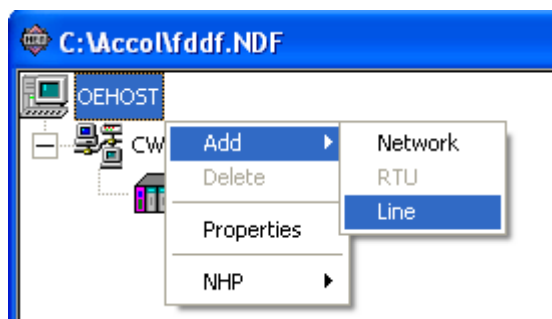
Yes  No

Do you want to disable the sending of the time synchron. message to this RTU ?

Yes  No

< Back Finish Cancel Help

11. Now you need to add a line. Right-click on the top node and select **Add > Line**.



12. Enter a name for the line on page 1 of the Comm Line wizard.



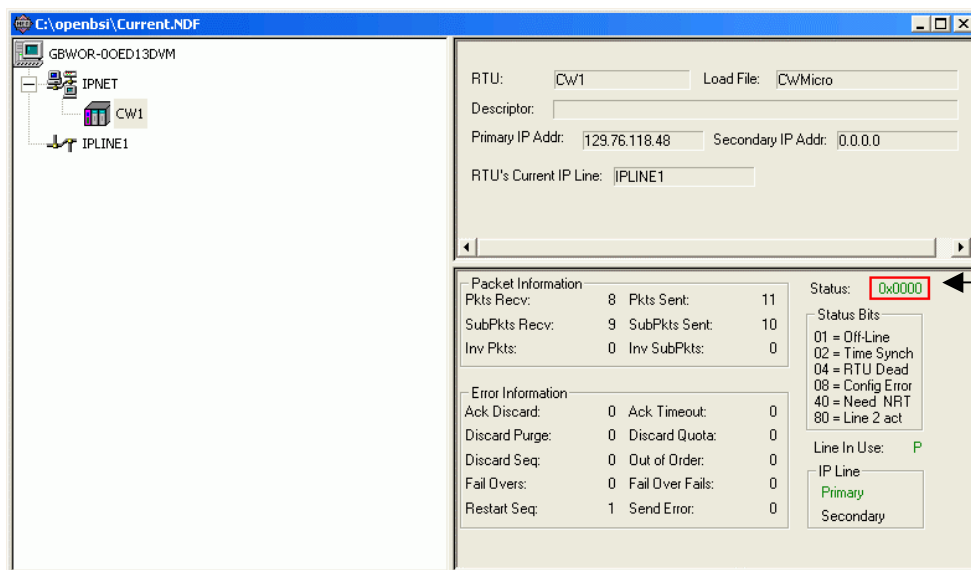
13. Enter the first three mask values for the IP Line and click **Finish**.



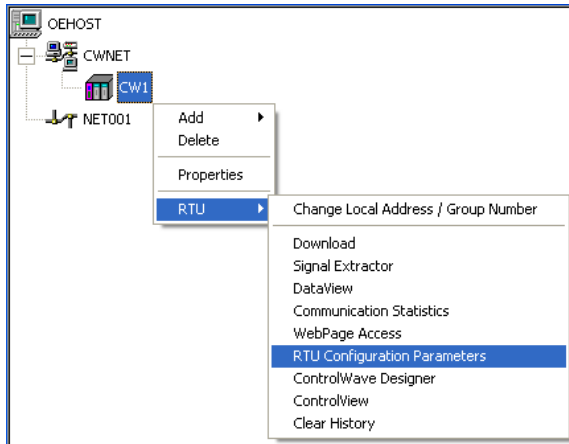
Type a subnet mask here of **255.255.255.0**. The 255 mask numbers force the line to connect to the 192.168.1 subnet IP address in the example here.

The 0 (zero) value at the end of the mask forces the line to be open to all RTUs having IP addresses that occur within the specified subnet.

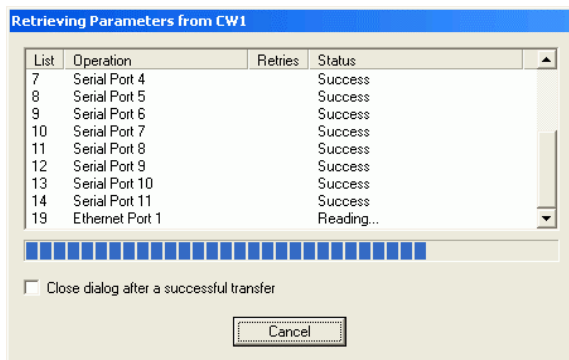
14. When you have finished, the RTU should show a status of 0x0000, which means it is connected.



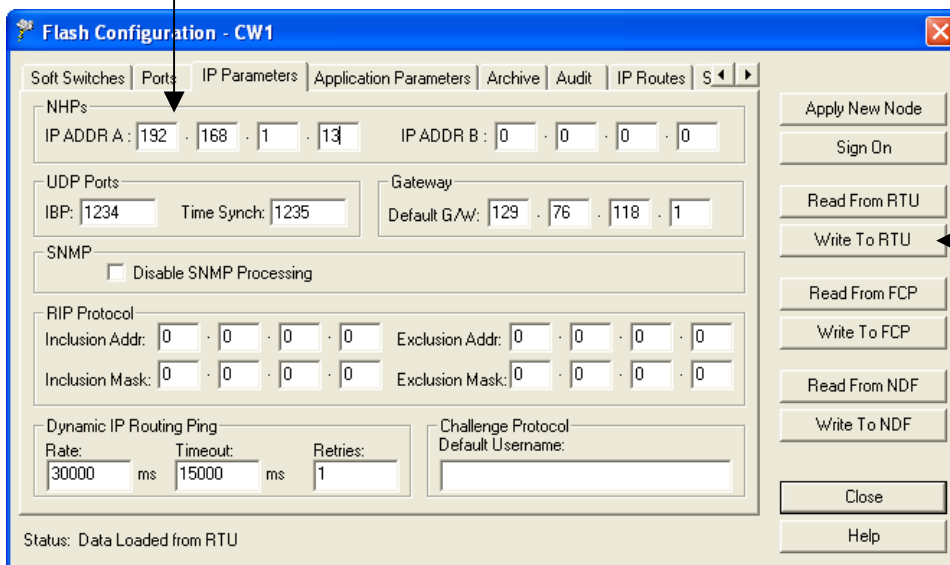
- To ensure that the RTU can send Alarm and RBE to your DeltaV RTU Connect server, you may need to write the server's address to the RTU's configuration parameters. Right click on the CW1 device and select **RTU > RTU Configuration Parameters**.



The system retrieves the RTU configuration parameters...



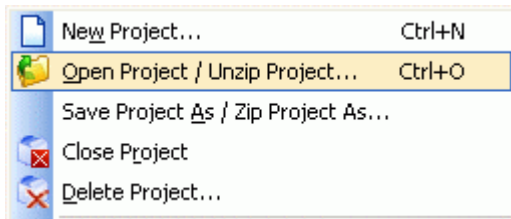
- Modify the NHP IP ADDR A to be the IP address for your DeltaV RTU Connect server,



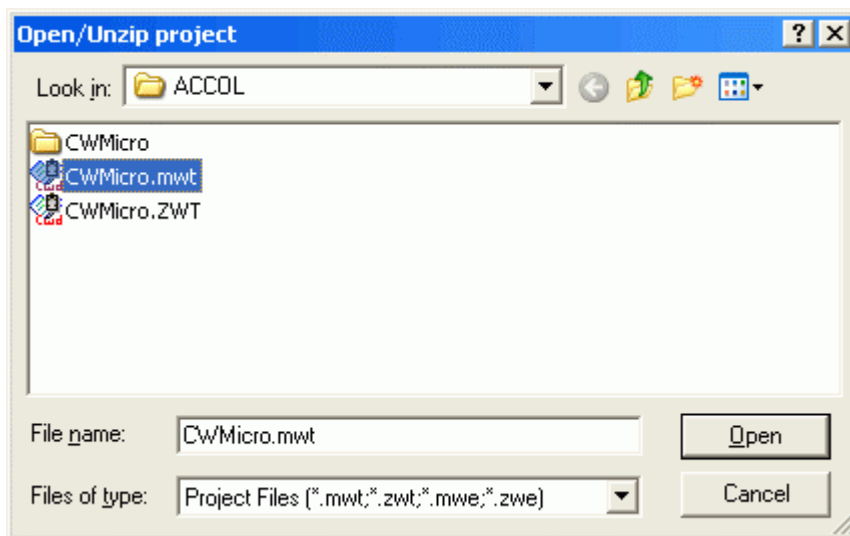
Then click **Write to RTU** to download this setting to the RTU.

After the new setting downloads, you may see a message dialog indicating that the RTU is being stopped and restarted. Click Yes to accept and close this dialog.

17. Select **Start > Programs > OpenBSI Tools > ControlWave Tools > ControlWave Designer** to open ControlWave Designer.
18. Select **File > Open Project/Unzip Project** to open the Control Strategy file you want to download to the RTU. ...

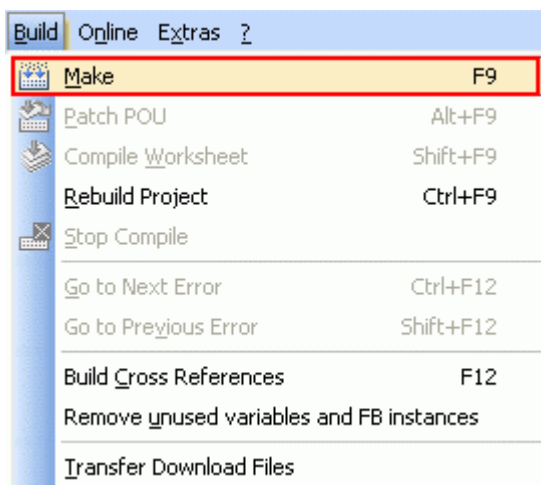


Then select the MWT file...



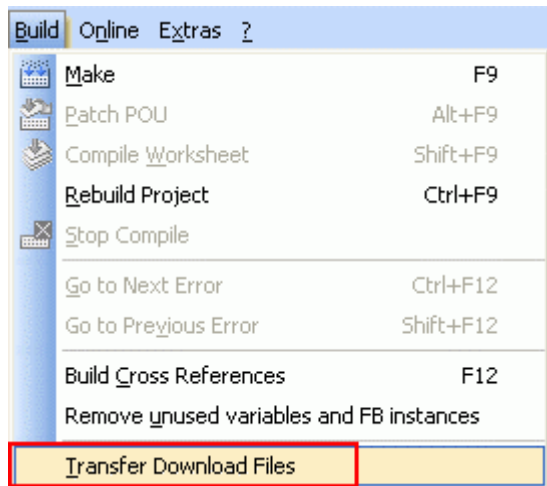
Click **Open**.

19. Select **Build > Make** and allow ControlWave Designer to build the project. You may see various warning or error messages. You can ignore warnings, but you must correct any errors before the build can continue,

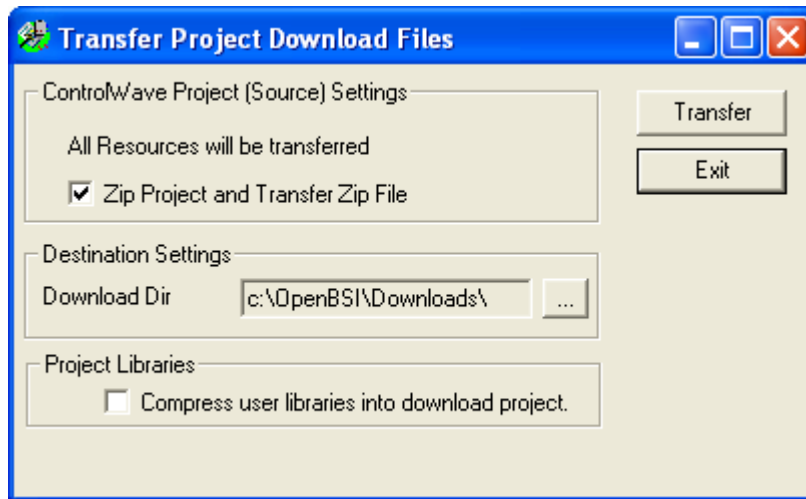


20. Select **Build > Transfer Download Files**. The Transfer Project Download Files dialog displays, and follow the prompts to transfer the download files.

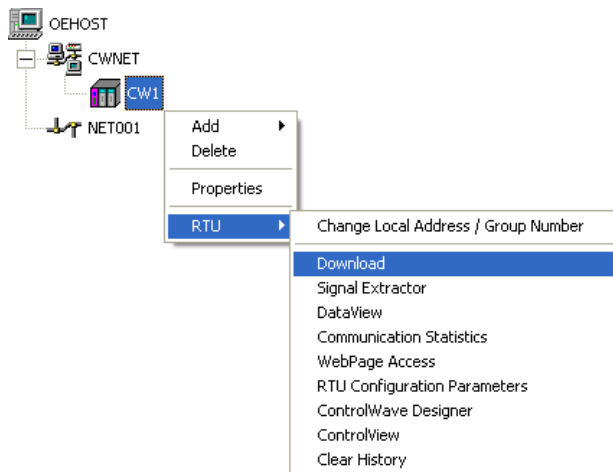




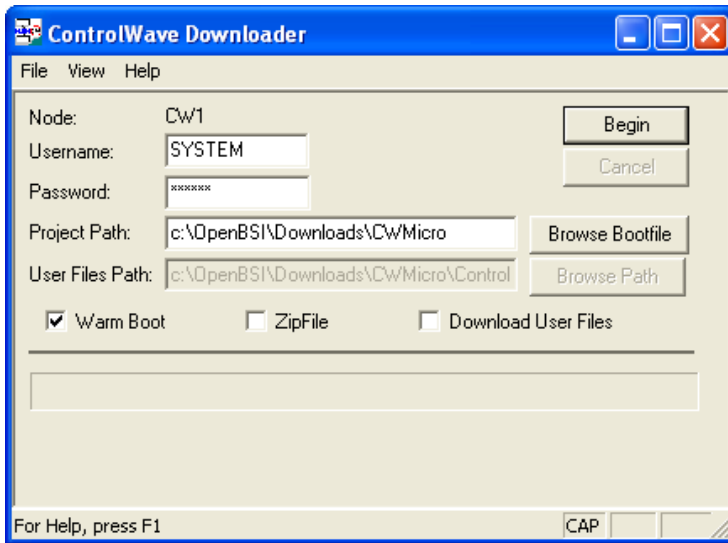
21. Select the **Zip Project and Transfer Zip File** option. Click **Transfer**.



22. You can now download the control strategy from NetView. Close ControlWave Designer and re-open Netview. Right-click on the RTU node and select **Download** to download the control strategy file from the DeltaV RTU Connect Application Station to the RTU.



23. Type the user name and password into the relevant fields.



Then click **Begin** to start the download.

### 1.5.5 Configuring Harvester

If you are using ControlWave RTUs and want to backfill historical data to the PI Server, you must also configure the Harvester utility. For information on doing this, please refer to the *OpenBSI Harvester Manual* (document number D5120, part number D301421X012) available from the [Emerson documentation web site](#).

The Harvester uses a utility called “Converter”. Instructions on how to use the “Converter” application are also found in the “OpenBSI Harvester Manual”. Later, when OpenEnterprise Server has been installed on the DeltaV Application Station, the OpenBSI Converter application will need to be pointed to the OEBACKFILL DLL file. For instructions on doing this, refer to the the following document: *NW3000 Archiving Overview* (document number D5092, part number D301506x412) available from the [Emerson documentation web site](#).

## 1.5.6 Installing OpenEnterprise Server

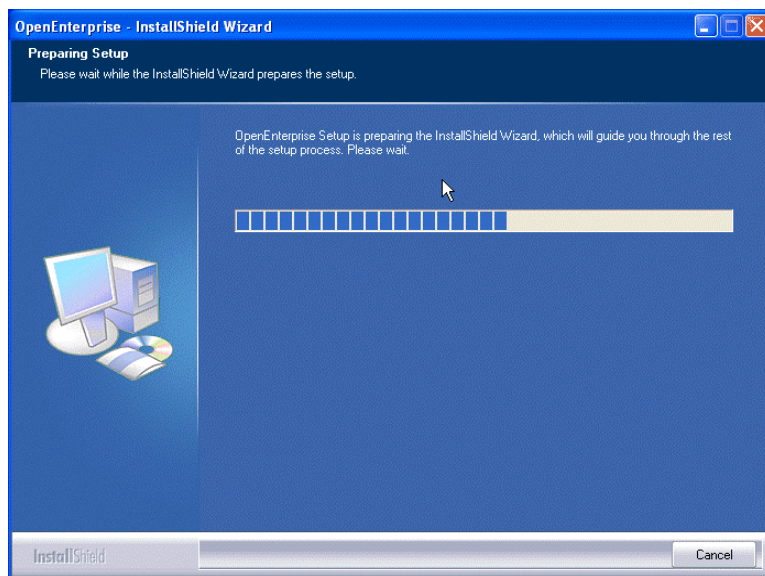
This section details the installation process for installing the DeltaV RTU Connect. Before doing this, you should have already done the following:

- Installed the RTU configuration software:-
  - OpenBSI if you are using ControlWave RTUs
  - ROCLINK 800 if you are using ROC RTUs
- Created the control strategies for each RTU (and downloaded to the RTU if using ControlWave RTUs)
- Configured NetView and Harvester if using ControlWave RTUs

Place the OpenEnterpriseV2.83 installation disc into the host machine's DVD\CD drive. If the installation does not run automatically, open the disc in Windows Explorer and double click on the OpenEnterprise.exe file.

### 1.5.6.1 Preparing Setup Dialog

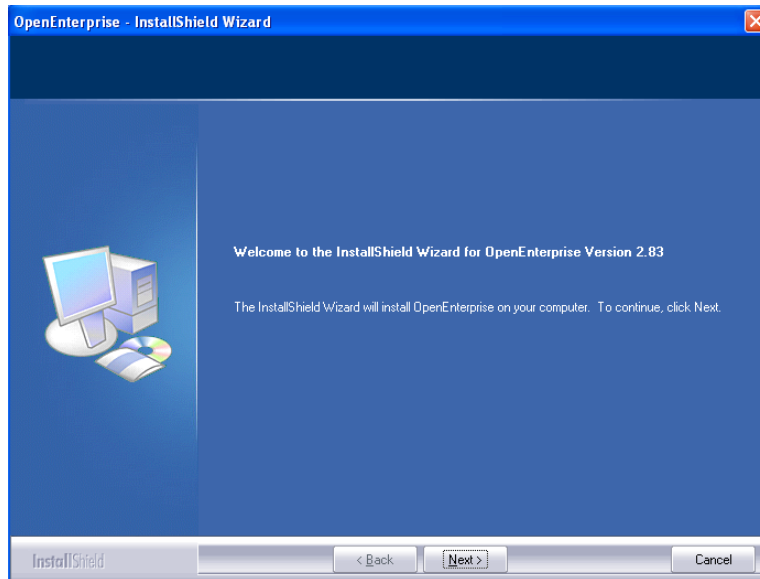
The first dialog in the Wizard shows the InstallShield wizard preparing the host machine for the installation. A blue bar informs you of progress. It is possible that this dialog opens at first behind the Main Installation dialog. To bring it to the forefront, click on it.



When preparation has finished, the Welcome Dialog opens automatically.

### 1.5.6.2 Welcome Dialog

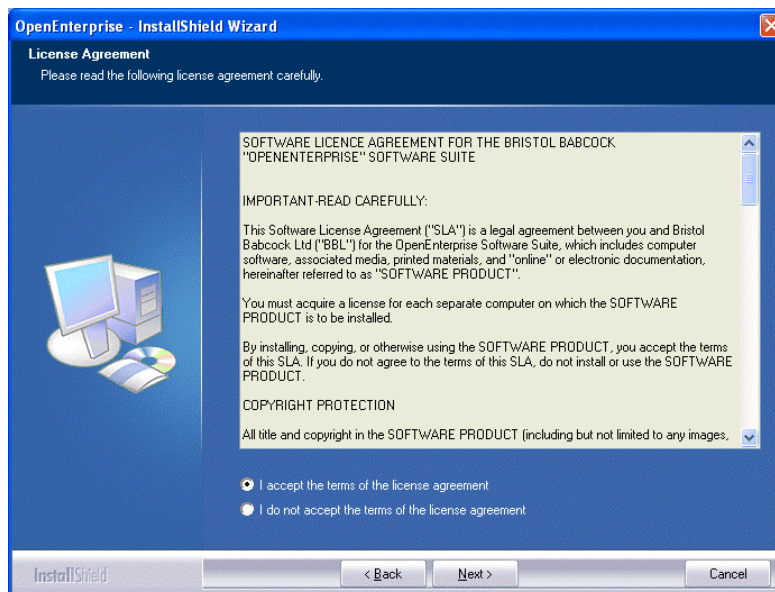
This dialog displays a 'Welcome' message.



Click **Next**. The License Agreement dialog displays.

### 1.5.6.3 License Agreement

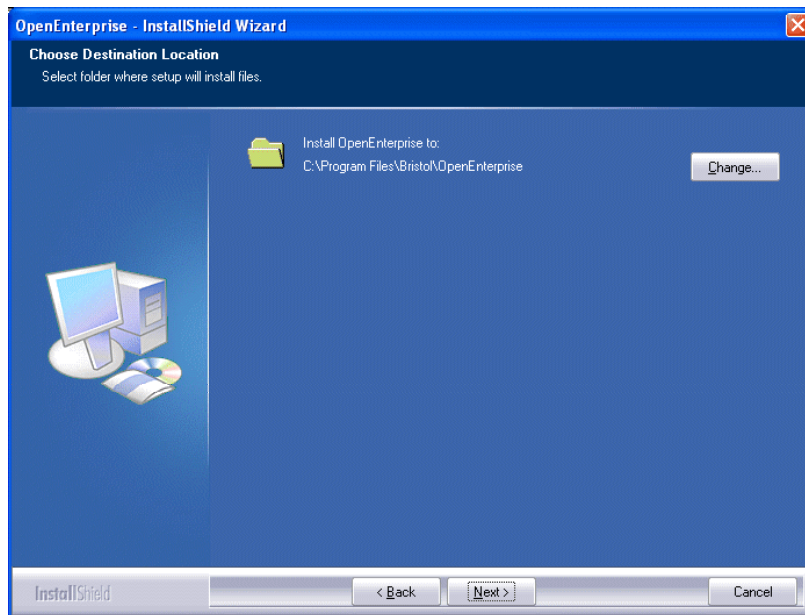
Next is the License Agreement dialog. Read through the terms of the License Agreement. You must select the "I accept the terms of the license agreement" button in order to enable the **Next** button.



Click **Next** when you are ready to continue. The Destination Location dialog displays.

### 1.5.6.4 Destination Location

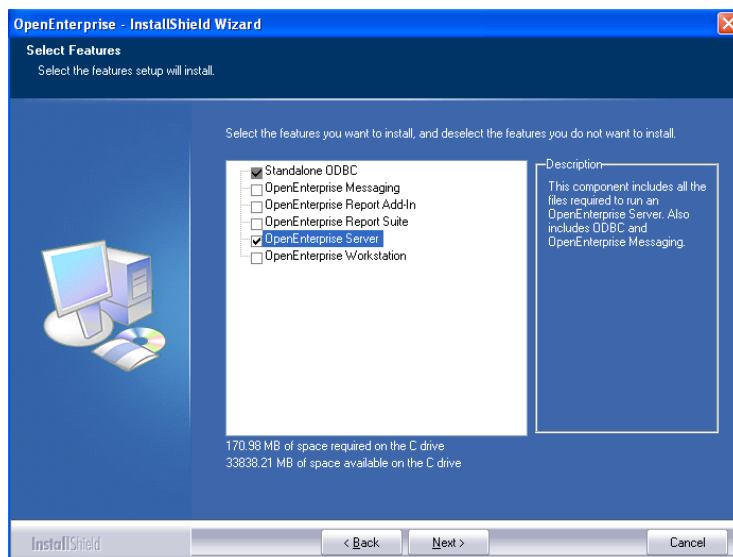
This dialog displays the installation directory. The default installation directory is 'C:\Program Files\Bristol\OpenEnterprise'. Click **Change** to select a different install location, if required.



Click **Next**. The Select Components page displays.

### 1.5.6.5 Select Features

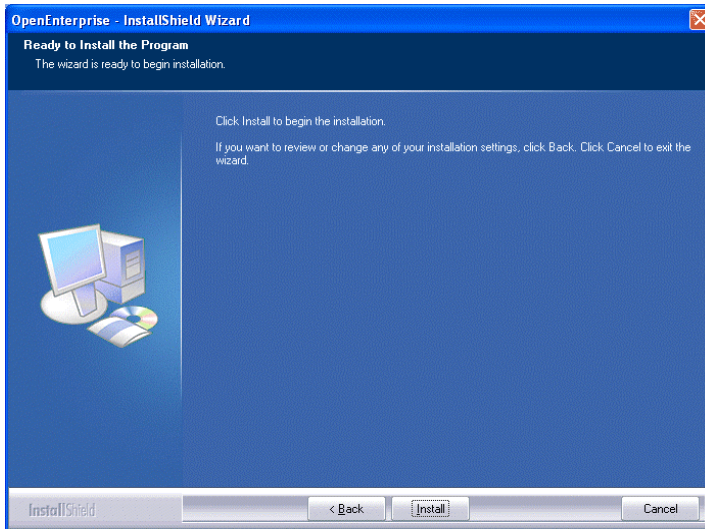
On the Select Features page, select the OpenEnterprise Server option:



Click **Next**. The Ready to Install the Program page displays.

### 1.5.6.6 Ready to Install

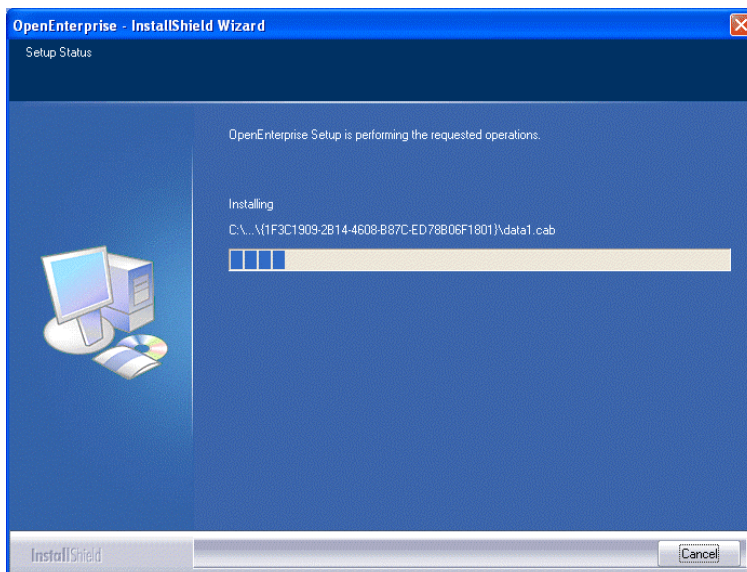
The Ready to Install the Program' dialog gives you the opportunity to revise the installation details by clicking **Back**.



Click **Install** to begin the installation and display the Setup Status screen.

### 1.5.6.7 Setup Status

The Setup Status screen shows the progress of the installation. Leave it running until the final 'Install Wizard Complete' dialog displays.



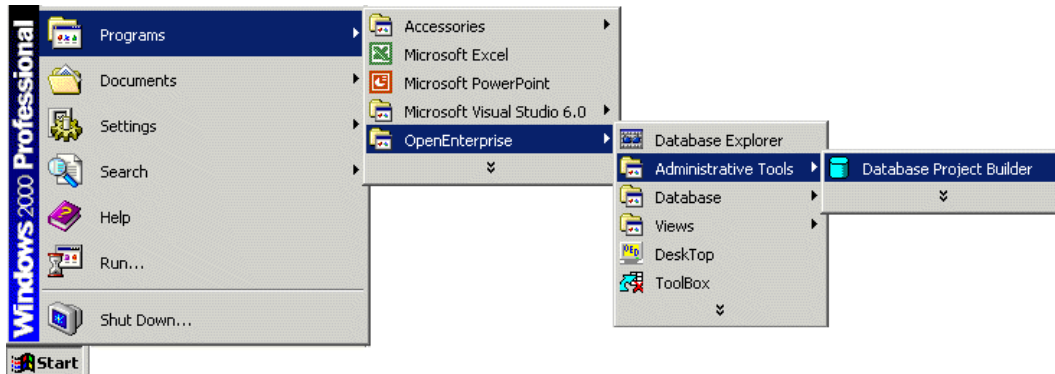
## 1.5.7 Building the OpenEnterprise Database

After you install OpenEnterprise Server, you must build the OpenEnterprise database using the Database Project Builder. This creates all the tables required to run OpenEnterprise. If you are using ControlWave RTUs the Database Project Builder can automatically insert the signals from your control strategy files into the database.

### 1.5.7.1 Starting the Database Project Builder

Click the Windows Start button and select the following shortcut:-

**Start>Programs>OpenEnterprise>Administrative Tools>Database Project Builder**



### 1.5.7.2 The Database Project Builder Wizard

The Database Project Builder (DPB) Wizard completes 12 steps which result in the building of an OpenEnterprise project specific database. You will be able to go back to any of the pages and make changes.

The Database Project Builder Wizard makes it easy for you to decide on the major configuration factors involved in building an OpenEnterprise project database, such as security structure and privileges, time zone, device drivers, and the location of the database files.

#### 1.5.7.2.1 Welcome

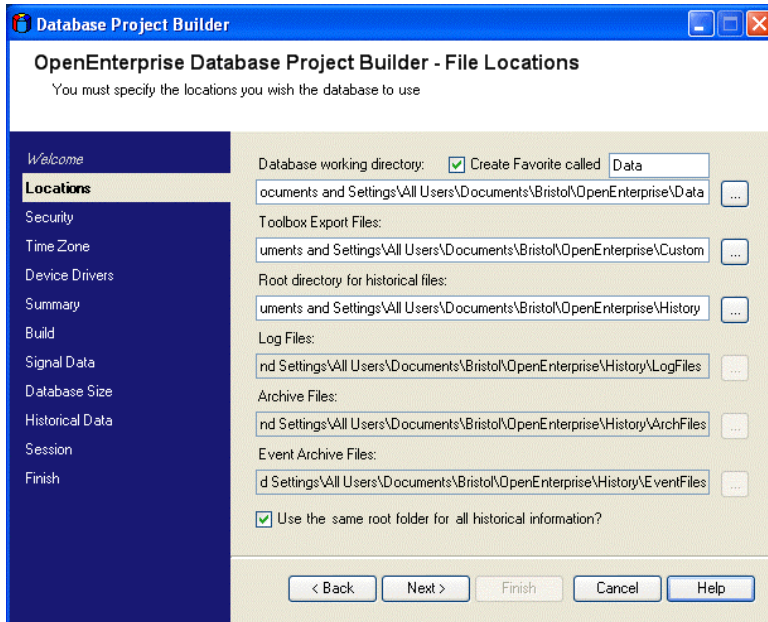
The Welcome Page is the first page of the Database Project Builder wizard.



Click **Next** to begin.

**1.5.7.2.2 Location**

This page enables you to choose the directories where the database and its related files will be placed. OpenEnterprise suggests default directories, which are shown in the example below.

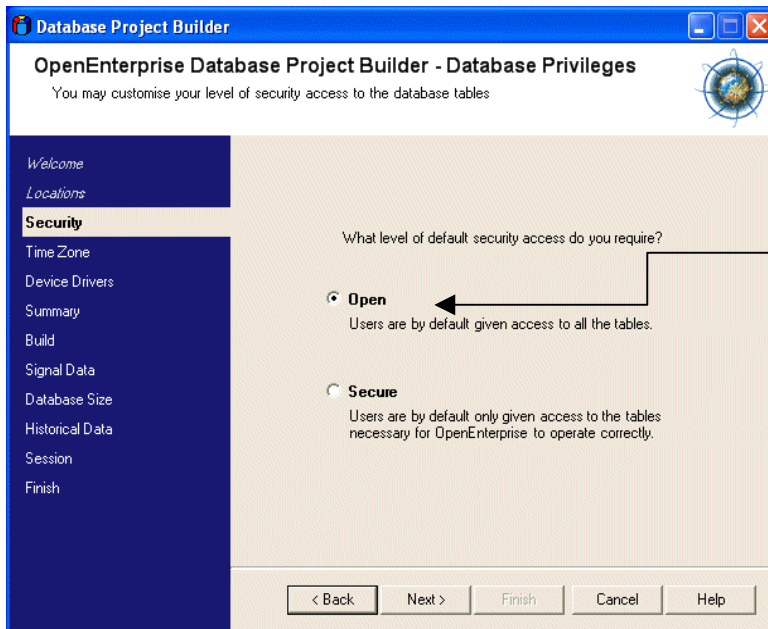


← You can use the default locations or change them by selecting the buttons on the right of each field and changing the location directories.

When you are ready, click **Next**. If you specified directories which are not yet created, Project Builder asks you to confirm that you want it to create those directories before moving on.

**1.5.7.2.3 Database Privileges**

Use the Database Privileges page to select the default table access level for the OpenEnterprise application.



← Accept the default option of Open to begin with. The database security level can be changed later.

Click **Next** to proceed.

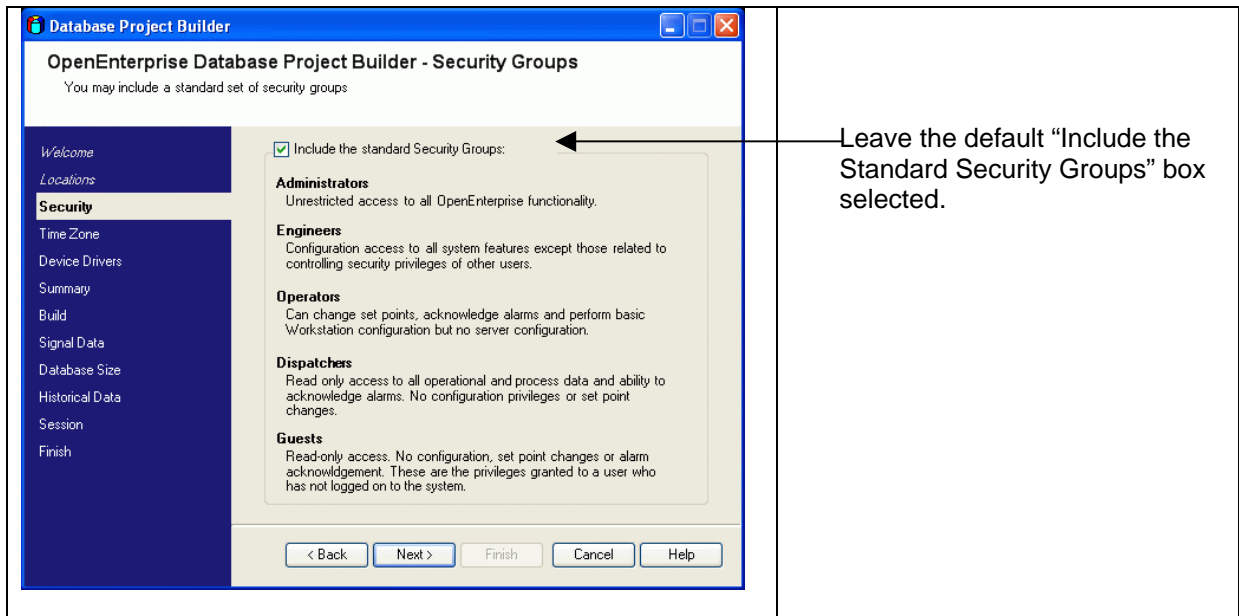


## Security and OpenEnterprise Documentation

For more information on OpenEnterprise security, see the OpenEnterprise Security Configuration and Security Group Privileges help files, which you can find by selecting Start > Programs > OpenEnterprise > Documentation once you have installed OpenEnterprise.

### 1.5.7.2.4 Security Groups

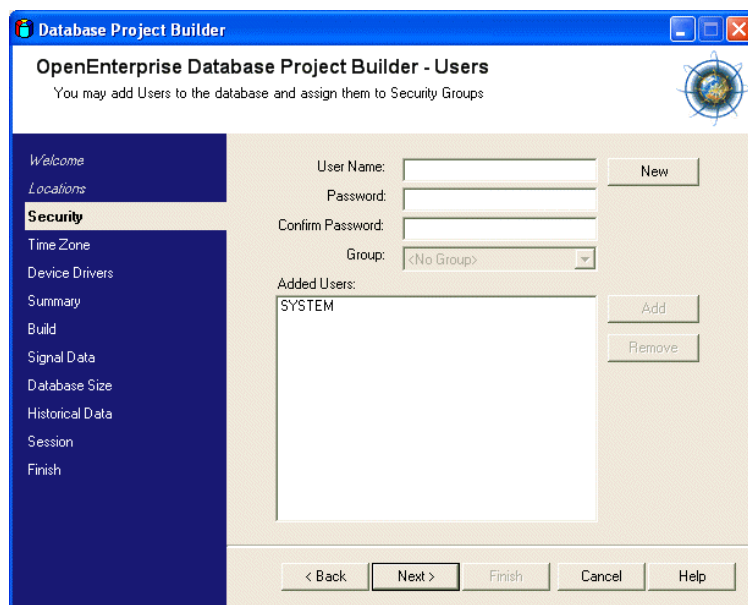
This page enables you to choose whether to automatically set up groups of users or to set up the database with no groups of users.



Click **Next**. Prior to the display of the next page, a message appears informing you that the default Administrator user (SYSTEM) has been created, along with the SYSTEM user's password. Click **OK** to accept and clear this message.

### 1.5.7.2.5 Users

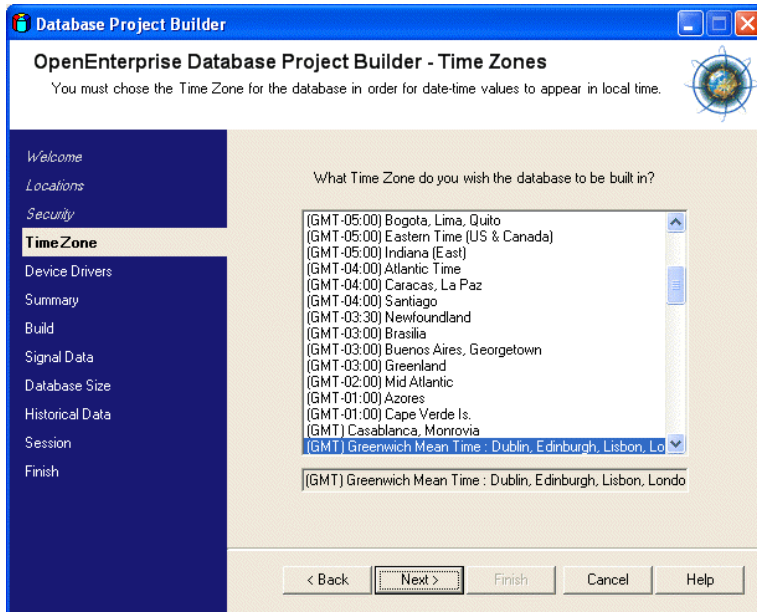
The Users page enables you to define users who can log on to the new OpenEnterprise system. You do not need to create other users at this time.



Click **Next**.

### 1.5.7.2.6 Time Zone

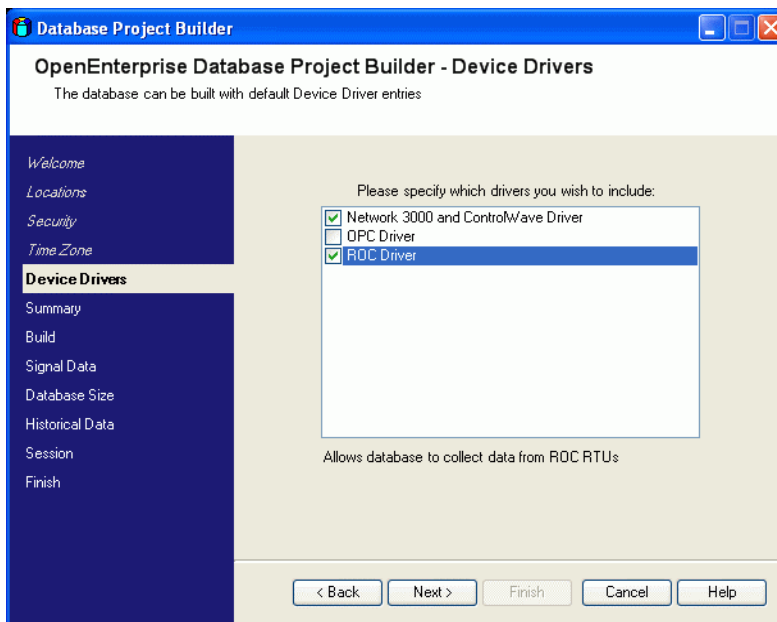
Use this page to choose the correct time zone setting for the OpenEnterprise project.



The system selects the local time zone by default. Click **Next** to proceed.

### 1.5.7.2.7 Device Drivers

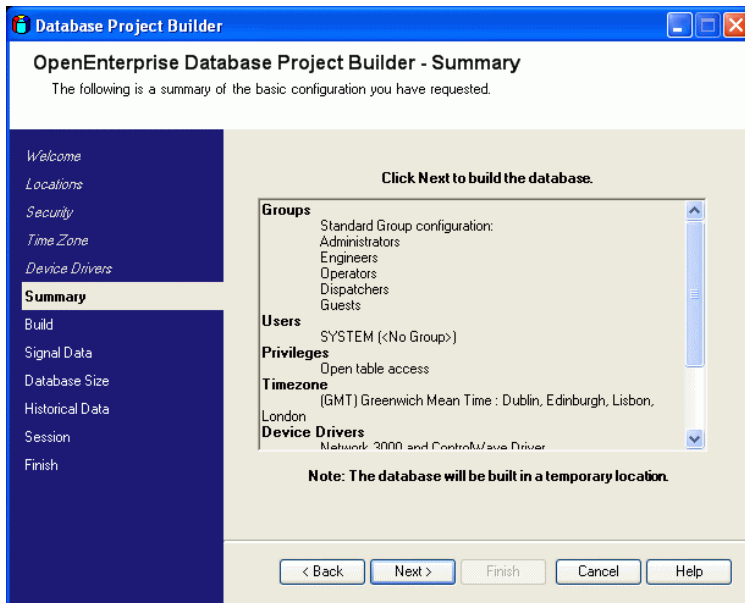
The Device Drivers page enables you to select the required device drivers. As necessary, select the “Network 3000 and ControlWave Driver” or the “ROC Driver” option. You do **not** need the “OPC Driver” option for DeltaV Connect.



Click **Next**.

### 1.5.7.2.8 Summary

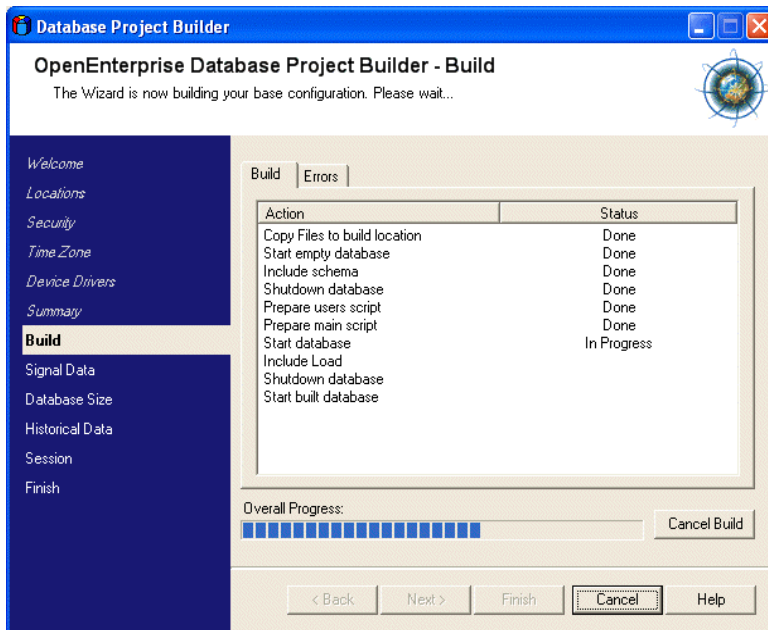
The Summary Page summarises all the options you have chosen. Read it before you continue to ensure the options are correct.



Click **Next** to proceed.

### 1.5.7.2.9 Build

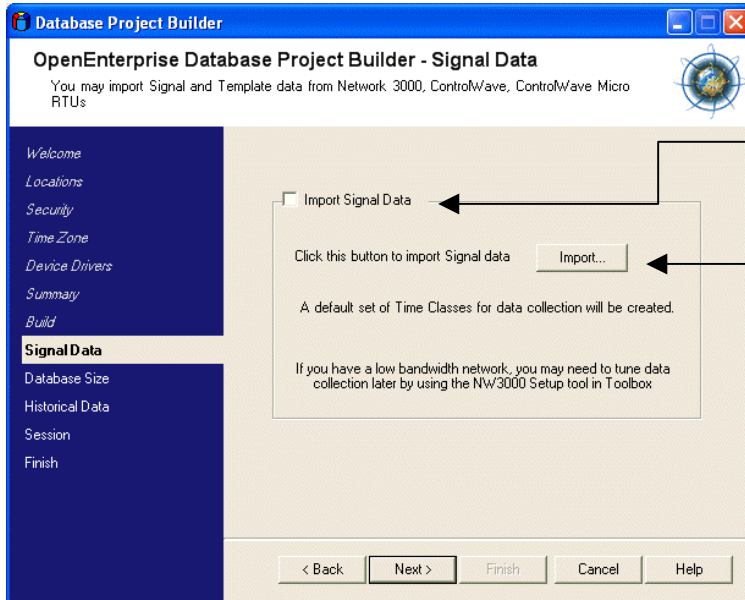
The Build page informs you of the progress of the build and display any errors encountered during the build process. During the build process, you may see messages warning you that Windows is blocking an application, and asking if you want to “unblock” it. This is normal; you should accept the unblock request. The build may take several minutes to complete.



When the build completes, the program enables the **Next** button, Click it to proceed,

### 1.5.7.2.10 Signal Data

The Signal Data page of the Database Project Builder wizard enables you to import ControlWave signal data into the database. At this stage, you should have created and downloaded the control strategy to your ControlWave RTUs. You should have also configured NetView, and it should be running. If you are using ROC or FloBoss RTUs, leave the “Import Signal Data” box unchecked.



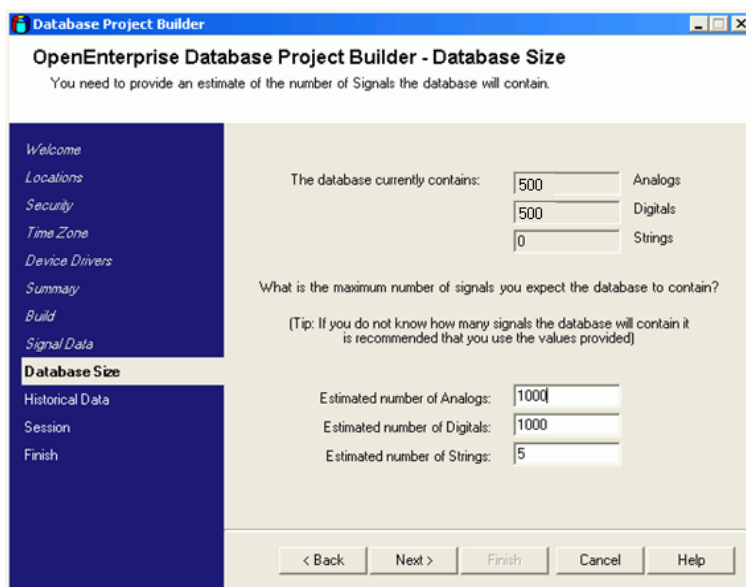
If you are using ControlWave RTUs, select the “Import Signal Data” check box

Then click **Import**.

If you click **Import**, the Database Project Builder first determines if OpenBSI is running. If not, it prompts you to start OpenBSI. You must then select the appropriate NDF file. The DPB then runs the NW3000 Database Builder to import the signals and finally prompts you to create templates. Affirm that you do want the templates. The DPB then runs the NW3000 Template Builder. Click **Next** to proceed to the next page.

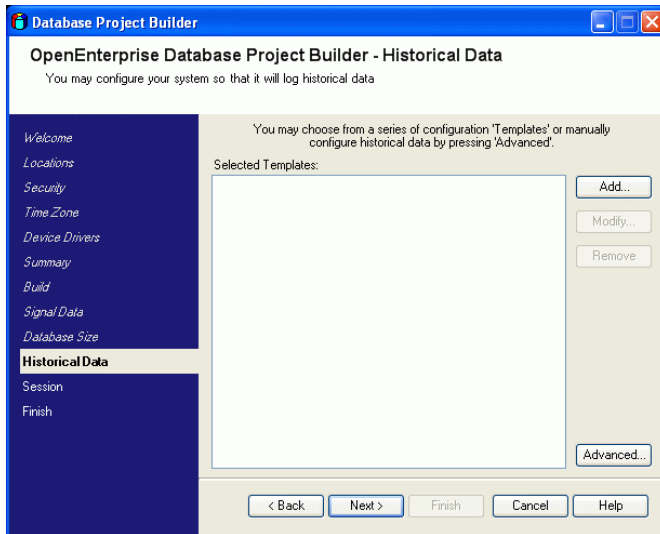
### 1.5.7.2.11 Database Size

Use the Database Size page to extend the size of the database and accommodate estimated future requirements. In the example below we have indicated that the data file should allow importation of up to 1000 analogs and 1000 digitals. The size can be adjusted later also.



Click **Next** to proceed..

### 1.5.7.2.12 Historical Data

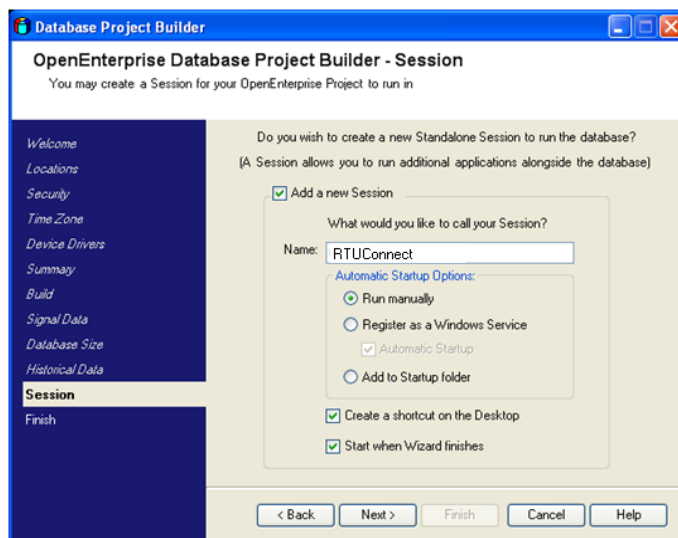


You do not need to configure any OpenEnterprise historical logging, so just click **Next** to proceed to the Session Page.

### 1.5.7.2.13 Session Page

The OpenEnterprise database cannot acquire RTU data on its own. It requires communications programs to run alongside it on the server. These programs acquire data from the connected RTUs and pass the data into the database. These Realtime Device Interfaces (RDI) communications programs are crucial to an OpenEnterprise system. Additionally, other software programs (such as the “Calculation Server” which provides internally calculated data to any clients requiring it) may run alongside the database. This dependence between the database and its ancillary tasks gives rise to the concept of an OpenEnterprise “Session”.

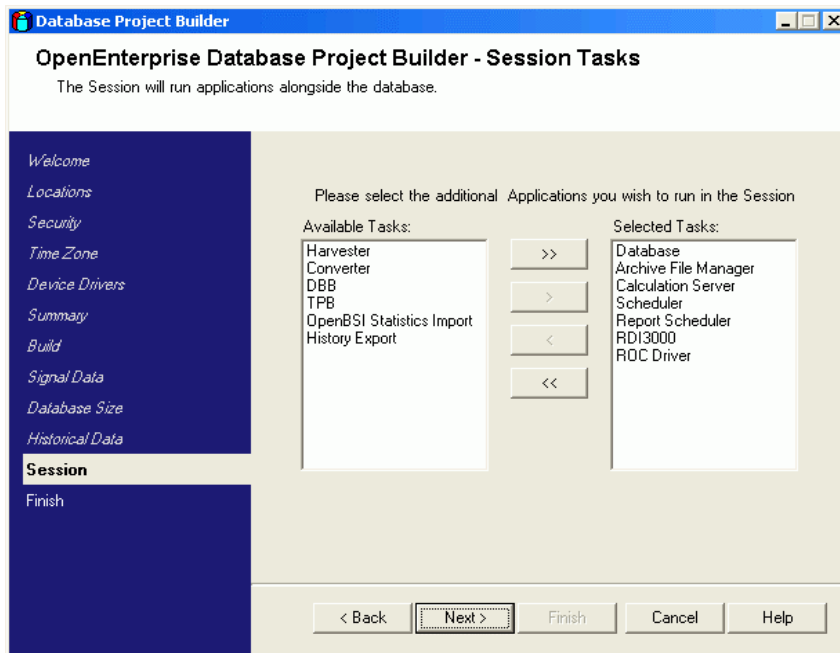
The “Session Manager” manages the database and its ancillary tasks. Use this page and the next page of the wizard to create an OpenEnterprise “session”. You only need the ControlWave and ROC RDIs to be running alongside the database as part of the session, but you still need to create a session using these two pages. In the example below we have changed the default session name to “RTUConnect”. You may choose to give it another name, or to just accept the default name of “MySession”. Note: do not use spaces when entering a name.



Accept the other default selections on this page and click **Next**.

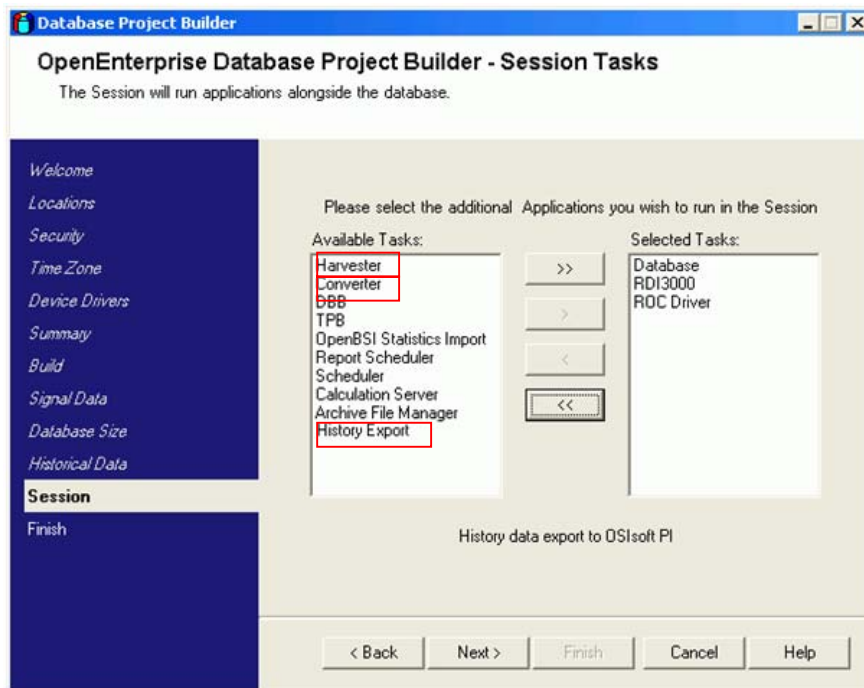
### 1.5.7.2.14 Session Tasks

The Session Tasks page enables you to select the tasks that you want to run as part of your OpenEnterprise session. The system selects a default set of tasks based on selections from previous pages in the wizard, but you can edit these selections.



Remove all tasks from the Selected Tasks list. Then move the Database, RDI3000 and ROC Driver over to the Selected Tasks list as shown in the example below.

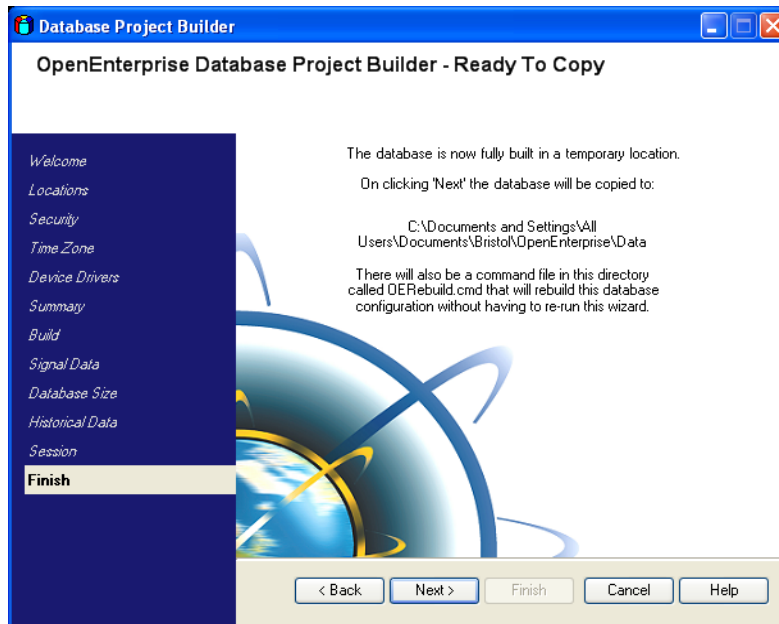
If you are going to use historical backfill with the PI Server, you also need to add the Harvester, Converter and History Export tasks (highlighted below) to the Selected Tasks list.



When you have selected the necessary tasks for your session, click **Next**.

### 1.5.7.2.15 Ready to Copy

The Ready to Copy page informs you that the database build is complete and ready to be copied into the database folder you have identified.



When you click **Next**, the system copies the database project over to the specified project directory. When the copy completes, the **Finish** button activates. Click it to exit the wizard and immediately start the session.

## 1.5.8 Adding a ROC Device

Before you can add ROC devices to the OpenEnterprise database, you need to have built the database using the Database Project Builder (see the Building the Database section). ROC Devices and signals are added to the OpenEnterprise database using the ROC Tools utility, found in the OpenEnterprise Toolbox. If you are not using ROC RTUs, you can ignore this section of the document.

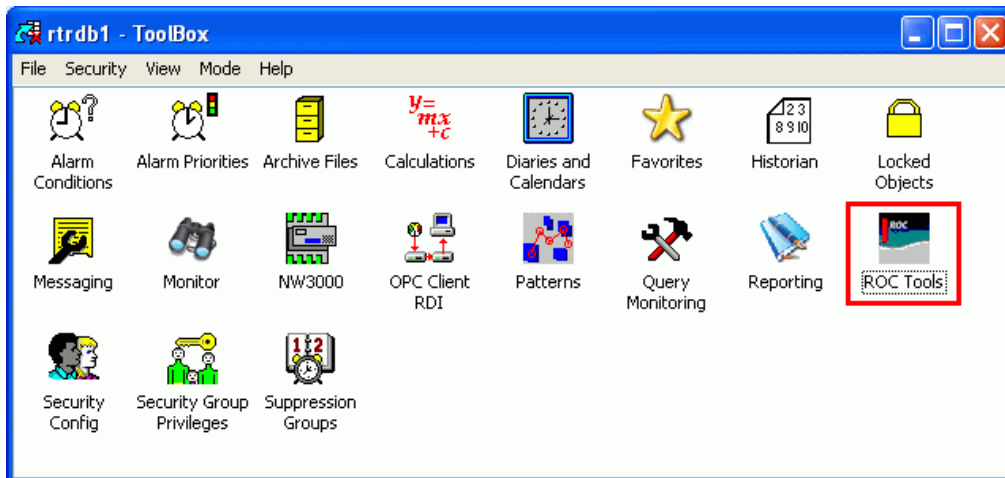
### 1.5.8.1 Starting the ROC Configuration Tool

The ROC Configuration Tool is part of the OpenEnterprise Toolbox. To open the Configuration Tool:

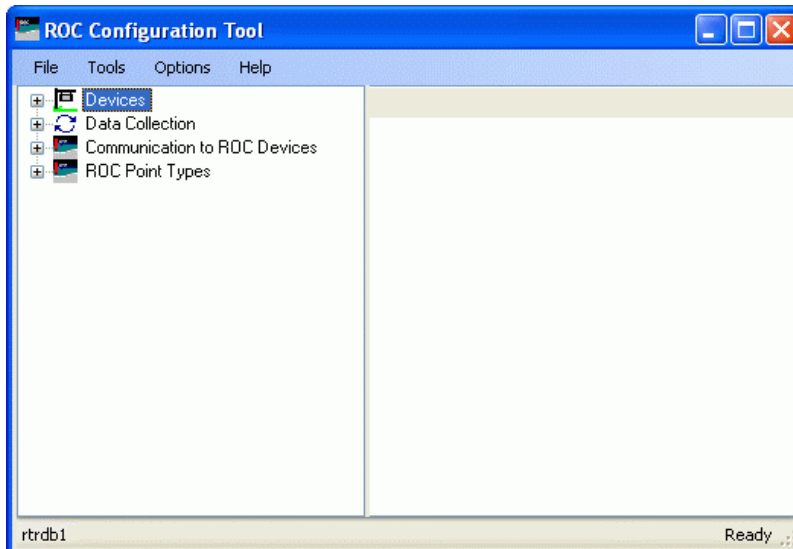
Select **Start > All Programs > OpenEnterprise > Toolbox**

The system prompt you to log in. Log in as the default SYSTEM user.

Double-click the ROC Tools icon:



The ROC Tools User Interface displays.



### 1.5.8.2 Adding a ROC Device connected via IP

Make sure you can connect to the ROC with ROCLINK. Close ROCLINK. Make sure the ROC RDI is running.

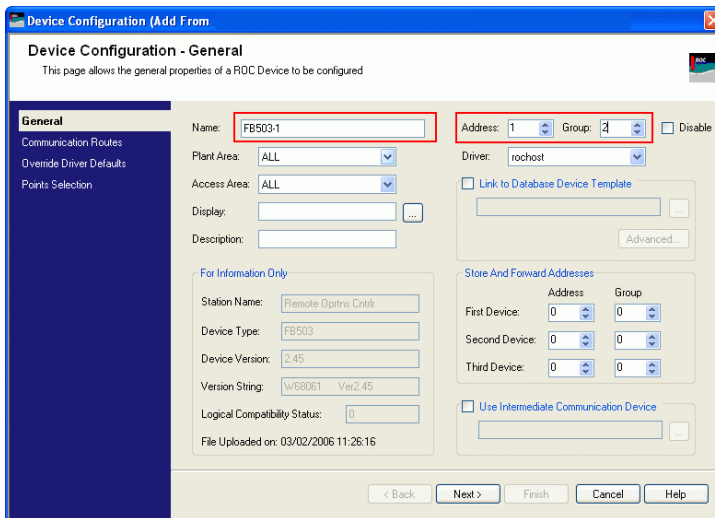
1. Select **Tools > New Device > From Connected Device** from the main menu bar of the ROC Configuration Tool.





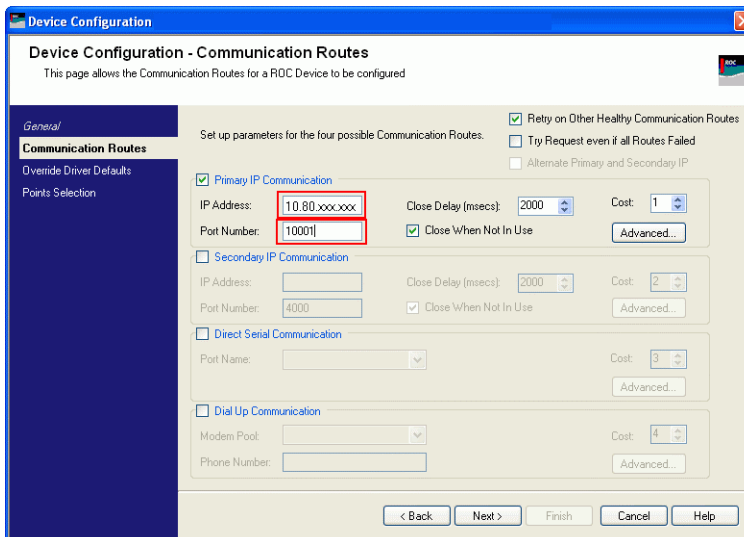
The Device Configuration wizard opens.

- On the General Page, enter options required. At a minimum, enter a name for the device and the ROC Address and Group. Note that the name you enter forms part of the signal (tag) name. Because the DeltaV system has a 16 character maximum signal name length, it's advisable to enter a short name (up to five characters) for the device.



Click **Next** to proceed.

- On the Communications Routes page, enter options required, as a minimum enter the IP Address (or network name e.g. as resolved by HOSTS file) and port number.



Click **Next** to proceed,

- On the Override Driver Defaults page, enter any options required or accept the defaults. You can accept the defaults, shown in the image below.

**Device Configuration - Override Driver Defaults**

This page allows default parameters specified in the Driver to be overridden for this ROC Device

The following values can override the default values configured for the Driver. If not set up, then the Driver default values will be used.

Override Host Address Defaults

Host Address: 3

Host Group: 1

Override Logon Parameter Defaults

Operator Id: LDI

Password: XXXX

Access Level: 0

Override TimeZone Default

Time Zone: GMT

Send Access Level on Logon

Adjust Times from ROC Device for DST

Auto-ack on receipt of ROC Device SRBX

Update Database Point with ROC Alarm Log Values

Update Database Signal with ROC Alarm Log Values

Update Database History Point with ROC Alarm Log Values

Update Database History Point with ROC Current Values

< Back   Next >   Finish   Cancel   Help

Click **Next** to proceed.

5. On the Points Selection Page, select required options. You can accept the defaults, as shown in the example below.

**Device Configuration (Add From Connected Device) - Points Selection**

This page allows points to be selected for import into the Database

For adding a device to the Database from a connected device the ROC Points within the device are unknown. Therefore selection of specific points is not possible at this stage. Detailed selection can be done after connection to the device.

**Add Points options**

Add No ROC Points to the Database

Add All ROC Points for Default Selection of Point Types to the Database

Add All ROC Points that are in the Device to the Database

Add Default Selection of Signals for any Added Points

Import All History Points that are used

< Back   Next >   Finish   Cancel   Help

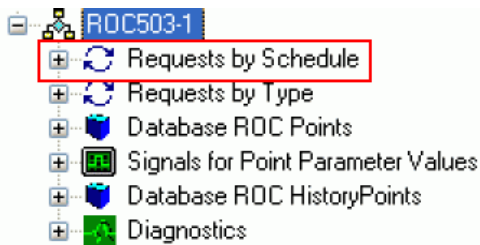
Click **Finish**. The system adds the device to the database.

## 1.5.9 Collecting Data from ROC Devices

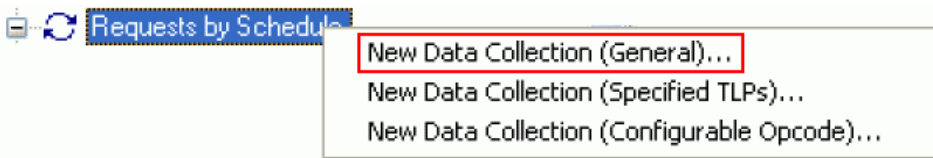
Follow the instructions below to configure signal, alarm and event data collection from ROC Devices using the ROC Configuration Tool.

### 1.5.9.1 To configure collection of analog and digital value data every 10 seconds

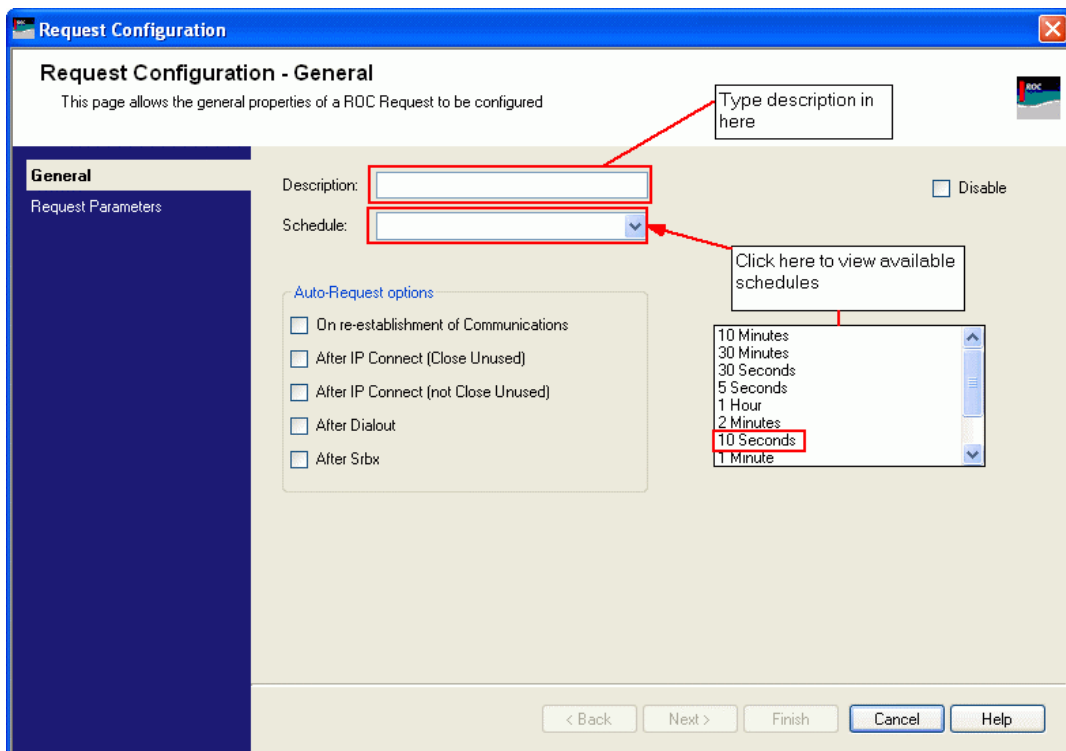
1. Expand the device required from the tree view.



2. Right-click **Requests by Schedule** and select **New Data Collection (General)**. The **Request Configuration – General** screen displays. '



3. Enter a description (such as Collect Analog and Digital Values) and select **10 Seconds** from the dropdown list for the Schedule field. Click **Next**.



4. Select **Pattern: Values** from the drop-down menu for the Point Parameters field'.

The screenshot shows the 'Request Configuration - Request Parameters (General Purpose Data Collection)' dialog box. The 'Point Parameters (optionally choose pattern)' dropdown menu is highlighted with a red box and contains the text 'Pattern: Values'. The 'Point Type Selection' is set to 'Multiple Types'.

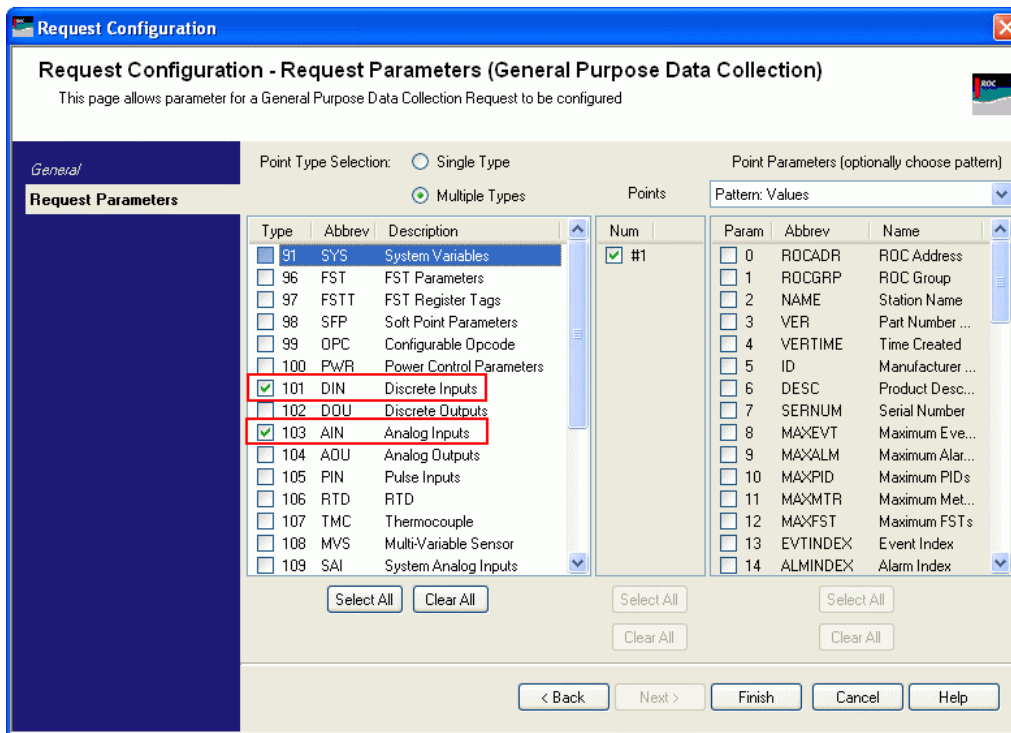
Type	Abbrev	Description	Num	Param	Abbrev	Name	
<input type="checkbox"/>	91	SYS	System Variables	<input checked="" type="checkbox"/>	#1		
<input type="checkbox"/>	96	FST	FST Parameters	<input type="checkbox"/>	0	ROCADDR	ROC Address
<input type="checkbox"/>	97	FSTT	FST Register Tags	<input type="checkbox"/>	1	ROCGRP	ROC Group
<input type="checkbox"/>	99	OPC	Configurable Opcode	<input type="checkbox"/>	2	NAME	Station Name
<input type="checkbox"/>	100	PWR	Power Control Parameters	<input type="checkbox"/>	3	VER	Part Number...
<input type="checkbox"/>	101	DIN	Discrete Inputs	<input type="checkbox"/>	4	VERTIME	Time Created
<input type="checkbox"/>	102	DDU	Discrete Outputs	<input type="checkbox"/>	5	ID	Manufacturer...
<input type="checkbox"/>	103	AIN	Analog Inputs	<input type="checkbox"/>	6	DESC	Product Desc...
<input type="checkbox"/>	104	AQU	Analog Outputs	<input type="checkbox"/>	7	SERNUM	Serial Number
<input type="checkbox"/>	105	PIN	Pulse Inputs	<input type="checkbox"/>	8	MAXEVT	Maximum Eve...
<input type="checkbox"/>	106	RTD	RTD	<input type="checkbox"/>	9	MAXALM	Maximum Alar...
<input type="checkbox"/>	107	TMC	Thermocouple	<input type="checkbox"/>	10	MAXPID	Maximum PIDs
<input type="checkbox"/>	108	MVS	Multi-Variable Sensor	<input type="checkbox"/>	11	MAXMTR	Maximum Met...
<input type="checkbox"/>	109	SAI	System Analog Inputs	<input type="checkbox"/>	12	MAXFST	Maximum FSTs
<input type="checkbox"/>	110	PID	PID Control Parameters	<input type="checkbox"/>	13	EVTINDEX	Event Index
				<input type="checkbox"/>	14	ALMINDEX	Alarm Index

5. Select **Multiple Types** from the Point Type Selection field.

The screenshot shows the 'Request Configuration - Request Parameters (General Purpose Data Collection)' dialog box. The 'Point Type Selection' radio button for 'Multiple Types' is highlighted with a red box. The 'Point Parameters (optionally choose pattern)' dropdown menu is set to 'Pattern: Values'.

Type	Abbrev	Description	Num	Param	Abbrev	Name	
<input type="checkbox"/>	91	SYS	System Variables	<input checked="" type="checkbox"/>	#1		
<input type="checkbox"/>	96	FST	FST Parameters	<input type="checkbox"/>	0	ROCADDR	ROC Address
<input type="checkbox"/>	97	FSTT	FST Register Tags	<input type="checkbox"/>	1	ROCGRP	ROC Group
<input type="checkbox"/>	99	OPC	Configurable Opcode	<input type="checkbox"/>	2	NAME	Station Name
<input type="checkbox"/>	100	PWR	Power Control Parameters	<input type="checkbox"/>	3	VER	Part Number...
<input type="checkbox"/>	101	DIN	Discrete Inputs	<input type="checkbox"/>	4	VERTIME	Time Created
<input type="checkbox"/>	102	DDU	Discrete Outputs	<input type="checkbox"/>	5	ID	Manufacturer...
<input type="checkbox"/>	103	AIN	Analog Inputs	<input type="checkbox"/>	6	DESC	Product Desc...
<input type="checkbox"/>	104	AQU	Analog Outputs	<input type="checkbox"/>	7	SERNUM	Serial Number
<input type="checkbox"/>	105	PIN	Pulse Inputs	<input type="checkbox"/>	8	MAXEVT	Maximum Eve...
<input type="checkbox"/>	106	RTD	RTD	<input type="checkbox"/>	9	MAXALM	Maximum Alar...
<input type="checkbox"/>	107	TMC	Thermocouple	<input type="checkbox"/>	10	MAXPID	Maximum PIDs
<input type="checkbox"/>	108	MVS	Multi-Variable Sensor	<input type="checkbox"/>	11	MAXMTR	Maximum Met...
<input type="checkbox"/>	109	SAI	System Analog Inputs	<input type="checkbox"/>	12	MAXFST	Maximum FSTs
<input type="checkbox"/>	110	PID	PID Control Parameters	<input type="checkbox"/>	13	EVTINDEX	Event Index
				<input type="checkbox"/>	14	ALMINDEX	Alarm Index

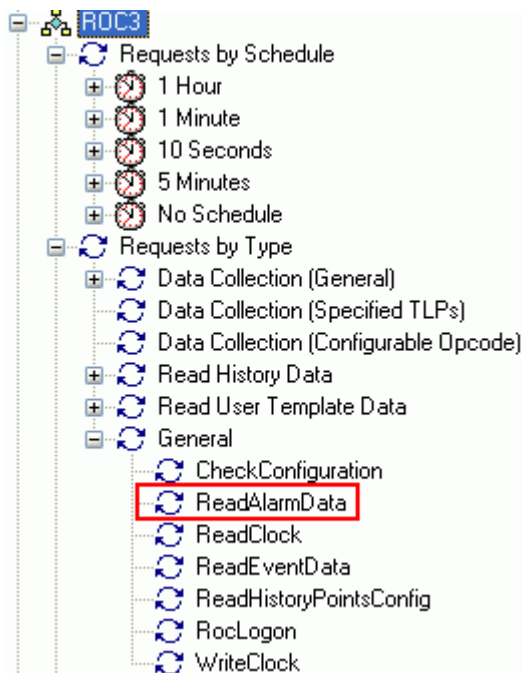
## 6. Select point types required (AIN and DIN)



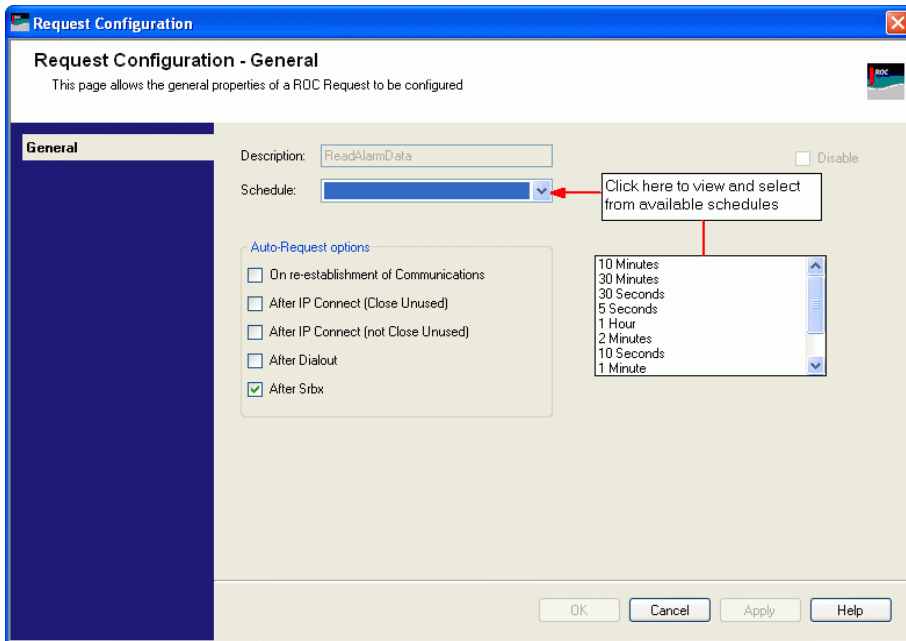
## 7. Click Finish.

### 1.5.9.2 To configure scheduled collection of alarms

1. Expand the device required from the tree view. Expand the **Requests by Type** and **General** selections. Right-click on **ReadAlarmData**. Select **Properties** from the displayed menu.



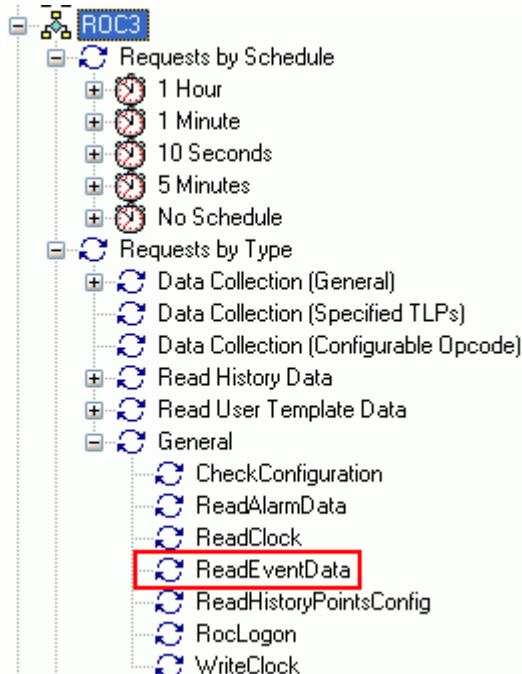
2. Select the desired schedule from the drop-down list.



3. Click **OK**.

### 1.5.9.3 To configure scheduled collection of events

1. Expand the device required from the tree view. Expand the **Requests by Type** and **General** selections. Right-click **Read Event Data** and select Properties from the displayed menu.

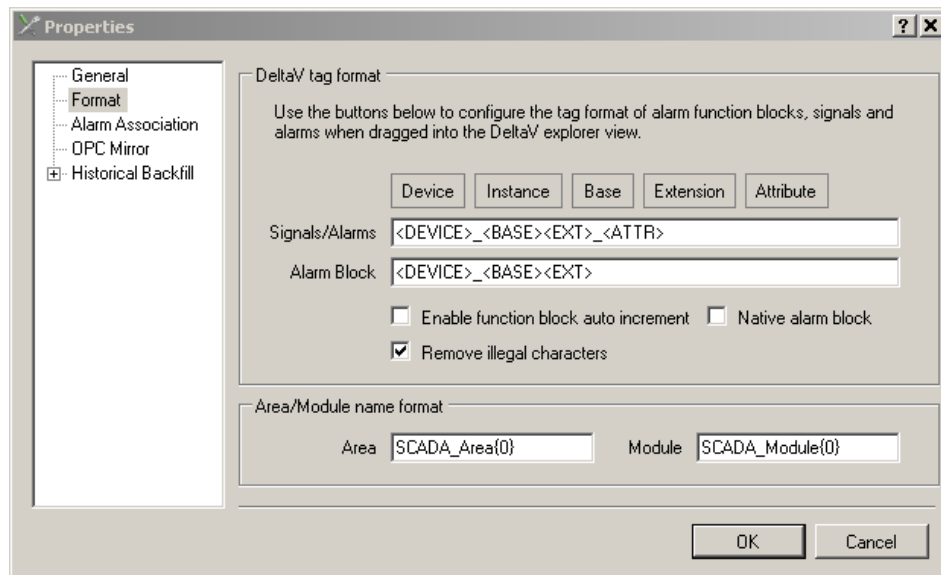


2. Select the desired schedule from the drop-down list.
3. Click **OK**.

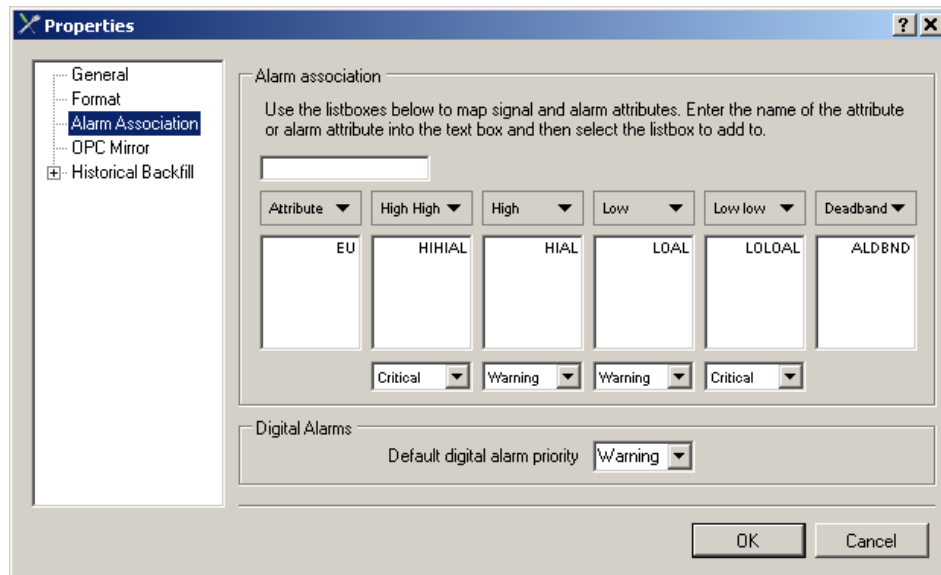
### 1.5.10 Creating the FHX File

The following instructions provide the basic steps by step directions. For more details on configuring Tag Formats and Alarm Associations, refer to the DeltaVConnect help file. The same information can also be found in Chapter 11 of the DeltaV RTU Connect Reference Guide, (Document Number D301682X412).

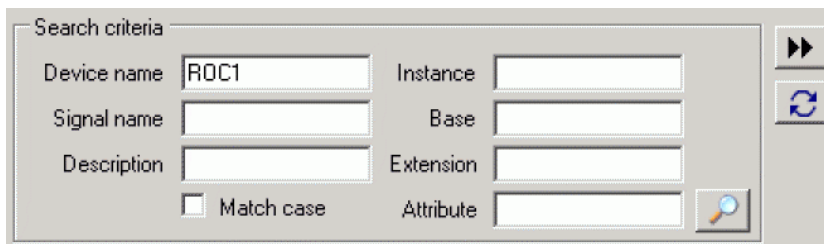
1. Open the DeltaV RTU Connect Export Tool
  - a. Select **Start > All Programs > OpenEnterprise > Toolbox**.
  - b. Double-click the DeltaV RTU Connect Export tool within the Toolbox.
2. Configure the DeltaV tag format that you want to use
  - a. Select **Tools > Properties**.
  - b. Select the Tag Format page and configure the tag formats. The defaults are typically sufficient for a ROC or FloBoss device.



3. Configure the Alarm Associations that you have used.
  - a. Select **Tools > Properties**
  - b. Select the Alarm Association page and configure the alarm associations that you have used. The defaults are typically sufficient for a ROC or FloBoss device.

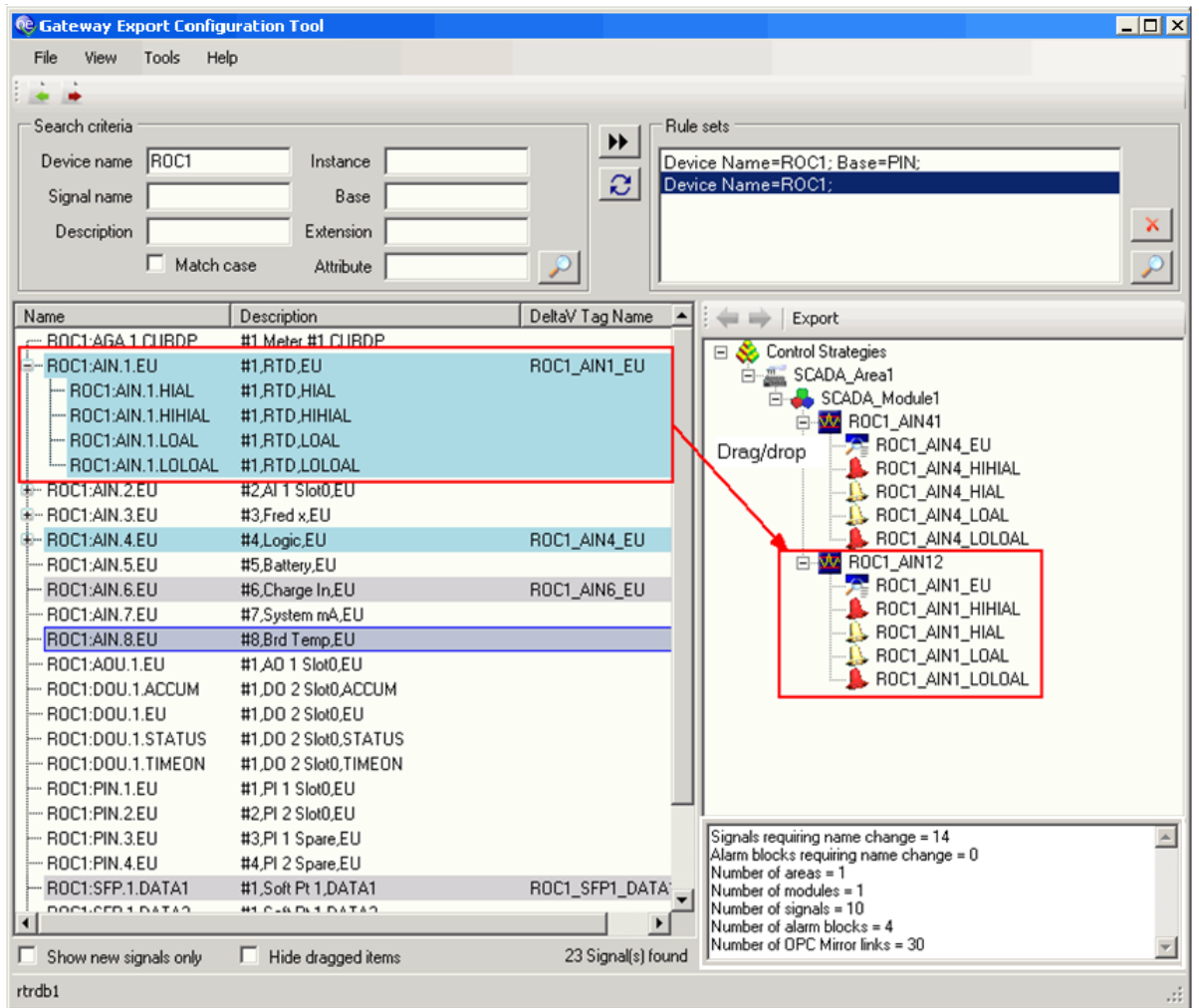


- Use the Search Criteria Controls on the main UI to create a list of the signals you want to export to DeltaV.



- Drag and drop the signals to the DeltaV Explorer pane.

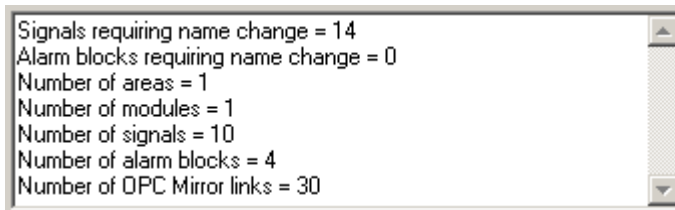




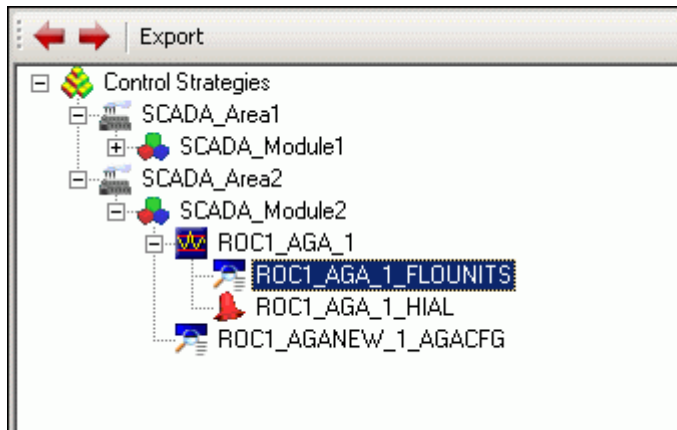
- a. If any signal names need changing, the Name Change buttons become enabled:



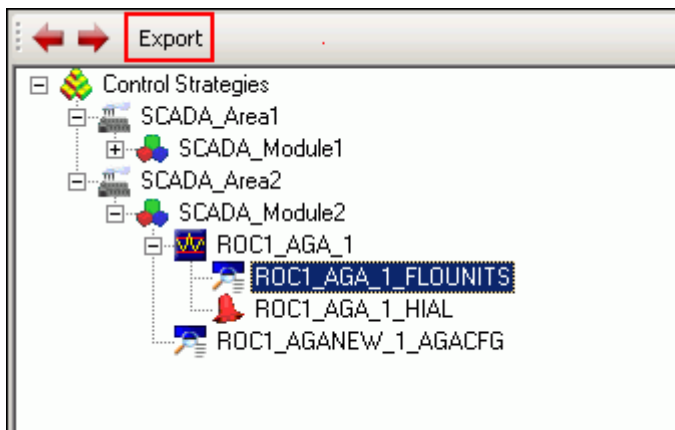
- b. The Status Pane informs you that some signals require a name change:



You can change the names one at a time by clicking on the Name Change buttons, or using the left and right cursor keys on the keyboard to scroll up and down the DeltaV explorer pane. Only tags requiring a name change are selected each time you click a button or a cursor key. You can then change the name of the selected signal.



6. When ready, click **Export** at the top of the DeltaV Explorer pane.



The DeltaV RTU Connect configuration tool creates a .FHX file that DeltaV recognizes as a control strategy file.

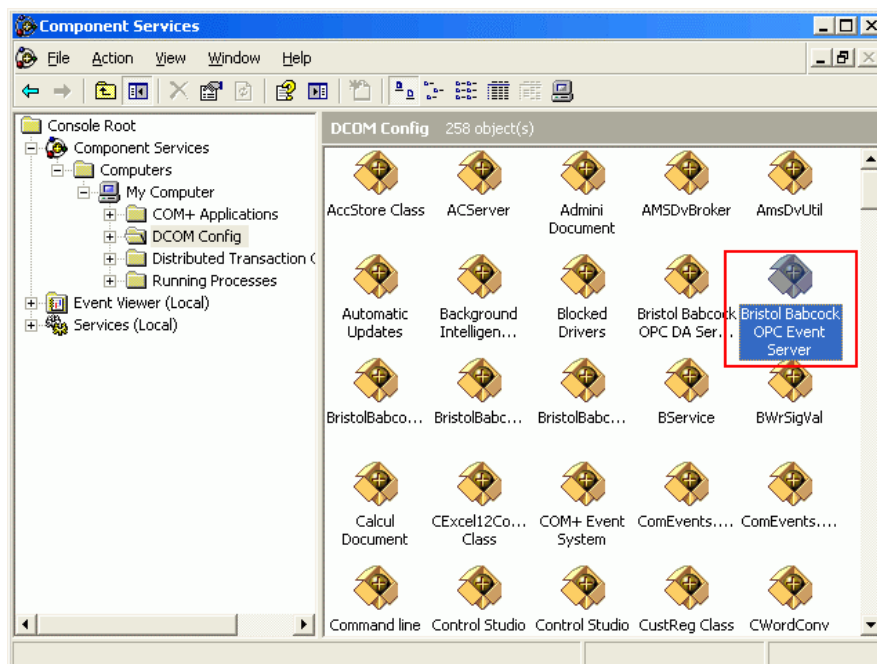
You now need to download the FHX file to your virtual controller:

1. Import the FHX file in DeltaV Explorer, assign modules and download
2. Stop and start the OPC Mirror

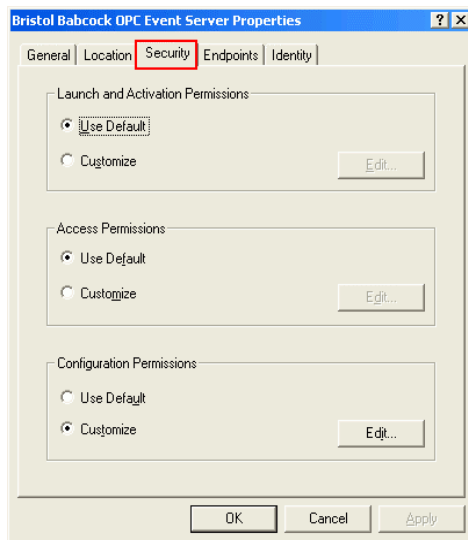
### 1.5.11 Configuring the Plant Event Historian

Once you have installed the Plant Event Historian (PEH) on Application Station #2, you need to set the system up to use the Alarm and Event (A&E) OPC server on the RTU Connect Application Station (which we call Application Station #1).

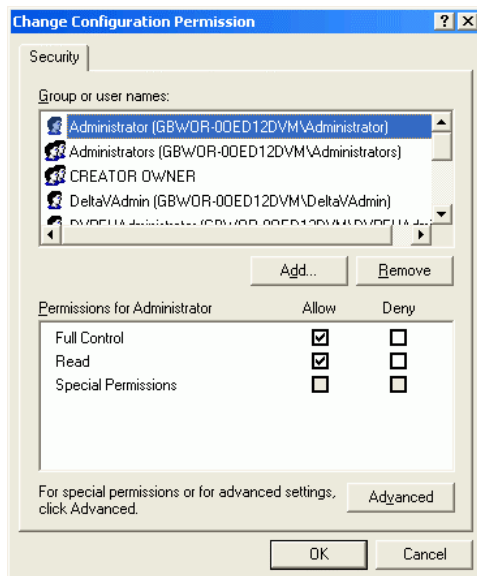
1. Ensure the Plant Event Historian OPC server has already been installed on the RTU Connect Application Station (Application Station #1).
2. Access Application Station #2 and open the PEH Configuration tool.
3. Configure the PEH OPC Server Startup File to be the RAS Alarm and Event OPC server that is on the RTU Connect App Station (Application Station #1). The server name displays as "BristolBabcock.BristolOPCEventServer" in the list of available OPC servers on the RTU Connect machine.
4. Return to the RTU Connect Application Station (Application Station #1) and configure the A&E OPC server to start under the credentials of the Administrator user:
  - a. Open the Control Panel.
  - b. Select Administrative Tools.
  - c. Select Component Services.
  - d. In the DCOM Config folder, right-click on the BristolBabcock OPC Event Server and select the Properties option from the context menu.



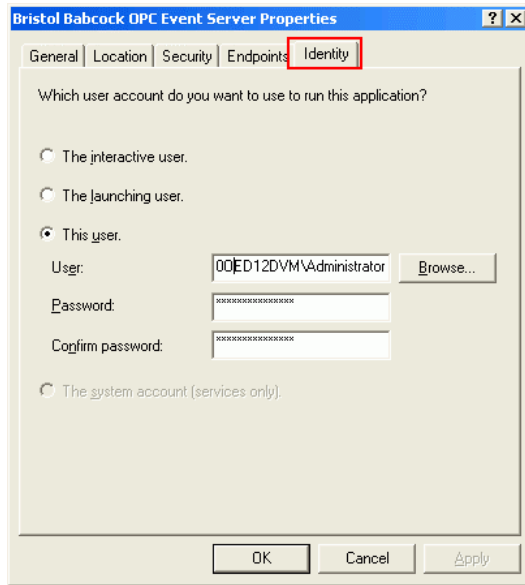
- e. Select the **Security** tab.



- f. Select **Use Default** in the Launch and Activation Permission frame.
- g. Select **Use Default** in the Access Permissions frame.
- h. Select **Customize** in the Configuration Permissions frame.
- i. Click **Edit** to display the Change Configuration Permissions dialog.



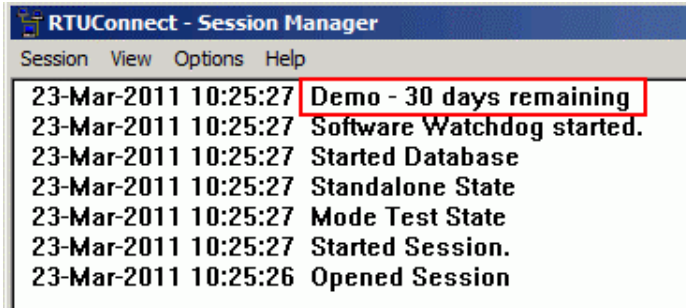
- j. Add **Full Control** and **Read** permissions to the Administrator user name.
- k. Click **OK**, The Server Properties dialog displays.
- l. Select the **Identity** tab.



- m. Select the "This User" option and add the local Administrator with username and password.

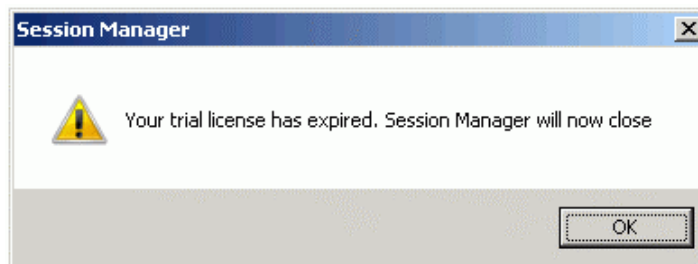
## 1.6 Licensing Information

Upon initial installation, the OpenEnterprise RTU Connect software package operates for a 30 day evaluation period. Each time you start the software the system displays a reminder message telling you that the software is a demo version, and shows you a count of the number of days remaining in the trial period. During this trial period, you can continue to run the software without registering.



**Caution**

At the conclusion of the 30-day evaluation period, the OpenEnterprise RTU Connect software package ceases to function. You will see the following message:-



You **MUST** register the software package in order to use it after 30 days. Do **NOT** attempt to set back the date on your computer in order to extend the evaluation period; doing so disables the software and terminates the evaluation period.

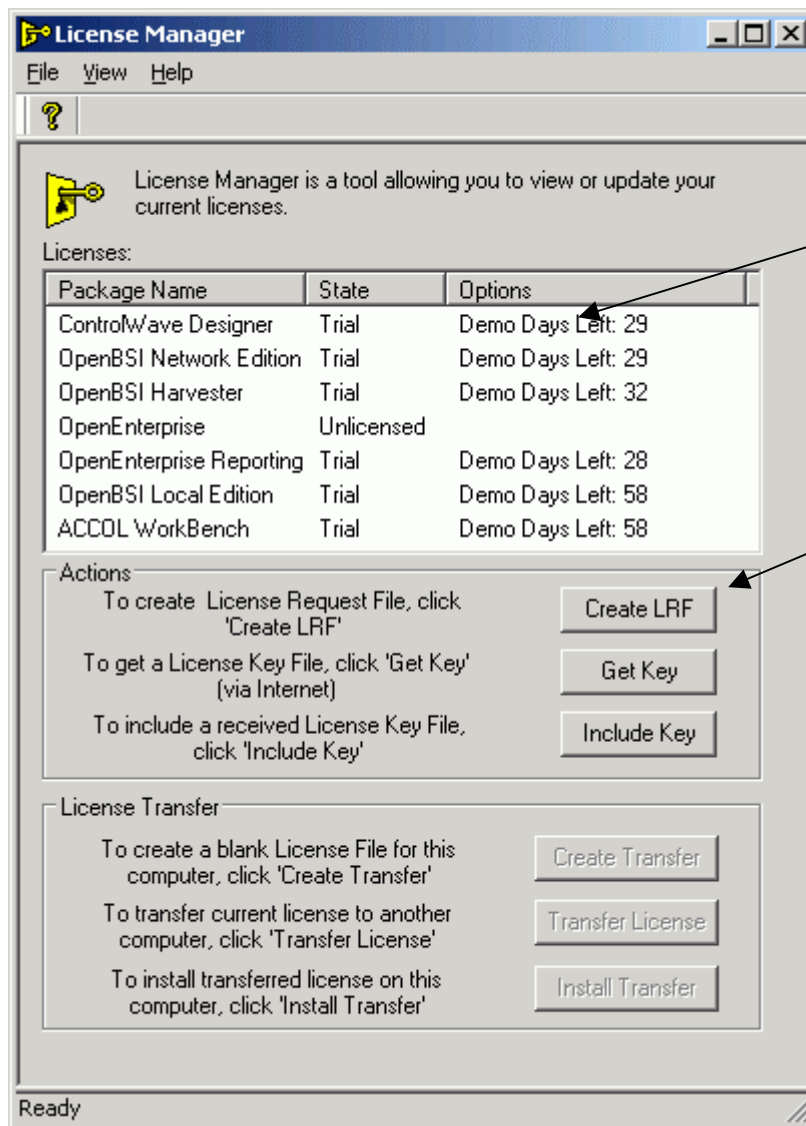
### 1.6.1 How do I Register My Software?

1. Ensure that the computer has an active Internet connection.

**Note:** If this computer does **not** have an active Internet connection, you will need access to a computer which does, and you will need a USB thumb drive (or other method) to transfer the license file between the Internet-connected computer, and the computer on which you have installed the software.

2. Start the License Manager software, on the computer containing the newly installed software packages, using the sequence: **Start > Programs > Bristol Babcock Licensing > License Manager**.
3. The License Manager examines your PC, and identifies in a list, which OpenBSI / OpenEnterprise software packages are installed on this computer. Any package that is not registered shows as **Trial** in the **State** field. Click **Create LRF** to generate a License Request File (\*.LRF) and save the file on your PC. **Leave the License Manager session running**.

**Note:** Make note of where on this computer you save the LRF file, because you will need it later.



This list shows the software packages currently installed on this computer and their licensed status

Click **Create LRF**

- Click **Get Key**, and your Internet browser brings you to the Software Registration area of the Emerson Remote Automation Solutions website. Alternatively, in your browser, go to:

[http://www2.emersonprocess.com/en-US/brands/remote/systems\\_and\\_software/supportnet/Pages/license\\_registration.aspx](http://www2.emersonprocess.com/en-US/brands/remote/systems_and_software/supportnet/Pages/license_registration.aspx)

**Note:** If this computer does **not** have internet access, transfer the \*.LRF file you just created to a computer which does have internet access. You might need to copy it to a CD, use a USB thumb drive, or transfer it by other means. Once you load it onto the other internet-capable computer, use the URL in step 4 to proceed with the registration.

### Register Your Bristol OpenBSI Software

Please enter your **customer id and password**, normally supplied by Remote Automation Solutions when you purchase the software. If you do not have a customer id please contact our [Technical Support team](#).

Customer Id:

Password:

5. Enter your **Customer Id** and **Password** and click **Sign-On**.

**Note:** You can find the **Customer Id** and Password on a label affixed to the outside of your OpenBSI / DeltaV RTU Connect CD-ROM package.

6. Now you have two options. You can view which licenses have been purchased and are available for you to register, or you can skip that step and proceed to register your software. To view the available licenses, go to step 7. To register the software, skip to step 8.

### Register Your Bristol OpenBSI Software

Please enter your **customer id and password**, normally supplied by Remote Automation Solutions when you purchase the software. If you do not have a customer id please contact our [Technical Support team](#).

To register (unlock) your software, please select the [Register](#) option. You will need a License Request File to register your software.

To view your license purchases, please select the [View](#) option.

7. To view which software packages have been purchased for this particular **Customer Id** number, as well as how many of those licenses are already in use, click the [View](#) link. The View Software Licenses page opens. You may need to use the scroll bar to locate the product you want to view.



### View Software Licenses

Product Name	Available	Quantity Ordered	Options
Essentials	4	4	
CW Designer	1	1	
Harvester	4	4	
OpenEnterprise	4	4	

Field	Description
<b>Product Name</b>	This displays the name of the software packages for which licenses have been purchased using your <b>Customer Id</b> number. In addition to OpenBSI packages other software products such as OpenEnterprise packages are displayed.
<b>Available</b>	This displays the number of licenses out of the total number purchased which have not been registered for use. If the <b>Available</b> number is <b>0</b> , you cannot register a new copy of this particular package.
<b>Quantity Ordered</b>	This displays the total number of licenses purchased using this <b>Customer Id</b> number.
<b>Options</b>	Any options available (such as being able to update the information displayed) will be shown here.

8. To register your software, click the [Register](#) link. The Registration Information page opens.

#### Register Your Bristol OpenBSI Software

Please enter your **customer id and password**, normally supplied by Remote Automation Solutions when you purchase the software. If you do not have a customer id please contact our [Technical Support team](#).

You need to supply a License Request File to register your software. When registration is complete, a key file will be made available for download. This key file should then be used to unlock the software on your computer. A copy of the Key file will also be automatically e-mailed to the entered E-Mail Address.

After entering your details, please press the **Next** button.

Your Name:

E-Mail Address:

Verify E-Mail:

License Request File:

9. Enter your name in the **Your Name** field, and your e-mail address in *both* the **E-mail Address** and **Verify E-Mail** fields. Then use the **Browse** button to locate the license request file you generated previously in Step 3. Finally, click **Next**. The Unlock Software Licenses page opens.

**Note:** The website will send you an e-mail with an attached unlock key file to the e-mail address you specify here.

10. Click the **Unlock** checkbox for the product(s) you want to register, then click **Submit License Request** to send the license request to the website.

**Unlock Software Licenses**

Please select the products to unlock by ticking the appropriate Unlock check box(s).

Product Name	Available	Quantity Ordered	Options	Unlock ?
Essentials	4	4		<input type="checkbox"/> Unlock
CW Designer	1	1		<input type="checkbox"/> Unlock
Harvester	4	4		<input type="checkbox"/> Unlock
OpenEnterprise	4	4		<input type="checkbox"/> Unlock

[Submit License Request](#)

11. If the license request is successful, the website generates a key file you can use to unlock your software. Click [Key file](#) to download a copy of the key file. (The website also e-mails you a copy of the key file at the e-mail address you entered in step 9.)

**Note:** If the computer which contains the locked software does **not** have internet access, you need to transfer the key file back to that computer to complete the registration process.

**Unlock Software Licenses**

Your unlock request has completed successfully.

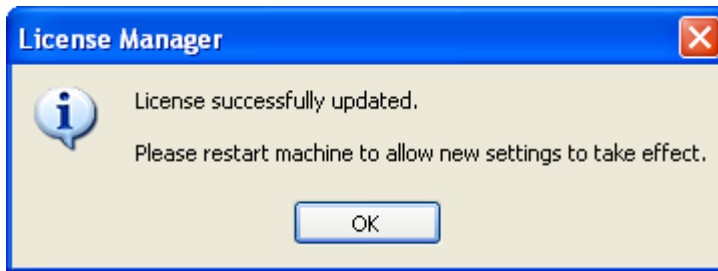
Please download, save and apply the Key file using the License [Key file](#)

A copy of the Key file has also been emailed to your e-mail address

12. In order to complete the registration process, the key file you received must reside on the PC containing the newly installed software packages. Go back to the License Manager session you started in Step 3. (If you shut the License Manager down, restart it by clicking **Start > Programs > Bristol Babcock Licensing > License Manager**.)

13. To apply the key file, click the **Include Key** button and specify the location of the key file.

14. If the registration completes successfully, you will see a message box. Just click **OK** and you're done. Reboot your PC for the new licenses to be activated.



## 1.6.2 How to Transfer a License from One PC to another PC

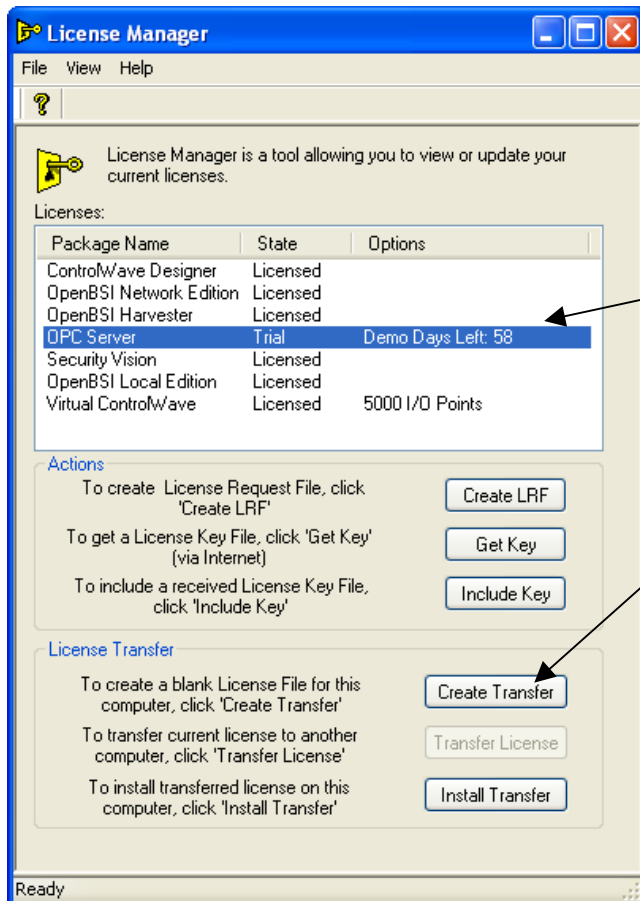
Occasionally, it may be necessary for you to transfer an OpenBSI software license from one computer, to another computer. This might be necessary, for example, if you are upgrading to a newer computer, and want to shift your OpenBSI license to the newer computer, and remove it from the older computer.

In this explanation, the computer which is giving up its license will be referred to as the **source computer** and the new computer which will receive the transferred license will be referred to as the **destination computer**.

**Note:** In order to transfer the license, the license on the source computer must already be registered, and the software must have already been installed on the destination computer.

1. Start the License Manager software, on the destination computer, using the sequence: **Start > Programs > Bristol Babcock Licensing > License Manager**.
2. Select the unlicensed package you want to change from a trial / demo package, into a licensed package, and generate an empty transfer request file.

**Note:** The transfer request file you create must be read-write. It cannot be a read-only file.

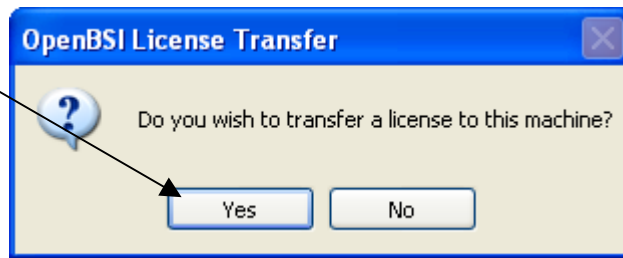


First, select the unlicensed package for which you want to obtain a license for from another computer.

Then click **Create Transfer**

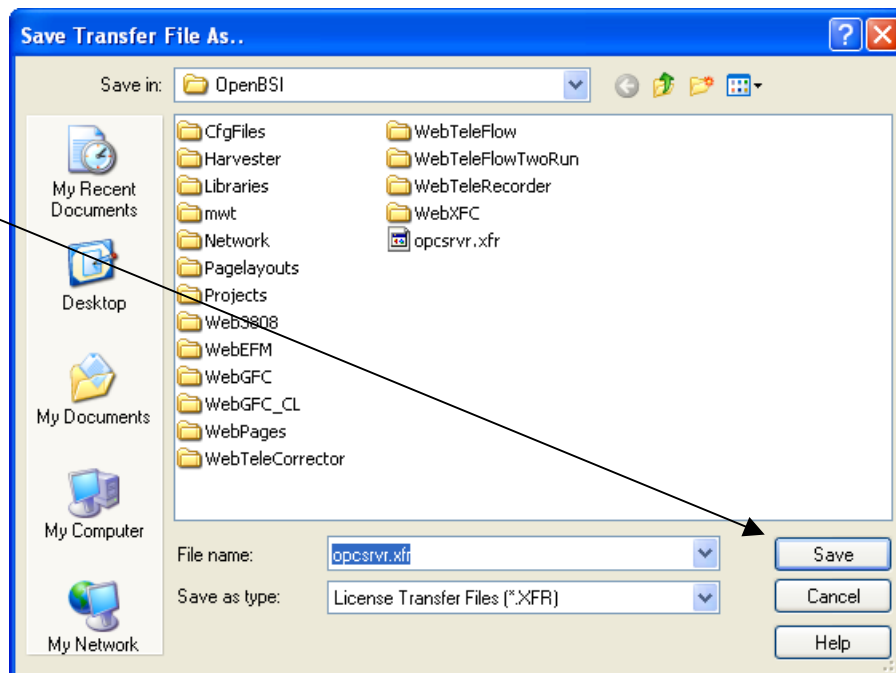
3. Answer **Yes** to the prompt.

Click **Yes**.



4. Save the empty transfer (\*.XFR) file.

Click **Save** to create the empty transfer file.



5. Click **OK** when the file is created.

Click **OK**.

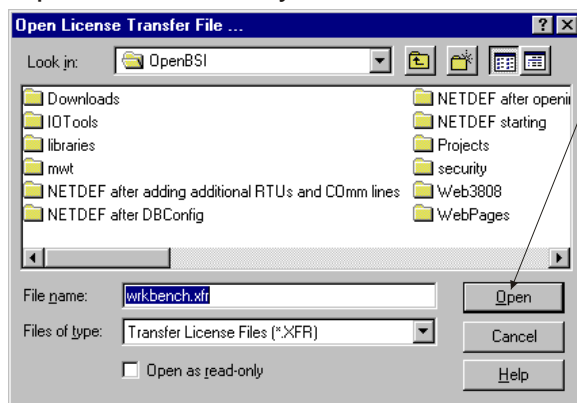


6. Copy the XFR File you just saved onto the **source** (licensed) computer. You can transfer it via a USB thumb drive, e-mail, etc.

Start the License Manager software, *on the destination computer*, using the sequence: **Start > Programs > Bristol Babcock Licensing > License Manager**.

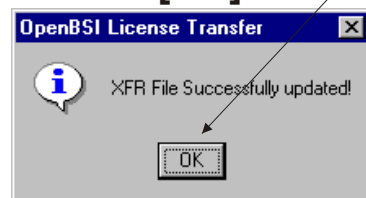
7. Now, you must transfer the license of the software package, into the transfer (\*.XFR) file you created in Step 5. In the License Manager, select the license you want to transfer and click **Transfer License**.
8. Now locate the XFR file you created earlier and click **Open**.

Open the XFR file you created earlier

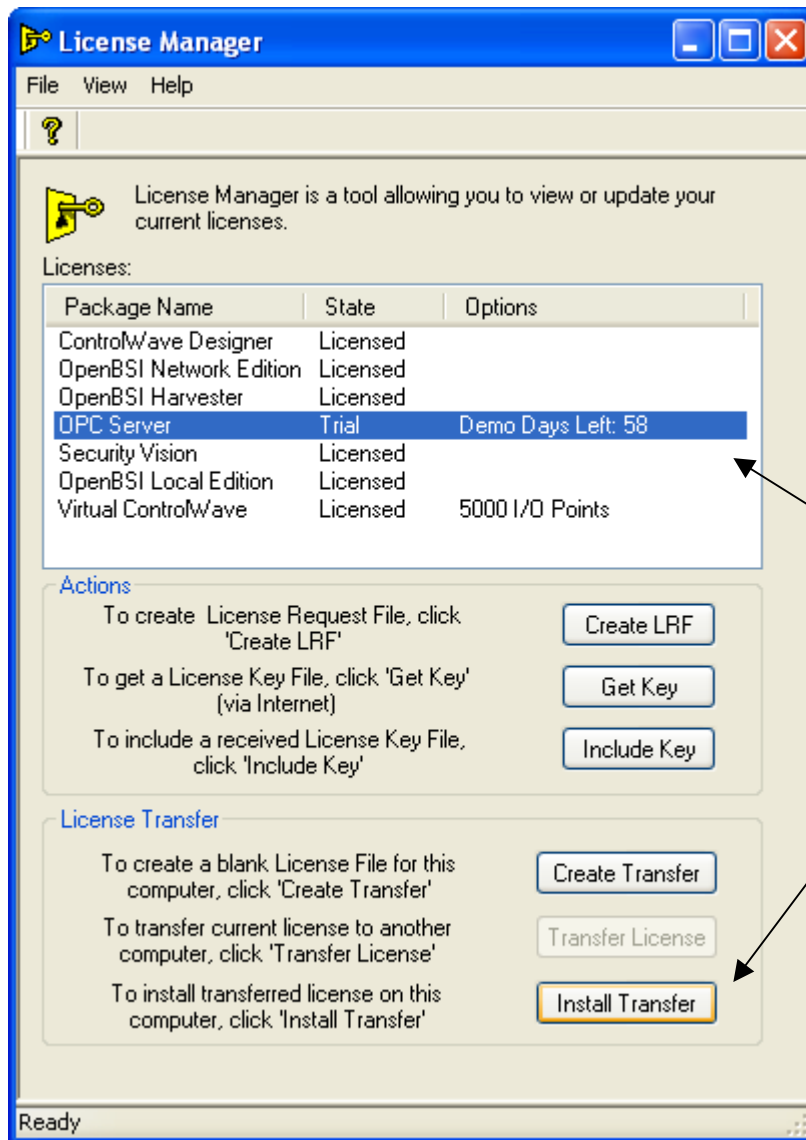


9. When the License Manager completes the update of the XFR file, click **OK**. You now have successfully removed the license from the source computer, and stored it in a file. Notice now that the State field in the License Manager on the source computer no longer shows “Licensed” for this software package.

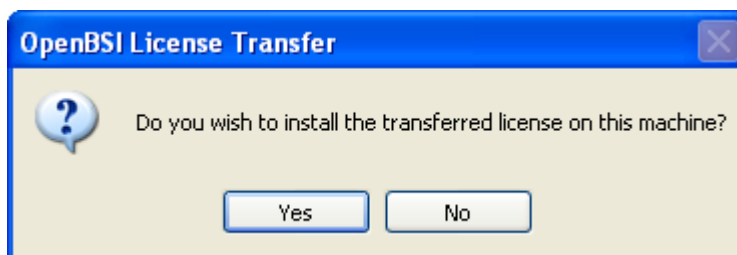
Click on **[OK]**



10. You can now copy the XFR file onto the destination computer. (You can transfer it via a USB thumb drive, e-mail, etc.)
11. Once you copy the XFR file to the destination computer, you can install, and complete the transfer. To do this, select the package which needs to be licensed, then click **Install Transfer**.



12. The License Manager prompts you to confirm you want to install the transferred license. Click **Yes**.



13. Specify the location of the updated XFR file on the destination computer and click **Open**. This completes the transfer.

**DISCLAIMER**

Bristol, Inc., Bristol Babcock Ltd, Bristol Canada, BBI SA de CV and the Flow Computer Division, are wholly owned subsidiaries of Emerson Electric Co. doing business as Remote Automation Solutions ("RAS"), a division of Emerson Process Management. ROC, FloBoss, ROCLINK, Bristol, Bristol Babcock, ControlWave, TeleFlow and Helicoid are trademarks of RAS. AMS, PlantWeb and the PlantWeb logo are marks of Emerson Electric Co. The Emerson logo is a trademark and service mark of the Emerson Electric Co. All other marks are property of their respective owners.

The contents of this publication are presented for informational purposes only. While every effort has been made to ensure informational accuracy, they are not to be construed as warranties or guarantees, express or implied, regarding the products or services described herein or their use or applicability. RAS reserves the right to modify or improve the designs or specifications of such products at any time without notice. All sales are governed by RAS' terms and conditions which are available upon request. RAS does not assume responsibility for the selection, use or maintenance of any product. Responsibility for proper selection, use and maintenance of any RAS product remains solely with the purchaser and end-user.

Engineered and supported by:

**Emerson Process Management,**

**Remote Automation Solutions,**

Blackpole Road, Worcester, WR3 8YB, UK

Registered office: Meridian East, Leicester, LE19 1UX

Registered in England and Wales, Registration No. 00671801

VAT Reg No. GB 705 353 652

**Worldwide Headquarters**  
1100 Buckingham Street  
Watertown, CT 06795 USA  
T +1 860.945.2200  
F +1 860.945.2213

**World Area Offices**  
Canada: T +1 905.362.0880  
Andean & Caribbean: T +58 261.300.8100  
Brazil: T +55 15.3238.3788  
Latin America (Southern Cone): T +54 11.4837.7000  
Mexico & Central America: T +52 55.5809.5300  
Asia Pacific: T +65 6777.8211  
Central & Eastern Europe: T +44 1751.471800  
Middle East & Africa: T +971 4.811.8100

