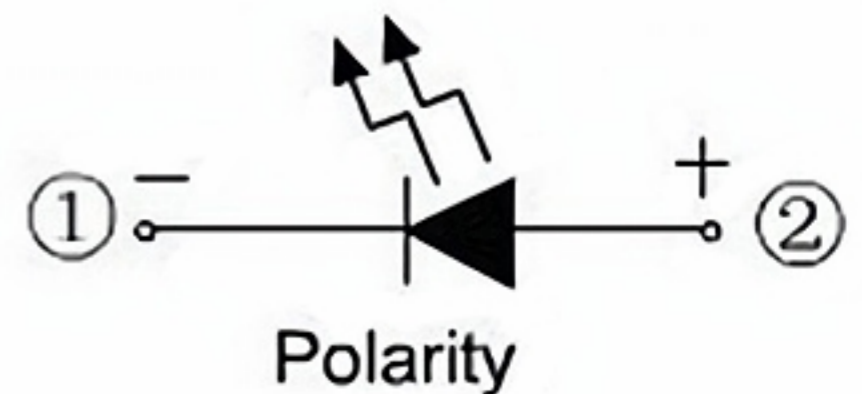
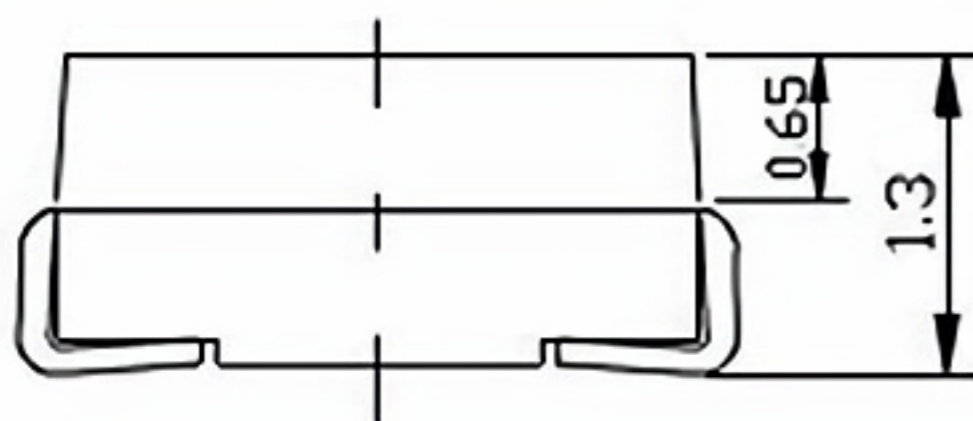
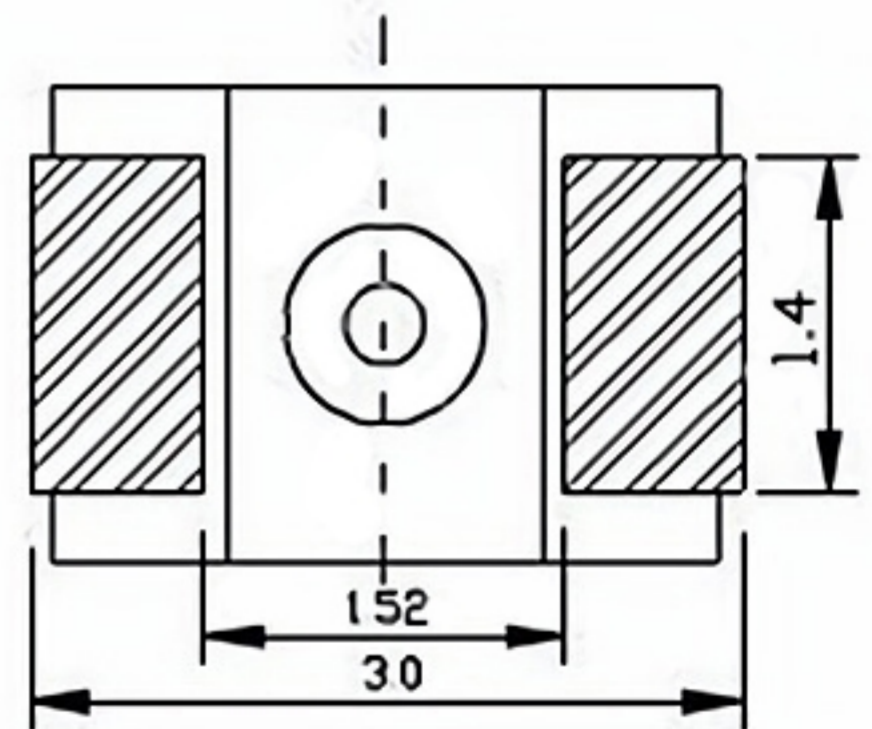
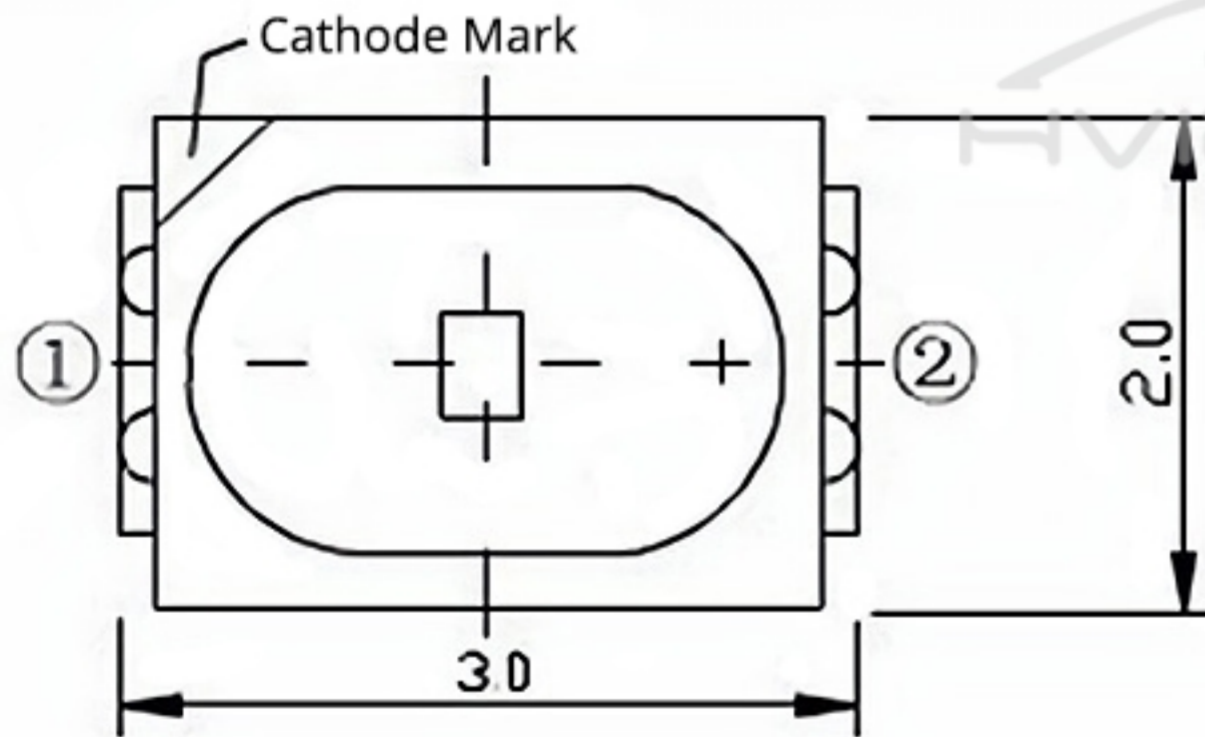


Product Manual

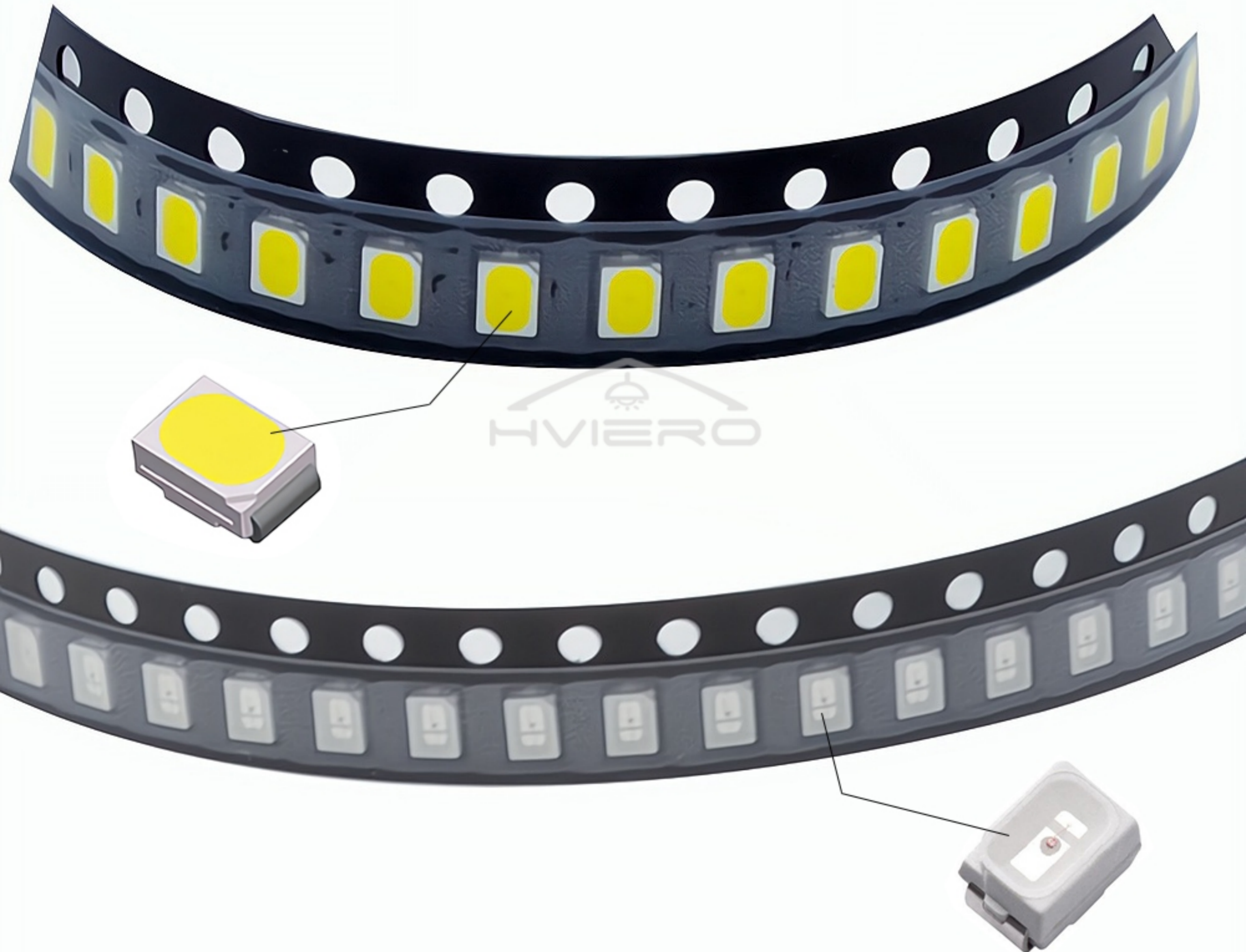


3020 SMD SMT Specification (one roll 3000pcs)

Colour	Voltage (v)	luminance (mcd)	Wave band (nm,k)
Blue	3.2~3.4	220~250mcd	460~465nm
Green	3.0~3.4	600~800mcd	517~520nm
Red	2.0~2.2	200~220mcd	620~625nm
White	3.0~3.2	7-8LM	6000~6500k
Yellow	2.0~2.2	600~800mcd	590~593nm



3020 Bright chips

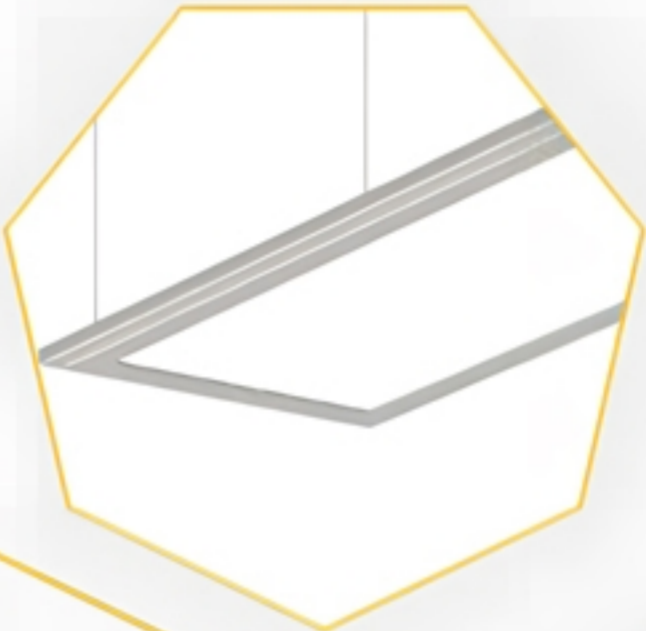


LAMP BEAD APPLICATION RANGE

TUBE LAMP



PANEL LAMP



DOWN LAMP



MINING LAMP



BULB LAMP



PAR LAMP





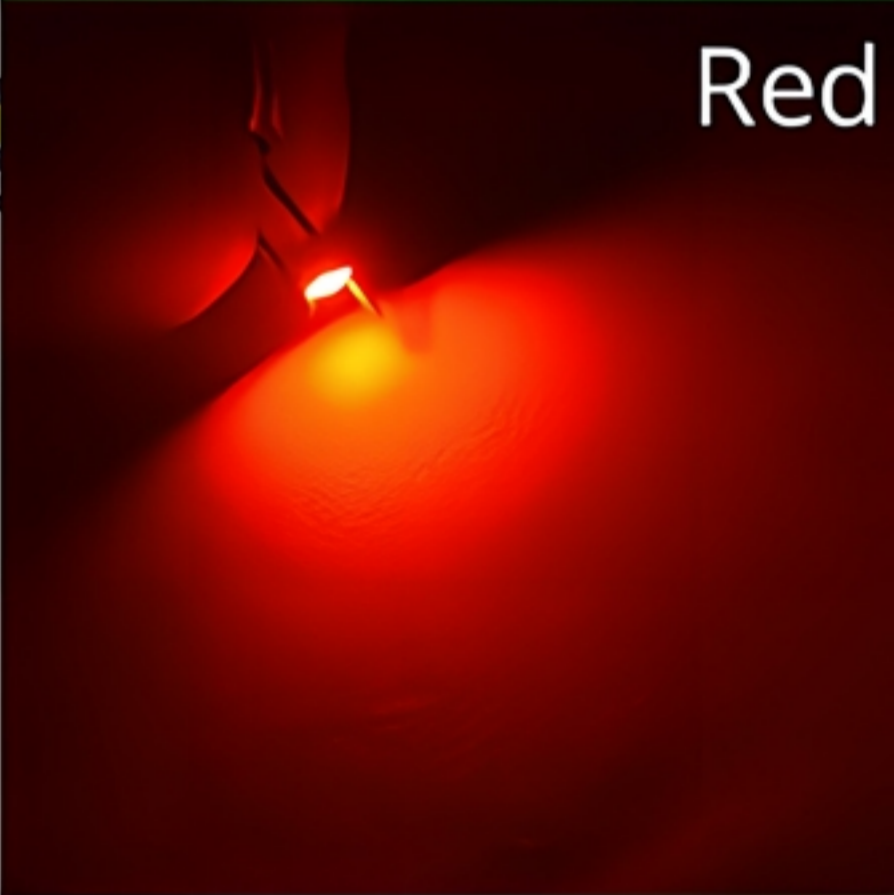
High brightness, large angle, low thermal resistance, ultra low light decay process, long life



Green



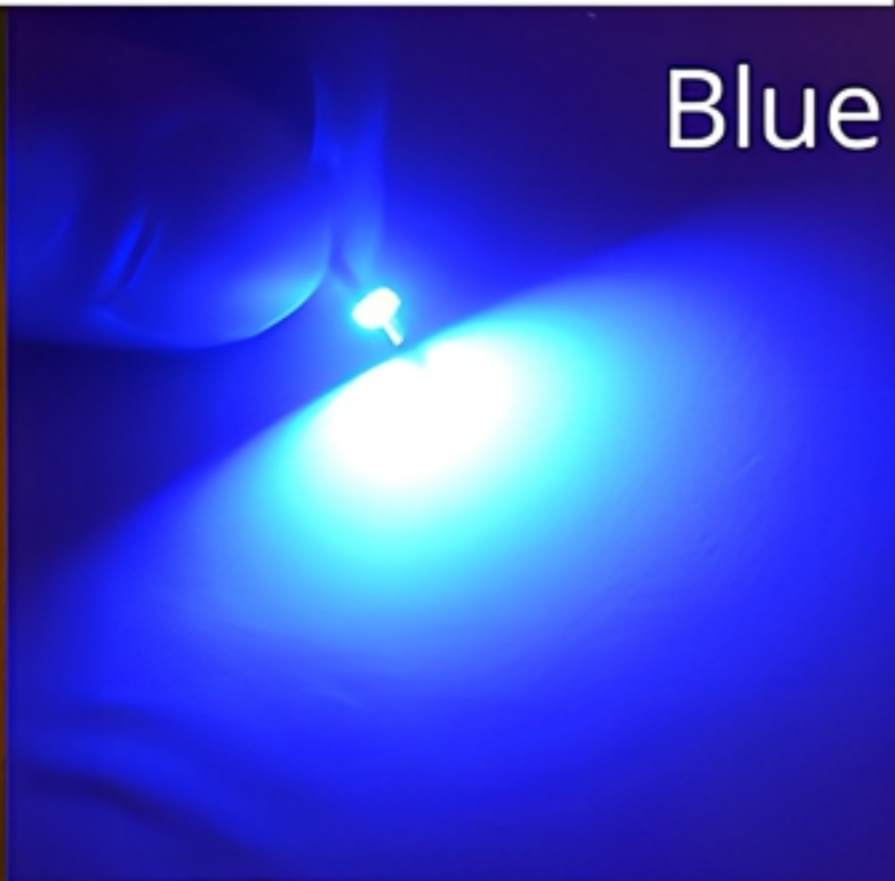
Red



Yellow



Blue



White



Product Parameters

Model	3020 SMD SMT
Lens Type	Water clear
SIZE	3.0 x 2.0 x 1.3 mm
Reverse Voltage	5.0 V
DC Forward Current	20mAh
Viewing Angle	100-130degree
Lead Soldering Temp	260 □□□C for 5 seconds
Light color	Blue/Green/Red/White/Yellow