

iBobbler™



Castable

Bluetooth

Fishfinder



OUTSMART THE FISH™





PRODUCT INFORMATION GUIDE

Welcome to your life with the iBobber™! This guide will show you how to use the iBobber to make fishing more fun than it's ever been.

Please read this guide completely before using iBobber, and retain this guide for future reference. Follow all instructions. For a downloadable pdf version of this guide, please go to ReelSonar.com. Additional questions should be submitted to info@reelsonar.com

INCLUDED IN PACKAGE

iBobber
USB Charger
Carry Pouch
iBobber App Redemption Instructions

If you have any questions, or any items are damaged or missing, please email info@reelsonar.com or call 844-iBOBBER.



TABLE OF CONTENTS

03	App Redemption
04	Charging the iBobber
06	Quick Overview
09	Settings
10	Personal
11	Syncing iBobber
14	Home
15	Sonar
17	Waterbed Mapping
18	Weather
19	Calendar
20	Trip Log / GPS Tag
22	Sonar Status Dashboard
23	Troubleshooting
25	Firmware Update
26	Warranty
27	Important Safety and Care Information
29	All Other Important Stuff



iBobber™ Fish Finder

APP REDEMPTION

iBobber syncs with iPhone 4S, 5 series, 6, iPad 3, Mini, and phones or tablets for Android™ (4.3 or later) that use Bluetooth Smart® (v4.0). The iBobber app syncs via Bluetooth Smart® (v4.0). Make sure your device uses Bluetooth Smart v4.0. Note: Android app does not have back buttons; use device built-in back button.

Pair your iBobber directly through our app. If Android smart device is still asking for a PIN, try a basic code like 0000 or 1111. If you continue to have issues contact Reelsonar at info@reelsonar.com or 1-844-iBOBBER.



INSTALLATION

From your Android or iOS device, go to the App store and search for iBobber or ReelSonar. Once you've found it, download and install the iBobber App.

Once installed, launch the app and sync the iBobber with your device directly through the app.



CHARGING THE IBOBBER (1 OF 2)

Before you first use the iBobber you'll need to charge it. It's very simple: after ensuring the iBobber is clean, just align the “bumps” on the white side of the iBobber (image 1) with the grooves in the charger cradle (image 2). Go to page 5.



Image 1

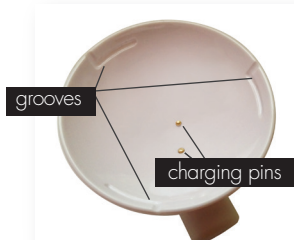


Image 2



iBobber™ Fish Finder

CHARGING THE IBOBBER (2 OF 2)

Gently push the bobber into the charger (image 3), gently twisting it clockwise so “bumps” slide horizontally through the grooves. Plug charging cable into a computer USB port, or using a USB adapter into a wall outlet and charging will be indicated by a solid blue ring of light around the iBobber (image 4). Light remains on until fully charged, then flashes indicating a full charge. Note: When fully charged, iBobber turns on once disconnected from the charger and remains on for up to 25 minutes. Please, check for firmware update through app (page 26) when initially charging the iBobber, and update if necessary. Once charged, do not leave iBobber in the charger as this slowly drains the battery.

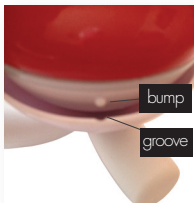


Image 3

- bumps enter grooves
- push down gently
- gently twist clockwise to lock
- unlock gently twist counter clockwise

blue light = charging

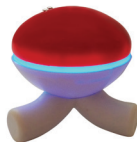


Image 4



IBOBBER APP DASHBOARDS / HOME DASHBOARD

HOME SCREEN

To get here, tap the house icon at the bottom of the screen.

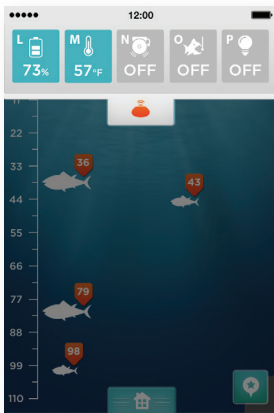


- A** - Active Indicator (current screen)
- B** - Sonar Screen Icon • Tap for Sonar
- C** - Sonar Status & iBobber Status / Orange means iBobber is active, Tap for iBobber status
- D** - Waterbed Mapping Icon Tap for Waterbed
- E** - Home Dashboard
- F** - Sonar Screen
- G** - Waterbed
- H** - Weather
- I** - Calendar
- J** - Settings
- K** - Trip Log



iBobber™ Fish Finder

QUICK OVERVIEW • IBOBBER APP DASHBOARDS / SONAR DASHBOARD



- L** - iBobber Battery
- M** - Water Temperature
- N** - Fish Alarm (off/on)
- O** - Strike Alarm (off/on/adjustable)
- P** - iBobber LED Beacon (off/on)



QUICK OVERVIEW • IBOBBER APP DASHBOARDS / SCREENS

ACCESS SETTINGS

To access registration, units of measurement, and other settings, click the “Settings” icon on the bottom left corner.

More on Home Screen and features to follow.



Image 5



iBobber™ Fish Finder

SETTINGS

This is the first screen of “Settings”, to register/change your info, select “Personal”.

Choose your measurement.

You also pair your iBobber through this screen (Bluetooth Smart sync), change settings like reel-in speed for waterbed mapping and demo mode (when you can’t wait to show your friends how cool it is), and turn on our Anti-Glare mode.

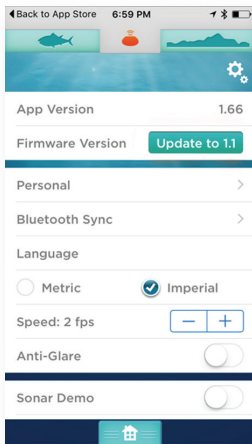


Image 6



PERSONAL

Tap the nickname field and a keyboard will open (image 7).

Enter a nickname for your iBobber, then touch email and enter your email address (image 8). *(We will not spam you or sell you out to the fish mob. That would be crappie of us.)* Tap “Favorite Fish” to select all your favorite fish (image 8). Tap Save and you’re done! Now tap

“Back” button. Android owners, you’ll use your device’s “back” button

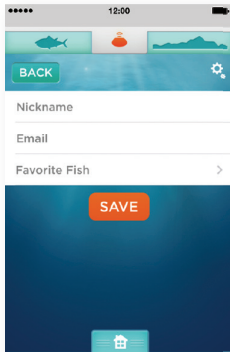


Image 7

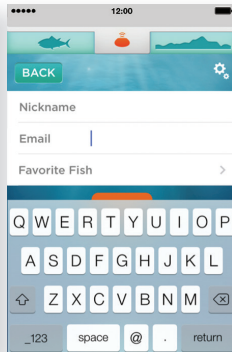


Image 8



SYNCING IBOBBER (1 OF 3)

Sync your iBobber with your device through the “Bluetooth Smart sync” option on your “Settings” screen. The iBobber turns on either when it’s in the water or unplug from the USB charger, so you’ll want to be prepared to fish when you sync it. Here’s what you’ll need to do when you’re ready to use the iBobber:

1) Attach the iBobber to your fishing line by attaching your line through the higher of the two attachment points. We suggest you use a swivel and make sure it’s locked so the iBobber doesn’t become separated from the line. It gets scared when it’s separated from you. Don’t scare iBobber.



Image 9

2) Place the iBobber into the water nearby. The water will activate it, turning it on. Don’t judge, we all have our “things”. You’re now ready to sync! Go to page 12.



SYNCING IBOBBER (2 OF 3)

3) Tap “Bluetooth Sync” (image 10).

4) The iBobber will appear on your device, listed by its nickname. Tap the circle next to your iBobber nickname (image 11). When the connection is made, the Sonar icon in the top navigation between the fish and waterbed silhouettes will turn orange (image 12). You’re now ready to find fish up to 100’ away. Note: Bluetooth ball continues to spin.



Image 10

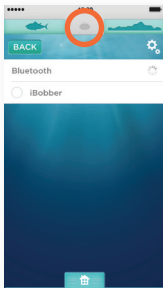


Image 11

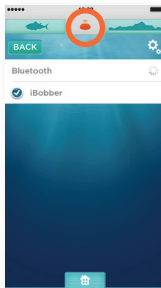


Image 12



iBobber™ Fish Finder

SYNCING IBOBBER (3 OF 3)

Note 1:

The first time you use the iBobber you'll pair the iBobber (nickname) with your phone. If you and a bunch of friends are syncing for the first time, you'll need to do it separately — cast yours into the water, sync, then your pal casts theirs, syncs, then another friend can cast, etc.

After your first sync, your iBobber/app remembers your nickname so using the iBobbers together is not an issue.

Note 2:

While your phone will remember your iBobber, and your friends phone will remember his iBobber, if you're out and forget your phone, or vice versa, you can connect with your friends iBobber, or theirs with yours. However, when connected to theirs, you won't be able to connect with your own at the same time, etc. One iBobber to one device at a time. What can we say? We're old fashioned that way.

Note 3:

When fully charged, the iBobber turns on when first disconnected from the charger and remains on for 25 minutes. This is for when you need need to update the firmware (page 25)



HOME

This is your control center.

Open it by tapping Home icon (little house).

Tap again and the home screen will close.

From here you'll access:
Sonar, Weather, Settings, Waterbed
Mapping, Calendar, Trip Log.



Image 13



iBobber™ Fish Finder

SONAR

Tap the Sonar icon to get to the Sonar screen. Fish are tagged with their depth and size. Orange tag is a fish under 15". Light green tag is a fish over 15". A depth gauge is on the left. The bottom of the screen reflects the waterbed contour. (Enter) To use the Raw Sonar Mode (image 14), just tap the fish icon at the top of the app screen; do the same to get it back to standard Fish Sonar Mode (image 15).

Note: Sonar mode is indicated by the dark green fish in the top left navigation, with an arrow indicating it.

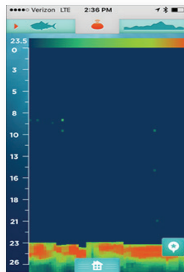


Image 14

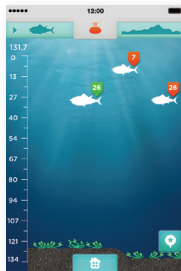


Image 15



WATERBED MAPPING (10F 2)

Tap either Waterbed Mapping Icon on the Home Screen or if you're on the Sonar Screen, tap the Waterbed silhouette (right/top navigation).

Note: when you're in Waterbed Mapping a green arrow points to the Waterbed Silhouette (image 16) ... tap Ok.

Once in Waterbed Mapping, the CAST iBOBBER screen appears (image 15) and you'll cast the iBobber up to 100' away. When you're ready to map the waterbed contour between the iBobber and you, tap OK (image 15). A count to three appears (image 17) to finalize preparation. Go to page 17.



Image 16

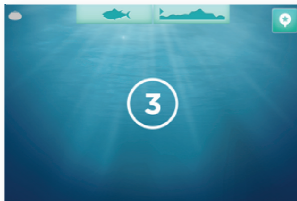


Image 17



iBobber™ Fish Finder



WATERBED MAPPING (2 OF 2)

Once the count ends, the screen changes to REEL IN iBOBBER. Reel in the iBobber, approximately 2ft/sec., slow and steady — you're now mapping the waterbed contour. When you're done, tap OK (image 18).

A map of the waterbed contour will now appear with a depth gauge on the left, and a distance measurement along the bottom (image 19).

Note: GPS Tag button in the upper right. Tap to log your GPS position, and send it to the trip log.



Image 18

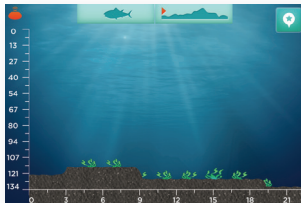


Image 19



WEATHER

Tap either the weather icon on the Home Screen, or from Waterbed Mapping tap the Sonar icon (green fish / top navigation) then tap Home (little house), then tap Weather icon.

You'll see the Weather — Current Temperature, Daily High/Low, Precipitation %, Wind Speed/Direction, Barometric Pressure.

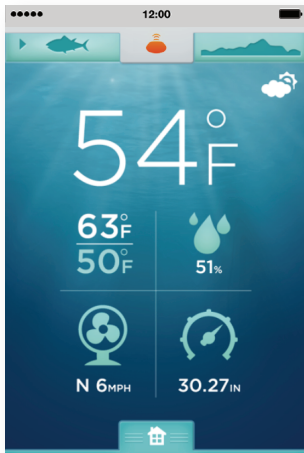


Image 20



iBobber™ Fish Finder

CALENDAR



Tap either Calendar Icon on the Home Screen, or from Waterbed Mapping tap Sonar (green fish).

Then tap Home icon, then tap Weather icon

You'll see the Calendar and Moon phases by month (image 21).

Tap today's date to see Moon Rise, Moon Set and Sun Rise and Sunset (image 22).
(Tap past date to see past Trip Logs)



Image 21

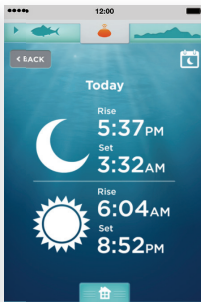


Image 22



TRIP LOG / GPS TAG (1 OF 2)



Tap either the Trip Log icon on the Home Screen, or from Waterbed Mapping tap Sonar (green fish). Then tap Home icon, then tap the Trip Log icon. You'll see the Trip Log (image 23). If you've tapped a GPS Tag on any screen, Date, Time, and Location will have auto-filled (image 24). If not, to Log a location/trip, tap the GPS pin icon on the bottom right of the screen (image 23). Now, touch the Title field and a keyboard will open. Enter the title of your adventure and the rest of the fields, tapping one at a time to enter info you wish to save (images 24-25, and 26-27 on next page). Tap Done when finished. Go to page 21.

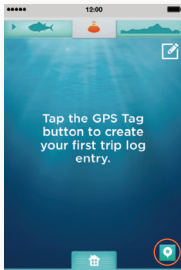


Image 23

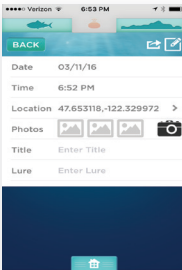


Image 24

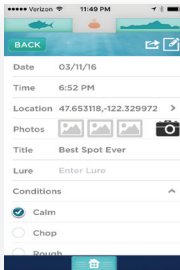


Image 25



iBobber™ Fish Finder

TRIP LOG / GPS TAG (2 OF 2)



To share via text, email, Twitter or Facebook (image 28), just tap the Share Arrow next to the trip log icon to share. Tap the photo icon to capture pictures. Note: Tap Location to open the map detail associated with your GPS Tag.

To share your photos on Instagram, Facebook, or Twitter tap the picture you want to share and then tap the share arrow.

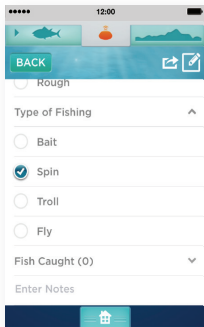


Image 26

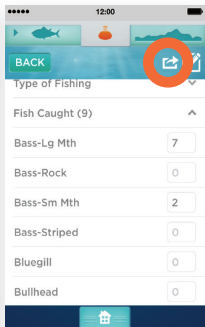


Image 27

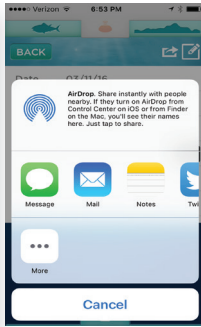


Image 28



SONAR STATUS DASHBOARD

The Sonar status icon doubles as the access for the iBobber features. Tap the Sonar icon and the dashboard opens to reveal (from L to R) iBobber Battery Indicator, Water Temperature, Sonar Fish Alarm (tap to turn on/off), Strike Alarm (tap to turn on/off. Double tap to adjust sensitivity), and iBobber beacon (tap to turn on/off). Tap the Sonar icon again to close dashboard.

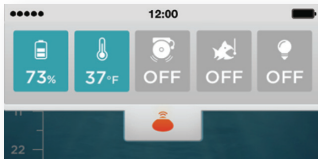


Image 29

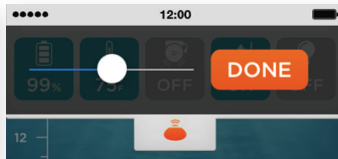


Image 30



iBobber™ Fish Finder

TROUBLESHOOTING (1 OF 2)

Q-1: Trouble Syncing to iBobber?

A-1: First, the iBobber may simply be powered off. It automatically powers on when it connects with water.

Note: When fully charged, the iBobber turns on when disconnected from the charger and remains on for 25 minutes. This is for when you need need to update firmware (page 25).

Cast the iBobber into the water you're fishing, or place it in any other water (glass, sink, bathtub) and the iBobber sync should be visible in Settings > Bluetooth Sync >.

A-2: The battery in the iBobber may be low. Recharge the iBobber in the USB charger. Wait until the iBobber is charged and you can return to syncing it with your device.

A-3: The iBobber may not sync with your mobile device or tablet because of a Bluetooth issue with your device. Completely shut off and restart your device. This will clear the Bluetooth cache and should allow iBobber to connect. You may need to do this a few times. Does your device have correct version of Bluetooth?

A-4: The iBobber may be too far from your mobile device (more than 100'), waves might be periodically blocking the Bluetooth signal, or there may be obstructions in the way of the signal. Try reducing the distance or remove the obstructions and you should be able to sync.



TROUBLESHOOTING (2 OF 2)

Q-2: Intermittent sonar view?

A-1: You may be reeling in the iBobber at too great a speed, causing it to “jump” on top of the water. Slow down the reeling of the iBobber. 2 fps (feet per second) is recommended.

A-2: The iBobber may be too far from your mobile device (more than 100'), waves might be periodically blocking the Bluetooth Smart signal, or there may be obstructions to the signal. Try reducing the distance or remove the obstructions and then sync it with your device.

Q-3: Error message accessing Calendar or Weather - Turn on your device's Location Service to allow the app to determine your location.

A: The app requires a connection to the internet to fully operate. In your mobile device settings, enable location services for the iBobber as well as cellular service. If this is not a solution, you may no longer be in the coverage zone of these services. Return to the coverage zone and try again. If problem persists, please contact info@reelsonar.com.

Q: The Map is blank, displaying only my current and saved locations.

A: Please refer to the answer for Q-3.

Q: Not able to Share from the Trip Log.

A: Please refer to the answer for Q-3.



iBobber™ Fish Finder

FIRMWARE UPDATE

Firmware updates provide improved performance for the iBobber. Here's how to update the firmware in the iBobber:

- 1) Make sure you have the latest version of the iBobber App and that the iBobber is fully charged. You may check which version you have by going to the "Settings" page again; it will be at the top of the page.
- 2) Firmware updates require an internet connection; make sure you have an active internet connection, either Wi-Fi or 3G/4G.
- 3) Wet the iBobber by placing it in the bowl of water and open Settings in the app. Tap Bluetooth Sync. Tap the Back button. If there's a green icon next to Firmware Update it means that a firmwareupdate is available. To update tap the icon. The firmware update should begin automatically. Please follow instructions on the screen. The update should take less than 10 minutes for Apple and most Android devices, however some Android devices will take as much as 20 minutes. Once completed you will see a brief flash of green light (means the iBobber rebooted itself) and the iBobber is ready to find fish. If after the update you still see the "Update to" icon, it means the install did not happen. Please make sure the iBobber is still synced to the smart device and try the update again. If you have any questions or issues please contact us at 844-IBOBBER or info@reelsonar.com



1-YEAR LIMITED WARRANTY

This iBobber, as supplied and distributed by ReelSonar, Inc., and delivered new, in the original carton to the original customer purchaser, is warranted by ReelSonar, Inc. against manufacturing defects in materials and workmanship for a period of 1 year. ReelSonar, Inc. will repair or replace this product, at our option and at no charge with new or reconditioned parts, if found to be defective during the limited warranty period specified above.

In the case of a manufacture or workmanship defect, please contact us at ReelSonar.com. If found to be a manufacture or workmanship defect you will be issued a Return Authorization (RA) number, and instructions for shipping. We do not accept returns without the RA number. Purchaser is responsible for shipping to us. We will pay for the shipping to you.



iBobber™ Fish Finder

IMPORTANT SAFETY AND CARE (1 OF 2)

After use, wipe the iBobber and USB Charger with a clean, dry cloth and store dry in the pouch provided. The iBobber's brass pins on the bottom must be rinsed with fresh water after exposure to salt water to prevent corrosion. Do not place the iBobber in a wet area or on a metal surface when not in use they will activate the iBobber. The iBobber could be activated without your knowledge, draining the battery.

Keep the iBobber within acceptable temperatures. Operate and store where the temperature is 0°F and 125°F. Keep away from heat and flame sources such as heaters, stoves, radiators and other sources that generated heat or flames. Do not store the iBobber in temperatures above 125°F.

iBobber should never be used as a navigational aid to prevent boat or water craft damage, grounding, or personal injury. Use as a navigational aid will void the warranty.

To reduce the risk of damage or injury, and to keep warranty compliant, do not open the iBobber or the USB Charger. Never service the iBobber yourself.



IMPORTANT SAFETY AND CARE (2 OF 2)

- **Never abuse, puncture, or step on the iBobber. This can damage the exterior shell, compromise the waterproofness, render it inoperable, and void the warranty.**
- Never place anything but the iBobber in the USB charger. Placing coins or metal into the charger could cause those objects to heat and burn on contact with skin.
- Never cast iBobber in dangerous or hazardous areas, or areas where fishing is not permitted. Never cast iBobber into rocks.
- Never use iBobber if the exterior shell has been compromised. Contact us at info@reelsonar.com.
- Always try to keep iBobber in sight when it's on the water. At night, use the built-in beacon to track the iBobber location.
- Periodically examine iBobber for potential hazards such as a cracked or damaged exterior shell.



iBobber™ Fish Finder

BATTERY WARNING

The iBobber contains a sealed, rechargeable Lithium Polymer battery. Lithium Polymer batteries are extremely hazardous and liable to cause serious injuries to persons or property. The user accepts liability for the use of a Lithium Polymer battery. As the manufacturer and the distributor cannot ensure the battery is used correctly (charging, discharging, storage, etc.), they cannot be held liable for damages caused to persons or property. In the event of battery leakage, avoid the liquid coming into contact with skin and eyes. In case of contact with the skin, wash copiously with soap and water. In case of contact with the eyes, rinse copiously with cold water and consult a doctor. If you notice a suspicious smell or noise or observe smoke around the iBobber or USB Charger, disconnect them immediately. Never clean the iBobber charging pins with a solvent, denatured alcohol, or other flammable solvents. Non-compliance with the instructions could result in gas being given off, fire, electric shock or an explosion.

BATTERY • iBOBBER DISPOSAL

Discarding iBobber and its batteries in your general household waste can be harmful to the environment. Damaged or unusable iBobbers must be disposed of in a container specially reserved for this purpose. When disposing of the iBobber/battery, follow appropriate local guidelines and regulations. For further information contact your local solid waste authority.



SOFTWARE LICENSE

Use of iBobber is subject to the ReelSonar Software License Agreement found at: ReelSonar.com.

EXCLUSIONS AND LIMITATIONS (1OF 2)

THIS WARRANTY COVERS THE NORMAL AND INTENDED USE OF IBOBBER. IT APPLIES ONLY TO THE HARDWARE PRODUCT "IBOBBER" MANUFACTURED BY OR FOR REELSONAR, INC. THAT CAN BE IDENTIFIED BY THE "REELSONAR" TRADEMARK, TRADE NAME OR LOGO AFFIXED TO IT. THE LIMITED WARRANTY DOES NOT APPLY TO ANY NON-REELSONAR HARDWARE PRODUCT OR ANY SOFTWARE, EVEN IF PACKAGED OR SOLD WITH THE IBOBBER HARDWARE PRODUCT. REFER TO THE SOFTWARE LICENSE AGREEMENT ACCOMPANYING THE SOFTWARE FOR DETAILS OF YOUR RIGHTS WITH RESPECT TO ITS USE. REELSONAR, INC. DOES NOT WARRANT THAT THE OPERATION OF IBOBBER WILL BE UNINTERRUPTED OR ERROR-FREE. REELSONAR IS NOT RESPONSIBLE FOR DAMAGE ARISING FROM FAILURE TO FOLLOW INSTRUCTIONS RELATING TO IBOBBER'S USE. THIS WARRANTY DOES NOT APPLY TO:

A) consumable parts, such as batteries, or protective coatings designed to diminish over time unless failure has occurred due to a defect in materials or workmanship; (b) damage caused by use with non-iBobber products; (c) damage caused by accidents, misuse, abuse, neglect, misapplication, fire; lightning or other acts of nature; incorrect electrical line voltage, fluctuations or surges; damage caused by improper installation; product alteration or modification; improper or unauthorized repair; exterior finish or cosmetic damage; (d) damage caused by operating iBobber outside the intended uses described by ReelSonar.com; (~defects caused by normal wear and tear or otherwise due to the normal aging of the iBobber product.



EXCLUSIONS AND LIMITATIONS (2 OF 2)

THERE ARE NO EXPRESS WARRANTIES OTHER THAN THOSE LISTED AND DESCRIBED ABOVE, AND NO WARRANTIES WHETHER EXPRESS OR IMPLIED, INCLUDING, BUT NOT LIMITED TO, ANY IMPLIED WARRANTIES OF MERCHANTABILITY OR FITNESS FOR A PARTICULAR PURPOSE AND WARRANTIES AGAINST HIDDEN OR LATENT DEFECTS, SHALL APPLY AFTER THE EXPRESS WARRANTY PERIOD STATED ABOVE, AND NO OTHER EXPRESS WARRANTY OR GUARANTEE GIVEN BY ANY PERSON, FIRM OR CORPORATION WITH RESPECT TO THIS PRODUCT SHALL BE BINDING ON REELSONAR, INC. EXCEPT AS PROVIDED IN THIS WARRANTY AND TO THE MAXIMUM EXTENT PERMITTED BY LAW, REELSONAR, INC. IS NOT RESPONSIBLE FOR LOSS OF REVENUE OR PROFITS, FAILURE TO REALIZE SAVINGS OR OTHER BENEFITS, LOSS OF OPPORTUNITY, LOSS OF GOODWILL, LOSS OF REPUTATION, LOSS OF, DAMAGE TO, COMPROMISE OR CORRUPTION OF DATA, OR ANY OTHER SPECIAL, INCIDENTAL OR CONSEQUENTIAL DAMAGES CAUSED BY THE USE, MISUSE OR INABILITY TO USE THIS PRODUCT, OR ANY BREACH OF ANY WARRANTY OR CONDITION REGARDLESS OF THE LEGAL THEORY ON WHICH THE CLAIM IS BASED, AND EVEN IF REELSONAR, INC. HAS BEEN ADVISED OF THE POSSIBILITY OF SUCH DAMAGES. NOR SHALL RECOVERY OF ANY KIND AGAINST REELSONAR, INC. BE GREATER IN AMOUNT THAN THE PURCHASE PRICE OF iBOBBER. WITHOUT LIMITING THE FOREGOING, PURCHASER ASSUMES ALL RISK AND LIABILITY FOR LOSS, DAMAGE OR INJURY TO PURCHASER AND PURCHASER'S PROPERTY AND TO OTHERS AND THEIR PROPERTY ARISING OUT OF THE USE, MISUSE OR INABILITY TO USE THIS PRODUCT SOLD BY REELSONAR, INC. NOT CAUSED DIRECTLY BY THE GROSS NEGLIGENCE OF REELSONAR, INC. THIS LIMITED WARRANTY IS NONTRANSFERABLE AND STATES YOUR EXCLUSIVE REMEDY.

Some states do not allow limitations on how long an implied warranty lasts, or the exclusion or limitation of incidental or consequential damages, so the above limitations or exclusions may not apply to you. This warranty gives you specific legal rights and you may also have other rights, which vary from state to state.



GOVERNING LAW AND ARBITRATION

This Limited Warranty shall be governed by the laws of the State of Washington without giving effect to any conflict of laws or principles that may provide the application of the law of another jurisdiction. Any claim or dispute in connection with this Limited Warranty shall be resolved in a cost-effective manner through binding non-appearance-based arbitration. The arbitration shall be initiated through an established alternative dispute resolution provider mutually agreed upon by the parties. The alternative dispute resolution provider and the parties must comply with the following rules;

a) the arbitration shall be conducted by telephone, or web and/or be solely based on written submissions, and the specific manner shall be chosen by the party initiating the arbitration; b) the arbitration shall not involve any personal appearance by the parties or witnesses unless otherwise mutually agreed by the parties; and c) any judgment on the award rendered by the arbitrator may be entered in any court of competent jurisdiction. If the foregoing arbitration clause does not apply for any reason, the individual product owner agree to submit to the personal jurisdiction of the state courts located within King County, Washington and the federal courts in Seattle, Washington for the purpose of litigating all such claims or disputes, over which these courts shall have exclusive jurisdiction of such claims or disputes.

Notwithstanding the foregoing, ReelSonar, Inc. may seek injunctive or other equitable relief to protect its intellectual property rights in any court of competent jurisdiction.



CHANGES TO THIS PRODUCT INFORMATION GUIDE

The explanations and specifications in this guide are given for information only and may be modified at any time without prior notice. The latest version of this guide will be available from our website at ReelSonar.com. The explanations and specifications contained in this guide are correct at the time of printing. ReelSonar, Inc. reserves the right to amend or improve the product design or user guide without any restrictions and without any obligation to notify users as part of our ongoing effort to upgrade and improve our products. the product that you have purchased may therefore differ slightly from the model described in this guide.



END OF LIFE PRODUCT DISPOSAL

At end of life of iBobber and USB Charger, please do not dispose of these products in your general household waste. Instead, in order to prevent possible harm to the environment or human health from uncontrolled waste disposal, please dispose of this product separately in accordance with your local laws and regulation. For more information on the separate collection systems for waste electrical and electronic equipment that are available for consumers, near your home, free of charge, please contact your local municipality authority. You can also contact the retailer from which you purchased your iBobber - they might have put in place recycling services or they may be part of a specific recycling program.

This device complies with Industry Canada licence-exempt RSS standard(s). Operation is subject to the following two conditions: (1) this device may not cause interference, and (2) this device must accept any interference, including interference that may cause undesired operation of the device.

Le présent appareil est conforme aux CNR d'Industrie Canada applicables aux appareils radio exempts de licence. L'exploitation est autorisée aux deux conditions suivantes : (1) l'appareil ne doit pas produire de brouillage, et (2) l'utilisateur de l'appareil doit accepter tout brouillage radioélectrique subi, même si le brouillage est susceptible d'en compromettre le fonctionnement.

PACKAGING

Please separate paper from plastic for recycling

PAPER RECYCLING



ONLY

BOBBER & USB CHARGE

Please separate plastic from paper for recycling





iBobber™ Fish Finder

FCC WARNINGS

Changes or modifications not expressly approved by the party responsible for compliance could void the user's authority to operate the equipment. This equipment has been tested and found to comply with the limits for a Class B digital device, pursuant to Part 15 of the FCC Rules. These limits are designed to provide reasonable protection against harmful interference in a residential installation. This equipment generates uses and can radiate radio frequency energy and, if not installed and used in accordance with the instructions, may cause harmful interference to radio communications. However, there is no guarantee that interference will not occur in a particular installation. If this equipment does cause harmful interference to radio or television reception, which can be determined by turning the equipment off and on, the user is encouraged to try to correct the interference by one or more of the following measures:

- Reorient or relocate the receiving antenna.
- Increase the separation between the equipment and receiver.
- Connect the equipment into an outlet on a circuit different from that to which the receiver is connected.

FCC RADIATION EXPOSURE STATEMENT

The antennas used for this transmitter must be installed to provide a separation distance of at least 20 cm from all persons and must be co-located for operating in conjunction with any other antenna or - Consult the dealer or an experienced radio/TV technician for help.

CANADA

This device complies with Industry Canada licence-exempt RSS standard(s). Operation is subject to the following two conditions: (1) this device may not cause interference, and (2) this device must accept any interference, including interference that may cause undesired operation of the device.

Le présent appareil est conforme aux CNR d'Industrie Canada applicables aux appareils radio exempts de licence. L'exploitation est autorisée aux deux conditions suivantes : (1) l'appareil ne doit pas produire de brouillage, et (2) l'utilisateur de l'appareil doit accepter tout brouillage radioélectrique subi, même si le brouillage est susceptible d'en compromettre le fonctionnement.



"Syncs with iPhone," and "Syncs with iPad" means that iBobber and the iBobber app have been designed to connect specifically to iPhone, or iPad, respectively, and has been certified by the developer to meet Apple performance standards. Apple is not responsible for the operation of this device or its compliance with safety and regulatory standards. Please note that the use of this accessory with iPhone, or iPad may affect wireless performance. iPad, and iPhone are trademarks of Apple Inc., registered in the U.S. and other countries.



Android™ is a trademark of Google Inc. Use of this trademark is subject to GooglePermissions. Not all devices compatible. Check at ReelSonar.com.



The Bluetooth word mark and logos are owned by the Bluetooth SIG, Inc. and any use of such marks by ReelSonar, Inc. is underlicense.

SOFTWARE

Your ReelSonar, Inc. product can connect with special ReelSonar copyrighted software to control its operation. Parts of this software may contain copyrighted elements that are licensed under the GPL, MIT, and Creative Common licenses among others. Additionally, your ReelSonar, Inc. product contains proprietary firmware developed and copyrighted by ReelSonar, Inc. Any attempts to illegally copy or redistribute will be prosecuted.

COPYRIGHT

Copyright© 2016 ReelSonar, Inc. All Rights Reserved. Patents Pending.



iBobber™



iBobber™ is a trademark of ReelSonar, Inc.

©2016 ReelSonar, Inc. Seattle, WA
All rights reserved. Patents Pending

Customer Support • ReelSonar.com • 1-844-iBobber (toll-free)

Designed, refined, and engineered by ReelSonar in Seattle.
Custom built in China.

“Syncs with iPhone” and “Syncs with iPad” means that iBobber and the iBobber app have been designed to connect specifically to iPhone, or iPad, respectively, and has been certified by the developer to meet Apple performance standards. Apple is not responsible for the operation of this device or its compliance with safety and regulatory standards. Please note that the use of this accessory with iPhone, or iPad may affect wireless performance. iPad and iPhone are trademarks of Apple Inc., registered in the U.S. and other countries. The Bluetooth word mark and logos are owned by the Bluetooth SIG, Inc. and any use of such marks by ReelSonar, Inc. is under license. Android™ is a trademark of Google Inc. Use of this trademark is subject to Google Permissions. Not all devices compatible. Check www.ReelSonar.com.



IC: 11845A-IBOBBER
FCC ID: SGG-IBOBBER



6 99723 02101 2