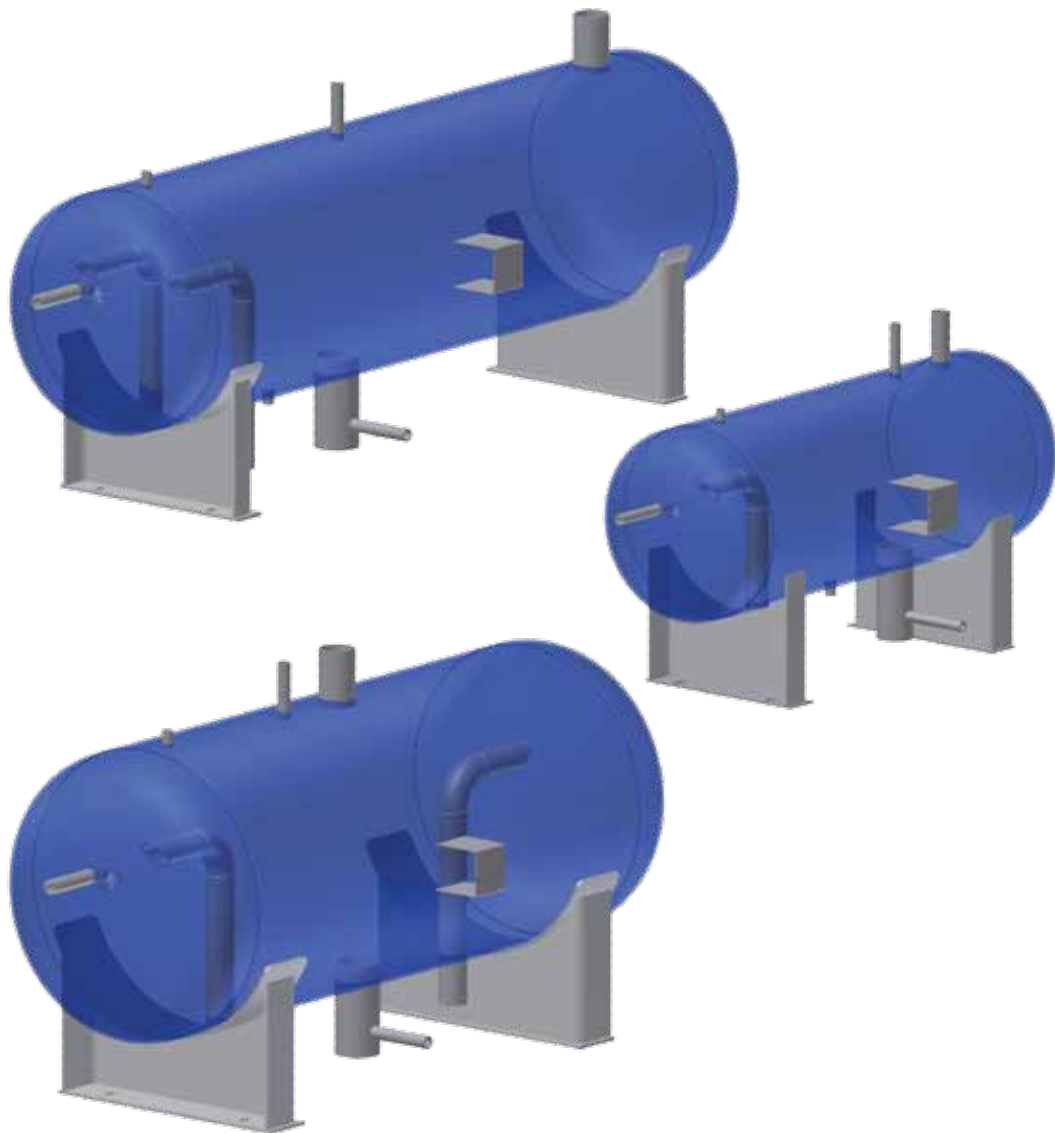
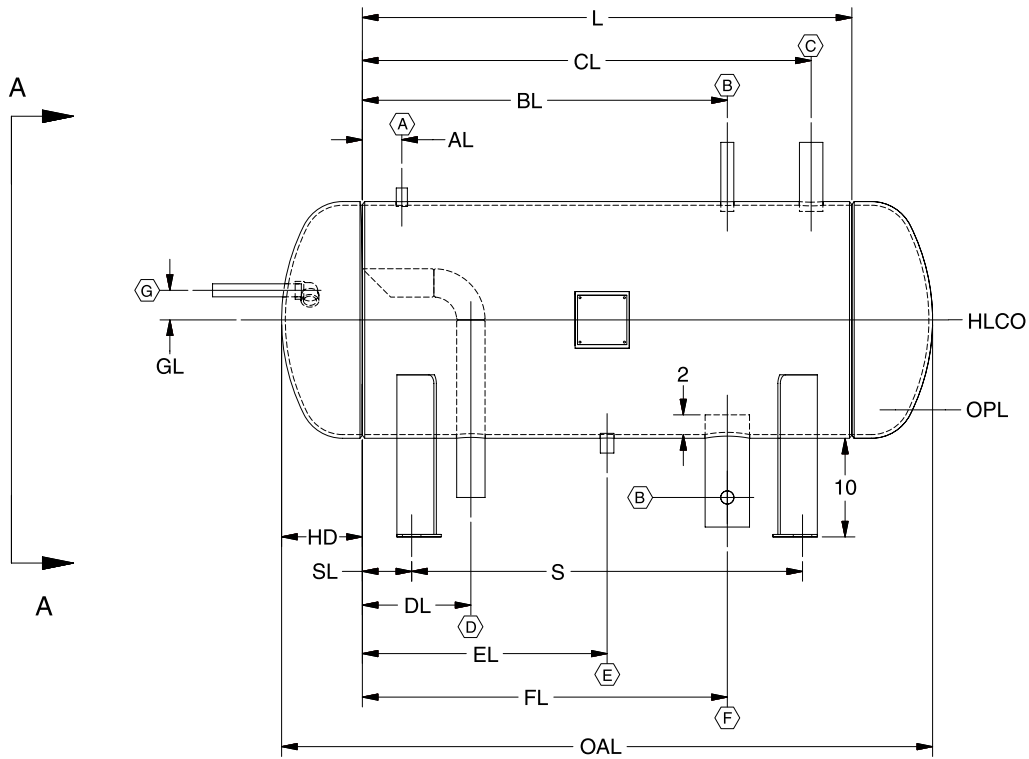


AcuAir HORIZONTAL SURGE DRUM

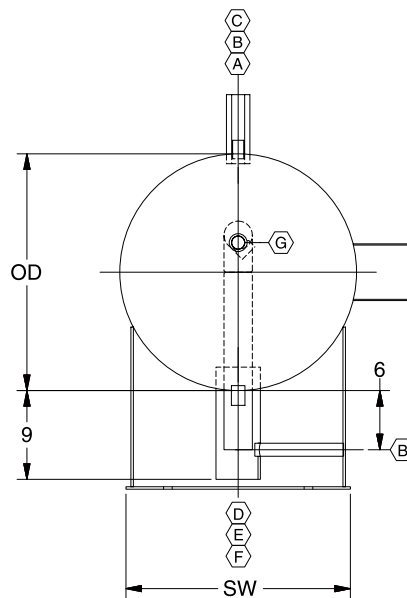




MODELS
AA-10
AA-15
AA-20

Key to Nozzle/Coupling Locations:

- A - Relief (Coupling)
- B - Level Column
- C - Gas Outlet
- D - Wet Return
- E - Drain (Coupling)
- F - Liquid Outlet
- G - Liquid Makeup
- OD - Outside Diameter
- HD - Head Depth
- L - Shell Length
- OAL - Overall Length
- OPL - Operating Level
- HLCO - High Level Cutout
- S - Saddle Separation
- SL - Left Saddle
- SW - Saddle Width



VIEW A-A

NOTES:

1. All dimensions and nozzle nominal pipe sizes are given in inches unless noted otherwise.
2. Operating charge at OPL is based on ammonia @ +30°F RT.
3. Nozzle connections are supplied as pipe stubs unless otherwise specified as a coupling (Cplg).
4. Couplings are ASME B16.11 Class 3000 "full" couplings.
5. Nozzles are sized for R-717 and should not be used with other refrigerants (e.g. R-507).
6. Nameplate bracket is approximately 6 inches deep to allow for insulation.
7. All dimensions are subject to change; please consult factory for certified drawings.
8. Vessels are built in accordance with ASME Boiler & Pressure Vessel Code, Section VIII, Division 1.

Figure 1. Data and Dimensions

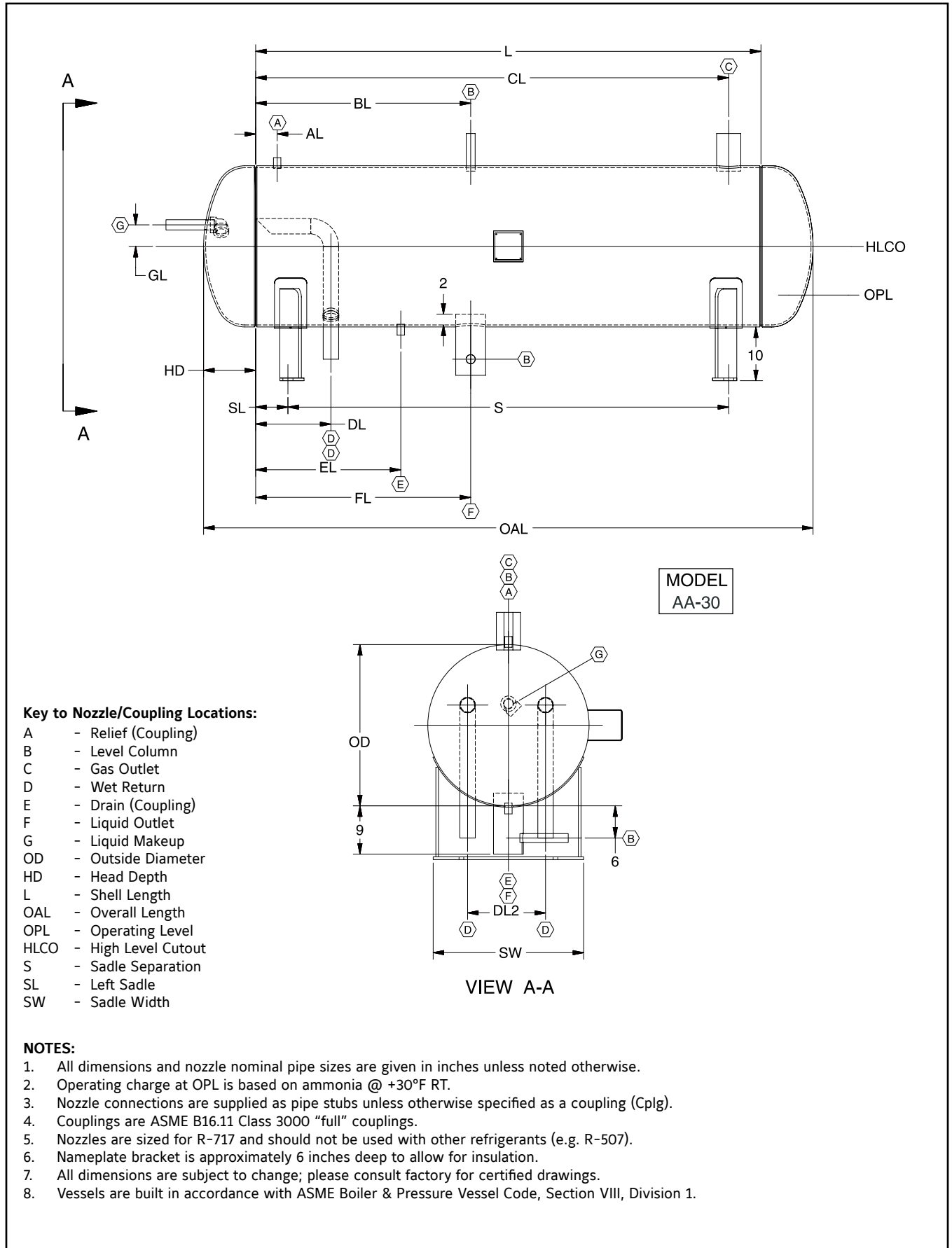
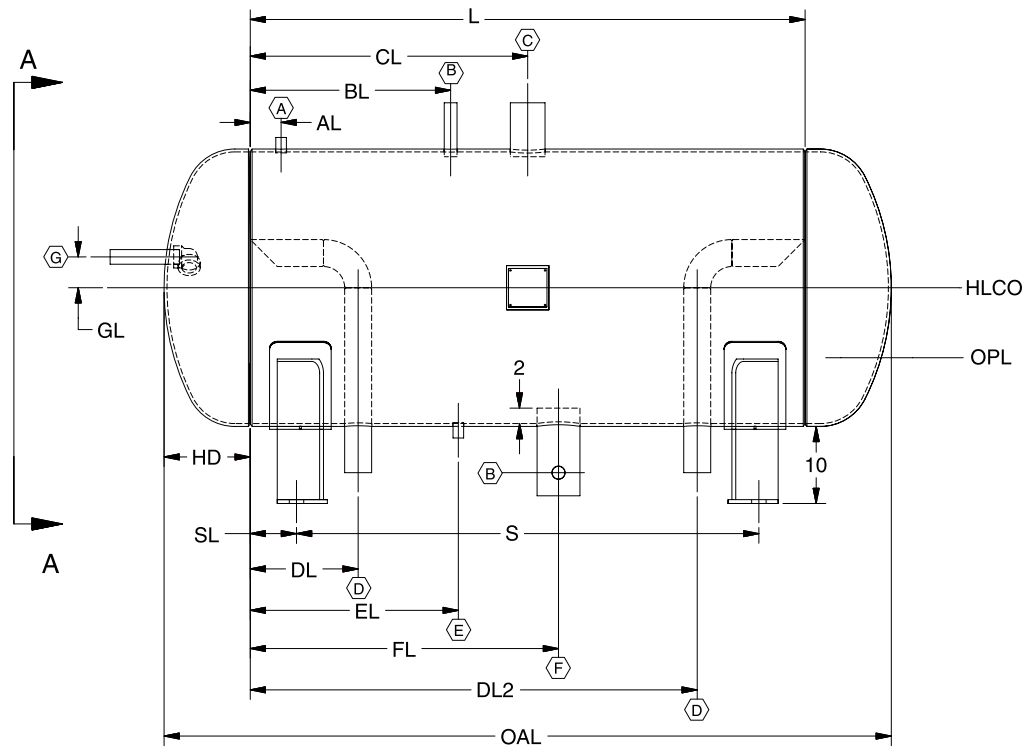


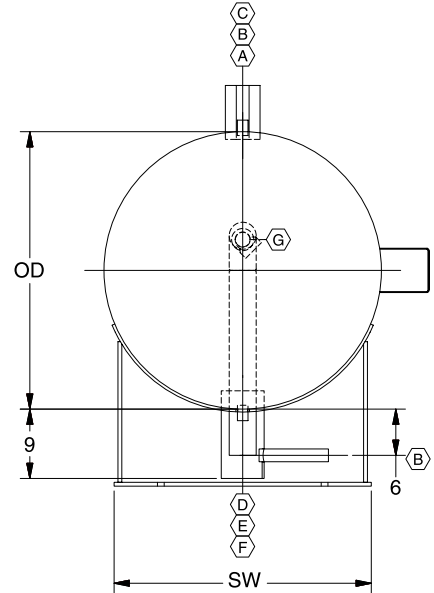
Figure 2. Data and Dimensions



MODELS
AA-40
AA-50
AA-60
AA-70

Key to Nozzle/Coupling Locations:

- A - Relief (Coupling)
- B - Level Column
- C - Gas Outlet
- D - Wet Return
- E - Drain (Coupling)
- F - Liquid Outlet
- G - Liquid Makeup
- OD - Outside Diameter
- HD - Head Depth
- L - Shell Length
- OAL - Overall Length
- OPL - Operating Level
- HLCO - High Level Cutout
- S - Saddle Separation
- SL - Left Saddle
- SW - Saddle Width



VIEW A-A

NOTES:

1. All dimensions and nozzle nominal pipe sizes are given in inches unless noted otherwise.
2. Operating charge at OPL is based on ammonia @ +30°F RT.
3. Nozzle connections are supplied as pipe stubs unless otherwise specified as a coupling (Cplg).
4. Couplings are ASME B16.11 Class 3000 "full" couplings.
5. Nozzles are sized for R-717 and should not be used with other refrigerants (e.g. R-507).
6. Nameplate bracket is approximately 6 inches deep to allow for insulation.
7. All dimensions are subject to change; please consult factory for certified drawings.
8. Vessels are built in accordance with ASME Boiler & Pressure Vessel Code, Section VIII, Division 1.

Figure 3. Data and Dimensions

DIMENSIONAL DATA

AcuAir Model	Surge Drum Model Number	Fig. Ref. No.	M A W P	OD	OAL	HD	L	Uninsulated Dry Wt (lbm)	R-717 Operating Charge (lbm)	Weight (lbm) w/Max Charge	Surge Vol. (cu-ft)	O P L	H L C O	A†	B†	C†
AA-10	AHSD-24-66	1	300	24	66	8 ³ / ₁₆	49 ⁵ / ₈	610	82.3	920	5.48	5	12	1/2	1	2
AA-15	AHSD-24-78	1	300	24	78	8 ³ / ₁₆	61 ⁵ / ₈	720	99.0	1,090	6.54	5	12	1/2	1	2½
AA-20	AHSD-24-96	1	300	24	96	8 ³ / ₁₆	79 ⁵ / ₈	880	123.9	1,330	8.13	5	12	1/2	1	3
AA-30	AHSD-30-113	2	250	30	113 ³ / ₈	9 ¹¹ / ₁₆	94	1,310	341.6	2,150	12.41	8	15	3/4	1¼	3
AA-40	AHSD-36-94	3	250	36	94 ³ / ₈	11 ³ / ₁₆	72	1,300	365.5	2,300	15.64	9	18	3/4	1¼	4
AA-50	AHSD-36-116	3	250	36	116 ³ / ₈	11 ³ / ₁₆	94	1,610	459.7	2,850	19.50	9	18	3/4	1¼	4
AA-60	AHSD-36-140	3	250	36	140 ³ / ₈	11 ³ / ₁₆	118	1,940	562.6	3,460	23.70	9	18	3/4	1¼	4
AA-70	AHSD-42-119	3	250	42	119 ³ / ₈	12 ¹¹ / ₁₆	94	1,920	596.2	3,650	28.31	10	21	3/4	1¼	5

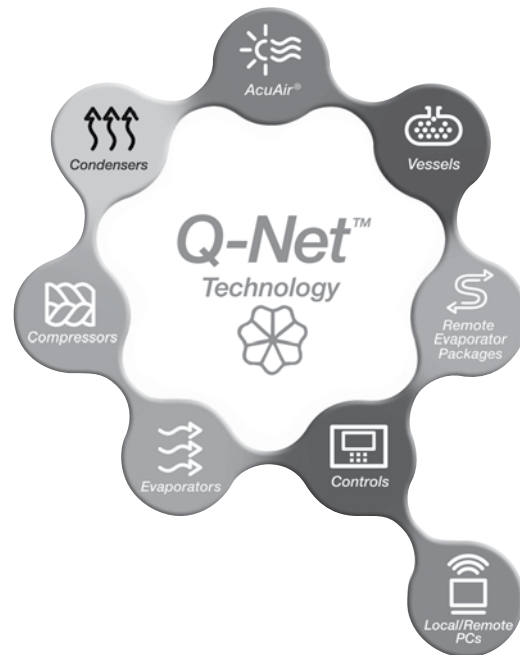
AcuAir Model	Model Number	D† (*2X)	E†	F†	G†	AL	BL	CL	DL (*2X)	DL2	EL	FL	GL	OPL	HLCO	S	SL	SW
AA-10	AHSD-24-66	2½	1	4	1	4	37	45.5	11	N/A	24 ¹³ / ₁₆	37	3	5	12	39 ⁵ / ₈	5	22¾
AA-15	AHSD-24-78	2½	1	4	1	4	38	56.5	12	N/A	25	38	3	5	12	51 ⁵ / ₈	5	22¾
AA-20	AHSD-24-96	3	1	4	1¼	4	39	74.5	13	N/A	26	39	3	5	12	69 ⁵ / ₈	5	22¾
AA-30	AHSD-30-113	2½*	1	5	1¼	4	40	88	14*	12	27	40	4	8	15	82	6	28
AA-40	AHSD-36-94	3*	1	5	1½	4	26	36	14	58	27	40	4	9	18	59½	6¼	33 ³ / ₈
AA-50	AHSD-36-116	3*	1	6	1½	4	34	47	14	80	27	40	4	9	18	81½	6¼	33 ³ / ₈
AA-60	AHSD-36-140	3*	1	6	2	4	40	59	14	104	27	40	4	9	18	105½	6¼	33 ³ / ₈
AA-70	AHSD-42-119	4*	1	6	2	4	36	47	16	78	29	42	5	10	21	79½	7¼	38 ⁵ / ₈

† Nozzle/ Coupling NPS (see footnotes 3, 4, 5)

Q-NET™ network technology...

Connect Your PC
with QUANTUM™LX!

*Take full advantage of Q-NET™
technology with all Frick products!*



System integration is what we do...

- Q-NET™... supports open-protocols for SCADA systems (i.e. Allen-Bradley® DF1, Modbus RTU, Modbus ASCII, and Industrial Ethernet Protocols)
- Q-NET™... connects instantly for local or remote access; no software required
- Q-NET™... can be applied to both new and existing systems
- Q-NET™ means precise control 24 hours a day, seven days a week
- Q-NET™ distributed architecture mean faster, easier, economical installations
- Q-NET™ delivers increased operating efficiency and lowers energy costs

Available on Frick screw compressors, condensers, evaporators, AcuAir® hygienic air handlers, and refrigerant vessels.