

Snare Drums

PRO-CUSTOM/ARTWOOD SERIES/POWERMETAL SERIES



TAMA[®]



PRO-CUSTOM POWERMETAL SERIES ARTWOOD SERIES

Today's drummer is faced with the challenge of having to respond to a variety of musical styles. As an artist, the percussionist must constantly be working to create something new and different.

Every drummer has his own concept of what makes a good snare drum. At Tama, we believe our new line represents the kind of snare drums that can meet these wide ranging needs.

We constantly consult with professional drummers, producers and engineers regarding the characteristics they want in a drum. Our new snare drum line is the result of our work with these industry leaders. As you read through this catalog, we're sure you will see how Tama's snare drum selection can play a vital role in responding to your drumming needs.

CONTENTS:

4-9	PRO-CUSTOM	SNARE DRUM
10-11	FEATURES	
12-13	ARTWOOD	SOLID MAPLE SNARE DRUM
14-15	ARTWOOD	MAPLE SNARE DRUM
16-17	ARTWOOD	BIRCH SNARE DRUM
18-19	POWERMETAL	BRASS SNARE DRUM
20	POWERMETAL	BELL-BRASS SNARE DRUM
21	POWERMETAL	STEEL SNARE DRUM
22-23	ACCESSORIES	

PRO-CUSTOM
SOLID MAPLE
SNARE DRUM



Model No. PS2246G

Shell : 6½" Maple
Shell Finish : Antique Brown — Lacquer Finish
Shell Construction : 3.5mm Solid Maple
Lugs : PAT30
Strainer : Cam-lever
Hoops : Bell-brass
Snappy Snares : Steel Sensitive
Heads : WK Coated/WK Clear
Hardware Finish : Gold

SOLID MAPLE

Solid yet light weight, Tama's one piece 3.5mm maple shell is painstakingly prepared and molded to ensure perfect roundness and uniform weight mass. The shell is then doubly reinforced with carved wood rings. Since there are no plies of wood, the drum is extremely sensitive allowing it to perform either the delicate subtleties of a classical passage or the thunderous back beat required in Rock.

CAM-LEVER STRAINER

In the on position you want your strainer anchored like a rock but able to cut out easily. These opposing needs are reconciled with the use of a cam-lever whose forward / back style mechanism follows the pendulum motion of the tape holder. The result is a noiseless, smooth switchover. Tama's die-cast strainer provides even tension on both the snare and butt side and unlike other strainers needs no screwdriver for tightening—a tuning key is all that's required.

PRO-CUSTOM
COPPER
SNARE DRUM



Model No. PC3136CB

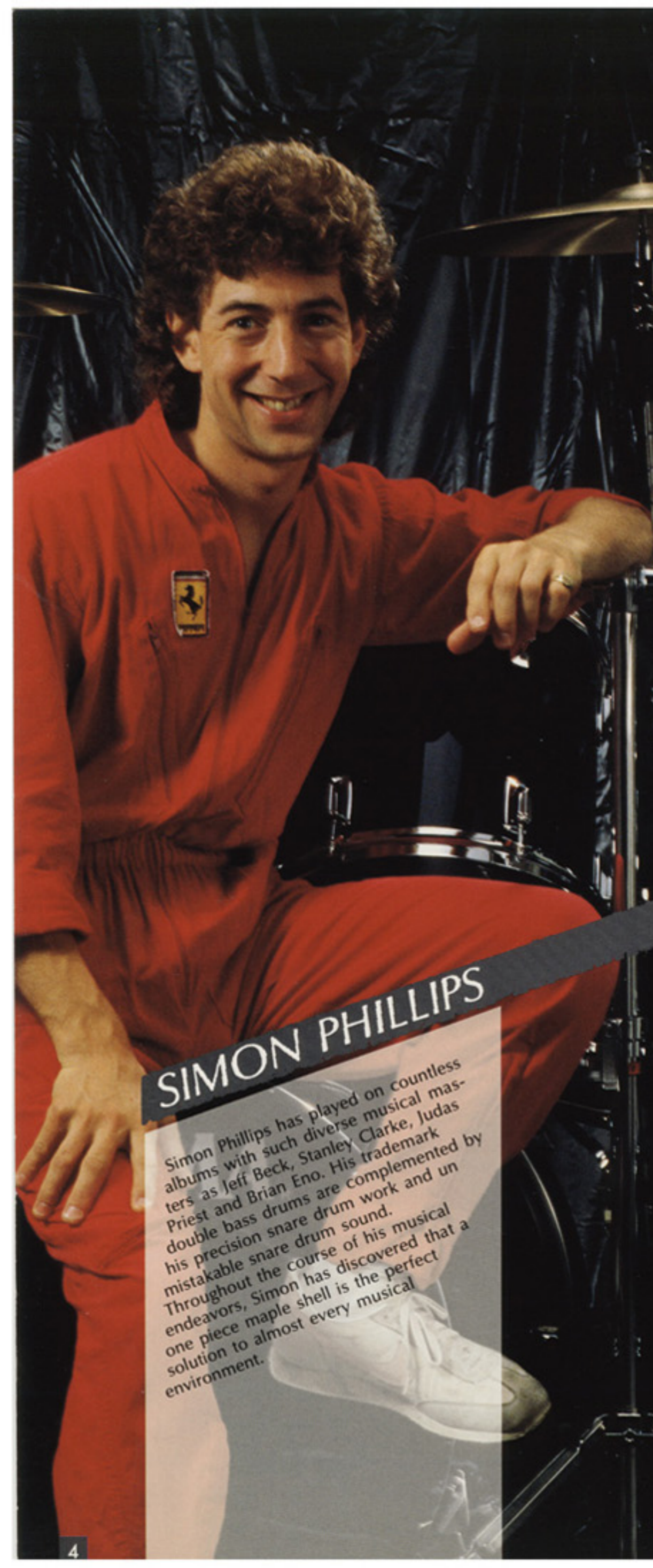
Shell : 6½" Copper — 1mm Thickness
Shell Finish : Custom Copper
Lugs : Freedom
Strainer : Roller Action
Hoops : Die-cast
Snappy Snares : Steel Sensitive
Heads : WK Coated/WK Clear
Hardware Finish : Cosmo Black

COPPER SHELL

Copper has certain unique reverberative qualities. As a shell material, its tone is somewhere between wood and steel. Copper drums provide the crack and delivery of a metal drum along with the more sensitive qualities of wood. The best of both worlds.

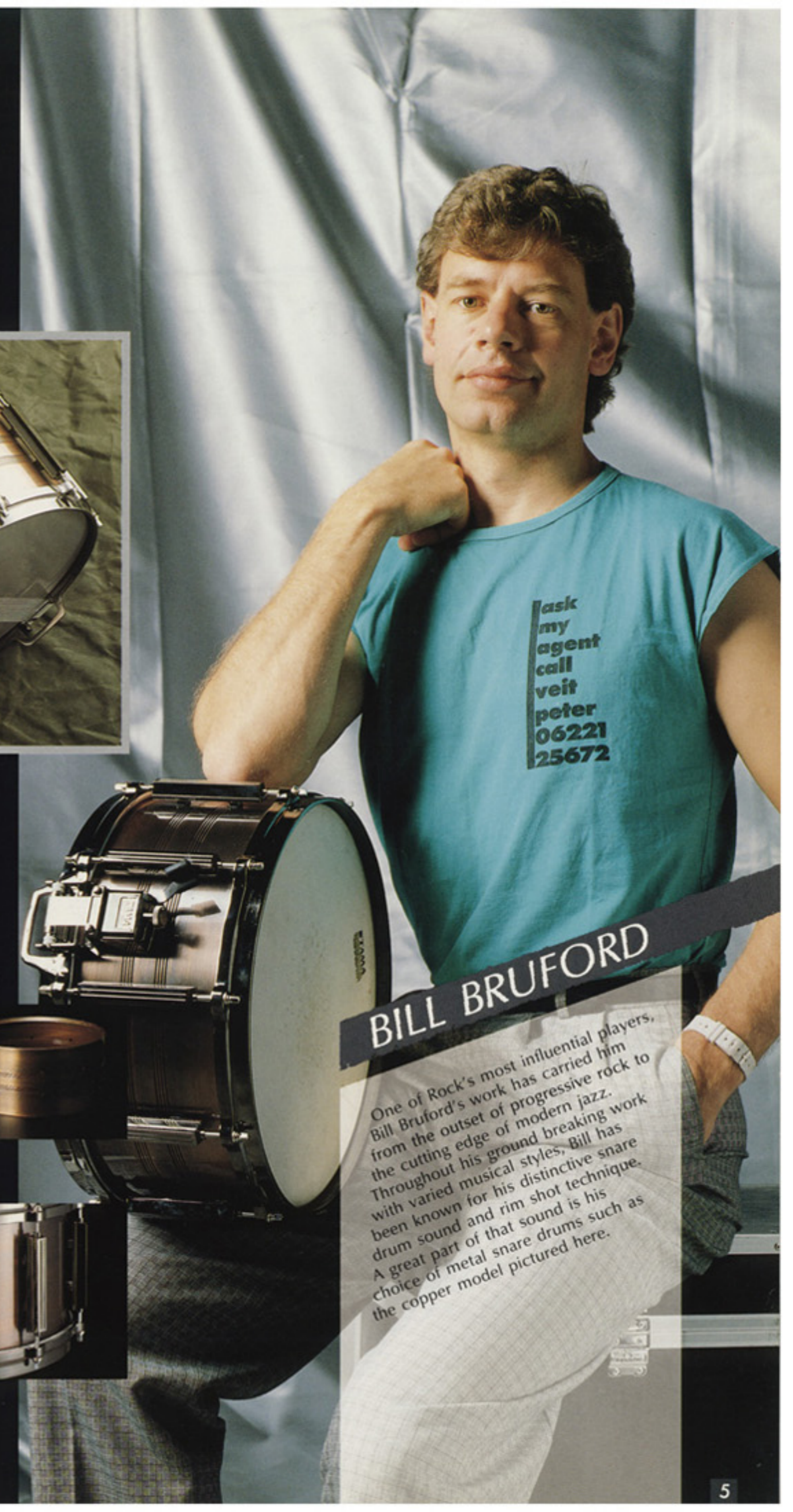
FREEDOM LUG

The less hardware touching the shell, the freer the shell vibrates. With this principle in mind, Tama designed its Freedom Lug, essentially suspending the hardware over the shell by way of acoustic insulators. During the course of playing, drum tension lugs tend to loosen. An exclusive component in the Tama Freedom Lug is the Rod Lock, a tiny internal spring that pinches the rod so that tuning is noiseless, stable and worry-free.



SIMON PHILLIPS

Simon Phillips has played on countless albums with such diverse musical masters as Jeff Beck, Stanley Clarke, Judas Priest and Brian Eno. His trademark double bass drums are complemented by his precision snare drum work and an unmistakable snare drum sound. Throughout the course of his musical endeavors, Simon has discovered that a one piece maple shell is the perfect solution to almost every musical environment.



BILL BRUFORD

One of Rock's most influential players, Bill Bruford's work has carried him from the outset of progressive rock to the cutting edge of modern jazz. Throughout his ground breaking work with varied musical styles, Bill has been known for his distinctive snare drum sound and rim shot technique. A great part of that sound is his choice of metal snare drums such as the copper model pictured here.

PRO-CUSTOM
BELL-BRASS
SNARE DRUM



Model No. PZ3226G

Shell : 6 1/2" Bell-brass — 3mm Thickness
Shell Finish : Clear Finish
Lugs : Freedom
Strainer : Cam-lever
Hoops : Brass Mighty Hoop
Snappy Snares : Steel Sensitive
Heads : WK Coated/WK Clear
Hardware Finish : Gold

BELL-BRASS SHELL

Our research has shown materials with a low base frequency are the ones most able to achieve the sounds desired by a large cross section of drummers. Bell-Brass snare drums give the lowest fundamental frequency of any other commercially available metal drum. Our Bell-Brass shell starts out at 12mm thick and is then carefully machined from inside out to 3mm. Next, it's polished and lacquered for finish protection and enhanced appearance. Then it's fitted with the finest hardware technology can offer. The Tama Bell-Brass snare is the epitome of craftsmanship, durability and sound capabilities: a true work of art.

BRASS MIGHTY HOOP

Tama's Brass Mighty Hoop is 2.3mm pressed brass, a combination of material and dimension that places a greater emphasis on high frequencies. This places its performance between conventional pressed steel hoops and our extraordinary Bell-Brass Hoop. The use of the Brass Mighty Hoop on any snare drum will expand its highs and allow the drummer to serve up rim shots of commanding penetration.



PRO-CUSTOM
BIRD'S EYE
MAPLE
SNARE DRUM



Model No. PB3246G

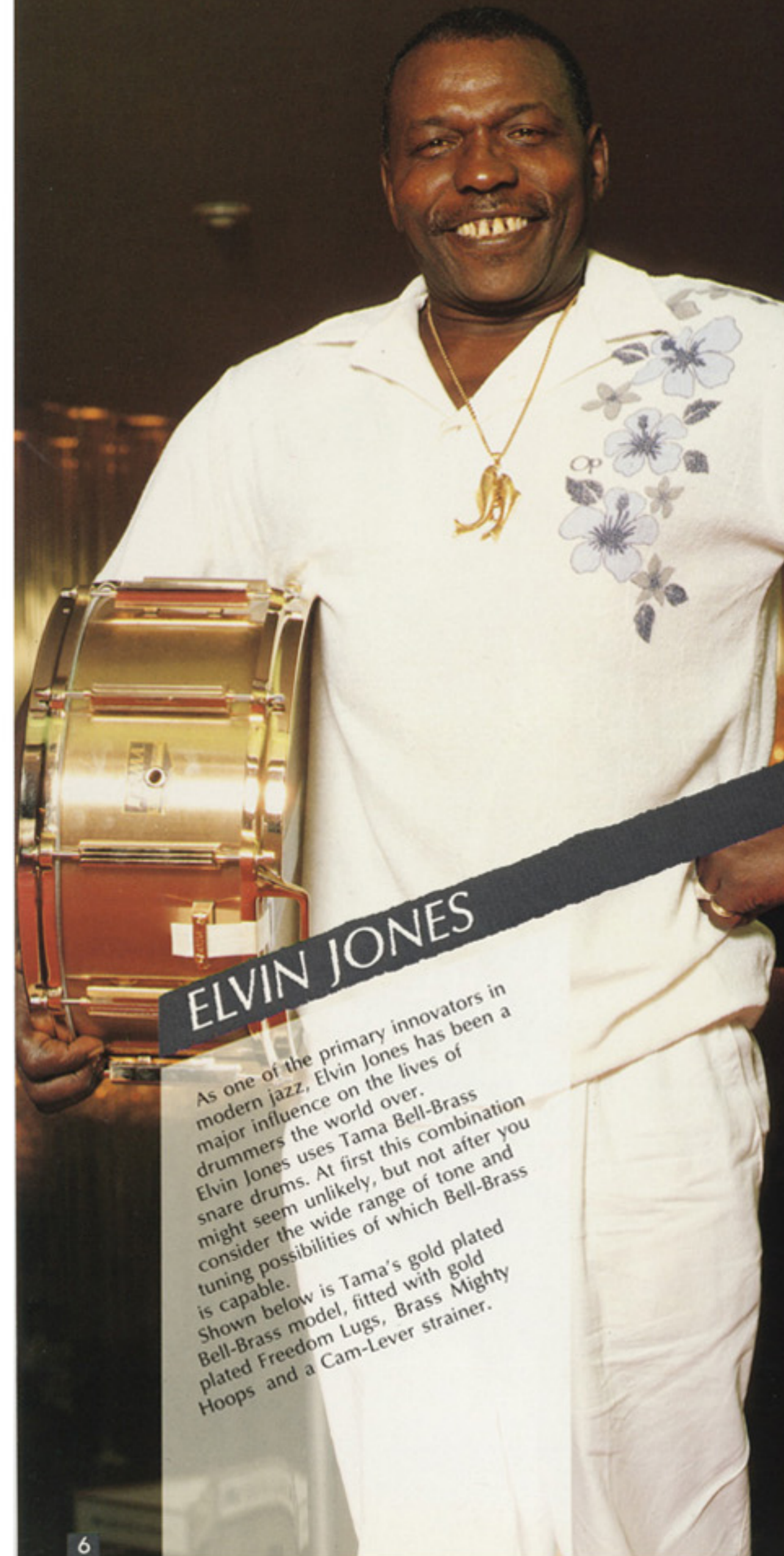
Shell : 6 1/2" Bird's Eye Maple
Shell Finish : Antique Brown — Lacquer Finish
Shell Construction : 7mm Thickness — 8ply
Lugs : Freedom
Strainer : Cam-lever
Hoops : Bell-brass
Snappy Snares : Steel Sensitive
Heads : WK Coated/WK Clear
Hardware Finish : Gold

BIRD'S EYE MAPLE SHELL

Coming from colder climes, maple is a wood with a naturally low moisture content. After several years of natural seasoning, we take the maple we use and season it even further in our factory to bring the moisture content to a level perfect for musical instrument manufacturing. After forming the wood into shells, we allow it to season naturally one more time to make sure that the drum it becomes keeps its perfect roundness. The finishing touch arrives when carefully stained and polished pieces of Bird's Eye Maple are used on the outside and inside of these shells to give this musical material an especially compelling appearance.

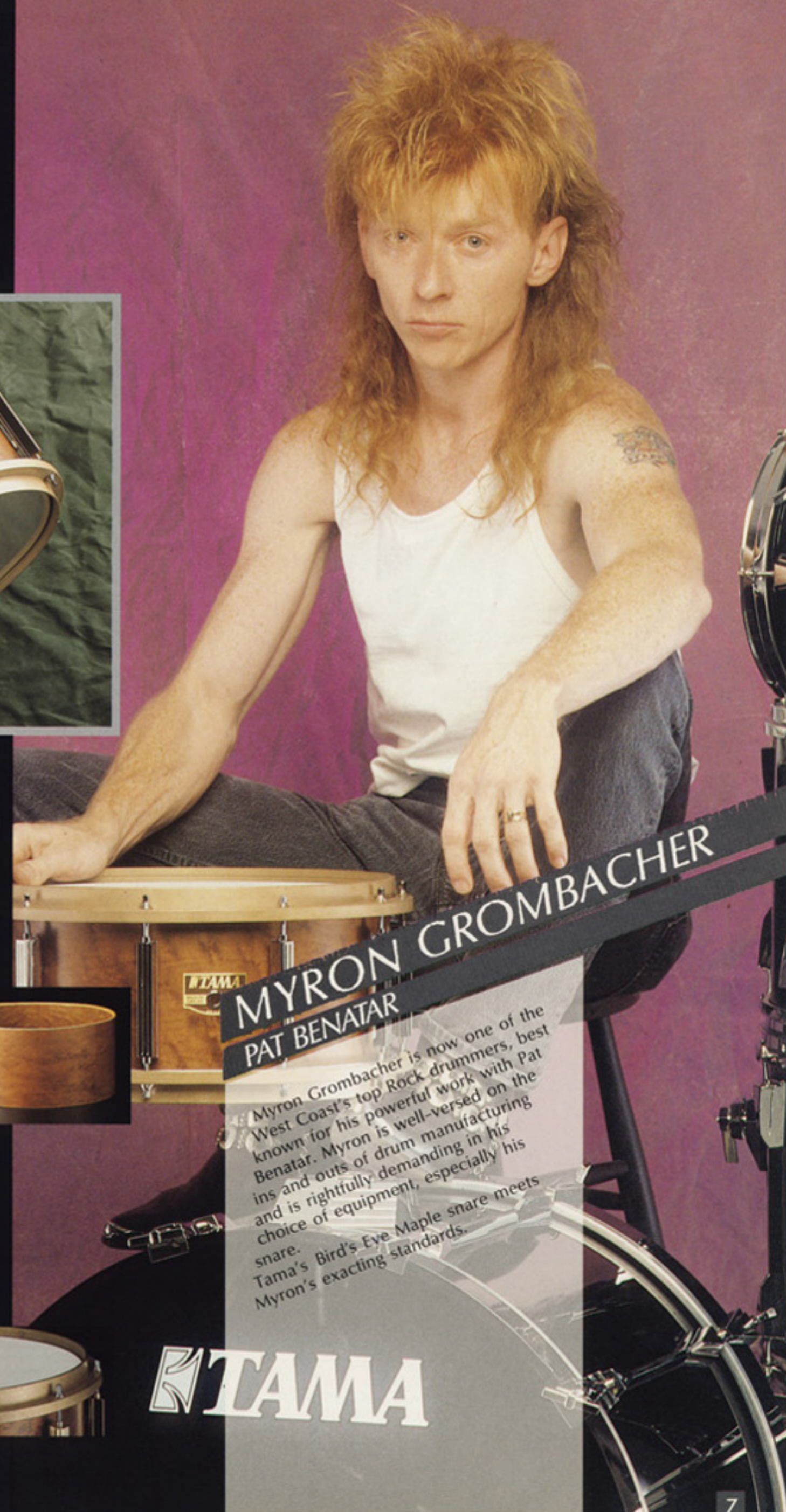
BELL-BRASS HOOP

Bell-Brass is not only a great resonating material for drums but as a hoop brings out the sonic qualities of any drum. The use of Bell-Brass hoops on our Pro-Custom Maple drums was the inevitable choice for extending the potential of an already "live" material.



ELVIN JONES

As one of the primary innovators in modern jazz, Elvin Jones has been a major influence on the lives of drummers the world over. Elvin Jones uses Tama Bell-Brass snare drums. At first this combination might seem unlikely, but not after you consider the wide range of tone and tuning possibilities of which Bell-Brass is capable. Shown below is Tama's gold plated Bell-Brass model, fitted with gold plated Freedom Lugs, Brass Mighty Hoops and a Cam-Lever strainer.



MYRON GROMBACHER
PAT BENATAR

Myron Grombacher is now one of the West Coast's top Rock drummers, best known for his powerful work with Pat Benatar. Myron is well-versed on the ins and outs of drum manufacturing and is rightfully demanding in his choice of equipment, especially his snare. Tama's Bird's Eye Maple snare meets Myron's exacting standards.





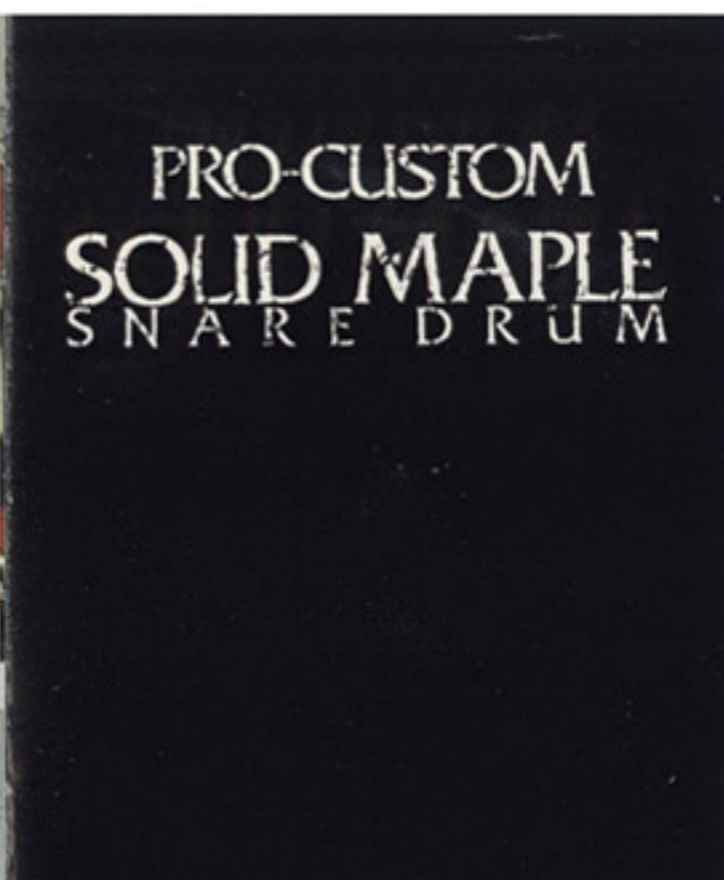
DAVE HOLLAND
JUDAS PRIEST

Dave Holland and Judas Priest represent all the dynamic energy that Metal unleashes. This genre needs a snare that cuts through searing guitars, pounding basses and hordes of screaming fans, doesn't sacrifice depth, attack or responsiveness. Dave has found that a rosewood snare drum suits his requirements for recording as well as the rigorous demands of an extensive touring schedule.



Model No. PR3138G

Shell : 8" Rosewood
Shell Finish : Natural Gloss
Shell Construction : 8mm Thickness — 12ply
Lugs : Freedom
Strainer : Roller Action
Hoops : Die-cast
Snappy Snares : Steel Sensitive
Heads : WK Coated/WK Clear
Hardware Finish : Gold

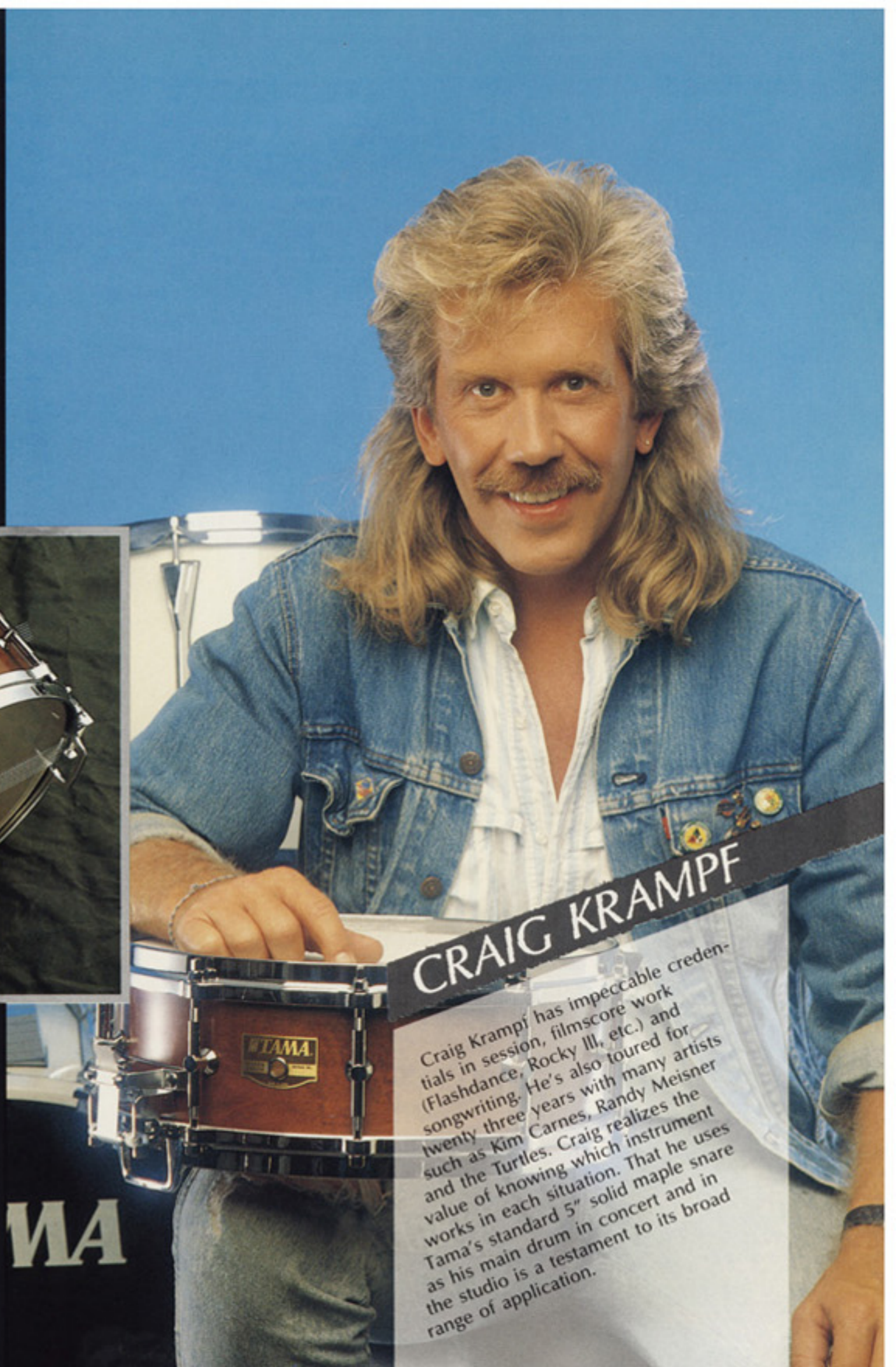


PRO-CUSTOM
SOLID MAPLE
SNARE DRUM



Model No. PS2135C

Shell : 5" Maple
Shell Finish : Antique Brown — Lacquer Finish
Shell Construction : 3.5mm Solid Maple
Lugs : PAT30
Strainer : Roller Action
Hoops : Die-cast
Snappy Snares : Steel Sensitive
Heads : WK Coated/WK Clear
Hardware Finish : Chrome



CRAIG KRAMPF

Craig Krampf has impeccable credentials in session, film score work (Flashdance, Rocky III, etc.) and songwriting. He's also toured for twenty three years with many artists such as Kim Carnes, Randy Meisner and the Turtles. Craig realizes the value of knowing which instrument works in each situation. That he uses Tama's standard 5" solid maple snare as his main drum in concert and in the studio is a testament to its broad range of application.

ROSEWOOD SHELL



Measured on a vibration analyzer, rosewood produces a long wave with little distortion. This means that a major characteristic of rosewood is its long sustain. Other musical instruments, such as acoustic guitars, mallet instruments and woodwinds, have long utilized rosewood for its beautiful sound and structural rigidity. Like other materials chosen for our snare drums, this wood has a low fundamental frequency which translates into sound flexibility and potential.

ROLLER ACTION STRAINER



A Roller Action strainer utilizes a guide roller underneath the strainer. The motion of this roller provides smooth, silent on/off action when kicking the strainer in or out. Although it's a fairly sophisticated mechanism, the roller action strainer has been a favorite for years as it's easy to adjust and maintains strainer tension.

PAT30 LUG



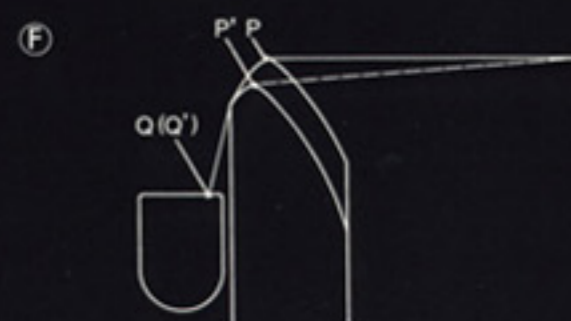
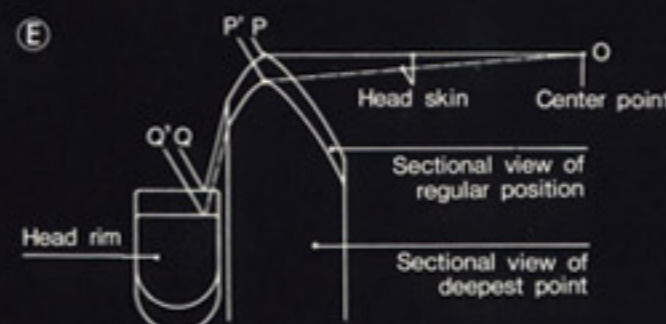
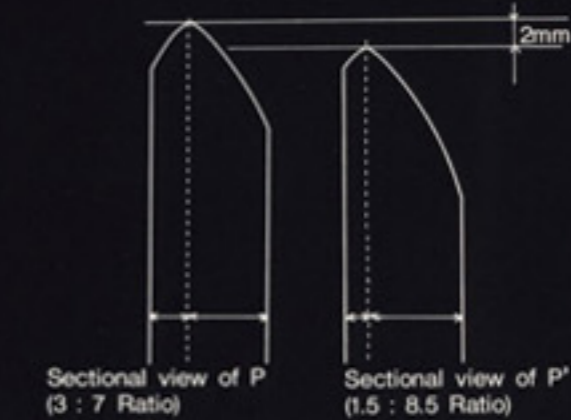
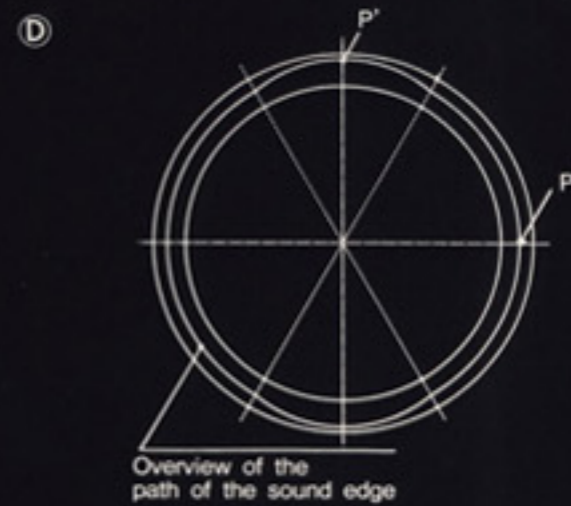
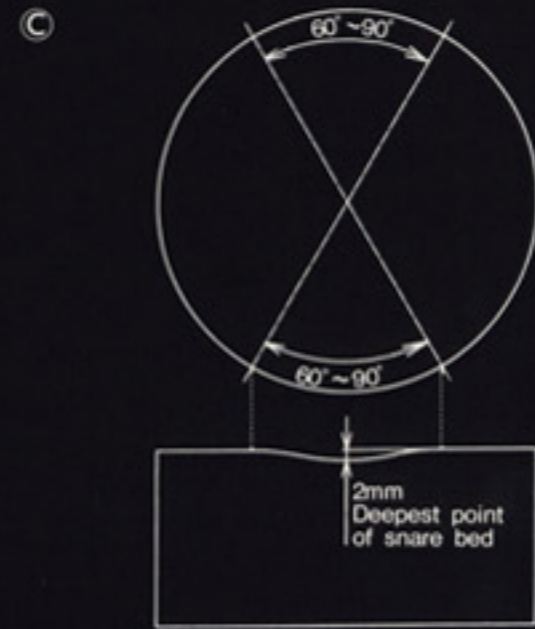
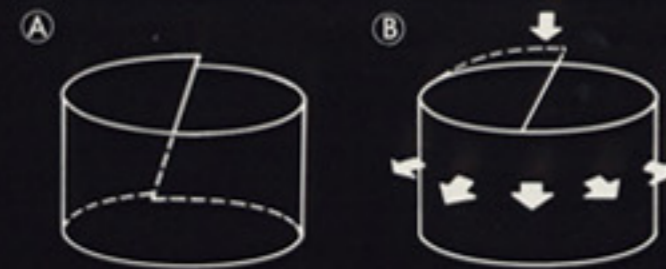
Tuning a snare drum properly takes a lot of time. The top head must match the bottom head and the tension of the snares against the surface of the snare head has to be just right. After all this is accomplished, the drum is placed back on the stand and very often the drum's tuning has shifted due to its new positioning and the stand's pressure. The PAT30 lug solves this problem by allowing the drummer to tune both heads from the top while the drum's still on the stand.

We take a shell of solid maple, carve it to the traditional five inch depth and then fit it with Tama's low mass hardware. This produces a drum that satisfies the musician's need for a rich performing drum with the engineer's need for an instrument that can be recorded with ease. The PS2135C snare drum's Solid Maple wood is stained a gorgeous Antique Brown. It's striking hardware, richly grained wood and painstaking craftsmanship maintain the Tama tradition of utility matched with beauty.

5" DEPTH
SOLID MAPLE SHELL



SHELL MANUFACTURING



One of the fundamental aspects of producing a quality drum is shell construction. While we consider our standards and processes to be the most exacting in the industry, we're constantly looking for new designs, methods and even materials.

The most important point in body construction centers around crafting a perfectly round shell. An out of round shell can't be tuned or vibrate properly.

At Tama, we start by cutting the shell material at a 45 degree angle at both ends and then place it in a molding machine. The shell is then fitted together, as in Diagram A. The tension caused by the bending of the shell material now causes it to "want" to move outward over the top and bottom of the mold. One ton of downward pressure is then applied to keep the shell material in the mold and channel its springlike energy in an outward direction to conform to the mold's shape of perfect roundness (diagram B).

Another ply is then placed inside. Pressure is then applied from the center of the mold to firmly glue and join the new piece to the original. The same process is repeated until the number of plies needed for the particular shell style is reached.

The second most important point of the drum's construction is the formation of the shell's bearing edge. To make sure the snares make proper contact with the snare side head, two small gently curved depressions are carved out on the strainer side and butt side of the shell to form the snare bed. Each area of our snare bed is between 60-90 degrees—depending on the shell material—of the shell circumference and about 2 mm at its deepest point. These areas are illustrated in diagram C.

The main feature of the Tama snare edge is that its path changes as it goes through the snare bed area. If you look at the sound edge from directly above, instead of a perfectly round shaped path you have one that appears almost like an oval, as illustrated in Diagram D. This slightly larger diameter distributes tension more evenly around the snare head for easier tuning. In addition, this results in improved snare wire/snare head contact yielding greater sensitivity.

Compare the shell edge of other drum companies (diagram E) with Tama's original design (diagram F). In diagram E, the line from O-P'-Q' shows the drum head's "skin" at the deepest point of the snare bed; the line from O-P-Q shows the "skin" along the rest of the edge. If you could press the rim of the head at both points evenly, the head would appear as indicated in this diagram.

In reality, the rim of the head won't be pulled down lower than point Q, because the hoop is not bent.

Therefore, the tension at point O-P'-Q' will be looser than at point O-P-Q. To compensate, the drummer must tune the tension rods tighter at the snare bed area than the rest of the drum. The hoop is pressed excessively and uneven tuning is the result.

As diagram F shows, point P' is located further out than point P. This makes the length of the line from O to P' longer. As a result, point Q and Q' will be at almost the same point. In this case, the result of Tama's shell edge design is more even head tuning.

CAM-LEVER STRAINER & BUTT

The most common strainer today is controlled by a switch with a forward/back motion. When a Cam-lever style mechanism is incorporated, switching becomes quick, easy and noiseless. The tension adjustment knob is designed to be slightly larger than average and has been located for easy access.

The snare strap is held securely in place by a V-shaped clip mount assembly eliminating snare slippage during playing. Snares can be replaced using nothing more than your drum key.

ROLLER ACTION STRAINER

The lower part of the strainer consists of a roller that makes for noiseless, easy switching. This mechanism is designed to convert the switches side-to-side motion to the up-and-

down motion of the snare strap holder. Tama's Roller Action strainer has been engineered for years of trouble free operation.

PAT30 LUG

The PAT30 lug is a new mass tensioning system designed to accommodate simultaneous top and bottom head tuning from the batter side of the drum.

By using a specially designed three way drum key, the following tuning methods are possible:

1. Tuning the batter head from the top.
2. Tuning the snare (bottom) head from the top.
3. Tuning the snare (bottom) head and the batter head simultaneously from the top.
4. Tuning the snare (bottom) head from the bottom.

The lug is attached to the snare shell using a minimum of surface space, eliminating interference with the body's vibration response. A rubber washer fitted between the lug and the drum also prevents the shell from picking up any vibrations transmitted through the lug.

FREEDOM LUG

Another Tama lug design to minimize surface contact with the drum shell. The Freedom Lug helps to prevent any unnecessary loosening of the tension bolts thus promoting tuning stability.

As the diagram illustrates, a small spring locks the tension rod as it is tuned. This spring is noiseless and its tensile strength keeps your drum playing the way you set it for long periods of the strongest playing.

TWO-WAY LUG

The traditional look of the Two-Way Lug evokes memories of the past, but its function is based on Tama's technology of the present. Like the PAT 30, no lug nut is required as the tension rod is held directly by the column itself. Nylon Rod Locks located on either side of the column help to prevent snare drum detuning.

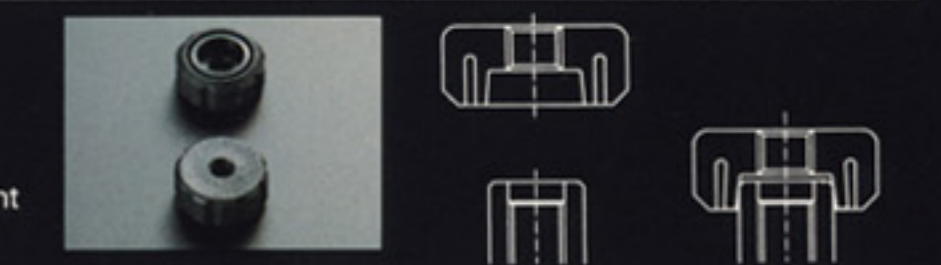
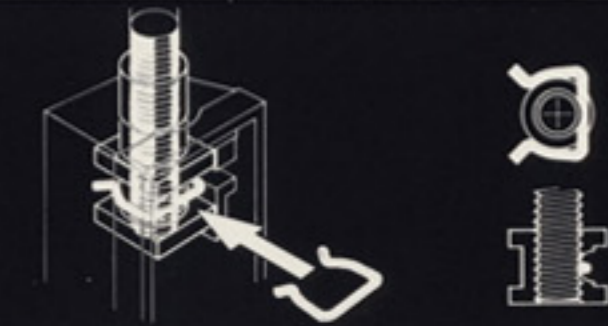
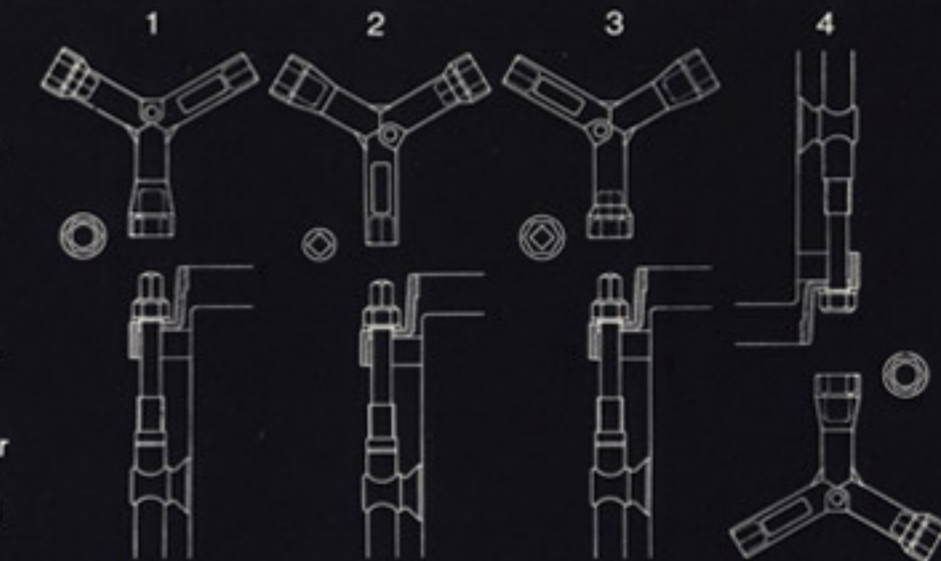


HOOPS

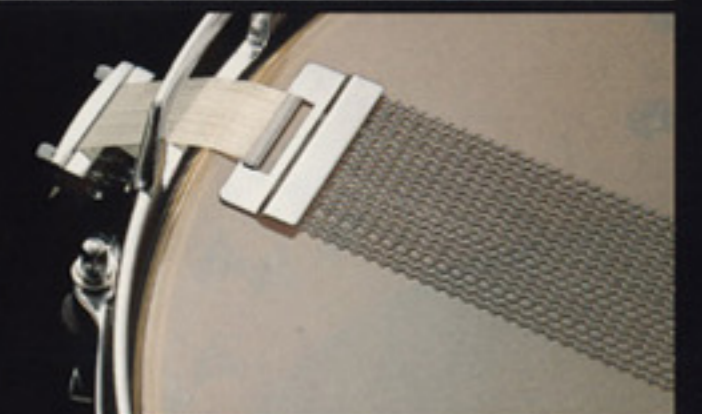


Tama makes four different hoops, each designed to enhance specific qualities in different Tama shells.

- The Mighty Hoop is a 2.3mm thick, steel triple flanged hoop with a strong attack characteristic.
- The Brass Mighty Hoop same—specifications as above but even brighter.
- The Tama Zinc Die-Cast Hoop is a splendid example of perfect roundness, complete rigidity and full sonority.
- Bell-Brass Hoops are sturdy and allow for a much greater range of tuning possibilities. Even when used on just the batter side, Bell-Brass is capable of generating a surprising array of sounds. A wide spectrum of tones is available even when the snare is tuned down.



STEEL SENSITIVE SNAPPY SNARES



Tama's Snappy Snare coils are spaced at longer intervals for more sensitivity and strength. In fact, the intervals are nearly twice the length of an ordinary snare. As a result, the bottom head's response is much faster.

ARTWOOD SERIES SOLID MAPLE SNARE DRUM



Drawing on years of comment and opinion from our endorsement artists, Tama has concluded that shells producing a low, even frequency are preferred. The single ply maple drum is the original, time honoured wood snare drum. The warmth, extreme clarity and splendid performance in any tuning range so valued by the pioneers of the twenties and thirties have been reborn and reinforced for the Artwood Solid Maple series—the snare drum of the 90's.

Recording engineers and studio musicians have an extra dimension to consider in snare drum sound. They're often working with digitally recorded sounds where to erances are at a minimum and creative sound possibilities at a maximum. This is where a uniformly tuned precision snare drum is crucial. Tama's years of research in this area led to the development of a radically different idea: the eleven lug snare drum.



ARTWOOD SERIES SOLID MAPLE SNARE DRUM "ELEVEN LUGS"



AW625-11 5×14
AW626-11 6½×14

These two models are the culmination of the all our work with solid maple wood, low mass technology and the eleven lug tuning system.

By placing eleven lugs on the batter side and ten lugs on the snare side, incredible tuning accuracy and flexibility have been achieved. This combined with the warm maple sound—unfettered by excessive surface to surface contact—has produced an instrument capable of satisfying the most demanding drummer or exacting producer.



AW625 5×14 AW628 8×14
AW626 6½×14

This is the standard others strive to achieve in a solid maple snare drum. A wide selection is available in 5", 6-½", and the powerful 8" depth now favored by so many drummers. Fitted with lightweight Two-Way lugs for unimpeded shell vibration and a Cam-Lever strainer for easy and sensitive tuning. Extra quick response is achieved through the use of a long pitch coil steel snappy snare. Available in the subtly beautiful Amber finish.

Model No.	Shell	Number of Lug	Type of Lug	Strainer	Hoops	Snares	Heads	Finishes
AW625	5 × 14 Solid Maple	10	Two-way	Cam-lever	Die-cast	Sensitive	WK Coated/WK Clear	AM
AW626	6½ × 14 Solid Maple	10	Two-way	Cam-lever	Die-cast	Sensitive	WK Coated/WK Clear	AM
AW628	8 × 14 Solid Maple	10	Two-way	Cam-lever	Die-cast	Sensitive	WK Coated/WK Clear	AM
AW625-11	5 × 14 Solid Maple	11/10	Two-way Piccolo	Cam-lever	Steel Mighty (11/10)	Sensitive	WK Coated/WK Clear	AM
AW626-11	6½ × 14 Solid Maple	11/10	Two-way Piccolo	Cam-lever	Steel Mighty (11/10)	Sensitive	WK Coated/WK Clear	AM

WHY ELEVEN LUGS?

An even number of lugs has always been the unquestioned standard. Our research into drum tuning has yielded what we believe is a better tuning technique and a better—if at first glance somewhat odd—eleven lug configuration.

An eleven lug snare drum would be tuned by following the sequence indicated in diagram A.

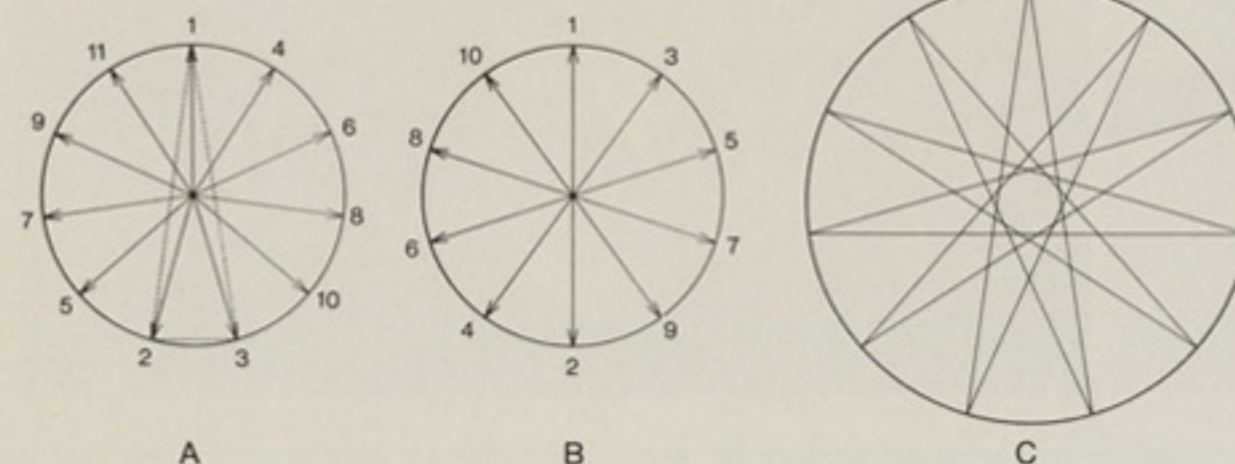
- I. First, tune point 1, then proceed to tune points 2 and 3 on the opposite side. This puts points 1, 2, and 3 in balance.
- II. Next, tune point 4. This puts point 4, 2, and 1 in balance.
- III. Tune point 5 which puts points 5, 4, and 2 in balance.

By continuing this process through point 11—with some minor tuning upon completion—a perfectly balanced tuning is achieved.

As illustrated in diagram B, a standard even multiple lug set up is tuned along a series of diagonal lines from lug to lug. This means that the highest point of head tension occurs at the center of the drum at a very small point.

With an eleven lug configuration, tuning occurs along a series of triangular patterns. The result here is that the highest point of head tension occurs at a much broader center point, as shown in diagram C. This larger center point means an increased playing area of maximum response.

The more evenly dispersed surface tension of this system yields the following benefits: better balance, no dead spots and the ability to create a wide variety of tuning styles with just a simple lug adjustment.



ARTWOOD SERIES MAPLE SNARE DRUM



The amount of force exerted on surface of a snare drum is tremendous; the pressures of the tension rods, hardware screws and even the stand itself can compromise the sound. For this reason the shell construction has to be of the finest quality and have the strength to deal with this stress. The 8 ply maple shells used in the Tama Artwood series have just this quality and strength.



AW523 3¼×14 **AW525** 5×14
AW526 6½×14 **AW528** 8×14
AW529 9×14

Tama offers the widest selection available in a snare series. Five models range in depth from the penetrating 3¼" piccolo to the cavernous 9" snare. All Maple snare drums are fitted with our new low mass Cam-Lever Strainer, "Two-Way" lug system and die-cast hoops. Sonic insulators isolate all metal parts from direct contact with the shell surface allowing the shell to vibrate with complete freedom. Artwood All Maple drums are available in Piano White, Piano Black and Amber.



AW523B **AW525B**
AW526B **AW528B**
AW529B
Also available with Brass Mighty Hoop.

AW523BM 3¼×14 **AW525BM** 5×14
AW526BM 6½×14 **AW528BM** 8×14
AW529BM 9×14

Eight sheets of maple are bonded together to create a 7mm thick shell that possesses more response and clarity than any other multi-ply drum. When the outer and inner plies are Bird's Eye Maple—an option in this series—this superb sounding drum becomes an instrument of breathtaking visual beauty. Bird's Eye Maple snare drums come standard with Die-cast Hoops and "Two-Way" lugs.



Model No.	Shell	Number of Lug	Type of Lug	Strainer	Hoops	Snare	Heads	Finishes
AW523	3¼ × 14 Maple	20	Two-way Piccolo	Cam-lever	Die-cast	Sensitive	WK Coated/WK Clear	PBK, PWH, AM
AW525	5 × 14 Maple	10	Two-way	Cam-lever	Die-cast	Sensitive	WK Coated/WK Clear	PBK, PWH, AM
AW526	6½ × 14 Maple	10	Two-way	Cam-lever	Die-cast	Sensitive	WK Coated/WK Clear	PBK, PWH, AM
AW528	8 × 14 Maple	10	Two-way	Cam-lever	Die-cast	Sensitive	WK Coated/WK Clear	PBK, PWH, AM
AW529	9 × 14 Maple	10	Two-way	Cam-lever	Die-cast	Sensitive	WK Coated/WK Clear	PBK, PWH, AM
AW523B	3¼ × 14 Maple	20	Two-way Piccolo	Cam-lever	Brass Mighty	Sensitive	WK Coated/WK Clear	PBK, PWH, AM
AW525B	5 × 14 Maple	10	Two-way	Cam-lever	Brass Mighty	Sensitive	WK Coated/WK Clear	PBK, PWH, AM
AW526B	6½ × 14 Maple	10	Two-way	Cam-lever	Brass Mighty	Sensitive	WK Coated/WK Clear	PBK, PWH, AM
AW528B	8 × 14 Maple	10	Two-way	Cam-lever	Brass Mighty	Sensitive	WK Coated/WK Clear	PBK, PWH, AM
AW529B	9 × 14 Maple	10	Two-way	Cam-lever	Brass Mighty	Sensitive	WK Coated/WK Clear	PBK, PWH, AM



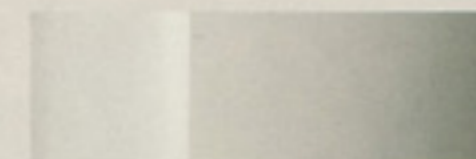
THIRTEEN INCHES DIAMETER SHELL

AW423-13 3¼×13
AW425-13 5×13
AW426-13 6½×13

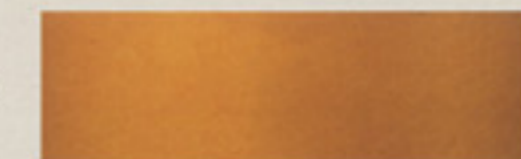
Thirteen inches is the traditional piccolo snare drum size. This diameter offers the possibility of higher pitch tunings, incredible volume and a remarkable ease of playing due to the smaller head surface. Three depths are available in this line: 3¼", 5", and 6½".



Piano Black (PBK)



Piano White (PWH)



Amber (AM)

Model No.	Shell	Number of Lug	Type of Lug	Strainer	Hoops	Snare	Heads	Finishes
AW523BM	3¼ × 14 Bird's Eye Maple	20	Two-way Piccolo	Cam-lever	Die-cast	Sensitive	WK Coated/WK Clear	AM
AW525BM	5 × 14 Bird's Eye Maple	10	Two-way	Cam-lever	Die-cast	Sensitive	WK Coated/WK Clear	AM
AW526BM	6½ × 14 Bird's Eye Maple	10	Two-way	Cam-lever	Die-cast	Sensitive	WK Coated/WK Clear	AM
AW528BM	8 × 14 Bird's Eye Maple	10	Two-way	Cam-lever	Die-cast	Sensitive	WK Coated/WK Clear	AM
AW529BM	9 × 14 Bird's Eye Maple	10	Two-way	Cam-lever	Die-cast	Sensitive	WK Coated/WK Clear	AM
AW423-13	3¼ × 13 Maple	16	Two-way Piccolo	Cam-lever	Steel	Sensitive	WK Coated/WK Clear	PBK, PWH, AM
AW425-13	5 × 13 Maple	8	Two-way	Cam-lever	Steel	Sensitive	WK Coated/WK Clear	PBK, PWH, AM
AW426-13	6½ × 13 Maple	8	Two-way	Cam-lever	Steel	Sensitive	WK Coated/WK Clear	PBK, PWH, AM

ARTWOOD SERIES BIRCH SNARE DRUM



Birch is a comparatively heavy wood and like maple is ideal for musical instruments. The sound of birch "cuts through" just a little harder than maple, has a lightning fast attack and displays excellent clarity throughout its entire range. Tama's birch shells come in two thicknesses of 9mm and 18mm.



**AW216 6½×14 AW218 8×14
AW219 9×14**

The use of birch allows for an amazing sensitivity even at the 9" depth. Aside from their visual appeal, polyurethane finished drums are marginally brighter than their covered counterparts. These three models are available in three lustrous finishes for coordination with Tama's Artstar or Pro-Line drums. Freedom Lugs and steel Mighty Hoops are used on these models.



**AW216D AW218D
AW219D**
Also available with
Die-cast Hoop.



AW106 6½×14 AW108 8×14

Covered drums offer not only extra protection but are also chosen by players desiring a slightly darker tone in their drum. Tama ensures the permanence of these qualities by roller pressing their covering sheets to the drum for a firm bond. Covered Birch snare drums also feature Power Lugs and steel Mighty Hoops.



AW316 6½×14 AW318 8×14

With their 14 ply, 18mm thickness, these models are the sturdiest wooden drum Tama makes. But sheer hardness is not the only reason for this drum. We wanted a drum made to stand up not just physically but musically to heavy hitting drummers whose forceful playing styles and resulting sound can often overwhelm a thinner drum. The use of the ultra-thick Emperor head rounds out the idea behind this drum's design: an instrument for the drummer with power to spare. Freedom Lugs and Die-cast Hoops are utilized.



Model No.	Shell	Number of Lug	Type of Lug	Strainer	Hoops	Snares	Heads	Finishes
AW316	6½×14 Heavy Birch	10	Freedom	Roller Action	Die-cast	Sensitive	WK Coated/Emperor/WK Clear	PBK, PWH
AW318	8×14 Heavy Birch	10	Freedom	Roller Action	Die-cast	Sensitive	WK Coated/Emperor/WK Clear	PBK, PWH
AW216	6½×14 Birch	10	Freedom	Roller Action	Steel Mighty	Sensitive	WK Coated/WK Clear	PBK, PWH, CHW
AW218	8×14 Birch	10	Freedom	Roller Action	Steel Mighty	Sensitive	WK Coated/WK Clear	PBK, PWH, CHW
AW219	9×14 Birch	10	Freedom	Roller Action	Steel Mighty	Sensitive	WK Coated/WK Clear	PBK, PWH, CHW
AW216D	6½×14 Birch	10	Freedom	Roller Action	Die-cast	Sensitive	WK Coated/WK Clear	PBK, PWH, CHW
AW218D	8×14 Birch	10	Freedom	Roller Action	Die-cast	Sensitive	WK Coated/WK Clear	PBK, PWH, CHW
AW219D	9×14 Birch	10	Freedom	Roller Action	Die-cast	Sensitive	WK Coated/WK Clear	PBK, PWH, CHW
AW106	6½×14 Birch	10	Power	Roller Action	Steel Mighty	Sensitive	WK Coated/WK Clear	RCH
AW108	8×14 Birch	10	Power	Roller Action	Steel Mighty	Sensitive	WK Coated/WK Clear	RCH

POWERMETAL SERIES
BRASS
 SNARE DRUM

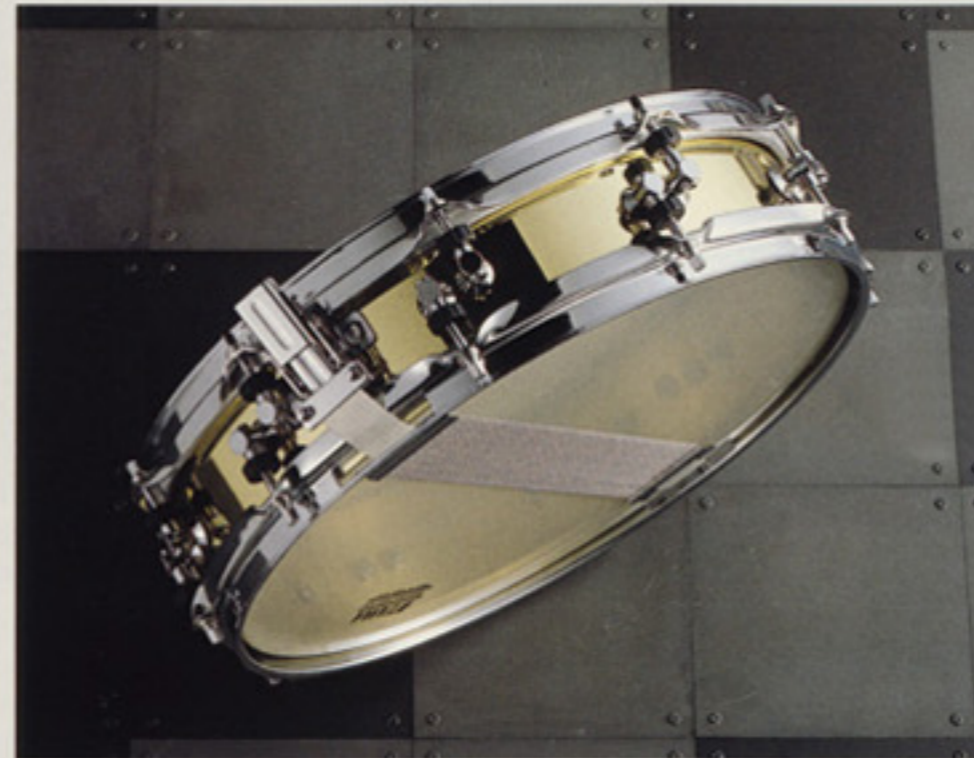


Brass is very often the preferred material for snare drums due to its ability to produce exceptionally bright and loud highs, a necessity for today's drummer who has to cut through vast walls of sound.



PM323 3 1/4 x 14

The PM323's marriage of brass material with piccolo size delivers absolute, undeniable sound penetration. These elements combined with the 2.3mm Mighty Hoop makes the PM323 perfect for use as a main or auxiliary snare drum.



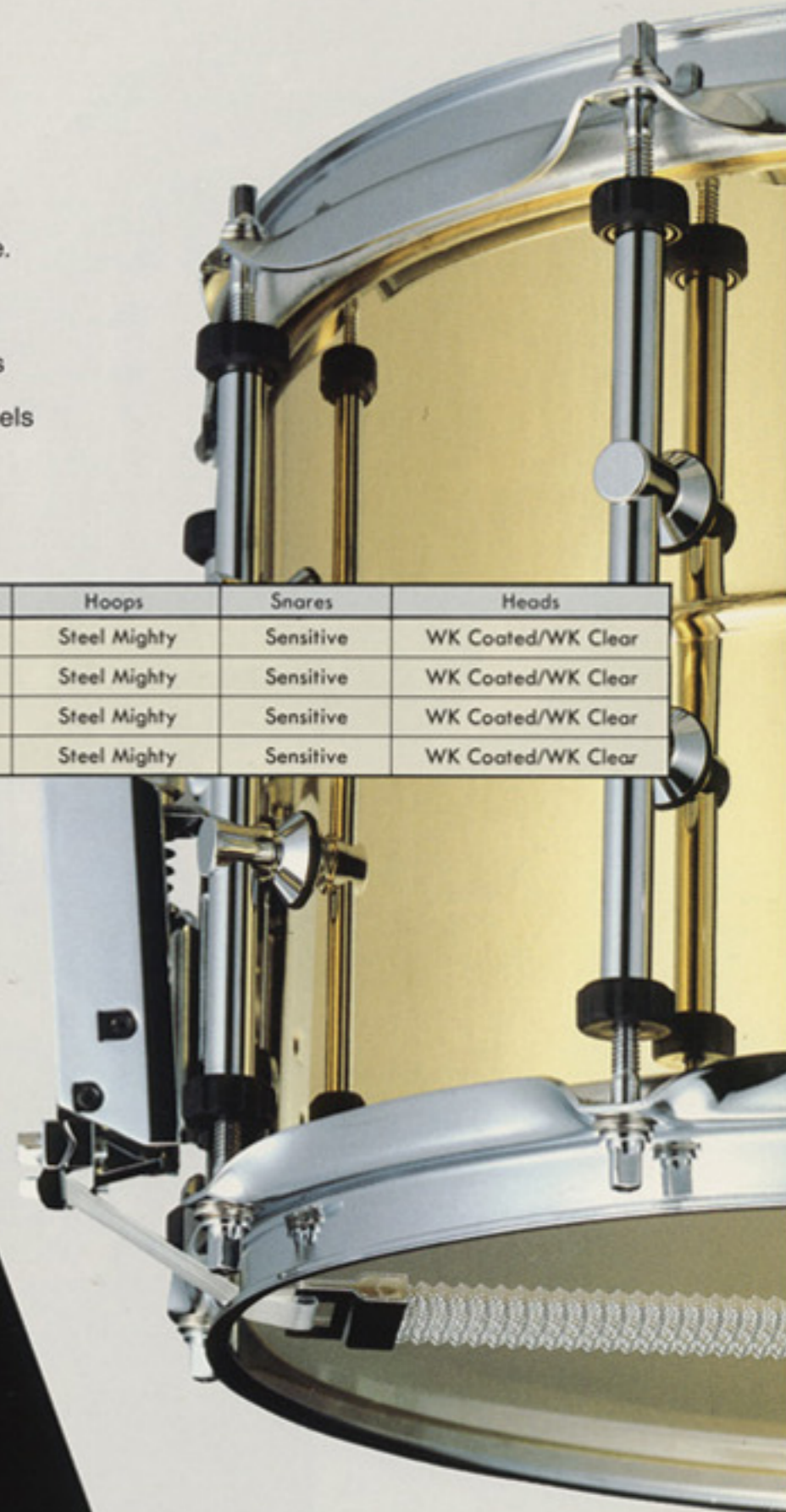
PM325 5 x 14
PM326 6 1/2 x 14

Our standard 5" and 6 1/2" brass snare drums. Tama's Two-Way Lug and the Cam-Lever Strainer use as little of the shell surface as possible thereby maximizing shell resonance. The strengthening reinforced area in the center of the shell in concert with Tama's heavy duty hardware make these models durable, roadworthy instruments.

Model No.	Shell	Number of Lug	Type of Lug	Strainer	Hoops	Snares	Heads
PM323	3 1/4 x 14 Brass	20	Two-way Piccolo	Cam-lever	Steel Mighty	Sensitive	WK Coated/WK Clear
PM325	5 x 14 Brass	10	Two-way	Cam-lever	Steel Mighty	Sensitive	WK Coated/WK Clear
PM326	6 1/2 x 14 Brass	10	Two-way	Cam-lever	Steel Mighty	Sensitive	WK Coated/WK Clear
PM328	8 x 14 Brass	10	Two-way	Cam-lever	Steel Mighty	Sensitive	WK Coated/WK Clear

PM328 8 x 14

The PM328 was created for the drummer who needs the brilliance and initial attack of brass but wants to retain the full sound of an eight inch drum. The ideal drum for road or studio use and an excellent choice for the Rock drummer.

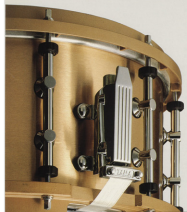


POWERMETAL SERIES

BELL-BRASS
SNARE DRUM



Tama was the first company to market a commercially available bell-brass snare drum. Due to its high resonance characteristics and long sustain, bell-brass is used in the manufacture of musical instruments such as cymbals where these qualities are desired. Another very important characteristic of bell-brass is its low fundamental frequency, when milled down to a 3mm thickness the result is a drum with an extraordinary clarity and power.



PM423 3 1/4 x 14

The low frequency fundamental pitch of bell-brass combined with the crispness and attack of a piccolo size shell yields a totally unique snare drum sound. The PM423 features lugs specially designed for the piccolo drum, Nylon Rod Locks for tuning stability, a new strainer design and a tension knob set on the upper part of the strainer for easy access.



PM426 6 1/2 x 14

The classic Tama Bell-Brass snare drum is enhanced by hardware improvements such as a Cam-Lever strainer and a Two-Way tuning lug, both of these features increasing this drum's acclaimed resonance.

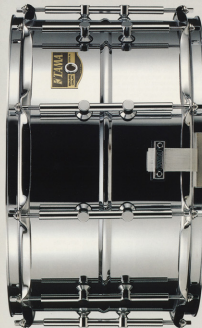
Both the PM423 and PM426 come with our new Bell-Brass Hoop as standard equipment. This hoop was developed for rigidity, tuning accuracy and louder, more explosive rim shots than any other snare drum rim.

Model No.	Shell	Number of Lug	Type of Lug	Strainer	Hoops	Snare	Hoops	Finish
PM423	3 1/4 x 14 Bell-Brass	20	Two-way Piccolo	Cam-lever	Bell-Brass	Sensitive	WK Coated/WK Clear	Chrome
PM426	6 1/2 x 14 Bell-Brass	10	Two-way	Cam-lever	Bell-Brass	Sensitive	WK Coated/WK Clear	Chrome

This snare series features a 1.1mm shell that has been meticulously crafted and edged for perfect roundness. A center lug is placed on the shell for additional strength that easily deals with the stress from heavy duty playing and mounting hardware. Four sizes, from 3 1/4" to 8", are available.



POWERMETAL SERIES
STEEL
SNARE DRUM



PM228 8 x 14

The 8" deep PM228 snare drum produces a sound of unsurpassed power. Equipped with Two-Way pipe lugs and Cam-Lever strainers, both designed to minimize shell surface contact so that nothing gets in the way of the PM228's incredible sonic strength.



PM223 3 1/4 x 14

PM225 5 x 14

PM226 6 1/2 x 14

Tama offers four sizes in its PM steel snare series: 3 1/4", 5", 6 1/2" and 8". Both the PM225 and the PM226 snare the specifications as the PM228, but specially designed for its piccolo depth. All feature beautifully chrome plated steel shells and mounting parts.

Model No.	Shell	Number of Lug	Type of Lug	Strainer	Hoops	Snare	Hoops	Finish
PM223	3 1/4 x 14 Steel	20	Two-way Piccolo	Piccolo	Steel Mighty	Sensitive	WK Coated/WK Clear	Chrome
PM225	5 x 14 Steel	10	Two-way	Cam-lever	Steel Mighty	Sensitive	WK Coated/WK Clear	Chrome
PM226	6 1/2 x 14 Steel	10	Two-way	Cam-lever	Steel Mighty	Sensitive	WK Coated/WK Clear	Chrome
PM228	8 x 14 Steel	10	Two-way	Cam-lever	Steel Mighty	Sensitive	WK Coated/WK Clear	Chrome

HOOPS

BELL-BRASS



MBH14-10B6/ Bell-Brass Hoop for batter side(6mm hole)
MBH14-10S6/ Bell-Brass Hoop for snare side(6mm hole)
MBH14-10B8/ Bell-Brass Hoop for batter side(8mm hole)
MBH14-10S8/ Bell-Brass Hoop for snare side(8mm hole)

Bell-brass is an alloy combining copper and tin in an 8:2 ratio. Due to its exceptional rigidity, it's the perfect hoop material. The other important quality of bell-brass is its superior resonance which enables the percussionist to produce explosive, penetrating rim shots.

STEEL MIGHTY



MFM14B6/ Steel Mighty Hoop for batter side(6mm hole)
MFM14S6S/ Steel Mighty Hoop for snare side(6mm hole)
MFM14S6L/ Steel Mighty Hoop for snare side(6mm hole, for Roller Action Strainer)

Many drummers have preferred the "low profile" of a triple flanged hoop but still needed the strength of a die-cast hoop. The development of Tama's Mighty Hoop now makes it possible to have a high strength rim with that desired triple flanged "low profile."

BRASS MIGHTY



MFB14B6 /Brass Mighty Hoop for batter side(6mm hole)
MFB14S6S/Brass Mighty Hoop for snare side(6mm hole)
MFB14B8 /Brass Mighty Hoop for batter side(8mm hole)
MFB14S8S/Brass Mighty Hoop for snare side(8mm hole)
 Note: This snare side hoop is not available for Roller Action Strainer.

Brass is used in this model of the Mighty Hoop for stronger highs and visual impact.

DIE-CAST



MDH14-10B6/ Die-cast Hoop for batter side(6mm hole)
MDH14-10S6/ Die-cast Hoop for snare side(6mm hole)
MDH14-10B8/ Die-cast Hoop for batter side(8mm hole)
MDH14-10S8/ Die-cast Hoop for snare side(8mm hole)

Our die-cast hoops are perfectly even and flat on the underside, even at the eyelets for increased tuning accuracy. Die-cast hoops are sturdily constructed to resist warpage and because of their straight edge are particularly good for rim shots.

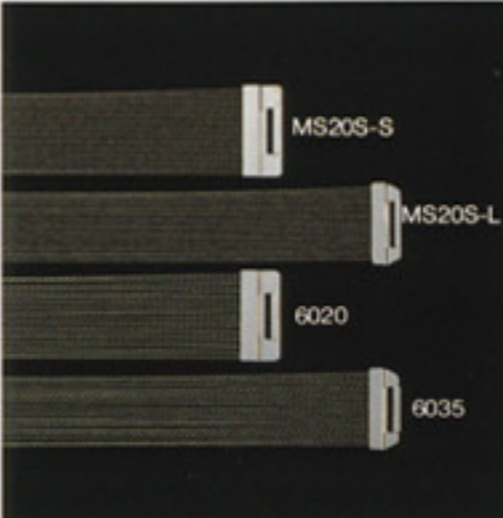
KEY WRENCHES



MKW33 6560

Both Tama's standard 6560 tuning key and the MKW33 3-way PAT30 key are die-cast for sturdy reliability and shaped to be easy and comfortable to handle. In addition, the PAT30 key allows the drummer to make different kinds of adjustments with just one key—no more on the job groping for screw-drivers and other tools.

SNAPPY SNARES



MS20S-S
 Steel Sensitive snares, short scale, 20 strands
MS20S-L
 Steel Sensitive snares, long scale, 20 strands
6020
 Steel snares, short scale, 20 strands
6035
 Steel snares, long scale, 18 strands

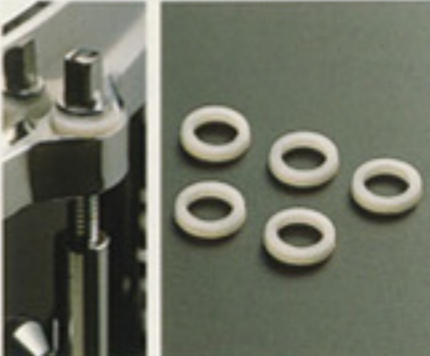
NYLON ROD LOCKS

MTL-LN for Two-way lug
MPL-LNU for PAT30 lug(batter side)
MPL-LNL for PAT30 lug(snare side)



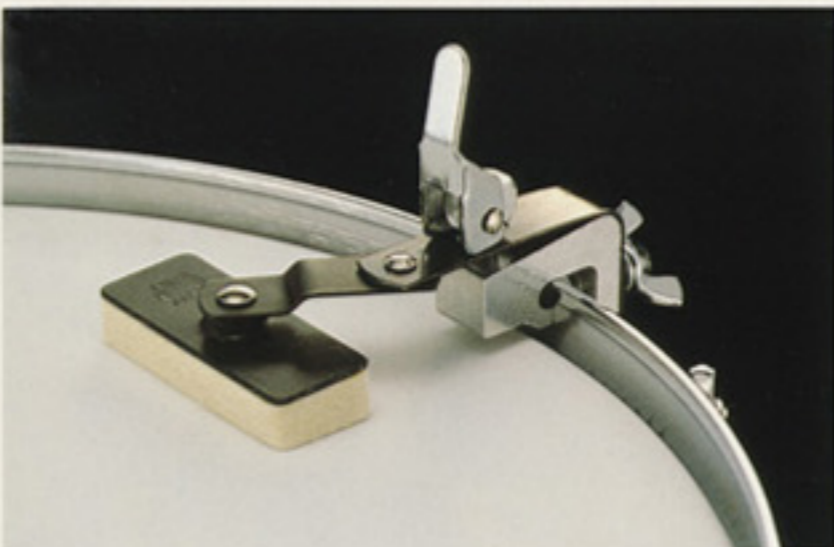
Nylon Rod Locks were designed to prevent unwanted loosening of the tension rods and are available in two styles; one for Two-Way Lugs and one set for the upper and lower locks of the PAT30 Lug.

NYLON WASHERS



MPL-PW8
 No detail is too small to consider when it comes to eliminating unwanted noise in a drum. The replacement of metal washers with nylon is one more step in the development towards a totally noise-free instrument. Available for any model drum wherever washers are required.

EXTERNAL MUFFLER



6553
 In keeping with the our standard of not compromising drum sound by burdening the shell with unnecessary hardware, Tama snare drums are made without internal mufflers. The 6553 External Muffler leaves the shell to vibrate freely while still offering fully adjustable muffling capabilities.



TAMA DRUMS ARE SOLD AND SERVICED BY

TAMA[®]

