

We'll take  
care of it.



**CardinalHealth**<sup>™</sup>  
OPTIFREIGHT<sup>®</sup> LOGISTICS

# Instant savings.

## It's that fast.

---

Immediately start saving on shipping. Due to our scale, we are able to provide better shipping rates than you could negotiate with national carriers on your own. Plus, with outbound shipments, we are here to advise you on the best way to ship so you can make the most cost-effective choice without sacrificing delivery time. Not a current Cardinal Health customer? Not a problem. Regardless of your distribution partner, we can help.

Based on all shipments through OptiFreight® Logistics from January 1 through December 31, 2016 compared to carrier list rates.



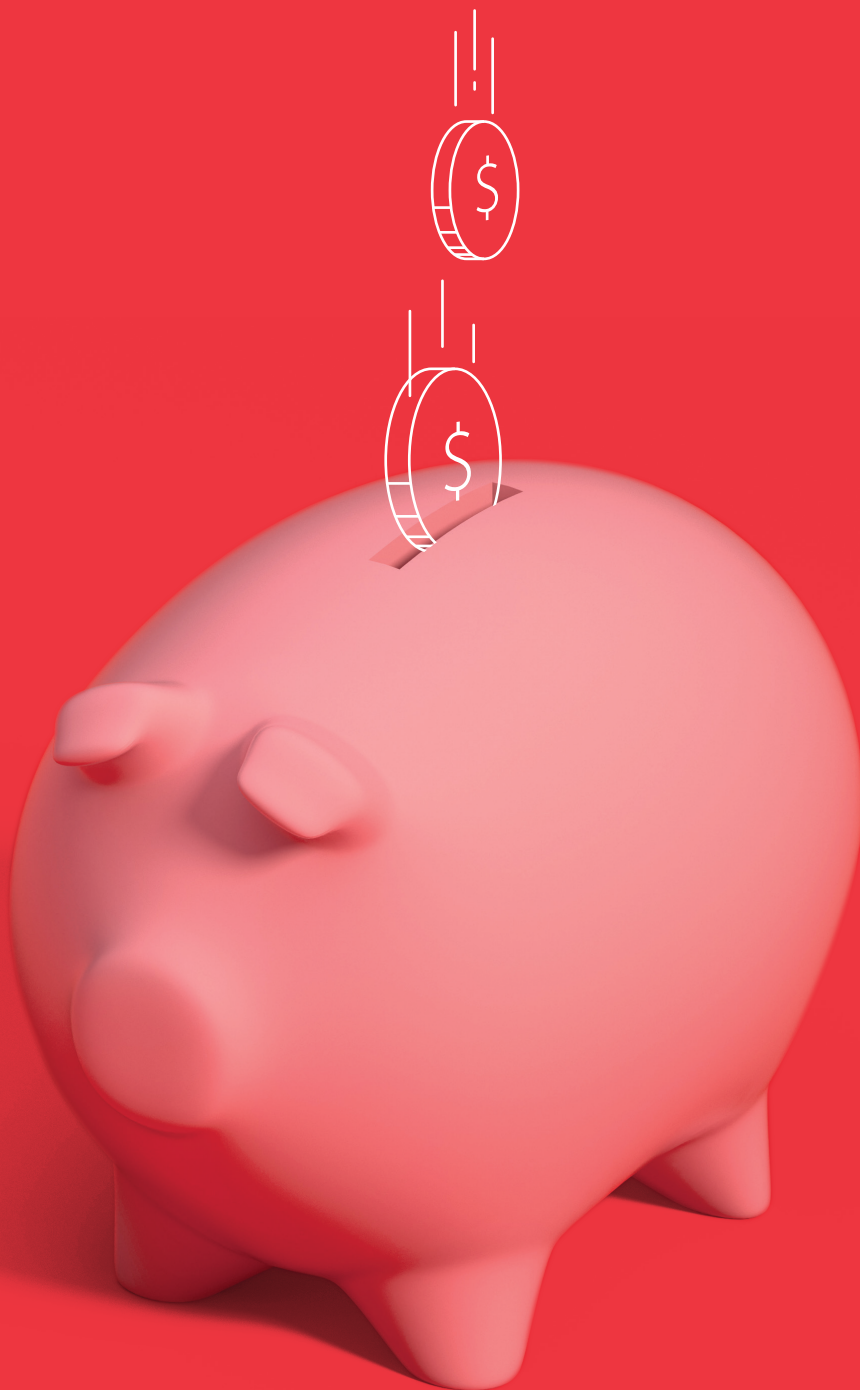
### **Best cost**

We'll use our strategic relationships with transportation providers to help make sure your shipment gets to the right place, at the right time, at the right cost.



### **Better payment terms**

We know that running a business means juggling costs. We give you 30 days to pay so you can make the best day-to-day choices for your pharmacy.



## **Lower shipping costs** on each shipment.

We've saved over \$340 million for more than  
30,000 healthcare facilities, putting money back into their business.

# Industry expertise.

## It's that straightforward.

---

Experience enhanced account management with one-on-one customer service support. That means no 1-800 numbers, no long hold times, and dedication to resolving shipping issues quickly so you can focus on patient care. Plus, we are able to leverage our size to get your national carrier shipping issues resolved faster than you could on your own.

It starts before you officially become an OptiFreight® Logistics customer with an analysis of past invoices. We'll highlight shipping efficiencies and opportunities to save before assigning you to one of our account managers. And if you need anything else, we'll only be a phone call away.



### **The Experts**

OptiFreight® Logistics is a leader in healthcare freight management, applying everything we know for outbound and inbound shipments.



### **Well-Rounded**

We have extensive experience working with pharmacies, but it's our industry understanding of multiple healthcare channels that gives us a comprehensive approach to logistics—and gives you the best shipping options available.

**Countless ways  
to get from A to B.**

**1**

**personal account  
manager to help  
you figure it out**



# Well-organized information. It's that effortless.

---

We may be the experts, but you're in charge. And we know that in order to make the best decisions for your pharmacy, clear data and insightful analytics are crucial. With detailed, searchable invoices and customized reporting, we'll give you the tools to stay informed and up-to-date with all your shipping costs to get a clear understanding of every shipping and handling charge.



## **Tracking and managing freight costs**

We'll help you stay organized and in control of your freight costs, with detailed reporting that helps you see the bottom line clearly.



## **Detailed reporting**

Through our national carrier provider, you will have the ability to retain proof of delivery for seven years.

The background of the entire advertisement is a repeating pattern of red and blue capsules. The capsules are arranged in a grid-like fashion, with red capsules being more numerous than blue ones. They are scattered across the white background, some horizontally and some vertically, creating a textured, medical-themed backdrop.

**More than**  
**17**  
**million**  
**shipments managed**  
**per year**

---

Another way to put it: over 17 million transactions with actionable insights to help you contain costs.

\*Based on all shipments through OptiFreight® Logistics from January 1 through December 31, 2016 compared to carrier list rates.

# No hidden costs.

## It's that clear.

---

When we say there's no cost to participate, we mean it. No surprise fees, no hidden expenses. Plus, we can help streamline your shipping process through an easy implementation, meaning you can continue to focus on things that matter. To keep things even more transparent, we'll set you up with an online portal for clear visibility into your shipping activity, including shipping and handling charges.



### **Real-time access**

Through easy-to-use tools in our online portal, you can take advantage of real-time advice via your account manager to make smarter shipping decisions and to get the best rates.



### **Stay in control**

You determine how you want to ship by choosing from a multitude of options to best meet your needs. We can integrate with your pharmacy system, set you up on our shipping portal or our national carrier partner site.





# Total transparency

Get the full view of your shipping costs  
and see exactly what you're paying for.

# Door-to-door delivery.

## It's that direct.

---

Whether you're sending small orders or large freight, we can meet your shipping needs. With our large network of shipping and logistical support, we'll give you a wide range of options to help make sure your delivery is prompt and punctual, and satisfies the needs of your clients or patients.



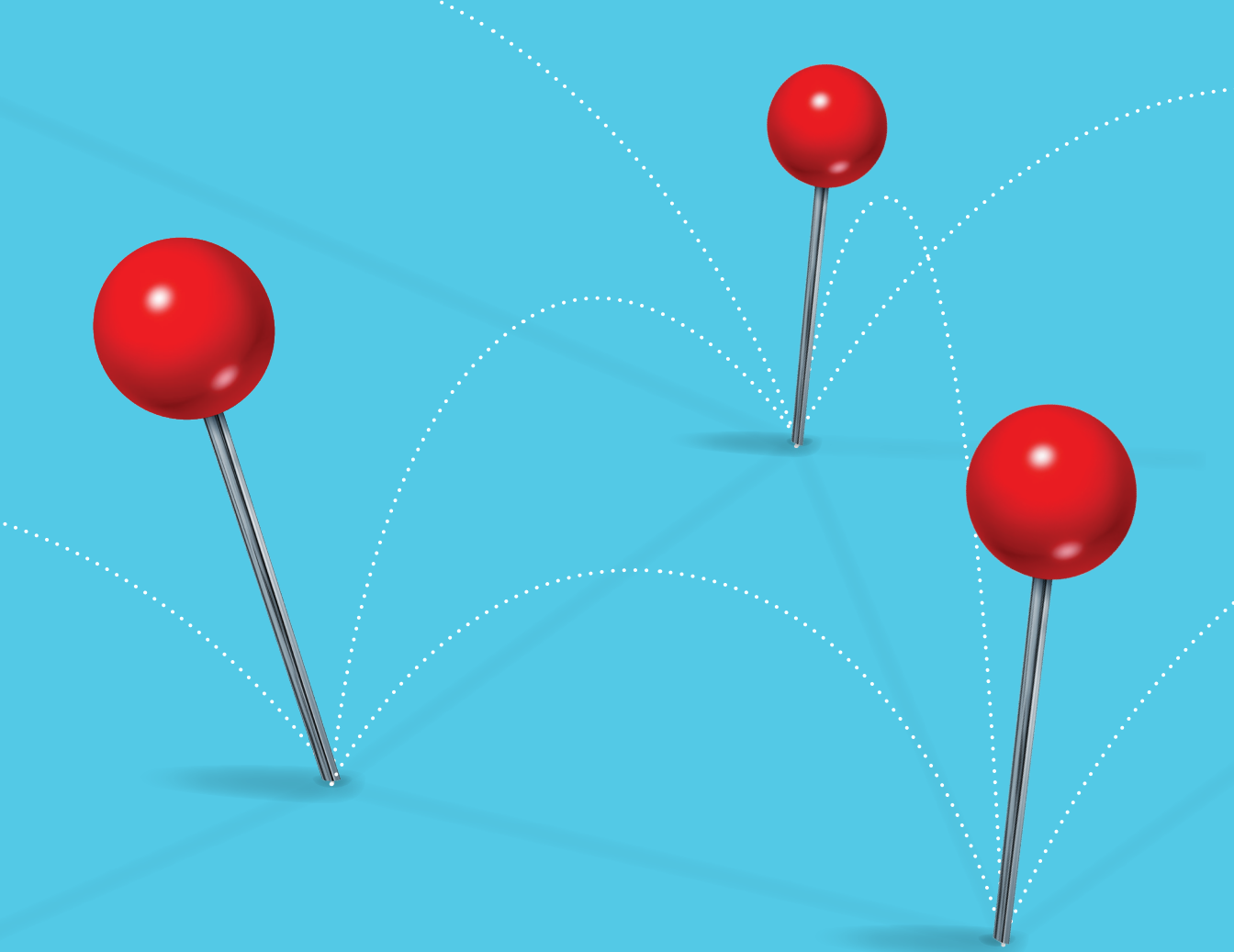
### **Residential and Business: Small Parcel**

Express, ground and home delivery services that include Saturday delivery, evening delivery, dry ice, signature options, email confirmations and more.



### **Business: Large Freight**

Multiple truckload and less-than-truckload carriers with a wide range of additional services.



Over  
**\$340**  
million  
**saved annually\***

We'll help you streamline your process  
to make it simpler and more affordable,  
no matter where you're shipping.

\*Based on all shipments through OptiFreight® Logistics from January 1 through December 31, 2016 compared to carrier list rates.

## **It's easy to get started:**

Just get in touch with us and we'll go over details, answer any questions, and show you how we can start to simplify and streamline your shipping.

---

### **How can we help?**

[OptiFreight-Pharmacy@cardinalhealth.com](mailto:OptiFreight-Pharmacy@cardinalhealth.com)