

DFL-xxx Setup for BigPond Cable with BPA Login

This guide has been provided to help BigPond cable users connect to the BigPond network and simulate the Heartbeat on your network.

Please find that we will need the following before we can continue:

- BPA Login software from SourceForge, can be found here: <http://bpalogin.sourceforge.net/>
- This Guide

Now that we have the necessities we can continue with the setup. Please connect the cable modem to the WAN port on the router and a network cable to your PC.

It should be as below:

CABLE MODEM → WAN-ROUTER-LAN → COMPUTER'S NETWORK CARD

Once connected as shown above, we will need to setup a Static IP address on your PC. Do the following to set this up:

- **Windows 98/ME:**

Start > Settings > Control Panel > Network > TCP/IP (Network Card) > Properties
From here we will need to setup your IP addressing, please enter it as below:

IP: 192.168.0.2

SUBNET MASK: 255.255.255.0

GATEWAY: 192.168.0.1

DNS: get the DNS addresses from Telstra or here: <http://www.ozcableguy.com/dns.html>

Now apply these settings, reboot your PC and continue below:

- **Windows 2000/XP:**

Start > Control Panel > Network Connections > Local Area Connection > Properties > TCP/IP
From here we will need to setup your IP addressing, please enter it as below:

IP: 192.168.0.2

SUBNET MASK: 255.255.255.0

GATEWAY: 192.168.0.1

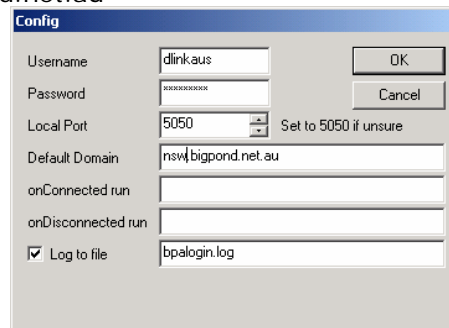
DNS: get the DNS addresses from Telstra or here: <http://www.ozcableguy.com/dns.html>

Now apply these settings and continue below:

Now that we have an IP address set on our PC we can setup a connection to Bigpond with BPA Login. Please make sure to follow the next few steps carefully.

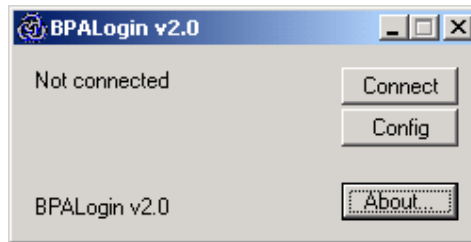
1. Uninstall or disable the Bigpond login software because you will be using BPA Login instead.
2. Install BPA Login as a Standard Program – this is essential in order to connect to the net.
3. Start BPA Login.
4. Enter the configuration as shown below:
(make sure that you enter the correct state into the domain field, e.g. nsw, qld, wa, vic, etc...)

Username: Your BigPond username
Password: Your BigPond password
Local Port: 5050
Default Domain: nsw.bigpond.net.au

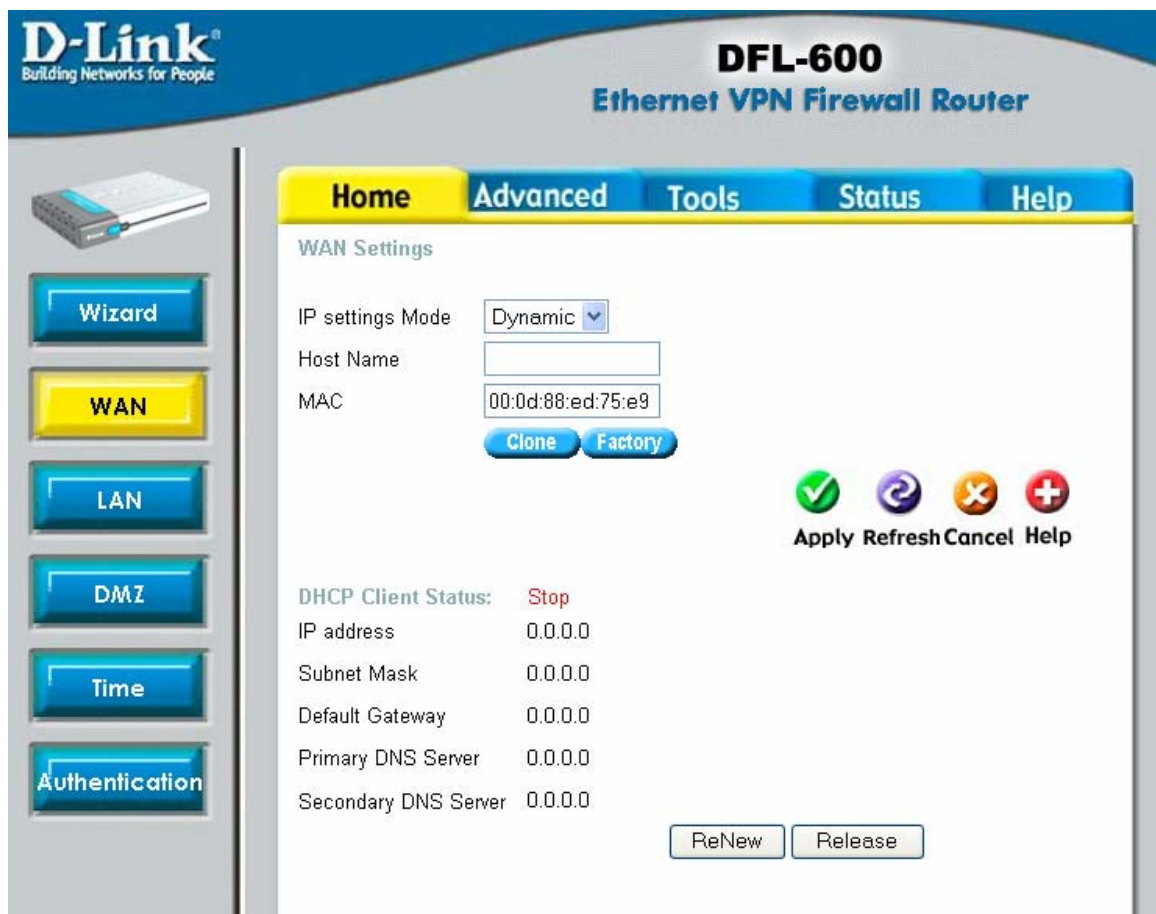


Username	dlink.aus	OK
Password	*****	Cancel
Local Port	5050	Set to 5050 if unsure
Default Domain	nsw.bigpond.net.au	
onConnected run		
onDisconnected run		
<input checked="" type="checkbox"/> Log to file	bpalogin.log	

4. Now click OK to save your configuration.
5. You will now return to this screen, just minimise this for now.



6. Now that the BPA Login software is setup we will need to setup the router to forward the Telstra Heartbeat to the PC we have just configured.
7. You will now need to login to the router using the password and username that has been specified, or the defaults if left untouched. Start your Internet browser (ensure that any proxy settings are disabled. In Internet Explorer: look under Tools > Internet Options > Connection > LAN Settings). Then type the IP address of the router (the default IP address is 192.168.0.1) into the Location (for Netscape) or Address (for IE) field and press "Enter". For example: http://192.168.0.1. After the connection is established, you will see the web interface of the router. To log in, enter the Username as "admin" and Password as "admin".
8. Now go to Home > WAN, in this page setup as below. Select Dynamic under "IP settings Mode":



9. One thing that you may need to do is the cloning of your PC's MAC address. This is what Telstra will assign an IP to. If you have the wrong MAC address you will be unable to connect. This MAC address must be from the PC that was originally setup and working with the cable modem.
10. The next step is to setup the port redirections for the Telstra Heartbeat, this will be going to the PC we have just setup up. Please see an example configuration below:

Private IP: 192.168.0.2
 Protocol Type: UDP
 Port Number: 5050

D-Link
Building Networks for People

DFL-600
Ethernet VPN Firewall Router

Home **Advanced** Tools Status Help

Virtual Server / [Application\(ALG\)](#)

Add Virtual Server Mapping

Private IP address: 192.168.0.2
 Transport Type: [v]
 Protocol: UDP [v]
 Port Number: 5050

Note: Remember to modify the related firewall rules after a virtual server item is added / deleted.

Apply Cancel Help

Total No. of Entries: 4 / 8

Private IP address	Protocol Type	Port Number	Delete
192.168.0.2	UDP	5050	[x]
192.168.0.3	UDP	5051	[x]

11. Now that all of the redirections are done we can now get an IP address of Telstra. This is done by going to the Status page and then clicking on DHCP Renew. You should get something similar to what is below:

D-Link
Building Networks for People

DFL-600
Ethernet VPN Firewall Router

Home Advanced Tools **Status** Help

Device Information

Device Name: DFL-600
 Hardware Version: 2A1
 Firmware Version: 1.05.b091
 Kernel Version: 1.10
 Driver Version: 1.30

LAN

MAC Address: 00:0d:88:ed:75:e8
 IP address: 192.168.0.225
 Subnet Mask: 255.255.255.0
 DHCP Server: Enabled

WAN

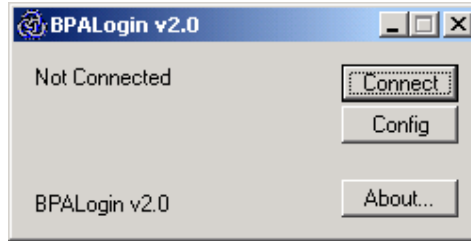
MAC Address: 00:0d:88:ed:75:e9
 Connection Type: Dynamic IP Address
 IP address: 202.129.109.66
 Subnet Mask: 255.255.255.224
 Default Gateway: 202.129.109.65
 Primary DNS Server: 202.129.64.198
 Secondary DNS Server: 139.134.5.51

DMZ

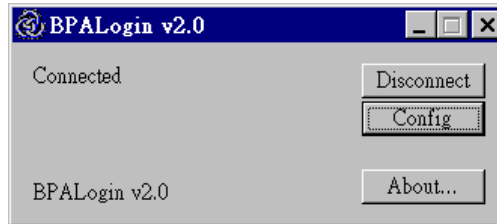
IP address: 192.168.1.1
 Subnet Mask: 255.255.255.0

Help

12. Now that the router setup is complete we now need to connect to Telstra via BPA Login. This is done by opening up the BPA Login program that we minimised earlier and clicking on the "Connect" button.



13. This should now say "Connected" and display the blue icon in the system tray without the red exclamation mark through it. This will indicate that you are connected.



14. You should now be able to open your Internet browser and open a favourite or go to a web address.

You can install BPALogin on other computers and configure it to use different port numbers: 5051, 5052, etc. Note that you will need to add additional port redirection rules in your router as described above.

Happy browsing.

Regards,
Technical Support
D-Link Australia