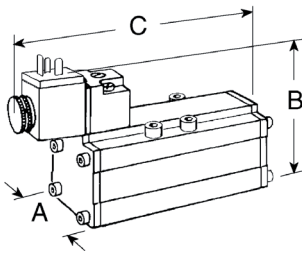
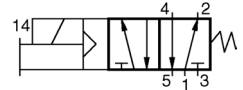


W60 Spool & Sleeve Valves for ISO Bases (5599/I)

5/2 Valves – Single Solenoid Pilot Spring Return

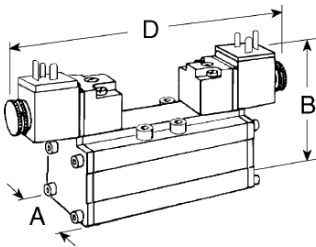


ISO-Size	Avg. k_v	Manual Override	Valve-Model-No.*
1	0,7	Non-locking Locking	W6076B2401 W6076B2411
2	1,7	Non-locking Locking	W6076B3401 W6076B3411
3	3,3	Non-locking Locking	W6076B4401 W6076B4411
4	3,6	Non-locking Locking	W6076B5401 W6076B5411

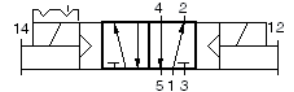


* Base and electrical connector not included.

5/2 Valves – Double Solenoid Pilot Momentary Control

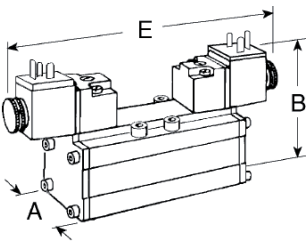


ISO-Size	Avg. k_v	Manual Override	Valve-Model-No.*
1	0,7	Non-locking Locking	W6076B2407 W6076B2417
2	1,7	Non-locking Locking	W6076B3407 W6076B3417
3	3,3	Non-locking Locking	W6076B4407 W6076B4417
4	3,6	Non-locking Locking	W6076B5407 W6076B5417

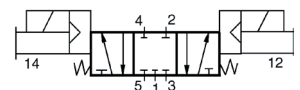


* Base and electrical connector not included.

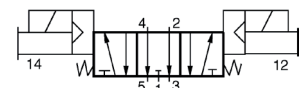
5/3 Valves – Double Solenoid Pilot



ISO-Size	Avg. k_v	Manual Override	Valve-Model Number*	
			Closed Center	Open Center
1	0,7	Non-locking Locking	W6077B2401 W6077B2411	W6077B2407 W6077B2417
2	1,7	Non-locking Locking	W6077B3401 W6077B3411	W6077B3407 W6077B3417
3	3,3	Non-locking Locking	W6077B4401 W6077B4411	W6077B4407 W6077B4417
4	3,6	Non-locking Locking	W6077B5401 W6077B5411	W6077B5407 W6077B5417



CLOSED CENTER



OPEN CENTER

* Base and electrical connector not included.

DIMENSIONS mm

ISO	A	B	C	D	E
1	42	82	137	175	170
2	53	90	160	192	195
3	65	94	160	172	172
4	76	94	175	190	190

STANDARD SPECIFICATIONS: For valves on this page.

Solenoids: AC or DC power.

Power Consumption: 10,9 VA inrush, 8.5 VA holding on 50 or 60 HZ; 6 watts on d.c.

Ambient Temperature: 4° to 50° C.

Media Temperature: 4° to 80° C.

Flow Media: Filtered air. 5 micron recommended.

Inlet Pressure: Vacuum to 10 bar (16 bar on request).

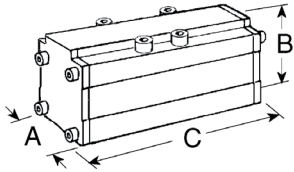
Pilot Pressure:

Size 1: At least 2 bar.

Size 2, 3 and 4: At least 1 bar.

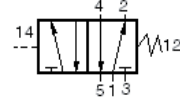
W60 Spool & Sleeve Valves for ISO Bases (5599/I)

5/2 Valves – Single Pressure Control Spring Return

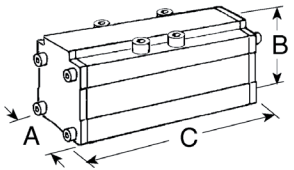


ISO-Size	Avg. k_v	Valve-Model-No.*
1	0,7	W6056B2411
2	1,7	W6056B3411
3	3,3	W6056B4411
4	3,6	W6056B5411

* Base not included..

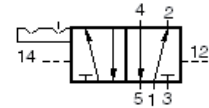


5/2 Valves – Double Pressure Momentary Control

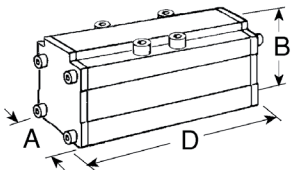


ISO-Size	Avg. k_v	Valve-Model-No.*
1	0,7	W6056B2417
2	1,7	W6056B3417
3	3,3	W6056B4417
4	3,6	W6056B5417

* Base not included.

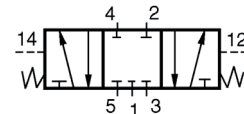


5/3 Valves – Double Pressure Control

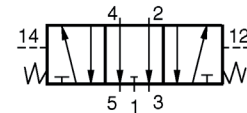


ISO-Size	Avg. k_v	Valve-Model Number*	
		Closed Center	Open Center
1	0,7	W6057B2411	W6057B2417
2	1,7	W6057B3411	W6057B3417
3	3,3	W6057B4411	W6057B4417
4	3,6	W6057B5411	W6057B5417

* Base not included.



CLOSED CENTER



OPEN CENTER

DIMENSIONS mm

ISO	A	B	C	D
1	42	47	105	107
2	53	54	126	135
3	65	59	152	158
4	76	59	160	160

STANDARD SPECIFICATIONS: For valves on this page.

Ambient Temperature: 4° to 80° C.

Media Temperature: 4° to 80° C.

Flow Media: Filtered air. 5 micron recommended.

Inlet Pressure: Vacuum to 10 bar (16 bar on request).

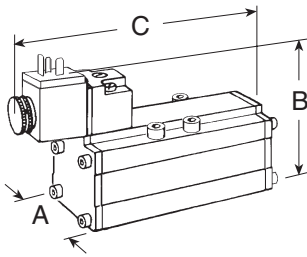
Pilot Pressure:

Size 1: At least 2 bar.

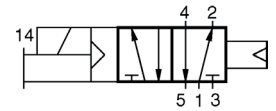
Size 2, 3 and 4: At least 1 bar.

W63 Resilient Seal Spool Valves for ISO Bases (5599/I)

5/2 Valves – Single Solenoid Pilot Air Return

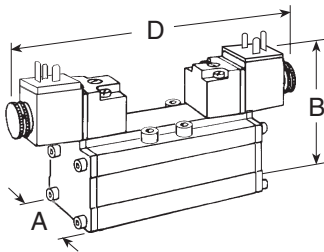


ISO-Size	Avg. k_v	Manual Override	Valve-Model-No.*
1	0,7	Non-locking Locking	W6376S2401 W6376S2411
2	1,7	Non-locking Locking	W6376S3401 W6376S3411
3	3,3	Non-locking Locking	W6376S4401 W6376S4411

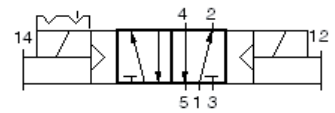


* Base and electrical connector not included.

5/2 Valves – Double Solenoid Pilot Momentary Control

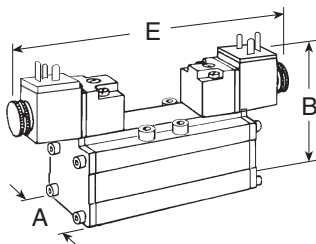


ISO-Size	Avg. k_v	Manual Override	Valve-Model-No.*
1	0,7	Non-locking Locking	W6376S2407 W6376S2417
2	1,7	Non-locking Locking	W6376S3407 W6376S3417
3	3,3	Non-locking Locking	W6376S4407 W6376S4417

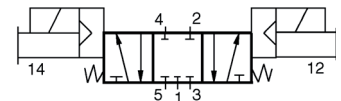


* Base and electrical connector not included.

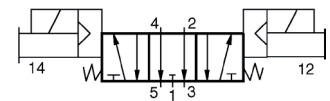
5/3 Valves – Double Solenoid Pilot



ISO-Size	Avg. k_v	Manual Override	Valve-Model Number*	
			Closed Center	Open Center
1	0,7	Non-locking	W6377S2401	W6377S2407
		Locking	W6377S2411	W6377S2417
2	1,7	Non-locking	W6377S3401	W6377S3407
		Locking	W6377S3411	W6377S3417
3	3,3	Non-locking	W6377S4401	W6377S4407
		Locking	W6377S4411	W6377S4417



CLOSED CENTER



OPEN CENTER

* Base and electrical connector not included.

DIMENSIONS mm

ISO	A	B	C	D	E
1	42	82	134	173	173
2	53	90	159	179	187
3	65	94	160	150	203

STANDARD SPECIFICATIONS: For valves on this page.

Solenoids: AC or DC power.

Power Consumption: 10,9 VA inrush, 8,5 VA holding on 50 or 60 Hz; 6 watts on d.c.

Ambient Temperature: 4° to 50° C.

Media Temperature: 4° to 80° C.

Flow Media: Filtered air. 5 micron recommended.

Inlet Pressure: Vacuum to 16 bar.

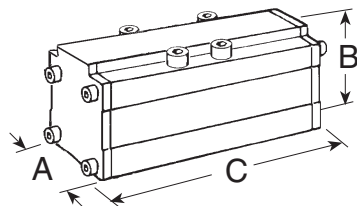
Pilot Pressure:

Size 1: At least 2 bar.

Size 2 and 3: At least 1 bar

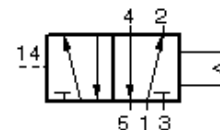
W63 Resilient Seal Spool Valves for ISO Bases (5599/I)

5/2 Valves – Single Pressure Control Air Return

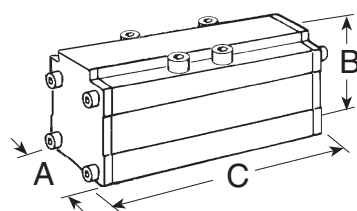


ISO-Size	Avg. k_v	Valve-Model-No.*
1	0,7	W6356S2411
2	1,7	W6356S3411
3	3,3	W6356S4411

* Base not included.

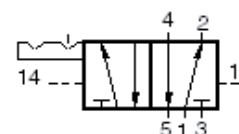


5/2 Valves – Double Pressure Control Momentary Control

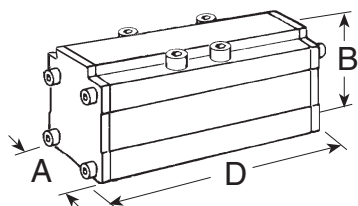


ISO Size	Avg. k_v	Valve-Model-No.*
1	0,7	W6356S2417
2	1,7	W6356S3417
3	3,3	W6356S4417

* Base not included.

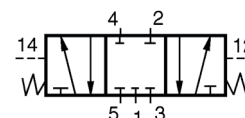


5/3 Valves – Double Pressure Control

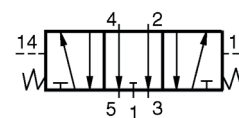


ISO Size	Avg. k_v	Valve-Model Number*	
		Closed Center	Open Center
1	0,7	W6357S2411	W6357S2417
2	1,7	W6357S3411	W6357S3417
3	3,3	W6357S4411	W6357S4417

* Base not included.



CLOSED CENTER



OPEN CENTER

DIMENSIONS mm

ISO	A	B	C	D
1	42	47	108	107
2	53	54	134	187
3	65	59	160	203

STANDARD SPECIFICATIONS: For valves on this page.

Ambient Temperature: 4° to 80° C.

Media Temperature: 4° to 80° C.

Flow Media: Filtered air. 5 micron recommended.

Inlet Pressure: Vacuum to 16 bar.

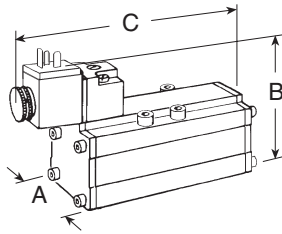
Pilot Pressure:

Size 1: At least 2 bar.

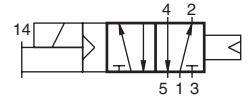
Size 2 and 3: At least 1 bar.

W64 Poppet Valves for ISO Bases (5599/I)

5/2 Valves – Single Solenoid Pilot Air Return

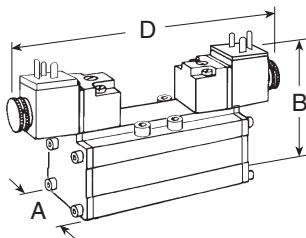


ISO Size	Avg. k_v	Manual Override	Valve-Model Number*	
			Std. Temp.	High Temp.
1	0,9	Non-locking	W6476B2401	W6476B2402
		Locking	W6476B2411	W6476B2412
2	1,7	Non-locking	W6476B3401	W6476B3402
		Locking	W6476B3411	W6476B3412
3	3,5	Non-locking	W6476B4401	W6476B4402
		Locking	W6476B4411	W6476B4412

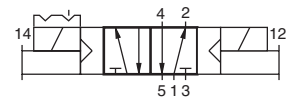


* Base and electrical connector not included.

5/2 Valves – Double Solenoid Pilot Momentary Control



ISO Size	Avg. k_v	Manual Override	Valve-Model Number*	
			Std. Temp.	High Temp.
1	0,9	Non-locking	W6476B2407	W6476B2408
		Locking	W6476B2417	W6476B2418
2	1,7	Non-locking	W6476B3407	W6476B3408
		Locking	W6476B3417	W6476B3418
3	3,5	Non-locking	W6476B4407	W6476B4408
		Locking	W6476B4417	W6476B4418



* Base and electrical connector not included.

DIMENSIONS mm

ISO	A	B	C	D
1	42	82	137	175
2	53	90	160	192
3	65	94	160	172

STANDARD SPECIFICATIONS: For valves on this page.

Solenoids: AC or DC power.

Power Consumption: 10,9 VA inrush, 8,5 VA holding on 50 or 60 Hz; 6 watts on d.c.

Ambient Temperature: 4° to 50° C; extended to 80° C for High Temperature models.

Media Temperature: 4° to 80° C; extended to 105° C for High Temperature models.

Flow Media: Filtered air. 5 micron recommended.

Inlet Pressure: 2-10 bar.

Pilot Pressure: Must be equal to or greater than inlet pressure.

ELECTRICAL CONNECTORS for ISO-VALVES

(According to DIN 43650 A, enclosure rating: IP 65.)

Power is supplied to the solenoids of ISO valves and certain other valves via connector such as the one shown below. These connectors are not supplied with the valves but must be ordered by the part numbers shown in the chart at the right.



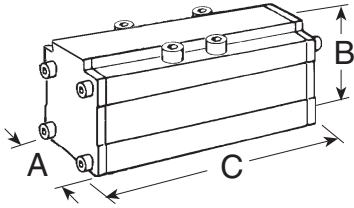
Wired connectors are available with 2 cords meters long and in either 6-mm or 10-mm diameters. Both are 3-conductor cords. Also available are connectors for use with threaded conduit instead of dropcords. All connectors are available with or without a built-in indicator light.

Connector	without Light*	with Light*
For use with dropcord (Cord not included)	937K87	936K87
Wired with 6-mm cord	721K77	720K77
Wired with 10-mm cord	371K77	383K77
For use with threaded conduit	723K77	724K77

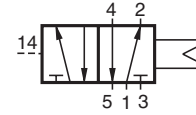
* Specify solenoid voltage.

W64 Poppet Valves for ISO Bases (5599/I)

5/2 Valves – Single Pressure Control Air Return

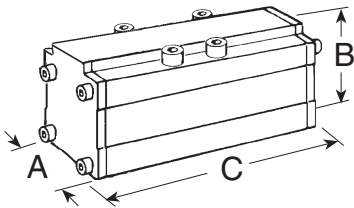


ISO Size	Avg. k_v	Valve-Model Number*	
		Std. Temp.	High Temp.
1	0,9	W6456B2411	W6456B2412
2	1,7	W6456B3411	W6456B3412
3	3,5	W6456B4411	W6456B4412

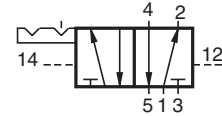


* Base not included.

5/2 Valves – Double Pressure Control Momentary



ISO Size	Avg. k_v	Valve-Model Number*	
		Std. Temp.	High Temp.
1	0,9	W6456B2417	W6456B2418
2	1,7	W6456B3417	W6456B3418
3	3,5	W6456B4417	W6456B4418



* Base not included.

DIMENSIONS mm

ISO	A	B	C
1	42	47	105
2	53	54	126
3	65	59	152

STANDARD SPECIFICATIONS: For valves on this page.

Ambient Temperature: 4° to 80° C.

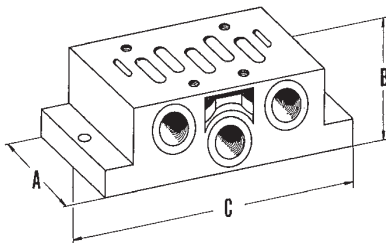
Media Temperature: 4° to 80° C; extended to 105° C for High Temperature models.

Flow Media: Filtered air. 5 micron recommended.

Inlet Pressure: 2 to 10 bar.

Pilot Pressure: Must be equal to or greater than inlet pressure.

SIDE-PORTED SUB-BASES FOR ISO-VALVES (VDMA 24345, Form A)



ISO Size	Port Size*	Model Number	Dimensions mm		
			A	B	C
1	G 1/4	D600C01	48	32	110
2	G 3/8	D601C01	57	40	124
3	G 1/2	D602C01	71	32	149
4	G 3/4	D654K01	85	42	186

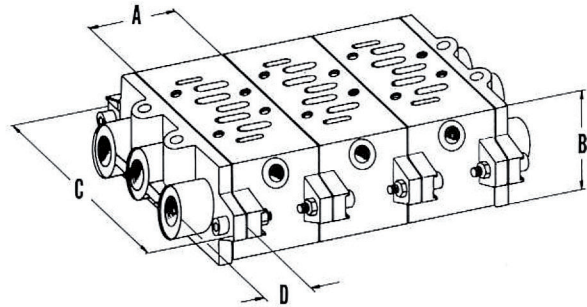
*External pilot supply port (14) and remote pilot ports (12 and 14): G 1/8.

BOTTOM-PORTED MANIFOLDS for ISO VALVES

VDMA 24345, Forms C and D

Hardware and seals for joining manifold stations are included with each station. An end station kit, which includes two end plates with threaded inlet and exhaust ports, must be ordered for each manifold installation. Pilot ports have G 1/8 threads.

Blocking discs are available for each of the four ISO sizes. Order by the numbers in the chart below.



ISO Size	Outlet Port	Manifold Station	Dimensions mm				End Station		Blocking Disc
			A	B	C	D	Kit Number	Inlet, Exh., Port Size	
1	G 1/4	D460K91	43	46	110	22	D326K86	G 3/8	235A40
2	G 3/8	D461K91	56	47	135	26	D327K86	G 1/2	236A40
3	G 1/2	D462K91	71	56	190	30	D328K86	G 1	237A40
4	G 3/4	D599K91	82	58	215	30	D368K86	G 1	-

ACCESSORIES for ISO VALVES

INTERPOSED FLOW CONTROLS (SERIES W60 Only)

Regulates the exhaust flow of air from a cylinder and thereby controls the speed of the cylinder. Separate controls allow speed of extension and retraction to be set independently. Order by the following part numbers:

ISO Size 1701B77
 ISO Size 2702B77
 ISO Size 3722K77

ADAPTORS for SIDE PORTING VDMA 24345, Form E

Adaptors for side porting mount beneath the manifold station and redirect the outlet pressures to side ports. Order by the following numbers:

ISO Size 1D324K86
 ISO Size 2D346K86
 ISO Size 3D325K86

INDEPENDENT PRESSURE PLATES

When a valve in a manifold installation must work at a different pressure than that supplied to the manifold, an independent supply can be provided via an independent pressure plate. The pressure plate is mounted between valve and base and isolates the valve from the manifold inlet pressure. The independent supply is connected to an inlet port in the end of the pressure plate. Order by the following numbers:

ISO Size 1D703K77
 ISO Size 2D692K77
 ISO Size 3D715K77
 ISO Size 4D989K77

INTERPOSED PRESSURE REGULATORS

When an individual valve must work at a lower pressure than that supplied to the manifold, a pressure regulator can be installed between valve and base to reduce the pressure supplied to the valve. No special piping required. Pressure can be regulated from 0.3 to 8.5 bar. Maximum inlet pressure 10 bar. Order by the following part numbers:

ISO Size 1697K77
 ISO Size 2693K77
 ISO Size 3707K77

BLANK STATION KITS

A blank station kit is used to cover the top of a manifold station that is not in use. The kit consists of a metal plate 8 mm thick, a gasket, and mounting bolts. Order by the following numbers:

ISO Size 1546H77
 ISO Size 2694K77
 ISO Size 3537H77

TRANSITION PLATES

Different size ISO valves can be used in the same manifold installation by means of transition plates. The ports of different size manifold stations are connected by means of a transition plate installed between the two stations. Order by the following numbers:

ISO 1 to ISO 2D355K86
 ISO 2 to ISO 3D356K86
 ISO 1 to ISO 3D357K86
 ISO 2 to ISO 4D370K86
 ISO 3 to ISO 4D371K86