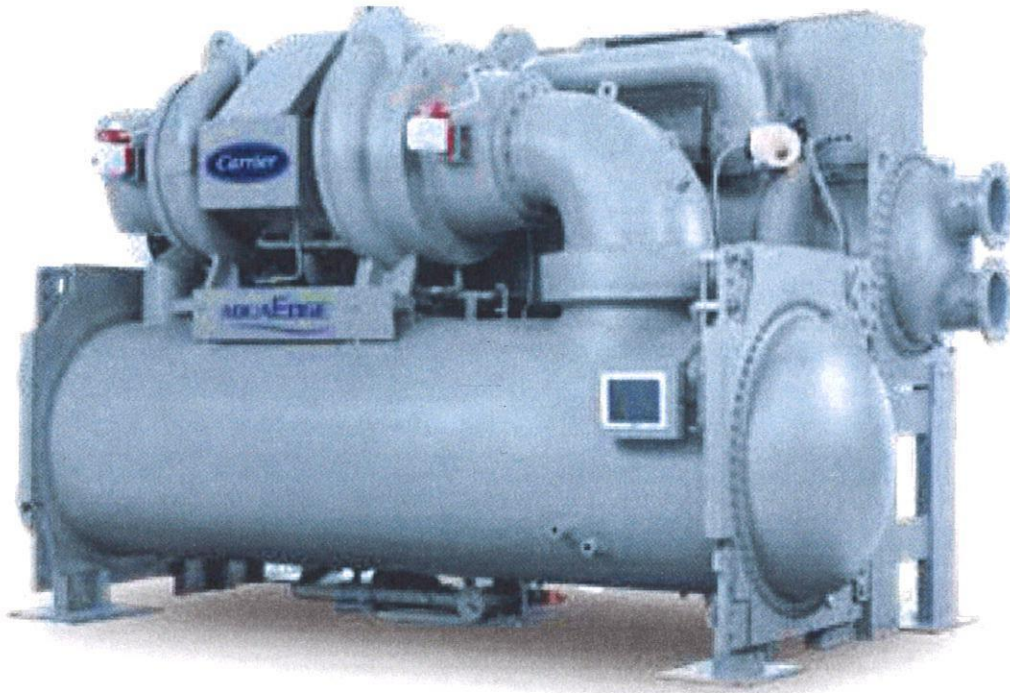


This service part guide includes information for the 19DV machines with frame #3 compressor with Frame E & F Vessels.



How To Use This Catalog

1. This Catalog Presents The Most Commonly Used Specified Replacement Parts For The Standard 19DV Centrifugal Refrigeration Machine And Is Not Applicable To Any Special Order Machines. (Contact Carrier With Machine Serial Number For Any Special Order Machine Parts.)
2. Occasionally, Due To Limitations Of Illustrations Used, A Part May Not Be Illustrated. These Parts Are Identified by "N" In The Column Next To The Item Number.
3. The Following Parts Are Not Listed In This Catalog:
 - A. Impellers, Shrouds, Diffusers
 - B. Compressor Motor (Rotor & Stator)
 - C. Evaporator Tube Part Number
 - D. Condenser Tube Part Number

If Any Of These Parts Are Required, Contact Your RCD Customer Service Representative With The Model Number And Serial Number Of Your Machine.

4. Positive Identification Of Your Machine To Properly Select Parts May Be Done By Referring To Machine Name Plate, See Significance Chart On Page #2 (Graphic 19092002)

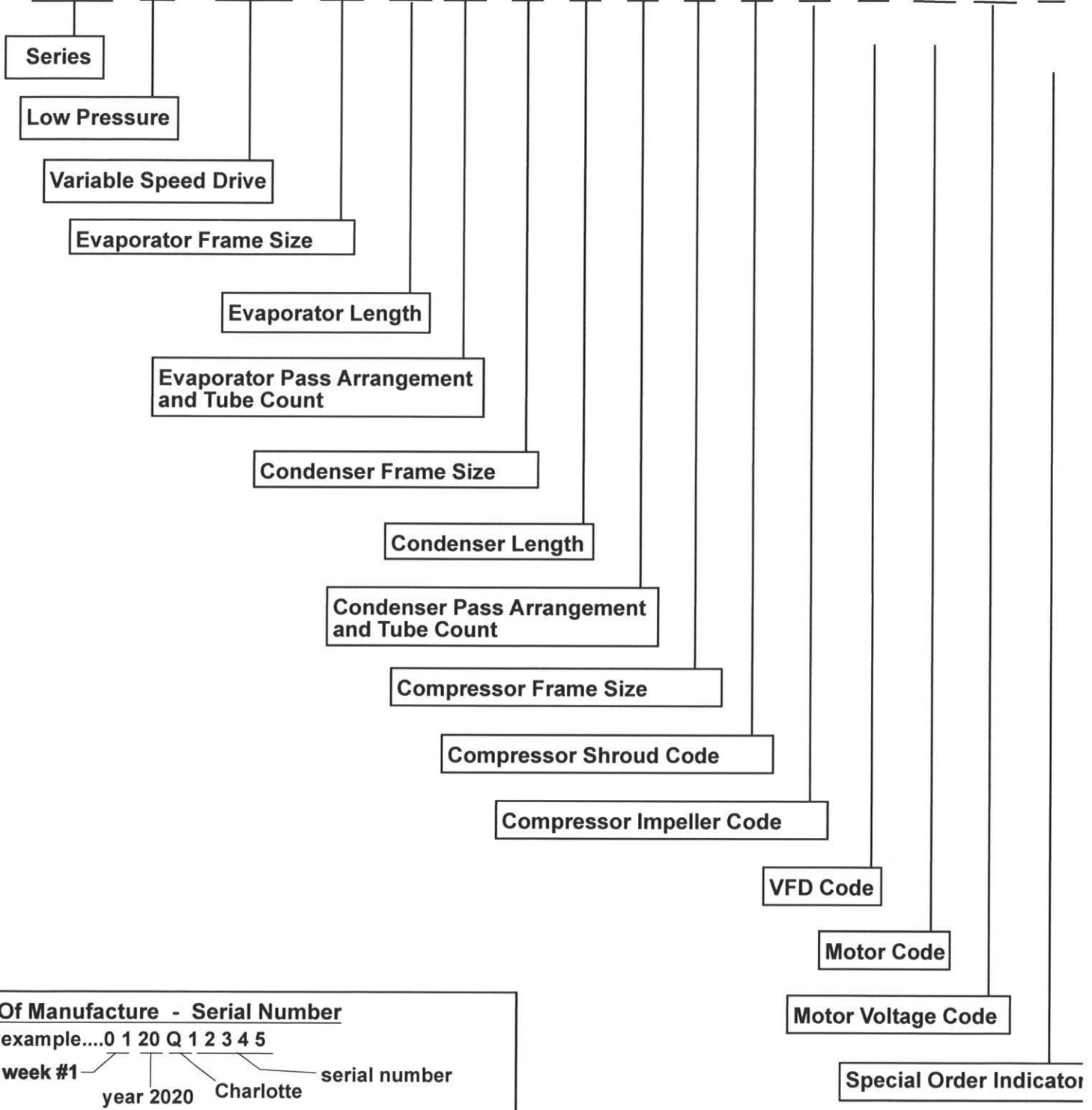


Centrifugal Chiller 19DV Frame #3 Compressor

19DV

Model Number Significance Chart

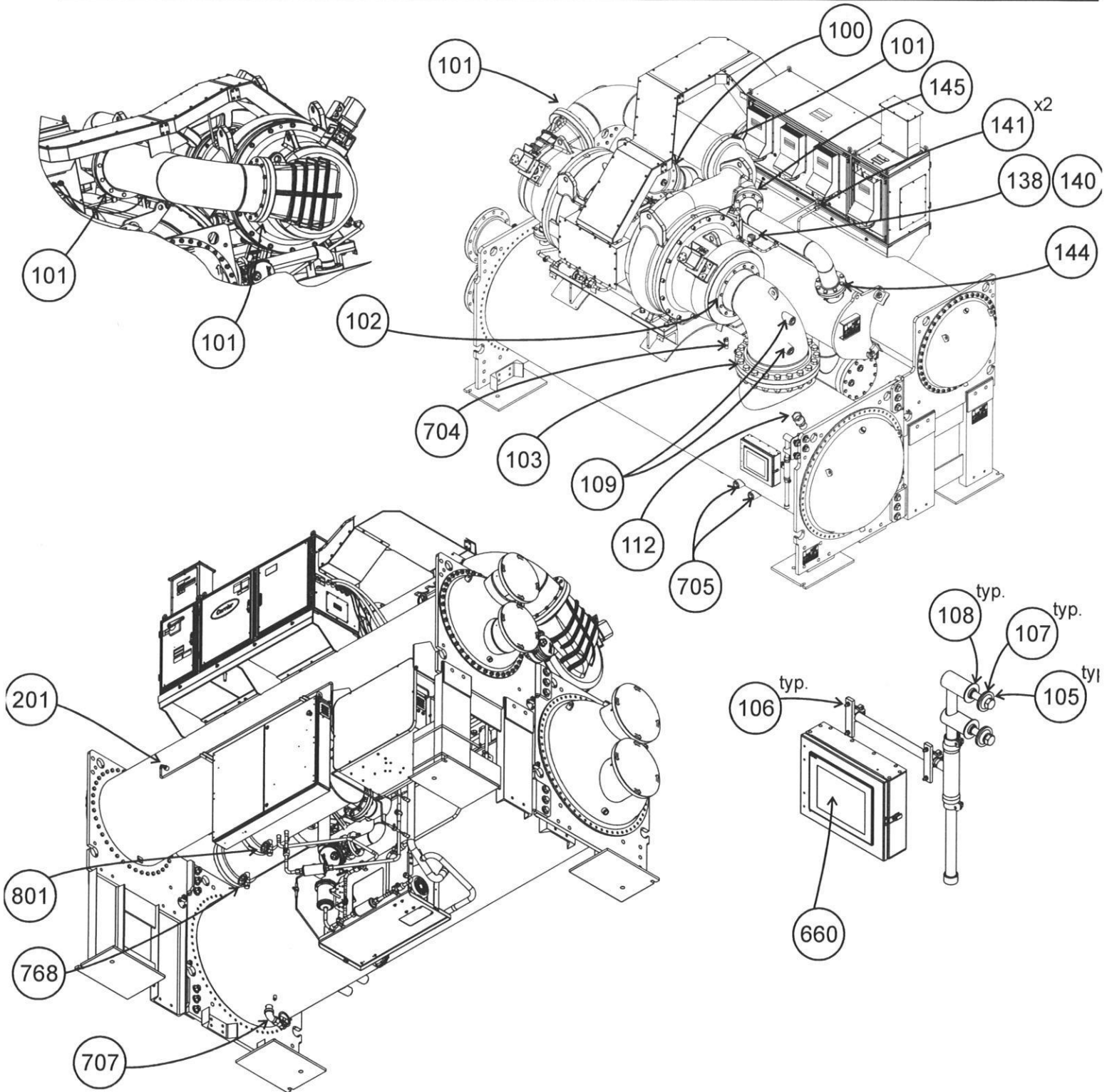
1 9 D V - G 4 4 G 4 4 4 5 2 5 H 4 -



Date Of Manufacture - Serial Number
 example...0 1 20 Q 1 2 3 4 5
 week #1 — year 2020 — Charlotte — serial number

Release Date: 03/21
 Catalog No: RCD-3519-092
 Supersedes: NEW
 Revision:
 Revision:

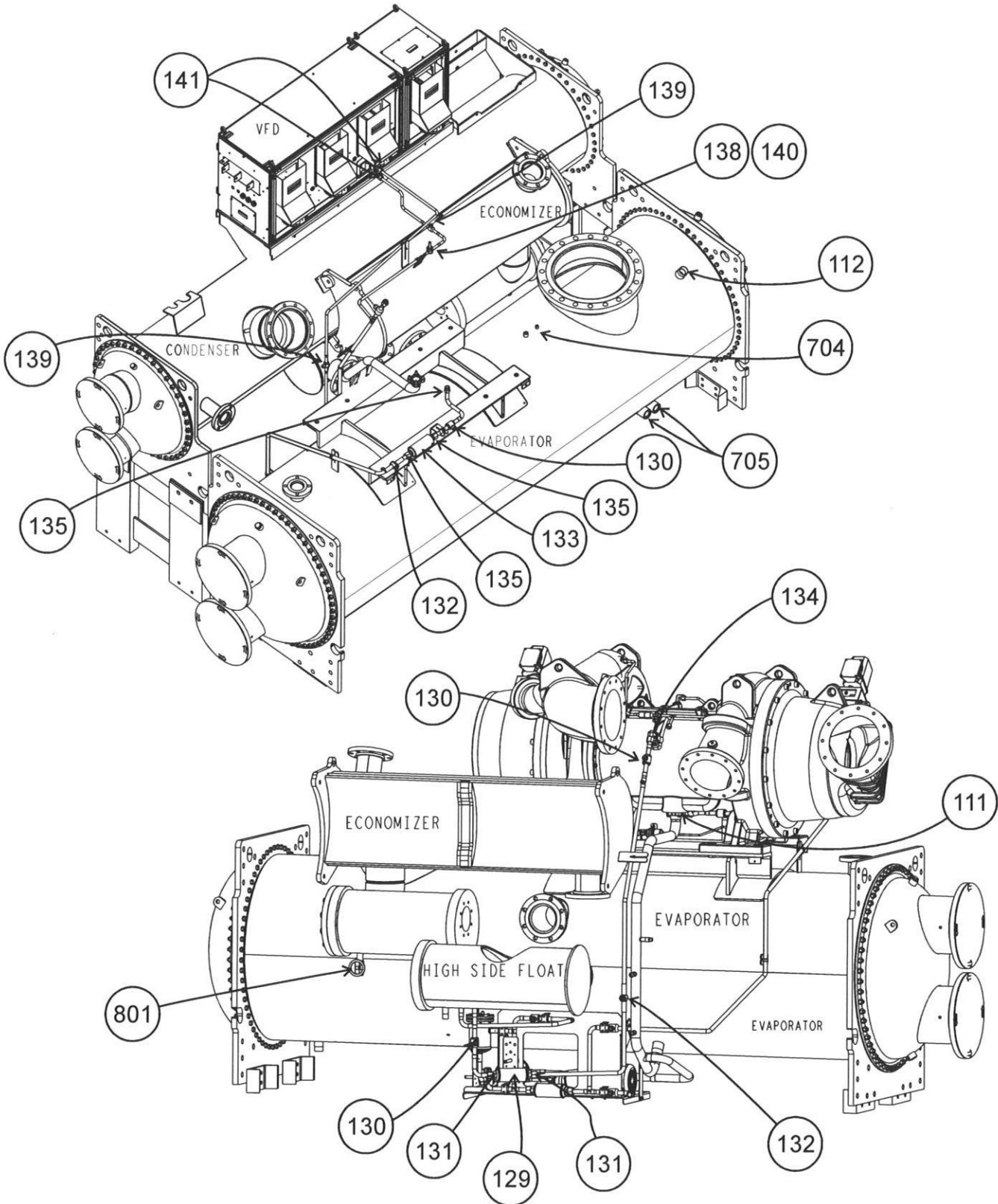




Release Date: 03/21
 Catalog No: RCD-3519-092
 Supersedes: NEW

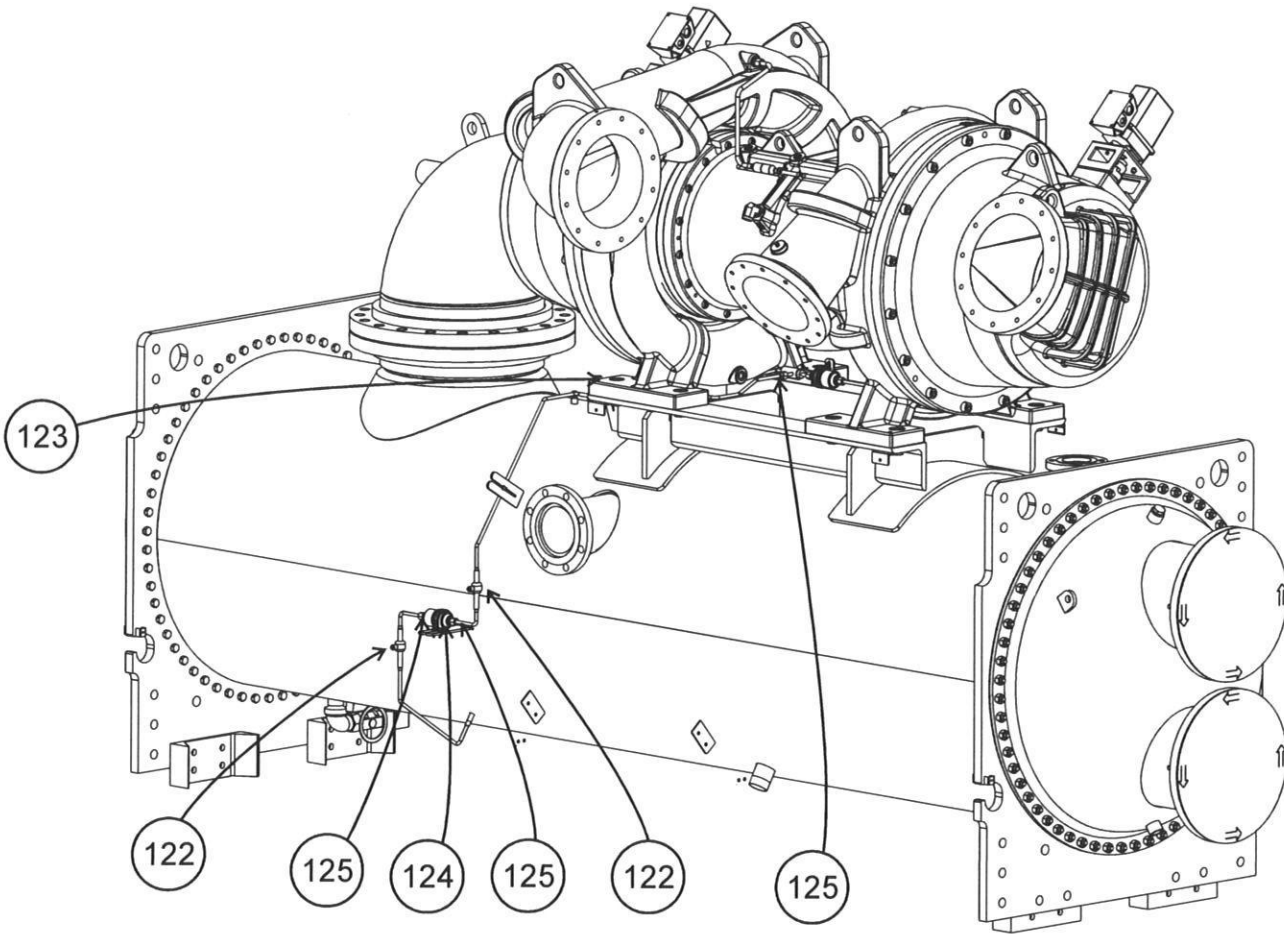
Revision:
 Revision:

Graphics Page: 3
 Litho in U.S.A



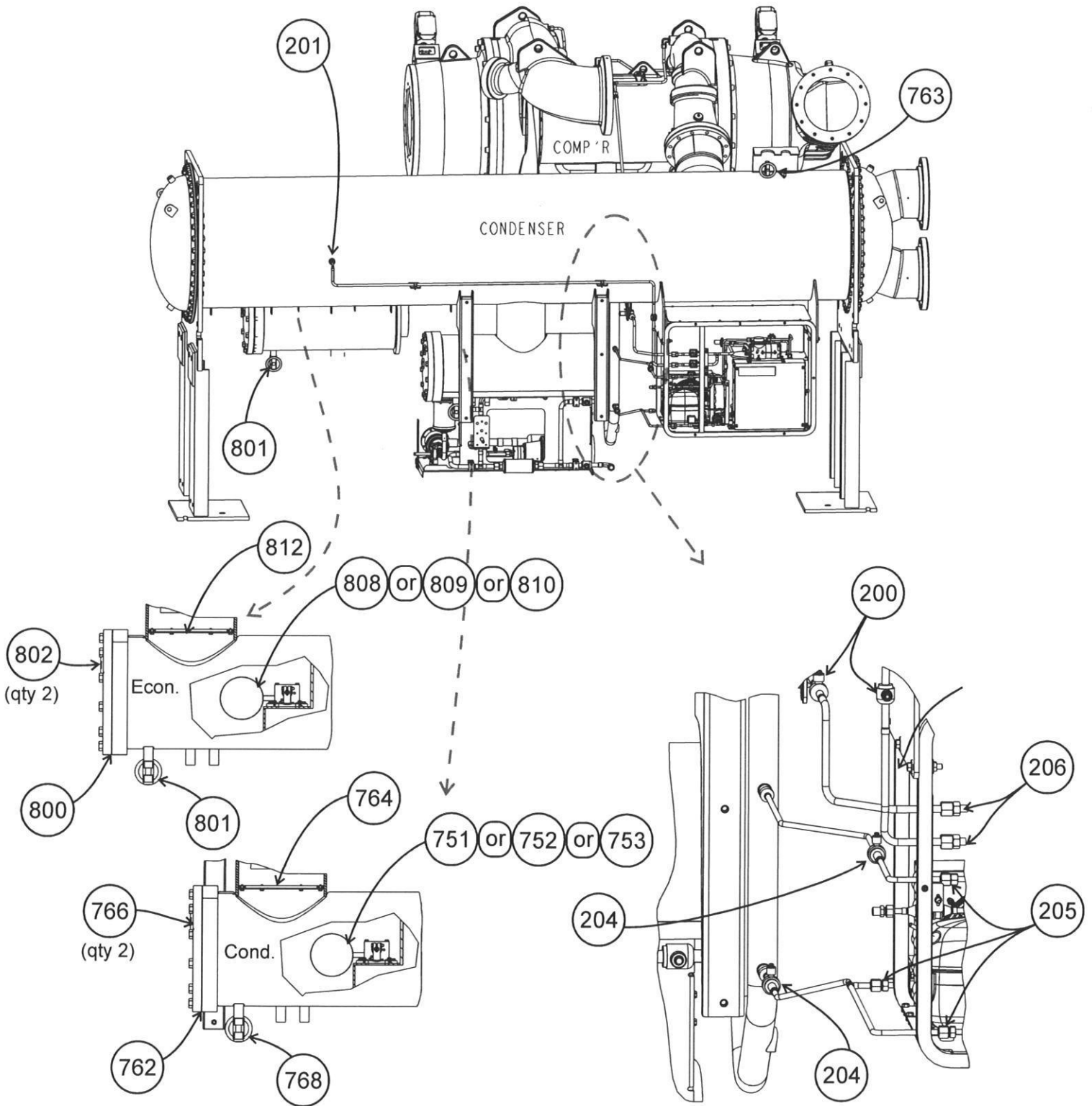
Release Date: 03/21
 Catalog No: RCD-3519-092
 Supersedes: NEW

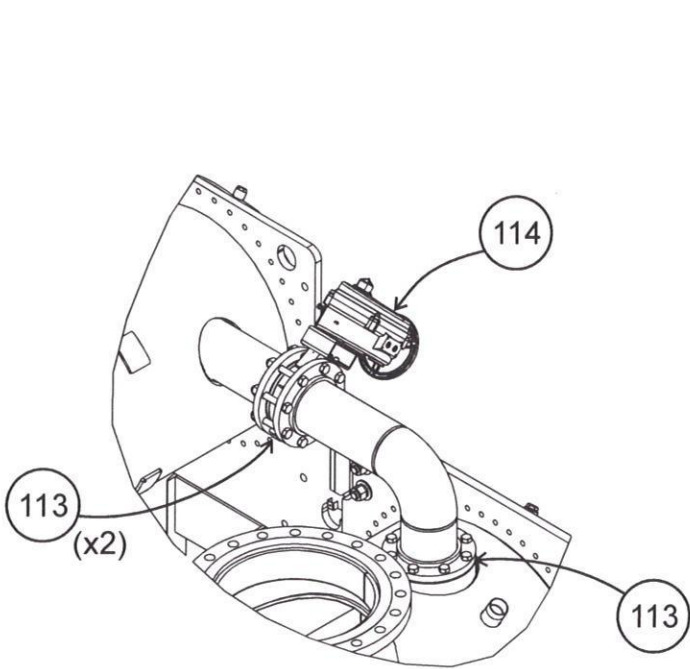
Revision:
 Revision:



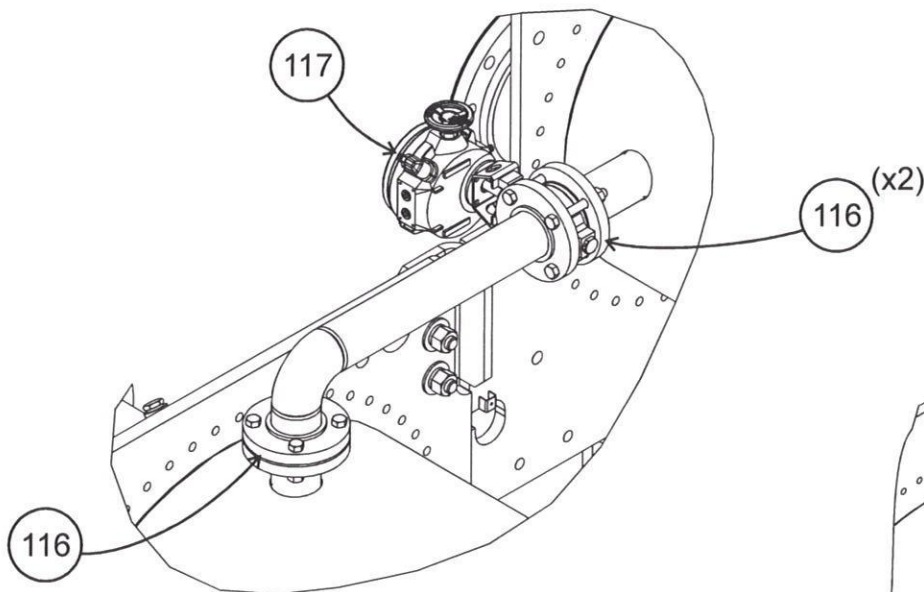
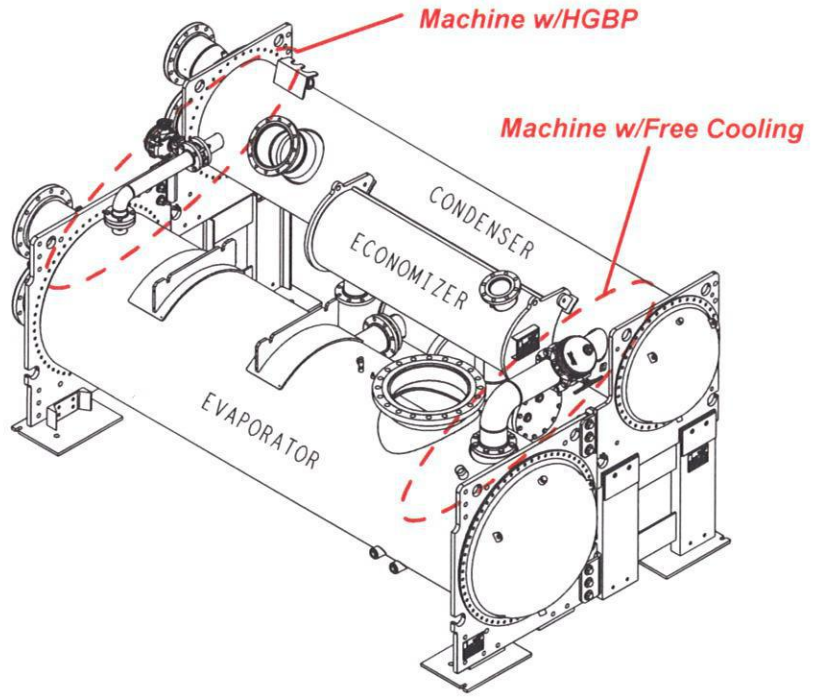
Release Date: 03/21
Catalog No: RCD-3519-085
Supersedes: NEW

Revision:
Revision:

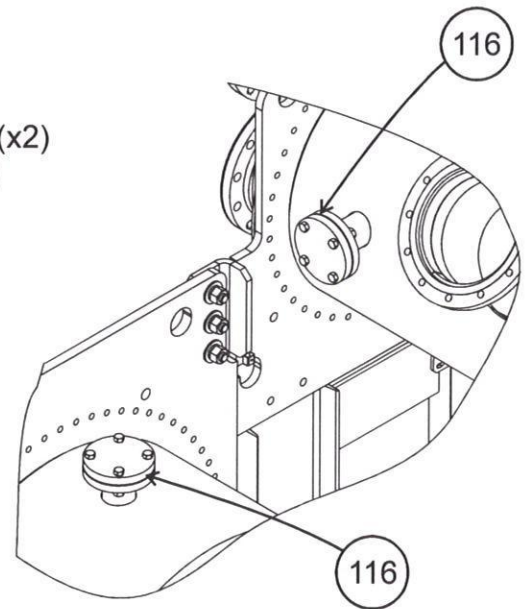




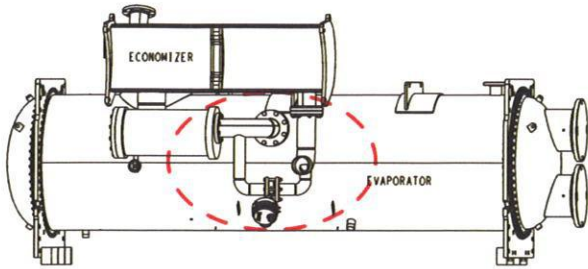
Machine w/Free Cooling



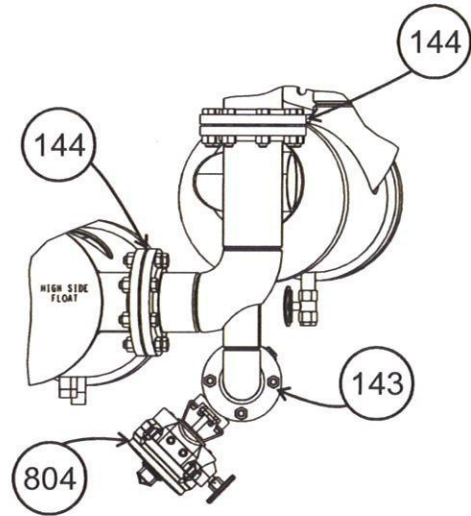
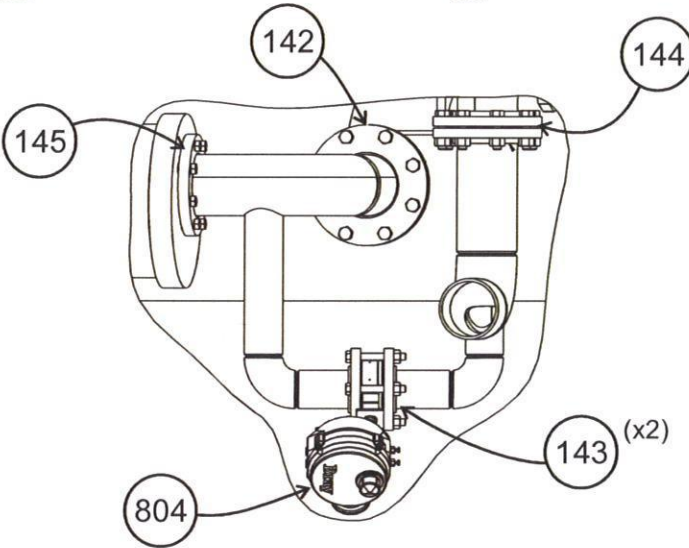
Machine w/HGBP



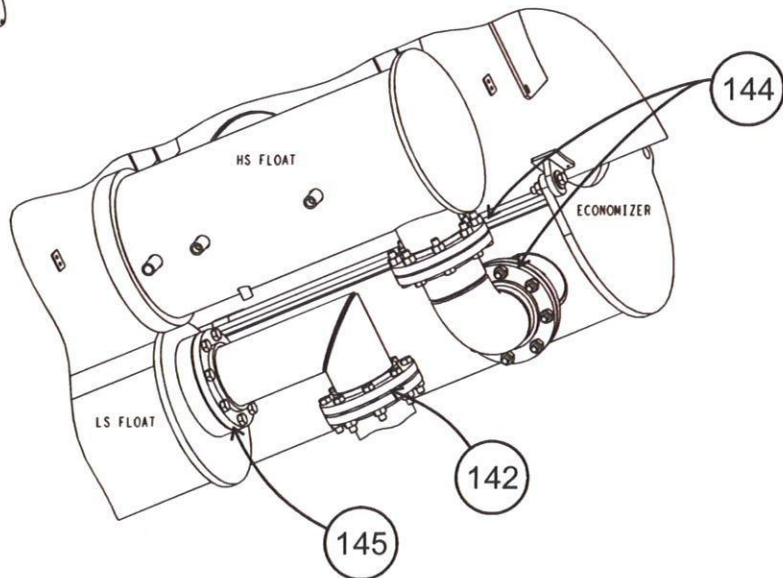
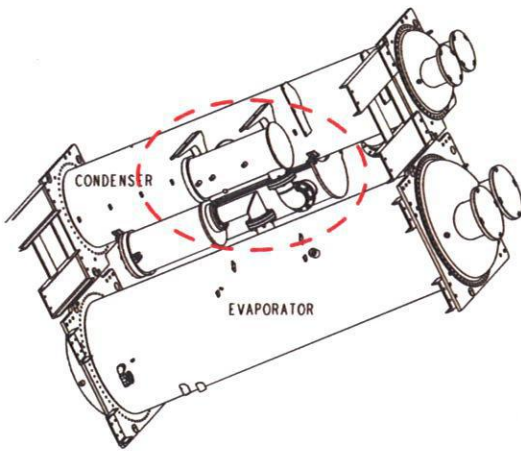
Machine w/o HGBP

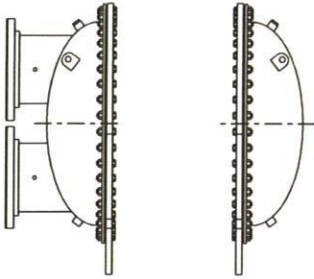


Liquid Lines w/Economizer Bypass

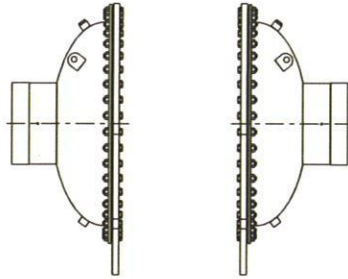


Liquid Lines w/o Economizer Bypass

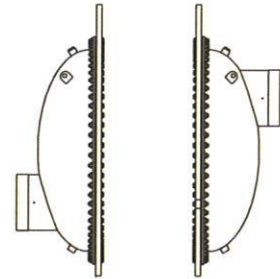




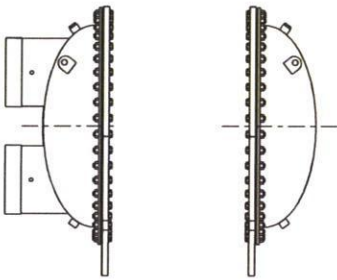
Dished Head, 2 Pass, Flanged



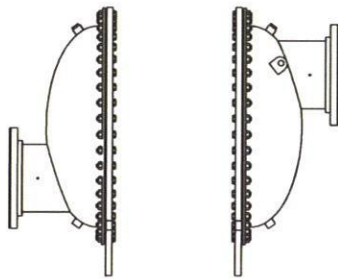
Dished Head, 1 Pass, Victaulic



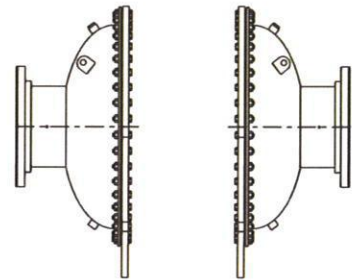
Dished Head, 3 Pass, Victaulic



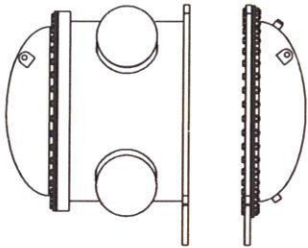
Dished Head, 2 Pass, Victaulic



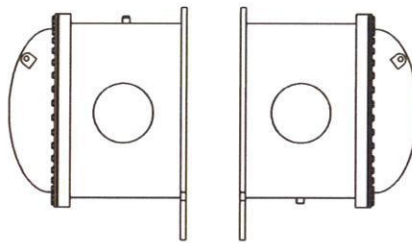
Dished Head, 3 Pass, Flanged



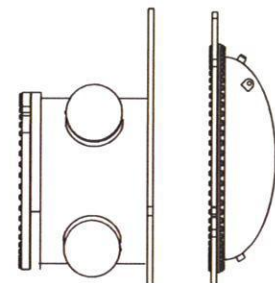
Dished Head, 1 Pass, Flanged



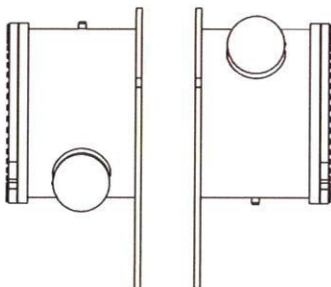
Marine Waterbox, 2 Pass, Victaulic



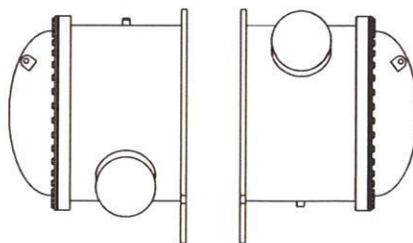
Marine Waterbox, 1 Pass, Victaulic



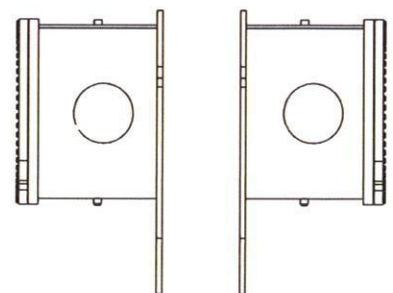
Marine Waterbox, 2 Pass, Victaulic



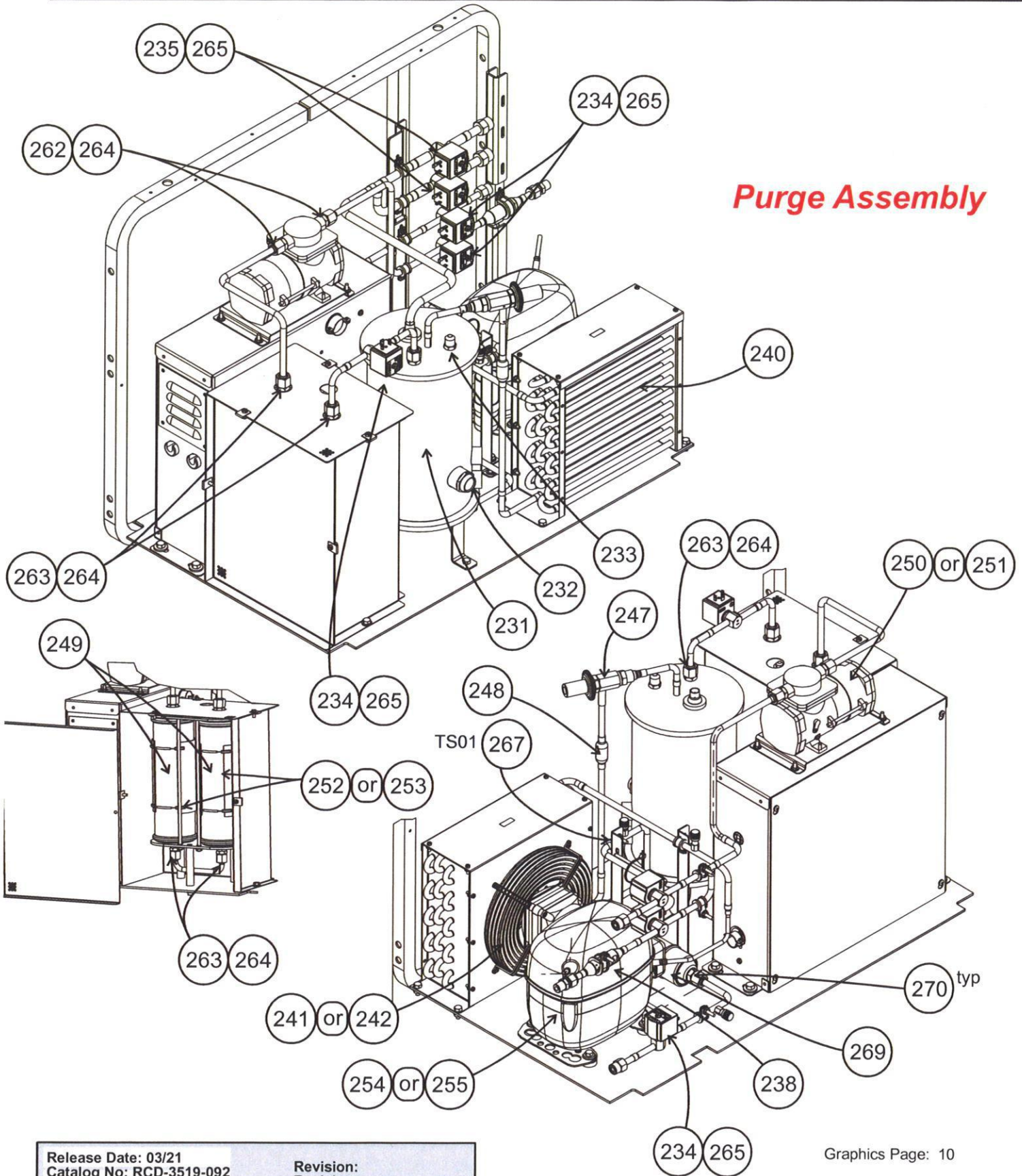
Marine Waterbox, 3 Pass, Victaulic



Marine Waterbox, 3 Pass, Victaulic



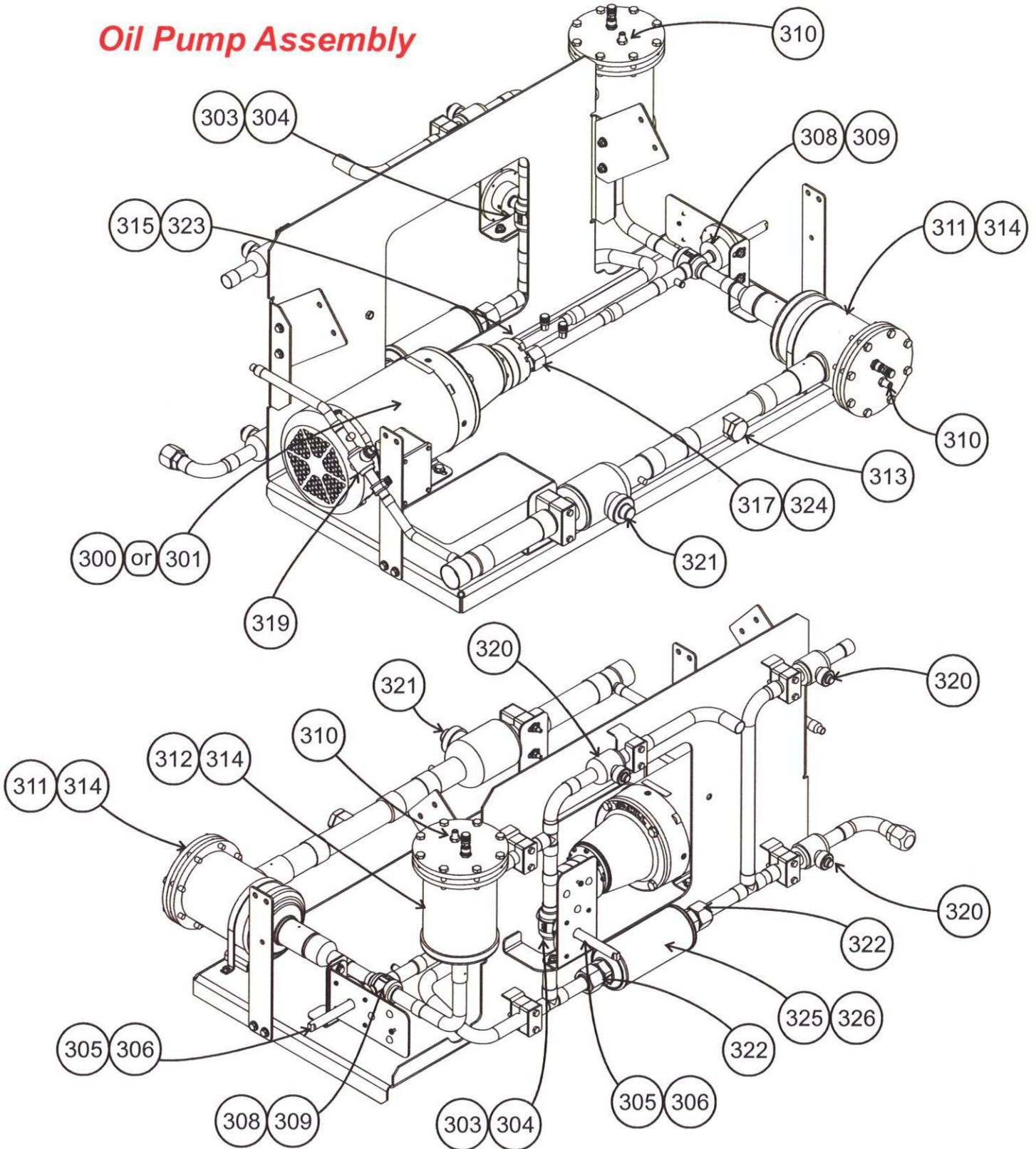
Marine Waterbox, 1 Pass, Victaulic

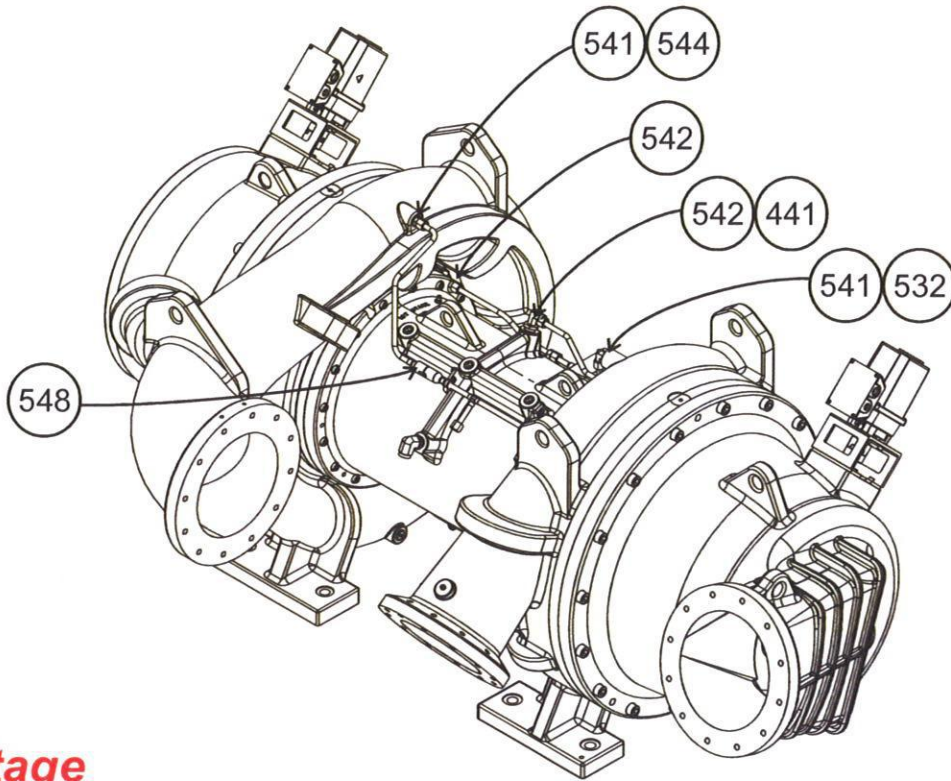


Release Date: 03/21
 Catalog No: RCD-3519-092
 Supersedes: NEW

Revision:
 Revision:

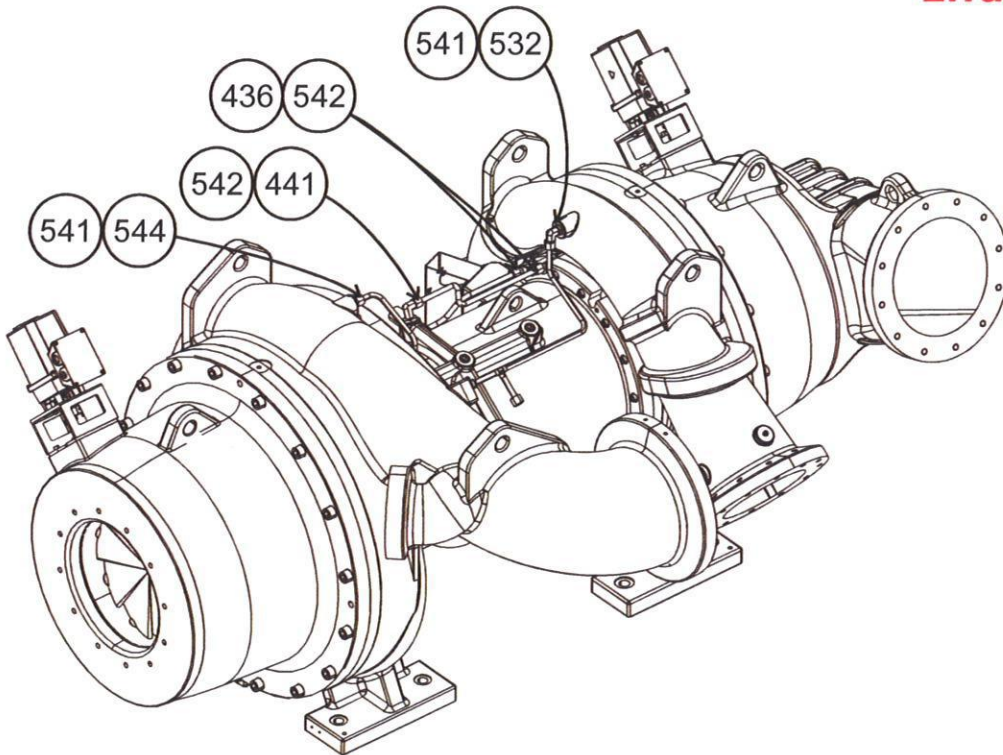
Oil Pump Assembly





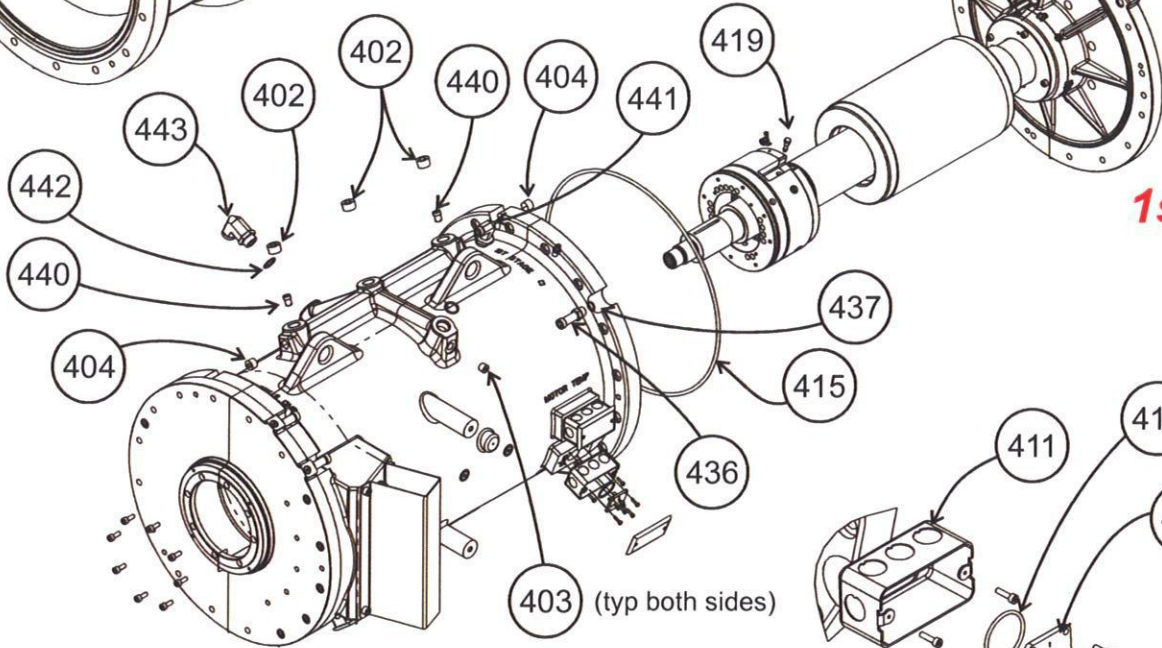
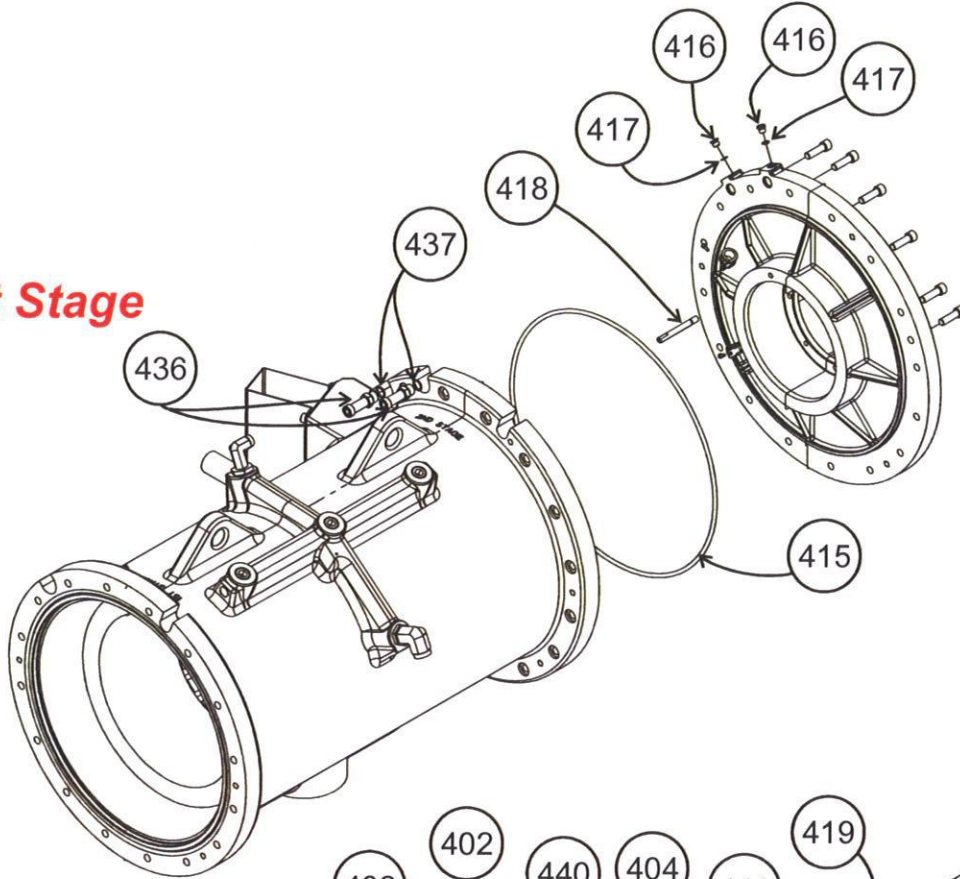
1st Stage

2nd Stage



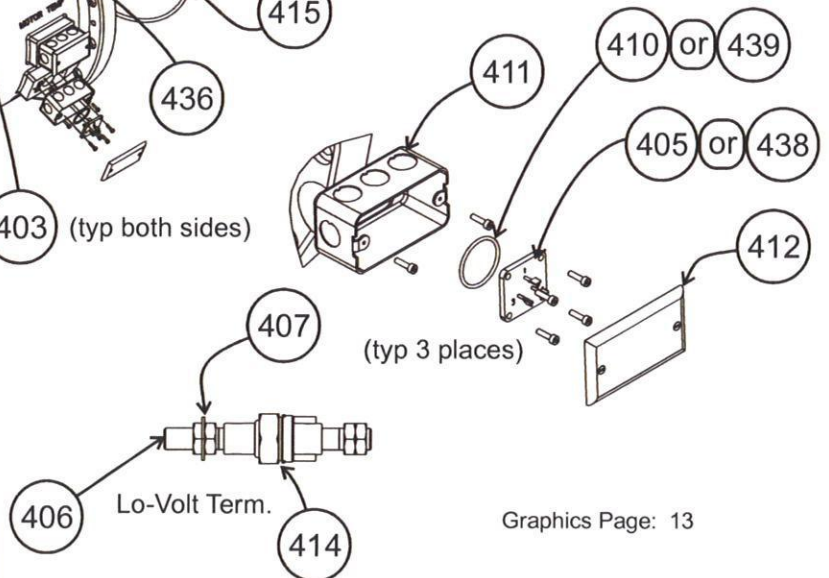
1st Stage

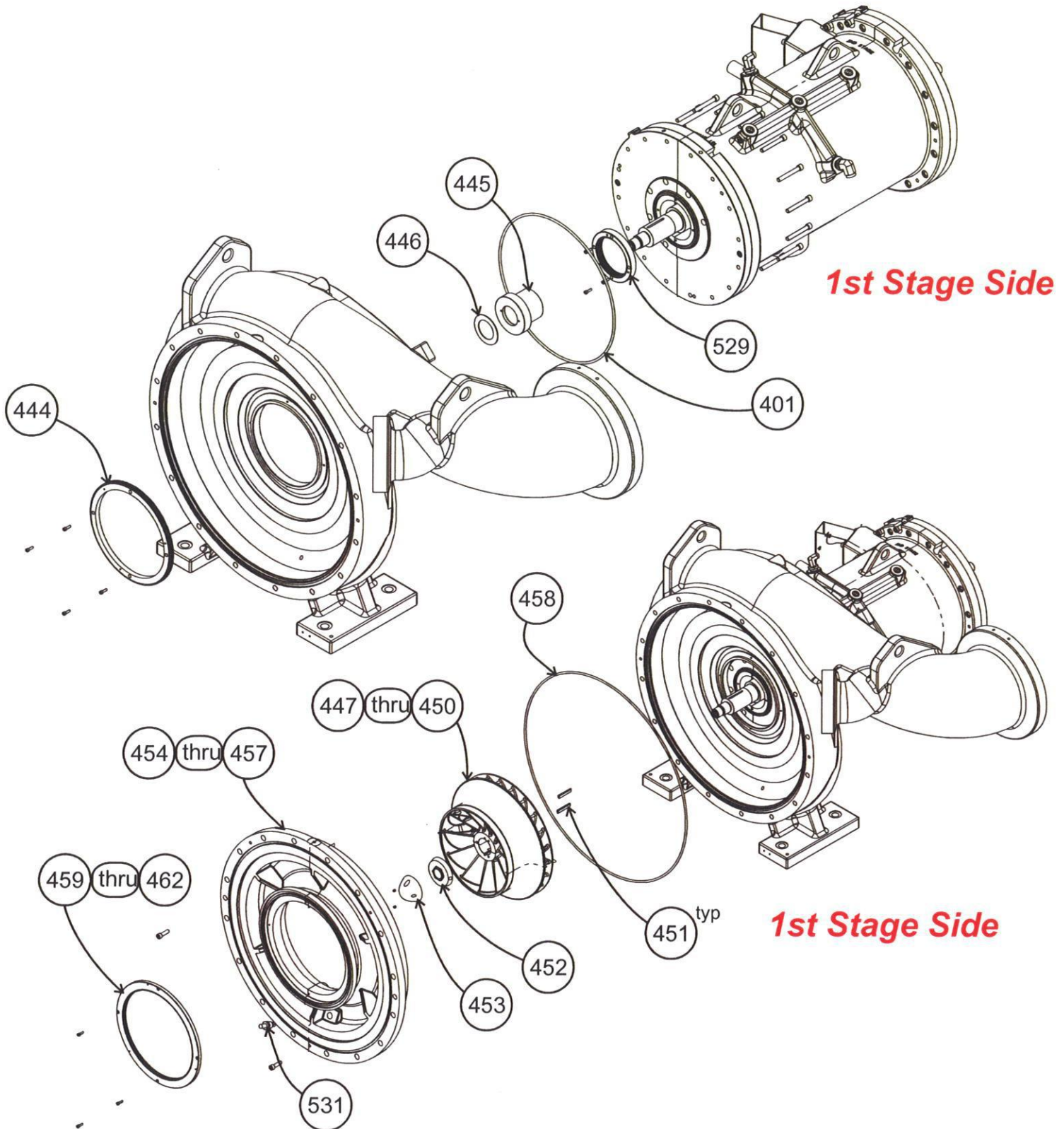
2nd Stage

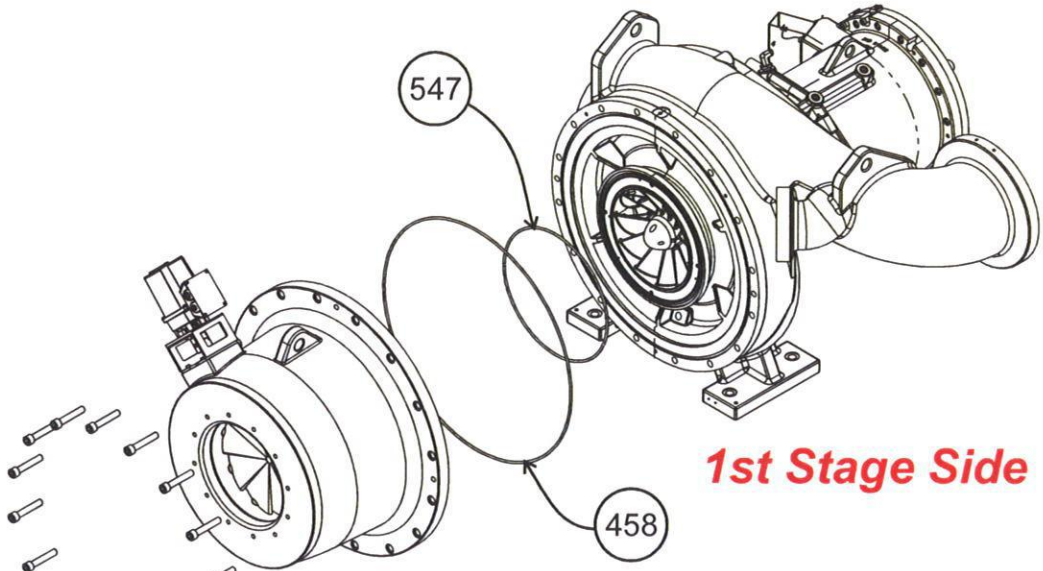


1st Stage

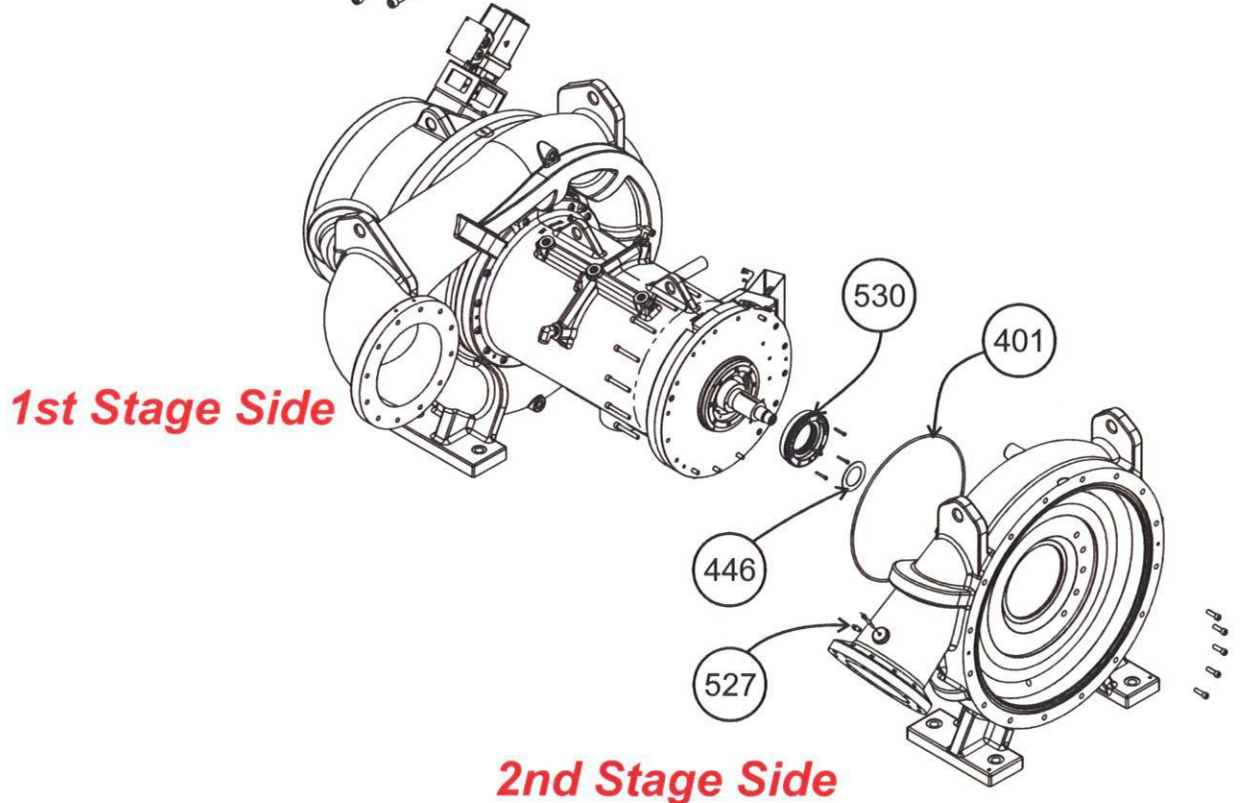
2nd Stage



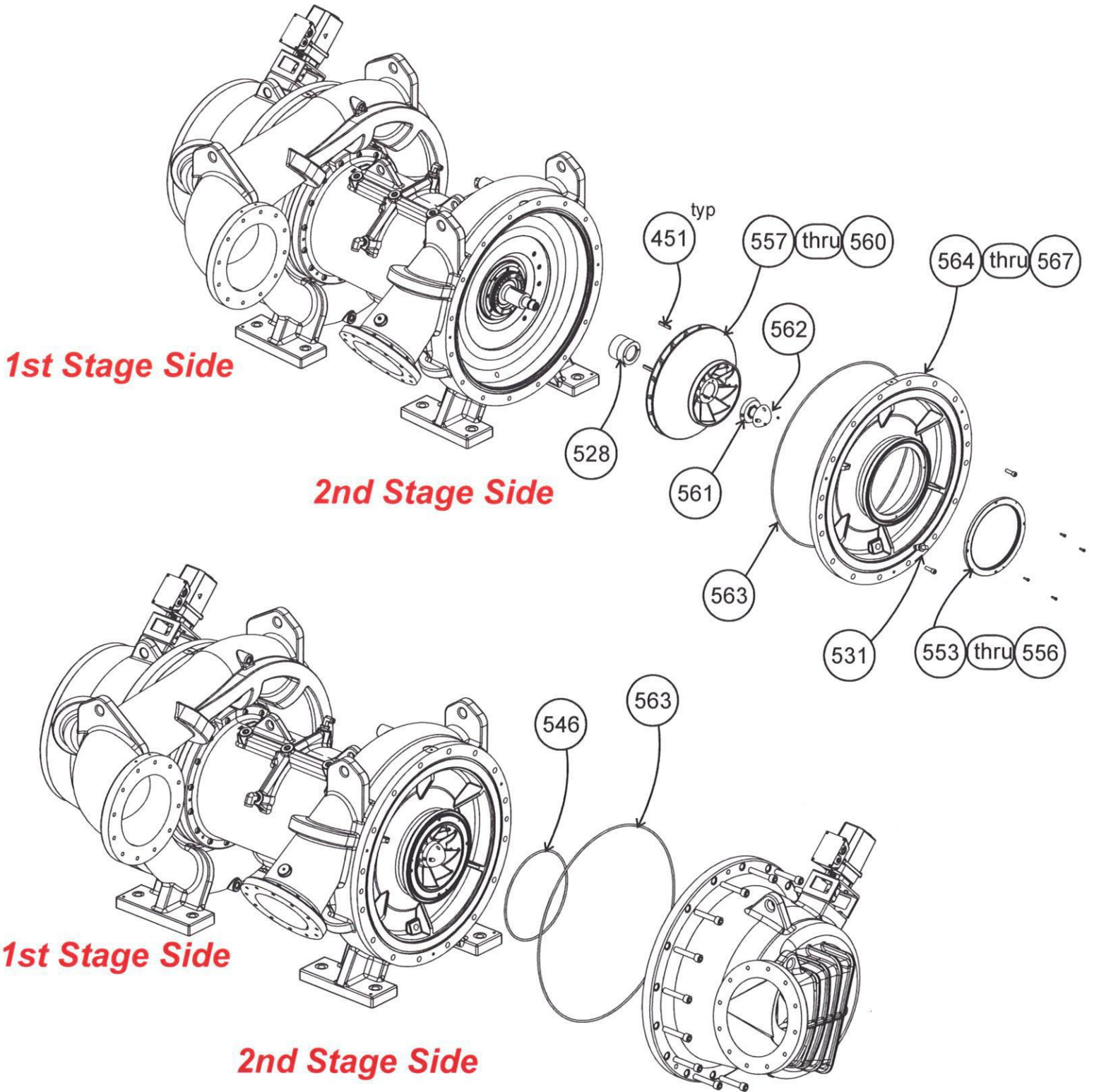


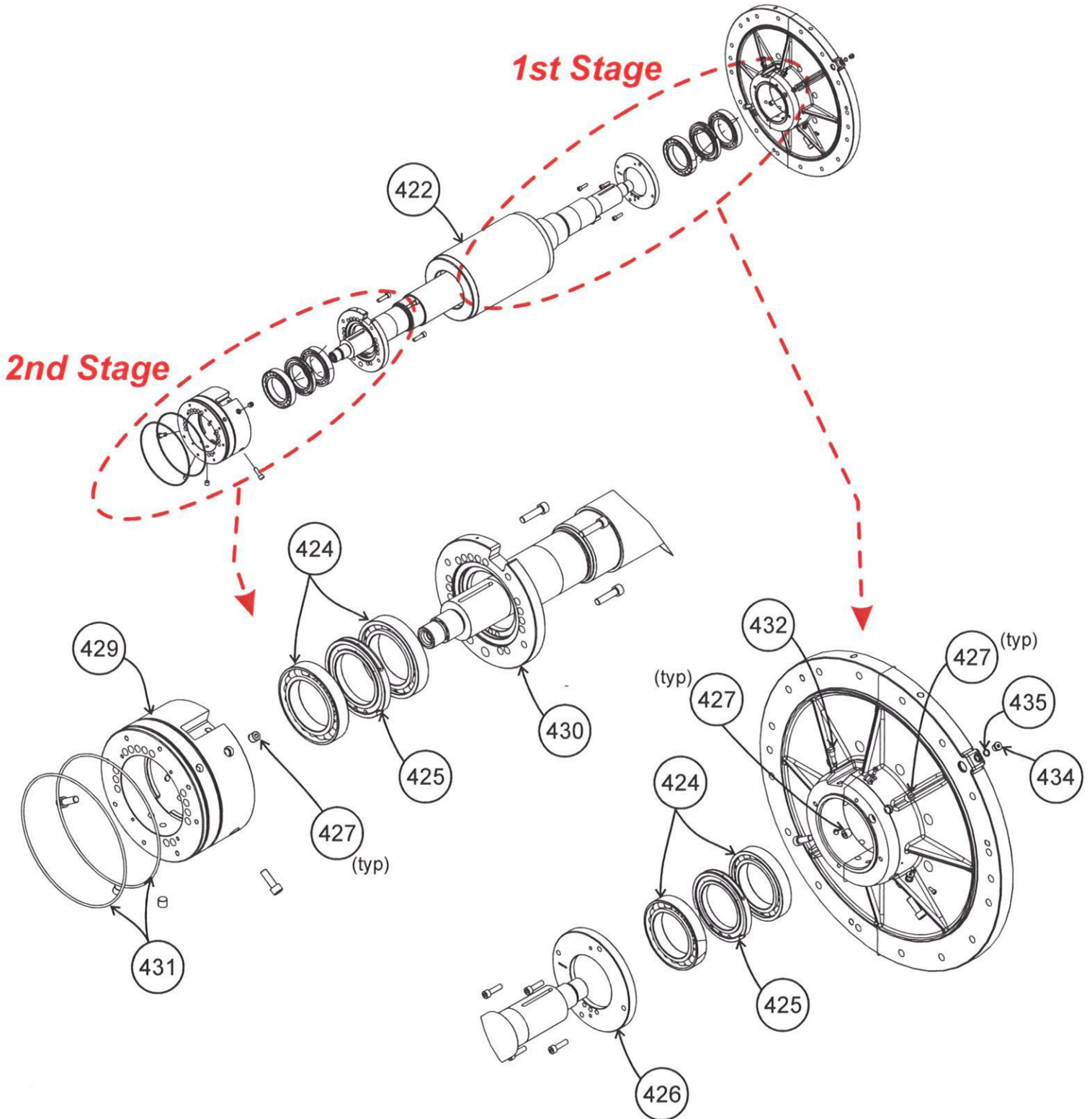


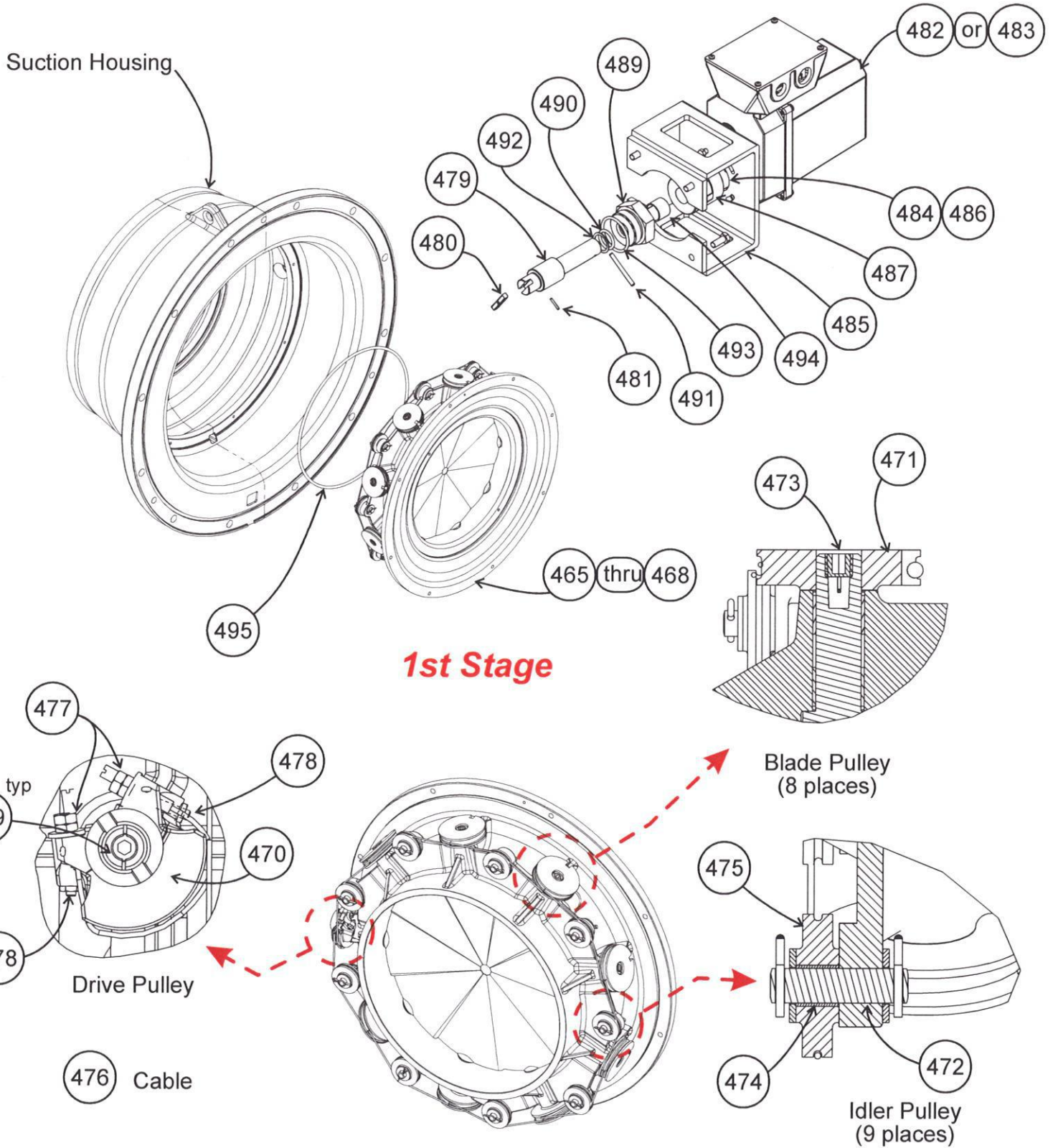
1st Stage Side

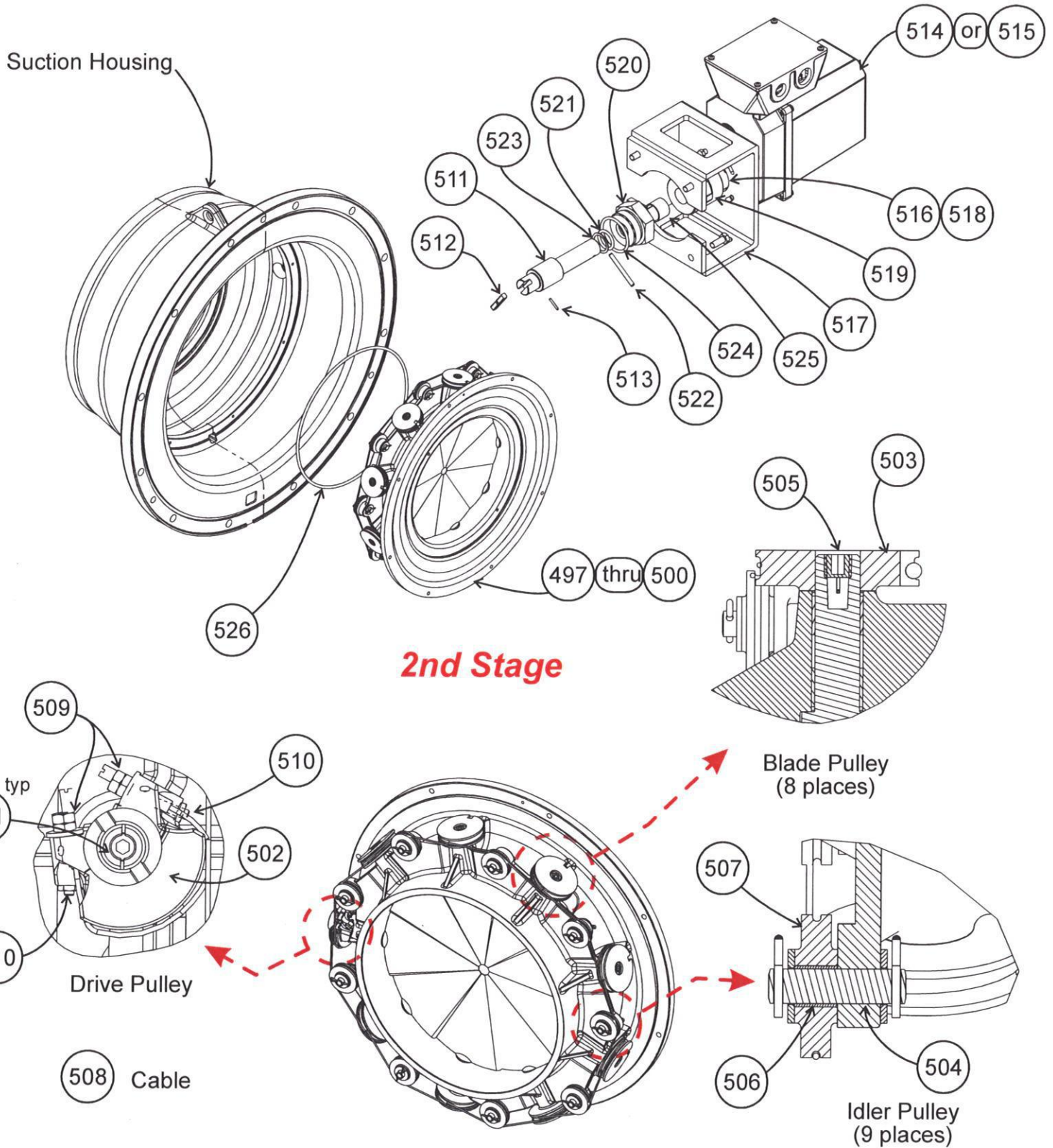


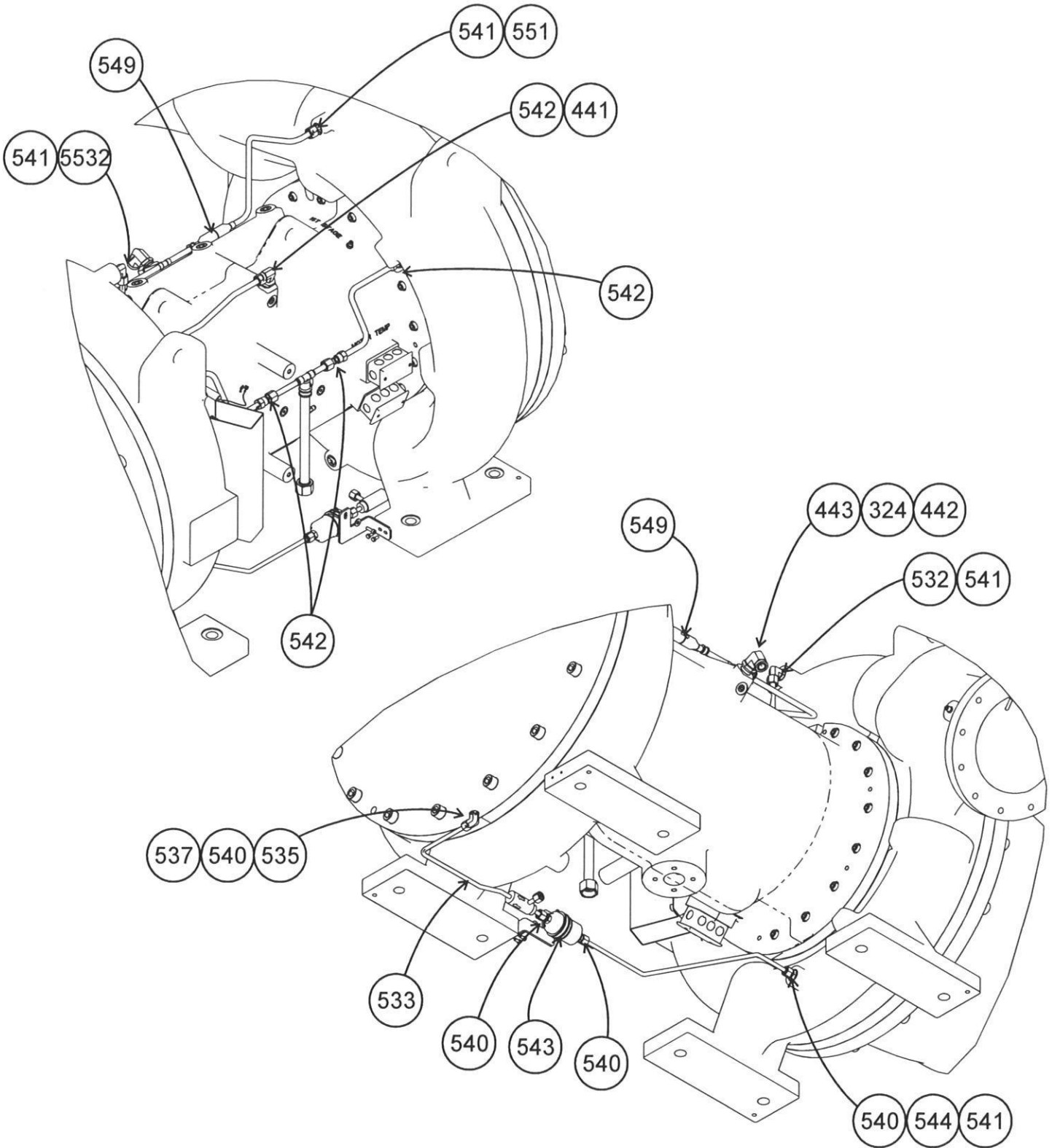
2nd Stage Side

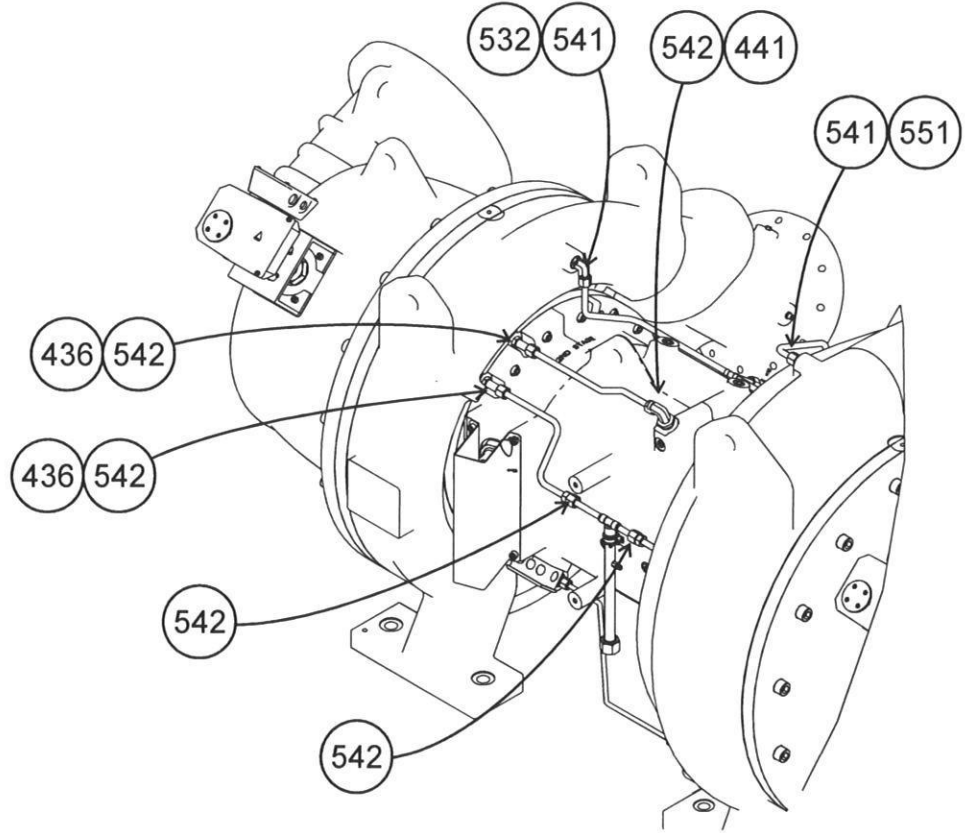
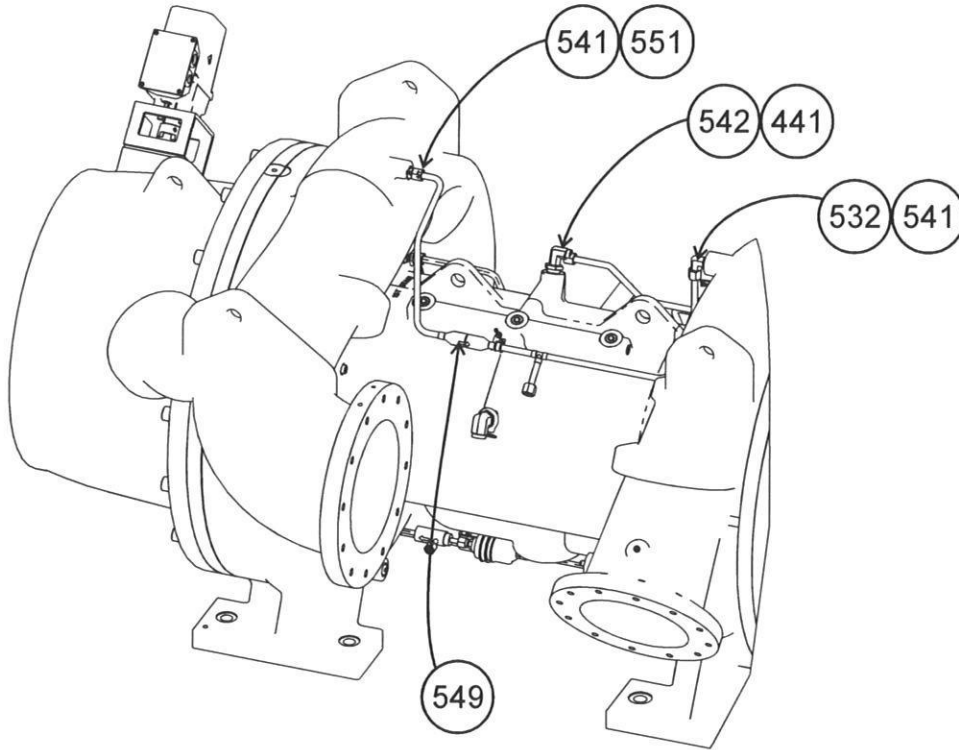






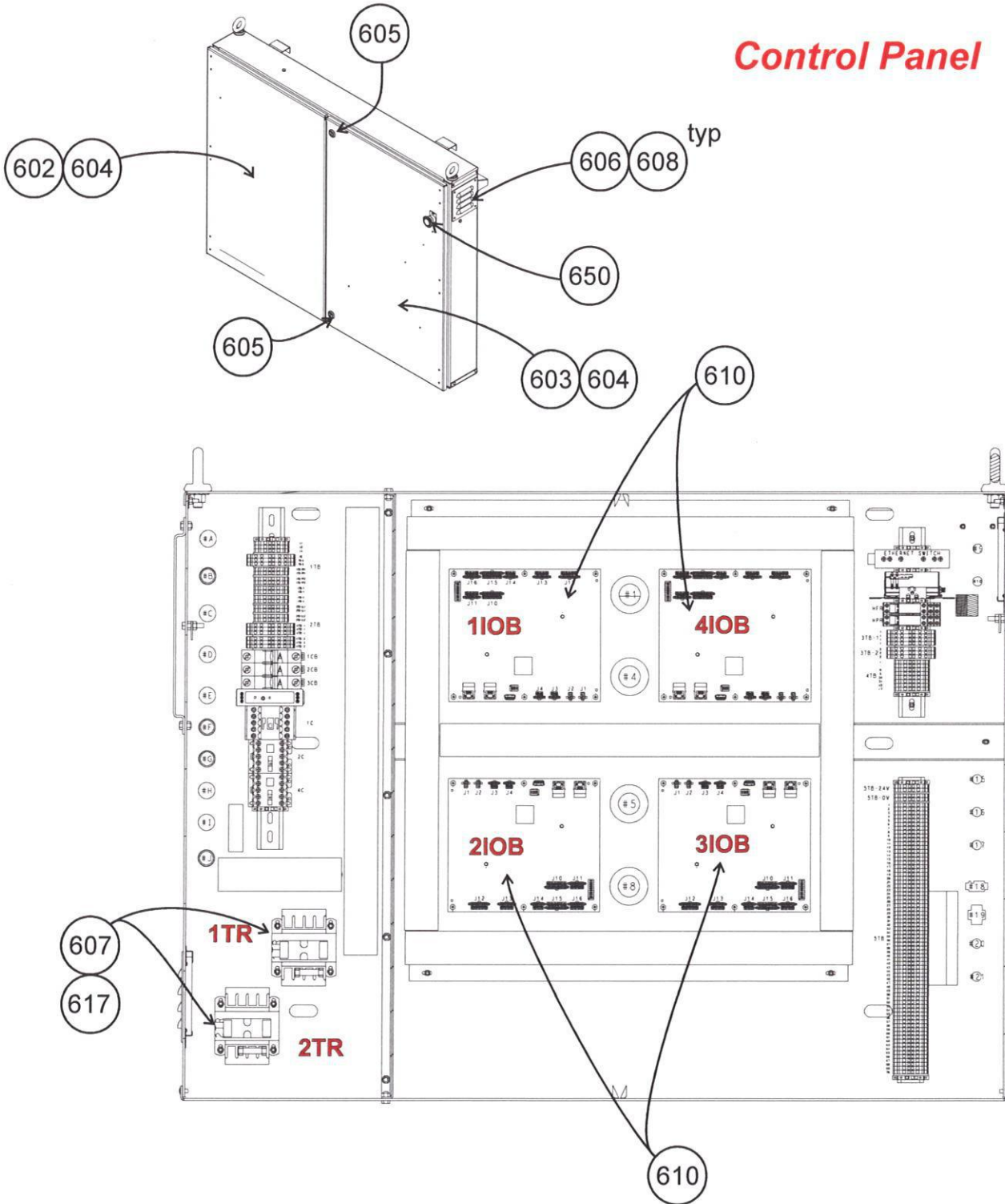


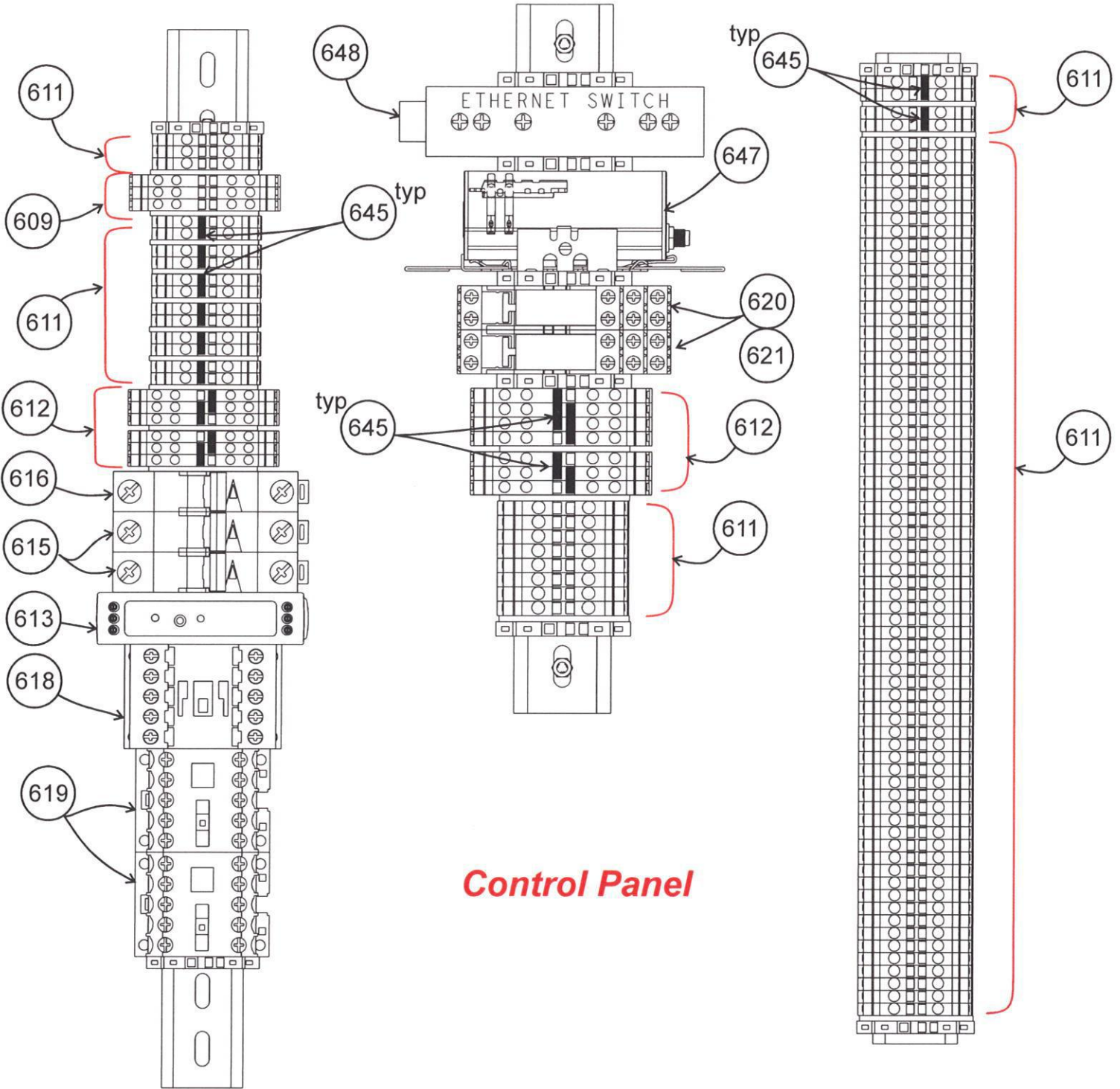




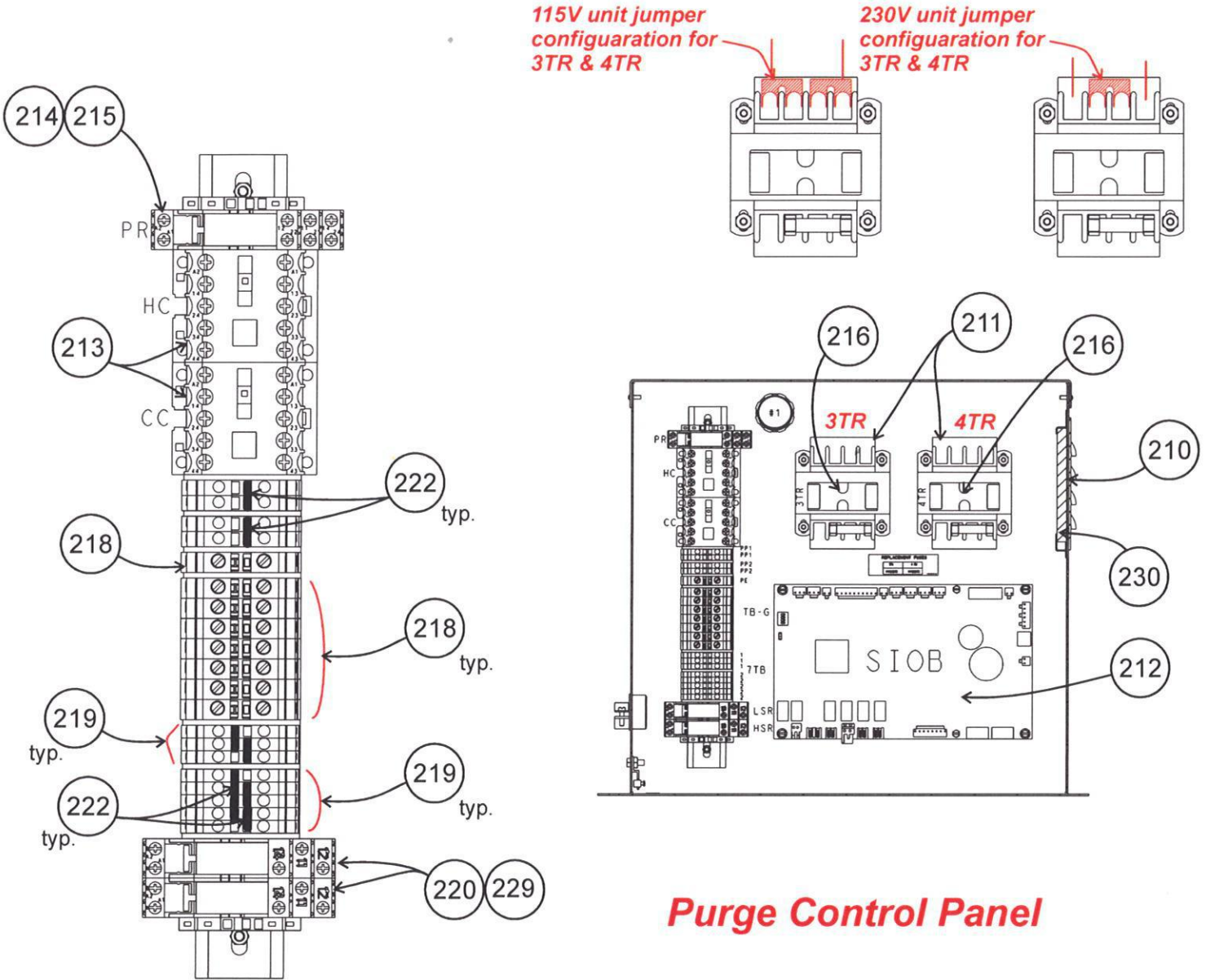
Release Date: 03/21
 Catalog No: RCD-3519-092
 Supersedes: NEW

Revision:
 Revision:

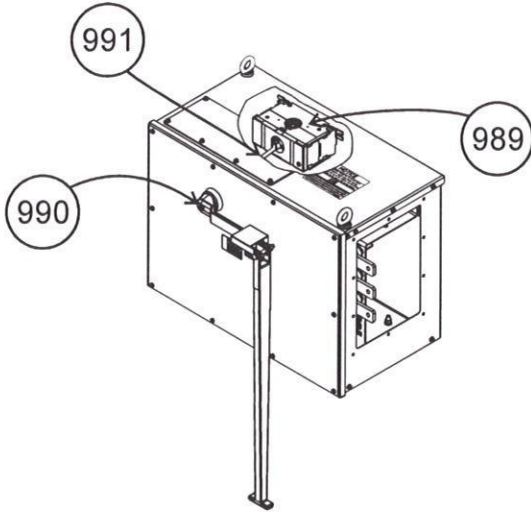




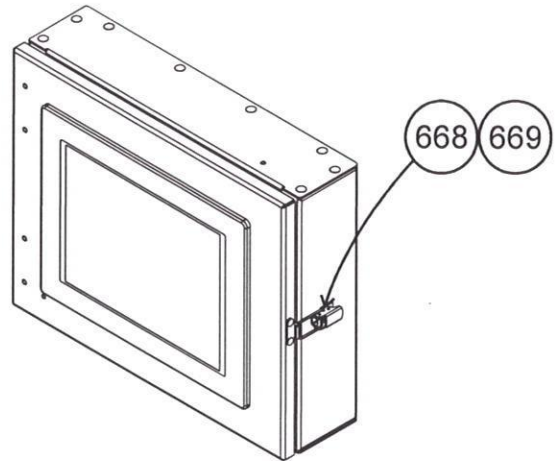
Control Panel



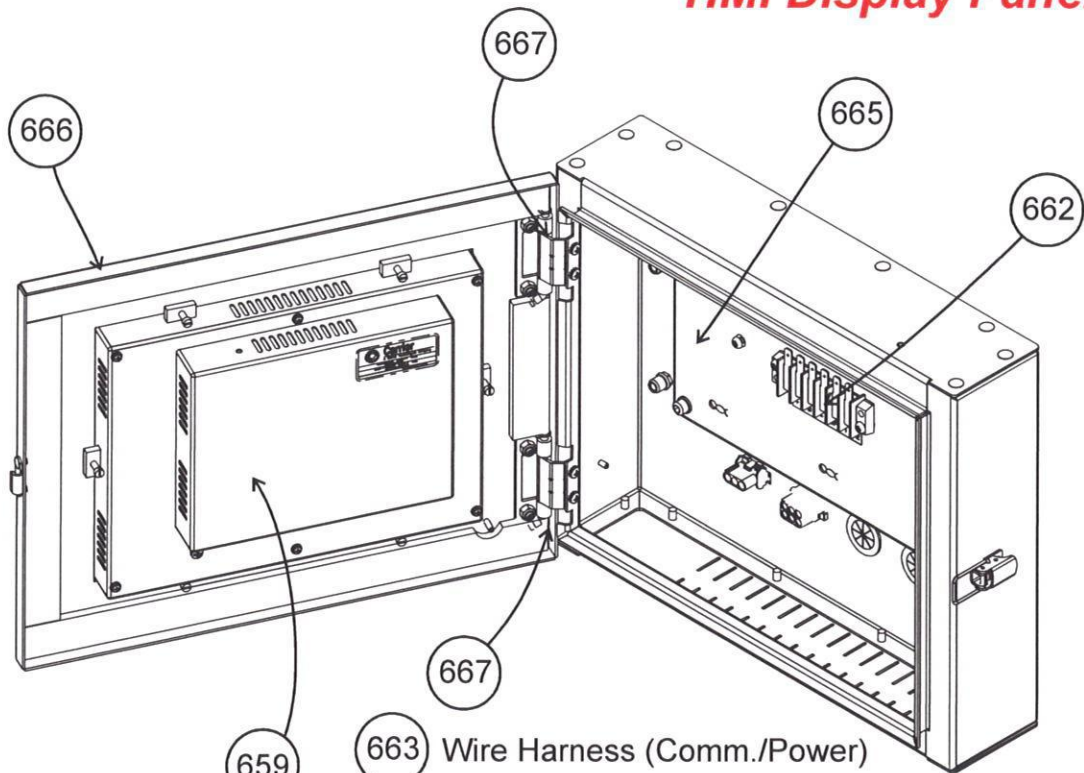
Purge Control Panel



VFD Disconnect



HMI Display Panel



663 Wire Harness (Comm./Power)

664 Wire Harness (Control)



HERMETIC CENTRIFUGAL
LIQUID CHILLER

19DV

SIZE: 3 3
SERIES: FR#3COMPR

ITM	PART DESCRIPTION	19DV-FR#3			
		COMPR. SIZE			
MACHINE ARRANGEMENT & PIPING					
100	GASKET (10")		19DV45015806GS		
101	GASKET (12")	(2)	19DV45015807GS		
102	GASKET (14")		19DV45015809GS		
103	GASKET (20")		19DV45005716GS		
104	HMI SUPPORT ASSEMBLY		19XF14093301		
105	GASKET (HMI SUPPORT)	(2)	19XF15092401		
106	GASKET (HMI SUPPORT)	(4)	GB97D06		
107	RUBBER WASHER (HMI SUPPORT)	(2)	19XF15093401		
108	RUBBER WASHER (HMI SUPPORT)	(2)	19XF15007201		
109	SIGHTGLASS		KM36BS163		
110	SIGHTGLASS O-RING		KK71EH920		
111	O-RING (2-1/4") (MTR COOLING DRAIN)		KK71EH228		
112	RUPTURE DISC (2")		19DV35014601LC		
113	GASKET (6")	(3)	19DV45005709GS		
114	DAMPER VALVE ASSEMBLY (6")		19DV45000130GS		
114 A	VALVE		RC6800253		
114 B	ACTUATOR		RC6800254		
114 C	ADAPTER KIT		RC6800255		
116	GASKET (3")	(3)	19DV45005705GS		
117	DAMPER VALVE ASSEMBLY (3")		19DV45000123GS		
119	VALVE		19DV680001		
120	ACTUATOR		19DV680002		
121	ADAPTER KIT		19DV680003		
122	BALL VALVE (3/8")(REFRIG. RECOVERY)	(2)	EP71BA121		
123	SIGHTGLASS (3/8")(REFRIG. RECOVERY)		KM43AG101		
124	STRAINER (3/8")(REFRIG. RECOVERY)		KH11QD070		
125	O-RING (3/8")(REFRIG. RECOVERY)	(3)	KK71EH012		
126	X		X		
127	BEARING SUPPLY/DRAIN REF. DRW. (12')		19DV34016402LC		
128	BEARING SUPPLY/DRAIN REF. DRW. (14')		19DV34016403LC		
129	LUBE SYSTEM FILTER		19DV45028702LC		
130	BALL VALVE (7/8")	(3)	EP71BA271		
131	O-RING (7/8")	(2)	KK71EH020		
132	LIQUID INDICATOR (7/8")	(2)	KM43AG501		
133	FILTER		19DV45020201GS		
134	O-RING (3/4")		KK71EH018		
135	O-RING (7/8")	(3)	KK71EH020		
136	VFD COOLING ARRANGEMENT (12')		19DV34016502LC		
137	VFD COOLING ARRANGEMENT (14')		19DV34016503LC		
138	SOLENOID VALVE (5/8")		EF23VS271		
139	BALL VALVE (5/8")	(2)	EP71BA201		
140	SOLENOID COIL		EF19XS152		
141	O-RING (5/8")	(2)	KK71EH016		
142	GASKET (6")		19DV45005709GS		
143	GASKET (3")	(2)	19DV45005705GS		

PARTS LIST CATALOG

PARTS LIST PAGE: 001

CATALOG NO. : REV.
SUPERSEDES : REV.

NOTE: SEE "CATALOG NOTES" ON LAST PAGE FOR EXPLANATION OF SYMBOLISM.



HERMETIC CENTRIFUGAL
LIQUID CHILLER

19DV

SIZE: 3 3
SERIES: FR#3COMPR

ITM	PART DESCRIPTION	19DV-FR#3	
		COMPR. SIZE	
MACHINE ARRANGEMENT & PIPING			
144	GASKET (5")	(3)	19DV45005708GS
145	GASKET (5")	(2)	19DV45015803GS
PURGE ASSEMBLY			
200	BALL VALVE (1/2") (PURGE)	(2)	EP71BA181
201	CONNECTOR (3/8")(9/16-18) (PURGE)		DC80SA005
202	CONNECTOR O-RING		KK71EH906
203	CONNECTOR (1/2")(13/16-16) (PURGE)		X
204	BALL VALVE (3/8") (PURGE)	(2)	EP71BA121
205	O-RING (3/8") (PURGE)	(3)	KK71EH012
206	O-RING (1/2") (PURGE)	(2)	KK71EH014
207	X		X
208	PURGE ELECTRICAL PANEL (115V)		11DV04007001LC
209	PURGE ELECTRICAL PANEL (230V)		11DV04007002LC
210	AIR FILTER LOUVER PLATE		HX29ZZ001
211	TRANSFORMER (3TR & 4TR)	(2)	HT01EA100
212	CIRCUIT BOARD (SIOB)		00PPG000492500
213	CONTACTOR (CC & HC)	(2)	HH14ZA001
214	RELAY MOUNTING SOCKET (PR)		HN79EZ006
215	RELAY (PR)		HN79EZ005
216	FUSE (3TR & 4TR)	(2)	HY10KB153
217	TERMINAL BLOCK (LL1 & LL2)	(2)	HY84EH001
218	TERMINAL BLOCK (PE)	(8)	HY84SE015
219	TERMINAL BLOCK (7TB)	(8)	HY84EG001
220	RELAY (LSR & HSR)	(2)	HN61ZP032
221	PURGE PANEL WIRE HARNESS		03DV05002101LC
	Harness includes: low & high level switch cable, TS01 cable, purge condenser valve cables, purge pumpout valve cables, purge drainage valve cable, purge regeneration valve cable, purge discharge valve cable.		
222	TERMINAL JUMPER (2 POSITION)	(8)	HY680106
223	TEMPERATURE SENSOR (TS01)		HH79NZ031
224	PURGE PANEL WIRE HARNESS		03DV05104101LC
225	PURGE CONTROL VALVE		11DV05505701LC
226	X		X
227	X		X
228	CABLE ASSEMBLY (PURGE COMPRESSOR)		03DV04102901LC
229	RELAY SOCKET (LSR & HSR)	(2)	HY11TC032
230	ENCLOSER AIR FILTER		KH03HZ400
231	PURGE TANK ASSEMBLY		11DV04503101LC
232	SIGHTGLASS (SEAL NOT SOLD SEPERATE)		11DV05507201GS
233	FUSIBLE UNION (168 DEGREES)		EK41JD168
234	SOLENOID VALVE (3/8")	(4)	EF23BS122
235	SOLENOID VALVE (1/2")	(2)	EF23BS150
236	O-RING FACE SEAL CONNECTOR (3/8)		DF34CA007
237	SOLENOID VALVE (3/8")		X

PARTS LIST CATALOG

PARTS LIST PAGE: 002

CATALOG NO. : REV.
SUPERSEDES : REV.

NOTE: SEE "CATALOG NOTES" ON LAST PAGE FOR EXPLANATION OF SYMBOLISM.



HERMETIC CENTRIFUGAL
LIQUID CHILLER

19DV

SIZE: 3 3
SERIES: FR#3COMPR

ITM	PART DESCRIPTION	19DV-FR#3		
		COMPR. SIZE		
PURGE ASSEMBLY				
238	CHECK VALVE (3/8")	11DV05507901GS		
239	CONNECTOR FITTING (3/8")	DC09CA022		
240	PURGE CONDENSER ASSEMBLY	11DV04500902LC		
241	CONDENSER FAN ASSEMBLY (115V 60HZ)	11DV04501002LC		
242	CONDENSER FAN ASSEMBLY (220V 50HZ)	11DV04501003LC		
247	PURGE VALVE (3/8")	11DV05503301LC		
248	REFRIGERANT STRAINER (3/8")	11DV05509901GS		
249	PURGE FILTER DRIER (1/4"-18-NPT)	(2) 11DV05504001GS		
250	VACUUM PUMP (115V 60HZ)	11DV05507302LC		
Rebuild kit part number 107N available from Thomas Compressor.				
251	VACUUM PUMP (220V 50HZ)	11DV05507303LC		
Rebuild kit part number 107N available from Thomas Compressor.				
252	PURGE HEATER (115V 60HZ)	(2) 11DV05507602LC		
253	PURGE HEATER (220V 50HZ)	(2) 11DV05507603LC		
254	PURGE COMPRESSOR (115V 60HZ)	195B0042		
255	PURGE COMPRESSOR (220V 50HZ)	RC6800191		
256	STARTING RELAY (115V 60HZ)	117U6020		
257	STARTING RELAY (220V 50HZ)	117U6003		
258	TERMINAL COVER (115V 60HZ)	103N2008		
259	TERMINAL COVER (220V 50HZ)	103N2009		
260	START CAPACITOR (115V 60HZ)	117U5023		
261	START CAPACITOR (220V 50HZ)	117U5017		
262	FITTING (1/8" NPT X 3/8" ORFS)	(2) 19DV05000101GS		
263	FITTING (1/4" NPT X 3/8" ORFS)	(5) 19DV05000102GS		
264	O-RING (3/8")	(7) KK71EH012		
265	SOLENOID COIL (24V)	(6) EF19XS151		
266	SOLENOID COIL (24V)	X		
267	PURGE TEMPERATURE SENSOR	HH79NZ031		
268	PURGE LEVEL SWITCH	(2) 03DV05104501LS		
269	STRAINER	KH11QD070		
270	O-RING (3/8")	(2) KK71EH012		
LUBRICATION PACKAGE				
300	LUBRICATION PUMP (460V/60HZ,380V/50H)	19DV45054801GS		
301	LUBRICATION PUMP (380V/60HZ)	19DV45054802GS		
302	2-WAY VALVE ACTUATOR ASSEMBLY (REF.)	19DV44024101LC		
303	2-WAY BALL VALVE (7/8")	19DV45026601LC		
304	SET SCREW (1/4"-20 X 7/16")	(2) AE19AR165		
305	BUMPER BUTTON	(6) 23XR05011101		
306	ACTUATOR VALVE SHAFT	(2) 23XR05024801		
307	3-WAY VALVE ACTUATOR ASSEMBLY (REF.)	19DV44023901LC		
308	3-WAY BALL VALVE (7/8")	19DV45025001LC		
309	SET SCREW (1/4"-20 X 7/16")	(2) AE19AR165		
310	UNION,FUSEABLE (214 DEG)	(2) EK41JK208		
311	STRAINER HOUSING (1-5/8")	19DV45025301LC		
312	STRAINER HOUSING (7/8")	19DV45025401LC		



HERMETIC CENTRIFUGAL
LIQUID CHILLER

19DV

SIZE: 3 3
SERIES: FR#3COMPR

ITM	PART DESCRIPTION	19DV-FR#3			
			COMPR. SIZE		
LUBRICATION PACKAGE					
313	SIGHTGLASS (1-5/8"		KM43AG413		
314	STRAINER FILTER REPLACEMENT W/GASKET	(2)	KH19UD340		
315	MALE CONNECTOR (5/8)		DF37SA013		
316	O-RING (.614)		KK71EH016		
317	MALE CONNECTOR (3/4)		DF37SA015		
318	O-RING (.739)		KK71EH018		
319	BALL VALVE (5/8")		EP71BA233		
320	BALL VALVE (7/8")	(3)	EP71BA271		
321	BALL VALVE (1-5/8")		EP71BA461		
322	O-RING (.926)	(2)	KK71EH020		
323	O-RING (.614)		KK71EH016		
324	O-RING (.739)		KK71EH018		
325	FILTER DRIER (7/8")		19DV45028703LC		
326	O-RING		NUMBER.REQUIRED		
COMPRESSOR GROUP					
400	COMPRESSOR REF. DRAWING ONLY		02DV34000001		
401	O-RING (PWR TRAIN TO VOLUTE)	(2)	KK71EH468		
402	PIPE PLUG (3/4")	(3)	CA64AA201		
403	PIPE PLUG (3/8")	(2)	CA64AA101		
404	PIPE PLUG (1/2")	(2)	CA64AA151		
405	COMPRESSOR MOTOR REF. DRAWING ONLY		02DV44000101		
406	LO-VOLTAGE TERMINAL	(3)	02DV45004301		
407	BELLEVILLE WASHER	(3)	AU51AS391		
408	MOTOR TEMPERATURE SENSOR	(2)	32MP500354		
409	HERMETIC TERMINAL		HY85FP022		
410	O-RING (HERMETIC TERMINAL)		KK71EH128		
411	JUNCTION BOX EXTENSION	(3)	HX22FS036		
412	ELECTRICAL BOX COVER	(3)	HX08FZ050		
413	MOTOR TERMINAL COVER	(3)	02DV45007801		
414	O-RING (LO-VOLT TERMINAL)	(3)	KK71EH924		
415	O-RING (MOTOR COVERS TO HOUSING)	(2)	KK71EH468		
416	PLUG (7/16-20UNF)	(2)	02DV05001003		
417	O-RING (PLUG)	(2)	KK71EH904		
418	MOTOR COOLING NOZZLE		02DV35006701		
419	BEARING TEMPERATURE SENSOR ASY		02XF64003502		
420	TEMPERATURE SENSOR		HH79NZ076		
421	ROTOR ASSEMBLY REF. DRAWING ONLY		02DV34010301		
422	ROTOR & SHAFT		CONTACT.RCD		
423	O-RING (1ST STAGE BEARING HOUSING)	(2)	KK71EH269		
424	ROLLER BEARING ASSEMBLY (THRUST)	(2)	02DV44002001		
425	SPACER ASSEMBLY (THRUST)	(2)	02DV44013501		
426	COVER PLATE (1ST STAGE SHAFT)		02DV35018101		
427	PIPE PLUG (1/4")	(6)	CA64AT051		
429	BEARING HOUSING ASY. (2ND STAGE)		02DV45032801		
430	COVER PLATE (2ND STAGE SHAFT)		02DV45018201		



HERMETIC CENTRIFUGAL
LIQUID CHILLER

19DV

SIZE: 3 3
SERIES: FR#3COMPR

ITM	PART DESCRIPTION	19DV-FR#3				
		COMPR. SIZE				
COMPRESSOR GROUP						
431	O-RING (2ND STAGE BEARING HOUSING)	(2)	KK71EH268			
432	BEARING TEMPERATURE SENSOR ASY		02XF64003505			
433	TEMPERATURE SENSOR		HH79N2076			
434	PLUG (7/16-20UNF)		02DV05001003			
435	O-RING (PLUG)		KH71EH904			
436	ADAPTER (3/4-16UNF)	(3)	02DV05000401			
437	O-RING (ADAPTER)	(3)	KK71EW908			
438	HERMETIC TREMINAL (3-POLE)	(2)	HY85FP022			
439	O-RING (HERMETIC TERMINAL)	(2)	KK71EH128			
440	MOTOR COOLING ORIFICE	(2)	02DV45007701			
441	ELBOW (90 DEG.)		DC85SA413			
442	O-RING (90 DEG. ELBOW)	(2)	KK71EH912			
443	ELBOW (90 DEG.)		DC85SA401			
444	BALANCING PISTON LABYRINTH (1ST STAG		02DV35005501			
445	BEARING SPACER (1ST STAGE)		02DV45033801			
446	IMPELLER SHIM (1ST & 2ND STAGE)	(2)	02DV45009301			
447	IMPELLER (1ST STAGE) (SEE NOTE)		02DV35005634			
	Used in compressors with code 432. Refer to significance chart.					
448	IMPELLER (1ST STAGE) (SEE NOTE)		02DV35005644			
	Used in compressors with code 434. Refer to significance chart.					
449	IMPELLER (1ST STAGE) (SEE NOTE)		02DV35005654			
	Used in compressors with code 442. Refer to significance chart.					
450	IMPELLER (1ST STAGE) (SEE NOTE)		02DV35005664			
	Used in compressors with code 444. Refer to significance chart.					
451	IMPELLER KEY (1ST & 2ND STAGE)	(4)	02DV35008501			
452	IMPELLER LOCKNUT (1ST STAGE)		02DV35005001			
453	IMPELLER NOSE PIECE (1ST STAGE)		02DV35005201			
454	SHROUD (1ST STAGE) (SEE NOTE)		02DV35012713			
	Used in compressors with code 334. Refer to significance chart.					
455	SHROUD (1ST STAGE) (SEE NOTE)		02DV35012714			
	Used in compressors with code 344. Refer to significance chart.					
456	SHROUD (1ST STAGE) (SEE NOTE)		02DV35012715			
	Used in compressors with code 354. Refer to significance chart.					
457	SHROUD (1ST STAGE) (SEE NOTE)		02DV35012716			
	Used in compressors with code 364. Refer to significance chart.					
458	O-RING (SHROUD TO SUCTION HSG)	(2)	02DV45007605			
459	IMPELLER EYE LABY.(1ST STAGE)(SEE NO		02DV35015413			
	Used in compressors with codes 432 & 434. Refer to significance chart.					
460	IMPELLER EYE LABY.(1ST STAGE)(SEE NO		02DV35015414			
	Used in compressors with codes 442 & 444. Refer to significance chart.					
461	IMPELLER EYE LABY.(1ST STAGE)(SEE NO		02DV35015415			
	Used in compressors with codes 452 & 454. Refer to significance chart.					
462	IMPELLER EYE LABY.(1ST STAGE)(SEE NO		02DV35015416			
	Used in compressors with codes 462 & 464. Refer to significance chart.					
463	SHROUD (1ST STAGE IGV)		CONTACT.RCD			



HERMETIC CENTRIFUGAL
LIQUID CHILLER

19DV

SIZE: 3 3
SERIES: FR#3COMPR

ITM	PART DESCRIPTION	19DV-FR#3	
		COMPR. SIZE	
COMPRESSOR GROUP			
464	SUCTION HOUSING REF. (1ST STAGE)	02DV34014601	
465	BLADE RING ASY. (1ST STAGE) (SEE N	02DV34014413	
	Used in compressors with code 334. Refer to significance chart.		
466	BLADE RING ASY. (1ST STAGE) (SEE N	02DV34014414	
	Used in compressors with code 344. Refer to significance chart.		
467	BLADE RING ASY. (1ST STAGE) (SEE N	02DV34014415	
	Used in compressors with code 354. Refer to significance chart.		
468	BLADE RING ASY. (1ST STAGE) (SEE N	02DV34014416	
	Used in compressors with code 364. Refer to significance chart.		
469	BUSHING	(18)	KT53XL095
470	DRIVE PULLEY	02DV35000801	
471	BLADE PULLEY	(8)	19D211242
472	PIN	(9)	19D212482
473	PIPE PLUG (1/4")	(9)	CA64AT051
474	BUSHING	(9)	KT53XL055
475	IDLER PULLEY	(9)	19D211252
476	CABLE ASSEMBLY	19D31192	
477	JAM NUT	(2)	AT40AA172
478	SET SCREW (#10-24 X 3/4")	(2)	AE13AR128
479	INLET GUIDE VANE DRIVE SHAFT	02DV35007401	
480	KEY	19D211391	
481	ROLL PIN	AX14CA031	
482	GUIDE VANE ACTUATOR MOTOR (115V)	HF26BM034	
483	GUIDE VANE ACTUATOR MOTOR (220V)	HF26BM064	
484	ADAPTER COUPLING (ACTUATOR)	02DV45005401	
485	SUPPORT BRACKET	02DV45008101	
486	SET SCREW (ACTUATOR)	AE19AR196	
487	COUPLING (ACTUATOR)	02XRS4009601	
488	COUPLING (1/4 MPT X 3/8 MFL)	DD07DA103	
489	SEAL HOUSING BUSHING	02DV45012201	
490	THRUST WASHER	AU51YA391	
491	ROLL PIN	AX14CA135	
492	O-RING (ACTUATOR)	KK71EH212	
493	O-RING (ACTUATOR)	KK71EH224	
494	BUSHING	KT53XL095	
495	O-RING (BLADE ASY/HOUSING)	KK71EH281	
496	SUCTION HOUSING REF. (2ND STAGE)	02DV34014801	
497	BLADE RING ASY. (2ND STAGE) (SEE N	02DV34014523	
	Used in compressors with code 334. Refer to significance chart.		
498	BLADE RING ASY. (2ND STAGE) (SEE N	02DV34014524	
	Used in compressors with code 344. Refer to significance chart.		
499	BLADE RING ASY. (2ND STAGE) (SEE N	02DV34014525	
	Used in compressors with code 354. Refer to significance chart.		
500	BLADE RING ASY. (2ND STAGE) (SEE N	02DV34014526	
	Used in compressors with code 364. Refer to significance chart.		



HERMETIC CENTRIFUGAL
LIQUID CHILLER

19DV

SIZE: 3 3
SERIES: FR#3COMPR

ITM	PART DESCRIPTION	19DV-FR#3	
		COMPR. SIZE	
COMPRESSOR GROUP			
501	BUSHING	(18)	KT53XL093
502	DRIVE PULLEY		02DV3500801
503	BLADE PULLEY	(8)	19D211242
504	PIN	(9)	19D212482
505	PIPE PLUG (1/4")	(9)	CA64AT051
506	BUSHING	(9)	KT53XL055
507	IDLER PULLEY	(9)	19D211252
508	CABLE ASSEMBLY		19D21192
509	JAM NUT	(2)	AT40AA172
510	SET SCREW (#10-24 X 3/4")	(2)	AE13AR128
511	INLET GUIDE VANE DRIVE SHAFT		02DV35008401
512	KEY		19D211391
513	ROLL PIN		AX14CA031
514	GUIDE VANE ACTUATOR MOTOR (115V)		HF26BM033
515	GUIDE VANE ACTUATOR MOTOR (220V)		HF26BM063
516	ADAPTER COUPLING (ACTUATOR)		02DV45005401
517	SUPPORT BRACKET		02DV45005201
518	SET SCREW (ACTUATOR)		AE19AR196
519	COUPLING (ACTUATOR)		02XR54009601
520	SEAL HOUSING BUSHING		02DV45012201
521	THRUST WASHER		AU51YA391
522	ROLL PIN		AX14CA135
523	O-RING (ACTUATOR)		KK71EH212
524	O-RING (ACTUATOR)		KK71EH224
525	BUSHING		KT53XL093
526	O-RING (BLADE ASY/HOUSING)		KK71EH276
527	UNION COUPLING (1/4 MPT X 1/4 MFL)		DD07DA104
528	BEARING SPACER (2ND STAGE)		02DV45003901
529	SHAFT LABYRINTH (1ST STAGE)		02DV45033101
530	BALANCING PISTON LABYRINTH (2ND STAG)		02DV45037601
531	CHECK VALVE (SHROUD)	(2)	02DV44022201
532	ELBOW (90 DEG.)		DC85SA201
533	REFRIGERANT RECLAIM TUBE ASSEMBLY		02DV34005601
534	EDUCTOR		INCLUDED
535	O-RING (.468 I.D.)		KK71EH906
536	X		02DV44031301
537	ELBOW (90 DEG.)		DC85SA101
538	REFRIGERANT RECLAIM TUBE ASSEMBLY		02DV44009501
539	REFRIGERANT RECLAIM PLUG		02DV45009701
540	O-RING (.364 ID)	(4)	KK71EH012
541	O-RING (.644 ID)	(4)	KK71EH908
542	O-RING (.500 ID)	(6)	KK71EH014
543	REFRIGERANT STRAINER		KH11QD070
544	ADAPTER		02DV05000601
545	PLUG (3/4-16)		02DV05001006

PARTS LIST CATALOG

PARTS LIST PAGE: 007

CATALOG NO. : REV.
SUPERSEDES : REV.

NOTE: SEE "CATALOG NOTES" ON LAST PAGE FOR EXPLANATION OF SYMBOLISM.



HERMETIC CENTRIFUGAL
LIQUID CHILLER

19DV

SIZE: 3 3
SERIES: FR#3COMPR

ITM	PART DESCRIPTION	19DV-FR#3		
		COMPR. SIZE		
COMPRESSOR GROUP				
546	O-RING (2ND STAGE SHROUD)	KK71EH457		
547	O-RING (1ST STAGE SHROUD)	KK71EH465		
548	PURGE TUBE ASSEMBLY	02DV34005001		
549	CHECK VALVE (1/2")	02DV45015301		
550	O-RING (REFRIG. SUPPLY)	(2) KK71EW907		
551	ADAPTER (13/16-16 & 3/4-16)	02DV05000001		
552	SENSOR WELL	19EF5011212		
553	IMPELLER EYE LABY.(2ND STAGE)(SEE NO	02DV35015423		
	Used in compressors with codes	432 & 434. Refer to significance chart.		
554	IMPELLER EYE LABY.(2ND STAGE)(SEE NO	02DV35015424		
	Used in compressors with codes	442 & 444. Refer to significance chart.		
555	IMPELLER EYE LABY.(2ND STAGE)(SEE NO	02DV35015425		
	Used in compressors with codes	452 & 454. Refer to significance chart.		
556	IMPELLER EYE LABY.(2ND STAGE)(SEE NO	02DV35015426		
	Used in compressors with codes	462 & 464. Refer to significance chart.		
557	IMPELLER (2ND STAGE) (SEE NOTE)	02DV35019634		
	Used in compressors with code	432. Refer to significance chart.		
558	IMPELLER (2ND STAGE) (SEE NOTE)	02DV35019644		
	Used in compressors with code	434. Refer to significance chart.		
559	IMPELLER (2ND STAGE) (SEE NOTE)	02DV35019654		
	Used in compressors with code	442. Refer to significance chart.		
560	IMPELLER (2ND STAGE) (SEE NOTE)	02DV35019664		
	Used in compressors with code	444. Refer to significance chart.		
561	IMPELLER LOCKNUT (2ND STAGE)	02DV35006901		
562	IMPELLER NOSE PIECE (2ND STAGE)	02DV35005301		
563	O-RING (SHROUD TO SUCTION HSG)	(2) 02DV45007603		
564	SHROUD (2ND STAGE) (SEE NOTE)	02DV35013223		
	Used in compressors with code	334. Refer to significance chart.		
565	SHROUD (2ND STAGE) (SEE NOTE)	02DV35013224		
	Used in compressors with code	344. Refer to significance chart.		
566	SHROUD (2ND STAGE) (SEE NOTE)	02DV35013225		
	Used in compressors with code	354. Refer to significance chart.		
567	SHROUD (2ND STAGE) (SEE NOTE)	02DV35013226		
	Used in compressors with code	364. Refer to significance chart.		
568	SHROUD (2ND STAGE IGV)	CONTACT.RCD		
569	FLARE SEAL CAP	DD19CA061		
570	X	X		
571	X	X		
572	LOW PRESSURE VALVE ASSEMBLY	06DA403844		
CONTROL GROUP				
600	MAIN CONTROL PANEL REFERENCE	03DV04000101LC		
601	CONTROL BOX (SHEET METAL)	03DV04000201LC		
602	DOOR ASSEMBLY	03DV04000401LC		
603	DOOR ASSEMBLY	03DV04000501LC		
604	HINGE	(6) KA16Z2001		

PARTS LIST CATALOG

PARTS LIST PAGE: 008

CATALOG NO. : REV.
SUPERSEDES : REV.

NOTE: SEE "CATALOG NOTES" ON LAST PAGE FOR EXPLANATION OF SYMBOLISM.



HERMETIC CENTRIFUGAL
LIQUID CHILLER

19DV

SIZE: 3 3
SERIES: FR#3COMPR

ITM	PART DESCRIPTION	19DV-FR#3			
		COMPR. SIZE			
CONTROL GROUP					
605	DOOR LATCH	(2)	KA05SS001		
606	ENCLOSURE FILTER COVER	(2)	HX29Z2001		
607	TRANSFORMER	(2)	HT01EA100		
608	ENCLOSURE FILTER	(2)	KH03HZ400		
609	TERMINAL BLOCK	(3)	HY84EA029		
610	CHILLER CONTROL MODULE (IOB BOARDS)	(4)	CEPL131092-03-R-I		
Important! Before installing new module refer to "Start-Up, Operation, and Maintenance Instructions for proper DIP Switch settings.					
611	TERMINAL BLOCK	(97)	HY84EG001		
612	TERMINAL BLOCK	(13)	HY84EA001		
613	POWER CONVERTER		HT65AZ122		
614	LIQUID LEVEL SWITCH (HIGH FLOAT)		03DV05104503LC		
615	CIRCUIT BREAKER (10 AMP)	(2)	HH83LC002		
616	CIRCUIT BREAKER (8 AMP)		HH83LC001		
617	FUSE (5 AMP)	(2)	HY10KB153		
618	CONTACTOR (1C)		HH13ZB001		
619	CONTACTOR (2C, 3C, 4C)	(2)	HH14ZA002		
620	RELAY (HFR & HPR)	(2)	HN79EZ005		
621	RELAY SOCKET (HFR & HPR)	(2)	HN79EZ006		
622	CABLE ASY (COM. SIOB J13)		03DV04011701LC		
623	CABLE ASY (COM. SIOB J12)		03DV04010701LC		
624	CABLE ASY (HI FLOAT LEVEL SWITCH)		03DV04013501LC		
625	CABLE ASY (HGBP VALVE PWR)		03DV04031001LC		
626	CONDUIT ASY (GUIDE VANE #1 PWR)		03DV04010802LC		
627	CONDUIT ASY (PURGE PWR)		03DV04010901LC		
628	CONDUIT ASY (GUIDE VANE #2 PWR)		03DV04010803LC		
629	CONDUIT ASY (REF. PUMP PWR)		03DV04011001LC		
630	CONDUIT ASY (ECON BP PWR & CTRL)		03DV04071001LC		
631	CONDUIT ASY (ECON IS PWR & CTRL)		03DV04051002LC		
632	CONDUIT ASY (VAP VENT PWR & CTRL)		03DV04051003LC		
633	WIRE HARNESS (CONTROL BOX)		03DV05002201LC		
634	WIRE HARNESS (NOTE)		03DV05103901LC		
635	CABLE ASY (COND. DISC. TEMP)		HH79NZ032		
636	CABLE ASY (EVAP. REFRIG. TEMP)		HH79NZ032		
637	CABLE ASY (IN/OUT WATER TEMP)	(4)	HH79NZ032		
638	CABLE ASY (BEARING REFRIG. TEMP)		HH79NZ032		
639	CABLE ASY (EVAP. PRESS.)		19XB660008		
640	CABLE ASY (COND. PRESS.)		19XB660008		
641	CABLE ASY (PUMP OUTLET PRESS.)		19XB660008		
642	CABLE ASY (PUMP INLET PRESS.)		19XB660008		
643	CABLE ASY (BEARING OUTLET PRESS.)		19XB660008		
644	CABLE ASY (BEARING INLET PRESS.)		19XB660008		
645	TERMINAL JUMPER (2-PIN)	(30)	HY680106		
646	ACTUATOR W/CABLE (CONTROL VALVES)	(2)	19DV45025201LC		
647	MODULE (CELLULAR CONNECTION)		HK72Z2001		



HERMETIC CENTRIFUGAL
LIQUID CHILLER

19DV

SIZE: 3 3
SERIES: FR#3COMPR

ITM	PART DESCRIPTION	19DV-FR#3			
		COMPR. SIZE			
CONTROL GROUP					
648	SWITCH (ETHERNET CONN.)	HY09ZZ001			
649	ANTENNA	HY08ZZ005			
650	EMERGENCY STOP BUTTON	HR52ZZ002			
651	CONTROLS ARRANGEMENT DWG (REF. ONLY)	X			
652	CONTROLS ARRANGEMENT DWG (REF. ONLY)	19DV44015801LC			
653	SENSOR WELL	(4) 19EF5011212			
654	CABLE ASY (HIGH PRESS. SWITCH)	2000540994			
655	HIGH PRESSURE SWITCH	HK08ZZ028			
656	TRANSDUCER (PRESS.)	(6) HK05YZ003			
Evap. Pressure, Cond. Pressure, Pump Inlet Pressure, Bearing Inlet Pressure and Bearing Outlet Pressure.					
657	HMI DISPLAY BOX ASY. (CCN ENABLED)	X			
658	HMI DISPLAY BOX ASY. (BACNET ENABLED)	19XF14011401			
659	SCREEN ASSEMBLY (HMI CCN ENABLED)	X			
660	SCREEN ASSEMBLY (HMI BACNET ENABLE)	RC6600034			
661	SCREEN ASY MOUNTING CLIPS(BAG OF 6	907-017060-3-R-WH			
662	TERMINAL BLOCK	ELD-6-005			
663	WIRE HARNESS (COMM/POWER)	19XFHHLA-A00			
664	WIRE HARNESS (CONTROL)	19XFHHLA-A21			
665	PLATE,WIRING	19XF15000101			
666	COVER ASSEMBLY,FRONT	19XF15021601			
667	HINGE	1069-U6			
668	LATCH,DRAW	TL-20-201-52			
669	KEEPER	TL-17-201-52			
670	COMMON POINT TEMP SENSOR (20' CABLE)	(4) HH79NZ022			
COOLER GROUP					
700	EVAPORATOR/COOLER DRAWING (REF. ONLY)	10DVG4006901LC			
701	SENSOR WELL	19EF5011212			
702	MIST ELIMINTOR (INTERNAL)	(4) 10DVG4013302LC			
Used in machines with a "2" in the 7th position of model number.					
703	MIST ELIMINTOR (INTERNAL)	(4) 10DVG4013303LC			
Used in machines with a "4" in the 7th position of model number.					
704	BALL VALVE (1/2")	EP71CZ182			
705	SIGHGLASS (1/2")	(2) KM36BS163			
706	SIGHTGLASS O-RING	KK71EH920			
707	BALL VALVE (1-1/2")	EP71CQ422			
708	EVAPORATOR/COOLER TUBES ("E" FRAME)	TUBE.QUANTITY			
To obtain the proper tubes for particular machine contact your Carrier (RCD) representative. You must provide machine serial number.					
708 A	EVAP./COOLER TUBE QTY.(FR# E20 & E40	X			
708 B	EVAP./COOLER TUBE QTY.(FR# E21 & E41	X			
708 C	EVAP./COOLER TUBE QTY.(FR# E22 & E42	X			
708 D	EVAP./COOLER TUBE QTY.(FR# E23 & E43	X			
708 E	EVAP./COOLER TUBE QTY.(FR# E24 & E44	X			
708 F	EVAP./COOLER TUBE QTY.(FR# E25 & E45	X			



HERMETIC CENTRIFUGAL
LIQUID CHILLER

19DV

SIZE: 3
SERIES: FR#3COMPR

ITM	PART DESCRIPTION	19DV-FR#3			
		COMPR. SIZE			
COOLER GROUP					
708 G	EVAP./COOLER TUBE QTY.(FR# E26 & E46	X			
708 H	EVAP./COOLER TUBE QTY.(FR# E27 & E47	X			
708 I	EVAP./COOLER TUBE QTY.(FR# E28 & E48	X			
708 J	EVAP./COOLER TUBE QTY.(FR# E29 & E49	X			
708 K	EVAP./COOLER TUBE QTY.(FR# E2A & E4A	X			
708 L	EVAP./COOLER TUBE QTY.(FR# E2B & E4B	X			
708 M	EVAP./COOLER TUBE QTY.(FR# E2C & E4C	X			
708 N	EVAP./COOLER TUBE QTY.(FR# E2D & E4D	X			
708 O	EVAP./COOLER TUBE QTY.(FR# E2E & E4E	X			
708 P	EVAP./COOLER TUBE QTY.(FR# E2F & E4F	X			
708 Q	EVAP./COOLER TUBE QTY.(FR# E2G & E4G	X			
708 R	EVAP./COOLER TUBE QTY.(FR# E2H & E4H	X			
708 S	EVAP./COOLER TUBE QTY.(FR# E2J & E4J	X			
708 T	EVAP./COOLER TUBE QTY.(FR# E2K & E4K	X			
709	EVAPORATOR/COOLER TUBES ("F" FRAME)	TUBE QUANTITY			
	To obtain the proper tubes for particular machine contact your Carrier (RCD) representative. You must provide machine serial number.				
709 A	EVAP./COOLER TUBE QTY.(FR# F20 & F40	307			
709 B	EVAP./COOLER TUBE QTY.(FR# F21 & F41	335			
709 C	EVAP./COOLER TUBE QTY.(FR# F22 & F42	377			
709 D	EVAP./COOLER TUBE QTY.(FR# F23 & F43	419			
709 E	EVAP./COOLER TUBE QTY.(FR# F24 & F44	461			
709 F	EVAP./COOLER TUBE QTY.(FR# F25 & F45	295			
709 G	EVAP./COOLER TUBE QTY.(FR# F26 & F46	325			
709 H	EVAP./COOLER TUBE QTY.(FR# F27 & F47	363			
709 I	EVAP./COOLER TUBE QTY.(FR# F28 & F48	405			
709 J	EVAP./COOLER TUBE QTY.(FR# F29 & F49	447			
709 K	EVAP./COOLER TUBE QTY.(FR# F2A & F4A	169			
709 L	EVAP./COOLER TUBE QTY.(FR# F2B & F4B	189			
709 M	EVAP./COOLER TUBE QTY.(FR# H2C & H4C	209			
709 N	EVAP./COOLER TUBE QTY.(FR# H2D & H4D	229			
709 O	EVAP./COOLER TUBE QTY.(FR# H2E & H4E	249			
709 P	EVAP./COOLER TUBE QTY.(FR# H2F & H4F	157			
709 Q	EVAP./COOLER TUBE QTY.(FR# H2G & H4G	175			
709 R	EVAP./COOLER TUBE QTY.(FR# H2H & H4H	197			
709 S	EVAP./COOLER TUBE QTY.(FR# H2J & H4J	215			
709 T	EVAP./COOLER TUBE QTY.(FR# H2K & H4K	239			
729	EVAP./COOLER DIVISION PLATE GASKET	19XB680001			
730 A	EVAP./COOLER WATER BOX GASKET (150#)	UNRELEASED			
	Used on frame "E" vessel water Victaulic connections. Typical	boxes with 3 pass, dished heads and both ends.			
730 B	EVAP./COOLER WATER BOX GASKET (150#)	(2) 09XR05007004			
	Used on frame "F" vessel water Victaulic connections. Typical	boxes with 3 pass, dished heads and both ends.			
731 A	EVAP./COOLER WATER BOX GASKET (150#)	UNRELEASED			



HERMETIC CENTRIFUGAL
LIQUID CHILLER

19DV

SIZE: 3 3
SERIES: FR#3COMPR

ITM	PART DESCRIPTION	19DV-FR#3			
		COMPR. SIZE			
	COOLER GROUP				
	Used on frame "E" vessel water boxes with 3 pass, dished heads and flanged connections. Typical both ends.				
731 B	EVAP./COOLER WATER BOX GASKET (150#)	(2) 09XR05007004			
	Used on frame "F" vessel water boxes with 3 pass, dished heads and flanged connections. Typical both ends.				
732 A	EVAP./COOLER WATER BOX GASKET (150#)	UNRELEASED			
	Used on frame "E" vessel water boxes with 2 pass, dished heads and Victaulic connections. Typical both ends.				
732 B	EVAP./COOLER WATER BOX GASKET (150#)	(2) 09XR05007004			
	Used on frame "F" vessel water boxes with 2 pass, dished heads and Victaulic connections. Typical both ends.				
733 A	EVAP./COOLER WATER BOX GASKET (150#)	UNRELEASED			
	Used on frame "E" vessel water boxes with 2 pass, dished heads and flanged connections. Typical both ends.				
733 B	EVAP./COOLER WATER BOX GASKET (150#)	(2) 09XR05007004			
	Used on frame "F" vessel water boxes with 2 pass, dished heads and flanged connections. Typical both ends.				
734 A	EVAP./COOLER WATER BOX GASKET (150#)	UNRELEASED			
	Used on frame "E" vessel water boxes with 1 pass, dished heads and Victaulic connections. Typical both ends.				
734 B	EVAP./COOLER WATER BOX GASKET (150#)	(2) 09XR05007004			
	Used on frame "F" vessel water boxes with 1 pass, dished heads and Victaulic connections. Typical both ends.				
735 A	EVAP./COOLER WATER BOX GASKET (150#)	UNRELEASED			
	Used on frame "E" vessel water boxes with 1 pass, dished heads and flanged connections. Typical both ends.				
735 B	EVAP./COOLER WATER BOX GASKET (150#)	(2) 09XR05007004			
	Used on frame "F" vessel water boxes with 1 pass, dished heads and flanged connections. Typical both ends.				
736 A	EVAP./COOLER WATER BOX GASKET (150#)	UNRELEASED			
	Used on frame "E" vessel marine water boxes with 3 pass. typical both ends.				
736 B	EVAP./COOLER WATER BOX GASKET (150#)	(2) 10DVF5003201LC			
	Used on frame "F" vessel marine water boxes with 3 pass. typical both ends				
737 A	EVAP./COOLER WATER BOX GASKET (150#)	UNRELEASED			
	Used on frame "E" vessel marine water boxes with 1 pass. typical both ends.				
737 B	EVAP./COOLER WATER BOX GASKET (150#)	(2) 10DVF5003201LC			
	Used on frame "F" vessels marine water boxes with 1 pass. typical both ends.				
738 A	EVAP./COOLER WATER BOX GASKET (150#)	UNRELEASED			
	Used on frame "E" vessel marine water boxes with 2 pass. Water box end				
738 B	EVAP./COOLER WATER BOX GASKET (150#)	10DVF5003201LC			
	Used on frame "F" vessel marine water boxes with 2 pass. Water box end				



HERMETIC CENTRIFUGAL
LIQUID CHILLER

19DV

SIZE: 3 3
SERIES: FR#3COMPR

ITM	PART DESCRIPTION	19DV-FR#3			
		COMPR. SIZE			
COOLER GROUP					
739 A	EVAP./COOLER WATER BOX GASKET (150#)	UNRELEASED			
	Used on frame "E" vessel marine water boxes with 2 pass. Plain dished head end.				
739 B	EVAP./COOLER WATER BOX GASKET (150#)	09XR05007004			
	Used on frame "F" vessel marine water box with 2 pass. Plain dished head end.				
CONDENSER GROUP					
750	CONDENSER DRAWING (REF. ONLY)	09DVF4003701LC			
751	CONDENSER FLOAT VALVE (CODE HH)	09DVF410002LC			
752	CONDENSER FLOAT VALVE (CODE HG)	09DVF410003LC			
753	CONDENSER FLOAT VALVE (CODE HF)	09DVF410004LC			
754	FLOAT BALL	08DV45070201LC			
762	GASKET (14")	09DVF5102701LC			
763	BALL VALVE (1/2")	EP71CQ183			
764	SCREEN ASSEMBLY	08DV44102102LC			
766	SIGHTGLASS	(2) KM36BS163			
767	SIGHTGLASS O-RING	KK71EH920			
768	BALL VALVE (1")	EP71CQ306			
769	CONDENSER TUBES ("E" FRAME)	TUBE. QUANTITY			
	To obtain the proper tubes for particular machine contact your Carrier (RCD) representative. You must provide machine serial number.				
769 A	CONDENSER TUBE QTY.(FR# E22 & E42)	X			
769 B	CONDENSER TUBE QTY.(FR# E23 & E43)	X			
769 C	CONDENSER TUBE QTY.(FR# E24 & E44)	X			
769 D	CONDENSER TUBE QTY.(FR# E27 & E47)	X			
769 E	CONDENSER TUBE QTY.(FR# E28 & E48)	X			
769 F	CONDENSER TUBE QTY.(FR# E29 & E49)	X			
769 G	CONDENSER TUBE QTY.(FR# E2C & E4C)	X			
769 H	CONDENSER TUBE QTY.(FR# E2D & E4D)	X			
769 I	CONDENSER TUBE QTY.(FR# E2E & E4E)	X			
769 J	CONDENSER TUBE QTY.(FR# E2H & E4H)	X			
769 K	CONDENSER TUBE QTY.(FR# E2J & E4J)	X			
769 L	CONDENSER TUBE QTY.(FR# E2K & E4K)	X			
770	CONDENSER TUBES ("F" FRAME)	TUBE. QUANTITY			
	To obtain the proper tubes for particular machine contact your Carrier (RCD) representative. You must provide machine serial number.				
770 A	CONDENSER TUBE QTY.(FR# F22 & F42)	482			
770 B	CONDENSER TUBE QTY.(FR# F23 & F43)	542			
770 C	CONDENSER TUBE QTY.(FR# F24 & F44)	589			
770 D	CONDENSER TUBE QTY.(FR# F27 & F47)	445			
770 E	CONDENSER TUBE QTY.(FR# F28 & F48)	495			
770 F	CONDENSER TUBE QTY.(FR# F29 & F49)	550			
770 G	CONDENSER TUBE QTY.(FR# F2C & F4C)	262			
770 H	CONDENSER TUBE QTY.(FR# F2D & F4D)	287			
770 I	CONDENSER TUBE QTY.(FR# F2E & F4E)	321			



HERMETIC CENTRIFUGAL
LIQUID CHILLER

19DV

SIZE: 3
SERIES: FR#3COMPR

ITM	PART DESCRIPTION	19DV-FR#3			
		COMPR. SIZE			
CONDENSER GROUP					
770 J	CONDENSER TUBE QTY.(FR# F2H & F4H)	237			
770 K	CONDENSER TUBE QTY.(FR# F2J & F4J)	262			
770 L	CONDENSER TUBE QTY.(FR# F2K & F4K)	298			
782	CONDENSER DIVISION PLATE GASKET	19XB680001			
783 A	CONDENSER WATER BOX GASKET (150#)	UNRELEASED			
	Used on frame "E" vessel water boxes with 3 pass, dished heads and Vitaulic connections. Typical both ends.				
783 B	CONDENSER WATER BOX GASKET (150#)	(2) 09XR05007001			
	Used on frame "F" vessel water boxes with 3 pass, dished heads and Vitaulic connections. Typical both ends.				
784 A	CONDENSER WATER BOX GASKET (150#)	UNRELEASED			
	Used on frame "E" vessel water boxes with 3 pass, dished heads and flanged connections. Typical both ends.				
784 B	CONDENSER WATER BOX GASKET (150#)	(2) 09XR05007001			
	Used on frame "F" vessel water boxes with 3 pass, dished heads and flanged connections. Typical both ends.				
785 A	CONDENSER WATER BOX GASKET (150#)	UNRELEASED			
	Used on frame "E" vessel water boxes with 2 pass, dished heads and Vitaulic connections. Typical both ends.				
785 B	CONDENSER WATER BOX GASKET (150#)	(2) 09XR05007001			
	Used on frame "F" vessel water boxes with 2 pass, dished heads and Vitaulic connections. Typical both ends.				
786 A	CONDENSER WATER BOX GASKET (150#)	UNRELEASED			
	Used on frame "E" vessel water boxes with 2 pass, dished heads and flanged connections. Typical both ends.				
786 B	CONDENSER WATER BOX GASKET (150#)	(2) 09XR05007001			
	Used on frame "F" vessel water boxes with 2 pass, dished heads and flanged connections. Typical both ends.				
787 A	CONDENSER WATER BOX GASKET (150#)	UNRELEASED			
	Used on frame "E" vessel water boxes with 1 pass, dished heads and Vitaulic connections. Typical both ends.				
787 B	CONDENSER WATER BOX GASKET (150#)	(2) 09XR05007001			
	Used on frame "F" vessel water boxes with 1 pass, dished heads and Vitaulic connections. Typical both ends.				
788 A	CONDENSER WATER BOX GASKET (150#)	UNRELEASED			
	Used on frame "E" vessel water boxes with 1 pass, dished heads and flanged connections. Typical both ends.				
788 B	CONDENSER WATER BOX GASKET (150#)	(2) 09XR05007001			
	Used on frame "F" vessel water boxes with 1 pass, dished heads and flanged connections. Typical both ends.				
789 A	CONDENSER WATER BOX GASKET (150#)	UNRELEASED			
	Used on frame "E" vessel marine water boxes with 3 pass. Typical both ends.				
789 B	CONDENSER WATER BOX GASKET (150#)	(2) 09DV5000601LC			
	Used on frame "F" vessel marine water boxes with 3 pass. Typical both ends.				

PARTS LIST CATALOG

PARTS LIST PAGE: 014

CATALOG NO. : REV.
SUPERSEDES : REV.

NOTE: SEE "CATALOG NOTES" ON LAST PAGE FOR EXPLANATION OF SYMBOLISM.



HERMETIC CENTRIFUGAL
LIQUID CHILLER

19DV

SIZE: 3 3
SERIES: FR#3COMPR

ITM	PART DESCRIPTION	19DV-FR#3		
		COMPR. SIZE		
CONDENSER GROUP				
791 A	CONDENSER WATER BOX GASKET (150#)	UNRELEASED		
	Used on frame "E" vessel marine water boxes with 2 pass. Dished head end only.			
791 B	CONDENSER WATER BOX GASKET (150#)	09XR05007001		
	Used on frame "F" vessel marine water boxes with 2 pass. Dished head end only.			
792 A	CONDENSER WATER BOX GASKET (150#)	UNRELEASED		
	Used on frame "E" vessel marine water boxes with 2 pass. Marine box end only.			
792 B	CONDENSER WATER BOX GASKET (150#)	09DVF5000601LC		
	Used on frame "F" vessel marine water boxes with 2 pass. Marine box end only.			
793 A	CONDENSER WATER BOX GASKET (150#)	UNRELEASED		
	Used on frame "E" vessel marine water boxes with 1 pass, Typical both ends.			
793 B	CONDENSER WATER BOX GASKET (150#)	(2) 09DVF5000601LC		
	Used on frame "F" vessel marine water boxes with 1 pass, Typical both ends.			
ECONOMIZER GROUP				
800	GASKET (14")	09DVF5102701LC		
801	BALL VALVE (1")	EP71CQ306		
802	SIGHTGLASS	(2) KM36BS163		
803	SIGHTGLASS O-RING	KK71EH920		
804	DAMPER VALVE ASSEMBLY (3")	19DV45000124GS		
804 A	VALVE	19DV680001		
804 B	ACTUATOR	RC6800252		
804 C	ADAPTER KIT	19DV680003		
806	DAMPER VALVE ASSEMBLY (6")	X		
807	REBUILD KIT ?	X		
808	FLOAT VALVE ASSEMBLY (VALVE CODE LH)	08DV34065102LC		
809	FLOAT VALVE ASSEMBLY (VALVE CODE LG)	08DV34065103LC		
810	FLOAT VALVE ASSEMBLY (VALVE CODE LF)	08DV34065104LC		
811	FLOAT BALL	08DV35070201LC		
812	SCREEN ASSEMBLY	08DV34102101LC		
VARIABLE FREQUENCY DRIVE				
900	VARIABLE FREQ. DRIVE (850A)(380-3-60	32VSS08503002		
	Refer to the Variable Frequency Drive data plate to determine which Drive was installed on machine. Click on appropriate part number for service part list.			
901	VARIABLE FREQ. DRIVE (850A)(416-3-60	32VSS08504002		
	Refer to the Variable Frequency Drive data plate to determine which Drive was installed on machine. Click on appropriate part number for service part list.			
902	VARIABLE FREQ. DRIVE (850A)(460-3-60	32VSS08505002		
	Refer to the Variable Frequency Drive data plate to determine which			



HERMETIC CENTRIFUGAL
LIQUID CHILLER

19DV

SIZE: 3 3
SERIES: FR#3COMPR

ITM	PART DESCRIPTION	19DV-FR#3		
		COMPR. SIZE		
	VARIABLE FREQUENCY DRIVE			
	Drive was installed on machine. Click on appropriate part number for service part list.			
903	VARIABLE FREQ. DRIVE (850A)(400-3-50	32VSS08509002		
	Refer to the Variable Frequency Drive data plate to determine which Drive was installed on machine. Click on appropriate part number for service part list.			
904	VARIABLE FREQ. DRIVE (680A)(380-3-60	32VSS06803002		
	Refer to the Variable Frequency Drive data plate to determine which Drive was installed on machine. Click on appropriate part number for service part list.			
905	VARIABLE FREQ. DRIVE (680A)(416-3-60	32VSS06804002		
	Refer to the Variable Frequency Drive data plate to determine which Drive was installed on machine. Click on appropriate part number for service part list.			
906	VARIABLE FREQ. DRIVE (680A)(460-3-60	32VSS06805002		
	Refer to the Variable Frequency Drive data plate to determine which Drive was installed on machine. Click on appropriate part number for service part list.			
907	VARIABLE FREQ. DRIVE (680A)(400-3-50	32VSS06809002		
	Refer to the Variable Frequency Drive data plate to determine which Drive was installed on machine. Click on appropriate part number for service part list.			
908	VARIABLE FREQ. DRIVE (850A)(380-3-60	32VSH08503002		
	Refer to the Variable Frequency Drive data plate to determine which Drive was installed on machine. Click on appropriate part number for service part list.			
909	VARIABLE FREQ. DRIVE (850A)(416-3-60	32VSH08504002		
	Refer to the Variable Frequency Drive data plate to determine which Drive was installed on machine. Click on appropriate part number for service part list.			
910	VARIABLE FREQ. DRIVE (850A)(460-3-60	32VSH08505002		
	Refer to the Variable Frequency Drive data plate to determine which Drive was installed on machine. Click on appropriate part number for service part list.			
911	VARIABLE FREQ. DRIVE (850A)(400-3-50	32VSH08509002		
	Refer to the Variable Frequency Drive data plate to determine which Drive was installed on machine. Click on appropriate part number for service part list.			
912	VARIABLE FREQ. DRIVE (680A)(380-3-60	32VSH06803002		
	Refer to the Variable Frequency Drive data plate to determine which Drive was installed on machine. Click on appropriate part number for service part list.			
913	VARIABLE FREQ. DRIVE (680A)(416-3-60	32VSH06804002		
	Refer to the Variable Frequency Drive data plate to determine which Drive was installed on machine. Click on appropriate part number for			



HERMETIC CENTRIFUGAL
LIQUID CHILLER

19DV

SIZE: 3 3
SERIES: FR#3COMPR

ITM	PART DESCRIPTION	19DV-FR#3		
		COMPR. SIZE		
	VARIABLE FREQUENCY DRIVE			
	service part list.			
914	VARIABLE FREQ. DRIVE (680A)(460-3-60	32VSH06805002		
	Refer to the Variable Frequency Drive data plate to determine which Drive was installed on machine. Click on appropriate part number for service part list.			
915	VARIABLE FREQ. DRIVE (680A)(400-3-50	32VSH06809002		
	Refer to the Variable Frequency Drive data plate to determine which Drive was installed on machine. Click on appropriate part number for service part list.			
982	VFD ARRANGEMENT (REF. ONLY)	19DV34017701LC		
983	MAIN POWER BOX GASKET	32VS35020501LC		
984	VFD AHF INTERFACE CABLES	2000943511		
985	CABLE ASSEMBLY	2000927052		
986	CABLE ASSEMBLY	2000927053		
987	CABLE ASSEMBLY	2000927054		
988	CABLE ASSEMBLY	2000927055		
989	DISCONNECT	HR612Y001		
990	HANDLE	0HB274J12		
991	SHAFT	0XP12X280		
992	STANDOFF (1-3/8)	KA562Z301		
993	CABLE ASSEMBLY PKG (12')REF. ONLY)	19DV34011302		
994	CABLE ASSEMBLY PKG (14')REF. ONLY)	19DV34011303		
995	CABLE (U1-T1A) (12' VESSELS)	19DV35001002LC		
996	CABLE (U1-T1A) (14' VESSELS)	19DV35001008LC		
997	CABLE (U2-T1B) (12' VESSELS)	19DV35001003LC		
998	CABLE (U2-T1B) (14' VESSELS)	19DV35001009LC		
999	CABLE (V1-T2A) (12' VESSELS)	19DV35001004LC		
1000	CABLE (V1-T2A) (14' VESSELS)	19DV35001010LC		
1001	CABLE (V2-T2B) (12' VESSELS)	19DV35001005LC		
1002	CABLE (V2-T2B) (14' VESSELS)	19DV35001011LC		
1003	CABLE (W1-T3A) (12' VESSELS)	19DV35001006LC		
1004	CABLE (W1-T3A) (14' VESSELS)	19DV35001012LC		
1005	CABLE (W2-T3B) (12' VESSELS)	19DV35001007LC		
1007	CABLE (W2-T3B) (14' VESSELS)	19DV35001013LC		
1008	CABLE (GROUND) (12' VESSELS)	19DV45007802LC		
1009	CABLE (GROUND) (14' VESSELS)	19DV45007803LC		
1011	PULL BOX GASKET	32VS15012501LC		