



C10 Pro Cordless 29.6V Stick Vacuum Cleaner
KAVACSTC10A
Quick Start Guide

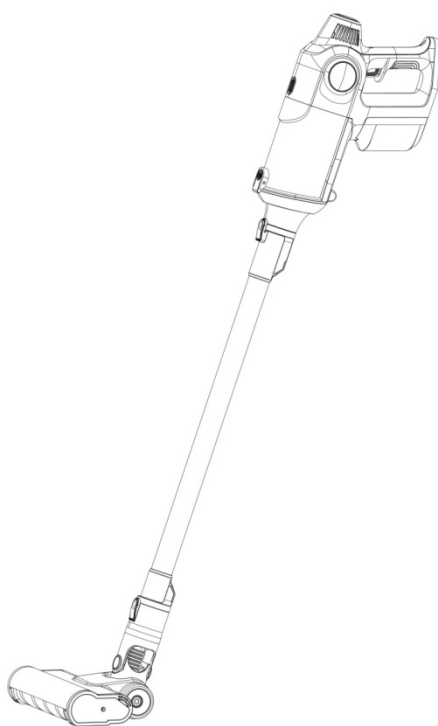


Table of Contents

Safety & Warnings.....	2
Overview	3
Assembly Instructions	4
Operation.....	5
Cleaning & Care.....	6
Specification.....	8
Troubleshooting	8
In The Box.....	9

Safety & Warnings

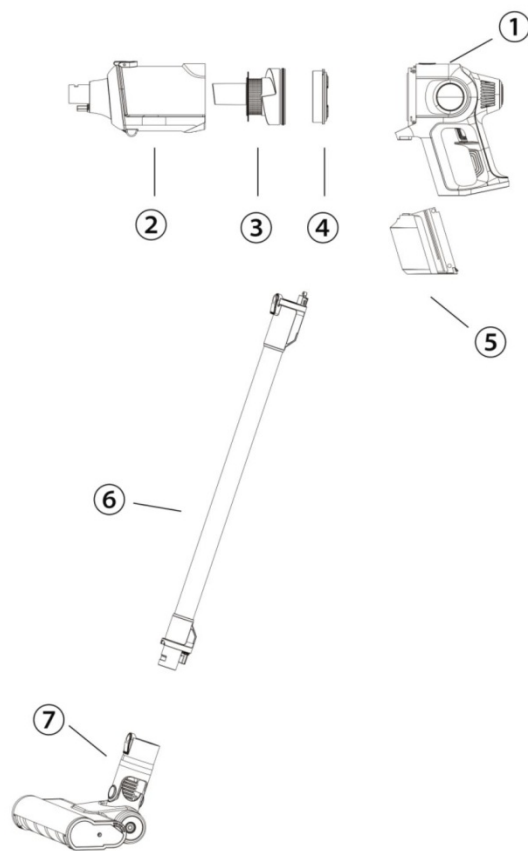
To reduce the risk of fire, electric shock or injury to persons or property, the following basic safety precautions should always be followed.

- Never use this appliance with a damaged cord, plug or other damaged parts. Check if the voltage indicated on the label corresponds with the local mains voltage before you connect the appliance.
- Always ensure the charging connector, cord and plug are dry. Never immerse the appliance into the water or any other liquid. Do not rinse it under a tap except for the dust cup, the HEPA filter and the rolling brush parts.
- Always ensure that your hands are dry before removing the plug from the mains outlet. Never pull the plug out of the mains outlet by its cord.
- Children should always be supervised to ensure that they do not play with this appliance.
- The appliance should not be used by adults or children who lack experience, product knowledge or disability which might cause a hazard, unless they have been correctly instructed.
- Always keep the battery pack far from fire and flammable items.
- Never use this appliance to suck liquids, glass, metal fragments and burning things such as ashes, cigarette butts, matches and so on.
- Always ensure that the dust cup and the battery pack are installed before using.
- If the cord, plug and any other parts get damaged or the appliance fall into water, please stop use and immediately unplug from the main power. Never disassemble the main body, repair or replace any parts by yourself.



Do not use non-original parts with the unit as it may cause damage.

Overview



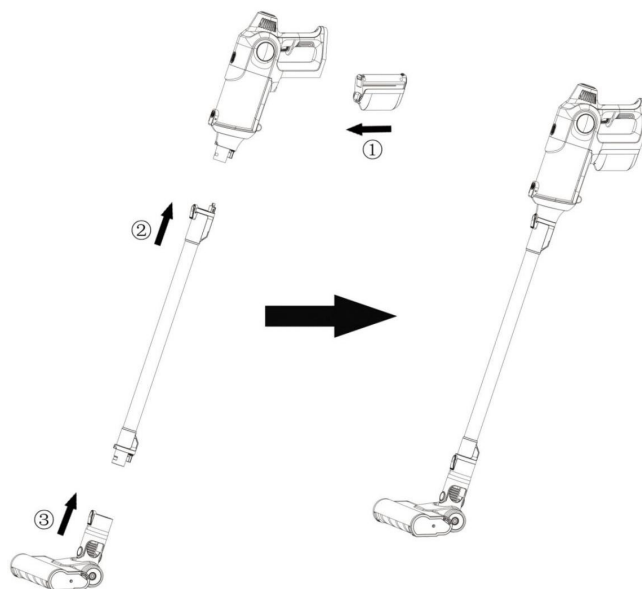
Part List

1. Main unit
2. Dust cup
3. Cyclone cone
4. HEPA filter
5. Battery pack
6. Electrical tube
7. Floor brush

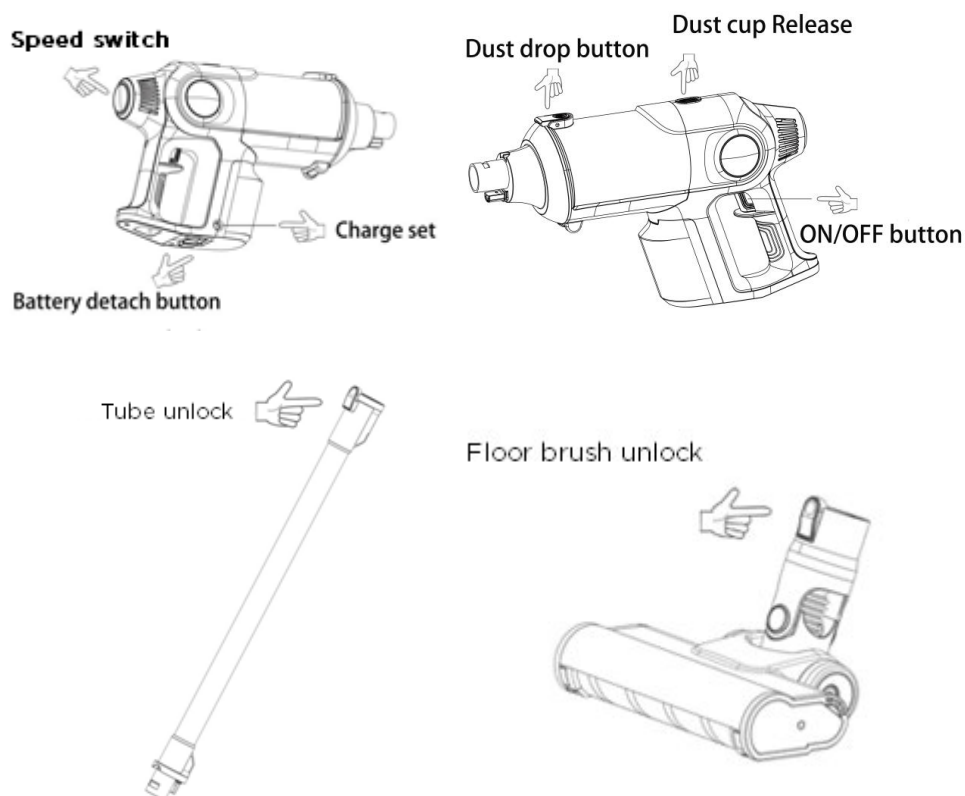
Assembly Instructions

The appliance is packed as separated parts. Simple assembly is required before use:

1. Insert the battery pack into main body as picture shows. You will hear a click sound when fitted.
2. Connect the tube to the main body.
3. Connect the floor brush to the tube.



Functional Buttons

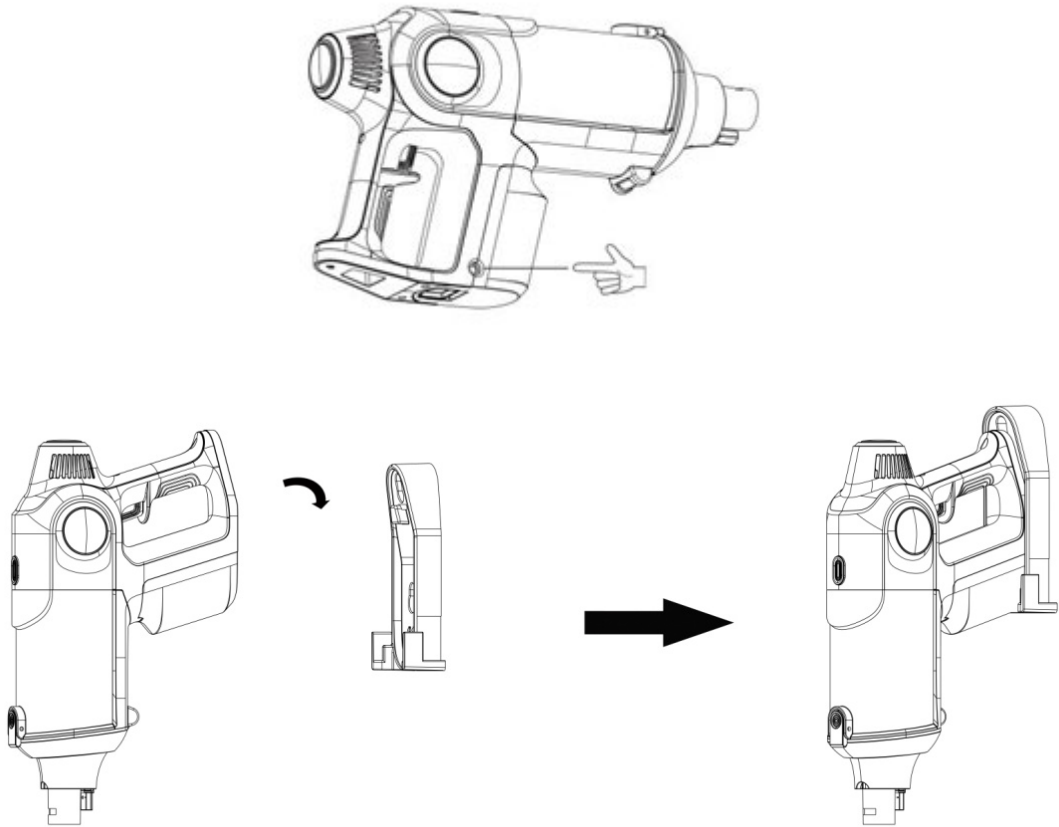


Operation

Lithium Battery Charging

Attention: Please use original charger or the lithium battery can be damaged.

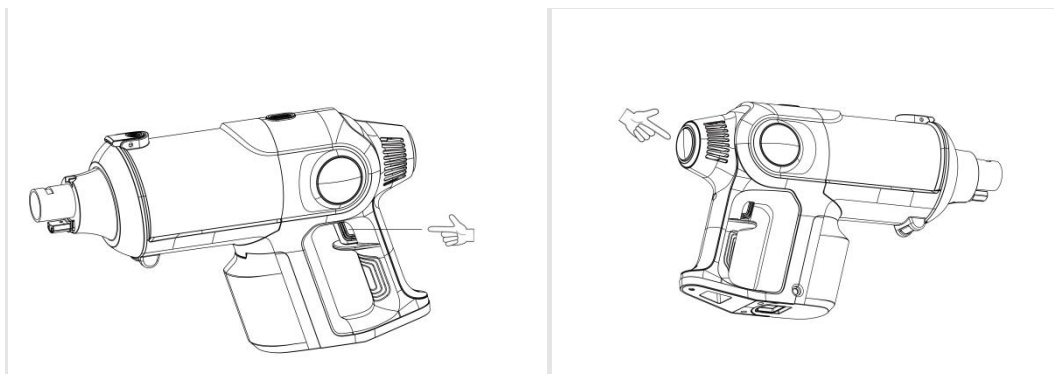
The battery needs to be charged when the indicator lights twinkle. The lights keep twinkling while charging and turn green when fully charged.



Start/stop working and switch speed

Press the ON/OFF button to start and stop the machine.

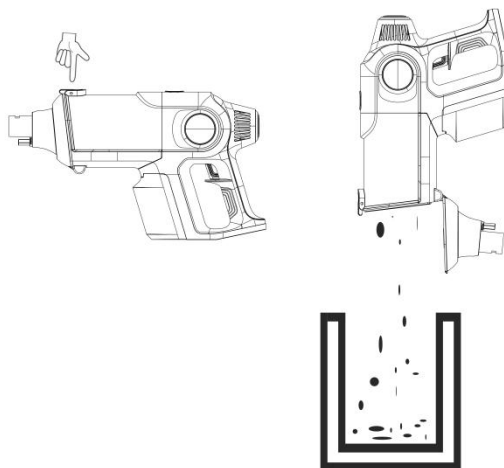
Press the touch panel to switch speeds. The blue light means the highest speed is active and the green light shows the eco speed is active.



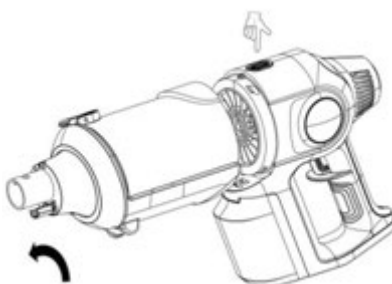
Cleaning & Care

Dust cup cleaning and maintenance

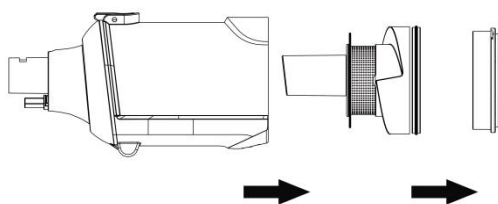
Method 1: Press the dust drop button and empty the dust into a rubbish bin.



Method 2: Press the dust cup release button and take out the dust cup from the main body as the picture below.



Take off the HEPA filter and cyclone cone, empty all the rubbish and clean it. Install them back as the picture below after the parts have air dried.



Attention: Do not use the machine before reinstalling the HEPA filter and cyclone cone or it may damage the unit.

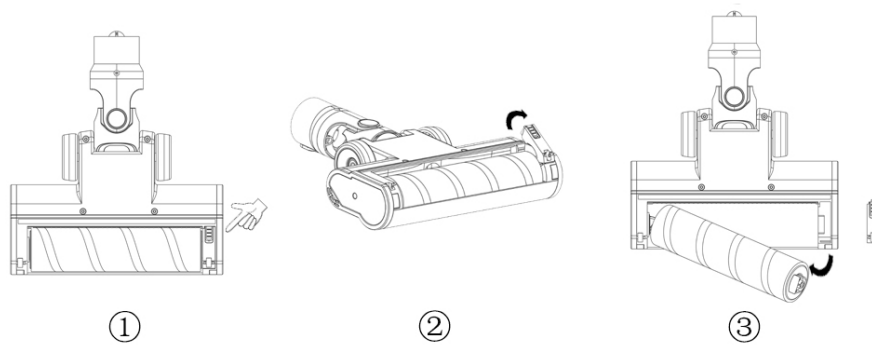
Floor brush cleaning and maintenance

Step 1: Press the roll brush release button.

Step 2: Take the roll brush out.

Step 3: Wash the roll brush and dry it. Fix it back as the pictures below.

Step 4: Reset the roll brush release button to the lock position.



Machine storage

Please put the machine into the storage base when not in use.

Please note

A new unit may become hot with a slight plastic odour after running the motor at high speed for several minutes. This is normal and not a cause for concern.

Specifications

Motor rated voltage and rated power	29.6V 300W
Floor brush rated voltage and rated power	29.6V 15W
Lithium battery	29.6V 2500mAh
Charger input	~100-240V 50/60Hz
Charger output	~35V 0.5A
Charging time	4-5 hours
Noise	≤70dB
Rated Continuous Working Time	15 minutes at high speed 40 minutes at mid speed 80 minutes at low speed
Product size	390x227x108mm (main body)
Product net weight	1.42kg (main body)

Troubleshooting

Problem	Possible causes	Resolutions
Not working	<ul style="list-style-type: none"> No power Brush protected or obstructed 	<ul style="list-style-type: none"> Charging Restart the machine
Weak suction	<ul style="list-style-type: none"> Dust cup is full of rubbish HEPA filter is full of dust Floor brush or electrical tube has been clogged by hair or large pieces of rubbish 	<ul style="list-style-type: none"> Clean the dust cup's rubbish Clean or change the HEPA filter Clean the floor brush or electrical tube's inner rubbish
No LED light is shown when charging	<ul style="list-style-type: none"> Battery pack is not installed in right position The adaptor's connector is not inserted in the charging hole 	<ul style="list-style-type: none"> Install the battery pack in right position Push the adaptor's connector into the charging hole in right position
Not full battery after charging	<ul style="list-style-type: none"> Charging time is not enough Battery is aging 	<ul style="list-style-type: none"> Charge for enough time as instructed Replace battery

Floor brush not working	<ul style="list-style-type: none"> • Large particles or objects vacuumed • Blanket resistant strength is too hard and protected itself. • The brush roll is entangled by hair or wire 	<ul style="list-style-type: none"> • Clean the floor brush and restart the machine • Turn off the machine and take the floor brush a little high of the blankets leave some space between floor brush and blankets and restart the machine • Clean the brush from hair, wire or other things
-------------------------	--	---

In The Box

- Main body
- Electrical tube
- Floor brush
- Adaptor
- Battery pack
- Storage base
- User's manual
- Stretch brush
- Crevice tool

User manual is subject to change without notice. For the latest version of your user manual, please visit <https://www.kogan.com/usermanuals/>