



# USER GUIDE

CREATOR CENTER  
for Creation  
NOTEBOOK

# Contents

<b>About CREATOR CENTER .....</b>	<b>4</b>
<b>CREATOR CENTER Basics .....</b>	<b>5</b>
Main Screen .....	5
Information Bar .....	5
Main Menu .....	6
Sub Menu .....	6
<b>Creative Applications Optimization.....</b>	<b>7</b>
Creator Mode .....	7
How to Enable Creator Mode .....	8
<b>User Scenario .....</b>	<b>9</b>
Selecting User Scenario .....	9
<b>General Settings.....</b>	<b>10</b>
<b>Monitor.....</b>	<b>11</b>
<b>True Color .....</b>	<b>12</b>
True Color Preset Options.....	12
<b>Mystic Light.....</b>	<b>13</b>
Voice Command .....	16
<b>Noise Cancellation.....</b>	<b>21</b>
<b>Duet Display.....</b>	<b>22</b>
Create a New Screen Profile.....	23
Activating Duet Screen Capture .....	23
<b>Gaming Gear .....</b>	<b>24</b>
<b>Product Registration .....</b>	<b>25</b>
<b>Live Update .....</b>	<b>26</b>
<b>System Info .....</b>	<b>27</b>
<b>Microsoft APP .....</b>	<b>28</b>
<b>Battery Master .....</b>	<b>29</b>
Calibrating Battery .....	29
<b>Backup .....</b>	<b>30</b>
<b>Notices .....</b>	<b>31</b>
Copyright.....	31
Revision History.....	31

# About CREATOR CENTER

- Optimize performance for creative applications.
- System performance tuning—you can choose overclock or silent.
- Monitor system information.
- Adjust the best display settings for your eyes.
- Register your MSI products.
- Control LED light effects and synchronize effects to your devices.
- Use utilities to control special features.
- Set the charging method and calibrate the battery.
- Backup system.



## **Important**

*THE SOFTWARE FEATURES IN THIS USER GUIDE VARY BY PRODUCT.*

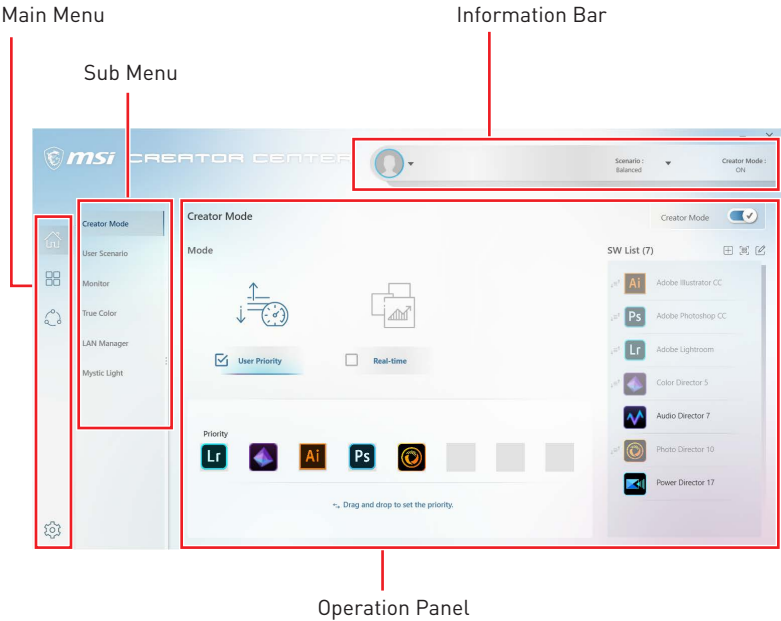
*THE SCREENSHOTS FOR THE UI IN THIS USER GUIDE ARE FOR REFERENCE ONLY AND THE ACTUAL UI DESIGN MAY VARY.*

# CREATOR CENTER Basics

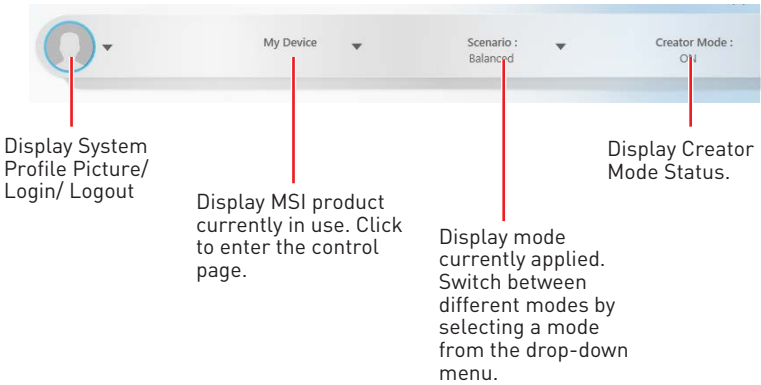
## Main Screen



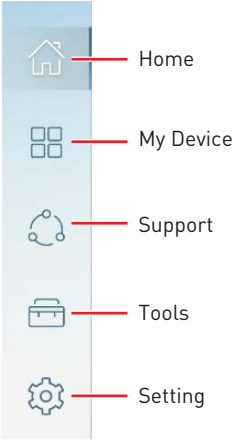
The screenshots for the UI in this user guide are for reference only and the actual UI design may vary.



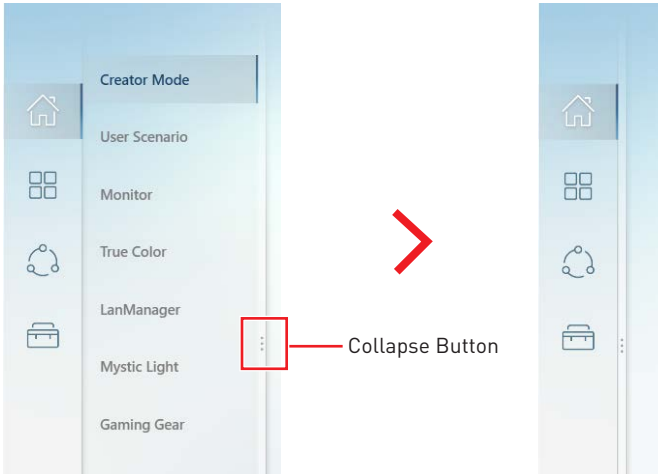
## Information Bar



# Main Menu



# Sub Menu



# Creative Applications Optimization

The Creator Mode feature will optimize the computer system, monitor, cooler and other peripherals to provide the best experience while using creative applications.

## Creator Mode

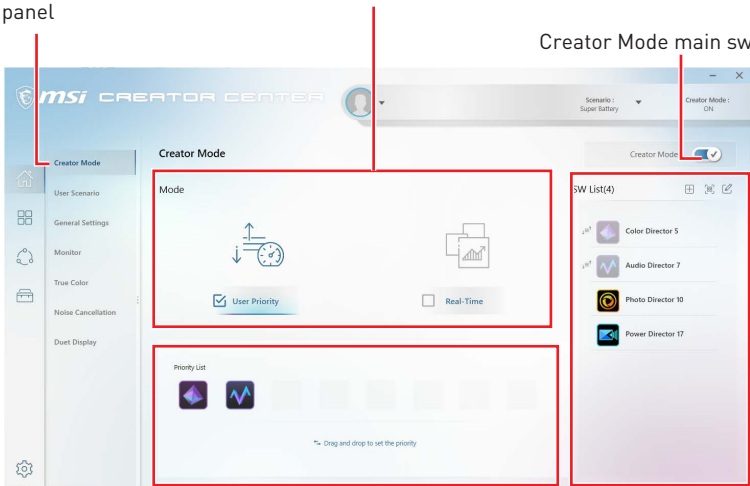
Select **Creator Mode** in the sub menu to enter Creator Mode control panel

Creator Mode selection

User Priority Mode: User-defined software priority

Real-Time Mode: Automatically optimize software performance.

Creator Mode main switch



You can drag and drop to set the priority

List software that supported by creator mode



Edit the software list

Refresh the software list

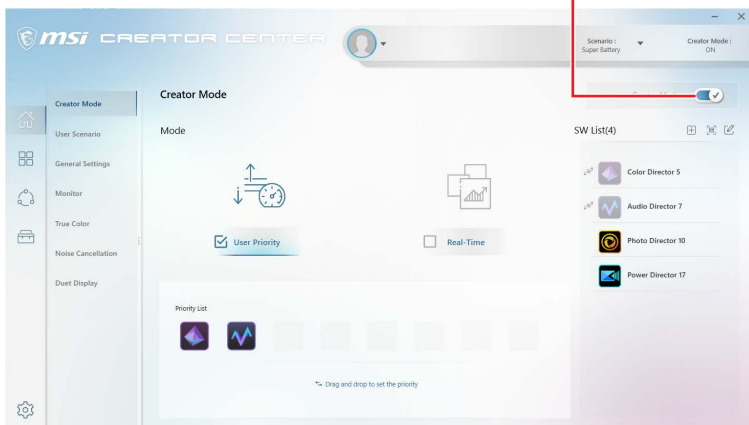
Add software to the software list

## How to Enable Creator Mode

You can enable the Creator Mode for Processor Affinity, System Performance and Application Priority while using creative applications.

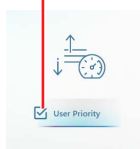
1. Go to Home > Creator Mode, and turn on Creator Mode main switch.

Turn on Creator Mode main switch



2. Select User Priority Mode or Real-Time Mode.

Check the box



or

Check the box



3. Run the application.



**Important**

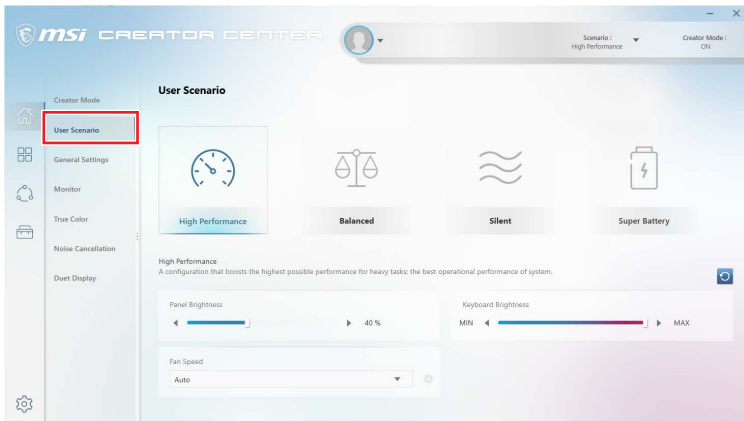
*In order to apply the settings, the creator mode must be enabled before running the software.*

# User Scenario

## Selecting User Scenario

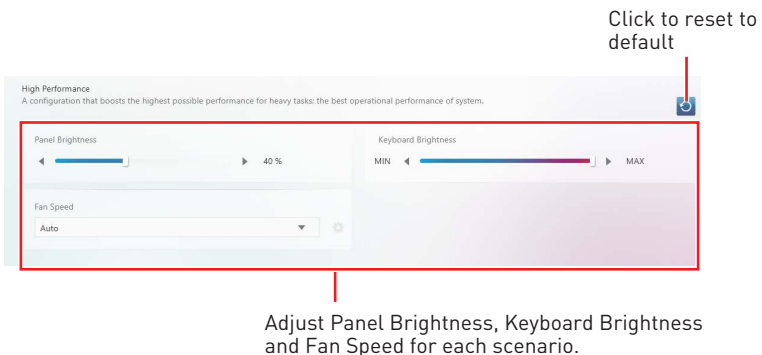
The CREATOR CENTER has default scenarios and customized preset options.

1. Go to Home > User Scenario.



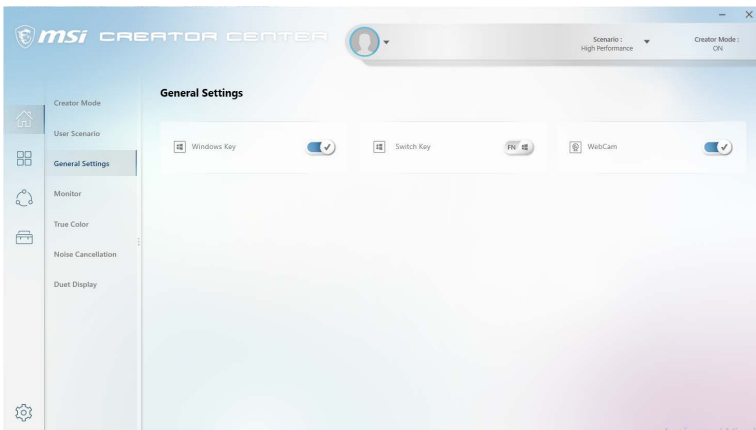
2. Select one of the options.

- **Extreme Performance** – A configuration that boosts the highest possible performance.
- **Balanced** - MSI recommended settings for average users.
- **Silent** - A configuration that allows system to run smoothly with minimum loading.
- **Super Battery** - A power-saving mode that lowers the power consumption for basic needs.



# General Settings

You can enable/disable some general settings in this panel.



## Important

*The features in the General Settings vary by product.*

**Windows Key** - Click to enable or disable the Windows key on the keyboard.

**Switch Key** - Click to switch the Windows key and the Fn key on the keyboard.

**WebCam** - Click to enable or disable the webcam.

**Display OverDrive** - Only available on certain displays. Once enabled, the response time of the will be overclocked.

**USB Lighting** - Control the USB port lighting mode.

**GPU Switch** - Click to switch the MSHybrid Graphics Mode and the Discrete Graphics Mode.

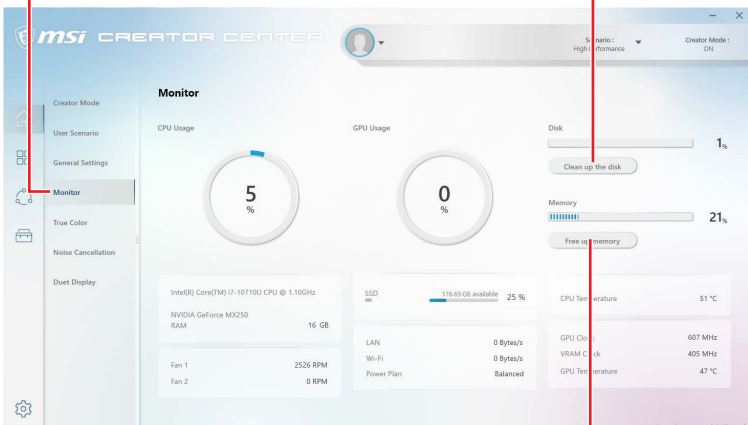
**Crosshair Display** - Click to enable or disable the Crosshair Display. Click the gear icon to open the True Color control and choose the type of crosshair and its color.

# Monitor

Monitor feature provides a custom hardware monitor gadget to display the system status.

Select **Monitor** in the sub menu to enter Monitor page

Click to clean up the disk



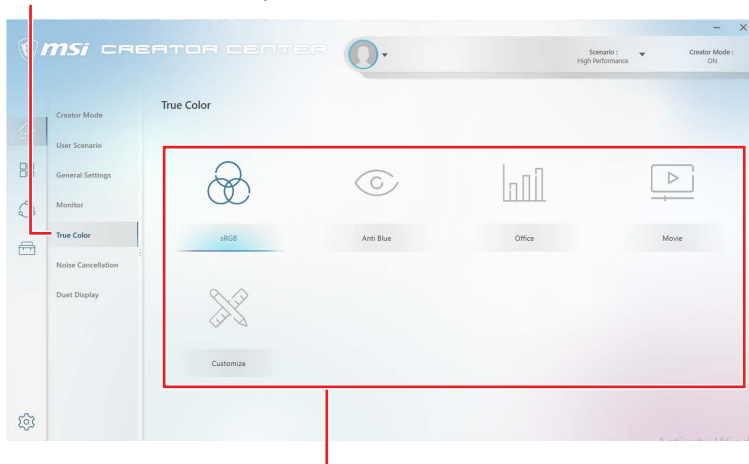
Click to free up memory

# True Color

With True Color function, you can adjust the best screen gamma, saturation, brightness and contrast settings for your eyes.

The True Color feature supports games in windowed mode.

Select **True Color** in the sub menu to enter True Color control panel



Select the quick screen color option

## True Color Preset Options

When you click the preset option, the screen settings will be immediately applied to your computer. The detailed options are as follows:



### Important

*The features in the True Color vary by product.*

- **Gamer** - For playing games.
- **Anti-Blue** - For reducing the amount of blue light that is emitted from the display to reduce eye fatigue.
- **sRGB** - For accurate color when viewing images on websites.
- **Designer** - For design applications.
- **Office** - For office and productivity applications.
- **Movie** - For watching movies.
- **AdobeRGB** - For accurate color when viewing images and other media created in the Adobe RGB color space.
- **Display P3** - For accurate color in wide-gamut cinema mode.
- **Customize** - For the True Color 3 application setting.

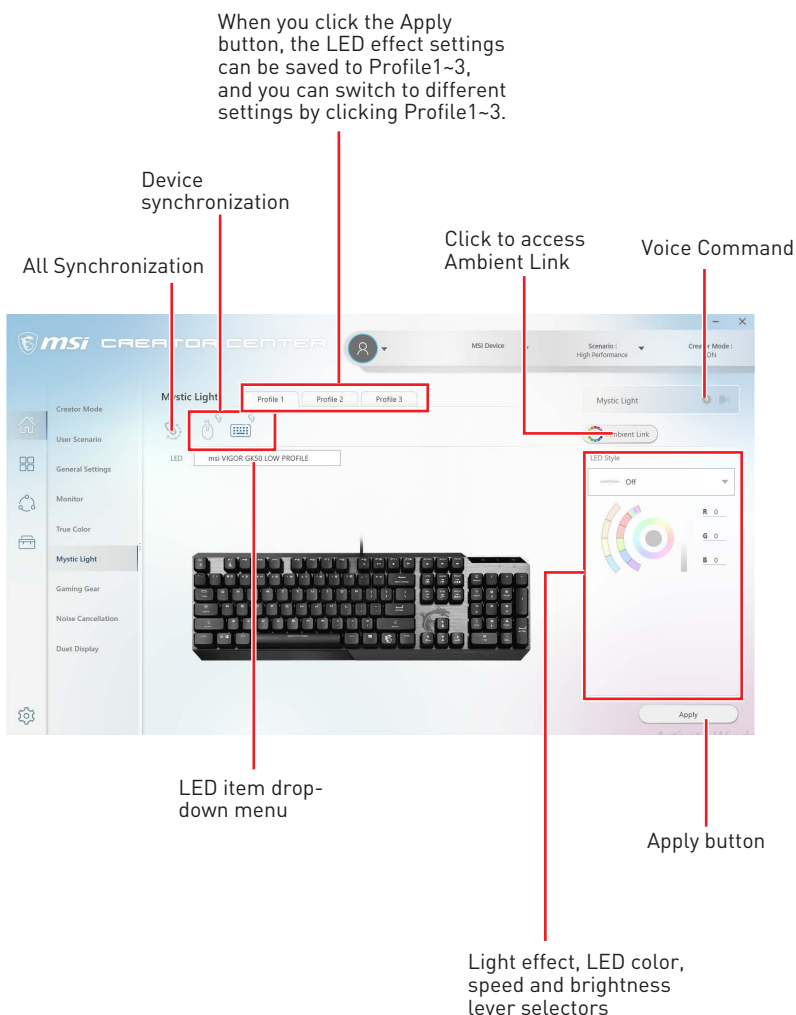
# Mystic Light

Mystic Light feature allows you to control LED light effects of MSI & partner products. For some earlier products, you can go to product download page to download the applicable LED control software.



## Important

The Mystic Light feature is only available when MSI Gear devices are connected.



- **Device synchronization** - In this section, you may synchronize LED light effect to your devices.



- **All synchronization** - Click the big chain icon on the left side of all the devices.



Click the big chain icon

- **To synchronize devices** - Click the chain icon above device icon. When the chain icon turns blue, it indicates that the device has synchronized LED effect settings with other devices.

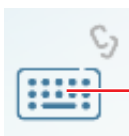


**Chain icon** - indicates the device has been synchronized.



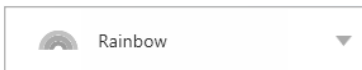
**Broken-chain icon** - indicates the device is not synchronized.

- **Individual** - You can also change settings for one single device. To do that, click the chain icon and the color will turn gray as below.

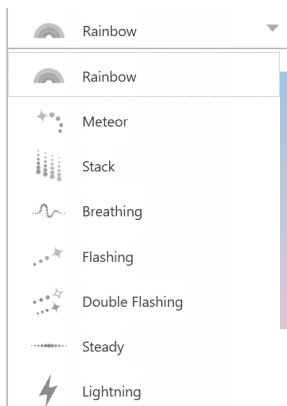


**Device icon** - click it to change LED effect setting for this device. When the device icon turns blue, it indicates the device you're currently setting.

- **LED item drop-down menu** - Click it to select the LED item on the device. The LED effects vary depending on your LED item selection.



## • Light effect drop-down menu



Click it to select LED light effects. Please note that the options about light effects would be more or less depending on the devices you have. It will only list the light effects which are available for all applicable devices.

## • LED Color selector - In this section, you may select the color for one single light effect (Stack, Breathing, Flashing etc.).

The outer arc is a custom color picker and the inner arc is the default color picker that cannot be changed. You can simply change the LED color by clicking on the color on the outer or inner arc. To store a custom color, click one of the color slots on the outer arc to store the color of your choice.

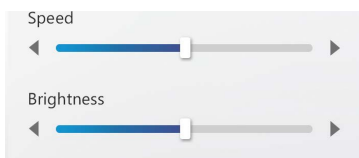


You can specify a color by editing an RGB (red, green, blue) color value between 0 and 255.

Drag the brightness slider up to increase brightness or drag down to decrease brightness.

Use the Hue Circle to choose the color you want. The color you choose will be displayed on the center circle.

## • Effect speed and brightness level



Drag the sliders to adjust the LED light effect for switching speed and light brightness.

*Please note that these function will only be available if your device supports it.*

## Voice Command

Mystic Light allows you to use your voice to change LED effects.

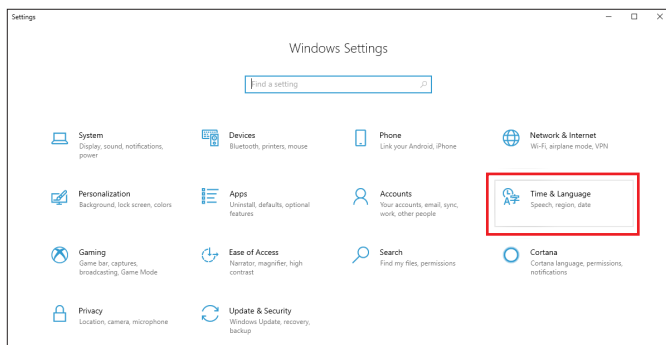


### Important

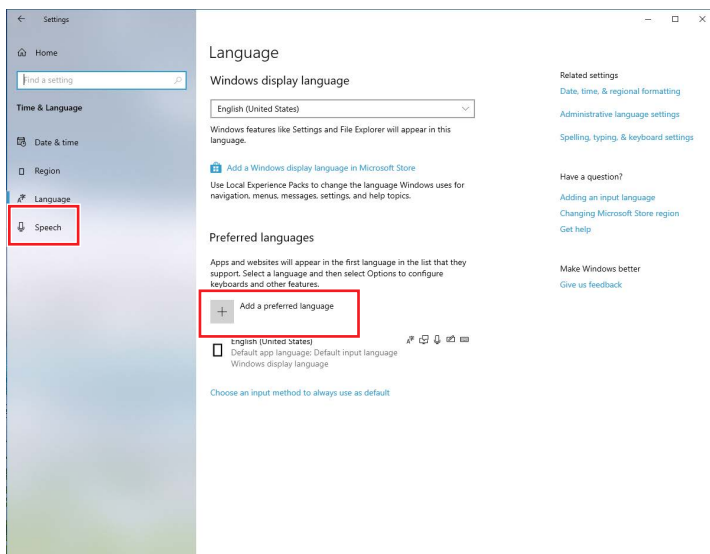
The Voice Command feature is only available for the Notebook with the Per Key RGB keyboard or connected to MSI Gear devices.

To start Voice Command, you need to install Windows 10 Speech Voices.

1. Go to Windows Settings, and select **Time & Language**.



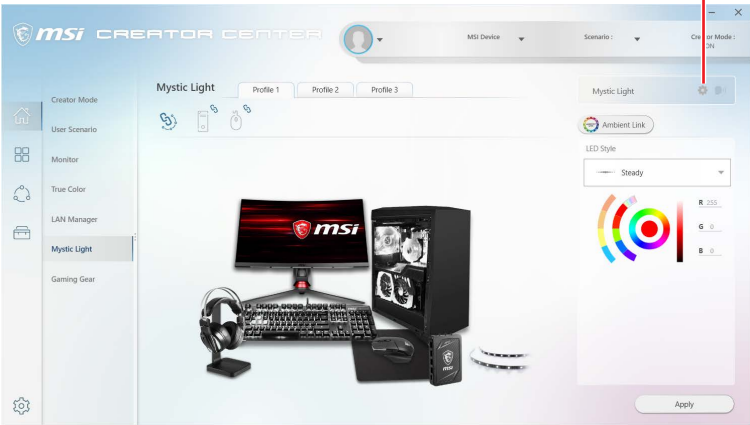
2. Select **Add a preferred language**, then add **English** and the voice packages.
3. Change your default speech options to **English** by selecting **Speech**.



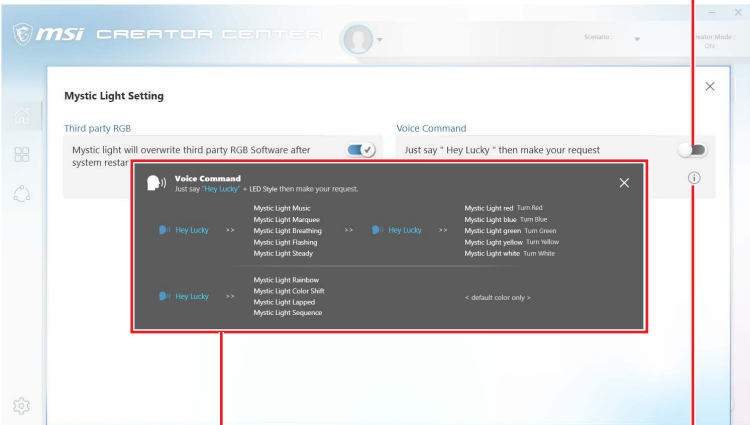
# How to Control Mystic Light via Voice Command

Go to Home > Mystic Light, and click **setting** in the upper right corner. Enable Voice Command and then you can change the LED style by saying **Hey Lucky**.

Click here



Enable Voice Command



A list of Hey Lucky commands

Click to open the list of Hey Lucky commands

## Ambient Link

With the Ambient Link feature, it will provide visual color feedback on Philips Hue and Nanoleaf depending on what is happening in games. To use Ambient Link, you need to follow the instructions below to complete the link setup.



### Important

The Ambient Link feature is only available for the Notebook with the Per Key RGB keyboard or connected to MSI Gear devices.

## Network Requirements

- The router is broadcasting a 2.4GHz network.
- The Wi-Fi network is using WPA/WPA2 security.
- The router is configured for any of the Wi-Fi modes a/b/g/n.

## Philips Hue Setup (optional)

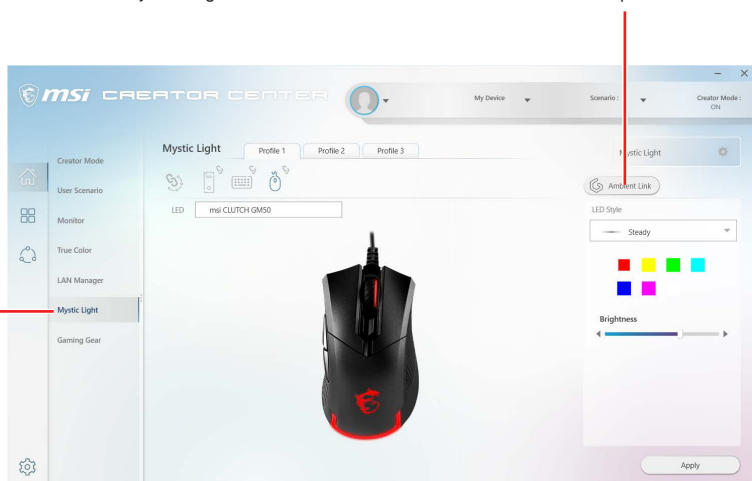
1. Plug in your Hue bridge and it will automatically power up.
2. Connect it to the router LAN port.
3. Wait for the two lights to come on and you are good to go. (Left is power light and center is local network)

## Nanoleaf Setup (optional)

- The router is compatible with Bonjour (mDNS).

Select **Mystic Light** in the sub menu to enter Mystic Light menu

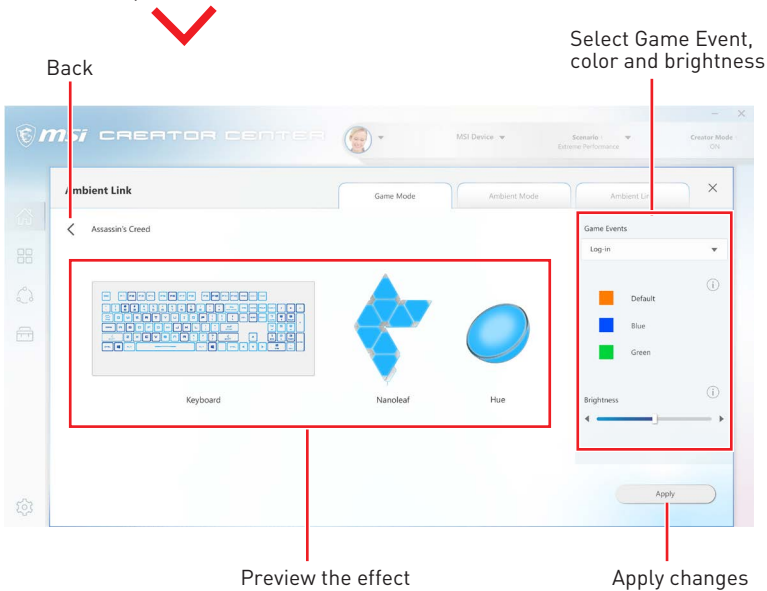
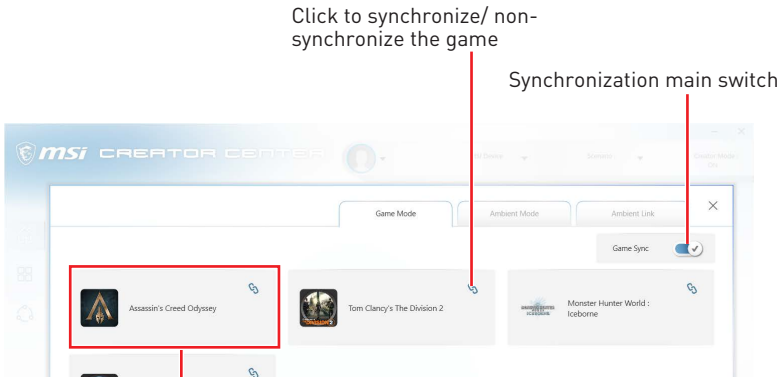
Click to enter the Ambient Link control panel



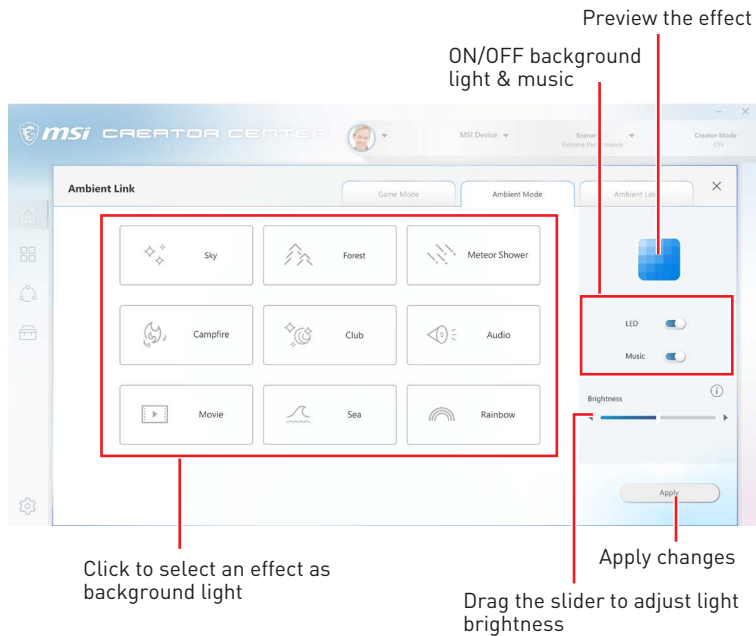
Ambient Link Control Panel

Game Mode and Ambient Mode can only be activated one at a time on the Ambient Link control panel.

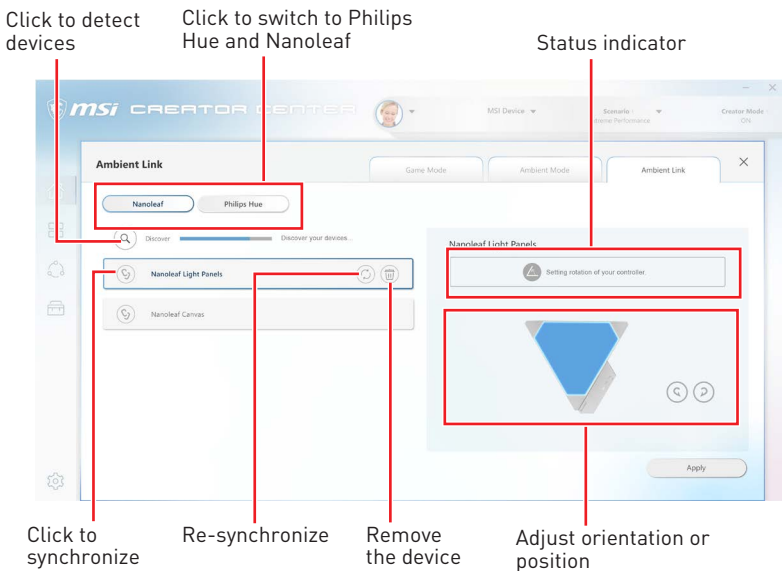
- Game Mode tab



• **Ambient Mode tab**



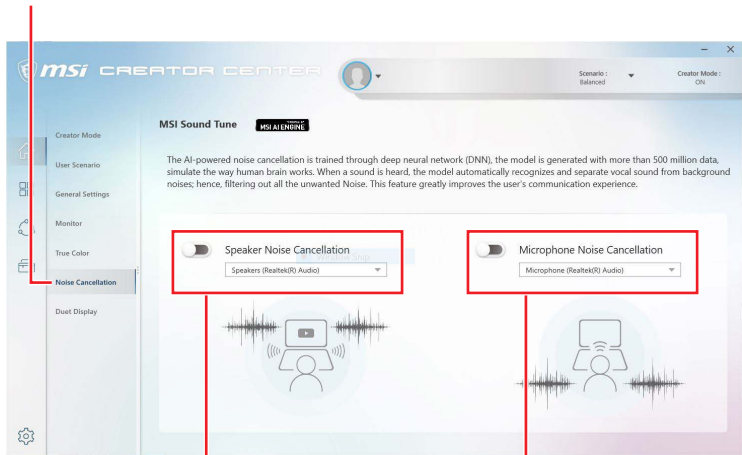
• **Ambient Link tab**



# Noise Cancellation

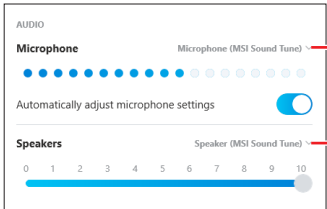
The AI-powered noise cancellation is trained through a deep neural network (DNN), the model is generated with more than 500 million data, simulates the way the human brain works. When a sound is heard, the model automatically recognizes and separates the vocal sound from background noises. Hence, filtering out all the unwanted noise. This feature greatly improves the users' communication experience.

Select **Noise Cancellation** in the sub menu to enter MSI Sound Tune panel



Enable/ Disable Speaker Noise Cancellation.

Enable/ Disable Microphone Noise Cancellation.

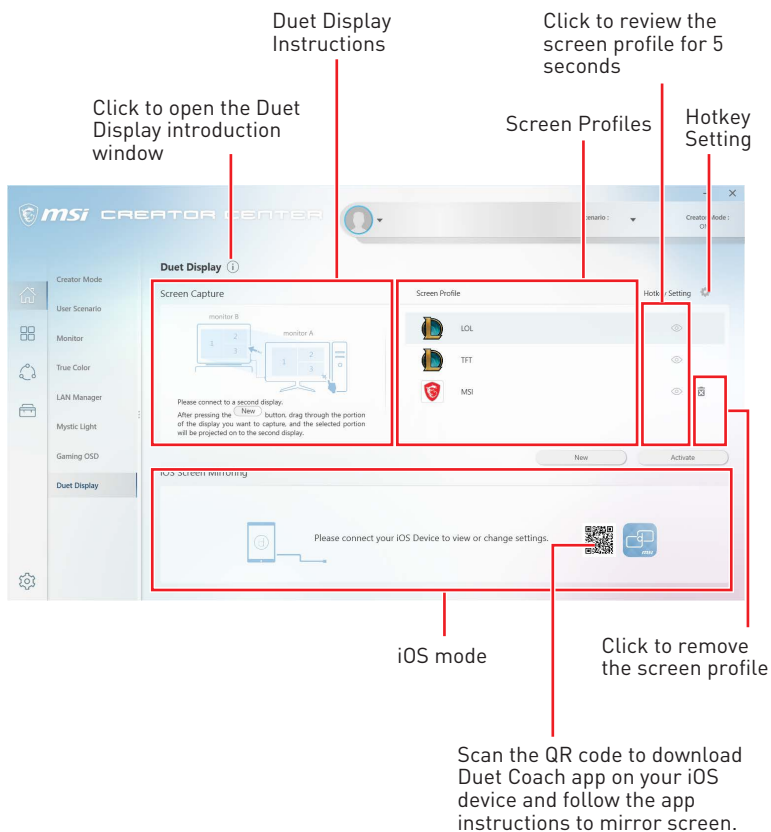


Select **Microphone (MSI Sound Tune)** in the communication software.

Select **Speaker (MSI Sound Tune)** in the communication software.

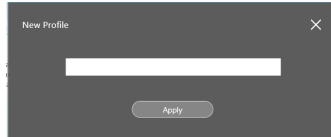
# Duet Display

Duet turns your iOS device & Android phone, tablet, or Chromebook into the most advanced extra display, and offers unparalleled performance and display quality.

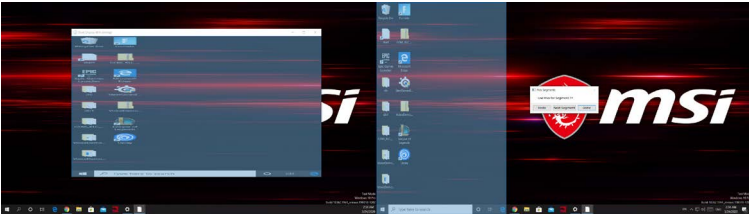


## Create a New Screen Profile

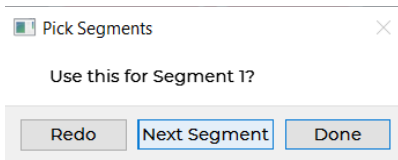
1. Connect to a second display.
2. Click the **New** button.
3. Enter the name of this new profile and click the **Apply** button.



4. Drag through the portion of the display you want to capture.

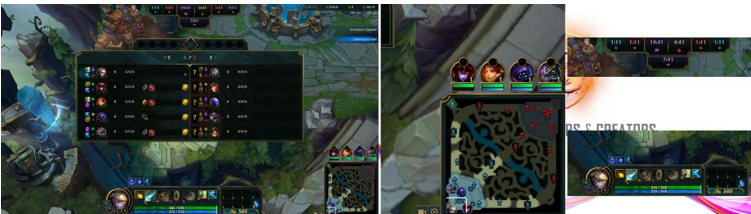


5. Click the **Next Segment** button to set maximum 3 segments.
6. Click the **Done** button.



## Activating Duet Screen Capture

1. Connect to a second display.
2. Check the hotkey setting of the screen profile and remember it.
3. Run the application.
4. Press the hotkey and the selected portion will be projected on to the second display.



# Gaming Gear

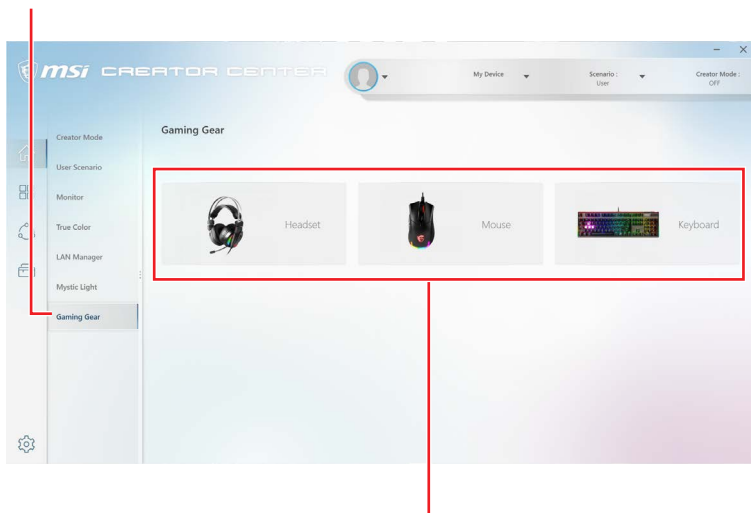
This panel allows you to control MSI's gaming gear and supported third-party devices.



**Important**

*The Gaming Gear feature is only available when MSI Gear devices are connected.*

Select **Gaming Gear** in the sub menu to enter Gaming Gear menu

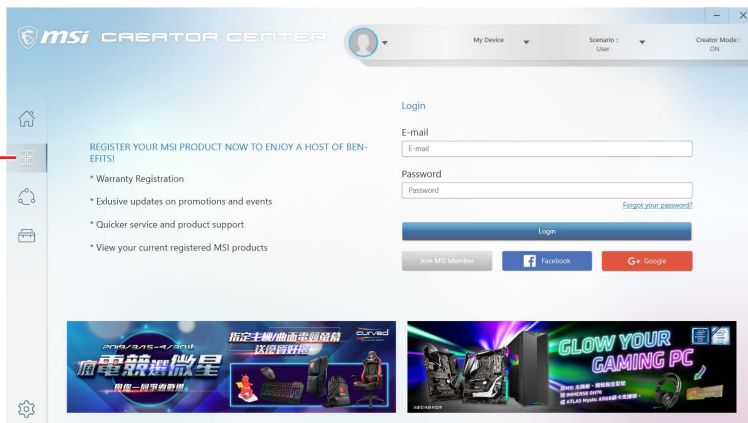


Supported devices will be displayed here. Click the device to enter the control panel of the device.

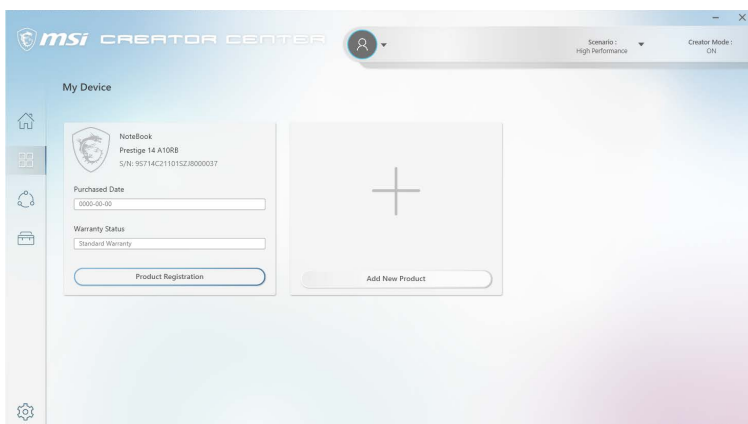
# Product Registration

Register your MSI product to get exclusive updates, quicker service and product support.

Select **My Device** in the sub menu to register your product



Login to your MSI account on this My Devices tab. If you don't have an MSI account, please click the **Join MSI Member** button or use Facebook/ Google Plus to login.



Click the **Product Register** button and fill in the product registration form.

# Live Update

Live Update feature allows you to scan system and download the latest drivers and utilities. With Live Update, you don't need to search the drivers on websites. Live Update will download the appropriate drivers automatically. Some software/ drivers will be installed automatically after downloading, please follow the instructions of the installer.

## To use Live Update:

1. Connect your computer to the internet.
2. Go to Support > Live Update.

Click to scan the system

Select which item you want to update

Utility and driver list

Click to install

Item	Current Ver.	Online Ver.	Size
<b>MSI Utility</b>			
<input checked="" type="checkbox"/> Gaming Hotkey	Not installed	10.1.1.16	2.7 MB
<input type="checkbox"/> Intel Management Engine Driver	Not installed	11.0.0.7	62.97 MB
<b>Driver</b>			
<input type="checkbox"/> Killer Network Universal Drivers	Not installed	1.7.1090	57.9 MB
<input type="checkbox"/> Intel ME Drivers	1816.12.0.1130	1831.12.0.1156	68.3 MB
<input type="checkbox"/> Realtek HD Universal Drivers	Not installed	6.0.1.8531	21.3 MB
<input type="checkbox"/> Intel Chipset Drivers	10.1.17695.8086	10.1.17711.8088	6.52 MB

date recent checked: 2019/2/25

# System Info

The System Info provides information about OS, Product Name, Serial Number and Software information.

## To open System Info:

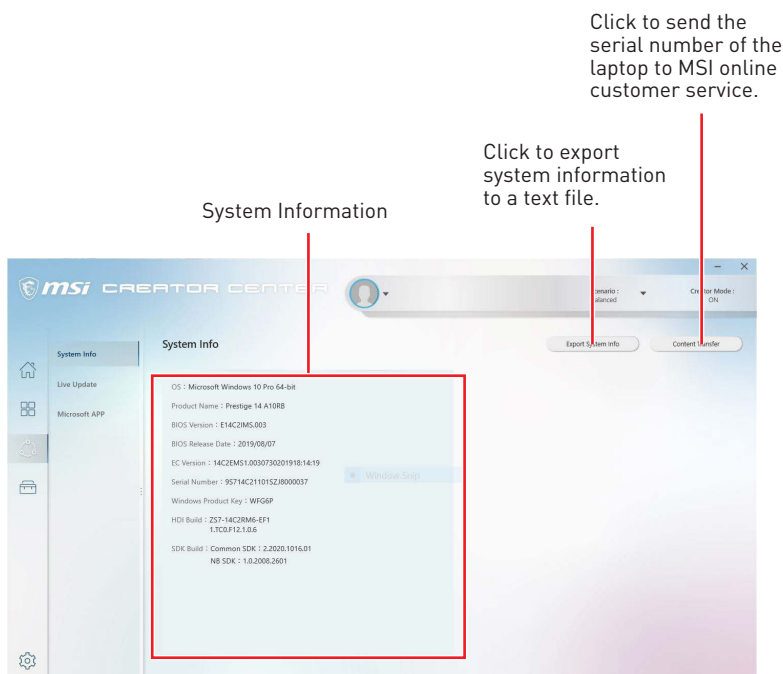
1. Go to Support > System Info.

## To export system information:

1. Go to Support > System Info.
2. Click **Export System Info** button in the upper right corner.
3. Browse to the location where you want to save the new text file, and then click Save.

## To send the serial number to MSI online customer service:

1. Go to Support > System Info.
2. Click **Content Transfer** button in the upper right corner.
3. Follow customer service's instructions, and enter 5-digit encryption code.

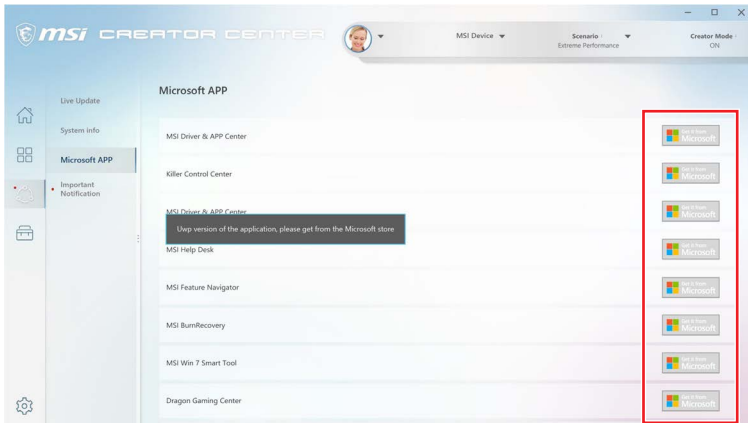


# Microsoft APP

The Microsoft App feature detects installed drivers and displays a relative Microsoft application download links.

## To install Microsoft App:

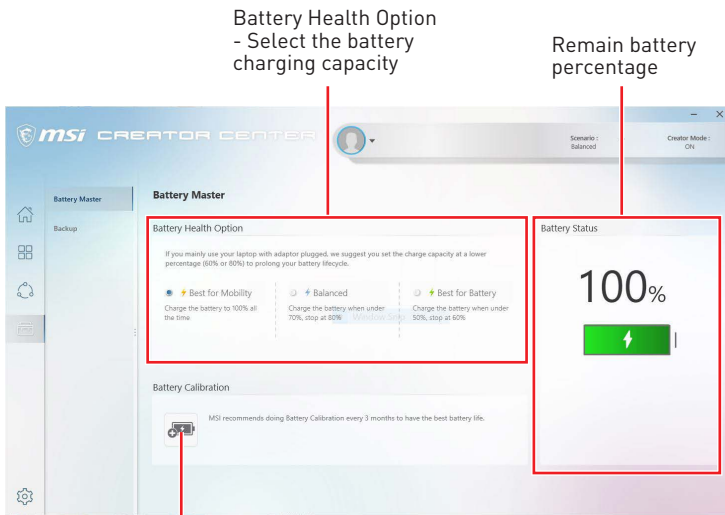
1. Go to Support > Microsoft App.
2. Click the Get it from Microsoft icon  on the right side of the item.
3. Download and install the application from Microsoft Store.



Click to install

# Battery Master

Battery Master is a function tab related to battery maintenance such as Remain Battery Percentage, Battery Health Option, and Battery Calibration.



Click to calibrate the battery

## Calibrating Battery

We recommends doing Battery Calibration every 3 months to have the best battery life.

1. Go to Tools > Battery Master.
2. Click the **Battery Calibration** icon.
3. Follow the instructions on the Battery Calibration screen to connect to the power adapter, install the battery and close the other windows.
4. Click **Start**.



# Backup

Backup utility designed to backup the recovery image to a USB flash disk or ISO files. They can be used to recover the system to manufacturer's default settings when it is needed.

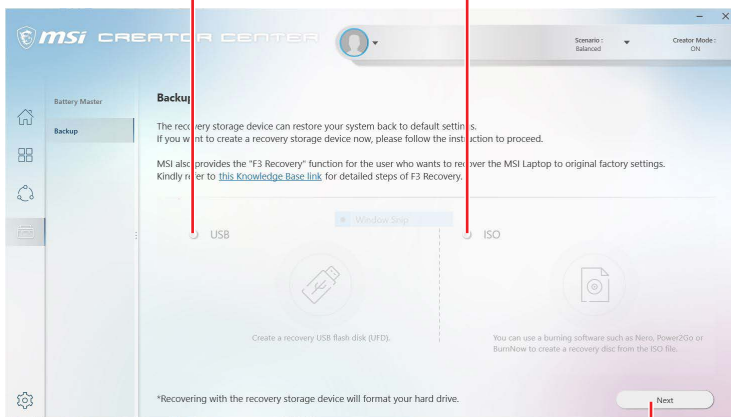


## Important

Usage of this application on any product with no authorization may be prohibited.

Select to create a  
recovery USB flash  
disk

Select to create an  
ISO image file



After choosing the type of  
backup, click **Next** to start the  
backup process.

# Notices

The MSI logo used is a registered trademark of Micro-Star Int'l Co., Ltd. All other marks and names mentioned may be trademarks of their respective owners. No warranty as to accuracy or completeness is expressed or implied. MSI reserves the right to make changes to this document without prior notice.

## Copyright

© Micro-Star Int'l Co.,Ltd. 2020 All rights reserved.

## Revision History

Version 1.0, 2020/11, First release