



COLTLITE CL

HIGH PERFORMANCE NATURAL LOUVRED VENTILATOR

THE NEW GENERATION VENTILATOR THE FUTURE IN NATURAL VENTILATION

Shipton House, Hackney, London.

Architect: Ingleton Wood

Colt supplied 39 Coltlite CLS units of varying sizes in clear, blue, red, green, tangerine and yellow colour interlayer coloured glass, with both manual and electric controls.

COLT

Image:
AOV's on a project in London

Type:
CLT glazed



COLTLITE:

NATURAL VENTILATION AT ITS BEST AND IT'S GETTING EVEN BETTER!

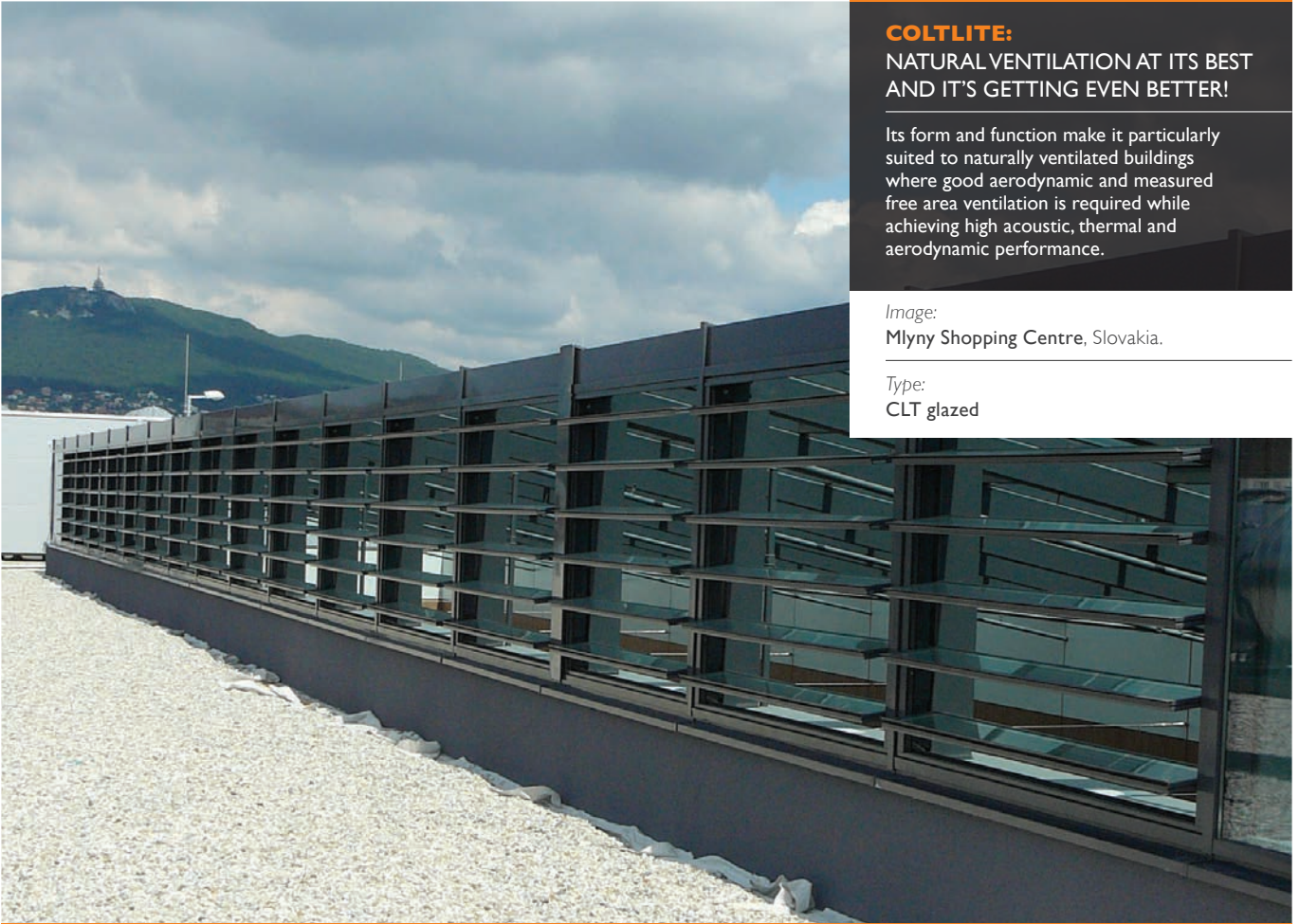
Its form and function make it particularly suited to naturally ventilated buildings where good aerodynamic and measured free area ventilation is required while achieving high acoustic, thermal and aerodynamic performance.

Image:

Mlyny Shopping Centre, Slovakia.

Type:

CLT glazed



ARCHITECTS LOVE IT FOR ITS LOOKS AND PERFORMANCE:

They can use the Coltlite ventilator to great effect in designing stunning looking buildings with the knowledge that it will perform exceptionally well as a natural ventilator. It is also highly adaptable: they can have the ventilator configured to an exact millimeter width or height.

CONSULTANTS LOVE IT FOR ITS VERSATILITY:

Besides using it as a façade element, they can use it as a smoke/air damper within a shaft system.

Coltlite is well suited to being both a smoke ventilator and a natural / day-to-day ventilator.

BUILDING MANAGERS LOVE IT FOR ITS FRUGALITY:

Easy to maintain, Coltlite delivers an exceptional thermal and acoustic performance. Low operating costs plus high energy efficiency – what more could they ask for?

Image:

Bilston Leisure Centre, Wolverhampton.

Type:

CLT glazed

And now, with the new and improved Coltlite CLT, CLN and CLS, natural ventilation has got even better!

Glass facades with Colt's new Coltlite will look even better; with bigger glazed surfaces now that it can be wider, accommodate heavier louvres, and now that frame face widths (at 40mm) are narrower than before.

The improvements aren't limited to its good looks – its aerodynamic and acoustic performance is better than ever, and it gets top marks in air permeability and resistance to rain.

Its reliability has been proven: all types of Coltlite have been exhaustively tested and certified to EN 12101-2:2003 as dual purpose ventilators in accredited third party test laboratories and are CE marked. The ventilator is CE marked according to EN 14351-1 and has been externally tested, which guarantees its performance as a façade element.

And there is more! Maintenance has never been so simple, now that the Coltlite comes with removable covers that provide easy access to the mechanisms.

As if that isn't enough, Coltlite can be installed with a drive motor operated directly with a 0-10 volt control signal – there's no need for additional components.

Good looks, performance, economy: you couldn't ask for more from a natural ventilator!

HIGH PERFORMANCE

Coltlite has high aerodynamic, acoustic and thermal performance, and has a high resistance to the effects of fire. Full performance data is given later on in this leaflet.

TESTED AND CERTIFIED PERFORMANCE

Coltlite has been exhaustively tested and certified to EN 12101-2:2003 as a dual purpose ventilator in accredited third party test laboratories and is CE marked. The ventilator is CE marked according to EN 14351-1 which guarantees its performance as a façade element.

HIGH PERFORMANCE IN FIRE

One of the architect's main design considerations is to make sure that any smoke emitted by a fire is evacuated from the building in a controlled fashion. Special arrangements need to be considered, in particular for escape routes such as in stairwells. Coltlite is very suitable for protecting escape routes since it has a high aerodynamic efficiency, opens quickly, has large openings and does not get in the way of people trying to leave the building.

EASY TO INSTALL AND MAINTAIN

Coltlite is delivered fully assembled to site into a structural opening or curtain walling. It must be installed in the vertical. It has a wide range of base profiles to suit most sheeting or glazing applications.

Easy maintenance afforded by allowing access to mechanisms via removable panels.

FEATURES AND BENEFITS A WIDE RANGE OF APPLICATIONS

Coltlite is classed as a dual purpose ventilator, providing both day to day and smoke control ventilation.

It can also be installed either for low level air inlet or for high level extract. Coltlite is also often used as a termination piece for large ducted or air handling systems. Glass versions allow the entry of natural daylight, and a wide range of infill panels are available.

Options include pneumatic, electronic or manual controls and a wide range of louvre types, accessories and finishes.

Coltlite's versatility allows it to be installed either as a primary or secondary façade element, such as in a winter garden. It is available either single, double or triple breasted.

Image:
Common Ground, Sydney.

Type:
CLS glazed



DURABLE

The frame is manufactured from tough, corrosion resistant aluminium alloy, with stainless steel fixings.

SAFE IN OPERATION

Coltlite has an optional anti-finger trapping control system.

OWN MANUFACTURE

Coltlite CL is manufactured under strict quality control by Colt. Coltlite is manufactured under the ISO 9000 quality standard. Each unit is given a functional test before despatch.

Image:
Louisiana Avenue, USA.

Type:
CLT

AESTHETIC DESIGN

Coltlite uses narrow framework and projects only a small distance into the surrounding space. Narrower face frames also increase the geometrical area for the same size of opening and therefore the aerodynamic efficiency.

Motors can be hidden within the frame or are small in size. Our new Coltlite has a bigger ratio of glazed surface to profiles as it has smaller frame face widths.

DESIGN SERVICE

Colt provides a pre-order design service. Please contact Colt for more information relating to the application, specification, installation or servicing of Coltlite.

Image:
St. Matthew's Academy, London

Type:
CLT glazed

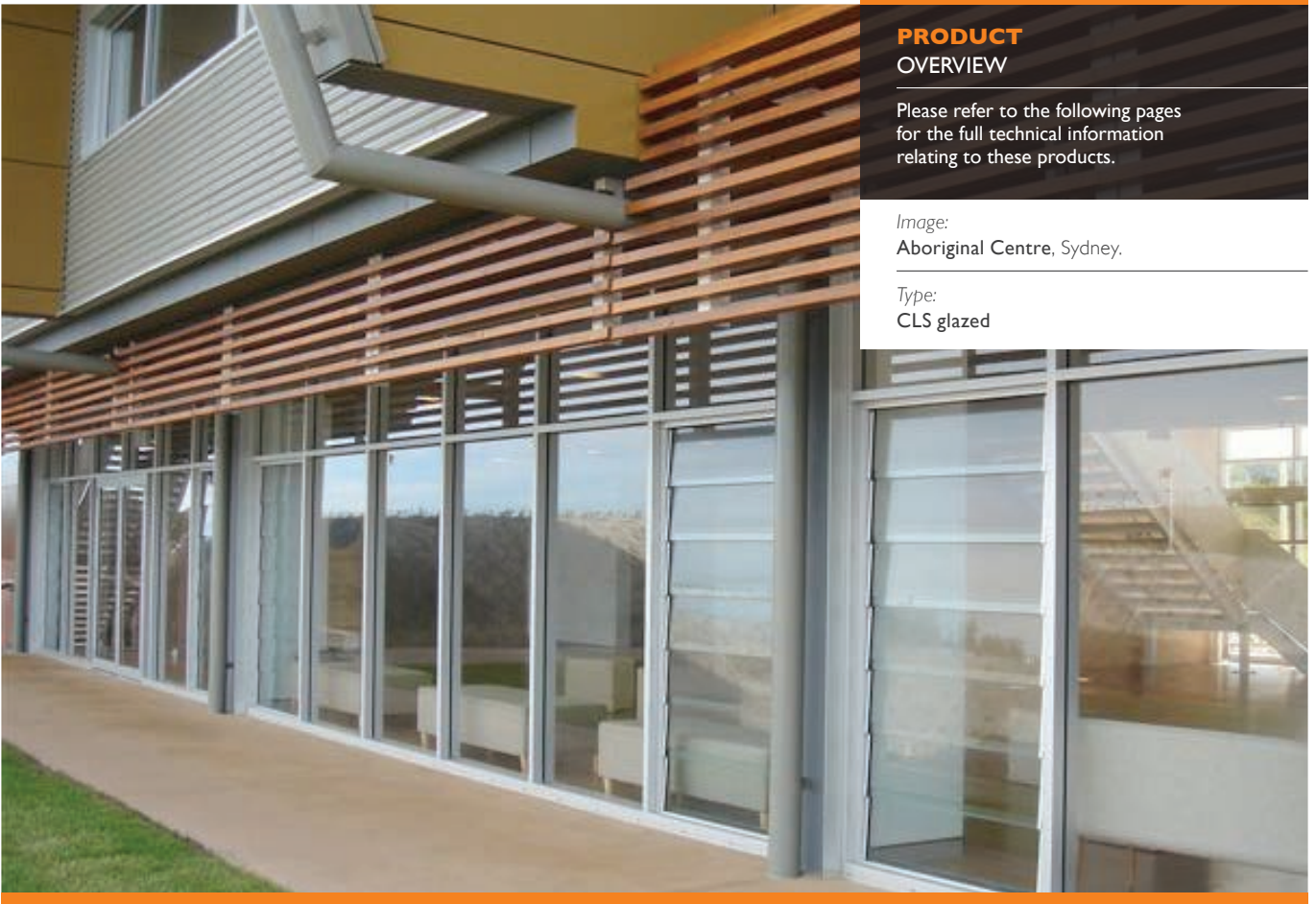


PRODUCT OVERVIEW

Please refer to the following pages for the full technical information relating to these products.

Image:
Aboriginal Centre, Sydney.

Type:
CLS glazed



COLTLITE GLASS LOUVRED VENTILATOR TYPE CLN

Non-thermally broken extruded aluminium outer frames, non-thermally broken louvre frames. Double glazed louvres with 28mm thick clear float glass. Overall frame depth 47mm, frame face width 40mm.

For high acoustic and thermal performance.



COLTLITE GLASS LOUVRED VENTILATOR TYPE CLS

Non-thermally broken extruded aluminium outer frames. Frameless single glazed overlapping louvres with either 8mm, 10 mm or 12 mm thick float, toughened or laminated glass. Overall frame depth 47mm, frame face width 40mm.

For the highest aerodynamic performance where thermal insulation is not a key requirement. with stainless steel fixings.



COLTLITE GLASS LOUVRED VENTILATOR TYPE CLT

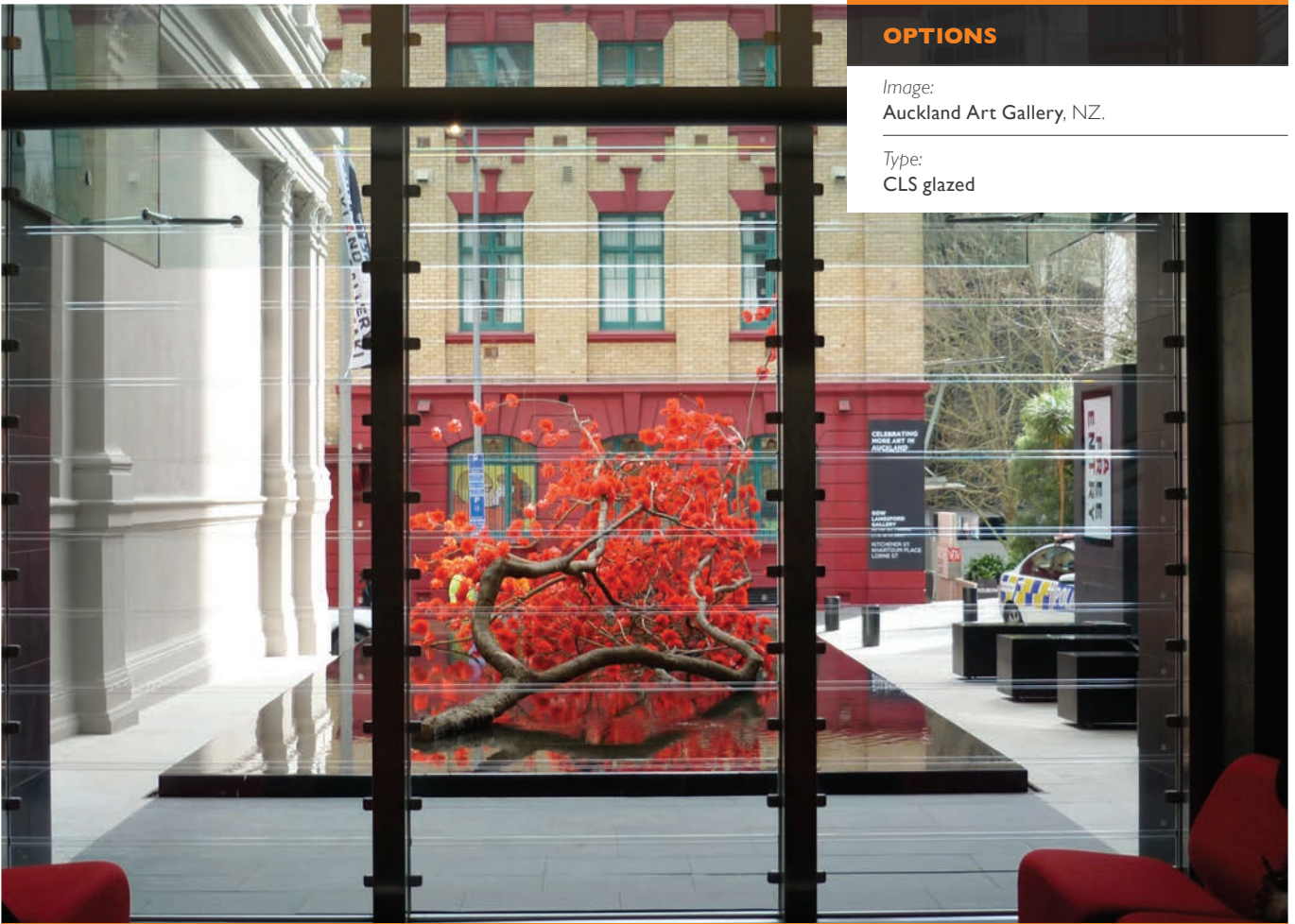
Thermally broken extruded aluminium outer frames and louvre frames. Double glazed louvres with 28mm thick clear toughened glass. Overall frame depth 47mm, frame face width 40mm.

For the highest acoustic and thermal performance.

OPTIONS

Image:
Auckland Art Gallery, NZ.

Type:
CLS glazed



LOUVRES

Glass louvres are manufactured as standard in single and double glazed options. There is the choice of glass with a thickness of between 4 - 8 mm for the double glazed systems, with an overall glass thickness of 28mm, and glass with a thickness of between 8, 10 and 12 mm for the CLS single glazed version.

Louvres can also be provided with insulated aluminium sections. For all versions except CLS, glazing seals comprise double weather strips with a nylon lip between, and the horizontal glass edges of the louvres are enclosed with aluminium sections which have two overlapping weather seals for excellent air tightness.

FRAMES

CLN has non-thermally broken outer and louvre frames. CLS has non-thermally broken outer frames and frameless glass louvres.

Both the outer and louvre frames of the CLT are thermally broken.

CONTROLS

Coltlite is available with pneumatic, manual, 230v ac or 24v dc electric controls for the potential to be connected to a building management system.

With the electric version, Coltlite moves noiselessly to any position, automatically stopping at the fully open and fully closed positions. Alternatively, blades can be stopped in any intermediate position throughout the duration of the open/close cycle. Coltlite has an optional anti-finger trapping facility.

MANUAL CONTROLS OPTION

Hand controls consist of a lever handle.

PAINT FINISHES

Coltlite is available anodized or polyester powder coated to a RAL colour. Thermally broken frames can be coated to different colours inside and out.

Special colours are also available on request.



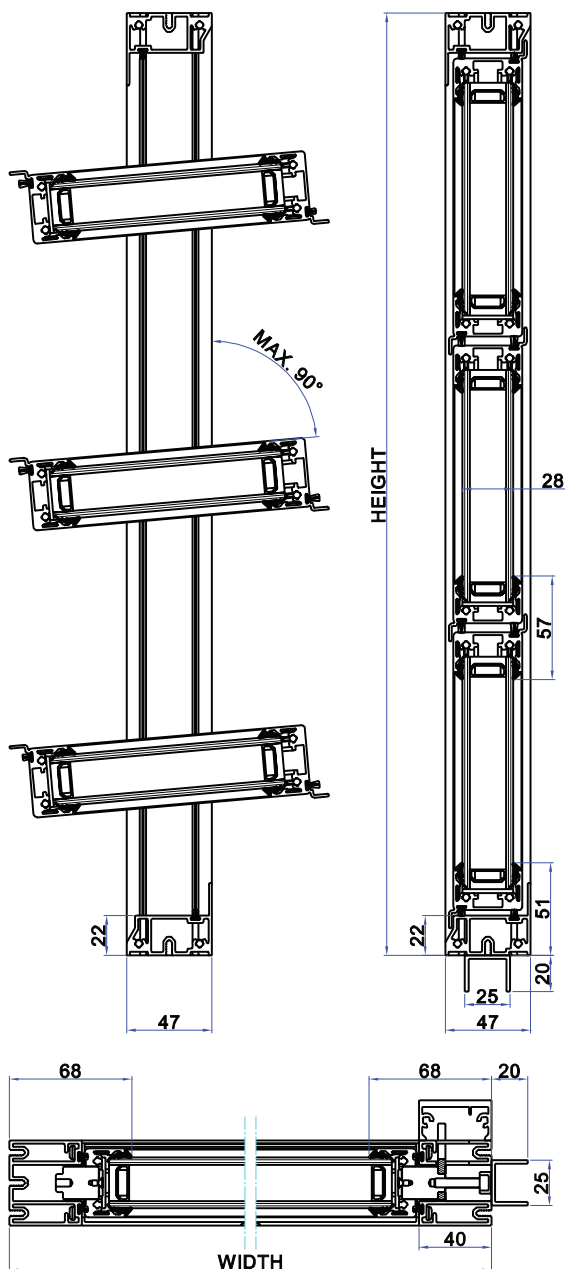
Image:
The University of Otago, Dunedin.

Type:
CLT glazed



SUMMARY TECHNICAL INFORMATION

COLTLITE CLN



NOTES

*(1) Outer frame dimensions. For throat dimensions subtract 80mm.

*(2) Ventilators over a certain width and height are separated for ease of transportation and handling.

*(3) Maximum louvre weight 20 kg. Aspect ratio of louvre height to louvre length must be less than 1:10.

These data are indicative only.

The ventilator should be designed to resist the design wind loads. Colt can guarantee the structural stability for a bank of ventilators with an area up to 6m² assuming a design wind load of 1500 Pa. Above this, a structural engineering calculation will be required.

Units up to 15m high may be supplied to a special order subject to technical approval by Colt.

DESCRIPTION

VENT OVERALL WIDTH

*Note (1)

VENT OVERALL HEIGHT

*Note (2)

BLADE PITCH (OR LOUVRE HEIGHT)

*Note (3)

LOUVRE PIVOTS

MAX. LOUVRE OPENING ANGLE

DEPTH OF FRAME

FACE FRAME WIDTH

INFILL FOR LOUVRE

THICKNESS OF GLASS

STANDARD GLASS

CONTROLS

AIR PERMEABILITY (EN 12207)

RESISTANCE TO WEATHER (EN 12208)

RESISTANCE TO WIND (1) (EN 12210)

SMOKEVENT (EN 12101-2)

UVALUE (EN ISO 10077-1)

CVVALUE

SOUND INSULATION

Non-thermally broken extruded aluminium outer frames, non-thermally broken louvre frames. Double glazed louvres with 28mm thick clear toughened glass.

300mm - 2000mm

300mm - 3000mm per ventilator

150mm - 350mm

Standard: centre pivoted.
Other types on request.

Max. 90°
(depends on the drive selected)

47mm

40mm

Insulated glazing (2 or 3 panes)
or composite infill panels

28mm

4 mm float, 20 mm gap, 4 mm float

Manual, 24v dc or 230v ac electric
or pneumatic

Class 4 - 0,97m³/hm²
or 0.19m³/hm at 50Pa

Class 5A - watertight up to 200 Pa

Depends on the width of the unit,
the wind strength and louvre height.

Tested and certified unit

Up to max. 1.9 W/m²/K

Up to max. 0.58

Up to max. 36 dB



SUMMARY TECHNICAL INFORMATION

COLTLITE CLS

Non-thermally broken extruded aluminium outer frames. Frameless single glazed overlapping louvres with either 8mm, 10 mm or 12 mm thick float, toughened or laminated glass.

300mm - 1800mm

300mm - 3000mm per ventilator

150mm - 390mm

Standard: centre pivoted.
Other types on request.

Max. 90°
(depends on the drive selected)

47mm

40mm

Single glazing

8, 10 or 12mm

Toughened, Heat toughened or laminated
(from float, toughened - laminated or toughened)

Manual, 24v dc or 230v ac electric
or pneumatic

Class 1 - 19,5m³/hm²
or 3,9m³/hm at 50Pa

Class 2A - watertight up to 100 Pa

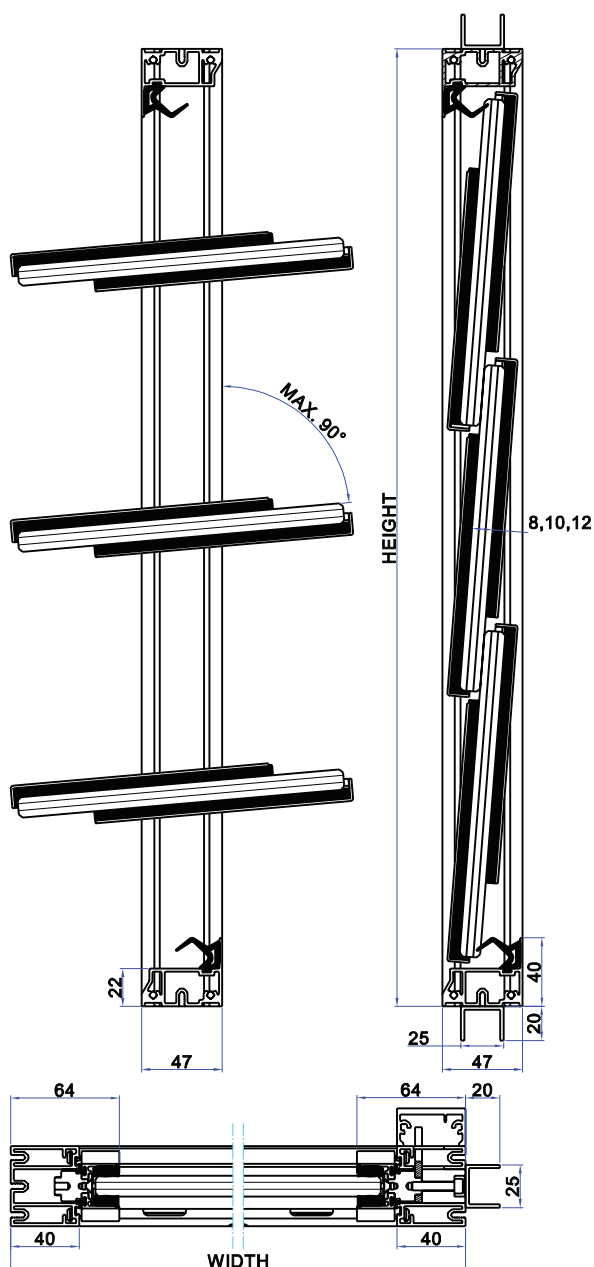
Depends on the width of the unit,
the wind strength and louvre height.

Tested and certified unit

Up to max. 5.8 W/m²/K

Up to max. 0.65

Up to max. 27 dB



DESCRIPTION

VENT OVERALL WIDTH
*Note (1)

VENT OVERALL HEIGHT
*Note (2)

BLADE PITCH
(OR LOUVRE HEIGHT)
*Note (3)

LOUVRE PIVOTS

MAX. LOUVRE
OPENING ANGLE

DEPTH OF FRAME

FACE FRAME WIDTH

INFILL FOR LOUVRE

THICKNESS OF GLASS

GLASS TYPES

CONTROLS

AIR PERMEABILITY
(EN 12207)

RESISTANCE TO WEATHER
(EN 12208)

RESISTANCE TO WIND (1)
(EN 12210)

SMOKEVENT (EN 12101-2)

UVALUE (EN ISO 10077-1)

CVVALUE

SOUND INSULATION

NOTES

* (1) Outer frame dimensions. For throat dimensions subtract 80mm.

* (2) Ventilators over a certain width and height are separated for ease of transportation and handling.

* (3) Maximum louvre weight 20 kg. Aspect ratio of louvre height to louvre length must be less than 1:10.

These data are indicative only.

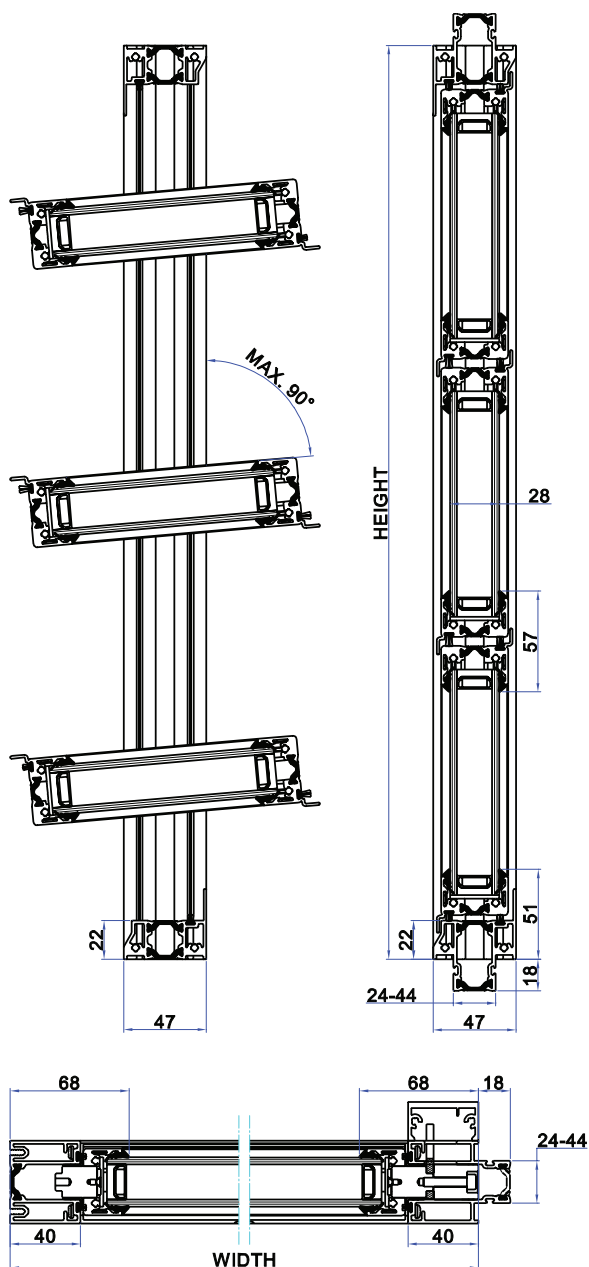
The ventilator should be designed to resist the design wind loads. Colt can guarantee the structural stability for a bank of ventilators with an area up to 6m² assuming a design wind load of 1500 Pa. Above this, a structural engineering calculation will be required.

Units up to 1.5m high may be supplied to a special order subject to technical approval by Colt.



SUMMARY TECHNICAL INFORMATION

COLTLITE CLT



NOTES

*(1) Outer frame dimensions. For throat dimensions subtract 80mm.

*(2) Ventilators over a certain width and height are separated for ease of transportation and handling.

*(3) Maximum louvre weight 20 kg. Aspect ratio of louvre height to louvre length must be less than 1:10.

These data are indicative only.

The ventilator should be designed to resist the design wind loads. Colt can guarantee the structural stability for a bank of ventilators with an area up to 6m² assuming a design wind load of 1500 Pa. Above this, a structural engineering calculation will be required.

Units up to 1.5m high may be supplied to a special order subject to technical approval by Colt.

DESCRIPTION

VENT OVERALL WIDTH

*Note (1)

VENT OVERALL HEIGHT

*Note (2)

BLADE PITCH (OR LOUVRE HEIGHT)

*Note (3)

LOUVRE PIVOTS

MAX. LOUVRE OPENING ANGLE

DEPTH OF FRAME

FACE FRAME WIDTH

INFILL FOR LOUVRE

THICKNESS OF GLASS

STANDARD GLASS

CONTROLS

AIR PERMEABILITY (EN 12207):

RESISTANCE TO WEATHER (EN 12208)

RESISTANCE TO WIND (1) (EN 12210)

SMOKEVENT (EN12101-2)

UVALUE (EN ISO 10077-1)

CVVALUE (MAXIMUM)

SOUND INSULATION

Thermally broken extruded aluminium outer frames and louvre frames. Double glazed louvres with 28mm thick clear toughened glass.

300mm - 2000mm

300mm - 3000mm per ventilator

150mm - 350mm

Standard: centre pivoted.
Other types on request.

Max. 90°
(depends on the drive selected)

47mm

40mm

Insulated glazing (2- or 3 panes)
or composite infill panels

28mm

4 mm float, 20 mm gap, 4 mm float

Manual, 24v dc or 230v ac electric
or pneumatic

Class 3 - 1.89m³/hm²
or 0.37m³/hm at 50Pa

Class 4A - watertight up to 150 Pa

Depends on the width of the unit,
the wind strength and louvre height.

Tested and certified unit

Up to max. 1.5 W/m²/K

Up to max. 0.58

Up to max. 41 dB

COLTLITE:
PROJECTS

Image:
Newmarket Station, Auckland.

Type:
CLS glazed



Image:
Waurn Ponds Library, Geelong.

Type:
CLT glazed



Image:
Southmead Hospital, Bristol.

Type:
CLT glazed

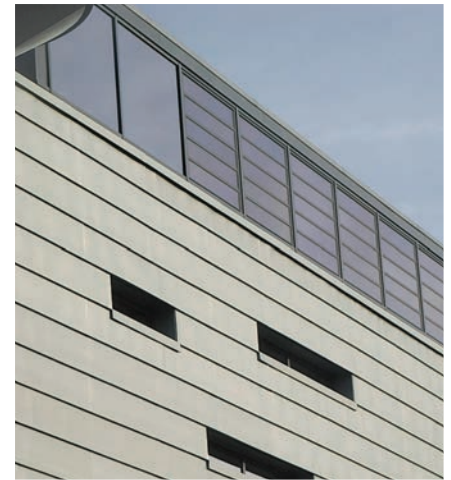


Image:
Nottingham University, Gracie Building.

Type:
CLT glazed



Image:
Vendspace, France.

Type:
CLT insulated



Image:
Internos Hoogezand, Holland.

Type:
CLT glazed



Image:
Möbel Markt Sconto, Germany.

Type:
CLT insulated

COLTLITE:
PROJECTS

Image:
Hôpital Robert Schuman Metz, France.

Type:
CLT glazed



COLT INTERNATIONAL LIMITED

New Lane | Havant | Hampshire | PO9 2LY | Tel +44(0)23 9245 1111 | Fax +44(0)23 9245 4220

info@coltgroup.com | www.coltinfo.co.uk