



Submittal Data Information

SKV Series SelfSensing Vertical Close Coupled Pumps

301-2199-L

EFFECTIVE: APRIL 1, 2013

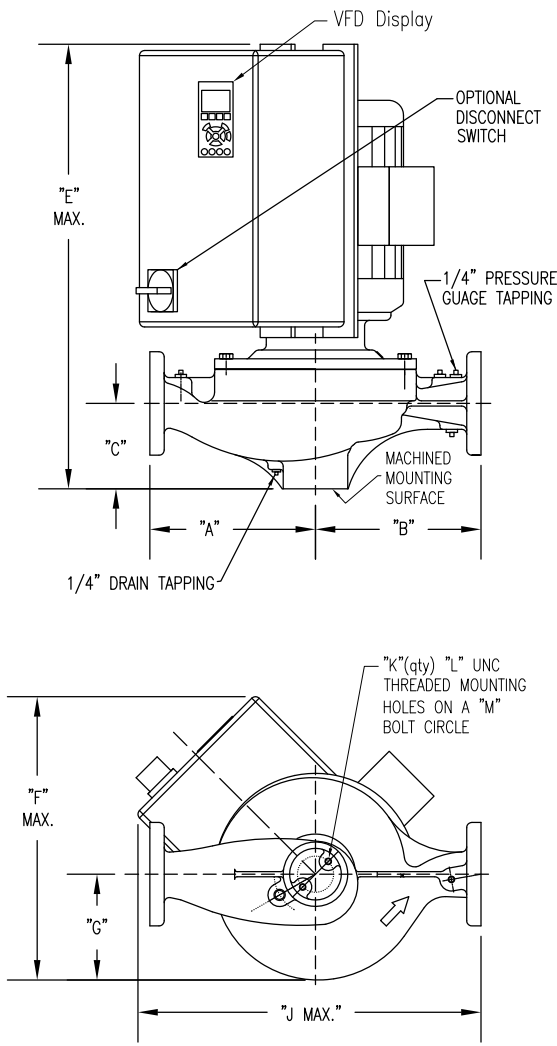
SUPERSEDES: NEW

1760 RPM MODEL 8011-40

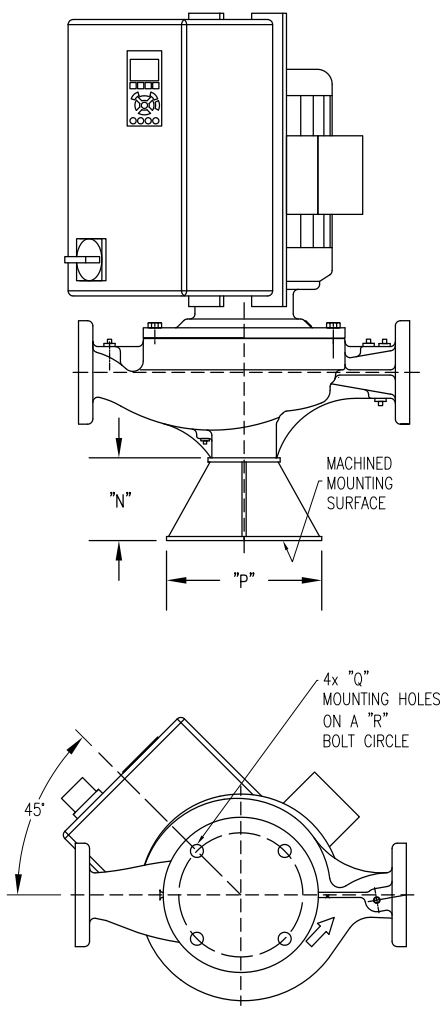
JOB _____ ENGINEER _____

CONTRACTOR _____ REP. _____

ITEM NO.	MODEL NO.	IMPELLER DIA.	G.P.M.	HEAD/FT.	H.P.	ELEC. CHAR.
----------	-----------	---------------	--------	----------	------	-------------



PUMP WITH OPTIONAL SUPPORT STAND



DIMENSIONS (Dimensions are for both NEMA1 and NEMA12)

*A & B Dimensions apply for all pump sizes.

Model No.	Conn.	Motor Frame	HP 1760 RPM	Flange Size (ASA)	A*	B*	C	E MAX	F MAX	G	J MAX	K	L	M	N	P	Q	R
8011-40	8 X 8 (203 X 203)	324JM	40	8 (203)	20.00 (508) ANSI #125 20.50 (521) ANSI #250	19.50 (495) ANSI #125 20.00 (508) ANSI #250	9.25 (235)	50.44 (1281)	54.25 (1378)	12.75 (324)	62.00 (1575)	4	1/2-13	9.00 (229)	7.20 (183)	16.50 (419)	0.75 (19)	14.50 (368)

English dimensions are in inches. Metric dimensions are in millimeters. Metric data is presented in (). Do not use for construction purposes unless certified.

MATERIALS OF CONSTRUCTION

	BRONZE FITTED			ALL IRON		
	Standard Pump Construction		Optional	Standard Pump Construction		Optional
	125# Flange	250# Flange	125# or 250#	125# Flange	250# Flange	125# or 250#
Casing	Cast Iron ASTM A48/A48M-03 Class 30A	Ductile Iron ASTM A536-84 Grade: 65-45-12	N/A	Cast Iron ASTM A48/A48M-03 Class 30A	Ductile Iron ASTM A536-84 Grade: 65-45-12	N/A
Impeller	Bronze ASTM B584-98A C87500	Bronze ASTM B584-98A C87500	N/A	Cast Iron ASTM A48/A48M-03 Class 30A	Cast Iron ASTM A48/A48M-03 Class 30A	N/A
Wear Ring	N/A	N/A	Bronze ASTM B584-98A C92200	N/A	N/A	N/A
Shaft	Carbon Steel	Carbon Steel	Stainless Steel AISI 416 ASTM A582	Carbon Steel	Carbon Steel	Stainless Steel AISI 416 ASTM A582
Shaft Sleeve	Bronze ASTM B584-98A C92200	Bronze ASTM B584-98A C92200	Stainless Steel TYPE 303 ASTM A276	Stainless Steel TYPE 303 ASTM A276	Stainless Steel TYPE 303 ASTM A276	N/A
Mechanical Seal	Ceramic / EPT	Ceramic/EPT	Tungsten Carbide/EPT	Ceramic / EPT	Ceramic/EPT	Tungsten Carbide / EPT
Seal Flush Line	Copper	Copper	CF	Stainless Steel	Stainless Steel	CF
Support Stand	N/A	N/A	Ductile Iron ASTM A536-84 Grade: 65-45-12	N/A	N/A	Ductile Iron ASTM A536-84 Grade: 65-45-12

CF - Consult Factory

NA - Not Available

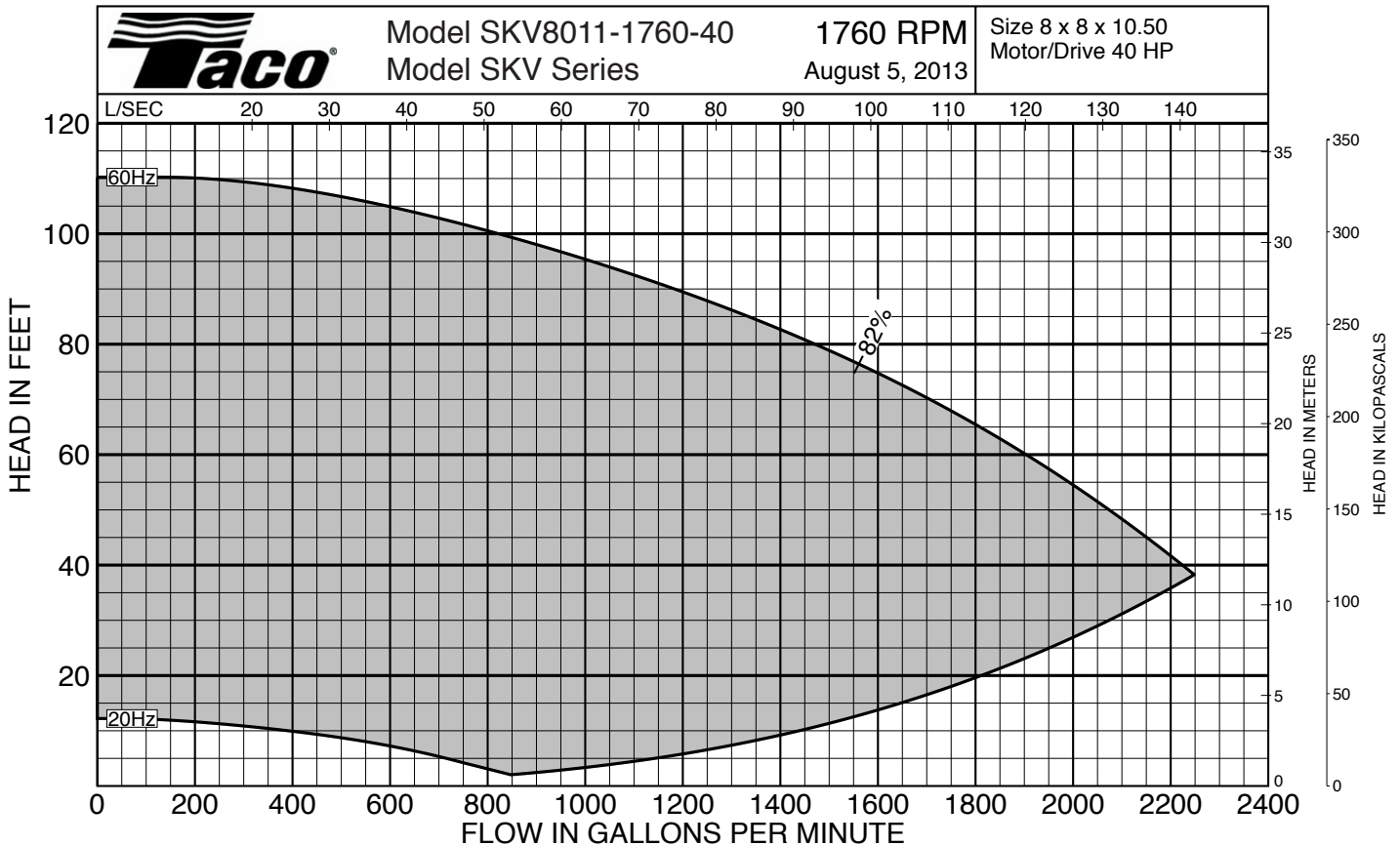
OPERATING INSTRUCTIONS

	Standard		Optional
	ANSI Class 125	ANSI Class 250	
Flange	ANSI Class 125	ANSI Class 250	
Pressure	175 PSIG* (1210 KPA)	300 PSIG** (2070 KPA)	CF
Temperature	250°F (120°C)	250°F (120°C)	CF

Motors: All NEMA Standard (T Frame)
 * In accordance with ANSI Standard B16.1 Class 125
 ** In accordance with ANSI Standard B16.1 Class 250 Dim.

MAXIMUM ASSEMBLY WEIGHT

Motor Frame	Weight without Optional Stand Lbs (Kg)	Weight with Optional Stand Lbs (Kg)
324JM - 326JM	1249 (567)	1349 (612)



Comments: _____

SPECIFICATIONS:

MOTOR DESIGN DATA	
HP	
Volts	
Frequency	Hz
Phase	

DRIVE DATA:	
Protocols (Standard)	BACnet™, Modbus RTU, N2 Metasys, FLN Apogee, FC Protocol
Protocols (Optional)	<input type="checkbox"/> LonWorks® <input type="checkbox"/> DeviceNet <input type="checkbox"/> Profibus
Enclosure	<input type="checkbox"/> NEMA Type 12 / IP55 <input type="checkbox"/> NEMA Type 4X / IP66
I/O (Standard)	6 Digital Inputs / 2 Digital Outputs 1 Analog Current Output / 2 Analog Inputs 2 Pulse Inputs 2 Form C Relays
Additional Control Options	<input type="checkbox"/> None <input type="checkbox"/> General Purpose I/O <input type="checkbox"/> Relay Card <input type="checkbox"/> 24VDC Supply <input type="checkbox"/> Analog I/O
Disconnect Switch	<input type="checkbox"/> Mechanical <input type="checkbox"/> Fused
ENI/RFI Control	Integrated filter designed to meet EN61800-3
Harmonic Suppression	Dual DC-link chokes (Equivalent: 5% AC line reactor) Supporting IEEE 519-1992 requirements
Cooling	Fan-cooled through back channel
Ambient Temperature	-10°C to 45°C up to 1000 meters above sea level -14°F to 113°F up to 3300 feet above sea level

CONTROL CONNECTIONS:	
Analog input (follower signal)	2; selectable voltage or current, direct and inverse acting
Digital inputs (programmable)	6 (2 can be used as digital outputs)
Analog outputs (programmable)	1; 0/4 to 20 mA
Relay outputs (programmable)	2 standard Form C 240 V AC, 2 A; 1 or 3 additional optional
Auxiliary voltage	+24 V DC, maximum 200 mA
Communication port	1 RS485, 1 USB=



TACO INC., 1160 Cranston Street, Cranston, RI 02920 Telephone: (401) 942-8000 Fax: 942-2360
TACO (Canada), Ltd., 6180 Ordan Drive, Mississauga, Ontario L5T 2B3 Telephone: (905) 564-9422 Fax: (905) 564-9436
 Visit our website at: www.taco-hvac.com

Printed in USA
 Copyright 2013
 TACO, Inc.