

# My Design Snap App Assistant Book



# MEMO

# TABLE OF CONTENTS

<b>OVERVIEW</b>	<b>2</b>
• Learn about the application's capabilities .....	2
• Learn how to view the instruction videos for the application that are on the machine.....	4
<b>Enabling a Wireless Network Connection</b>	<b>5</b>
• Learn how to connect the machine to a wireless network .....	5
• Learn how to install the application from the machine.....	5
• Learn how the application connects with the machine.....	6
• Learn how to Calibrate Your Mobile Device Lens.....	6
<b>Positioning an Embroidery Design</b>	<b>7</b>
• Learn how to position a design using the Easy mode .....	7
• Learn how to calibrate the hoop and position a design using the Advanced mode .....	8
<b>Creating Embroidery Data in My Design Center within the Hoop</b>	<b>10</b>
• Learn how to use My Design Snap on your smartphone to photograph the fabric pattern to use My Design Center to draw an embroidery design on top of the fabric pattern.....	10
<b>Creating Embroidery Data in My Design Center with Image from the Smartphone</b>	<b>12</b>
• Learn how to transfer image data saved on the smartphone to the machine, to use My Design Center to convert the image to embroidery data.....	12

# OVERVIEW

This manual will help you learn how to use the My Design Snap Positioning application through step-by-step instructions that follow along with the instruction videos on the Machine.

We are sure that the brilliant features of My Design Snap will make your projects spectacular.

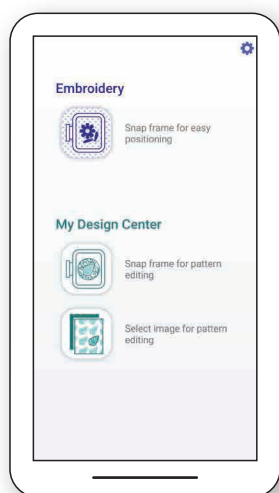
Below is a general explanation of how the application works. Each step will be more thoroughly explained and illustrated later in the manual.

To get started, you will need to:

- Install the application from your machine's settings screen or search for the app called **"My Design Snap"** (in App Store for iOS or in Play Store for Android™)
- Connect your Brother machine to your wireless network
- Connect your phone to the same wireless network

Each time you open the application, you will be guided through the necessary steps for the application to find and connect to the Brother machine and to send your image to the machine.

There are three functions available within the application:



Select the first icon to position an embroidery design.

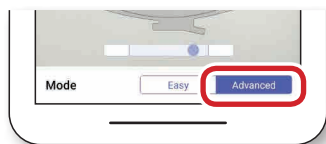


Select the second icon to create an embroidery pattern in My Design Center and then place the design in a specific location within the hoop.



Select the third icon to select an image stored on your smartphone to create an embroidery pattern in My Design Center.

The first two options in the application use the codified embroidery frames included with your Brother machine. These two functions allow you to select an easy mode for placement or an advanced mode for more precise placement.



When you select the advanced mode, you will use an embroidery positioning sticker to calibrate the frame. You will then be able to manually position the design or automatically align the design with the positioning sticker.

The second and third options in the application work with your machine's My Design Center function to create or edit embroidery data. You will be able to use the image from your smartphone to:



Load the hooped fabric or art file as the background when creating your pattern



Convert a line drawing to embroidery data



Convert an illustration to embroidery data

This manual is intended to introduce the basic functions of the application and how it interacts with your Brother machine. For more information about how to create designs in My Design Center, please refer to the relevant chapter of My Design Center in your machine's Operation Manual.

## System Requirements for My Design Snap

---

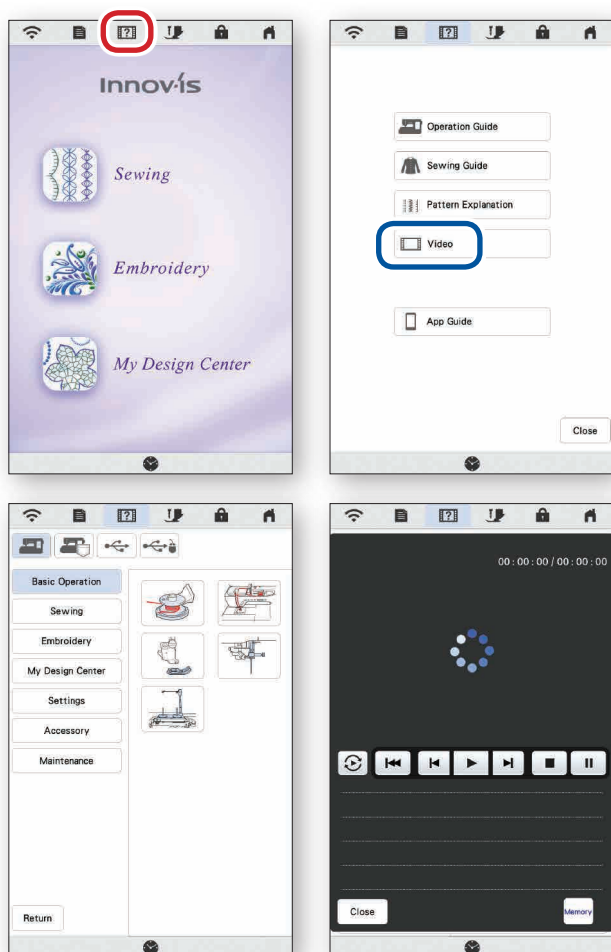
To be able to install and use the App, devices must meet the following minimum requirements:




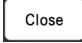
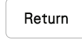
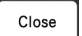
Android 5.0 or later / iOS 10.0 or later.

For the recommended smart devices, please refer to [Brother Solutions Center](#).

## Viewing Instructional Videos

There are also several instructional videos installed on your Machine which demonstrate the application's functions. Be sure to watch these videos and read this instruction manual before using the application.



1. Press **Sewing Machine Help** on the Home Screen.
2. **Select Video**. The new page displays a list of video topics. Touch a topic to view the available videos.
3. Press **Play**  to watch.
4. Press **Stop**  to end.
5. Press **Repeat**  to watch again.
6. Press **Close**  to return to the video list.
7. Press **Return**  to go back to the main screen for Sewing Machine Help.
8. Select **Close**  to exit.

The built-in instructional videos for the application can be found in these categories:

### Settings:

- Enabling a Wireless Network Connection ([see page 5](#) of this book)

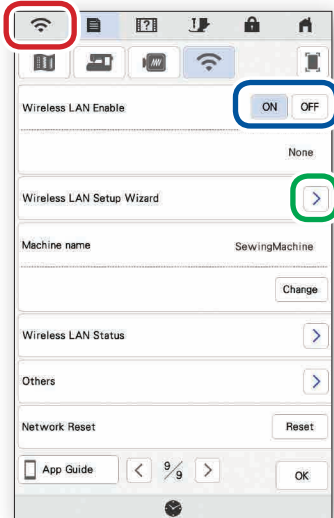
### Embroidery:

- Using My Design Snap to Position an Embroidery Design ([see page 10](#) of this book)
- Positioning Using My Design Snap and an Embroidery Positioning Sticker ([see page 11](#) of this book)
- Converting an Image on the smartphone to Embroidery Data ([see page 13](#) of this book)
- Drawing Embroidery Data on Fabric ([see page 10](#) of this book)
- Converting a Line Drawing to Embroidery Data ([see page 12](#) of this book)
- Converting an Image to Embroidery Data ([see page 12](#) of this book)

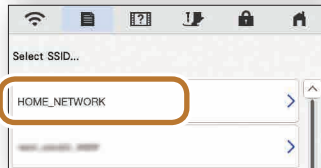
# Enabling a Wireless Network Connection

## Enabling a Wireless Network Connection on Your Brother Machine

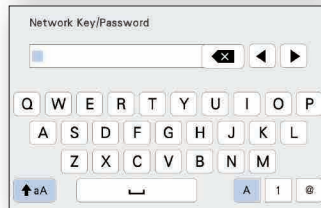
In order to connect your machine to a wireless network, the security information (SSID and network key) for your home network will be required. The network key may also be called a password, security key or encryption key. First, find your security information and note it.



1. Press **Wireless LAN key** at the top of the screen.
2. Set **Wireless LAN Enable** to ON.
3. Press **Wireless LAN Setup Wizard**.



4. Select the **desired network below Select SSID**.



5. Specify settings for SSID and Password, and then press OK. This completes the connection.

## Installing the Application

To install the application using your Brother machine, you will need to have a QR Reader app installed. Otherwise, search for the app called **"My Design Snap"** (in App Store for iOS or in Play Store for Android)



Press the smartphone key in the upper-right corner of the screen.

When the My Design Snap icon and QR codes appear, scan the QR code for your smartphone.



Android

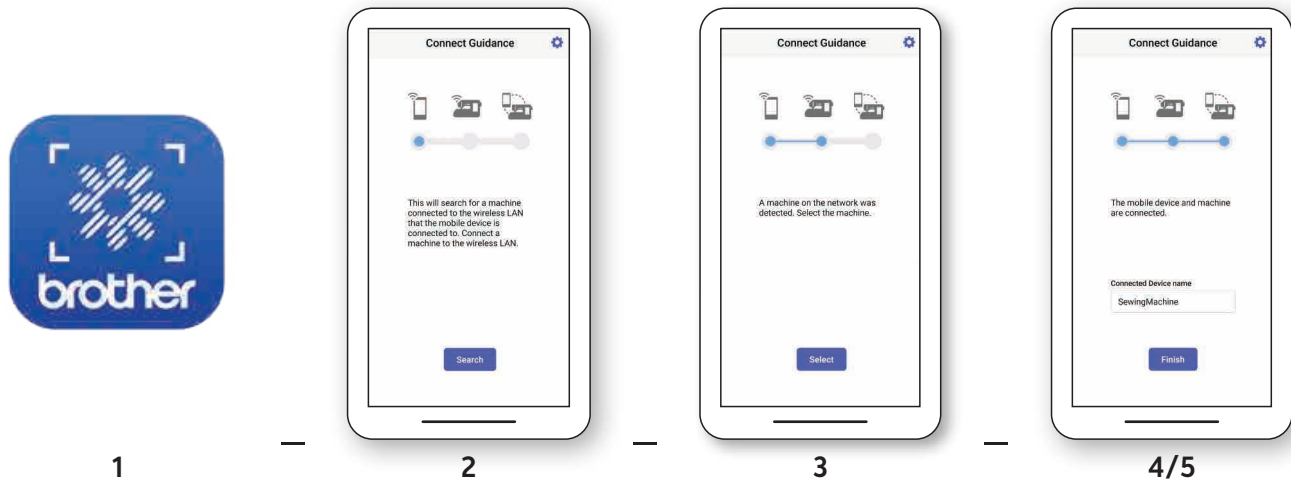


iOS

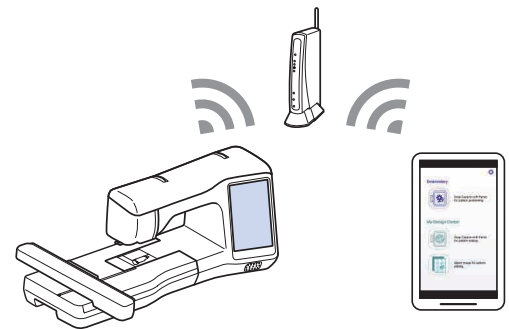
## Connecting the Application to Your Brother Machine

You will need to check your smartphone's WLAN settings to ensure that it is connected to the same network as your Brother machine. Before opening the application on your smartphone, be sure to turn on your Brother machine and enable the wireless LAN.

Each time you open the My Design Snap application, the application will search for then pair with your Brother machine.

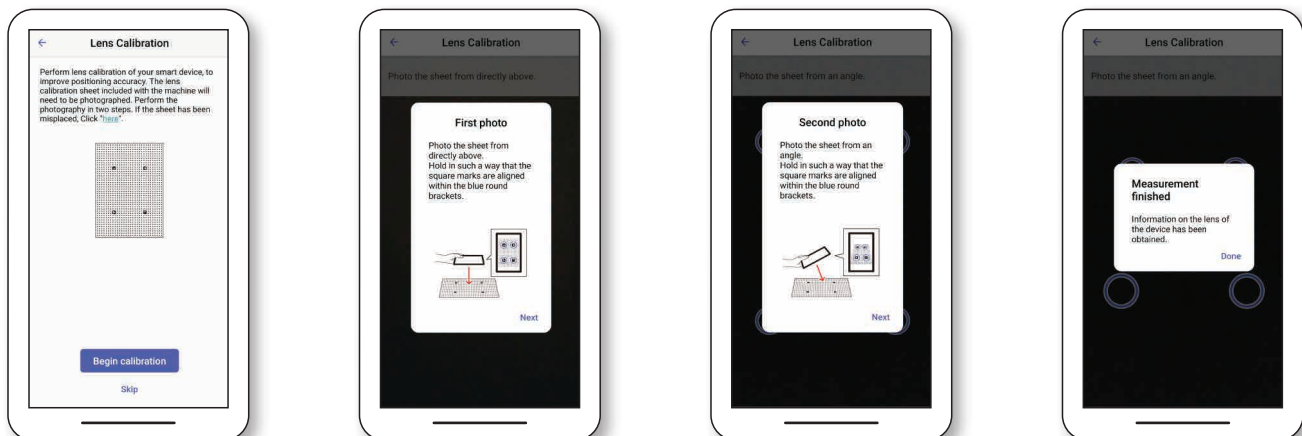


1. After My Design Snap is installed on the smartphone, tap its icon to start it.
2. Tap the Search key to search for the machine that is connected to the same wireless LAN.
3. Tap Select key.
4. Select your machine in the Select Device screen. For this example, the name appears as "SewingMachine", but this can be changed from your machine.
5. Tap Finish key.



## Mobile Device Lens Calibration

When using the My Design Snap app, you may be prompted to calibrate the lens of your smartphone for improved positioning accuracy. The app will guide you through these steps:







# Positioning an Embroidery Design

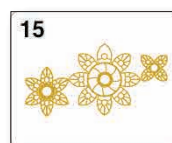
## Positioning a Design Using the Easy Mode

To use the My Design Snap app to position a design, you will first need to **hoop the fabric** (with stabilizer) in one of the codified hoops and **set an embroidery design**.

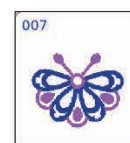
The example shown in this section uses the **Easy mode** in the app and **design 007 from embroidery category 1/subcategory 15**.



Subcategory



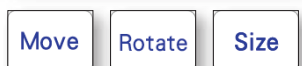
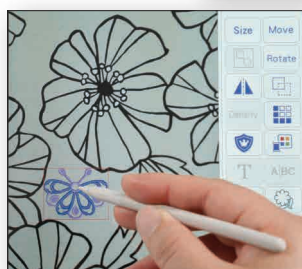
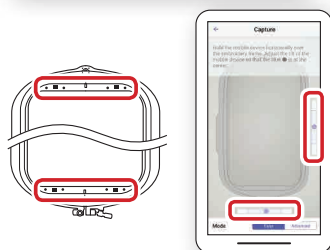
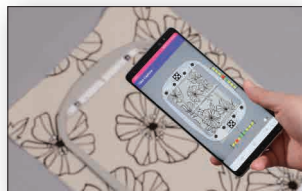
Design



After the selected pattern appears on the machine's screen, press Set key in the lower-right corner of the screen.

On your smartphone, open the app  and select the first icon .

After the application pairs with your machine, leave the mode set to Easy.



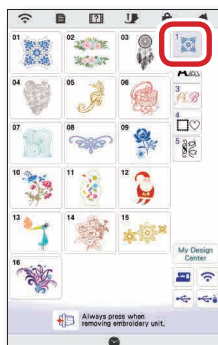
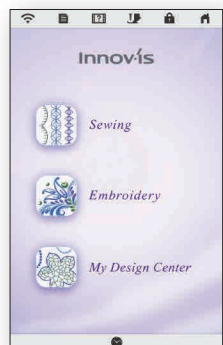
1. When the embroidery frame capture screen appears, **align the frame** on the screen with the actual embroidery frame. The black marks at the top and bottom of the frame must align with the black circles in the app.
2. Position the smartphone so that the blue circles in the bars on the right and bottom of the screen are within the adjustment areas. When the countdown begins, the photo has been successfully taken.
3. Your smartphone will prompt you to send the image to your machine. You will receive confirmation when the design has been sent.
4. After the image is delivered to your machine, you will see a prompt on the machine's screen to update. **Attach the frame** with fabric on embroidery cariedge, then **select OK** to update. The embroidery arm will move.
5. On the machine's LCD screen, the **embroidery pattern** that you set appears in the **fabric** that was photographed. **Press Edit key** in this screen to move, rotate, and/or resize the embroidery pattern.
6. Embroider the design to complete the process.



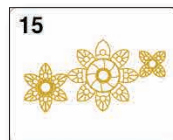
## Positioning a Design Using the Advanced Mode

To use the My Design Snap app to position a design, you will first need to **hoop the fabric** (with stabilizer) in one of the codified hoops and **set an embroidery design**.

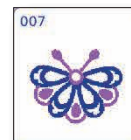
The example shown in this section uses the **Advanced mode** in the app and **design 007 from embroidery category 1/subcategory 15**.



Subcategory



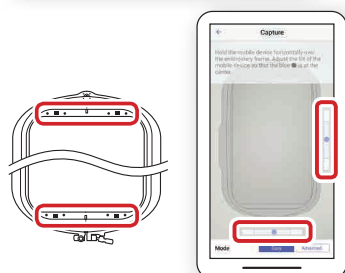
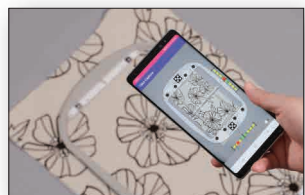
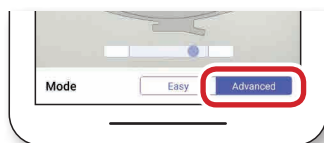
Design



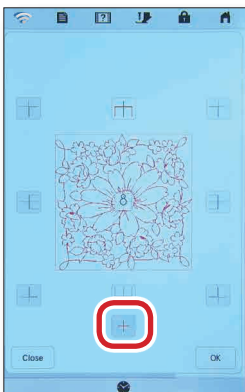
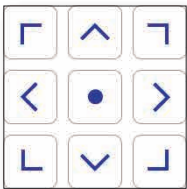
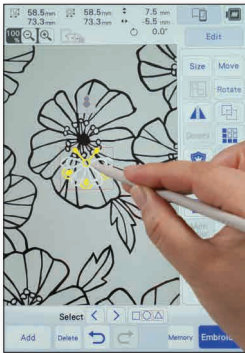
After the selected pattern appears on the machine's screen, **press Set key** in the lower-right corner of the screen.

On your smartphone, open the app  and select the first icon .

After the application pairs with your machine, **change the mode to Advanced**.



1. When you select the advanced mode, you will be prompted to **attach an embroidery positioning sticker** where you want the design to stitch.
2. Attach the sticker so that the center dot in the lower circle aligns with one of nine reference points for placement: center, upper left, upper center, upper right, left center, right center, lower left, lower center, and lower right.
3. When the embroidery frame capture screen appears, **align the frame on the screen with the actual embroidery frame**. The black marks at the top and bottom of the frame must align with the black circles in the app.
4. Position the smartphone so that the blue circles in the bars on the right and bottom of the screen are within the adjustment areas. When the countdown begins, the photo has been successfully taken.
5. Your smartphone will prompt you to send the image to your machine. You will receive confirmation when the design has been sent.



6. On the machine's LCD screen, the **embroidery pattern** that you set appears in the **fabric** that was photographed. The **embroidery positioning sticker** is also visible on the LCD screen.
7. The carriage will be positioned so that the beam of the W+ embroidery foot is very close to the center of the bottom circle of the positioning sticker. Use the arrow keys (shown to the left) to **align the LED pointer** with the center of bottom circle of the **embroidery positioning sticker**, and then **press OK key**. By calibrating the position in this way, the embroidery pattern can be precisely positioned.
8. **Select the Edit key** to display the editing window. **Select the Size key**, adjust the design to the desired size, and then **press OK key**.
9. **Select the Embroidery key** in the lower right corner of the screen.
10. **Select the Layout key** and then the **positioning sticker key**.
11. To position the design so that the **design's center** matches the embroidery positioning sticker, **select the Center key**, and then press **OK key**. The embroidery pattern will snap to the position and angle of the embroidery positioning sticker.  
  
You can use this same process for any of the nine reference points.
12. Check the design position on the fabric background. If necessary, use the move and rotate tools to perfect the design's position.
13. Embroider the design to complete the process.



## Creating Embroidery Data in My Design Center within the Hoop

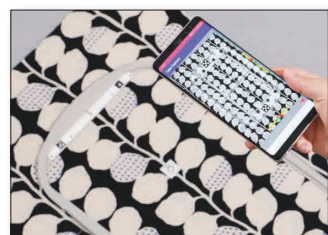
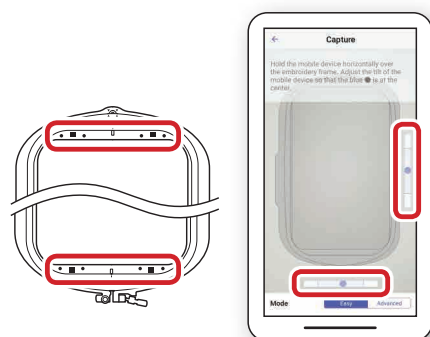
With the My Design Snap app, an image photographed with a smartphone can be used as a background in My Design Center. Details can be added to the background, and the drawing can be converted to embroidery data. The combination of the fabric pattern and hand-drawn embroidery further broadens your range of expression.

One practical application for this function is adding design details to a fabric.

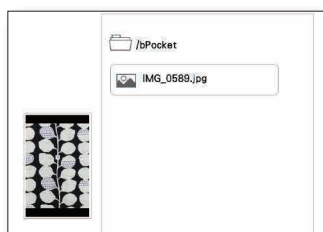
To create embroidery data in My Design Center to be stitched in a specific location, you will first need to **hoop the fabric** (with stabilizer) in one of the codified hoops and open My Design Center on the machine's Home screen.

On your smartphone, open the app  and select the second icon .

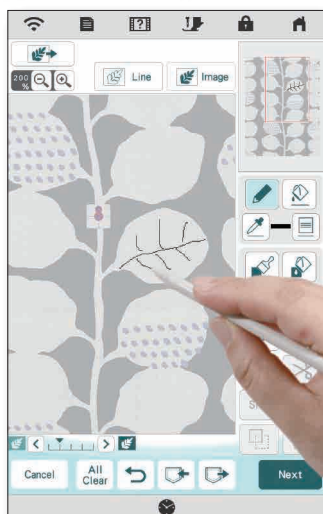
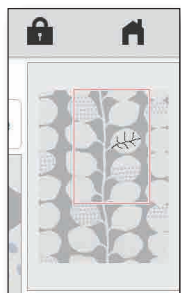
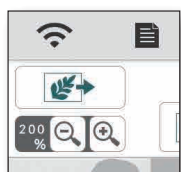
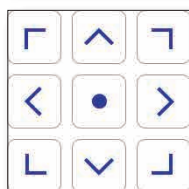
After the application pairs with your machine, set the mode to Easy or Advanced, depending on the placement accuracy needed. The example below uses the Advanced mode for precise positioning.



1. When you select the advanced mode, you will be prompted to **attach an embroidery positioning sticker**. The sticker will be used for calibration only, so its exact position and/or angle is not important.
2. When the embroidery frame capture screen appears, **align the frame on the screen with the actual embroidery frame**. The black marks at the top and bottom of the frame must align with the black circles in the app.
3. Position the smartphone so that the blue circles in the bars on the right and bottom of the screen are within the adjustment areas. When the countdown begins, the photo has been successfully taken.
4. Your smartphone will prompt you to **send the image** to your machine. You will receive confirmation when the design has been sent.
5. **Attach the embroidery frame** to the machine.
6. **Press Load key** at the top of the pattern drawing screen of My Design Center.
7. On the machine's LCD screen, **Press the wireless network** connection key to retrieve the image.



Set



8. **Select the image** transferred from the smartphone, and then press Set key.
9. The carriage will be positioned so that the beam of the W+ embroidery foot is very close to the center of the bottom circle of the positioning sticker. Use the arrow keys (shown to the left) to **align the LED pointer** with the center of bottom circle of the **embroidery positioning sticker**, and then **press OK key**. By calibrating the position in this way, the embroidery pattern to be created can be precisely positioned.
10. The **fabric** that was photographed and the **embroidery positioning sticker** will be displayed on the machine's LCD screen.
11. Display the screen enlarged with **Zoom** key in the upper-left corner of the screen.
12. Move the red frame in the pattern preview area until the area where you want to draw the embroidery appears in the pattern drawing area.
13. With the touch pen (stylus), **draw the embroidery lines** on top of the background appearing in the pattern drawing area.
14. **Press Next key** to continue to the stitch setting screen.
15. On this screen, you can **select the different regions and lines** within the design and make change to the stitch settings. Refer to your machine's Operation Manual for more information about My Design Centers feature and functions.
16. After assigning stitch types and properties, **select Preview**. Set the design and convert to embroidery data.
17. Embroider the design to complete the process.

Another practical application for loading an image as a backdrop is adding decorative stitching around an embroidered pattern. This process is explained in the machine's Operation Manual. For the precision required for this type of project, we recommend using the Advanced mode of the application.





## Creating Embroidery Data in My Design Center with Image from the Smartphone

Your machine's My Design Center function allows you to create embroidery data from images transferred by either a USB media or from the My Design Snap application. The images are divided into two categories: Line drawings and illustrations.

### Line Drawings



- Must be drawn clearly using lines with approximately 1 mm thickness
- Should be drawn in a strong contrast

If the lines are too short or gathered too densely, they will not be loaded correctly.

If you cannot convert the line drawing as expected, you can load the image as a background and use the stylus to trace the elements of the drawing.

Line drawings are converted without recognizing the thickness of lines. If you want to change the thickness of lines, specify in the settings screen.

Line drawings are converted as black lines. You can change the color.

For more information about the process, refer to your machine's Operation Manual.

### Illustrations





- Must be clearly drawn, with no gradation, fading or blurriness
- Must be at least a 5mm (approximately 1/4 inch) square
- Must be extremely simple images

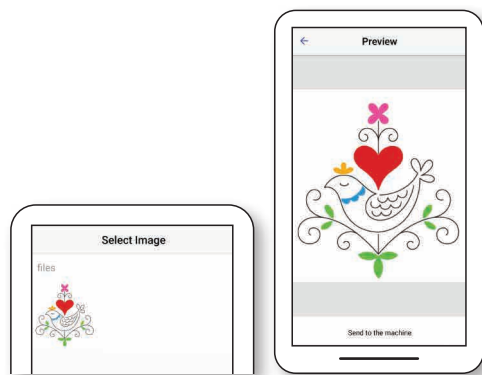
If the image is too complex, it will not be loaded correctly.

If you cannot convert the illustration as expected, you can load the image as a background and use the stylus to trace the elements of the drawing.

For more information about the process, refer to your machine's Operation Manual.





1. To create embroidery data in My Design Center with data transferred from the app, open My Design Center on the machine's Home screen.
2. To load an image stored on your smartphone, open the app  and select the third icon .
3. Follow the steps to allow the application to pair with your machine.



4. You will be prompted to select an image. Follow the steps to transfer the image to the machine.
5. Your smartphone will prompt you to **select an image** on your smartphone. After selecting and sending the image, you will receive confirmation when the image has been sent.



### Line Drawings



6. To convert a line drawing to embroidery data, select the  **Line** icon.
7. On the machine's LCD screen, **Press** the **wireless network** connection key  to retrieve the image.
8. Follow the steps in the machine's Operation Manual to assign stitch types, stitch properties, and colors.

### Illustrations



6. To convert an illustration to embroidery data, select the  **Image** icon.
7. On the machine's LCD screen, **Press** the **wireless network** connection key  to retrieve the image.
8. Follow the steps in the machine's Operation Manual to assign stitch types, stitch properties, and colors.

**brother**  
at your side