

This programming software will install and run on a personal computer. It may be used to update the firmware of the FTDX1200 transceiver when connected to the personal computer.

## **Important**

Before downloading this software, please read the "Important Notes" carefully.

Downloading or installing this software will indicate your acceptance and agreement with the contents of the "Important Notes".

"Transceiver" is used hereafter to refer to the FTDX1200 transceiver.

## **Important Notes**

- All responsibility for the use of this software lies with the customer. Yaesu cannot be held responsible in any way for damage or loss which may be incurred as a result of using this software.
- Copyrights and all other intellectual property rights for the software, as well as the software manual, are the property of YAESU MUSEN CO., LTD.
- The revision, modification, reverse engineering, or decompiling of this software is prohibited. Redistribution, transfer, or resale of downloaded files is also prohibited.
- This software is for individual personal use only.
- If you cannot perform the firmware update yourself, please consult with one of our sales sites or service centers.

## **System Requirements (Operating Environment)**

### **Supported Operating Systems**

- Microsoft® Windows® 8
- Microsoft® Windows® 7
- Microsoft® Windows Vista™ (Service Pack 1 or later)
- Microsoft® Windows® XP (Service Pack 3 or later)

※ To update the TFT Firmware on your FTDX1200, you must first install "Microsoft .NET Framework 3.5" onto the personal computer before beginning the firmware update process.

### **CPU**

CPU which satisfies OS (operating system) requirements

### **RAM (System Memory)**

Sufficient RAM (system memory) to meet or exceed the OS (operating system) requirements

### **HDD (Hard Disk)**

A HDD (hard disk) with capacity to meet or exceed the OS (operating system) requirements

In addition to having sufficient free space on the HDD for the OS to operate, the program requires 20 Mbyte or more of free space.

### **Ports**

An RS-232C interface (COM port) or USB port (USB1.1/USB2.0)

**Caution:** Complete the "virtual COM port driver installation before connecting the SCU-17 to the computer  
Connecting the transceiver to the computer via the USB cable before installation has been completed may result in the wrong driver being installed, and prevent proper operation.

USB Driver (for Performing Version Updates via the USB Port)

Requires SCU-17 (optional) in order to connect to the USB port.

Install the virtual COM port driver on the personal computer before beginning the firmware upgrade process. Please see the **SCU-17** USB Driver (Virtual COM Port Driver) files and instructions on the Yaesu Website for details (<http://www.yaesu.com/>).

### **Cables**

RS-232C straight cable\* or USB cable (AB type). \* : Please have a commercially available cable ready.

## Regarding this Firmware

---

MAIN, DSP, TFT, and FFT firmware are available for the FTdx1200 transceiver. Check your firmware version, and perform firmware updates when needed.

### How to Confirm the Firmware Version (see below)

#### How to Update the MAIN Firmware (see page 3)

Downloading the MAIN Firmware

Transfer Software: YFSW020

Firmware: AH058H\_V\*\*\*\*.SFL

#### How to Update the DSP Firmware (see page 5)

Downloading the DSP Firmware

Transfer Software: FW-DSP

Firmware: AH058H\_V\*\*\*\*.dat

#### How to Update the TFT Firmware (see page 8)

Downloading the TFT Firmware

Transfer Software: TFW

Firmware: TFT\_V\*\*-\*\*.bin

#### How to Update the FFT Firmware (see page 10)

Downloading the FFT Firmware

Transfer Software: FW-FFT

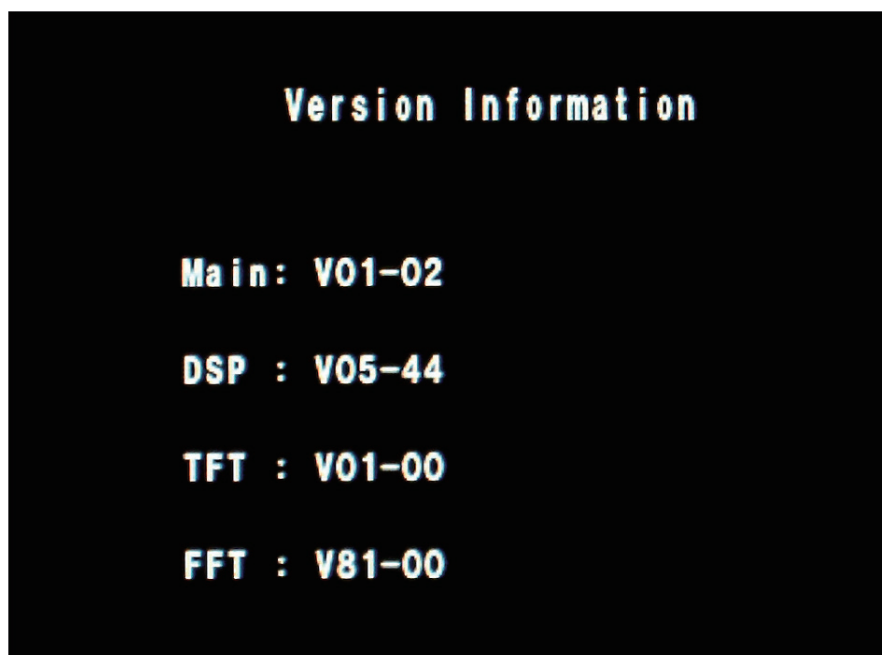
Firmware: AH058Hfft\_V\*\*\*\*.dat

## How to Confirm the Firmware Version

---

Press and hold the [POWER] key to turn the transceiver ON, while pressing and holding the [GEN] key, [50] key, and [ENT] key on the transceiver main panel.

The version of each firmware will be displayed on the TFT screen.

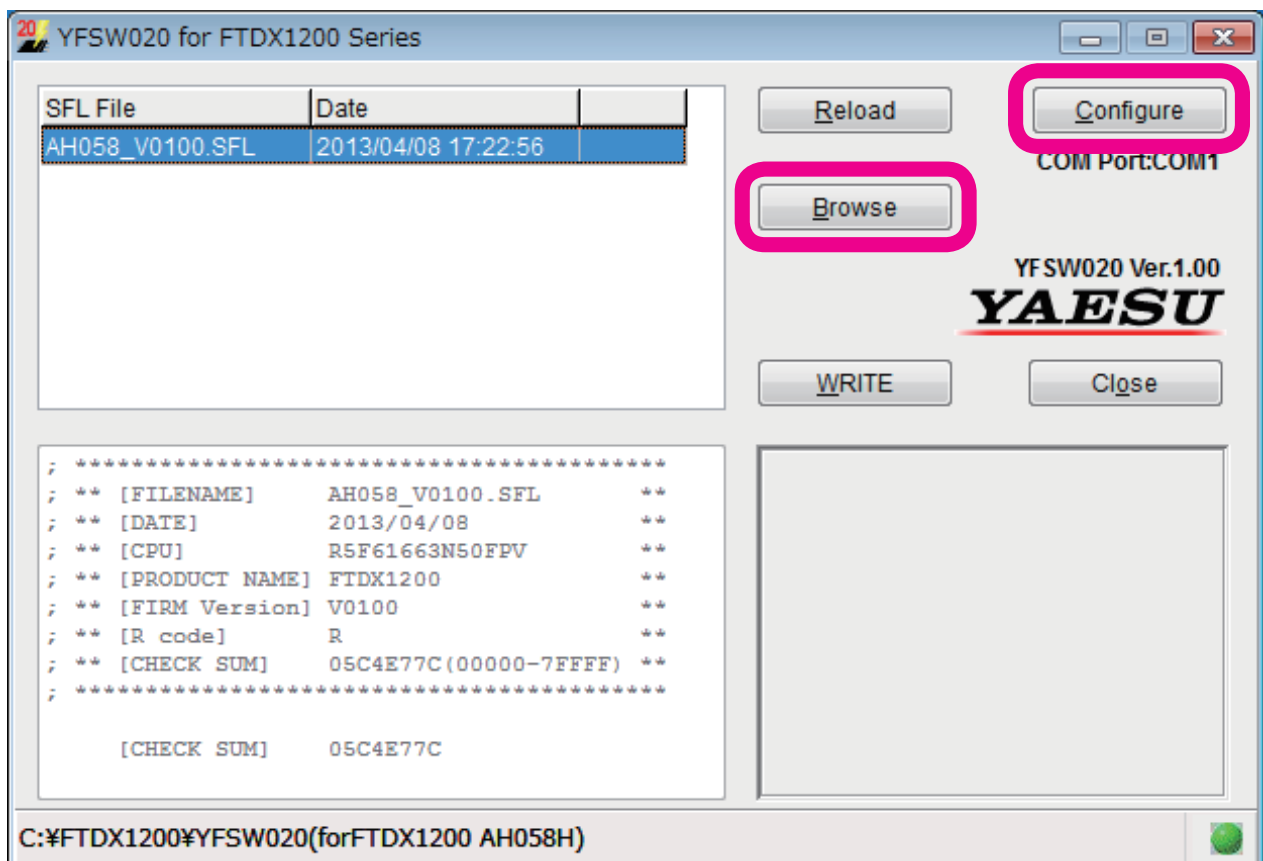


## How to Update the MAIN Firmware

**Preparation:** Download the **YFSW020** transfer software and **AH058\_V01\*\*.SFL** firmware to the same folder, and Unzip the downloaded zip file.

The example below is for Windows® 7.

1. Confirm that the radio is turned OFF then disconnect the DC cable and all other cables from the transceiver.
2. Connect the transceiver CAT terminal and personal computer COM port with an RS-232C straight cable.  
(No driver installation is required when connecting via an RS-232C cable.)  
Alternatively, connect the transceiver unit CAT terminal and personal computer USB port via the **SCU-17** and supplied connection cables.  
(The **SCU-17** virtual COM port driver must be installed in advance.)
3. Confirm that the external DC power supply is turned OFF, and connect the DC cable to the transceiver.  
While pressing and holding the **[UP]** (▲) and **[DOWN]** (▼) keys on the transceiver front panel, turn the external power supply ON. (Do not touch the transceiver POWER switch.)  
**NOTE:** This puts the radio into program mode and the display will be blank.
4. Execute the YFSW020.exe transfer software.  
Click the “Configure” button and set the COM port number.



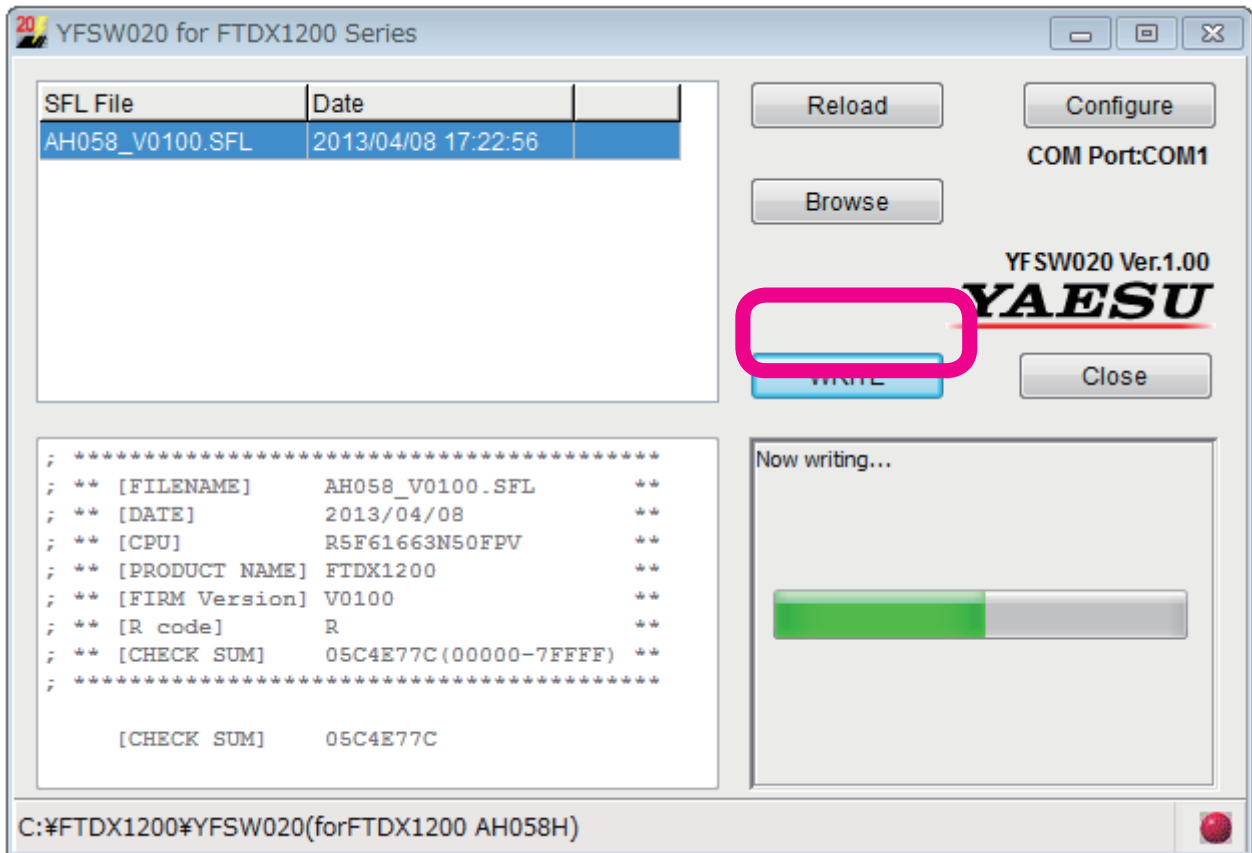
(Use an “Enhanced COM port” when using a USB cable. Please see the **SCU-17** Virtual COM Port Driver instructions on the Yaesu Website for details (<http://www.yaesu.com/>.)

5. Click the “Browse” button on the **YFSW020** transfer software screen, and select the firmware to be transferred (SFL file).
6. Click the “WRITE” button on the YFSW020 transfer software screen. The firmware transfer process will

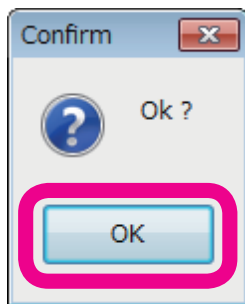
begin.

Please wait until the process has been completed.

When “OK?” is displayed on-screen, the update has been completed.



7. Click the “OK” button.



8. Turn off the external power supply OFF.

9. Disconnect the RS-232C cable, or the USB cable, connecting the transceiver to the personal computer.

10. Turn the external power supply ON.

11. Press and hold the the [FAST] + [LOCK] keys, and then press the [POWER] key on the transceiver main panel, turning the transceiver ON (Reset procedure).

12. Confirm that the transceiver has turned ON, and then press and hold the [POWER] key to turn it off.

This completes the firmware upgrading process.

If there is a problem during the update process, disconnect the DC cable from the transceiver, and turn the external power supply OFF, then close the YFSW020 transfer software, and try again.

## How to Update the DSP Firmware

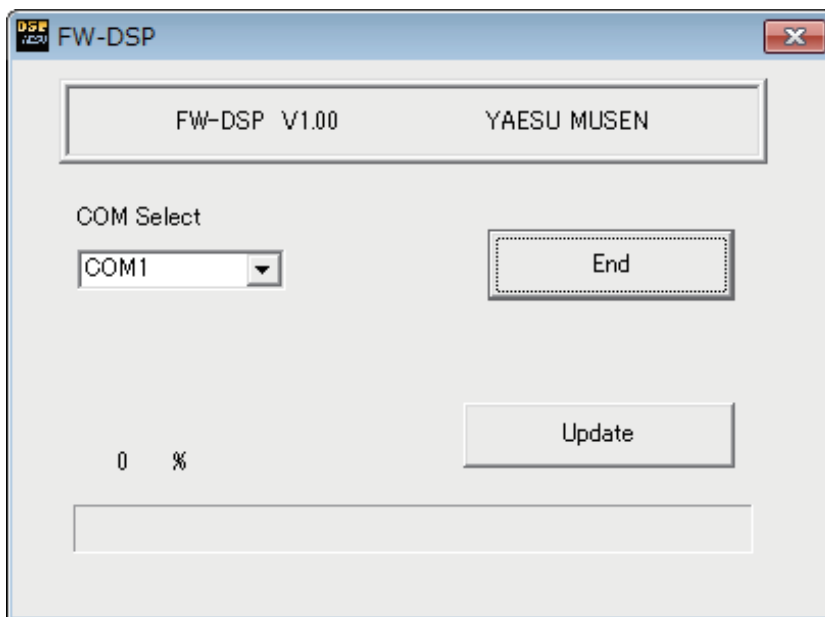
**Preparation:** Download the **FW-DSP** transfer software and **AH058H\_V\*\*.dat** firmware to the same folder, and Unzip the downloaded zip file.

**The example below is for Windows® 7.**

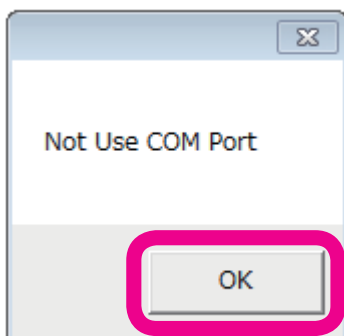
1. Confirm that the radio is turned OFF then disconnect the DC cable and all other cables from the transceiver.
2. Connect the transceiver CAT terminal and the personal computer COM port with an RS-232C straight cable.  
(No driver installation is required when connecting via an RS-232C cable.)  
Alternatively, connect the transceiver CAT terminal and the personal computer USB port via the **SCU-17** and supplied connection cables.  
(The **SCU-17** virtual COM port driver must be installed in advance.)
3. Connect the DC cable to the transceiver, and turn the external power supply ON.  
Press and hold the **[MOX]** + **[BK-IN]** keys while pressing the **[POWER]** key on the transceiver main panel, turning the transceiver ON.  
The transceiver LED indicator will appear as below, and the unit will switch to DSP write mode.
4. Execute the FW-DSP.exe transfer software.  
When the following screen appears, click the “OK” button.



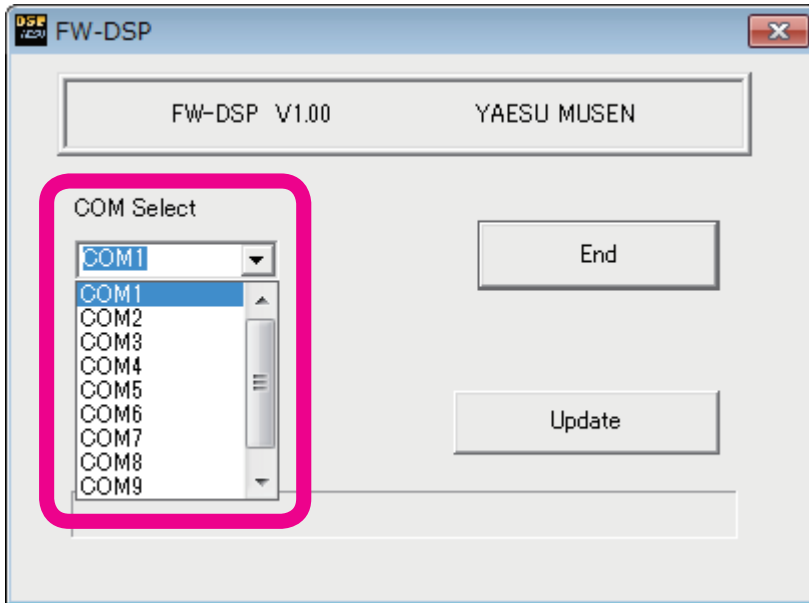
On the **FW-DSP** COM Select screen, set the COM port number.



The COM port number may vary from computer to computer.



(Use an “Enhanced COM port” when using a USB cable. Please see the **SCU-17** Virtual COM Port Driver

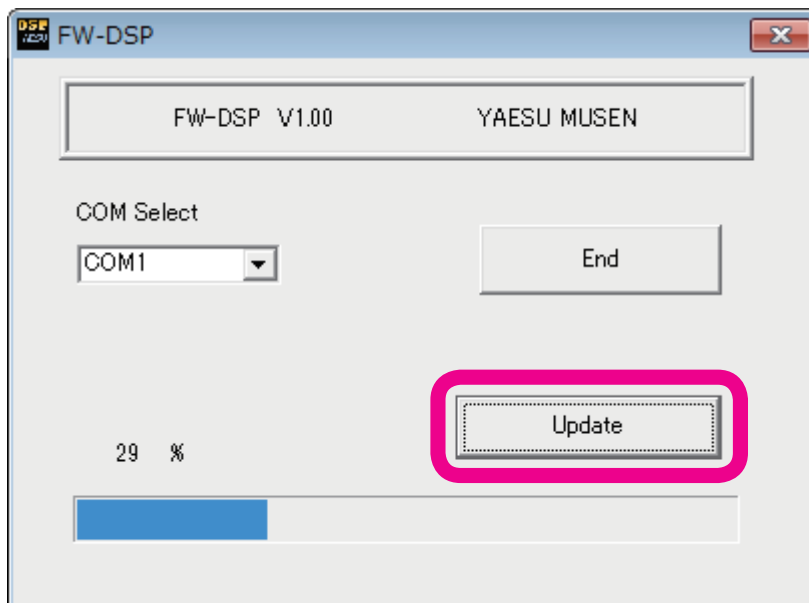


instructions on the Yaesu Website (<http://www.yaesu.com/>.)

Click the “Update” button on-screen, select the firmware to be transferred (dat file), and click the “Open” button.

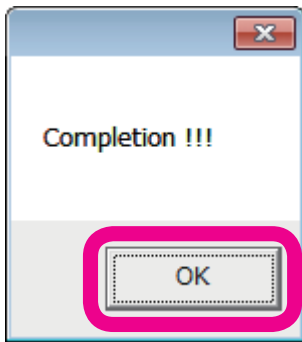
Please wait until the process has been completed.

When the progress bar is full, and “Completion!” is displayed on the screen, the update has been



completed.

5. Click the “OK” button displayed on-screen.
6. Press and hold the [POWER] key on the transceiver main panel, to turn the transceiver ON.



7. Click the “End” button on the transfer software screen.
8. Disconnect the RS-232C cable or the USB cable connecting the transceiver to the personal computer. This completes the firmware update process.

If there is a problem during the update process, disconnect the DC cable from the transceiver, and turn OFF the external power supply; then close the FW-DSP transfer software, and try again.

## **How to Update the TFT Firmware**

---

**Preparation:** Download the **TFW** transfer software and **TFT\_V01-\*\*.bin** firmware to the same folder, and Unzip the downloaded zip file.

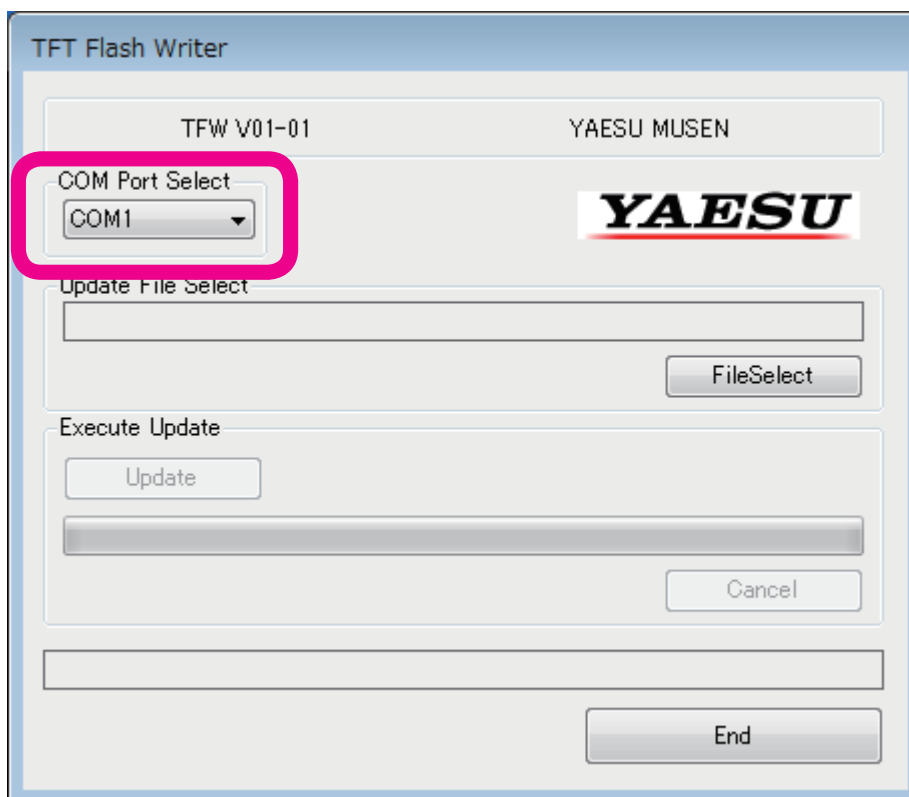
※ To update the TFT Firmware on your FT<sub>DX</sub>1200, you must first install "Microsoft .NET Framework 3.5" onto the personal computer before beginning the firmware upgrade process.

**The example below is for Windows® 7.**

1. Confirm that the radio is turned OFF then disconnect DC cable and all other cables from the transceiver.
2. Connect the transceiver CAT terminal and the personal computer COM port with an RS-232C straight cable.  
(No driver installation is required when connecting via an RS-232C cable.)  
Alternatively, connect the transceiver CAT terminal and the personal computer USB port via the **SCU-17** and supplied connection cables.  
(The **SCU-17** virtual COM port driver must be installed in advance.)
3. Connect the DC cable to the transceiver, and turn the external power supply ON.  
Press and hold the [**NOTCH**] + [**CONT/APF**] keys while pressing the [**POWER**] key on the transceiver main panel, turning the transceiver ON.  
The transceiver LED indicator will appear as below, and the unit will switch to TFT write mode.
4. Execute the TFW.exe transfer software.  
On the TFW COM Port Select screen, set the COM port number.



The COM port number may vary from computer to computer.

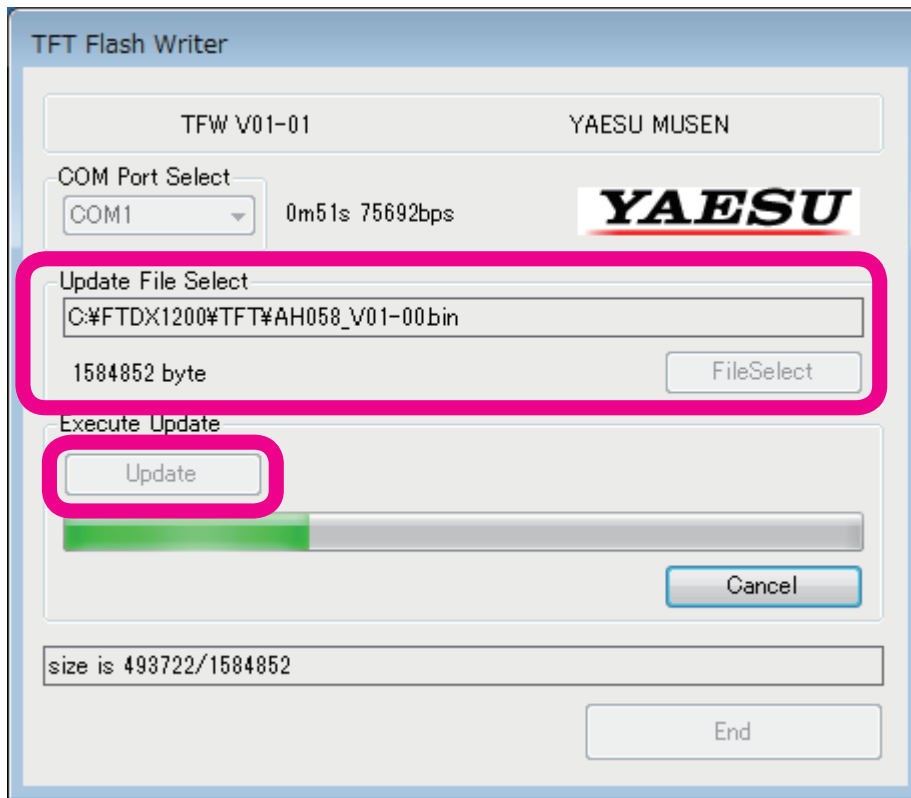


(Use an "Enhanced COM port" when using a USB cable. Please see the **SCU-17** Virtual COM Port Driver instructions on the Yaesu Website (<http://www.yaesu.com/>.)

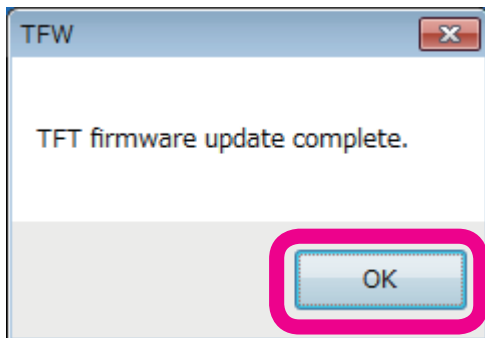
Click the "File Select" button, select the firmware to be transferred (bin file), and click the "Open" button. Click the "Update" button. The firmware transfer process will begin.



Please wait until the process has been completed.



“TFT firmware complete” will be displayed on-screen, as shown below. Click the “OK” button.



6. Press and hold the **[POWER]** key to turn the transceiver OFF.
7. Click the “End” button on the transfer software screen.
8. Disconnect the RS-232C cable or the USB cable connecting the transceiver to the personal computer. This completes the firmware upgrading process.

If there is a problem during the upgrading process, disconnect the DC cable from the transceiver, and turn off the external power supply; then close the TFW transfer software, and try again.

## How to Update the FFT Firmware

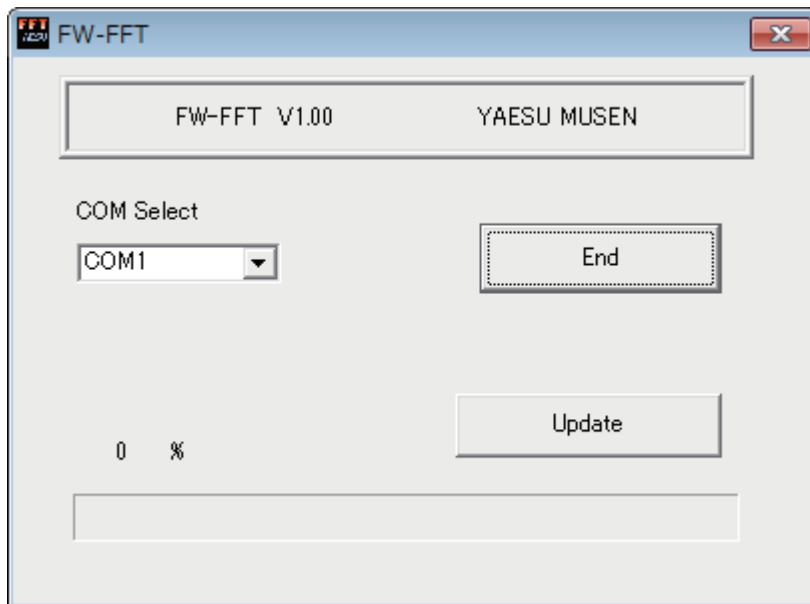
**Preparation:** Download the **FW-FFT** transfer software and **AH058Hfft\_V\*\*\*\*.dat** firmware to the same folder, and Unzip the downloaded zip file.

The example below is for **Windows® 7**.

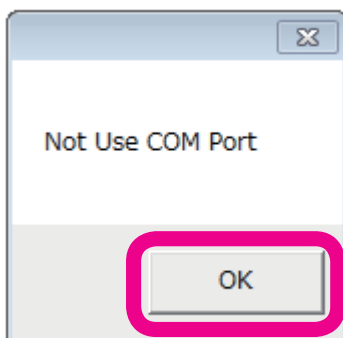
1. Confirm that the radio is turned OFF then disconnect the DC cable and all other cables from the transceiver.
2. Connect the transceiver CAT terminal and the personal computer COM port with an RS-232C straight cable.  
(No driver installation is required when connecting via an RS-232C cable.)  
Alternatively, connect the transceiver unit CAT terminal and personal computer USB port via the **SCU-17** and supplied connection cables.  
(The **SCU-17** virtual COM port driver must be installed in advance.)
3. Connect the DC cable to the transceiver, and turn the external power supply ON.  
Press and hold the **[BK-IN]** + **[MONI]** keys while pressing the **[POWER]** key on the transceiver main panel, turning on the transceiver's power.  
The transceiver LED indicator will appear as below, and the unit will switch to FFT write mode.



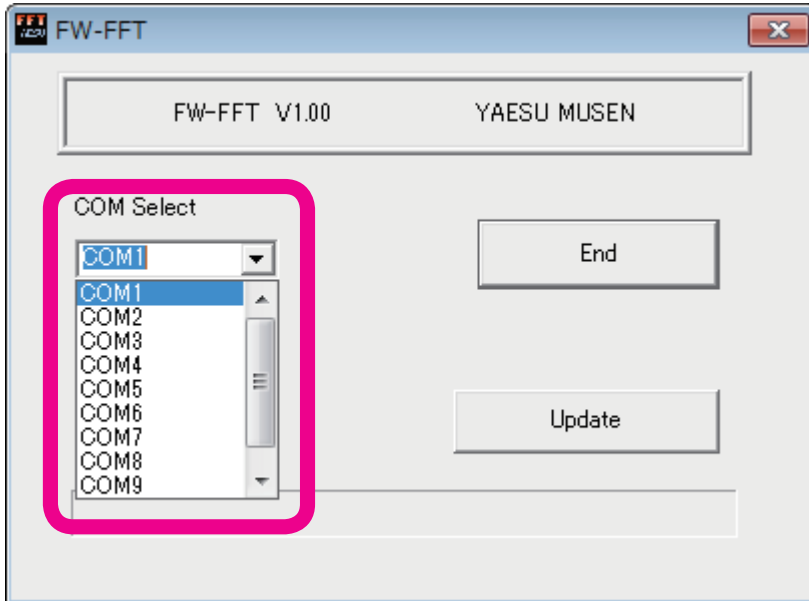
4. Execute the FW-FFT.exe transfer software.



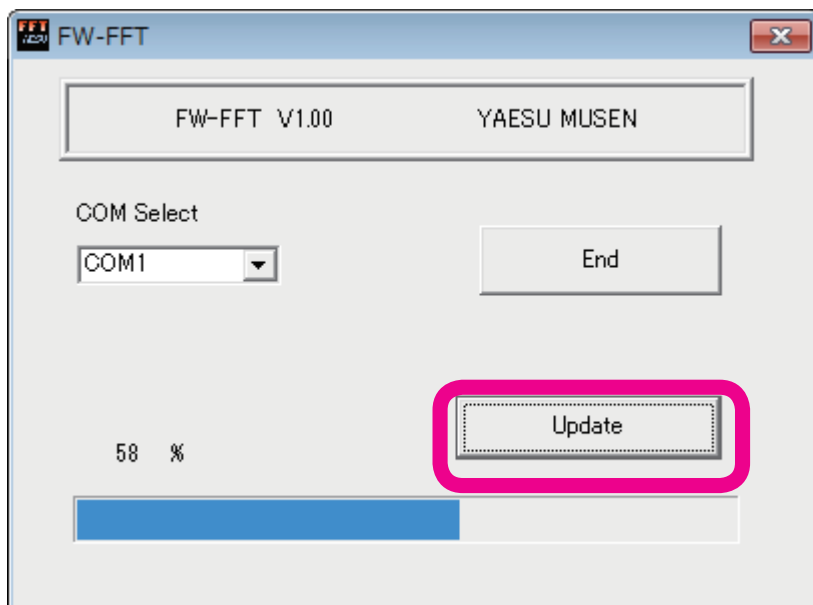
When the following screen appears, click the "OK" button.



On the FW-DSP COM Select screen, set the COM port number.

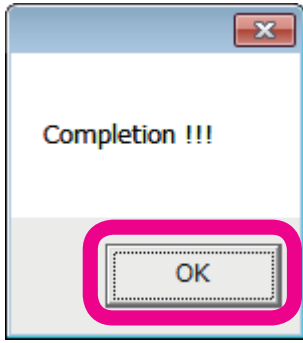


The COM port number may vary from computer to computer. (Use an "Enhanced COM port" when using a USB cable. Please see the SCU-17 Virtual COM Port Driver instructions on the Yaesu Website (<http://www.yaesu.com/>.) Click the "Update" button on-screen, select the firmware to be transferred (dat file), and click the "Open" button. The firmware transfer process will begin.



Please wait until the process has been completed.

When the progress bar is full, and “Completion!” is displayed on screen, the update has been completed.



5. Click the “OK” button displayed on-screen.
6. Press and hold the [**POWER**] key on the transceiver main panel, turning ON the transceiver power.
7. Click the “End” button on the transfer software screen.
9. Disconnect the RS-232C cable or the USB cable connecting the transceiver to the personal computer.  
This completes the firmware update process.

If there is a problem during the update process, disconnect the DC cable from the transceiver, and turn the external power supply OFF; then close the **FW-FFT** transfer software, and try again.