

# SSD2go User Manual

SSD2go

SSD2go pocket

SSD2go PRO

SSD2go TWIN



Angelbird

## TABLE OF CONTENTS

|                                   |           |                                    |           |
|-----------------------------------|-----------|------------------------------------|-----------|
| <b>Introduction</b>               | <b>3</b>  | <b>Getting help</b>                | <b>17</b> |
| Package contents                  | 3         |                                    |           |
| System requirements               | 4         | <b>Troubleshooting</b>             | <b>18</b> |
| Support                           | 4         | The SSD2go does not mount          | 18        |
|                                   |           | The SSD2go does not work on my TV  | 18        |
| <b>Quickstart</b>                 | <b>5</b>  | The SSD2go does not work in my car | 18        |
|                                   |           | Choosing a file system             | 18        |
| <b>Safely removing the SSD2go</b> | <b>6</b>  | Opening Disk Management            | 19        |
| Safely removing in Windows        | 6         |                                    |           |
| Safely removing in Mac OS X       | 7         | <b>Legal Information</b>           | <b>19</b> |
|                                   |           | Copyright                          | 19        |
| <b>Installation</b>               | <b>8</b>  | Acknowledgments                    | 19        |
| Installation on Mac OS X          | 8         |                                    |           |
| Installation on Windows           | 8         |                                    |           |
| Installation on Linux             | 9         |                                    |           |
|                                   |           |                                    |           |
| <b>Configuring the SSD2go</b>     | <b>9</b>  |                                    |           |
| Configuring for FAT32             | 10        |                                    |           |
| Configuring on Windows            | 10        |                                    |           |
| Configuring on Mac OS X           | 13        |                                    |           |
|                                   |           |                                    |           |
| <b>Technical Specifications</b>   | <b>14</b> |                                    |           |
| SSD2go                            | 14        |                                    |           |
| SSD2go pocket                     | 15        |                                    |           |
| SSD2go PRO                        | 16        |                                    |           |
| SSD2go TWIN                       | 17        |                                    |           |

## INTRODUCTION

Welcome to the user manual for your **SSD2go**. With stunning real word transfer speeds of up to 460MB/s and 85000 IOPS it will change your mobile workflow <sup>1</sup>.

The **SSD2go** and **SSD2go pocket** are fully compliant with USB 3.0 and backwards compatible up to USB 1.1, making sure you can use it anywhere.

The **SSD2go TWIN** features two SSD drives in one compact package.

Furthermore, The **SSD2go PRO** is eSATA compatible, giving you full SATA3 6Gbit/s performance.

This manual will guide you through using and configuring your the **SSD2go**.

Your **SSD2go** comes out of the box ready to use. Follow the [Quickstart](#) instructions and you are ready to go.

### Note:

*You can get the up-to-date version of this manual at: [www.angelbird.com/downloads](http://www.angelbird.com/downloads)*

### Note:

*You can sign up on the [Angelbird support portal](#) to receive product updates: [www.angelbird.com/support](http://www.angelbird.com/support)*

## PACKAGE CONTENTS

3

### SSD2go

- **SSD2go**
- 32 cm USB 3.0 cable

### SSD2go pocket

- **SSD2go pocket**
- 32 cm USB 3.0 cable

### SSD2go PRO

- **SSD2go PRO**
- 32 cm USB 3.0 cable
- 60 cm eSATAp cable

### SSD2go TWIN

- **SSD2go TWIN**
- 2 × 32 cm USB 3.0 cable

### Note:

*Please keep the packaging. In the unlikely event that you have to return the product for servicing or repair it must be returned in the original packaging.*

<sup>1</sup> Different models may have difference performance. See the [Technical Specifications](#) section for details.

## SYSTEM REQUIREMENTS

Your computer must meet certain requirements in order to have your **SSD2go** function correctly.

### Minimum requirements

For the **SSD2go** and **SSD2go pocket** you need one free USB port.

To be able to use both drives of the **SSD2go TWIN**, you need two USB ports.

To make use of the eSATA functionality of the **SSD2go PRO**, you need one free eSATA (for data transfer) and a USB port (for power).

### Optimal performance

Although not required, for optimal performance your computer must be equipped with USB 3.0 ports which support UASP. Consult your computer manual to see if your USB 3.0 ports support UASP.

In addition you need at least Window 8, Windows 7 (with UASP drivers), Mac OS X 10.8 or later, or any recent Linux distribution.

For optimal performance with the **SSD2go PRO** you need an eSATA 6Gb/s port. Consult your computer manual to see if your eSATA ports support SATA 6Gb/s.

## SUPPORT

For support visit the Angelbird Support website at [www.angelbird.com/support](http://www.angelbird.com/support), or check the [Getting help](#) section.

By signing up for your Personal Support Portal account, you will receive product updates automatically.

You can download an up-to-date version of this manual at [www.angelbird.com/downloads](http://www.angelbird.com/downloads).

## QUICKSTART

Your **SSD2go** comes ready to use and configured for most situations.

Please refer to the next two sections on how to start using your **SSD2go** with a laptop or computer, or with a hi-fi set or TV.

### Note:

*If you are using Windows XP, Windows Server 2003 or Linux, you need to install the exFAT driver first. Follow the instructions in the [Installation](#) section. Once the driver is installed, follow the steps below.*



fig. 1

## QUICKSTART WITH A LAPTOP OR COMPUTER

Your **SSD2go** comes ready to use for Windows Vista, Windows 7, Windows 8, Windows Server 2008 and Mac OS X 10.6.5 and later.

1. Connect the **SSD2go** with the USB cable to your computer like in [fig. 1](#).
2. The drive will mount and show up in your File Manager.
3. Before you unplug the **SSD2go**, you must first safely remove it from your operating system. See the next chapter, for more information.

Failure to safely remove your **SSD2go** may result in lost or damaged files.

### Note:

*If the **SSD2go** does not mount on your computer, check the [The SSD2go does not mount](#) section for help.*

### Warning!

*Failure to safely remove the **SSD2go** could result in missing or damaged files.*

## QUICKSTART WITH A STEREO OR TV

5

### Note:

*Only the **SSD2go** pocket is suitable for use with hi-fi sets and TVs.*

On many modern TVs and hi-fi equipment your **SSD2go** pocket will work directly. Just transfer your music, movies or pictures to the **SSD2go** pocket and plug it in. Consult your TV or hi-fi equipment manual for full instructions.

### Note:

*The **SSD2go** pocket comes preconfigured to be compatible with most devices. When your device does not work directly, in most cases it requires configuring the **SSD2go** pocket with a [FAT32](#) partition. Please refer to the section [Configuring for FAT32](#) for detailed instructions.*

## SAFELY REMOVING THE SSD2go

Before you unplug the **SSD2go** from a USB port you must first safely remove it, which means instructing your computer to finish and stop writing to the drive. If you do not do this, you could lose data.

In the case of the **SSD2go** TWIN, you need to safely remove both drives.

If you connected your **SSD2go** PRO with the eSATAp cable, you need to turn off your laptop or computer before unplugging it.

## SAFELY REMOVING IN WINDOWS

### Windows 8, Windows 7 and Windows Vista

To unmount the **SSD2go**, single-click the eject button in the system tray.

As shown in [fig. 2](#) a list of devices which can be unmounted will appear. Click “Eject SSD2go”.

You can safely unplug when the message from [fig. 3](#) appears.

### Windows XP

To unmount the **SSD2go**, single-click the eject button in the system tray.

As shown in [fig. 4](#) a list of devices which can be unmounted will appear. Click “Safely remove USB Mass Storage Device”.

You can safely unplug when the message from [fig. 5](#) appears.

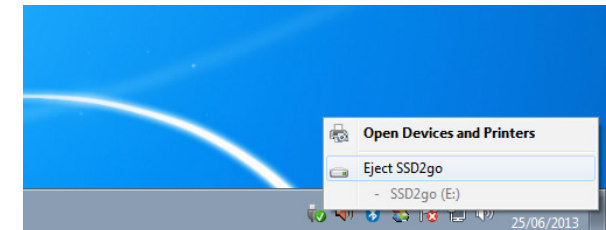


fig. 2

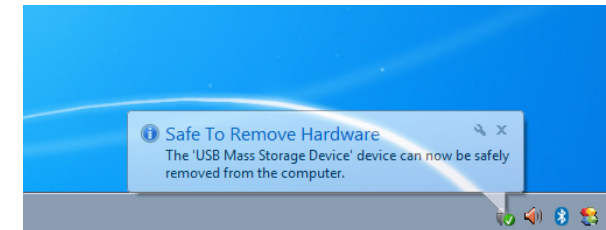


fig. 3



fig. 4

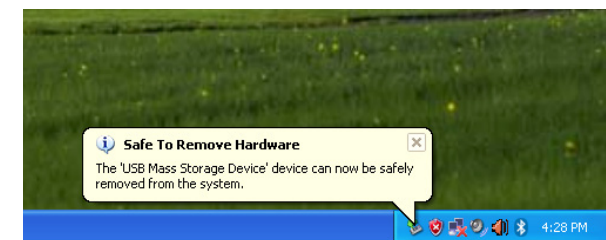
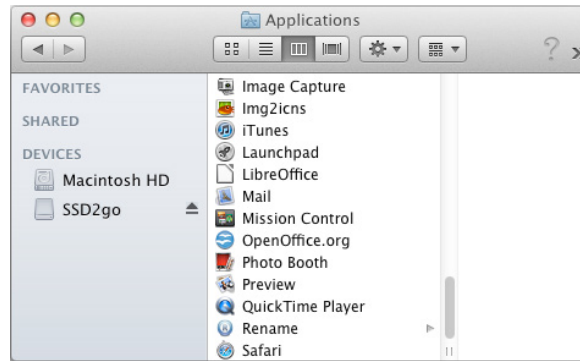


fig. 5

## SAFELY REMOVING IN MAC OS X

To unmount the **SSD2go** using the Finder, click the eject button next to the drive icon as shown in *fig. 6*.

When the drive completely disappears you can safely unplug the device.



*fig. 6*

## INSTALLATION

In some situations it is necessary or recommended to install a driver for your **SSD2go**.

When you use Mac OS X it is recommended, but not required, to install the **SSD2go** driver. This driver adds TRIM and SMART support and will improve the performance of your device. Please see the next section, [Installation on Mac OS X](#), for instructions.

If you use Windows XP, Windows Server 2003 or Linux you need to install the *exFAT* driver. Please refer to the sections [Installation on Windows](#) and [Installation on Linux](#) for detailed instructions.

## INSTALLATION ON MAC OS X

Angelbird recommends that you install the **SSD2go** driver. It will improve the long-term performance of your device.

The Mac OS X driver for the **SSD2go** comes preloaded on your device. You can also download the driver from the [Angelbird website](#).

To install the driver, open the installation package for the Mac OS X version you are using, and run the installation program. Follow the instructions on your screen and the driver will be installed.

## INSTALLATION ON WINDOWS

**Note:**

*This section only applies to Windows XP and Windows Server 2003.*

Please visit <http://support.microsoft.com/kb/955704> and download the exFAT driver installation package for your Windows version.

Once you have downloaded the installation package, start it and follow the instruction on your screen to install the exFAT driver.

## INSTALLATION ON LINUX

Most Linux distributions do not have the exFAT driver pre-installed. In this section we show how to install the exFAT driver on Ubuntu and Debian based systems.

1. Open a terminal. In Ubuntu you can use the Unity start button or press the key combination `ctrl+alt+t`.
2. Install the driver packages by giving the command `sudo apt-get install exfat-fuse exfat-utils` and following the instructions on your screen.
3. Reboot your computer.  
After this, you are ready to use the **SSD2go**.

## CONFIGURING THE SSD2GO

### Note:

*The SSD2go already comes preconfigured out of the box, so usually there is no need to configure your SSD2go.*

The **SSD2go** is configured by partitioning and formatting the drive. You may want to do this if the default configuration does not suit your needs. For example, some TVs and audio equipment require FAT32 formatting.

There are separate instructions for [Windows](#) and [Mac OS X](#).

The default configuration for the **SSD2go** is the MBR partition table and a single exFAT partition. The sections below explain how to configure your **SSD2go** with these settings.

If you want a different configuration than explained here, check your operating system manual or check the links in the [Getting Help](#) section.

### Warning!

*Partitioning and formatting are both operations that will delete the data on the SSD2go! Be sure to make a backup of your data before continuing.*

## CONFIGURING FOR FAT32

Configuring your **SSD2go** for FAT32 is sometimes required for it to be compatible with a TV or hi-fi equipment.

The next two sections show how to configure a **SSD2go** on a Windows and Mac computer.

If you are using a Windows computer, please follow the instructions in the section [Configuring on Windows](#), and at step 3.B, select the *FAT32* option instead of the *exFAT* option.

If you are using a Mac computer, please follow the instructions in section [Configuring on Mac OS X](#). At step 3, select the *MS-DOS (FAT)* option instead of *exFAT*.

## CONFIGURING ON WINDOWS

The Disk Management application is used to partition and format drives. We can open it by pressing the key combination **Win+R**. This will show the “Run” dialog. Type `diskmgmt.msc` and press Enter.

### Note

*Alternative ways of opening the Disk Management application are shown in the [Opening Disk Management](#) section.*

Partitioning a disk means the creating of separate volumes (drive letters, mount points) on a single physical disk. We will create only a single volume on the disk.

1. First we need to find the **SSD2go**. The window is divided into two parts, as shown in [fig. 7](#). On top is a list of volumes and on the bottom a list of physical disks. In the list of physical disks, locate the **SSD2go**.

The **SSD2go** should be the physical disk on the bottom of the list, but above any CD-ROM drive.

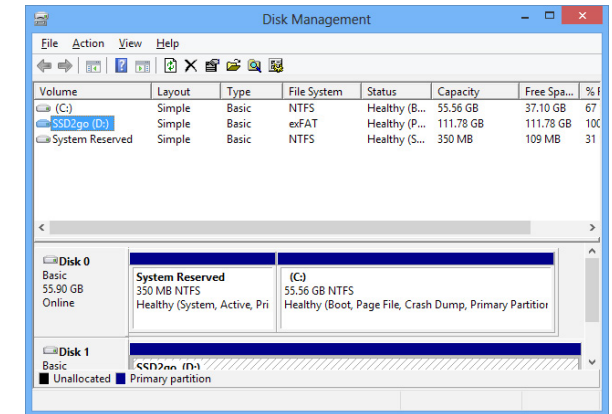


fig. 7

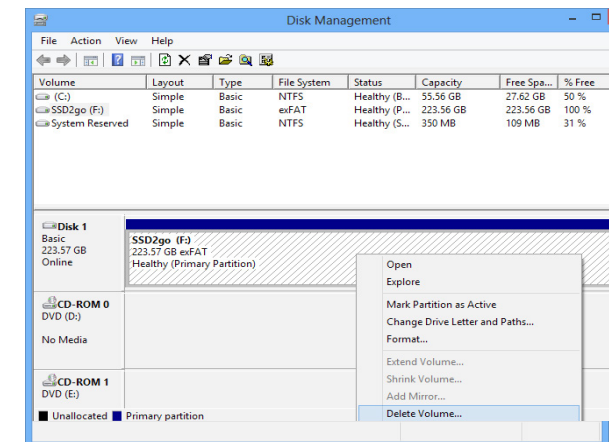


fig. 8

## Note

*If you cannot find the physical disk representing the SSD2go, disconnect it, wait a few seconds, and reconnect it. You will see the SSD2go disk disappear and appear.*

2. If there are any volumes on the **SSD2go**, you need to remove them first. Make sure you only delete the volumes on the **SSD2go**, not any other disks.

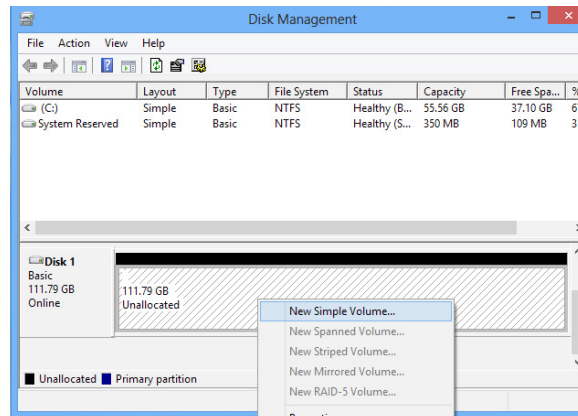


fig. 9

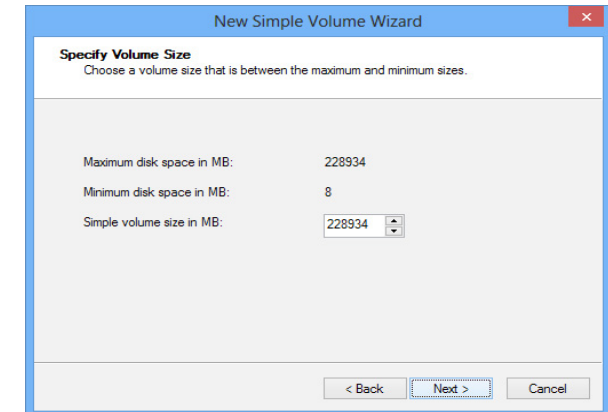


fig. 10

## Warning!

*Deleting a volume will also delete all data from that volume!*

Right-click on the volume you wish to remove, and click "Delete Volume", as shown in [fig. 8](#). Repeat this for all volumes on the **SSD2go**.

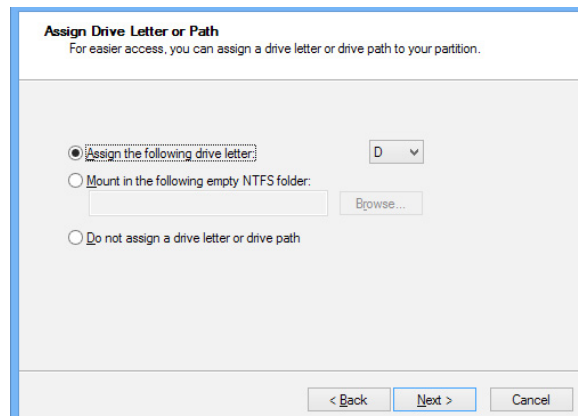


fig. 11

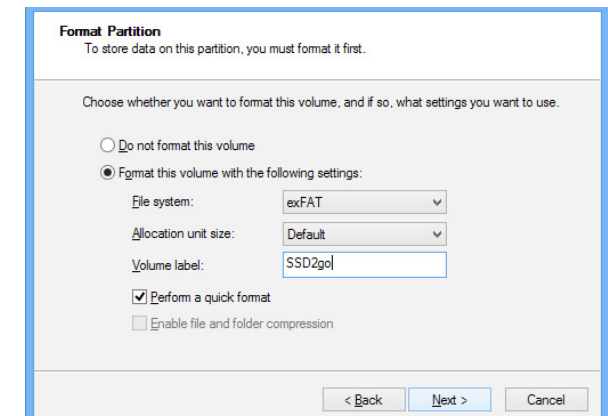


fig. 12

3. Now we will create a new volume on the **SSD2go**. In the “Unallocated” area, right-click and choose “New Simple Volume” as shown in [fig. 9](#). Windows will now guide you through the process of creating a new volume.

3.A. Click “Next” twice to accept the default volume size and then the default drive letter. See [fig. 10](#) and [fig. 11](#).

3.B. On the “Format Volume” screen ([fig. 12](#)), you need to select the filesystem.

Set the filesystem to *exFAT* if you want to use your **SSD2go** with both Windows and Mac OS X. Choose *NTFS* if you want to use your **SSD2go** only with Windows. Choose *FAT32* if you want to use your **SSD2go** with a TV or hi-fi set, and *exFAT* does not work. Read [Choosing a file system](#) for an explanation of other options.

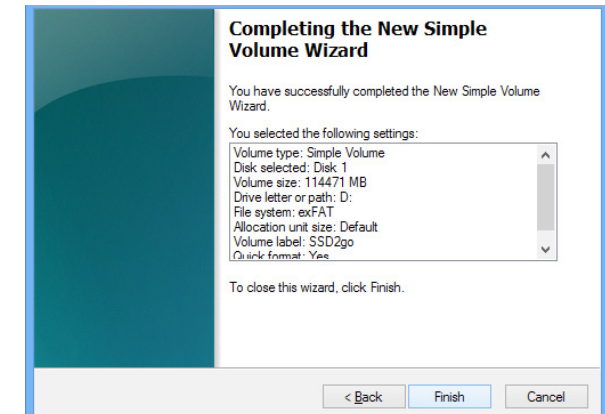
Also set the volume name to “SSD2go” and enable “Perform a quick format”.

When ready, click next.

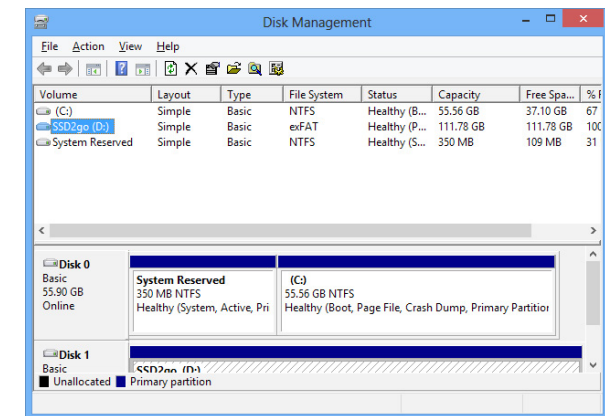
3.C. Click finish to confirm you want to create the volume as in [fig. 13](#).

3.D. Windows will now create the volume, and it will show up in the list of volumes as in [fig. 14](#).

Now the volume has been created. The drive will mount and show up in “Computer” (Windows 8, Windows 7, Windows Vista) or “My Computer” (Windows XP).



[fig. 13](#)



[fig. 14](#)

The Disk Utility is used to format and partition drives. It can be found under *Applications → Utilities → Disk Utility*.

Partitioning a disk means the creating of separate volumes on a single physical disk. We will create only a single volume on the disk.

Start the Disk Utility and follow the steps below.

1. Select **SSD2go** from the list of disks, and then select the *partition* tab, and set the Partition Layout to 1 Partition as in [fig. 15](#).
2. Click on *options...* and change the partition scheme to *Master Boot Record* as in [fig. 16](#).
3. Change the *Name* to "SSD2go". For the *Format* Choose *exFAT* if you want to use your **SSD2go** with both Windows and Mac OS X. For the other formats, read the [Choosing a file system](#) section.

4. Click "Apply" and then "Partition" when you have made a choice ([fig. 17](#)). The partition will now be created and mounted.

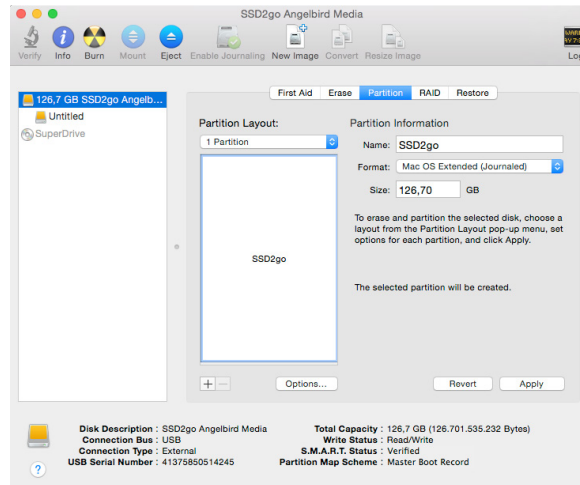


fig. 15

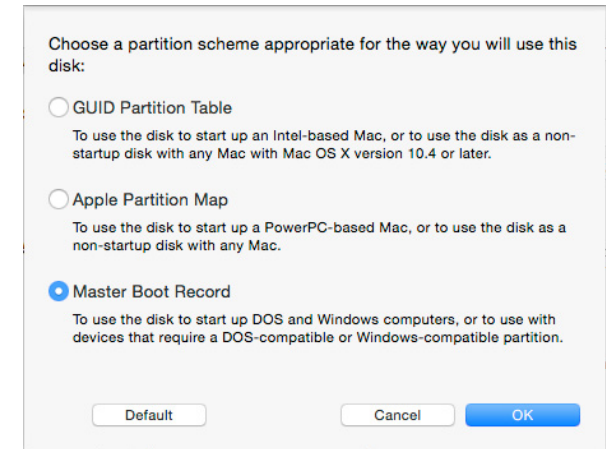


fig. 16

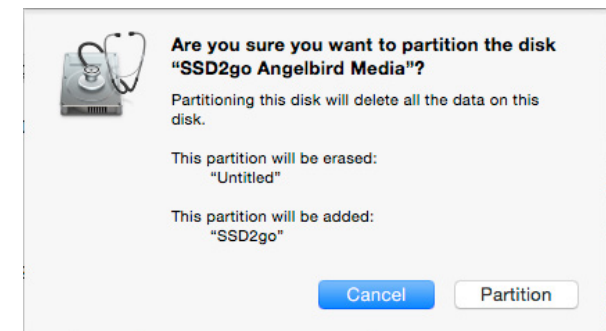


fig. 17

**Warning!**  
*After clicking "Apply" all files on the SSD2go will be deleted!*

## TECHNICAL SPECIFICATIONS

### SSD2go

#### Type

Portable USB SSD drive

#### Connectivity

Full size USB 3.0 5Gbit/s (x2 for Twin)

#### Warranty

3 Years

#### Target User

Consumer, power user from home, gaming to business

#### Standard Capacity

128, 256, 512 GB

#### Operating temperature (load)

30°C to 35°C

#### Size

127mm x 66mm x 10mm  
(5.0" x 2.59" x 0.39")

#### Features

In-drive UPS, Overload protection, TCG OPAL  
Auto-TRIM, ECC, RAISE, EMS protection  
Built-in cache, SMART<sup>1</sup>

#### Flash

Grade A Intel® or Micron® Synchronous MLC

#### Controller

SandForce® SF-2281/2282 Series

#### Sustained Read speed

Up to 460MB/s

#### Sustained Write speed

Up to 460MB/s

#### IOPS

85000

#### Access Time

< 0.1ms

#### MTBF

> 2,000,000 hours

<sup>1</sup> SMART support on OS X requires a driver.

## TECHNICAL SPECIFICATIONS

### SSD2go pocket

#### Type

Ultra portable USB SSD drive

#### Connectivity

Full size USB 3.0 5Gbit/s

#### Warranty

5 Years limited warranty

#### Target User

Consumer, power user from home, gaming to business

#### Available Colors

Silver, Blue, Red, Black

#### Capacity

128, 256, 512 GB

#### Operating temperature

-20°C ~ +70°C

#### Dimensions

89.0 × 69.9 × 10.4mm  
(3.5 × 2.75 × 0.41 inch)

#### Features

Overload protection, TRIM<sup>1</sup>, ECC,  
EMS protection, SMART<sup>1</sup>

#### Flash

Synchronous MLC

#### Sustained Read speed <sup>2</sup>

|        |                |
|--------|----------------|
| 512 GB | Up to 450 MB/s |
| 256 GB | Up to 450 MB/s |
| 128 GB | Up to 450 MB/s |

#### Sustained Write speed <sup>2</sup>

|        |                |
|--------|----------------|
| 512 GB | Up to 367 MB/s |
| 256 GB | Up to 303 MB/s |
| 128 GB | Up to 152 MB/s |

#### IOPS <sup>3</sup>

|        |             |
|--------|-------------|
| 512 GB | Up to 33800 |
| 256 GB | Up to 31000 |
| 128 GB | Up to 31000 |

<sup>1</sup> TRIM and SMART support on OS X requires a driver.

<sup>2</sup> Tested with ATTO Benchmark Tool v2.46.

<sup>3</sup> Disk aligned / 4KB random write / QD 30.

#### Access Time

~ 0.9ms

#### MTBF

> 2.000.000 hours

### SSD2go PRO

#### Type

Portable USB SSD drive

#### Connectivity

Full size USB 3.0 5Gbit/s  
eSATA SATA3 6Gbit/s

#### Warranty

3 Years

#### Target User

Consumer, power user from home, gaming to business

#### Standard Capacity

320 or 640 GB

#### Operating temperature (load)

30°C to 35°C

#### Size

127mm x 66mm x 20mm  
(5.0" x 2.59" x 0.79")

#### Features

In-drive UPS, Overload protection, TCG OPAL TRIM<sup>1</sup>, ECC, RAISE, EMS protection  
Built-in cache, SMART<sup>1</sup>

#### Flash

Grade A Intel® or Micron® Synchronous MLC

#### Controller

SandForce® SF-2281/2282 Series

#### Sustained Read speed (USB 3.0 / eSATA) <sup>2</sup>

Up to 460MB/s / 530MB/s

#### Sustained Write speed (USB 3.0 / eSATA) <sup>2</sup>

Up to 460MB/s / 460MB/s

#### IOPS (USB 3.0 / eSATA) <sup>2</sup>

55000 / 70000

#### Access Time

~ 0.6ms

#### MTBF

> 2,000,000 hours

<sup>1</sup> TRIM and SMART support on OS X requires a driver.

<sup>2</sup> Tested with the 640 GB model.

## TECHNICAL SPECIFICATIONS

### SSD2go TWIN

#### Type

Portable USB SSD drive

#### Connectivity

Two times full size USB 3.0 5Gbit/s

#### Warranty

3 Years

#### Target User

Consumer, power user from home, gaming to business

#### Standard Capacity

Any combination of 128, 256 or 512 GB drives

#### Operating temperature (load)

30°C to 35°C

#### Size

127mm x 66mm x 20mm  
(5.0" x 2.59" x 0.79")

#### Features

In-drive UPS, Overload protection, TCG OPAL Auto-TRIM, ECC, RAISE, EMS protection  
Built-in cache, SMART<sup>1</sup>

#### Flash

Grade A Intel® or Micron® Synchronous MLC

#### Controller

SandForce® SF-2281/2282 Series

#### Sustained Read speed <sup>2</sup>

Up to 460MB/s

#### Sustained Write speed <sup>2</sup>

Up to 460MB/s

#### IOPS <sup>2</sup>

85000

#### Access Time

< 0.1ms

#### MTBF

> 2,000,000 hours

<sup>1</sup> SMART support on OS X requires a driver.

<sup>2</sup> Tested with the 512 GB model.

## GETTING HELP

For general information regarding partitioning, see [http://en.wikipedia.org/wiki/Disk\\_partitioning](http://en.wikipedia.org/wiki/Disk_partitioning).

For more information on formatting and partitioning in various operating systems you can read the resources below.

#### Windows

<http://windows.microsoft.com/en-US/windows-vista/Create-and-format-a-hard-disk-partition>

#### Mac OS X

Open *Disk Utility* and choose *Help* → *Disk Utility Help*.

#### Ubuntu Linux

<https://help.ubuntu.com/community/Howto-Partition>

For other help, check the Angelbird Support section at [www.angelbird.com/support](http://www.angelbird.com/support).

### THE *SSD2go* DOES NOT MOUNT

If you are using Windows XP, Windows Server 2003 or Linux you first need to install the exFAT driver.

You can read the installation instructions in the [Installation](#) section.

### THE *SSD2go* DOES NOT WORK ON MY TV

Not all TVs, cars, hi-fi equipment, etc, support the default exFAT formatting. Please format your *SSD2go* as FAT32 and try again.

You can read detailed instructions in the section [Configuring the \*SSD2go\*](#).

### THE *SSD2go* DOES NOT WORK IN MY CAR

Please check the section [The \*SSD2go\* does not work on my TV](#).

### CHOOSING A FILE SYSTEM

A file system / format is the way a computer stores files on a disk. Different file systems have different advantages and disadvantages. Mac OS X, Windows and Linux have support for a number of different file systems.

The *SSD2go* comes preconfigured with *exFAT*. Angelbird recommends *exFAT* since it works with most modern computers and devices.

Use the information below to choose the best file system for you.

#### *exFAT*<sup>1,2</sup>

Windows 8 / Windows 7 / Windows Vista / Windows Server 2008 / Mac OS X 10.6.5 and later

#### *FAT32*<sup>3,4</sup>

All Windows version / Mac OS X / Mac OS 9 / Linux. Most TVs and hi-fi sets.

#### **Note:**

*FAT32 has a file size limit.*

*The largest a file can be is 4 Gigabyte.*

#### *NTFS*<sup>5</sup>

All Windows versions

#### *Mac OS Extended*<sup>6</sup>

All OS X versions / Linux.

#### *EXT4*<sup>7</sup>

Linux

<sup>1</sup> Windows XP, Windows Server 2003 supported with the Microsoft exFAT driver.

<sup>2</sup> Linux supported with the 3rd party exFAT driver.

<sup>3</sup> With FAT32 the maximum file size is 4 Gigabyte.

<sup>4</sup> Called "MS-DOS (FAT)" in the Mac OS disk utility.

<sup>5</sup> Mac OS X, Linux supported with the 3rd party NTFS-3G driver.

<sup>6</sup> Windows supported with the 3rd party Boot Camp IFS driver.

<sup>7</sup> Mac OS X supported with the 3rd party Paragon ExtFS driver.

## OPENING DISK MANAGEMENT

Depending on the version of Windows, opening the Disk Management application may work differently. Below we give some options to open this application.

### Windows 8

- Press the key combination **Win+X**, and click on “Disk Management”.
- Start a search in the “Settings” category for “Format”, and click “Create and Format hard disk partitions.”

### Windows 7, Windows Vista

- Open the start menu. In the search field, type “Format”. Click “Create and Format hard disk partitions.”

### All Windows versions

- Right-click on “Computer”, choose “Manage”, then select “Disk Management” under “Storage” in the list of categories on the left.
- Press **Win+R** to open the run dialog. Type `diskmgmt.msc` and press Enter.

## LEGAL INFORMATION

### COPYRIGHT

Copyright © 2013 - 2015 Angelbird Technologies GmbH. All rights reserved.

### ACKNOWLEDGMENTS

SSD2go® is a registered trademark of Angelbird Technologies GmbH in the U.S. and other countries.

Windows® is a registered trademark of Microsoft Corporation in the U.S. and other countries.

Apple®, Mac® and OS X® are registered trademarks of Apple Inc. in the U.S. and other countries.

Linux® is a registered trademark of Linus Torvalds in the U.S. and other countries.

Intel® is a registered trademark of Intel Corporation in the U.S. and/or other countries.

Micron® is a registered trademark of Micron Technology, Inc.

SandForce® is a registered trademark of LSI Corporation in the U.S. and/or other countries.

Android™ is a trademark of Google Inc.

Millennium Park 6  
6890 Lustenau  
Austria  
Tel: +43 5577 21515  
Fax: +43 5577 21515 99  
Email: [info@angelbird.com](mailto:info@angelbird.com)  
VAT No. ATU66365211

[www.angelbird.com](http://www.angelbird.com)

For support, please visit  
[www.angelbird.com/support](http://www.angelbird.com/support)