

TURBO KITS

Metra's Turbo Kits are manufactured of OEM-quality ABS plastic and designed with exacting tolerances. Each matches the factory dash contours perfectly - with no gaps between the dash and the kit. From basic to custom installs, perfection starts here.

99-3010S
Chevrolet Camaro 2010



EZ ORDER

TURBO KITS

99-5721
Ford Taurus SE 2010
(All excluding NAV equipped models)



LCD Display can also show SYNC text

Backlit Soft Touch Buttons

99-5823CH
Ford Mustang 2010
(All excluding NAV equipped models)



LCD Display

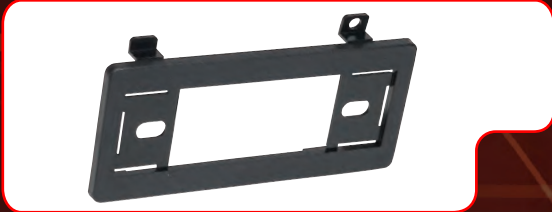
Backlit Soft Touch Buttons

EZ ORDER



CHRYSLER

For specific applications please refer to the application guide on pages 181-269
For DDIN reference guide see pages 99-100 • For Multi-kit guide see pages 101-104



- 99-1000 Chrysler Sebring
Dodge Avenger 1995-2000
Jeep Grand Cherokee 1993-1995**
- Quick conversion from 2-shaft to DIN
 - Includes alignment pins for fast, positive installation



- 99-6000 Chrysler • Plymouth • Dodge
Jeep • Eagle Multi-Kit 1974-2004**
- Includes add-on corner support components that eliminate any flexing or rocking of the kit that has been experienced with other kits on the market
 - Molded under-radio CD jewel case pocket



- 99-6229 Chrysler • Plymouth • Dodge
Jeep Multi-Kit 1974-2004**
- Quick conversion from 2-shaft to DIN
 - Includes easy-to-use instructions and necessary hardware
 - Specifically designed for Chrysler, Plymouth and Dodge vehicles



- 99-6500 Chrysler • Plymouth • Dodge • Jeep
Eagle • Ford • Lincoln • Mercury 1974-2004**
- Quick conversion from 2-shaft to DIN
 - Includes alignment pins for fast, positive installation in Chrysler, Plymouth and Dodge vehicles



- 99-6501 Chrysler • Plymouth • Dodge • Jeep
Eagle • Ford • Lincoln • Mercury 1974-2003**
- Includes recessed DIN opening with adjustable depth feature
 - Specially designed to ISO mount radios with ISO trim ring
 - Radio side support is provided by our patented "Side Arm Support System™"



- 99-6502 Chrysler Cirrus • Dodge Stratus
Plymouth Breeze 1996-2000
Sebring Convertible 1995-2000**
- Quick conversion from 2-shaft to DIN
 - Includes recessed DIN opening

TURBO KITS

N NEW **P** PAINTED **DD** DOUBLE DIN

FAX YOUR ORDER: 1.800.647.8091



CHRYSLER

For specific applications please refer to the application guide on pages 181-269
For DDIN reference guide see pages 99-100 • For Multi-kit guide see pages 101-104



99-6503 Jeep • Chrysler Plymouth • Dodge 1998-2009

- Special design accommodates DIN radios
- Bolts directly to factory radio mounting locations



99-6504 Jeep • Chrysler Plymouth • Dodge 1998-2009

- Specially designed for ISO mount radios
- Comes with under-radio CD jewel case pocket



99-6505 Chrysler • Jeep Dodge • Plymouth Multi-Kit 1998-2009

- Metra's patented Snap-In ISO Support System
- Recessed DIN mount
- ISO trim ring



99-6506 Chrysler Pacifica 2004-2008

- Holds either DIN or ISO DIN units
- Metra's patented Snap-In ISO Support System with ISO trim ring



99-6507 Chrysler • Dodge Jeep 2004-2010

- Metra's patented Snap-In ISO Support System
- Under radio pocket
- Recessed DIN mount
- ISO trim ring



99-6509 Dodge Sprinter 2003-2006

- High-grade ABS plastic - contoured and textured to compliment factory dash

N NEW **P** PAINTED **DD** DOUBLE DIN

CALL TO ORDER: 1.800.221.0932

CHRYSLER

For specific applications please refer to the application guide on pages 181-269
 For DDIN reference guide see pages 99-100 • For Multi-kit guide see pages 101-104



99-6510 Chrysler•Dodge Jeep 2007-2008

DD

- Designed specifically to replace Chrysler Navigation radios
- Metra's patented quick release, snap-in ISO mount system with a custom trim ring
- Includes parts for installation of double-DIN radios



99-6512 Dodge Sprinter 2007-2009

N

DD

- Metra's patented quick release, snap-in ISO mount system with a custom trim ring
- Recessed DIN opening
- Includes parts for installation of double-DIN radios



99-6511 Chrysler•Dodge Jeep 2007-2010

- Metra's patented quick release, snap-in, ISO mount system with a custom trim ring
- Recessed DIN opening



95-6511 Chrysler•Dodge Jeep 2007-2010

DD

- Designed specifically for DDIN radios



99-6540 Dodge Full-Size Van 1990-1997

- Professional Installer Series TurboKit offers quick conversion from 2-shaft to DIN



99-6700 Chrysler•Plymouth•Dodge•Ford Lincoln•Mercury•Jeep•Eagle 1974-2004

- Includes corner support components that eliminate the flexing or rocking of the kit that has been experienced with other kits on the market
- Radio side support is provided by our patented "Side Arm Support System™"

TURBO KITS

N NEW **P** PAINTED **DD** DOUBLE DIN

FAX YOUR ORDER: 1.800.647.8091



CHRYSLER/FORD

For specific applications please refer to the application guide on pages 181-269
For DDIN reference guide see pages 99-100 • For Multi-kit guide see pages 101-104



99-7000 Plymouth • Dodge • Eagle Mitsubishi Imports 1985-1996

- Allows pocket retention
- Includes snap-in center bar when replacing factory double-DIN radio
- Provision allows installation of 1/4- or 1/2-DIN equalizer - Includes EQ side supports



99-7006 Eagle Talon • Mitsubishi Eclipse 1995-1999

- Quick conversion from 2-shaft to DIN
- Allows installation of 1/4- or 1/2-DIN equalizer



88-00-9700 Universal EQ Pocket

- Fits all Metra Turbokits with EQ provision, except for 99-3103, 99-3900, 99-4501, 99-4502, 99-4544 and 99-4812



99-6500 Ford • Lincoln • Mercury 1974-2004

- Quick conversion from 2-shaft to DIN



98-5999 Ford Turbo Pocket

- Trim ring blends the pocket to the dash for a factory look
- Holds three CD jewel cases



86-5618 Ford Radio Removal Tool

N NEW **P** PAINTED **DD** DOUBLE DIN

CALL TO ORDER: 1.800.221.0932

FORD

For specific applications please refer to the application guide on pages 181-269
 For DDIN reference guide see pages 99-100 • For Multi-kit guide see pages 101-104



99-5000 Ford Thunderbird 2002-2005 Lincoln LS 1999-2006

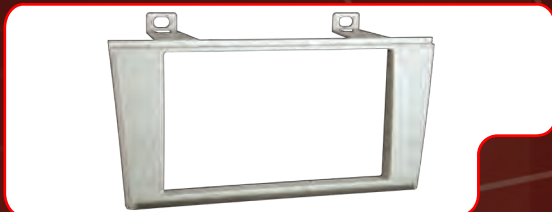
- Provides pocket with recessed mounting of a DIN radio or an ISO DIN radio using Metra's patented ISO quick-release brackets



95-5000B Ford Thunderbird 2002-2005 Lincoln LS 1999-2006

- Designed specifically for the installation of double-DIN radios
- Painted black to match the OEM finish

DD



95-5000S Ford Thunderbird 2002-2005 Lincoln LS 1999-2006

- Designed specifically for the installation of double-DIN radios
- Painted silver to match the OEM finish

DD



99-5025 Ford Mustang 1987-1993

- Professional Installer Series TurboKit offers quick conversion from 2-shaft to DIN
- Front-loading
- Allows installation of 1/4- or 1/2-DIN equalizer (side supports included)



95-5025 Ford Mustang 1987-1993

- Designed specifically for the installation of double-DIN radios

DD



99-5026 Ford Mustang 2001-2004 Ford Explorer 2002-2005 Ford Expedition 2003-2005 Lincoln Aviator 2003-2005 Lincoln Navigator 2003-2006 Mercury Mountaineer 2002-2005

- Provides pocket with recessed mounting of a DIN radio or ISO DIN radio

TURBO KITS

N NEW **P** PAINTED **DD** DOUBLE DIN

FAX YOUR ORDER: 1.800.647.8091

FORD

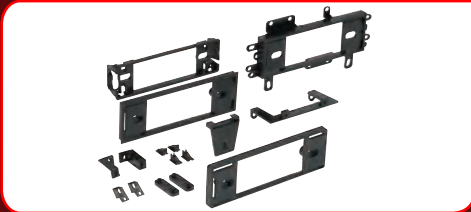
For specific applications please refer to the application guide on pages 181-269
 For DDIN reference guide see pages 99-100 • For Multi-kit guide see pages 101-104



**95-5026 Ford Expedition 2003-2006
 Ford Explorer 2002-2005
 Ford Mustang 2001-2004
 Lincoln Aviator 2002-2005
 Lincoln Navigator 2003-2006
 Mercury Mountaineer 2002-2005**

DD

- Designed specifically for the installation of double-DIN radios



**99-5510 Ford • Lincoln • Mercury
 Multi-Kit 1982-2000**

- Professional Installer Series TurboKit offers quick conversion from 2-shaft to DIN
- OEM-style rear support included



**88-00-9000 Ford • Mazda • Nissan
 Toyota • Volvo Under Radio Multi-Pocket**

- Use with factory brackets for ISO DIN installs or when the factory radio and pocket are not present
- Snap on trim rings blend the pocket to the dash for a factory look



**99-5512 Ford • Lincoln • Mercury • Mazda
 Snap-in Style Radio Replacement
 Multi-Kit 1989-Up**

- Combined with 88-00-9000 will fill OEM double-DIN openings



99-5556 Ford Probe 1988-1992

- Professional Installer Series kit offers quick conversion from 2-shaft to DIN
- The bottom portion of the kit is removable to allow pocket retention



**99-5700 Ford • Lincoln • Mercury • Jeep
 Eagle • AMC • Mazda • Nissan
 Multi-Kit 1975-2000**

- Fits all DIN radios
- Bracket system allows recessed or flush mounting of any radio

N NEW **P** PAINTED **DD** DOUBLE DIN

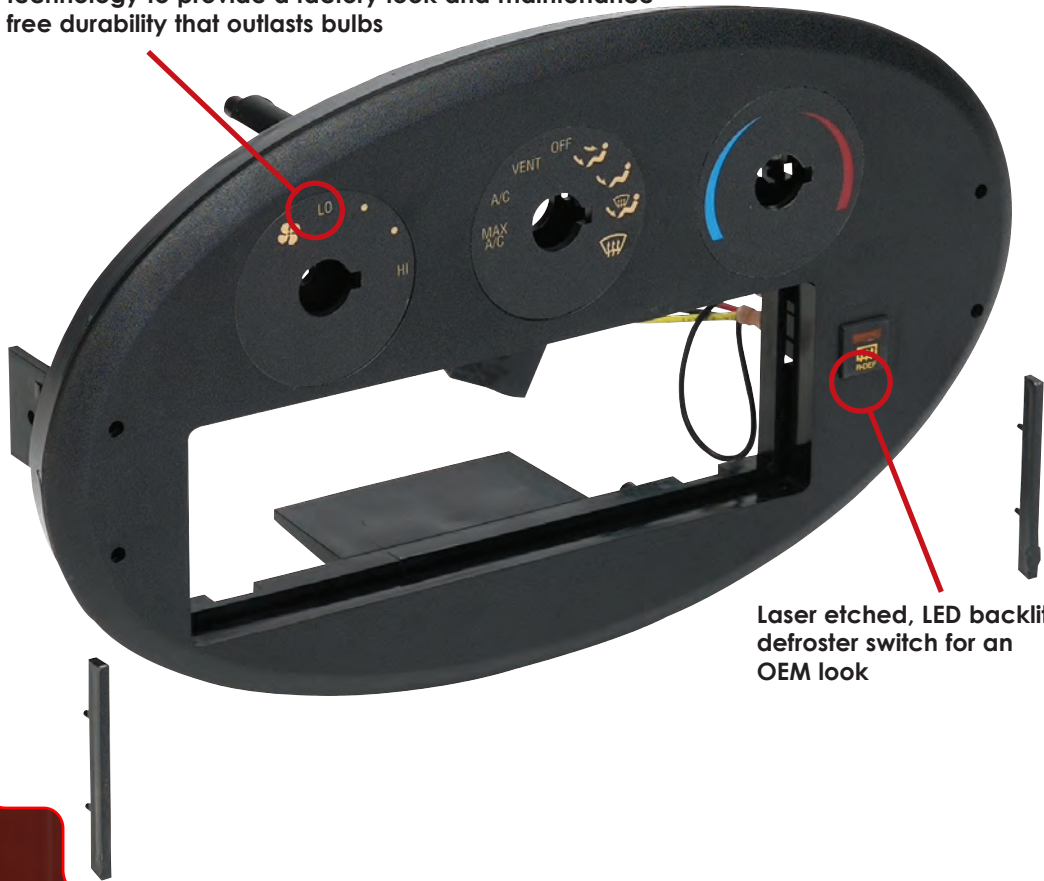
CALL TO ORDER: 1.800.221.0932



FORD

For specific applications please refer to the application guide on pages 181-269
For DDIN reference guide see pages 99-100 • For Multi-kit guide see pages 101-104

Electroluminescent light source duplicates OEM technology to provide a factory look and maintenance free durability that outlasts bulbs



Laser etched, LED backlit defroster switch for an OEM look

**99-5715 Ford Taurus • Mercury Sable
1996-1999 w/o Electronic Climate Controls**

- Uses factory heater and A/C controls
- Comes complete with rear window defroster switch, heater and A/C control illumination
- Plugs directly into car factory harness for rear defroster and illumination
- Use factory spring clips to attach to radio and snap into dash
- Also requires the 70-5716 for 98-99 models
- Requires 70-5715 harness

TURBO KITS

N NEW **P** PAINTED **DD** DOUBLE DIN

FAX YOUR ORDER: 1.800.647.8091

FORD

For specific applications please refer to the application guide on pages 181-269
For DDIN reference guide see pages 99-100 • For Multi-kit guide see pages 101-104

Electroluminescent light source duplicates OEM technology to provide a factory look and maintenance free durability that outlasts bulbs



Laser etched, LED backlit defroster switch for an OEM look

99-5715LD Ford Taurus 1996-1999 • Mercury Sable w/o Electronic Climate Controls

- Includes rear window defroster
- Comes complete with wire harness and antenna extension to run to trunk
- Use factory spring clips to allow kit to snap into the dash
- Uses factory heater and A/C controls
- Also requires the 70-5716 for 98-99 models

N NEW **P** PAINTED **DD** DOUBLE DIN

CALL TO ORDER: 1.800.221.0932



FORD

For specific applications please refer to the application guide on pages 181-269
For DDIN reference guide see pages 99-100 • For Multi-kit guide see pages 101-104

Electroluminescent light source duplicates OEM technology to provide a factory look and maintenance free durability that outlasts bulbs



Laser etched, LED backlit defroster switch for an OEM look

99-5715LDS Ford Taurus 1996-1999 • Mercury Sable w/o Electronic Climate Controls

- Includes rear window defroster
- Comes complete with wire harness and antenna extension to run to trunk
- Use factory spring clips to allow kit to snap into the dash
- Uses factory heater and A/C controls

TURBO KITS

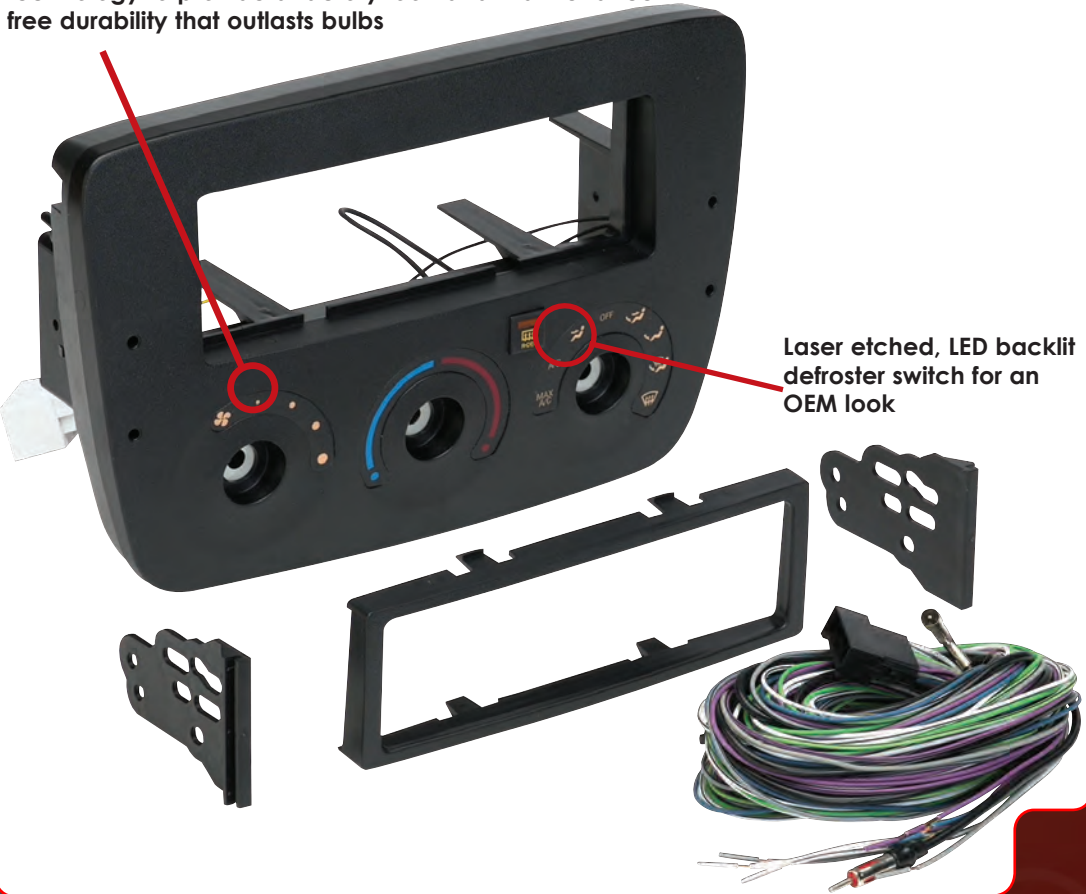
N NEW **P** PAINTED **DD** DOUBLE DIN

FAX YOUR ORDER: 1.800.647.8091

FORD

For specific applications please refer to the application guide on pages 181-269
For DDIN reference guide see pages 99-100 • For Multi-kit guide see pages 101-104

Electroluminescent light source duplicates OEM technology to provide a factory look and maintenance free durability that outlasts bulbs



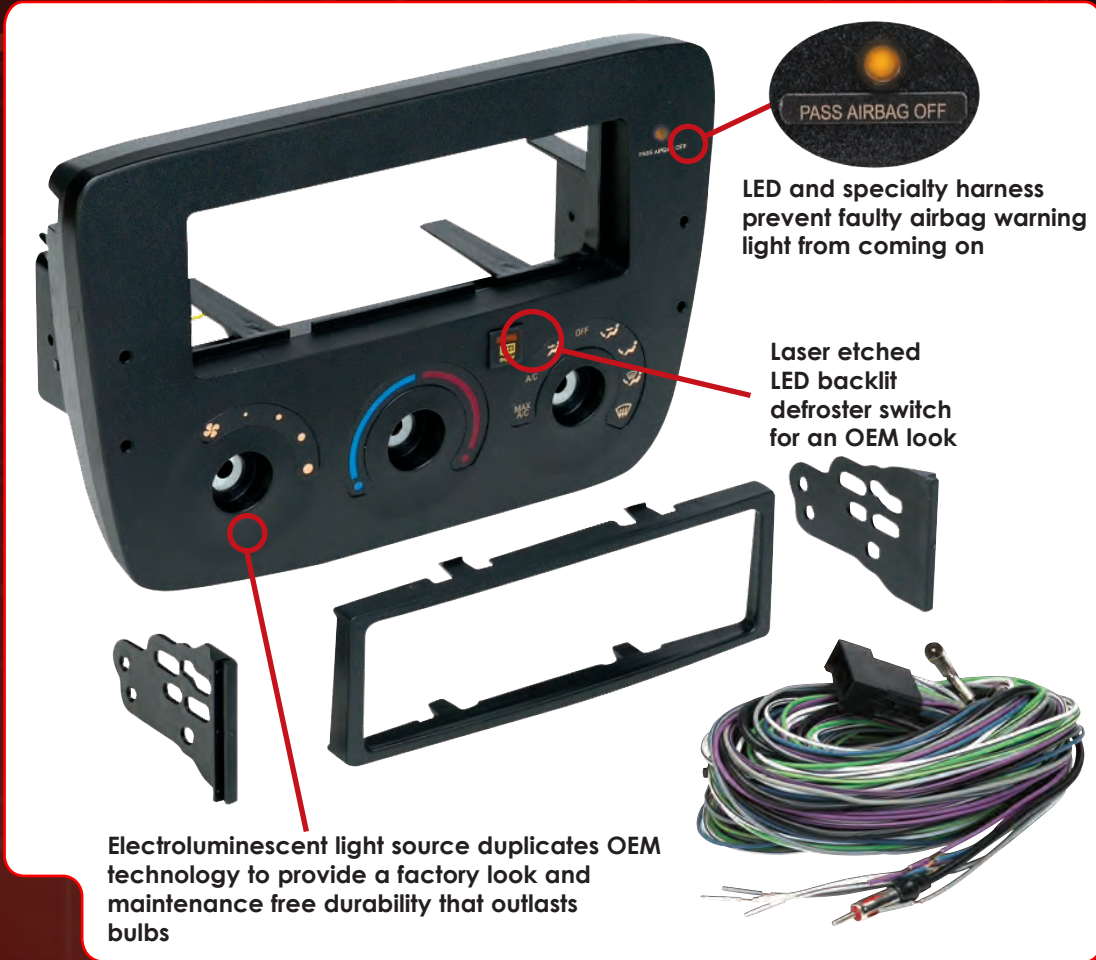
Laser etched, LED backlit defroster switch for an OEM look

99-5716 Ford Taurus 2000-2003 • Mercury Sable 2000-2003 w/o Electronic Climate Controls

- Comes complete with wire harness and antenna extension to run to trunk
- Use factory spring clips to allow kit to snap into the dash
- Uses factory heater and A/C controls
- All harnesses included



For specific applications please refer to the application guide on pages 181-269
For DDIN reference guide see pages 99-100 • For Multi-kit guide see pages 101-104



LED and specialty harness prevent faulty airbag warning light from coming on

Laser etched LED backlit defroster switch for an OEM look

Electroluminescent light source duplicates OEM technology to provide a factory look and maintenance free durability that outlasts bulbs

99-5717 Ford Taurus•Mercury Sable w/o Electronic Climate Controls 2004-2007

- Passenger airbag light indicator intergrated into our kit
- Uses the factory spring clips to allow the kit to snap into the dash
- Custom design allows retention of factory climate controls in their original location
- Metra's patented quick release, snap-in, ISO mount system with a custom trim ring
- Recessed DIN opening
- Comprehensive instruction manual including step by step disassembly and assembly
- Includes all necessary hardware for a complete installation
- Contoured and textured to match the factory dash
- All harnesses included

TURBO KITS

N NEW **P** PAINTED **DD** DOUBLE DIN

FAX YOUR ORDER: 1.800.647.8091

FORD

For specific applications please refer to the application guide on pages 181-269
 For DDIN reference guide see pages 99-100 • For Multi-kit guide see pages 101-104



LCD Display

Backlit soft touch buttons

TURBO KITS

99-5718 Ford Taurus 2000-2003

- Double DIN radio provision
- ISO stacked radio provision
- Painted a scratch resistant matte black finish
- Integrated climate controls
- Backlit soft touch rubber buttons with laser etched climate icons
- LCD display to show status
- All harnesses and antenna adapters included

N
P
DD

N NEW P PAINTED DD DOUBLE DIN



For specific applications please refer to the application guide on pages 181-269
For DDIN reference guide see pages 99-100 • For Multi-kit guide see pages 101-104



99-5719 Ford Taurus 2004-2007

- Double DIN radio provision
- ISO stacked radio provision
- Painted a scratch resistant matte black finish
- Integrated climate controls
- Backlit soft touch rubber buttons with laser etched climate icons
- LCD display to show status
- All harnesses and antenna adapters included
- Includes airbag indicator light



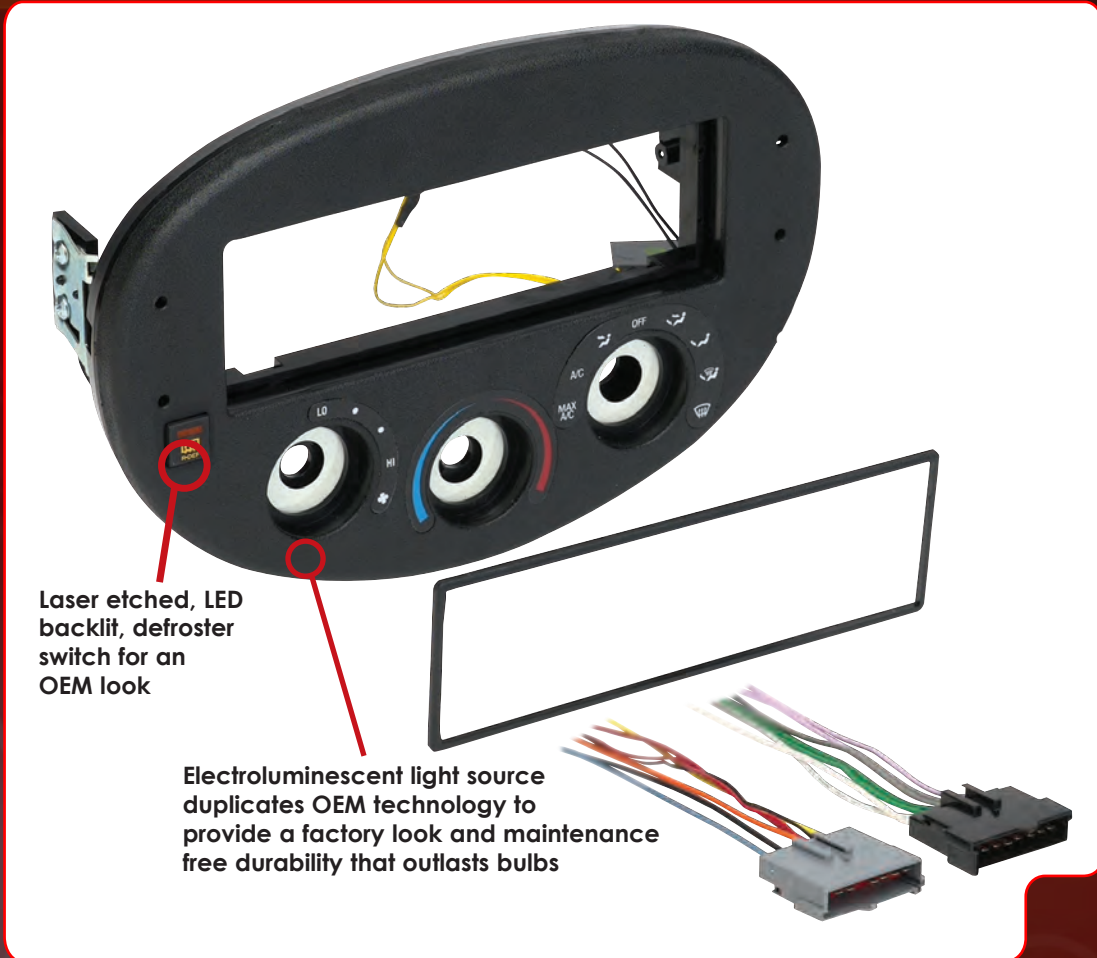
TURBO KITS

N NEW **P** PAINTED **DD** DOUBLE DIN

FAX YOUR ORDER: 1.800.647.8091

FORD

For specific applications please refer to the application guide on pages 181-269
For DDIN reference guide see pages 99-100 • For Multi-kit guide see pages 101-104



99-5720 Ford Escort • Mercury Tracer ZX2 1997-2003

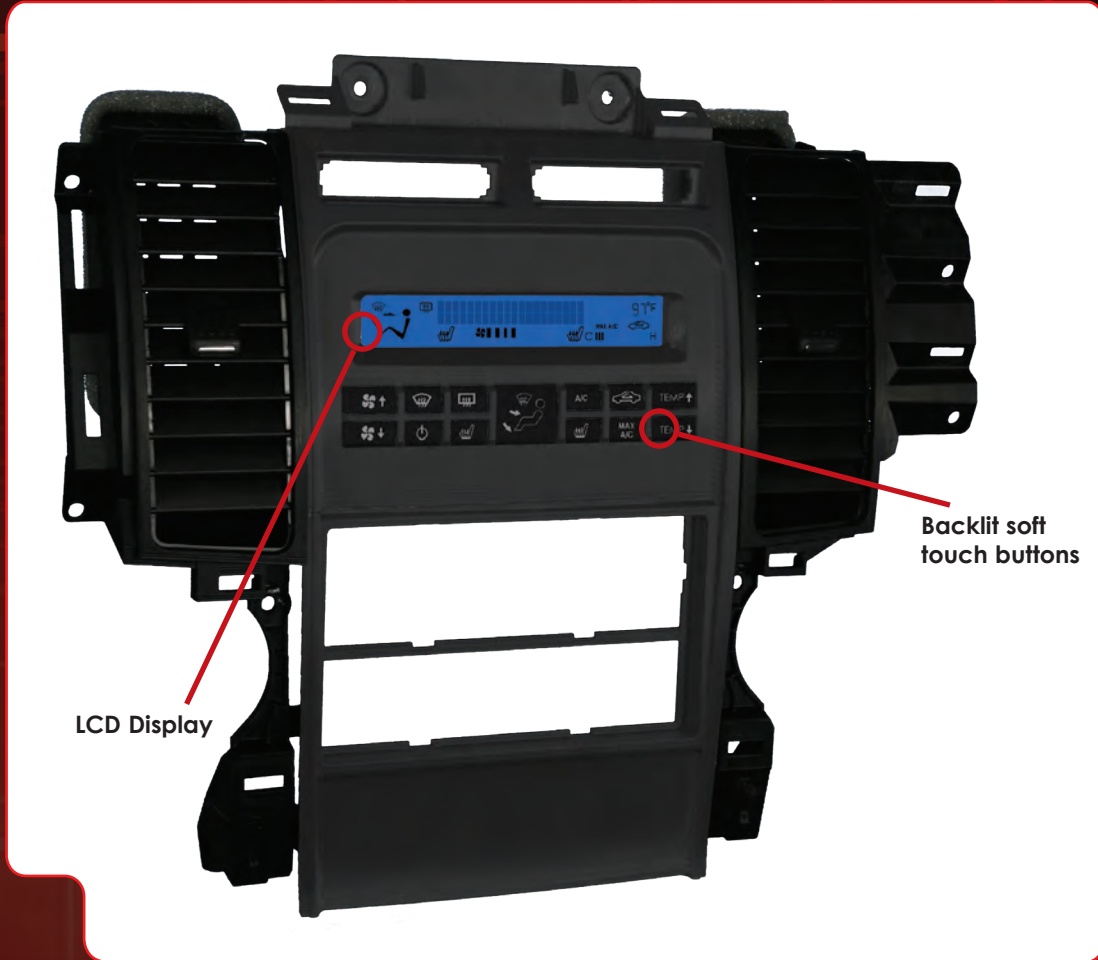
- Fits the Escort's radio opening perfectly and all functions are pre-wired for an easy plug-in installation
- Includes nighttime illumination and rear window defroster switch
- Utilizes the factory heating and A/C switches
- The power and 4/speakers harness is included with the kit (2003 models require the 70-5720)

N NEW **P** PAINTED **DD** DOUBLE DIN

CALL TO ORDER: 1.800.221.0932



For specific applications please refer to the application guide on pages 181-269
For DDIN reference guide see pages 99-100 • For Multi-kit guide see pages 101-104



**99-5721 Ford Taurus 2010-Up
(All excluding NAV equipped models)**

- Now includes features that allow for use in dual zone climate equipped cars
- For installation of both double DIN and DIN radios
- ISO stacked radio provision
- Retains all factory climate control functions with soft touch buttons and LCD display
- Retains heated seats and compass if vehicle is so equipped
- LCD display to show status
- Painted charcoal to match the OEM finish



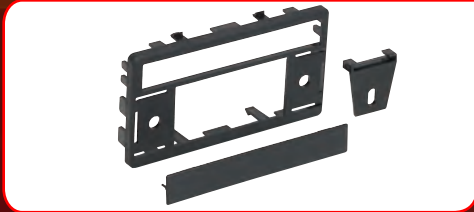
TURBO KITS

N NEW **P** PAINTED **DD** DOUBLE DIN

FAX YOUR ORDER: 1.800.647.8091

FORD

For specific applications please refer to the application guide on pages 181-269
For DDIN reference guide see pages 99-100 • For Multi-kit guide see pages 101-104



99-5600 Ford • Lincoln • Mercury Mazda Multi-Kit 1995-Up

- Built-in 1/2-DIN equalizer opening
- Quick conversion from 2-shaft to DIN



99-5800 Ford F150 Truck • Expedition 1997-1998

- Built-in pocket
- Can be installed with the pocket on the top or on the bottom
- The kit will mount a recessed DIN radio so that no modification to the dash is needed



99-5801 Ford F150 Truck • Expedition 1997-1998 (w/o Pocket)

- Accommodates DIN and 2-shaft radios with a recessed opening
- Fits contour of dash with no gaps
- The kit will mount a recessed DIN radio so that no modification to the dash is needed



99-5802 Ford • Lincoln • Mercury Mazda Multi-Kit 1995-2010

- Designed for DIN-mount radios
- Pocket holds one CD jewel case
- OEM-style rear-support included



99-5804 Ford • Lincoln • Mazda Mercury Truck Multi-Kit 1995-2008

- Designed for DIN-mount radios
- Pocket holds one CD jewel case



95-5817 Ford/Lincoln/Mercury/Mazda Multi-Kit

- Designed specifically for the installation of double DIN radios or two single DIN radios
- High-grade ABS plastic - contoured and textured to compliment factory dash
- All necessary hardware to install an aftermarket radio

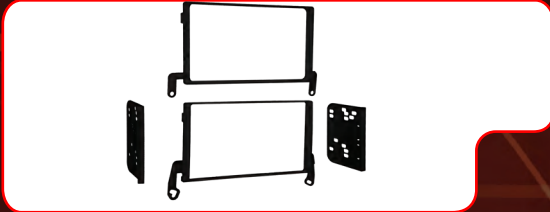
DD

N NEW **P** PAINTED **DD** DOUBLE DIN

CALL TO ORDER: 1.800.221.0932



For specific applications please refer to the application guide on pages 181-269
 For DDIN reference guide see pages 99-100 • For Multi-kit guide see pages 101-104



**95-5818 Ford/Lincoln truck Multi-Kit
 F-150, Expedition, Navigator &
 Blackwood 1997-2003**

DD

- High-grade ABS plastic - contoured and textured to compliment factory dash
- All necessary hardware to install an aftermarket radio
- Painted to match OEM color and finish



**99-5806 Mercury Cougar 1999-2002
 Ford Focus 2000-2004**

- Metra's patented Snap-In ISO Support System
- ISO trim ring



**95-5806 Mercury Cougar 1999-2002
 Ford Focus 2000-2004**

DD

- Designed specifically for the installation of double-DIN radios



99-5807 Ford • Mercury 2004-2008

DD

- Metra's patented Snap-In ISO Support System
- Recessed DIN mount
- ISO trim ring
- Double-DIN trim plate and brackets



99-5808 Ford • Mercury 2004-2007

- Metra's patented Snap-In ISO Support System
- Recessed DIN mount
- ISO trim ring



99-5809 Lincoln Continental 1998-2002

- Recessed DIN opening
- Metra's patented Snap-In ISO Support System
- Contoured to match factory dash

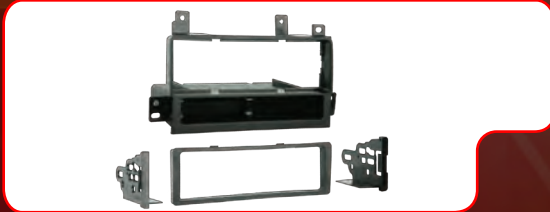
TURBO KITS

N NEW **P** PAINTED **DD** DOUBLE DIN

FAX YOUR ORDER: 1.800.647.8091

FORD

For specific applications please refer to the application guide on pages 181-269
 For DDIN reference guide see pages 99-100 • For Multi-kit guide see pages 101-104



99-5810 Lincoln Town Car 2003-2010

- Recessed DIN opening
- Metra's patented Snap-In ISO Support System



95-5810 Lincoln Town Car 2003-2010

- Metra's patented quick release, snap-in, ISO mount system with custom trim ring

DD



99-5812 Ford • Lincoln Mercury 2004-2010

- Metra's patented quick release, snap-in ISO mount system with custom trim ring
- Recessed DIN opening



95-5812 Ford • Lincoln Mercury 2004-2010

- Metra's patented Snap-In ISO Support System
- Comes with oversized under-radio storage pocket

DD



99-5813 Lincoln Navigator MKX 2007-2010 & MKZ 2007-2009 Zephyr 2006

- For models not equipped with navigation
- Metra's patented quick release, snap-in, ISO mount system with a custom trim ring
- Recessed DIN opening



99-5814 Ford Escape • Mercury Mariner Mazda Tribute 2008-2010

- Metra's patented quick release, snap-in, ISO mount system with a custom trim ring
- Recessed DIN opening
- Removable oversized storage pocket with built in radio supports
- Painted matte black to match OEM color and finish

P

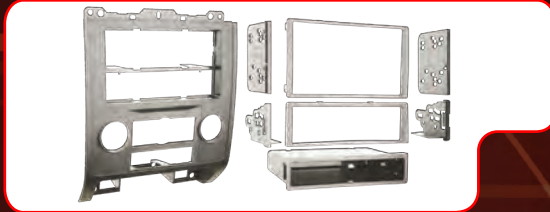
DD

N NEW **P** PAINTED **DD** DOUBLE DIN

CALL TO ORDER: 1.800.221.0932

FORD

For specific applications please refer to the application guide on pages 181-269
 For DDIN reference guide see pages 99-100 • For Multi-kit guide see pages 101-104



99-5814S Ford Escape • Mercury Mariner Mazda Tribute 2008-2010

P

DD

- Metra's patented quick release, snap-in, ISO mount system with a custom trim ring
- Painted silver to match OEM color and finish
- Also includes parts for installation of one double DIN or two single DIN radios



99-5816 Ford Focus 2008-2010

P

DD

- Custom design allows retention of the factory air vents in their original location
- Metra's patented Snap-In ISO Support System
- Contoured and painted silver to match factory dash



99-5819 Ford F-150 2009-2010 (Base Model Only)

- High-grade ABS plastic - contoured and textured to compliment factory dash
- All necessary hardware to install an aftermarket radio
- Painted to match OEM color and finish



95-5819 Ford F-150 2009-2010 (Base Model Only)

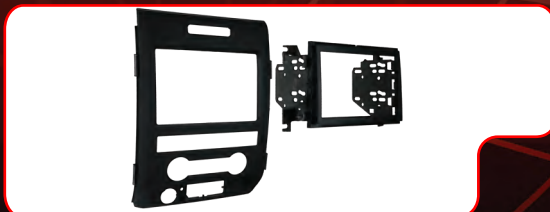
DD

- High-grade ABS plastic - contoured and textured to compliment factory dash
- All necessary hardware to install an aftermarket radio
- Painted to match OEM color and finish



99-5820 Ford F-150 2009-2010 (Excluding Base Model)

- High-grade ABS plastic - contoured and textured to compliment factory dash
- All necessary hardware to install an aftermarket radio
- Painted to match OEM color and finish



95-5820 Ford F-150 2009-2010 (Excluding Base Model)

DD

- High-grade ABS plastic - contoured and textured to compliment factory dash
- All necessary hardware to install an aftermarket radio
- Painted to match OEM color and finish

TURBO KITS

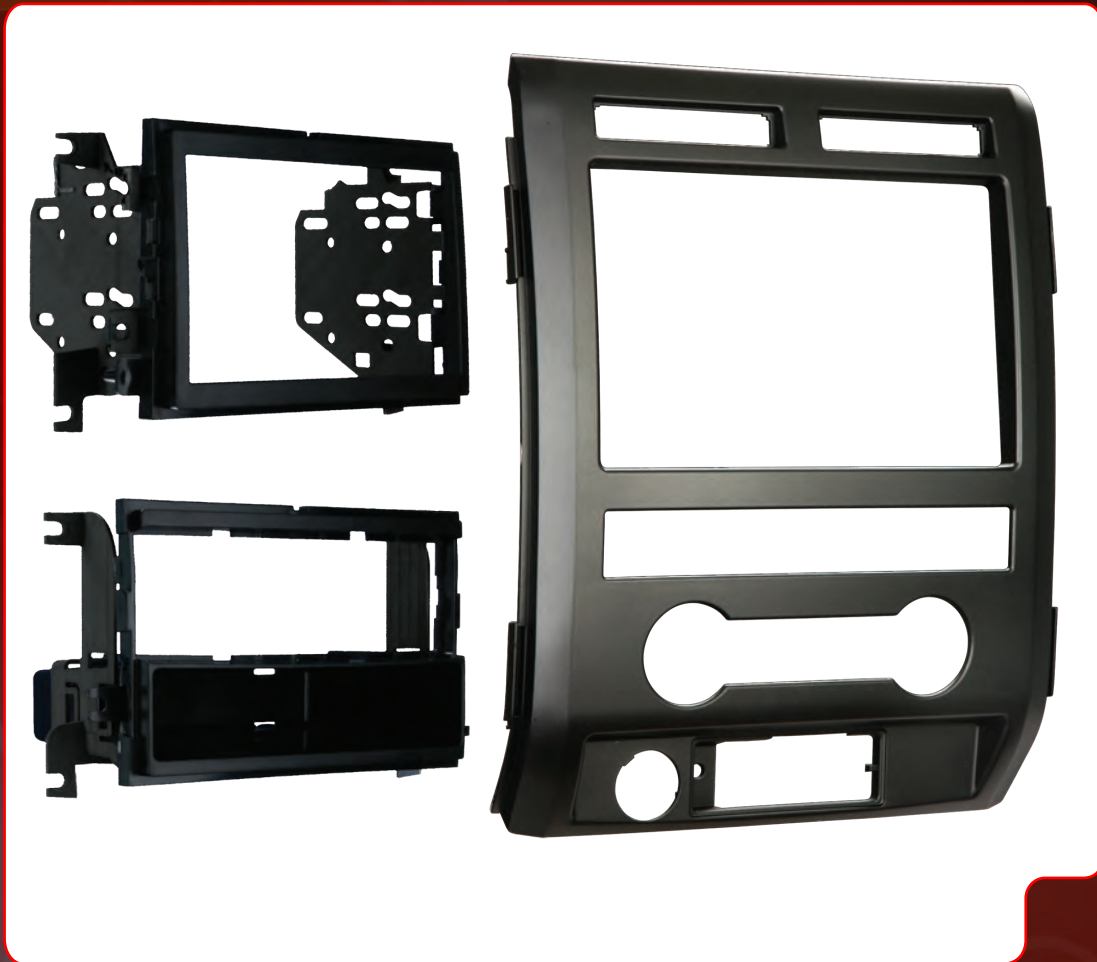
N NEW **P** PAINTED **DD** DOUBLE DIN

FAX YOUR ORDER: 1.800.647.8091



FORD

For specific applications please refer to the application guide on pages 181-269
For DDIN reference guide see pages 99-100 • For Multi-kit guide see pages 101-104



95-5822B Ford F-150 2009-2010

- Double DIN radio provision
- Painted a scratch resistant matte black
- Specifically for non NAV models that have the driver info switches in the factory panel

99-5822B Ford F-150 2009-2010

- Painted a scratch resistant matte black
- Specifically for non NAV models that have the driver info switches in the factory panel



95-5822MM • 99-5822MM Milano Maple F-150 Lariat



95-5822CM • 99-5822CM Curly Maple F-150 King Ranch



95-5822AS • 99-5822AS Ash Satin F-150 Platinum

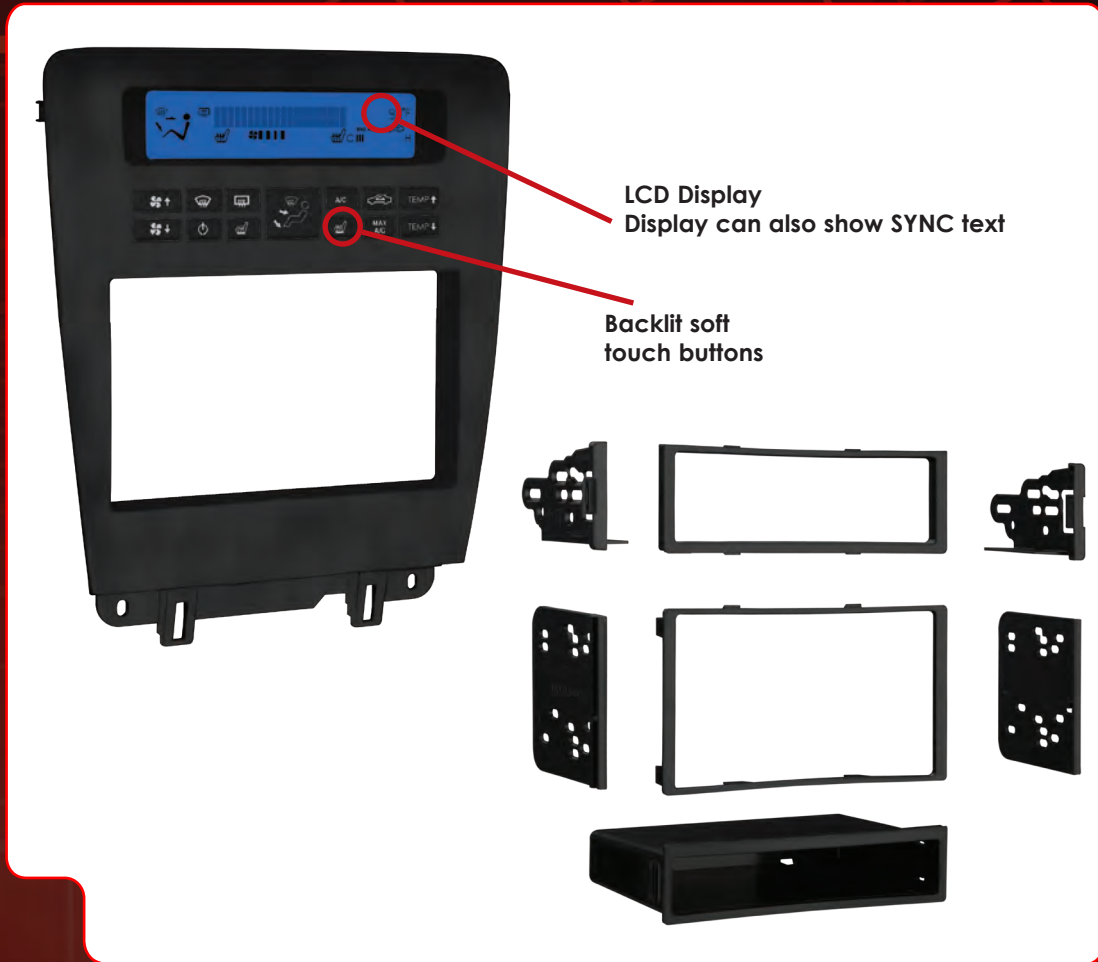


N NEW **P** PAINTED **DD** DOUBLE DIN

CALL TO ORDER: 1.800.221.0932



For specific applications please refer to the application guide on pages 181-269
For DDIN reference guide see pages 99-100 • For Multi-kit guide see pages 101-104



**99-5823CH Ford Mustang 2010
(All excluding NAV equipped models)**

- For installation of both double DIN and DIN radios
- ISO stacked radio provision
- Retains all factory climate control functions with soft touch buttons and LCD display
- Retains heated seats and compass if vehicle is so equipped
- LCD display will also show SYNC text (with SYNC interface sold separately)
- Painted a scratch resistant charcoal to match the OEM finish



TURBO KITS

N NEW **P** PAINTED **DD** DOUBLE DIN

FAX YOUR ORDER: 1.800.647.8091

FORD/GM

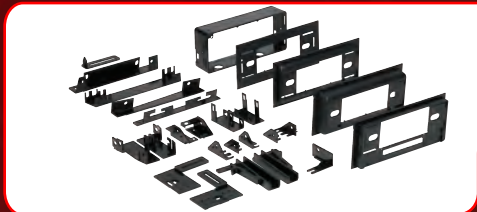
For specific applications please refer to the application guide on pages 181-269
 For DDIN reference guide see pages 99-100 • For Multi-kit guide see pages 101-104



99-5821B FORD FUSION • MERCURY MILAN 2010

- For both DIN and DDIN
- Painted matte black to match dash
- Also available in:
Silver 99-5821S
Red 99-5821R
Blue 99-5821BL

N
P
DD



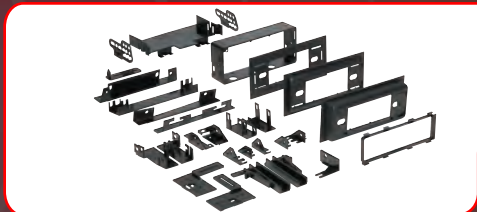
99-4544 GM Premium Multi-Kit with EQ Option and Mounting Brackets Buick • Cadillac • Chevrolet • GMC Oldsmobile • Pontiac • Saturn 1982-2005

- Professional Installer Series Kit offers quick conversion from 2-shaft to DIN
- Comes complete with four ABS plastic face plates: flat 1/2", 1/2" with equalizer option, and 1" extension which snap onto the plastic housing



99-4545 GM Premium Multi-Kit with EQ Option Buick • Cadillac • Chevrolet • GMC Oldsmobile • Pontiac • Saturn 1982-2005

- Professional Installer Series Kit offers quick conversion from 2-shaft to DIN
- Comes complete with four ABS plastic faceplates: flat 1/2", 1/2" with equalizer option, and 1" extension which snap onto the plastic housing
- Designed to use original equipment factory brackets, or the optional 02-4544 bracket kit for times when OEM brackets are missing



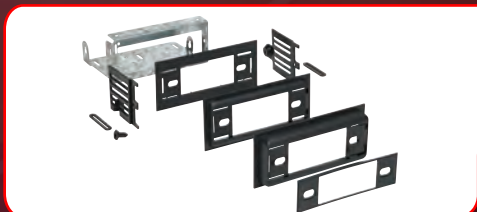
99-4644 GM Premium Multi-Kit With Mounting Brackets Buick • Cadillac • Chevrolet • GMC Oldsmobile • Pontiac • Saturn 1982-2005

- Comes with three different mounting faceplate depths: flat, 1/2" and 1"
- Can ISO mount a radio at any of the three faceplate depths
- Comes with rear support
- Designed to use original equipment factory brackets, or the 02-4544 bracket kit that is included for times when OEM brackets are missing



99-4000 GM Premium Multi-Kit with pocket Buick • Cadillac • Chevrolet • GMC • Oldsmobile Pontiac • Saturn 1982-2005

- Special design accommodates DIN, DIN pullout, and removable face DIN radios
- Comes with under radio CD jewel case pocket



99-4012 GM Premium Pullout Multi-Kit with Flat, 1/2" & 1" Extensions 1982-2005 Buick • Cadillac • Chevrolet • GMC Oldsmobile • Pontiac • Saturn

- Comes complete with three ABS plastic faceplates: flat, 1/2" and 1" extension which snap onto the metal basket

N NEW **P** PAINTED **DD** DOUBLE DIN

CALL TO ORDER: 1.800.221.0932



For specific applications please refer to the application guide on pages 181-269
For DDIN reference guide see pages 99-100 • For Multi-kit guide see pages 101-104



99-4500 GM Multi-Kit 1/2" Extension
1982-2005 Buick • Cadillac • Chevrolet
GMC • Oldsmobile • Pontiac • Saturn

- Professional Installer Series TurboKit offers quick conversion from 2-shaft to DIN
- Round edges finish off the face design and update this classic kit
- Designed to use original equipment factory brackets or the 02-4544 bracket kit (optional) for times when OEM brackets are missing



99-4503 GM Multi-Kit Flat Trimplate
1982-2005

- Quick conversion from 2-shaft to DIN opening
- Designed to use original equipment factory brackets, or the optional 02-4544 bracket kit for times when OEM brackets are missing



99-4505 GM Multi-Kit 3/4" Extension
1982-2005 Buick • Cadillac • Chevrolet
GMC • Oldsmobile • Pontiac • Saturn

- Quick conversion from 2-shaft to DIN opening
- Fits any GM J body radio opening where a 3/4" extension is required
- Designed to use original equipment factory brackets, or the optional 02-4544 bracket kit for times when OEM brackets are missing



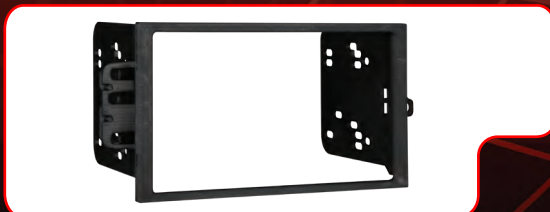
99-4700 GM Multi-Kit 1982-2005
Buick • Cadillac • Chevrolet • GMC
Oldsmobile • Pontiac • Saturn

- Bracket system design allows the kit to telescope in and out in any increment; it is not restricted to 1/8" steps
- Designed to use original equipment factory brackets, or the optional 02-4544 bracket kit for times when OEM brackets are missing



99-2001 GM Multi-Kit 1994-2008
(oversize GM radio) Buick • Cadillac
Chevrolet • GMC • Oldsmobile • Pontiac • Isuzu

- Quick conversion from 2-shaft to DIN
- Includes a recessed DIN opening
- Allows installation of 1/4" or 1/2" DIN equalizer



95-2001 GM Multi-Kit 1994-2008
(oversize GM radio) Buick • Cadillac
Chevrolet • GMC • Oldsmobile
Pontiac • Isuzu

- Designed specifically for the installation of double-DIN radios



TURBO KITS

N NEW **P** PAINTED **DD** DOUBLE DIN

FAX YOUR ORDER: 1.800.647.8091



For specific applications please refer to the application guide on pages 181-269
For DDIN reference guide see pages 99-100 • For Multi-kit guide see pages 101-104



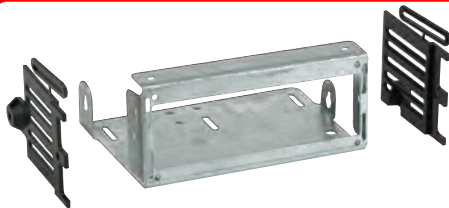
89-99-4002 GM Component Parts

- 1" trimplate
(Use with 87-09-4012 or 87-09-4544)



87-09-4544 Plastic Housing

- Make additional kits!
- Use with left-over trimplates from 99-4544
or use with: 89-99-4000, 89-99-4001, 89-99-4002



87-09-4012 Metal Basket

- Use with left-over trimplates from
99-4012 or use with: 89-99-4000
89-99-4001, 89-99-4002



**99-2002 Cadillac Eldorado
Seville 1992-1995 (console shift only)**

- Designed for DIN mount radios
- Does not fit floor shift models



**99-2004 Cadillac DeVille
(column shift only) 1996-1999
Cadillac Catera 1997-2001**

- Recessed DIN radio opening
- ISO mount radio compatible using snap-in
ISO radio mounts



**95-2004 Cadillac DeVille
(column shift only) 1996-1999
Cadillac Catera 1997-2001**

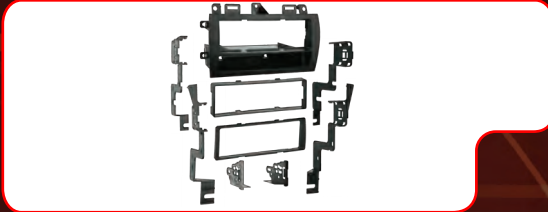
- Designed specifically for the installation of
double-DIN radios



N NEW **P** PAINTED **DD** DOUBLE DIN

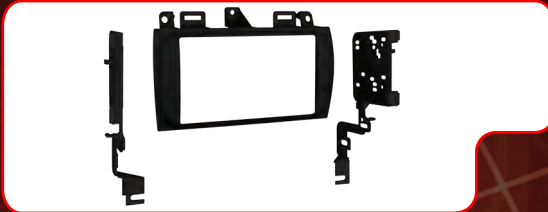


For specific applications please refer to the application guide on pages 181-269
For DDIN reference guide see pages 99-100 • For Multi-kit guide see pages 101-104



**99-2005 Cadillac Eldorado 1996-2002
Seville 1996-2005 Deville 2000-2005
DeVile Concours (console shift only)
1996-1999**

- Metra's patented Snap-In ISO Support System
- Oversized under-radio pocket
- Recessed DIN mount



**95-2005B Cadillac Eldorado 1996-2002
Seville 1996-2005 Deville 2000-2005
DeVile Concours (console shift only)
1996-1999**

- Designed specifically for the installation of double-DIN radios

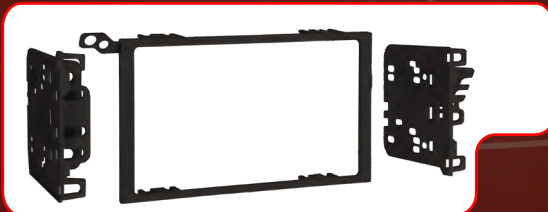
DD



**99-2009 GM • Suzuki
Multi-Kit 1990-2010**

- Provides pocket with recessed mounting of a DIN radio or an ISO DIN radio using Metra's patented ISO quick release brackets

N



**95-2009 GM • Suzuki
Multi-Kit 1990-2010**

- Metra's patented quick release snap-in, ISO mount system with custom trim ring
- Allows the installation of a double DIN radio or two single DIN radios

N

DD



**99-2006 Cadillac CTS 2003-2007
& SRX 2004-2006**

- Interchangeable design allows recessed DIN opening to be above or below the pocket
- Metra's patented quick release, snap-in, ISO mount system with custom trim ring
- Painted matte black to match OEM color and finish
- DIN & DDIN

N

P

DD



**99-2006G Cadillac CTS 2003-2007
& SRX 2004-2006**

- Painted to match gray OEM color and finish
- Same features as 99-2006

N

P

DD

TURBO KITS

N NEW **P** PAINTED **DD** DOUBLE DIN

FAX YOUR ORDER: 1.800.647.8091



For specific applications please refer to the application guide on pages 181-269
For DDIN reference guide see pages 99-100 • For Multi-kit guide see pages 101-104



99-2007 Cadillac Escalade (including ESV & EXT) 2007-2010

P
DD

- A large, elegant trim panel and a unique ISO mounting system, provide the space in a dash where depth is limited
- Removable oversized storage pocket
- Includes parts for installation of double DIN radios
- Painted matte black to match factory finish



99-2008 Cadillac DTS 2006-10 SRX 2007-2008

P
DD

- Metra's patented quick release snap-in, ISO mount system with custom trim ring
- Also includes parts for installation of double DIN radios
- Painted charcoal to match OEM color and finish



99-2010 Cadillac STS

P
DD

- Metra's patented quick release snap-in, ISO mount system with custom trim ring
- Also includes parts for installation of double DIN radios
- Painted matte black to match OEM color and finish



99-3000 Chevrolet•GMC Full Size Truck 1988-1994

N

- Automotive-grade ABS plastic provides factory finish
- Utilizes factory AC vents and clips
- Snap-in quick release ISO mount brackets

Also available in factory colors:



88-00-3301 Chevrolet•GMC•Full-Size Truck Pocket 1988-1994

- OEM radio replacement pocket
- Includes ribs to hold cassettes (in box) or CDs (jewel case)
- To be used with 99-3000 or 99-3001

N NEW **P** PAINTED **DD** DOUBLE DIN



For specific applications please refer to the application guide on pages 181-269
For DDIN reference guide see pages 99-100 • For Multi-kit guide see pages 101-104



99-3001 Chevrolet • GMC Full Size Truck 1988-1994

- To be used with factory dash panel
- Fits over factory pocket. (Factory pocket must be removed for installation).



99-3002 Cadillac • Chevrolet • GMC Truck Multi-Kit 1995-2005

- Quick conversion from DIN to 2-shaft with snap-in style shaft supports
- Includes a recessed DIN opening
- Specially designed for ISO mount radio with ISO trim ring



88-00-3302 Replacement Pocket GM Truck & SUV 1995-2001

- Equipped from the factory, 1995-2001 GM trucks and SUVs have a cassette player or single CD player located separately from the factory radio.
- For a complete installation, combine with 99-3002 or 99-3003 dash kit



99-3009 Chevrolet Camaro 1993-96 Pontiac Firebird 1993-2002

- Professional Installer Series TurboKit offers quick conversion from 2-shaft to DIN
- Recessed for DIN applications
- Fills in gap on right side opening



99-3033 Chevrolet Impala Caprice 1985-1990

- Replaces 99-3032
- Metra's patented Snap-In ISO Support System
- Recessed DIN mount



For specific applications please refer to the application guide on pages 181-269
For DDIN reference guide see pages 99-100 • For Multi-kit guide see pages 101-104



Blue LED illuminated climate control display

Backlit soft touch buttons

99-3010S Chevrolet Camaro 2010

- Designed for all models of the 2010 Camaro, for installation of DIN and/or DDIN radios
- The large sweeping panel is designed with a factory look and painted silver to match the OEM finish
- The blue LED illuminated climate control display and soft touch buttons are designed to retain full functionality of the Camaros climate system
- The kits control layout also retains heated seats, hazard lights, and lock and unlock controls
- The included interface will also retain all audio and Onstar system functions
- All software is flash updateable to adapt to changes



N NEW **P** PAINTED **DD** DOUBLE DIN

CALL TO ORDER: 1.800.221.0932



For specific applications please refer to the application guide on pages 181-269
For DDIN reference guide see pages 99-100 • For Multi-kit guide see pages 101-104



**99-3042 Chevrolet S10 & S15 1986-1993
Blazer • GMC Jimmy 1986-1994
Camaro 1982-1992 • Saturn 1991-1994
Pontiac Firebird 1982-1992**

- Offers quick conversion from 2-shaft to DIN
- Attractive 1" rounded extension



99-2021 Buick Lacrosse 2005-2009

- Metra's patented quick-release snap-in ISO mount system with a custom trim ring
- Also includes parts for installing a double-DIN radio

DD



99-2020 Buick Regal 1988-1994

- Professional Installer Series TurboKit suited to aftermarket applications
- Quick conversion from 2-shaft to DIN
- Also available: GM radio replacement pocket to use when removing OEM radio and installing radio in center dash



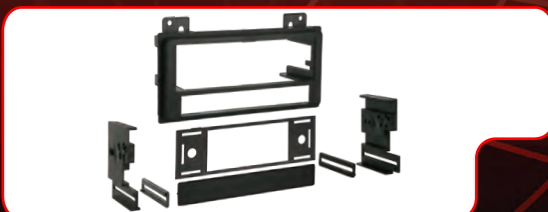
88-00-2020 Buick Regal Cassette Pocket 1988-1994

- OEM radio replacement pocket
- Includes ribs to hold cassette boxes
- For a complete installation combine with 99-2020



**99-3043 Chevrolet S10 & T10 Pickup
GMC Sonoma 1994-1997
Blazer • Jimmy 1995-1997
Isuzu Hombre 1996-1997
Olds Bravada 1996-1997**

- Specially designed for ISO mount radio with ISO trim ring
- Unique design retains factory pocket adds strength to kit



**99-3044 Chevrolet S10 & T10 Pickup
GMC Sonoma 1994-1997
Blazer • Jimmy 1995-1997
Isuzu Hombre 1996-1997
Olds Bravada 1996-1997**

- Installs ISO mount radios with ISO trim ring
- Radio side support is provided by our patented "Side Arm Support System™"
- Allows installation 1/4 or 1/2 DIN equalizer

TURBO KITS

N NEW **P** PAINTED **DD** DOUBLE DIN

FAX YOUR ORDER: 1.800.647.8091



For specific applications please refer to the application guide on pages 181-269
For DDIN reference guide see pages 99-100 • For Multi-kit guide see pages 101-104



**99-3043G Chevrolet S10 & T10 Pickup
GMC Sonoma 1994-1997
Blazer • Jimmy 1995-1997
Isuzu Hombre 1996-1997
Olds Bravada 1996-1997**

- Painted to match factory gray finish
- Same features as 99-3043



**99-3044G Chevrolet S10 & T10 Pickup
GMC Sonoma 1994-1997
Blazer • Jimmy 1995-1997
Isuzu Hombre 1996-1997
Olds Bravada 1996-1997**

- Painted to match factory gray finish
- Same features as 99-3044



99-3051 Chevrolet Corvette 1990-1996

- Mounts an ISO mount radio with included pocket
- Accepts a double-DIN radio also



87-99-3052 Chevrolet Truck 1973-1987

- 2-shaft or DIN
- Adds structural support to dash when installing a DIN radio



**99-3101 Chevrolet Corsica,
Beretta 1988-1990 (AC)**

- Professional Installer Series TurboKit offers quick conversion from 2-shaft to DIN
- Fits round heater/AC controls without modification
- Silk screened with factory style lettering
- Allows control illumination



**99-3102 Chevrolet Corsica
Beretta 1988-1990 (Non-AC)**

- Professional Installer Series TurboKit offers quick conversion from 2-shaft to DIN pullout
- Fits slide heater controls without modification
- Silk screened with factory style lettering
- Allows control illumination

N NEW **P** PAINTED **DD** DOUBLE DIN

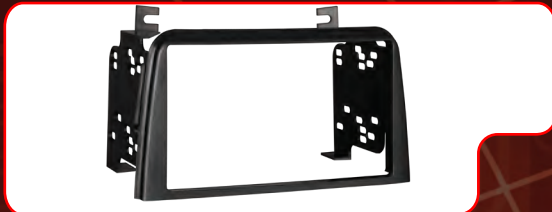


For specific applications please refer to the application guide on pages 181-269
For DDIN reference guide see pages 99-100 • For Multi-kit guide see pages 101-104



99-3100 Saturn (All Models) 1995-1999

- Includes a recessed DIN Opening
- Rear support legs provide added stability



95-3105 Saturn (All Models) 1996-1999

- Double DIN radio provision

DD



99-3105 Saturn 1995-1999

- Pocket holds two CD jewel cases
- Designed for DIN mount radios
- Easy-to-use instructions



95-3106 Saturn (All Models) 2000-2005

- Double DIN radio provision

DD



99-3106 All Saturns (except Relay) 2000-2005

- Special design allows installation of one single ISO mounted unit with pocket, two single ISO mounted units, or a double-DIN unit
- Pocket holds three CD jewel cases

DD



99-3300 Chevrolet • Oldsmobile Pontiac Multi-Kit 1994-2004

- Professional Installer Series TurboKit offers quick conversion from 2-shaft to DIN

TURBO KITS

N NEW **P** PAINTED **DD** DOUBLE DIN

FAX YOUR ORDER: 1.800.647.8091



For specific applications please refer to the application guide on pages 181-269
For DDIN reference guide see pages 99-100 • For Multi-kit guide see pages 101-104



99-3301 GM Multi Kit 1995-2006

- Specially designed for ISO mount radios
- Pocket holds two CD jewel cases



99-3302 Chevrolet Cobalt 2005-2010

- Equinox 2005-2006 • HHR 2006-2010
- Malibu 2004-2010 • Pontiac G5 2007-2009
- Solstice 2006-2009 • Torrent 2006 Saturn
- Aura 2007-2009 • Ion 2006-2007 • Vue
- 2006-2007 • Sky 2006-2009

N
P

- New OEM matched finish



95-3302 Chevrolet Cobalt 2005-2010

- Equinox 2005-2006 • HHR 2006-2010
- Malibu 2004-2010 • Pontiac G5 2007-2009
- Solstice 2006-2009 • Torrent 2006 Saturn
- Aura 2007-2009 • Ion 2006-2007 • Vue
- 2006-2007 • Sky 2006-2009

N
P
DD

- New OEM matched finish
- Designed specifically for the installation of double-DIN radios



99-3304 Chevrolet Corvette 2010

- Uplander • Pontiac Montana SV6 • Saturn
- Relay • Buick Terraza • Hummer H3
- 2005-2010

N
P

- New OEM matched finish
- Metra's patented Snap-In ISO Support System
- Recessed DIN mount
- ISO trim ring
- Painted matte black to match factory finish



95-3304 Chevrolet Corvette 2010

- Uplander • Pontiac Montana SV6 • Saturn
- Relay • Buick Terraza • Hummer H3
- 2005-2010

N
P
DD

- New OEM matched finish
- Designed specifically for the installation of double-DIN radios
- Painted matte black to match factory finish



99-3305 GM Multi-Kit 2006-2010

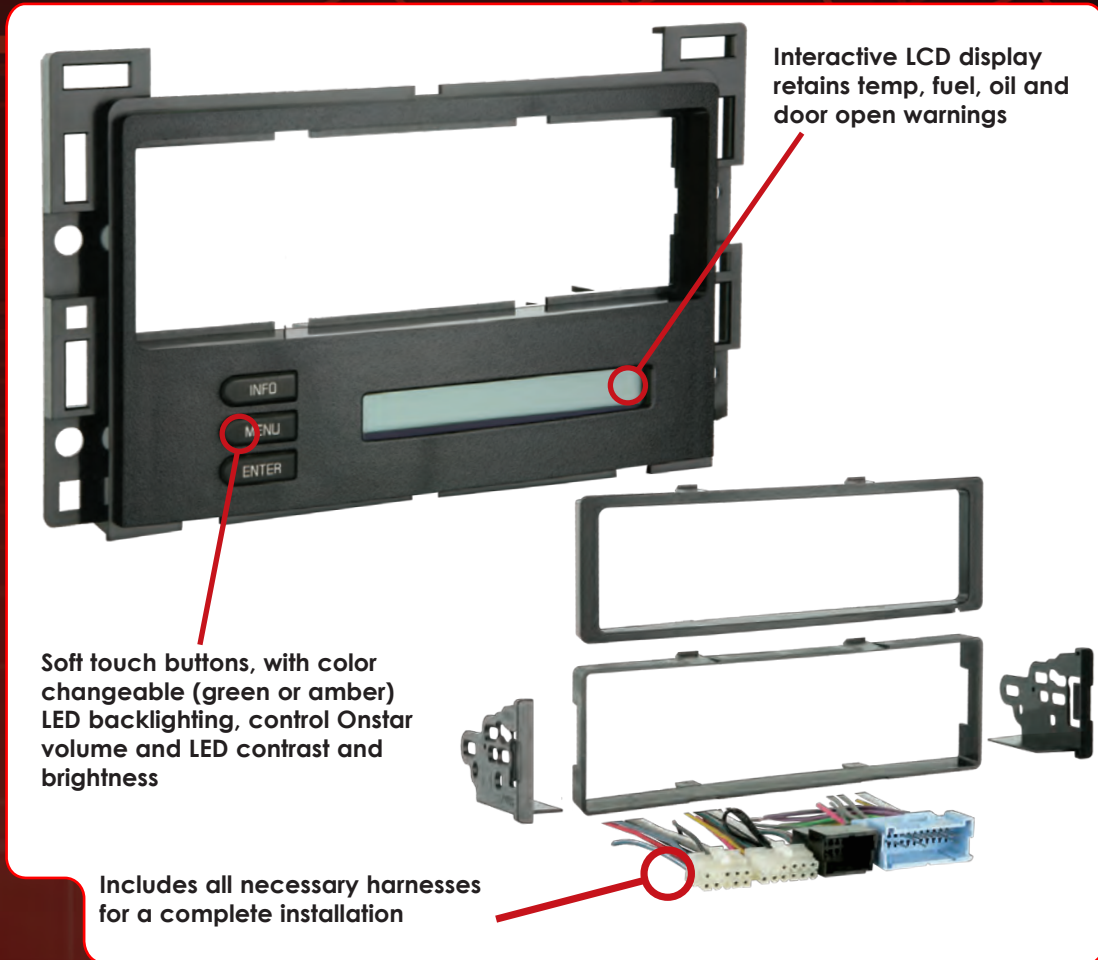
- Metra's patented, quick release, snap-in ISO-mount system with custom trim ring
- Recessed DIN opening
- Storage pocket with built-in radio supports below the radio opening
- Painted matte black to match factory finish

P

N NEW P PAINTED DD DOUBLE DIN



For specific applications please refer to the application guide on pages 181-269
For DDIN reference guide see pages 99-100 • For Multi-kit guide see pages 101-104



99-3303 Chevrolet Malibu & Malibu Maxx 2004-2007

Cobalt 2005-2006 • Pontiac G6 2005-2009

- Recessed DIN opening
- Metra's patented snap-in ISO support system
- Contoured to match factory dashboard color and texture
- Includes ISO trim ring
- Interactive LCD display that retains OnStar, RAP (retained accessory power) and the factory Drivers Information Center
- High-grade ABS plastic
- Includes harnesses
- Comprehensive instruction manual
- All necessary hardware to install an aftermarket radio
- Painted to match OEM color and finish

TURBO KITS

N NEW **P** PAINTED **DD** DOUBLE DIN

FAX YOUR ORDER: 1.800.647.8091



For specific applications please refer to the application guide on pages 181-269
For DDIN reference guide see pages 99-100 • For Multi-kit guide see pages 101-104



95-3305 GM Multi-Kit 2006-2010

- Designed specifically for the installation of double-DIN radios
- Painted matte black to match factory finish



**99-3306 Chevrolet Aveo 2007-2010
Pontiac G3 Sedan 2007-2009**

- Metra's patented, quick release snap-in ISO-mount system with custom trim ring
- Removable oversized storage pocket with built-in radio supports
- Includes parts for installation of double DIN radios or two single DIN radios



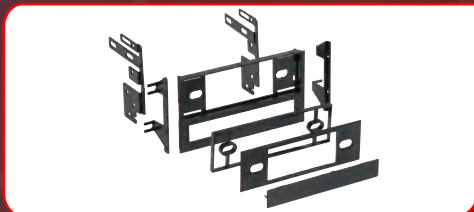
99-3307G Chevrolet Equinox 2010

- Unique design for a complex vehicle, places the radio in the factory disc location
- DIN and DDIN
- Painted gray to match factory dash



**99-3320 Pontiac Grand Am 1996-2000
Sunfire 1995-1999 • Grand Prix 1994-2003
Bonneville 1994-1999 • Firebird/Trans Am 1993-2002**

- Easy conversion from 2-shaft to DIN opening
- Includes easy-to-use instructions and all necessary hardware



99-3400 Chevrolet • Geo • Isuzu • Honda 1985-1995 Multi-Kit

- Professional Installer Series TurboKit offers quick conversion from 2-shaft to DIN
- Allows for installation of 1/4" or 1/2" DIN equalizer



**99-3410 Chevrolet Tracker 1998-2004
Geo Metro • Suzuki Swift 1993-1994
Geo Tracker • Suzuki Sidekick 1993-1998
Grand Vitara 1992-2002
XL7 2001-2002 • Aerio 2002
Esteem 1995-2003**

- Professional Installer Series TurboKit offers quick conversion from 2-shaft to DIN

N NEW **P** PAINTED **DD** DOUBLE DIN



For specific applications please refer to the application guide on pages 181-269
For DDIN reference guide see pages 99-100 • For Multi-kit guide see pages 101-104



99-3411 Geo Metro Suzuki Swift 1995-2001

- Professional Installer Series TurboKit offers quick conversion from 2-shaft to DIN
- Includes a recessed DIN opening
- Allows installation of 1/4" or 1/2" DIN equalizer



99-3412 Geo Prizm 1993-1997

- Professional Installer Series TurboKit offers quick conversion from 2-shaft to DIN



99-3413 Chevrolet Prizm Toyota Corolla 1998-2002

- Allows 2-shaft or recessed DIN installations
- Retains factory cup holder
- Accommodates 1/2" DIN equalizer



99-3900 Chevrolet • Oldsmobile Pontiac Multi-Kit 1994-2004

- Exclusive for EQ applications only
- Easy conversion from 2-shaft to DIN opening



89-30-3310 Pontiac Sunbird 1989-1994 Custom Trimplate

- Mounts aftermarket radio in factory cassette location



99-3527 Pontiac Grand Prix 2004-2008

- Holds either DIN or ISO DIN units
- Metra's patented Snap-In ISO Support System with ISO trim ring

TURBO KITS

N NEW **P** PAINTED **DD** DOUBLE DIN

FAX YOUR ORDER: 1.800.647.8091



For specific applications please refer to the application guide on pages 181-269
For DDIN reference guide see pages 99-100 • For Multi-kit guide see pages 101-104



95-3527 Pontiac Grand Prix 2004-2008

- Designed specifically for the installation of double DIN radios



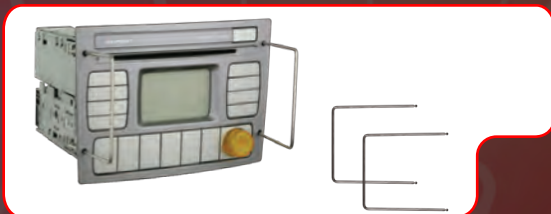
99-3528 Pontiac GTO 2004-2006

- Recessed DIN opening
- Oversized under-radio storage pocket



95-3528 Pontiac GTO 2004-2006

- Designed specifically for the installation of double DIN radios



86-3528 GTO Radio Removal Tool



99-3107G Saturn Astra 2008

- Metra's patented, Quick-Release Snap-In, ISO-mount system with custom trim ring
- Recessed DIN opening
- Painted to match gray OEM color and finish



95-3107G Saturn Astra 2008

- Designed specifically for the installation of double DIN radios
- Painted to match gray OEM color and finish



N NEW **P** PAINTED **DD** DOUBLE DIN



GM/HONDA

For specific applications please refer to the application guide on pages 181-269
For DDIN reference guide see pages 99-100 • For Multi-kit guide see pages 101-104



99-3107S Saturn Astra 2008

- Metra's patented, Quick-Release Snap-In, ISO-mount system with custom trim ring
- Recessed DIN opening
- Painted to match silver OEM color and finish

P



95-3107S Saturn Astra 2008

- Designed specifically for the installation of double DIN radios
- Painted to match silver OEM color and finish

P

DD



99-7860 Honda Civic SI 2002-2005

- Will accommodate a full recessed DIN unit with a pocket
- Fits an ISO mount radio with a pocket
- Mounts a double DIN unit

DD



99-7861 Honda Pilot 2003-2008

- Fits ISO mount radios using Metra's patented Snap-In ISO Support System
- For models without factory NAV models



95-7861 Honda Pilot 2003-2008

- Designed specifically for the installation of double DIN radios
- For models without factory NAV

DD



99-7862 Honda Accord 2003-2007

- Mounts aftermarket radio in console pocket location
- Comes complete with harness that will provide all the connections to install an aftermarket unit using factory speaker, power and ground wires

TURBO KITS

N NEW **P** PAINTED **DD** DOUBLE DIN

FAX YOUR ORDER: 1.800.647.8091



HONDA

For specific applications please refer to the application guide on pages 181-269
For DDIN reference guide see pages 99-100 • For Multi-kit guide see pages 101-104



99-7863 Honda Element 2003-2010

- Holds either DIN or ISO DIN units
- Metra's patented Snap-In ISO Support System with ISO trim ring



99-7866 Acura MDX 2000-2006

- Holds either DIN or ISO DIN units
- Metra's patented Snap-In ISO Support System with ISO trim ring



95-7866B Acura MDX 2000-2006

- Painted matte black to match factory finish

DD



99-7867 Acura RSX Type-S 2002-2006

- Metra's patented ISO quick release brackets
- Has provision for factory defroster switch
- Can also be used on non-Type-S



95-7867 Acura RSX Type-S 2002-2006

- Designed specifically for the installation of double DIN radios
- Has provision for factory defroster switch
- Can also be used on non-Type-S

DD



99-7868 Acura CL 2001-2003 TL 1999-2003

- Holds either DIN or ISO DIN units
- Metra's patented Snap-In ISO Support System with ISO trim ring

N NEW **P** PAINTED **DD** DOUBLE DIN

CALL TO ORDER: 1.800.221.0932

HONDA

For specific applications please refer to the application guide on pages 181-269
For DDIN reference guide see pages 99-100 • For Multi-kit guide see pages 101-104



99-7864 Honda Accord 2003-2007

- Replaces entire climate control panel
- Retains full functionality of the HVAC system
- Full air temperature control
- Air recirculate control
- Rear window defrost
- Vent selection the same as the factory
- A/C compressor freeze protection
- Backlit controls for night driving
- All settings recalled when car is stopped and restarted
- Controls are painted to match factory look
- Metra's patented snap in ISO support
- Recessed DIN mount system
- ISO trim ring
- Contoured to match factory dashboard
- High grade ABS plastic
- Comprehensive instruction manual
- Use with 70-7864DZ harness to allow Turbo 2 on dual zone systems

P

TURBO KITS

N NEW **P** PAINTED **DD** DOUBLE DIN

FAX YOUR ORDER: 1.800.647.8091



HONDA

For specific applications please refer to the application guide on pages 181-269
For DDIN reference guide see pages 99-100 • For Multi-kit guide see pages 101-104



95-7868B Acura CL 2001-2003 TL 1999-2003 **DD**
• Painted matte black to match factory finish



99-7869 Honda Odyssey 2005-2010 **DD**
• Metra's patented, Quick-Release Snap-In, ISO-mount system with custom trim ring
• Recessed DIN opening
• Storage pocket with built-in radio supports below the radio opening



99-7870T Honda Ridgeline 2005-2010 **P**
• Metra's patented, Quick-Release Snap-In, ISO-mount system with custom trim ring
• Recessed DIN opening
• Painted to match tan OEM color and finish



99-7870G Honda Ridgeline 2005-2010 **P**
• Metra's patented, Quick-Release Snap-In, ISO-mount system with custom trim ring
• Recessed DIN opening
• Painted to match gray OEM color and finish



95-7870T Honda Ridgeline 2005-2010 **P** **DD**
• Designed specifically for the installation of double DIN radios
• Painted to match tan OEM color and finish



95-7870G Honda Ridgeline 2005-2010 **P** **DD**
• Designed specifically for the installation of double DIN radios
• Painted to match gray OEM color and finish

N NEW **P** PAINTED **DD** DOUBLE DIN

CALL TO ORDER: 1.800.221.0932

HONDA

For specific applications please refer to the application guide on pages 181-269
 For DDIN reference guide see pages 99-100 • For Multi-kit guide see pages 101-104



99-7871 Honda Civic 2007-2010

- Metra's patented, Quick-Release Snap-In, ISO-mount system with custom trim ring DIN & DDIN
- Allows retention of factory climate controls, air vents, hazard button and passenger airbag light in their original location
- Recessed DIN opening
- Painted matte black

P

DD



99-7871T Honda Civic 2007-2010

- Painted to match factory taupe color
- Same features as 99-7871

P

DD



99-7872 Honda Fit 2007-2010

- Custom design allows retention of factory climate controls in their original position and passenger airbag light
- Metra's patented, Quick-Release Snap-In, ISO-mount system with custom trim ring DIN & DDIN
- Painted matte black

P

DD



99-7873 Honda CRV 2007-2010

- Metra's patented, Quick Release Snap-In, ISO mount system with custom trim ring
- Includes parts for installation of double DIN radios or two single DIN radios

DD



99-7874 Honda Accord 2008-2010 (without dual zone climate controls)

- Custom design allows retention of factory climate controls, air vents, hazard button and passenger airbag light in their original location
- Painted matte black to match factory color and texture
- Metra's patented, Quick-Release Snap-In, ISO-mount system with custom trim ring DIN & DDIN

P

DD



99-7874T Honda Accord 2008-2010 (without dual zone climate controls)

- Painted taupe to match factory color and texture
- Same features as 99-7874

P

DD

TURBO KITS

N NEW **P** PAINTED **DD** DOUBLE DIN

FAX YOUR ORDER: 1.800.647.8091



HONDA

For specific applications please refer to the application guide on pages 181-269
For DDIN reference guide see pages 99-100 • For Multi-kit guide see pages 101-104



99-7875 Honda Accord 2008-2010 (with dual zone climate controls)

- Custom design allows retention of factory climate controls, air vents, hazard button and passenger airbag light in their original location
- Painted matte black to match factory color and texture
- Metra's patented, Quick-Release Snap-In, ISO-mount system with custom trim ring

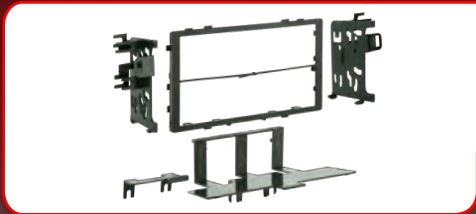
P
DD



99-7875T Honda Accord 2008-2010 (with dual zone climate controls)

- Painted to match the factory taupe color
- Same features as 99-7875

P
DD



95-7801 Honda • Acura Double-DIN Multi-Kit 1990-2004

- Can accommodate either a double-DIN radio
- Rear support bracket is included

DD



99-7877S Honda Fit 2009-up

- DIN/DDIN
- Painted silver to match factory finish

N
P
DD



99-7878B Honda Insight 2010-up

- DIN/DDIN
- Painted matte black to match factory finish

N
P
DD



99-7888 Honda Accord 1990-1993 Odyssey 1995-1998 • Prelude 1988-1991 Acura TL 1996-1998 • Vigor 1992-1994 Integra, Legend 1990-2001 Isuzu Oasis 1996-1998

- Professional Installer Series TurboKit offers quick conversion from 2-shaft to DIN
- Includes 1/4" or 1/2" DIN equalizer provision with side supports
- Factory-style rear support bracket

N NEW **P** PAINTED **DD** DOUBLE DIN

CALL TO ORDER: 1.800.221.0932

HONDA

For specific applications please refer to the application guide on pages 181-269
 For DDIN reference guide see pages 99-100 • For Multi-kit guide see pages 101-104



99-7889 Honda Prelude 1992-1996

- Professional Installer Series TurboKit offers quick conversion from 2-shaft to DIN
- Includes 1/4" or 1/2" DIN equalizer provision with side supports
- Factory-style rear support bracket



99-7890 Honda Accord 1990-1997

Odyssey 1995-1998 • Acura CL 1997-1999

Acura TL 1996-1998 • Vigor 1991-1996

Integra • Legend 1990-2001

Isuzu Oasis 1996-1998

- Includes 1/4" or 1/2" DIN equalizer provision with side supports
- Factory-style rear support bracket



99-7891 Honda Civic Custom Kit 1996-1998

- Accommodates DIN and 2-shaft radios
- Retains the factory pocket



99-7892 Honda Accord 1990-1997

Odyssey 1995-1998 • Acura CL 1997-1999

Acura TL 1996-1998 • Vigor 1991-1996

Integra • Legend 1990-2001

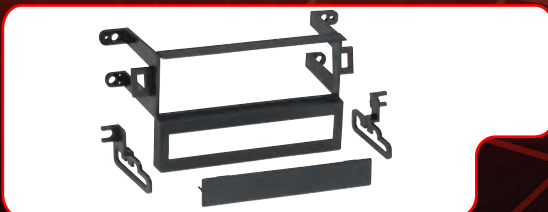
Isuzu Oasis 1996-1998

- Accommodates DIN, ISO DIN, and 2-shaft radios
- Comes complete with built-in pocket that holds two CD jewel cases



99-7893 Honda CRV Prelude 1997-2001

- Pocket holds two CD jewel cases
- Easy conversion from 2-shaft to DIN



99-7894 Honda Accord 1998-2002

- Includes recessed DIN opening with the option to retain the factory pocket
- Allows the installation of a 1/4" or 1/2" DIN equalizer
- Includes EQ / factory pocket retention supports
- Equalizer trimplate included for times when no EQ is installed

TURBO KITS

N NEW **P** PAINTED **DD** DOUBLE DIN

FAX YOUR ORDER: 1.800.647.8091



HONDA/KIA

For specific applications please refer to the application guide on pages 181-269
For DDIN reference guide see pages 99-100 • For Multi-kit guide see pages 101-104



99-7895 Honda Accord with Pocket 1998-2002

- Pocket holds three CD jewel cases



95-7895 Honda Accord with Pocket 1998-2002

DD

- Designed specifically for the installation of double DIN radios



99-7896 Honda Civic 1999-2000

- Professional Installer Series TurboKit offers quick conversion from 2-shaft to DIN
- Pocket holds two CD jewel cases



99-7897 Honda Civic • Civic Hybrid 2001-2005

- Matches the factory dash contour perfectly
- Allows the installation of ISO DIN or DIN mount radios



99-7898 Honda • Acura Multi-Kit 1989-2006

- Provides pocket with mounting of a DIN radio or an ISO DIN radio
- Includes rear support bracket



95-7899 Honda Civic (Excludes Si & 2005 SE Models) 2001-2005

DD

- Allows for two stacked ISO DIN radios or a double-DIN radio using the factory brackets

N NEW **P** PAINTED **DD** DOUBLE DIN

CALL TO ORDER: 1.800.221.0932



HONDA/HYUNDAI/KIA

For specific applications please refer to the application guide on pages 181-269
For DDIN reference guide see pages 99-100 • For Multi-kit guide see pages 101-104

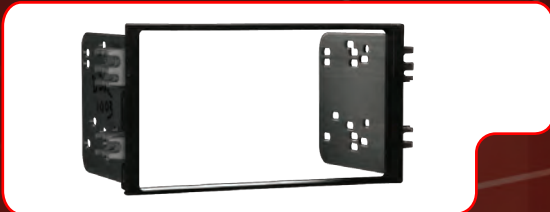


99-7899 Honda Civic (Excludes Si & 2005 SE Models) 2001-2005

- For ISO DIN and DIN mount radios



99-1003 Kia Sephia 1995-2003 Sportage 1995-2003 • Rio 2001 • Spectra 2000-2001



95-1003 Kia Sephia 1995-2003 Sportage 1995-2003 • Rio 2001 • Spectra 2000-2001

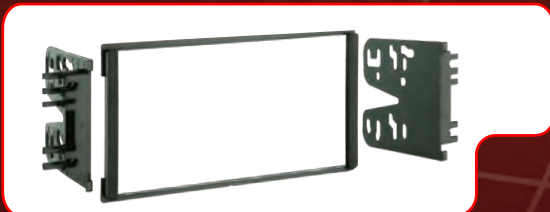
- Designed specifically for the installation of double DIN radios

DD



99-1005 Kia Sedona 2002-2005 Kia Spectra 2002-2004

- Provides pocket with recessed mounting of a DIN radio or an ISO DIN radio using Metra's patented ISO Quick-Release Brackets
- Comprehensive instruction manual
- All necessary hardware for easy installation



95-1005 Kia Sedona 2002-2005 • Spectra 2002-2004 • Rio 2002-2005 • Sorrento LX (excluding sport packages) 2003-2005

- Designed specifically for the installation of double-DIN radios

DD



99-1006 Kia Sorento EX 2003-2006

- Recessed DIN radio opening ISO mount radio compatible using snap-in ISO radio mounts
- Comes complete with built-in under-radio pocket

TURBO KITS

N NEW **P** PAINTED **DD** DOUBLE DIN

FAX YOUR ORDER: 1.800.647.8091



HYUNDAI/KIA

For specific applications please refer to the application guide on pages 181-269
For DDIN reference guide see pages 99-100 • For Multi-kit guide see pages 101-104



99-1007 Kia Rio 2002-2005

- Recessed DIN radio opening
- ISO mount radio compatible using Snap-In ISO radio mounts
- Comes complete with built-in under-radio pocket



99-1008 Kia Sorento LX 2003-2006

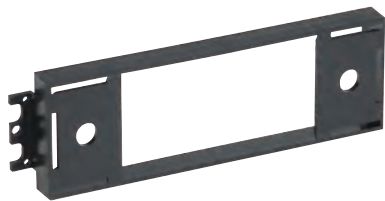
Kia Spectra 2004-2006

- Recessed DIN radio opening
- ISO mount radio compatible using snap-in ISO radio mounts
- Comes complete with built-in under-radio pocket



99-7301 Hyundai Multi-Kit 1986-1999

- Professional Installer Series TurboKit offers quick conversion from 2-shaft to DIN



99-7308 Hyundai Accent 1995-1999

Elantra 1996-2000 • Accent 2002-2005

Sonata 1995-1998 • Tiburon 1997-2002

- Professional Installer Series TurboKit offers quick conversion from 2-shaft to DIN



99-7309 Hyundai Elantra 1996-2000

Sonata 1995-2001 • Tiburon 1997-2002

Santa Fe 2001-2006

- Professional Installer Series TurboKit designed for Hyundai models with 4" dash openings
- For DIN mount radio applications
- Pocket holds CD jewel cases



95-7309 Hyundai Elantra 1996-2000

Sonata 1995-2001 • Tiburon 1997-2002

Santa Fe 2001-2006

- Designed specifically for the installation of double-DIN radios



NEW



PAINTED



DOUBLE DIN

TURBO KITS



HYUNDAI/KIA

For specific applications please refer to the application guide on pages 181-269
For DDIN reference guide see pages 99-100 • For Multi-kit guide see pages 101-104



99-7310 Hyundai Accent 2000-2001

- Professional Installer Series TurboKit fits ISO DIN radios



99-7311 Hyundai Sonata 1999-2001

- Professional Installer Series TurboKit for ISO mount applications only
- Contoured to match factory dashboard



99-7312 Hyundai Tiburon 1997-2002

- Professional Installer Series TurboKit for ISO mount applications only
- Contoured to match factory dashboard



99-7313 Hyundai Elantra 2001-2006 Sonata 2002-2005 • Tiburon 2003-2008 Kia Optima 2001-2006

- Professional Installer Series TurboKit for DIN mount radio applications only
- Integrally designed pocket holds CD jewel cases



95-7313 Hyundai Elantra 2001-2006 Sonata 2002-2005 • Tiburon 2003-2008 Kia Optima 2001-2006

- Designed specifically for the installation of double-DIN radios

DD



99-7315 Hyundai Tucson 2005-2009

- Recessed DIN opening
- Metra's patented Snap-In ISO Support System
- Comes with oversized under-radio storage pocket

TURBO KITS

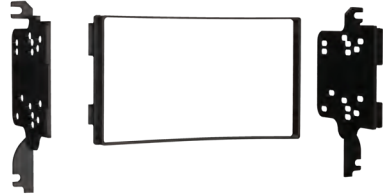
N NEW **P** PAINTED **DD** DOUBLE DIN

FAX YOUR ORDER: 1.800.647.8091



HYUNDAI/KIA

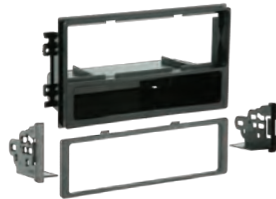
For specific applications please refer to the application guide on pages 181-269
For DDIN reference guide see pages 99-100 • For Multi-kit guide see pages 101-104



95-7315 Hyundai Tucson 2005-2009

- Designed specifically for the installation of double-DIN radios

DD



99-7316 Hyundai XG 300 2001 XG 350 2002-2005

- Metra's patented, Quick-Release Snap-In, ISO-mount system with custom trim ring
- Recessed DIN opening HYUNDAI/KIA



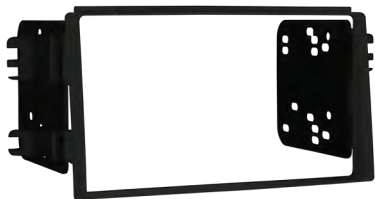
99-7317 Kia Sportage 2005-2006

- Recessed DIN opening
- Storage pocket with built-in radio supports



99-7318 Kia Spectra 2005-2006

- Metra's patented, Quick-Release Snap-In, ISO-mount system with custom trim ring
- Storage pocket with built-in radio supports below the radio opening
- High-grade ABS plastic - contoured and textured to compliment factory dash



95-7318 Kia Spectra 2005-2006

- Designed specifically for the installation of double-DIN radios

DD



99-7319 Kia Amanti 2004-2006

- Metra's patented, Quick-Release Snap-In, ISO-mount system with custom trim ring
- Storage pocket with built-in radio supports below the radio opening

N NEW **P** PAINTED **DD** DOUBLE DIN

CALL TO ORDER: 1.800.221.0932



HYUNDAI/KIA

For specific applications please refer to the application guide on pages 181-269
For DDIN reference guide see pages 99-100 • For Multi-kit guide see pages 101-104



99-7320 Hyundai Sonata 2006-2008

- Metra's patented, Quick-Release Snap-In, ISO-mount system with custom trim ring
- Storage pocket



95-7320 Hyundai Sonata 2006-2008

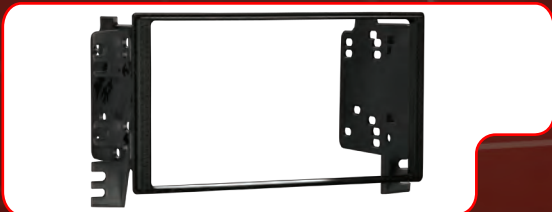
- Includes parts for installation of double DIN radios

DD



99-7321 Kia Rio • Hyundai Accent 2006-2010

- Metra's patented, Quick-Release Snap-In, ISO-mount system with custom trim ring
- Storage pocket with built-in radio supports below the radio opening



95-7321 Kia Rio • Hyundai Accent 2006-2010

- Designed specifically for the installation of double-DIN radios

DD



99-7322 Hyundai Azera 2006-2010

- Metra's patented, Quick Release Snap-In, ISO mount system with custom trim ring
- Recessed DIN opening



95-7322 Hyundai Azera 2006-2010

- Includes parts for installation of double DIN radios
- Contoured and textured to match factory dash

DD

TURBO KITS

N NEW **P** PAINTED **DD** DOUBLE DIN

FAX YOUR ORDER: 1.800.647.8091



HYUNDAI/KIA

For specific applications please refer to the application guide on pages 181-269
For DDIN reference guide see pages 99-100 • For Multi-kit guide see pages 101-104

TURBO KITS



99-7323 Hyundai Entourage 2007-2010 Kia Sedona 2006-2008

- Metra's patented, Quick Release Snap-In, ISO mount system with custom trim ring
- Built in oversized storage pocket with built in radio supports
- Recessed DIN opening



95-7323 Hyundai Entourage 2007-2008 Kia Sedona 2006-2010

DD

- Designed for installation of double DIN



99-7324 Kia Optima 2006-2010

- Built in oversized storage pocket with built in radio supports
- Metra's patented, Quick Release Snap-In, ISO mount system with custom trim ring
- Recessed DIN opening



95-7324 Kia Optima 2006-2010

DD

- Designed for installation of double DIN or two single DIN radios



99-7325 Hyundai Santa Fe 2007-2010

- Excludes 2010 NAV models
- Metra's patented, Quick Release Snap-In, ISO mount system with custom trim ring



95-7325 Hyundai Santa Fe 2007-2010

DD

- Excludes 2010 NAV models
- Contoured to match factory dash
- High grade ABS plastic
- Includes parts for installation of double DIN radios

N

NEW

P

PAINTED

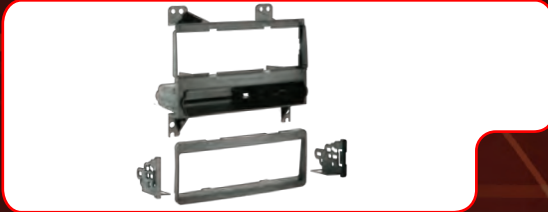
DD

DOUBLE DIN



HYUNDAI/KIA

For specific applications please refer to the application guide on pages 181-269
For DDIN reference guide see pages 99-100 • For Multi-kit guide see pages 101-104



99-7326 Hyundai Elantra 2007-2010

- Metra's patented, Quick Release Snap-In, ISO mount system with custom trim ring
- Built in oversized storage pocket with built in radio supports
- Recessed DIN opening



95-7326 Hyundai Elantra 2007-2010

- Includes parts for installation of double DIN radios

DD



99-7332 Hyundai Elantra 2007-2010 (for factory radio delete option)

- Metra's patented, Quick Release Snap-In, ISO mount system with custom trim ring
- Built in oversized storage pocket with built in radio supports



95-7332 Hyundai Elantra 2007-2010 (for factory radio delete option)

- Includes parts for installation of double DIN radios

DD



99-7328 Kia Sorrento 2007-2009

- Built in oversized storage pocket with built in radio supports
- Metra's patented, Quick Release Snap-In, ISO mount system with custom trim ring
- Recessed DIN opening



95-7328 Kia Sorrento 2007-2010

- Designed for installation of double DIN
- Contoured and textured to match factory dash

DD

TURBO KITS

N NEW **P** PAINTED **DD** DOUBLE DIN

FAX YOUR ORDER: 1.800.647.8091



HYUNDAI/KIA

For specific applications please refer to the application guide on pages 181-269
For DDIN reference guide see pages 99-100 • For Multi-kit guide see pages 101-104



99-7329 Kia Rondo 2007-2009

- Built in oversized storage pocket with built in radio supports
- Metra's patented, Quick Release Snap-In, ISO mount system with custom trim ring
- Recessed DIN opening



95-7329 Kia Rondo 2007-2009

- Designed for installation of double DIN
- Contoured and textured to match factory dash

DD



99-7330 Kia Spectra 2007-2009

- Built in oversized storage pocket with built in radio supports
- Metra's patented, Quick Release Snap-In, ISO mount system with custom trim ring



95-7330 Kia Spectra 2007-2009

- Designed for installation of double DIN

DD



99-7331 Kia Amanti 2007-2009

- Built in oversized storage pocket with built in radio supports
- Metra's patented, Quick Release Snap-In, ISO mount system with custom trim ring



95-7331 Kia Amanti 2007-2009

- Designed for installation of double DIN

DD

N

NEW

P

PAINTED

DD

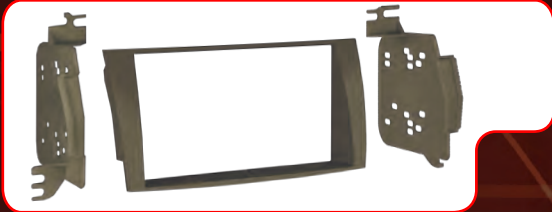
DOUBLE DIN

TURBO KITS



HYUNDAI/KIA

For specific applications please refer to the application guide on pages 181-269
For DDIN reference guide see pages 99-100 • For Multi-kit guide see pages 101-104

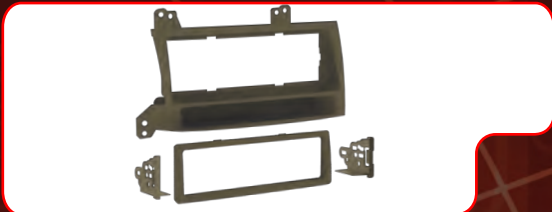


95-7333 Hyundai Sonata 2009-2010

- Designed specifically for the installation of double DIN radios
- Painted to match bronze OEM color and finish

P

DD



99-7333 Hyundai Sonata 2009-2010

- Metra's patented, Quick-Release Snap-In, ISO-mount system with custom trim ring
- Recessed DIN opening
- Painted to match bronze OEM color and finish

P



99-7334 Kia Borrego 2009

- Metra's patented snap-in ISO mount system for DIN radios
- Designed for both DIN and DDIN installs

N

P

DD



99-7335S Hyundai Veracruz 2007-2009

- Automatic climate control only
- Painted silver to match factory dash
- Designed for both DIN and Double DIN radios

N

P

DD



99-7336S Hyundai Genesis Coupe 2010

- For use with automatic climate control
- Painted silver to match factory dash

N

P



95-7336S Hyundai Genesis Coupe 2010

- For use with automatic climate control
- Painted silver to match factory dash
- Double DIN radio provision

N

P

DD

TURBO KITS

N NEW **P** PAINTED **DD** DOUBLE DIN

FAX YOUR ORDER: 1.800.647.8091



HYUNDAI/KIA/MAZDA

For specific applications please refer to the application guide on pages 181-269
For DDIN reference guide see pages 99-100 • For Multi-kit guide see pages 101-104



99-7337B Kia Soul 2010

- Painted a scratch resistant matte black to match factory dash
- Double DIN radio provision

N
P



95-7337B Kia Soul 2010

- Painted a scratch resistant matte black to match factory dash
- Double DIN radio provision

N
P
DD



99-7339B Hyundai Genesis Coupe 2010

- For use with manual climate control
- Painted black to match factory dash
- Also available in silver **99-7339S**

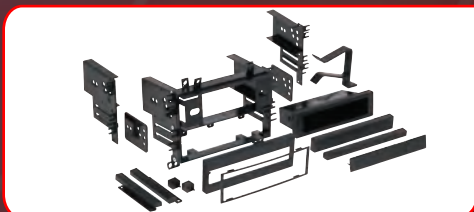
N
P



95-7339B Hyundai Genesis Coupe 2010

- For use with manual climate control
- Painted black to match factory dash
- Double DIN radio provision
- Also available in silver **95-7339S**

N
P
DD



99-7501 Mazda Multi-Kit 1984-1995 (Sub-dash mount)

- Offers quick conversion from 2-shaft to DIN
- Specially designed for ISO mount radios with ISO trim ring
- OEM-style pocket included
- Allows installation of 1/4" or 1/2" DIN equalizer



99-7500 Mazda Multi-Kit 1986-1995 (Dash bezel mount)

- Offers quick conversion from 2-shaft to DIN
- Allows installation of 1/4" or 1/2" DIN equalizer

N NEW **P** PAINTED **DD** DOUBLE DIN

CALL TO ORDER: 1.800.221.0932

MAZDA

For specific applications please refer to the application guide on pages 181-269
 For DDIN reference guide see pages 99-100 • For Multi-kit guide see pages 101-104



99-7502 Mazda MPV 2000-2006

- Recessed DIN radio opening
- ISO mount radio compatible using snap-in ISO radio mounts
- Comes complete with built-in under radio pocket



95-7504 Mazda 3 2004-2009

- Display replacement pocket included
- Designed specifically for installation of double DIN radios

DD



99-7504 Mazda 3 2004-2009

- Factory display replacement pocket packaged with kit
- ISO mounts with Metra's patented Quick-Release brackets include a custom trimplate



99-7505 Mazda Multi-Kit 2003-2006

- Recessed DIN opening
- Double-DIN and/or two ISO mount radio trim included
- Contoured to match factory dash

DD



99-7506 Mazda MX-5 Miata 2006-2009

- Designed specifically for DIN & DDIN
- Metra's patented Quick-Release, Snap-In, ISO-mount system with custom trim ring
- Allows retention of factory climate controls in their original location
- Painted matte black

P

DD



99-7508 Mazda CX7 2007-2009

- Metra's patented Quick Release Snap-In, ISO-mount system with custom trim ring
- Removable oversized storage pocket with built in radio supports DIN & DDIN

P

DD

TURBO KITS

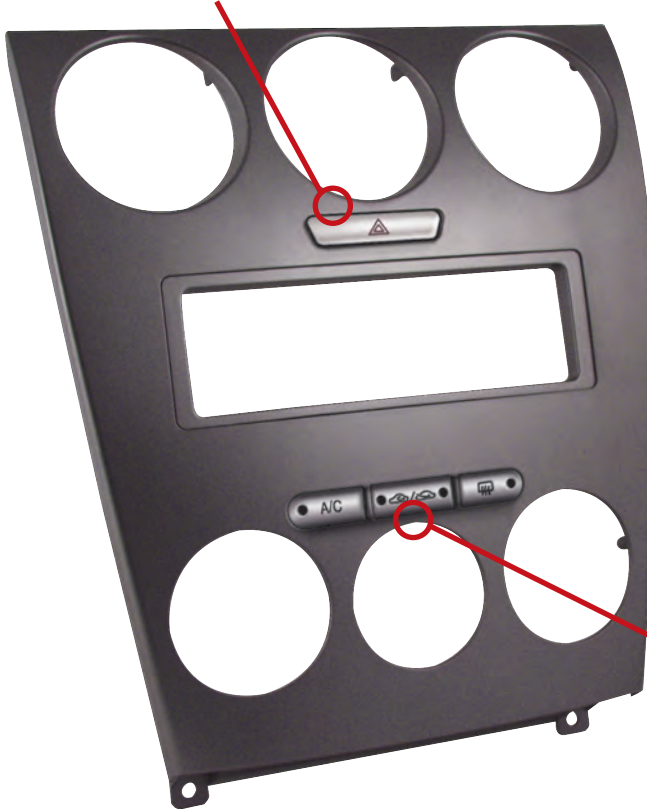
N NEW **P** PAINTED **DD** DOUBLE DIN

FAX YOUR ORDER: 1.800.647.8091

MAZDA

For specific applications please refer to the application guide on pages 181-269
For DDIN reference guide see pages 99-100 • For Multi-kit guide see pages 101-104

Incorporates factory style
hazard button



Replaces entire climate
control panel and
retains full functionality
of the HVAC system

99-7503 Turbo2 Kit Mazda 6 2003-2005

- Recessed DIN opening
- Metra's patented Snap-In ISO Mount Support System
- ISO trim ring included
- Built-in legs extend rearward from bottom of DIN opening for added rear support
- Molded and painted silver to match factory dashboard texture
- Retains full functionality of the factory HVAC system
- Air recirculate control
- Rear window defrost
- A/C compressor freeze protection
- Settings are recalled when car is stopped and restarted
- All controls are backlit for easy viewing
- Incorporates factory-style hazard lights switch
- No cutting or splicing the factory wiring
- OEM-style switches retain the factory look and feel

P

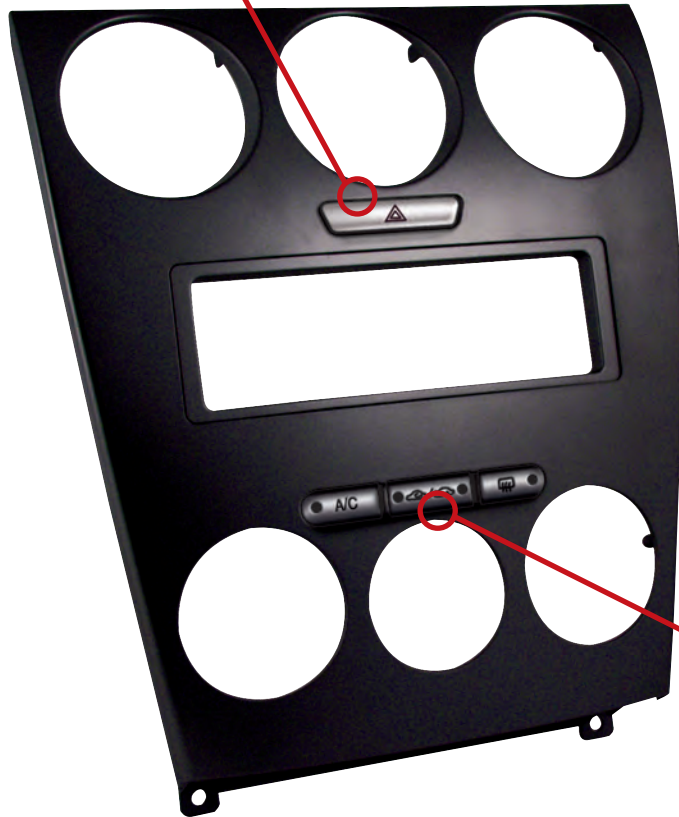
N NEW **P** PAINTED **DD** DOUBLE DIN

CALL TO ORDER: 1.800.221.0932



For specific applications please refer to the application guide on pages 181-269
For DDIN reference guide see pages 99-100 • For Multi-kit guide see pages 101-104

Incorporates factory style
hazard button



Replaces entire climate
control panel and
retains full functionality
of the HVAC system

99-7507 Turbo2 Kit Mazda 6 2006-2008

- Recessed DIN opening
- Metra's patented Snap-In ISO Mount Support System
- ISO trim ring included
- Built-in legs extend rearward from bottom of DIN opening for added rear support
- Molded and painted matte black to match factory dashboard texture
- Retains full functionality of the factory HVAC system
- Air recirculate control
- Rear window defrost
- A/C compressor freeze protection
- Settings are recalled when car is stopped and restarted
- All controls are backlit for easy viewing
- Incorporates factory-style hazard lights switch
- No cutting or splicing the factory wiring
- OEM-style switches retain the factory look and feel

P

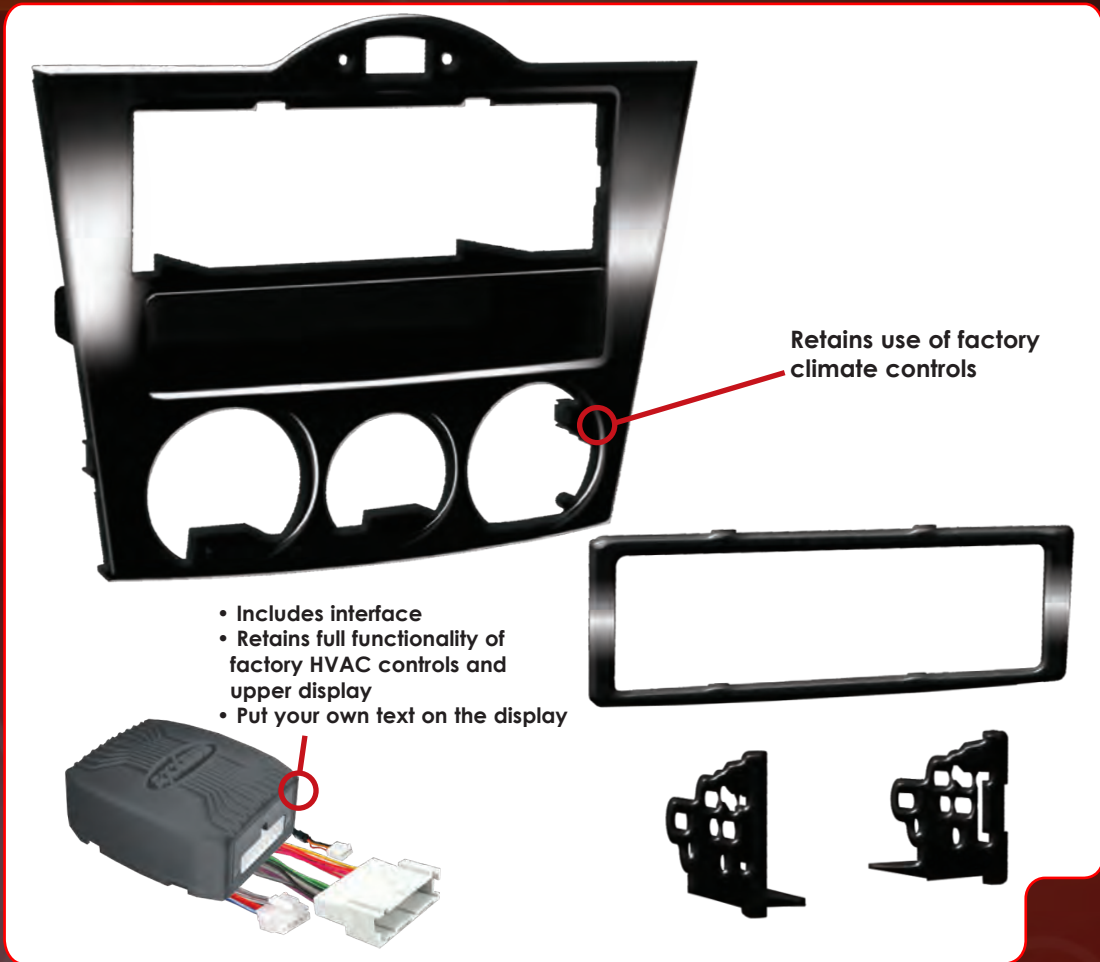
TURBO KITS

N NEW **P** PAINTED **DD** DOUBLE DIN

FAX YOUR ORDER: 1.800.647.8091

MAZDA

For specific applications please refer to the application guide on pages 181-269
For DDIN reference guide see pages 99-100 • For Multi-kit guide see pages 101-104



- Includes interface
- Retains full functionality of factory HVAC controls and upper display
- Put your own text on the display

Retains use of factory climate controls

99-7510HG Mazda RX8 2004-2008

- Designed specifically for the installation of a single DIN radio
- includes storage pocket
- ISO mounts with Metra's patented Quick-Release brackets include a custom trimplate
- Provides a recessed DIN mount with a molded pocket
- Contoured and textured to match factory dash
- Painted to match high gloss black factory color and texture
- Custom design allows retention of factory climate controls in their original location
- Custom design allows retention of factory hazard button in it's original location
- Comprehensive instruction manual including step by step disassembly and assembly

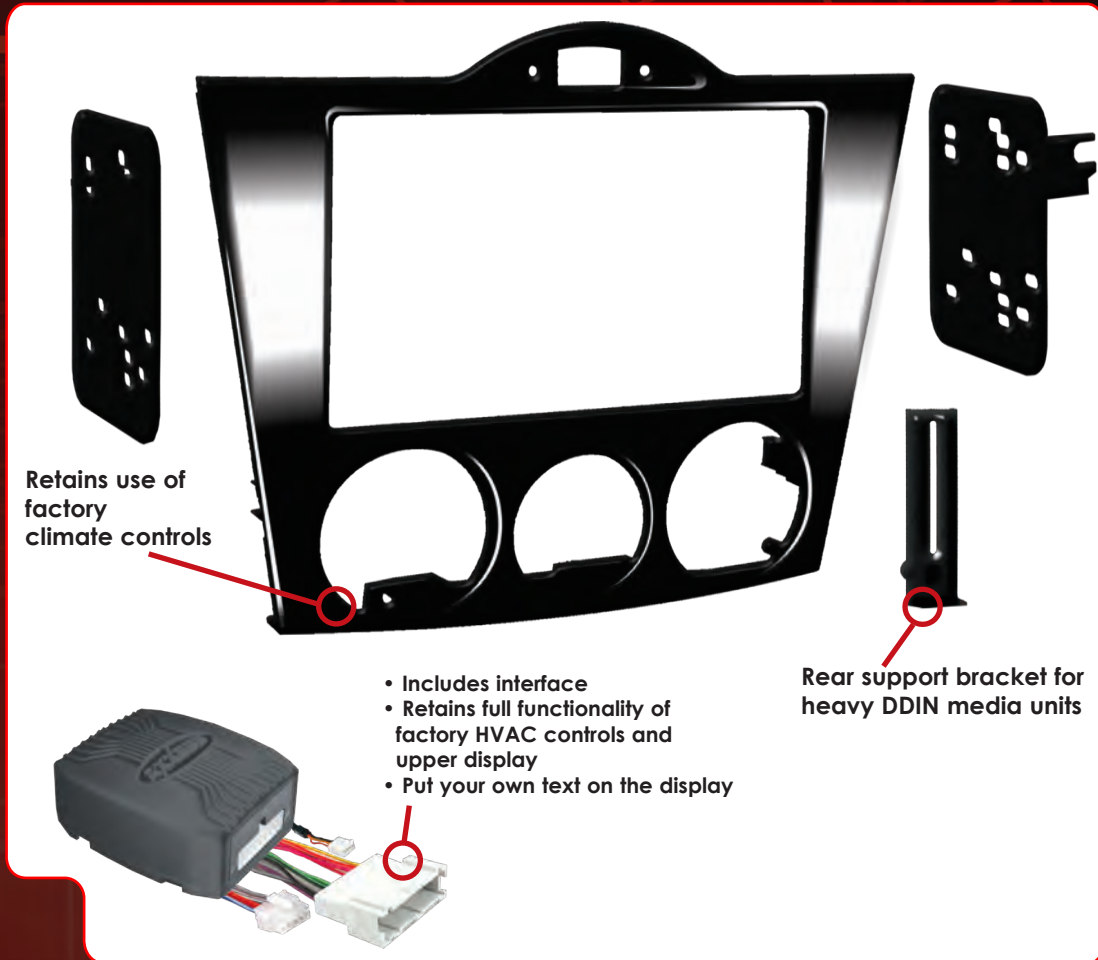
P

N NEW **P** PAINTED **DD** DOUBLE DIN

CALL TO ORDER: 1.800.221.0932

MAZDA

For specific applications please refer to the application guide on pages 181-269
For DDIN reference guide see pages 99-100 • For Multi-kit guide see pages 101-104



95-7510HG Mazda RX8 2004-2008

- Designed specifically for installation of double-DIN radios or two single-DIN radios
- ISO mounts with Metra's patented Quick-Release brackets include a custom trimplate
- Provides a recessed DIN mount with a molded pocket
- Contoured and textured to match factory dash
- Painted to match high gloss black factory color and texture
- Custom design allows retention of factory climate controls in their original location
- Custom design allows retention of factory hazard button in it's original location
- Comprehensive instruction manual including step by step disassembly and assembly

P

DD

TURBO KITS

N NEW **P** PAINTED **DD** DOUBLE DIN

FAX YOUR ORDER: 1.800.647.8091

MAZDA

For specific applications please refer to the application guide on pages 181-269
 For DDIN reference guide see pages 99-100 • For Multi-kit guide see pages 101-104



- Includes interface
- Retains full functionality of factory HVAC controls and upper display
- Put your own text on the display

Retains use of factory climate controls

99-7510 Mazda RX8 2004-2008

- Designed specifically for the installation of a single DIN radio
- includes storage pocket
- ISO mounts with Metra's patented Quick-Release brackets include a custom trimplate
- Provides a recessed DIN mount with a molded pocket
- Contoured and textured to match factory dash
- Painted to match matte black factory color and texture
- Custom design allows retention of factory climate controls in their original location
- Custom design allows retention of factory hazard button in it's original location
- Comprehensive instruction manual including step by step disassembly and assembly

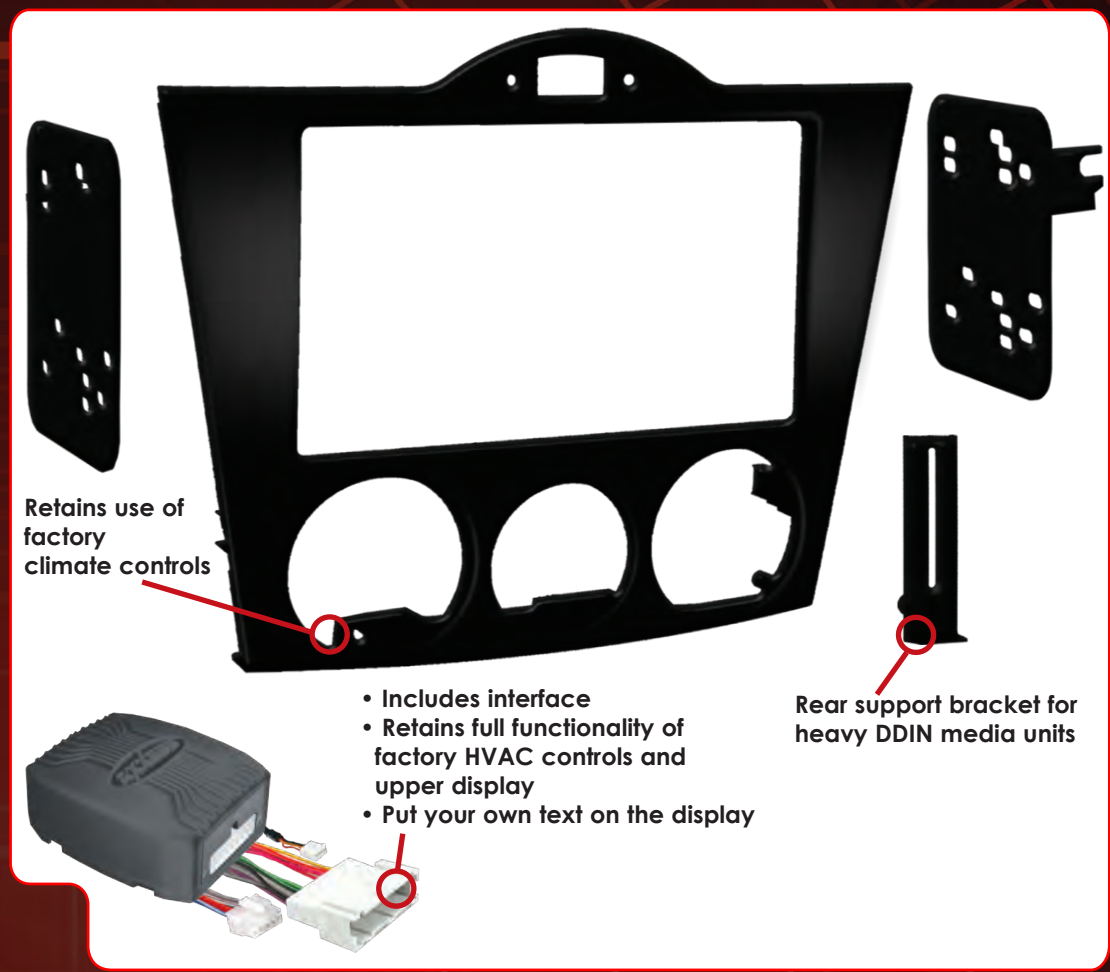
P

N NEW **P** PAINTED **DD** DOUBLE DIN

CALL TO ORDER: 1.800.221.0932

MAZDA

For specific applications please refer to the application guide on pages 181-269
 For DDIN reference guide see pages 99-100 • For Multi-kit guide see pages 101-104



Retains use of factory climate controls

- Includes interface
- Retains full functionality of factory HVAC controls and upper display
- Put your own text on the display

Rear support bracket for heavy DDIN media units

95-7510 Mazda RX8 2004-2008

- Designed specifically for installation of double-DIN radios
- ISO mounts with Metra's patented Quick-Release brackets include a custom trimplate
- Contoured and textured to match factory dash
- Painted to match matte black factory color and texture
- Custom design allows retention of factory climate controls in their original location
- Custom design allows retention of factory hazard button in it's original location
- Comprehensive instruction manual including step by step disassembly and assembly

P
DD

TURBO KITS

N NEW **P** PAINTED **DD** DOUBLE DIN

FAX YOUR ORDER: 1.800.647.8091

MAZDA

For specific applications please refer to the application guide on pages 181-269
 For DDIN reference guide see pages 99-100 • For Multi-kit guide see pages 101-104



99-7509 Mazda 5 2006-2010

- Metra's patented Quick-Release, Snap-In, ISO-mount system with custom trim ring
- Painted silver, contoured and textured to compliment factory dash
- DIN & DDIN

P

DD



98-7599 Mazda TurboPocket

- Trim ring blends the pocket to the dash for a factory-installed look



99-7511S Mazda 6 2009

- Includes parts for installation of double DIN
- Contoured and textured to match factory dash
- Painted silver to match OEM factory finish

N

P

DD



99-7514B MAZDA 3 2010

- For DIN and DDIN
- Painted matte black to match dash

DD



99-7515B MAZDA RX8 2009-2010

- For both DIN and DDIN
- Painted matte black to match factory dash

DD



99-7515HG MAZDA RX8 2009-2010

- For both DIN and DDIN
- Painted high gloss to match factory dash

DD

N NEW **P** PAINTED **DD** DOUBLE DIN

CALL TO ORDER: 1.800.221.0932



MAZDA/MITSUBISHI

For specific applications please refer to the application guide on pages 181-269
For DDIN reference guide see pages 99-100 • For Multi-kit guide see pages 101-104



99-7516B Mazda CX9 2007-2009

- Painted a scratch resistant matte black to match factory dash
- Double DIN radio provision

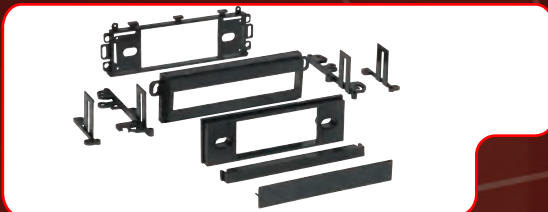
DD



99-7518B Mazda 2 2007-UP

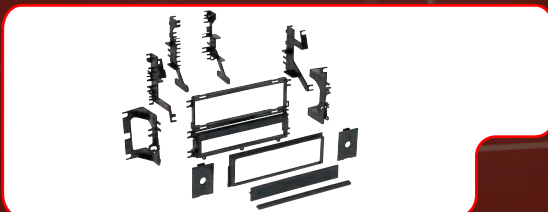
- DIN/DDIN
- Painted matte black to match factory finish

DD



99-7000 Mitsubishi Multi-Kit 1985-1995

- Includes side supports and quick conversion from 2-shaft to DIN
- Includes a snap-in center bar for use when replacing factory double-DIN radio



99-7001 Mitsubishi Multi-Kit 1990-2005

- Comes with half-DIN EQ provision



99-7006 Mitsubishi Eclipse Eagle Talon 1995-1999

- Quick conversion from 2-shaft to DIN



99-7007 Mitsubishi Eclipse Montero Sport 2000-2005

- Recessed DIN opening
- Mounts through the dash for a custom flush look

TURBO KITS

N NEW **P** PAINTED **DD** DOUBLE DIN

FAX YOUR ORDER: 1.800.647.8091

MITSUBISHI

For specific applications please refer to the application guide on pages 181-269
 For DDIN reference guide see pages 99-100 • For Multi-kit guide see pages 101-104



99-7008 Mitsubishi Outlander 2003-2006

- Recessed DIN radio opening
- ISO mount radio compatible using snap-in ISO radio mounts
- Comes complete with built-in under radio pocket



99-7009 Mitsubishi Endeavor 2004-2010

- Metra's patented Snap-In ISO Support System
- Recessed DIN mount
- Replaces factory pocket below radio
- ISO trim ring



98-8999 Mitsubishi • Subaru • Volkswagen Under-Radio Pocket

- Allows a DIN or ISO mount radio installation in a double-DIN opening
- Fits under radio and matches factory opening perfectly



99-7011 Mitsubishi Lancer 2008-2010

- Metra's patented quick release snap-in, ISO-mount system with custom trim ring
- Removable oversized storage pocket with built-in radio supports
- Allows retention of factory climate controls in their original location
- DIN & DDIN

P
DD



99-7010 Mitsubishi Eclipse 2006-2010

- Metra's patented quick release snap-in, ISO-mount system with custom trim ring
- Removable oversized storage pocket with built-in radio supports
- Allows retention of factory climate controls in their original location
- DIN & DDIN

P
DD



99-7012 Mitsubishi Galant 2004-2010 (with auto climate controls)

- Metra's patented quick release snap-in, ISO-mount system with custom trim ring
- Retains factory hazard button, passenger seatbelt and passenger airbag status lights in their original location
- DIN & DDIN

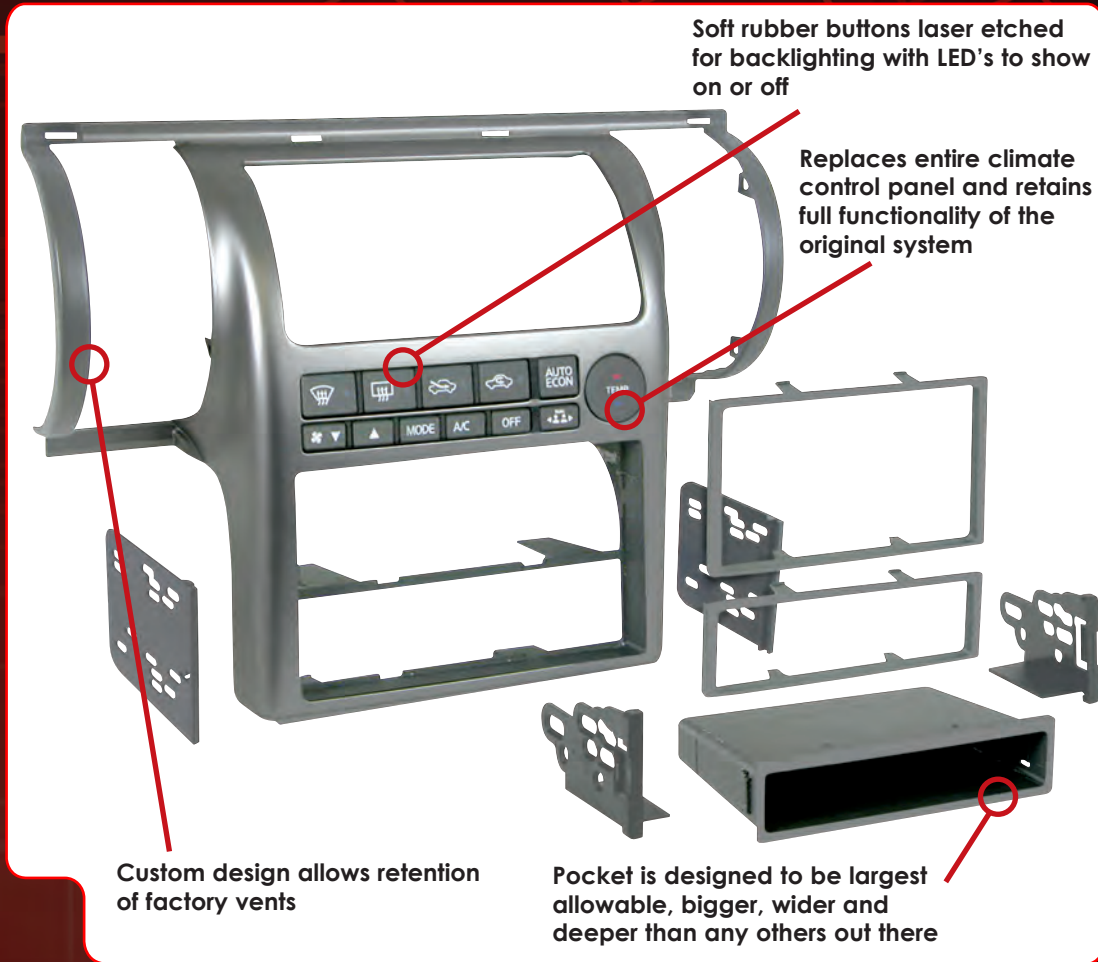
DD

N NEW **P** PAINTED **DD** DOUBLE DIN

CALL TO ORDER: 1.800.221.0932

INFINITI

For specific applications please refer to the application guide on pages 181-269
 For DDIN reference guide see pages 99-100 • For Multi-kit guide see pages 101-104



99-7604 Infiniti G35 2003-2004

- Replaces entire climate control panel
- Retains full functionality of the HVAC system
- Custom design allows retention of the factory air vents in their original location
- Recessed DIN opening
- Metra's patented Snap-In ISO Support System
- Double-DIN radio trim included

- Contoured to match factory dash
- Comes with oversized storage pocket
- High-grade ABS plastic
- Comprehensive instruction manual
- All necessary hardware included for easy installation
- Painted silver to match OEM color and finish

P
DD

99-7604T Infiniti G35 2003-2004



99-7604B Infiniti G35 2003-2004



N NEW **P** PAINTED **DD** DOUBLE DIN

FAX YOUR ORDER: 1.800.647.8091

TURBO KITS

INFINITI

For specific applications please refer to the application guide on pages 181-269
 For DDIN reference guide see pages 99-100 • For Multi-kit guide see pages 101-104

Soft rubber buttons laser etched for backlighting with LED's to show on or off

Replaces entire climate control panel and retains full functionality of the original system



Brushed aluminum with chrome edges to match factory

99-7605A Infiniti G35 Sedan 2005-2006 Coupe 2005-2007

- Now with a brushed aluminum finish to match factory finish
- Replaces entire climate control panel
- Retains full functionality of the HVAC system
- Custom design allows retention of the factory air vents in their original location
- Recessed DIN opening
- ISO mount only
- Painted silver and contoured to match factory dash
- Comes with oversized storage pocket
- High-grade ABS plastic
- Comprehensive instruction manual
- All necessary hardware included for easy installation

N
 P

N NEW **P** PAINTED **DD** DOUBLE DIN

CALL TO ORDER: 1.800.221.0932



For specific applications please refer to the application guide on pages 181-269
For DDIN reference guide see pages 99-100 • For Multi-kit guide see pages 101-104

Soft rubber buttons laser etched
for backlighting with LED's to show
on or off

Replaces entire climate control
panel and retains full functionality
of the original system



Brushed aluminum with chrome
edges to match factory

**95-7605A Infiniti G35
Sedan 2005-2006
Coupe 2005-2007**

- Now with a brushed aluminum finish to match factory finish
- Replaces entire climate control panel
- Retains full functionality of the HVAC system
- Recessed DIN opening
- ISO mount only
- Double-DIN radio trim included
- Painted silver and contoured to match factory dash
- High-grade ABS plastic
- Comprehensive instruction manual
- All necessary hardware included for easy installation



TURBO KITS

N NEW **P** PAINTED **DD** DOUBLE DIN

FAX YOUR ORDER: 1.800.647.8091

NISSAN

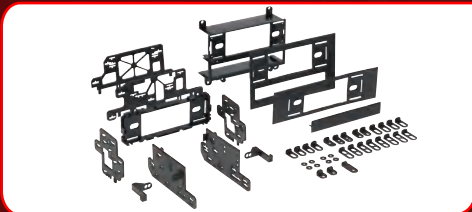
For specific applications please refer to the application guide on pages 181-269
 For DDIN reference guide see pages 99-100 • For Multi-kit guide see pages 101-104



99-7013 Mitsubishi Outlander 2007-2008

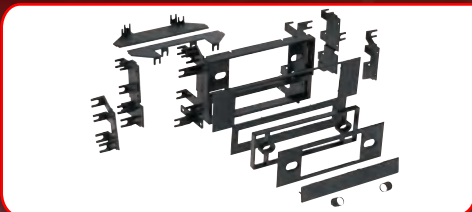
DD

- Designed specifically for the installation of double-DIN radios or two single-DIN radios
- Metra's patented quick release snap-in, ISO-mount system with custom trim ring
- Recessed DIN opening



99-7400 Nissan Multi-Kit 1980-1994

- Multi-purpose TurboKit offers quick conversion from 2-shaft to DIN
- Multiple faceplates for most applications



99-7401 Nissan Multi-Kit 1984-1997

- Professional Installer Series TurboKit offers quick conversion from 2-shaft to DIN
- Equalizer provision allows the installation of a 1/4 or 1/2 DIN equalizer



99-7403 Nissan Pathfinder 2003-2004 (LE Models) Infiniti QX4 2001-2003

- Provides pocket with recessed mounting of a DIN radio or an ISO DIN radio using Metra's patented ISO Quick-Release bracket



99-7404 Nissan Maxima 2004-2006

P

- ISO mount only
- Retains factory A/C controls and pocket
- Painted silver and contoured to match factory dashboard color and texture



95-7404S Nissan Maxima 2004-2006

P

- Double DIN radio provision
- ISO mount only
- Painted silver and contoured to match factory dashboard color and texture

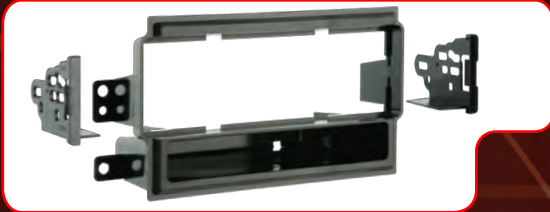
DD

N NEW **P** PAINTED **DD** DOUBLE DIN



NISSAN

For specific applications please refer to the application guide on pages 181-269
For DDIN reference guide see pages 99-100 • For Multi-kit guide see pages 101-104



99-7405 Nissan Titan 2004-2006 (without dual zone climate controls)

- Comes with oversized under-radio storage pocket
- Snap in support system with trimplate



99-7409 Nissan Maxima 240SX 1995-1999

- Quick conversion from 2-shaft to DIN
- Designed to mount precisely to the OEM radio mounting positions
- Allows installation of a 1/4" or 1/2" DIN equalizer, radar detector, pre-amp or flashing LEDs for security
- High grade ABS plastic



99-7606 Nissan Titan & Armada (with dual zone climate control) 2006-2007

- Metra's patented Snap-In ISO Support System
- Painted and contoured to match factory dash
- DIN & DDIN

P

DD



99-7406 Nissan Titan & Armada 2004-2006 (without dual zone climate controls)

- Metra's patented Snap-In ISO Support System
- Painted and contoured to match factory dash
- Recessed DIN opening

P



95-7406 Nissan Titan & Armada 2004-2006 (without dual zone climate controls)

- Painted and contoured to match factory dash
- DDIN specific

P

DD



99-7410 Nissan Sentra 200SX 1995-1999

- Quick conversion from 2-shaft to DIN
- Allows installation of a 1/4" or 1/2" DIN equalizer, radar detector, pre-amp or flashing LEDs for security

TURBO KITS

N NEW **P** PAINTED **DD** DOUBLE DIN

FAX YOUR ORDER: 1.800.647.8091



NISSAN

For specific applications please refer to the application guide on pages 181-269
For DDIN reference guide see pages 99-100 • For Multi-kit guide see pages 101-104



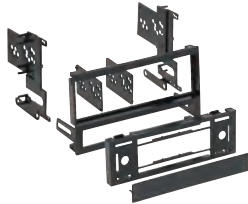
99-7411 Nissan 300ZX 1984-1989

- Professional Installer Series TurboKit offers quick conversion from 2-shaft to DIN
- Mounting trimplate accommodates power antenna switch



99-7412 Nissan Quest Mercury Villager 1993-1998

- Easy conversion from 2-shaft to DIN
- Pocket holds two CD jewel cases



99-7413 Nissan Altima 1993-2001

- Recessed for DIN applications
- Equalizer trimplate included for times when no EQ is installed



99-7414 Nissan Sentra 2000-2006

- Accommodates DIN or ISO DIN radios
- Contoured to match factory dashboard



99-7415 Nissan Quest Mercury Villager 1999-2003

- Recessed for DIN mount applications
- Accommodates two CD jewel cases in pocket



99-7416 Nissan Maxima 2000-2003

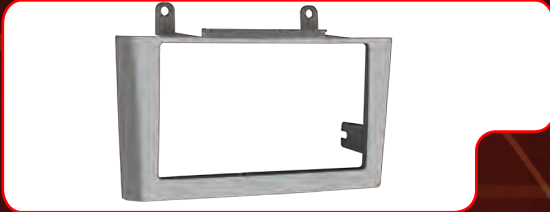
- Recessed for DIN mount applications
- Accommodates two CD jewel cases in pocket

N NEW **P** PAINTED **DD** DOUBLE DIN

CALL TO ORDER: 1.800.221.0932

NISSAN

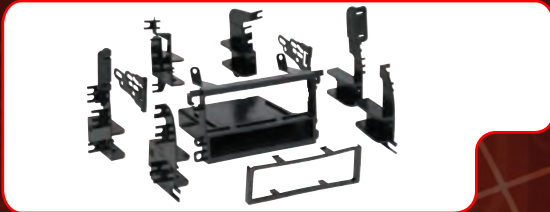
For specific applications please refer to the application guide on pages 181-269
 For DDIN reference guide see pages 99-100 • For Multi-kit guide see pages 101-104



95-7416G Nissan Maxima 2000-2003 (Equipped with Bose or Comfort and Convenience Packages)

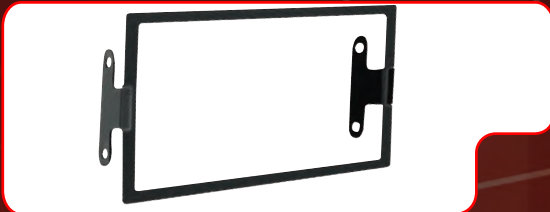
DD

- Double DIN radio provision
- Painted gray to match factory dash



99-7417 Nissan Multi-Kit 1993-2004

- For ISO and DIN mount applications
- Accommodates two CD jewel cases in pocket



95-7417 Nissan Multi-Kit 1993-2004

DD

- Designed specifically for the installation of double DIN radios



99-7418 Nissan Altima 2002-2004

- Provides pocket with recessed mounting of a DIN radio or an ISO DIN radio using Metra's patented ISO Quick-Release brackets



95-7418 Nissan Altima 2002-2004

DD

- Designed specifically for the installation of double-DIN radios



99-7419 Nissan Altima 2005-2006

- Recessed DIN opening
- Metra's patented Snap-In ISO Support System

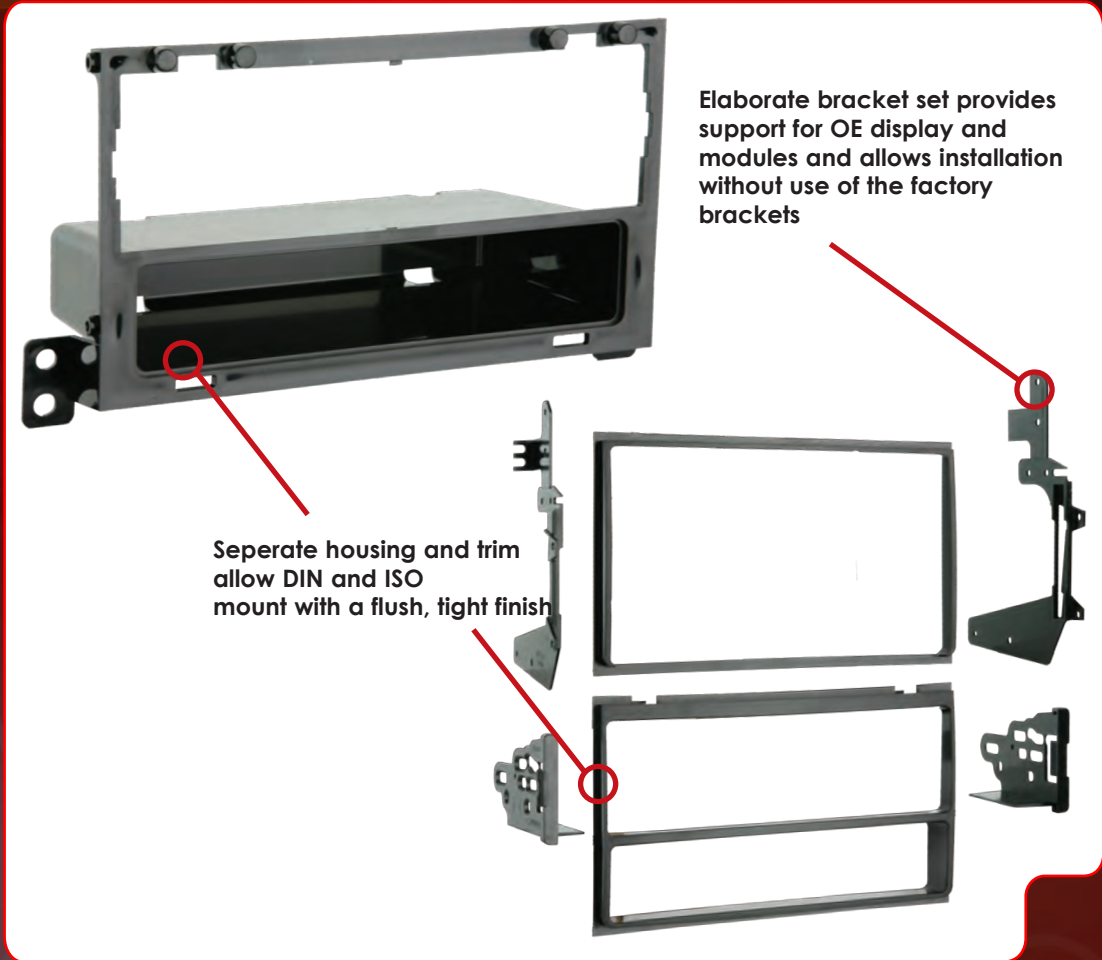
TURBO KITS

N NEW **P** PAINTED **DD** DOUBLE DIN

FAX YOUR ORDER: 1.800.647.8091

NISSAN

For specific applications please refer to the application guide on pages 181-269
 For DDIN reference guide see pages 99-100 • For Multi-kit guide see pages 101-104



99-7421 Nissan Maxima 2007-2008

- Metra's patented quick release snap in, ISO mount system
- DIN & DDIN

DD



NIRD-01 Axxess OEM Information Display & Bluetooth Retention Interface

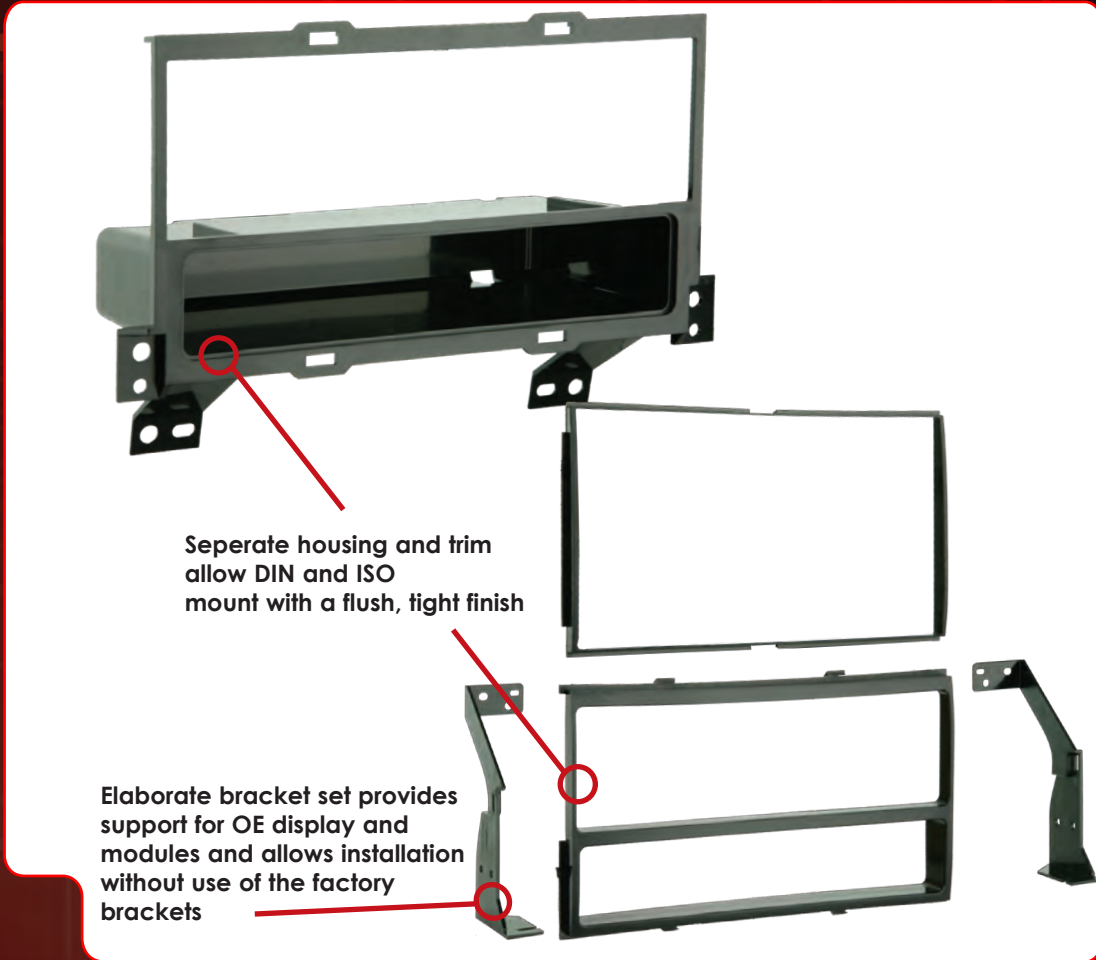
- Works with both 99-7421 & 99-7422
- Retains Bluetooth features
- Retains driver information display

N NEW **P** PAINTED **DD** DOUBLE DIN

CALL TO ORDER: 1.800.221.0932

NISSAN

For specific applications please refer to the application guide on pages 181-269
 For DDIN reference guide see pages 99-100 • For Multi-kit guide see pages 101-104



99-7422 Nissan Sentra 2007-2010

- Metra's patented quick release snap in, ISO mount system
- DIN & DDIN

DD



NIRD-01 Axxess OEM Information Display & Bluetooth Retention Interface

- Works with both 99-7421 & 99-7422
- Retains Bluetooth features
- Retains driver information display

TURBO KITS

N NEW **P** PAINTED **DD** DOUBLE DIN

FAX YOUR ORDER: 1.800.647.8091

NISSAN

For specific applications please refer to the application guide on pages 181-269
 For DDIN reference guide see pages 99-100 • For Multi-kit guide see pages 101-104



95-7419 Nissan Altima 2005-2006

- Designed specifically for the installation of double-DIN radios

DD



88-00-7422 Nissan Maxima • Sentra TurboPocket

- Replacement pocket for factory display



98-7499 Nissan TurboPocket

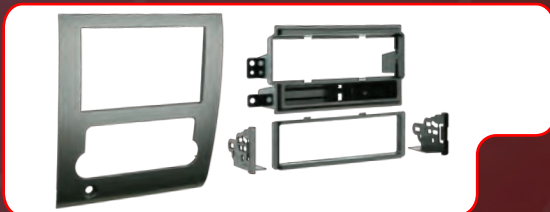
- The pocket is the same size as the vehicle factory pocket



99-7423 Nissan Altima 2007-2010

- Uniquely engineered design of two trim plates allows the retention of either OEM climate control system
- Metra's patented quick release snap in, ISO mount system
- DIN & DDIN

DD



99-7424 Nissan Titan 2008-2010

- Custom design allows th retention of the factory climate controls and passenger airbag light in their orginal location
- Metra's patented quick release snap in, ISO mount system
- Painted silver, contoured and textured to match factory dash

P



95-7424 Nissan Titan 2008-2010

- Custom design allows th retention of the factory climate controls and passenger airbag light in their orginal location
- Designed specifically for installation of double DIN radios
- Painted silver, contoured and textured to match factory dash

P

DD

N NEW **P** PAINTED **DD** DOUBLE DIN

NISSAN

For specific applications please refer to the application guide on pages 181-269
 For DDIN reference guide see pages 99-100 • For Multi-kit guide see pages 101-104



99-7425 Nissan Rogue 2008-2010

- Metra's patented quick release snap in, ISO mount system
- Recessed DIN opening



95-7425 Nissan Rogue 2008-2010

- Designed specifically for installation of double DIN radios

DD



99-7426 Nissan Murano 2009-2010

- Not for BOSE or NAV equipped vehicles. Climate controls must be above the factory radio
- Includes parts for installation of double DIN radios
- Metra's patented quick release snap in, ISO mount system with custom trim ring
- Painted black to match factory finish

P

DD



99-7427B Nissan Maxima 2009

- High-grade ABS plastic - contoured and textured to compliment factory dash
- Built in oversized storage pocket
- Painted matte black over a custom texture to match OEM factory finish
- **Also available in gray 99-7427G**

N

P



95-7427G Nissan Maxima 2009

- Metra's patented, Quick Release Snap-In, ISO mount system with custom trim ring
- Includes parts for installation of double DIN radios or two single DIN radios
- Painted gray over a custom texture to match OEM factory finish
- **Also available in matte black 95-7427B**

N

P

DD

TURBO KITS

N NEW **P** PAINTED **DD** DOUBLE DIN

FAX YOUR ORDER: 1.800.647.8091

NISSAN

For specific applications please refer to the application guide on pages 181-269
For DDIN reference guide see pages 99-100 • For Multi-kit guide see pages 101-104



99-7428B 2009-2010 Nissan Frontier LE & SE w/options (excludes XE & SE w/o options) 2009-2010 Nissan Xterra (all but X model) 2009-2010 Suzuki Equator Crew Cab

- DIN/DDIN radios
- Painted matte black to match factory finish

N
P
DD



99-7428G 2009-2010 Nissan Frontier LE & SE w/options (excludes XE & SE w/o options) 2009-2010 Nissan Xterra (all but X model) 2009-2010 Suzuki Equator Crew Cab

- DIN/DDIN radios
- Painted gray to match factory finish

N
P
DD



99-7580 Nissan Frontier 1998-2001 Xterra 2000-2001

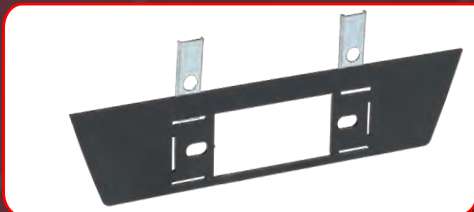
- Allows the installation of a 1/4" or 1/2" DIN equalizer with supports



99-7581 Nissan Pathfinder 2005-2007 Frontier & Xterra 2005-2008

- Recessed DIN opening
- Metra's patented Snap-In ISO Support System
- For DIN and DDIN

DD



99-7471 Nissan 280ZX 1979-1983

- Professional Installer Series TurboKit offers quick conversion from 2-shaft to DIN
- Wide mounting faceplate bracket for complete coverage
- Constructed of high grade ABS plastic



99-7477 Nissan Hardbody Pathfinder 1986-1993

- Quick conversion from 2-shaft to DIN with snap-in style shaft supports
- Recessed for DIN applications

N NEW **P** PAINTED **DD** DOUBLE DIN

NISSAN

For specific applications please refer to the application guide on pages 181-269
 For DDIN reference guide see pages 99-100 • For Multi-kit guide see pages 101-104



99-7578 Nissan Hardbody 1994-1997 Pathfinder 1994-1995

- Kit has built-in EQ supports
- Radio support is provided from our patented "Side Arm Support System™"



99-7579 Nissan Pathfinder 1996-2000

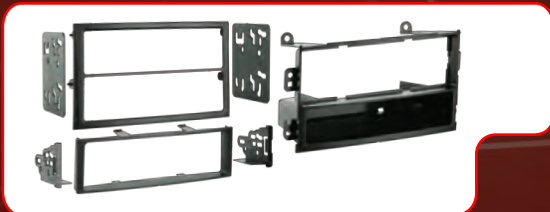
- Recess mount for DIN radios
- Radio side support is provided by our patented "Side Arm Support System™"
- Allows the installation of a 1/4" or 1/2" DIN equalizer



99-7602 Nissan 350Z 2006-2008

- Metra's patented Snap-In ISO Support System
- Double-DIN radio trim included

DD



99-7402 Nissan 350Z 2003-2005

- For DIN & DDIN radios
- Metra's patented Snap-In ISO Support System

DD



99-7603 Nissan Versa 2007-2010

- Metra's patented Snap-In ISO Support System
- Double-DIN radio trim included

DD



99-7607B Nissan 370Z 2009-2010

- Painted a scratch resistant matte black to match factory dash
- Single and Double DIN radio provision

N

P

DD

TURBO KITS

N NEW **P** PAINTED **DD** DOUBLE DIN

FAX YOUR ORDER: 1.800.647.8091



NISSAN/SUZUKI

For specific applications please refer to the application guide on pages 181-269
For DDIN reference guide see pages 99-100 • For Multi-kit guide see pages 101-104



99-7608 Nissan Cube 2009-2010

- Double DIN radio provision
- DIN radio provision with pocket

N
DD



99-7609G Infiniti I30/I35 2000-2004

- Double DIN radio provision
- ISO stacked radio provision
- Painted gray to match factory dash

N
P
DD



99-7950 Suzuki Grand Vitara 2003-2005 XL7 2003-2006 • Aveo 2003-2004

- Metra's patented Snap-In ISO Support System
- Recessed DIN mount



99-7951 Suzuki Verona & Forenza 2004-2008 Chevrolet Aveo 2004-2006 Aveo hatchback 2007-2008

- Metra's patented Snap-In ISO Support System
- Recessed DIN mount



95-7951 Suzuki Verona & Forenza 2004-2008 • Chevrolet Aveo 2004-2006 Aveo hatchback 2007-2008

- Designed for double DIN installations

DD



95-7953T Suzuki Grand Vitara 2006-2010

- Painted tan to match factory finish
- Designed for DDIN installations

P
DD

N NEW **P** PAINTED **DD** DOUBLE DIN

CALL TO ORDER: 1.800.221.0932



SUZUKI/SUBARU

For specific applications please refer to the application guide on pages 181-269
For DDIN reference guide see pages 99-100 • For Multi-kit guide see pages 101-104



95-7953 Suzuki Grand Vitara 2006-2010

- Designed for double DIN installations
- Painted matte black to match factory finish

P

DD



99-7953 Suzuki Grand Vitara 2006-2010

- Metra's patented Quick Release Snap-In, ISO mount system with custom trim ring
- Painted black to compliment factory finish

P



99-7953T Suzuki Grand Vitara 2006-2010

- Painted to match factory tan finish
- Metra's patented Quick release ISO mount system

P



99-7952 Suzuki Aerio 2005-2007

- Metra's patented Quick Release Snap-In, ISO-mount system with custom trim ring
- Recessed DIN opening



99-7954 Suzuki SX4 2007-2010

- Metra's patented Quick Release Snap-In, ISO-mount system with custom trim ring
- DIN & DDIN

DD



99-8900 Subaru Multi-Kit 1981-1994

- Multi-Purpose TurboKit offers quick conversion from 2-shaft to DIN
- Fits entire Subaru line including the Justy and Legacy
- 1" extension to compensate for depth problems

TURBO KITS

N NEW **P** PAINTED **DD** DOUBLE DIN

FAX YOUR ORDER: 1.800.647.8091

SUBARU

For specific applications please refer to the application guide on pages 181-269
 For DDIN reference guide see pages 99-100 • For Multi-kit guide see pages 101-104



99-8901 Subaru Legacy Outback (excluding Outback Sport) 2005-2006

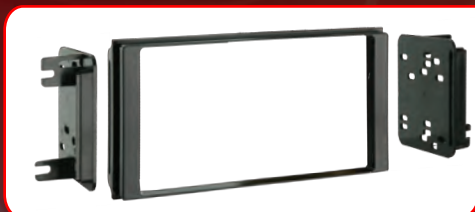
P

- Metra's patented Quick-Release, Snap-In, ISO-mount system with custom trim ring
- Allows retention of factory climate controls in their original location
- Contoured, textured and painted gray to compliment factory dash



99-8902 Subaru Impreza 2008-2010 Subaru WRX 2008-2010 • Forester 2009-2010

- Metra's patented Quick-Release, Snap-In, ISO-mount system with custom trim ring
- Recessed DIN opening



95-8902 Subaru Impreza 2008-2010 Subaru WRX 2008-2010 Forester 2009-2010

DD

- Designed specifically for the installation of double-DIN radios



99-8903B Subaru Legacy Outback 2010

N

- DIN radio provision with pocket
- Painted a scratch resistant matte black to match factory dash

P



95-8903B Subaru Legacy Outback 2010

N

- Double DIN radio provision
- Painted a scratch resistant matte black to match factory dash

P

DD



95-8904B Subaru Legacy/Outback 2010 (Radio mounts at an angle to look more like a factory install)

N

- Double DIN radio provision
- ISO stacked radio provision
- Painted a scratch resistant matte black to match factory dash

P

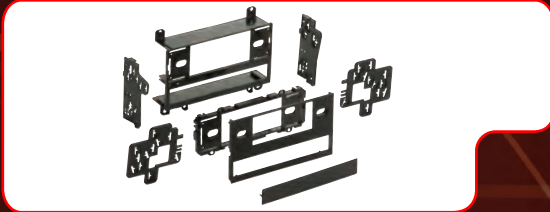
DD

N NEW **P** PAINTED **DD** DOUBLE DIN

CALL TO ORDER: 1.800.221.0932

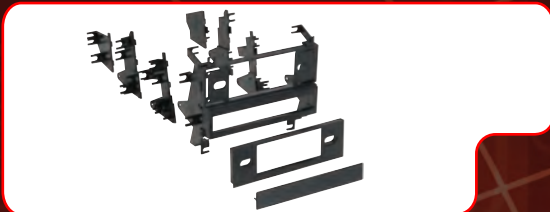
TOYOTA

For specific applications please refer to the application guide on pages 181-269
 For DDIN reference guide see pages 99-100 • For Multi-kit guide see pages 101-104



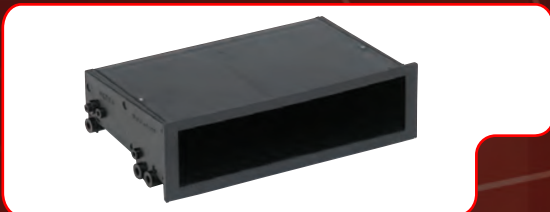
99-8100 Toyota Multi-Kit 1982-1995

- Multi-Purpose TurboKit offers quick conversion from 2-shaft to DIN
- Unique push-through tabs with multiple side pieces make kit preparation easy



99-8101 Toyota Multi-Kit 1984-2004

- Professional Installer TurboKit offers quick conversion from 2-shaft to DIN
- Equalizer provision allows the installation of a 1/4 or 1/2 DIN equalizer



88-00-8000 Toyota Pocket 1982-2004

- Using factory brackets combine our pocket with an ISO DIN mounted radio to replace a factory double-DIN radio



99-8201 Toyota Celica 2000-2005 Echo 2000-2005

- Specially designed for ISO mount radios
- Pocket holds three CD jewel cases



99-8202 Toyota Mini Multi-Kit

- Quick conversion from 2-shaft to DIN



95-8202 Toyota • Scion Multi-Kit 2000-2010

- Designed specifically for the installation of double DIN radios

DD

TURBO KITS

N NEW **P** PAINTED **DD** DOUBLE DIN

FAX YOUR ORDER: 1.800.647.8091

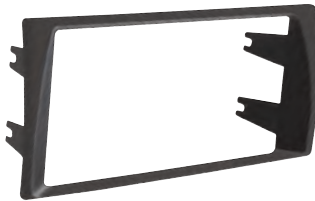
TOYOTA

For specific applications please refer to the application guide on pages 181-269
 For DDIN reference guide see pages 99-100 • For Multi-kit guide see pages 101-104



99-8203 Toyota Camry 2002-2006

- Provides pocket with recessed mounting of a DIN radio or ISO DIN radio using Metra's patented ISO Quick-Release brackets



95-8203 Toyota Camry 2002-2006

- Designed specifically for the installation of double-DIN radios

DD



99-8204 Toyota Corolla 2003-2008

- Provides pocket with recessed mounting of a DIN radio
- Uses ISO DIN radio using Metra's patented ISO Quick-Release brackets



95-8204 Toyota Corolla 2003-2008

- Designed specifically for the installation of double-DIN radios

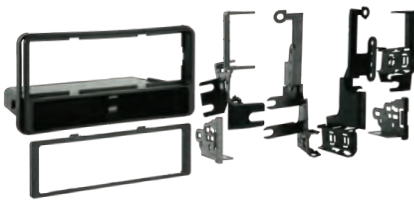
DD



99-8205 Toyota Matrix 2003-2008 Pontiac Vibe 2003-2008

- Fits an ISO mount unit with a pocket using Metra's Snap-In ISO radio supports
- DIN & DDIN

DD



99-8206 Toyota Highlander 2001-2007 4Runner 2003-2009 (Excluding Limited)

- Provides pocket with recessed mounting of a DIN radio or an ISO DIN radio using Metra's patented ISO Quick-Release brackets

N NEW **P** PAINTED **DD** DOUBLE DIN

CALL TO ORDER: 1.800.221.0932

TOYOTA

For specific applications please refer to the application guide on pages 181-269
 For DDIN reference guide see pages 99-100 • For Multi-kit guide see pages 101-104



99-8207 Toyota Sequoia 2003-2007 Tundra 2003-2006

- Provides pocket with recessed mounting of a DIN radio or an ISO DIN radio using Metra's patented ISO Quick-Release brackets



99-8208 Toyota Sienna 2004-2010

- Metra's patented Snap In ISO Support System
- Recessed DIN mount



95-8208 Toyota Sienna 2004-2010

- Designed specifically for the installation of double-DIN radios

DD



99-8209 Scion (All Models)

- Recessed DIN opening
- Metra's patented Snap In ISO Support System



99-8210 Toyota 4Runner (Limited Radios) 2003-2009

- Recessed DIN opening
- Metra's patented Snap-In ISO Support System



95-8210 Toyota 4Runner (Limited Radios) 2003-2009

- Designed specifically for the installation of double-DIN radios

DD

TURBO KITS

N NEW **P** PAINTED **DD** DOUBLE DIN

FAX YOUR ORDER: 1.800.647.8091

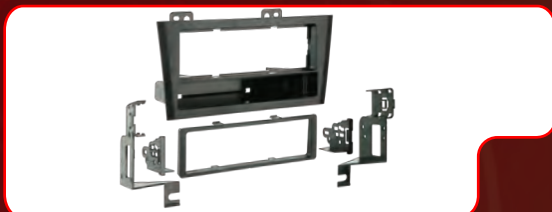
TOYOTA

For specific applications please refer to the application guide on pages 181-269
 For DDIN reference guide see pages 99-100 • For Multi-kit guide see pages 101-104



95-8211 Toyota Avalon 2000-2004
 • Designed specifically for the installation of double-DIN radios

DD



99-8211 Toyota Avalon 2000-2004
 • Recessed DIN opening
 • Metra's patented Snap In ISO Support System



95-8212 Toyota Solara 2004-2008
 • Designed specifically for the installation of double-DIN radios
 • Painted silver and contoured to match factory dashboard

P

DD



99-8212S Toyota Solara 2004-2008
 • Recessed DIN opening
 • Metra's patented Snap In ISO Support System
 • Painted silver and contoured to match factory dashboard

P



99-8212 Toyota Solara 2004-2008
 • Recessed DIN opening
 • Metra's patented Snap In ISO Support System



99-8213 Toyota Prius 2004-2009
 • ISO support system using the factory radio brackets

N NEW **P** PAINTED **DD** DOUBLE DIN

TOYOTA

For specific applications please refer to the application guide on pages 181-269
 For DDIN reference guide see pages 99-100 • For Multi-kit guide see pages 101-104



99-8214TB Toyota Tacoma 2005-2010

- Textured and painted black to match OEM finish
- Metra's patented Quick-Release, Snap-In, ISO-mount system with custom trim ring
- Allows retention of factory climate controls in their original location
- DIN & DDIN

P

DD



99-8214TG Toyota Tacoma 2005-2010

- Textured and painted gray to match OEM finish
- Metra's patented Quick-Release, Snap-In, ISO-mount system with custom trim ring
- Allows retention of factory climate controls in their original location
- DIN & DDIN

P

DD



99-8140 Toyota Pickup 1989-1995 4Runner 1989-2002 T100 1993-1998 Tacoma 1995-2004

- Professional Installer Series TurboKit features quick conversion from 2-shaft to DIN
- Fits either single-DIN or double-DIN dashes



99-8215 Toyota Avalon 2005-2010

- Recessed DIN opening



99-8216 Toyota Yaris 2007-2010

- Recessed DIN opening
- Metra's patented Snap In ISO Support System



99-8217 Toyota Rav4 2006-2010

- Recessed DIN opening
- Metra's patented Snap In ISO Support System
- Painted matte black and contoured to match factory dashboard
- DIN & DDIN

P

DD

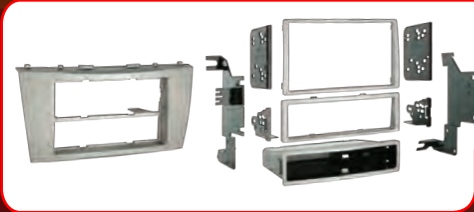
TURBO KITS

N NEW **P** PAINTED **DD** DOUBLE DIN

FAX YOUR ORDER: 1.800.647.8091

TOYOTA

For specific applications please refer to the application guide on pages 181-269
 For DDIN reference guide see pages 99-100 • For Multi-kit guide see pages 101-104



99-8218 Toyota Camry 2007-2010

- Recessed DIN opening
- Metra's patented Snap In ISO Support System
- Painted silver and contoured to match factory dashboard
- DIN & DDIN

P
DD



99-8219 Toyota FJ Cruiser 2007-2010

- Recessed DIN opening
- Metra's patented Snap In ISO Support System



99-8220 Toyota Tundra 2007-2010 Sequoia 2008-2010

- Recessed DIN opening
- Metra's patented Snap In ISO Support System
- Painted matte black
- DIN & DDIN

P
DD



99-8220HG Toyota Tundra 2007-2010 Sequoia 2008-2010

- Painted high gloss "piano black" to match factory finish
- Same features as 99-8220

P
DD



99-8222 Toyota Highlander 2008-2010

- Recessed DIN opening
- Metra's patented Snap In ISO Support System
- Painted matte black to match the factory finish
- DIN & DDIN

P
DD



99-8222BR Toyota Highlander 2008-2010

- Painted brown to match the factory finish
- Same features as the 99-8222

P
DD

N NEW **P** PAINTED **DD** DOUBLE DIN

CALL TO ORDER: 1.800.221.0932

TOYOTA

For specific applications please refer to the application guide on pages 181-269
 For DDIN reference guide see pages 99-100 • For Multi-kit guide see pages 101-104



99-8223 Toyota Corolla 2009-2010

- Metra's patented quick release, snap-in, ISO mount system with a custom trim ring
- Recessed DIN opening
- Painted matte black to match OEM color and finish

P



95-8223 Toyota Corolla 2009-2010

- Designed specifically for installation of double DIN radios
- Factory brackets are used for multiple applications and rigidity
- Painted matte black to match OEM color and finish

P

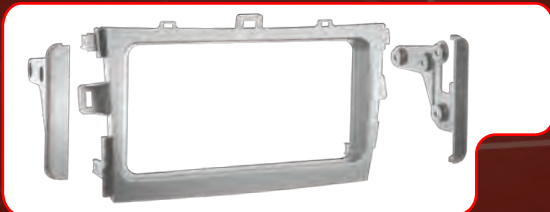
DD



99-8223S Toyota Corolla 2009-2010

- Metra's patented quick release, snap-in, ISO mount system with a custom trim ring
- Recessed DIN opening
- Painted silver to match factory color and texture

P



95-8223S Toyota Corolla 2009-2010

- Designed specifically for installation of double DIN radios
- Factory brackets are used for multiple applications and rigidity
- Painted silver to match OEM color and finish

P

DD



99-8224 Toyota Matrix 2009-2010 Pontiac Vibe 2009

- Metra's patented quick release, snap-in, ISO mount system with a custom trim ring.
- Recessed DIN opening.



95-8224 Toyota Matrix 2009-2010 Pontiac Vibe 2009

- Designed specifically for installation of double-DIN radios

DD

TURBO KITS

N NEW **P** PAINTED **DD** DOUBLE DIN

FAX YOUR ORDER: 1.800.647.8091

TOYOTA

For specific applications please refer to the application guide on pages 181-269
 For DDIN reference guide see pages 99-100 • For Multi-kit guide see pages 101-104

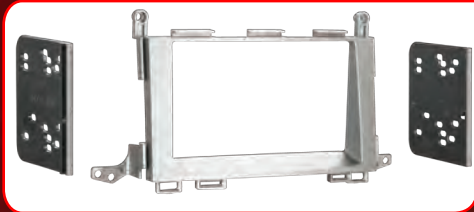


99-8225G Toyota Venza 2009

- Designed for installation of single DIN radios
- Painted to match factory color and texture
- Contoured and textured to compliment factory dash

N

P



95-8225G Toyota Venza 2009

- Designed specifically for installation of double-DIN radios or two single DIN radios
- Painted to match factory color and texture
- Contoured and textured to compliment factory dash

N

P

DD



99-8226B Toyota Prius 2010

- Painted a scratch resistant matte black to match factory dash
- Designed for DIN & DDIN

N

P



95-8226B Toyota Prius 2010

- Double DIN radio provision
- ISO stacked radio provision
- Painted a scratch resistant matte black to match factory dash

N

P

DD



99-8227S Toyota 4-Runner 2010

- Double DIN radio provision
- ISO stacked radio provision
- Painted a silver finish

N

P

DD



99-8150 Lexus ES Series 1992-1996

- Provides pocket with recessed mounting of a DIN radio or an ISO DIN radio using Metra's patented ISO Quick-Release brackets
- Painted matte black to match OEM color and finish

P

N NEW **P** PAINTED **DD** DOUBLE DIN



For specific applications please refer to the application guide on pages 181-269
 For DDIN reference guide see pages 99-100 • For Multi-kit guide see pages 101-104



95-8150 Lexus ES Series 1992-1996

- Designed specifically for the installation of double DIN radios
- Painted matte black to match OEM color and finish

P
DD



99-8151 Lexus IS Series 2001-2005

- Painted matte black to match OEM color and finish
- Metra's patented quick release, snap-in, ISO mount system
- DIN & DDIN

P
DD



99-8152 Lexus GS Series 1998-2003

- Recessed DIN radio opening
- ISO mount radio compatible using snap-in ISO radio mounts
- Painted matte black to match OEM color and finish

P



95-8152 Lexus GS Series 1998-2003

- Designed specifically for the installation of double DIN radios using snap-in ISO radio mounts
- Painted matte black to match OEM color and finish

P
DD



99-8153 Lexus LS Series 1995-2000

- Metra's patented Snap-In ISO Support System
- Recessed DIN mount
- Painted matte black to match OEM color and finish

P



95-8153 Lexus LS Series 1995-2000

- Designed specifically for the installation of double DIN radios
- Painted matte black to match OEM color and finish

P
DD

TURBO KITS

N NEW **P** PAINTED **DD** DOUBLE DIN

FAX YOUR ORDER: 1.800.647.8091

LEXUS

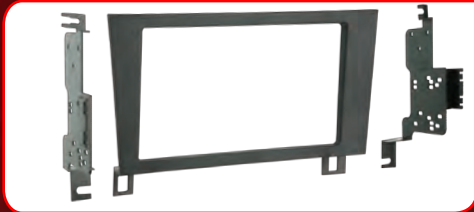
For specific applications please refer to the application guide on pages 181-269
 For DDIN reference guide see pages 99-100 • For Multi-kit guide see pages 101-104



99-8154 Lexus GS Series 1993-1997

- Metra's patented Snap In ISO Support System
- Oversized under-radio pocket
- Recessed DIN mount
- Painted matte black to match OEM color and finish

P



95-8154 Lexus GS Series 1993-1997

- Designed specifically for the installation of double DIN radios
- Painted matte black to match OEM color and finish

P

DD



99-8155 Lexus ES Series 1997-2003

- Recessed DIN opening
- Metra's patented Snap in ISO Support System
- Painted matte black to match OEM color and finish

P



95-8155 Lexus ES Series 1997-2003

- Designed specifically for the installation of double DIN radios
- Painted matte black to match OEM color and finish

P

DD



99-8156 Lexus LS Series 1990-1994

- Designed specifically for the installation of single DIN radios
- Painted matte black to match OEM color and finish

P



95-8156 Lexus LS Series 1990-1994

- Designed specifically for the installation of double DIN radios
- Painted matte black to match OEM color and finish

P

DD

N NEW **P** PAINTED **DD** DOUBLE DIN

TURBO KITS



LEXUS/DAEWOO/VW

For specific applications please refer to the application guide on pages 181-269
For DDIN reference guide see pages 99-100 • For Multi-kit guide see pages 101-104



99-8157B Lexus SC Series 1992-2000

- Metra's patented quick release, snap-in, ISO mount system with a custom trim ring.
- Recessed DIN opening.
- Painted matte black to match factory color and texture

N
P



95-8157B Lexus SC Series 1992-2000

- Designed specifically for installation of double-DIN radios
- Painted matte black to match factory color and texture
- Contoured and textured to compliment factory dash

N
P
DD



99-8800 Daewoo Lanos Laganza Nubira 1998-2002

- Specially designed for a recessed DIN mount
- Pocket holds three CD jewel cases



99-9008 Volkswagen New Beetle 1998-2010

- Professional Installer Series TurboKit offers ISO DIN and DIN
- Unique side clips make installation fast



99-9009 Volkswagen Touareg Touareg 2 2004-2010

- Recessed DIN opening
- Metra's patented Snap-In ISO Support System



95-9009 Volkswagen Touareg Touareg 2 2004-2010

- Designed specifically for the installation of double DIN radios
- Contoured to match factory dashboard
- High-grade ABS plastic

DD

TURBO KITS

N NEW P PAINTED DD DOUBLE DIN

FAX YOUR ORDER: 1.800.647.8091



VW/AUDI

For specific applications please refer to the application guide on pages 181-269
For DDIN reference guide see pages 99-100 • For Multi-kit guide see pages 101-104



**99-9011 VW CC 2009-10/EOS 2007-10
New Jetta 2005-10/GLI 2008-10
GTI 2006-10/Passat 2006-10
Rabbit 2006-09/R32 2008/Tiguan 2009-10
Golf 2010**

DD

- Recessed DIN opening
- Metra's patented Snap-In ISO Support System
- DIN & DDIN



**95-9012 Volkswagen Golf 1999-2006
GTI/Jetta 1999-2005 (not new style)
Passat 2000-2005**

N

P

- Double DIN radio provision

DD



**86-9001 Volkswagen
Audi • Mercedes Radio
Removal Tool 1998-2006**



**88-00-9008 Volkswagen
Pocket 2001-2003**

- Using our pocket with a DIN radio will completely fill the double-DIN opening left by the factory radio



**99-9100 Audi Multi-Kit (A4, A6, A8)
1997-1999 • TT 2001-2006**

- Professional Installer Series TurboKit fits the factory radio opening perfectly



99-9101 Audi A6 2000-2003

- Accommodates a full DIN radio with pocket or mounts two DIN radios without pocket

P

DD

N NEW **P** PAINTED **DD** DOUBLE DIN



AUDI/VOLVO

For specific applications please refer to the application guide on pages 181-269
For DDIN reference guide see pages 99-100 • For Multi-kit guide see pages 101-104



99-9103 Audi A4 2001-2004

(Concert Radio)

- Recessed DIN mount
- Painted matte black to match OEM color and finish



99-9104 Audi A3 2007-2010

- Interchangeable design allows recessed DIN opening to be above or below the pocket
- Removable oversized storage pocket with built-in radio supports
- Painted matte black to match factory finish

P



99-9105 Audi A4 2000-2001

- Interchangeable design allows recessed DIN opening to be above or below the pocket
- DIN & DDIN

DD



99-9107B Audi A4 2001-2004

- Double DIN or single DIN radio with pocket
- Painted a scratch resistant matte black to match factory dash

N

P

DD



99-9200 Volvo 740 & 760 Series 1985-1992

- Professional Installer Series TurboKit offers quick conversion from 2-shaft to DIN
- Unique side clips make installation fast



99-9222 Volvo Multi-Kit 1975-1993

- Professional Installer Series TurboKit offers quick conversion from 2-shaft to DIN
- Recessed for DIN
- Designed to mount precisely to the OEM radio mounting position

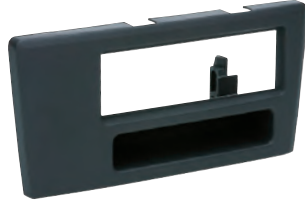
TURBO KITS

N NEW P PAINTED DD DOUBLE DIN

FAX YOUR ORDER: 1.800.647.8091

VOLVO

For specific applications please refer to the application guide on pages 181-269
 For DDIN reference guide see pages 99-100 • For Multi-kit guide see pages 101-104



99-9223 Volvo S60 V70 XC70 2001-2004

- Uses factory radio brackets for a strong secure mount
- Will accommodate a single DIN unit

P



99-9224 Volvo S80 1999-2005

- Uses factory radio brackets for a strong secure mount
- Will accommodate a single DIN unit
- Painted matte black to match factory finish

P



99-9225 Volvo XC90 2003-2010

- Contoured to match factory dashboard
- Painted matte black to match factory finish

P



99-9226 Volvo V70 S60 2005-2007

- Metra's patented quick release, snap-in, ISO mount system with custom trim ring
- Recessed DIN opening
- Painted matte black to match factory finish

P



98-9999 Volvo 850 TurboPocket

- For use in Volvos with double-DIN radios



99-9300 BMW 3 Series Multi-Kit 1997-2005

318 (All) 1999 • 323 (All) 1997-2000
 325 (All) 2001 • 328 (All) 1997-2000
 330 (All) 2001

- Professional Installer Series TurboKit fits DIN radios
- Matches factory dash contour perfectly

N NEW **P** PAINTED **DD** DOUBLE DIN

CALL TO ORDER: 1.800.221.0932



BMW

For specific applications please refer to the application guide on pages 181-269
For DDIN reference guide see pages 99-100 • For Multi-kit guide see pages 101-104



99-9301 BMW 5 Series 1997-2003 X5 2000-2006

- Will accommodate a single DIN unit
- Contoured to match factory dashboard



95-9307B BMW 5-Series 1997-2003

- Double DIN radio provision
- Painted a scratch resistant matte black to match factory dash

N
P
DD



95-9308B BMW X5 2000-2006

- Double DIN radio provision
- Painted a scratch resistant matte black to match factory dash

N
P
DD



99-9303 BMW Z4 2003-2008

- Will accommodate a single DIN unit
- Contoured to match factory dashboard



99-9305 BMW X3 2004-2010

- ISO mount only



95-9306B BMW 3 Series 2006-2010 (without NAV)

- Double DIN radio provision
- Painted a scratch resistant matte black to match factory dash

TURBO KITS

N NEW P PAINTED DD DOUBLE DIN

FAX YOUR ORDER: 1.800.647.8091



BMW/MINI/ MERCEDES

For specific applications please refer to the application guide on pages 181-269
For DDIN reference guide see pages 99-100 • For Multi-kit guide see pages 101-104



99-9306B BMW 1 Series 2008-2010 3 Series 2006-10 (without NAV)

- Painted a scratch resistant matte black to match factory dash

N
P



99-9302 Mini Cooper 2002-2006 all 2007-2008 convertible

- Designed to fit the factory radio opening perfectly
- Will accommodate a single DIN unit



99-9309 Mini Cooper 2007-2010

- Included blank out plates are designed to fill in voids left by removal of factory radio
- Single and double DIN radio with pocket provision
- ISO stacked radio provision
- Painted and textured to match factory finish

N
P
DD



99-8710 Mercedes C-Class 2001-2004

- Provides pocket with mounting of a DIN radio



99-8711 Mercedes C-Class 2001-2004

- Will accommodate a full DIN unit with a pocket
- Matches factory texture and color



99-8712 Mercedes C-Class CLK 2005-2006

- Recessed DIN mount
- Storage pocket with built-in radio supports below the radio opening

N NEW P PAINTED DD DOUBLE DIN

CALL TO ORDER: 1.800.221.0932



MERCEDES/SMART/LANROVER/JAGUAR

For specific applications please refer to the application guide on pages 181-269
For DDIN reference guide see pages 99-100 • For Multi-kit guide see pages 101-104



99-8713 Mercedes SLK 2005-2008

- Recessed DIN mount
- Designed specifically for the installation of double DIN radios

DD



99-8715 Smart Fortwo 2008-2010

- Built in storage pocket
- Recessed DIN mount
- Designed for DIN and DDIN radios

DD



89-9400 Land Rover Discovery 1994-2004

- DIN-mountable trim plate for this premium vehicle application



99-9401 Land Rover Freelander 2004-2006

- Interchangeable design allows recessed DIN opening to be above or below the pocket



99-9501B Jaguar S-Type 2003-2006 X-Type 2002-2007

- For both DIN and DDIN
- Painted matte black to match dash

N

P

DD



99-9501G Jaguar S-Type 2003-2006 X-Type 2002-2007

- For both DIN and DDIN
- Painted grey to match factory dash

N

P

DD

TURBO KITS

N NEW P PAINTED DD DOUBLE DIN

FAX YOUR ORDER: 1.800.647.8091



JAGUAR/UNIVERSAL

For specific applications please refer to the application guide on pages 181-269
For DDIN reference guide see pages 99-100 • For Multi-kit guide see pages 101-104



95-9000 Universal DDIN Housing

- For the install of double DIN radios
- Textured to match factory dash

N
DD



99-9000 Universal Underdash / CD Housing

- Premium underdash housing fully encloses the unit
- Quick conversion from 2-shaft to DIN
- CD
- Dimensions: 3.5" H x 10" W x 9" D



99-9001 Universal Snap-In Kit

- Geared toward the installation of 2-shaft aftermarket radios in factory DIN locations
- Designed for European and Japanese market
- Covers such models as the VW Jetta / Golf and Porsche as well as early-model Hondas
- Complete with Mercedes tabs



99-9005B Universal Marine Cover System

- Black or white finish
- Positive spring-loaded detent lock
- Longer life, heavy-duty, low-friction hinges
- Dual spring support while cover is open
- Accu-view tinted cover



99-9570 Universal Underdash Housing

- Unique underdash kit offers quick conversion from 2-shaft to DIN
- Easy to install



99-9999 Universal ISO Trim

- A universal trim ring to finish off a double DIN radio installation
- Can also finish off two ISO stacked radios
- ISO stacked radios are held together with our ISO brackets and/or the factory brackets

DD

N NEW **P** PAINTED **DD** DOUBLE DIN

CALL TO ORDER: 1.800.221.0932