

AMS[®] Wireless Configurator

Overview	page 1-1
System Requirements	page 1-1
Software Installation	page 1-2
System Interfaces	page 1-3
Security	page 1-3
Books Online	page 1-4

OVERVIEW

AMS[®] Wireless Configurator helps deploy and configure wireless networks. AMS Wireless Configurator makes the process of setting up a Smart Wireless Gateway faster with a more secure result.

AMS Wireless Configurator provides an integrated operating environment that leverages the full capabilities of wireless HART[™] devices, including embedded data trending, charting, and graphical display capabilities provided by enhanced EDDL technology.

AMS Wireless Configurator is installed on a PC as a Server Plus Station.

AMS Wireless Configurator does the following:

- Display and modify device configurations
- View Device Diagnostics
- View Process Variables
- Provision a wireless device using the drag-and-drop operation so it can join a Gateway's self-organizing network
- Enhance AMS Wireless Configurator functionality with the AMS Wireless SNAP-ON[™] Application
- Restrict access to AMS Wireless Configurator functions through the use of security permissions

See the Release Notes for information specific to the current release of AMS Wireless Configurator. To display the Release Notes, select **Start>Programs>AMS Device Manager>Help**.

SYSTEM REQUIREMENTS

PC Processing Speed, Memory, and Disk Space

The recommended free hard disk space specified below is the amount needed for AMS Wireless Configurator installation, not for daily operation. If a message appears during installation indicating there is not enough hard disk space, the user will need to free up space on the hard disk space before retrying installation.

Minimum Requirements	Recommended Requirements
Intel [®] Core [™] 2 Duo, 2.0 GHz	Intel [®] Core [™] 2 Quad, 2.0 GHz or greater
1 GB Memory	3 GB Memory or greater
1.5 GB free hard disk space	2 GB or more of free hard disk space

Notes:
Additional hard disk space may be required depending on the size of installation.
Additional hard disk space is required for SNAP-ON applications.
The minimum monitor requirements are 1024 x 768 resolutions and 16-bit color.

Smart Wireless Gateway

Supported Operating Systems

Operating System	Version
Windows XP®	Professional, Service Pack 2 or Service Pack 3
Windows Server®2003	Standard Edition, Service Pack 2
Windows Vista® Business	Service Pack 1
Windows Server 2008	Standard Edition, Service Pack 1

Only 32-bit versions of the operating systems are supported. The Security Setup application is not supported under Windows Vista® or Windows Server 2008



SECURITY

Windows Vista and Windows Server 2008 are not supported by the Security Setup application. See the Security Section for information on how to run a standard connection.

.NET Framework

To function properly, AMS Wireless Configuration requires Microsoft .NET™ Framework 3.5 Service Pack 1, and this application is installed during AMS Wireless Configurator installation.

SOFTWARE INSTALLATION

The Smart Wireless Gateway setup software is located on two disks, with the Network Assistant and Security Setup applications located on Disk 1. To install the software:

1. Exit/close all Windows programs, including any running in the background, such as virus scan software.
2. Insert Disk 1 of the Smart Wireless Gateway setup software into the CD/DVD drive of the PC.
3. Follow the prompts.

AMS Wireless Configurator is located on Disk 2 of the Smart Wireless Gateway setup software. To install the software:

1. Exit/close all Windows programs, including any running in the background, such as virus scan software.
2. Insert Disk 2 of the Smart Wireless Gateway setup software into the CD/DVD drive of the PC.
3. Click Install from the menu when the AMS Wireless Configurator setup begins.
4. Follow the prompts.

NOTE:

If the autorun function is disabled on the PC, or installation does not begin automatically, double click D:\SETUP.EXE (where D is the CD/DVD drive on the PC) and click OK.

Depending on configuration of the system, installation may take 30 to 35 minutes.

Before setup can be completed, AMS Wireless Configurator must reboot the PC. Please note that installation will resume automatically after login.

SYSTEM INTERFACES

With the standard system interfaces, AMS Wireless Configurator can communicate with devices connected to a Gateway and HART modem. AMS Wireless Configurator can be used to change configurations, monitor device status, and view historical configurations for the devices in these systems.

AMS Wireless Configurator supports the Wireless and HART modem interfaces.

For a system interface network to be accessible with AMS Wireless Configurator, it must be installed as a network component in the Network Configuration utility. This is launched by **Start>Programs>AMS Device Manager>Network Configuration**.

Each system interface network has settings that control certain aspects of the interaction between AMS Wireless Configurator and the host system. Click the **Help** button on the network component's installation wizard page, or on the network component's properties tab provides information on a specific setting.

NOTE

When installing a wireless interface, the box for **Enable Secure Communications with the Smart Wireless Gateway** should be checked. More information is available in the Security Section.

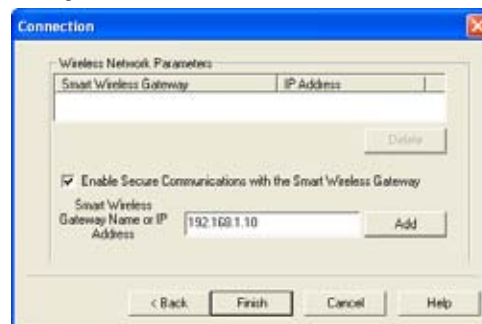
A maximum of 50 system interface networks can be installed on an AMS Wireless Configurator station.

After installing a system interface network, a Rebuild Hierarchy operation must be performed followed by a Scan New Devices operation. Thereafter, only perform Rebuild Hierarchy and Scan operations when needed. For more information, see Related Topics in the Books Online Section.

SECURITY

The Smart Wireless Gateway is secure out of the box. AMS Wireless Configurator will only work with the Gateway if secure communication is established. To set up secure communications:

1. Launch the Network Configuration utility.
2. Add a new Wireless Network.
3. Check the box for **Enable secure communications with the Smart Wireless Gateway**.



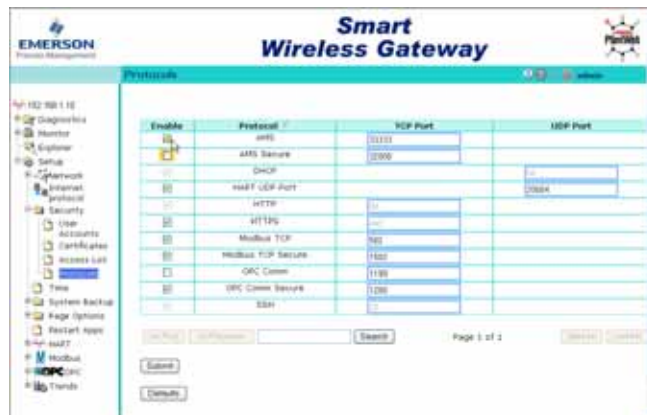
4. Add either the Host Name or IP address for the appropriate Gateways for the Wireless Network.
5. Complete the requested security information.
6. Finish setting up the Wireless Network and **Close** the Network Configuration utility.

Smart Wireless Gateway

Disable Security

If desired, the AMS Wireless Configurator can establish a standard connection to the Smart Wireless Gateway (e.g. the Security Setup application is not supported under Windows Vista). A standard connection is enabled through the Smart Wireless Gateway by:

1. Open a web browser and log on to the Smart Wireless Gateway.
2. Go to **Setup>Security>Protocols**.
3. Select the box that enables AMS, and uncheck the box for AMS Secure.
4. Click on **Submit**.
5. Click **Restart Apps** when prompted.



BOOKS ONLINE

The AMS Wireless Configurator Help system is called Books Online and provides comprehensive reference and procedural topics on the AMS Wireless Configurator. Topics may include, but are not limited to:

- System Interfaces
- Add Device Type
- Rebuild Hierarchy
- AMS Wireless Configurator Security
- AMS Wireless SNAP-ON

The AMS Wireless Configurator Books Online contains information specifically related to Wireless functionality. It does not contain all of the information of AMS Device Manager Books Online and the two collections are not searchable together. For more information about full-featured AMS Device Manager, contact your local Emerson Process Management representative.

*Rosemount and the Rosemount logotype are registered trademarks of Rosemount Inc.
PlantWeb is a registered trademark of one of the Emerson Process Management group of companies.
All other marks are the property of their respective owners.*

© 2008 Rosemount Inc. All rights reserved.

**Emerson Process Management
Rosemount Division**
8200 Market Boulevard
Chanhassen, MN 55317 USA
T (U.S.) 1 800 999 9307
T (International) 952 906 8888
F 952 949 7001

Rosemount Temperature GmbH
Frankenstrasse 21
63791 Karlstein
Germany
T 49 6188 992 0
F 49 6188 992 112

**Emerson Process Management Asia
Pacific Private Limited**
1 Pandan Crescent
Singapore 128461
T 65 6777 8211
F 65 6777 0947
Enquiries@AP.EmersonProcess.com

Emerson Process Management
No. 6 North Street
Hepingli, Dong Cheng District
Beijing 100013, China
T 86 10 6428 2233
F 86 10 6422 8586