



Product Catalogue

WELCOME



PHONE: (02) 4720 4000 **FAX:** (02) 4720 4001

SALES PHONE: 1300 536 927 **SALES FAX:** 1300 853 691

EMAIL: sales@mattek.com.au

WEB: www.mattek.com.au

We look forward to working with you...

A handwritten signature in black ink, appearing to be 'DK' followed by a stylized flourish.

Doug Kennard

A handwritten signature in black ink, appearing to be 'MK' followed by a stylized flourish.

Michael Kennard

A handwritten signature in black ink, appearing to be 'R Hyde'.

Rosi Hyde

COMPANY OVERVIEW



ourcompany

Mattek is a family owned and operated business, based in Western Sydney, NSW. Established in 1972, with three family generations of experience, Mattek can offer what the customer wants; A comprehensive range of quality products that can be shipped out fast and arrive on time, Australia wide.

Today, Mattek is still managed by the founding family and with a team of dedicated staff, Mattek can provide solutions to the needs of our valued clients.



ourmission

To be a dependable company that is committed to providing a safe, caring, and energising environment while ensuring our business partners receive the highest level of service, quality, and value promptly, in view of providing superior value and service to the consumer.



ourvision

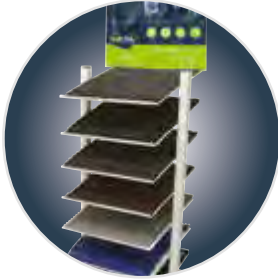
To put the correct mat under the feet of every working Australian



salesrepresentation

We offer external Representational in all states, Australia wide for onsite support. Our reps have undergone rigorous training sessions in the matting field, enabling us to provide an answer for you and your clients needs.

COMPANY OVERVIEW



merchandising

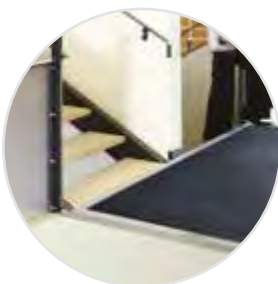
At Mattek our aim is to make it easy to sell our mats. We offer hand out flyers and sample kits for sales representatives to take out into the field with them. We provide a full catalogue and sample selector kits for internal sales staff. Our stock holding stands make it easy to stock our products in your store and posters and sample display stands create customer awareness as to our offering.



sales support

Along with our comprehensive range of merchandising materials we also offer second to none sales support. We can provide in depth training to your internal or external sales personnel, sharing with you matting advice, tools and tips. Our professional sales team can accompany your sales staff on client visits to assist in product advice, recommendations and also difficult measure ups.

We have a dedicated "Matting Sales Hotline" **1300 536 927** which is answered by one of our fully trained sales team. Here we can provide instant advice, recommendations or quotations and organise a rapid dispatch of samples to yourself or your client.



our products

- Entrance Mats – Indoor
- Commercial Entrance Matting Runners
- Entrance Mats – Outdoor
- Logo Mats
- Chair Mats
- Floorcoverings
- Anti-Fatigue Mats – Dry Area
- Anti-Fatigue Mats – Wet Area
- Anti-Slip Matting
- Modular Safety Mats
- Specialised Safety Mats
- Industrial Rubber Sheeting
- Miscellaneous



ENTRANCE MATS - INDOOR



Floor Shield

PRODUCT PERFORMANCE

ABSORPTION    

APPEARANCE    

SOIL REMOVAL  

WEAR   

CODE	SIZE
PP23	600 x 900mm
PP34	900 x 1200mm
PP35	900 x 1500mm

6mm thick

RUNNER WIDTHS:

900mm
1200mm
1800mm



Red

Blue

Smoke

FEATURES

- Absorbs water and dirt from shoes while hiding it from sight.
- Attractive smooth plush pile mat for medium traffic areas.
- Easy to clean and dries quickly.
- Solution dyed polypropylene to prevent fading.

Ribbed Mat

PRODUCT PERFORMANCE

ABSORPTION    

APPEARANCE   

SOIL REMOVAL   

WEAR   

CODE	SIZE
RM23	600 x 900mm
RM35	900 x 1500mm
RM46	1200 x 1800mm

8mm thick

RUNNER WIDTHS:

900mm
1200mm
1800mm



FEATURES

- Effective and economical mat for medium traffic areas.
- Attractive bi-level construction traps dirt.
- Coarse fibres scrape dirt and debris from shoes.
- Solution dyed to prevent fading.
- Easy to clean and dries quickly.



Red



Green



Pepper



Blue



Brown

Wondersorb

PRODUCT PERFORMANCE

ABSORPTION 

APPEARANCE 

SOIL REMOVAL 

WEAR 

CODE	SIZE
WS23	600 x 850mm
WS34	850 x 1200mm
WS35	850 x 1500mm
WS46	1150 x 1750mm
WS310	850 x 3000mm

7mm thick

 **Custom Sizes Available**



Charcoal

AVAILABLE TO ORDER



Black



Granite



Red

FEATURES

- Ultra absorbent surface retains large amounts of liquid.
- Machine washable.
- 'Dual zone' gripper backing — will grip any floor type.
- Mat surface 100% recycled, made from scrap PET bottles.
- Nitrile rubber backing won't crack or tear.



Esteem Ribbed II

PRODUCT PERFORMANCE

ABSORPTION 

APPEARANCE 

SOIL REMOVAL 

WEAR 

CODE	SIZE
ESR3RCHL	400 x 700mm
ESR6RCHL	600 x 900mm
ESR9RCHL	800 x 1200mm
ESR12RCHL	900 x 1500mm
ESR18RCHL	1200 x 1800mm

8mm thick

FEATURES

- Stylish wide ribbed polypropylene surface absorbs water and scrapes shoes clean
- Tough all weather construction for indoors or covered outdoors
- Low profile with safety borders
- Heavy duty rubber backing
- Easy to clean by vacuum or hose

Deluxe Rib

PRODUCT PERFORMANCE

ABSORPTION 

APPEARANCE 

SOIL REMOVAL 

WEAR 

CODE	SIZE
DER35PEP	900 x 1500mm
DER46PEP	1200 x 1800mm

10mm thick

FEATURES

- Coarse, bi-level ribs ensure a powerful scrub to remove dirt and debris from footwear.
- Deep channels between ribs traps the dirt and debris scraped from footwear inside the mat, preventing in being walked onto the floor.
- High absorbing polypropylene surface dries shoes quickly.
- Hardwearing fibres gives the mat a long lifespan.
- Can be un edged for mat recesses or edged for loose laying.



Pepper

ECO Mat - Cross Hatch



PRODUCT PERFORMANCE

ABSORPTION

APPEARANCE

SOIL REMOVAL

WEAR

CODE	SIZE
TCH23	600 x 900mm
TCH35	900 x 1500mm
TCH46	1200 x 1800mm

10mm thick



Smoke



Walnut

FEATURES

- Recycled carpet surface - made from scrap PET bottles
- Recycled rubber base - made from scrap rubber tyres.
- Ultra-absorbent top — dries shoes quickly.
- Reinforced bi-directional ribs scrub shoes effectively.
- Raised dam border traps moisture and debris.

ECO Mat - Squares



PRODUCT PERFORMANCE

ABSORPTION

APPEARANCE

SOIL REMOVAL

WEAR

CODE	SIZE
TSQ23	600 x 900mm
TSQ35	900 x 1500mm
TSQ46	1200 x 1800mm

10mm thick



FEATURES

- Recycled carpet surface - made from scrap PET bottles
- Recycled rubber base - made from scrap rubber tyres.
- Ultra-absorbent top — dries shoes quickly.
- Reinforced bi-directional ribs scrub shoes effectively.
- Raised dam border traps moisture and debris.



Black



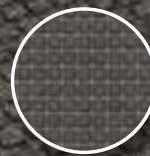
Brown



Red



Blue



Grey

Prestige Mat

PRODUCT PERFORMANCE

ABSORPTION 

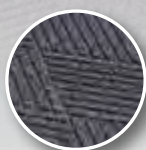
APPEARANCE 

SOIL REMOVAL 

WEAR 

CODE	SIZE
PSM3D	450 x 750mm
PSM6D	600 x 900mm
PSM12D	900 x 1500mm
PSM18D	1200 x 1800mm

11mm thick



Charcoal

FEATURES

- Attractive, hard wearing mat for medium traffic entrances
- Heavy duty rubber backed with a stylish polypropylene surface.
- All weather construction suitable for indoor or outdoor.
- Grippers on underside.
- Raised reinforced rubber border helps trap moisture and dirt.

Absorba Mat

PRODUCT PERFORMANCE

ABSORPTION 

APPEARANCE 

SOIL REMOVAL 

WEAR 

CODE	SIZE
AB23	620 x 860mm
AB35	860 x 1440mm
AB38	860 x 2400mm
AB310	860 x 2970mm
AB46	1140 x 1690mm
AB48	1140 x 2400mm
AB410	1140 x 2970mm
AB68	1750 x 2400mm
AB610	1750 x 2920mm
AB620	1800 x 6045mm

8mm thick

RUNNER WIDTH:
1800mm - Pepper

 Custom Sizes Available

FEATURES

- Heavy duty mat for high traffic areas.
- Grippers on underside minimise movement.
- Raised reinforced rubber dam border.
- Reinforced rubber raised squares to prevent pile from crushing, improving wear ability.
- For indoor/outdoor use.



Pepper

AVAILABLE TO ORDER



Brown



Blue



Red



Green



COMMERCIAL MATTING RUNNERS



Classic Stripe

FEATURES

- Classic Stripe is a heavy duty mat for medium to high traffic use.
- Used in entrances, lifts and lobbies in office buildings, schools and shopping centres.
- The soft fibres of the mat surface absorb high amounts of liquid, drying shoes quickly.
- The coarse fibres scrape solid dirt and debris from footwear.
- Can be recessed or edged for loose laying.
- Attractive design will add a high class touch to interior decor.

PRODUCT PERFORMANCE

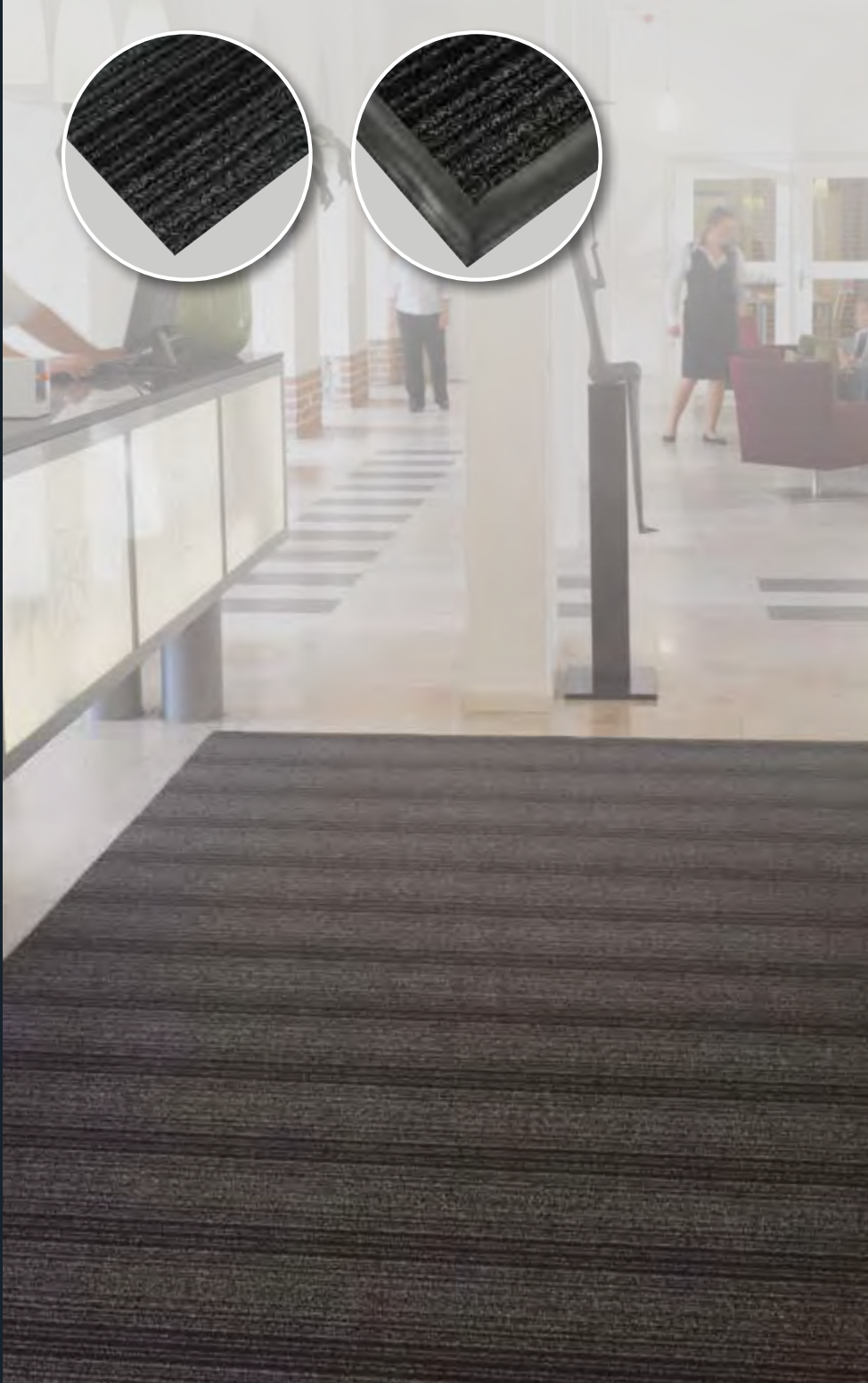
ABSORPTION	✓✓✓✓✓
APPEARANCE	✓✓✓✓✓✓✓
SOIL REMOVAL	✓✓✓✓
WEAR	✓✓✓✓✓

CODE	SIZE
CS200 ANT	2000mm wide

8mm thick



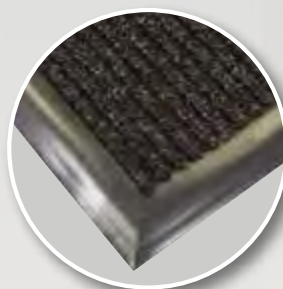
Anthracite



Deluxe Rib

FEATURES

- Heavy duty entrance matting used in high traffic entrances
- Rigid ribs on the mat surface ensure a powerful scrape to footwear
- Deep channels on the mat surface hold and trap debris and dirt scraped from shoes
- High absorbing fibres on mat surface dry shoes effectively
- Mat can be edged for loose laying or un-edged for placing into recesses



PRODUCT PERFORMANCE

ABSORPTION	✓✓✓✓✓
APPEARANCE	✓✓✓✓✓✓✓
SOIL REMOVAL	✓✓✓✓
WEAR	✓✓✓✓✓

CODE	SIZE
DER900PEP	900mm wide
DER1200PEP	1200mm wide
DER1800PEP	1800mm wide

9mm thick

Custom Sizes Available



Pepper



Coco Brush

FEATURES

- Coarse fibres effectively scrape dirt & debris from shoes.
- Tightly punched fibres hide dirt inside mat keeping mat surface clean.
- Absorbent surface dries footwear quickly.
- Durable recycled rubber backing ensures mat won't walk on floors.



PRODUCT PERFORMANCE

ABSORPTION 

APPEARANCE 

SOIL REMOVAL 

WEAR 

CODE	SIZE
CO200	2050mm wide

8mm thick



Black



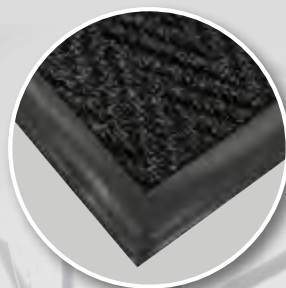
Natural



Multi Scrape

FEATURES

- Heavy duty entrance mat for high traffic use.
- Multi directional ribs on mat surface ensures a powerful scrub to remove dirt from footwear.
- High moisture absorbent surface dries shoes quickly.
- Can be recessed or edged for loose laying.



PRODUCT PERFORMANCE

ABSORPTION	✓✓✓✓✓
APPEARANCE	✓✓✓✓✓✓✓
SOIL REMOVAL	✓✓✓✓
WEAR	✓✓✓✓✓

CODE	SIZE
MT200PEP	1950mm Runner

10mm thick



Pepper



Tough Scrape



Anthracite

PRODUCT PERFORMANCE

ABSORPTION

APPEARANCE

SOIL REMOVAL

WEAR

CODE	SIZE
TS200	1950mm wide
TS400	4000mm wide

10mm thick



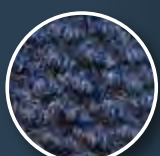
Available to order



Red



Grey



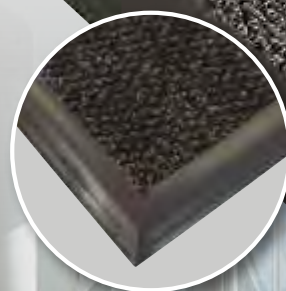
Blue



Green

FEATURES

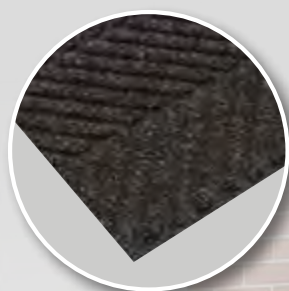
- Optional heavy duty edging available.
- Coarse fibres scrape dirt and debris from shoes.
- Solution dyed to prevent fading.
- Easy to clean.
- Dries quickly.
- High water absorption.



Premium Scraper

FEATURES

- Great versatility when it comes to custom cut applications & large entrance areas.
- Constructed using the latest technologies to enhance the performance life & appearance retention.
- Constructed using 100% polypropylene fibre which will not fade or rot.
- Easy clean & dries quickly.
- Optional heavy duty edging available.



PRODUCT PERFORMANCE

ABSORPTION

APPEARANCE

SOIL REMOVAL

WEAR

CODE	SIZE
PS180	1800mm wide

10mm thick

Custom Sizes Available



Pepper



Dura Scrape

PRODUCT PERFORMANCE

ABSORPTION 

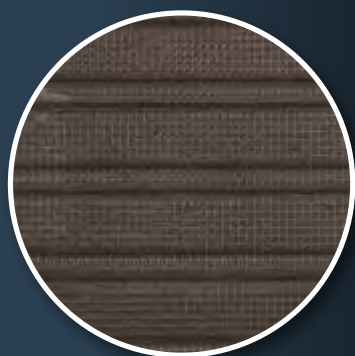
APPEARANCE 

SOIL REMOVAL 

WEAR 

CODE	SIZE
DSC200PEP	2000mm x 20m

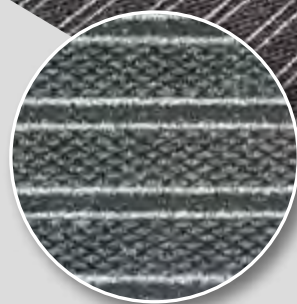
15mm thick



Backing

FEATURES

- Absorbing nylon fibres dry the feet whilst coarse polyimide fibres scrape the shoes. The collection zone catches the debris, preventing it from being tracked onto other surfaces.
- Wide collection zone helps shake rainwater from trolleys preventing slippery floors.
- Latex Base assists mat in adhering to floor surface.
- 3 Year Warranty



Platinum Scraper



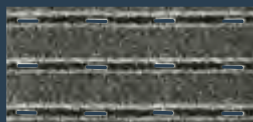
PRODUCT PERFORMANCE

- ABSORPTION
- APPEARANCE
- SOIL REMOVAL
- WEAR

CODE	SIZE
PL300	Made to measure

12mm thick

2 STAGE ENTRY SYSTEM



SUPER SCRAPER
(SCRAPE)
OUTDOOR



PLATINUM SCRAPER
(BRUSH, SCRAPE & DRY)
INDOOR

Platinum Scraper is a heavy duty, indoor/outdoor entrance mat. It is used recessed in entrances in commercial buildings, schools and shopping centres.

FEATURES

- Coarse fibres of mat combined with aluminium strips give an effective wipe to footwear
- Used in conjunction with Super Scraper for an effective matting system
- Unedged for placement into mat recesses
- Can be edged with bevelled aluminium for a non-recessed option
- Gel back helps adhere mat to floor surface

Deluxe Scraper

FEATURES

- 3 designer coloured fibre inserts, plus rubber.
- UV stabilised, minimising fading including external applications.
- Continuous extruded hinge mechanism allows easy 'roll-up' which assists cleaning of the matwell.
- Rubber backed for quietness.
- Recessed or surface mounted matwell frames.
- Custom manufactured to your dimensions.
- Curved, circular and shaped to your design.
- Low profile.

PRODUCT PERFORMANCE

ABSORPTION 

APPEARANCE 

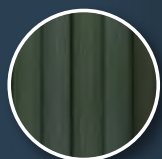
SOIL REMOVAL 

WEAR 

CODE	SIZE
DS200	Custom Made

Up to 6500mm in width

13mm thick



Black
(Ribbed Santoprene)



Charcoal
(Carpet)



Black
(Carpet)



Slate Grey
(Carpet)





ENTRANCE MATS - OUTDOOR



Clean Loop Mat

PRODUCT PERFORMANCE

ABSORPTION

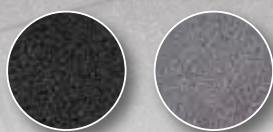
APPEARANCE    

SOIL REMOVAL     

WEAR    

CODE	SIZE
CES	450 x 750mm
CE23	600 x 900mm
CE35	900 x 1500mm
CE46	1200 x 1800mm
CEB1200	1200mm Wide Runner

12mm thick



Black

Grey

FEATURES

- Can be used indoors or outdoors.
- Give a powerful scrub to the base of footwear.
- Collects dirt and debris from footwear and hides it from sight.
- Easy to clean - can be hosed, shaken or vacuumed out.

Rubber Brush Scraper

FEATURES

- Heavy duty outdoor scraper mat.
- Rubber studs dislodge dirt from shoes.
- Slip resistant base.
- Ramped edge for added safety.
- Excellent outdoor mat.

PRODUCT PERFORMANCE

ABSORPTION

APPEARANCE   

SOIL REMOVAL     

WEAR    

CODE	SIZE
RBB	610 x 810mm
RBM	710 x 1070mm
RBL	910 x 1830mm

11mm thick



PVC Backed Coir - Natural

PRODUCT PERFORMANCE

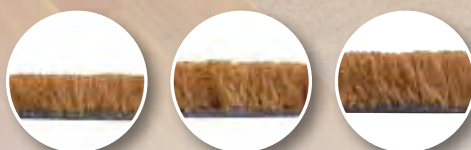
ABSORPTION

APPEARANCE

SOIL REMOVAL

WEAR

CODE	SIZE
PBC17NAT1	17mm(T), 1000mm(W)
PBC17NAT2	17mm(T), 2000mm(W)
PBC24NAT1	24mm(T), 1000mm(W)
PBC24NAT2	24mm(T), 2000mm(W)
PBC30NAT1	30mm(T), 1000mm(W)
PBC30NAT2	30mm(T), 2000mm(W)



17mm Thick

24mm Thick

30mm Thick

FEATURES

- Indoor or covered outdoor mat for high traffic entrances
- High moisture absorption
- Coarse coir bristles provide excellent scraping to the base of footwear
- PVC backing reduces the dislodging of coir fibres

PVC Backed Coir - Coloured

PRODUCT PERFORMANCE

ABSORPTION

APPEARANCE

SOIL REMOVAL

WEAR

CODE	SIZE
PBC17BLK2	17mm(T), 2000mm(W)
PBC17GRY2	17mm(T), 2000mm(W)



FEATURES

- Indoor or covered outdoor mat for high traffic entrances
- High moisture absorption
- Coarse coir bristles provide excellent scraping to the base of footwear
- PVC backing reduces the dislodging of coir fibres
- Available in black or grey



Black

Grey



Promotional Coir

PRODUCT PERFORMANCE

ABSORPTION

APPEARANCE

SOIL REMOVAL

WEAR

CODE	SIZE
PCI	350 x 600mm
PC2	400 x 680mm
PC3	450 x 750mm
PC4	500 x 850mm
PC5	550 x 900mm

23mm thick



FEATURES

- Latex edges.
- High moisture absorption.
- Excellent scraping quality.
- Environmentally friendly.

Super Scraper

PRODUCT PERFORMANCE

ABSORPTION

APPEARANCE

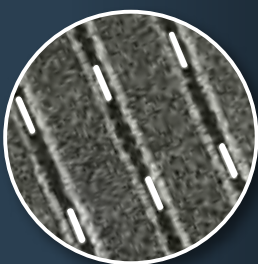
SOIL REMOVAL

WEAR

CODE	SIZE
SS200	2000mm wide

15mm thick

Custom Sizes Available



FEATURES

- Starting soil prevention outside the building.
- The ideal solution for busy commercial entrances.
- Can be cut to measure in any direction without fraying.
- Moisture escapes easily through drainage slots.
- Available edged for loose laying or unedged for recessing.





LOGO MATS



Logo Mat - Inkjet Plus

FEATURES

- A great way to get your message across to everyone that comes through your door.
- Hard wearing nylon plush pile surface effectively wipes and dries footwear.
- Nitrile rubber backing and borders, will not crack or curl.
- Can be machine washed.
- Used in medium to high traffic entrances, indoor or outdoor.

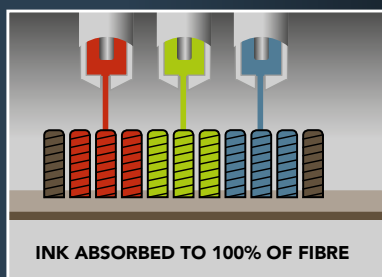
PRODUCT PERFORMANCE

ABSORPTION	✓✓✓✓
APPEARANCE	✓✓✓✓
SOIL REMOVAL	✓✓✓
WEAR	✓✓✓

CODE	SIZE
LM23	600 x 850mm
LM34	850 x 1200mm
LM35	850 x 1500mm
LM310	850 x 3000mm
LM46	1150 x 1750mm
LM48	1150 x 2400mm
LMS	Custom Size

7mm thick

Custom Sizes Available



Please note that the manufacturing process may result in minor variations between colours and definition of the artwork above and on the finished product.



Logo Mat

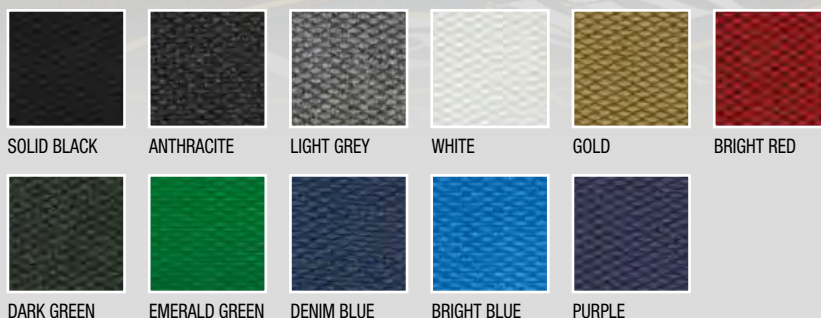
Tough Scrape Design

PRODUCT PERFORMANCE

ABSORPTION	✓✓✓✓✓
APPEARANCE	✓✓✓✓✓
SOIL REMOVAL	✓✓✓✓✓
WEAR	✓✓✓✓✓

CODE	SIZE
FPTS	Made to measure

8mm thick



FEATURES

- Hard wearing and heavy duty mat for high traffic entrance ways
- High absorbing surface holds large amounts of liquid.
- Pebble patterned pattern scrubs shoes effectively.
- Available without edging for recessing or edged for loose laying



Logo Mat

Absorba Design

PRODUCT PERFORMANCE

ABSORPTION	✓✓✓✓✓
APPEARANCE	✓✓✓✓✓
SOIL REMOVAL	✓✓✓✓✓
WEAR	✓✓✓✓✓

CODE	SIZE
FPAB23	600 x 850mm
FPAB35	850 x 1440mm
FPAB46	1440 x 1690mm



FEATURES

- Ultra absorbent surface holds large amounts of liquid.
- Raised square pattern scrubs shoes effectively.
- Reinforced squares prevents pile from crushing to extend mat life.
- Gripper back minimises mat movement on floors.
- Raised dam border traps collected debris and moisture on mat.



Logo Mat True Grip

PRODUCT PERFORMANCE

ABSORPTION

APPEARANCE   

SOIL REMOVAL     

WEAR     

CODE	SIZE
FPTG23	750 x 900mm
FPTG35	900 x 1500mm
FPTG46	1200 X 1800mm

7mm thick



FEATURES

- A great way to get your message across to everyone that comes through your door.
- Raised lugs on mat surface ensure a tough scrub in cleaning mud and solid dirt from footwear.
- Made from nitrile rubber which will not crack or curl.
- Used in high traffic areas outdoors.

Logo Mat Coir Design

PRODUCT PERFORMANCE

ABSORPTION    

APPEARANCE  

SOIL REMOVAL    

WEAR   

CODE	SIZE
FPCM	Made to your requirement



FEATURES

- A great way to get your message across to everyone that comes through your door.
- Available in PVC Backed Coir for recessed matting or as loose lay Coir Mats.



Natural



Black



Grey

(17mm thick only)



Safety Message Mats

PRODUCT PERFORMANCE

ABSORPTION

APPEARANCE

SOIL REMOVAL

WEAR

CODE	SIZE
LM35STS	900 x 1500mm
LM35WYS	900 x 1500mm
LM35SSH	900 x 1500mm

9mm thick



FEATURES

- Hard wearing nylon plush pile makes for a clean cut image with a long life.
- PVC backing and borders.

Message Mats

PRODUCT PERFORMANCE

ABSORPTION

APPEARANCE

SOIL REMOVAL

WEAR

CODE	SIZE
LM35WEL	900 x 1500mm

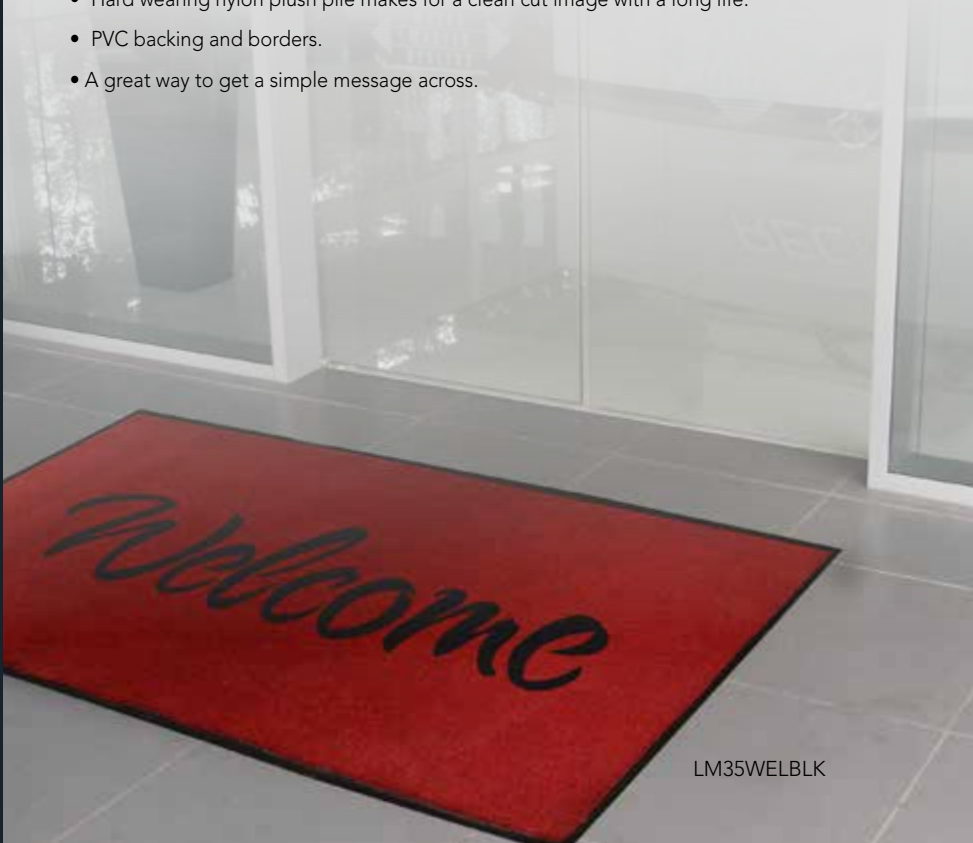
9mm thick



LM35WELGRY



LM35WELRED



LM35WELBLK

FEATURES

- Hard wearing nylon plush pile makes for a clean cut image with a long life.
- PVC backing and borders.
- A great way to get a simple message across.



CHAIR MATS



Anchormat Pacific

5 YEAR

WARRANTY

IN WRITING!



CODE	SIZE	STYLE
AMP34G	915 x 1220mm	Secretary (With Lip)
AMP45G	1150 x 1350mm	Executive (With Lip)
AMP50G	1160 x 1510mm	Diplomat (Rectangle)

FEATURES

- Used on commercial carpets **6mm thick** including underlay.
- Protects floorcoverings from wear and tear from chair castors.
- Greatly reduces wear on office chair wheels and bases.
- Allows chair wheel movements to be easier on your back.
- Can be fully recycled after use.
- Contains no banned substances.
- 5 year limited warranty.



CARPET
UNDERLAY (IF ANY)
CONCRETE / TIMBER

Anchormat
PACIFIC
THE QUALITY CHAIR MAT

Anchormat Heavyweight

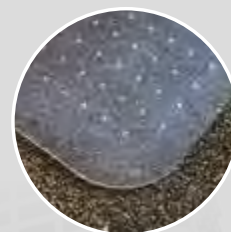
5 YEAR

WARRANTY

IN WRITING!



CODE	SIZE	STYLE
AMH34G	915 x 1220mm	Secretary (With Lip)
AMH45G	1150 x 1350mm	Executive (With Lip)
AMH50G	1160 x 1510mm	Diplomat (Rectangle)



FEATURES

- Used on commercial carpets **6 - 12mm thick** including underlay.
- Protects floorcoverings from wear and tear from chair castors.
- Greatly reduces wear on office chair wheels and bases.
- Allows chair wheel movements to be easier on your back.
- Can be fully recycled after use.
- Contains no banned substances.
- 5 year limited warranty.



CARPET
UNDERLAY (IF ANY)
CONCRETE / TIMBER

Anchormat
HEAVYWEIGHT
THE QUALITY CHAIR MAT

Anchormat Deluxe

5 YEAR

WARRANTY

IN WRITING!



CODE	SIZE	STYLE
AMD34G	915 x 1220mm	Secretary (With Lip)
AMD45G	1150 x 1350mm	Executive (With Lip)
AMD50G	1160 x 1510mm	Diplomat (Rectangle)

FEATURES

- Used on commercial carpets **12 - 30mm thick** including underlay.
- Protects floorcoverings from wear and tear from chair castors.
- Greatly reduces wear on office chair wheels and bases.
- Allows chair wheel movements to be easier on your back.
- Can be fully recycled after use.
- Contains no banned substances.
- 5 year limited warranty.



CARPET
UNDERLAY (IF ANY)
CONCRETE / TIMBER

Anchormat
DELUXE
THE QUALITY CHAIR MAT

Anchormat No Anchors

5 YEAR

WARRANTY

IN WRITING!



FEATURES

- Used on hard floors such as tiles, timber, polished concrete or vinyl.
- Protects floorcoverings from wear and tear from chair castors.
- Greatly reduces wear on office chair wheels and bases.
- Allows chair wheel movements to be easier on your back.
- Can be fully recycled after use.
- Contains no banned substances.
- 5 year limited warranty.

CODE	SIZE	STYLE
AMH34S	915 x 1220mm	Secretary (With Lip)
AMH45S	1150 x 1350mm	Executive (With Lip)
AMH50S	1160 x 1510mm	Diplomat (Rectangle)



Anchormat
NO ANCHORS
THE QUALITY CHAIR MAT

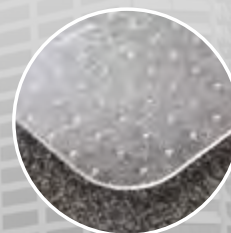
Anchormat Custom Cut



CODE	SIZE	STYLE
AMH1220G	1220mm wide	Anchors
AMH1220S	1220mm wide	No Anchors
AMH1525G	1525mm wide	Anchors



No Anchors



Anchors

FEATURES

- Anchor backed chair mat used on commercial carpets or tiles **9mm thick** including underlay.
 - No anchors backed chair mat used on hard floors such as tile, timber, polished concrete and vinyl.
 - Protects floorcoverings from wear and tear from chair castors.
 - Greatly reduces wear on office chair wheels and bases.
 - Allows chair wheel movements to be easier on your back.
 - Can be fully recycled after use.
 - Contains no banned substances.
- * Available with or without bevelled edges
- 1 year limited warranty.



Anchormat
CUSTOM-CUT
THE QUALITY CHAIR MAT



FLOOR COVERING





Smart Foam Backed Carpet

CODE	SIZE
SF200-ANT	2m (W) x 50m Roll

Fine Ribbed Polypropylene carpet with non-slip foam backing

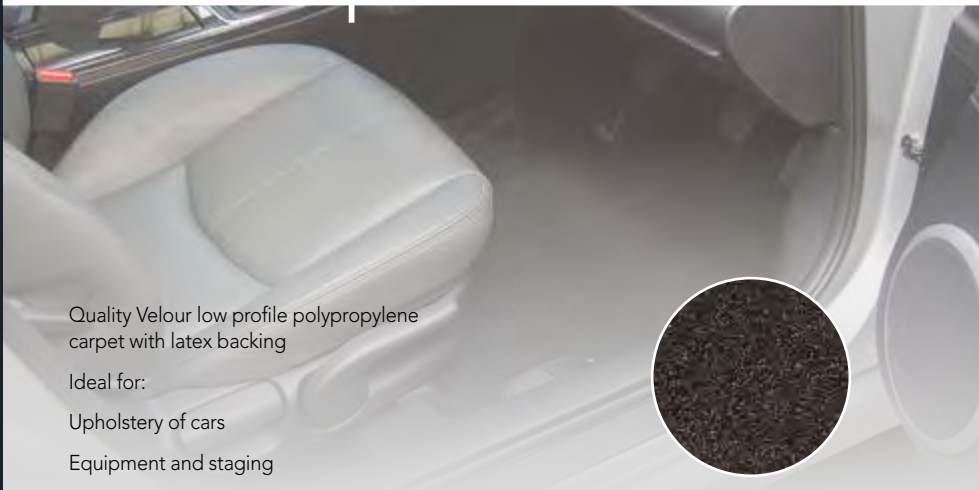
Ideal for:

- Playrooms
- Storage areas
- Floor and wall protection
- Caravans/Motor homes



ANTHRACITE

Car Carpet



CODE	SIZE
CC200-BLK	2m (W) x 40m Roll
CC400-BLK	4m (W) x 40m Roll

Quality Velour low profile polypropylene carpet with latex backing

Ideal for:

- Upholstery of cars
- Equipment and staging



BLACK

Accent Carpet

Low profile Polypropylene carpet with Latex backing.

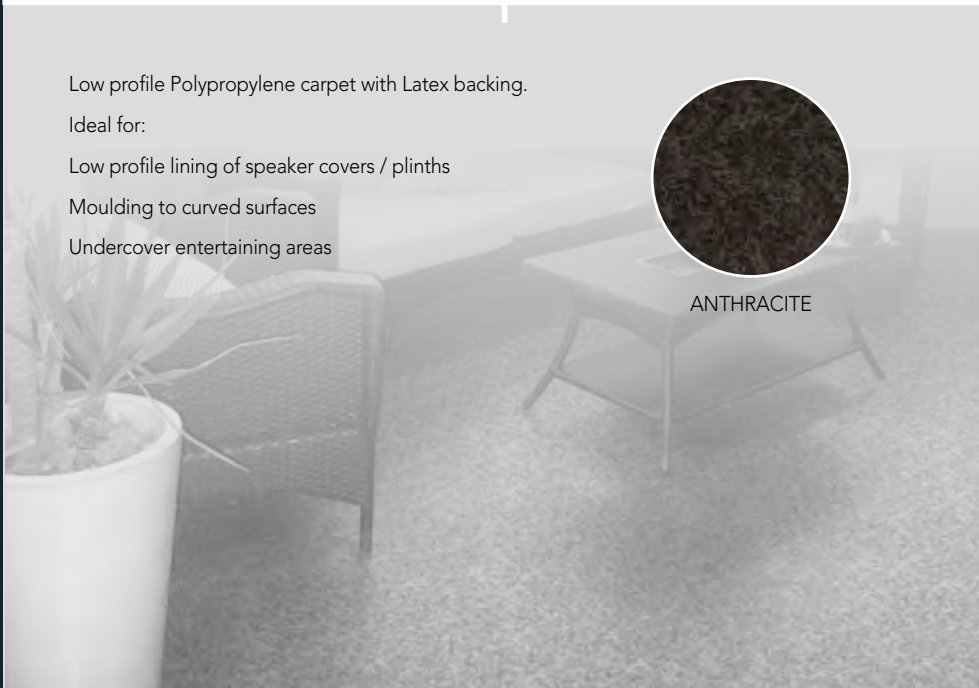
Ideal for:

- Low profile lining of speaker covers / plinths
- Moulding to curved surfaces
- Undercover entertaining areas



ANTHRACITE

CODE	SIZE
AC200-ANT	2m (W) x 30m Roll





Aqua Rib

CODE	SIZE
AQR200-ANT	2m (W) x 40m Roll

Heavy duty indoor/outdoor carpet in Tri-rib design to assist in non-slip with latex backing

Ideal for:

Boating/Marine environments

Poolside

Outdoor entertaining areas



ANTHRACITE

Aqua Velour

CODE	SIZE
AQV200-ANT	2m (W) x 40m Roll

Heavy duty indoor/outdoor carpet in Plush Velour design with latex backing

Ideal for:

Boating/Marine environments

Poolside

Outdoor entertaining areas



ANTHRACITE

Artificial Grass

Polypropylene Grass with marine backing

Ideal for:

Outdoor living/entertaining areas

Playgrounds

Temporary floor protection



CODE	SIZE
EG180	1.8m (W) x 25m Roll





ANTI FATIGUE MATS - DRY AREA



Soft Foot

PRODUCT PERFORMANCE

COMFORT   

GRIP   

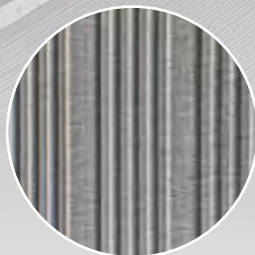
WEAR  

CODE	SIZE
SSM23GRY	600 x 900mm
SSSM23YEL	600 x 900mm
SSM35GRY	900 x 1500mm
SSSM35YEL	900 x 1500mm

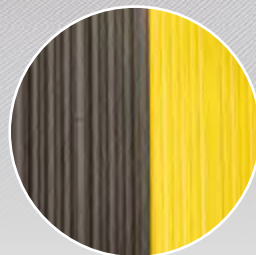
10mm Thick

RUNNER WIDTHS:
900mm

 Custom Sizes Available



Grey



Black/Yellow

FEATURES

- Rugged, durable closed cell vinyl sponge antifatigue matting.
- Comfortable cushion surface with non slip ribs and bevelled edges.
- May be cut to desired shape.
- Easy to clean.
- Ideal for use in warehouses, counters, checkouts or any dry area.
- HACCP certified for use in dry areas

Soft Foot Diamond Deluxe

FEATURES

- Rugged, durable closed cell vinyl sponge antifatigue matting.
- Comfortable cushion surface with non slip ribs and bevelled edges.
- Ideal for use in any dry area such as photocopiers, counters, check outs & warehouses.
- Easy to clean.
- HACCP certified for use in dry areas

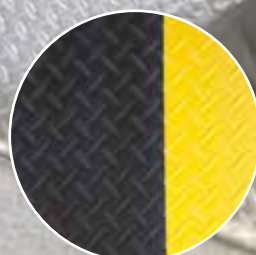
CODE	SIZE
SSDM23BLK	600 x 900mm
SSDM23YEL	600 x 900mm
SSDM35BLK	900 x 1500mm
SSDM35YEL	900 x 1500mm

13mm Thick

RUNNER WIDTHS:
900mm



Black



Black/Yellow

Comfi Tred

PRODUCT PERFORMANCE

COMFORT

GRIP

WEAR

CODE	SIZE
CT23	600 x 900mm
CT34	900 x 1200mm

13mm Thick



FEATURES

- Smooth surface for easy cleaning.
- Unique base designed to relieve the strain of constant standing.
- Suction cups under to prevent movement.
- Bevelled edges for added safety.
- 100% natural rubber.
- HACCP certified for use in dry areas

Ergo Tred

PRODUCT PERFORMANCE

COMFORT

GRIP

WEAR

CODE	SIZE
ASBLK	600 x 900mm (BB)
ASYEL	600 x 900mm (YB)
ETMBLK	900 x 1200mm (BB)
ETMYEL	900 x 1200mm (YB)

(BB) Black Border (YB) Yellow Border

16mm thick

RUNNER WIDTHS:

600mm

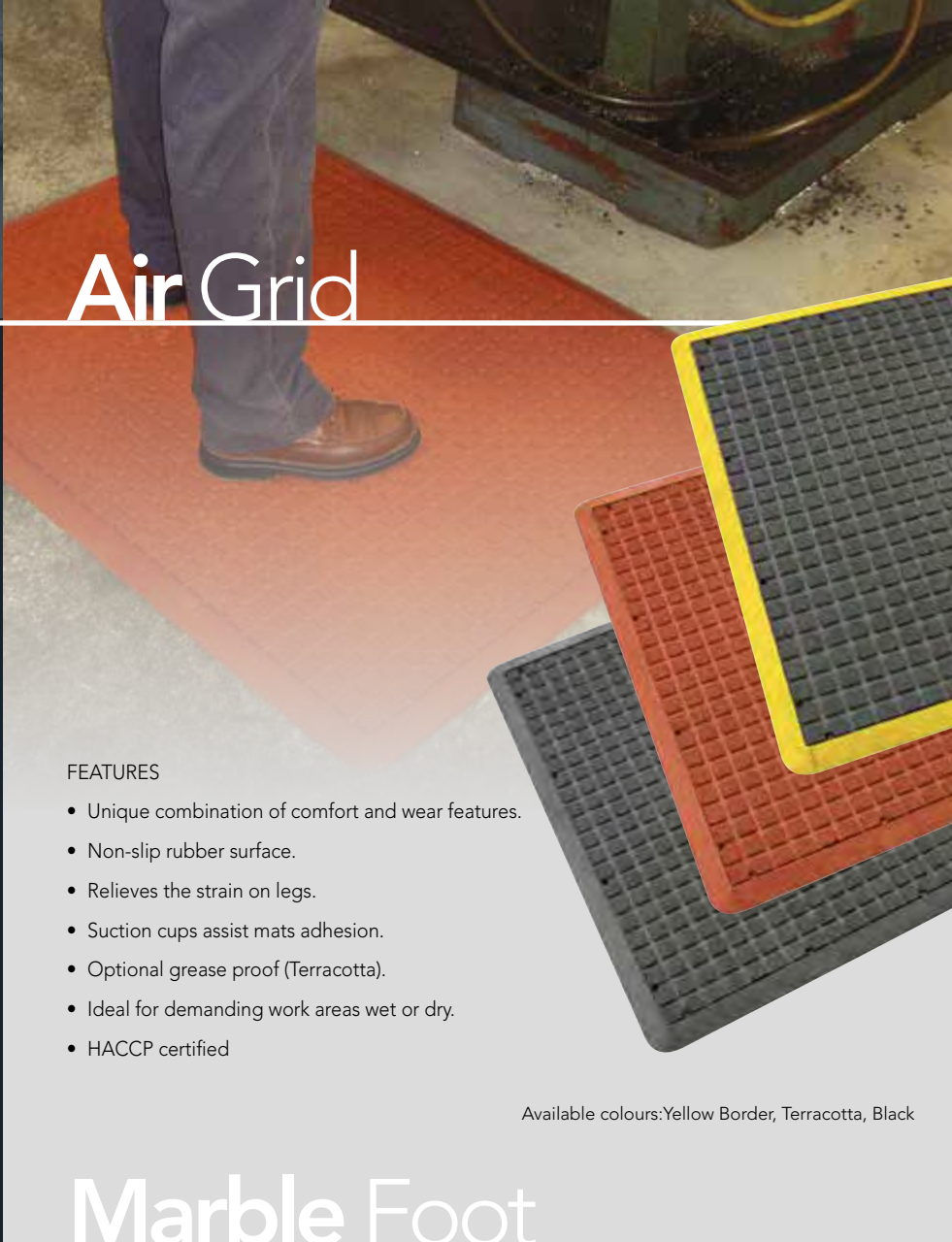
900mm

1200mm



FEATURES

- Suited to relieve the strain of constant standing.
- Domed surface ergonomically designed to improve circulation and give maximum comfort.
- Ideal for checkouts, workstations and counters.
- 100% natural rubber.
- HACCP certified for use in dry areas



Air Grid

PRODUCT PERFORMANCE

COMFORT

GRIP

WEAR

CODE	SIZE
AG23BLK	600 x 900mm
AG23YEL	600 x 900mm (YB)
AG34BLK	900 x 1200mm
AG34G	900 x 1200mm (GP)
AG34YEL	900 x 1200mm (YB)

14mm thick

Custom Sizes Available

RUNNER WIDTHS:

- 600mm
- 900mm
- 1200mm

(GP) Grease Proof (YB) Yellow Border



FEATURES

- Unique combination of comfort and wear features.
- Non-slip rubber surface.
- Relieves the strain on legs.
- Suction cups assist mats adhesion.
- Optional grease proof (Terracotta).
- Ideal for demanding work areas wet or dry.
- HACCP certified

Available colours: Yellow Border, Terracotta, Black

Marble Foot

PRODUCT PERFORMANCE

COMFORT

GRIP

WEAR

CODE	SIZE
MF23	600 x 900mm
MF35	900 x 1500mm

RUNNER WIDTH:

900mm



FEATURES

- Comfortable, resilient sponge base provides relief from constant standing
- Smooth, marble pattern surface is easy to clean
- Anti slip top provides traction
- No glue bond – Mat will not delaminate
- HACCP certified for use in dry areas





Diamond Foot

PRODUCT PERFORMANCE

COMFORT

GRIP

WEAR

CODE	SIZE
DF23BLK	600 x 900mm
DF23YEL	600 x 900mm
DF35BLK	900 x 1500mm
DF35YEL	900 x 1500mm

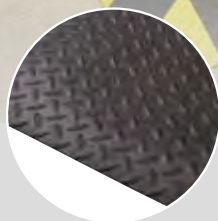
15mm thick

RUNNER WIDTHS:

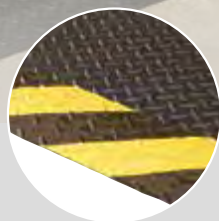
600mm

900mm

1200mm



Solid Black



Chevron



Yellow Border

FEATURES

- Slip resistant, hard wearing and chemical resistant surface.
- Resilient sponge base to enhance comfort.
- Ideal for all dry areas including warehouses and workstations.
- No Glue Bond - mat will not delaminate
- HACCP certified for use in dry areas

Dura Step

PRODUCT PERFORMANCE

COMFORT

GRIP

WEAR

CODE	SIZE
DUR23BLK	600 x 850mm (BB)
DUR23YEL	600 x 850mm (YB)
DUR35BLK	850 x 1500mm (BB)
DUR35YEL	850 x 1500mm (YB)

15mm thick

RUNNER WIDTH:

600 & 1200mm

(yellow border)



FEATURES

- Unique combination of comfort and wear features
- Non-slip, grease, oil and chemical resistant surface.
- Relieves the strain on legs
- Ideal for demanding work areas wet or dry
- HACCP certified for use in dry areas



Solid Black



Chevron Yellow



Comfort Zone

PRODUCT PERFORMANCE

COMFORT

GRIP

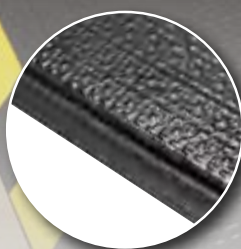
WEAR

CODE	SIZE
CZ23BLK	580 x 875mm (BB)
CZ23YEL	580 x 875mm (YB)
CZ35BLK	870 x 1470mm (BB)
CZ35YEL	870 x 1470mm (YB)

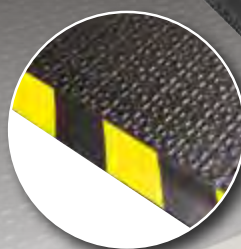
9mm thick

BB = Black Border

YB = Yellow Border



Black Border



Yellow Border

FEATURES

- Comfortable, anti-slip mat for very demanding, dry work areas
- Made from a soft foam encased within nitrile rubber surface and base
- Patterned surface creates excellent traction
- Soft compound provides comfort from constant standing
- Surface made from 100% nitrile rubber which is grease and oil resistant
- Available in black or black and yellow safety borders
- HACCP certified for use in dry areas

Ultra Stand

FEATURES

- Offers extreme comfort properties
- Resists all chemicals, oils, greases and fats.
- Machine washable.
- Anti-microbial.
- Non-slip base & top.
- Closed cell foam does not absorb liquid.

PRODUCT PERFORMANCE

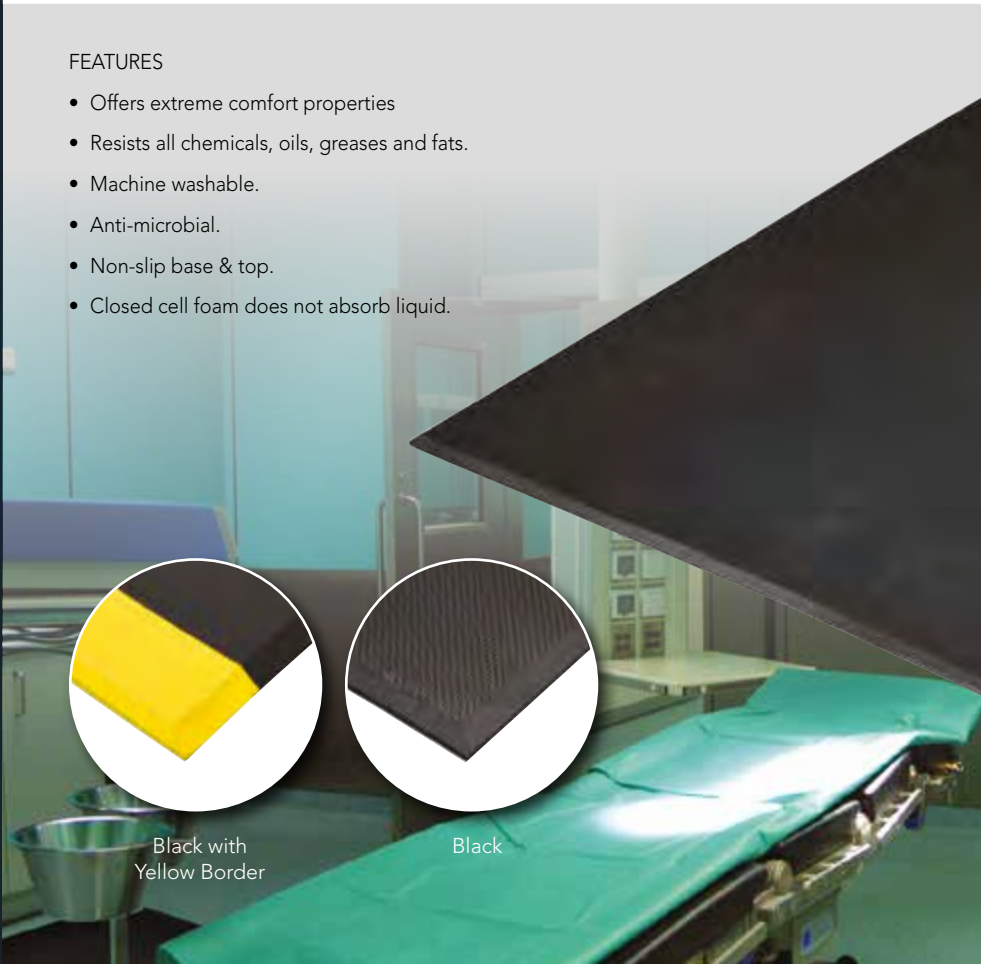
COMFORT

GRIP

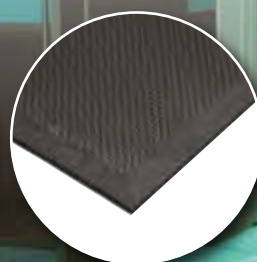
WEAR

CODE	SIZE
US23BLK	600 x 900mm
US23YEL	600 x 900mm
US35BLK	900 x 1500mm
US35YEL	900 x 1500mm

17mm thick



Black with Yellow Border



Black



ANTI FATIGUE MATS - WET AREA



Safety Cushion

PRODUCT PERFORMANCE

COMFORT

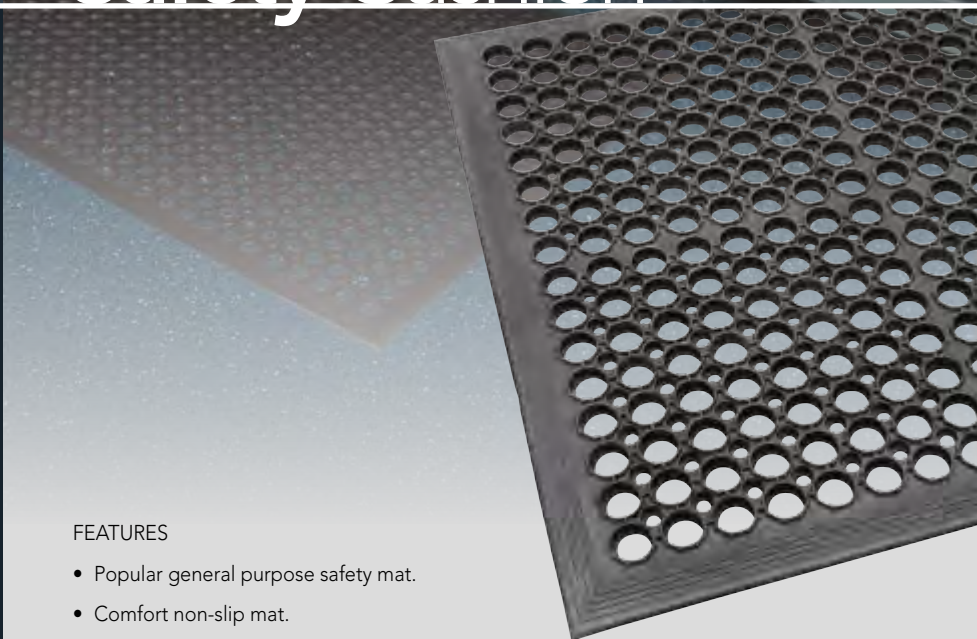
GRIP

WEAR

DRAINAGE

CODE	SIZE
CLS	600 x 900mm
CLN	900 x 1500mm

12mm Thickness



FEATURES

- Popular general purpose safety mat.
- Comfort non-slip mat.
- Bevelled edges for safety.
- Made from natural rubber
- Ideal for factories, kitchens, food preparation areas, boats and behind counters.
- HACCP certified

Safety Cushion

YELLOW BORDER

PRODUCT PERFORMANCE

COMFORT

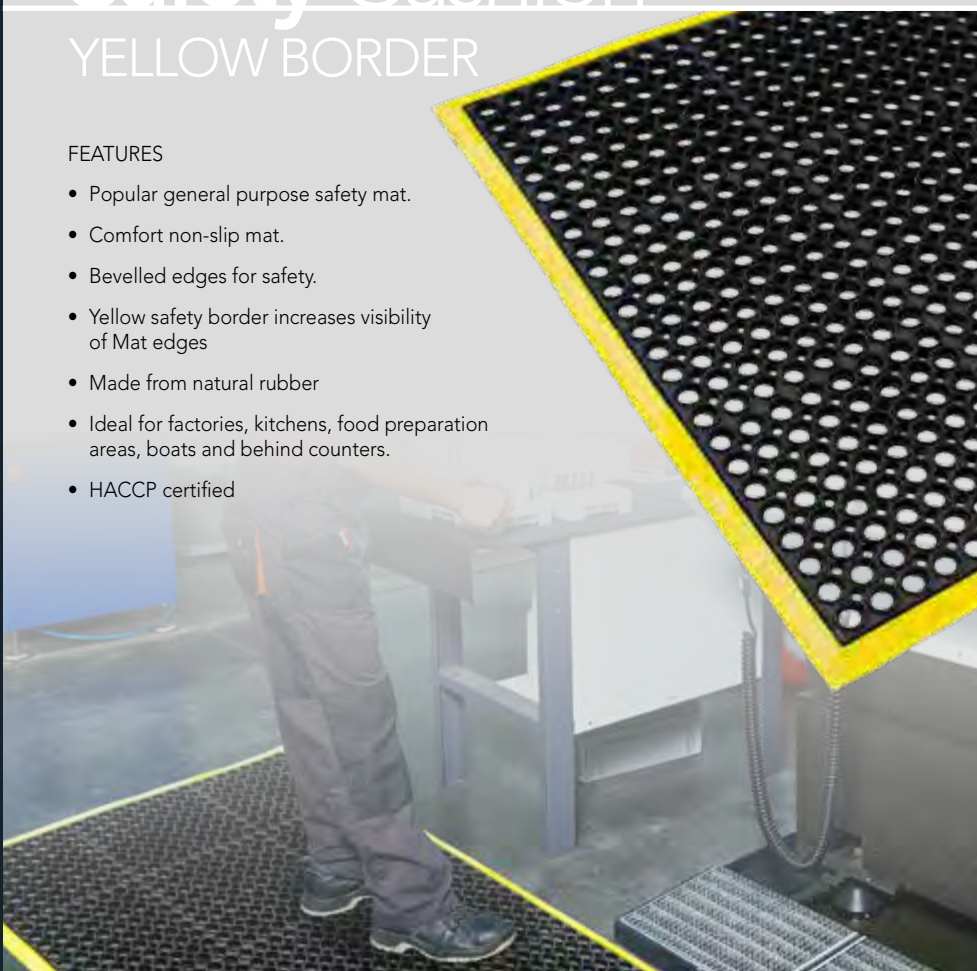
GRIP

WEAR

DRAINAGE

CODE	SIZE
CLY	900 x 1500mm

13mm Thickness



FEATURES

- Popular general purpose safety mat.
- Comfort non-slip mat.
- Bevelled edges for safety.
- Yellow safety border increases visibility of Mat edges
- Made from natural rubber
- Ideal for factories, kitchens, food preparation areas, boats and behind counters.
- HACCP certified

Safety Cushion

GREASE PROOF

PRODUCT PERFORMANCE

COMFORT

GRIP

WEAR

DRAINAGE

CODE	SIZE
CLG	600 x 900mm
CLR	900 x 1500mm

12mm Thickness



FEATURES

- Popular general purpose safety mat.
- Comfort non-slip mat.
- Bevelled edges for safety.
- 50% nitrile rubber content makes mat grease proof
- Ideal for factories, kitchens, food preparation areas, boats and behind counters.
- HACCP certified

Air Grid

PRODUCT PERFORMANCE

COMFORT

GRIP

WEAR

DRAINAGE (HOLED)

CODE	SIZE
AG23BLK	600 x 900mm
AG23YEL	600 x 900mm (YB)
AG34BLK	900 x 1200mm
AG34YEL	900 x 1200mm (YB)
AG34GH	900 x 1200mm (H)

14mm Thickness

Custom Sizes Available

RUNNER WIDTHS:
600mm
900mm
1200mm

(YB) Yellow Border
(H) Holed

FEATURES

- Unique combination of comfort and wear features.
- Made from grease proof rubber.
- Non-slip surface.
- Relieves the strain on legs.
- Suction cups assist mats adhesion.
- Ideal for demanding work areas wet or dry.
- HACCP certified



Drainage Channel

Trapped liquid under the mat flows safely out the channels to save mat aquaplaning.

Engineers Mat

PRODUCT PERFORMANCE

COMFORT

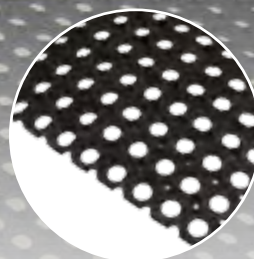
GRIP

WEAR

DRAINAGE

CODE	SIZE
ENG35	1000 x 1500mm
ENG35YEL	1000 x 1500mm (YB)

(YB) Yellow Border
22mm thickness



Black



Yellow Border

FEATURES

- Heavy duty comfort, non-slip mat.
- Large holes allow excellent drainage of spilt liquids and debris.
- Ideal for engineering, agricultural, industrial and steel fabrication work areas.
- Bevelled edges option available in black or yellow.

Comfort Clean

PRODUCT PERFORMANCE

COMFORT

GRIP

WEAR

DRAINAGE

CODE	SIZE
NIK23H	570 x 850mm (holed)
NIK35H	850 x 1440mm (holed)
NIK310H	850 x 2700mm (holed)
NIK46H	1080 x 1690mm (holed)

10mm Thickness

FEATURES

- Ultra comfortable
- Made from a special formula of nitrile rubber.
- Resists all chemicals, oils, greases and fats.
- Non-slip base & top.
- Closed cell foam does not absorb liquid.
- Holed surface to allow for excellent drainage.
- HACCP certified



Holed



Cushion Tread

PRODUCT PERFORMANCE

COMFORT 

GRIP 

WEAR 

DRAINAGE 

CODE	SIZE
TR35	960 x 1560mm

10mm Thickness



FEATURES

- Comfortable, anti-slip mat for very demanding work areas, wet or dry.
- Soft rubber compound provides relief from constant standing.
- Rippled surface creates excellent traction.
- Drainage holes on top allow rapid drainage of spilt liquids.
- Made from 100% nitrile rubber which is grease and oil resistant.
- Anti-microbial additive resists the growth of bacteria on mat.

Ultra Stand

PRODUCT PERFORMANCE

COMFORT 

GRIP 

WEAR 

CODE	SIZE
US23BLK	600 x 900mm
US23YEL	600 x 900mm
US35BLK	900 x 1500mm
US35YEL	900 x 1500mm

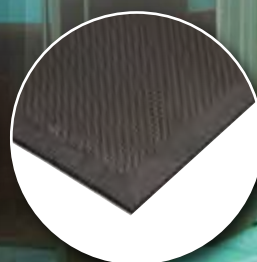
17mm thick

FEATURES

- Offers extreme comfort properties
- Resists all chemicals, oils, greases and fats.
- Machine washable.
- Anti-microbial.
- Non-slip base & top.
- Closed cell foam does not absorb liquid.



Black with Yellow Border



Black



ANTI-SLIP MATTING - WET AREA



True Grip

PRODUCT PERFORMANCE

- COMFORT 
- GRIP    
- WEAR     
- DRAINAGE    (HOLED)

CODE	SIZE
TG35	900 x 1500mm
TG35H	900 x 1500mm (holed)

6mm Thickness



FEATURES

- Safety mat for wet and slippery entrances.
- Raised lugs for maximum grip.
- Bevelled edges for safety.
- Available in solid for dry or light wet areas or holed for wet areas
- 25% Nitrile rubber content makes mat grease and oil resistant
- HACCP certified



Holed

Maxi Grip

PRODUCT PERFORMANCE

- COMFORT 
- GRIP     
- WEAR     
- DRAINAGE

CODE	SIZE
UG35	900 x 1500mm
UG310	900 x 3000mm
UG46	1200 x 1800mm

3.5mm Thickness



FEATURES

- Raised gripper surface provides traction in slippery areas.
- Nitrile rubber compound resists damaging effects of grease and fats.
- Reversible - either side can be used.
- Ideal for wet slippery areas such as ramps, kitchens, machine shops, grocery stores, supermarkets and florists.
- HACCP certified



Aqua Tread

PRODUCT PERFORMANCE

COMFORT   

GRIP     

WEAR   

DRAINAGE

CODE	SIZE
AQT120ANT	1200mm x 10m
AQT120GRY	1200mm x 10m

6mm Thickness



Anthracite



Grey

FEATURES

- PVC beads on surface provides a high level of traction.
- Closed cell PVC base prevents movement and provides a comfortable walking surface.
- UV resistant - Suitable for outdoor or indoor use.
- Can be cut and joined to any size or shape.

Safety Tread

FEATURES

- PVC beads on surface provides a high level of traction.
- Closed cell PVC base prevents movement and provides a comfortable walking surface.
- UV resistant - Suitable for outdoor or indoor use.
- Can be cut and joined to any size or shape.
- Drainage holes and channels ensure the surface remains dry.

PRODUCT PERFORMANCE

COMFORT   

GRIP    

WEAR    

DRAINAGE    

CODE	SIZE
SW900 ANT	900mm x 10m
SW1200 ANT	1200mm x 10m
SW1800 ANT	1800mm x 10m

7mm Thickness



Anthracite

Clean Loop Matting

PRODUCT PERFORMANCE

COMFORT

GRIP

WEAR

DRAINAGE

CODE	SIZE
CEU1200	1200mm x 10m roll

14mm Thickness



Black

Blue

Grey

FEATURES

- Can be used indoors or outdoors
- Allows dirt and water to pass through mat easily, keeping mat surface clean and dry
- Eliminates slips in areas where traction is needed
- Used recessed in entrance ways or beside pools, in showers and much more

Safeguard Matting

PRODUCT PERFORMANCE

COMFORT

GRIP

WEAR

DRAINAGE

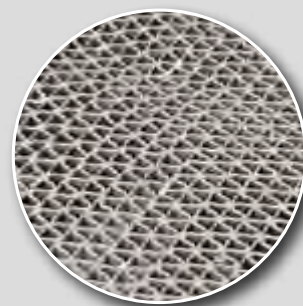
CODE	SIZE
ZD1200R	1200mm x 10m roll

(8.5mm Thick)

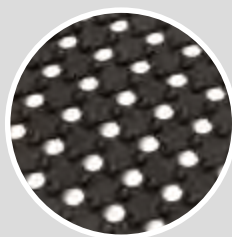


FEATURES:

- Hardwearing PVC 'Z' Construction.
- Non-slip surface quickly drains for safety.
- Comfortable surface for barefoot traffic.
- Easy to clean by hose.
- Use indoor or outdoor.
- Ideal for pools, showers.
- Edging available.



Utility Matting



Backing

PRODUCT PERFORMANCE

COMFORT

GRIP

WEAR

DRAINAGE

CODE	SIZE
UM900R	900mm x 10m
UM1800R	1800mm x 10m

10mm Thickness

Custom Sizes Available



FEATURES

- Versatile safety matting on a roll.
- Anti-slip mat can be cut to any required length, width or shape.
- Comfortable surface with drainage holes.
- Raised backing to assist drainage.
- Ideal for factories, boats, utes, vans etc.
- Suction caps on underside for better floor adhesion.
- Edging available.
- HACCP certified



Tubular Safe

PRODUCT PERFORMANCE

COMFORT

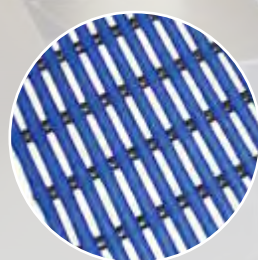
GRIP

WEAR

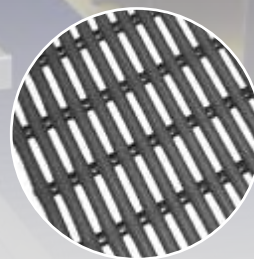
DRAINAGE

CODE	SIZE
TT	900mm x 12m roll

12mm Thickness



Blue



Black

FEATURES

- PVC tubular matting can be cut to any length or shape.
- Soft surface drains and resists oils, chemicals and alkalis.
- Ideal for wet areas like bars, boats, workshops, swimming pools and, showers.
- Made in Australia.

Sure Grippa

FEATURES

- PVC solid matting can be cut to any length or shape.
- Soft surface drains and resists oils, chemicals and alkalis.
- Ideal for wet areas like bars, boats, workshops, swimming pools, showers.
- Heavy duty construction.
- Made in Australia
- HACCP certified



Black



Blue

PRODUCT PERFORMANCE

COMFORT

GRIP

WEAR

DRAINAGE

CODE	SIZE
SG	900mm x 12m roll

12mm Thickness





MODULAR SAFETY MATS



Solid Top Anti-fatigue

PRODUCT PERFORMANCE

COMFORT

GRIP

WEAR

CODE	SIZE
STAE - end	700 x 800mm
STAC - centre	700 x 800mm
STAS - single	700 x 800mm

15mm Thickness



FEATURES

- Versatile and economical anti-fatigue system.
- Smooth surface for easy cleaning.
- Suitable for light trolleys.
- Modules fit together easily & quickly.
- Slip resistant top.
- Ideal for counters, workstations and production lines.

Bubble Mat

FEATURES

- Maximum comfort system for dry work areas.
- Modules fit together easily and quickly.
- Safety yellow border comes standard with this item.



PRODUCT PERFORMANCE

COMFORT

GRIP

WEAR

CODE	SIZE
BME23YEL - end	600 x 900mm
BME34YEL - end	900 x 1200mm
BMC23YEL - centre	600 x 900mm
BMC34YEL - centre	900 x 1200mm

16mm Thickness



Comfort Link - Holed

PRODUCT PERFORMANCE

COMFORT ✓✓✓✓

GRIP ✓✓✓

WEAR ✓✓✓✓

DRAINAGE ✓✓✓✓✓



Edging



Joining

FEATURES

- Tiles easily link together to form a desired shape
- Large holes on surface allow rapid drainage
- Soft rubber compound provides relief from constant standing
- Tiles unlink quickly and effortlessly for easy cleaning
- Edges available in yellow

CODE	DESCRIPTION	SIZE
TE	Tile - Holed	900 x 900mm
TEEF	Edge - Female	900 x 75mm
TEEM	Edge - Male	900 x 75mm
TEECF	Corner + Edge - Female	975 x 75mm
TEECM	Corner + Edge - Male	975 x 75mm

16mm Thickness

Comfort Link - Solid

FEATURES

- Tiles easily link together to form a desired shape
- Smooth surface is easy to clean
- Soft rubber compound provides relief from constant standing
- Tiles unlink quickly and effortlessly for easy cleaning
- Edges available in yellow

CODE	DESCRIPTION	SIZE
TES	Tile - Solid	900 x 900mm
TEEF	Edge - Female	900 x 75mm
TEEM	Edge - Male	900 x 75mm
TEECF	Corner + Edge - Female	975 x 75mm
TEECM	Corner + Edge - Male	975 x 75mm

16mm Thickness

Comfort Link - GP

FEATURES

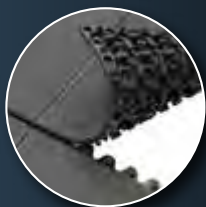
- Tiles easily link together to form a desired shape
- Large holes on surface allow rapid drainage
- Soft rubber compound provides relief from constant standing
- Tiles unlink quickly and effortlessly for easy cleaning
- Grit Top option give unparalleled traction
- Edges available in yellow

CODE	DESCRIPTION	SIZE
TEG	Tile - Grease Proof (Terracotta)	900 x 900mm
TEEF	Edge - Female	900 x 75mm
TEEM	Edge - Male	900 x 75mm
TEECF	Corner + Edge - Female	975 x 75mm
TEECM	Corner + Edge - Male	975 x 75mm

16mm Thickness



Edging



Joining

PRODUCT PERFORMANCE

COMFORT

GRIP

WEAR

DRAINAGE



Edging



Joining

PRODUCT PERFORMANCE

COMFORT

GRIP

WEAR

DRAINAGE

Comfort Link - Grit Top



Edging



Joining

FEATURES

- Tiles easily link together to form a desired shape
- Large holes on surface allow rapid drainage
- Soft rubber compound provides relief from constant standing
- Tiles unlink quickly and effortlessly for easy cleaning
- Grit Top option gives unparalleled traction
- Edges available in yellow

PRODUCT PERFORMANCE

COMFORT

GRIP

WEAR

DRAINAGE

CODE	DESCRIPTION	SIZE
TEA	Tile - Grit Top (Black)	900 x 900mm
TEEF	Edge - Female	900 x 75mm
TEEM	Edge - Male	900 x 75mm
TEECF	Corner + Edge - Female	975 x 75mm
TEECM	Corner + Edge - Male	975 x 75mm

16mm Thickness

Comfort Clean Modular

PRODUCT PERFORMANCE

COMFORT

GRIP

WEAR

DRAINAGE (HOLED)

CODE	SIZE
NIK33HC	970 x 930mm (centre)
NIK33HE	970 x 950mm (end)

11mm thick

FEATURES

- Mat is resistant to greases, oils and common chemicals
- Provides relief from constant standing
- Raised lugs on surface provides excellent traction and keeps mat surface dry
- Bevelled edges eliminate trips or falls on mat edges
- Drainage holes allow liquid to drain from mat quickly and easily



SPECIALISED SAFETY MATS



Boot Dip Mat



CODE	SIZE
------	------

BDM	980 x 810 x 47mm
-----	------------------

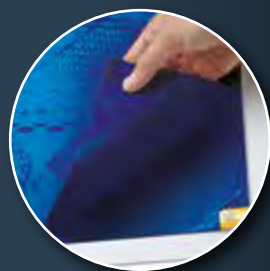
47mm Thickness



FEATURES

- Hundreds of bristles encourage boot cleaning whilst trapping dirt.
- Raised walls to hold anti-germ detergent or any liquid for hygienic cleaning.
- Yellow edges for high visibility.
- Cross grip rear design firmly holds the mat to floor.
- HACCP certified

Tacky Mat



Tear offs are numbered

CODE	SIZE
------	------

TM23	600 x 900mm
------	-------------

TM34	915 x 1143mm
------	--------------

3.5mm Thickness

FEATURES

- Designed to attract and contain dust and dirt.
- Effectively removes dirt from shoes and castors.
- Anti-Microbial Surface is perfect for clean rooms, labs, surgical rooms and medical offices.
- Simply peel off sheet when contaminated.
- Available in 30 disposable sheet pads.



Dura-Step Weldsafe

PRODUCT PERFORMANCE

COMFORT

GRIP

WEAR

CODE	SIZE
DUR23BLK	600 x 850mm (BB)
DUR23YEL	600 x 850mm (YB)
DUR35BLK	850 x 1500mm (BB)
DUR35YEL	850 x 1500mm (YB)

15mm thick

RUNNER WIDTH:

600 & 1200mm
(yellow border)



BB = Black Border
YB = Yellow Border



PRODUCT PERFORMANCE

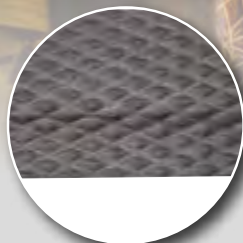
COMFORT

WEAR

GRIP

CODE	SIZE
WMC	700 x 800mm centre
WME	700 x 800mm end
WMS	700 x 800mm single

15mm Thickness



Solid Black

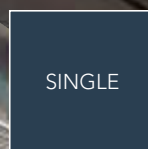
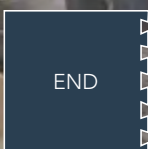
FEATURES

- Ultra-comfortable relief from constant standing
- Mat surface is resistant to sparks caused from welding
- Rippled surface provides user with excellent traction
- Durable closed cell foam base will not absorb liquid
- Nitrile rubber surface resists damaging effects of greases, oils and common chemicals
- Easy to clean by brushing, mopping or wiping

Welding Mat

FEATURES

- Specially designed to resist welding flux and grinding sparks of 1300 to 1500 centigrade for less than 3 seconds.
- Excellent durability and highly resistant surface for load bearing characteristics.
- Can be used in both greasy / dry environment.
- Reduces fatigue during prolonged standing.
- Available with designs for non-slip surfaces.



Electro-Weld Mat

PRODUCT PERFORMANCE

COMFORT ✓✓

GRIP ✓✓✓✓

WEAR ✓✓✓✓✓

CODE	SIZE
EW23	600 x 900mm
EW33	900 x 900mm
EW35	900 x 1500mm
EW900	900mm wide x 10m

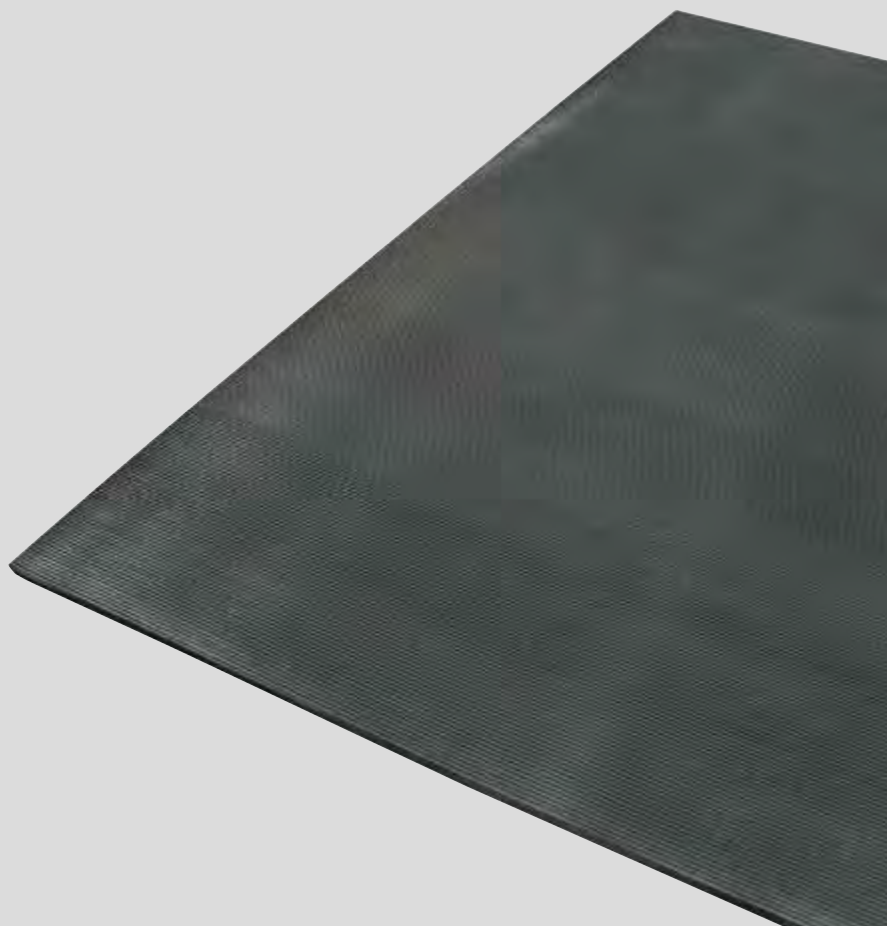
Custom Sizes
Available



Backing

FEATURES

- Ribbed surface provides excellent traction
- Rated dielectric strength up to 30,000 volts (VAC)
- Protects workers against electric current
- Withstands molten metal and sparks up to 1500 degrees celcius for less than 3 seconds
- Tested to, and conforms to Australia Standards AS/NZS 2978:1995
- Tested to, and conforms to International Standards ASTM D-178 Type II Class 2



Switchboard Corrugated

Non Conductive

Solid Back

PRODUCT PERFORMANCE

COMFORT ✓

WEAR ✓✓✓

GRIP ✓✓✓✓

CODE	SIZE
SCR	900mm runner

6.5mm Thickness

Custom Sizes Available

FEATURES

- Durable 1/4" PVC corrugated runner improves safety with increased traction.
- Made to protect workers from high voltage equipment.
- Easy to clean surface.
- Dielectric strength up to 30,000 volts (VAC).
- Recommended maximum usage - 17,000 volts (VAC).

Fire Resistant Mat

FEATURES

- Ideal for fire hazardous areas, as the mat is inherent with a combination of properties for resisting fire.
- Does not emit chlorine or chlorinated gaseous compounds, such as hydrochloric acid fumes, sulfur mono-chloride and chlorine etc.
- Very low smoke emission.
- Excellent resistance to general weathering conditions and has inherent ageing resistance.
- Very good load bearing characteristics.
- Good wear and tear properties coupled with strength for more durability.
- Tested according to EN 13501-1 by Vienna, Austria and has classification Cfl-Sl.
- Recommended for use in public places.

PRODUCT PERFORMANCE

COMFORT ✓✓✓

WEAR ✓✓✓✓

GRIP ✓✓✓✓✓

CODE	SIZE
FR35	900 x 1500mm

24mm Thickness

NON FIRE RESISTANT MAT SAMPLE



Subjected to flame for 40 seconds.



Sample position soon after the burner is removed.



Mat burns with bright flame & fire propagation visible with heavy smoke.

FIRE RESISTANT MAT SAMPLE



Subjected to flame for 40 seconds.



Sample position soon after the burner is removed.



Sample does not propagate fire, slight smoke only.

Softstat Dissipative Matting

PRODUCT PERFORMANCE

COMFORT 

WEAR 

GRIP 

CODE	SIZE
CDF900	900mm runner
CDF23	600 x 900mm
CDF35	900 x 1500mm
GC	Grounding Cord

14mm Thickness

 Custom Sizes Available

FEATURES

- Durable electrically conductive PVC surface NGB bonded to a resilient anti-fatigue closed-cell PVC foam base.
- Mat provides comfort for workers while protecting equipment from static electricity.
- Conductive diamond surface removes static electricity from workers preventing damage to sensitive electronic equipment and systems as well as providing a non slip surface.
- RTT - 10^4 - 10^5 ohms.
- RTG - 10^4 - 10^5 ohms.
- Bevelled edges on all mats.
- Snap will be installed on all stock mats if requested.



1.5mtr grounding cord optional

Conductive Diamond Foot

PRODUCT PERFORMANCE

COMFORT 

WEAR 

GRIP 

CODE	SIZE
STT900	900mm runner
STT23	600 x 900mm
STT35	900 x 1500mm
GC	Grounding Cord

12mm Thickness

FEATURES

- Ergonomically styled anti-fatigue matting designed to provide comfort and relief for aching feet and legs.
- Helps prevent damaging equipment from static electricity.
- RTT - 10^8 - 10^9 ohms.
- RTG - 10^8 - 10^9 ohms.
- 100% closed cell PVC foam.
- Beveled edge for increased safety.
- Material can easily be cut to fit any work area.
- Optional grounding cord available.
- Snap will be installed on all stock mats if requested.



1.5mtr grounding cord optional



INDUSTRIAL RUBBER SHEETING



Rubber Matting Rolls

PRODUCT PERFORMANCE

COMFORT ✓

GRIP ✓✓✓✓

WEAR ✓✓✓✓



Fine Rib



Wide Rib

FEATURES

- Anti-slip surface.
- Hardwearing natural rubber.
- Protects floors.
- Easy to sweep.
- Ideal as floor covering, ute/van flooring, or cut to size.

CODE	THICKNESS	SIZE	SURFACE PATTERN
RMRF100	3.5mm	1000mm x 10m	Fine Rib
RMRF120	3.5mm	1200mm x 10m	Fine Rib
RMRW100	3.5mm	1000mm x 10m	Wide Rib
RMRW180/6	6mm	1800mm x 10m	Wide Rib





MISCELLANEOUS



Tactiles

- Used to assist people with visual impairment, providing early warning of approaching hazard.
- Tiles available with Plain Backing or Self Adhering.
- Studs available Plain Backing, Screw-in or Hammer-in.

COLOURS:

Black
Grey
Yellow
Stainless Steel*

* studs only



CODE	SIZE	STYLE
TCS1	300mm x 300mm	Plain Back
TCP1	300mm x 300mm	Tactile
TSS1	45mm Diameter	Stud

Safety Tapes

Line Marking Tape

- Mark out pathways and lanes

Anti Slip Tapes

- Provides traction on paths and steps
- Available in Black, Clear or Yellow/Black



CODE	SIZE
LMT48	33m x 48mm

CODE	SIZE
AST25	18m x 25mm
AST48	18m x 48mm
AST600	18m x 600mm

Vinyl Carpet Runners

FEATURES

- Clear with herringbone design and grippers underneath.
- Extra thickness for longer life and better appearance.
- Protects floors from dirt and water.

CODE	SIZE
VCP68 (LD)	32m x 685mm
VCP90 (HD)	18m x 920mm
VCP120 (HD)	18m x 1220mm

LD = Light Duty (1mm thick)
HD = Heavy Duty (2.5mm thick)



Light Duty



Heavy Duty

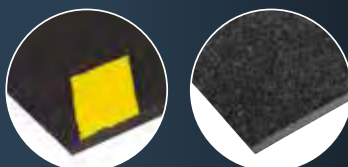
Cable Protector

- Protects cables and cords from damage by foot traffic & trolleys.

CODE	SIZE
CP	68 x 2500mm



Cable Safe



CS1-CHV

CS1-CHL

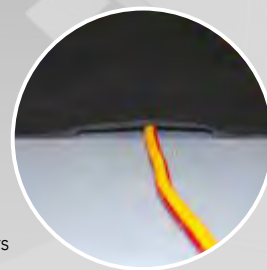
CODE	SIZE
CS1-CHL	500 x 1000mm
CS1-CHV	500 x 1000mm

14mm Thickness



FEATURES

- Safe & effective way to eliminate tripping on cords.
- Specially formulated non-skid backing wont slip on any floor.
- Available in Charcoal colour or Black with Safety Yellow borders



Access Ramps



CODE	SIZE
AR0	900 x 200mm
AR1	1067x 305mm
AR2	1270 x 457mm
AR3	1524 x 610mm

AR0 25mm Thickness
 AR1 32mm Thickness
 AR2 44mm Thickness
 AR3 55mm Thickness

FEATURES

- Easy installation.
- Reduce trip hazards.
- Maintenance free.
- Made from recycled rubber.
- Four standard sizes.
- Can be trimmed to required sizes.



Bar Runners

FEATURES

- Moisture absorbent surface.
- Machine washable / tumble dry.
- Nitrile rubber backed.
- Can be custom printed.



Rubber Bar Runner

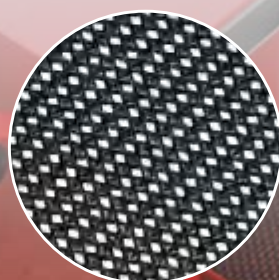


Rubber Bar Runners are a 100% natural rubber mat used to catch drips & spills at drink serving areas.

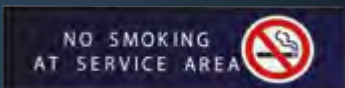
Non-Skid Matting

Uses

- Provides an anti-slip surface
- Provides traction under mats & rugs.
- Ideal for: Car boots, Drawers, Food/Drink trays, Tool boxes.



Heavy Duty



CODE	SIZE
BR925	900 x 250mm
BR1525	1500 x 250mm
BRP925*	900 x 250mm

* Printed

CODE	SIZE
RBR860	80 x 600mm
RBR3045	300 x 450mm

CODE	SIZE
NSMH	1370mm (width)

Knee Saver

PRODUCT PERFORMANCE

COMFORT 

GRIP 

WEAR 

CODE	SIZE
KS12	350 x 525mm

FEATURES

- Comfortable, soft foam compound
- Lightweight
- Built in carry handle
- Made from nitrile rubber

Sure Track Matting

FEATURES

- Protects lawns from vehicle damage.
- Provides traction for bogged vehicles.
- 60 Tonne weight rated
- Made from ultra durable polyethylene.

CODE	SIZE
SH48	1110 x 2400 x 12.7mm

Bottle Brush Mats

CODE	SIZE
BBBS	320 x 330mm
BBM4	500 x 800mm

BBBS

BBM4

FEATURES

- Durable Galvanised wire frame.
- Coir "Bottlebrush" fibres scrub shoes clean.
- Boot Scraper cleans both sides and base of shoes.

matTEK[®]

11 Pullman Place, Emu Plains NSW 2750

Phone: 1300 731 751

sales@mattek.com.au

mattek.com.au