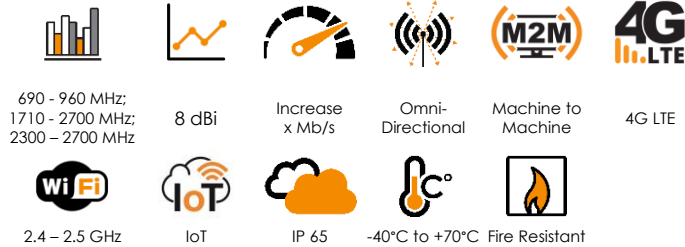


## ANTENNAS | OMNI-292 SERIES

# OMNI-DIRECTIONAL, WIDEBAND LTE ANTENNA

690 - 960 MHz, 1710 - 2700 MHz, 8 dBi



- High performance omni-directional antenna
- Compatible with 4G, 3G and 2G technologies, supports 2.4 GHz Wi-Fi
- Ideal for machine to machine (M2M) applications
- Consistent high gain over a very wide frequency band
- Excellent broadband quality antenna
- Vandal and water-resistant enclosure



## Product Overview

The OMNI-292 is a high gain omni-directional antenna that covers all cellular frequencies bands needed for LTE(4G), but also covers the bands for HSDPA, 3G, EDGE, GPRS, voice and 2.4 GHz LTE and Wi-Fi bands. Its configuration makes it suitable for fixed installations of any cellular frequency band. This is one of the few omni-directional antennas in the world that offers consistent high gain over a very wide frequency band with excellent radiation pattern performance. This makes it a very popular choice with installers because of its base station agile. It is also ideal for machine to machine (M2M) applications that are communicating through GSM network (GPRS/ EDGE/ 3G/ HSPA/ LTE).

## Features

- Medium gain omni-directional antenna
- Lightweight
- Robust and weather resistant
- Operational in the 2.4 – 2.5 GHz Wi-Fi band
- N-Type female connectors so that any cable type or cable length can be connected

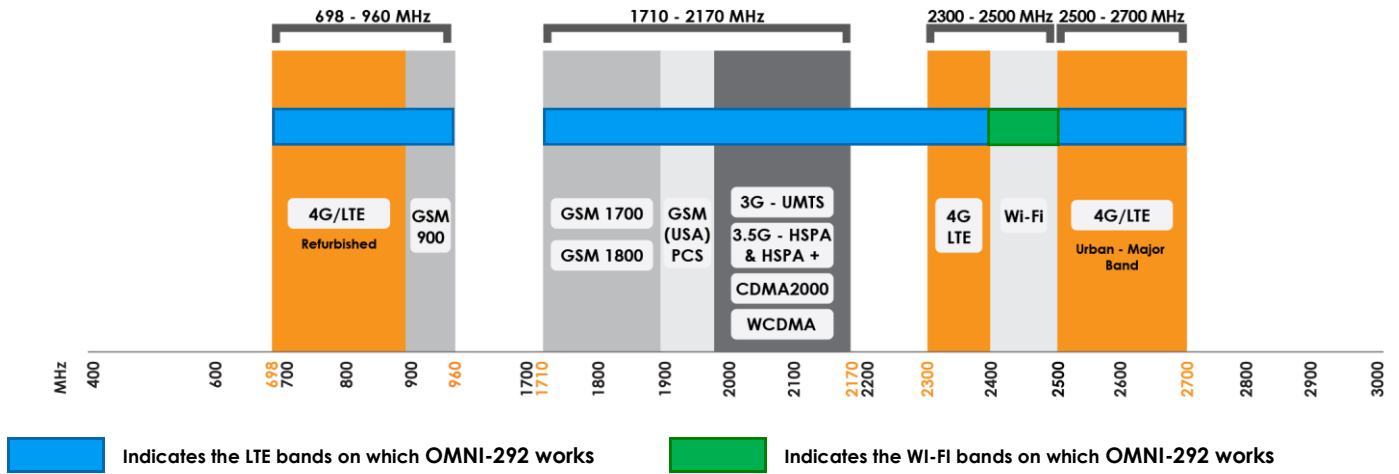
## Application Areas

- Machine to machine (M2M)
- Poor data signal reception (indoor or outdoor)
- Slow data transmission connection
- Unstable connection
- Increases system transmission reliability
- High-end industrial grade router applications
- Mobile offices
- Transportation applications: Caravans, RTV's



### Frequency Bands

The OMNI-292 is an omni-directional antenna that works from 690 - 960 MHz and 1710 - 2700 MHz



### Antenna Overview

Ports	1
SISO / MIMO	SISO
Frequency Bands	690 - 960 MHz 1710 - 2700 MHz
Polarisation	Linear Vertical
Peak Gain	8 dBi
Coax Cable Type	N/A
Coax Cable Length	N/A
Connector Type	N-Type (F)

## Electrical Specifications

<b>Frequency bands:</b>	690 - 960 MHz 1710 - 2700 MHz 2300- 2700 MHz
<b>Gain:</b>	6 dBi @ 690 - 960 MHz 7 dBi @ 1710 - 2700 MHz 8 dBi@ 2300- 2700 MHz
<b>VSWR:</b>	<2:1 Over 90% of the bands
<b>Feed power handling:</b>	10 W
<b>Input impedance:</b>	50 Ohm (nominal)
<b>DC short:</b>	Yes

## Product Box Contents

<b>Antenna:</b>	A-OMNI-0292-V2
<b>Mounting bracket:</b>	Pole up to 50mm diameter wall and Pole mount stainless steel bracket

## Ordering Information

<b>Commercial name:</b>	OMNI-292-V2
<b>Order product code:</b>	A-OMNI-0292-V2
<b>EAN number:</b>	0707273469199

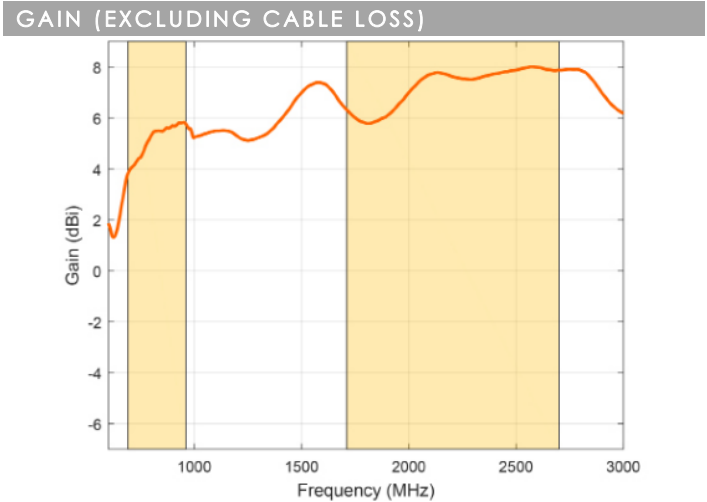
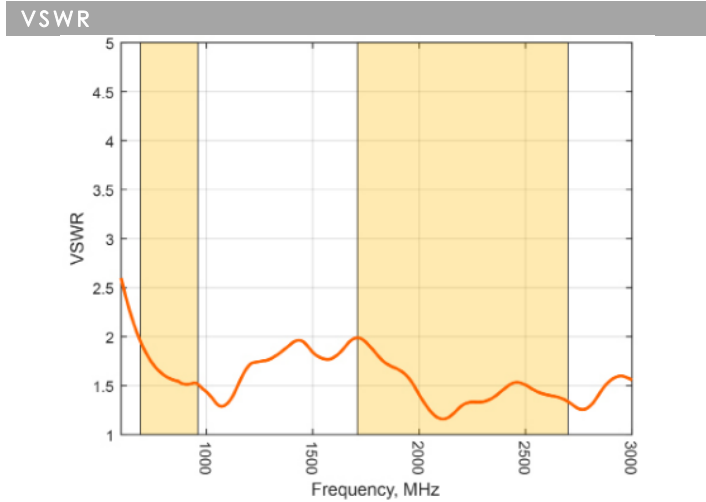
## Mechanical Specifications

<b>Product dimensions</b>	646 mm x Ø71 mm (excl. bracket)
<b>Packaged dimensions:</b>	700 mm x 95 mm x 90 mm
<b>Weight:</b>	0.46 kg
<b>Packaged weight:</b>	1.17 kg
<b>Radome material:</b>	ABS (Halogen Free)
<b>Radome colour:</b>	Pantone – Cool Gray (1C) RAL - 7047
<b>Mounting Type:</b>	Pole and Wall

## Environmental Specifications, Certification & Approvals

<b>Wind Survival:</b>	≤190 km/h
<b>Temperature Range (Operating):</b>	-40°C to +70°C
<b>Environmental Conditions:</b>	Outdoor/Indoor
<b>Water ingress protection ratio/standard:</b>	IP 65
<b>Salt Spray:</b>	MIL-STD 810G/ASTM B117
<b>Operating Relative Humidity:</b>	Up to 98%
<b>Storage Humidity:</b>	5% to 95% - non-condensing
<b>Storage Temperature:</b>	-40°C to +70°C
<b>Enclosure Flammability Rating:</b>	UL 94-HB
<b>Impact resistance:</b>	IK 08
<b>Product Safety &amp; Environmental:</b>	Complies with CE and RoHS standards

**Antenna Performance Plots**



**Voltage Standing Wave Ratio (VSWR)**

VSWR is a measure of how efficiently radio-frequency power is transmitted from a power source, through a transmission line, into a load. In an ideal system, 100% of the energy is transmitted which corresponds to a VSWR of 1:1.

The OMNI-292 delivers superior performance across all bands with a VSWR of 2:1 or better over 90% of the bands.

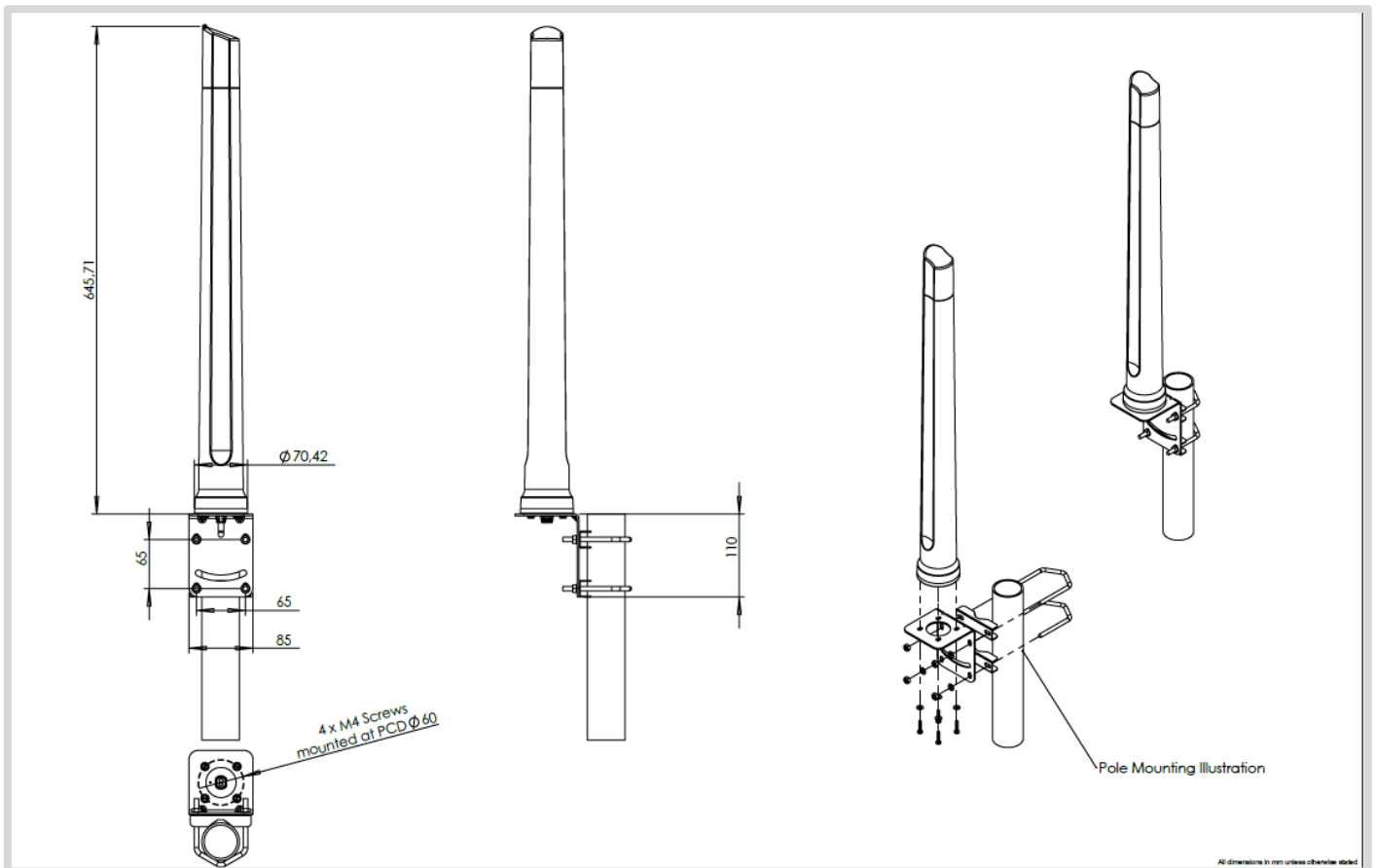
**Gain\* in dBi**

8 dBi is the peak gain across all bands from 690- 2700 MHz.

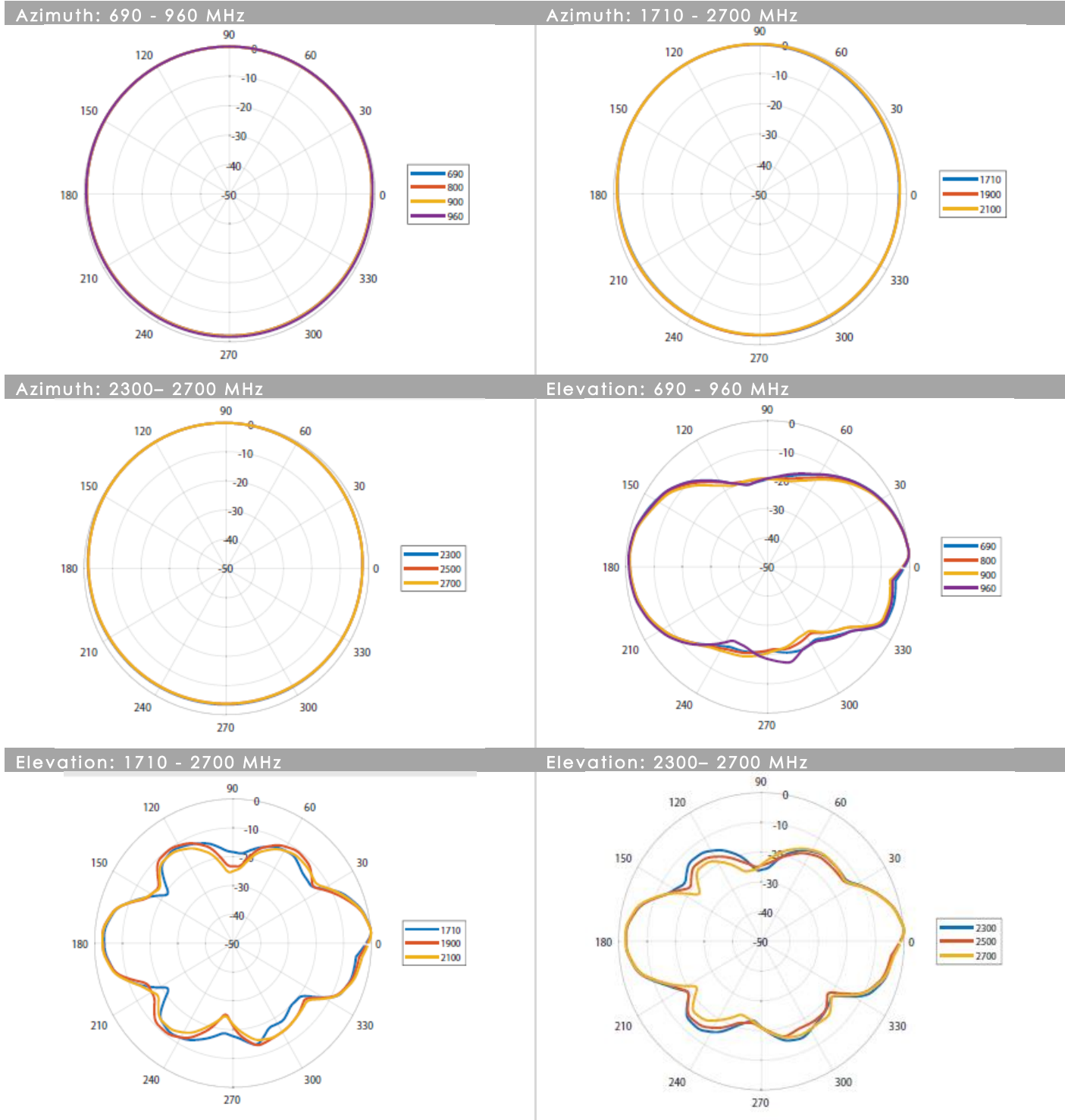
Gain @ 690 - 960 MHz:	6 dBi
Gain @ 1710 - 2700 MHz:	7 dBi
Gain @ 2300– 2700 MHz:	8 dBi

*\*Antenna gain measured with polarisation aligned standard antenna*

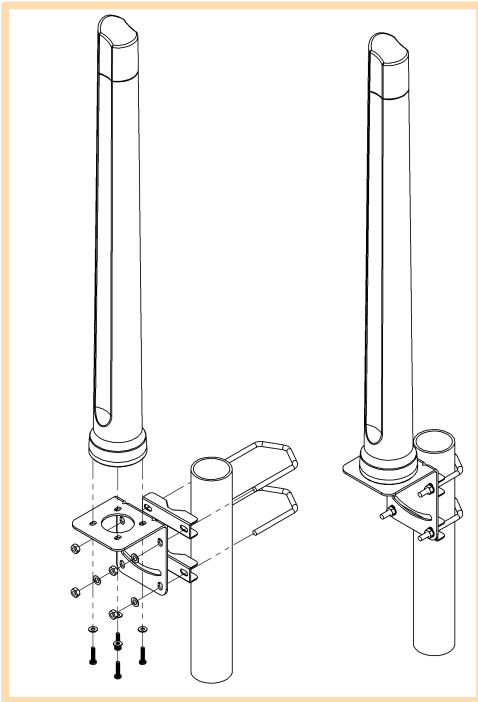
**Technical Drawings**



**Radiation Patterns**

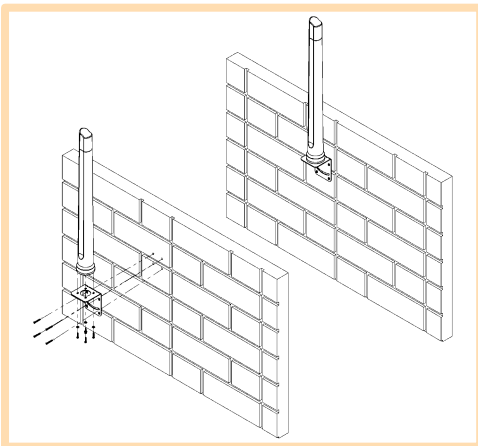


## Mounting Options



### Pole Mount

L-Bracket 316 Stainless Steel – included  
(for Ø 30-50mm pole)



### Wall Mount

L-Bracket 316 Stainless Steel – included

---

### Additional Accessories

Extension Cables: Up to 15m HDF 195  
Various connectors available  
Installation poles and brackets available

See accessories technical specifications on [www.poynting.tech](http://www.poynting.tech)

---

### Contact Poynting

#### **Poynting Antennas (Pty) Ltd - Head Office**

Unit 4, N1 Industrial Park  
Landmarks Avenue,  
Samrand, 0157  
South Africa

**Phone:** +27 (0) 12 657 0050

**E-mail:** [sales@poynting.co.za](mailto:sales@poynting.co.za)

#### **Poynting Europe**

Regus Business Center Neue Messe Riem  
Kronstadter Straße 4  
81677 München  
Germany

**Phone:** +49 89 208026538

**E-mail:** [sales-europe@poynting.tech](mailto:sales-europe@poynting.tech)