

Job Name:

System Reference:

Date:

Indoor Unit:
PLA-A30EA7

Outdoor Unit:
 PUY-A30NHA7
 PUY-A30NHA7-BS



INDOOR UNIT FEATURES

- Space-efficient ductless installation
- Equipped with 3D i-see Sensor[®] for enhanced comfort and energy efficiency
- Airflow settings for high and low ceiling applications
- Individual vane settings for direct/indirect airflow control or variable airflow patterns
- Knockouts for outside-air intake and branch-duct run
- Filter indicator signal
- Easy-to-clean, washable filter (optional high-efficiency filter available - requires multi-function casement)
- Built-in condensate lift mechanism
- Ideal for retail shops, classrooms, office spaces, conference centers, building lobbies, and more

OUTDOOR UNIT FEATURES

- Variable speed INVERTER-driven compressor
- Power receiver pre-charged with refrigerant volume for piping length up to 100 ft (70 ft. for A12/18/24/30)
- Low ambient cooling down to -40°F providing 100% capacity (only for PUY models with wind baffles installed)
- 24-hour continuous operation (cooling mode)
- High pressure protection
- Fast restarts in cooling mode (15 seconds for 12/18/36/42; 50 seconds for 24/30)
- Superior energy and operational efficiency

SPECIFICATIONS: PLA-A30EA7 & PUY-A30NHA7(-BS)

Cooling ¹	Maximum Capacity	BTU/H	30,000
	Rated Capacity	BTU/H	30,000
	Minimum Capacity	BTU/H	9,000
	Maximum Power Input	W	2,540
	Rated Power Input	W	2,540
	Moisture Removal	Pints/h	5.4
	Sensible Heat Factor		0.80
	Power Factor	%	95.2
Efficiency	SEER		22.8
	EER ¹		11.8
Electrical	Voltage, Phase, Frequency		208 / 230V, 1-phase, 60 Hz
	Guaranteed Voltage Range	V AC	198 – 253
	Voltage: Indoor - Outdoor, S1-S2	V AC	208 / 230
	Voltage: Indoor - Outdoor, S2-S3	V DC	24
	Short-circuit Current Rating (SCCR)	kA	12
	Recommended Fuse/Breaker Size (Outdoor)	A	25
	Recommended Wire Size (Indoor - Outdoor)	AWG	14
Indoor Unit	MCA	A	1.00
	Fan Motor Full Load Amperage	A	0.74
	Fan Motor Output	W	120
	Airflow Rate, Dry	CFM	570-670-780-880
	Airflow Rate, Wet	CFM	530-630-740-840
	External Static Pressure	in.WG	n/a
	Sound Pressure Level	dB(A)	28-32-35-38
	Drain Pipe Size	In. (mm)	1-1/4 (32)
	Condensate Lift Mechanism, Max. Distance	In.	33-7/16
	Heat Exchanger Type		Plate fin coil
	External Finish Color		White Munsell 6.4Y 8.9/0.4
	Unit Dimensions // Grille Dimensions	W: In. (mm)	33-1/16 (840) // 37-13/32 (950)
		D: In. (mm)	33-1/16 (840) // 37-13/32 (950)
		H: In. (mm)	11-3/4 (298) // 1-9/16 (40)
	Package Dimensions // Grille Dimensions	W: In. (mm)	35-9/16 // 39-6/16
D: In. (mm)		34-5/16 // 38-3/16	
H: In. (mm)		16-9/16 // 4-12/16	
Unit Weight // Grille Weight	Lbs. (kg)	56 (25) // 11 (5)	
Package Weight	Lbs. (kg)	77 (35)	
Indoor Unit Operating Temperature Range	Cooling Intake Air Temp (Maximum / Minimum)	°F	90 DB, 73 WB / 66 DB, 59 WB
Outdoor Unit	MCA	A	19
	MOCP	A	26
	Fan Motor Full Load Amperage	A	0.40

SPECIFICATIONS: PLA-A30EA7 & PUY-A30NHA7(-BS)

	Fan Motor Output	W	86
	Airflow Rate	CFM	1,940
	Refrigerant Control	Electronic Expansion Valve	
	Heat Exchanger Type	Cross fin	
	Sound Pressure Level, Cooling ¹	dB(A)	47
	Compressor Type	INVERTER-driven twin rotary	
	Compressor Model	SNB172FWHM1	
	Compressor Rated Load Amps	A	7
	Compressor Locked Rotor Amps	A	11
	Compressor Oil Type // Charge	oz.	FV50S // 23
	External Finish Color	Ivory Munsell 3Y 7.8/1.1	
	Base Pan Heater	n/a	
	Unit Dimensions	W: In. (mm)	37-13/32 (950)
		D: In. (mm)	13 + 1-3/16 (330 + 30)
		H: In. (mm)	37-1/8 (943)
	Package Dimensions	W: In. (mm)	40-15/16
		D: In. (mm)	17-11/16
H: In. (mm)		40-11/16	
Unit Weight	Lbs. (kg)	151 (68)	
Package Weight	Lbs. (kg)	176 (80)	
Outdoor Unit Operating Temperature Range	Cooling Intake Air Temp (Maximum / Minimum)	°F	115 DB / -40* DB
Refrigerant	Type	R410A	
	Charge	Lbs, oz	7 lbs, 11 oz
Piping	Gas Pipe Size O.D. (Flared)	In.(mm)	5/8 (15.88)
	Liquid Pipe Size O.D. (Flared)	In.(mm)	3/8 (9.52)
	Maximum Piping Length	Ft. (m)	225 (69)
	Maximum Height Difference	Ft. (m)	100 (30)
	Maximum Number of Bends	15	

Notes

AHRI Rated Conditions (Rated data is determined at a fixed compressor speed)	¹ Cooling (Indoor // Outdoor)	°F	80 DB, 67 WB // 95 DB, 75 WB
--	--	----	------------------------------

*Wind baffles required to operate below 23°F DB in cooling mode. For PUY models, wind baffles can be utilized to extend the cooling operation range to -40F. Please refer to the wind baffle submittals to determine which baffles are required to meet the desired operation range.

**System cuts out in heating mode to avoid thermistor error and automatically restarts at these temperatures.

SEACOAST PROTECTION

- External Outer Panel: Phosphate coating + Acrylic-Enamel coating
- Fan Motor Support: Epoxy resin coating (at edge face)
- Separator Assembly; Valve Bed: Epoxy resin coating (at edge face)
- "Blue Fin" treatment is an anti-corrosion treatment that is applied to the condenser coil to protect it against airborne contaminants.

ACCESSORIES: PLA-A30EA7

High-efficiency Filter Element	<input type="checkbox"/> PAC-SH59KF-E
Wireless Remote Receiver	<input type="checkbox"/> PAR-FA32MA-W
Wireless Remote Receiver	<input type="checkbox"/> PAR-FA32MA-E
Signal Receiver	<input type="checkbox"/> PAR-SR3LA-E
kumo touch™ RedLINK™ Wireless Controller	<input type="checkbox"/> MHK2
Deluxe MA Remote Controller	<input type="checkbox"/> PAR-40MAAU
Simple MA Controller	<input type="checkbox"/> PAC-YT53CRAU-J
Touch MA Controller	<input type="checkbox"/> PAR-CT01MAU-SB
Wired Remote Sensor	<input type="checkbox"/> PAC-SE41TS-E
Lockdown Bracket for Wireless, Hand-held, Remote Controller	<input type="checkbox"/> RCMKP1CB
Wireless Temperature and Humidity Sensor	<input type="checkbox"/> PAC-USWHS003-TH-1
Flush Mount Remote Temperature Sensor	<input type="checkbox"/> PAC-USSEN001-FM-1
Wireless Interface 2	<input type="checkbox"/> PAC-USWHS002-WF-2
Thermostat Interface	<input type="checkbox"/> PAC-US444CN-1
kumo station®	<input type="checkbox"/> PAC-WHS01HC-E
USNAP Interface	<input type="checkbox"/> PAC-WHS01UP-E
IT Extender	<input type="checkbox"/> PAC-WHS01IE-E
BACnet® and MODBUS® Interface	<input type="checkbox"/> PAC-UKPRC001-CN-1
External Fan / Heater Control Relay Adapter	<input type="checkbox"/> CN24RELAY-KIT-CM3
Connector for CN32 (remote on/off)	<input type="checkbox"/> PAC-SE55RA-E
Remote Operation Adapter (with wire terminals for remote ON/OFF and operation status/ error) ¹	<input type="checkbox"/> PAC-SF40RM-E
Grille (required)	<input type="checkbox"/> PLP-40EAEU
Multi-Function Casement	<input type="checkbox"/> PAC-SJ41TM-E
Installation/Trim Panels	<input type="checkbox"/> PLFY-ITP1
Space Panel	<input type="checkbox"/> PAC-SJ38AS-E
Air Outlet Shutter Plate	<input type="checkbox"/> PAC-SJ37SP-E
Blue Diamond Sensor Extension Cable—15 Ft.	<input type="checkbox"/> C13-103
MegaBlue Advanced Blue Diamond Condensate Pump w/ Reservoir & Sensor	<input type="checkbox"/> X87-835 - 110 to 250V
MaxiBlue Advanced Blue Diamond Mini Condensate Pump w/ Reservoir & Sensor (208/230V) up to 48,000 BTU/H [recommended]	<input type="checkbox"/> X87-721 - 208/230V
3 Pole Disconnect Switch (30A/600VUL) [fits 2"x4" utility] - Black	<input type="checkbox"/> TAZ-MS303
3 Pole Disconnect Switch (30A/600VUL) [fits 2"x4" utility] - White	<input type="checkbox"/> TAZ-MS303W

¹ Unable to use with wireless remote controller

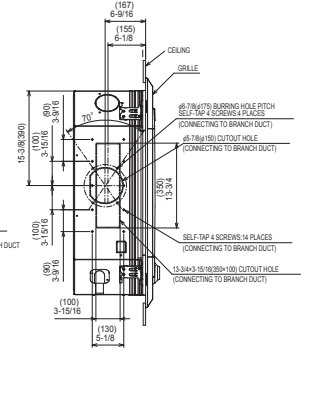
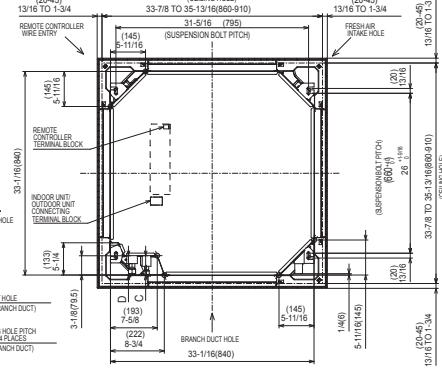
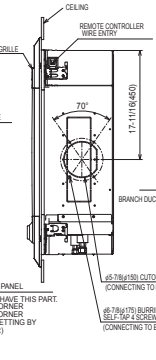
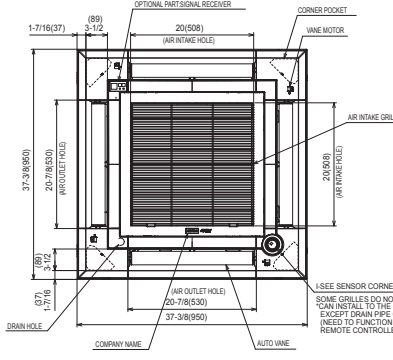
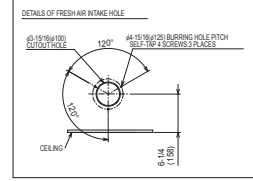
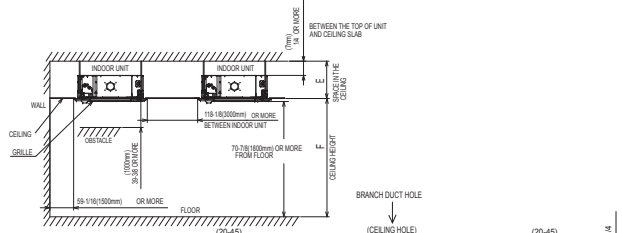
ACCESSORIES: PUY-A30NHA7(-BS)

Air Outlet Guide	<input type="checkbox"/> PAC-SG59SG-E
Front Wind Baffle	<input type="checkbox"/> WB-PA5
Side Advanced Wind Baffle	<input type="checkbox"/> WB-SD5
Rear Advanced Wind Baffle	<input type="checkbox"/> WB-RE5
Drain Socket	<input type="checkbox"/> PAC-SG61DS-E
Centralized Drain Pan	<input type="checkbox"/> PAC-SG64DP-E
M-NET Converter	<input type="checkbox"/> PAC-SJ85MA-E
M-NET Converter	<input type="checkbox"/> PAC-SJ95MA-E
Control/Service Tool	<input type="checkbox"/> PAC-SK52ST
Hail Guard	<input type="checkbox"/> HG-A6
Condensing Unit Mounting Pad 24" x 42" x 3"	<input type="checkbox"/> ULTRILITE2
Outdoor Unit Stand—12" High	<input type="checkbox"/> QSMS1201M
Outdoor Unit Stand—18" High	<input type="checkbox"/> QSMS1801M
Outdoor Unit Stand—24" High	<input type="checkbox"/> QSMS2401M
Heavy Duty Wall Mounting Bracket for Outdoor Units—Coated Steel	<input type="checkbox"/> QSWB2000M-1
Heavy Duty Wall Mounting Bracket for Outdoor Units—316 Series Stainless Steel	<input type="checkbox"/> QSWBSS
3/8" x 5/8" x 10' / 1/2" Lineset (Twin-Tube Insulation)	<input type="checkbox"/> MPLS385812T-10
3/8" x 5/8" x 15' / 1/2" Lineset (Twin-Tube Insulation)	<input type="checkbox"/> MPLS385812T-15
3/8" x 5/8" x 30' / 1/2" Lineset (Twin-Tube Insulation)	<input type="checkbox"/> MPLS385812T-30
3/8" x 5/8" x 50' / 1/2" Lineset (Twin-Tube Insulation)	<input type="checkbox"/> MPLS385812T-50
3/8" x 5/8" x 65' / 1/2" Lineset (Twin-Tube Insulation)	<input type="checkbox"/> MPLS385812T-65
3/8" x 5/8" x 100' / 1/2" Lineset (Twin-Tube Insulation)	<input type="checkbox"/> MPLS385812T-100

DIMENSIONS: PLA-A30EA7

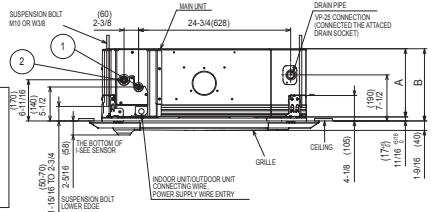
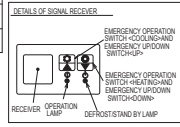
Unit: inch (mm)

- NOTE1 CHOOSE THE GRILLE AMONG THE DEDICATED GRILLES.
 2 REINFORCE THE SUSPENSION BOLT FOR EARTHQUAKE-RESISTANCE AS NEEDED.
 3 FOR THE SUSPENSION BOLT, USE M10 OR W3/8.
 (PROCURED AT THE LOCAL SITE.)
 4 FOR DRAIN PIPE, USE VP-250 (Ø 1-1/4" (32)) PVC TUBE.
 DRAIN PUMP INCLUSION.
 RANGE IS MAX. 33-7/8" (860mm) FROM THE CEILING.
 5 ELECTRICAL BOX MAY BE REMOVED FOR THE SERVICE PURPOSE.
 MAKE SURE TO STRUCK THE ELECTRICAL WIRE LITTLE BIT FOR CONTROL-POWER WIRES CONNECTION.
 6 THE HEIGHT OF THE INDOOR UNIT IS ABLE TO BE ADJUSTED WITH THE GRILLE ATTACHED.
 7 REQUIRES 3" (Ø) OR MORE SPACE BETWEEN TRANSIOM AND CEILING FOR THE INSTALLATION.
 8 WHEN INSTALLING THE BRANCH DUCTS, BE SURE TO INSULATE ABSOLUTELY OTHERWISE CONDENSATION AND DRIPPING MAY OCCUR.
 (IT BECOMES THE CAUSE OF DROPLET OR DRIPLET DRIPPING.)
 9 AS FOR NECESSARY INSTALLATION SERVICE SPACE, PLEASE REFER TO THE RIGHT AT FIGURE.
 10 FOR THE INSTALLATION OF THE OPTIONAL HIGH EFFICIENCY FILTER OR MULTI-FUNCTIONAL CASEMENT REFER TO SPECIAL DRAWING.



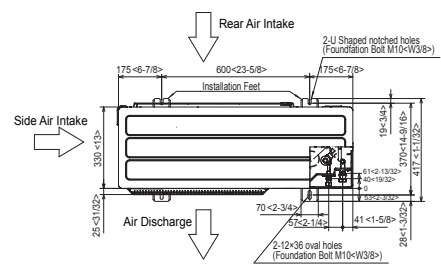
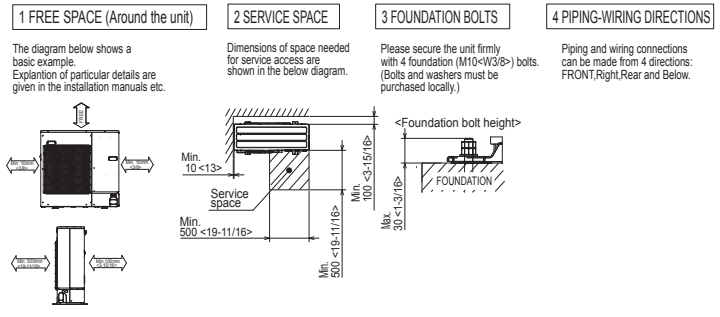
PLA-A30EA7-121824303942

MODELS	(1)	(2)	A	B	C	D	E	F
PLA-A1218EA7	REFRIGERANT PIPES 1/4\"	REFRIGERANT PIPES 1/2\"	5-1/2 (241)	10-3/16 (258)	3/16 (7.6)	3/16 (7.6)	13-7/16 (225) OR MORE	17-1/16 (280) OR LESS
PLA-A24-42EA7	REFRIGERANT PIPES 1/2\"	REFRIGERANT PIPES 3/8\"	11-1/16 (281)	13-3/4 (298)	3/8 (9.5)	3/8 (9.5)	13-3/16 (225) OR MORE	17-3/16 (280) OR LESS



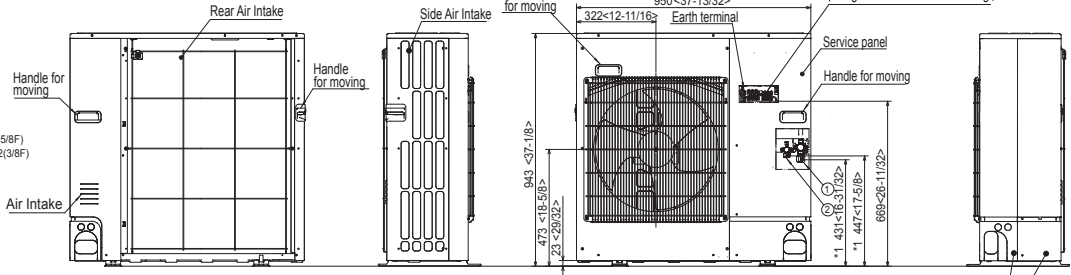
DIMENSIONS: PUY-A30NHA7(-BS)

Unit: mm<in>

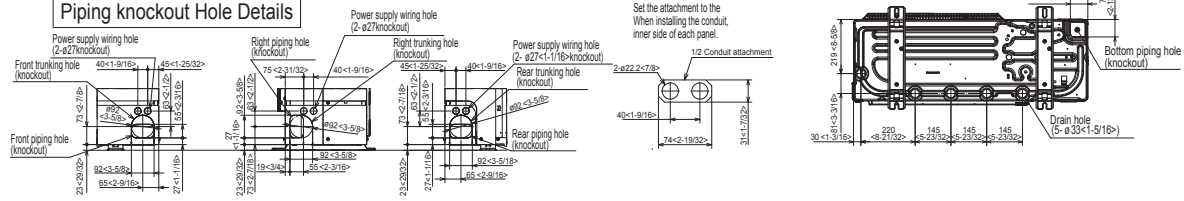


Example of Notes

- ① --- Refrigerant GAS pipe connection (FLARE) ø15.88(5/8F)
- ② --- Refrigerant LIQUID pipe connection (FLARE) ø9.52(3/8F)
- *1--- Indication of STOP VALVE connection location.



Piping knockout Hole Details



1340 Satellite Boulevard, Suwanee, GA 30024
Toll Free: 800-433-4822 www.mehvac.com



FORM# PLA-A30EA7 / PUY-A30NHA7(-BS) - 202003

Specifications are subject to change without notice.

© 2020 Mitsubishi Electric Trane HVAC US LLC. All rights reserved.