

The Golf Estate

Volkswagen Information Service. Telephone 0800 333 666
Internet: www.volkswagen.co.uk
© Volkswagen Group United Kingdom Limited 2012.
Issue: 1 October 2012. Printed in UK.
PVW525GOESB



facebook.com/VolkswagenUK



[@UKVolkswagen](https://twitter.com/@UKVolkswagen)



youtube.com/UKVolkswagen



Das Auto.

The Golf Estate





The Golf Estate. More stylish, more dynamic, more refined than ever before.

- 04 The Golf Estate
- 10 Exterior
- 12 The Golf Estate S and S BlueMotion Technology
- 14 The Golf Estate SE and SE BlueMotion Technology
- 16 The Golf Estate Sportline and Sportline BlueMotion Technology
- 18 BlueMotion Technologies
- 20 Engines and gearboxes
- 24 Safety
- 26 Storage
- 28 Optional equipment
- 32 Wheels
- 34 Paint
- 35 Upholstery
- 36 Combinations
- 38 Technical specification
- 40 Technology
- 42 Volkswagen service

**Breathtakingly,
stunningly,
unmistakably Golf.**





**Safer, quieter,
more intelligent
than ever before.**

**Work or play,
more than up to the challenge.**



Exterior

Stylish and refined, the Golf Estate exudes an elegance that is designed to stand the test of time. Sleek halogen headlights flow seamlessly into the high gloss black radiator grille, while the body-coloured bumper adds a sporty look. Dynamic and charismatic, the front design is unmistakably Golf.



The **chrome side window surrounds** form an elegant frame for the windows, giving greater definition to the roof and door lines. Standard on all SE and Sportline models.



The electrically heated and adjustable **body-coloured door mirrors with integrated indicators** not only complement the body styling, but are also highly visible to other road users.



Black roof rails are extremely practical and can be fitted with various carrier systems for transporting bulky items.



Chrome trimmed front fog lights add a striking look to the front of all Sportline models and include a static cornering function that illuminates the road when indicating or turning at low speed, as well as providing additional safety where there is poor visibility.



The **twin exhaust tailpipe** is a distinctive design feature, hinting at the power beneath the bonnet and the sporty performance to come.

1.4 litre TSI 122 PS and 2.0 litre TDI 140 PS engines only.



The **chrome trimmed radiator grille louvre inserts** are contemporary and stylish, contrasting with the high gloss black finish, and giving the front design its distinctive Golf look. Standard on all SE and Sportline models.

The Golf Estate S and S BlueMotion Technology

Exceptionally well equipped, the Golf Estate S and S BlueMotion Technology provide an impressive level of style and comfort. The entry level model offers an impressive level of specification, including body-coloured bumpers and door handles and 60:40 split folding rear seats, which fold flat into the boot floor, providing additional stowage space and enabling you to carry more bulky items. The driver's seat is height adjustable, meaning you can always find the optimum driving position, while electric windows front and rear, electrically heated and adjustable door mirrors, all enhance your driving comfort. The impressive RCD 310 DAB radio/MP3 compatible CD player ensures exceptional acoustics and features an AUX-in socket enabling you to play your iPod or MP3 player through the car's eight speakers. A multifunction computer on S BlueMotion Technology models includes a visual gear change recommendation for improved fuel consumption. There's even an extra storage compartment in the roof console to keep those essential items close at hand. The Golf Estate is also fitted with a comprehensive safety package, including ABS (Anti-lock Braking system), six airbags, ASR (Traction Control) and Isofix child seat preparation (for two rear child seats). Additionally there are driver's and front passenger's whiplash-optimised head restraints, helping to reduce whiplash in the event of a collision. For more information on BlueMotion Technologies, please see pages 18-19.



The RCD 310 DAB radio/MP3 compatible CD player features eight speakers, a DAB digital radio receiver for crystal clear digital audio broadcasts and an AUX-in socket for connection to an external multimedia source (e.g. iPod or MP3 player).

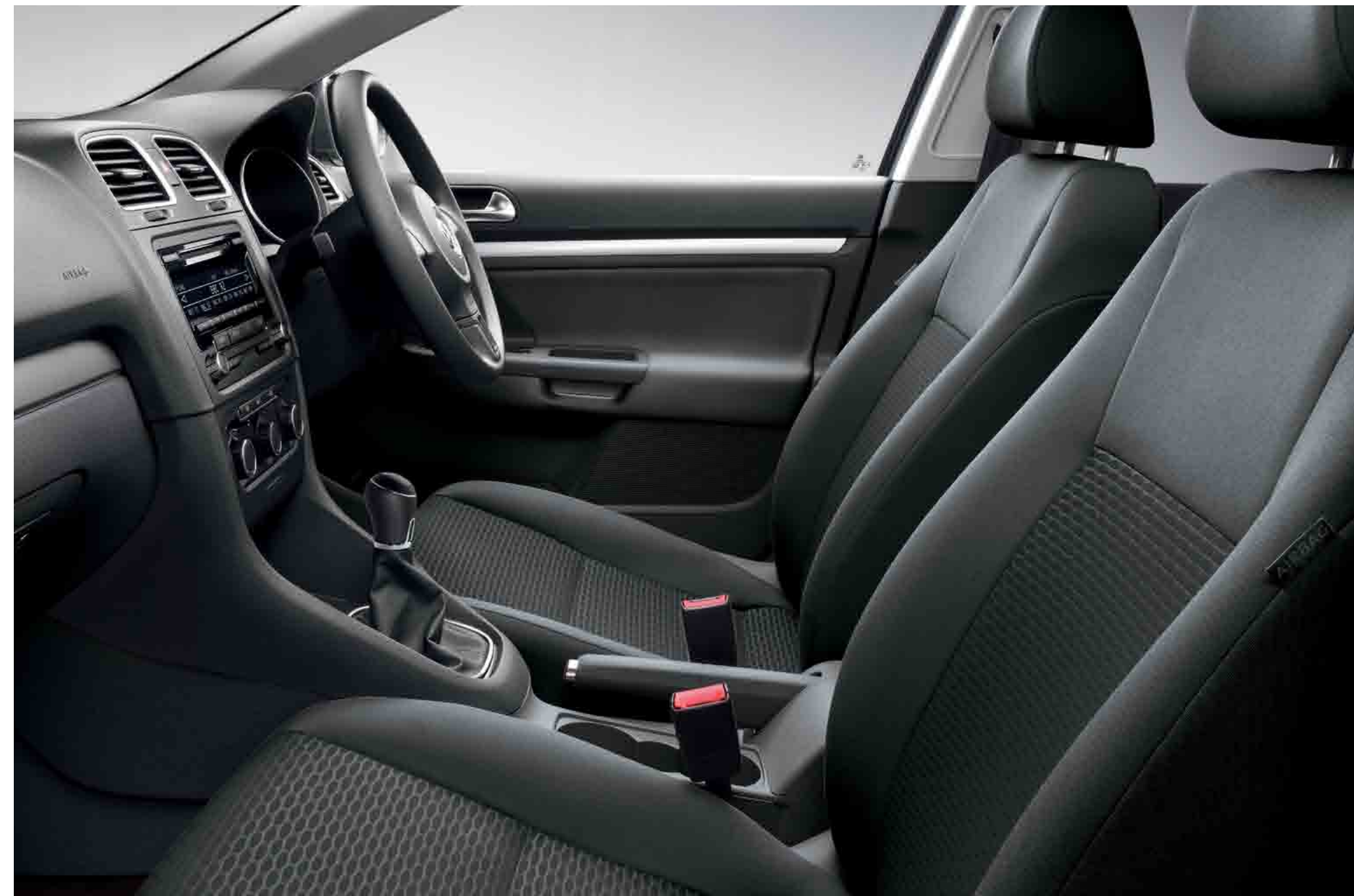


Specify the Golf Estate S with 'BlueMotion Technology' and you'll benefit from improved fuel consumption along with impressive CO₂ emission figures of just 109 g/km. For more information on BlueMotion Technologies, please see pages 18-19.



A Start/Stop function* automatically stops the engine when the vehicle is stationary, in neutral with the clutch released then cleverly restarts it when you depress the clutch to select first gear, saving fuel and reducing emissions.

* BlueMotion Technology models only.



Interior shown is Golf Estate S.



The Golf Estate SE and SE BlueMotion Technology

Maximum comfort and functionality, that's what you can expect from the Golf Estate SE. The front comfort seats feature height and lumbar adjustment to ensure the best position for your spine, while such items as cruise control, a dusk sensor and automatic coming/leaving home lighting function all enhance the driving experience. A front centre armrest with two cup holders, and driver's and front passenger's under seat drawers provide useful extra storage space, and other features include load-through provision, an alarm with interior protection and front footwell illumination. There's even a rain sensor with an automatic dimming interior rear-view mirror. The RCD 310 DAB radio/MP3 compatible CD player ensures exceptional acoustics and features an AUX-in socket enabling you to play your iPod or MP3 player through the car's eight speakers. Bluetooth telephone connection for HFP (Hands Free Profile) enabled telephones allows you to make and receive phone calls via the RCD 310 DAB radio system and provides safe, hands-free communications while driving. Elegant 'Merlin' upholstery with 'Pyramid Black' decorative inserts in the dash and centre console and a full set of high quality carpet mats complete the picture.

For those most mindful of the environment, the Golf Estate SE is also available with BlueMotion Technology, enabling you to enjoy all the comfort and convenience of the SE model, along with reduced CO₂ emissions and exceptional economy. For more information on BlueMotion Technologies, please see pages 18-19.

Phones must be Bluetooth HFP (Hands Free Profile) compatible, please contact your authorised Volkswagen retailer for specific phone compatibility.



When the rear centre armrest is folded down, it provides a useful **load-through facility**, enabling you to transport skis, snowboards and other long objects easily and conveniently.

Interior shown features optional 'Vienna' leather upholstery.



The **multifunction computer** shows such information as average speed, fuel consumption and driving time. BlueMotion Technology manual models also feature a visual gear change recommendation which helps in achieving improved fuel consumption.



Stylish **16 inch 'Atlanta' alloy wheels** with 205/55 R16 tyres and anti-theft wheel bolts provide a distinctive look to the exterior. SE BlueMotion Technology is fitted with 205/55 R16 low rolling resistance tyres as standard.



At speeds of over 19 mph, **cruise control** keeps your selected speed constant, enabling you to relax on longer journeys, without having to keep an eye on your speedometer.

The Golf Estate Sportline and Sportline BlueMotion Technology

Sporty and dynamic, the Golf Estate Sportline offers an extremely high level of specification, ensuring the ultimate in driving satisfaction and enjoyment. Eye-catching 17 inch 'Porto' alloys, a chrome trimmed front air intake surround and heat insulating rear tinted glass 65% light absorbing from the B pillar backwards, and, as you'd expect with such a sports performer, there's also lowered sports suspension on Sportline models. Add chrome trimmed front fog lights with static cornering function for additional illumination and safety, and it's obvious why the Sportline cannot fail to impress. Meanwhile, the Sportline BlueMotion Technology is fitted with 16 inch 'Atlanta' alloy wheels with low rolling resistance tyres and enables you to enjoy the style and luxury of the Sportline model, while benefiting from exceptional levels of economy and reduced CO₂ emissions. For more information on BlueMotion Technologies, please see pages 18-19.



Radio systems, multifunction computer and telephone connection for Bluetooth HFP (Hands Free Profile) enabled telephones can be operated easily and comfortably via the **leather trimmed multifunction steering wheel**.

Phones must be Bluetooth HFP (Hands Free Profile) compatible, please contact your authorised Volkswagen retailer for specific phone compatibility.



Front fog lights with static cornering function provide better illumination of the road ahead and when cornering, not only improving vision significantly, but also helping other road users to see you. The **chrome trimmed front air intake surround** beneath the sporty body-coloured bumper completes the Sportline's distinctive look.



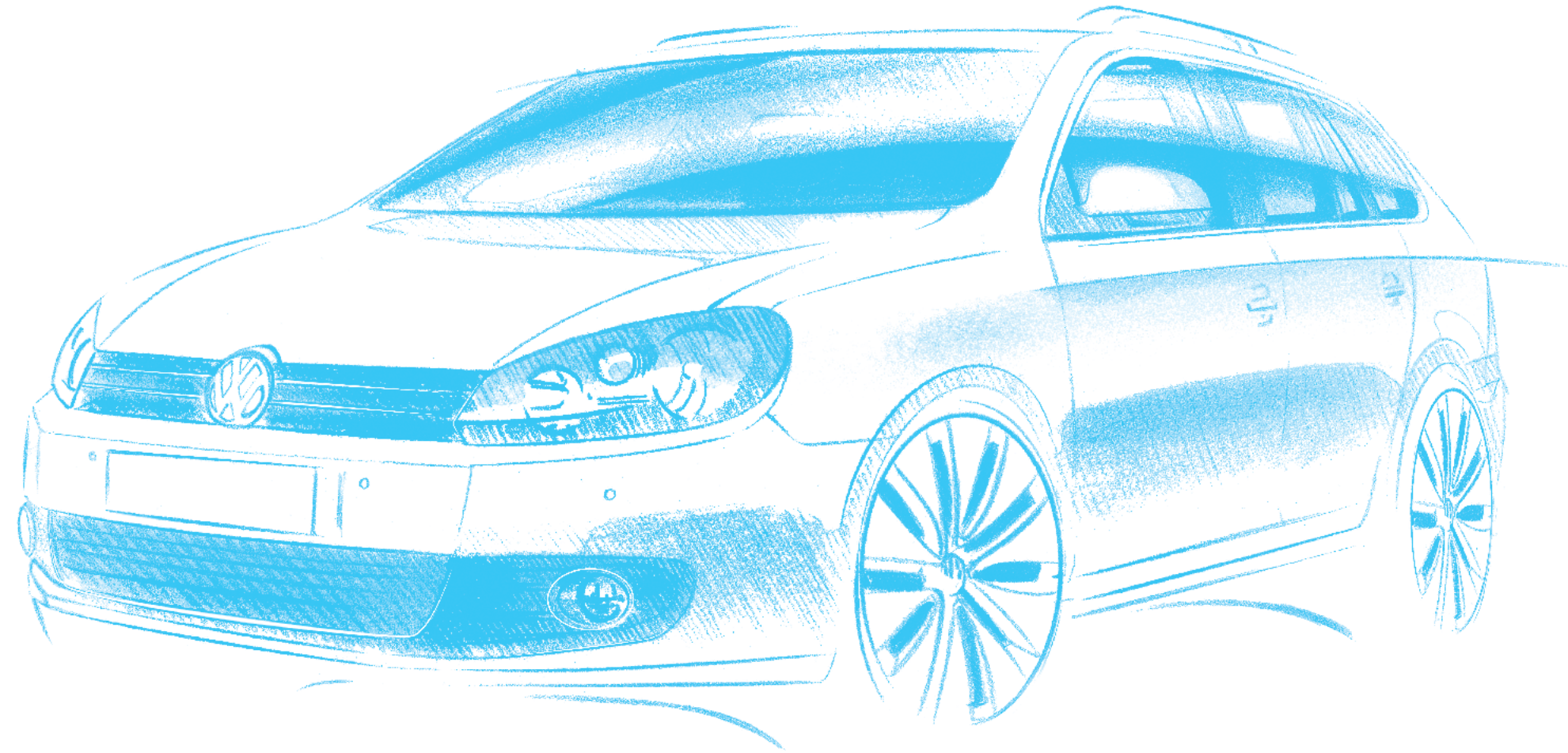
Sporty 17 inch '**Porto**' alloy wheels with 225/45 R17 tyres and anti-theft wheel bolts add a great look to your Sportline, while lowered sports suspension ensures safe and spectacular handling.



Interior shown is **Golf Estate Sportline**.

Think Blue.

To help reduce the impact on our environment, not only have we come up with a solution, we've designed many.



BlueMotion Technologies is our contribution to sustainable motoring. This means we offer optimum solutions for every demand, which makes driving more fuel efficient. Lower fuel consumption and lower emission diesel engines allied with BlueMotion Technologies are better for the environment and your wallet, without having to give up everyday practicality and comfort.

The BlueMotion Technology models build over the already well equipped S, SE and Sportline with low rolling resistance tyres, supplemented by innovative technology to help keep fuel consumption and emissions impressively low. The Start/Stop function momentarily switches off the engine when the vehicle is stationary, in neutral and the clutch disengaged. This is notified to the driver on the multifunction computer, then disappears when driving is resumed. The multifunction computer includes a visual gear change recommendation for improved fuel consumption, while recuperation, a regenerative braking system helps utilise energy during braking and deceleration, boosting the alternator voltage which in turn, recharges the battery.

Externally, Volkswagen's 'BlueMotion Technology' badging identifies the cleanest, most energy-efficient cars in our range. So when you see these logos you'll know we're talking about ways to cut emissions and the cost of your motoring. Environmental technologies of today are meeting the driving challenges of tomorrow with one very important aim: to reduce the impact of our cars on the environment for future generations.

* Please see pages 38-39 for CO₂ emissions and fuel consumption figures.



Elegant 16 inch 'Atlanta' alloy wheels with 205/55 R16 low rolling resistance tyres and anti-theft wheel bolts help to reduce fuel consumption. Standard on SE BlueMotion Technology and Sportline BlueMotion Technology models.



The multifunction computer provides useful statistics about your journey, such as exterior temperature, average and current fuel consumption, average speed and estimated distance to refuelling. It also includes a visual gear change recommendation for improved fuel consumption. Standard on all BlueMotion Technology models.



Powerful, athletic and built to perform.

Engines and gearboxes



The need to reduce carbon dioxide (CO₂) emissions and fuel consumption has grown stronger over the past decade, although the desire to have vehicles with increasingly better performance has remained as strong as ever. Volkswagen has strived to develop smaller engines that produce better fuel efficiency, while also maintaining the level of performance associated with larger engines. When an engine is downsized the power output is also reduced, which will affect the overall engine performance. However, when downsizing is combined with turbocharging and intelligent loading technology the performance issues can be overcome, with the **1.2 litre TSI 105 PS** being a perfect example of this technology and power.



The TDI diesel engines with common rail technology are quiet, refined and fitted with a **Diesel Particulate Filter (DPF)** which filters out exhaust elements that are harmful to the environment, significantly reducing diesel emissions as a result.

Select the DSG dual-clutch gearbox and you'll enjoy gear changes faster than a manual, yet so smooth they're virtually imperceptible, giving maximum driving enjoyment whatever the conditions. All Golf Estate models include a hill hold function – which automatically holds the vehicle for approximately two seconds when you come to a stop on a hill and then releases as you pull away. It's details such as these that make the difference. Establishing the Golf Estate once more as a car that raises the bar.



The dual-clutch **Direct Shift Gearbox (DSG)** represents a milestone in the development of the latest gearbox technology. This innovative automatic gearbox from Volkswagen shifts smoothly and imperceptibly into the pre-selected next gear. Such extremely short reaction times and direct response behaviour make dynamic acceleration twice as much fun. Depending on the engine specification, the six or seven speed gearbox is not only highly dynamic, but also fuel efficient.



The six speed **manual gearbox** transmits power with short, accurate shifts and very smooth handling, making it easy to drive at the right engine speed.



The electro-mechanical **power-assisted, speed-sensitive steering** adapts with the help of variable servo support to suit your driving speed. Power-assisted steering provides greater comfort and is more responsive.

Safety

As you'd expect from a car offering such high levels of specification, the Golf Estate is extensively well equipped with a whole range of safety features, such as the innovative and comprehensive airbag system ensuring driver and passengers are well protected in any eventuality, or the optional Park Assist system to help make parallel parking easier for the driver.



In an emergency, the driver and passengers can rely on a **comprehensive airbag system**, which comprises driver and front passenger airbags with front passenger airbag deactivation switch, front seat side impact airbags and a curtain airbag system for front and rear passengers. Deployment of the airbags is activated by crash sensors. When an impact is registered, the airbag control unit ignites the gas generator, which then inflates the airbags within 30 to 40 milliseconds, significantly lowering the risk of injury, especially in the neck.

Image shown is for illustration purposes only and may not necessarily reflect UK specification.

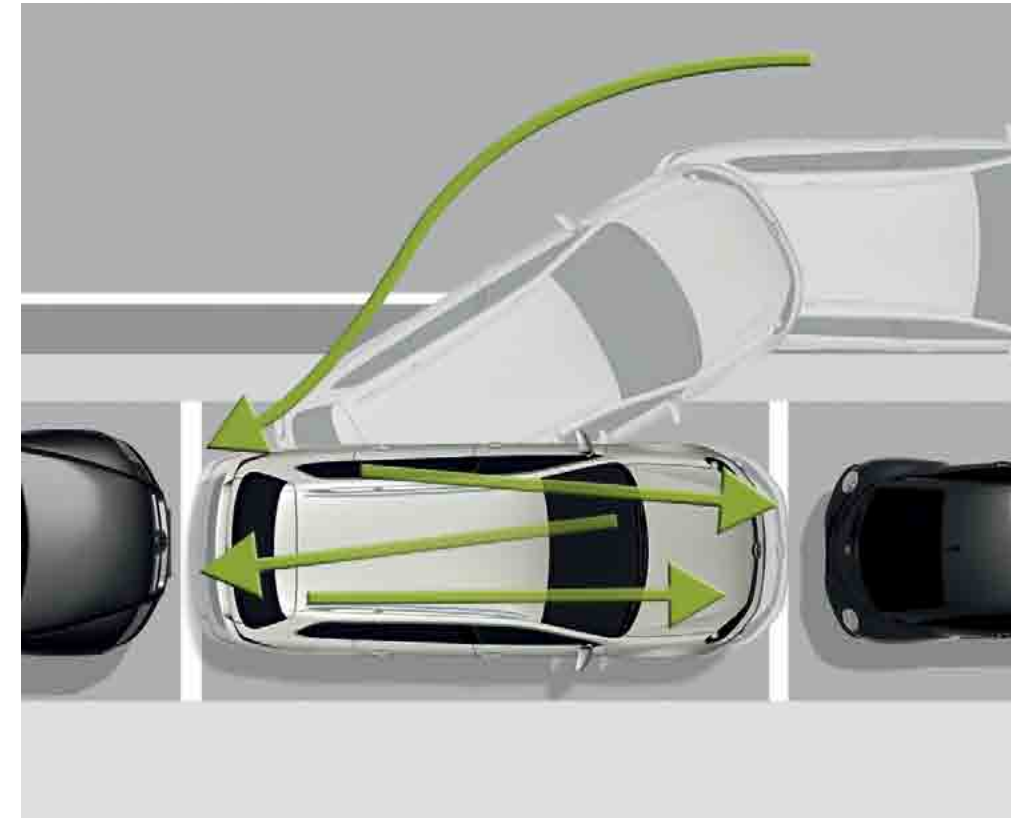


For greater safety you can add the optional **rear seat side airbag system** which helps protect rear seat passengers even further. Optional on all models.

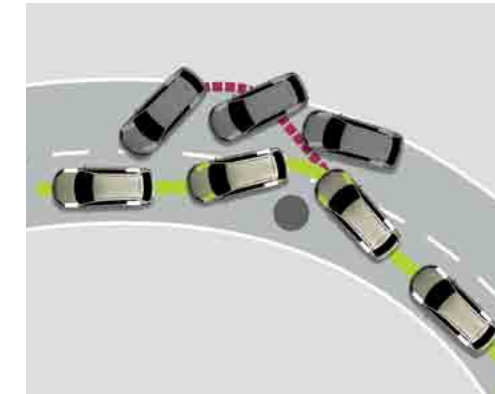


Whiplash-optimised front head restraints are height-adjustable, not only ensuring additional comfort, but also providing effective support for the head and spine in the event of a collision.

Interior shown features optional 'Vienna' leather upholstery.



The optional **Park Assist system**, with ultrasonic and audible front and rear parking sensors, steers the Golf Estate automatically into a parallel parking space only 1.1 metres longer than the vehicle. All you have to do is operate the accelerator, clutch and brake. Optional on all SE and Sportline models.



The **Electronic Stabilisation Programme (ESP)** recognises critical driving situations and reacts in milliseconds by targeting brake and engine management systems, controlling the speed of individual wheels and helping to bring the vehicle under control.



Front fog lights with static cornering function provide better illumination of the road ahead and when cornering, not only improving vision significantly, but also helping other road users to see you. Standard on all Sportline models and optional on all other models.



The front (ventilated) and rear disc brakes deliver excellent thermal performance, even if there is a sharp rise in temperature of the brakes.

Storage

The Golf Estate has room for just about everything. With a stowage capacity of up to 1,495 litres, it's ready for anything your day may have in store for you, from walking the dog to going on holiday. It features numerous practical details, such as a removable luggage cover and handy storage compartments in the front and rear doors as well as in the roof console. The 60:40 split folding rear seat that folds flat into the boot floor enables you to stow large loads or carry a combination of passengers and luggage. As you can tell, flexibility is top priority in the Golf Estate.



The useful **storage compartment** in the roof is easily accessible by both driver and front passenger, and provides additional storage space for all the items you need to keep close at hand.



Keep your luggage safely in place with the **retractable net partition**. This option has a two position usage and can be used with the seats upright or when folded flat. Optional on all models.

Interior shown features optional 'Vienna' leather upholstery.



As with any estate, flexibility and versatility are paramount, and here the Golf Estate excels, with a number of different features providing a wealth of practical solutions. Take, for example, the **60:40 split folding rear seats** that fold flat into the boot floor which enables you to stow large loads or carry a combination of passengers and luggage, or the four load securing points in the luggage compartment to secure luggage or loads firmly in place. The luggage cover will hide items from prying eyes and with it removed and the rear seats folded down, there is a massive 1,495 litres of space, enough to accommodate large items with ease.

Interior shown features optional 'Vienna' leather upholstery.



Drawers beneath the front seats provide a handy storage solution for all those bits and pieces you need during your journey. Standard on all SE and Sportline models.

Optional equipment

The Golf Estate has been equipped with the highest level of specification yet, ensuring your total comfort and convenience. Ergonomic design combines with aesthetic detail to provide an interior offering total driving pleasure, where everything is clearly displayed and close to hand, and nothing is too much effort. However, as everyone has their own individual needs and requirements, a whole range of optional extras are also available, enabling you to create an interior providing even greater levels of practicality and luxury.



The RCD 510 touch-screen DAB radio/dash-mounted MP3 compatible six CD autochanger features a large 6½ inch colour display, with intuitive menu navigation and touch-screen operation. It also features an AUX-in socket for connection to an external multimedia source (e.g. iPod or MP3 player) and an SD memory card slot. Optional on all SE and Sportline models.

RCD 510 DAB radio system, RNS 315 navigation/DAB radio system or RNS 510 DVD navigation/DAB radio system cannot be specified in conjunction with each other.



The RNS 315 touch-screen navigation/DAB radio system with MP3 compatible CD player features a 5 inch colour display with clearly arranged map navigation, as well as an SD card reader and practical AUX-in socket for connecting external audio devices, such as an iPod or MP3 player. Optional on all SE and Sportline models.

RCD 510 DAB radio system, RNS 315 navigation/DAB radio system or RNS DVD 510 navigation/DAB radio system cannot be specified in conjunction with each other.



The RNS 510 touch-screen DVD navigation/DAB radio system with integrated voice control will guide you to your destination using preloaded navigation data from the 30 GB hard drive and includes a 6½ inch colour display. This ingenious system responds to spoken voice commands which control the navigation, CD and radio functions. It is possible to give spoken navigation instructions such as the county, city, postcode, road names and house number. It also plays DVDs and music from the DVD drive, 30 GB hard drive or via an SD card. Optional on all SE and Sportline models.

RCD 510 DAB radio system, RNS 315 navigation/DAB radio system or RNS 510 DVD navigation/DAB radio system cannot be specified in conjunction with each other. Note, the DVD playback will not function whilst the navigation system is in use, or the vehicle is in motion.



Front and rear parking sensors help with parking by emitting both audible and visual signals: the closer you are to an obstacle the faster the sound frequency. In addition, the Optical Parking Display shows your position on your audio system's display. Optional on all models.



The Multi Device Interface (MDI) with iPod and USB cables enables you to connect a compatible device, while track selection is viewed via the vehicle's radio system. A front centre armrest is included when this option is specified on all S models. Optional on all models.

Not in conjunction with front centre armrest on S and S BlueMotion Technology models.



The rear-view camera provides a clear view to the rear of your vehicle, transmitting an undistorted live image to your radio display and enabling you to park easily and safely. This also helps when towing a trailer. Optional on all SE and Sportline models.

Rear-view camera will be fitted in lieu of DAB digital radio receiver on RCD 510 DAB radio system. Must be ordered in conjunction with RCD 510 DAB radio system, RNS 315 navigation/DAB radio system or RNS 510 DVD navigation/DAB radio system.



The leather-trimmed multifunction steering wheel's ergonomically designed switches enable you to operate the radio, multifunction computer and Bluetooth telephone connection, without taking your hands off the wheel. Optional on all SE models and standard on all Sportline models.

Phones must be Bluetooth HFP (Hands Free Profile) compatible, please contact your authorised Volkswagen retailer for specific phone compatibility.



The front centre armrest provides additional comfort for the driver, while the rear seat passengers also benefit from two rear air vents and two cup holders. Optional on all S models and standard on all SE and Sportline models.

Not in conjunction with Multi Device Interface (MDI) on S and S BlueMotion Technology models.



2Zone electronic climate control air conditioning features dual zone control for the driver and front passenger, allowing each to select their individually preferred temperature. A sensor monitors the exterior air quality and, if necessary, automatically activates the air recirculation function. Optional on all SE and Sportline models.

Interior shown features optional RCD 510 DAB touch-screen radio system.



Headlight washers form part of the **Winter pack**, along with heated front seats, a low washer fluid warning light and automatically heated windscreen washer jets. Optional on all models.



Heat insulating rear tinted glass from the B pillar backwards is 65% light absorbing, helping reduce exposure to the sun's rays, whilst creating a sporty look. Optional on all SE models and standard on all Sportline models.

Model shown features optional silver anodised roof rails.



Chrome trimmed front fog lights with static cornering function provide better illumination of the road ahead and when cornering, improve vision significantly. Optional on all S and SE models and standard on all Sportline models.



At 1.1 square metres, the optional **panoramic sunroof** provides an extra dimension of space and light. If it gets too hot or too cold, simply close the sunroof at the touch of a button using the control panel in the roof console above. As well as tinted glass, there's also an electric sunblind that can be closed while the roof is still open, enabling you to enjoy the sunshine without fear of sunburn. Optional on S, SE and Sportline models. **Silver anodised roof rails** are a handy and practical addition to the exterior of the Golf Estate, and add a real touch of style. Optional on all SE and Sportline models.

Panoramic sunroof is not available on BlueMotion Technology models.



Exclusive **'Vienna' leather upholstery** provides the ultimate in comfort and luxury, enhancing the Golf Estate's interior ambience. Available in Corn Silk Beige or Titan Black. Optional on all SE and Sportline models.

Some parts of leather interior will contain artificial leather.



The **Luxury pack** for all S models comprises electrically foldable door mirrors with reverse activated kerb-view adjustment on passenger's door mirror, front footwell illumination and an automatic coming/leaving home lighting function which ensures your surroundings are well lit for additional security. The dusk sensor activates the vehicle's headlights when natural light levels diminish (i.e. night driving and underground car parks), while the automatically dimming interior rear-view mirror and rain sensor provide extra safety and comfort. Optional on all S models.



The **Luxury pack** for all SE and Sportline models features electrically foldable door mirrors. With reverse activated kerb-view adjustment on the passenger's door mirror, it makes reversing just that little bit easier. Optional on all SE and Sportline models.

Wheels

The Golf Estate offers a selection of wheels, enabling you to choose the style that best suits your individual taste. Whether you prefer sporty and dynamic or classic and elegant, this gives you plenty of opportunity to add a touch of style and personality, and transform the appearance of your Golf Estate.



Elegant 16 inch steel wheels with 205/55 R16 tyres are light, hardwearing and visually very similar to an alloy wheel. Standard on S models. S BlueMotion Technology models are fitted with 205/55 R16 low rolling resistance tyres as standard.



Stylish 16 inch 'Atlanta' alloy wheels with 205/55 R16 tyres and anti-theft wheel bolts provide a distinctive look to the exterior. Standard on all SE and Sportline BlueMotion Technology models. SE BlueMotion Technology and Sportline BlueMotion Technology models are fitted with 205/55 R16 low rolling resistance tyres as standard.

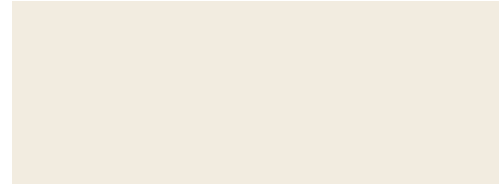


Sporty 17 inch 'Porto' alloy wheels with 225/45 R17 tyres and anti-theft wheel bolts add a great look, while lowered sports suspension ensures safe and assured handling. Standard on Sportline and optional on SE models. Sportline BlueMotion Technology models feature 16 inch 'Atlanta' alloy wheels with 205/55 R16 low rolling resistance tyres as standard.

Paint



Black
Non-Metallic · A1



Candy White*
Non-Metallic · B4



Tornado Red
Non-Metallic · G2



Moon Rock Silver*
Metallic · 0B



Frost Silver*
Metallic · 0V



Platinum Grey*
Metallic · 2R



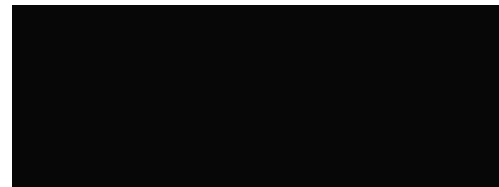
Java*
Metallic · 4Q



Reflex Silver*
Metallic · 8E



Tempest Blue*
Metallic · C1



Deep Black*
Pearl Effect · 2T

* Candy White non-metallic, metallic and pearl effect paints are optional at extra cost. Please note: the print processes do not allow exact reproduction of the paint colours.

Upholstery



'Spell' cloth
Titan Black BB

Standard on S, S BlueMotion Technology



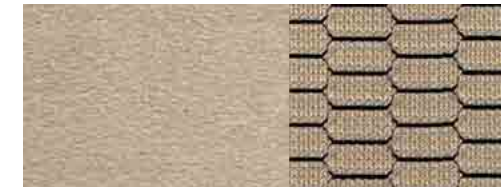
'Merlin' cloth
Titan Black FW

Standard on SE, SE BlueMotion Technology

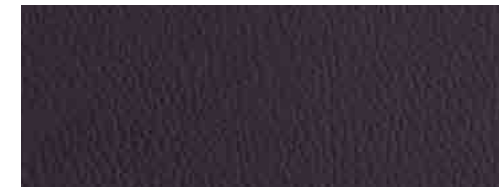


Alcantara
Titan Black XT

Standard on Sportline, Sportline BlueMotion Technology



Alcantara
Corn Silk Beige XU



'Vienna' leather*†
Titan Black TW

Optional on SE, SE BlueMotion Technology, Sportline, Sportline BlueMotion Technology



'Vienna' leather*†
Corn Silk Beige YY

* Optional at extra cost. Please note: the print processes do not allow exact reproduction of the upholstery colours.

† Some parts of leather interior will contain artificial leather.

Combinations

Seat upholstery	Carpet	Dashboard	Black A1	Candy White B4*	Tornado Red G2	Moon Rock Silver Metallic* 0B	Frost Silver Metallic* 0V	Platinum Grey Metallic* 2R	Java Metallic* 4Q	Reflex Silver Metallic* 8E	Tempest Blue Metallic* C1	Deep Black Pearl Effect* 2T
'Spell' cloth Standard on S, S BlueMotion Technology												
Titan Black (BB)	Black	Black/Black	●	●	●	●	●	●	●	●	●	●
'Merlin' cloth Standard on SE, SE BlueMotion Technology												
Titan Black (FW)	Black	Black/Black	●	●	●	●	●	●	●	●	●	●
Alcantara Standard on Sportline, Sportline BlueMotion Technology												
Titan Black (XT)	Black	Black/Black	●	●	●	●	●	●	●	●	●	●
Corn Silk Beige (XU)	Black	Black/Corn Silk Beige	●	●	●	-	-	●	●	-	●	●
'Vienna' leather** Optional on SE, SE BlueMotion Technology, Sportline, Sportline BlueMotion Technology												
Titan Black (TW)	Black	Black/Black	○	○	○	○	○	○	○	○	○	○
Corn Silk Beige (YY)	Black	Black/Corn Silk Beige	○	○	○	-	-	○	○	-	○	○

* Candy White non-metallic, metallic and pearl effect paints and 'Vienna' leather upholstery are optional at extra cost.
 † Some parts of leather interior will contain artificial leather.
 ● Standard. ○ Optional at extra cost. - Not available.



Optional 'Vienna' leather sports seats add a luxurious, sporty look to the interior.

Some parts of leather interior will contain artificial leather.

Technical specification

	S	SE	S	S, SE†	S BlueMotion Tech, SE BlueMotion Tech†, Sportline BlueMotion Tech	SE, Sportline
	1.2 litre TSI 105 PS	1.4 litre TSI 122 PS	1.6 litre TDI 90 PS	1.6 litre TDI 105 PS	1.6 litre TDI 105 PS	2.0 litre TDI 140 PS
Engine						
Engine type	Four cylinder petrol	Four cylinder petrol	Four cylinder diesel	Four cylinder diesel	Four cylinder diesel	Four cylinder diesel
Cubic capacity, ltrs/cc	1.2/1197	1.4/1390	1.6/1598	1.6/1598	1.6/1598	2.0/1968
Max. output, PS ⁽⁰¹⁾ /kW	105/77	122/90	90/66	105/77	105/77	140/103
at rpm	5000	5000	4200	4400	4400	4200
Max. torque, lbs.ft/Nm	129/175	148/200	170/230	185/250	185/250	236/320
at rpm	1550-4100	1500-4000	1500	1500-2500	1500-2500	1750-2500
Gearbox	Six speed manual	Six speed manual	Five speed manual	Five speed manual	Five speed manual	Six speed manual
	Seven speed auto DSG	Seven speed auto DSG	–	Seven speed auto DSG†	Seven speed auto DSG†	Six speed auto DSG

Weights, kgs						
Manual gearbox:						
Unladen weight ⁽⁰²⁾	1368	1394	1445	1445	1452	1495
Gross vehicle weight	1910	1940	1980	1980	1960	2030
Payload ⁽⁰²⁾	617	621	610	610	583	610
Axle load limit: Front	960	990	1030	1030	1010	1080
Rear	1000	1000	1000	1000	1000	1000
Automatic DSG gearbox:						
Unladen weight ⁽⁰²⁾	1409	1426	–	1466	1473	1521
Gross vehicle weight	1950	1970	–	2000	1980	2050
Payload ⁽⁰²⁾	616	619	–	609	582	604
Axle load limit: Front	1000	1020	–	1050	1030	1100
Rear	1000	1000	–	1000	1000	1000

Trailer load limits, kgs ⁽⁰³⁾						
Braked 12% incline	1200	1300	1400	1400	1400	1500
Unbraked:						
Manual gearbox	680	690	720	720	720	740
Automatic DSG gearbox	700	710	–	730	730	750
Towbar load limit	75	75	75	75	75	75
Max. roof load	75	75	75	75	75	75

† Seven speed auto DSG only available on this model.

	S	SE	S	S, SE†	S BlueMotion Tech, SE BlueMotion Tech†, Sportline BlueMotion Tech	SE, Sportline
	1.2 litre TSI 105 PS	1.4 litre TSI 122 PS	1.6 litre TDI 90 PS	1.6 litre TDI 105 PS	1.6 litre TDI 105 PS	2.0 litre TDI 140 PS
Performance						
Top speed, mph (km/h), where the law permits						
Manual gearbox	118 (190)	125 (201)	111 (179)	118 (190)	118 (190)	130 (210)
Automatic DSG gearbox	118 (190)	125 (201)	–	118 (190)	118 (190)	129 (208)
Acceleration, secs 0 - 62 mph						
Manual gearbox	11.3	9.9	13.8	11.9	11.9	9.7
Automatic DSG gearbox	11.3	9.9	–	11.9	11.9	9.7
ABI insurance group, 1 - 50	13E	17E	13E	15E	18E	21E

Environmental information						
Fuel grade, minimum	Unleaded, 95 RON	Unleaded, 95 RON	Diesel ⁽⁰⁴⁾	Diesel ⁽⁰⁴⁾	Diesel ⁽⁰⁴⁾	Diesel ⁽⁰⁴⁾
Fuel tank capacity, galls/ltrs ⁽⁰⁵⁾	12.1/55	12.1/55	12.1/55	12.1/55	12.1/55	12.1/55
Official fuel consumption						
manual gearbox,						
mpg/ltr per 100 km ⁽⁰⁶⁾						
Urban	39.2/7.2	34.0/8.3	50.4/5.6	49.6/5.7	54.3/5.2	44.8/6.3
Extra-urban	56.5/5.0	53.3/5.3	72.4/3.9	72.4/3.9	78.5/3.6	68.9/4.1
Combined	48.7/5.8	44.8/6.3	62.8/4.5	62.8/4.5	67.3/4.2	57.6/4.9
Official fuel consumption,						
automatic DSG gearbox,						
mpg/ltr per 100 km ⁽⁰⁶⁾						
Urban	40.4/7.0	36.7/7.7	–	49.6/5.7	57.6/4.9	40.9/6.9
Extra-urban	54.3/5.2	55.4/5.1	–	67.3/4.2	70.6/4.0	62.8/4.5
Combined	47.9/5.9	47.1/6.0	–	58.9/4.8	65.7/4.3	52.3/5.4
Official CO₂ emission, g/km						
Manual gearbox ⁽⁰⁷⁾	136	146	119	119	109	128
Automatic DSG gearbox ⁽⁰⁷⁾	136	139	–	125	113	139
Emission class	EURO 5	EURO 5	EURO 5	EURO 5	EURO 5	EURO 5
Noise, dB						
Manual gearbox	70.0	73.0	71.0	69.0	71.0	73.0
Automatic DSG gearbox	70.0	70.0	–	69.0	69.0	69.0

Technology

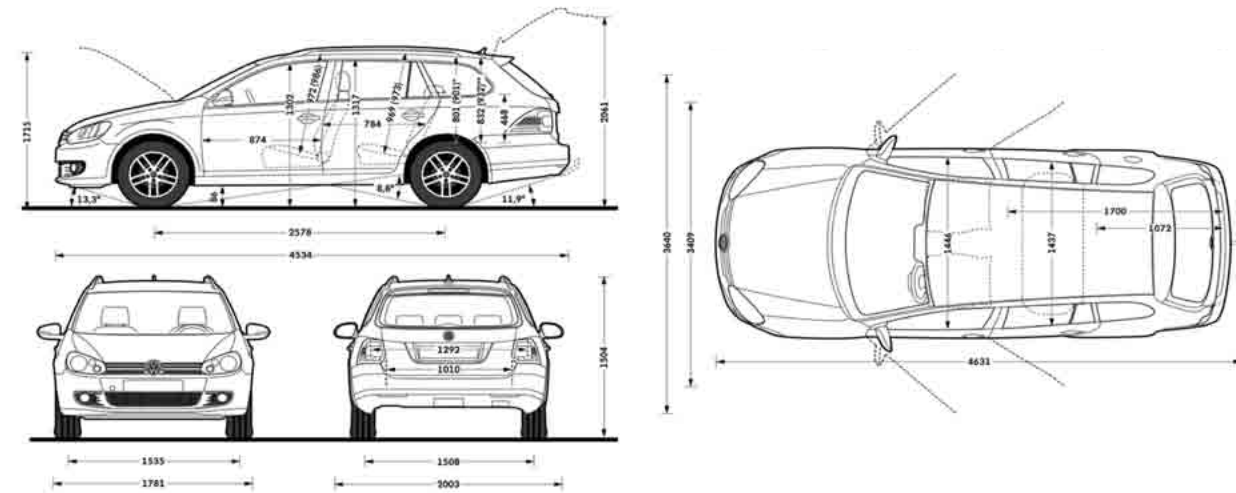
Exterior dimensions	
Length, mm	4534
Width – excluding door mirrors, mm	1781
Width – opened front/rear doors, mm	3640/3409
Height, mm	1504
Height – opened bonnet/floor, mm	1715
Height – opened tailgate/floor, mm	2061
Wheelbase, mm	2578
Turning circle, m	10.9

Interior dimensions	
Effective headroom – front, mm (with sunroof)	972 (986)
Effective headroom – rear, mm (with sunroof)	969 (973)
Elbow width, front, mm	1446
Elbow width, rear, mm	1437

Maximum luggage capacity, litres	
VDA measuring method using 200 x 100 x 50 mm blocks	
With rear seat upright	505
With rear seat folded	1495

Technical specification notes

- The maximum power output figures are quoted in PS (or Pferdestärke, which is the metric equivalent of horsepower). To convert from metric to imperial horsepower, divide the PS figure by 1.0139.
- Figures are calculated in accordance with manufacturer's criteria. The individual unladen weight depends on the specification of the vehicle, this then reduces the possible payload accordingly. The unladen weight and payload both include the fuel tank 90% full, driver (68 kg) and luggage (7 kg) in line with EU directive 95/48.
- With increasing altitude the engine performance diminishes. From 1,000 m above sea level and for every 1,000 m thereafter 10% of the vehicle/trailer weight (trailer weight + gross vehicle weight) must be deducted.
- The use of 100% RME and FAME (bio diesel) is not possible. Forecourt diesel with up to 7% bio diesel content, adhering to standard BS EN 590, can be used in diesel engines. The use of ethanol in forecourt petrol meeting BS EN 228 is allowable.
- The size of the fuel tank is approximate and therefore it may be possible to add a greater amount of fuel than the size of the tank specified, due to the space in the filler neck.
- Official fuel consumption according to EU Directive 99/94. The consumption calculation according to 1999/100/EC is based on the actual unladen weight of the vehicle. Additional specifications can lead to a higher weight class and hence to consumption figures of this higher weight class. The driving style, road and traffic conditions, environmental influences and vehicle condition can in practice lead to consumption figures, which may differ from those calculated with this standard.
- The weight of a vehicle will influence the level of CO₂ emission it produces; as a result, vehicles with higher levels of specification and factory-fitted options may emit higher levels of CO₂.



On illustrations, where arrows and figures are shown inside of the vehicle, the measurements are for interior dimensions. Where arrows and figures are shown outside of the vehicle, the measurements are for exterior dimensions.

Engines

- Front transverse-installed engine
- 1.2 litre/105 PS⁽⁰¹⁾ (77 kW) petrol engine: EU5 emissions standard, four cylinder in-line direct injection engine, with two valves per cylinder. Fitted with a turbocharger module with electric boost pressure regulation. Available with a six speed manual or a seven speed automatic DSG transmission
- 1.4 litre/122 PS⁽⁰¹⁾ (90 kW) petrol engine: EU5 emissions standard, four cylinder in-line direct injection turbocharged engine, with four valves per cylinder. Fitted with a turbocharger. Available with a six speed manual or a seven speed automatic DSG transmission
- 1.6 litre/90 PS⁽⁰¹⁾ (66 kW) common rail diesel engine: EU5 emissions standard, four cylinder in-line common rail diesel engine, with four valves per cylinder. Fitted with a turbocharger and a DPF (diesel particulate filter). Available with a five speed manual transmission
- 1.6 litre/105 PS⁽⁰¹⁾ (77 kW) common rail diesel engine: EU5 emissions standard, four cylinder in-line common rail diesel engine, with four valves per cylinder. Fitted with a turbocharger and a DPF (diesel particulate filter). Available with a five speed manual or a seven speed automatic DSG transmission
- 2.0 litre/140 PS⁽⁰¹⁾ (103 kW) common rail diesel engine: EU5 emissions standard, four cylinder in-line common rail diesel engine, with four valves per cylinder. Fitted with a turbocharger and a DPF (diesel particulate filter). Available with a six speed manual or a six speed automatic DSG transmission

Transmission

- Front wheel drive through asbestos-free single-plate dry clutch. Hydraulic clutch-mechanism. Five or six speed manual gearbox. Six or seven speed automatic DSG gearbox with double joint half axles (wet clutch on DSG models)
- Five speed manual: 1.6 litre TDI 90 PS, 1.6 litre TDI 105 PS
- Six speed manual: 1.2 litre TSI 105 PS, 1.4 litre TSI 122 PS, 2.0 litre TDI 140 PS
- Six speed automatic DSG: 2.0 litre TDI 140 PS
- Seven speed automatic DSG: 1.2 litre TSI 105 PS, 1.4 litre TSI 122 PS, 1.6 litre TDI 105 PS

Running gear

- Electronic Stabilisation Programme (ESP) including Electronic Differential Lock (EDL), Traction Control (ASR) and Countersteer Support
- Front suspension through coil springs with telescopic shock absorbers, all elements integrated in chassis legs
- Rear suspension with gas pressure shock absorbers and separate springs
- Wheel control: front through chassis legs and (lower) triangular wishbones (directionally stabilising steering roll radius)
- Wheel control: rear through four-link suspension with independent wheel suspension
- Front and rear anti-roll bar

Steering

- Electro-mechanical steering rack
- Collapsible, height and lengthways adjustable safety steering column

Brakes

- Electronically controlled Anti-lock Braking System (ABS) with Electronic Brake-pressure Distribution (EBD)
- Diagonal twin-circuit brake system with front and rear disc brakes (front ventilated)
- Asbestos-free brake pads
- Hydraulic Brake Assist (HBA)

Volkswagen service

The Volkswagen Warranty

Three-year Warranty

All Volkswagen passenger cars come with a three-year/60,000 miles warranty, which protects your car against the failure of most technical and electrical components due to manufacturing defects.

This comprises a two-year manufacturer’s warranty with unlimited mileage plus a further one-year/60,000 miles (whichever is soonest) Retailer Warranty*. Should the mileage exceed 60,000 miles within the first two years, the manufacturer’s two-year warranty will still be valid. Full details of the three-year warranty are available from your authorised Volkswagen retailer or repairer.

* All warranty work must be completed by an authorised Volkswagen retailer or repairer.

Three-year Paint Warranty

The paintwork of the Golf Estate is covered against manufacturing defects for a period of three years. Naturally, the Golf Estate must be cared for in compliance with the operating instructions which will be found in your vehicle handbook. Please consult your authorised Volkswagen retailer or repairer for full warranty details.

12-year Body Protection Warranty

The internal body sections and panels of the Golf Estate are covered against rusting through from the inside for 12 years. Naturally, the Golf Estate must be cared for in compliance with the operating instructions. Please consult your authorised Volkswagen retailer or repairer for full warranty details.

Approved Accessories

A comprehensive range of accessories from alloy wheels to carpet mats is available to complement the factory-fitted option list. Volkswagen approved accessories purchased from and fitted by your authorised Volkswagen retailer at the point of vehicle sale will also benefit from the three-year vehicle warranty.

Extended Warranty

If you order the Volkswagen Extended Warranty as an option when buying your new Golf Estate then you get the 100% Volkswagen Warranty and you can continue to enjoy comprehensive Volkswagen protection against many unforeseeable repair costs. Designed to your needs, you can purchase an extra one or two year’s warranty up to a maximum of five years or 90,000 miles.

Service Intervals

Volkswagen are pleased to offer you a choice on how your Golf Estate is serviced. The appropriate selection is entirely dependent on how the car is likely to be driven and its general use. To help you identify which type of service would be most suitable, please refer to the following guide.

The Fixed Service is recommended for vehicles that will cover less than 10,000 miles in 12 months and if the vehicle is likely to be used in the following way:

- Predominantly urban driving, short journeys with frequent cold starts
- Activities regularly producing high engine loading, e.g. frequent hill climbs, driving with vehicle fully loaded and towing
- Uneconomical driving style using high rpms with heavy acceleration and heavy braking

The service intervals for the Fixed Service are as follows:

- Oil change service Every 10,000 miles/1 year (whichever is soonest)
- Interval service Every 20,000 miles/2 years (whichever is soonest)
- Inspection service Every 40,000 miles/3 years (whichever is soonest)

The Flexible Service is recommended for vehicles with a daily mileage of more than 25 miles where the vehicle is driven regularly mainly on longer distance journeys. The vehicle is driven mainly at a constant speed with minimum vehicle and engine loading, minimal towing and driven in an economical manner.

With the Flexible Service the vehicle can cover anywhere between 10,000[†] and a maximum of 18,000[†] miles or 24 months (whichever is soonest) between oil changes. Inspection service is typically in the third year of ownership and thereafter every second year, for vehicles with an approximate annual mileage of 10,000 miles.

[†] Please note that mileages are approximate as the service indicator system uses kilometres as the distance measurement. Please consult your authorised Volkswagen retailer or repairer for advice and full details.

Volkswagen Insurance[‡]

We want you to start enjoying your new car from day one and thanks to Volkswagen Insurance complimentary seven day cover, you can. Call free on 0800 316 7892 (lines are open Monday to Friday 8 am – 9 pm and Saturday 9 am – 5 pm), provide a few details and a cover note will be sent to your retailer. They will then tax your car and you can drive it away.

Visit www.insurewithvolkswagen.co.uk for details of the full range of insurance products available.

Here you can also get a quote for your annual car insurance and buy it online too. All of our insurance products are designed to ease the pain of making a claim.

[‡] Volkswagen Insurance is a trading name of Volkswagen Insurance Service (Great Britain) Limited, an appointed representative of Volkswagen Financial Services (UK) Limited, Brunswick Court, Yeomans Drive, Blakelands, Milton Keynes MK14 5LR. Registered in England number 2835230. Volkswagen Insurance is sold, underwritten and administered by Allianz Insurance plc registered in England number 84638. Registered office 57 Ladymead, Guildford, Surrey GU1 1DB. Volkswagen Financial Services (UK) Limited and Allianz Insurance plc are authorised and regulated by the Financial Services Authority. Volkswagen Financial Services (UK) Limited and Allianz Insurance plc are not part of the same corporate group.

Volkswagen Finance[±]

Volkswagen Finance specialises in providing funding solutions for Volkswagen drivers. Whether your Volkswagen is for private or business use, you can choose from a range of funding options.

- Solutions – a personal contract plan
- Hire purchase
- Lease purchase
- Finance lease
- Contract hire

With all Volkswagen Finance products you can choose a fixed-cost maintenance plan to help you budget for your servicing and maintenance costs.

No matter what finance product you choose, your local Volkswagen retailer will be able to provide you with a personalised quote that could meet your budget and vehicle needs.

[±] Volkswagen Finance is a trading name of Volkswagen Financial Services (UK) Limited. An offer of finance depends on certain conditions. Available to people over 18 in the UK only.

Volkswagen Roadside Assistance

Every new car is registered for Volkswagen Roadside Assistance for one year. This provides vehicle home and roadside recovery in the unlikely event of a breakdown in the UK and Europe (subject to conditions). Volkswagen Roadside Assistance can also be purchased for subsequent years. For full details, please contact your authorised Volkswagen retailer or repairer.

Tax Free Sales

For full details, please contact your authorised Volkswagen retailer.

CO₂ Emissions

Increased weight of a vehicle, including higher trim levels and the addition of options will have a detrimental influence on the level of fuel consumption and CO₂ emissions produced.

The CO₂ and fuel consumption figures are obtained from tests on a representative vehicle of the type, conducted and approved in accordance with Council Directive 80/1268/EEC as amended by Directive 1999/100/EC (or later) on the approximation of the laws of the member states relating to the carbon dioxide emissions and the fuel consumption of motor vehicles.

Please Note

Some illustrations in this brochure do not necessarily reflect UK specifications and may not be available. In particular, controls and some items of equipment are positioned differently for the UK.

The specifications contained in this brochure are for information purposes only and are subject to change. If you require any specific feature, you must consult your authorised Volkswagen retailer who is regularly updated with any change in specification. Please check model availability and full specification details with your authorised Volkswagen retailer prior to ordering.

Note: we would like to advise you that telephone calls to Volkswagen Customer Care may be monitored and recorded as part of our training and quality assurance processes. All our monitoring and recording processes meet OfTel regulations.