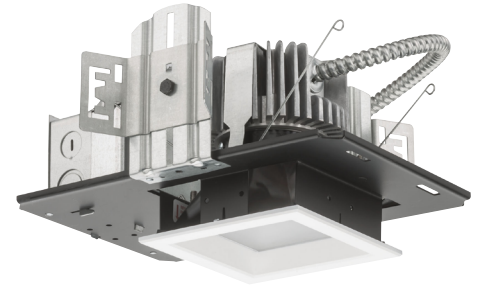


General Illumination Square Cleanroom Downlight

4"



OVERVIEW

Feature Set

- Wipe down flush or regressed lens
- NSF2 Splash/Non-food Zone
- Fully serviceable and upgradeable lensed LED light engine
- 70% lumen maintenance at 60,000 hours
- 2.5 SDCM; 85 CRI typical, 90+ CRI optional
- IP66 rated room-side, Fixtures are wet location, covered ceiling
- ISO 5 Class 100
- Anti-microbial paint finish, optional

Distribution



Superior Performance: (Flush, Clear Lens)

Nominal Lumens	250	500	750	1000	1500	2000	2500
Delivered	222	445	667	866	1316	1730	2224
Wattage	3.1	7.2	7.9	8.8	13.7	19.5	25.7
Efficacy	71.6	61.8	84.4	98.4	96.1	88.7	86.5

*Lumen output for CRI80 - 3500K

COMPLEMENTARY PRODUCTS

Coordinated Apertures | Multiple Layers of Light



General Illumination Layer | EVO



High Center Beam Layer | Incito



EVO + Incito — Multiple Layers of Light

Core



Healthcare



Special Applications



A+ Capable options indicated by this color background.

Luminaire Type:

Catalog Number:

EXAMPLE: EVO4SQCR 35/20 DFRAMF SOL MVOLT EZ10

Series	Color Temperature	Nominal Lumen Values	Lens Setting	Lens	Voltage
EVO4SQCR	27/ 2700 K	02 250 lumens	DFR Regressed lensed white painted trim	SOL Textured Lens SMO Smooth Clear Lens	MVOLT 120 277
	30/ 3000 K	05 500 lumens	DFF Flush lensed white painted trim		
	35/ 3500 K	07 750 lumens	DFRBR Regressed lensed black painted trim		
	40/ 4000 K	10 1000 lumens	DFFBR Flush lensed black painted trim		
	50/ 5000 K	15 1500 lumens	DFRAMF Regressed lensed trim with anti-microbial finish		
		20 2000 lumens	25 2500 lumens		

Driver ¹	Control Interface	Options
EZ10 eldoLED 0-10V ECOdrive. Linear dimming to 10% min.	NLT ² nLight® dimming pack controls	SF Single fuse. Specify 120V or 277V.
EZ1 eldoLED 0-10V ECOdrive. Linear dimming to 1% min.	NLTER ^{2,3} nLight® dimming pack controls emergency circuit	ELR ⁴ Emergency battery pack, 10W, with remote test switch
EZB eldoLED 0-10V SOLOdrive. Logarithmic dimming to <1%.		E10WCPR ⁴ Emergency battery pack, 10W Constant Power, CA Title 20 compliant with remote test switch
EDAB eldoLED SOLOdrive DALI. Logarithmic dimming to <1%.		BGTD Bodine generator transfer device. Specify 120V or 277V.
		90CRI High CRI (90+).
		CP Chicago Plenum.

ACCESSORIES — order as separate catalog numbers (shipped separately)

ISD BC 0-10V wallbox dimmer. Refer to [ISD-BC](#).

ORDERING NOTES

1. Refer to [TECH-240](#) for compatible dimmers.
2. Specify voltage.
3. For use with generator supply EM power. Will require an emergency hot feed and normal hot feed.
4. 11" of plenum depth or top access required for battery pack maintenance. Not available with CP option.

Optical Assembly

Fully serviceable and upgradeable lensed LED light engine suitable for field maintenance or service from below the ceiling. Unitized optics shall have mechanical attachment of the light engine to the lower reflector for complete optical alignment with anti-microbial flush and regressed lenses.

Electrical

The luminaire shall operate from a 50 or 60 Hz ±3 Hz AC line over a voltage ranging from 120 VAC to 277 VAC. The fluctuations of line voltage shall have no visible effect on the luminous output. The luminaire shall have a power factor of 90% or greater at all standard operating voltages and full luminaire output. Sound Rated A+. Driver shall be >80% efficient at full load across all input voltages. Input wires shall be 18AWG, 300V minimum, solid copper. 0-10V dimming drivers available with choice of 10%, 1% or <1% dimming levels.

Controls

Luminaire shall be equipped with interface for nLight wired network with integral power supply as per specification.

Dimming

The luminaire shall be capable of continuous dimming without perceivable stroboscopic flicker as measured by flicker index (ANSI/IES RP-16-10) over a range of 100 – 10%, 100 – 1.0% or 100 – 0.1% of rated lumen output with a smooth shut off function to step to 0%. eldoLED LED drivers shall conform to IEEE P1789 standards. Alternatively, manufacturers must demonstrate conformance with product literature and testing which demonstrates this performance. Systems that do not meet IEEE P1789 will not be considered. Driver is inaudible in 24dB environment, and stable when input voltage conditions fluctuate over what is typically experienced in a commercial environment.

Construction

Maximum 1-1/2" ceiling thickness
Telescopic mounting bars maximum of 27-1/2" and minimum of 20-1/4"
The assembly and manufacturing process for the luminaire shall be designed to assure all internal components are adequately supported to withstand mechanical shock and vibration.
25°C ambient temperature standard (1/2" clearance on all sides from non-combustible materials in non-IC applications, unless marked spacing noted otherwise). For use in insulated ceilings, a 3" clearance on all sides from insulation is required (unless marked spacing noted otherwise).

Listings

Fixtures are CSA certified to meet US and Canadian standards; wet location, covered ceiling
IP66 room-side.
Wipe-down flush or regressed lens.
NSF2 Splash/Non-food Zone

Photometrics

LEDs tested to LM-80 standards. Measured by IESNA Standard LM-79-08 in an accredited lab. Lumen output shall not decrease by more than 30% over the minimum operational life of 60,000 hours.
Color appearance from luminaire to luminaire of the same type and in all configurations, shall be consistent both initially and at 6,000 hours and operate within a tolerance of <2.5 MacAdam ellipse as defined by a point at the intersection of the CCT line and the black body locus line in CIE chromaticity space.

Buy American

This product is assembled in the USA and meets the Buy America(n) government procurement requirements under FAR, DFARS and DOT. Please refer to www.acuitybrands.com/buy-american for additional information.

Warranty

5-year limited warranty. Complete warranty terms located at: www.acuitybrands.com/support/customer-support/terms-and-conditions

Note:

Actual performance may differ as a result of end user environment and application. All values are design or typical values, measured under laboratory conditions at 25 °C.

A+ Capable Luminaire

This item is an A+ capable luminaire, which has been designed and tested to provide consistent color appearance and out-of-the-box control compatibility with simple commissioning.

- All configurations of this luminaire meet the Acuity Brands' specification for chromatic consistency
- This luminaire is part of an A+ Certified solution for nLight® control networks when ordered with drivers marked by a shaded background*
- This luminaire is part of an A+ Certified solution for nLight® control networks, providing advanced control functionality at the luminaire level, when selection includes driver and control options marked by a shaded background*

To learn more about A+, visit www.acuitybrands.com/aplus.

*See ordering tree for details

DFF SMO - Flush Clear							
Nominal Lumens	250	500	750	1000	1500	2000	2500
Delivered	222	445	667	866	1316	1730	2224
Wattage	3.1	7.2	7.9	8.8	13.7	19.5	25.7
Efficacy	71.6	61.8	84.4	98.4	96.1	88.7	86.5

*Lumen output for CRI80 - 3500K

DFF SOL - Flush Textured							
Nominal Lumens	250	500	750	1000	1500	2000	2500
Delivered	203	407	610	792	1203	1582	2034
Wattage	3.1	7.2	7.9	8.8	13.7	19.5	25.7
Efficacy	65.5	56.5	77.2	90.0	87.8	81.1	79.1

*Lumen output for CRI80 - 3500K

DFR SMO - Regressed Clear							
Nominal Lumens	250	500	750	1000	1500	2000	2500
Delivered	203	405	608	789	1199	1577	2027
Wattage	3.1	7.2	7.9	8.8	13.7	19.5	25.7
Efficacy	65.5	56.3	77.0	89.7	87.5	80.9	78.9

*Lumen output for CRI80 - 3500K

DFR SOL - Regressed Textured							
Nominal Lumens	250	500	750	1000	1500	2000	2500
Delivered	187	374	561	728	1106	1455	1870
Wattage	3.1	7.2	7.9	8.8	13.7	19.5	25.7
Efficacy	60.3	51.9	71.0	82.7	80.7	74.6	72.8

*Lumen output for CRI80 - 3500K

EVO - eldoLED Driver Default Dimming Curve			
Nomenclature	Min Dimming	Driver Dim Curve	Control Dim Curve
EZ10	10%	Linear	Linear/Logarithmic
EZ1	1%	Linear	Linear/Logarithmic
EXA1	1%	Linear	Linear/Logarithmic
EZB	<1%	Logarithmic	Linear
EDAB	<1%	Logarithmic	Linear
EXAB	<1%	Logarithmic	Linear
EDXB	<1%	Square	Linear

Lumen Output Multiplier		
CRI	CCT	Multiplier
80	2700K	0.96
	3000K	1.00
	3500K	1.00
	4000K	1.01
90	5000K	1.07
	2700K	0.80
	3000K	0.83
	3500K	0.85
	4000K	0.87
	5000K	0.91

Driver		Control Provided (note: 347V/UVOLT versions provided with 347 option selected)			
Nomenclature	Description	NLT	NLTER	NLTAIR2	NLTAIRER2
GZ10	0-10V driver dims to 10%	nPP16 D EFP	nPP16 D ER EFP	RPP20 D 24V G2	RPP20 D 24V ER G2
GZ1	0-10V driver dims to 1%	nPP16 D EFP	nPP16 D ER EFP	RPP20 D 24V G2	RPP20 D 24V ER G2
EZ10	eldoLED 0-10V ECODrive	nPS 80 EZ	nPS 80 EZ ER	RPP20 D 24V G2	RPP20 D 24V ER G2
EZ1	eldoLED 0-10V ECODrive	nPS 80 EZ	nPS 80 EZ ER	RPP20 D 24V G2	RPP20 D 24V ER G2
EZB	eldoLED 0-10V SOLOdrive	nPS 80 EZ	nPS 80 EZ ER	RPP20 D 24V G2	RPP20 D 24V ER G2

How to Estimate Delivered Lumens in Emergency Mode

Delivered Lumens = 1.25 x P x LPW

P = Output power of emergency driver. P = 10W for PS1055CP

LPW = Lumen per watt rating of the luminaire. This information is available on the ABL luminaire spec sheet.

*Dimensions in inches [centimeters]

Aperture: 4-5/16" (11)

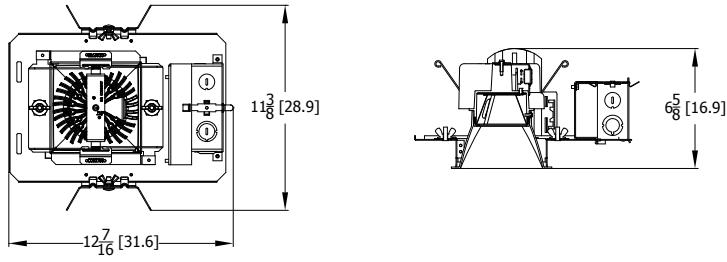
Ceiling Opening: 5-1/8" (13) self-flanged

Overlap trim: 5-7/16" (13.8)

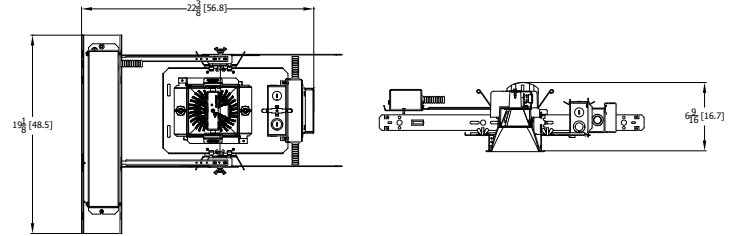
5-1/4" (13.3) flangeless

DIMENSIONAL DATA

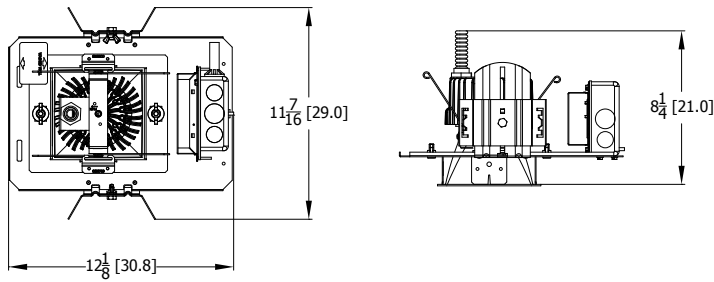
Standard



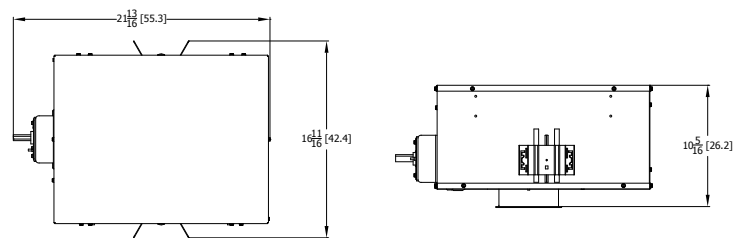
Battery Pack



CP Standard

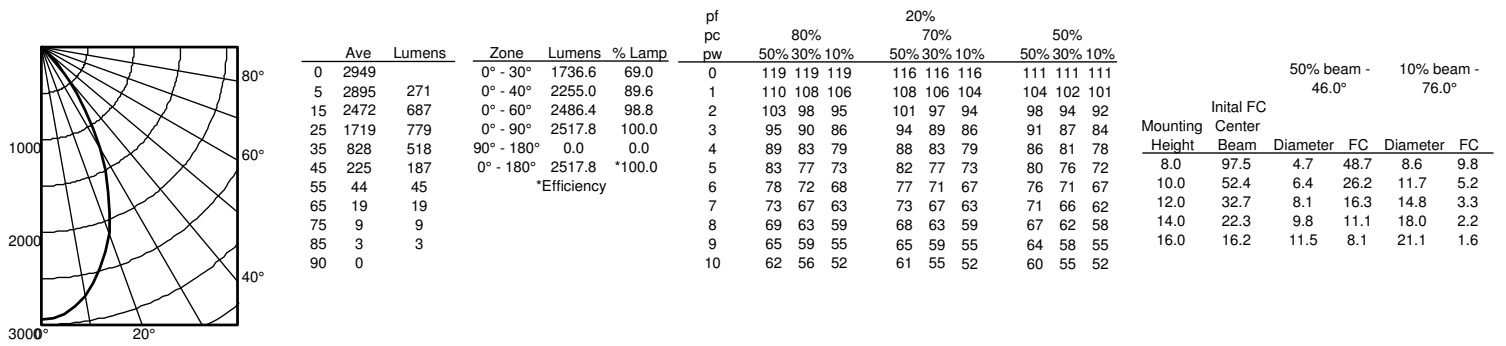


CP Enclosed For Use With Battery Pack & nLight

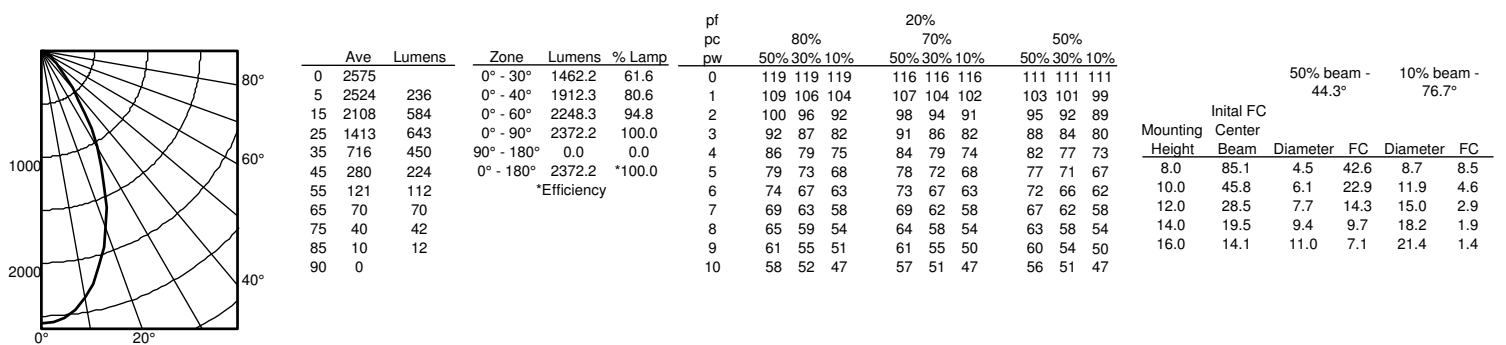


Photometry

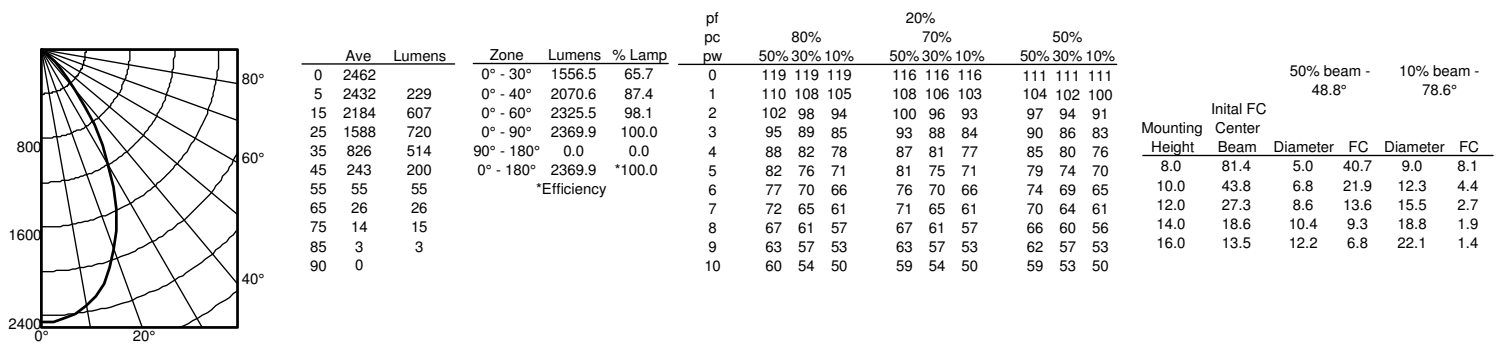
EV04SQCR 35/25 DFF SMO INPUT WATTS: 36.9W, DELIVERED LUMENS: 2517LM, LPW= 68.2LM, 0.84 S/MH, TEST NO. PT06172212P2



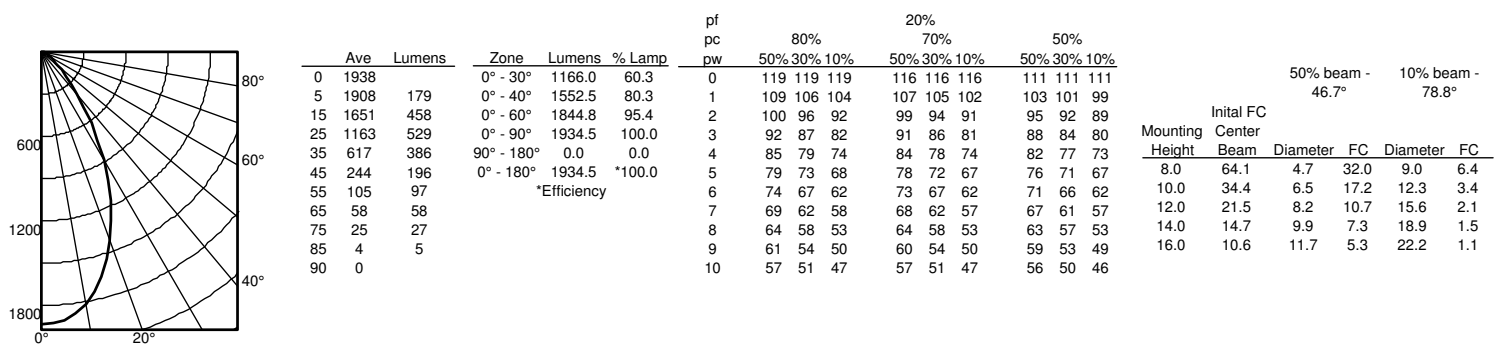
EV04SQCR 35/25 DFF SOL INPUT WATTS: 36.8W, DELIVERED LUMENS: 2372LM, LPW= 64.5LM, 0.84 S/MH, TEST NO. PT06172211P2



EV04SQCR 35/25 DFR SMO INPUT WATTS: 36.9W, DELIVERED LUMENS: 2379LM, LPW= 64.5LM, 0.84 S/MH, TEST NO. PT06172210P2



EV04SQCR 35/25 DFR SOL INPUT WATTS: 36.9W, DELIVERED LUMENS: 1935LM, LPW= 52.4LM, 0.84 S/MH, TEST NO. PT06172209P2



nLight® AIR is the ideal solution for retrofit or new construction spaces where adding communication wiring is cost prohibitive. The integrated nLight AIR rPP20 Power Pack is part of each EVO Luminaire ordered with the NLTAIR option. These individually addressable controls offer the ultimate in flexibility during initial setup and for space repurposing.

nLight® AIR Control Accessories

Order as separate catalog number. Visit [nLight AIR](#).

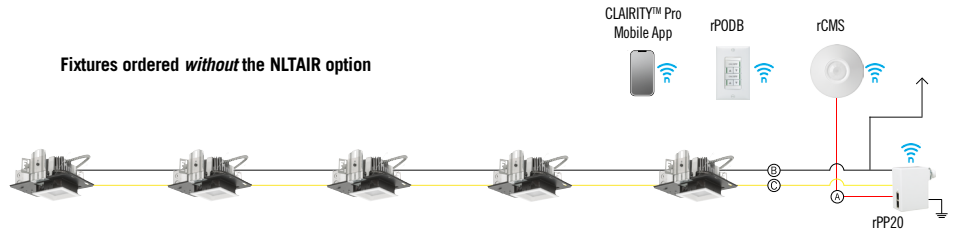
Wall Switches	Model Number
On/Off single pole	rPODB (color) G2
On/Off two pole	rPODB 2P (color) G2
On/Off & raise/lower single pole	rPODB DX (color) G2
On/Off & raise/lower two pole	rPODB 2P DX (color) G2

nLight® AIR Control Accessories (cont.)

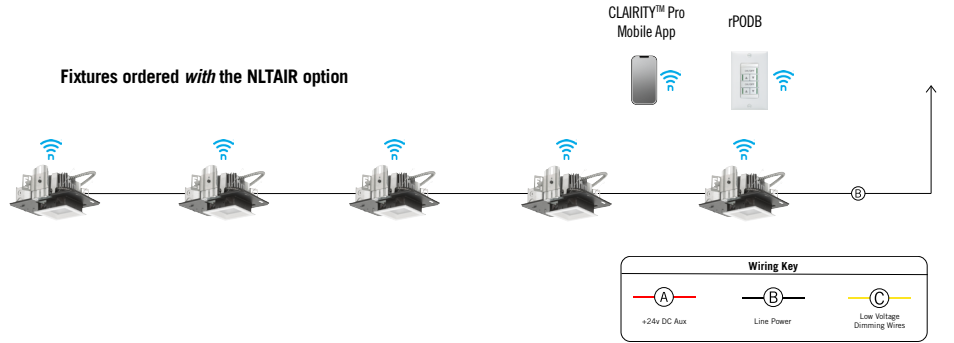
Occupancy Sensors (PIR/dual tech)	Model Number
Small motion 360°, ceiling	rCMS 9 / rCMS PDT 9
Large motion 360°, ceiling	rCMS 10 / rCMS PDT 10

Possibilities for nLight® AIR

Fixtures ordered *without* the NLTAIR option



Fixtures ordered *with* the NLTAIR option



nLight® The nLight® solution is a digital networked lighting control system that provides both energy savings and increased user configurability by cost effectively integrating time-based, daylight-based, sensor-based and manual lighting control schemes.

nLight® Wired Control Accessories

Order as separate catalog number. Visit [nLight](#).

Wall Switches	Model Number
On/Off single pole	nPODM XX
On/Off two pole	nPODM 2P XX
On/Off & raise/lower single pole	nPOD DX XX
On/Off & raise/lower two pole	nPODM 2P DX XX
Graphic touchscreen	nPOD GFX XX

Photocell Controls	Model Number
Dimming	nCM ADCX

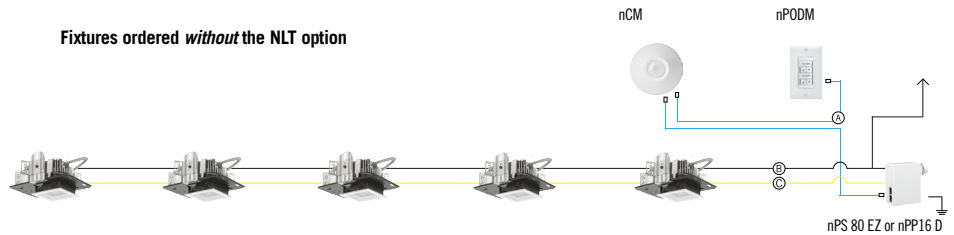
nLight® Wired Control Accessories (cont.)

Occupancy Sensors (PIR/dual tech)	Model Number
Small motion 360°, ceiling	nCM 9 / nCM PDT 9
Large motion 360°, ceiling	nCM 10 / nCM PDT 10
Wide View	nWV 16 / nWV PDT 16
Wall switch with raise/lower	nWSX LV DX / nWSX PDT LV DX

Cat-5 Cables (plenum rated)	Model Number
10', CAT5	CAT5 10FT J1
15', CAT5	CAT5 15FT J1

Possibilities for nLight® wired

Fixtures ordered *without* the NLT option



Fixtures ordered *with* the NLT option

