

Google Cloud Print Guide



Definitions of notes

We use the following note style throughout this user's guide:

NOTE	Notes tell you how you should respond to a situation that may arise, or give tips about how the operation works with other features.
-------------	--

Trademarks

The Brother logo is a registered trademark of Brother Industries, Ltd.

Brother is a trademark of Brother Industries, Ltd.

Google, Google Drive, Google Cloud Print, Google Chrome, Chrome OS, Android and Gmail are trademarks of Google Inc. Use of these trademarks is subject to Google Permissions.

Each company whose software title is mentioned in this manual has a Software License Agreement specific to its proprietary programs.

Any trade names and product names of companies appearing on Brother products, related documents and any other materials are all trademarks or registered trademarks of those respective companies.

Open Source Licensing Remarks

Brother machines use open-source software for Google Cloud Print.

To see the open source licensing remarks, go to your model's home page on Brother Solutions Center (<http://solutions.brother.com/>), click **Manuals** and select your language.

©2013 Brother Industries, Ltd. All rights reserved.

Table of Contents

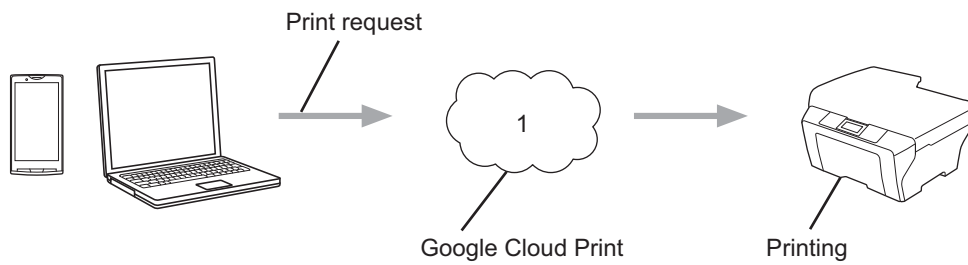
1	Introduction	1
	Overview.....	1
	Hardware requirements	2
	Compatible operating systems and applications	2
	Network settings	2
	Setting up Google Cloud Print	3
	Step-by-step overview	3
	How to create a Google account	4
	How to register your machine with Google Cloud Print	4
2	Printing	7
	Printing using Google Cloud Print.....	7
	How to print from Google Chrome™ browser or Chrome OS™	7
	How to print from Google Drive™ for mobile.....	7
	How to print from Gmail™ webmail service for mobile	8
A	Troubleshooting	9
	If you are having difficulty with your machine	9

1

Introduction

Overview

Google Cloud Print™ is a service provided by Google that allows you to print to a printer registered to your Google account using a network-compatible device (such as a mobile phone or computer), without installing the printer driver on the device.



1 Internet

Hardware requirements

Compatible operating systems and applications

Google Cloud Print is compatible with the following operating systems and applications (as of July 2012):

Operating systems

- Chrome OS™
- Android™ 2.1 or greater
- iOS 3.0 or greater

Applications that can be used for printing

- Applications for Chrome OS™
- Google Chrome™ browser
- Google Drive™ for mobile
- Gmail™ webmail service for mobile

Visit the Google website (<http://www.google.com/cloudprint/learn/apps.html>) for more information about compatible operating systems and applications.

Network settings

In order to use Google Cloud Print, your Brother machine must be connected to a network that has access to the Internet, either through a wired or wireless connection. See your Brother machine's Quick Setup Guide to connect and configure your machine appropriately.

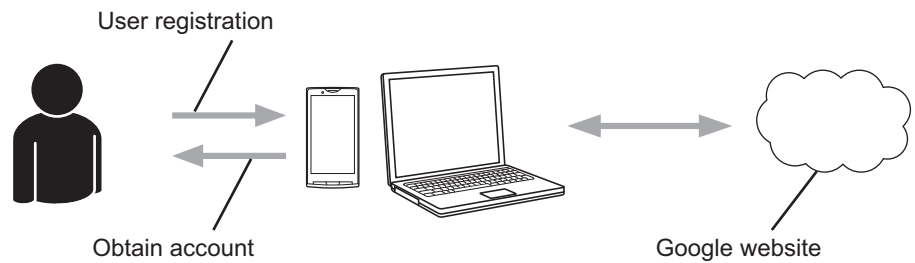
Setting up Google Cloud Print

Step-by-step overview

Configure the settings using the following procedure:

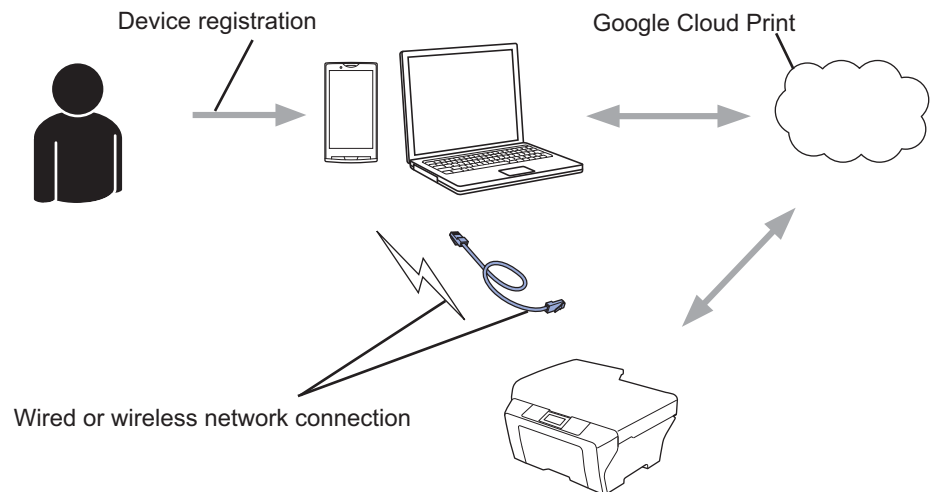
Step 1: Create a Google account (see page 4).

Access the Google website (<https://accounts.google.com/signup>) using a computer or mobile device and create an account. You must sign in to your Google account in order to use Google Cloud Print. (If you already have an account, there is no need to create an additional account.)



Step 2: Register your machine with Google Cloud Print (see page 4).

Register your machine with Google Cloud Print using your computer's or your mobile device's web browser.



The machine can now use the service.

How to create a Google account

In order to use Google Cloud Print, you must have a Google account and sign in to your account. If you do not have an account, use a computer or mobile device to access the Google website (<https://accounts.google.com/signup>) and create an account.

If you already have a Google account, there is no need to create an additional account. Continue with the next procedure, *How to register your machine with Google Cloud Print*.

How to register your machine with Google Cloud Print

You must register your machine with Google Cloud Print using Web Based Management (web browser). A standard web browser can be used to manage your machine using the Hypertext Transfer Protocol (HTTP).

NOTE


- The screens in this section are examples from an inkjet machine.
- There is no limit on the number of printers you can register with Google Cloud Print.

- 1 Before you begin to register your machine, confirm that the correct time and date are set on the control panel of the machine. See the Quick Setup Guide included with your machine for instructions on setting the correct time and date.
- 2 Confirm that the machine is connected to the same network as the computer or mobile device.
- 3 Open the web browser on your computer or mobile device.
- 4 Type “http://machine’s IP address/” into your browser’s address bar (where “machine’s IP address” is your machine’s IP address).

- For example:

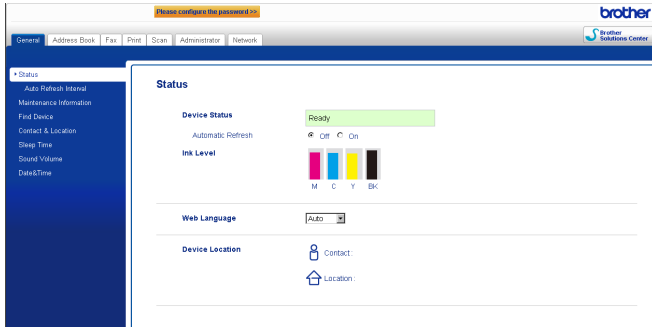
```
http://192.168.1.2/
```

NOTE

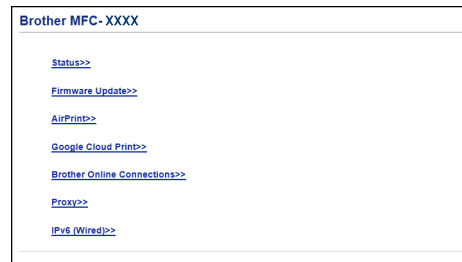
- You can see your machine’s IP address in the Network menu on the control panel of your machine. For more information, see your Brother machine’s Software and Network User’s Guide (or Network User’s Guide, depending on your model).
- If you have set the login password for Web Based Management, type your password in the **Login** box, then click .

5 Depending on your machine, one of the following screens is displayed:

(A)

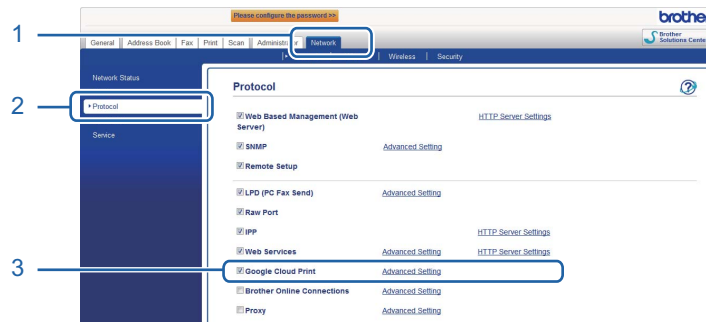


(B)



Do one of the following:

- If screen (A) is displayed



- 1 Click **Network**.
- 2 Click **Protocol**.
- 3 Make sure that **Google Cloud Print** is selected, and then click **Advanced Setting**. Go to step 6.

- If screen (B) is displayed, click **Google Cloud Print**, and then go to step 6.



- 6 Make sure that **Status** is set to **Enabled**. Click **Register**.

Google Cloud Print

Status Enabled

Registration Status Unregistered

Device Name Brother MFC-XXXX

Please read and agree to the following Terms of Use before clicking "Register".
[Terms of Use>>](#)

Register

- 7 Click **Google**.
- 8 The sign-in screen for Google Cloud Print will be displayed. Sign in with your Google account and follow the on-screen instructions to register your machine.
- 9 When you have finished registering your machine, return to the Web Based Management screen and make sure that **Registration Status** is set to **Registered**.

Google Cloud Print

Submit OK

Status Enabled

Registration Status Registered

Unregister this device

Google Account

E-mail xxxxx@gmail.com

Device Name Brother MFC-XXXX

Cancel Submit

NOTE

If your machine supports the Secure Function Lock feature, printing via Google Cloud Print is possible even if PC print for each user is restricted. To restrict printing via Google Cloud Print, disable Google Cloud Print using Web Based Management or set the Secure Function Lock feature to Public Mode, and then restrict PC print for public. For more information, see your Brother machine's Advanced User's Guide or Software and Network User's Guide (or Network User's Guide, depending on your model).

Printing using Google Cloud Print

The printing procedure varies depending on the application or device you are using. Google Chrome™ browser, Chrome OS™, Google Drive™ for mobile and the Gmail™ webmail service for mobile are used in the example below.

NOTE

- There is no limit on the number of printers you can register with Google Cloud Print.
- Some encrypted PDF files cannot be printed.
- When printing a PDF file that uses fonts that are not embedded in the file, characters may be replaced with characters of a different font or may be garbled.
- When printing a PDF that includes transparent objects, the transparency setting will be ignored and the file will be printed with that setting off.

How to print from Google Chrome™ browser or Chrome OS™


- 1 Make sure your machine is turned on.
- 2 On the web page that you want to print, click the Chrome™ menu icon, and then click **Print** (you can also use the keyboard shortcut: Ctrl+P).
- 3 Select your machine from the printer list.
- 4 Change print options such as the media type and paper size, if needed.

NOTE

Only settings that can be changed are displayed.

- 5 Click **Print**.

How to print from Google Drive™ for mobile

- 1 Make sure your machine is turned on.
- 2 Access Google Drive™ from your Android™ or iOS device's web browser.
- 3 Open the document that you want to print.
- 4 Tap .
- 5 Tap **Print**.
- 6 Select your machine from the printer list.


- 7 Change print options, if needed.

NOTE

Only settings that can be changed are displayed.

- 8 Tap **Print**.

How to print from Gmail™ webmail service for mobile

- 1 Make sure your machine is turned on.
- 2 Access the Gmail™ webmail service from your Android™ or iOS device's web browser.
- 3 Open the e-mail that you want to print.
- 4 Tap .

NOTE

If **Print** is displayed beside the attachment file name, you can print the attachment. Tap **Print** and then go to step 6.

- 5 Tap **Print**.
- 6 Select your machine from the printer list.
- 7 Change print options, if needed.

NOTE

Only settings that can be changed are displayed.

- 8 Tap **Print**.

A

Troubleshooting

This chapter explains how to resolve typical problems you may encounter when using Google Cloud Print with your Brother machine. If, after reading this chapter, you are unable to resolve your problem, visit the Brother Solutions Center at: <http://solutions.brother.com/>.

If you are having difficulty with your machine

Difficulty	Suggestions
My Brother machine is not displayed in the printer list.	Make sure your machine is turned on.
	Use Web Based Management to confirm that Google Cloud Print is enabled and your machine is registered with Google Cloud Print (see <i>How to register your machine with Google Cloud Print</i> on page 4).
I cannot print.	Make sure your machine is turned on.
	Confirm your network settings (see <i>Network settings</i> on page 2).
	Certain files may not be able to be printed, or may not appear exactly as they are displayed.
I received the error message: Unable to connect to Google. Please check your network settings.	Make sure your machine is connected to a network with Internet access.
I received the error message: Please set the date and time.	Verify that the date and time are set correctly on your machine (for more information, see your machine's Quick Setup Guide).

brother®

**Visit us on the World Wide Web
<http://www.brother.com/>**



www.brotherearth.com