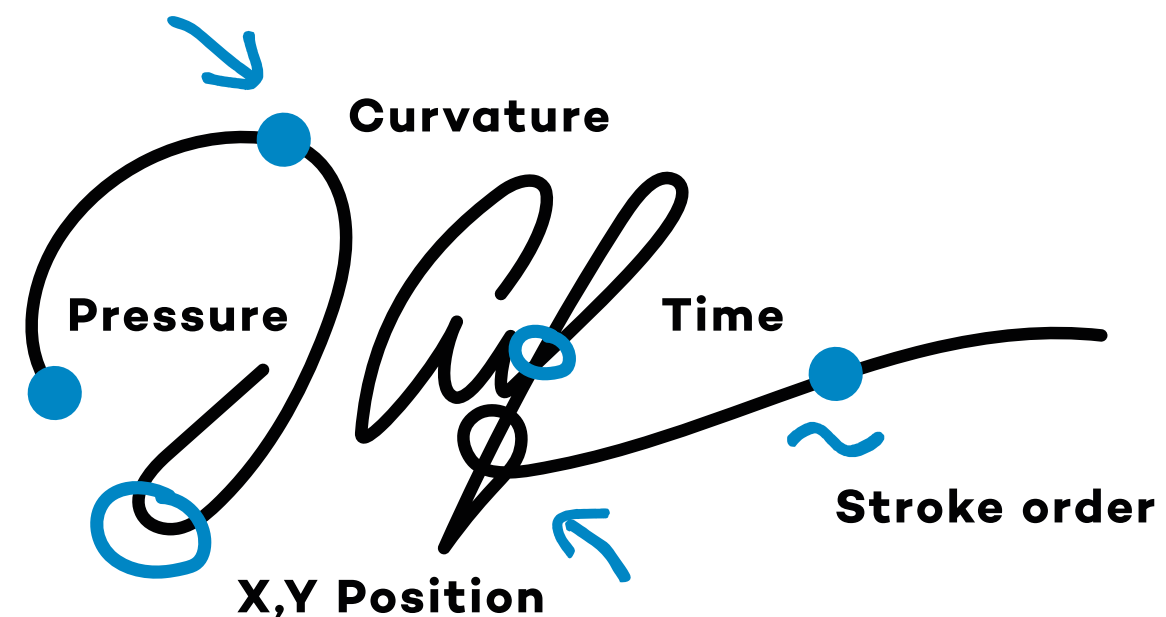


Data Sheet

Wacom Ink SDK for signature

*Easy electronic
signature
integration*

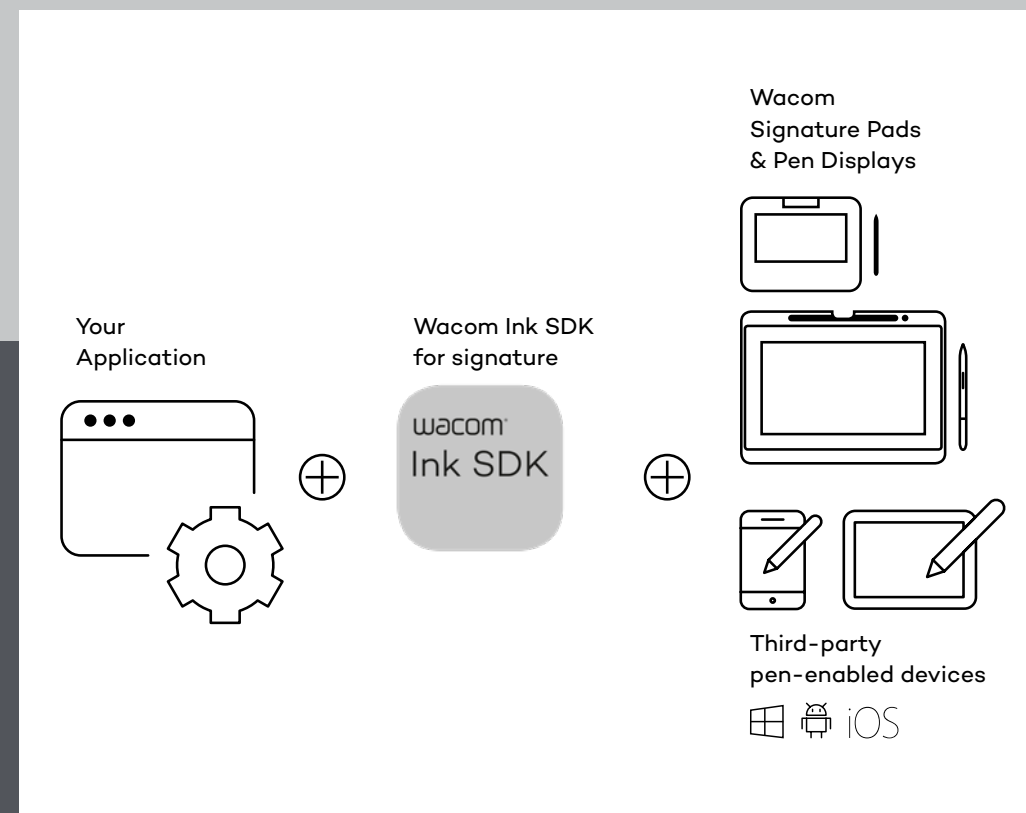
Enable biometrically-accurate handwritten
electronic signatures on Wacom and third-party
pen-enabled devices



WACOM® for Business

Capture handwritten signatures

On Wacom and third-party devices



The Wacom Ink SDK for Signature makes it easy to capture handwritten electronic signatures within applications accessed via Wacom and third-party pen-enabled devices.

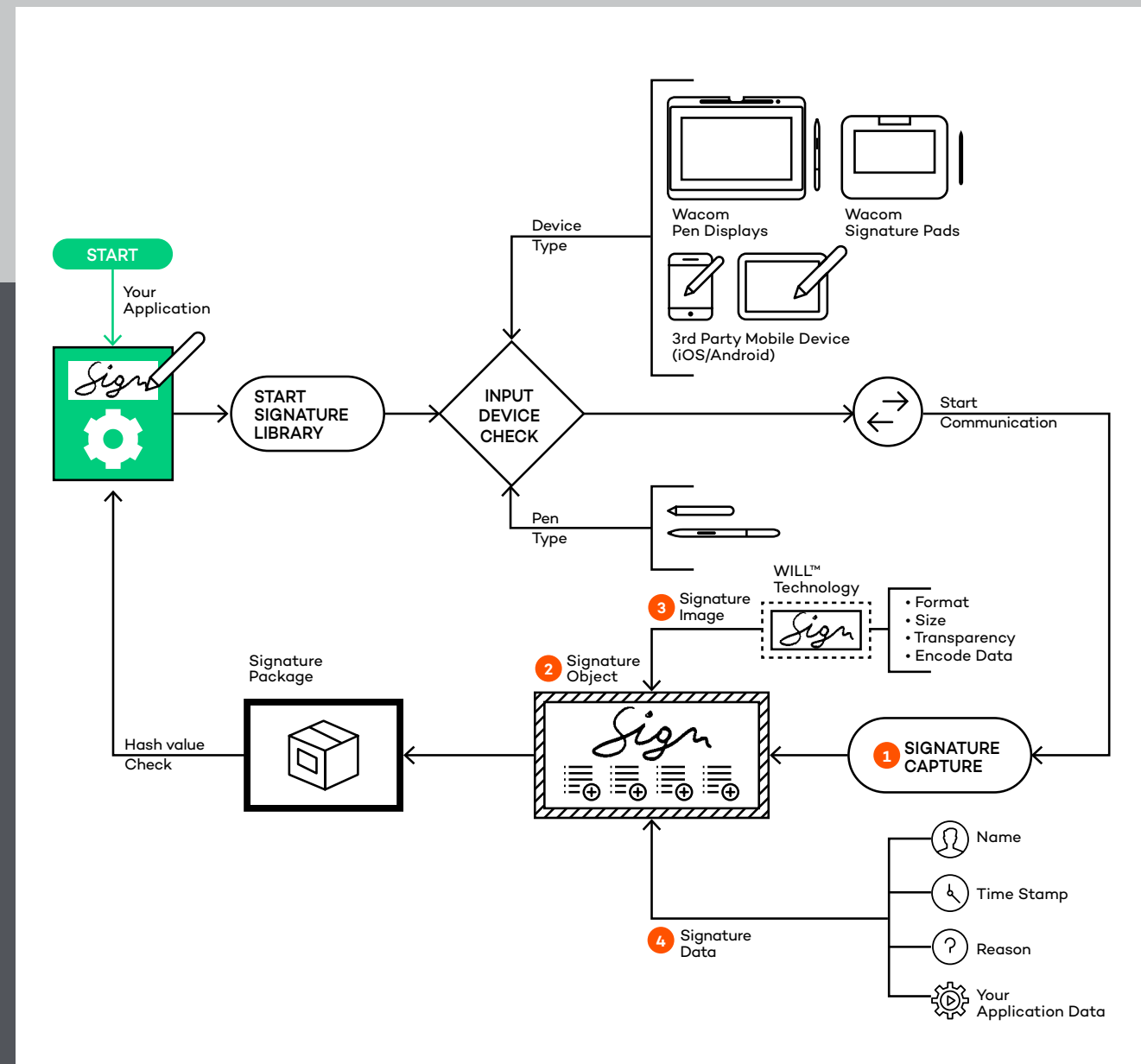
OVERVIEW

The Wacom Ink SDK for signature allows solution providers to easily integrate support for capturing biometrically-accurate handwritten electronic signatures on pen-enabled devices.

Specifically, the Wacom Ink SDK for signature provides the Signature Library used to capture handwritten signatures from a Wacom or third-party pen tablet/mobile device. The library simplifies the interaction with Wacom pen tablets and provides an API to manage and display the signatures. The SDK's basic functionality is available for free to use with Wacom devices running Windows. The paid, licensed version of the SDK includes enhanced features and can be used to enable Wacom digital ink on third-party devices running Windows, iOS and Android.

KEY BENEFITS

- **Straightforward integration:** The SDK is designed to make it easy for solution providers to integrate support for in-person handwritten electronic signatures into customer document workflows.
- **Biometric accuracy:** Each signature captures biometric information including pen position, pressure, inclination* and speed of movement which can be used for verification purposes.
- **Device flexibility:** Support for Wacom devices, third-party mobile devices running Android or iOS, and Microsoft Ink-enabled devices.
- **Platform-independence:** The signature data generated via the SDK can be shared between signature systems from different vendors.
- **Simplified compliance:** Optional built-in encryption of signatures stored in ISO or FSS (proprietary Wacom) format and rich data including, time stamp and location, supports fraud prevention for end customers.
- **Rapid ROI:** Digitizing pen and paper workflows using the SDK ensures ROI for end customers in the form of increased efficiency, faster processes and an enhanced customer experience.



wacom
Ink SDK

Four key elements

Perfect signature workflows

HOW IT WORKS

The Wacom Ink SDK for signature consists of four key elements:

1 Signature Capture

An application using the Signature Library will provide a way of starting signature capture, for example by displaying a 'sign' button.

- The signature capture function isolates the application from the type of pen input device.
- The Signature Library detects the type of connected device and automatically runs the code needed to communicate with it.
- Regardless of the device, the Signature Library allows an application to use them in a common way.

A dialog is used so that the signing process can be independent of the underlying document to which the signature will be applied. For example, if the document view has been zoomed, the signature can still be captured in the normal way and then adjusted to fit into the document display area.

2 Signature Object

The Signature Library creates a Signature Object to hold a captured signature. A signature can be created by an application either in FSS, or ISO format as defined by the ISO/IEC 19794-7 standard. FSS signatures can be saved in binary or base64 text and store Wacom pen-generated biometric information that can be used to help verify the signature as genuine. ISO signatures can be saved in binary or XML form. For additional security, both file types can be optionally encrypted in compliance with the ISO/IEC 19794-7 standard.

3 Signature Image

An API is provided to create a signature image from a Signature Object. Options include:

- Image format (png/bmp etc)
- Image size
- Transparency
- EncodeData

The EncodeData option produces an image of the signature which contains the complete SignatureObject concealed in pixel attributes (using steganography), for example.

While the data is not immediately visible in the image, the API allows the Signature Object to be extracted. The object can then be used for further processing, such as extracting signature capture details.

4 Signature Data

Data is stored in the Signature Object in a proprietary format (FSS) or ISO (as described above), and an API is provided to extract parts of it:

- Name
- Reason
- Date time stamp
- Application-specific data

One type of application-specific data is the hash of a signed document. Before starting signature capture, the application can calculate a hash value for the document and include it in the signature data. Later, the PDF application can recalculate the hash and use the API to compare the new and saved values to determine whether any changes have been made since signing. The results can then be used to indicate the validity of a signature within the document.

For further information, please refer to the documentation at:
developer-docs.wacom.com



PRODUCT VERSIONS

The Wacom Ink SDK for signature is available in free and licensed versions:

Wacom Ink SDK for signature Enterprise requires a paid license, and is available for Windows, iOS and Android. It can be used with a wide range of Wacom and third-party pen enabled devices.

Wacom Ink SDK for signature Lite – This free Windows-only version has limited functionality and is available for use with Wacom devices only.

LICENSING

Wacom Ink SDK for signature Enterprise is available for solution providers to purchase on a per seat, per year basis.

The subscription includes:

- Unlimited number of commercial applications
- No application revenue limitations
- Premium Support

For a quote, please contact your Wacom for Business representative using the details on the next page.

Wacom Ink SDK for signature versions

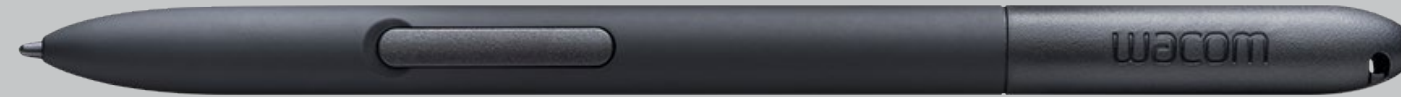
Wacom Ink SDK	Hardware compatibility	SDK contains	Functionality
Wacom Ink SDK for signature Enterprise	For Wacom devices and third-party pen-enabled devices	<ul style="list-style-type: none">• Signature library Windows Android iOS• SigCaptX library Windows	Biometric signature, Encryption, ISO support, Full browser support
Wacom Ink SDK for signature Lite	For Wacom devices only	<ul style="list-style-type: none">• Signature library lite Windows• SigCaptX library Windows	Biometric signature Full browser support

SigCaptX Note:

The Windows Signature Library is installed as ActiveX controls which can be used directly in Internet Explorer.

Other browsers (Firefox/Chrome/Edge) do not support ActiveX and require an installation of the SigCaptX library.

More human



More digital

Interested in integrating the Wacom Ink SDK for signature into your solution?

+65 6337 9394 /// Contactapbs@Wacom.com

Wacom for Business leverages decades of leadership in digital pen technology to help organizations digitize processes that require in-person interaction. We enhance Wacom and third-party pen-enabled devices with software that stores and displays biometrically accurate digital ink. These integrations empower our global network of partners to seamlessly incorporate handwritten electronic signatures and annotation into organizational workflows.

The result: Paperless processes with a familiar yet digital pen and paper feel.

Moreover, our WILL™ 3.0 (Wacom Ink Layer Language) standard for universal ink is powering new applications that will ensure the next generation of customer experiences are more human, and more digital.

WACOM® for Business



business.wacom.com

© 2019 Wacom Singapore Pte. Ltd. For more information please contact:

Wacom Singapore Pte. Ltd. · 5 Temasek Boulevard, #12-09, Suntec Tower Five, Singapore 038985

Contactapbs@Wacom.com · +65 6337 9394