

2019

DripWorks

 *Quality Drip Irrigation*

Everything you need to grow and sustain thriving plants, crops and gardens!



Galcon
Battery Timer
10% OFF
when you purchase a
DripWorks
Kit

1.800.522.3747

dripworks.com

INDEX

Kits.....	4-6
Backflow Prevention	37
Drip Tape	12
Emitters	
Basic Drip Emitters.....	25
Pressure Compensating	26,27
Emitter Tubing ½"	8
Fabric Grow Containers.....	34
Fertilizer and Injectors.....	35-37
Filters	18-20
Fittings	
½" Easy Loc Fittings	9
¾" Easy Loc Fittings	10
1" Easy Loc Fittings.....	11
Barbed Fittings	24
⅛" Microfittings.....	15
¼" Microfittings.....	15
PVC Fittings.....	48,49
Drip Tape Fittings	13
Freeze Protection	
Flush Valves.....	43
GCI Row Cover	43
Greenhouse Watering.....	41
Hold Downs.....	17
Hose Connectors	22
Hose to Pipe Adapters.....	23
Magnetic Water Conditioning	44
Manifold Setups	50
Misters.....	40
Ponds	
Underlayment	46
EPDM Rubber Liners	46
Pond Care	47
Polyethylene Liners	47
Pressure Regulators	21
Punches.....	16
Soaker Dripline ¼"	14
Sprayers	31
Adjustable	28,29
Mini-Sprinklers	30
SuperNet PC	39
Spot Spitters	31
Stakes, Supports, Risers	17
Timers	
Battery (DC).....	52-55
Electronic (AC).....	51
Solar	53
Windup	53
Tubing	
½" and ¾" Tubing.....	7
⅛" Tubing.....	16
¼" Tubing.....	16
Oval Hose	7
Valves	
Battery (DC).....	52
Electronic (AC).....	51
Manual Ball Valves	22



Experts with dirty fingernails.

When you call the DripWorks team with questions or to seek advice, we don't just read you copy from the manufacturer's manual—our answers and solutions are based on personal experience.

We've gotten our hands dirty and actually built drip irrigation systems from scratch, which means we've worked with every part we sell. We know our stuff because we've used our stuff. Ask us anything!

"DripWorks has been an absolute pleasure to work with. They carry all necessary parts and pieces to make any irrigation job, big or small, a success. The prompt and reliable customer service I receive at DripWorks is unparalleled. DripWorks is a quality company that I recommend doing business with."

Matthew Bozzo, Owner
Mendocino County Original, LLC
Farm Management & Consulting Services

Ordering is easy!

Online: Visit us at [DripWorks.com](https://www.dripworks.com)
Phone: Call us toll free at 800.522.3747
Fax: 707.459.9645
Visit: 190 Sanhedrin Circle
Willits, CA 95490

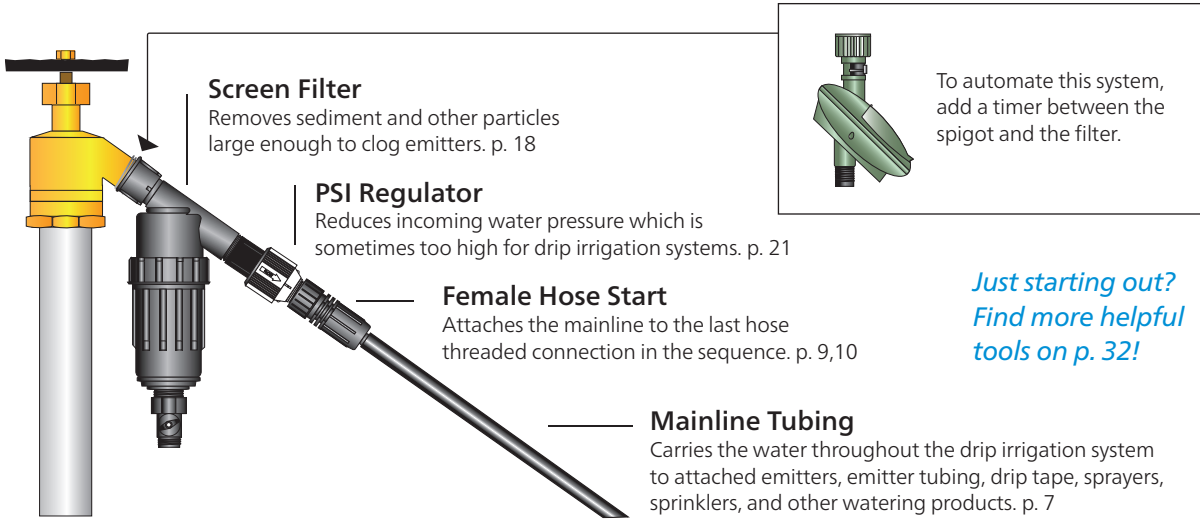
Four Steps to Take Before You Shop

- 1
- Assess your water source. Plants don't mind drinking dirty water, but if your source is particulate-heavy, your drip system can clog up. Adding a filter is an easy preventive.
- 2
- Determine your connection point. Most of us will connect to a standard hose bib, but your situation may be unique. Let us know so we can help you figure out what things you need to start on your drip system.
- 3
- Know your flow rate. This number is critical to a properly working irrigation system. Knowing gallons per hour and per minute will help you calculate the amount of available water from your connection point, so you can make the best choices for your mainline and overall system.
- 4
- Sketch out your vision. We suggest putting your basic irrigation plan on paper with some key measurements. It will help determine the amount of mainline needed and help you create a supply list.



Be sure to download our **FREE** planning guide. It offers everything you need to know to create the ideal system for your irrigation needs! Find it at dripworks.com/resources/drip-planning-guide

Typical backyard garden hose threaded start



Just starting out? Find more helpful tools on p. 32!

Everything you need for a drip tape system in one box!

Drip Tape Kits for Row Crops

For long rows and large raised beds, drip tape is a favorite for backyard gardeners. Three kit sizes meet diverse needs. See [DripWorks.com](#) for a full parts list and more information about these kits.



Small Drip Tape Kit

Waters 10 20' rows
(Expand to 1,200' of low-flow drip tape)

- 200' of Drip Tape
- Filter and Pressure Regulator
- 50' of 1/2" Mainline Tubing
- 1/2" Mainline and Drip Tape Fittings
- Punch and Hold Down Stakes

KDT1	Small Kit	\$89.95
KDT1-T	Kit plus timer	\$134.95

Medium Drip Tape Kit

Waters 20 100' rows (1/8 acre*)

- 2,000' of Drip Tape
- Filter and Pressure Regulator
- 100' of 1/2" Mainline Tubing
- 1/2" Mainline and Drip Tape Fittings
- Punch and Hold Down Stakes
- High Flow Hose Y**

KDT2	Medium Kit	\$295.95
KDT2-T	Kit plus timer	\$339.95

Large Drip Tape Kit

Waters 40 100' rows (1/4 acre*)

- 4,000' of Drip Tape
- Filter and Pressure Regulator
- 200' of 3/4" Mainline Tubing
- 3/4" Mainline and Drip Tape Fittings
- Punch and Hold Down Stakes
- High Flow Hose Y**

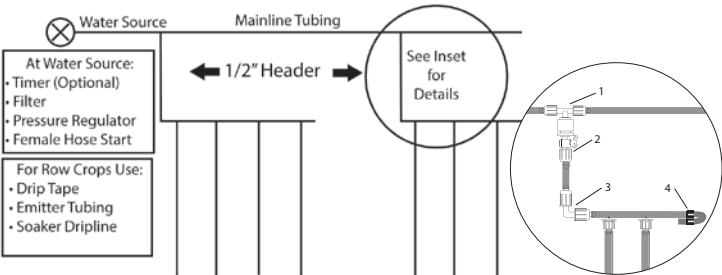
KDT3▲	Large Kit	\$469.95
KDT3-T▲	Kit plus timer	\$568.95

Drip Tape is low-flow, 15 mil, emitters spaced 8" OC.
* Acreage estimations based on 33" row spacing. Your situation may vary.
** High Flow Hose Y (HYVHPL, p. 22) is used to divide the system into two zones.
Note: Use a high-flow timer for the Medium and Large Drip Tape Kits.

▲⚠ Warning: Cancer and Reproductive Harm - [www.P65Warnings.ca.gov](#)

Dividing your irrigation system is easy!

An irrigation system can be divided into multiple, smaller sections (zones) using header lines.



Header package includes:

- Female Tee (to branch off your mainline)
- Male Adapter with Shutoff (to shut off the zone)
- 90° Elbow (to make a right angle turn)
- Figure Eight End (to seal off the end of the header)

Simply order a roll of 1/2" or 3/4" tubing (p. 7) to complete your headers!

KHA12	Header for 1/2" Mainline	\$7.95\$72.95/10
KHA34	Header for 3/4" Mainline	\$9.95\$89.95/10

Chat with us live at [DripWorks.com](#)

No need to search for parts. These kits are project-ready.

Garden Bed Kits

Simple setup for lush, thriving plants in any bed shape. Three kit sizes meet diverse needs. See [DripWorks.com](#) for a full parts list and more information about these kits.



Small Garden Bed Kit

Waters up to 3 Beds**

- 100' Soaker Dripline*
- 1/2" & 1/4" Fittings
- 50' of 1/4" Tubing
- Filter & PSI Regulator
- Punch & Hold Downs
- 50' of 1/2" Mainline Tubing

KGB1	Small Kit	\$69.95
KGB1-T	Kit plus Timer**	\$113.95

Medium Garden Bed Kit

Waters up to 9 Beds**

- 300' Soaker Dripline*
- 1/2" & 1/4" Fittings
- 100' of 1/4" Tubing
- Filter and PSI Regulator
- Punch & Hold Downs
- 100' of 1/2" Mainline Tubing

KGB2	Medium Kit	\$109.95
KGB2-T	Kit plus Timer***	\$154.95

Large Garden Bed Kit

Waters up to 18 Beds**

- 600' Soaker Dripline*
- 3/4" & 1/4" Fittings
- 200' of 1/4" Tubing
- Filter & PSI Regulator
- Punch & Hold Downs
- 250' of 3/4" Mainline Tubing

KGB3▲	Large Kit	\$249.95
KGB3-T▲	Kit plus Timer****	\$348.95

*Emitters Spaced 12" OC **Based on 4'x8' beds ***TGNLIDBT (p. 55) ****TGNHFBT (p. 54)
Note: We recommend a high-flow timer with Large Kit (p. 54)

DRIPTIPS

Why your drip system needs a timer!

When you're not there to turn the water on, or when you forget to turn it off and run up your water bill, a drip irrigation timer can be your best investment. A timer will turn your system on and off at designated times, so plants get the steady, consistent watering they need for optimum health and production.

▲⚠ Warning: Cancer and Reproductive Harm - [www.P65Warnings.ca.gov](#)

Questions? We're here to help. Call 800.522.3747

Deck & container plants get thirsty, too.



Rose and Shrub Kits
Ideal for bushes, shrubs, or small trees

Small Rose and Shrub Kit Waters up to 15 Roses

KRS1	Small Kit	\$64.95
KRS1-T	Kit plus Timer	\$109.95

Medium Rose and Shrub Kit Waters up to 30 Roses

KRS2	Medium Kit	\$94.95
KRS2-T	Kit plus Timer.....	\$139.95

[Find a complete list of kit components online at DripWorks.com/drip-irrigation/irrigation-kits/rose-shrub](#)



Individual Plant Kits
For any garden; just place emitters where needed.

Small Individual Plant Kit Waters up to 60 Plants

KIP1	Small Kit	\$74.95
KIP1-T	Kit plus Timer	\$119.95

Medium Individual Plant Kit Waters up to 140 Plants

KIP2	Medium Kit	\$119.95
KIP2-T	Kit plus Timer	\$164.95

[Find a complete list of kit components online at DripWorks.com/drip-irrigation/irrigation-kits/individual-plant](#)



Deck Garden Kits
Quick, easy setup frees you from hand watering planters and pots

Small Deck Garden Kit Waters up to 45 Pots

KDG1	Small Kit	\$79.95
KDG1-T	Kit plus Timer	\$124.95

Medium Deck Garden Kit Waters up to 180 Pots

KDG2	Medium Kit	\$169.95
KDG2-T	Kit plus Timer	\$209.95

[Find a complete list of kit components online at DripWorks.com/drip-irrigation/irrigation-kits/deck-garden](#)

Mainline Tubing: The heart of every drip irrigation system.

This flexible, low-density polyethylene tubing is the most common tubing for carrying water throughout a drip system. It is designed to have holes punched into it and emitters, transfer barbs, or sprayers inserted. Works in straight lines or curves.



This polyethylene tubing is not rated for constant pressure. Use Easy Loc, or barbed fittings (p. 9, 10, and 24). Handles up to 50 PSI.



½" Mainline Tubing (.600" ID-.700" OD)
Measures almost ¾" in diameter.
Recommended flow rate is 0-240 gallons per hour (GPH). *Not rated for constant pressure.*

1250	50' Roll	\$13.95
12100	100' Roll	\$18.95
12500	500' Roll	\$68.95
121000	1,000' Roll	\$129.95

¾" Mainline Tubing (.830" ID-.940" OD)
Measures almost 1" in diameter.
Recommended flow is 0-480 gallons per hour (GPH). *Not rated for constant pressure.*

3450	50' Roll	\$21.95
34100	100' Roll	\$31.95
34250	250' Roll	\$74.95
34500	500' Roll	\$112.95



Oval Hose™
Commercial systems use this hose mainly as a high-flow, low-pressure header for Drip Tape. Larger diameter polyethylene is extruded in an oval shape to save space for shipping. Not rated for constant pressure. Uses standard barbed fittings and hose clamps, or 1" Easy Loc fittings for 1" Oval Hose.

F1250	1" x 250'	42 PSI Max	13 GPM.....	\$98.95
F112150	1.5" x 150'	21 PSI Max	37 GPM.....	\$94.95
F112300	1.5" x 300'	21 PSI Max	37 GPM.....	\$184.95
F2150	2" x 150'	21 PSI Max	73 GPM.....	\$114.95

irritec Irrigating long rows or hilly terrain? You need this.



1/2" Pressure Compensating Emitter Tubing

The most versatile product for larger plantings!

- Greatly reduces installation time
- Perfect for hilly terrain and long rows
- 0.5 or 1.0 GPH pressure compensating emitters
- 600" ID x .700" OD (same size as our 1/2" mainline)
- Pressure range 10–50 PSI

1/2" Emitter Tubing Pricing

Part #	Emitter Spacing	Emitter Flow	Roll Size	Flow/100' @10-50 PSI	Max Row Length	Price
DET95	9"	0.5 GPH	100'	67 GPH	300'	\$39.95
DET95-500	9"	0.5 GPH	500'	67 GPH	300'	\$174.95
DET91	9"	1.0 GPH	100'	133 GPH	190'	\$39.95
DET91-500	9"	1.0 GPH	500'	133 GPH	190'	\$174.95
DET125	12"	0.5 GPH	100'	50 GPH	450'	\$34.95
DET125-500	12"	0.5 GPH	500'	50 GPH	450'	\$149.95
DET121	12"	1.0 GPH	100'	100 GPH	250'	\$34.95
DET121-500	12"	1.0 GPH	500'	100 GPH	250'	\$149.95
DET181	18"	1.0 GPH	100'	67 GPH	350'	\$32.95
DET181-500	18"	1.0 GPH	500'	67 GPH	350'	\$129.95
DET241	24"	1.0 GPH	100'	50 GPH	400'	\$29.95
DET241-500	24"	1.0 GPH	500'	50 GPH	400'	\$119.95
DET361	36"	1.0 GPH	100'	33 GPH	550'	\$24.95
DET361-500	36"	1.0 GPH	500'	33 GPH	550'	\$109.95

Soil Type	Annuals, Ground Covers, Gardens		Large Bushes/Shrub Beds Perennials	
	Row Spacing	Emitter Spacing	Row Spacing	Emitter Spacing
Medium Sand	9" to 12"	9" or 12"	Spacing 15" to 18"	12"
Loam	12" to 18"	12" or 18"	Spacing 18" to 24"	18"
Clay Loam	18" to 24"	18"	Spacing 20" to 30"	18"
Clay	*Reduce to 15"	18"	Spacing 24" to 36"	24"

Easy Loc Fittings are easy to install and reuse.



1/2" Easy Loc Fittings

Compatible with 1/2" drip tubing .680"–.720" OD. These fittings are compatible with our 1/2" Mainline and 1/2" Pressure Compensating Emitter Tubing.

1/2" Female Hose Start with Swivel

Use to attach mainline tubing to a faucet, hose end or the male hose threads of a filter or adapter. The most common way to start a system.

ELFH Female Hose Start \$1.29



ELFH

1/2" Coupler

For joining two pieces of mainline tubing. A necessary repair part. Always have a few on hand.

ELC Coupler.....\$0.79



ELC

1/2" Tee

Use to branch off mainline tubing.

ELT Easy Loc Tee \$1.79



ELT

1/2" Elbow (90° bend)

Use to go around a corner that might kink the mainline tubing.

ELL Easy Loc Elbow..... \$1.39



ELL

1/2" Male Hose End with Cap

Used to end a line. The screw-off cap makes it easy to flush lines.

ELMC Male Hose End w/Cap..... \$0.95



ELMC

1/2" Male Hose End

If you want to flush your lines after each watering, use with a flush valve (VFH, p. 43).

ELMH Male Hose End.....\$0.79



ELMH

1/2" x 1/4" Barb

Create a 1/2" branch line without using a Tee with this 1/2" x 1/4" fitting. Flow through is approximately 80 GPH.

Not for use with 1/4" tubing.

EL14B Easy Loc x 1/4" Barb\$1.29



EL14B



1/2" Valve

A full port inline valve with an easy-to-grip handle.

ELV12 Easy Loc Valve..... \$1.95



ELV12

1/2" Female Hose Tee with Swivel

An easy way to attach two mainlines to one hose connection.

ELFT Female Hose Tee..... \$1.95



ELFT

1/2" Female Hose Elbow with Swivel

For situations where there is no room to use a straight fitting to start a system.

ELFL Female Hose Elbow..... \$1.59



ELFL

3/4" Female Pipe Threads (No swivel)

Use to attach 1/2" mainline tubing to a 3/4" Y filter (Amiad or Arkal) or any 3/4" male pipe thread.

EL34F▲ Female Pipe Thread\$1.95



EL34F

1/2" Cross

A 4-way fitting for 1/2" mainline tubing. Does the work of two tees.

ELX▲ Cross Fitting..... \$2.95



ELX

1/2" Tubing Diameter

Use this circle to judge the size of your 1/2" tubing. Cut a 1" piece and hold it over the circle to be sure our fittings will fit your tubing.

⚠ Warning: Cancer and Reproductive Harm - www.P65Warnings.ca.gov



Our versatile fittings can be hand-tightened.

3/4" Easy Loc Fittings

Compatible with 3/4" drip tubing .880"–.970" OD.

3/4" Female Hose Start with Swivel

ELFH34 Female Hose Start \$2.79



1/2" x 1/2" x 3/4" Reducing Tee

Use to branch a 3/4" line off a 1/2" line.

ELRT12 Reducing Tee.....\$2.49



3/4" Coupler

ELC34 Coupler..... \$2.29



3/4" Tee

ELT34 Tee \$4.79



3/4" Elbow (90° bend)

ELL34 Elbow \$3.49



3/4" Male Hose End with Cap

ELMC34 Male Hose End with Cap..... \$1.89



3/4" Easy Loc Valve

ELSO34 Easy Loc Valve..... \$3.79



3/4" Male Hose End

ELMH34 Male Hose End..... \$1.29



3/4" x 1/2" Reducing Coupler

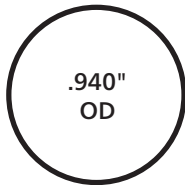
ELRC Reducing Coupler \$2.39



3/4" x 3/4" x 1/2" Reducing Tee

Use this to branch a 1/2" line off a 3/4" line.

ELRT Reducing Tee..... \$4.89



3/4" Tubing Diameter

Use this circle to judge the size of your 3/4" tubing. Cut a 1" piece and hold it over the circle to be sure our fittings will fit your tubing.



More products available online at DripWorks.com



A fitting for every purpose. That's Easy Loc.

1" Easy Loc Fittings

Compatible with 1" Oval Hose (p. 7) 1.025"ID–1.085" OD

1" Female Hose Start with Swivel

ELFH1 Female Hose Start with Swivel \$4.89



1" Coupler

ELC1 Coupler (necessary repair part) \$2.49



1" Tee

ELT1▲ Tee \$5.95



1" Elbow (90° bend)

ELL1▲ Elbow (90° bend) \$4.29



1" Male Hose End with Cap

ELMC1 Male Hose End with Cap..... \$2.19



1" Male Pipe End

EL1MP1 1" Male Pipe End \$1.69



1" Socket

EL1SOC 1" Socket \$1.69 (glues over 1" PVC pipe or into 1 1/4" PVC fitting)



1" Spigot

EL1SPIG1 1" Spigot \$1.69 (glues over 3/4" PVC pipe or into 1" PVC fitting)



1" x 3/4" Reducing Coupler

ELRC134 1" x 3/4" Reducing Coupler..... \$2.59



1" x 1/2" Reducing Tee

ELRT112 1" x 1/2" Reducing Tee \$5.95



1" x 3/4" Reducing

ELRT134▲ 1" x 3/4" Reducing Tee \$6.29

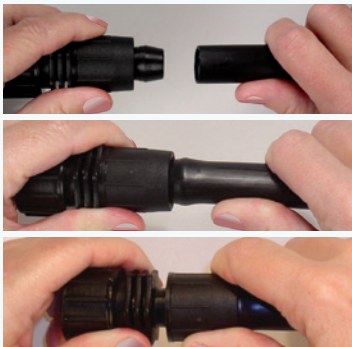


▲⚠ Warning: Cancer and Reproductive Harm - www.P65Warnings.ca.gov

DRIP TIPS

How to Use Easy Loc Fittings

Start by turning the collar on the Easy Loc fitting counter-clockwise until it tightens up to the body of the fitting. Slide the tubing over the barb as far as it will go toward the body of the fitting. Hot soapy water may be used to soften and lubricate the tubing. Once the tubing is in position, turn the collar clockwise until it is tight. Hand-tighten; use pliers to secure if necessary.



Questions? We're here to help. Call 800.522.3747



Discover the grower's choice in drip systems.

Aqua-Traxx®
with the **PBX Advantage**



Aqua-Traxx Drip Tape

Aqua-Traxx is perfect for row crops and raised beds. It offers a Proportionally Balanced Cross-Section (PBX) design that provides uniform distribution and reduces clogging.

- Low-cost, effective watering for row crops and raised beds
- Superb watering efficiency and uniformity
- Ideal for above ground, mulched or buried applications
- Great for low-pressure systems, works down to 4 PSI
- Requires only 155 mesh filtration (filters, p.18,19, and 20)
- Use with drip tape fittings (p. 13)
- Low operating pressures, see chart below (regulators, p. 21)
- Typically lasts up to 7 years if covered, and 2–5 years on surface

Part #	Mil	Emitter Spacing	Flow Type*	Flow per 100' @ 8 PSI	Roll Length	Max Row Length	Price Each
15 Mil-Maximum Pressure 15 PSI							
TA1508HSR	15	8" OC	High	40 GPH	1,000'	200'	\$109.95
TA1508LSR	15	8" OC	Low	20 GPH	1,000'	380'	\$109.95
TA1508H	15	8" OC	High	40 GPH	4,000'	200'	\$289.95
TA1508L	15	8" OC	Low	20 GPH	4,000'	380'	\$289.95
TA1512H	15	12" OC	High	27 GPH	4,000'	280'	\$294.95
TA1512L	15	12" OC	Low	13 GPH	4,000'	550'	\$294.95
8 Mil-Maximum Pressure 15 PSI							
TA804SR	8	4" OC	Med	60 GPH	2,000'	140'	\$119.95
TA804	8	4" OC	Med	60 GPH	7,500'	140'	\$289.95
TA808H	8	8" OC	High	40 GPH	7,500'	200'	\$294.95
TA808L	8	8" OC	Low	20 GPH	7,500'	380'	\$294.95
6 Mil-Maximum Pressure 12 PSI							
TA606	6	6" OC	Low	27 GPH	10,000'	280'	\$319.95

The perfect drip tape for smaller row crops or beds.

Packaged in a convenient, easy-to-store dispenser. The precision-designed flow path reduces clogging and the slit outlet prevents back suction of soil. To create a tight seal, be sure tape is warm and pliable before attaching the 5/8" start fittings (LSB/LSBSO) and end fittings (LSGS/LSPLUG).

- Superior clog resistance
- Works above ground, mulched or buried
- Use with 5/8" tape fittings
- Lasts years; lifespan considerably increased if tape is covered

DripWorks Drip Tape 100 foot rolls of drip tape in convenient flat boxes.		
TDE804100	8 mil, 4" OC, Medium Flow	\$18.95
TDE1508L100	15 mil, 8" OC, Low Flow	\$18.95
TDE1508H100	15 mil, 8" OC, High Flow	\$18.95



More products available online at DripWorks.com

Don't forget to add the right fittings...

Common 5/8" Tape Fittings

These easy-to-install, reusable fittings work with most brands of drip tape.



LSB



LSBSO



LSC



LSPLUG



LSCSO



LSV12M



LST

Tape x 1/4" Barb

For attaching tape to mainline tubing. Simply punch a 1/4" hole in the mainline tubing, connect the tape to the tape fitting end and insert the barbed end into the punched hole. Allows a flow of approx. 80 GPH at 10 PSI.

LSB Tape x 1/4" Barb \$0.59

Tape x 1/4" Barb with Valve

For shutting off individual lines. The 1/4" barb's flow is approx. 80 GPH at 10 PSI.

LSBSO Tape x 1/4" Barb w/Valve \$2.29

Tape Coupler

For joining two sections of tape or repairing a line.

LSC Tape Coupler..... \$0.89

Tape End Plug

This fitting is used to seal a row of tape. A loop on the end provides a sure grip for easy handling.

LSPLUG Tape End Plug \$0.49

Tape Coupler with Valve

LSCSO Tape Coupler with Valve..... \$2.29

Tape x 1/2" Male Pipe Thread with Valve

LSV12M Tape x 1/2" MPT w/ Valve \$2.29

Tape Tee

LST Tape Tee..... \$2.19

Tape Grip Sleeve End

LSGS \$3.95/10

Tape x PVC Adapter

For running tape directly off a PVC header. Glues onto 1/2" PVC pipe or into a 3/4" PVC fitting.

LSSOC Tape x PVC Adapter..... \$0.95

Tape x 1/2" Male Pipe Threads

When teeing off PVC or large poly pipe, use this for a high-flow, removable row beginning. Ideal for long runs.

LS12M Tape x 1/2" MPT..... \$0.89

Tape x Male Hose Thread

LSM Tape x Male Hose Thread..... \$0.79

Tape Elbow

For making sharp turns in a garden. Tape will not go around a 90° corner.

LSL Tape Elbow..... \$1.89

Tape x Male Hose End with Cap

This fitting is used to end a line. The screw-off cap makes it easy to flush lines.

LSMC Tape x Male Hose End with Cap.... \$1.19

Tape x Female Hose Swivel

For attaching tape to a hose or hose bib or any other male hose threads.

LSF Tape x Female Hose Swivel \$1.69

Tape x Easy Loc

For attaching tape to the end of 1/2" mainline tubing.

LSELC Tape x Easy Loc..... \$1.49



LSGS



LSSOC



LS12M



LSM



LSL



LSMC



LSF



LSELC

DRIPTIPS

How to Use Tape Fittings

- Cut the end of the tape at a right angle.
- Turn the locking ring counter-clockwise until it seats against the body of the fitting.
- Slip the tape completely over the large barbed end.
- Twist the locking ring clockwise until tight. Use pliers if necessary.
- Give the tape a firm tug to make sure it is securely attached.

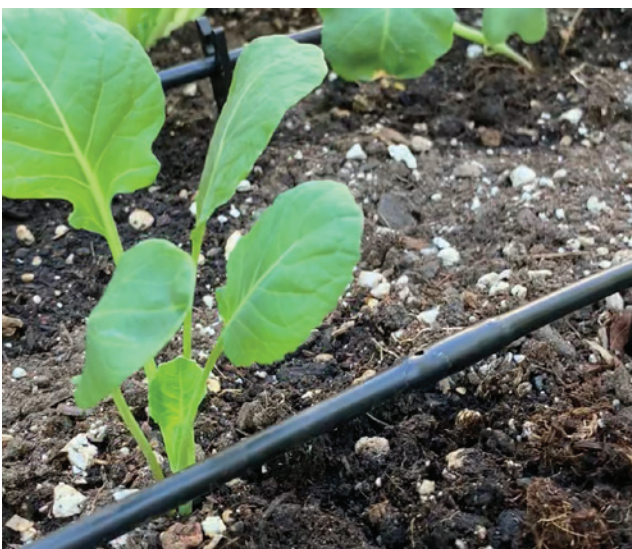
Hint:

Dip the end of the tape in a thermos of hot water to make it more pliable and help it seal.

First attach the tape to the large end of the 1/4" barb (LSB) and lock it in place. Then punch hole in the mainline and insert smaller barb.

Questions? We're here to help. Call 800.522.3747

Get down to basics with a simple, versatile soaker dripline.



1/4" Soaker Dripline

Ideal for small and medium garden beds or containers

- Flexible, easy to use
- Emitters pre-installed every 6", 9", or 12"
- Great for gravity-fed systems, garden beds, containers, and border gardens
- Maximum operating pressure 30 PSI
- Works down to 2 PSI
- Uses standard 1/4" fittings (p.15)

1/4" Soaker Dripline Pricing

Part #	Spacing	Price
DSD6L	6" Spacing/50' roll	\$14.95
DSD6	6" Spacing/100' roll	\$21.95
DSD6500	6" Spacing/500' roll	\$102.95
DSD9	9" Spacing/100' roll	\$19.95
DSD9500	9" Spacing/500' roll	\$84.95
DSD12	12" Spacing/100' roll	\$14.95
DSD12500	12" Spacing/500' roll	\$71.95

Soaker Dripline Flow per 100'

Spacing	Max Row Length	Flow (GPH)		
		10 PSI	20 PSI	30 PSI
6"	18'	84	120	160
9"	25'	56	80	107
12"	34'	42	60	80
Flow per emitter:		0.42	0.60	0.80

Note: To ensure even flow, we recommend using a regulator with Soaker Dripline. See p. 21 for our 10–30 PSI regulators.

To prevent runoff on clay soils, reduce row spacing and water more frequently for shorter durations.

Miracle Insert Tool

A "must" for Landscapers! Saves time and prevents sore hands when inserting goof plugs or transfer barbs into 1/4" tubing or Soaker Dripline. Not a punch.

PUINS Miracle Insert Tool.....\$17.95



Online Video!

Every drip irrigation system needs these essentials.

Common 1/4" Micro-Fittings

These fittings are used with DripWorks standard 1/4" micro-tubing. They are most frequently inserted into 1/2" or 3/4" blank tubing using one of our punches (p. 16).

Micro-Flow Valves

Make any mini-sprinkler or sprayer adjustable. Also use in place of transfer barbs to control the flow to individual plants. Use barbed valve with 1/4" tubing and Soaker Dripline; threaded valve with Rigid Risers. One of our favorite 1/4" fittings.

14VHV-5	Barbed Valve	\$3.49/5
14VHV-20	Barbed Valve	\$12.95/20
14VHV-50	Barbed Valve	\$29.95/50
14VFVT-5	Threaded Valve.....	\$3.49/5
14VFVT-50	Threaded Valve.....	\$29.95/50

Female Hose Thread x 1/4" Fittings

Use these fittings to connect a single line of 1/4" poly tubing to the male hose threads on a faucet, filter, timer or hose.

H14CP	1/4" Compression w/Screen Washer.....	\$1.95
H14BSFW	1/4" Barb with Screen Washer	\$1.39
H14BS	1/4" Barb without Screen Washer	\$0.59

*Select H14BSFW or H14BS for use with vinyl tubing

Tidy Bow Elbow Clip

A simple, leak-proof way of redirecting and securing micro-tubing. Create a 90° degree turn with ease!

14TIDY-10	\$2.95/10
14TIDY-50	\$11.95/50

Goof Plugs

Goof Plugs are used as an end for 1/4" tubing and 1/4" soaker Dripline (p.14). These plugs are a must if you punch a hole in the wrong place or need to remove an emitter from your mainline tubing.

Two-Way Goof Plugs *Most popular!*

A plug with two different-sized barbs used to repair small or large holes in mainline tubing.

14GP2-10	2-Way Goof Plug	\$0.60/10
14GP2-100	2-Way Goof Plug	\$4.95/100

One-Way Goof Plugs

The same size plug as the small end of the 2-way Goof Plug. For patching a hole where a 1/8" or 1/4" barb was removed. Sits flat on the mainline tubing.

14GP1-10	1-Way Goof Plug	\$0.79/10
14GP1-100	1-Way Goof Plug.....	\$5.95/100



Transfer Barb

Our most common connector for attaching 1/4" tubing to mainline (1/2" or 3/4") tubing. Also acts as a coupler for joining two pieces of 1/4" tubing.

14TB-10	\$1.49/10
14TB-50	\$6.95/50



Long Transfer Barb

A long body and tapered ends make this 1/4" transfer barb easier to handle than the short barb.

14LTB-10	\$1.49/10
14LTB-50	\$6.29/50



Elbow

Use anywhere you need tubing to turn a 90° angle.

1490-10	\$1.95/10
1490-50	\$7.95/50



Tee

For branching off 1/4" tubing.

14T-10	\$1.95/10
14T-50	\$7.95/50



Cross

A four-way fitting for 1/4" tubing.

14X-10	\$3.95/10
14X-50	\$17.95/50



Bug Plug

When using 1/4" tubing on the outlet side of emitters, a Bug Plug at the end allows water to flow out but keeps bugs from getting in and clogging lines. Not for regulating flow!

14BUG	\$0.99/10	\$9.95/100
-------	-----------------	------------



1/4" Quick Disconnect Fittings

Change out any 1/4" (.250" OD) line without cutting.

14QCCP	1/4" Coupler	\$2.49/each	\$23.95/10
14QCT	1/4" Tee	\$3.29/each.....	\$29.95/10



1/8" Micro Fittings

For installing Spot Spitters (p. 31). Use a length of 1/8" tubing and a 1/8" transfer barb (18TB) or a reducing transfer barb (14RTB) to connect the emitter to the mainline tubing.

18TB-10	1/8" Transfer Barb	\$1.49/10
18TB-50	1/8" Transfer Barb	\$6.49/50
14RTB-10	1/4" x 1/8" Transfer Barb	\$2.39/10
14RTB-50	1/4" x 1/8" Transfer Barb	\$9.95/50
18T-10	1/8" Tee	\$1.95/10
18T-50	1/8" Tee	\$8.95/50

Choose your tubing based on flow capacity needs.

Micro-tubing is used as a branch line. Use it to reach nearby plants with emitters, sprayers, and sprinklers.

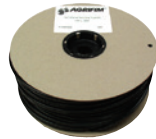
1/4" Micro-Tubing

Use in combination with 1/4" fittings, mini-sprinklers or a mister on a stake to reach distant plants. Simply insert fittings and emitters into the end – no clamps needed.

1/4" Polyethylene

(.170" ID-.250" OD) This is the standard 1/4" tubing used with most emitters, mini-sprinklers and sprayers. Flow 30 GPH 30 PSI Max.

1450	50' Roll	\$4.95
14100	100' Roll	\$6.95
14500	500' Roll	\$29.95
141000	1,000' Roll	\$49.95



1/4" White Polyethylene

(.170" ID-.250" OD) Works great with light-colored trim, posts or when going up light-colored walls. Flow 30 GPH 45 PSI Max.

1450WV	50' Roll	\$8.95
--------	----------	--------



1/4" Vinyl

(.160" ID-.220" OD) Softer and more flexible than polyethylene. Do not use at high pressure Flow 30 GPH 30 PSI Max.

14100V	100' Roll	\$7.95
14500V	500' Roll	\$29.95
141000V	1,000' Roll	\$49.95



1/8" Polyethylene Tubing

(.125" ID-.187" OD) Use with Spot Spitters (p. 31) Flow 15 GPH 30 PSI Max

18100	100' Roll	\$4.95
18500	500' Roll	\$24.95
181000	1,000' Roll	\$37.95



Create holes quickly and easily with punches.

Miracle Punch:

"The Ultimate Punch"

This punch works like a staple gun. Slip the 1/2" or 3/4" tubing completely into the channel and squeeze the handle. Makes a big job much easier. Popular with landscapers and commercial growers.

PUM	Regular 1/4" Punch	\$14.95
PUMK	Large Hole Punch*	\$14.95

*For larger emitters such as Vibra-Clean (p. 27)

Replacement tips available online!



Punch N' Cut

Multi-purpose tool will punch a 1/4" hole. Use with any size polyethylene mainline. Cutting tool will cut mainline tubing and PVC schedule 40 up to 1". One tool does it all.

PUPCUT	Multi-purpose tool	\$15.95
--------	--------------------	---------



Pocket Punch

Will easily punch holes for 1/4" fittings or emitters into 1/2" mainline tubing. Has a holder to help when installing transfer barbs or certain emitters.

PUPKT	Pocket Punch	\$8.95
-------	--------------	--------



Yellow Handle Punch

Use for 1/4" fittings and Tape x 1/4" barb fittings (LSB or LSBOS, p. 13). The other end has a nut driver for inserting Mini-Jets (see p. 31).

PUY	Yellow Handle Punch	\$6.95
-----	---------------------	--------



Wood Handle Punch

Use for 1/8" or 1/4" fittings.

PUW	Wood Handle Punch	\$2.95
-----	-------------------	--------



Tubing Cutter by Hydro-Rain

This tool is for cutting polyethylene tubing up to 1 1/4". Its sharp blade can also cut rubber and plastic pipe!

POLYCUT▲		\$15.95
----------	--	---------



Adjustable Punch

The adjustable tubing guide will accept 1/2", 3/4" polyethylene tubing and 1" or 1 1/2" Oval Hose. The stock tip included is the "large tip" (PUADJTLG) for making holes slightly larger than the standard 1/4" size (LSB, LSBOS, and EL14B fittings). A standard 1/4" tip (PUADJTSM) is also available at DripWorks.com.

PUADJ	Adjustable Punch	\$22.95
-------	------------------	---------



Note: Adjustable Punch tool may vary in color.

Hold that line: Don't forget the stakes & clamps.



EZ Stake – Top Seller!

A clip stake with 3' of heavy-wall vinyl 1/4" tubing and transfer barb attached. Just add a sprayer or mister.

STEZ13	13" EZ Stake	\$5.95/5	\$89.95/100
SEZ17	17" EZ Stake	\$7.95/5	\$119.95/100

Clip Stake – Clip holds Rigid Risers or 1/4" tubing.

ST13	13" Clip Stake	\$2.95/5	S17 17" Clip Stake	\$6.95/5
------	----------------	----------	--------------------	----------

Straight Stake

Slender, streamlined stake has a groove to hold 1/4" polyethylene tubing or a Rigid Riser. *Not compatible with our 1/4" vinyl tubing.*

SA8-5	8" Straight Stake	\$2.69/5
SA12-5	12" Straight Stake	\$3.29/5
SA16-5	16" Straight Stake	\$6.95/5
SA21-5	21" Straight Stake	\$7.95/5

Riser Elbow and Angle Stakes

Use a length of Rigid Riser or 1/4" tubing (up to 2") to connect a mister or sprayer to the top of stakes. Attach to mainline with 1/4" tubing and transfer barb. The 7" stake (SV) has an adjustable control valve.

SV	7" Elbow Stake w/ Valve.....	\$4.25/5.....	\$69.00/100
STEL-5	8" Angle Stake		\$3.49/5
STEL-50	8" Angle Stake		\$29.95/50

Rigid Riser

A rigid, thick-walled 1/4" tube for elevating sprayers or mini-sprinklers. Cut to desired length with pruners or a knife. Support with stabilizer, straight or clip stakes. Use with threaded fittings.

SR12	12" Rigid Riser	\$0.85/5	\$14.95/100
SR18	18" Rigid Riser	\$1.30/5	\$24.50/100

Stabilizer Stake

Metal stake with loop at top for supporting Rigid Risers

SS14	14" Stabilizer Stake	\$2.95/5	\$45.00/100
------	----------------------	----------	-------------

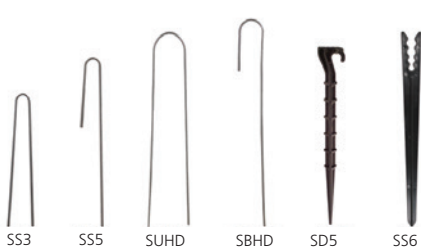
Threaded Connectors

Thread by barb connector. Used to connect Rigid Risers to mainline or 1/4" tubing. Can be used to connect 1/4" tubing to PVC. (1 1/2 thread)

14WTBC-10	Threaded X Barb Connector	\$1.95/10
14WTBC-50	Threaded X Barb Connector	\$7.49/50

Threaded Connector Thread into mainline tubing to keep short Rigid Risers in an upright position. (1 1/2 thread)

14WTTB-10	Threaded Connector	\$1.69/10
14WTTB-50	Threaded Connector	\$7.49/50



3" Hold Down

A U-shaped stake to keep 1/4" tubing and emitters in place.

SS3-10	3" Hold Down	\$1.49/10
SS3-100	3" Hold Down	\$10.95/100

5" Hold Down

A J-shaped stake to keep emitters and 1/4" tubing in place.

SS5-10	5" Hold Down	\$1.49/10
SS5-100	5" Hold Down	\$10.95/100

U-Shaped Wire Hold Downs

Stronger than the SBHD, these 6" galvanized hold downs work well in light or heavy soils. For 1/2" and 3/4" tubing.

SUHD-10	U-Shaped Wire Hold Downs	\$1.49/10
SUHD-100	U-Shaped Wire Hold Downs	\$11.95/100

J-Shaped Wire Hold Downs

For 1/2" mainline or drip tape, these 7" stakes are easy to use.

SBHD-10	J-Shaped Wire Hold Downs	\$1.49/10
SBHD-100	J-Shaped Wire Hold Downs	\$11.95/100

5 1/2" Support Stake

A sturdy hold down for 1/4" tubing. Can be hammered into the ground.

SD5	5 1/2" Support Stake	\$1.95/10	\$14.95/100
-----	----------------------	-----------	-------------

6" Support Stake

For 1/4" and 1/8" tubing. Stakes elevate and hold micro-tubing, keep bugs and dirt out of tubing and raise emitters for easy inspection.

SS6-10	6" Support Stake	\$2.49/10
SS6-50	6" Support Stake	\$9.95/50

Support Clamps With Nails

Plastic clamps with stainless steel nails for attaching 1/4" or 1/2" tubing to wood surfaces.

S14SC-10	Clamps for 1/4" Tubing	\$1.69/10
S14SC-50	Clamps for 1/4" Tubing	\$6.95/50
S12SC-10	Clamps for 1/2" Tubing	\$3.69/10
S12SC-50	Clamps for 1/2" Tubing	\$14.95/50

Trellis Hangers

UV-resistant plastic hangers used to suspend 1/2" or 3/4" tubing on trellis wire. Used in vineyards, orchards, and greenhouses.

STRE	1/2" Trellis Hangers	\$1.20/10	\$11.00/100
STRE34	3/4" Trellis Hangers	\$3.90/10	\$29.00/100

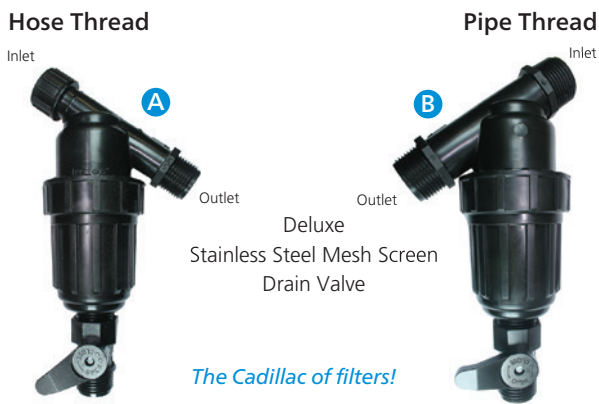


Warning: Cancer and Reproductive Harm - www.P65Warnings.ca.gov

More punches and tips at DripWorks.com

irritec

Keep the flow going with dependable filters.



Irritec Hose Thread Y Filters [see product A](#)

With Stainless Steel Screen and Drain Valve. These filters should be installed after timers or valves. They cannot be left under constant pressure. Maximum pressure is 120 PSI. To clean, simply unscrew bottom canister and remove the screen. FHT swivel inlet x MHT outlet.

FYCH	155 Mesh	13 GPM	\$13.95
FYCH200	200 Mesh	13 GPM	\$13.95

Male Pipe Thread Y Filter [see product B](#)

With Stainless Steel Screen and Drain Valve.

FYCP34155	¾" MPT	155 Mesh	13 GPM	\$12.95
FYCP34200	¾" MPT	200 Mesh	13 GPM	\$12.95
FYCP1155	1" MPT	155 Mesh	13 GPM	\$12.95
FYCP1200	1" MPT	200 Mesh	13 GPM	\$12.95

DRIPTIPS

How to Select a Filter

Filters are protection against sediment and other particles large enough to affect the performance of a drip system. A filter should be selected according to the quality of the water source and the flow rate (gallons per minute) of the irrigation system. The higher the mesh number of the screen or disc set, the finer the filtration. Most drip systems require only 120–150 mesh, while misters require a 200 mesh filtration.

- Home Garden Screen Filters are perfect for small to medium-size irrigation systems with a fairly clean water supply. They have a screen that captures sediment and debris present in the water supply.
- Heavy Duty Screen Filters have reinforced bodies and o-rings allowing them to be used under constant pressure. These are ideal for removing sediment and debris in irrigation systems with multiple zones, as they can be placed before a manifold.
- Disc Filters are commonly used to filter water from creeks, ponds, reservoirs, water catchment tanks and other sources that contain algae.
- Sand Media Filters are designed to remove organic material from large irrigation systems or swimming pools. The level of filtration depends on the sand used in the filter.

We only warranty systems that use a proper filter.

Filter/Pressure Regulator Combo

This combination filter/pressure regulator has a ½" FPT inlet, allowing it to be installed onto a ½" MPT riser, and comes with 2 female hose starts. The cap on the unit can be removed for a second outlet and ½" poly tubing can be run off both sides. 5 GPM flow rate. Max inlet pressure 60 PSI. Not rated for constant pressure.

FPR17	150 Mesh Filter/30 PSI Regulator Combo	\$29.95
-------	--	-------	---------

Tee Filter

Use for smaller systems with clean water (9 GPM or less, up to 80 PSI). FHT swivel inlet x MHT outlet. To clean the stainless steel screen, just remove the hose cap and pull it out.

FT	150 Mesh Tee Filter	\$9.95
FTE	150 Mesh Replacement Screen (Black)	\$6.95
FT200	200 Mesh Tee Filter	\$10.95
FTE200	200 Mesh Replacement Screen (Red)	\$7.95

Filtration Comparison Chart

Mesh	Micron	Sand #
50	280	N/A
100	152	11
150	104	16
200	73	20

There are two common terms used to rate filtering capability. The first is MESH, the number of wires per inch. The second is MICRON, the maximum particle size that can pass through. As mesh size increases, micron size decreases. Media filters require different sized sand for different applications.



Say "so long" to debris and sediment.



Amiad has a reputation for making some of the best-engineered filters in the world. All have stainless steel screens and male pipe threads (MPT) on the inlet and outlet, and can handle the constant (static) pressure of being installed before automated timers and valves. Great for debris and sediment.

Standard Amiad Filters

Heavily reinforced frame handles pressures to 140 PSI.

Part #	Filter Size (MPT)	Mesh	GPM	Filter Area Sq. In.	Price
FAM34	¾"	155	13	17	\$28.95
FAM34200	¾"	200	13	17	\$28.95
FAM1	1"	155	30	26	\$69.95
FAM1200	1"	200	30	26	\$69.95
FAM112	1½"	155	66	26	\$94.95
FAM112200	1½"	200	66	26	\$94.95
FAM112SU	1½"	155	66	52	\$139.95
FAM112SU2	1½"	200	66	52	\$139.95

Note: Amiad Standard 1" and 1 ½" use the same size screens.

Amiad Tagline Filters

Lower-cost alternative can handle pressures to 110 PSI.

Part #	Filter Size (MPT)	Mesh	GPM	Filter Area Sq. In.	Price
FAMCP34	¾"	155	13	17	\$19.95
FAMCP34200	¾"	200	13	17	\$19.95
FAMCP1	1"	200	22	17	\$25.95
FAMCP112	1½"	155	66	52	\$84.95
FAMCP112200	1½"	200	66	52	\$84.95
FAMCP2155	2"	155	110	72	\$179.95
FAMCP2200	2"	200	110	72	\$179.95

Note: ¾" and 1" Amiad Tagline Filters both use ¾" Amiad Screens. 1½" Amiad Tagline Filters use 1½" Amiad Super Screens.



Amiad® 2" Super "T"

Constant pressure filters with a double-size screen (108 sq. in.) for twice the filtering area.

Max Flow:	110 GPM
Max Pressure:	145 PSI
FAM2ST155	155 Mesh \$329.95
FAM2ST200	200 Mesh \$349.95

	155 Mesh (Yellow)
	200 Mesh (Black)



Amiad Replacement Screens

Part #	Filter Size (MPT)	Mesh	Color	Filter Area Sq. In.	Price
FAME34155	¾"	155	Yellow	17	\$19.95
FAME34200	¾"	200	Black	17	\$19.95
FAME1155	1" or 1½"	155	Yellow	26	\$49.95
FAME1200	1" or 1½"	200	Black	26	\$49.95
FAME112155S	1½" Super	155	Yellow	52	\$79.95
FAME112200S	1½" Super	200	Black	52	\$79.95
FAME2S155	2" Super T	155	Yellow	108	\$208.95
FAME2S200	2" Super T	200	Black	108	\$245.95

Note: Amiad Standard 1" and 1 ½" use the same size screens.

Achieve constant pressure even with algae-prone water.

Arkal Disc Filters

One of the finest disc filters on the market. If you have organic matter such as algae in your water supply (pond, creek, lake, river), this is the answer! The stacked discs in the Arkal filter are more durable and easier to clean than screens or cartridges. Discs must be removed from the filter body for cleaning. Maximum pressure is 140 PSI. Not for sediment. *The ¾" Arkal is not available in 200 Mesh.*



Arkal Disc Filters

Part #	Filter Size (MPT)	Mesh	GPM	Filter Area Sq. In.	Price
FA34	¾"	140	12	24.8	\$29.95
FA1	1"	140	26	48.9	\$89.95
FA1200	1"	200	26	48.9	\$89.95
FA112140	1½"	140	35	48.9	\$139.95
FA112200	1½"	200	35	48.9	\$139.95

Arkal Replacement Disc Sets

Part #	Filter Size (MPT)	Mesh	Color	Filter Area Sq. In.	Price
FAE34140	¾"	140	Black	24.8	\$21.95
FAE1140	1"	140	Black	48.9	\$47.95
FAE1200	1"	200	Green	48.9	\$47.95
<i>Note: 1" and 1½" Arkal filters use the same size disc set.</i>					

Arkal 2" Dual Lite Disc Filters

This filter is substantially larger than any of our other screen or disc filters. The filtering area is almost twice as large as the Arkal 1½" filter. Not for sediment.
Max Pressure: 116 PSI
Length: 16 5/16" Width: 10¼"
Weight: 6.6 lb.
Distance between inlet and outlet: 10¼"



Arkal 2" Dual Lite Disc Filters

Part #	Filter Size (MPT)	Mesh	GPM	Filter Area Sq. In.	Price
FADL2140	2"	140	110	147	\$269.95
FADL2200	2"	200	110	147	\$269.95

Arkal Replacement Dual Lite Disc Sets

Part #	Filter Size (MPT)	Mesh	GPM	Filter Area Sq. In.	Price
FAEDL140	2"	140	Black	147	\$179.95
FAEDL200	2"	200	Green	147	\$179.95

Arkal Super Disc Filters

Designed for larger drip systems or where the water has more algae or other organic debris. The disc set is almost twice the size of a standard Arkal filter, providing a much larger filtering capacity and a higher flow. Maximum pressure 140 PSI. Not for sediment.



Arkal Super Disc Filters

Part #	Filter Size (MPT)	Mesh	GPM	Filter Area Sq. In.	Price
FA1140SUP	1"	140	35	86.5	\$134.95
FA1200SUP	1"	200	35	86.5	\$134.95
FA112140SU	1½"	140	52	86.5	\$185.95
FA112200SU	1½"	200	52	86.5	\$185.95

Arkal Replacement Super Disc Sets

Part #	Filter Size (MPT)	Mesh	Color	Filter Area Sq. In.	Price
FAE1140SU	1" or 1½"	140	Black	86.5	\$69.95
FAE1200SU	1" or 1½"	200	Green	86.5	\$69.95
<i>Note: 1" or 1½" Arkal filters use the same size disc set.</i>					

Media (Sand) Filters

Sand filters remove organic debris from water in creeks or irrigation ditches. The tank's design keeps the sand bed level for even water flow and efficient filtration. When debris builds up on the sand, simply switch to the manual backwash cycle for easy cleaning.

Note: Use #11 silica sand for normal applications and #20 for products requiring a 200 mesh filter. Sand is available at many building supply stores.

- Maximum operating pressure 50 PSI
- 1½" FPT inlets and outlets
- Minimum backwash flow: 17 GPM
- Sight glass, pressure gauge and air bleed valve are standard
- Non-corroding, seamless fiberglass tank
- 1-year tank warranty



Note: Not rated for constant pressure

Media (Sand) Filter

Sand: 175 lb.
Max Flow: 40 GPM
Tank diameter: 19½" Height: 47"
Filtering Area:1.8 sq. ft. (259 sq. in.)
FMED40..... \$439.95

Media (Sand) Filter

Sand: 225 lb.
Max Flow: 50 GPM
Tank diameter: 21½" Height: 51½"
Filtering Area: 2.3 sq. ft. (331 sq. in.)
FMED50..... \$479.95

Our most reliable water pressure regulators.



Low Flow (0.5 to 8 GPM)

Hose Thread x Hose Thread

FHT x MHT for use with Tee filters, Inline filters or Hose threaded Y filters (p. 18).

PRSLHH12	12 PSI	90*	\$12.95
PRSLHH20	20 PSI	100*	\$12.95
PRSLHH30	30 PSI	110*	\$12.95



Pipe Thread x Hose Thread

¾" FPT x MHT for use with pipe threaded Y filters.

PRSLPH12	12 PSI	90*	\$12.95
----------	--------	-----	---------



Pipe Thread x Pipe Thread

¾" FPT x ¾" FPT for use with pipe threaded Y filters.

PR12	12 PSI	90*	\$11.95
PR20	20 PSI	100*	\$11.95



Medium Flow (2–20 GPM)

Pipe Thread x Pipe Thread

¾" FPT x ¾" FPT

PRSMPP12	12 PSI	90*	\$13.95
PRSMPP20	20 PSI	100*	\$13.95
PRSMPP30	30 PSI	110*	\$13.95
PRSMPP40	40 PSI	120*	\$13.95



Pipe Thread x Hose Thread

¾" FPT x MHT

PRSMPH12	12 PSI	90*	\$14.95
PRSMPH30	30 PSI	110*	\$14.95



Pipe Thread x Pipe Thread

1" FPT x 1" FPT

PR1S12	12 PSI	90*	\$15.95
PR1S25	25 PSI	105*	\$15.95
PR1S40	40 PSI	120*	\$15.95



High Flow (10–32 GPM)

Pipe Thread x Pipe Thread

1¼" FPT x 1" FPT

PRSH10	10 PSI	90*	\$29.95
PRSH30	30 PSI	110*	\$29.95



*FPT=Female Pipe Threads FHT=Female Hose Threads
MPT=Male Pipe Threads MHT=Male Hose Threads*

Pipe Thread

Female pipe thread regulators are for use with valves or pipe thread filters. Can be adapted to hose threads with an AFHMP (p. 23) on the inlet side.

*Amount of incoming static pressure the regulator can handle.

Senninger Garden Regulators

Our best-selling regulator. It is ideal for low-volume drip systems. Impact-resistant body (3½" long). Use with Tee filters, Inline filters or Hose Threaded Y filters. Flow range is 0.5–7 GPM. FHT x MHT.



PRSG10	10 PSI	90*	\$8.95
PRSG20	20 PSI	100*	\$8.95
PRSG30	30 PSI	110*	\$8.95
PRSG40	40 PSI	120*	\$8.95

Olson Static Regulators

The only hose threaded static regulator we carry! A low cost, compact, constant pressure regulator. Just 2½" long. Maximum inlet pressure is 100 PSI. Flow range of 0.5–7 GPM. FHT x MHT. Can be installed before valves and timers. Use with Tee filter, Inline filter or Hose Thread Y filters.

PROH10	10 PSI	\$9.95
PROH25	25 PSI	\$9.95



Senninger Limit Valves

Use these constant pressure regulators before timers, valves and shutoffs to reduce line pressure and extend the life of the system. Flow range is 0.5–18 GPM. FPT x FPT

Note: When system is not operating, a 30 PSI Limit Valve will allow up to 45 PSI in the system.



PRLV10	10 PSI	¾"	\$21.95
PRLV20	20 PSI	¾"	\$21.95
PRLV30	30 PSI	¾"	\$21.95
PRLV40	40 PSI	¾"	\$21.95
PR1LV30	30 PSI	1"	\$24.95

Maximum Pressure 125 PSI

DRIPT!PS

How to Select a Pressure Regulator

A regulator reduces incoming water pressure (PSI) that is too high for drip systems. Regulators (except the Senninger Limit Valve and Olson Static Regulator) must be placed downstream of valves or timers to prevent damage from constant pressure.

Choosing the Right Regulator	10–12 PSI	20 PSI	30 PSI	40 PSI
Drip Tape p. 12				
Non PC Emitters p. 25				
¼" Soaker Dripline p. 14				
Mini Sprinklers p. 30				
Misters p. 40				

High Pressure Extension Hose

When a valve assembly is so large that it stresses a hose bib, lower it to the ground with a high-pressure extension hose. Designed for constant pressure. FHT x MHT brass ends. Maximum operating pressure of 150 PSI.

- HPEX3▲ 3' Extension Hose \$14.95
- HPEX5▲ 5' Extension Hose \$17.95

Hose Saver – Timer Saver

Protect your timer by installing this 8" high-pressure hose between your faucet and timer. Designed for constant pressure.

- HPSAV▲ Hose Saver/Timer Saver \$10.95

Hose Shutoff

This hose thread manual shutoff is very handy to have at the end of a hose.

- HSO Plastic Hose Shutoff \$1.79
- HSOBR▲ Brass Hose Shutoff with Swivel \$6.95

Faucet Angle Adapters with Swivels

Use these fittings to adapt a faucet that is too low to the ground or to change the angle of a hose bib. All have standard hose ends.

- HFAA90▲ PVC 90° Adapter\$4.95
- HFAVBR▲ Brass 45° Adapter w/ Shutoff \$7.49
- HFAA▲ PVC 45° Adapter\$7.95

3-Way PVC Splitter

A ¾" PVC splitter with brass swivel made by DripWorks for use with multiple timers. Use with hose extension above.

- HSPL3▲ 3-Way Splitter\$14.95
- HSPL3SO▲ 3-Way Splitter w/ 3 HSO Shutoffs\$19.95

Female Hose Plug

- HPLUG▲ Plastic Hose Shutoff \$1.49

Ball Valves

Full Port!

SIZE	PVC Ball Valve (Threaded)		PVC Ball Valve (Slip)		Brass Ball Valve Threaded		(PVC Union) Ball Valve*	
½"	P12BVT▲	\$2.95	P12BVS▲	\$2.95	VBBILF12	\$8.95	P34UNBV▲	¾" \$8.95
¾"	P34BVT▲	\$3.95	P34BVS▲	\$3.95	VBBILF34	\$14.95	P1UNBV▲	1" \$15.95
1"	P1BVT▲	\$4.95	P1BVS▲	\$4.95	VBBILF1	\$21.95	P112UNBV▲	1½" \$21.95

These union ball valves are easier to install and are less expensive than buying the valve and union separately. Each comes with two slip ends and two threaded ends for more flexibility. The valve body is easily removable for maintenance and/or replacement. Larger Ball Valves are available online at [DripWorks.com/category/ball-valves](https://www.dripworks.com/category/ball-valves)

More products available online at [DripWorks.com](https://www.dripworks.com)

Warning: Cancer and Reproductive Harm www.P65Warnings.ca.gov

Brass 4-Way Splitter

A heavy duty brass splitter with built-in valves and hose swivel. Use with hose extension on left.

- HSPL4B▲ 4-Way Splitter \$24.95

Hose Y with Valves

Run two drip systems (with or without timers) from one faucet or leave one outlet available for a garden hose.

- HYV Plastic Hose Y \$2.49
- HYVBR▲ Brass Hose Y with Swivel ... \$10.95
- HYVHI▲ Brass Full Port Hose Y with Swivel. \$21.95

High-Flow Hose Fittings

Heavy-duty, full-port hose fittings allow for a higher flow at a lower price than the brass above. These have easy-to-grip shutoff handles and female swivel inlets.

- HSOHPL Hose Shutoff (Plastic) \$6.95
- HSOAL▲ Hose Shutoff (Aluminum) .. \$10.95
- HYVHPL Hose Y (Plastic) \$8.95
- HYVAL▲ Hose Y (Aluminum) \$13.95

Quick Connects

A fast and convenient way to change hoses without shutting off the water or unscrewing fittings. Brass fittings will take more abuse and allow a higher flow. Brass and plastic Quick Connects are not interchangeable.

Brass Quick Connect Set

- HSTOPBR▲ Brass Set\$8.95
- HMHABR▲ Brass Male End\$2.95

Plastic Quick Connect Set

- HSTOPSET 1 female/2 male ends..... \$3.19
- HMHA Male Ends (set of 2) \$1.29



Essentials for connecting unlike threads.

Hose to Pipe Adapters

Not all components in a system have the same type and size of threads. Use these fittings to connect unlike threads. Use thread sealant tape (p. 48) on pipe threaded connections to prevent leaks.

Note: Hose threads are always uniform in size.

Female Hose x ¾" Female Pipe

- AFHFP▲ Dura PVC Swivel\$1.95
- AFHFPB▲ Solid Brass\$4.95
- AFHFPBS▲ Brass Swivel\$4.49



Male Hose x ¾" Male Pipe

- AMHMP▲ Polypropylene\$0.59
- AMHMPB▲ Solid Brass\$3.95



Female Hose x ¾" Male Pipe

- AFHMP▲ Dura PVC Swivel\$1.95
- AFHMPB▲ Solid Brass\$3.95



Female Hose x Female Hose

- AFHFH▲ Dura PVC Swivel\$2.19
- AFHFHBS▲ Brass Swivel\$4.49



Male Hose x Male Hose

- AMHMH▲ Plastic\$0.89
- AMHMHb▲ Solid Brass\$3.95



Male Hose x ¾" Female Pipe

- AFPMH▲ PVC\$1.79
- AFPMHB▲ Solid Brass.....\$3.95



PVC Glue-In x Hose End

We carry both female and male hose ends for PVC pipe. AFHI and AMHI fittings will glue onto ½" PVC pipe or into ¾" PVC slip fittings (see p. 48 and 49).

- AFHI Female Hose Swivel \$1.69
- AMHI Male Hose \$1.29
- AMHI12* ½" x Male Hose \$0.95

*Glues into ½" PVC fitting.



Sprinkler to Drip Fittings

The fittings below have ½" FPT inlets to convert lawn sprinkler risers to a drip system

½" FPT x Male Hose Elbow (w/Shutoff)

To start a drip system; attach a hose threaded filter (p. 18), then a female hose start (ELFH, p. 9).

- RLSO▲ ½" FPT Adapter \$3.79



Male Hose x ½" Female Pipe

This versatile fitting has standard male hose threads (MHT) on one end and ¾" male pipe threads (MPT) on the other end. Inside the ¾" MPT end are 1/2" female pipe threads (FPT).

- AMH12FP Male Hose x ½" Female Pipe \$0.80



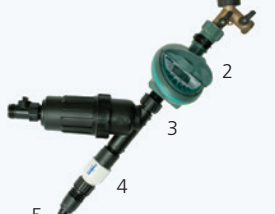
DRIP!PS Assembly examples of common timer, filter and pressure regulator assemblies.

Adapters may be used to connect pipe threaded components to hose threads. To prevent damage to the fittings, use a high-pressure hose extension (p. 22) when connecting the assembly to the faucet. Timers should not rest directly on the ground.

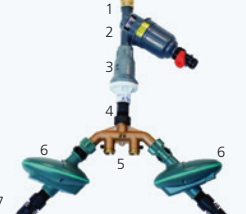


- 1. Tee Filter (FT200, p. 18)
- 2. Senninger Regulator (PRSG10, p. 21)
- 3. Easy Loc Female Hose Start (ELFH, p. 9)
- 4. Male Hose x ½" Female Pipe Adapter (see AMH12FP above)

The above setup is used for small drip systems and to convert a sprinkler riser to a drip system (see sprinkler to drip fittings above)



- 1. Brass Hose Y (HYVBR, p. 22)
- 2. Battery Timer (TGNHOSE, see online)
- 3. Filter (FYCH200, p. 18)
- 4. Senninger Regulator (PRSG30, p. 21)
- 5. Easy Loc Female Hose Start (ELFH, p. 9)



- 1. Hose to Pipe Adapter (AFHFPBS, this page)
- 2. Amiad Tagline Filter (FAMCP34, p. 19)
- 3. Senninger Limit Valve (PRLV40, p. 21)
- 4. Hose to Pipe Adapter (see AMHMP above)
- 5. 4-Way Brass Splitter (HSPL4B, p. 22)
- 6. Battery Timer (TGNHOSE, see online)
- 7. Easy Loc Female Hose Start (ELFH, p. 9)

Warning: Cancer and Reproductive Harm - www.P65Warnings.ca.gov

Questions? We're here to help. Call 800.522.3747

Use these barbed fittings with Oval Hose, polyethylene Mainline tubing or ½" Emitter tubing.



Couplers and Reducing Couplers

Coupler			Reducing Coupler		
Part	Size	Price	Part	Size	Price
BCDURA▲	½"	\$0.69	BRC3412▲	¾" x ½"	\$1.19
BC34DURA▲	¾"	\$0.79	BRC112▲	1" x ½"	\$1.49
BC1▲	1"	\$0.79	BRC134▲	1" x ¾"	\$1.39



Lighter-duty fittings that save you money.

Part	Size	Fitting Type	Price
BC	½"	Coupler	\$0.49
BC34	¾"	Coupler	\$0.59
BT	½"	Tee	\$0.78
BT34	¾"	Tee	\$1.19
BPAN	½"	Plug	\$0.42
BPAN34	¾"	Plug	\$0.54
BL	½"	Elbow	\$0.69
BL34	¾"	Elbow	\$0.89
BFH	Hose x ½" Barb	Female Hose	\$1.09
BFH34	Hose x ¾" Barb	Female Hose	\$1.19
BMH	Hose x ½" Barb	Male Hose	\$1.82



Pipe Thread by Barb

Female Pipe			Male Pipe		
Part	Size	Price	Part	Size	Price
BFP12▲	½"	\$3.49	BMP12▲	½"	\$0.69
BFP34▲	¾"	\$3.49	BMP34▲	¾"	\$0.89
BFP1▲	1"	\$3.95	BMP1▲	1"	\$0.89



Stainless Steel Crimping Clamps

These gap-free clamps are an inexpensive solution for commercial and industrial applications. They are easy to install, secure to 100 PSI and will not loosen up over time. Crimping clamps must be cut off for removal. *They are not reusable.*

Note: Will not fit on thicker-walled, high-density poly pipe (HDPE). Install with the Crimping Tool (BOTOOL).

BOSS12	Clamp for ½" Drip Tubing	\$2.80/10	\$20.00/100
BOSS34	Clamp for ¾" Drip Tubing	\$3.20/10	\$25.00/100
BOSS1	Clamp for 1" Oval Hose	\$3.50/10	\$28.00/100
BOTOOL	Crimping Tool		\$24.95

Chat with us live at [DripWorks.com](https://www.dripworks.com)



Tees and Reducing Tees

Tee			Reducing Tee		
Part	Size	Price	Part	Size	Price
BSDURA▲	½"	\$1.49	BRT3412▲	¾" x ½"	\$1.89
BT34DURA▲	¾"	\$1.69	BRT134▲	1" x ¾"	\$2.19
BT1▲	1"	\$2.19	BRT112▲	1" x ½"	\$2.19
			BRT11212▲	1½" x ½"	\$4.95
			BRT1121▲	1½" x 1"	\$4.95



Elbows and Plugs

Elbow			Plug		
Part	Size	Price	Part	Size	Price
BLDURA▲	½"	\$1.49	BP▲	½"	\$1.29
BL34DURA▲	¾"	\$1.85	BP34▲	¾"	\$1.39
BL1▲	1"	\$1.95	BP1▲	1"	\$1.89

Barbed Valves*

Barbed Valve			
Part	Size	Tubing ID	Price
BVA▲	½"	.600"	\$2.59
BVA34▲	¾"	.820"	\$3.95
BVA1▲	1"	--	\$4.95

Note: For larger barbed fittings and hose clamps see [www.DripWorks.com](https://www.dripworks.com)

*These Valves are not PVC



Hose Thread by Barb

Female Hose Start (Swivel)			Male Hose		
Part	Size	Price	Part	Size	Price
BFHDURA▲	½"	\$2.95	BMH34▲	¾"	\$1.89
BFH34DURA▲	¾"	\$2.95			
BFH1▲	1"	\$2.95			

Note: Hose threads are always the same size.

These fittings are made of schedule 40 PVC plastic and may vary in color.



Stainless Steel Tubing Clamps

American, high quality stainless steel clamps with stainless bands and gears. Stronger and longer-lasting than standard imports with just stainless bands. Use on barbed fittings when pressure is more than 20 PSI.

BSHC 12	½" Clamp Size #8	\$14.95/10
BSHC	½" or ¾" Clamp Size #12	\$15.50/10
BSHC 1	1" Clamp Size #16	\$15.95/10

Low pressure? Uneven plant spacing? Dirty water? Check out these low-cost, non-pressure compensating emitters.

We recommend using a 20 PSI pressure regulator or lower (p. 21) with these emitters.



Take-Apart Emitter

Take-Apart Emitters have a locking cap that can be removed for cleaning. The beveled barb end is the inlet and the flag end is the outlet. These emitters are great for low-pressure systems. Works down to 4 PSI.

Note: The flag end is the outlet.

DTA1-10	1 GPH @ 15 PSI (black)	\$2.49/10
DTA1-50	1 GPH @ 15 PSI (black)	\$10.95/50
DTA1-100	1 GPH @ 15 PSI (black)	\$19.95/100
DTA2-10	2 GPH @ 15 PSI (blue)	\$2.49/10
DTA2-50	2 GPH @ 15 PSI (blue)	\$10.95/50
DTA2-100	2 GPH @ 15 PSI (blue)	\$19.95/100
DTA4-10	4 GPH @ 15 PSI (green)	\$2.49/10
DTA4-50	4 GPH @ 15 PSI (green)	\$10.95/50
DTA4-100	4 GPH @ 15 PSI (green)	\$19.95/100



Non-Plugging Emitter

If your water supply is very dirty (pond or irrigation ditch) and fine screen filters clog quickly, this is the answer. First use a coarse, 30–50 mesh screen filter to capture large particles. Then use these Non-Plugging Emitters, which pass particles that would plug up most other emitters. A minimum of 15 PSI is required for these emitters to work properly. Use at the end of ¼" tubing or install directly into mainline.

DNS1	1 GPH @ 20 PSI	\$7.95/10	\$69.95/100
------	----------------	-----------	-------------



Pot Dripper

This is a basic container dripper with a 2" hold down stake and a threaded inlet. Note: A ¼" Transfer Barb (14TB, p. 15) and ¼" tubing are needed to connect this emitter to the mainline. Pot Drippers may also be used with ⅛" tubing and fittings (p. 15,16).

DPOT12	½ GPH @ 15 PSI (red)	\$3.95/10	\$31.95/100
DPOT1	1 GPH @ 15 PSI (black)	\$3.95/10	\$31.95/100



Inline Emitter

Use with ¼" tubing to make your own inline emitter tubing. Can also be added into existing ¼" lines at any time. Perfect for unevenly spaced plants. For larger plants, just add more emitters. To use, cut tubing where you want an emitter and insert the barbed ends. Use a goof plug (p. 15) to end the line.

Note: ¼" tubing has a maximum flow of about 30 GPH. Do not put too many emitters on any ¼" line.

DTMIL12-10	½ GPH @ 15 PSI (red)	\$2.95/10
DTMIL12-50	½ GPH @ 15 PSI (red)	\$11.95/50
DTMIL1-10	1 GPH @ 15 PSI (black)	\$2.95/10
DTMIL1-50	1 GPH @ 15 PSI (black)	\$11.95/50
DTMIL2-10	2 GPH @ 15 PSI (green)	\$2.95/10
DTMIL2-50	2 GPH @ 15 PSI (green)	\$11.95/50

Punch and Insert Tool

Makes insertion of Take-Apart Emitters (top) much easier!
PUDTA Punch and Insert Tool\$4.79



Questions? We're here to help. Call 800.522.3747



Long rows? Uneven terrain? Achieve precise water delivery with a pressure compensating emitter.



Pinch Drip Emitters

This emitter lies almost flat on the mainline tubing so it is not easily damaged. Designed for easy finger/thumb installation. ¼" barbed inlet and ¼" nipple outlet.

- Self-flushing
- Pressure range 15–45 PSI



Watch our video!

DPCH12-10	½ GPH (red)	\$3.79/10
DPCH12-100	½ GPH (red)	\$27.95/100
DPCH1-10	1 GPH (black)	\$3.79/10
DPCH1-100	1 GPH (black)	\$27.95/100
DPCH2-10	2 GPH (green)	\$3.79/10
DPCH2-100	2 GPH (green)	\$27.95/100



Cobra Stake Drip Emitters

A landscape spike dripper that delivers precise amounts of water directly to the root zone. Requires a length of ¼" tubing and a transfer barb (p. 15) to connect emitter to mainline tubing. Used in nurseries, root stock and landscape applications.

- Self-flushing
- Stake length: 5 inches
- Use as a PC pot dripper
- Pressure range 15–45 PSI

DCOB12-5	½ GPH (red)	\$3.49/5
DCOB12-100	½ GPH (red)	\$49.95/100
DCOB1-5	1 GPH (black)	\$3.49/5
DCOB1-100	1 GPH (black)	\$49.95/100
DCOB2-5	2 GPH (green)	\$3.49/5
DCOB2-100	2 GPH (green)	\$49.95/100

CETA PC Emitters

These PC emitters have a ¼" barb on both inlet and outlet.

- Take apart for easy cleaning
- Self-flushing
- Pressure range 15–45 PSI



DC12PC-10	½ GPH (red)	\$3.95/10
DC12PC-100	½ GPH (red)	\$32.95/100
DC1PC-10	1 GPH (black)	\$3.95/10
DC1PC-100	1 GPH (black)	\$32.95/100
DC2PC-10	2 GPH (green)	\$3.95/10
DC2PC-100	2 GPH (green)	\$32.95/100



CETA PC Emitters on a Stake

Available for either inline or end of line installation.

- Take apart for easy cleaning
- Pressure range 10–50 PSI

DCSTK-10	1 GPH End of Line on a Stake	\$8.95/10
DCSTK-100	1 GPH End of Line on a Stake	\$75.95/100
DCIL-10	1 GPH Inline on a Stake	\$8.49/10
DCIL-100	1 GPH Inline on a Stake	\$75.95/100



Meet the PC emitter solution that streamlines your system design and reduces maintenance.



Many vineyards and commercial nut growers in California use Woodpecker PC emitters.

Woodpecker PC

The heavy-duty PC emitter! This is the product of choice in the rugged vineyards of Northern California. The rubber diaphragm is the largest available and the least likely to plug. ¼" inlet and outlet. Pressure range of 15–70 PSI.

DNPC12-25	½ GPH (red)	\$10.95/25
DNPC12-100	½ GPH (red)	\$39.95/100
DNPC1-25	1 GPH (black)	\$10.95/25
DNPC1-100	1 GPH (black)	\$39.95/100
DNPC2-25	2 GPH (green)	\$10.95/25
DNPC2-100	2 GPH (green)	\$39.95/100
DNPC6-25	6 GPH (orange)	\$10.95/25
DNPC6-100	6 GPH (orange)	\$39.95/100
DNPBUG	Bug Cap (allows flow)	\$2.49/10 \$19.95/100
DNPCAP	Shutoff Cap	\$2.49/10 \$19.95/100



Woodpecker Jr. PC (Netafim)

A versatile emitter for landscapes, greenhouses, orchards and backyard gardens. One unique feature is that it won't begin to emit water until the entire system reaches 7 pounds of pressure (PSI). This is great for greenhouses where even watering is necessary or hillside plantings at different elevations.

- Pressure range of 10–50 PSI
- ¼" inlet and outlet

DNJR12-25	½ GPH (red)	\$9.95/25
DNJR12-100	½ GPH (red)	\$34.95/100
DNJR1-25	1 GPH (gray)	\$9.95/25
DNJR1-100	1 GPH (gray)	\$34.95/100
DNJR2-25	2 GPH (green)	\$9.95/25
DNJR2-100	2 GPH (green)	\$34.95/100



Large Hole Miracle Punch

This punch makes clean holes quickly and easily. For use with Vibra-Clean PC Emitters

PUMK	Large Hole Miracle Punch	\$14.95
PUMKTIP	Large Hole Replacement Tip	\$8.95



Vibra-Clean PC Emitters

These low-profile emitters have a screened inlet to prevent clogging and a wider operating pressure range than most pressure compensating emitters. They can be easily inserted into mainline tubing using a manual punch or the Installation Gun.

- Pressure range of 5–60 PSI
- More consistent flow rates
- Tapered barb for easy installation
- Replacement for Katif emitters
- Use with ½" or larger tubing

DOV12	1/2 GPH (green)	\$3.49/10	\$26.95/100
DOV1	1 GPH (blue)	\$3.49/10	\$26.95/100
DOV2	2 GPH (red)	\$3.49/10	\$26.95/100

Vibra-Clean Installation Gun

This one-step tool saves time and effort. It will insert a Vibra-Clean PC Emitter into ½" tubing without pre-punching a hole. It is ONLY for use with Vibra-Clean PC Emitters.

DOVTOOL	Installation Gun	\$26.95
---------	------------------	---------



Large Hole Punch/Insert Tool

Use one end of this tool to make a large hole in ½" or larger tubing. Use the other end as an inserter for Vibra-Clean emitters.

PUB	Black-Handled Punch	\$7.95
-----	---------------------	--------





Online video!

Shrubblers®

Shrubblers emit eight fingers of water that can be easily adjusted from a basic drip to a 24" diameter circle. Ideal for pots, tubs, land-scaped gardens, nurseries, hanging baskets, planter boxes and more.

- Fully adjustable from 0-13 gallons per hour (GPH)
- Turn cap to adjust flow or shut off completely
- Rated up to 30 PSI

DSHS-5	Full Circle on 5" Stake w break-off transfer barb	\$3.79/5
DSHS-100	Full Circle on 5" Stake w break-off transfer barb ...	\$64.95/100
DSHS180-5	Half Circle on 5" Stake w break-off transfer barb	\$3.79/5
DSHS180-100	Half Circle on 5"	\$64.95/100
DSHT-5	Full Circle on 10-32 Threaded Base	\$2.95/5
DSHT-100	Full Circle on 10-32 Threaded Base	\$44.95/100
DSHB-5	Full Circle on 1/4" Barb Base.....	\$2.95/5
DSHB-100	Full Circle on 1/4" Barb Base.....	\$42.95/100



Adjust-a-Bubbler

Easy-to-use sprayers deliver a large quantity of water in a very short amount of time. Excellent for watering large plants, small trees and shrubs.

- Easy to clean
- Twist cap to adjust flow or shut off completely
- Flow adjusts from 0–35 gallons per hour (GPH)

DAB-5	On a 1/4" Barbed Base.....	\$2.95/5
DAB-100	On a 1/4" Barbed Base.....	\$42.95/100
DABS-5	On a 5" Stake w/ a break-off Transfer Barb.....	\$4.29/5
DABS-100	On a 5" Stake w/ a break-off Transfer Barb...	\$65.95/100

Comparison of Shrubblers and Bubblers at 30 PSI

	GPH	Diameter
	5.8	6 inches
	8.7	12 inches
	13	24 inches
	16	8 inches
	25	12 inches
	35	18 inches



GROWERS CHOICE

Pressure Compensating Shrubblers

Gentle flow action with uniform coverage for all emitters on the same supply line. Considered partially pressure compensating, as there is some variation due to pressure. See chart below.

- Pre-set flow rate
- Take-apart for easy cleaning
- Colored cap for identification
- Pressure range 15–45 PSI

DSHPCB-5	PC Shrubbler with Barbed Base	\$3.29/5
DSHPCB-100	PC Shrubbler with Barbed Base	\$49.95/100
DSHPCS-5	PC Shrubbler on a 5" Stake	\$5.49/5
DSHPCS-100	PC Shrubbler on a 5" Stake	\$98.95/100

Pressure Compensating Shrubbler Diameters

PSI	GPH	Diameter
15	6.6	7"
20	7.5	8"
30	8.1	12"
40	9.3	14"



PotStream™ Adjustable Flow

The PotStream is a side-mounted adjustable sprayer. It features a gentle stream pattern that minimizes soil erosion, and the adjustable spray allows for watering of different-sized containers and pots.

- Pressure range: 5–40 PSI
- Low application rate and gentle stream pattern
- Can be taken apart for easy cleaning

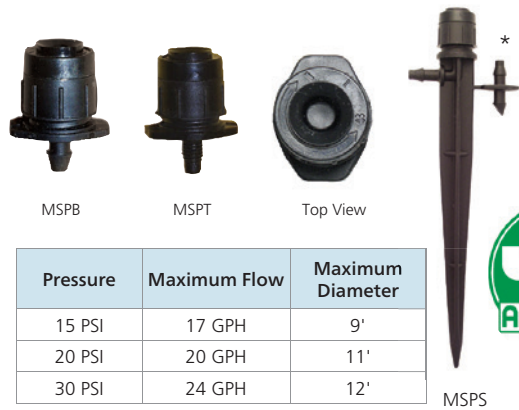
DPS-5	\$5.95/5
DPS-25	\$22.95/25
DPS-100	\$79.95/100

Flow chart

PSI	GPH	Radius
5	0–3.3	8.7"
10	0–4.7	9.1"
20	0–6.8	9.5"
30	0–8.3	11.0"
40	0–9.7	12.4"

Have a unique watering need? Choose from fixed or adjustable sprayers to get the job done.

Sprayers emit a higher volume of water than drippers do. They're often used for areas of ground cover or other dense plantings.



Pressure	Maximum Flow	Maximum Diameter
15 PSI	17 GPH	9'
20 PSI	20 GPH	11'
30 PSI	24 GPH	12'

Spectrum™

Spectrum sprayers have a full-circle spray pattern that can be easily adjusted for areas that vary in size or watering need. Great for trees, shrubs and small turf areas.

- Easy to clean
- Fully adjustable up to 12 ft. diameter
- Can be completely turned off
- Excellent way to establish plants with changing water needs

MSPB-5	On a 1/4" Barbed Base	\$3.49/5
MSPB-100	On a 1/4" Barbed Base	\$54.95/100
MSPS-5*	On a 5" Stake	\$4.79/5
MSPS-100*	On a 5" Stake	\$79.95/100
MSPT-5	On a 10-32 Threaded Base	\$3.49/5
MSPT-100	On a 10-32 Threaded Base	\$54.95/100

*Break-off Transfer Barb (14TB) is for use with 1/4" tubing.



Quarter Circle - MAJ90



Half Circle - MAJ180



Full Circle - MAJ360



Micro-Jets

An easy-to-adjust valve with your choice of spray pattern make Micro-Jets a smart choice for watering perennials, ground covers, small trees and shrubs. For quick installation, use EZ Stakes (p. 17).

- Maximum flow of 22 gallons per hour (GPH) at 30 PSI
- Radius of 7'–8' at 30 PSI for all Micro-Jets
- 10–32 threaded base
- Jets can be shut off individually.
- Quarter and half circle patterns deliver a fan spray; full circle delivers fingers of water (see photo at left)
- Pressure range 15–45 PSI

Pattern	Color	Part #	Price
Quarter Circle Micro-Jet	Black	MAJ90-5	\$4.95/5
		MAJ90-50	\$39.95/50
Half Circle Micro-Jet	Blue	MAJ180-5	\$4.95/5
		MAJ180-50	\$39.95/50
Full Circle Micro-Jet	Red	MAJ360-5	\$4.95/5
		MAJ360-50	\$39.95/50

Great options for above-ground watering needs.



Ein Dor Mini-Sprinklers

These mini-sprinklers are great for landscaped areas, garden beds, propagation, and smaller container groupings. The sprinkler heads have a press-fit base, which must be used with either a Support Assembly, Press-Fit Barb, or Press-Fit Adapter (see MESK, MEBARB, ME12B below). Use either the Plug (MEPLUG) or Press-Fit Valve (MEVSO) to shut off individual sprinkler heads.

- Full circle spray pattern
 - Even distribution of droplets
 - Flat spray angle reduces wind drift
- Great for inverted greenhouse watering
 - Lifting top prevents plugging and keeps insects out
 - Minimum pressure 20 PSI, works best at 30 PSI

Part #	Color	Flow*	Diameter
MELOW	Purple	5 GPH	5'
MELTB	Blue	9 GPH	7'
MEBLA	Black	18 GPH	9'
MERED	Red	32 GPH	13'



All Ein Dor Mini-Sprinklers \$3.95/5.....\$59.95/100

*Measured at 30 PSI. Diameter is approximately 10% smaller at 20 PSI. 50% diameter loss when inverted.



Press-Fit Support Assembly

A complete stake assembly that includes a plastic stake or metal rod, bridge, ¼" flexible vinyl tubing and a transfer barb. For Ein Dor Mini-Sprinklers and Wing Sprinklers only.

MESK	13" Plastic Stake w/2' Tubing.....	\$1.79
MESK18	18" Metal Rod w/2' Tubing.....	\$2.39
MESK36	36" Metal Rod w/3' Tubing.....	\$17.95/5*

* Due to shipping issues, 5 is the minimum quantity.

Press-Fit Barb

Use with Mini-Sprinklers and Wing Sprinklers. The barb end fits ¼" (.250" OD) tubing.

MEBARB-5	Press-Fit Barb	\$1.69/5
MEBARB-100	Press-Fit Barb.....	\$14.95/100



Press-Fit Valve

Install between the bridge and sprinkler head as an individual shutoff.

Easier than a plug!



MEVSO	Press-Fit Valve	\$3.10/5
-------	-----------------------	----------

Press-Fit x ½" FPT Adapter

Special press-fit base for use with all Ein Dor heads or Wing Mini-Sprinklers.

ME12B	Press-Fit Adapter	\$3.95/5
-------	-------------------------	----------



Wing Sprinklers (Press-Fit Mini-Sprinklers)

A low-cost alternative for large areas. Great for xeriscapes where low water usage is desirable.

- Best at low pressures (15–30 PSI)
- Even distribution of droplets.
- Full circle only!

All Wing Sprinklers \$4.95/5.....\$89.95/100

Note: Press-fit sprinklers must be used with either the Press-Fit Support Assembly, Press-Fit Barb, or Press-Fit Adapter (MESK, MEBARB, ME12B, this page) for use in mainline or ¼" tubing. Optional shutoff valve (see MEVSO, this page). Operates in upright position only.

Part #	Color	Flow @ 30 PSI	Diameter @ 30 PSI
MSWGR	Olive Green	5 GPH	8'
MSWLB	Light Blue	9 GPH	15'
MSWBL	Black	18 GPH	19'
MSWBRN	Brown	34 GPH	22'

Plug

To shut off a Mini-Sprinkler, remove the sprinkler head and insert this special press-fit plug.

MEPLUG	Plug.....	\$1.95/5
--------	-----------	----------



The perfect sprayer for container and planter watering.

Sprayers come in a variety of spray patterns, including flat, angled, and cone-shaped. Often used to water large containers or individual plants.



Down-Spray Sprinklers – Full Circle

Down-Spray sprinkler assemblies include a 12" galvanized wire stake and 36" of supply tubing with barb. The C-Frame Down-Spray is a 360° spray jet with a 45° downward trajectory that targets the root zone, to reduce runoff and eliminate over-spray.

- 20" diameter, full-circle spray pattern
- Wets evenly with minimal surface disturbance
- Use on large plants or containers
- UV stabilized for long life
- Shutoff clip to stop flow (sprinkler assembly only)



MADASBLU



MADBLK

Color	GPH @ 10 PSI	GPH @ 20 PSI
Black	4.8	7.2
Blue	7.0	10.5



Quarter

Half

Strip

Full

Complete Sprinkler Support Assembly with Tubing & Stake

MADASBLK-5	(black)	\$8.95/5
MADASBLK-25	(black)	\$37.95/25
MADASBLU-5	(blue)	\$8.95/5
MADASBLU-25	(blue)	\$37.95/25

Without Sprinkler Support Assembly

MADBLK-5	Head Only (black).....	\$1.59/5
MADBLK-100	Head Only (black)	\$24.95/100
MADBLU-5	Head Only (blue)	\$1.59/5
MADBLU-100	Head Only (blue)	\$24.95/100



⅛" Spot Spitters

Use with ⅛" tubing for a gentle, 160° downward spray. Designed for commercial container growing or balled rootstock. Also good for large potted plants in residential gardens.

- Cone-shaped spray pattern
- Uniform distribution
- Shutoff plug on the bottom
- Length is 4¾"
- Pressure Range 15-25 PSI

⅛" Spot Spitters \$1.49/5\$23.00/100

Part #	Color	Flow @20 PSI	Container Size	Spray Radius
MRSO	Orange	4.2 GPH	1–3 gallon	10"
MRSO	Dark Green	11.4 GPH	5–15 gallon	16"
MRSB	Black	15 GPH	15–20 gallon	24"

Mini-Jets

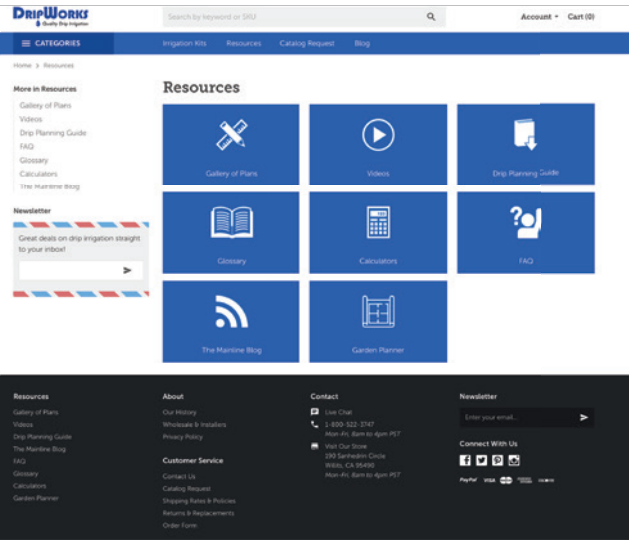
Possibly the only spray head you will ever need!

These very popular and economical sprayers work well at pressures as low as 5 PSI. They have a flat spray angle to minimize water on foliage, and various spray patterns and flows to provide versatility. At pressures above 30 PSI, the spray turns into more of a mist. All Mini-Jets have a 10-32 threaded base and will fit into ¼" tubing, or Rigid Risers. Use the hex end of the Yellow Punch (p. 16) for easy installation.

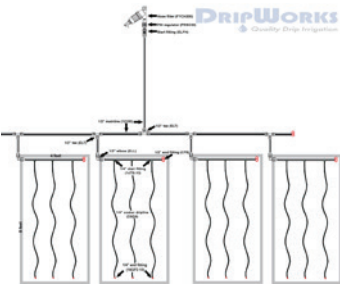
All Mini-Jets \$2.19/10\$18.00/100

Part #	Color	Spray Pattern	@ 15 PSI GPH	@ 15 PSI Radius/Ft	@ 30 PSI GPH	@ 30 PSI Radius/Ft
MSBL90	Black	Quarter	4.8	3	6.8	5
MSBL180	Black	Half	4.8	2½	6.8	3
MSBL300	Black	Full	4.8	3	6.8	3½
MSBLSTR	Black	Strip	4.8	5	7.5	5
MSBU90	Blue	Quarter	8.8	5	12.9	6
MSBU180	Blue	Half	8.8	3	12.9	3½
MSBU300	Blue	Full	8.8	3½	12.9	4
MSBUSTR	Blue	Strip	8.8	6	13.8	6½
MSGR90	Green	Quarter	13.8	5	19.5	6½
MSGR180	Green	Half	13.8	3	19.5	4
MSGR300	Green	Full	13.8	3½	19.5	4½
MSGRSTR	Green	Strip	13.8	6½	20.8	7
MSRD90	Red	Quarter	20.0	5½	28.9	6½
MSRD180	Red	Half	20.0	3½	28.9	4
MSRD300	Red	Full	20.0	4	28.9	4½
MSRDSTR	Red	Strip	20.0	6½	29.8	7

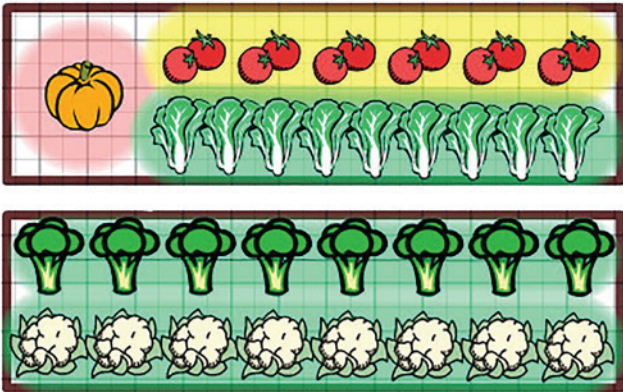
Get expert advice here: www.dripworks.com/resources
Take advantage of our free on-demand tools!



Gallery of Plans
This easy-to-understand online resource shows you the exact sequence and parts necessary to set up a drip system for your yard, garden or farm. It takes the guesswork out of placing an order and can be customized to fit most situations.



The Best Way to Plan Your Vegetable Garden
The Garden Planner provides you the data needed to plan the perfect garden. Experiment with different garden layouts, and get information on frost dates; the planner will show you the best planting times for your area and crops.



Drip Planning Guide

Careful planning and quality products are the keys to a successful drip irrigation setup. This guide provides all the information you'll need in a very well written and laid out format.



Scan here to download our Free Drip Planning Guide.



Online Calculators

These calculators take the guesswork out of planning your drip system or planning to install a pond liner.

- Flow Estimator
- Pond Liner Estimator
- Fertilizer Estimator
- Drip Tape Estimator

How-to Videos

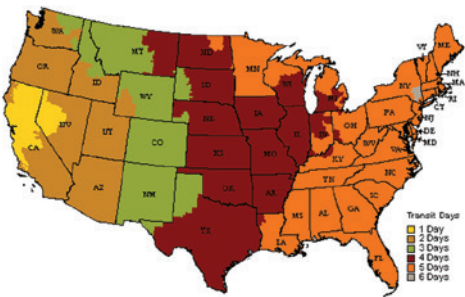
Almost 100 videos will help show you how to set up a drip system, how to set up all of our kits, and how to measure and install a pond liner. See many of our emitters and sprayers in action, guides to programming a timer, and customer garden videos. All are a must see!



Our Guarantee: An unconditional promise to serve you fairly.

Four Easy Ways to Order

1. **ONLINE** at DripWorks.com
2. **PHONE** us toll free at 800.522.3747
March–June 30 July–Feb 28
M–F 7 am–5 pm PST M–F 8 am–4 pm PST
Sat. 7 am–12 pm PST Closed Sat. and Sun.
3. **FAX** 707.459.9645
4. **VISIT** our retail store and demo garden in Northern California.
DripWorks, 190 Sanhedrin Circle, Willits, CA 95490
Store hours M–F, 9 am–4 pm PST



Delivery Information

We typically ship orders within 24 hours. We will notify you if an item is backordered.

Shipping Options

Ground Delivery Service

The map at the left shows standard ground delivery time in number of working days (does not include weekends). For shipping rates, go to DripWorks.com

Need It Yesterday? Call By 1 PM Pacific Time

We offer Next Day, 2nd Day and 3-Day Select. Call for rates. Expedited rates will be calculated for online orders.

U.S. Priority Mail

Our standard shipping method for small shipments that weigh under 3 pounds is Priority Mail. Orders are charged a \$9.00 flat rate. Small orders of 0.4 pounds or less are shipped via First Class.

AK, HI, PR, VI, and Canada orders are shipped via USPS. There is a \$10.00 handling fee for orders to Canada.

General email: support@DripWorks.com
Returns: returns@DripWorks.com

DripWorks 30-Day Money Back Guarantee

At DripWorks, we offer a 30-Day Money Back Guarantee on any new, unopened, unused product return received within 30 days after the original shipping date (not including original shipping and handling charges). All items must be in their original packaging. Return shipping is the responsibility of the purchaser. Please inspect your entire order within 48 hours upon delivery and call us with any questions at 800.522.3747.

New, unused, unopened items returned within 31–60 days of original shipment will be charged a 20% restocking fee.

New, unused, unopened items returned within 61–90 days of original shipment will be charged a 30% restocking fee. No refunds or exchanges after 90 days.

SPECIAL/CUSTOM ORDERS: Special orders and custom orders are non-returnable and non-exchangeable, except in cases of manufacturer defect.

DripWorks Kits: Partial kit returns will not be credited or refunded, except in cases of manufacturer defect.

DROP-SHIPPED ITEMS: Customer will be charged actual freight. Call for quote.

DEFECTIVE ITEMS: If an item is covered under our 30-Day Money Back Guarantee, we will refund or replace returned items we determine to be defective. If an item is outside of that time, it may still be covered under the manufacturer's warranty. Please contact us at 800.522.3747, M–F, 8 AM to 4 PM PST with any

questions. Products used on an unfiltered or improperly filtered system are not covered under manufacturer warranty and will not be accepted for return.

UNDELIVERABLE/UNCLAIMED PACKAGES: All orders returned as undeliverable or unclaimed may be charged a 15% restocking fee plus shipping charges.

DripWorks RETURNS/EXCHANGES PROCESS
1. Fill out the requested information on the return/exchange form included with your original shipment

2. Indicate whether you want a refund, exchange or house credit of items

3. Ship product and completed form back to DripWorks

DripWorks PHONE EXCHANGES: NEED IT NOW? Call our support staff, M–F, 8 AM to 4 PM PST and let us know what you need to reorder, and we will be happy to place a new order for you right away. Your credit card will be charged for the new order, and we will refund you for the return when it is received and processed. You are responsible for any return shipping and handling.

If you received the wrong parts due to our error, we would refund standard shipping charges after the items have been returned to us. These items must be returned to DripWorks via the most economical method. We will not reimburse costs for expedited shipping methods.

Mimic Mother Nature! Create ideal growing conditions for plants with Smart Pot.



These porous fabric containers keep plants healthy and looking their best season after season.



Smart Pot® Fabric Containers

- Regulates heat, keeping roots cool in the summer and warm in the winter
- Porous fabric aerates the root zone, allowing for optimal growth
- Air-prunes the plant's root structure and prevents root circling
- Perfect for fruits, vegetables, annuals, perennials and herbs
- Great for aquatic plants in ponds
- Ideal for hydroponic gardening
- Better than plastic containers

Part #	Color	Gallon	Ht. X Dia.	Price
SMP5	Black	5	9.5" x 12"	\$5.95
SMP10	Black	10	11.5" x 16"	\$8.95
SMP20	Black	20	15.5" x 20"	\$11.95
SMP30	Black	30	15.5" x 24"	\$14.95
SMP45	Black	45	18" x 27"	\$18.95
SMP65	Black	65	18" x 32"	\$22.95
SMP100	Black	100	20" x 38"	\$29.95
SMP200	Black	200	20" x 50"	\$49.95
SMPRB	Black	100	12" x 50"	\$39.95
SMPTN5	Tan	5	5.5" x 12"	\$6.49
SMPTN10	Tan	10	11.5" x 16"	\$9.95
SMPTN20	Tan	20	15.5" x 20"	\$13.95
SMPTN45	Tan	45	18" x 27"	\$19.95
SMPTN65	Tan	65	18" x 32"	\$24.95



Jain Octabubbler

This 8-outlet, pressure-compensating, self-cleaning bubbler is ideal for sprinkler conversions, indoor gardens or greenhouses where a single control point for multiple containers is desirable. Replacement flow controls (sold separately in 8 packs) can be mixed and matched for individual outlets, allowing multiple flow rates from a single unit. Pressure range 21–56 PSI.

- UV/Chemical resistant body
- Built-in backflow prevention
- Designed to function above or below grade



Watch our online video!

GROWERS CHOICE

ROCTABUB2	2 GPH Octabubbler (Blue).....	\$10.95
ROCTABUB6	6 GPH Octabubbler (Black).....	\$10.95
ROCTABUB10	10 GPH Octabubbler (Red).....	\$10.95
ROCTABUB20	20 GPH Octabubbler (Green).....	\$10.95

ROCTABUB2GFC	2 GPH Flow Control (Blue).....	\$0.60/8
ROCTABUB6GFC	6 GPH Flow Control (Black).....	\$0.60/8
ROCTABUB10GFC	10 GPH Flow Control (Red).....	\$0.60/8
ROCTABUB20GFC	20 GPH Flow Control (Green).....	\$0.60/8
ROCTABUBPLUG	Jain Octa Bubbler Plug	\$6.95/25

8-Way ¼" Outlet Manifold

Each outlet on this 8-way manifold has an adjustable flow control.
RMAN8 8-Way Manifold \$10.95



Precision nutrition + reduced fertilizer runoff? E-Z does it.

EZ-Flo Fertilizer Injectors

Economical, flexible and easy to use; great for backyard use!



Recommended for backyard gardeners, commercial landscapers and small farms. Just fill the tank (with premixed dry fertilizer or a concentrated liquid fertilizer – not oil based), set the adjustment valve, and the fertilizer solution will automatically flow when the system runs.

- Low minimum flow (120 GPH) with standard bib adapter (IEZBIB)
- Works down to 7.5 GPH using included flow restrictor discs
- Tank sits on ground for less stress on fittings and easier filling
- Adjustable dilution rates from 100:1 to 1,000:1

EZ-Flo Low-Pressure Tanks

IEZH34	¾ Gallon Tank	5-50 PSI	\$74.95
IEZH2	2 Gallon Tank	5-50 PSI	\$97.95
IEZ1GUP*	1 Gallon Tank	5-80 PSI	\$129.95

*IEZ1GUP is rated for high pressure.

Hose Thread Faucet Adapter

Replacement faucet connector for Hose Thread units. FHT x MHT.



IEZBIB	3½" Length	\$14.95
--------	------------------	---------



Chapin HydroFeed fertilizer injector

Ideal for small to medium-size gardens. Fertilizer injector comes with a clear tank for easy monitoring of usage, and funnel-top mouth for easy filling. Drain valve will allow you to quickly empty remaining product and water from the tank. Use with liquid, granular concentrates or fish emulsion applications. Works best at 40 PSI. Maximum incoming pressure 60 PSI.



IHF16	16 oz. tank.....	\$29.95
IHF24	24 oz. tank.....	\$39.95
IHF32	32 oz. tank.....	\$69.95



Choose the best, all-organic EZ-Flo fertilizer for your garden's needs

All Ferti-Maxx water soluble fertilizers contain a proprietary blend of organic supplements that assist in nutrient delivery and retention, providing results at lower application rates of comparative products. To learn more, go to DripWorks.com.

Ferti-Maxx Sugar

Facilitates the rapid growth of microbes in your soil effectively and efficiently. Enhanced with the addition of 1% magnesium nitrate for cool weather performance and improved chlorophyll production.

EZSUGAR	\$79.95
---------------	---------

Hydro-Maxx

The first line of defense against bicarbonate accumulation and poor chelation. Ensures proper penetration of water and assists with rapid delivery of applied nutrients.

EZHYDRO	\$69.95
---------------	---------

Ferti-Maxx Starter

Intended as a transplant or new landscape blend for enhanced plant health and root development.

EZSTARTER	\$89.95
-----------------	---------

Hydro-Cleanse

A safe way to gently release bicarbonate build-up in irrigation system and soil.

EZCLEANSE.....	\$44.95
----------------	---------

Ferti-Maxx Fish

Allows for larger applications without risk of burning plant material. Ideal for restoring organic matter to depleted soils.

EZFISH	\$79.95
--------------	---------

Ferti-Maxx Landscape

An all-purpose growth blend for application to the entire landscape. Excellent for the spring start up or high heat months in the summer, it will always allow your yard to perform.

EZLANDSCAPE	\$89.95
-------------------	---------

Root-Maxx

Leaves little residual. The Endo & Ecto Mycorrhizae allow for enhanced phosphorus conversion in the soil stimulating root growth and nutrient uptake.

EZROOT	\$69.95
--------------	---------

The fast way to feed entire gardens, landscapes and more.



Mazzei (Venturi Style) Fertilizer Injector

A low-cost, commercial-grade fertilizer injector with no moving parts.
Good for organic fertilizers!

- Easy installation
- Energy efficient
- Male pipe thread (MPT) inlet and outlet
- Trouble free

As water passes through the unit, a pressure differential creates a vacuum which draws fertilizer into the line. You may need to experiment to get the dosages required, but once operating, the Mazzei is incredibly reliable and easy to use. Pressure range 20–100 PSI.

Units may be purchased individually or with a suction assembly.

Mazzei Unit

Installed with bypass assembly



Injector



Bypass Assembly

(PVC socket inlet and outlet)

Bypass Assemblies

Are pre-made of Schedule 40 PVC with a ball valve to control the flow and unions for easy injector removal (for cleaning). The 3/4" bypass can be adapted to hose threads with the AFHI and/or AMHI adapters on p. 23. For use with Mazzei injectors only.



Suction Assemblies

All include 10' of clear vinyl suction tubing, metering valve, strainer and connecting fittings. All Mazzei injectors on this page include a built-in check valve.

1/2" Injectors and Accessories

IM12VLF	1/2" Very Low Flow Injector (#283)	\$39.95
IM12L	1/2" Low Flow Injector (#287)	\$39.95
IM12BPL▲	1/2" Low Flow Bypass Assembly	\$27.95
IM12H	1/2" High Flow Injector (#384)	\$57.95
IM12BPH▲	1/2" High Flow Bypass Assembly	\$27.95
IM34SA	1/2" Suction Assembly (same as 3/4")	\$64.95

3/4" Injectors and Accessories

IM34L	3/4" Low Flow Injector (#484A)	\$54.95
IM34H	3/4" High Flow Injector (#584)	\$54.95
IM34BP▲	3/4" Bypass Assembly (either flow)	\$29.95
IM34SA	3/4" Suction Assembly (same as 1/2")	\$64.95

1" Injectors and Accessories

IM1L	1" Low Flow Injector (#878)	\$89.95
IM1	1" High Flow Injector (#1078)	\$89.95
IM1BP▲	1" Bypass Assembly	\$34.95
IM1SA	1" Suction Assembly (same as 1 1/2")	\$129.95

Choose model size carefully.

Too large and it will not draw the fertilizer, too small and it will restrict the flow of your system (see Mazzei Flow Chart below). If in doubt, choose a smaller size injector and install on a bypass. We recommend using a bypass for all units for ease of adjustment and maintenance.

Mazzei Flow Chart (Venturi style)

Size	Minimum Flow at 50 PSI Inlet	Fertilizer Draw with outlet pressure at	
		30 PSI (20 PSI drop)	10 PSI (40 PSI drop)
1/2" Very Low (#283)	30 GPH	2 GPH	6 GPH
1/2" Low (#287)	60 GPH	3 GPH	8 GPH
1/2" High (#384)	150 GPH	10 GPH	14 GPH
3/4" Low (#484A)	240 GPH	12 GPH	17 GPH
3/4" High (#584)	425 GPH	21 GPH	25 GPH
1" Low (#878)	750 GPH	56 GPH	75 GPH
1" High (#1078)	1050 GPH	86 GPH	92 GPH

▲⚠ Warning: Cancer and Reproductive Harm - www.P65Warnings.ca.gov

Here's our pick for the most accurate & easy-to-maintain pump-style injector.

MixRite Injector "For the Professional Grower" *Best for Organic Fertilizers.**

It reliably meters fertilized solution into your line and is powered entirely by the water flowing through it. Choose the MixRite according to the concentration of fertilizer you want to add. Install on a bypass for easy cleaning and maintenance. A 2% internal bypass unit used for injecting highly corrosive solutions is available at DripWorks.com.

- Simple to install, operate and maintain
- Pressure loss at max flow: 14.5 PSI
- Shutoffs on all models except IMR1
- UV-resistant plastic

Model	Flow in GPH	Mix Ratios	Pressure Range	Inlet/Outlet	Max Flow	Price
IMR1▲	5.4–660/GPH	100:1 1% (non-adjustable)	3–120	3/4" MPT	11 GPM	\$299.95
IMR2SO▲	5.4–660/GPH	500:1–50:1 .3 to 2%	3–120	3/4" MPT	11 GPM	\$398.95
IMR4SO▲	5.4–660/GPH	250:1–25:1 .4 to 4%	3–120	3/4" MPT	11 GPM	\$398.95
IMR10V2▲	5.4–840/GPH	100:1–10:1 1 to 10%	3–120	3/4" MPT	14 GPM	\$599.95
<i>*The IMR10V2 is best for less concentrated, organic fertilizers.</i>						
IMRTF34▲	5.4–840 GPH	250:1–25:1 .4 to 4%	3–120	1" MPT	14 GPM	\$398.95

Note: Replacement parts available!

Backflow Prevention



Check Valves

These one-way valves keep water in a drip system from flowing back into your home water supply. Check valves are also commonly used in pump systems to eliminate back pressure on the pump. These check valves have a PVC body with a 1/2-lb. spring and may not meet local building codes.

Hose Thread

VPCKH▲	FHT x MHT	\$13.95
--------	-----------	---------

Pipe Thread

VPCK▲	3/4" FPT	\$9.95
VPCK1▲	1" FPT	\$14.95

Vacuum Breakers

A Vacuum Breaker prevents contamination of your home water supply. Most cities require them at the start of any system. Vacuum breakers partially restrict water pressure and flow, and are not rated for constant pressure. Place them after any timers or valves.



FAVBP	Plastic FHT x 3/4" MPT	\$2.95
FAVBH	Plastic FHT x MHT	\$2.95
FBFPP▲	Heavy Duty Plastic FHT x MHT	\$3.95
FBFP▲	Solid Brass* FHT x MHT	\$6.95

▲⚠ Warning: Cancer and Reproductive Harm - www.P65Warnings.ca.gov



GROWERS CHOICE



Watch our online video!



MixRites in Commercial Setup



Opting for 100% organic? Choose these liquid & dry fertilizers, soil amendments, and pest control products.



Baseline Humus

Humus is the foundation of good soil and provides many benefits that fertilizer cannot accomplish alone. Vital Garden Supply's Baseline increases plants' ability to assimilate nutrients. Use Baseline anytime in the garden, on the lawn, or around the orchard. Either premix Baseline into your soil, top dress around the root zone of plants, or use Baseline as part of a tea. Baseline is compatible with all fertilizers and soil amendments.

Baseline Granular Humus

VGB	2.2 lb.	\$15.95
VGB25	25 lb.	\$69.95

Baseline Liquid Humus

VGBLQ	1 quart	\$24.95
VGBLG	1 gallon	\$79.95

Powdered Glacial Rock

The trace minerals provided by Powdered Glacial Rock are essential for plants to achieve their highest potential. Sweeter strawberries, better-tasting vegetables, aromatic roses. Glacial Rock can be mixed into your soil, sprinkled around plants and trees or used to complement a compost tea.

VGROCK	5 lb.	\$16.95
VGROCK22	22 lb.	\$24.95
VGROCK44	44 lb.	\$39.95

California Gold

The ultimate microbial input for any grower, this is a complete inoculant for a diverse spectrum of soil microorganisms. California Gold is the result of a three- to five-year, fungal-dominant decompositions process of pure woody materials. Reduces water and fertilizer use, and increases the plant's resistance to pests and diseases.

VGH1CF		\$41.95
--------	--	---------

High-Phosphorus Soft Rock 0-13-0

Produce beautiful and prolific flowering and fruiting from plants near the end of vegetative growth. Vital Earth's High Phosphorus Soft Rock 0-13-0 is for those heavy feeders from which you expect to achieve the highest of yield, such as peppers, melons or pumpkins.

VGPBAT	5 lb.	\$25.95
VGPBAT22	22 lb.	\$52.95

High-Nitrogen Bat Guano 9-3-1

Vital Earth's® 9-3-1 High-Nitrogen Bat Guano is good for all plants in an early vegetative stage of growth and in general for all leafy plants, such as lettuces, kale, spinach, etc. The lack of odor makes it more friendly to use. Mix into your soil or top dress as needed.

VGNBAT	5 lb.	\$19.95
VGNBAT22	22 lb.	\$54.95

Insect Frass

Organic Nutrients Insect Frass stimulates the autoimmune system in plants to better protect themselves. Frass fertilizes plants, inoculates soil, boosts plant immunity, and aids in pest prevention. Organic Nutrients™ Frass is good for transplanting, soil mixing, top dressing, root drenching, foliar feeding, tea brewing, and hydroponics.

VGIF2	2 lb. bag	\$29.95
VGIF25	25 lb. bag	\$149.95

SLF100

Commercially proven enzymatic formula liquid drip line and emitter cleaner for gardeners that have salt buildup or hard water scale. Organic and OMRI listed, it works great in both hydroponic and soil applications. It's compatible with all nutrients and rooting compounds and effective in all phases of the growing cycle.

VGLINE32	1 quart	\$41.95
----------	---------	---------

Ultra Pen PT1 and PT2

Professional Water Analysis in your hand. Extremely accurate, fast and straightforward to use in diverse water quality applications. To take a measurement, you simply press a button and then dip the pen in solution. Results display in seconds. High-capacity N-type battery included.

ASAL (PT1)	Conductivity/TDS/Salinity & Temperature	\$199.95
APHT (PT2)	pH & Temperature	\$189.95

Achieve the broadest coverage with SuperNet Sprinklers.



SuperNet Pressure Compensating Sprinklers

Water more trees on the same zone with equal water distribution regardless of row length or elevation changes. Spray pattern may be enlarged as trees grow by simply changing the spinner. Heavy-duty construction for long life. Mounts on support stake (see below).

- Excellent for long rows and uneven terrain
- Ideal for orchards and new tree plantings
- Easy assembly
- Clog resistant and self-flushing
- Pressure range 25–50 PSI

Replace purple spinner with MSNSBLD to water younger trees. Break off deflector as tree grows.

SuperNet Assemblies

We recommend purchasing SuperNet sprinklers with the tubing and barb pre-installed. See flow and radius descriptions at right.

MSNPT	Purple Base—Standard	\$3.95
MSNBLUT	Blue Base	\$3.95
MSNBLAT	Black Base	\$3.95

Sprinkler Only

MSNPN	Purple Base—Standard	\$2.95
MSNBLU	Blue Base	\$2.95
MSNBLA	Black Base	\$2.95

SuperNet Accessories

The SuperNet sprinkler can be mounted on the MSNSTK stake.

MSNSTK	13" Blue Support Stake	\$0.89
MSNSBLD	Blue Spinner with Deflector	\$0.29

Tree Watering Stakes

We recommend these stakes for saturating the soil at a deep level. This encourages trees to send their roots further down, improving survival rates in drought and high winds. Promoting a deep root system also reduces surface cracking and buckling near pathways, sidewalks, patios or driveways.

- Conserves water, prevents runoff and erosion
- Aerates the soil, promotes deeper rooting
- You can easily add fertilizer into the shaft
- Internal filter to keep roots and rocks out
- Easy to drive the stake into the soil
- UV protected slotted cap for drip tubing
- 14" stake is used for small trees, shrubs, rose bushes

ASTK14	14" Watering Stake	\$9.95
ASTK24	24" Watering Stake	\$10.95



with deflector



Note: For part numbers in below chart, stock spinners are pre-installed and do not include tubing. The blue spinner (MSNSBLD) must be ordered separately and changed out (easy to do).

Part #	Flow GPH	Spinner	Wetted Radius
MSNPT		Purple (stock)	8'
(Purple base)	5.3	Blue w/ deflector	2'
		Blue w/o deflector	4'
MSNBLU(T)		Purple (stock)	8.5'
(Blue base)	10.9	Blue w/ deflector	3'
		Blue w/o deflector	5.5'
MSNBLA(T)		Black (stock)	10'
(Black base)	18.9	Blue w/ deflector	3'
		Blue w/o deflector	8'

How humans (and moisture-loving plants) beat the heat.

Misters are an effective and economical way to cool the air on patios and decks, in barns, greenhouses, kennels, and around the pool. They are also good for moisture-loving plants like ferns, salad greens and seedlings. Use a 200 Mesh Filter with all misters.

Cool Breeze Misting Nozzle

An inexpensive, low-flow, wide-angle spray for cooling large areas. Cool Breeze water particles are larger than those of the Superfine Nozzles (at right) but they still do an excellent job of cooling. Choose from a ¼" barb base or a 10-32 threaded base (for installing directly into PVC pipe or Rigid Risers). The nozzles come apart for easy cleaning.



- Pressure range: 35–80 PSI
- Cool Breeze Nozzles \$4.95/5\$69.95/100

Part #	GPH	Nozzle Color	Diameter
MND34B	¾ GPH Barb	Violet	2½'
MND1B	1 GPH Barb	Black	3'
MND34T	¾ GPH Threaded	Violet	2½'
MND1T	1 GPH Threaded	Black	3'

Diameter at 40 PSI and 6 ft. high



Tornado Misters

Higher flows for seed propagation and moisture-loving plants. Great for giant pumpkins! Simply insert into the end of ¼" tubing, mainline or PVC.



- Even distribution
- Threaded base (10–24 thread)
- Pressure range: 20–60 PSI
- Tornado Misters \$2.95/5 \$52.00/100

Part #	Color	@ 20 PSI		@ 40 PSI	
		GPH	DIA	GPH	DIA
MTFB	Black	4	4'	5½	4'
MTFR	Red	8	6'	11½	6'

2-Way & 4-Way Fogger w/Anti-Drip

This versatile fogger from Rivulus is great for seed propagation, greenhouse humidification or livestock cooling. The built-in anti-drip prevents over-watering after the system shuts off. This is a high-pressure fogger with an optimal operating range of 50–70 PSI.



- MF2W 2-Way Fogger\$3.49
- MF4W 4-Way Fogger\$4.95

Superfine Misting Nozzle

Excellent misters for summertime cooling. The mist is almost like smoke – so fine that the spray hardly reaches the ground. Nozzle threads are 1/8" MPT. See below for adapters.



Note: Filter screens are only on Regular Superfine Misters and must be removed to use with MNBA adapter.

- Pressure range: 40–120 PSI

- Regular Superfine Misting Nozzles\$7.75/5
- MNRED Nozzle with Anti-Drip\$12.50/5

Part #	GPH	Nozzle Color	Diameter
MNW	.6	White	2'
MNC	1.1	Cream	3'
MNB	1.6	Black	3'
Superfine nozzle with Anti-drip			
MNRED*	.6	Red	2'

Diameter at 40 PSI and 6 ft. high



P1218STB



MNTA



MNBA

Adapters for Superfine Nozzles

The ½" PVC tee and bushing are specially adapted for 1/8" MPT. The ¼" barbed adapter with stake is for use at the end of ¼" tubing or can be inserted directly into mainline poly tubing if necessary.

- MNTA▲ ½" Slip x 1/8" FPT Reducing Tee..... \$6.95/5
- P1218STB▲ ½" Slip x 1/8" FPT Bushing \$4.90/5
- MNBA ¼" Barbed Adapter w/ Stake \$4.95/5

Vari Mister

The Vari Mister has a built-in valve to control the flow and pattern size of the spray. Maximum diameter is 36". Can be shut off when not in use. Maximum flow ranges from 4 GPH @ 10 PSI to 7 1/2 GPH @ 30 PSI. 10–32 threaded base works with ¼" tubing or a Rigid Riser.



- MV-5 Vari Mister \$4.29/5

⚠ Warning: Cancer and Reproductive Harm - www.P65Warnings.ca.gov

Innovative watering solutions for inside the greenhouse.

No-hassle, consistent water distribution



Solexx greenhouses

Solexx™ hobby greenhouses are designed to give you the most use out of your greenhouse. The 36" aisles give you room to move, and the full-length bench frames take advantage of all the usable growing area. Composite framing is designed to give you years of service with absolutely no maintenance required—just put the greenhouse up and use it. Solexx greenhouse panels deliver optimal diffused light needed to accelerate plant growth. Plants won't burn or reach for sunlight, resulting in compact growth and earlier blooms.

Find out more at DripWorks.com/greenhouses

Now available! Solexx twin-wall greenhouse covering, available by the roll, to convert any structure into a highly efficient greenhouse. Call for more information: 800-522-3747.

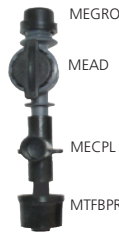
Anti-Drip Devices for Hanging Misters and Sprinklers

In greenhouses with overhead irrigation, each sprinkler or mister assembly needs an anti-drip device to prevent damage to plants directly below. All parts have press-fit ends for easy installation. Use with Mini-Sprinkler Heads (p. 30) or Tornado Misters with press-fit bases (below). *Note: The anti-drip device works in both directions. 10 PSI minimum to open.*

- MEAD Anti-drip (minimum 10 PSI)..... \$1.89
- MEGRO Grommet for PVC insertion\$0.49
- MECPL Press-fit coupler \$2.49/10
- MEBARB-5 Barb for poly insertion\$1.69/5
- MEBARB-100 Barb for poly insertion\$14.95/100
- MTFBPR Black Tornado Mister (low flow)
5.5 GPH/4' diameter at 40 PSI\$2.95/5

Example 1: A 7/16" hole is drilled into PVC, MEGRO inserted, and MEAD threaded into the grommet. Press-fit coupler (MECPL) joins the anti-drip device to the press-fit mister.

Example 1



Into PVC

Example 2: A hole is punched into poly tubing (punches, p. 16) and the assembled MEBARB + MEAD + press-fit mister is inserted.

Example 2



Into Poly



Woodpecker Multi-Outlet Drinker Assembly

Use these assemblies to split the flow of one Woodpecker or Woodpecker Jr. (p. 27) into 4 or 8 containers. Reduces flow and saves money. Great for greenhouses and nurseries.

- Attaches to the outlet of the emitter
- Each assembly includes two 18" and two 30" tubes with Arrow Drippers attached
- DMWASS is for four outlets only
- DMWST is a stackable assembly



- DMWASS 4-Way Flat Assembly....\$3.29
- DMWST* 4-Way Stackable Assembly ..
.....\$3.29

One flat, one stacking assembly joined together.

*Use with DMWASS for 4 more containers
Woodpecker Emitters not included



Inverted Mini Wobbler

- Specially designed for overhead applications.
- Great for seed propagation
- Fine spray and outstanding uniformity
- Base: ½" MPT
- Flow: 45–75 GPH
- Optimal Pressure: 20–25 PSI



Part #	Nozzle Color	At 20 PSI		At 25 PSI		Price
		GPH	Diameter*	GPH	Diameter*	
MWIG	Gold	66/GPH	34 ft.	75/GPH	34.5 ft.	\$5.95
MWIBG	Beige	45/GPH	32 ft.	50/GPH	32.5 ft.	\$5.95
MWANTI (not shown)	Anti-Drip Add-On (Sprinkler head sold separately)					\$5.98

* Diameter at 6' above beds.

⚠ Warning: Cancer and Reproductive Harm - www.P65Warnings.ca.gov

Extend your season, save water and protect your crops.

Call us today for more information and to complete your order.



ClearSpan High Tunnel Greenhouses

High tunnels are hoop houses covered with greenhouse film or woven polyethylene fabric that will help increase crop yields and extend the growing season. Farmers use high tunnels to grow many different types of crops, including strawberries, raspberries, tomatoes, beets, carrots, cucumbers, eggplants, peppers, radishes, squash and herbs, as well as roses and a variety of flowers.

Tunnel ventilation is very simple and is one of the advantages of a high tunnel over a greenhouse. Temperatures in the high tunnel can be monitored by adjusting the sides, end doors, and peak vents. Sides can be rolled up and doors can be opened fully or partially, depending on the ambient temperature. Frequently, growers will leave their high tunnels rolled up day and night in the summer, but close them at night during the spring and fall to protect plants from cold weather or potential frost.

- Frames are manufactured from Allied Gatorshield structural steel tubing.
- Made from strong copolymer resin, with tri-layer construction and UV additives. This film offers 92% light transmission and comes with a 4-year warranty.
- Triple-zippered end panels are 10 oz. 22 mil premium rip-stop translucent fabric and come complete with fabric clips for attaching.
- Four-sided ventilation is easy. Roll-Up Sides feature our exclusive "Twist-of-the-Wrist" Roll-Up Assembly.
- Heavy-duty ground posts are included.

Find out more at [DripWorks.com/greenhouses/high-tunnels](https://www.dripworks.com/greenhouses/high-tunnels)



Greenhouse Material 12 Mil PDB12CLEAR

This material allows up to 80% UV transfer.

Greenhouse material is cut to size at the factory to your specifications and is priced by the square foot (sq. ft.). One-piece greenhouse material can be fabricated in sizes up to 150,000 sq. ft. Greenhouse material under 1,000 sq. ft. will be charged an additional \$40.00 handling fee.

- Tear and puncture resistant
- Custom cut to your specifications
- Fast shipping
- Bursting strength 280 PSI
- Max size 150,000 (sq. ft.)

PDB12CLEAR \$0.27 per sq. ft.

Black/White 12 Mil



PDB12BW

This is a reinforced double-sided cover.

Widely used in light deprivation techniques, this cover is a popular choice when looking to create artificial growing conditions. Get multiple harvests every year when you extend the growing season by using these greenhouse black and white covers. The black side keeps it dark while the white side reflects the sun. These reinforced tarps are heavier and considered more high-end.

Tarps are custom cut to size at the factory to your specifications and are priced by the square foot (sq. ft.). One-piece tarps can be fabricated in sizes up to 150,000 sq. ft. Tarps under 1,000 sq. ft. will be charged an additional \$40.00 handling fee.

- Tear and puncture resistant
- Custom cut to your specifications
- Fast shipping
- Bursting strength 350 PSI
- Max Size 150,000 (sq. ft.)

PDB12BW \$0.23 per sq. ft.

We've got you covered against cold, wind, and insects.

See below for useful tips on winterizing your drip system.



GCI Rowcover

GCI Rowcover shields plants from frost, cold, wind and insects. It is an easy way to prolong the growing season in both spring and fall. Available in two weights for use on row crops, garden beds, shrubs, individual fruit trees and deck containers.

GCI Lightweight Frost Protection

- Jumpstart or prolong the growing season
- Increase yields
- Protect plants from frost, wind, and insect damage
- 85% light transparency
- 0-4 degrees frost protection

GC05750	7' x 50'	\$18.95
GC057250	7' x 250'	\$49.95
GC057500	7' x 500'	\$99.95
GC0571000	7' x 1,000'	\$199.95

GCI Mediumweight Frost Protection

- Use on nursery stock, vegetables, berries and bedding plants
- Protects from frost, wind and insect damage
- 70% light transparency
- 4-6 degrees frost protection

GC10750	7' x 50'	\$23.95
GC107250	7' x 250'	\$114.95
GC107500	7' x 500'	\$159.95
GC1071000	7' x 1,000'	\$314.95

Flush Valves

The flush valve opens when pressure drops below 2.5 PSI to drain standing water in the supply lines and prevent prolonged dripping on your plants and seedlings.



VFH	Female Hose Thread.....	\$1.29
VFP	¾" Female Pipe Thread.....	\$1.29

Loop Hoops for Rowcovers

Heavyweight galvanized steel hoops have "no knot tie loops." Simply run string through the loops and down the full length of the bed to help support row cover fabric.

Approximate dimensions: 24" H x 16" W

AGHOOP	\$29.50/10.....	\$260.00/100
--------	-----------------	--------------



DRIPT!PS



6 tips to winterize your system

In most parts of the country there is a real concern about freezing and frost damage to a drip system during winter. There are two areas of concern: the beginning of the system (timer, valves and filter) and low spots in the system where water may settle.

1. Battery timers, filters and regulators should be brought indoors. Battery timers should have the batteries removed.
2. When the filter assembly is removed, use the HPLUG (p. 22) to plug the beginning of the mainline tubing or use a plastic bag over the opening. Do not leave lines open!
3. After the main water supply is shut off, open all manual valves and set automated valves to manual open. Remove all end fittings, drain any water, and then loosely replace the ends.
4. Tubing itself is not damaged by freezing, but fittings may crack if water is left in them. Elevate line slightly to ensure that all the water drains out of the fittings.
5. For low spots in the mainline tubing, either use a flush valve or insert an emitter at the lowest point. As long as the tubing is not full of water, there should be no damage.
6. Another practice is to blow compressed air through the lines after opening the end cap.

Looking to solve hard water problems in your drip system, house or business? Here's your answer.



Aquabolt

The Aquabolt™ is ideal for hard water conditions for commercial growers and agricultural applications. Resolve saline water problems with this double-duty Aquabolt. The Aquabolt includes a static mixer to provide additional agitation for maximum benefits. Aquabolt will provide relief to hard water issues without the need to use chemicals.

- Improves solubility and nutrient uptake
- Reduces spider mites and mold
- Keeps irrigation lines, emitters and nozzles free of mineral buildup
- Neutralize soil pH and improve soil health
- Chemical free, energy free and maintenance free
- Pressure range: 0–110 PSI
- ¾" flow rate up to 3,300 GPH
- 1" flow rate up to 5,400 GPH

MAGAQA34 ¾" FPT.....	\$994.95
MAGAQA1 1" FPT	\$1,194.95
MAGAQUASS34 ¾" FPT Stainless Steel	\$1,394.95
MAGAQUASS1 1" FPT Stainless Steel	\$1,494.95

Turbolt 3/4" HT

The Turbolt™ inline unit improves soil infiltration, improves moisture retention and boosts soil health. It reduces mineral scale buildup, and will help reduce the need for chemicals to keep irrigation lines, emitters and nozzles clean. Turbolt 3/4" Hose Thread can be installed in line for drip irrigation systems.



- Reduces water hardness
- Improves nutrient uptake
- Neutralize soil pH and improve soil health
- Chemical free, energy free and maintenance free
- Pressure range: 0–110 PSI
- ¾" flow rate up to 3,300 GPH

MAGTURF34	\$259.95
-----------------	----------



Rainbolt

The Rainbolt™ inline unit transforms your water quality to a healthier, more productive and energized state. It will bust salts, improve soil infiltration and improve moisture retention. It reduces mineral scale buildup and will help eliminate the need for chemicals to keep pipes, pumps and emitters clean. For residential use, The Rainbolt 3/4" or 1" is designed to soften water for an entire house and typically one unit is sufficient.

- Improved crop yield, healthier soils & plant vitality
- Chemical free, energy free and maintenance free
- Pressure Range: 0-110 PSI
- ¾" Flow rate up to 3300 GPH
- 1" Flow rate up to 5400 GPH

MAGRAIN34 ¾" FPT.....	\$394.95
MAGRAIN1 1" FPT.....	\$459.95

Magnetic Water Conditioning

Magnetic water conditioning sets can help soften hard water without chemicals. As water passes through the magnetic field, lime and calcium are suspended so they can be flushed out of the system instead of building up in drip emitters, pipes, appliances, toilets and tubs. The units are sized for maximum pipe flow. Magnets may be doubled up for higher flows. Works on PVC, copper and poly pipe. Do not install on iron pipe or underground.



Helps eliminate and prevent scale buildup!

- Reduces costly maintenance
- Requires no power, salt or chemicals

MAG1	Drip System	½"-1" Pipe–12 GPM.....	\$79.95
MAG2	Whole House	½"-1" Pipe–12 GPM.....	\$129.95
MAG3	Ag/Industrial	1" Pipe–25 GPM.....	\$198.95

Springbolt

Easy to use, portable and versatile. Springbolt softens water without the use of salts for your showers, faucets, water heaters, dishwashers, laundry, water spigots, garden hoses, and sprinklers.

With softer water, the need for detergents is cut in half; you'll experience less biofilm and hard water spots, and enjoy the feel-good cleanliness of a healthier, softer bathing experience without the slimy feel that salt-based softeners leave.

- Reduces and reverses scale buildup in appliances and pipes
- Softer water requires less detergent and chemicals
- Healthier water for drinking, cooking, and bathing
- Less residue in showers, toilets, and sinks
- Happier houseplants and cut flowers
- Reduce irrigation requirements by 20%
- Improves soil penetration and moisture retention
- Improves seed germination
- Healthier soils



MAGSPRING34	Fits ¾" pipe	\$234.95	MAGSPRING1: Fits 1" pipe	\$1,049.95
-------------	--------------------	----------	--------------------------------	------------

Get into home composting at great prices: Your plants and crops will love you for it.

Take it from any home gardener or commercial farmer that the benefits of adding compost-enriched fertilizer to your soil are unmatched.



Compost Keepers

Our assortment of compost pails will keep your countertop clear of food scraps and do it with style! Available in white, red, or black ceramic and stainless steel 1 gallon capacity. Includes two charcoal filters.)

APAILCW	Ceramic Compost Pail (White)	\$29.95
APAILCR	Ceramic Compost Pail (Red).....	\$29.95
APAILCB	Ceramic Compost Pail (Black).....	\$29.95
APAIL	Stainless Compost Pail	\$44.95
APCFIL	Ceramic Pail Filter	\$4.95
APFIL	Stainless Charcoal Filters	\$6.95



Tea Brewers

The Vital Tea Brewer is a complete setup to make your own compost tea or extract. It can also be used as a fertilizer mix tank. A unique combination of performance and value, our brewing systems are designed to grow beneficial microorganisms exponentially.

Each model is built ready to use with high-quality food-grade conical tanks. We use Banjo fittings, manufactured and assembled in the USA, which provide fast, leakproof and durable connections. In addition, Banjo fittings easily disconnect the manifold from the tank for thorough cleaning. Vital Brewers are equipped with all the needed fittings, an aerator selected for maximum effectiveness, and an extractor bag (2 bags included with the 1,000-gallon unit). Call us at 800-522-3747 for more information.

VGBREW75	75 Gallon	\$1,500
VGBREW175	175 Gallon	\$3,077
VGBREW300	300 Gallon	\$3,300
VGBREW1,000	1,000 Gallon	\$5,857



Bokashi Kitchen Composter

The future of composting is here! Cold composting retains the nutrients that are normally lost to heat and evaporation during traditional composting. It is the most efficient and greenest method of composting and produces no greenhouse gases!

BBK2	Bokashi Bucket Kit	\$59.95
BOK2	Bokashi Bio Blend Mix (2 lb.).....	\$14.95
BOK5	Bokashi Bio Blend Mix (5 lb.).....	\$34.95

The Worm Factory®

Turn your kitchen waste into nutrient-rich compost. Just fill the trays with food scraps and rotate them as they fill up. No turning required. Managed correctly, the process is virtually odorless (we had one set up right in our store). The unit has a large capacity yet the smallest footprint (16" x 16") of any worm composter. Comes with 3 trays (expandable to 7) and includes complete instructions. Worms included.



Be a Worm Farmer!

WORM3	\$79.95
-------	-------	---------

Planning to create a beautiful water feature? Start with a high-quality pond liner.



EPDM Rubber Pond Liner

- The most flexible and natural-looking pond liner.
- Ideal for water gardens including waterfalls and streams
 - The most flexible waterproof barrier for indoors or out
 - UV stabilized for up to 20 years exposed to the sun

Shipping Instructions for Rubber Liners

Shipping is not included in the prices at right. Please call 800.522.3747 for a freight quote and estimated delivery time.

- Shipping is based on actual freight charges.
- Liners under 150 lb. are shipped via UPS.
- Liners over 150 lb. are shipped by common carrier.
- Someone must be present to inspect and accept delivery by common carrier. If you cannot unload the liner yourself, you will need to request a liftgate. Additional fees apply.
- Before signing the freight bill, inspect the liner to make sure it is the correct size and is undamaged.
- Shipping to a commercial site with equipment for unloading is recommended and can save money on freight charges.

EPDM Rubber Liner Call 800.522.3747 for freight quote			
Part#	Dimension	Weight lb.	Price
PDEPDM520	5 x 20	30	\$139.00
PDEPDM550	5 x 50	83	\$259.00
PDEPDM5100	5 x 100	165	\$479.00
PDEPDM1010	10 x 10	28	\$119.00
PDEPDM1015	10 x 15	45	\$169.00
PDEPDM1050	10 x 50	165	\$495.00
PDEPDM1515	15 x 15	63	\$249.00
PDEPDM1520	15 x 20	84	\$345.00
PDEPDM1525	15 x 25	105	\$429.00
PDEPDM1550	15 x 50	225	\$725.00
PDEPDM2020	20 x 20	112	\$445.00
PDEPDM2025	20 x 25	165	\$545.00
PDEPDM2030	20 x 30	180	\$629.00
PDEPDM2050	20 x 50	300	\$925.00
PDEPDM2530	25 x 30	225	\$805.00
PDEPDM3030	30 x 30	270	\$956.00



Geotextile Pond Liner Protective Material

- Also used for:
- Site drainage
 - French drains
 - Leach field gravel covering
 - Erosion control
 - Use under Poly liners when necessary

Non-woven geotextile fabric is a puncture-resistant, cost-effective, long-term solution for protecting EPDM or Poly liners. Used as pond liner underlayment, the soft, 8 oz. fabric (like a wool blanket) protects liners from large rocks and other sharp objects that may be hidden in the soil (sharp gravel, tree branches, glass, metal, etc.).

In the photo above, geotextile has been installed as an underlayment to protect the liner from rocks and sharp objects.

Geotextile Pricing			
Part #	Size	Size	Price
PDGEOB1515	Bundle	15' x 15'	\$69.95
PDGEOB1525	Bundle	15' x 25'	\$111.95
PDGEOB1575	Bundle	15' x 75'	\$249.95
PDGEOR15	Roll	15' x 300'	\$999.95
Call 800.522.3747 for freight quote			

Pond liner should be unfolded over the geotextile.



EPDM repair products and accessories are available at [DripWorks.com](#)

A healthy, thriving pond doesn't happen by magic. We've got the key products and materials you need.



Reinforced Poly Pond Liners

For the highest-quality water containment with the longest-lasting material, our reinforced poly liners are the best choice. Made to order at the factory, they usually ship within days, allowing extremely fast installation. The liner is rolled onto a core with an unroll strap and, if possible, shipped directly to the site.

- The strongest, most flexible reinforced poly liners!
- High puncture resistance and tear strength
- Minimum 20–25 year life when covered



We strongly recommend that you see and handle samples before ordering your liner. Call 800.522.3747 for free samples of Reinforced Polyethylene, EPDM or Geotextile. [Online Video!](#)

Sizing a Pond Liner	Small Pond	Large Pond
Length and Width	10' x 15'	40' x 60'
Average Depth of Pond	3'	10'
2 x Depth added to Length and Width =	16' x 21'	60' x 80'
Add for Apron	4'	10'
Final Dimensions	20' x 25'	70' x 90'
Total Square Feet = (length x width)	500 sq. ft.	6,300 sq. ft.

Liners under 1,000 sq. ft. will be charged an additional \$40.00 handling fee. 100 sq. ft. minimum order requirement.

The Block Bio-Water Treatment

The Block is a blend of live beneficial bacteria and enzymes designed to improve water quality by reducing unwanted nutrients. The Block will dissolve away organic sludge and reduce noxious odors caused by hydrogen sulfide, dead plant material, and fish waste. For initial application, use twice the normal dose (no risk of over application). Retreat with recommended dosage every 30–60 days as needed.



- All natural and environmentally friendly
- Increase water quality and clarity
- Effective over a wide range of pH conditions and water temperatures
- Use in water temperatures of 50 degrees or higher
- Ideal when combined with aeration
- 8 lb. of pellets can treat up to 28,000 square feet of water

PDBLOCK8 (8 lb. bag, pellets)..... \$169.95
PDBLOCK1 (1 lb. block) \$29.95
PDBLOCK5 (5 lb. block) \$89.95

Pond Size (4–6 Foot Average Depth)	The Block Application
1 Acre (325,851 gallons)	1 lb (16 ounces)
5 Acres (1,629,257 gallons)	5 lb (80 ounces)
How to determine total number of gallons in a pond: Length x width x average depth= total cubic area of pond. Total cubic are x 7.5 gallons= number of gallons in pond. See pond calculator at dripworks.com	

The Blue Dye

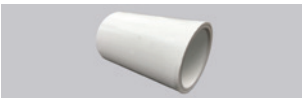
Pond Logic Pond Dye safely colors a beautiful shade of blue and protects your pond. Nature's Blue is ideal for decorative ponds of all sizes. Its powerful concentrated formula allows each quart of Pond Logic to treat more than a gallon of other pond dyes.



- 4x Concentrated quarts can treat up to 1 acre-foot of water
- No mixing required
- Enhance your pond's aesthetic appeal
- Safe for fish, plants, pets, and pond wildlife
- No restrictions on swimming, irrigation or fishing

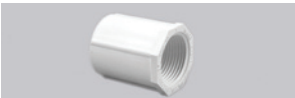
PDBLUE32 1 quart \$34.95

Pond size (4–6 Foot average depth)	Application (purge)
¼ Acre (81,462 gallons)	8–16 ounces (¼–½ Quart)
½ Acre 9162,925.7 gallons)	16–3 2 ounces (½–1 Quart)
¾ Acre (244,388 gallons)	24–48 ounces (¾–1 ½ Quart)
1 Acre (325,851 gallons)	32–64 ounces (1–2 Quart)
Treat every 4–8 weeks to maintain desired color	



Coupler (S x S)

Part	Size	Price
P12C▲	½"	\$0.25
P34C▲	¾"	\$0.35
P3412RC▲	¾" x ½"	\$0.65
P1C▲	1"	\$0.65
P114C▲	1¼"	\$0.89
P112C▲	1½"	\$0.89
P2C▲	2"	\$1.29



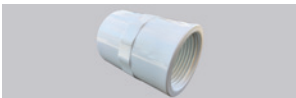
Threaded Coupler (FPT x FPT)

Part	Size	Price
P12TC▲	½"	\$0.49
P34TC▲	¾"	\$0.89
P3412TRC▲	¾" x ½"	\$1.19
P1TC▲	1"	\$1.19
P134TRC▲	1" x ¾"	\$1.79
P112TC*▲	1½"	\$7.95



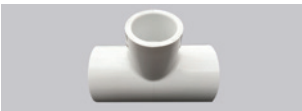
Male Adapter (MPT x S)

Part	Size	Price
P12MA▲	½"	\$0.35
P34MA▲	¾"	\$0.39
P34M12S▲	¾" x ½"	\$0.65
P1MA▲	1"	\$0.69
P114MA▲	1¼"	\$0.89
P112MA▲	1½"	\$1.19
P2MA▲	2"	\$1.49



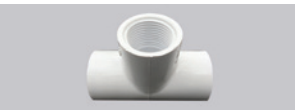
Female Adapter (FPT x S)

Part	Size	Price
P12FA▲	½"	\$0.45
P34FA▲	¾"	\$0.59
P34F12S▲	¾" x ½"	\$0.79
P1FA▲	1"	\$0.65
P112FA▲	1½"	\$1.19
P2FA▲	2"	\$1.49



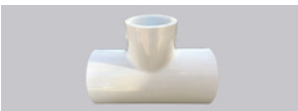
Tee (S x S x S)

Part	Size	Price
P12T▲	½"	\$0.49
P34T▲	¾"	\$0.59
P1T▲	1"	\$1.05
P114T▲	1¼"	\$1.59
P112T▲	1½"	\$1.85
P2T▲	2"	\$2.89



Combo Tee (S x S x FPT)

Part	Size	Price
P12STT▲	½"	\$0.59
P3412STT▲	¾" x ½"	\$0.79
P34STT▲	¾"	\$0.89
P112STT▲	1" x ½"	\$1.19
P134STT▲	1" x ¾"	\$1.69
P1STT▲	1"	\$1.69



Reducing Tee (S x S x S)

Part	Size	Price
P3412RT▲	½"	\$0.59
P112RT▲	¾"	\$0.98
P1121RT▲	1½" x 1"	\$2.79
P11234RT▲	1½" x ¾"	\$2.79



Marlex Street Ell (MPT x FPT)

Part	Size	Price
PMAR1290▲	½"	\$0.65
PMAR3490▲	¾"	\$0.85



Schedule 80 PVC Nipples and Risers

Part	MPT	Length	Price
P12CN▲	½"	1¼"	\$0.29
P122N▲	½"	2"	\$0.39
P1212N▲	½"	12"	\$0.89
P34CN▲	¾"	1½"	\$0.39
P342N▲	¾"	2"	\$0.39
P344N▲	¾"	4"	\$0.59
P12N▲	1"	2"	\$0.52
P23N▲	2"	3"	\$1.89



Tank Adapters with Neoprene Washer

Part	Size	FPT I.D.	Price
P34TAD	¾"		\$21.95
P1TAD	1"		\$27.95
P112TAD	1½"		\$29.95
P2TAD	2"		\$44.95

These are used as outlets for storage tanks, ponds and rainwater barrels. Creates a watertight seal with minimal effort.

Note: To make an outlet with shutoff for a rain barrel, use P34TAD, AMHMP (p. 23) and HSO (p. 22).



Slip Union

Part	Size	Price
P12SU▲	½"	\$3.95
P34SU▲	¾"	\$4.95
P1SU▲	1"	\$6.95
P112SU▲	1½"	\$12.95
P2SU▲	2"	\$16.95



Threaded Union

Part	Size	Price
P12TU▲	½"	\$3.95
P34TU▲	¾"	\$5.19
P1TU▲	1"	\$6.95
P112TU▲	1½"	\$12.95
P2TU▲	2"	\$16.95

Gorilla PVC Cement

Gorilla Glue is virtually odorless, non-flammable and user safe. Environmentally friendly and cleans up with water. It needs no primer and works on all sizes of PVC pipe, from the smallest up to 6" diameter. May be applied from 32° to 140° F.



PCG4▲	4 oz	\$10.95
PCG8▲	8 oz	\$15.95
PCGPT▲	Pint	\$24.95

Red Hot Blue Glue

A favorite with contractors. Blue, medium body, fast-setting cement. For quick pressurization and demanding conditions. Can also be used with IPS tubing and flexible PVC. Rated up through 6" PVC. Low odor. No primer needed.



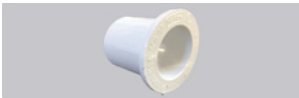
PCBG4▲	4 oz.....	\$6.95
PCBG8▲	8 oz.....	\$9.95
PCBGPT▲	Pint	\$16.95

Thread Sealant Tape

Every pipe-threaded fitting should be wrapped with thread sealant tape or sealed with pipe dope. Wrap 3–4 layers clockwise around the threads before connecting the parts.

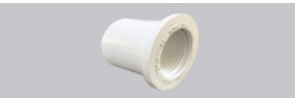


PCTEF▲	520" x 1/2" Roll	\$1.29
--------	------------------------	--------



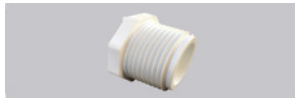
Bushing (S x S)

Part	Size	Price
P3412B▲	¾" x ½"	\$0.37
P112B▲	1" x ½"	\$0.69
P134B▲	1" x ¾"	\$0.69
P11234B▲	1½" x ¾"	\$0.95
P1121B▲	1½" x 1"	\$0.95



Bushing (S x FPT)

Part	Size	Price
P3414STB▲	¾" x ¼"	\$0.79
P3412STB▲	¾" x ½"	\$0.59
P112STB▲	1" x ½"	\$0.95
P134STB▲	1" X ¾"	\$0.95
P11234STB▲	1½" x ¾"	\$1.69
P1121STB▲	1½" x 1"	\$1.69



Threaded Bushing (MPT x FPT)

Part	Size	Price
P3412TTB▲	¾" x ½"	\$1.05
P112TTB▲	1" x ½"	\$1.49
P134TTB▲	1" x ¾"	\$1.49
P11234TTB▲	1½" x ¾"	\$2.59
P1121TTB▲	1½" x 1"	\$2.79



*PVC Insert x MPT

Part	Size	Price
P12MFA▲	½"	\$0.65
P34MFA▲	¾"	\$0.69
P1MFA▲	1"	\$1.19
P112MFA▲	1½"	\$1.95

*Glues into PVC socket

▲⚠ Warning: Cancer and Reproductive Harm - www.P65Warnings.ca.gov



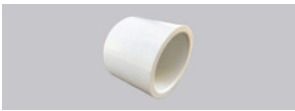
Elbow (S x S)

Part	Size	Price
P1290▲	½"	\$0.39
P3490▲	¾"	\$0.45
P3412R90▲	¾" x ½"	\$0.79
P190▲	1"	\$0.79
P11490▲	1¼"	\$1.39
P11290▲	1½"	\$1.49
P290▲	2"	\$2.29



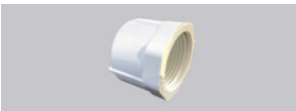
45° Elbow (S x S)

Part	Size	Price
P1245▲	½"	\$0.69
P3445▲	¾"	\$0.98
P145▲	1"	\$1.19
P11245▲	1½"	\$2.19
P245▲	2"	\$2.69



Slip Cap

Part	Size	Price
P12CA▲	½"	\$0.32
P34CA▲	¾"	\$0.37
P1CA▲	1"	\$0.59
P112CA▲	1½"	\$0.89
P2CA▲	2"	\$1.09



Threaded Cap

Part	Size	Price
P12TCA▲	½"	\$0.69
P34TCA▲	¾"	\$0.79
P1TCA▲	1"	\$1.19

PVC Lock Fittings

Use the Hydro-Rain PVC Lock Female Adapters to connect PVC pipe. Simply push the pipe into the PVC Lock Female adapter until it locks into place.

Key for PVC fitting types:

S = Slip (socket) FPT = Female Pipe Thread
T = Threaded MPT = Male Pipe Thread



PVC Lock Coupler

Part	Size	Price
PVL34C	¾"	\$2.79
PVL1C	1"	\$3.29
PVL134RC	1" x ¾"	\$3.29



PVC Lock Elbow

Part	Size	Price
PVL34L	¾"	\$2.59
PVL1L	1"	\$3.69



PVC Lock Tee

Part	Size	Price
PVL34T	¾"	\$3.79
PVL1T	1"	\$4.29



PVC Lock Male Adapter

Part	Size	Price
PVL34MA	¾"	\$2.39
PVL1MA	1"	\$2.49

More PVC Lock Parts and Installation/Removal Tools online at:www.DripWorks.com/category/pvc-lock-fittings



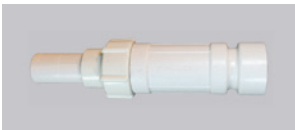
PVC Flex Fittings

These handy 18" PVC Flex Couplings make PVC installation and repairs a breeze! The schedule 40 PVC slip socket ends glue over PVC pipe, and the flexible PVC body can be bent to accommodate unusual angles, making them perfect for those tight corners in your irrigation system.

Part	Size	Price
P12FLEX▲	½"	\$4.95
P34FLEX▲	¾"	\$6.29
P1FLEX▲	1"	\$7.50

Note: Flex fittings are not rated for constant (static) pressure.

- Flexible PVC construction
- Female PVC slip socket ends
- Outdoor, underground use only



PVC Repair Couplers

- Reusable
- Chemical free
- No glue needed
- Essential PVC repair part

These Hydro-Rain PVC Lock Slide Repair Couplers are the easiest way to repair a PVC pipe. Simply push the pipe into the PVC Lock Coupler to lock in place, then pull slide insert out to desired length.

PVL34SR	3/4" Repair Coupler.....	\$5.95
PVL1SR	1" Repair Coupler.....	\$7.49

Even beginners can assemble these manifolds in minutes.

Manifold Fittings

All Swivels are 1" female pipe thread.



TMRS	Swivel x ¾" MPT	\$3.95
TM1S▲	Swivel x 1" MPT	\$2.95
TM34SOC▲	Swivel x ¾" Slip Socket	\$2.95
TM1SOC▲	Swivel x 1" Slip Socket	\$3.29
TMC▲	Cross 3 Swivels x 1" MPT	\$6.95
TMT▲	Tee 2 Swivels x 1" MPT	\$4.95
TMCAP▲	Cap 1" FPT	\$1.19
TML▲	Elbow 90° Swivel x 1" MPT	\$4.79
TMRN	Reducing Nipple1" x ¾" MPT (for ¾" valve)	\$1.49
TMN▲	Nipple 1" x 1" MPT	\$1.29
TMOR	Manifold O-Ring	\$0.69
TMSCP▲	Swivel x Swivel Coupler	\$3.69

Swivel x Barbed Fitting

TM34INS^	Swivel x ¾" barb	\$2.79
TM1INS^	Swivel x 1" barb	\$2.79

All manifold swivel parts should be hand tightened only. A manifold attached to a faucet should rest at ground level using a high-pressure hose extension (p. 22).



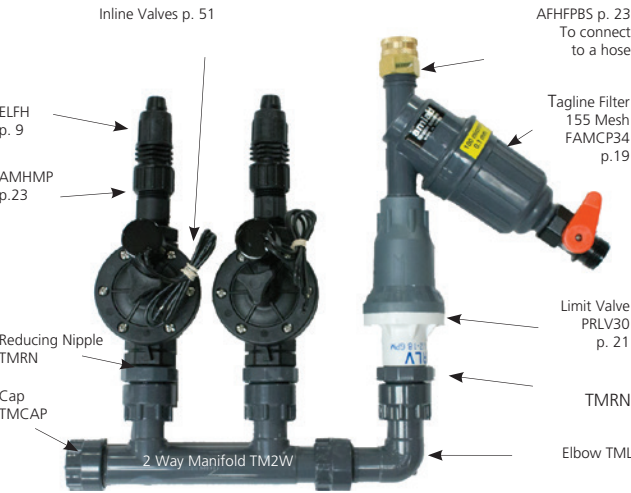
Multi Outlet Swivel Manifolds

TM4W▲	4 Outlet 15" long	\$18.95
TM3W▲	3 Outlet 11" long	\$14.95
TM2W▲	2 Outlet 7½" long	\$9.95

More manifold parts available at: [DripWorks.com](#)

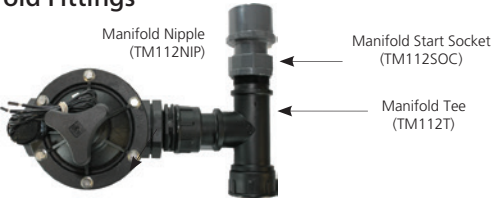
Manifold Swivel System

These PVC fittings let you create a flexible, compact manifold for almost any valve situation. The manifolds go together in minutes and the valves can be positioned more closely than if using standard PVC fittings. Valves are easy to align and systems are easy to expand. All swivel pieces are 1" female pipe thread (with O-rings) and can be easily reduced for ¾" valves. All manifold parts are 1" pipe thread unless noted. No glue or tools needed, so add-ons are a breeze. Use Thread Sealant Tape on all pipe threads without O-rings. Maximum working pressure is 150 PSI.



The system shown above is set up for two valves. The constant pressure limit valve and filter can be installed before the valves.

1½" Manifold Fittings



A fast and flexible way to hook up larger valves. Easily add new valves to existing systems or remove them for maintenance. All swivels are female pipe thread (FPT).

TM112S	Start	1½" MPT x Swivel	\$3.95
TM112SOC ▲	Start	1½" FPT x Slip Socket	\$4.79
TM112T	Tee	1½" MPT x Swivels	\$4.95
TM112NIP	Nipple	1½" MPT x 1½" MPT	\$1.95
TM112CA	Cap	1½" FPT	\$1.29

Lubricant for O-Rings & Hose Washers

Give your O-rings, washers, and gaskets a better watertight seal and prevent them from drying out and cracking with a dab of this "miracle" lubricant.

HLUBE	4 oz. bottle	\$5.95
-------	--------------	--------



Galcon 6 Station Greenhouse AC Timer

Stations: 6
Programs: 4 independent programs per station
Start Times: 4 in Irrigation mode; 1 per minute in Propagation mode
Duration in Propagation Mode: 1 second increments
Duration in Irrigation Mode: 1–min. increments up to 5 min. 5–min. increments up to 15 min. 1–hour increments up to 23 hours 1–day increments up to 30 days
Weekly Schedule: Days of week, AM/PM modes
Watering Intervals: 1 to 30 days
Ports: Pumpstart/Master Valve, Rain Sensor (Use T GALMS, available online at [dripworks.com](#))
Battery Backup: 9-volt alkaline (not included)
Warranty: 3 years
Special Features: Program specific "windows" of time. Operate two valves simultaneously.

TGNGR6 6 Station Indoor Timer..... \$99.95



Baccara AC Valve

The only electric AC valve that works with low pressure and low flow. Baccara valves have a large pressure range of 4.3 to 140 PSI and a very low head loss at high flow rates. Their efficient design and advanced technology plastics make the valves strong with very low maintenance.

- Female pipe thread (FPT) inlet and outlet
- Use these 24-volt AC valves with electric AC timers
- Pressure Range: 4.3–140 PSI
- Flow Range: ¾" valve: 0.5–22 GPM
- Flow Range : 1" valve: 0.5–29 GPM

Special Features:

- Flow control handle
- Automated or manual operation
- Progressive opening/closing reduces water hammer

VBAC34	¾" Baccara AC Valve	\$29.95
VBAC1	1" Baccara AC Valve	\$31.95

Rainbird Anti-Siphon Valves

This is the only anti-siphon valve we have found that is specifically designed for the low flow of a drip system. Pressure range is 15–150 PSI. 3-year warranty.

Note: The top of the valve should be 6" above the highest emitter in the system.

VRBAS34	¾" Anti-siphon valve, 0.2–22 GPM* with 7 PSI pressure loss	\$32.95
VRBAS1	1" Anti-siphon valve, 0.2–40 GPM*	\$34.95



Hunter Pro C AC Timer

This affordable, full-featured, 4-station timer is designed for commercial and residential use. A removable faceplate and large LCD make programming easy from any location.
Stations: 4 (up to 16 with modules)
Programs: 3
Start Times: 4 per program
Duration: 1 minute to 6 hours
Weekly Schedule: Days of week, odd/even days
Watering Intervals: 1 to 31 days
Ports: Pumpstart/Master Valve, Rain sensor with bypass
Battery Backup: Unnecessary
Warranty: 2 years
Special Features: Programmable delay between stations (0 seconds to 4 hours), programmable rain delay, optional remote control
Maximum valves open: 1 master plus 2 valves

Expandable!



THPREXT4	4-Station Exterior Timer	\$189.95
THPRINT4	4-Station Interior Timer	\$179.95
THPRMOD	3-Station Add-On Module*	\$59.95
THPRMOD9	9-Station Add-On Module*	\$199.95

4 to 12 Station AC Timer

These controllers are especially suited for greenhouse and misting applications. Easy to install and operate.
Start Times: Up to 4 per valve per day in weekly schedule mode; multiple start times available in misting mode. Weekly/Cyclical programming.
Duration: 1 second to 12 hours.
Stations: Available in 4, 6, 9 or 12 station models.
Battery Backup: 9 volts alkaline (not included)
Water Intervals: once a minute to once every 30 days

TGNAC4		\$159.95
TGNAC6		\$169.95
TGNAC9		\$189.95
TGNAC12		\$199.95



Galcon AC In-line Valves

These high-quality 24-volt AC valves are compatible with most AC timers. Galcon valves feature an easy-to-use manual on/off switch, female pipe thread (FPT) inlet and outlet, flow control stem, and a wide flow range. Pressure range for all valves is 7–145 PSI.

VGNAC34	¾" Valve	0.5–26 GPM	\$22.95
VGNAC1	1" Valve	0.5–44 GPM	\$24.95
VGN112	1½" Valve	22–140 GPM	\$67.95
VGN2	2" Valve	22–176 GPM	\$69.95



▲⚠ Warning: Cancer and Reproductive Harm - [www.P65Warnings.ca.gov](#)



These are commercial-grade, battery-operated timers with full-flow, inline valves. The valves can be used above ground or in under-ground valve boxes. All Galcon Timers have a three-year warranty.

Galcon
Battery Timer
10% OFF
when you purchase a
DripWorks
Kit Package

1 to 4 Station Battery Timers

Start Times: Up to 4 per valve per day. Daily/Monthly programming.
Duration: 1 minute to 12 hours
Stations: 1 or 4 station models. Use with Galcon DC valves, sold separately.
Batteries: One 9-volt alkaline*
Special Features: Independent programming for each valve, manual operation, rain sensor capable, master valve capable, and weather resistant.



TGN1ST	1 Station	\$99.95
TGN4ST	4 Station	\$104.95

For a six-station alternative, see the TGNGH6

Greenhouse Battery Timers

Start Times: Up to 4 per valve per day in irrigation mode; multiple start times available in misting mode. Weekly/Cyclical programming.
Duration: 1 second to 12 hours
Stations: 1 or 6 station models
Use with Galcon DC valves, sold separately
Batteries:
TGNGH: One 9-volt alkaline*
TGNGH6: Two 9-volt alkaline*



Special Features: Can be used as a standard irrigation or propagation timer. Independent programming for each valve, manual operation, rain sensor capable, master valve capable, and weather resistant.

TGNGH	1 Station.....	\$99.95
TGNGH6	6 Station.....	\$139.95

Galcon Battery Valves – 2 wires

- Battery or manual operation
- Use with Galcon DC Battery timers (this page)
- Female pipe thread inlet and outlet
- Pressure Range: 10 to 150 PSI



VGND C34	3/4" DC Valve w/ Flow control (.1–28 GPM) ..	\$34.95
VGND C1	1" DC Valve w/ Flow control (.2–35 GPM)	\$36.95
TGNVA112	1½" Valve (20–130 GPM)	\$74.95
TGNVA2	2" Valve (30–160 GPM)	\$87.95

Replacement Latching Solenoid for all Galcon Battery Valves

Galcon latching solenoid for battery-operated controllers.

Coil resistance: 3.0Ω minimum pulse
Leads: 31" (80cm) red/black Solenoid thread: 3/4 -20



TGNSOL	Replacement Solenoid	\$18.95
--------	----------------------------	---------

Baccara Battery Valve

The only DC valve that works with low pressure and low flow.

- ¾" Female pipe thread inlet and outlet
- Flow Range: 0.5–22 GPM
- Pressure Range: 4.3–145 PSI



TDCBAC34	\$34.95
----------	-------	---------

DIG Valve

- ¾" Flow range: .1–28 GPM
- Pressure Range: 10–150 PSI
- Smooth open/close to prevent pressure surge hazards
- Self-cleaning diaphragm provides reliable operation even with contaminated water
- Flow control handle for water adjustment and manual shutoff



TDIGVA34	\$39.95
----------	-------	---------

6 to 12 Station Battery Timers

Start Times: Up to 4 per valve per day in irrigation mode; multiple start times available in misting mode. Weekly/Cyclical programming.
Duration: 1 second to 12 hours.
Stations: Available in 6, 9 or 12 station models. Use with Galcon DC valves, sold separately.
Batteries:
TGND C6: Two 9-volt alkaline*
TGND C9: Four 9-volt alkaline*
TGND C12: Four 9-volt alkaline*

Special Features: Irrigation or propagation modes. Independent programming for each valve, rain sensor capable, manual operation, sensor port to individual valves, master valve capable, seasonal adjustment by program, and weather resistant.

TGND C6	6 Station	\$169.95
TGND C9	9 Station	\$249.95
TGND C12	12 Station.....	\$264.95

*Batteries Not Included

**Using pipe dope on any valve will void the warranty. Always install valves horizontally.



Dial Timer

Start Times: Every 3, 6, 12 hours or 1, 2, 3, 4, 7 or 14 days
Duration: 2, 5, 10, 15, 30, 45 minutes or 1, 3, 6 or 9 hours
Pressure Range: 15 to 145 PSI
Flow Range: 0.5 to 5.2 GPM @ 30 PSI
Batteries: One 9-volt alkaline*
Special Features: Easiest programming of any battery operated timer, start delay.



TGNDIAL	Dial Timer	\$47.95
---------	------------------	---------

Easy Program LCD Timer

Start Times: Every hour, or up to once a week
Duration: 1, 2, 5, 10, 15, 30, 45 min. or 1, 2, or 4 hours
Pressure Range: 15 to 115 PSI
Flow Range: 0.5 to 5.2 GPM @ 30 PSI
Batteries: One 9-volt alkaline*
Special Features: Sturdy, compact body with a flip-open panel. LCD display powers down to extend battery life. Manual override. Watertight battery compartment.



TGNEZ	EZ Flip Open LCD Timer	\$44.95
-------	------------------------------	---------



Multi-Valve LCD Timer

Single program timer for up to 4 hose-mounted valves. Valves operate in sequence. Includes 4-outlet manifold, timer and two valves (add two more valves as needed). Wall mount included, also works well on the ground with hose extension (p. 22).



Start Times: Up to 3 per day—select specific days of the week
Duration: 1 to 99 minutes (per valve)
Pressure Range: 10 to 80 PSI
Flow Range: 0.5 to 6.5 GPM per each valve
Batteries: Two AA alkaline*

TOR4W▲	Multi-Valve LCD Timer with two valves.....	\$98.95
TOR4VA	Add-on Valve	\$19.95

Manual irrigation timer: when you need the control

Single Outlet Wind-Up Timer

Simply turn the dial each time you want it to water, and the timer will automatically shut off the water flow. One-year warranty.
Duration: Up to 120 minutes
Pressure Range: 5 to 120 PSI
Flow Rate: Up to 8 GPM
Special Features: Comfort grip handle, manual on/off



TORWU	Single Outlet Wind-Up Timer.....	\$14.95
-------	----------------------------------	---------

* Batteries Not Included. Alkaline batteries available online

⚠ Warning: Cancer and Reproductive Harm - www.P65Warnings.ca.gov

Timers for tough spots.

A great choice for low pressure systems

Zero Pressure Timer

Unlike most timers, this timer does not require pressure to operate. Works great on a faucet, or attached to a tank or barrel. This universal timer can be used for any home or garden situation and it will also operate at extremely high pressure.



Start Times: Every hour, up to once a week
Duration: 1, 3, 10, 15, 20, 30, 45, 60, 90, or 120 min.
Pressure Range: 0 to 125 PSI
Flow Range: Up to 6 GPM @ 50 PSI
Batteries: Two AA alkaline*
Special Features: Easy-to-program dials and low battery indicator.

TZP	Zero Pressure Timer	\$39.95
-----	---------------------------	---------

A great off-grid solution where battery or electric timers just won't cut it



LEIT Solar Timer Never buy another battery again!

Powered by ambient solar light, this DIG timer is the world's first sustainable irrigation timer with no battery or AC power source! No direct sunlight required.



Start Times: Up to 5 per day
Duration: 1 minute to 6 hours
Pressure Range: 10 to 150 PSI
Flow Range for TDLT34: 0.1 GPM to 25 GPM
Flow Range for TDLT1: 0.1 GPM to 30 GPM
Ports: Rain sensor compatible, see online
Special Features: Manual on/off, power saving LCD screen, monthly seasonal adjustment (0–200%), flow control handle, timer is removable from valve for easy programming. Valves have female pipe thread (FPT) inlet and outlet.

TDLT34	Solar Timer with ¾" Valve.....	\$119.95
TDLT1	Solar Timer with 1" Valve.....	\$124.95

DIG Hose Solar Timer

The DIG Waterproof Solar Powered Timer is an environmentally friendly timer functioning only on clean, renewable, solar power without the need of a backup battery or AC power. The ¾" hose thread inlet and outlet make it easy to attach to any faucet or ¾" hose thread fitting.



Start Times: Up to 4 per day
Duration: 1 minute to 5 hours and 59 minutes
Pressure Range: 10–100 PSI
Flow Range: .1–8 GPM
Special Features: Powered by ambient light, easy to install, and it features a large LCD screen that makes it easy to read and program. Rain sensor capable and manual operation available.

TDIGSOLAR	\$59.95
-----------	-------	---------

Control at your fingertips: Download Galcon's easy-to-use FREE app (Android and iOS) to your smartphone or tablet and remotely manage these Bluetooth-enabled timers.



LCD Timer

Start Times: Up to 4 per day
Daily/Weekly or cyclical programming
Duration: 1 minute to 12 hours
Pressure Range: 15 to 145 PSI
Flow Range: 0.5 to 5.2 GPM @ 30 PSI
Batteries: One 9-volt alkaline*

Special Features: Easy programming with digital readout, manual override, manual rain off, and low battery indicator.

Bluetooth model

TGNHOSEBT	Bluetooth LCD Timer	\$45.95
* Batteries Not Included		



Bluetooth model available!

High Flow LCD Timer

Start Times: Up to 4 times per day, every day up to 30 days.
Duration: 1 minute to 12 hours
Pressure Range: 10 to 115 PSI; Bluetooth 10–145 PSI
¾" Flow Range: 0.5 to 28 GPM @ 30 PSI
1" Flow Range: 0.5 to 32 GPM @ 30 PSI

Special Features: Removable controller for easy programming, water-resistant construction, manual override and low battery indicator. Built-in high flow valve with ¾" or 1" female pipe thread inlet and outlet. ¾" model includes adapters for female hose inlet and male hose outlet.

TGNHFBT	¾" High Flow Bluetooth Timer	\$109.95
TGNHF1BT	1" High Flow Bluetooth Timer	\$114.95
TGNHF	¾" High Flow Timer	\$74.95
TGNHF1	1" High Flow Timer	\$78.95
TGNHFWP	¾" High Flow Waterproof Timer	\$89.95

Alternator Valve

Don't pay for another timer or build a complex manifold! Simply attach our hose-thread alternator valve. Ideal for remote applications.

- ◆ Flow switches with each timer cycle
- ◆ No batteries required
- ◆ Allows flows up to 6 GPM
- ◆ Pressure range from 14–140 PSI
- ◆ Rugged, impact-resistant construction

TGNALT	Alternator Valve	\$29.95
--------	------------------------	---------



With our Bluetooth-enabled timers, you can control irrigation from your phone!

Galcon Battery Timer

10% OFF

when you purchase a DripWorks Kit Package



Bluetooth model available!

Flip Open LCD Timer

Start Times: Up to 4 per day; Daily/weekly programming
Duration: 1 minute to 12 hours
Pressure Range: 15 to 115 PSI; Bluetooth 15-145 PSI
Flow Range: 0.5 to 5.2 GPM @ 30 PSI
Batteries: One 9-volt alkaline*

Special Features: Sturdy, compact body with a flip-open panel. LCD display powers down to extend battery life. Watertight battery compartment. Manual override.

TGNLIDBT	Bluetooth Flip Open LCD Timer	\$49.95
TGNLID	Flip Open LCD Timer	\$45.95

* Batteries Not Included



Need batteries?
We've got you covered! Find what you need at [DripWorks.com](https://dripworks.com)

Emitter Tubing ♦ Drip Tape ♦ Mainline Tubing ♦ Timers ♦ Fittings ♦ Injectors ♦ Pond Liners

Drip Tape Kits for Row Crops see p. 4



Small Drip Tape Kit

Waters 10 20' rows

KDT1	Small Kit	\$89.95
KDT1-T	Kit plus timer	\$134.95

Medium Drip Tape Kit

Waters 20 100' rows (1/8 acre*)

KDT2	Medium Kit	\$295.95
KDT2-T	Kit plus timer	\$339.95

Large Drip Tape Kit

Waters 40 100' rows (1/4 acre*)

KDT3▲	Large Kit	\$469.95
KDT3-T▲	Kit plus timer	\$568.95

Find a complete list of kit components online at DripWorks.com

*Acreage estimations based on 33" row spacing. Your situation may vary.

▲⚠ Warning: Cancer and Reproductive Harm - www.P65Warnings.ca.gov

Four Easy Ways to Order

- 1. ONLINE** at DripWorks.com
- 2. PHONE** us toll free at 800.522.3747
March–June 30, M–F 7am–5pm PST, Sat. 7am–12pm PST
July–Feb 28, M–F 8am–4pm PST, Closed Sat. and Sun.
- 3. FAX** 707.459.9645
- 4. VISIT** our retail store and demo garden in Northern California.
DripWorks, 190 Sanhedrin Circle, Willits, CA 95490. Store hours M-F, 9am-4pm PST

Galcon
Battery Timer
10% OFF
when you purchase a
**DripWorks
Kit Package**

Follow us:    

Chat with us live: DripWorks.com

Call us: 800.522.3747