

# SimPad

## User Guide



## Intended Use

---

The SimPad System is an easy to use wireless tool that performs relevant medical simulation training, including debriefing, in various user settings. With a large, intuitive touch screen, SimPad is a “Pick up and Play” experience, delivering simulation-based education, easily and efficiently.

There are two ways to control simulations: Automatic Mode and Manual Mode. This allows customized simulations to meet specific needs.

The SimPad System is compatible with a broad range of Laerdal products including manikins, patient simulators, and task trainers as well as standardized patients.

This User Guide describes operating instructions for the following models:

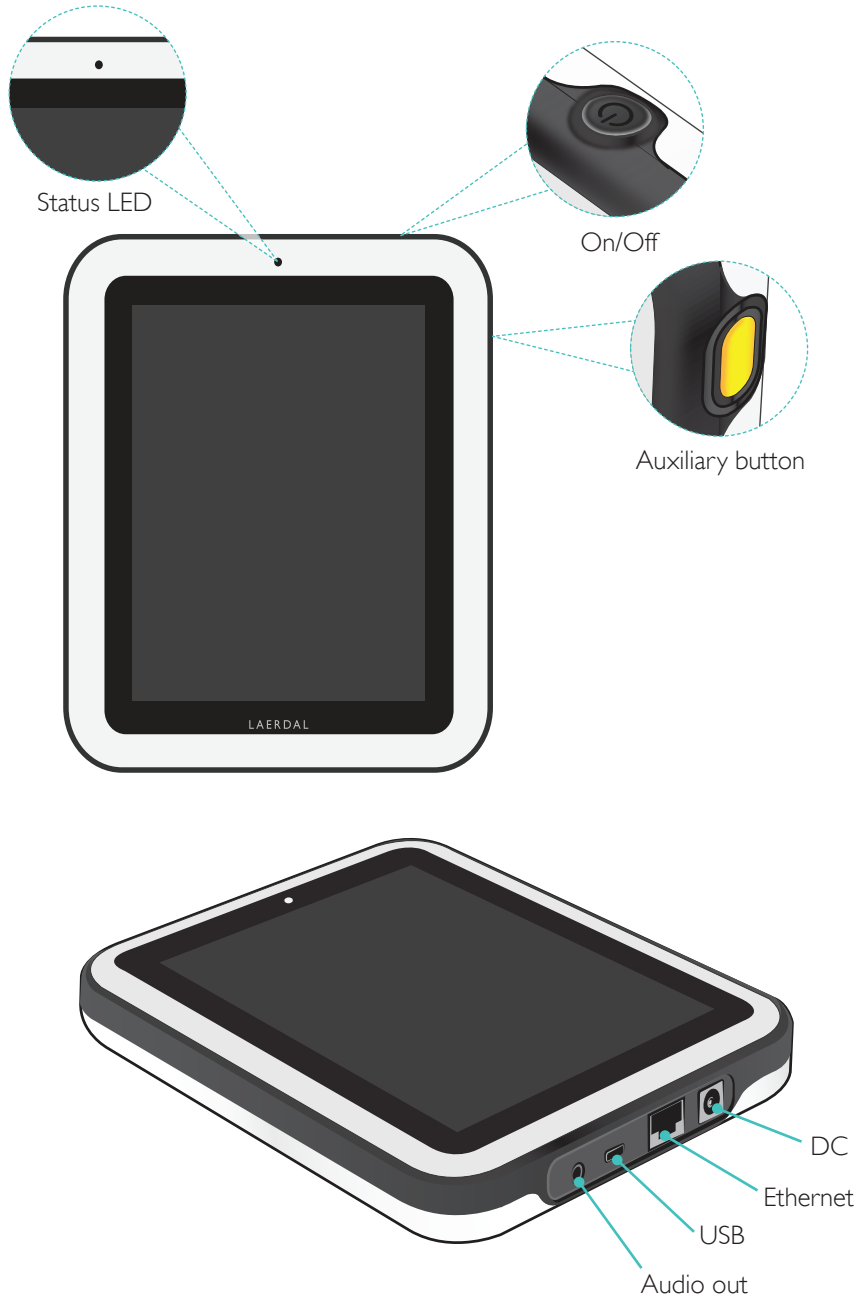
- SimPad
- Link Box
- SimPad PLUS
- Link Box PLUS

SimPad and Link Box, when used throughout this User Guide, applies to both SimPad PLUS and Link Box PLUS models, unless otherwise specified.

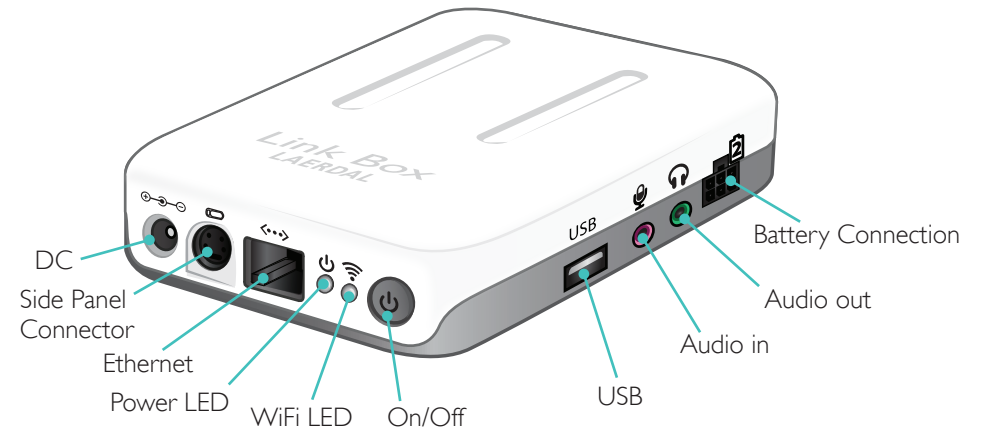
## Contents

---

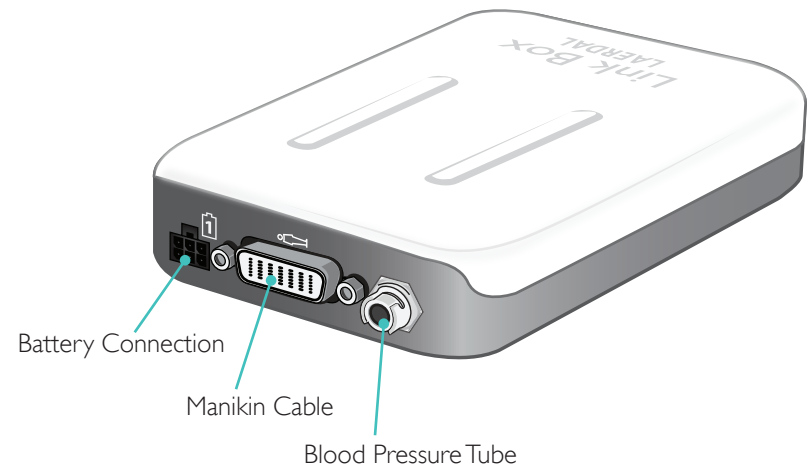
|                                      |    |
|--------------------------------------|----|
| Intended Use                         | 2  |
| SimPad Overview                      | 4  |
| Link Box Overview                    | 5  |
| SimPad PLUS Overview                 | 6  |
| Link Box PLUS Overview               | 7  |
| SimPad Setup                         | 8  |
| Link Box Setup                       | 10 |
| SimPad Setup                         | 12 |
| SimPad PLUS Setup                    | 14 |
| SimPad Setup                         | 16 |
| Link Box Setup                       | 17 |
| System Setup                         | 18 |
| Home Screen Overview                 | 20 |
| Automatic Mode                       | 21 |
| Manual Mode                          | 25 |
| QCPR                                 | 33 |
| Simulated Patient Monitor            | 38 |
| Options - SimPad                     | 41 |
| Options - SimPad PLUS                | 42 |
| Network                              | 44 |
| Network - SimPad                     | 46 |
| Network - SimPad PLUS                | 47 |
| SimStore                             | 49 |
| Software                             | 51 |
| Sounds                               | 52 |
| Laerdal Li-Ion Battery - SimPad      | 54 |
| Laerdal Li-Ion Battery - SimPad PLUS | 55 |
| Laerdal Li-Ion Battery               | 56 |
| Features                             | 57 |

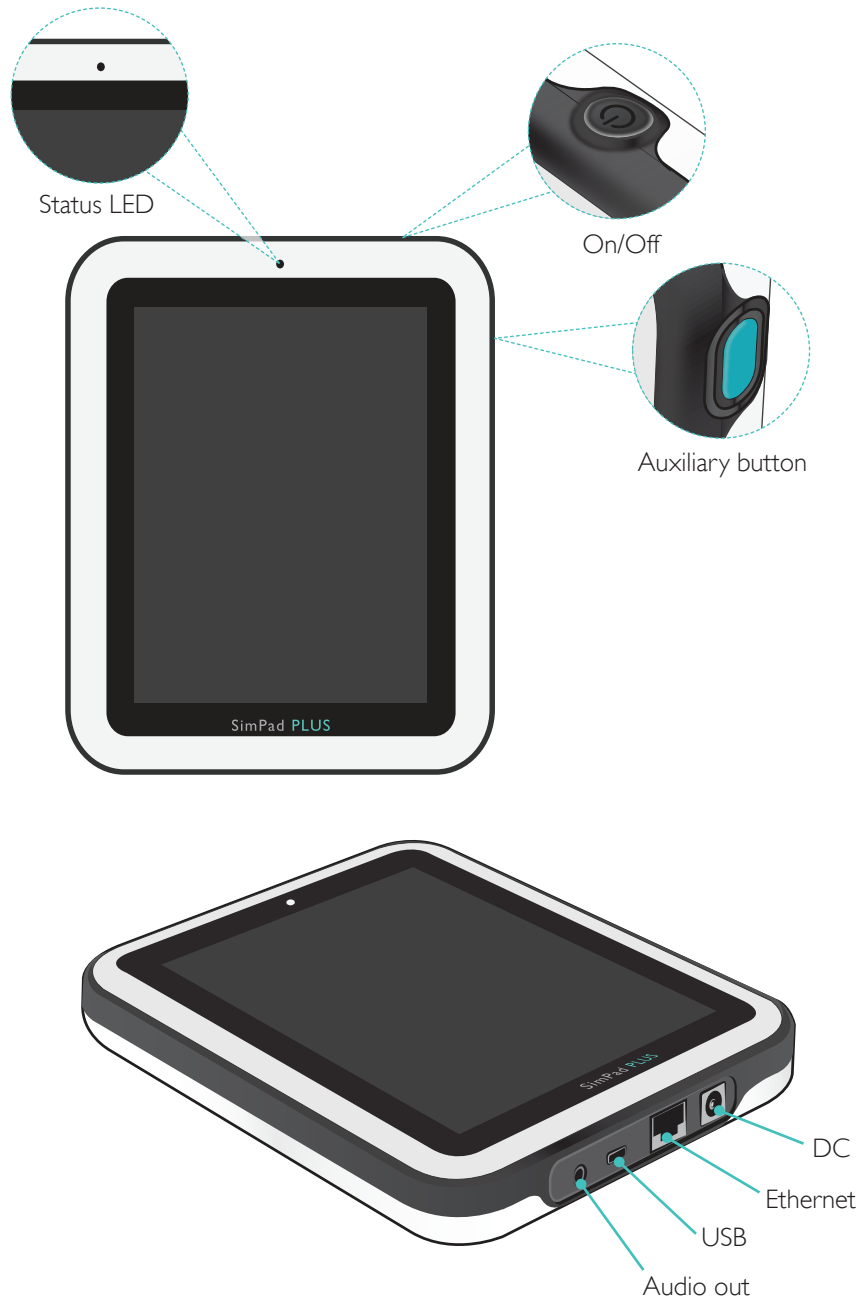


Front View

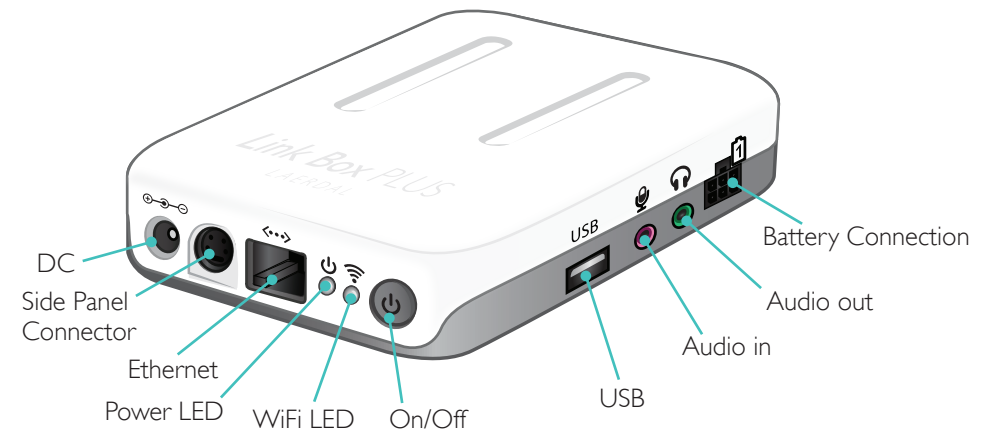


Back View

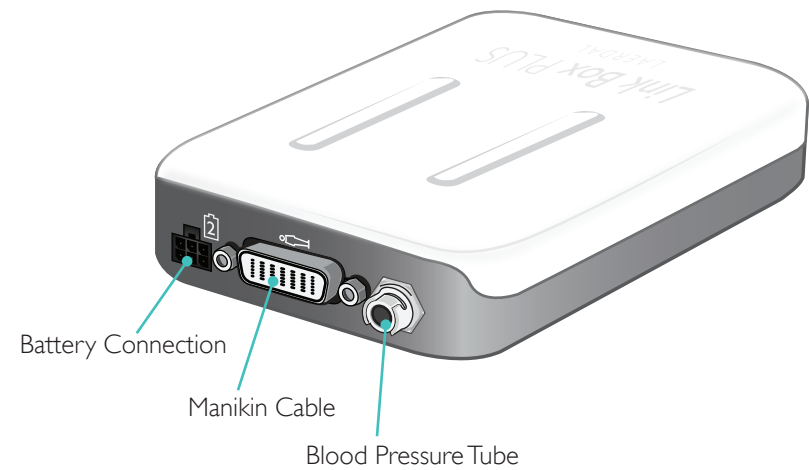




Front View



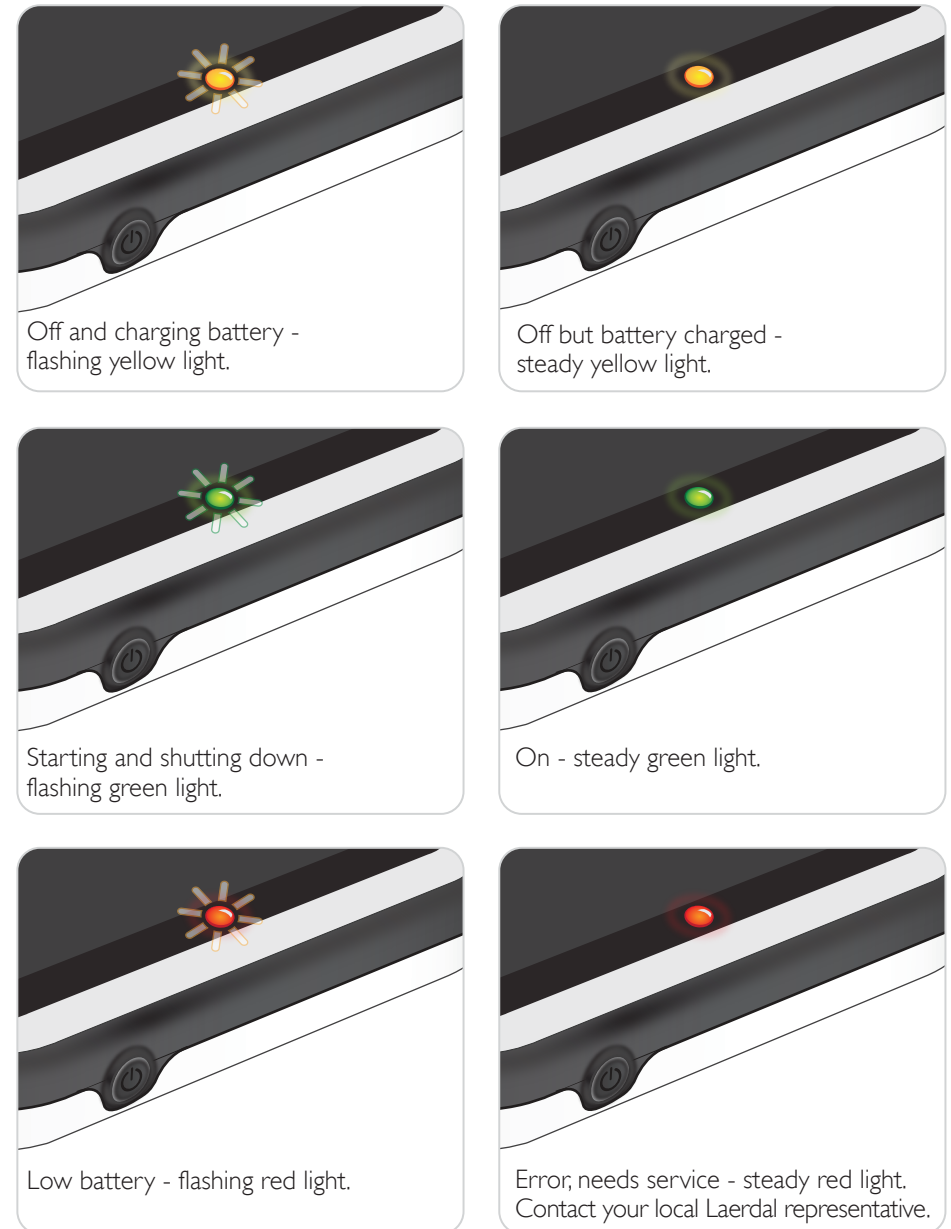
Back View



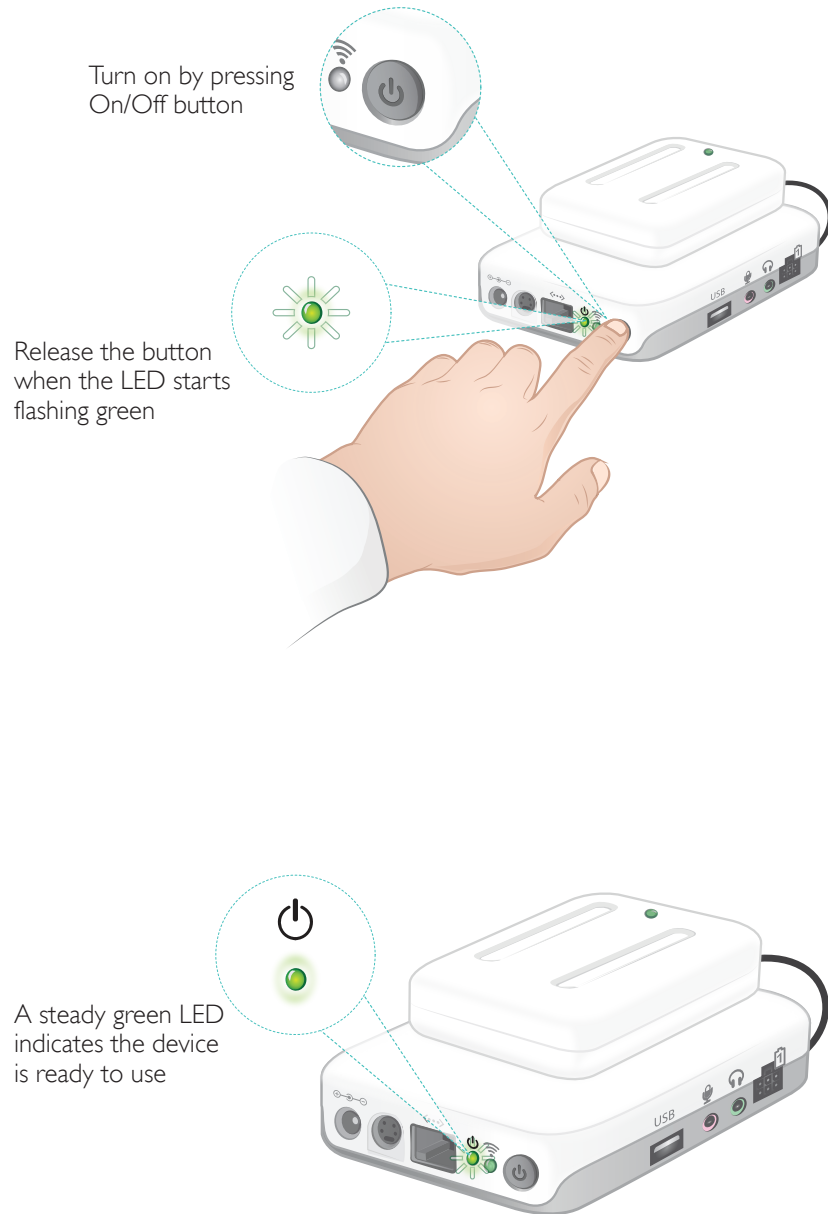
Turn On



Status LED

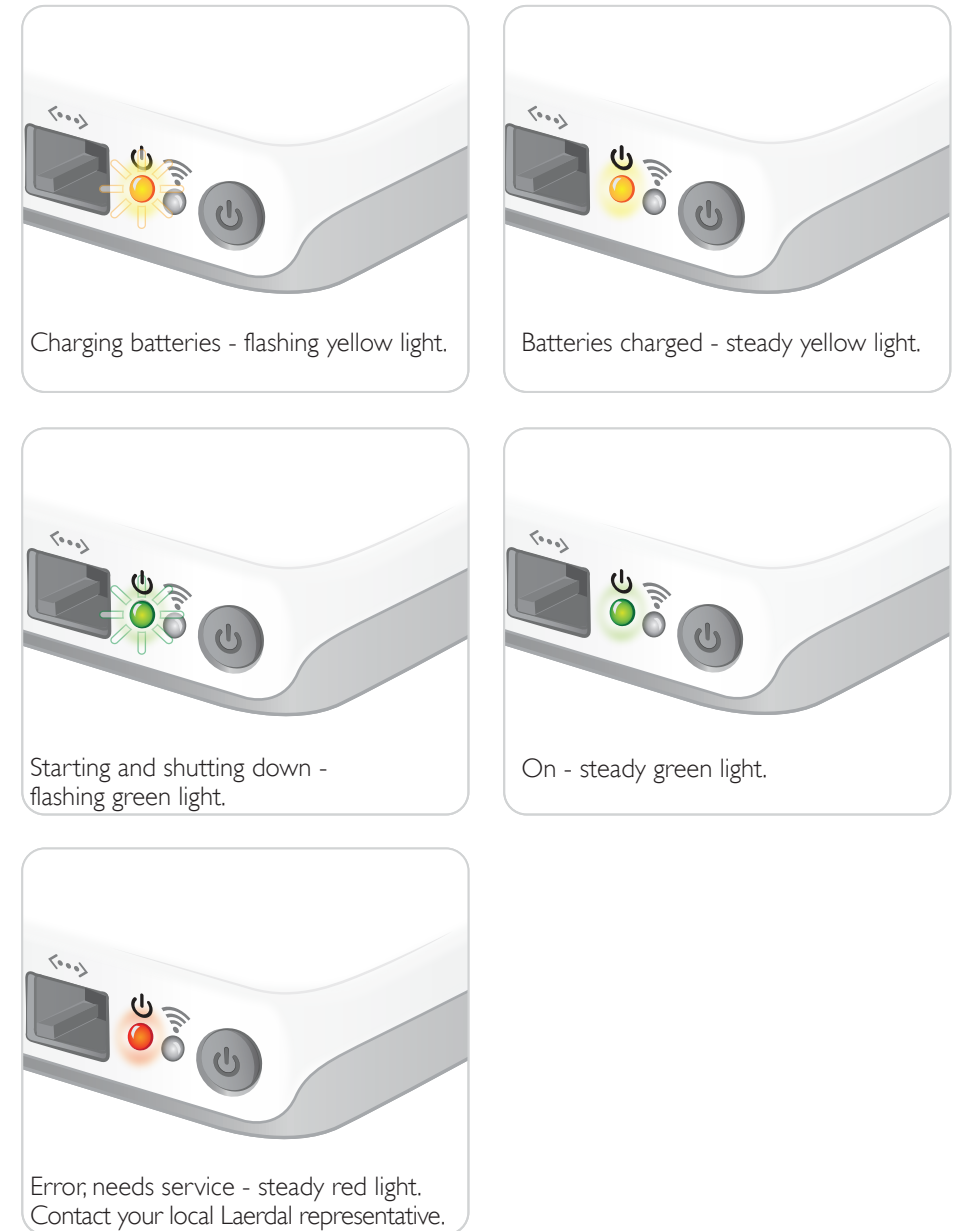


Turn On



Status LED

The Power LED also indicates status.



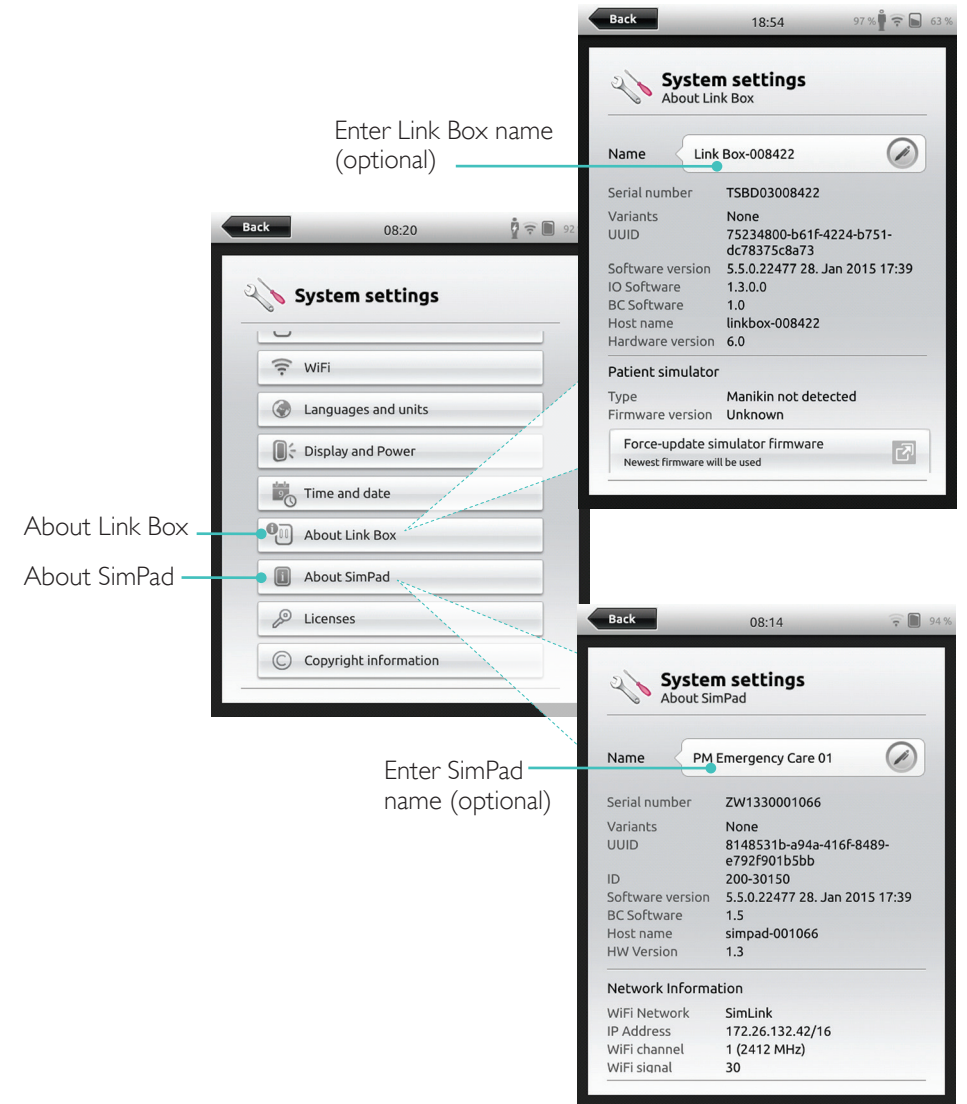
Starting for the First Time

Follow the on-screen prompts to configure the device.



Configuration

Configuration can only be done when the simulator, manikin or task trainer is connected to SimPad.



Note  
These configurations may be altered later.

### Starting for the First Time

Follow the on-screen prompts to configure the device.

**System settings - Languages and units**

- SimPad language: English
- Manikin voice language: English
- Celsius or Fahrenheit: Celsius
- etCO<sub>2</sub> unit: mmHg
- Country: United Kingdom

**System settings - Time and date**

- Country: United Kingdom
- Time zone: London (GMT+00:00)
- Set time automatically: On
- Time server settings
- Set time: 15:43
- Set date: 13. Dec 2015

**System settings - About SimPad**

- Name: SimPad
- Serial number: TSBF12001620
- ID: 204-30150
- Software version: 6.0.0-152
- Network Information: Host name: simpad-BF121620
- WiFi information: Network: SimLink, IP Address: 172.26.127.244/16
- LAN: IP Address

**System settings - About Simulator**

- Not connected to simulator
- Firmware version: Unknown
- Force-update simulator firmware: Newest firmware will be used
- Link Box: Name: Link Box-bf087823
- Serial number: TBBF08027823
- Software version: 6.0.0-72
- ID: 204-30250
- Variants: None
- UUID: 0472f280-f15a-49f6-8e02-45213fb0e94b
- IO Software: 1.5.0.17

Annotations:

- Select language (points to English in the first screenshot)
- SimPad language (points to the language selection area in the first screenshot)
- Choose country pre-select time zone (points to United Kingdom in the second screenshot)
- Enter SimPad name (Optional) (points to SimPad in the third screenshot)

### Configuration

Configuration can only be done when the simulator, manikin or task trainer is connected to SimPad PLUS.

**System settings - About Simulator**

- Not connected to simulator
- Firmware version: Unknown
- Force-update simulator firmware: Newest firmware will be used
- Link Box: Name: Link Box-bf087823
- Serial number: TBBF08027823
- Software version: 6.0.0-72
- ID: 204-30250
- Variants: None
- UUID: 0472f280-f15a-49f6-8e02-45213fb0e94b
- IO Software: 1.5.0.17

**System settings**

- WIFI: Connected to anne-guest, channel 36
- Flight Mode: Off
- Languages and units
- Display and Power
- Time and date
- About simulator
- About SimPad
- Debriefing server

**System settings - About SimPad**

- Name: SimPad
- Serial number: TBBF07001852
- ID: 204-30150
- Software version: 6.0.0-72
- HW Version: A
- Variants: None
- UUID: eb562fc5-638b-4e1c-8a79-5a002293c114
- Network Information: Host name: simpad-BF071852
- WiFi information: Network: SimLink

Annotations:

- Enter Link Box name (optional) (points to Link Box-bf087823 in the first screenshot)
- About Simulator (points to About simulator in the second screenshot)
- About SimPad (points to About SimPad in the second screenshot)
- Enter SimPad name (optional) (points to SimPad in the third screenshot)

Note

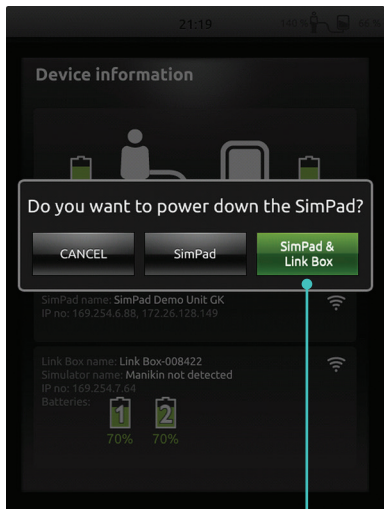
These configurations may be altered later.



Turn Off

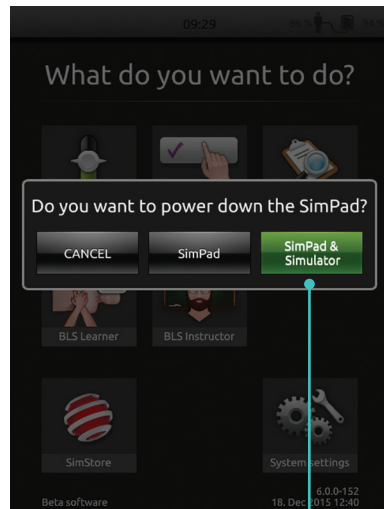


SimPad



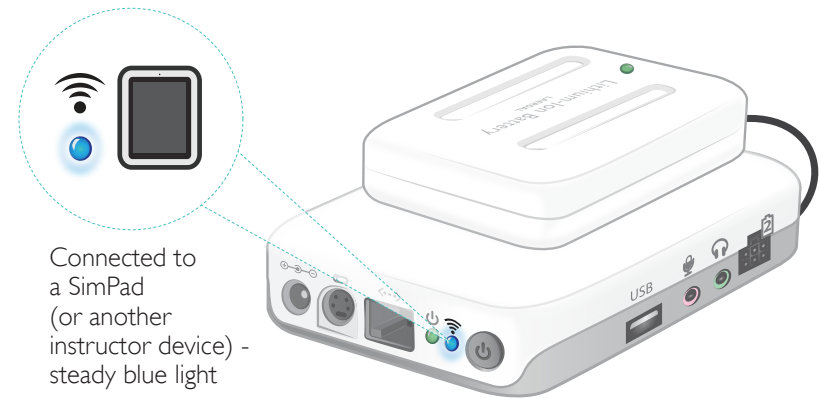
Tap to shutdown SimPad and/or Link Box

SimPad PLUS



Tap to shutdown SimPad and/or Simulator

WiFi Connection



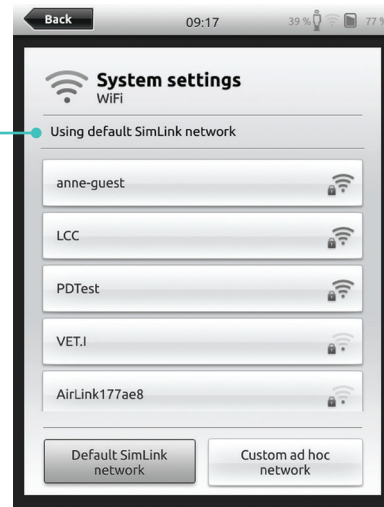
### Connection between SimPad and Link Box

SimPad communicates with the Link Box using WiFi.

SimPad



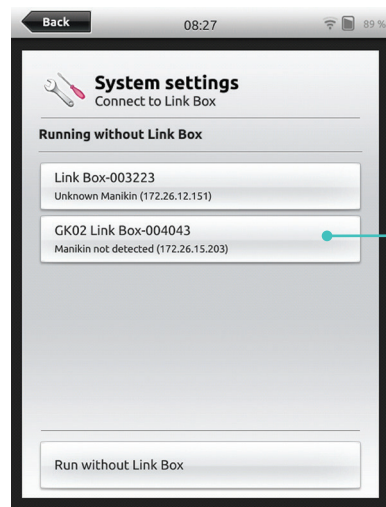
SimPad PLUS



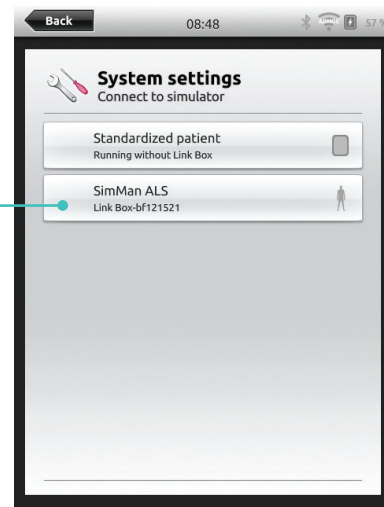
When the units are turned on for the first time they will set up an ad hoc network called SimLink

If no other Link Box is visible on the default SimLink network, the SimPad will automatically connect to the available one. This pairing is remembered and the units will reconnect when turned on again. When multiple Link Box/Simulator are available, choose the preferred option.

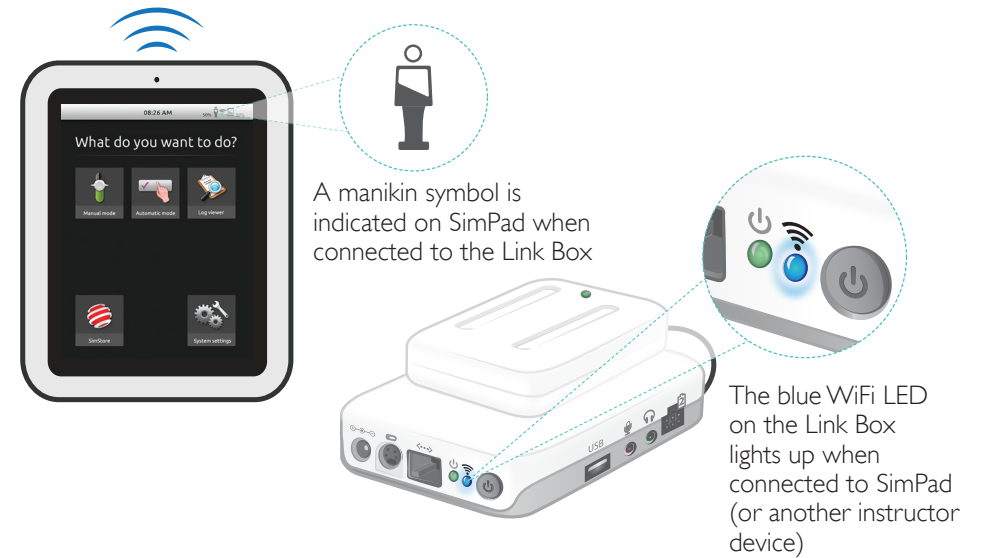
SimPad

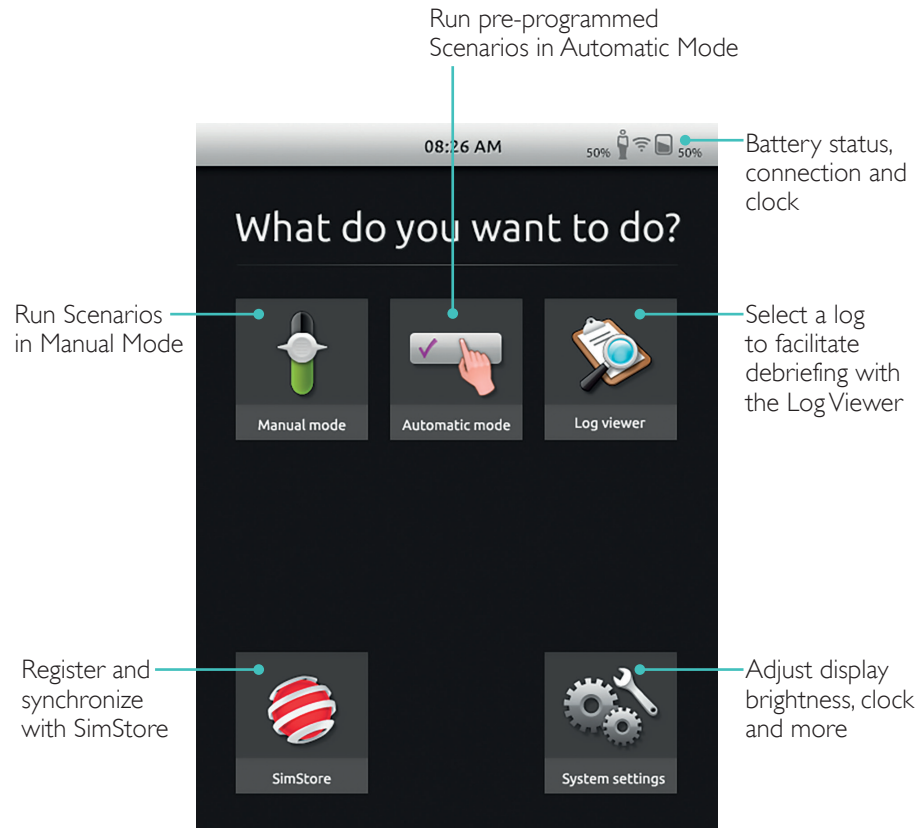


SimPad PLUS



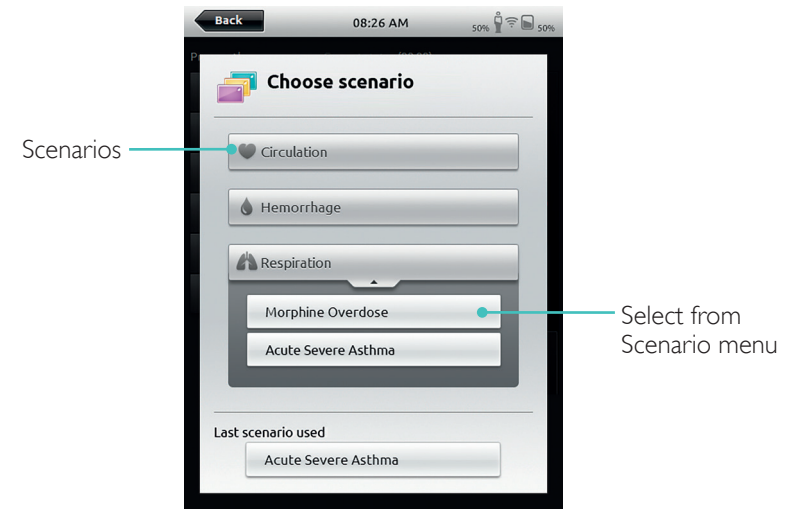
Select the appropriate Link Box/Simulator from the manikin connection menu



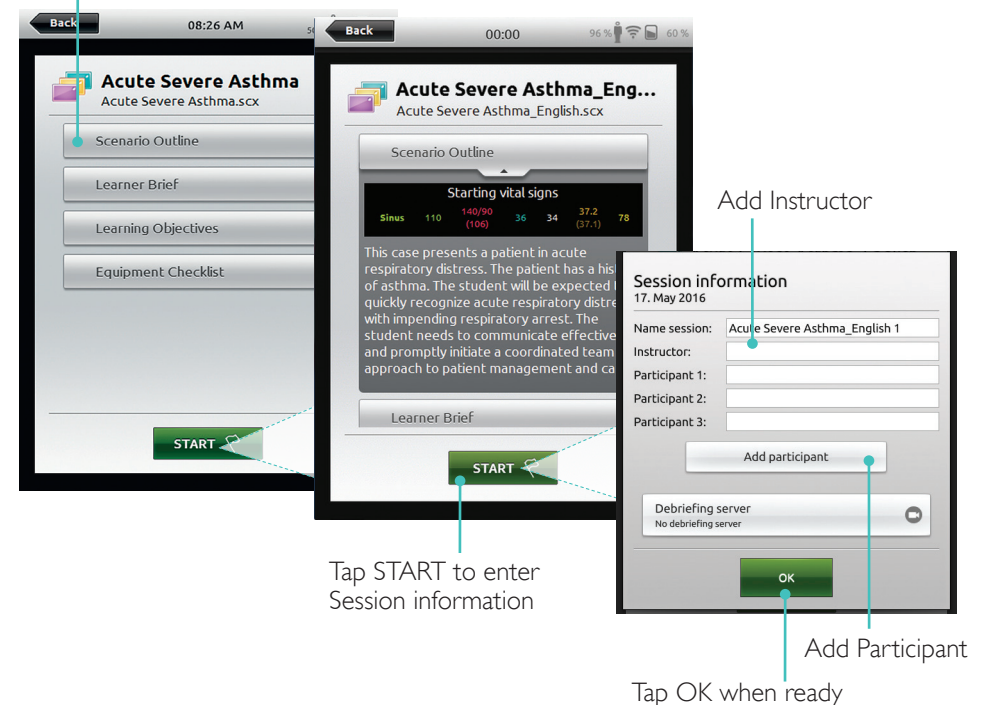


Home screen may vary in appearance based on purchased licenses.

Select Scenario



Tap for detailed information on Scenario



Run Session

Time since Scenario was started

Patient status

Categories of interventions

Tap to log interventions and events

Last logged event

Tap to add comment

| Correct treatment  | Related events             |
|--------------------|----------------------------|
| Wash hands 1       | Communicate with patient 1 |
| Identify patient 0 | Comfort patient 1          |
| Introduce self 1   | Communicate clearly 0      |
|                    | Communicate effectively 0  |

00:20 Communicate with patient

Change Parameters

Tap here to display more patient state information

Access to vital signs adjustments

Abnormal parameter values displayed here

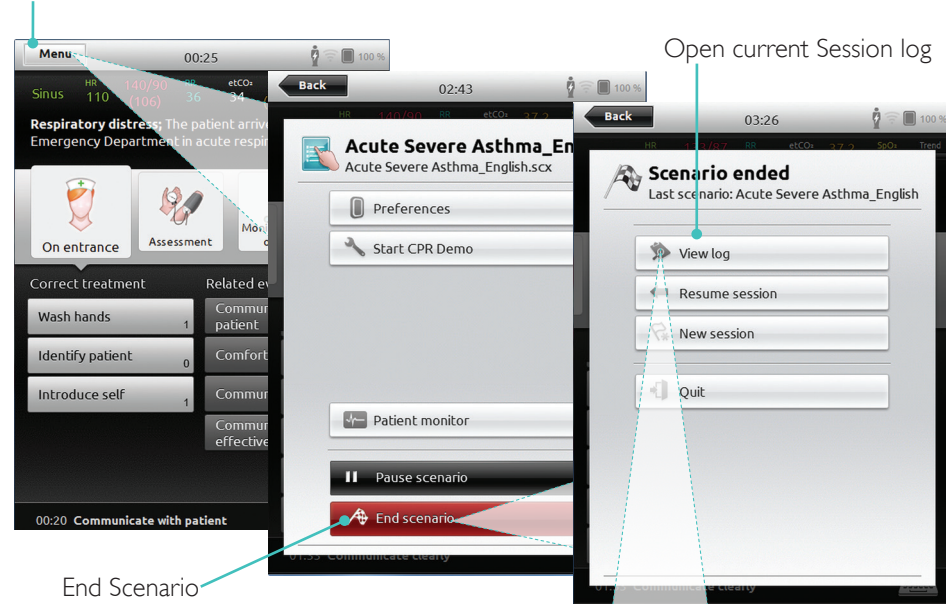
Select other parameters to adjust

01:33 Communicate clearly

PAUSE

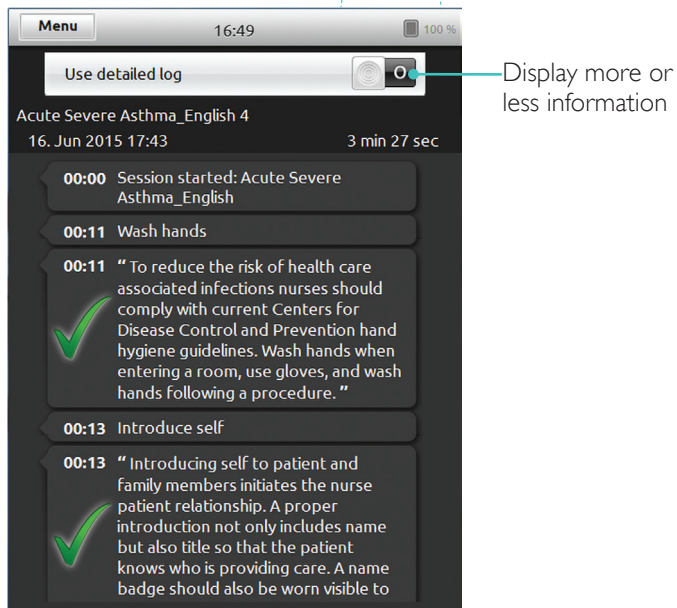
End Session

Tap menu to End Session



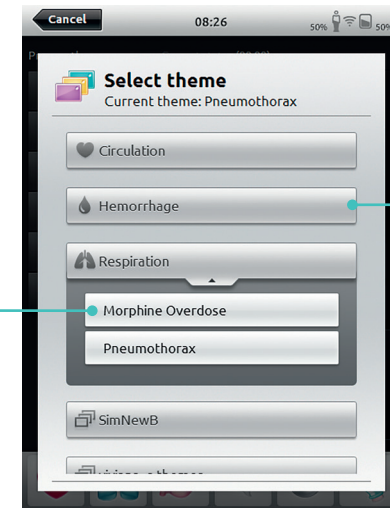
Open current Session log

End Scenario



Display more or less information

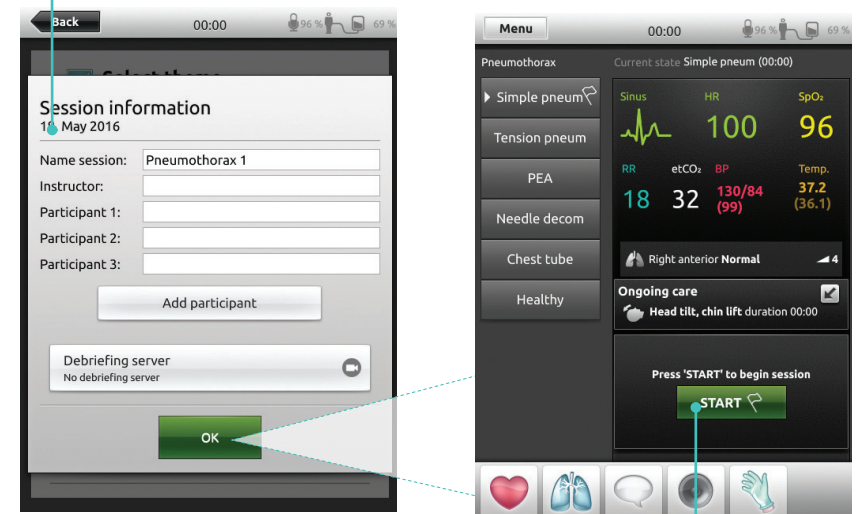
Select Theme



Select theme for simulation

Folder of themes Tap to open

Information about Session entered here will be added to log



Tap to start Session

Change Parameters

Current state  
States  
Flag indicates start state  
White arrow indicates last activated state  
Select other parameters to adjust  
Pause Session  
Toggle On/Off shock activation  
Time since current state was activated  
Patient vital signs  
Abnormal values  
Collapse mini-log  
End Session  
Register participant's interventions

00:37  
Pneumothorax  
Current state Simple pneum (00:37)  
Simple pneum  
Tension pneum  
PEA  
Needle decom  
Chest tube  
Healthy  
Sinus HR SpO<sub>2</sub>  
100 96  
RR etCO<sub>2</sub> BP Temp.  
18 32 130/84 37.2  
(99) (36.1)  
Right lung Normal  
00:00 Session started: Pneumo...  
PAUSE END

Time since Session started  
Tap to open State  
Tap to show detailed State information, before activating  
Set transition time  
The expanded state shows all parameters in the queue, ready to be activated  
Tap to activate State

01:40  
Menu  
Pneumothorax  
Current state Simple pneum (01:40)  
Simple pneum  
Tension pneum  
PEA  
Needle decom  
Chest tube  
Healthy  
Sinus HR  
100  
RR etCO<sub>2</sub> BP  
18 32 130/84  
(99) (36.1)  
Right lung Normal  
00:00 Session started: P  
PAUSE  
Chest tube  
5:00  
Sinus HR  
100  
14 30  
122/76 37.2  
(91) (36.1)  
98  
ACTIVATE ✓

Registering Interventions

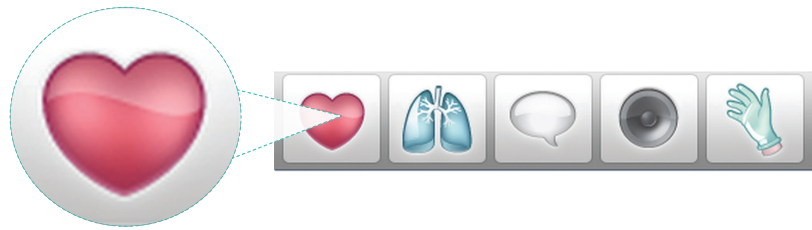
Tap to register participant's interventions

00:15  
Back  
Patient status  
Sinus HR 100 130/84 RR 18 etCO<sub>2</sub> 32 SpO<sub>2</sub> 96  
(99) (36.1)  
Initial Airway Breathing Circula  
Categories of interventions  
Tap to log interventions and events  
Initial CRM Skills  
Talk to patient Effective communication  
Tap and shout Team leadership  
Call for help Resource utilization  
Problem-solving  
Closed-loop communication  
Situational awareness  
Last logged event 00:12 Situational awareness  
Tap to add comment

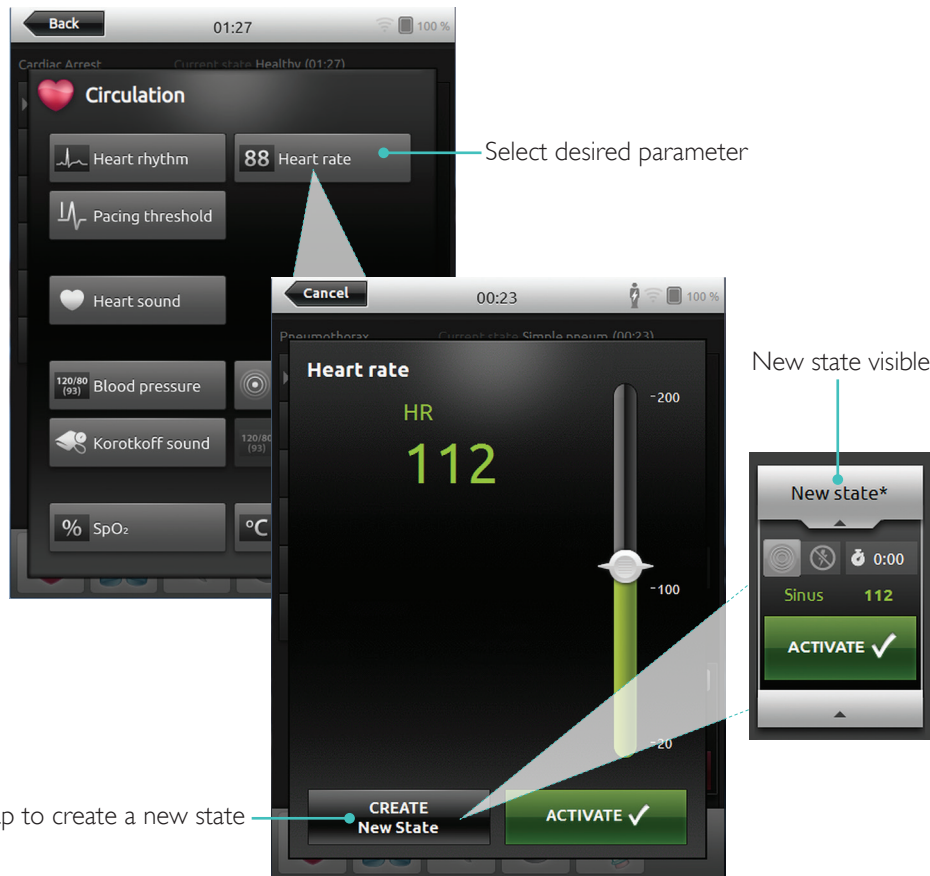
Time since Scenario was started  
Patient status  
Tap to log interventions and events  
Categories of interventions  
Initial CRM Skills  
Talk to patient Effective communication  
Tap and shout Team leadership  
Call for help Resource utilization  
Problem-solving  
Closed-loop communication  
Situational awareness  
Last logged event  
Tap to add comment

00:15  
Back  
Sinus HR 100 130/84 RR 18 etCO<sub>2</sub> 32 SpO<sub>2</sub> 96  
(99) (36.1)  
Initial Airway Breathing Circula  
Categories of interventions  
Initial CRM Skills  
Talk to patient Effective communication  
Tap and shout Team leadership  
Call for help Resource utilization  
Problem-solving  
Closed-loop communication  
Situational awareness  
Last logged event 00:12 Situational awareness  
Tap to add comment

### Create New State for an Existing Theme



Tap to access Circulation Menu



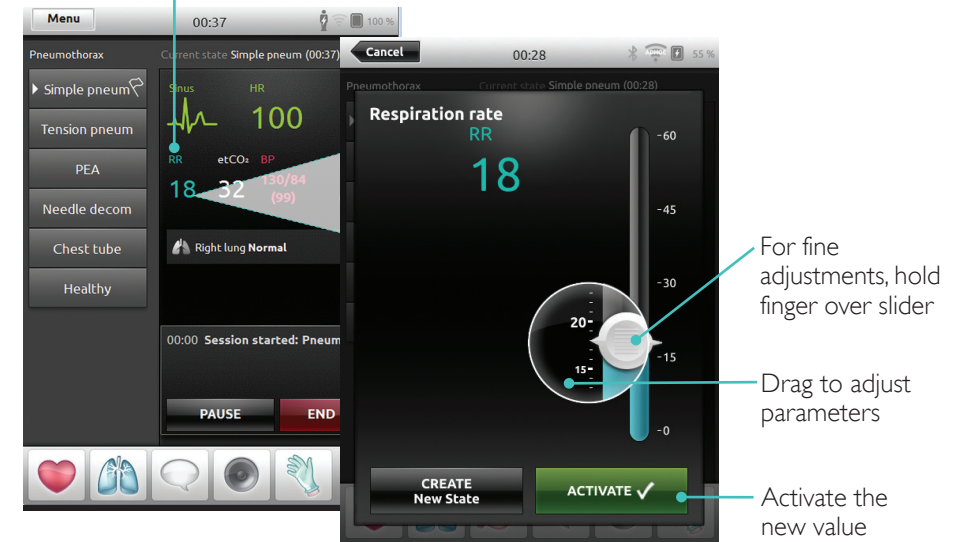
Select desired parameter

New state visible

Tap to create a new state

### Adjust Parameters Manually

Tap to adjust values (e.g. respiration rate)



For fine adjustments, hold finger over slider

Drag to adjust parameters

Activate the new value

### Advanced Adjustments



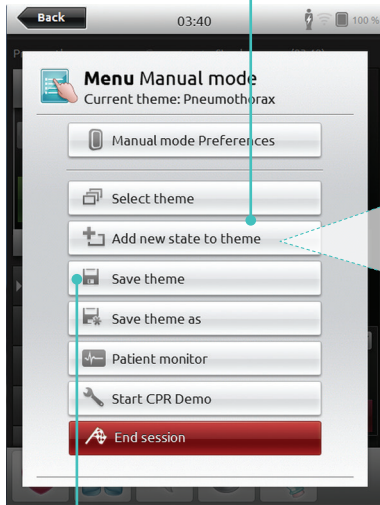
Tap to set desired condition

Select a parameter from the menu

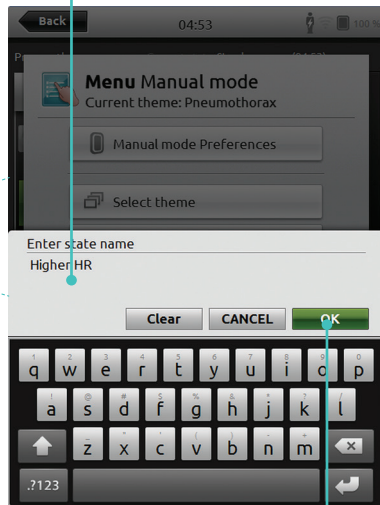
Update the currently open state

### Add New State to an Existing Theme

1. Tap to add new state to theme

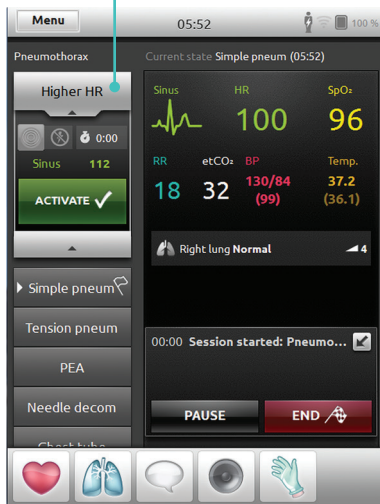


2. Enter new state name



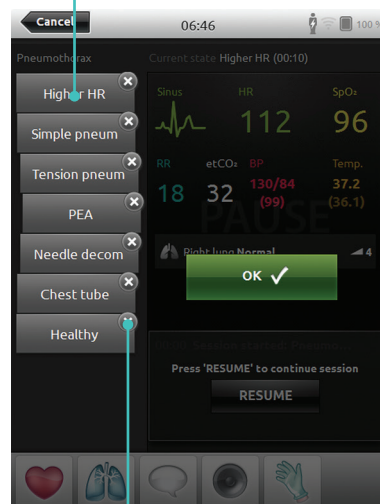
4. Tap to save state to theme

New state is now ready



3. Confirm

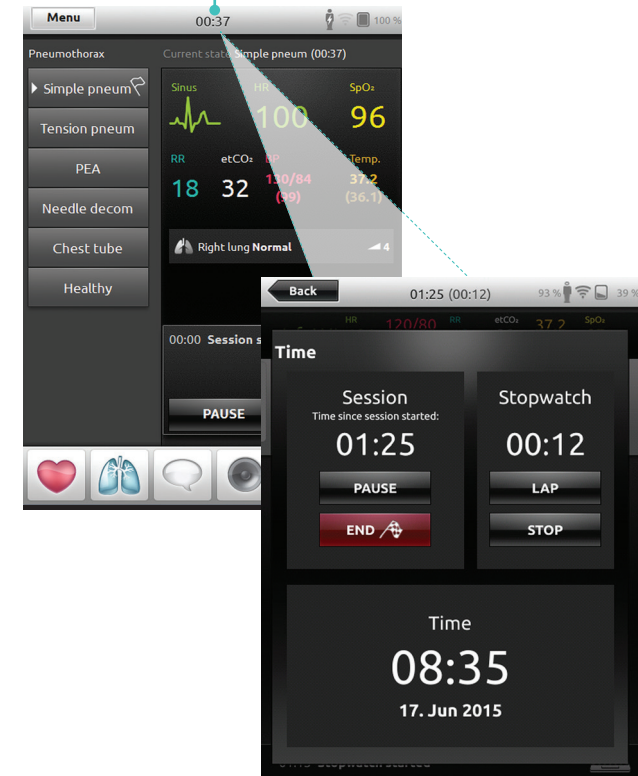
Tap and hold to arrange states



Tap x to delete

### Stopwatch

Tap to display and activate the Stopwatch





View Log

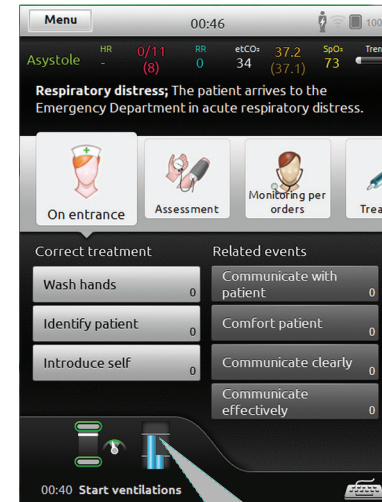


QCPR Feedback

When CPR is performed on a CPR capable manikin, SimPad displays real time CPR feedback.

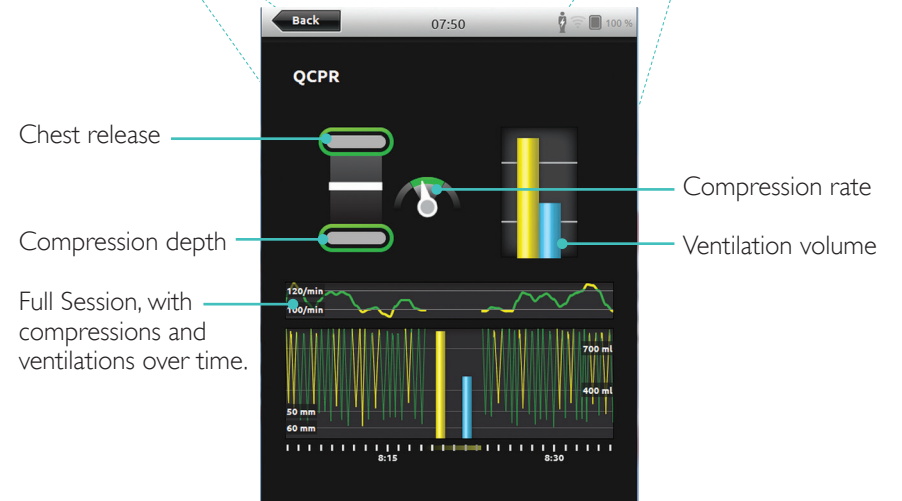
Automatic Mode -

Tap to enlarge QCPR feedback



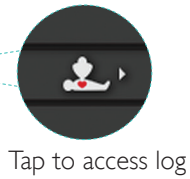
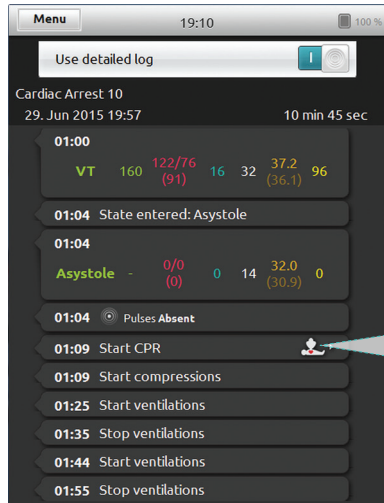
Manual Mode -

Tap to enlarge QCPR feedback

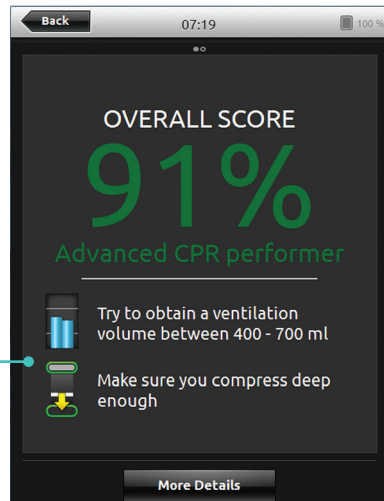


Q CPR Log File

Debriefing mode provides an additional log file with data from CPR training.

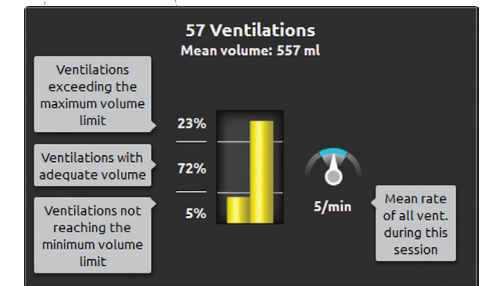
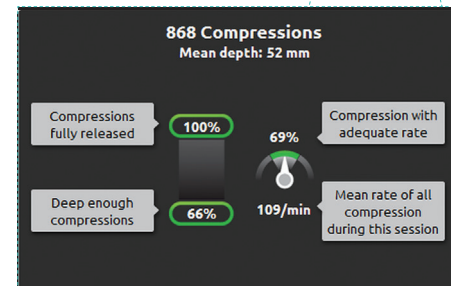
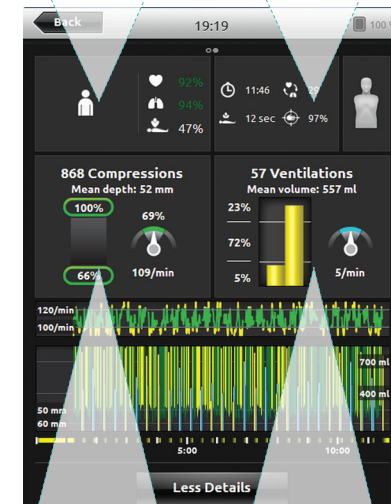
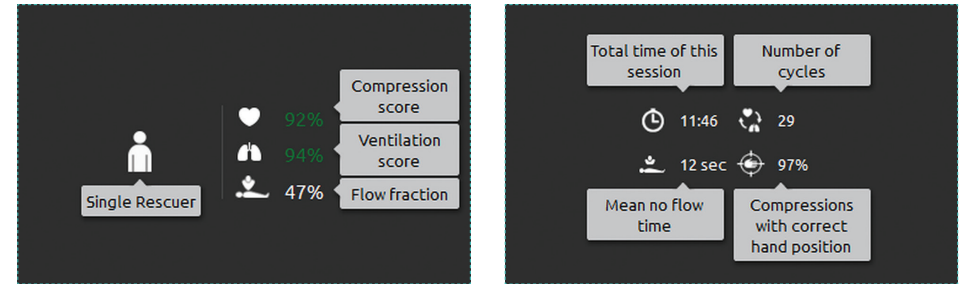


Tap to access log



Indicates two main findings from the CPR performance

Q CPR Summary



Compression Analysis Over Time



CPR settings can be adjusted to individual needs. Laerdal recommends using settings compliant with ILCOR guidelines.

Display Choices



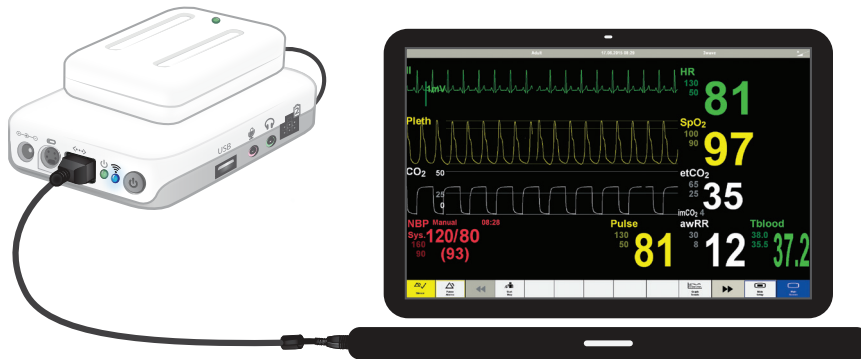
With overall score

Without overall score

## Connect a Simulated Patient Monitor

Ensure the Simulated Patient Monitor PC and the SimPad System are connected to the same network.

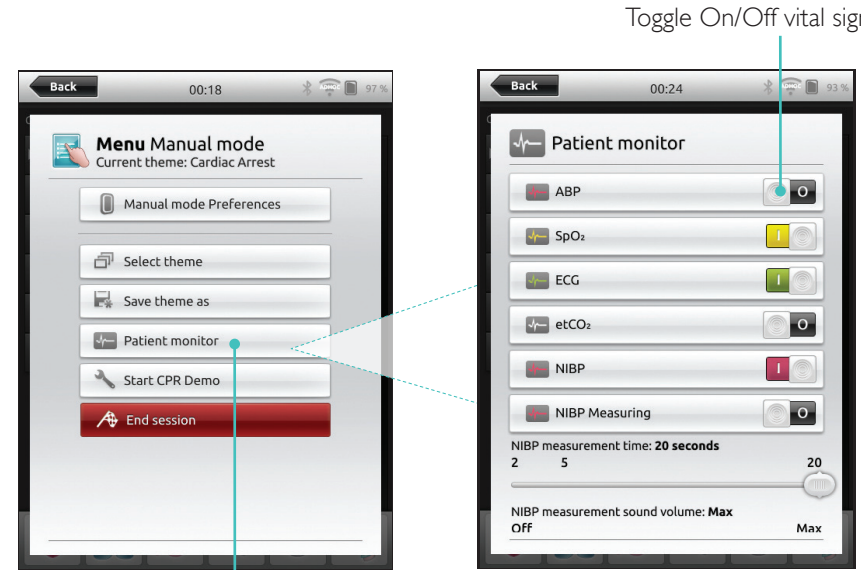
Refer to Network section for more information about other network connections.



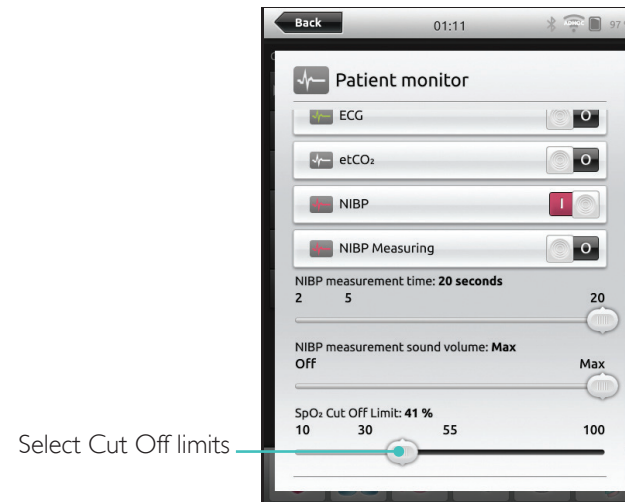
Using a direct network cable to connect the Link Box to the Simulated Patient Monitor is recommended to minimize WiFi traffic.

## Instructor Control of Simulated Patient Monitor

When the Simulated Patient Monitor (optional item) is connected to SimPad, the instructor can toggle the display of vital signs. Navigate to manual mode and select Patient Monitor:



Navigate to menu and select Patient Monitor



Select Cut Off limits

### Patient Simulator Firmware Update

When Link Box is connected to a Patient Simulator with internal firmware it will be automatically updated, if necessary.

If an automatic update is interrupted, a forced update is necessary.

**⚠ Caution**

Ensure that the correct Simulator is selected. Selecting the wrong simulator may cause malfunction and require service.

### SimPad

From Home Screen, go to:  
System Settings > About Link Box > Force-update simulator firmware.

### SimPad PLUS

From Home Screen, go to:  
System Settings>About simulator>Force-update simulator firmware.

### Session Viewer

Session Viewer is a free software solution that enables instructors or students to view debriefing from the SimPad System. Use Session Viewer to annotate, print and save the SimPad data log. Session Viewer also enables capture of audio and video from 1 HD USB web camera synchronized with the SimPad data log.

To download, visit [www.laerdal.com/downloads](http://www.laerdal.com/downloads)

### Connect SimPad to a different Link Box

SimPad can only be connected to one Link Box at a time. SimPad will try to re-establish a connection to any previous Link Box that it was connected to.



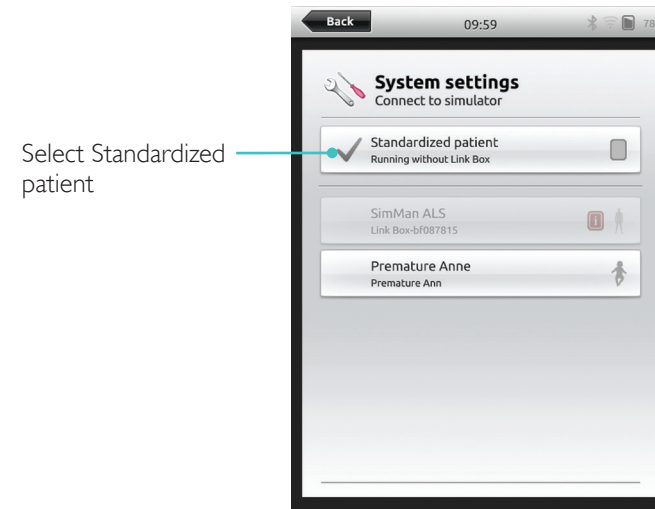
### Connect SimPad PLUS to a different Link Box PLUS

SimPad PLUS can only be connected to one simulator at a time. SimPad PLUS will try to re-establish a connection to the previous Link Box PLUS that it was connected to.



### Use SimPad PLUS without a Link Box PLUS

SimPad PLUS can be used with a standardized patient without connecting to the Link Box PLUS.



### Bluetooth

SimPad PLUS can also connect to bluetooth enabled simulators.



## Connect to a Network

All models of SimPad and Link Box are connected via SimLink (ad hoc network) by default.

They can also be connected in the following ways:

- Using a standard network cable
- On a wired ethernet network
- On a WiFi network

### Using a Standard Network Cable



## Connect to Wired Ethernet Network

**Note**

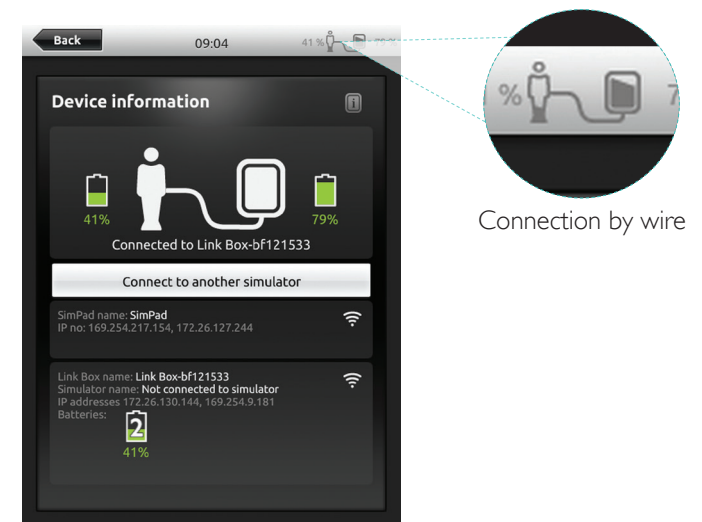
*It is possible to be on a wired network and a WiFi network simultaneously.*

Connect SimPad and Link Box to network outlets. The network needs to have DHCP service.

### SimPad



### SimPad PLUS



Connect to a WiFi Network



**Note**  
 Before moving Link Box to another WiFi network, ensure it is connected to SimPad with a network cable.

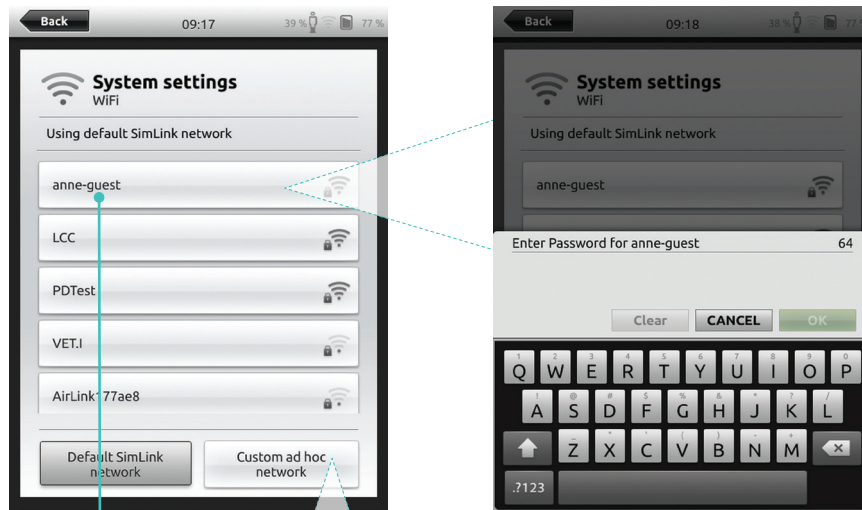
Connect to a WiFi Network



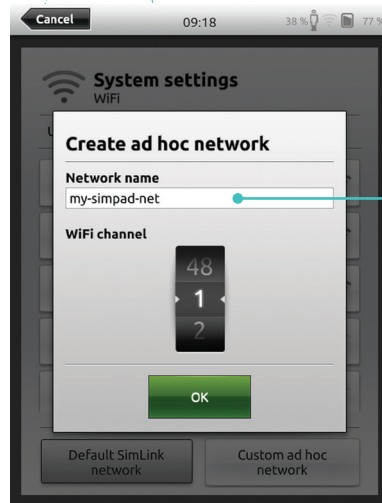
**Note**  
 Before moving Link Box PLUS to another WiFi network, ensure it is connected to SimPad PLUS with a network cable.



Connect to Another Network



Select the desired WiFi network from the list and enter the network password



Any other ad-hoc network can be created (optional)

SimStore is the place to find peer validated content to standardize your simulation education. Unlock the full potential of SimPad manikins, education staff and students.

SimStore offers pre-programmed content mapped to clinical guidelines and developed by industry-leading experts. Reducing on-the-fly operation and using pre-programmed scenarios can help present a more realistic clinical encounter and increase the simulation investment.

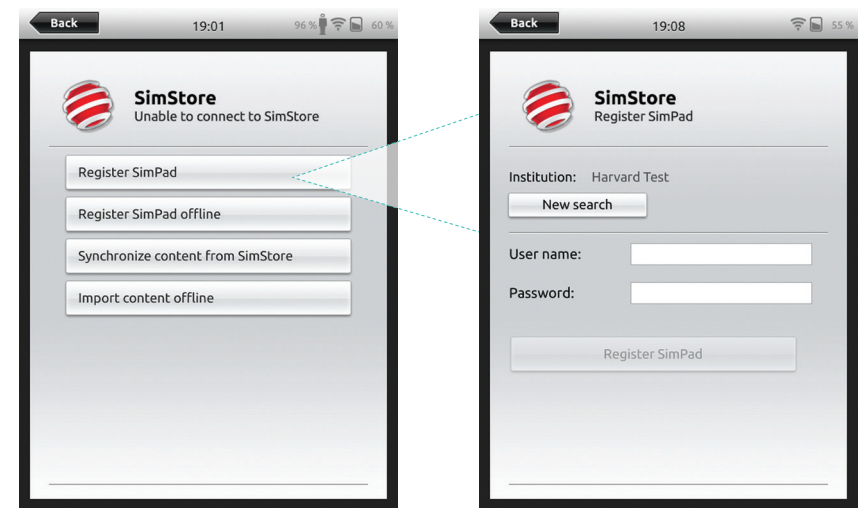
To access, visit [www.mysimcenter.com](http://www.mysimcenter.com)

Visit SimStore to find:

- Immediate online access to world wide, validated content
- Standardized and repeatable training measures
- Easy search, find, and pay navigation
- Flexibility to purchase only what is required

Register SimPad on SimStore

SimPad needs to be connected to a network in order to register with SimStore online. See *Network* section.

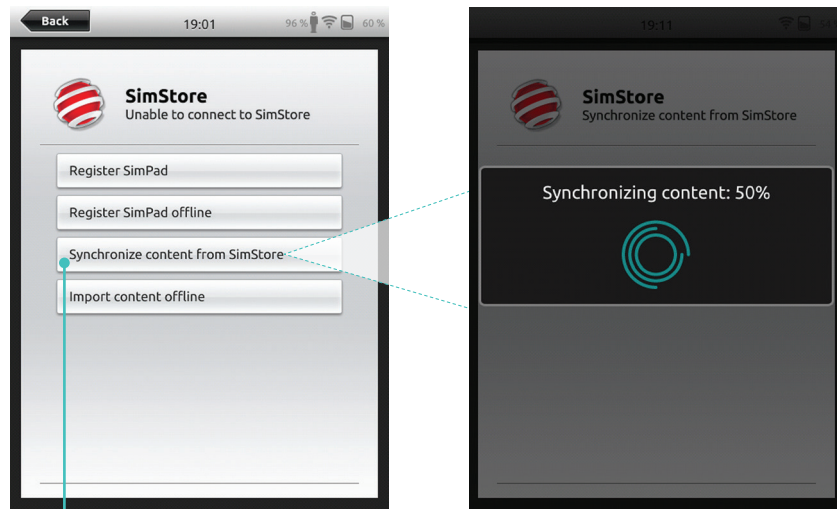


SimPad can also be registered offline. A device key will be generated. Register the device from a PC.



### Synchronize SimPad with SimStore

After SimPad has been registered on SimStore, administration of SimStore content for SimPad and purchasing Scenarios on SimStore must be done from a PC.



Synchronize content from SimStore

For more information visit [www.mysimcenter.com](http://www.mysimcenter.com)

### Theme Editor

Theme Editor creates new themes with states and interventions for the SimPad System. Theme Editor can be downloaded from [www.laerdal.com/themeditor/](http://www.laerdal.com/themeditor/) and be used offline.



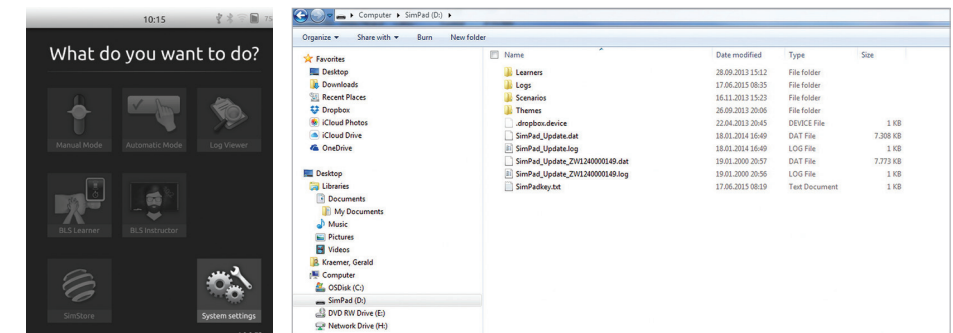
Note  
Theme Editor will only be accessible using Internet Explorer.

### SimDesigner

SimDesigner creates new scenarios with states and interventions for the SimPad System. SimDesigner can be downloaded from [www.laerdal.com/SimPad](http://www.laerdal.com/SimPad).

### Transferring Logs, Themes and Scenarios to and from a PC

Connect SimPad to the PC using the included USB cable.



- Save new Scenarios in the Scenarios folder.
- Save new Themes in the Themes folder.
- Upload logs from the Logs folder.
- To safely disconnect SimPad, right click the SimPad drive and select Eject before removing the USB cable.



Note  
If SimPad is turned off, the battery can be charged from the USB connection.

### Headset

Create two-way communication between the operator and simulator by connecting a headset.

Plug headset into SimPad

The headset microphone will be routed to the manikin



- █ = From instructor to manikin
- █ = From manikin (separate microphone) to instructor.

**Note**

- The headset output on the Link Box duplicates the sound to the manikin. It can be used to improve the sound by adding additional speakers around the manikin.
- Some simulators have an internal microphone, and don't require a Link Box setup.

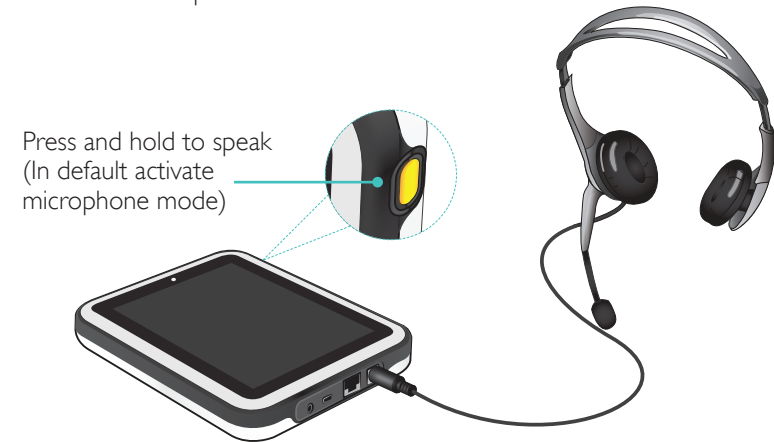
### Vocal Sounds

Vocal sounds from the Patient Simulator such as crying, moaning etc. can be activated from the SimPad directly or via Themes and Scenarios.

For more information about vocal sounds and to create user defined vocal sounds see *Feature* section.

### Auxiliary Button

The Auxiliary Button can be configured in Manual Mode or Automatic Mode preferences to enable and disable input from the headset.



**Note**

When the device is used wirelessly there will be a short voice delay.

Configure the Auxiliary Button

Press and hold to speak

Press and hold to mute

Return to Session Overview

Connect Two Laerdal Li-Ion Batteries



Connect Two Laerdal Li-Ion Batteries



50% 50%

Tap to view Device information

Batteries are discharged in parallel

Link Box name: Bob  
Simulator name: MegaCode Kelly Advanced  
IP no: 172.56.254.1  
Battery:   
50% 50%

Remaining battery capacity

44% 53%

Tap to view Device information

Batteries are discharged independently

Device information

44% 53%

Connected to Link Box-bf108306

Connect to another simulator

SimPad name: SimPad  
IP no: 10.183.40.89, 10.184.35.25

Link Box name: Link Box-bf108306  
Simulator name: MegaCode Kelly Advanced  
IP addresses 10.183.40.90, 10.184.35.27  
Batteries:   
4% 40%

Remaining battery capacity

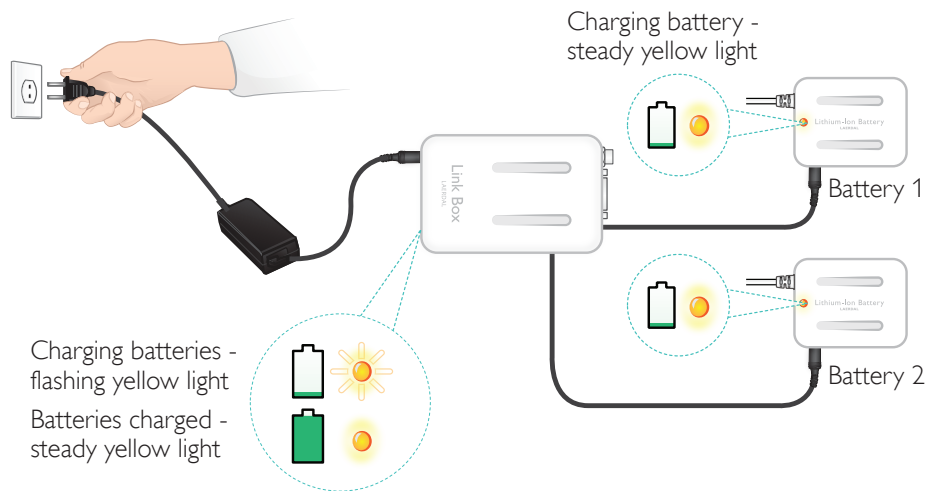
### Charge Batteries

The batteries can be charged through the Link Box when the power is turned off and the Link Box is connected to the AC adapter.

**Note**

The AC Adapter can only be used with SimPad or SimPad PLUS and Link Box or Link Box PLUS.

For more information about Charging Batteries see *Quick Setup Guide*.



**Warnings**

- Do not use the Laerdal Li-Ion Battery for other purposes than specified.
- Use only the AC charger adapter supplied with the product.
- Do not use the battery in temperatures above what is specified in this User Guide or Important Product Information.
- Do not heat or incinerate.
- Do not crush the battery.
- Do not short circuit the battery contact.
- Do not immerse in water.
- The battery must be recycled and disposed of in accordance with local rules.
- Do not handle damaged or leaking Li-Ion batteries.

The available rhythms and rhythm parameters may vary from simulator to simulator.

### Available ECG in SimPad System

| Basic Rhythms                     | Rates Adult and Child | Rates Infant  | Extra-systoles                            |
|-----------------------------------|-----------------------|---------------|---|
| Sinus                             | 20 – 200              | 20 – 240      | PVC<br>PVC RonT<br>Couplet PVC<br>PAC/PJC |
| WPW                               | 20 – 200              | 20 – 240      |   |
| Hyperkalemia                      | 20 – 200              | 20 – 240      |   |
| Long QT                           | 20 – 200              | 20 – 240      |   |
| Ischemia                          | 20 – 200              | 20 – 240      |   |
| Inferior AMI, ST elevation        | 20 – 200              | 20 – 240      |   |
| Left Bundle Branch Block (LBBB)   | 20 – 200              | 20 – 240      |   |
| Righth Bundle Branch Block (RBBB) | 20 – 200              | 20 – 240      |   |
| Atrial Tachycardia (Atrach.)      | 140 – 260             | 90 – 320      |   |
| Supra Vent. Tachycardia (SVT)     | 140 – 260             | 90 – 320      |   |
| Atrial Flutter                    | 75, 100, 150          | 75, 100, 150  | PVC<br>PVC RonT<br>Couplet PVC<br>PAC/PJC |
| Atrial Fibrillation (AFib.)       | 50 – 240              | 50 – 240      |   |
| Junctional                        | 40 – 220              | 40 – 220      |   |
| 1° AV-Block                       | 20 – 135              | 20 – 135      |   |
| 2° AV Block type #1               | 3:2,4:3, 5:4          | 3:2,4:3, 5:4  |   |
| 2° AV Block type #2               | 4:3, 3:2, 2:1         | 4:3, 3:2, 2:1 |   |
| 3° AV Block                       | 10 – 50               | 20 – 100      |   |
| Ventricular Tachycardia (VT)      | 120 – 240             | 120 – 320     |   |
| Torsade de pointes                | 180                   | 180           |   |
| Idioventricular                   | 10 – 100              | 14 – 100      |   |
| Ventricular Fibrillation (VF)     | 0.1 – 1 mV            | 0.1 – 1 mV    |   |
| Asystole                          |                       |               |   |
| Ventricular Standstill            |                       |               |   |
| Ventricular Pacemaker             | 50 – 150              | 50 – 150      |   |

## Blood Pressure

| Blood Pressure                 |  |               |                                       |
|--------------------------------|--|---------------|---------------------------------------|
| Pressure range                 | Systolic: 0-300 mmHg / Diastolic 0-200 mmHg  |               |                                       |
| Accuracy                       | +/- 4 mmHg   |               |                                       |
| Calibration                    | Pressure sensor must be calibrated to sphygmomanometer. See Preferences menu.  |               |                                       |
| Pulse                          |  |               |                                       |
| Available pulses               | Carotid, Brachial, Radial and Umbilical (SimNewB)<br>Only 3 pulses can be palpated simultaneously. (Power considerations).       |               |                                       |
| Palpated BP                    | Radial pulse turns off at systolic BP.<br>Brachial pulse turns off at 20 mmHg, to prevent noise generation in auscultation area. |               |                                       |
| Default                        | Adult Manikin  | Child Manikin | Infant Manikin                        |
| Default Blood Pressures (mmHg) | 120/80   | 100/70        | 94/66 (SimPad)<br>60/40 (SimPad PLUS) |

Adult pulses are automatically adjusted to BP as follows:

| Systolic BP | Carotid Pulse | Radial/Brachial Pulse |
|-------------|---------------|-----------------------|
| >= 88       | Normal        | Normal                |
| < 88        | Normal        | Weak                  |
| < 80        | Normal        | Absent                |
| < 70        | Weak          | Absent                |
| < 60        | Absent        | Absent                |

Infant pulses are automatically set to absent when Systolic BP is below 10 mm Hg. Otherwise infant pulses are normal.

Adult pulses are automatically adjusted to BP as follows:

| Systolic BP | Carotid Pulse | Radial/Brachial Pulse |
|-------------|---------------|-----------------------|
| >= 88       | Normal        | Normal                |
| < 88        | Normal        | Weak                  |
| < 80        | Normal        | Absent                |
| < 70        | Weak          | Absent                |
| < 60        | Absent        | Absent                |

## Heart Sounds

Heart sounds are synchronized to ECG.

| Heart Sounds                    | Adult Manikin | Child Manikin | Infant Manikin |
|---------------------------------|---------------|---------------|----------------|
| Normal                          | •             | •             | •              |
| Aortic Stenosis                 | •             | •             | •              |
| Austin Flint Murmur             | •             | •             | •              |
| Mitral Valve Prolapse           | •             | •             |                |
| Systolic Murmur                 | •             | •             | •              |
| Diastolic Murmur                | •             |               |                |
| Friction Rub                    | •             |               |                |
| Opening Snap @70 msec           | •             |               |                |
| Stills Murmur                   |               | •             | •              |
| Atrial Septal Defect (ASD)      |               | •             | •              |
| Ventricular Septal Defect (VSD) |               | •             | •              |
| Pulmonary Stenosis              |               |               | •              |

## Lung Sounds

Lung sounds are synchronized to breathing rates, adjustable from 0 – 60 breaths per minute.

| Lung sounds          | Adult Manikin | Child Manikin | Infant Manikin |
|----------------------|---------------|---------------|----------------|
| Normal Breath Sounds | •             | •             | •              |
| Fine Crackles        | •             | •             | •              |
| Coarse Crackles      | •             | •             | •              |
| Pneumonia            | •             | •             | •              |
| Wheeze               | •             | •             | •              |
| Stridor              | •             | •             | •              |
| Pleural Rub          | •             |               |                |
| Rhonchi              | •             | •             | •              |

## Features

---

### Bowel Sounds

| Bowel sounds         | Adult Male | Adult Female | Child Manikin | Infant Manikin |
|----------------------|------------|--------------|---------------|----------------|
| Normal               | •          | •            | •             | •              |
| Borborygmus          | •          | •            | •             | •              |
| Hyperactive          | •          | •            | •             | •              |
| Hypoactive           | •          | •            | •             | •              |
| Fetal Normal 140 BPM |            | •            |               |                |
| Fetal Brady 100 BPM  |            | •            |               |                |
| Fetal Tachy 200 BPM  |            | •            |               |                |
| No sound             | •          | •            | •             | •              |

### Vocal Sounds

Vocal sounds are adjusted for age and gender of manikin.

| Male Manikin  | Female Manikin | Child Manikin | Infant Manikin |
|---------------|----------------|---------------|----------------|
| Vomit         | Vomit          | Vomit         | Cry            |
| Cough         | Cough          | Cough         | Cough          |
| Moan          | Moan           | Moan          | Content        |
| SOB Breathing | SOB Breathing  | SOB Breathing | Hiccups        |
| Scream        | Scream         | Scream        | Scream         |
| Yes           | Yes            | Yes           |                |
| No            | No             | No            |                |

User defined vocal sounds can replace the included vocal sounds.

Sound format for user defined sound files must be raw format 16KHz, 16 bits signed, little endian.





© 2016 Laerdal Medical AS. All rights reserved.

20-05299 Rev D

[www.laerdal.com](http://www.laerdal.com)



**Laerdal**  
helping save lives