



STREAMLINE EVIDENCE COLLECTION. INCREASE EFFICIENCY. FREE UP RESOURCES.

COMMANDCENTRAL VAULT
DIGITAL EVIDENCE MANAGEMENT

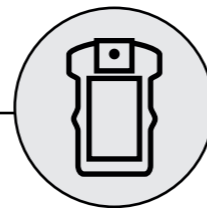
The volume of digital evidence that your teams have to handle keeps increasing. Body-worn cameras, dash cameras, camera apps, mobile footage, interviews – the list grows. In a typical prosecution police have to manually search up to five separate archival systems – one for each type of media, each with its own process. The administrative burden is overwhelming, which means officers spending less time on the beat protecting the community.



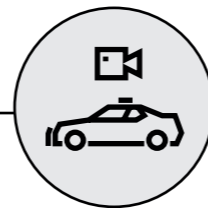
This growing volume of digital information needs to be managed efficiently to enable effective investigation and prosecution. That's why we created our integrated digital evidence management system, CommandCentral Vault. It allows you to manage, analyse, securely receive and share digital information with other agencies from any source. This digital evidence can be used for investigative purposes and then made available to judicial partners.

CommandCentral Vault is completely source agnostic, meaning it can handle informational input from any evidence-recording system. This includes body-worn video from both the police and their partners, dash cameras, cyclist head cameras, camera apps, audio, video and text from

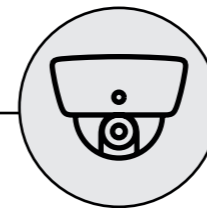
mobile phones and media from both police helicopters and drones. You can even store incident-related video, such as CCTV footage from a number of sources including police cells, council, transport, university and private CCTV. This, and all your digital evidence, can be tagged and held on the CommandCentral Vault. An investigating officer reviewing Media will immediately see all related material. We designed it to help keep the public safe, to improve operational capacity and, ultimately, to strengthen community safety and trust through improved evidence collection and offender prosecution.



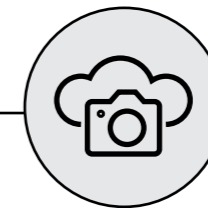
BODY WORN CAMERA



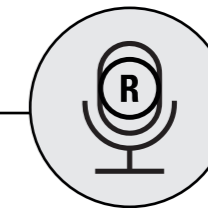
DASH CAMERA



CCTV



EVIDENCE APPLICATIONS



INTERVIEW RECORDING

Motorola Solutions also offers a complete, end-to-end digital evidence system via an innovative portfolio of technology that enhances front-line evidence capture and accountability.

COMMANDCENTRAL VAULT DIGITAL EVIDENCE MANAGEMENT SYSTEM

QUICKLY COLLECT AND DISTRIBUTE EVIDENCE FROM ANY SOURCE

Command Central Vault combines all of your digital evidence management workflows together into a single system.



DIGITAL EVIDENCE MANAGEMENT SOFTWARE

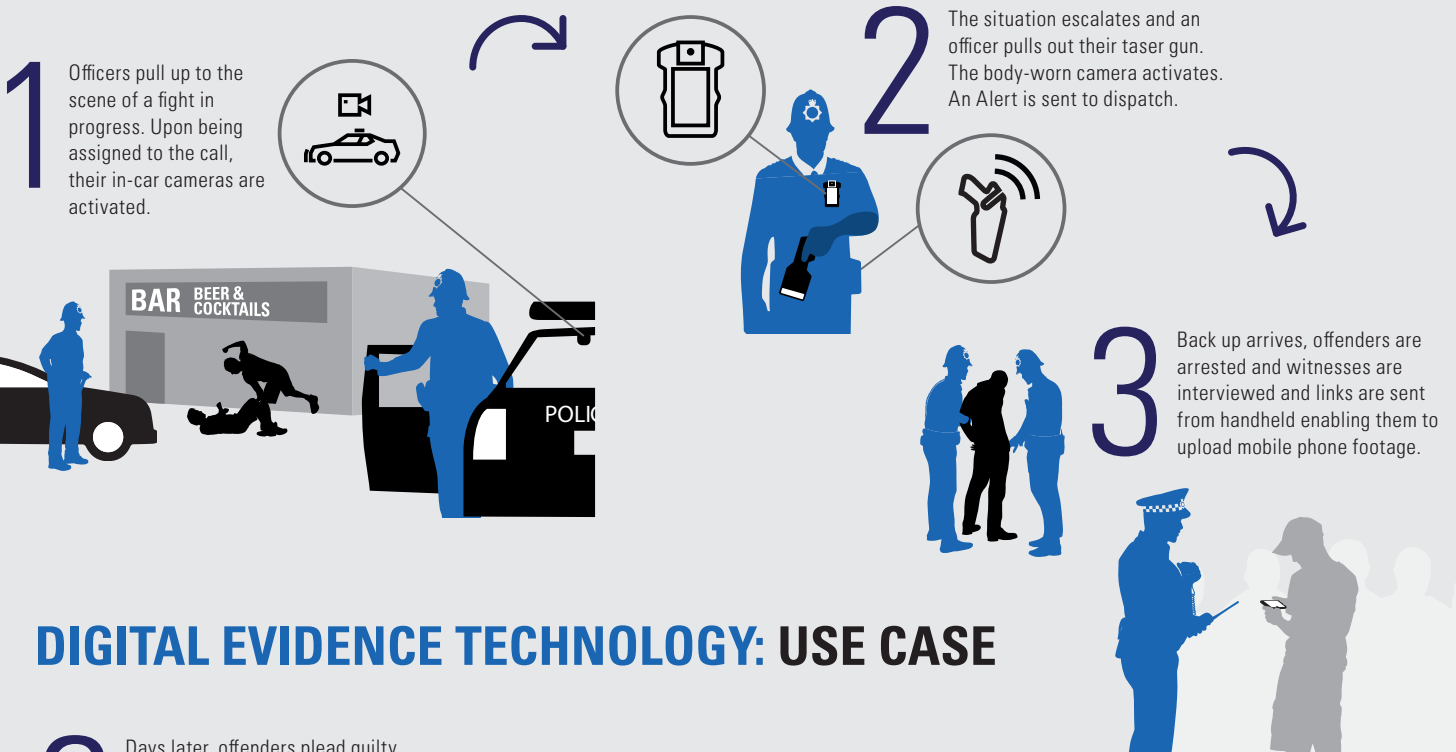


This single, unified storage space will provide you with the confidence to effectively – and securely – manage an ever-increasing amount of content. It's designed to accept input from any existing evidence capture system, reducing administrative work and ensuring that evidence can be found and prepared quickly when it's needed most, so you can keep your people and cases moving. Your organisation benefits from:

- Fully standards-compliant security to safeguard the integrity of your data
- Source-agnostic cloud storage to reduce storage costs and break down silos

- An integrated workflow that supports Google type search, incident recreation and external file sharing
- Eliminating the tedious, frame-by-frame, manual redaction process and replacing it with automated, object-based redaction
- Verifiable chain of custody to help with admissibility of digital evidence
- Tag-based retention logic to minimize the manual effort needed to purge content with rules created by your agency's policy

- The ability to tag video evidence with CAD and records management data
- Automatic correlation of CAD incident data with video data upon upload

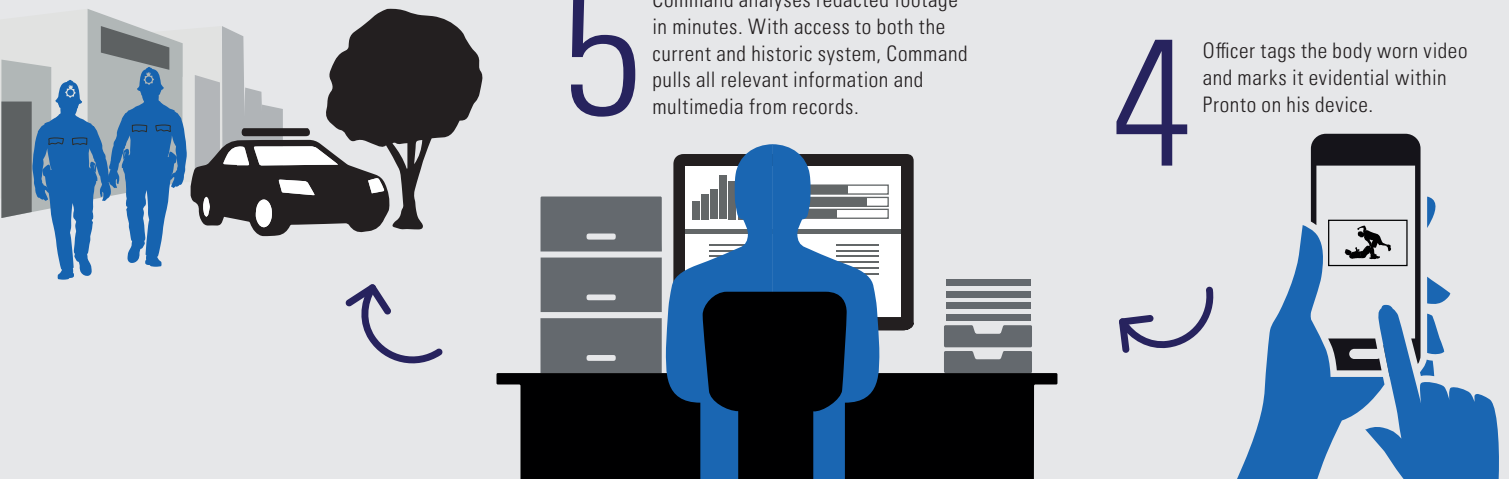


DIGITAL EVIDENCE TECHNOLOGY: USE CASE

6 Days later, offenders plead guilty after being presented with compelling video evidence. The officers avoid the need to attend court and are out protecting their community.

5 Command analyses redacted footage in minutes. With access to both the current and historic system, Command pulls all relevant information and multimedia from records.

4 Officer tags the body worn video and marks it evidential within Pronto on his device.



The Motorola Solutions Digital Evidence Ecosystem: more of what matters

Motorola Solutions introduced its first police radio in 1930 and has partnered with law enforcement agencies ever since. Today, we support more than 100,000 public safety and commercial customers in over 100 countries. Our public safety ecosystem of technologies, from video and audio recording to advanced sensors and all-in-one digital evidence management, work together to provide more of what matters.

More Safety. More Efficiency. More Trust.

To learn more, visit: www.motorolasolutions.com/commandcentralvault

Motorola Solutions UK Limited, Nova South, 160 Victoria Street, London, SW1E 5LB motorolasolutions.com

MOTOROLA, MOTO, MOTOROLA SOLUTIONS and the Stylized M Logo are trademarks or registered trademarks of Motorola Trademark Holdings, LLC and are used under license. All other trademarks are the property of their respective owners. ©2019 Motorola Solutions, Inc. All rights reserved. 08-2019