

# ZF Asia Pacific

At a Glance

Drucknummer ...



ZF is a Worldwide Leading Automotive Supplier of Driveline and Chassis Technology

We develop and manufacture innovative, high-quality products and related technologies that improve the mobility of people and goods. Our products and services offer our customers clear added value through leading technologies, quality, and service. Our passionate commitment to achieving greater efficiency and resource conservation has made us a trendsetter in new markets.

We believe in fair and reliable business practices everywhere we operate, and our global reach ensures our customers a tight-knit network of knowledgeable contact partners.

As a company owned by two foundations, we strive for sustainability and efficiency to ensure our economic and financial independence. An agile organizational structure, lean processes, and an enduring willingness to change are the basis for continuous improvement in the company's performance.

ZF is a decentralized company with divisions and business units that operate independently and respond flexibly to the needs of our customers. However, the Group sets the strategy of divisions and business units, and the Group's overall interests take priority over the individual interests of the divisions and business units.

## 2010 Facts & Data

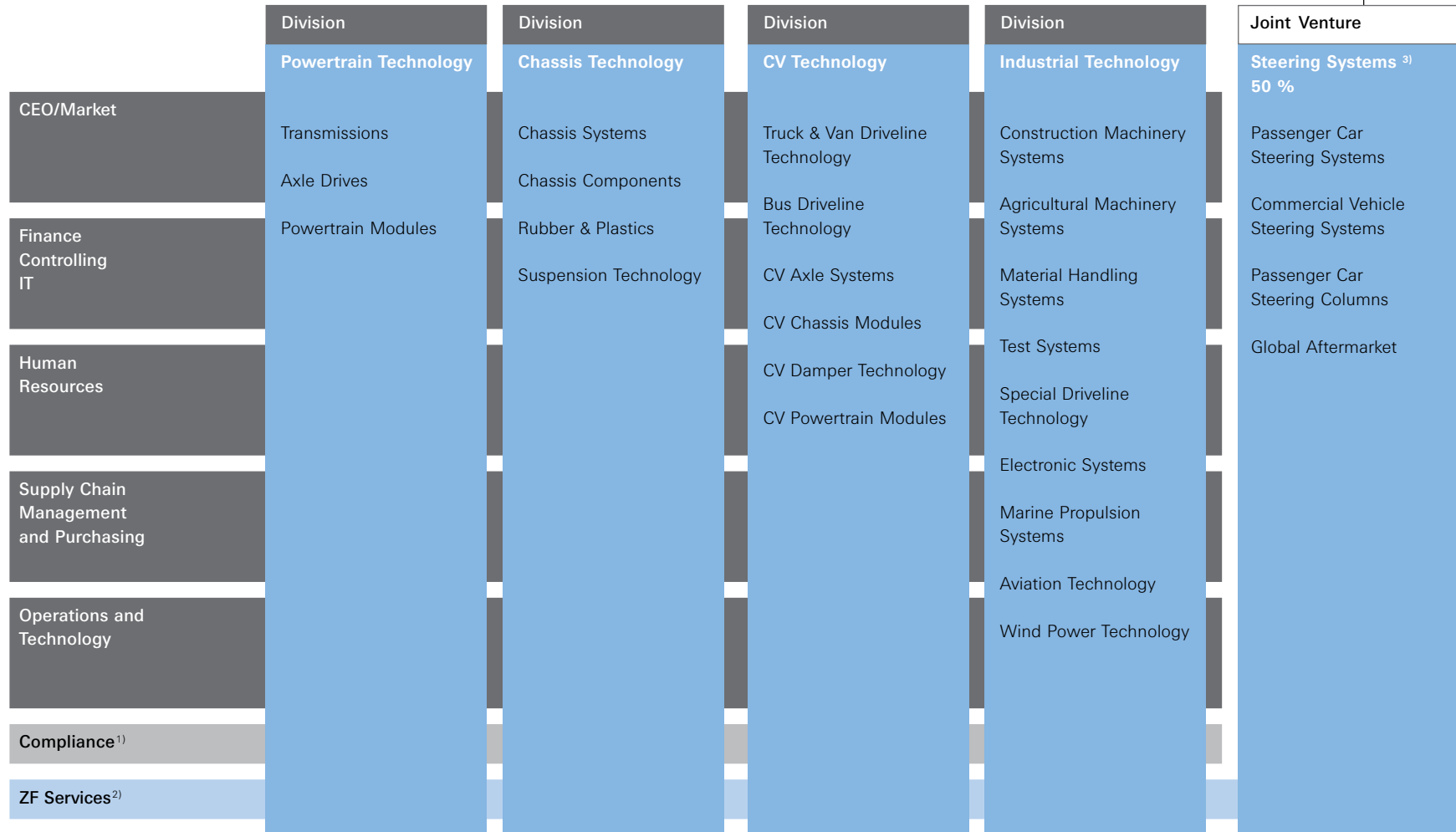
Sales	€ million	12.907
Capital expenditure	€ million	582
Employees		64.600

A motivated and skilled workforce is our most important asset and a decisive success factor at ZF. We offer all of our employees outstanding opportunities for advancement with regard to their skills, performance, commitment, and mobility. ZF maintains an open dialog with its employees and employee representatives. We proudly work together to make ZF a successful company and view our employees as team members who can be successful only if all work together toward the same goals, throughout all divisions, and across all borders.

We respect the business ethics and legal standards of the countries where we operate. Reliability and fairness are inherent principles of our corporate culture as are honesty and responsibility in all of our actions. We are active members in our communities and maintain a regular dialog with the public. As well, we view our responsibility to social causes, especially environmental protection, among our key corporate goals and seek ways to regularly engage our entire company in their pursuit.

# New Corporate Structure

ZF Friedrichshafen AG Shareholders: 93.8 % Zeppelin Foundation and 6.2 % Dr. Jürgen and Irmgard Ulderup Foundation



■ Board of Management

■ Organizational unit

<sup>1)</sup> linked to CEO

<sup>2)</sup> linked to Market domain

<sup>3)</sup> ZF Lenksysteme GmbH is a joint venture

of ZF Friedrichshafen AG and Robert Bosch GmbH.

# Powertrain Technology



The Powertrain Technology division is responsible for the following business units: Transmissions, Axle Drives, and Powertrain Modules.

# Chassis Technology

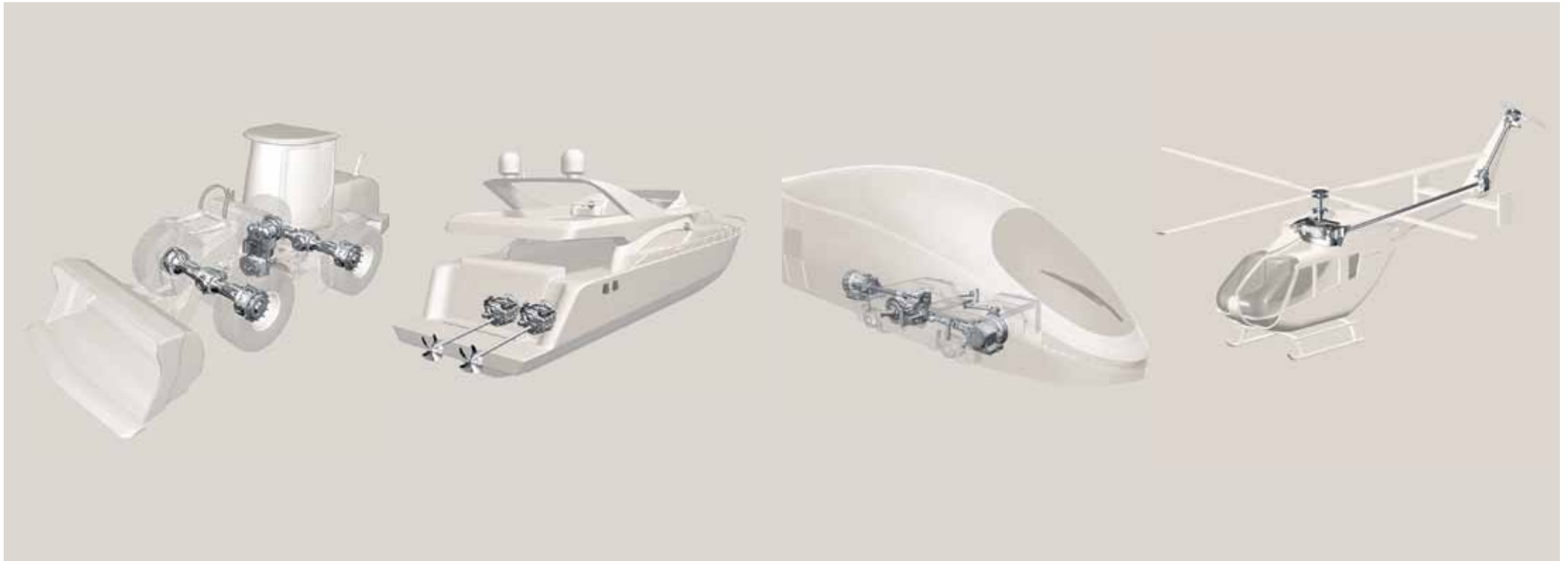


The Chassis Technology division is responsible for the following business units: Chassis Systems, Chassis Components, Rubber and Plastics, and Suspension Technology.

# Commercial Vehicle Technology



The Commercial Vehicle Technology division is responsible for the following business units: Truck Driveline Technology, Bus Driveline Technology, Pickup / Van Driveline Technology, CV Axle Systems, CV Chassis Modules, CV Damper Technology, and CV Powertrain Modules.



The Industrial Technology division is responsible for the following business units: Construction Machinery Systems, Agricultural Machinery Systems, Material Handling Systems, Test Systems, Special Driveline Technology, Electronic Systems, Marine Propulsion Systems, Aviation Technology, Wind Power Technology.

# ZF Asia Pacific

ZF Asia Pacific is synonymous with competence, quality and service orientation for customers in the Original Equipment (OE), Parts Sales and Workshop Service business serving the automotive and marine industries. Technical services and advice, training requirements are offered from a single source.

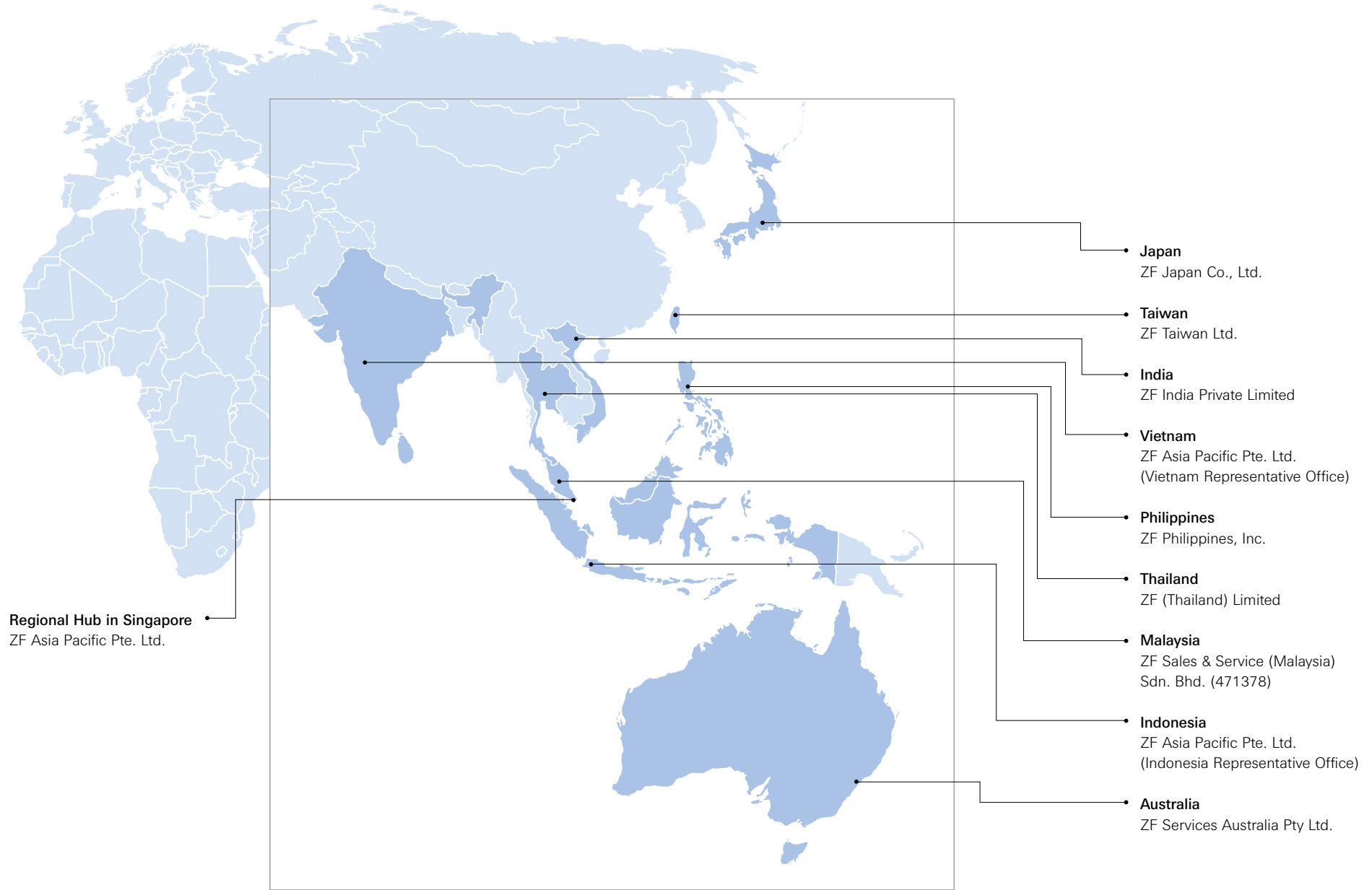
With our cutting-edge technology, innovative products, excellent quality and first class service solutions by the ZF team in Asia Pacific, we continually deliver tailored solutions that meet the exact needs of all our customers.



Providing quality service and being customer focus is the key in our success.



# ZF Asia Pacific



# Strategic Business Unit – Original Equipments (OE)

## Original Equipment (OE)

ZF Asia Pacific manages the sales of ZF products to local automotive manufacturers in agreement with ZF Divisions. The range of products includes transmissions, steering systems, axles, and chassis components as well as complete systems for passenger cars, commercial vehicles, and off-road machinery.

Being a transmission specialist, the team provides local support for sales and technical consultations to customers in the region.



ZF technology offers performance and quality in products and services.

## Strategic Business Unit – Service



Fixed-price repairs, preventive overhaul, retrofitting and environment-friendly remanufacturing are performed quickly and professionally by ZF.

### Service

At ZF Asia Pacific, a wide range of services for various products and customized service packages are available to meet the needs of each customer in the automotive and marine field.

Transmissions supplied are carefully examined during repair work, the unit is disassembled into individual components, cleaned and damaged parts replaced with new components. Only after several functional tests with the ZF professional testing tools – is the transmission once again roadworthy.

ZF employees are kept up to date with the latest technical developments so as to ensure professional diagnostics and performance of service and repair work on modern vehicles.

# Strategic Business Unit – Parts Sales

## Parts Sales

ZF Asia Pacific offers its business partners a complete range of drive train, steering, and chassis technology in original equipment quality.

~~Our range of aftermarket products are suitable for both automotive, and marine. The fast turnaround deliveries and local service support, ensures our leadership.~~



Our four powerful product brands of SACHS, LEMFÖRDER, BOGE and ZF Parts stand for expertise, quality and service.

## Strategic Business Unit – Marine



As a truly international supplier of marine propulsion systems, with design and production facilities and an extensive sales and service network, ZF Marine is well positioned to serve all your propulsion requirements.

### **Marine**

ZF Marine, a leading supplier of marine propulsion systems for all types of vessels, is committed to continuous development using advanced technology and high quality standards.

Original parts and repair services are offered to ensure critical performance and reliability of products and services from ZF.

ZF Marine's experienced professionals develop fully integrated systems according to individual customer requirements which help to add value to customer's enterprises!

# Contact

## Contact addresses

### AUSTRALIA

ZF Services Australia Pty Ltd.  
14 Lidco Street  
Arndell Park, NSW 2148  
Tel: +61 2 9679 5555  
Fax: +61 2 9679 5500  
Email: info.zf-services.au@zf.com

### INDIA

ZF India Private Limited  
Muttha Towers, Office 8 & 9, 4th Floor,  
Yerawada, 411006 Pune, India  
Tel: +91 20 6629 0800  
Fax: +91 20 66290800  
Email: zfservices.india@zf.com

### INDONESIA

ZF Asia Pacific Pte. Ltd.  
(Indonesia Representative Office)  
MNC Tower (Menara Kebon Sirih),  
21st Floor, Suite 2107,  
Jalan Kebon Sirih 17-19,  
Jakarta 10340 Indonesia  
Tel: +62 21 3983 6924  
Fax: +62 21 3983 6926  
Email: info.zf-services.id@zf.com

### JAPAN

ZF Japan Co., Ltd.  
Palazzo Astec Bldg. 7  
8F 2-8-1 Higashi-Shimbashi, Minato-ku,  
Tokyo 105-0021, Japan  
Tel: +81 3 4590 7700  
Fax: +81 3 4590 7770  
Email: info.tky@zf.com

### MALAYSIA

ZF Sales & Service (Malaysia) Sdn Bhd  
(471378-U)  
No. 12, Jalan Teknologi 3/1,  
Seksyen 3 Kota Damansara,  
47810 Petaling Jaya,  
Selangor Darul Ehsan, Malaysia  
Tel: +603 6157 8856  
Fax: +603 6157 9648  
Email: info.zf-services.my@zf.com

### PHILIPPINES

ZF Philippines, Inc.  
Email: info.zf-services.ph@zf.com

### SINGAPORE

ZF Asia Pacific Pte. Ltd.  
(Company Reg. No. 198702489N)  
11 Tuas Drive 1  
Singapore, 638678  
Tel: +65 6424 8787  
Fax: +65 6424 8788  
Email: info.zf-services.sg@zf.com

### TAIWAN

ZF Taiwan Ltd.  
No. 131-20, Zhongxing N. St.,  
Sanzhong Dist., New Taipei City,  
24158, Taiwan  
Tel: +886 2 8511 2900  
Fax: +886 2 8512 2607  
Email: info.zf-services.tw@zf.com

### THAILAND

ZF (Thailand) Limited  
159/33 Moo 3  
Soi Vipavadee-Rangsit 64  
Vipavadee-Rangsit Road,  
Talad Bangkhen, Laksi,  
Bangkok 10210, Thailand  
Tel: +66 2 5216520  
Fax: +66 2 5216523  
Email: info.zf-services.th@zf.com

### VIETNAM

ZF Asia Pacific Pte. Ltd.  
(Vietnam Representative Office)  
Unit 908, Tung Shing Square Building,  
2 Ngo Quyen Str., Hanoi, Vietnam  
Tel: +84 4 3935 1620  
Fax: +84 4 3935 1621  
Email: info.zf-services.vn@zf.com