

Xerox DocuPrint NPS/ IPS

***Guide to Configuring and Managing the
System***

721P90041
Version 8.0
October 2002

Xerox Corporation
701 S. Aviation Boulevard
El Segundo, CA 90245

©2002 by Xerox Corporation. All rights reserved.

Copyright protection claimed includes all forms and matters of copyrightable material and information now allowed by statutory or judicial law or hereinafter granted, including without limitation, material generated from the software programs which are displayed on the screen, such as icons, screen displays, looks, etc.

Printed in the United States of America.

Publication number: 721P90041

Xerox® and all Xerox products mentioned in this publication are trademarks of Xerox Corporation. Products and trademarks of other companies are also acknowledged.

Changes are periodically made to this document. Changes, technical inaccuracies, and typographic errors will be corrected in subsequent editions.

Table of contents

Safety	ix
Laser safety	ix
Ozone information: U. S. only	x
Operation safety: U. S.	x
Operation safety: Europe	xi
Warning markings	xi
Electrical supply	xii
Ventilation	xii
Operator accessible areas	xii
Maintenance	xiii
Before cleaning your product	xiii
CE mark: Europe only	xiii
Radio and telecommunications equipment directive (Europe only)	xiv
For further information	xv
Introduction	xvii
About this guide	xvii
Contents	xviii
Conventions	xix
Related publications	xx
1. Using the system interface	1-1
Using the command line interface	1-1
Accessing administrator or operator commands	1-2
Change Administrator Password	1-3
Change Operator Password	1-3
Accessing commands from a remote workstation	1-4
Using telnet remote access	1-4
Using Web-based remote access	1-5
2. Using utility commands	2-1
General utility commands	2-1
Broadcast message to all execs	2-1
Eject CDROM	2-2
Eject Floppy command	2-2
Format Floppy command	2-2
Copy Documents to Floppy command	2-3
Copy Documents to DOS Floppy command	2-4

Copy Documents to Tape command	2-4
Copy Documents to Disk command	2-5
Examine Document command	2-6
Install Remote Update command	2-7
Install Update from Floppy command	2-7
Install Update from CDROM command	2-7
List Files on CDROM command	2-8
Print Documents from CDROM command	2-8
Print Documents from Floppy command	2-9
Backup Site Files command	2-9
Restore Site Files command	2-10
Backup Xerox Files command	2-10
Restore Xerox Files command	2-11
Backup Virtual Printers List command	2-11
Restore Virtual Printers List command	2-11
Set Status Message command	2-12
Reset Job IDs command	2-12
Show Host ID command	2-13
Managing IPDS tracing	2-13
Show IPDS Tracing command	2-13
Start IPDS Tracing command	2-13
Stop IPDS Tracing command	2-14
List IPDS Trace Files command	2-14
Delete IPDS Trace Files command	2-14
DocuPrint NPS/IPS software licensing	2-15
Install Feature License command	2-16
Install FlexLicense from Floppy command	2-17
Show License Status command	2-17
Install License command	2-18
Copy IOT Fault Data to Disk	2-18
Configure utility	2-19
Changeable parameters	2-20
Options	2-23
Printing Configuration Reports: Options 1 and 2	2-23
Reviewing Questions and Answers: Options 3 and 4	2-24
Editing Individual Parameters: Option 5	2-25
Reinitializing Software: Option 6	2-26
Saving and Restoring Values: Options 7 and 8	2-27
Configure Utility example for changing the hostname	2-27
Setting up TCP/IP Socket Printing	2-28
Recovering the Job Pool Manager database	2-28
Enabling and disabling remote service	2-29
Enable modem command	2-30
Disable modem command	2-31
Enable Remote Shell command	2-31
Disable Remote Shell command	2-32

3. Starting and stopping the system	3-1
Powering on the system	3-1
Powering off the system	3-3
Using the Halt System command to stop the system	3-3
Using the background menu to stop the system	3-3
Powering the system off and on after a power failure	3-5
Stopping and starting job processing	3-5
Restarting the sequencer, IPDS parser, and the system	3-5
Restart Sequencer command	3-6
Restart IPDS Parser command	3-6
Restart System command	3-6
4. DocuPrint NPS/IPS on a Novell network	4-1
Choosing a Print Server or Remote Printer configuration	4-1
Configuring DocuPrint NPS/IPS as a PSERVER	4-4
Configuring DocuPrint NPS/IPS as an RPRINTER	4-5
Supporting DocuPrint NPS/IPS on the Novell file server	4-6
5. Setting system defaults	5-1
Setting default media	5-2
Set Default Media command	5-2
Show Default Media command	5-4
Setting feeder tray attributes	5-4
Set Tray and Set Tray Default commands	5-5
Set Tray <n> Tray <m> command	5-7
Set Tray <n> Position <m> command	5-7
Set Tray <n> Purge/No Purge	5-8
Set Tray From Virtual Printer Media command	5-8
Unset Tray <n> command	5-9
Setting stacker groups	5-10
Set Stacker To Group command	5-10
Unset Stacker command	5-10
Setting printer options	5-11
Set Option command	5-11
List Options command	5-28
Print Options command	5-29
Setting imager parameters	5-29
Show Imager Parameters command	5-30
Change Imager Parameters command	5-30
Restore Default Imager Parameters command	5-32
Setting PCL imager parameters	5-33
Show PCL Imager Parameters	5-33
Change PCL Imager Parameters command	5-34
Restore Default PCL Imager Parameters command	5-35
Setting PCL parameters	5-36
Change PCL Parameters command	5-36

Restore Default PCL Parameters command	5-40
Show PCL Parameters command	5-41
Example	5-41
6. Input and output profiles	6-1
Profile commands	6-1
Show Profiles command	6-1
Create Profile command	6-2
Set Profile command	6-2
Delete Input/Output Profile command	6-3
Profile parameters	6-3
7. Setting the printer controller date and time	7-1
Show Time command	7-1
Set Time command	7-1
8. Checking system status and displaying billing meters	8-1
List Volumes command	8-2
Show Status command	8-2
Show IPDS Status command	8-4
Listing and printing sample documents	8-5
List Sample Documents command	8-5
Print Sample Document command	8-7
List Executives command	8-8
Display Billing Meters command	8-8
Print Billing Report command	8-11
9. Managing accounting files and logs	9-1
Maintaining accounting files	9-1
Accounting file versions	9-2
Dump Accounting command	9-7
Copy Accounting to Floppy command	9-8
Delete Accounting command	9-9
Managing DocuPrint NPS/IPS log files	9-9
List Logs command	9-10
Show Log command	9-10
Copy Logs to Floppy command	9-11
Delete Logs command	9-12
Print Log command	9-13
10. Managing PostScript and PCL fonts	10-1
Installing fonts	10-1
Install Fonts from CDROM command	10-2
Install Fonts from Floppy command	10-2
Install PCLFonts from Floppy command	10-3
Deleting fonts	10-4

Listing fonts	10-6
List CDROM Fonts command	10-6
List Floppy Fonts command	10-6
List Fonts command	10-7
Print Font List command	10-8
Print Font Sample command	10-8
Print PCLFont Sample command	10-9
11. Managing forms	11-1
Print Form List command	11-1
List Forms command	11-2
Print Form Sample command	11-3
Delete Forms command	11-4
12. Using Wizard Mode or UNIX shell	12-1
Using Wizard Mode	12-1
Using the UNIX shell	12-2
Mounting a CD-ROM or a floppy diskette	12-2
Mount CDROM command	12-2
Unmount CDROM command	12-3
Mount Floppy command	12-3
Creating a telnet greeting message	12-4
Enabling the lpr security option	12-5
Removing orphan data files	12-6
13. Handling DigiPath jobs	13-1
Configuring DocuPrint NPS/IPS for XDOD/DigiPath	13-1
Configuring NFS for XDOD 3.1 or earlier	13-2
Configuring the default NFS daemon	13-2
Verifying correct installation	13-2
Removing .gfi directories	13-3
14. MICR printing	14-1
Considerations for MICR printing on NPS/IPS models	14-1
Security issues	14-2
15. Performing color calibration	15-1
Setting color calibrations	15-1
When to perform calibration	15-1
Evaluating color quality	15-2
Calibration procedure	15-2
More on the calibration work flow	15-5
Print Color Calibration Target command	15-6
Set ColorTRC command	15-9
List Color Calibrations command	15-10
Rename Color Calibration command	15-10

Delete Color Calibration command	15-11
Set Default Color Calibration command	15-11
Show Default Color Calibration command	15-12

Safety

Laser safety

WARNING

Adjustments, use of controls, or performance of procedures other than those specified herein may result in hazardous light exposure.

The Xerox DocuPrint printers are certified to comply with the performance standards of the U.S. Department of Health, Education, and Welfare for Class 1 laser products. Class 1 laser products do not emit hazardous radiation. The DocuPrint printers do not emit hazardous radiation because the laser beam is completely enclosed during all modes of customer operation.

The laser danger labels on the system are for Xerox service representatives and are on or near panels or shields that must be removed with a tool.

DO NOT REMOVE LABELED PANELS OR PANELS NEAR LABELS. ONLY XEROX SERVICE REPRESENTATIVES HAVE ACCESS TO THESE PANELS.

DANGER

**LASER RADIATION WHEN OPEN
AVOID DIRECT EXPOSURE TO BEAM**

Ozone information: U. S. only

This product produces ozone during normal operation. The amount of ozone produced depends on copy volume. Ozone is heavier than air. The environmental parameters specified in the Xerox installation instructions ensure that concentration levels are within safe limits. If you need additional information concerning ozone, call 1-800-828-6571 to request the Xerox publication 600P83222, *OZONE*.

Operation safety: U. S.

Your Xerox equipment and supplies have been designed and tested to meet strict safety requirements. They have been approved by safety agencies, and they comply with environmental standards. Please observe the following precautions to ensure your continued safety.

WARNING

Improper connection of the equipment grounding conductor may result in risk of electrical shock.

- Always connect equipment to a properly grounded electrical outlet. If in doubt, have the outlet checked by a qualified electrician.
- Never use a ground adapter plug to connect equipment to an electrical outlet that lacks a ground connection terminal.
- Always place equipment on a solid support surface with adequate strength for its weight.
- Always use materials and supplies specifically designed for your Xerox equipment. Use of unsuitable materials may result in poor performance and may create a hazardous situation.
- Never move either the printer or the printer controller without first contacting Xerox for approval.
- Never attempt any maintenance that is not specifically described in this documentation.
- Never remove any covers or guards that are fastened with screws. There are no operator-serviceable areas within these covers.

- Never override electrical or mechanical interlocks.
- Never use supplies or cleaning materials for other than their intended purposes. Keep all materials out of the reach of children.
- Never operate the equipment if you notice unusual noises or odors. Disconnect the power cord from the electrical outlet and call service to correct the problem.

If you need any additional safety information concerning the equipment or materials Xerox supplies, call Xerox Product Safety at the following toll-free number in the United States:

1-800-828-6571

For customers outside the United States, contact your local Xerox representative or operating company.

Operation safety: Europe

This Xerox product and supplies are manufactured, tested and certified to strict safety regulations, electromagnetic regulations and established environmental standards.

Any unauthorised alteration, which may include the addition of new functions or connection of external devices, may impact the product certification.

Please contact your Xerox representative for more information.

Warning markings

All warning instructions marked on or supplied with the product should be followed.



This WARNING alerts users to areas of the product where there is the possibility of personal damage.



This WARNING alerts users to areas of the product where there are heated surfaces, which should not be touched.

Electrical supply

This product shall be operated from the type of electrical supply indicated on the product's data plate label. If you are not sure that your electrical supply meets the requirements, please consult your local power company for advice.



This product must be connected to a protective earth circuit. This product is supplied with a plug that has a protective earth pin. This plug will fit only into an earthed electrical outlet. This is a safety feature. Always connect equipment to a properly grounded electrical outlet. If in doubt, have the outlet checked by a qualified electrician.

To disconnect all electrical power to the product, the disconnect device is the power cord. Remove the plug from the electrical outlet.

Ventilation

Slots and opening in the enclosure of the product are provided for ventilation. Do not block or cover the ventilation vents, as this could result in the product overheating.

This product should not be placed in a built-in installation unless proper ventilation is provided, please contact your Xerox representative for advice.

Never push objects of any kind into the ventilation vents of the product.

Operator accessible areas

This product has been designed to restrict operator access to safe areas only. Operator access to hazardous areas is restricted with covers or guards, which would require a tool to remove. Never remove these covers or guards.

Maintenance

Any operator product maintenance procedures will be described in the user documentation supplied with the product. Do not carry out any maintenance on the product, which is not described in the customer documentation.

Before cleaning your product

Before cleaning this product, unplug the product from the electrical outlet. Always use materials specifically designated for this product, the use of other materials may result in poor performance and may create a hazardous situation. Do not use aerosol cleaners, they may be flammable under certain circumstances.

CE mark: Europe only



January 1, 1995: Council Directive 73/23/EEC, amended by Council Directive 93/68/EEC, approximation of the laws of the member states related to low voltage equipment.

January 1, 1996: Council Directive 89/336/EEC, approximation of the laws of the member states related to electromagnetic compatibility.

March 9, 1999: Council Directive 99/5/EC, on radio equipment and telecommunications terminal equipment and the mutual recognition of their conformity.

A full declaration of conformity, defining the relevant directives and referenced standards, can be obtained from your Xerox representative.

In order to allow this equipment to operate in proximity to Industrial, Scientific and Medical (ISM) equipment, the external radiation for the ISM equipment may have to be limited or special mitigation measures taken.

This is a Class A product. In a domestic environment this product may cause radio frequency interference, in which case the user may be required to take adequate measures.

Shielded interface cables must be used with this product to maintain compliance with Council Directive 89/36/EEC.

Radio and telecommunications equipment directive (Europe only)

Certification to 1999/5/EC Radio Equipment and Telecommunications Terminal Equipment Directive:

This Xerox product has been self-certified by Xerox for pan-European single terminal connection to the analog public switched telephone network (PSTN) in accordance with Directive 1999/5/EC.

The product has been designed to work with the national PSTNs and compatible PBXs of the following countries:

Austria	Germany	Luxembourg	Sweden
Belgium	Greece	Netherlands	Switzerland
Denmark	Iceland	Norway	United Kingdom
Finland	Ireland	Portugal	
France	Italy	Spain	

In the event of problems, contact your local Xerox representative in the first instance.

This product has been tested to, and is compliant with, TBR21, a specification for terminal equipment for use on analog switched telephone networks in the European Economic area.

The product may be configured to be compatible with other country networks. Please contact your Xerox representative if your product needs to be reconnected to a network in another country. This product has no user-adjustable settings.

NOTE: Although this product can use either loop disconnect (pulse) or DTMF (tone) signaling, it should be set to use DTMF signaling. DTMF signaling provides reliable and faster call setup.

Modification or connection to external control software, or to external control apparatus not authorized by Xerox, invalidates its certification.

For further information

For more information on Environment, Health and Safety in relation to this Xerox product and supplies, please contact the following customer help lines:

Europe:+44 1707 353434

USA:1 800 8286571

Canada:1 800 8286571

Introduction

This *Xerox DocuPrint NPS/IPS Guide to Configuring and Managing the System* provides information on how to perform operations and administration tasks for all DocuPrint NPS/IPS models, including DocuColor 2060 NPS/IPS.

You may be using the DocuPrint NPS/IPS software extension on a DocuPrint EPS 2000 Series system. The 2000 Series printer models that support the extensions are the 100, 115, 135, 155, and 180. These printers are comparable in capabilities to the DocuPrint NPS/IPS models 96, 4635, and 180.

About this guide

This guide is intended for operators and administrators who are responsible for setting up and maintaining DocuPrint NPS/IPS printers.

Users should have an understanding of printer controller operations and, for some tasks, be familiar with basic UNIX commands.

Some of the procedures described in this guide may be performed by the printer operator. For more information on printer operator tasks, refer to the *Guide to Managing Print Jobs* and the other documents in the Xerox DocuPrint NPS/IPS series.

DocuPrint NPS/IPS provides two interface options: a command line interface that has been used on DocuPrint NPS systems since the release of the product, and a graphical user interface available as of version 8.0. This guide provides the syntax for the command line interface. If you are using the graphical user interface, refer to the on-line help for information on how to navigate the graphical user interface. Regardless of the interface you use, the description of system functionality in this guide applies.

Before using this guide, become familiar with its contents and conventions.

Contents

This section lists the contents of this guide:

- Chapter 1, “Using the system interface,” describes the command line interface, the graphical user interface, and remote access.
- Chapter 2, “Using utility commands,” describes the use of a number of utilities such as backup and restore site files, Configure, and other useful commands.
- Chapter 3, “Starting and stopping the system,” describes how to power on and off the system, and how to start and stop job processing, the sequencer, and the system.
- Chapter 4, “DocuPrint NPS/IPS on a Novell network,” contains a brief overview of Novell NetWare, and describes some of the things you must consider before the service representative installs DocuPrint NPS/IPS on a Novell network.
- Chapter 5, “Setting system defaults,” provides information on how to set system defaults, including setting up feeder trays and stacker groups.
- Chapter 6, “Input and output profiles,” describes commands used for DocuPrint NPS/IPS configured with third party input and output devices.
- Chapter 7, “Setting the printer controller date and time,” describes how to set the time on the printer controller.
- Chapter 8, “Checking system status and displaying billing meters,” describes how to check status, print sample documents, and display billing meters.
- Chapter 9, “Managing accounting files and logs,” provides information on how to manage DocuPrint NPS/IPS accounting and log files.
- Chapter 10, “Managing PostScript and PCL fonts,” provides the procedures used to install and maintain fonts on the printer controller.
- Chapter 11, “Managing forms,” describes how to print a list and a sample of forms.
- Chapter 12, “Using Wizard Mode or UNIX shell,” provides guidelines for working in the DocuPrint NPS/IPS Wizard mode and UNIX shell, including some useful procedures performed in UNIX.

- Chapter 13, “Handling DigiPath jobs,” describes how to install NFS and how to handle problems that may occur with print jobs submitted from the DigiPath client.
- Chapter 14, “MICR printing,” provides a discussion of MICR issues for the DocuPrint MICR NPS/IPS printers.
- Chapter 15, “Performing color calibration,” describes the process of adjusting color calibrations on full color printers.

Conventions

This guide uses the following conventions:

- **All caps and angle brackets:** Within procedures, the names of keys are shown in all caps within angle brackets (for example, press <ENTER>).
- **Angle brackets:** Variable information, or the position of a specified argument in the command syntax, appears in angle brackets (for example, List Fonts <Pattern>).
- **Bold:** Within procedures, text and numbers that you enter are shown in bold (for example, enter **privilege operator**).
- **The word “enter” within procedures:** The two-step process of keying in data and pressing <ENTER> (for example, enter **y**).
- **Italics:** Document and library names are shown in italics (for example, the *Xerox DocuPrint NPS/IPS Guide to Managing Print Jobs*).
- **Quotation marks:** Keywords you can enter as arguments appear in quotes (for example, “USLetter”).
- **Vertical bars:** Alternatives to specified arguments are separated by vertical bars (for example, Set Time <Time | Remote Host Name | IP Address>).

NOTE: Notes are hints that help you perform a task or understand the text.

CAUTION

Cautions alert you to an action that could damage hardware or software.

WARNING

Warnings alert you to conditions that may affect the safety of people.

Related publications

The Xerox DocuPrint NPS/IPS documentation set includes the documents listed below.

NOTE: For a list of IBM reference manuals for IPDS printing, refer to the Solutions Guide for IPDS Printing.

- *Guide to Configuring and Managing the System*
- *Guide to Managing Print Jobs*
- *Guide to Performing Routine Maintenance*
- *Guide to Submitting Jobs from the Client*
- *Guide to Using Page Description Languages*
- *Installation Planning Guide*
- *System Overview Guide*
- *Troubleshooting Guide*
- *Solutions Guide for IPDS Printing*
- *Decomposition Service and Tools Guide*
- *Generic MICR Fundamentals Guide*
- *Glossary*
- *Master Index*
- *Customer Information Quick Reference Card*
- *Printer Controller Commands Quick Reference Card*
- *Operator Quick Reference Card*
- *Submitting your Jobs from Macintosh Quick Reference Card*
- *Submitting your Jobs from UNIX & DOS Quick Reference Card*

- *Submitting your Jobs from Windows NT 4.0 (QuickPrint) Quick Reference Card*
- *Submitting your Jobs Using Windows NT 4.0 Drivers Quick Reference Card*

The documentation set also includes an electronic version, the DocuPrint NPS/IPS Interactive Customer Documentation CD.

1. Using the system interface

This chapter describes the user interface for the DocuPrint NPS/IPS printer controller. There are two interface options at the controller: a command line interface and a graphical user interface. This book provides syntax for the command line interface, though it also contains useful information about the system in general. For information about using the graphical user interface, refer to the online help. To change the interface you are using, use the Configure utility.

In addition to the interface at the printer controller, you can access system commands from a remote networked workstation using telnet or a web browser.

Using the command line interface

The command line interface uses natural language and employs typing accelerators such as automatic command completion. Telnet remote access uses the same syntax.

Listing commands and options

Use the Print Service window to enter the commands. For all commands:

- You can enter **?** at the prompt to display all available commands.
- You can enter **?** at any point in a command for more information.

Command shortcuts

You need not enter a command in full—only enough to distinguish it from other commands. For example, you can enter **li doc** for the **List Documents** command. After typing enough characters to make a command word unique, use the space bar to complete the word. After typing enough characters to make a command unique, use the <RETURN> key to execute the command.

- Including arguments** Some commands have required or optional arguments. You can enter arguments on the same line as the command. For required arguments, the system prompts you for the value of each argument if you do not enter it on the command line.
- Canceling commands** You can terminate most commands by holding down <CONTROL> while pressing <C>.

Accessing administrator or operator commands

DocuPrint NPS/IPS offers three access levels for entering printer controller commands: User, Operator, and Administrator. Commands at the Administrator and Operator levels control most functions of the printer controller. There is also a separate access level for your service technician.

Syntax Privilege <Access level> <password>

- Arguments** <Access level>
- Administrator
Allows access to all commands. Requires administrator password.
 - Operator
Allows access to the subset of commands available to operators. Requires operator password.
 - No argument or User
Allows access to a limited set of commands that do not allow managing jobs or the system. No password required.

- Access procedures**
- To access administrator-level commands:
1. At the PS> prompt on the controller screen, enter **privilege administrator**.
 2. Enter the administrator password if it is set.
- If the PS-admin> prompt is not displayed and you see one or more status messages, press <RETURN> to display the prompt.
- To access operator-level commands:
1. At the PS> prompt, enter **privilege operator**.
 2. Enter the operator password if it is set.

If the PS-op> prompt is not displayed and you see one or more status messages, press <RETURN> to display the prompt.

Before you leave the system unattended, return to the User level of commands by entering **privilege user** at the prompt.

Change Administrator Password

Use the **Change Administrator Password** command to change the password used to access the Administrator level of commands.

Access level Administrator

Syntax Change Administrator Password

Arguments None. The system prompts you to enter the old, and then a new, Administrator password. The password will not be case-sensitive if you enter it with all lower-case letters. If you use any upper-case letters, the password is case-sensitive.

When changing the password, the system prompts twice for the new password. If uppercase letters are entered at the first prompt, then lowercase on the second prompt, the system will accept the new password, but it will be case sensitive.

When entering a lowercase password to the first prompt, and then an uppercase password to the second prompt, the resulting password is not case sensitive.

Change Operator Password

Use the **Change Operator Password** command to change the password used to access the operator level of commands. The password is not case-sensitive.

Access level Administrator

Syntax Change Operator Password

Arguments None. The system prompts you to enter the old, and then a new, Operator password. The password is not case-sensitive.

Accessing commands from a remote workstation

The DocuPrint NPS/IPS system allows you to access many controller commands from a remote networked workstation. You can use either a telnet connection or a web browser to enter commands. Commands that require proximity to the printer, like commands to set a tray, or perform functions using a CD or floppy, are not available remotely.

Using telnet remote access

You can access the printer controller remotely from any client that supports the telnet protocol. You can enter User, Operator or Administrator modes, and use most command line interface commands that do not require physical interaction with the system.

To establish a telnet connection, refer to your workstation software documentation. To log off the remote connection, enter **Quit Connection** or **q**.

You can determine which telnet clients are connected to your DocuPrint NPS/IPS system by entering **List Executives**. An asterisk by the message indicates the client from which you entered the command.

Operators or administrators can set messages to provide information for remote access users.

- **Set Status Message:** Provides a message when the Show Status command is used, or when remote access users log on. Refer to the chapter “Using utility commands.”
- **Broadcast Message to all execs:** Sends an immediate message to all logged on remote access users. See the chapter “Using utility commands.”
- **Telnet greeting message:** An administrator can perform a simple UNIX procedure to set up a message that appears whenever a remote access user logs in. See the chapter “Using Wizard Mode or UNIX shell.”

Using Web-based remote access

You can access the printer using a Web browser on any client computer that has network access to the printer.

To display the printer home page, enter the printer name or IP address in the Web browser, in the area where you normally enter a URL. The home page displays information about the printer configuration and gives you access to further pages:

- Show status and configuration information.
- List documents using various criteria to help you find the document you need. (Refer to figure 1-1.)

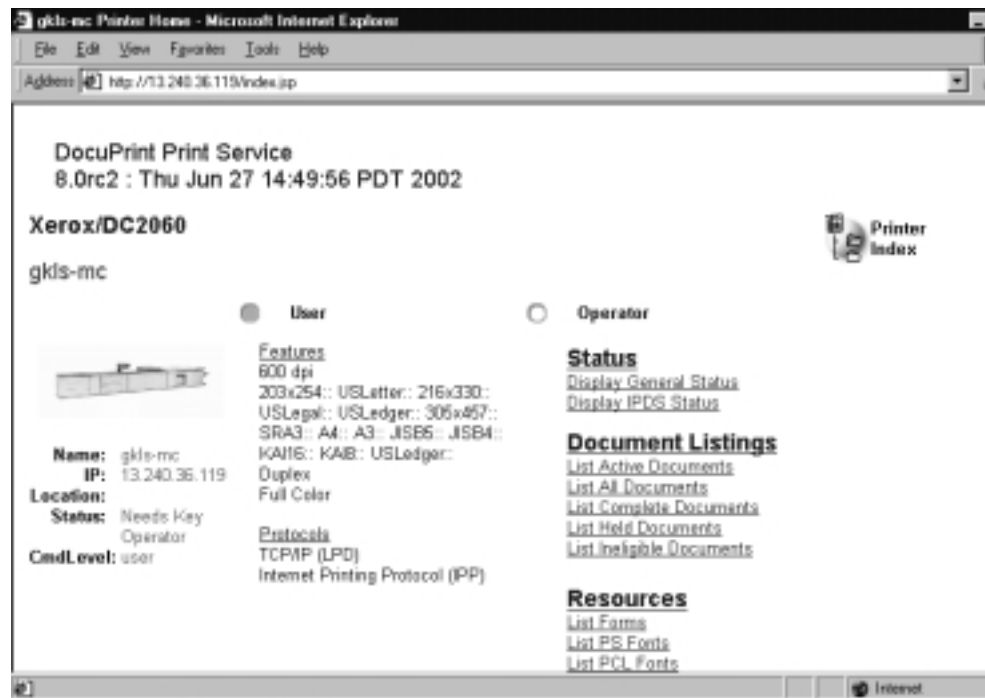


Figure 1-1. Printer home page

If you select the Operator button, a dialog appears where you enter the user name, for example “Operator” and the operator password for the system.

2. Using utility commands

This chapter describes utility commands available to the DocuPrint NPS/IPS system administrator or operator. You use these commands to perform various tasks: eject floppies or CDs, provide information to remote access users, set feature licensing, and back up and restore site files. The Configure utility allows you to change parameters that are initially set during installation. The modem commands allow you to set up and disable the external modem used by remote service technicians.

General utility commands

The following general utility commands are available on the NPS/IPS.

Broadcast message to all execs

Use the **Broadcast Message to All Execs** command to immediately send a message to all users that are logged on to the printer controller. This can be useful when you need to perform system maintenance and wish to notify remote access users.

Access level	Administrator
Syntax	Broadcast Message to all execs
Arguments	Enter the text message that you wish to broadcast.

Eject CDROM

Use the **Eject CDROM** command to eject a CD-ROM from the drive.

Access level Administrator

Syntax Eject CDROM

Arguments None

NOTE: If you need to use the UNIX procedure to mount a CD-ROM, refer to the "Using Wizard Mode or UNIX shell" chapter.

Eject Floppy command

Use the **Eject Floppy** command to eject a diskette from the diskette drive.

NOTE: Ultra 60 Controllers require you to use the button on the floppy drive to manually eject the diskette.

Access level Administrator

Syntax Eject Floppy

Arguments None

NOTE: If you need to use the UNIX procedure to mount a floppy, refer to the chapter "Using Wizard Mode or UNIX shell."

Format Floppy command

Use the **Format Floppy** command to format a diskette in the diskette drive.

Access level Administrator

Syntax Format Floppy

Arguments None

Copy Documents to Floppy command

Use the **Copy Documents to Floppy** command to copy documents to a floppy diskette. To copy documents:

1. Enter **stop printing**.
2. Put a diskette into the diskette drive.
3. Enter **copy documents to floppy**.

See the syntax and arguments below.

4. Enter **yes** to confirm the document(s) to be copied and to confirm that the diskette is inserted into the diskette drive.

Any selected documents that have not been completely printed, canceled, or aborted are copied to the diskette in UNIX compressed bar format. A file name is generated for each document as a printerName concatenated with the docID and with a .document extension. An .attrs file is also written for each document. This is an ASCII file showing the document attributes as shown in Service Mode. One additional file named printerName.printerStatus is written to the diskette (an ASCII file of the printer status as shown in Service Mode).

*NOTE: To list the content of the diskette after using the command, enter **bar -tfZ /dev/fd0c** in a UNIX shell window. Names that are listed are in relative paths. To copy the data from the diskette to a hard disk drive for further processing, enter **bar -xvfZ /dev/fd0c**. The files are stored in the current working directory.*

Access level	Administrator
Syntax	Copy Documents to Floppy [<docID(s) custom specification all>]
Arguments	<p>The following arguments are available:</p> <ul style="list-style-type: none"> • <docID(s)> The document ID for a specific document (or the range of IDs) • <custom specification> A custom specification such as sendername=name to copy all the documents with a sendername attribute that matches "name"

- <all>
Copies all documents.

Copy Documents to DOS Floppy command

Use the **Copy Documents to DOS Floppy** command to copy the specified documents to a DOS-formatted floppy disk in zipped ASCII format.

NOTE: If the resulting file is too big to fit on a single floppy disk, the operation fails.

Access level Administrator

Syntax Copy Documents to DOS Floppy <DocID(s) or Custom Specification>

Arguments The following arguments are available:

- <docID(s)>
The document ID for a specific document (or the range of IDs)
- <custom specification>
A custom specification such as sendername=name to copy all the documents with a sendername attribute that matches "name"

Copy Documents to Tape command

Use the **Copy Documents to Tape** command to copy documents to a tape. To copy documents:

1. Enter **stop printing**.
2. Put a tape into the tape drive.
3. Enter **copy documents to tape**.
See the syntax and arguments below.
4. Enter **yes** to confirm the documents to be copied and to confirm that the tape is inserted into the tape drive.

Any selected documents that have not been completely printed, canceled, or aborted are copied to the tape in UNIX compressed bar format. A file name is generated for each document as a printerName concatenated with the docID and with a .document extension. A .attrs file is also written for each document. This is an ASCII file showing the document attributes as shown in Service Mode. One additional file named printerName.printerStatus is written to the tape (an ASCII file of the printer status as shown in Service Mode).

*NOTE: To list the content of the tape after using the command, enter **bar -tfZ /dev/rmt/0** in a UNIX shell window. Names listed are in relative paths. To copy the data from the diskette to a hard drive for further processing, enter **bar -xvfZ /dev/rmt/0**. The files will be stored in the current working directory.*

Access level	Administrator
Syntax	Copy Documents to Tape [<docID(s) custom specification all>]
Arguments	The following arguments are available: <ul style="list-style-type: none">• <docID(s)> The document ID for a specific document (or the range of IDs)• <custom specification> A custom specification such as sendername=name to copy all the documents with a sendername attribute that matches "name"• <all> Copies all documents.

Copy Documents to Disk command

Use the **Copy Documents to Disk** command to copy documents to the hard disk directory /var/tmp. To copy documents:

1. Enter **stop printing**.
2. Enter **copy documents to disk**.
See the syntax and arguments below.
3. Enter **yes** to confirm the documents to be copied.

Any selected documents that have not been completely printed, canceled, or aborted are copied to the disk in zip format. A file name is generated for each document as a printerName concatenated with the docID and with a .document extension. A .attrs file is also written for each document. This is an ASCII file showing the document attributes as shown in Service Mode. One additional file named printerName.printerStatus is written to (an ASCII file of the printer status as shown in Service Mode).

Access level Administrator

Syntax Copy Documents to Disk [<docID(s) | custom specification | all>]

Arguments The following arguments are available:

- <docID(s)>

The document ID for a specific document (or the range of IDs)

- <custom specification>

A custom specification such as sendername=name to copy all the documents with a sendername attribute that matches "name"

- <all>

Copies all documents.

Examine Document command

Use the **Examine Document** command to display the PDL code of the selected document. Unprintable characters are displayed as a dot. This command does not show binary data.

Access level Administrator

Syntax Examine Document <docID>

Arguments None

Install Remote Update command

If your printer controller has a modem, the Xerox service technician can transfer a software update to your system from a remote site. Use the **Install Remote Update** command to initiate the installation process.

Access Level Administrator

Syntax Install Remote Update

Arguments None

NOTE: The UNIX root password is required to perform the update.

Install Update from Floppy command

Use the **Install Update from Floppy** command to install software upgrades from diskettes.

Access level Administrator

Syntax Install Update From Floppy

Arguments None

NOTE: The UNIX root password is required to perform the update.

Install Update from CDROM command

Use the **Install Update from CDROM** command to install software upgrades from CD-ROMs.

Access level Administrator

Syntax Install Update from CDROM

Arguments None

NOTE: The UNIX root password is required to perform the update.

List Files on CDROM command

Use the **List Files on CDROM** command to list files on the CDROM in the CDROM drive whose names match the specified pattern.

Access level Administrator

Syntax List Files on CDROM <File(s)>

Arguments <File(s)>
Specifies the name of the document you want to list.

Print Documents from CDROM command

Use the **Print Documents from CDROM** command to submit a print job for the document or documents in the specified file or files stored on the CDROM, using the specified job attributes.

Access level Administrator

Syntax Print Documents from CDROM <file(s)> <copies> <plex>
<media> <VP>

Arguments The following arguments are available:

- <file(s)>
Specifies the name of the document you want to print.
- <copies>
Specifies the number of copies to print.
- <plex>
Specifies simplex, duplex, or tumbleduplex.
- <media>
Specifies the media in the format size:type:color:weight.
- <VP>
Specifies the name of the virtual printer to use.

Print Documents from Floppy command

Use the **Print Documents from Floppy** command to print a PCL, PostScript, or ASCII file that is stored on a DOS-formatted diskette.

Access level Administrator

Syntax Print Documents from Floppy <file(s)> <copies> <plex> <media>
<VP>

Arguments The following arguments are available:

- <file(s)>
Specifies the name of the document you want to print.
- <copies>
Specifies the number of copies to print.
- <plex>
Specifies simplex, duplex, or tumbleduplex.
- <media>
Specifies the media in the format size:type:color:weight.
- <VP>
Specifies the name of the virtual printer to use.

*NOTE: This command cannot be used to print a document that was copied to the diskette with the **Copy Document to Floppy** or **Copy Document to DOS Floppy** commands.*

Backup Site Files command

Use the **Backup Site Files** command to store a copy of the files that may have been customized for your local site on diskette or tape. The files backed up include /var/db/forms and /usr/xgfc/. These directories are used for Decomposition Service forms and VIPP files, respectively.

Access level Administrator

Syntax Backup Site Files

Arguments None

CAUTION

The Backup Site Files command does not save unique customer files such as fonts. Use the UNIX tar command to back up these files. Do not use the PCFS commands, because an extension with more than three characters can result in overwriting your existing files.

Restore Site Files command

Use the **Restore Site Files** command to restore site files from the diskette or tape that you created using the **Backup Site Files** command.

Access level Administrator

Syntax Restore Site Files

Arguments None

NOTE: The system must be restarted for restored files to be recognized, even though restored items may appear active.

Backup Xerox Files command

Use the **Backup Xerox Files** command to store a copy of your Xerox files on diskette or tape. The files backed up do not include **/var/db/forms** and **/usr/xgfc/**.

Access level Administrator

Syntax Backup Xerox Files

Arguments None

CAUTION

The Backup Xerox Files command does not save unique customer files such as fonts. Use the UNIX tar command to back up these files. Do not use the PCFS commands, because an extension with more than three characters can result in overwriting your existing files.

Restore Xerox Files command

Use the **Restore Xerox Files** command to restore Xerox files from the diskette or tape that you created using the Backup Xerox Files command.

Access level Administrator

Syntax Restore Xerox Files

Arguments None

NOTE: The system must be restarted for restored files to be recognized, even though it may appear that restored items are active.

Backup Virtual Printers List command

Use the **Backup Virtual Printers List** command to store a copy of your virtual printer configuration on diskette or tape.

Access level Administrator

Syntax Backup Virtual Printers List

Arguments None

Restore Virtual Printers List command

Use the **Restore Virtual Printers List** command to restore your virtual printer configuration from the diskette or tape that you created using the **Backup Virtual Printers List** command.

Access level Administrator

Syntax Restore Virtual Printers List

Arguments None

Set Status Message command

Use the **Set Status Message** command to display a message to users each time they access the controller remotely via telnet, or when they use the **Show Status** command.

Access level Administrator or operator

Syntax Set Status Message <Message>

Arguments <Message>

Enter status message to be displayed to users at login. The message cannot contain line feeds or carriage returns, but can contain quotation marks.

NOTE: The command is not available via remote telnet access. It must be entered at the printer controller.

Reset Job IDs command

The **Reset Job IDs** command resets the starting point for new job identifiers to the lowest available number.

The highest active or undumped job ID + 1 is the lowest available number.

NOTE: To reset the job ID starting number to 1, you must make sure there are no active jobs, then dump accounting before using this command.

Access level Administrator

Syntax Reset Job IDs

Arguments None

Show Host ID command

The **Show Host ID** command shows the host ID in hexadecimal format. This may be needed when installing licensed software packages such as VIPP.

Access level Administrator

Syntax Show HostID

Arguments None

Managing IPDS tracing

This section describes the procedures you use to collect a trace of an IPDS job. In general, the service representative performs this function. However, you may be asked to perform this task in preparation for a service call.

Trace files are automatically placed in the directory `/var/db/ipdstraces`.

Show IPDS Tracing command

Use the **Show IPDS Tracing** command to identify whether IPDS tracing is on or off, and to view the most recent trace output file.

Access level Administrator

Syntax Show IPDS Tracing

Arguments None

Start IPDS Tracing command

Use the **Start IPDS Tracing** command to begin tracing IPDS jobs, writing the trace to a specified file.

NOTE: You have the option of overwriting an existing file.

Access level Administrator

Syntax Start IPDS Tracing <FileName>

Arguments FileName
Specifies the name of the file that the trace is written to.

Stop IPDS Tracing command

Use **Stop IPDS Tracing** end tracing for IPDS jobs, and showing the most recent output file name.

Access level Administrator

Syntax Start IPDS Tracing

Arguments None

List IPDS Trace Files command

Use **List IPDS Trace Files** to list all available IPDS trace files.

Access level Administrator

Syntax List IPDS Trace Files

Arguments None

Delete IPDS Trace Files command

Use **Delete IPDS Trace Files** deletes the IPDS trace files whose names match the specified pattern after confirmation for each file.

Access level Administrator

Syntax Delete IPDS Trace Files <pattern>

Arguments pattern

Indicates the pattern of trace files you want to delete. The asterisk (*) character matches any string of characters. You can enter * to delete all trace files, or <pattern> to delete all trace files of the specified pattern.

DocuPrint NPS/IPS software licensing

Your DocuPrint NPS/IPS system utilizes a software licensing string to enable the NPS/IPS printing function. If software is not licensed, queueing is disabled, and the system does not receive jobs for printing.

Other software packages also require licensing. VIPP software requires licensing for production mode. Diagnostic software for the DocuPrint 155/180 NPS/IPS requires an enabling license. If you do not have the required license, an error message is displayed and you are unable to use the software.

The **Show License Status** command displays the number of days that remain until the licensed software expires. If a license has not been installed, or is due to expire in 30 days, a message is displayed when you use the **Show Status** command using Administrator privilege.

NOTE: If you have a question about license expiration dates, contact your Xerox representative.

Two commands are available to facilitate licensing. Use the **Install Feature License** command if you plan to install the license by entering information at the user interface. Use the **Install FlexLicense from Floppy** command if you plan to install the license by using licensing information on a key diskette.

NOTE: In most cases, the licensing procedure is performed by a Xerox representative. If you plan to assist with loading, the license information will be provided to you by one of the following methods: e-mail, fax, telephone, or floppy.

Install Feature License command

Use the **Install Feature License** command to install the license by entering information at the user interface.

Access level Administrator

Syntax Install Feature License <Name> <Expiration Date> <Key> <IOT Serial No> <HostID>

Arguments The following arguments are available:

- <Name>
Name of the package to be licensed. For example, `XRX_iotdiag_basic` unlocks the basic diagnostics package for the Model 180. The license name is case-sensitive and must be entered exactly as provided.
- <Expiration Date>
Date the license for your package expires. For example, `07-Mar-2023`.
- <Key>
Alphanumeric string used to unlock the package. This number is unique for your system host ID. An example of the key is: `XX64FA01XF3EC528X917`
- <IOT Serial No>
Serial number for your printer (IOT). Used only for diagnostic licensing, but not for NPS/IPS or VIPP software licensing. An example of the IOT serial number is: `7800205`. The number of digits in the serial number varies depending on the country.
- <HostID>
Host ID for your system in hex, as displayed using the `Show HostID` command. An example of a Host ID number is `8088871e`. The system inserts this number automatically.

The following example shows license strings for DocuPrint NPS/IPS software, as well as value-added diagnostics for a model 180.

Table 2-1. **Example license string**

```
#####
# Xerox License String File © 1998 #
#####
# Created for Xerox Limited on 01-Jun-1998 by Robert Harper
# Contact: Richard Lande at (44 ) 555386624
# [WBLT output for LicID 135, HOSTID=8088879e, CustProdID 177]
# XRX_NPS/IPS_software Feature on Product 180NPS/IPS, exp. 07-Mar-2023
FEATURE XRX_NPS_software xeroxpswd 1.000 07-Mar-2023 0 AB64FA01CF3EC528X917
HOSTID=8088871e
# XRX_iotdiag_valueadded Feature on Product 180NPS/IPS, exp. 07-Mar-2023
FEATURE XRX_iotdiag_valueadded xeroxpswd 1.000 07-Mar-2023 0 1B442AD17C7EB5D57B10
VENDOR_STRING=7800205 HOSTID=8088871e
```

Install FlexLicense from Floppy command

Use the **Install FlexLicense from Floppy** command to install the license by using licensing information on a key diskette.

Access level Administrator

Syntax Install FlexLicense from Floppy

Arguments None

Show License Status command

Use the **Show License Status** command to display the number of days remaining on the license for each software package installed on your system.

Access level Administrator, Operator

Syntax Show License Status

Arguments None

Table 2-2. **Example of a license status display**

PS-Op> show license status	
XRX_VIPP_software	License will expire in 305 days.
XRX_iotdiag_valueadded	License will expire in 247 days.
XRX_NPS_software	License will expire in 247 days.

Install License command

This command was used for VIPP licensing prior to DocuPrint NPS release 1.6. **It is no longer used.**

Access level Administrator

Syntax Install License <v1> <v2> <v3> <v4>

Arguments Values for license. Enter each value when prompted. These values are case-sensitive and are valid only on the system for which they were issued.

Copy IOT Fault Data to Disk

This command is used for gathering data for use in diagnosing problems by Xerox personnel. Use as directed by your Xerox representative.

NOTE: This command is available for the 180, 4635, 96, and 2000 Series printers only.

Access level Administrator

Syntax Copy IOT Fault Data to Disk

Arguments None

Configure utility

The Configure utility allows you to review and update the configuration of your DocuPrint NPS/IPS. Most configuration values supplied during installation can be viewed, printed, and modified long after the installation is complete. Configuration values can also be saved on a diskette for later restoration. When you restore values, the system is automatically reconfigured based on the restored values.

You access the Configure utility at the PS-Admin> prompt **Configure**. You are prompted for the appropriate password.

*NOTE: You can also access this utility in Wizard Mode or from the UNIX shell when you enter **Configure**.*

Access level Administrator

Syntax Configure

You are prompted to enter the UNIX Superuser password.

Arguments The following list of options appears. Enter your selection at the prompt.

- Print report of installation questions and answers for this DocuPrint.
- Print report of all configuration parameter values.
- Review standard installation questions and change answers to some or all.
- Review key system parameters and change values.
- View and change individual parameter values.
- Re-initialize some or all of the DocuPrint software.
- Back up current configuration values.
- Restore configuration values from previous backup.
- Exit the configuration program.

When you exit the Configure utility, you must restart the system.

Changeable parameters

The Configure utility enables you to change the parameters that are shown in the table below. Refer to the following table when changing individual parameters (option 5).

- The column titled “Best option” shows the best option to use in configuring that parameter.
- All parameters can be changed using Option 5. If “5” is shown as the best option, it is the only option for changing that particular parameter.
- **Parameters in boldface type** must be set to “Y” to enable that package. The TCP/IP package is always enabled.

Table 2-3. **Changeable parameters for Configure utility**

Package	Parameter	Best option	Purpose of parameter
Appletalk	appletalk.enable	3	Enables receipt of jobs via AppleTalk PAP
	appletalk.forcePS	3	Jobs received via AppleTalk will always be interpreted as PS
	appletalk.netdevice	3	Specifies device on which to run AppleTalk
	appletalk.phase	3	Phase of the AppleTalk Network
	appletalk.zone	3	Zone name of the (phase 2) AppleTalk Network
driver	driver.iotboard	4	DCIM—refers to the type of S-bus interface board installed in the DocuPrint controller for interfacing with the printer. Do not change.
ipp	ipp.enable	3	
jpm	jpm.accounting.format	5	Specifies the format version used for the docuprint_accounting log; can be “2” or “3” or “4”.
	jpm.purge	3	Enables automatic Dump Accounting
	jpm.purge.delay	3	# of days to retain information in jpm database
	jpm.purge.save	3	Saves attribute data purged from jpm into a log file
	jpm.recovery.timeout	5	
	jpm.savedb	5	
	jpm.savejobs	5	
	jpm.savejobs.delay	5	
jtprescan	jtprescan.enable	3	Enables Xerox Job Ticket Processing (necessary for Xerox print client, MS Windows client, Windows DocuPrint driver)
lpd	lpd.enable	3	Enables receipt of jobs sent via lpr command

Table 2-3. **Changeable parameters for Configure utility (Continued)**

Package	Parameter	Best option	Purpose of parameter
	lpd.internal.default		Do not change.
	lpd.internal.printcap		Do not change.
	lpd.max.connections	3	Maximum number of connections.
	lpd.nonstandard-timeout	3	Enables use of lpd timeout other than default of 60 seconds
	lpd.nonstandard-timeout.value	3	Alternate timeout value in seconds
maint	maint.savecore	3	Automatically compresses and saves any core files for debugging purposes
	maint.savecore.maxcore	3	Maximum disk space in MB occupied by saved core files
	maint.savecrash	3	Saves the system state at the time of a system crash. Crash dumps are saved in /var/crash.
Novell	novell.external	3	Number of Novell network to which this DocuPrint is physically connected
	novell.framing	3	Ethernet Frame type on Novell network
	novell.internal	3	Network number assigned to the DocuPrint server itself
	novell.pserver	3	Enables Print Server function on DocuPrint NPS/IPS
	novell.pserver.fs	3	Name of Novell File Server to which DocuPrint's Print Server attaches
	novell.pserver.name	3	Name of DocuPrint's Print Server
	novell.pserver.passwd	3	Password of DocuPrint's Print Server for attaching to Novell File Server
	novell.pserver.queue	3	Novell queue name from which DocuPrint Print Server receives jobs
	novell.rprinter	3	Enables Remote Printer function on DocuPrint NPS/IPS
	novell.rprinter.ps	3	Name of Novell Print Server to which DocuPrint's Remote Printer attaches
prtcon	prtcon.cmdtool	3	Places a cmdtool option in the OpenWindows menu (Background UNIX shell)
	prtcon.cmdtool.maxLogFileSize	5	
	enableGUI	3	Enables the graphical user interfacr (GUI)
sequencer	sequencer.attempts	3	Number of times Sequencer can Restart before current job is Held

Table 2-3. **Changeable parameters for Configure utility (Continued)**

Package	Parameter	Best option	Purpose of parameter
	sequencer.reserve-pages	3	Size in MB of /var/db/reserve_pages
snmp	snmp.enable	3	Enables SNMP agent support
	snmp.operator	5	
	snmp.service	5	
	snmp.trapv1	5	
	snmp.trapv2	5	
spd	spd.enable	3	Enables socket/port printing.
	spd.nonstandard-timeout	3	
	spd.nonstandard-timeout.value	3	
	spd.port1.printer	3	
	spd.port1.value	3	
	spd.port2.enable	3	
	spd.port2.printer	3	
	spd.port2.value	3	
	spd.port3.enable	3	
	spd.port3.printer	3	
	spd.port3.value	3	
tcpip	tcpip.dns	5	Enables use of Domain Name System
	tcpip.enablemulti-devices	3	Enables TCP/IP on multiple devices
	tcpip.extradevices	3	Specifies devices for the tcpip.extradevices parameter
	tcpip.ftp	3	Enables use of File Transfer Protocol to the DocuPrint Server (necessary for downloading new Xerox print client and for DigiPath.)
	tcpip.neton	5	Enables general TCP/IP access to the DocuPrint NPS/IPS (weakens security; not recommended, incompatible with xclient)
	tcpip.ntp	5	Enables use of Network Time Protocol
	tcpip.router	3	IP address of local TCP/IP router
webui	webui.enable	3	Enables web UI.
xclient	xclient.enable	3	Enables use of the DocuPrint print client

Table 2-3. **Changeable parameters for Configure utility (Continued)**

Package	Parameter	Best option	Purpose of parameter
xgf	xgf.forceon		Do not change.
xipp	xipp.enable	3	Enables special XIPP prescan filter for use with Xerox Documents on Demand (XDOD)
system	ACOPaper	5	ACO market region can use either US or metric sized paper
	FontDisk	4	Places /imagerfonts on this disk number
	FormsDisk	4	Places /var/db/forms and the VIPP (XGF) customer-installed files in /usr/xgf on this disk number
	HostName	4	TCP/IP hostname
	IOT	4	4050, 4090, 4850, 4890, DP96, 4635, 4180, 92C (Changing this parameter is not supported.)
	IPAddress	4	IP Address of DocuPrint server
	MarketRegion	4	USCO, XCI, RX, or ACO
	NetDevice	4	Ethernet=le0, le1, le2; Token Ring=tr0, tr1, tr2; 100MB Ethernet=hme0, hme1, hme2; Fiber Optic FDDI=nf0, nf1, nf2
	Netmask		TCP/IP netmask
	PrinterName	4	Default PrinterName
	ReservePagesDisk	4	Places /var/db/reserve_pages on this disk number
	SpoolDisk	4	Places /var/spool on this disk number
	TimeZone	4	Timezone from /usr/share/lib/zoneinfo

Options

The Configure utility provides the following options:

Printing Configuration Reports: Options 1 and 2

Options 1 and 2 print two different types of configuration reports:

- **Option 1:** Prints a report of the routine installation questions, with the answers given.
- **Option 2:** Prints a report of all the configuration parameters with their names and values.

The parameters are grouped by package (a package is a named piece of the DocuPrint NPS/IPS software). The parameters at the end of the list are in a special category called “System Parameters.” These are parameters of the entire system, such as the printer type. Each parameter in this report has a name (such as FontDisk or tcpip.ftp) that you use if you want to change the value with Option 5. Each value is enclosed in double-quotation marks. A series of pound signs appears instead of the password values.

When you select Option 1 or 2, Configure prepares a report and submits it to the JPM for printing. At least one tray must also be set, and queueing and printing must be turned on in order for a report to print. The report is delivered to the sample tray. If queueing is turned off, you receive a cryptic error message instead.

Reviewing Questions and Answers: Options 3 and 4

Routine configuration values are supplied in answer to questions posed during the installation process. If you decide to change one of the values on the report printed by Option 1, use Option 3 or 4 as follows:

- **Option 3:** Review or change standard installation questions. When you choose this option, you are asked if you want to review all the questions. If you enter **n**, you will be asked for the name of a package (a package is a named piece of the DocuPrint software) from a list. For example, select Novell to review only the Novell questions. Each question is presented along with the current answer in brackets: [Y].
 - To keep the current answer, select <ENTER>. If, however, you have an Appletalk Phase 2 network and you want to retain the old zone name, you must retype it when you are prompted for an AppleTalk zone name. Otherwise, you produce an empty zone name.
 - To change the value, enter a new answer. You can enter **?** for helpful information about the parameter. If you make any changes, you are presented with the list of affected packages and asked to confirm the changes. If you enter **y**, the system is reconfigured and you are asked to reboot.
- **Option 4:** Review or change key system parameters. When you choose this option, you are presented with the questions for key system parameters such as the IP address. Each question is presented along with the current answer in brackets: [Y].

- To keep the current answer, press <ENTER>.
- To change the value, enter a new answer. Enter **?** for helpful information about the parameter. If you make any changes, you are presented with the list of affected packages and asked to confirm the changes. If you enter **y**, the system is reconfigured and you are asked to reboot.

Editing Individual Parameters: Option 5

All parameters can be changed using Option 5. (Routine parameters can be changed by using Options 3 or 4.)

When you select Option 5 you see a list of parameter names and values, grouped by package name as in the report printed by Option 2. Like the printed report, a series of pound signs appear instead of the password values. A command prompt displays after the names and values are displayed. You can enter any of the following commands:

- ?** Displays the list of commands.
- D** Redisplays the list of all parameters and values.
- DP** Displays the list of parameters and values for a particular package only.
- M** Modifies the value of any parameter.
- H** Displays helpful information about any parameter.
- C** Commits any changes made to values.
- Q** (Quit.) Exits the editing parameters function.

The following guidelines apply:

- You can change the value of any number of parameters, then commit all the changes at once. The relevant parts of the system are reconfigured when you commit the changes.
- The display produced by the **D** or **DP** commands places an asterisk next to values that have been changed.
- When you enter the **H** or **M** commands, you are asked for a parameter name. Enter the name exactly as it appears in the list.

- Most parameter names begin with the name of a package, and many have multiple parts separated by periods (such as tcpip.ftp or maint.savecore.maxcore).
- After you have given a value for a parameter, you may be prompted for values that are needed based on the value that was most recently supplied.
- Not all of the parameters are useful. Some parameters may not have any effect unless another parameter is set to a particular value (for example, the Novell parameters do not have any effect unless novell.rprinter or novell.pserver is set to “Y”).

CAUTION

Some parameters may have harmful effects if certain steps are not taken. Read any instructions that are presented very carefully. Note that the IOT type cannot be changed.

Reinitializing Software: Option 6

If something on the DocuPrint NPS/IPS system (for instance, the Job Pool Manager database) becomes corrupted in ways that the automatic repair software cannot detect or process, you may be able to repair the problem by reinitializing the software.

CAUTION

Reinitializing the software can result in the permanent loss of customer data such as data in the Job Pool Manager, virtual printer definitions, option values, and so forth. Do not use the reinitialize option without careful consideration. Try rebooting to verify that the problem still exists before you reinitialize.

NOTE: If you really do have a software corruption problem, reinitializing may not repair it. Some problems can be repaired only by reinstalling the software directly from the original media (CD-ROM).

To reinitialize the software:

1. Select Option 6.
2. To reinitialize just one package, enter **n** (the default).
3. Select the name of a package from the list presented, or select <ENTER> to return to the menu.

Saving and Restoring Values: Options 7 and 8

To back up the values of the configuration parameters, you must have a formatted diskette available to dedicate only to the backup. It is a good idea to keep copies of the printed reports along with the backup diskette.

To create a backup diskette, perform the following:

1. Insert the diskette.
2. Select Option 7 and follow the prompts.

To restore from a backup diskette, perform the following:

1. Insert the diskette.
2. Select Option 8 and follow the prompts.

After the data are retrieved from the diskette, the system is reconfigured based on the restored values.

- Reboot the system.
- To leave Configure, select Option 9 from the menu. If you selected Option 5, enter **Q** to return to the main menu, then select Option 9.

NOTE: Whenever the system is reconfigured, Configure terminates with a message that instructs you to reboot. Be sure to restart the system as directed. .

Configure Utility example for changing the hostname

To change the TCP/IP hostname for your system:

1. At the PS-Admin> prompt, Enter **stop queueing** and wait for any print jobs in progress to complete.
2. Enter **Configure**.
3. Enter the Superuser password at the prompt.
4. Select option 4.
5. Select enter for any question that is not about the hostname to retain the previous answer.
6. Enter a new host name when prompted.
7. Enter **y** to confirm the change and reconfigure the system.
8. Enter **restart system**.

Setting up TCP/IP Socket Printing

Socket Printing allows you to set up three separate ports on the DocuPrint NPS/IPS system (for example, 9100, 9101, and 9102). Use the Configuration utility `spd` package to define the ports. Each port can be configured to submit jobs to the default printer or the user can specify a specific virtual printer. A non-standard timeout value may be specified if required, or if problems that are timeout related occur on the user system.

Print submissions to Socket Printing may be made by using Windows 2000 Network printing, a port 9100 submission tool, or other methods that comply with the Port 9100/Socket Printing TCP standards. The print data may be of any standard type recognized by the system including, PostScript, PCL, and plain text. Once a connection is established to the printer, all data received is considered part of the print data. The job will be submitted after the EOF or connection is closed on the socket. A print job is opened at the controller when a connection is established. If the connection times out, the job will be aborted, but a Job ID will already have been assigned.

Once a connection is established a message is posted to the DocuPrint log with the connection details, including the host IP address and the virtual printer the job will be submitted to on the DocuPrint system. No real-time job error data will be returned to the submitting host about the job.

NOTE: Printing IPDS jobs via socket is not supported.

Recovering the Job Pool Manager database

The Job Pool Manager software manages the database for the jobs. If you see any of the following messages, the database may have become corrupt:

- Message in the DocuPrint Print Service window, after you enter the List Documents command:
***RPC error SunRPCBinding error contacting Job Pool Manager: requested service not available
- Message in the Printing Activity Log Window:
***Error: SunRPCBinding.Error[requested service not available]
- Messages in the log, `/var/log/DocuPrint`:

...ALERT Job Pool Manager: Unrecoverable Database error...

The Job Pool Manager automatically recovers by replacing the corrupted database with a new one. After the recovery, execute the **Set Tray** and **Start Queueing** commands, even if the **Show Status** command indicates the tray setting is normal.

If the Job Pool Manager cannot successfully recover, you can follow these steps to recover the database:

1. At the PS-admin> prompt in the DocuPrint Print Service window, enter **Configure**.
2. Enter the Superuser password when prompted.
3. Select option 6.
4. Enter **n** when prompted in order not to initialize all values.
5. Enter **jpm** when prompted for which package.
6. Enter **Y** when prompted "Are you sure you want to re-initialize 'jpm'?"
7. Enter **restart system**.

Enabling and disabling remote service

If your site is set up to use the external modem for service by remote technicians, you need to enable the modem so that the technician can dial into your system. Prior to enabling the modem, be sure to use the **Stop All** command so that printing and queueing are stopped during the remote service session.

When the remote service session is complete, you can disable the modem and enter the **Start All** command to resume printing and queueing.

If security is a concern, the modem can be turned off and the cable can be physically disconnected from the system when it is not being used.

NOTE: Depending on the commands that the technician uses, the printer may start up during the remote service session. You should not attempt to operate the system or perform any tasks at the printer during the remote service session. Ensure that everyone working in the printer area knows that the system is undergoing service and that they should not attempt to work with the printer.

Enable modem command

After you use the **Stop All** command to stop printing and queueing, use the **Enable Modem** command to enable the technician to dial into your system.

NOTE: You may need to physically connect the modem cable and power on the modem prior to enabling it. Connect the modem cable to the A port on the back of the processor.

Ensure that the telephone line is connected to the modem and to the telephone jack.

The modem power cable must be connected to a power outlet and the modem must be powered on.

Access level Administrator

Syntax Enable modem

You are prompted to enter the UNIX root password.

Arguments None

Modem switch settings On the bottom of the modem are DIP switches that must be properly set for the modem to function. The recommended settings for the US Robotics Courier V. Everything modem are:

Table 2-4. Modem DIP switch settings

Switch	Setting	Position
1	OFF	UP
2	OFF	UP
3	ON	DOWN
4	OFF	UP
5	OFF	UP
6	OFF	UP
7	OFF	UP
8	ON	DOWN
9	ON	DOWN
10	OFF	UP

Disable modem command

Use the **Disable Modem** command to disable port A for incoming calls. This command terminates the existing modem connection and refuses any future connection. After you use the **Disable Modem** command, use the **Start All** command to start printing and queueing.

Access level Administrator

Syntax Disable Modem

You will be prompted to enter the UNIX root password.

Arguments None

NOTE: If it is the policy at your site to disconnect the modem for security reasons, power off the modem and, if required, physically disconnect the modem cable from your system once the remote session is complete.

Enable Remote Shell command

If the Xerox service technician requires access to the UNIX shell on your printer controller while servicing it using the modem, you need to enter this command.

Access level Administrator

Syntax Enable Remote Shell

You are prompted to enter the UNIX root password.

Arguments None

CAUTION

Do not use this command unless directed to do so by a Xerox service technician. It allows access to your system software.

Disable Remote Shell command

Use this command to disable access to the UNIX shell once the Xerox service technician has completed the remote service session.

Access level Administrator

Syntax Disable Remote Shell
You are prompted to enter the UNIX root password.

Arguments None

3. Starting and stopping the system

This chapter describes how to start and stop your DocuPrint NPS/IPS printing system. It addresses the proper methods of powering the system on and off, starting and stopping print jobs, shutting down the system, and dealing with power failures.

If you have a DocuPrint EPS system with the NPS/IPS extension software, and you want to switch between EPS and NPS/IPS, refer to the *DocuPrint 2000 Series EPS NPS/IPS Extension Operations Guide*.

Powering on the system

Before you power on the system, ensure the following has been completed:

- The printer controller and monitor are connected to dedicated power receptacles.
- The printer cable is connected securely to the connector on the back of the printer controller. If the cable is not connected, make sure the printer and printer controller are powered off. Then connect the cable.

CAUTION

Do not connect the printer cable to the printer controller when either the printer controller or the printer is powered on; you could destroy the interface card in the printer controller.

NOTE: When you restart the system, the software and printer may not be communicating properly. When you enter Show Status, the message "No valid IOT status is available" displays, while the printer itself may display a "Ready to print" message. In this case, you should restart both the printer and the controller.

To power on the printer controller:

1. Power on the monitor.
2. Power on the printer controller switch located on the back of the CPU.

NOTE: You should not boot or restart the system unless it is connected to the printer that is powered on with the controller. If you do, tray settings will be lost.

After you turn the printer controller switch to On, the Power On Self Test (POST) runs. The keyboard LEDs flash, and then the boot process begins.

If the printer power switch is in the on position, the printer controller controls when the printer is powered on during the boot process.

CAUTION

Do not perform any actions at the printer until the boot process completes and the DocuPrint Print Service window is displayed.

After the boot process is complete, the DocuPrint user interface (UI) appears.

NOTE: On some types of controller, it takes about a minute before the monitor turns on. Do not restart the boot process during this time.

Powering off the system

Power off the system by using the **Halt System** command in the DocuPrint Print Service window or by selecting [Shutdown] from the background menu.

CAUTION

Do not power off the printer controller without following one of the procedures below to halt the system first. Failure to follow the proper procedures may result in damage to the software and hardware.

Using the Halt System command to stop the system

Follow these steps to use the **Halt System** command to stop the system:

1. In the DocuPrint Print Service window, at the PS> prompt, enter **privilege operator**.
2. Enter **stop queueing**.
3. Enter **list documents**.

Wait for any documents currently pending or being printed to complete.

4. Enter **halt system**.
5. Once the OK prompt is displayed, switch off the power using the power switch located on the printer controller CPU unit, or enter **power-off** at the OK prompt.

Using the background menu to stop the system

Follow these steps to use the workspace pop-up menu to stop the system.

1. In the DocuPrint Print Service window, at the PS> prompt, enter **privilege operator**.
2. Enter **stop queueing** to stop queueing.
3. Enter **list documents**.

Wait for any documents that are pending or being printed to complete.

4. Move the cursor to the background area outside any open windows.
5. Press and hold the right mouse button.
6. Select [Shutdown] from the pop-up menu, and release the right mouse button.
7. Select [Confirm].
8. Select [Continue].
9. When the OK prompt is displayed, switch off the power using the power switch located on the printer controller CPU unit, or enter **power-off** at the OK prompt.

The printer is powered off automatically when the printer controller is powered off. Be sure also to turn off the printer power switch if any equipment is to be disconnected.

Powering the system off and on after a power failure

When a power failure occurs, you must power off all of the DocuPrint NPS/IPS system components.

CAUTION

If you do not power off all components, a power surge may damage them when power is restored.

Power the components back on only after power has been restored. To restart your printer after a power failure, refer to “Powering on the system,” in this chapter.

Stopping and starting job processing

Use the **Stop** and **Start** commands to control printing and queueing. These commands apply to jobs from all data streams. Refer to the *Guide to Managing Print Jobs* chapter “Managing jobs” for detailed information.

NOTE: The very first job to print after a restart or a diagnostics session may take up to 30 to 60 seconds longer than usual. Subsequent jobs print without delay.

Restarting the sequencer, IPDS parser, and the system

If your printer is unresponsive, use the **Restart Sequencer**, **Restart IPDS Parser**, or **Restart System** command. You can use the **Restart Sequencer** command when a job appears to be “hung.” The job is placed in a Held state. Use **Restart IPDS Parser** to attempt recovery from a problem with the IPDS parser process.

NOTE: Use the Restart Sequencer or Restart IPDS Parser commands before using the Restart System command, because these commands restart a software module without restarting the entire system.

Restart Sequencer command

The **Restart Sequencer** command restarts the system sequencer without restarting the entire system. It will place the current job in a “Held” status. This is useful if a job appears to be “hung.” Depending on the value of the “sequencer.attempts” in your configuration, you may need to repeat the command to change the job status to “Held.”

NOTE: Sometimes a large job takes a long time to decompose. If the job status is “Being Received” it is not “hung,” a restart of the sequencer is not needed for this job.

Access Administrator or operator

Syntax Restart Sequencer <restart option>

Argument <restart option>

To terminate the Sequencer before the restart, specify “kill.”

Restart IPDS Parser command

Use the **Restart IPDS Parser** command to restart the IPDS parser so that new option settings can take effect. You can also use this command to recover from a problem with the IPDS parser process.

Access Administrator or operator

Syntax Restart IPDS Parser

Arguments None

Restart System command

The **Restart System** command reboots and restarts the printer controller. A confirmation is required before this command will execute. The monitor displays the prompt, “Do you really want to restart the system? (Y/N).” Jobs remain in the queue and are processed when the system is fully booted.

CAUTION

Restarting the system completely shuts down and reboots the printer controller.

Access Administrator or operator

Syntax Restart System

Arguments None

4. DocuPrint NPS/IPS on a Novell network

This chapter describes how to prepare your system for use on a Novell network, and identifies some of the things you must consider before the service representative configures DocuPrint NPS/IPS for a Novell network.

Before configuring DocuPrint NPS/IPS on a Novell network, first determine whether you want the DocuPrint NPS/IPS to function as a Print Server, a Remote Printer, or both.

Choosing a Print Server or Remote Printer configuration

The following contrasts the Print Server (PSERVER) configuration with the Remote Printer (RPRINTER) configuration for your DocuPrint NPS/IPS.

- The PSERVER configuration uses a licensed connection to a File Server. The RPRINTER configuration connects to a Print Server, and does not require a regular client connection.
- Using the PSERVER configuration, DocuPrint NPS/IPS can obtain job attributes from the Novell queue.

The RPRINTER configuration cannot do this, and this leads to some irregularities such as no job and submitter names, as well as an inability to select duplex through the submission interface.

- The setting of the Novell banner pages switch operates successfully using PSERVER (this toggles the ElideHeader attribute).

If Banner Page is requested with RPRINTER, DocuPrint NPS/IPS prints a Novell-generated ASCII banner page as the first page of a job, and prints the entire job as an ASCII file (500 pages could be generated when requesting a banner page regardless of the actual file contents.)

- With PSERVER, multiple copies are requested as a job attribute; DocuPrint NPS/IPS receives only one copy and prints multiple copies.

With RPRINTER, because most remote printers cannot understand a request for multiple copies, the Print Server sends the job multiple times to print multiple copies, tying up network and DocuPrint NPS/IPS resources as the file is processed.

- With PSERVER, a DocuPrint NPS/IPS can receive jobs from only one print queue on one File Server, but users can submit jobs to different DocuPrint NPS/IPS virtual printers using Novell forms. The administrator uses the PRINTDEF program to create forms with the same name as DocuPrint NPS/IPS virtual printers. Users then select a virtual printer by selecting a form with the same name using the User Tools program in the NetWare Tools folder of Windows, or the -F option in the DOS CAPTURE command.

With RPRINTER, the Print Server can direct jobs to different virtual printers, from multiple queues, possibly on multiple file servers.

- The PSERVER configuration allows the submitter to determine when printing is complete. Jobs are retained in the Novell queue until DocuPrint NPS/IPS completes printing them. This may fill up the queue in some environments.

The RPRINTER configuration informs the submitter only when the job has been submitted, even though it may print days later.

- PSERVER requires that unencrypted login is enabled on the Novell File Server to which PSERVER connects. Regular Novell clients will still use encrypted passwords.

RPRINTER does not require that unencrypted logins be permitted.

The following table lists the differences between DocuPrint NPS/IPS as a print server or as a remote printer.

Table 4-1. Print server and remote printer differences

DocuPrint NPS/IPS as a PSERVER	DocuPrint NPS/IPS as an RPRINTER
1 Functions like a Novell print server.	1 Functions like a Novell remote printer.
2 Connects to a Novell file server and consumes a licensed connection.	2 Connects to a Novell print server without consuming a licensed connection.
3 Reads the Novell print queue directly and obtains all the job parameters.	3 Cannot read the Novell print queue; receives only the job data, not the data from the queue entry.
4 Not necessary for the user to disable the print job banner.	4 User must disable the banner for each print job. If not disabled, the job prints incorrectly.
5 No unusual delays in output of print jobs.	5 May be delays in output of print jobs when jobs are not sent back-to-back. The system views the start of a print job as the end of a previous job.
6 Services only one queue on one file server.	6 May service multiple print queues through the Novell print server.
7 Supports user notification of the end of a print job (completion of printing).	7 Notifies user only when job submission completes (does not notify user of print completion).
8 Can send a job ticket that references one file on the Novell file server to which the DocuPrint NPS/IPS is connected.	8 Cannot reference files on a Novell file server.

Configuring DocuPrint NPS/IPS as a PSERVER

If you configure the DocuPrint NPS/IPS as a PSERVER, do the following:

1. Using PCONSOLE, define a print server with a name and password (optional).
2. Using PCONSOLE, create a queue.
3. Using PCONSOLE, define one printer as Remote Other/Unknown for the print server, and define the printer to service the print queue. Printer name is not important, but it is best to use the same name for both the printer and the queue.
4. Create a virtual printer that matches the queue name as a default virtual printer. (This supports the use of form names that do not match the name of a virtual printer.)
5. Create form names in PRINTDEF, and create a virtual printer with the same name as each form.
6. (Optional) Define a list of users that should be notified when you enter the **Stop Queueing** command, which disables print job submission. This list must be associated with the single printer defined above.
7. Supply the service representative with the required installation parameters, as identified in the checklist provided in your *DocuPrint NPS/IPS Installation Planning Guide*.

In the following illustration, the queue, virtual printer, and specified form are configured with the same name. The user sends a print job that specifies a form named Gazette through the LPT1 port to the Gazette queue. This job is assigned to the Gazette virtual printer.

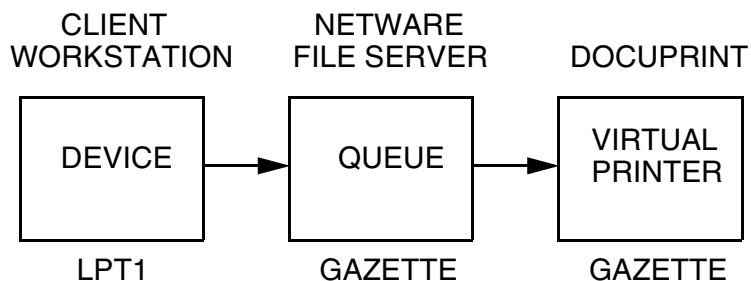


Figure 4-1. Diagram of sample PSERVER configuration

Configuring DocuPrint NPS/IPS as an RPRINTER

If you configure the DocuPrint NPS/IPS as an RPRINTER, do the following:

1. Ask users to submit print jobs using the job ticket client software and to disable the banner for each print job, so that the jobs print correctly and so that attributes such as SenderName are set correctly.
2. Match virtual printer names to the Novell-defined printer names. There must be at least one virtual printer defined with the same name as a defined remote printer.
3. Define the print queue to remote printer mapping using PCONSOLE. Select printer type to be Remote Other/Unknown for DocuPrint NPS/IPS. It is best to use the same name for the print queue, the remote printer, and the virtual printer.
4. Supply the service representative with the required installation parameters, as identified in the checklist provided in your *DocuPrint NPS/IPS Installation Planning Guide*.

In the following illustration, the queue, remote printer, and virtual printer are configured with the same name, and the specified printer is set to print duplex. The user sends a print job through the LPT1 port to a queue named DPDuplex, which is sent to the DPDuplex remote printer and assigned the DPDuplex virtual printer.

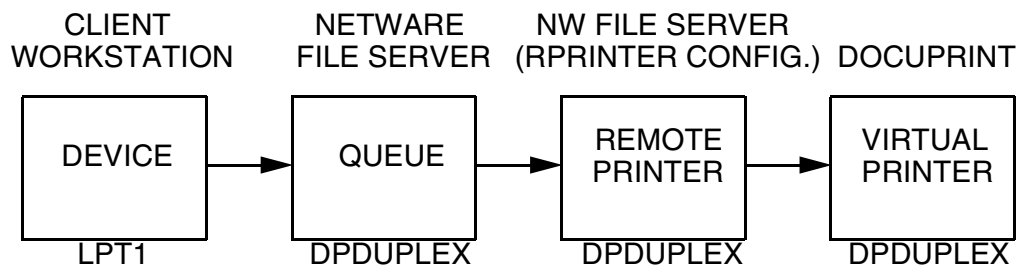


Figure 4-2. Diagram of sample RPRINTER configuration

Supporting DocuPrint NPS/IPS on the Novell file server

There are a number of tasks you perform on the Novell file server to support the DocuPrint NPS/IPS as either a print server or a remote printer:

- With DocuPrint as a PSERVER you must allow unencrypted password login on the file server. Enter the following command at the file server console prompt and in the AUTOEXEC.NCF file:

set allow unencrypted passwords=on

NOTE: Set this command even if you do not establish a print server password. Novell clients that use encrypted passwords are unaffected by this change and will continue to use encrypted passwords.

- Do not configure the file server to support IPX checksums or NCP packet signatures. Set these options to 0 or 1 so that the server performs these options only when the client requests them. The default value is 1.
- Do not set the watchdog interval to less than one minute. Longer intervals may cause the DocuPrint NPS/IPS to be logged out.
- If the print queue contains 250 jobs on a regular basis, set the Maximum File Locks Per Connection to a value greater than 250. The default value is 250.
- If DocuPrint NPS/IPS is configured as an RPRINTER, define forms using PRINTDEF with names matching virtual printer names.

NOTE: DocuPrint NPS/IPS supports native connection to Novell 3.12 file servers. However, to run DocuPrint NPS/IPS with Novell 4.X servers, the Novell Server must be configured to run Bindery Emulation.

5. Setting system defaults

This chapter describes the process for setting defaults for print features and system configuration. These default settings allow you to customize the way the system accepts information from host or network, displays information to the user, and handles print jobs without specific overriding instructions.

Before sending print jobs to your NPS/IPS, you need to set system defaults for the various document parameters associated with print jobs. The NPS/IPS provides the following commands for this purpose:

- **Set Default Media** defines the default media size, type, color, and weight. Show Default Media lists the currently defined default media.
- **Set Tray** allows you to specify what type of media is loaded in your printer feeder trays. There are several variations of this command.
- **Set Stacker to Group** and **Unset Stacker** allow you to define how jobs are delivered to the printer stackers.
- **Set Option** sets the values of various printing options. You can view the current setting of these options with the **List Options** command and print them with the **Print Options** command.
- **Change Imager Parameters** and **Change PCL Imager Parameters** adjust the imaging level of print jobs. You can show the current values and restore the defaults.
- **Change PCL Parameters** allows you to define the environment for PCL printing.

The following sections provide the syntax and arguments for these commands.

Setting default media

The **Set Default Media** command (administrator or operator level) defines the default media size, type, color, and weight.

The **Show Default Media** command (administrator, operator, or user level) lists the default media for the printer.

These default settings are applied to media trays by invoking the **Set Tray *n* Default** command.

Set Default Media command

Use the **Set Default Media** command to define the default media size, type, color, and weight for jobs submitted without media specifications. This command may not take effect immediately on jobs already being processed. A **Restart Sequencer** command is the recommended method for insuring that media has been changed.

Access level Administrator or operator

Syntax Set Default Media <size> <type> <color> <weight>

Arguments The following arguments are available:

- <size>
Sets the size of the default media.
 - Acceptable standard size values for the models 4850, 4890, or 92C are: “USLetter,” “USLegal,” “A4.” Acceptable custom paper sizes (n x n specified in millimeters) range from 8 by 10 inches / 203 by 254 mm to 8.5 by 14 inches / 216 by 356 mm.
 - Acceptable standard size values for the models 96, 4635, or 180 are: “USLetter,” “USLegal,” “USLedger,” “Tabloid,” “A3,” “A4.” Acceptable custom paper sizes (n x n specified in millimeters) range from 7 by 10 inches / 178 by 254 mm to 17 by 14 inches / 432 by 356 mm).

- Acceptable standard size values for the 2060 are: “USLetter,” “USLegal,” “USLedger,” “Tabloid,” “A3,” “A4.” Acceptable custom paper sizes (n x n specified in millimeters) range up to 7.2 by 19.2 inches / 182 mm by 488 mm. Specific information regarding media supported by the 2060 printer are listed in the *System Overview Guide*.
- <type>
Sets the default media type. Use a text string to specify the media type. Enter double quotation marks (“”) to leave the string empty. Valid types for all DocuPrint NPS/IPS systems include “transparency,” “plain,” “coated,” “drilled.”
NOTE: When you specify a media type from a client, and you use the prefinish value, the word “plain” is equivalent to a blank media type.

Additional valid types for the 96, 4635 and 180 include “precut,” “drilled-precut,” “#hole,” and “ordered#.” The # symbol is replaced by a number to indicate either the number of holes or the number of items in the ordered set.
- <color>
Sets the color of the default media. Use a text string to specify the color.
- <weight>
Sets the weight of the default media. It is recommended that you specify the weight in grams per square meter (gsm), although there is no system restriction in the unit of measurement you use. “0” indicates no preference.

Example This example sets the default media to USLetter, white:

```
PS-op>set default media usletter "white 0"  
Site default medium is USLetter::white
```

Show Default Media command

Use the **Show Default Media** command to show size, type, color, and weight for the default media.

Access level Administrator, operator, user

Syntax Show Default Media

Arguments None

Example This example shows the output of the **Show Default Media** command:

```
PS-op>show default media
Site default medium is USLetter::white:75
```

Setting feeder tray attributes

The **Set Tray** command and related commands allow you to specify what type of media (that is, paper stock) is loaded in your printer feeder trays. You must use the **Set Tray** command whenever you change the media in a tray. You can also match the attributes of one tray to those of another tray.

*NOTE: The **Set Tray** command and related commands cannot be used for a tray that is being used by the current job, or while the printer is warming up.*

For instructions on loading feeder trays, refer to “Loading paper” in your *Guide to Performing Routine Maintenance*.

When jobs are submitted to the system, media attributes define the media required. If the requested media is not currently defined for the tray, the job is ineligible. You can use the command **List Documents Ineligible** to identify jobs waiting for different media. For more information on how media attributes are applied to a job, refer to your *Guide to Managing Print Jobs*.

Set Tray and Set Tray Default commands

Use the **Set Tray** command to specify what type of media is loaded in your printer feeder trays.

Before using this command ensure that all trays are in the feed position.

NOTE: If you do not indicate the color or weight, the system uses the values of the default media.

Access level Administrator or operator

Syntax Set Tray <n> <size> <type> <color> <weight>
Set Tray <n> Default

Arguments The following arguments are available:

- <n>
Indicates the number of the paper tray, for example “1” or “2.”

- <size>
Indicates the size of the media. If you specify “default,” the type, color, and weight are set to the default media, and the size matches the tray setting.

Acceptable standard size values for the models 4850, 4890, or 92C are: “USLetter,” “USLegal,” “A4”. Acceptable custom paper sizes (n x n specified in millimeters) range from 8 by 10 inches / 203 by 254 mm to 8.5 by 14 inches / 216 by 356 mm.

Acceptable standard size values for the models 96, 4635, or 180 are: “USLetter,” “USLegal,” “USLedger,” “Tabloid,” “A3,” “A4.” Acceptable custom paper sizes (n x n specified in millimeters) range from 7 by 10 inches / 178 by 254 mm to 17 by 14 inches / 432 by 356 mm.

Acceptable standard size values for the 2060 are: “USLetter,” “USLegal,” “USLedger,” “Tabloid,” “A3,” “A4.” Acceptable custom paper sizes (n x n specified in millimeters) range up to 7.2 by 19.2 inches / 182 mm by 488 mm. Specific information regarding media supported by the 2060 printer are listed in the *System Overview Guide*.

- `<type>`

Sets the media type. Use a text string to specify the media type. Enter double quotation marks (""") to leave the string empty. Valid types for DocuPrint NPS/IPS systems include "transparency," "plain," "coated," "drilled" and any custom type defined by a text string.

NOTE: When you specify a media type from a client, and you use the prefinish value, the word "plain" is equivalent to a blank media type.

The media types "transparency," "envelope," "labels," and "simplex" treat a job as a simplex job. The type "simplex" forces a duplex or mixed plex job to print simplex for that media.

Additional valid types for the 96, 4635 and 180 include "precut," "drilled-precuttab," "#hole," and "ordered#." The symbol # is replaced by a number to indicate either the number of holes or the number of items in the ordered set.
- `<color>`

Indicates the color of the media. Use a text string to specify the color.
- `<weight>`

Indicates the weight of the media. It is recommended that you specify the weight in grams per square meter (gsm), although there is no restriction on the type of unit used. "0" indicates no preference.

NOTE: If the user who submits the job specifies a weight in pounds (lbs.), for example "20," and the tray definition uses grams per square meter, for example "75," the job is ineligible.
- Default

Sets tray *n* to the appropriate size (USLetter, USLegal, etc.) to match the way the hardware has been set. The type, color and weight are set to match the values of the default media.

Example The following example sets feeder tray 1 to USLetter, white, no type indicated, no weight preference:

```
PS-op>set tray 1 usletter "" white 0
Tray 1 set to USLetter::white
```

Set Tray <n> Tray <m> command

Use the **Set Tray <n> Tray <m>** command to set the attributes of tray <n> to the same values as those that were set for tray <m>.

Access level Administrator or operator

Syntax Set Tray <n> Tray <m>

Arguments <n> <m>

Assigns the attributes of tray <m> to tray <n>

Example This example sets the attributes of tray 1 to be the same as those of tray 2:

```
PS-op>set tray 1 tray 2
Tray 1 set to match Tray 2
```

Set Tray <n> Position <m> command

Use the **Set Tray <n> Position <m>** command to specify the position, in an ordered set, of the piece of stock at the top of the tray <n> Position <m>

NOTE: This command is generally not required for ordered stock applications, but may be used to save stock.

Before using this command ensure that all trays are in the feed position.

Access level Administrator or operator

Syntax Set Tray <n> Position <m>

Arguments The following arguments are available:

- <n>

Indicates the number of the paper tray. The tray must already have paper type set to “<anything>-ordered#,” where # is the total number of items in a complete set.

- *<m>*
Sets the item at the top of tray *n* to the appropriate order number in the ordered set. The value *<m>* must not be greater than the number (#) specified in the “ordered#” field of the paper type specified for the tray.

Example This example sets the item at the top of feeder tray 1 to number 3 in the current ordered set:

```
PS-op>set tray 1 position 3
Tray 1 set to Position 3
```

Set Tray *<n>* PurgeNo Purge

Use the **Set Tray *<n>* PurgeNo Purge** command to specify whether the tray can be used for paper purging. Use this command when a tray contains preprinted or special stock that you do not want used when the system purges the fuser.

NOTE: Define at least one tray as a purge tray.

Access level Administrator or operator

Syntax Set Tray *<n>* PurgeNo Purge

Arguments *<n>*

Indicates the number of the paper tray.

You can determine if a tray is currently set to be used for paper purging by using the **Show Status** command. The text “Purge Allowed” is shown as part of the tray status.

Set Tray From Virtual Printer Media command

Use the **Set Tray From Virtual Printer Media** command to match the media list for the specified virtual printer against paper sizes in trays. The command prompts you to assign the needed media to specific trays.

The command fails if there is no media list for the virtual printer or if it cannot match all the sizes in the media list to real trays. If you set the same tray to more than one media, the last command overrides earlier commands.

- Access level** Administrator or operator
- Syntax** Set Tray From Virtual Printer Media <VP>
- Arguments** <VP>
Indicates the virtual printer.

Unset Tray <n> command

If you want the system to ignore a tray, use the **Unset Tray** command. To restore the tray to active status, use the **Set Tray** command.

- Access level** Administrator or operator
- Syntax** Unset Tray <n>
- Arguments** <n>
Indicates the number of the paper tray.
NOTE: It may take a moment for the tray to unset.

Setting stacker groups

You can configure stackers into groups.

Set Stacker To Group command

The **Set Stacker To Group** command allows you to define stacker groups.

Access level Administrator, Operator

Syntax Set Stacker To Group <stacker> <group>

- Arguments**
- <stacker>
Indicates the stacker number. The top tray is “0”. Additional stackers are numbered “1”, “2”, etc., depending on the number of stackers.
 - <group>
Indicates the stacker group. The maximum number of stacker groups is the same as the number of stackers, including the top tray.

Unset Stacker command

If you want the system to ignore a stacker, use the **Unset Stacker** command. To restore the stacker to active status, use the **Set Stacker to Group** command. Available only for systems with a top tray plus two stackers.

Access level Administrator or operator

Syntax Unset Stacker <*n*>

Arguments <*n*>
Indicates the number of the stacker.

NOTE: It may take a moment for the stacker to unset.

Setting printer options

The following commands control the printing options for your NPS/IPS. (Some options may not apply to your printer configuration.) Use **Set Option Help** to display the available printing options and the information you need to specify values.

Set Option command

The **Set Option** command assigns values to the printing options you specify. It may take a few minutes for an option to be set after you enter the command. A **Restart Sequencer** command is recommended for ensuring that an option has been changed.

Access level Administrator

Syntax Set Option <name> <value>

Arguments The following arguments are available:

- <name> <value>

Specifies the name and value of the option you want to set. Choose from the following:

- AdjustX <offset> <units>

Sets the horizontal image shift from the edge of the paper closest to the front of the printer as it is fed. “X” is the physical slow scan direction. For example, for letter or A4 paper, “X” is parallel to the short edge of the paper. For Ledger or A3, “X” is parallel to the long edge of the paper.

<offset> is the amount of the horizontal image shift. The default is 0. This value should normally be zero (0), but can be changed to temporarily compensate for printer misalignments until a service technician can adjust the printer.

<units> refers to the unit of measure used to specify the offset value. The following units are available; the default setting is “mm.”

- pt (points=72.27 to 1 inch)
- bp (big point=72 to 1 inch)
- pi (pica=12 points)

- el (elite=10 points)
- in (inches)
- pu (pixel units =1/300 inch, not pixels)
- fu (furlongs)
- mm (millimeters)
- AdjustY <offset> <units>

Sets the vertical image shift from the edge of the paper closest to the front of the printer as it is fed. “Y” is the physical fast scan direction. For example, for letter or A4 paper, “Y” is parallel to the long edge of the paper. For Ledger or A3, “Y” is parallel to the short edge of the paper.

<offset> is the amount of the vertical image shift. The default is 0. This value should normally be zero (0), but can be changed to temporarily compensate for printer misalignments until a service technician can adjust the printer.

<units> refers to the unit of measure used to specify the offset value. The following units are available; the default setting is “mm.”

 - pt (points=72.27 to 1 inch)
 - bp (big point=72 to 1 inch)
 - pi (pica=12 points)
 - el (elite=10 points)
 - in (inches)
 - pu (pixel units =1/300 inch, not pixels)
 - fu (furlongs)
 - mm (millimeters)
- AllowElideHeaders <“TRUE” | “FALSE”>

Refers to the suppression of header pages within a group of documents with the same sender name. The default setting is “TRUE.”
- AttributeNameForListDocs <attribute>

Refers to the text attribute to use for the List Documents command. The default setting is “SenderName.”
- BlueHighlight <RGB value for blue>

(4850, 4890, and 92C only) Refers to the RGB value for blue highlight color. The default setting is “R: 0.0, G: 0.0, B: 0.8820001.”

For blue highlight color to print correctly, the default RGB (print) value for this option should not be modified.

- **BrownHighlight** <RGB value for brown>

(4850, 4890, and 92C only) Refers to the RGB value for brown highlight color. The default setting is “R: 0.65, G: 0.1, B: 0.1.”

For brown highlight color to map correctly, the default RGB (4850, 4890, and 92C only) value for this option should not be modified.

- **CardinalHighlight** <RGB value for cardinal>

(4850, 4890, and 92C only) Refers to the RGB value for cardinal highlight color. The default setting is “R: 0.7000001, G: 0.03, B: 0.1.”

For cardinal highlight color to print correctly, the default RGB value for this option should not be modified.

- **CentsPerHeader** <cost per sheet>

Refers to cost per header page. If you enter a value, the cost information appears on the trailer sheet that prints at the end of a job. The default setting is “0.0.”

- **CentsPerNormal** <cost per sheet>

Refers to cost per document page. If you enter a value, the cost information appears on the trailer sheet that prints at the end of a job. The default setting is “0.0.”

- **CentsPerSecond** <cost per second>

Refers to cost per document decomposition time. If you enter a value, the cost information appears on the trailer sheet that prints at the end of a job. The default setting is “0.0.”

- **CentsPerTrailer** <cost per sheet>

Refers to cost per trailer sheet. If you enter a value, the cost information appears on the trailer sheet that prints at the end of a job. The default setting is “0.0.”

- **CyanHighlight** <RGB value for cyan>

(4850, 4890, and 92C only) Refers to the RGB value for cyan highlight color. The default setting is “R: 0.0, G: 0.8820001, B: 0.8820001.”

For cyan highlight color to print correctly, the default RGB value for this option should not be modified.

- **DebugLevel<level>**

Refers to the systemwide debug level. The default level is “0,” and the range of allowable values is 0 ... 15. Higher numbers result in more detailed debugging information.
- **DefaultCopies <number of copies>**

Refers to the number of copies of a document printed when one of the following commands is entered: Print Sample Document, Print Form Sample, Print Form List, Print Options, Print PCLFont Sample, Print Font Sample, and Print Font List. The default setting is “1.”
- **DefaultDarkness<level>**

Refers to default level for darkness control. The default setting is 0, and the range of allowable values is -1 .. 5.
- **DefaultHighlightColorRendering <“pictorial” | “presentation” | “colorToHighlight” | “colorTables” | “automatic”>**

(4850, 4890, and 92C only) Refers to the mapping of a three-dimensional color application (such as RGB) to the two-dimensional color application provided with highlight color printing. The default setting is “automatic.”

 - pictorial

Use this attribute to avoid color saturation problems with Decomposition Service forms.

Colors with a hue matching the map color are not changed.

Colors with a hue close to the map color are rendered with color, but with a saturation level that decreases as the hue shifts away from the map color.

Colors with a hue complementary to the map color are produced in shades of gray.
 - presentation

Refers to the ability to distinguish between different colors. This attribute is a good choice for charts and diagrams, as they typically use distinctly different colors. Colors with a hue that matches the map color will not be changed. There will be discontinuities that may produce undesirable results in pictorial material.

- colorToHighlight

This mapping attribute discards the hue information and preserves the saturation and value of the color application. Fully-saturated colors will turn into a solid highlight color despite which map color is in effect. This is useful for documents that only use spot color for emphasis.
- colorTables

This mapping attribute uses preset color tables to perform the mapping and is provided for compatibility reasons. This is used only for red, green, or blue highlight color toners.
- automatic

This attribute chooses a mapping method on an object-by-object basis; for example, it applies the pictorial mapping for pictures and the presentation mapping for other objects (filled areas, strokes, and text). This is the default.
- DefaultPaperTray <paper tray number>

Refers to the paper tray used for printing test patterns when the Print Test Pattern command is entered. The Print Test Pattern is available only in service mode. The default setting is “1.”
- DefaultPCLLanguageLevel <“PCL5e” | “PCL5c”>

Refers to the default PCL language level to be used for the system. For monochrome printers the setting is PCL 5e. For highlight color printers, use PCL 5c if you want to use the PCL 5c interpreter for printing PCL 5c jobs that specify highlight color. The default is PCL5e.
- DefaultPlex <“simplex” | “duplex” | “tumble duplex”>

Refers to whether documents, including test patterns and sample documents, print simplex, duplex, or tumble duplex. The default setting is “simplex.”
- DefaultPlexChangesDynamic <“TRUE” | “FALSE”>

Refers to whether the system will honor the plex changes specified in the PostScript or PCL code. Set to “True” to honor plex changes within the job. Set to “False” when you want to ignore the plex changes specified in the job’s PostScript or PCL.

- **DefaultPSLanguageLevel** <“1” | “2”>
Refers to which PostScript Language Level to use. The default setting is “2.”
- **DefaultRecoveryOffset** <“TRUE” | “FALSE”>
When “True,” a single page is offset from the rest of the job after any jam. When “False,” no sheets are offset. The default is “False.”
- **DefaultResolution** <“240” | “300” | “600”>
Refers to the printing resolution used for documents, including test patterns and sample documents. 240 dpi is available for Model 180 only; 600 dpi is available for Models 92C, 96, 4635, 180, and 2060 only.
The default setting is “300” for all printers except the 92C and the 2060; their default setting is 600.
On the 96, 4635, 180, 92C NPS/IPS, output resolution is always 600 dpi regardless of the resolution of the input. For these models, if the specified value for the resolution attribute is 300 dpi, the data is decomposed by the controller at 300 dpi, and the print engine interpolates the data to 600 dpi; this provides the fastest processing. When the specified value for the resolution attribute is 600 dpi, the data is decomposed by the controller at 600 dpi; this provides the best quality image. For the 2060, the resolution attribute must be set to 600 dpi.
- **DefaultStacker** <“0” | “n”>
Refers to the stacker group used.
0 = top tray
n = number of the stacker group
The default setting is “1.”
- **DefaultStitch** <“TRUE” | “FALSE”>
Refers to whether test patterns or sample documents are stitched when the Print Test Pattern or Print Sample Document command is entered. The default setting is “FALSE.”
- **DelayDuplexSwitch**
Sets the number of duplex sheets with blank backs that can be printed simplex after a switch within the job from duplex to simplex pages. Default value is 0.

- **DelaySimplexSwitch**

Sets the number of simplex sheets that can be printed duplex with a blank back side after a switch within the job from simplex to duplex pages. After this number of sheets is reached, the printer images only one side of the remaining simplex sheets. Default value is 0.

If a simplex media type is used for the simplex sheets, the delay is ignored and the switch occurs immediately.
- **EarlyStaple <“TRUE” | “FALSE”>**

Refers to whether stapled jobs printed in ascending page order and exceeding the stapler limit (50 sheets) are delivered early. The default setting is “FALSE.” Used only for systems with stitchers.
- **ExportVPsToAppleTalk <“TRUE” | “FALSE”>**

Refers to whether newly created virtual printers are automatically exported to AppleTalk for viewing in the users’ Chooser. If “TRUE”, all new virtual printers will be made available for AppleTalk. If “FALSE”, the new virtual printers are not automatically made available. Selected virtual printers can be exported to AppleTalk by using the Set Virtual Printer Flags command. (Refer to the *Guide to Managing Print Jobs*, “Managing Virtual Printers” chapter.)
- **ExtraMessage <message>**

Refers to any message that appears in the middle of the header page that prints with the job.
- **ForceBlackOnly <“TRUE” | “FALSE”>**

(4850, 4890, and 92C only) Refers to whether black-only printing is used with highlight color printers. The default setting is “FALSE.”
- **ForceHeaderAlt <“TRUE” | “FALSE”>**

Refers to forcing header and trailer sheets to an alternate destination for printers with the bypass transport. The default setting is “FALSE,” meaning that the header and trailer sheets are sent to the bypass transport. When set to “TRUE,” header and trailer pages are sent to the Stacker Group that is not the top tray and not the bypass transport. On 4890, 4850, 92C, and 180 systems, header and trailer pages are sent to stacker group 2. On 4635 and 96 systems, header and trailer pages are sent to stacker group 1.

- ForceReport <“TRUE” | “FALSE”>

Refers to whether a trailer sheet prints at the end of a job. The default setting is “FALSE.”

When the default setting is used, a trailer sheet prints only if there are printing errors or a PostScript file writes to stdout.

- GreenHighlight <RGB value for green>

(4850, 4890, and 92C only) Refers to the RGB value for green highlight color. The default setting is “R: 0.0, G: 0.8820001, B: 0.0.”

For green highlight color to print correctly, the default RGB value for this option should not be modified.

- HeaderMedia <size:type:color:weight>

If the size specified in the HeaderMedia differs from the first media specified for the job, then the sequencer will attempt to match the size of the job’s first media, but match the type, color, and weight of the HeaderMedia option.

If no tray is set that matches the job’s first media size and type, color, and weight of the HeaderMedia, then use the HeaderMedia option without modification.

If the HeaderMedia option matches no tray setting, then use the job’s first media (without modification) for the header media.

- <size>

Indicates the size of the media.

Acceptable standard size values for the models 4850 or 4890 are: “USLetter,” “USLegal,” “A4”. Acceptable custom paper sizes (n x n specified in millimeters) range from 8 by 10 inches / 203 by 254 mm to 8.5 by 14 inches / 216 by 356 mm.

Acceptable standard size values for the models 96, 4635, or 180 are: “USLetter,” “USLegal,” “USLedger,” “Tabloid,” “A3,” “A4.” Acceptable custom paper sizes (n x n specified in millimeters) range from 7 by 10 inches / 178 by 254 mm to 17 by 14 inches / 432 by 356 mm.

Acceptable standard size values for the 2060 are: "USLetter," "USLegal," "USLedger," "Tabloid," "A3," "A4." Acceptable custom paper sizes (n x n specified in millimeters) range up to 7.2 by 19.2 inches / 182 mm by 488 mm. Specific information regarding media supported by the 2060 printer are listed in the *System Overview Guide*.

– <type>

Sets the media type. Use a text string to specify the media type. Enter double quotation marks (" ") to leave the string empty. Valid types for all systems include "transparency," "coated," and "drilled."

Additional valid types for the 96, 4635 and 180 include "precut," "drilled-precut," "#hole," and "ordered#." The symbol # is replaced by a number to indicate either the number of holes or the number of items in the ordered set.

– <color>

Indicates the color of the media. Use a text string to specify the color.

– <weight>

Indicates the weight of the media. It is recommended that you specify the weight in grams per square meter (gsm). "0" indicates no preference.

• HeapLimit <limit in MB>

Refers to the heap limit in MB. The default setting is "100." The default value for this option should not normally be modified.

• Help

Displays all available printing options and the information you need to specify values. This command may scroll off the screen when used in some telnet sessions. This is due to line wrap caused by excessively long lines.

• IPDSChannelAddress <value>

Sets the channel address at which this printer will respond when the interface protocol is set to "channel." (See IPDSInterface option.)

The default setting is "0," and the range of allowable values is 0 .. FFFF (radix: 16). Displays and accepts its value in hexadecimal format.

- IPDSChannelMode <“SingleTag” | “HighSpeed” | “DataStreaming 1.5” | “DataStreaming 3” | “DataStreaming 4.5”>

Sets the running mode of the channel interface. Data streaming values are in Mb per second. The default is “SingleTag.”

SingleTag—Single-tag interlock mode. This is the basic channel transfer mode. It is the slowest method of data transfer. Select this mode when no other transfer mode is available on the host.

HighSpeed—High-speed transfer mode. Although it maintains a single-tag interlock mode, this mode provides a higher speed of data transfer than the single-tag mode.

DataStreaming 1.5—Data streaming at 1.5 Mb per second. This mode is faster than either of the two single-tag interlock modes.

Data Streaming 3—Data streaming at 3 Mb per second.

Data Streaming 4.5—Data streaming at 4.5 Mb per second.

- IPDSContinuousEmulation <“TRUE” | “FALSE”>

When set to “TRUE,” changes the printer origin of the page from portrait to landscape, like continuous feed printers. The default setting is “FALSE.”

- IPDSDefaultResolution <“240” | “300” | “600”>

Sets the resolution at which the IPDS parser requests fonts and accepts IM images. If the virtual printer attribute IPDSResolution is used, then it overrides the IPDSDefaultResolution values. The default setting is “300.”

- IPDSDisableReplicateAndTrim <“TRUE” | “FALSE”>

Changes the sense type model (STM) reply to remove the replicate and trim functionality from the feature list.

A value of FALSE allows replicate and trim, and yields better performance on jobs that use certain types of shading.

A value of TRUE disables replicate and trim, and can cause large uncompressed full-page images to be sent to the printer, which can hurt performance. The benefit is that shading anomalies can sometimes be eliminated by this option.

The default setting is “FALSE.”

- IPDSEndOfSet <“None” | “Markform” | “DGB” | “StackerOffset”>
Sets an IPDS finishing command to trigger the installed finishing device on the printer. The default setting is “None.”
- IPDSGOCAImageResolution <“240” | “300” | “600”>
Sets the target resolution of any GOCA (graphic object content architecture) raster images that do not contain this information. Can be set independently of job resolution. The default setting is “300.”
NOTE: When a GOCA raster is created, the target resolution is determined, but is not embedded in the data structure. Use this option to provide that information. Jobs that include GOCA images with different resolutions will not print correctly.
- IPDSInterface <“tcp” | “channel”>
Sets the interface protocol to be used. The default setting is “tcp.”
- IPDSJobTimeOut <seconds>
Sets the length of time to wait for data before ending a job that has no other logical end. The default setting is “10,” and the range of allowable values is 1 .. 60.
- IPDSLegacyMode <“TRUE” | “FALSE”>
Some older or unsupported IPDS hosts do not support printers with newer IPDS capabilities, and refuse to connect to a printer that reports these features in the initial connection. IBM PSF for AIX is one such host. If you have one of these hosts, set this option to “TRUE.” This removes the offending features from the initial connection and allows the host to connect to the NPS/IPS printer.
The default setting is “FALSE.”
- IPDSPrinterModel <value>
The hexadecimal code for the printer model, sent to the host during the host’s sense-type-and-model (STM) operation.
This number is displayed on error sheets printed by the IPDS printer, and on the host console when a connection is established.
The default setting is “3935,” and the range of allowable values is 0 .. FFFF (radix: 16).

- **IPDSResourceSpace** <number of MB>
Sets the size in megabytes of the resource memory space (IPDSResMem). The default setting is “32,” and the range of allowable values is 16 .. 1024 (maximum depends on disk size).
NOTE: For jobs with large amounts of resources, try setting the value to 128.
- **IPDSStackerSelection** <“UseDefaultGroup” | “AllowHostControl”>
Sets the stacker group used for IPDS printing. “AllowHostSelection” sets the system to use the stacker bins requested in the IPDS data stream. “UseDefaultGroup” sets the system to ignore the bins requested in the IPDS data stream, and to use the default stacker group.
- **IPDSTcpPortNumber** <port number>
Sets the port number at which a host connection is accepted when the interface protocol is set to “tcp.” The default setting is “5001,” and the range of allowable values is 5001 .. 65535.
- **LocalConsoleHeight** <number of lines>
Refers to the number of lines prior to “(More)” that display on the printer controller. The default setting is “45,” and the range of allowable integer values is 20-100.
- **MagentaHighlight** <RGB value for magenta>
(4850, 4890, and 92C only) Refers to the RGB value for magenta highlight color. The default setting is “R: 0.8820001, G: 0.0, B: 0.8820001.”
For magenta highlight color to print correctly, the default RGB value for this option should not be modified.
- **MaxCopies** <number of copies>
Refers to the maximum number of copies of a document that can be printed. The default setting is “1,000.”
- **MaxSecondsPerPage** <seconds per page>
Refers to how long the printer controller is allowed to decompose a page. The time is measured in CPU seconds, and is approximate. This option only applies to PostScript jobs. The default setting is “600.”

- **MinDSC <version number>**
Refers to the minimum acceptable DSC (PostScript Document Structuring Convention) version. The default is 2.1.
- **NoSaveOutput <“TRUE” | “FALSE”>**
Refers to inhibiting paper output for Decomposition Service forms creation. If true, trailer sheets will only be produced in the event of any errors during decomposition. The default setting is “FALSE.”
- **OffsetPerCopy <“TRUE” | “FALSE”>**
Refers to whether the stacker offsets documents per copy when the OffsetPerCopy attribute is not specified. Does not apply when copies are uncollated. The default setting is “FALSE.”
NOTE: Not all printers can offset output. The option is ignored for those printers.
- **OffSetPerJob < “TRUE” | “FALSE”>**
Refers to controlling job offsetting. Selecting “FALSE” disables job offsetting if the OffsetPerCopy option and attribute are also False and if the OffsetPerCopy attribute is not set and the jobs do not request offsetting.
NOTE: Not all printers can offset output. The option is ignored for those printers.
- **OtherHighlight <RGB value for other highlight color>**
(4850, 4890, and 92C only) Refers to the color for the other highlight. The default setting is “R: 0.8820001, G: 0.0, B: 0.0.”
- **PQAShacker <number>**
Refers to the stacker group where PQA pages are delivered (4850, 4890, and 92C only).
- **PrinterLocation <location>**
Refers to the physical location of the printer, for example, a room number.
- **PrinterMoreInfo <infoURL>**
Refers to a user-defined URL that provides information about the printer.
- **PrinterName <printer name>**
Refers to the name of the printer.

- **QuotaPages <number>**

Refers to the maximum number of pages (not including header and trailer) that a document can print before the document is canceled by the system. The default is 10,000,000 pages. This number is an approximation.
- **QuotaSeconds <number>**

Refers to the maximum number of seconds of CPU time that may be used in decomposing a document before the document is cancelled by the system. The default is 86400 seconds. This is an approximation.
- **RedHighlight <RGB value for red>**

(4850, 4890, and 92C only) Refers to the RGB value for red highlight color. The default setting is "R: 0.8820001, G: 0.0, B: 0.0."

For red highlight color to print correctly, the default RGB value for this option should not be modified.
- **RemoteConsoleHeight <number of lines>**

Refers to the number of lines prior to "(More)" that display on the remote console during a telnet session. Lines that have wrapped are not counted. The default setting is "24," and the range of allowable integer values is 20-100.
- **ReportCopies <format for copies>**

Refers to the format in which the number of copies printed per document appears on the trailer sheet that prints at the end of a job. You use numbers and predefined characters to indicate the format. The predefined characters are replaced by the actual numbers on the trailer sheet when the document is printed. The predefined characters are as follows:

 - %g
Indicates that numbers appear as a string.
- **ReportCost <format for cost in dollars>**

Refers to the format in which the estimated cost per document appears on the trailer sheet that prints at the end of a job. You use numbers and predefined characters to indicate the format. The predefined characters are replaced by the actual numbers on the trailer sheet when the document is printed. The predefined characters are as follows:

- %g
Indicates that numbers appear as a string.
- %<number>f
Indicates numbers appear with a floating point. For example, “%3.2f” indicates you want the number to appear as a three digit floating point number with two decimal places, such as 2.10.
- %<number>d
Indicates numbers appear as integers. For example, “%2d” indicates you want the number to appear as a two digit integer, such as 32.
- ReportSheets <format for sheets>
Refers to the format in which the number of pages per document appears on the trailer sheet that prints at the end of a job. You use numbers and predefined characters to indicate the format. The predefined characters are replaced by the actual numbers on the trailer sheet when the document is printed. The predefined characters are as follows:
 - %g
Indicates that numbers appear as a string.
- ReportTime <format for time in seconds>
Refers to the format in which the document decomposition time appears on the trailer sheet that prints at the end of a job. You use numbers and predefined characters to indicate the format. The predefined characters are replaced by the actual numbers on the trailer sheet when the document is printed. The predefined characters are as follows:
 - %g
Indicates that numbers appear as a string.
 - %<number>f
Indicates numbers appear with a floating point. For example, “%3.2f” indicates you want the number to appear as a three-digit floating-point number with two decimal places, such as 2.10.
 - %<number>d
Indicates numbers appear as integers. For example, “%2d” indicates you want the number to appear as a two-digit integer, such as 32.

- **RoyalBlueHighlight** <RGB value for royal blue>
(4850, 4890, and 92C only) Refers to the RGB value for royal blue highlight color. The default setting is “R: 0.074, G: 0.0, B: 0.878”.
For royal blue highlight color to print correctly, the default RGB value for this option should not be modified.
- **RubyHighlight** <RGB value for ruby>
(4850, 4890, and 92C only) Refers to the RGB value for ruby highlight color. The default setting is “R: 0.878, G: 0.0, B: 0.3”.
For ruby highlight color to print correctly, the default RGB value for this option should not be modified.
- **SequencerDebugLog** < “TRUE” | ”FALSE” >
Refers to whether the debug log for the Sequencer is on or off.
- **SiteFontSize**
Refers to the size of font you want to use for text that appears on the header page. The default setting is 18 points.
- **SiteHeader** <message>
Refers to any one line message you want to appear on the upper right corner of the header page. The message may contain approximately 40 to 60 characters using the default SiteFontSize (18 pt text). Anything over that length will be truncated starting at the beginning of the text string. If the default SiteFontSize is changed, the number of characters displayed will change accordingly.
- **TrailerMedia** <size:type:color:weight>
Refers to the media used for printing the trailer page.
If the size that is specified in the TrailerMedia differs from the first media specified for the job, then the sequencer will attempt to match the size of the job first medium, but match the type, color, and weight of the TrailerMedia option.
If no tray is set that matches the job’s first media size and type, color, and weight of the TrailerMedia, then use the TrailerMedia option without modification.
If the TrailerMedia option matches no tray setting, then use the job first medium (without modification) for the trailer medium.

– <size>

Indicates the size of the media.

Acceptable standard size values for the models 4850 or 4890 are: “USLetter,” “USLegal,” “A4”. Acceptable custom paper sizes ($n \times n$ specified in millimeters) range from 8 by 10 inches / 203 by 254 mm to 8.5 by 14 inches / 216 by 356 mm.

Acceptable standard size values for the models 96, 4635, or 180 are: “USLetter,” “USLegal,” “USLedger,” “Tabloid,” “A3,” “A4”. Acceptable custom paper sizes (n by n specified in millimeters) range from 7 by 10 inches / 178 by 254 mm to 17 by 14 inches / 432 by 356 mm.

Acceptable standard size values for the 2060 are: “USLetter,” “USLegal,” “USLedger,” “Tabloid,” “A3,” “A4.” Acceptable custom paper sizes ($n \times n$ specified in millimeters) range up to 7.2 by 19.2 inches / 182 mm by 488 mm. Specific information regarding media supported by the 2060 printer are listed in the *System Overview Guide*.

– <type>

Sets the media type. Use a text string to specify the media type. Enter double quotation marks (“”) to leave the string empty. Valid types for all systems include “transparency,” “coated,” and “drilled.”

Additional valid types for the 96, 4635 and 180 include “precut,” “drilled-precut,” “#hole,” and “ordered#.”

– <color>

Indicates the color of the media. Use a text string to specify the color.

– <weight>

Indicates the weight of the media. It is recommended that you specify the weight in grams per square meter (gsm), though there is no restriction on the type of unit. “0” indicates no preference.

• UserFontSize

Refers to the font size you want to use for the user name that appears on the header page. The default setting is 18 points, and the range of allowable integer values is 10-60.

- **UseTitlePage** <“TRUE” | “FALSE”>
Refers to whether a header page prints with each job. The default setting is “TRUE.”
- **VioletHighlight** <RGB value for violet>
(4850, 4890, and 92C only) Refers to the RGB value for violet highlight color. The default setting is “R: 0.302, G: 0.0, B: 0.8”.
For violet highlight color to print correctly, the default RGB value for this option should not be modified.
- **VIPPCacheEnabled** <“TRUE”|“FALSE”>
Set to “TRUE” to turn on VIPP caching and “FALSE” to turn off VIPP caching.
Caching can improve VIPP performance on some types of jobs. It is essential to test the application to determine if caching should be used.
- **YellowHighlight** <RGB value for yellow>
(4850, 4890, and 92C only) Refers to the RGB value for yellow highlight color. The default setting is “R: 0.8820001, G: 0.8820001, B: 0.0”.
For yellow highlight color to map correctly, the default RGB value for this option should not be modified.

Example The following example sets the name of the printer to “PS1:”

```
PS-admin>set option printername ps1
```

The following example sets the font size of text on the header page to 14 points:

```
PS-admin>set option sitefontsize 14
```

List Options command

Use the **List Options** command to show the current settings for default printing options.

Access level Administrator

Syntax List Options

Arguments IPDS*

Lists only the options for IPDS printing.

*

Lists all options.

Print Options command

Use the **Print Options** command to print the default printing options.

Access level Administrator

Syntax Print Options <copies> <plex>

Arguments The following arguments are available:

- <copies>
indicates the number of copies you want to print
- <plex>
indicates whether you want to print the copies in simplex, duplex, or tumble duplex.

Example The following example prints five copies of the default print options in simplex mode:

```
PS-admin>print options 5 simplex
Print Options at January 7, 1999
3:31:54 pm PDT submitted as document number 598
```

Setting imager parameters

Imager Parameter commands adjust the imaging level of PostScript, IPDS, and ASCII print jobs only. They control the rendering of lines, fonts, tints, and fine features.

- The **Show Imager Parameters** command displays the current values of the imager parameters.
- The **Change Imager Parameters** command changes the current values of the imager parameters for PostScript, IPDS, and ASCII only.
- The **Restore Default Imager Parameters** command resets the imager parameters to the default values.

You must enter the **Restart Sequencer** command after you change or restore default imager parameters for the values to take effect.

NOTE: The imager parameters do not affect the quality of bitmap graphics and bitmap fonts.

Show Imager Parameters command

Use the **Show Imager Parameters** command to display the values of the imager parameters.

Access level Administrator

Syntax Show Imager Parameters

Arguments None

Example This example shows the results of the **Show Imager Parameters** command:

```
PS-admin> show imager parameters  
  
LineThicken: 0.3  
FontThicken: 0.0  
Tint: 1.0  
SampledBlackSnap: 0.0001  
FatScanConversion: FALSE
```

Change Imager Parameters command

Use the **Change Imager Parameters** command to change the values of the imager parameters for PostScript, IPDS, and ASCII only.

Access level Administrator

Syntax Change Imager Parameters

Arguments None.

The system prompts you for the value of each parameter as follows:

- LineThicken

Indicates the amount in pixels of thickening you want applied to the lines in a print job. The value for this parameter must be between 0.0 and 100.0.

Recommended values for darkening levels are as follows:

- Slight darkening 1.0
- Medium darkening 2.0
- Heavy darkening 3.5

NOTE: Specifying the 3.5 value for heavy darkening has approximately the same effect as using the `thicken` document attribute.

- **FontThicken**

Indicates the amount in pixels of thickening you want applied to the strokes within a font for PostScript, IPDS, and ASCII only. The value for this parameter must be between 0.0 and 100.0.

If you change the `FontThicken` parameter, examine the output carefully to ensure that the thickening level, as well as the overall image quality, is acceptable. Depending on the font and printer you are using, changing the `FontThicken` parameter may cause some characters to appear distorted.

Recommended values for darkening levels are as follows:

- Slight darkening 2.0
- Medium darkening 5.0
- Heavy darkening 7.0

NOTE: Specifying the 7.0 value for heavy darkening has approximately the same effect as using the `Thicken` document attribute.

- **Tint**

Indicates a value between 0.5 and 1.0, where the smaller the number, the darker the tints become. This parameter only affects the imaging of PostScript, IPDS, and ASCII jobs.

Recommended values for darkening levels are as follows:

- Slight darkening 0.9
- Medium darkening 0.75
- Heavy darkening 0.5

- **SampledBlackSnap**

Indicates a fractional value by which the printer adjusts the scale factor of sampled blacks in Interpress jobs. The value for this parameter must be between 0 and 1. You may need to adjust this value for printing Interpress masters created for earlier versions of Interpress that do not rescale sampled blacks. This parameter only affects the imaging of Interpress jobs.

Using a small fraction for this value is recommended. For example, 0.06 allows the scale factor to be adjusted upward or downward by approximately 6%.

- **FatScanConversion**

Indicates whether or not PostScript, IPDS, and ASCII fine features will be enhanced. The default selection is FALSE.

Example This example shows the results of the **Change Imager Parameters** command:

```
PS-admin> change imager parameters
Enter the line thickening value: 1.0
Enter the font thickening value: 2.0
Enter the tint value: 0.9
Enter snap value for sampled blacks: 0.06
Use Fat Scan Conversion: Yes
```

Restore Default Imager Parameters command

Use the **Restore Default Imager Parameters** command to restore the default values of the imager parameters.

Access level Administrator

Syntax Restore Default Imager Parameters

Arguments None

Example The following example restores the default values of the imager parameters:

```
PS-admin>restore default imager parameters
Do you want to restore default parameters? yes
```

NOTE: Default values are printer specific.

Setting PCL imager parameters

PCL Imager Parameter commands adjust the imaging level of PCL print jobs only. They control the rendering of lines, fonts, tints, and fine features.

- The **Show PCL Imager Parameters** command displays the current values of the imager parameters.
- The **Change PCL Imager Parameters** command changes the current values of the imager parameters for PCL only.
- The **Restore Default PCL Imager Parameters** command resets the imager parameters to the default values.

*NOTE: You must enter the **Restart Sequencer** command after you change or restore default PCL imager parameters for the values to take effect.*

Show PCL Imager Parameters

Use the **Show PCL Imager Parameters** command to display the values of the PCL imager parameters.

Access level Administrator

Syntax Show PCL Imager Parameters

Arguments None

Example The following example shows the results of the **Show PCL Imager Parameters** command:

```
PS-admin> show pcl imager parameters
PCL 5e
Enhance Graphics: FALSE
Enhance Built-in Pattern: FALSE
Enhance Strokes: 0
Enhance User-defined pattern: 0
Enhance Bitmap Font: FALSE
```

Change PCL Imager Parameters command

Use the **Change PCL Imager Parameters** command to change the values of the imager parameters for PCL only.

Access level Administrator

Syntax Change PCL Imager Parameters

Arguments None.

The system prompts you for the value of each parameter as follows:

- Resolution
For the 96, 4635, 180 printer models only, enter the dpi value 300 or 600 at the prompt.
- Raster Graphics enhancement value
Indicates whether you want thickening for raster graphics. Acceptable values are “TRUE” or “FALSE”.
- Built-in pattern enhancement value
Indicates whether you want thickening for patterns. Acceptable values are “TRUE” or “FALSE”.
- HPGL minimum stroke enhancement value
Indicates whether you want to thicken the minimum stroke for HPGL. The value must be a positive integer (from 0 to 255). “0” and “1” indicate that no enhancement is required. Other integers indicate the desired width of the stroke in pixels.
- HPGL user-defined pattern enhancement value
Indicates whether you want thickening for HPGL user-defined patterns. The values are:
“0”=no enhancement
“1”=1D overstrike (shift & OR on X axis)
“2”=2D overstrike (shift & OR on both X and Y axes)
“3”=2X scaling (double pixeling)
- Bitmap font enhancement value
Indicates whether or not you want thickening for bitmap fonts. Acceptable values are “TRUE” or “FALSE”.

On the 92C, 4850, and 4890 models, the system prompts you to change parameters for both PCL 5e and PCL 5c.

On the 4050, 4090, 96, 4635, 180, and 2060 models, the system prompts you to enter the resolutions for which you want to change the parameters. When finished with that resolution, the system asks if you want to change another set of PCL 5e parameters.

Restore Default PCL Imager Parameters command

Use the **Restore Default PCL Imager Parameters** command to restore the default values of the imager parameters.

Access level Administrator

Syntax Restore Default PCL Imager Parameters

Arguments None

Example This example restores the default values of the PCL imager parameters:

```
PS-admin>restore pcl default imager parameters
Do you want to restore default PCL parameters? yes
```

Default values vary based on model, resolution, and version of PCL.

Table 1. **Default PCL imager parameters**

	4050/4090 (300 dpi)	4850, 4890, and 92C (300 dpi)		92C (600 dpi)		96/4635/180 (300 dpi)	96/4635/ 180/2060 (600 dpi)
	PCL 5e	PCL 5c	PCL 5e	PCL 5c	PCL 5e	PCL 5e	PCL 5e
Enhance Graphics	True	False	False	False	False	False	True
Built-in Pattern	True	False	False	False	False	True	True
Enhance Strokes	2	0	0	0	0	1	2
User-defined pattern	1	2	0	2	0	1	1
Bitmap Font	True	False	False	False	False	False	True

Setting PCL parameters

The **Change PCL Parameters** command allows you to define the environment for PCL 5 printing.

The **Restore Default PCL Parameters** command allows you to reset the parameters to the defaults.

The **Show PCL Parameters** command allows you to view the current settings.

Change PCL Parameters command

Use the **Change PCL Parameters** command to define the settings you require for PCL 5 printing. Do this before you begin printing your PCL jobs. You can define parameters for:

- Saving the environment—whether you want permanent macros and fonts that you download to be saved to disk for use with PCL jobs
- Specifying edge-to-edge printing—whether you want your PCL jobs to use edge-to-edge printing
- Automatically adding a carriage return (CR) or line feed (LF) to all line endings.
- Specifying a symbol set

*NOTE: You must enter the **Restart Sequencer** command after using the **Change PCL Parameters** command.*

Access level Administrator

Syntax Change PCL Parameters <AutoCR value> <AutoLF value>
<Edge to edge value> <Environment save value> <Language>
<Symbol set value>

Arguments The following arguments are available:

- <AutoCR value>

Acceptable values are TRUE or FALSE. If TRUE, the system will automatically add a Carriage Return to all line endings. Generally, it should be set to TRUE when printing from UNIX systems. It can also be used if lines are printing in a stair-step pattern. If printing primarily from PCs with DOS or Windows, it should be set to FALSE. The default is FALSE.

- <AutoLF value>

Acceptable values are TRUE or FALSE. If TRUE, the system will automatically add an ASCII line feed (or new line) to all line endings. Generally, it should be set to TRUE when printing from Macintosh systems. It can also be used if lines are printing on top of each other. If printing primarily from PCs with DOS or Windows, it should be set to FALSE. The default is FALSE.

- <Edge to edge values>

Acceptable values are TRUE or FALSE. An entry of TRUE will set the system to use edge to edge printing for PCL jobs. An entry of FALSE means that edge to edge printing will not be used. The value FALSE emulates the HP LaserJet 4, which has default margins on all four edges. The default is FALSE.

NOTE: The 2060 printer cannot print edge to edge.

- <Environment save value>

Acceptable values are TRUE or FALSE. An entry of TRUE will set the system to save downloaded permanent PCL fonts and macros to disk. An entry of FALSE means that downloaded permanent PCL fonts and macros will not be saved to disk. They will be used with the job in which they are downloaded, and will persist until there is a system or sequencer restart. The default is FALSE.

NOTE: There are several important things to be aware of when saving permanent PCL fonts and macros to disk:

- *The fonts and macros saved to disk will be retained even after a system or sequencer restart. This is not like an HP LaserJet where the resources would be lost after a restart because they are stored in memory, not on the disk.*
- *If a font or macro with the same ID as one saved to disk is downloaded (and the EnvironmentSave value is TRUE), it will overwrite the one already on disk. In a network environment, it is important for users who download fonts and macros to be aware of this so that they do not inadvertently overwrite each others' resources.*
- *When using the commands to list or print fonts, fonts that have been downloaded will not be listed. Only those that have been installed at the printer controller will be listed.*

- <Language>
Specify the language value you wish to use. Valid language values are: ENGLISH, FRENCH, ITALIAN, GERMAN, SPANISH, PORTUGUESE, NORWEGIAN, DUTCH, FINNISH, DANISH, and SWEDISH.
- <Symbol set value>
Specify a default value from the supported symbols sets. This is the default symbol set that will be used if one is not included with the job. The default is 8U (symbol set ID for Roman-8). You can use either kind1 or symbol set ID numbers when specifying the value. Refer to the section on “PCL symbol sets.”

Example This example shows the usage of the **Change PCL Parameters** command:

```
PS-admin> change pcl parameters
Enter the auto CR value (TRUE, FALSE): TRUE
Enter the auto LF value (TRUE, FALSE): TRUE
Enter the edge to edge value (TRUE,FALSE): TRUE
Enter the environment save value (TRUE,FALSE): FALSE
Enter the language value: ENGLISH
Enter value for symbol set: 8U
Sequencer needs to be restarted:use “Restart Sequencer” command.
```

You can also enter the command on one line, as shown below.

Example This example sets the values to the same ones shown above:

```
PS-admin>change pcl parameters true true true false english 8u
```

PCL symbol sets In most cases, a PCL job will specify a symbol set. For jobs that do not include a symbol set, you can specify a default. The list of valid symbol sets follows. For more detailed information regarding the use of PCL symbol sets, see the HP PCL documentation.

Table 5-1. **PCL 5e symbol sets**

Kind 1	Symbol set ID	Symbol set name
4	0D	ISO 60: Danish/Norwegian
9	0I	ISO 15: Italian
14	0N	ISO 8859/1 Latin 1
19	0S	ISO 11: Swedish
21	0U	ISO 6: ASCII

Table 5-1. PCL 5e symbol sets

Kind 1	Symbol set ID	Symbol set name
37	1E	ISO 4: UK
38	1F	ISO 69: French
39	1G	ISO 21: German
53	1U	Legal
78	2N	ISO 8859/2 Latin 2
83	2S	ISO 17: Spanish
173	5M	PS Math
174	5N	ISO 8859/9 Latin 5
180	5T	Windows 3.1 Latin 5
202	6J	Microsoft Publishing
205	6M	Ventura Math
234	7J	DeskTop
269	8M	Math-8
277	8U	Roman-8
293	9E	Windows 3.1 Latin 2
308	9T	PC-8 Turkish
309	9U	Windows 3.0 Latin 1
330	10J	PS Text
341	10U	PC-8
373	11U	PC-8 Danish/Norwegian
394	12J	MC Text
405	12U	PC-850 Multilingual
426	13J	Ventura International
458	14J	Ventura US
501	15U	Pi Font
565	17U	PC-852, Latin 2
621	19M	Symbol
629	19U	Windows 3.1 Latin 1
18540	579L	Wingdings

Restore Default PCL Parameters command

Use the **Restore Default PCL Parameters** command to restore the PCL settings to the defaults. If the PCL5 defaults file has been modified on your system, the defaults may be different from those listed.

*NOTE: You must enter the **Restart Sequencer** command after using the **Restore Default PCL Parameters** command.*

Access level Administrator

Syntax Restore PCL Parameters

- AutoCR: FALSE
- AutoLF: FALSE
- EdgeToEdge: FALSE
- EnvironmentSave: FALSE
- Language: ENGLISH
- SymbolSet: 8U

Show PCL Parameters command

Use the **Show PCL Parameters command** to display the current PCL settings.

Access level Administrator

Syntax Show PCL Parameters

- AutoCR: TRUEIFALSE
- AutoLF: TRUEIFALSE
- EdgeToEdge: TRUEIFALSE
- EnvironmentSave: TRUEIFALSE
- Language: <LANGUAGE>
- SymbolSet: <value>

*NOTE: Even though you can enter a symbol set value using either kind1 or symbol set ID numbers, when you use **Show PCL Parameters**, only the symbol set ID number is displayed.*

Example

This example shows the usage of the **Show PCL Parameters** command:

```
PS-admin> show pcl parameters
AutoCR: FALSE
AutoLF: FALSE
EdgeToEdge: TRUE
EnvironmentSave: FALSE
Language: ENGLISH
SymbolSet: 8U
```

6. Input and output profiles

The Profile commands show, create, and set input and output profiles. You use these commands only if your printer is configured with an optional third party input or output device. (Optional input devices are available only for 96, 4635, and 180 NPS/IPS printers.)

- The **Show Profiles** command lists the profiles that have been set for your optional input and output devices.
- The **Create Profile** command creates a profile for your optional input or output device.
- The **Set Profile** command sets a profile you've created for your optional input or output device.

NOTE: You must create a profile before you can set it.

- The **Delete Profile** command deletes a profile for your optional input or output device.

Profile commands

This section provides the syntax and arguments for the profile commands.

Show Profiles command

Use the **Show Profiles** command to show profiles for optional input and output devices.

Access level Administrator

Syntax Show <"Input" | "Output"> Profiles

Arguments <"Input" | "Output">

Specifies that the profile is for an input or output device.

NOTE: If you have set a profile, but “noname” is displayed as the current profile, use the Set Profile command to restore the desired profile.

Create Profile command

Use the **Create Profile** command to create a profile for an optional input or output device.

Access level Administrator

Syntax Create <“Input” | “Output”> Profile <name> <P1>...<P13>

Arguments <“Input” | “Output”>

Specifies whether the profile is for an input or output device.

<name>

Refers to the name (usually 6–8 characters) you apply to the device

<P1> ... <P13>

Refers to values for the profiles obtained from your Xerox representative or third-party vendor. These values are set in the printer and saved in a file. The system prompts you for 13 values for the output profile.

Set Profile command

Use the **Set Profile** command to set a profile that you have created for an optional input or output device.

Access level Administrator

Syntax Set < “Input” | “Output”> Profile <name>

Arguments The following arguments are available:

- <“Input” | “Output”>

Specifies whether the profile is for an input or output device

- <name>

Refers to the name you applied to the device when you created a profile for it.

Delete Input/Output Profile command

Use the **Delete Input/Output Profile** command to delete a profile that you have created for an optional input or output device.

Access level Administrator

Syntax Delete < “Input” | “Output”> Profile <name>

Arguments The following arguments are available:

- <“Input” | “Output”>
Specifies whether the profile is for an input or output device
- <name>
Refers to the name you applied to the device when you created a profile for it.

Profile parameters

Personality profile parameters for your output devices are set during the initial installation of your DocuPrint NPS/IPS, but you can create profiles for optional input and output devices as required using **Set Profile** parameters.

You can create, then set profile parameters for optional input and output devices as required, by using the following `setoutputdevice` parameters. You can also set output device parameters for optional output devices. Typically, all values are zero except those for p7, p10, p11, and p12.

The following parameters can be set for device profiles and for output devices:

- <name>
The name (usually 6–8 characters) you assign to the device Profile.
- <p1>

Specifies the minimum time that the printer waits between sheets when delivering them out of the bypass transport. Acceptable values range from 0 to 65535 ms.

- <p2>
Specifies the acceptable time interval between the SHEET EXIT signal and SHEET DELIVERED signal. Acceptable values range from 0 to 12999 ms. (See also <p7>.)
- <p3a>
Specifies the time between sending last page of one set and first page of next set. Acceptable values range from 0 to 65535 ms.
- <p3b>
Specifies the minimum time between two consecutive ends of sets.
- <p4>
Specifies the maximum time between the printer sending an END OF SET signal and the output device responding with a SET DELIVERED signal. Acceptable values range from 0 to 12999 ms.
- <p5>
Specifies the time between the printer sending a CYCLE UP signal and the output device being ready to accept sheets. Acceptable values range from 0 to 65535 ms.
- <p6>
Specifies the mode of operation for the DFA device:
 - **0**=automatic
 - **1**=Finishing Function 1 ALWAYS
 - **2**=Finishing Function 1 NEVER
 - **4**=Finishing Function 2 ALWAYS
 - **8**=Finishing Function 2 NEVER
 - **4096**=always recover to sheet boundaries for failures involving the DFA device
 - **8192**=always recover to set boundaries for failures involving the DFA device
 - **16384**=auto restart after DFA full (not currently implemented)
 - **32768**=1-N (face-down) output.

If you use a DFA connected finishing device on a 96, 4635, or 180 NPS/IPS and you wish to specify 1-N output, add 32768 to the P6 value, and enter the sum of the two numbers.

NOTE: To set more than one function for <p6>, add the appropriate numbers together.

- <p7>
Specifies the status signals supported in the form of a sum of binary values (in parentheses below) specifying which status signals from the output device are used by the printer; for example, 5 specifies that the printer should use the ONLINE and FULL signals (1+4) and ignore the rest.
 - ONLINE (1): output device is connected and available
 - FAULTED (2): output device has an error and printer must stop delivering sheets to output device immediately (hard stop)
 - FULL (4): printer must stop delivering sheets to output device as soon as possible (soft stop)
 - SHEET DELIVERED (8): output device has accepted the printed sheet
 - SET DELIVERED (16): output device has accepted the entire set
- <p8>
Specifies the sheet exit signal type:
 - 0=signal starts on leading edge of sheet
 - 1=signal starts on trailing edge of set
- <p9> sheet exit start adjust
Sets the time that the printer waits to send SHEET EXIT and END OF SET signals to the output device. Acceptable values range from -100 to +300 ms.
- <p10>
Sets the pulse width of the SHEET EXIT signal. Acceptable values range from 30 to 110 ms.
- <p11>
Specifies the end of set offset time. Acceptable values range from 0 to 255 ms, with a usual value of 10 ms.

- <p12>

Specifies dead-cycle time before printer shutdown. Allows time for an operator to unload the finisher without printer shutdown. Acceptable values range from 5 to 60 seconds.

NOTE: This parameter applies only to 4050, 4090, 4850, 4890, and 92C printers with bypass transports attached and configured.

7. Setting the printer controller date and time

The **Show Time** command displays the date and time, and the offset from Greenwich Mean Time. The **Set Time** command sets the date and time on the printer controller.

CAUTION

This is the only method that you should use to change the date. Do not use UNIX date commands.

Show Time command

Use the **Show Time** command to display the date and time, and the offset from Greenwich Mean Time.

Access level Administrator, Operator, or User

Syntax Show Time

Arguments None

Set Time command

Use the **Set Time** command to set the date and time on the printer controller. You can set dates up to (but not including) January 18, 2036, 09:14:05 PST.

CAUTION

Setting the time and date causes the system to reboot.

Access level Administrator or Operator

Syntax Set Time <Time | Remote Host Name | IPAddress>

- Arguments**
- <Time>
Date and time entered from the keyboard using the format **mm/dd/yyyy hh:mm:ss**
where:
 - **mm** = month, entered in digits from 1 to 12
 - **dd** = day, entered in digits from 1 to 31
 - **yyyy** = any year in the 20th century or later
 - **hh** = hour of the day
 - **mm** = minutes within the current hour
 - **ss** = seconds within the current minute (optional)
 - <Remote Host Name>
A remote host from which the time is acquired
 - <IPAddress>
An Internet Protocol (IP) address of a remote host from which the time is acquired

Example The following example sets the time to 10:31:25 on June 26, 1999:

```
PS-op>Set Time 06/26/1999 10:31:25  
  
Upon confirmation, local time will be set to June 26, 1999 10:31:25  
am PDT.  
  
Do you really want to set the time? Y
```

8. Checking system status and displaying billing meters

This chapter describes commands that let you monitor various aspects of printer status, including billing meters.

- The **List Volumes** command lists the amount of disk space available for each partition of the disk.
- The **Show Status** command shows the status of the printer. The amount of detail shown depends on the access level from which you issue the command.
- The **Show IPDS Status** command shows information specific to IPDS printing.
- The **Print Sample Documents** command allows you to print a sample document to determine system function and view output quality. The **List Sample Documents** command lists available sample documents.
- The **List Executives** command lets you determine which clients are connected to your DocuPrint NPS/IPS as remote operators. This command also lists current local sessions.
- The **Display Billing Meters** command displays the available billing meters.
- The **Print Billing Report** command prints billing meter data.

The sections in this chapter provide the syntax and arguments for these commands.

List Volumes command

Use the **List Volumes** command to list the amount of disk space available for each partition of the disk.

NOTE: When the hard disk partition that is used for spooling is full, it no longer accepts jobs from clients. Use this command to check the partitions frequently; when it approaches 80 percent, delete jobs, release held jobs, or dump accounting logs.

Access level Administrator or Operator

Syntax List Volumes

Arguments None

Example This example shows the information provided with the **List Volumes** command:

```
PS-op>list volumes
```

```
Filesystemkbytesused availcapacityMounted on  
/dev/dsk/c0t0d0s0 16231 12621 1990 87% /  
/dev/dsk/c0t0d0s6 135415108626 3249 90% /usr  
/dev/dsk/c0t0d0s73547492469542 2723210 15% /var  
/dev/dsk/c0t0d0s5 114847 80328 23039 78% /opt
```

Show Status command

Use the **Show Status** command to show the status of the printer.

*NOTE: If multiple problems occur at the printer, the **Show Status** command shows only the most recent system problem. You may need to check other parts of the system after correcting the problem that was displayed.*

The User privilege mode shows less status information than the Operator mode.

Access level Administrator, Operator, or User

Syntax Show Status

Arguments None

Example The following example shows the information provided by the **Show Status** command. There are differences in the information that is provided, based on the printer model and configuration.

Table 8-1. **Show Status** example for 4850

```
PS-op>Show Status
Printer Type: Xerox/4850, Duplex & Highlight Color capable
Media Loaded:
  A4::white: Tray 4
  UsLetter::blue: Tray 3
  USLegal::white: Tray 2
  USLetter::white: Tray 1
Paper Trays:
  1: OK (can feed: standard, transparencies, drilled; can purge)Purge Allowed
  2: OK (can feed: standard, transparencies, drilled; can purge)
  3: OK (can feed: standard, transparencies, drilled; can purge)
  4: OK (can feed: standard, transparencies, drilled; can purge)
Stackers:
  Top: OK, No Offset (can stack: standard, transparencies, drilled)
  1: OK, Offset (can stack: standard, drilled)
  2: OK, Offset (can stack: standard, drilled)
Stacker Groups:
  0: Top Tray
  1: Stacker 1
  2: Stacker 2
Message:
  L035 - IOT in power saver mode.
Housings:
  State: OK, Color:Black
  State: OK, Color:Green
Spooler status: Available
Formatter status: Available
Printer status: Available
Printing is Started.
Queuing is Started.
SchedulingPolicy:resourceMatch
```

Table 8-2. **Show Status example for 2060**

```
PS-op>Show Status
Printer Type: Xerox/DC2060, Duplex & Full Color capable Media Loaded:
  UsLetter::white: Tray 3
  UsLedger::white: Tray 2
  Not Set: Tray 1
Paper Trays:
  1: Not Set (can feed: standard)
  2: OK (can feed: standard)
  3: OK (can feed: standard, transparencies)
Stackers:
  Top: OK, No Offset (can stack: standard, transparencies, drilled)
  1: OK, Offset (can stack: standard, transparencies, drilled)
Stacker Groups:
  0: Top Tray
  1: Stacker 1
No Printer Messages.
Housings:
  State: OK, Color: Black
  State: OK, Color: Cyan
  State: OK, Color: Magenta
  State: OK, Color: Yellow
Spooler status: Available
Formatter status: Available
Printer status: Available
Printing is Started.
Queueing is Started.
Scheduling Policy: resourceMatch
```

Show IPDS Status command

Use the **Show IPDS Status command** to show status information specific to IPDS printing.

Access Administrator, Operator, or User

Syntax Show IPDS Status

Arguments None

Example The following example shows the information provided by the **Show IPDS Status** command.

```
PS-op>Show IPDS Status
IPDS Tracing is <started | stopped>
The IPDS Virtual Printer is <vp_name>
<VP attribute list>
IPDS Printing is <started | stopped>
The channel is <online | offline>
The IPDS state is <ready | not ready>
The pages outstanding is <n>
```

Listing and printing sample documents

To test the print quality of your printer, you can print sample documents. The **List Sample Documents** command shows what sample documents are available.

There are some special sample documents that are useful to the operator. The **DocuPrintFAQ** provides a list of frequently asked questions about DocuPrint NPS/IPS. This document contains information that may help you resolve some problems. The **OperatorQRC** is a quick reference card with a summary of the steps for performing the most common operator procedures.

List Sample Documents command

Use the **List Sample Documents** command to list the available sample documents.

Access level	Administrator or operator
Syntax	List sample documents
Arguments	None

NOTE: The Sample button on the printer control panel is not supported.

Example The following is a listing of sample documents. Note that the available sample documents vary based on the type of printer you have.

```
PS-op>List Sample Documents
Available Sample Documents are:
100 pages
2pages
4pages
50pagesDocuPrintFAQ
dpps
FontDir
HC
iso8859-1
JargonGen
maze
mesh50
mesh100
OperatorQuickReferenceCard
pclfont
Shapes
StdPCLFonts
StdPSFonts
testgray
testxerox
worm
XeroxSpiral
XGFGoldenJob
XGFLicenseRequestForm
XRXPJ1
XRXPJ2
```

Print Sample Document command

Use the **Print Sample Document** command to print the sample document you select from the list. If you do not enter arguments with the command, the system prompts you for them.

Access level	Administrator or operator
Syntax	Print Sample Document <Document><Copies><Plex><Staple> <Resolution><Media><Stacker group>
Arguments	<p><Document> Indicates the name of the sample document you want to print. The name is case-sensitive.</p> <p><Copies> Indicates the number of copies of the sample document you want to print.</p> <p><Plex> Indicates whether the sample document prints on one side or on both sides of each page. You can specify “simplex,” “duplex,” or “tumble” duplex.</p> <p><Staple> You must specify “DontStaple” even though the staple feature is not available</p> <p><Resolution> Indicates the printing resolution— “300” or “600” dpi.</p> <p><Media> Specifies the media you want to use for printing the sample document. The syntax is <size:type:color:weight>. For size, you can specify standard names such as “USLetter,” “USLegal,” “A4,” or you can specify dimensions “n×n.” Use a text string to indicate the media type and color. You can specify the weight in any unit, though grams per square meter (gsm) is recommended.</p> <p><Stacker group> Specifies the stacker to which you want the sample document sent—0, 1, or 2.</p>

NOTE: Whenever you specify stacker “2” but the bypass transport feature is not available, the sample document is sent to the top tray.

NOTE: When Print Sample Document is invoked to send a job to the top Tray and stitching finish is specified, the stitching is ignored.

List Executives command

Use the **List Executives** command at the printer controller or at the client when logged on as a remote operator, to determine which clients are connected to your DocuPrint NPS/IPS as remote operators and to list current local sessions. (Refer to “Using remote access” in the “Using the system interface” chapter for more information.)

Access level Administrator or Operator

Syntax List Executives

Arguments None

NOTE: An asterisk indicates the client from which you issued the command. IP addresses for all clients logged on as remote operators are listed. If DNS is enabled on the network, host names are also listed.

Display Billing Meters command

Use the **Display Billing Meters** command to display the available billing meters. As the printer processes print jobs, it maintains usage data to be displayed on the billing meters. Billing meters are numbers (up to 8 digits) used to track printer activity, such as the number of pages printed.

NOTE: This command is not used for the DocuColor 2060 NPS/IPS. On the DocuColor 2060, use the touchscreen to display billing meters.

Access level Administrator or operator

Syntax Display Billing Meters <All>

NOTE: There are different arguments for this command depending on the printer model you have.

**Arguments for 96,
4635, and 180
NPS/IPS billing
meters**

The following arguments are available when you are using this command with a 96, 4635, or 180 NPS/IPS:

- <All>
Displays all the billing meters.
- <none>
If no argument is entered, only billing meter A is displayed.
- Billing Meter A
The total number of good prints delivered.
- Billing Meter C
The total number of good 3-pitch prints delivered, divided by 100.
- Billing Meter E
The total number of good 4-pitch prints delivered, divided by 100.
- Billing Meter F
The total number of purge sheets delivered, divided by 100.
- Billing Meter H
The total number of good duplex sheets delivered, divided by 100.
- Billing Meter J
The total number of good service prints delivered, divided by 100.
- Billing Meter K
The total number of good prints delivered, divided by 100.
- Billing Meter S1
The total number of good 5-pitch prints delivered, divided by 100.
- Billing Meter S2
The total number of good 6-pitch prints delivered, divided by 100.
- Billing Meter S3
The total number of good 7-pitch prints delivered, divided by 100.

**Arguments for
4050/4090, 4850/
4890, and 92C
NPS/IPS billing
meters**

The following arguments are available when you are using this command with billing meters on the 4050/4090, 4850/4890, and 92C NPS/IPS.

- <All>
Displays all the billing meters.
- <none>
If no argument is entered, only billing meter A is displayed.
- Billing Meter A
Counts the number of successfully completed sheets through the paper path. Duplex sheets count as two sheets.
- Billing Meter C
Counts all the sheets fed into the paper path from Tray 1,2,3, or 4.
- Billing Meter E
Counts all the successfully completed sheets delivered to the intended output destination.
- Billing Meter F
Same function as Billing Meter A except that it can be cleared by the system.
- Billing Meter H
Counts all the successfully completed duplex sheets delivered to the intended output destination.
- Billing Meter J
Same function as Billing Meter A except that it counts sheets printed while the printer is in diagnostic mode.
- Billing Meter L
Counts the total number of successfully completed color sheets printed in highlight color. Sheets using black only are recorded by this meter. (Used only for highlight color printers.)
- Billing Meter T
Same function as Billing Meter A.

Print Billing Report command

Use the **Print Billing Report** command to print billing meter data. You can report meter readings on a monthly or quarterly basis, or you can estimate monthly or quarterly usage and reconcile your estimates with meter readings taken by your service representative during regular maintenance or service calls. If you report readings, you must review the billing-meter data during the last five days of each month (when the system is idle) and transmit the data to Xerox.

NOTE: This command is not used for the DocuColor 2060 NPS/IPS.

Access level Administrator or operator

Syntax Print Billing Report

Arguments None. However, if the service representative did not enter the System ID and Customer ID during installation, the system prompts you to enter the information before you can print the billing report.

System ID has not been set. Enter system ID to use for the report:

<printer serial number>

Customer ID has not been set. Enter customer ID to use for the report:

<customer ID>

Ask your service representative to enter the System ID and Customer ID.

Examples The examples show sample billing reports:

```
Xerox DocuPrint 4850
Customer Billing Report

Date: 01/07/97
Time: 19:50
CUSTOMER ID: dptest
MACHINE ID: 11W030919

***Base System Configuration
Machine type - 4850

Printer Characteristics

- Speed: 50 ppm
- Paper path: duplex
- Resolution: 300 spi
- Finisher: 2-tray Normal
- Default Order:1 to N
- Feeders:

- Feeder 1: UsLetter::white
- Feeder 2: UsLetter::white
- Feeder 3: UsLetter::white
- Feeder 4: UsLetter::white

- Dry Ink Housings: 2

GOOD IMPRESSIONS SUCCESSFULLY DELIVERED: 120182
BLK XEROGRAPHIC MODE IMPRESSIONS: 19215
H/L XEROGRAPHIC MODE IMPRESSIONS: 100967
SHEETS PRINTED IN IOT DIAGNOSTIC MODE: 29306
GOOD IMPRESSIONS SUCCESSFULLY DELIVERED IN NORMAL/
DIAGNOSTIC MODES: 120182
```


**Xerox DocuPrint 4635
Customer Billing Report**

Date: 01/07/97

Time: 18:54

CUSTOMER ID: dptest

MACHINE ID: 6D5002013

*****Base System Configuration**

Machine type - 4635

Printer Characteristics

- Speed: 135 ppm
- Paper path: duplex
- Resolution: 600, 300 spi
- Finisher: 2-tray Normal
- Default; Order:1 to N
- Feeders:
- Feeder 1: UsLetter::white:75
- Feeder 2: A4::white:75
- Feeder 3: 420x297::white:75
- Feeder 4: UsLedger::white

**GOOD IMPRESSIONS SUCCESSFULLY DELIVERED:
2478635**

SHEETS PRINTED IN IOT DIAGNOSTIC MODE: 362

9. Managing accounting files and logs

The DocuPrint NPS/IPS printer controller maintains accounting files and log files to help you in system administration. You should periodically review these files and delete those that you do not need. The sections in this chapter provide the commands necessary for these tasks.

Maintaining accounting files

Accounting files consist of a list of records of printed jobs. You can use these files for statistical analysis or billing. There are several different versions of accounting files you can use.

NOTE: Basic accounting information (such as the date of job submission, the number of pages printed, and the time it took to print them) is in the lower-left corner of the Job Messages sheet that prints at the end of a job.

For billing purposes, the accounting file maintains the sender name (user name); the name is shown both in the accounting log and on the banner page.

When the recipient name attribute is present, the recipient name string is placed both in the “large print” user name field and in the recipient name field on the banner page (the sender name is placed in the “small print” user name field). When the recipient name attribute is not present, only the sender name is shown (in large print) on the banner page.

The following example shows a portion of an accounting file (version 2).

```
2 "146" "devans" ".login" "<absent>" "ASCII"
<absent>" "1" "<absent>" "<absent>" "<absent>"
<absent>" "<absent>" "<absent>" "<absent>" "rushmore"
"720224170" "720224187" "1160" "2" "<absent>"
"216,279,,white,0" "birdie" "<absent>" "0" "0"
<absent>" "<absent>" "Unix lpr" "<absent>" "<absent>"
2 "145" "mullen" "28-8-2.ps" "<absent>" "PS"
<absent>" "1" "<absent>" "<absent>" "<absent>"
<absent>" "<absent>" "<absent>" "<absent>" "rushmore"
"720223319" "720223340" "3050" "6" "<absent>"
"216,279,white,0" "durango" "<absent>" "0" "0"
"<absent>" "<absent>" "Unix lpr" "<absent>" "<absent>"
```

Each job record consists of the version number and the values for various fields associated with the job. Each field is surrounded by quotes. Fields for which no values have been set are shown as "<absent>."

Accounting file versions

There are four versions of the accounting file, referred to as "version 2," "version 3," "version 4," and "version 5". They are nearly the same.

- Version 2 is the default format that has been used on all NPS/IPS systems prior to release 1.6.1.
- Version 3 logs 13 more attributes than version 2, and it displays multiple media.
- Version 4 logs all version 3 values plus exception page values in addition to cycle exceptions.
- Version 5 logs all version 4 values plus accounting information for the CumulativePagesDone, CumulativeCopiesDone, and CumulativeBlankBacksAdded attributes.

The version is selected during installation or by using the Configure utility to change the jpm.accounting.format parameter. The version that your system is using is indicated by the number "2" or "3" at the beginning of a line.

Job record fields for versions 2 and 3

The order and meaning of the fields in a job record for both versions 2 and 3 is shown below. They are the same except for the media attribute.

JobID=<job ID number>
Refers to the job ID number

- SenderName=<sender name>
Refers to the job sender name that appears on the header page that prints with the document.
- DocumentName=<document name>
Refers to the document name that appears on the header page that prints with the job.
- DocumentDate=<document date>
Refers to the document date that appears on the header page that prints with the job.
- DocumentFormat=<“PS” | “PS2” | “ASCII” | “PCL” | “PCL5e” | “PCL5c” | “IPDSSOCK” | “IPDSTRACE”>
Refers to whether the format of the document is PostScript level 1, PostScript level 2, ASCII, PCL 5e or 5c, IPDS, or an IPDS trace.
- CopyCount=<number of copies>
Refers to how many copies of the document were printed.
- Priority=<priority number>
Refers to the job priority.
- PageRange=<first page number, last page number>
Refers to the range of pages of the document that were printed.
- Plex=<number>
Refers to whether the document printed simplex (on one side of each page) or duplex (on both sides of each page).
— “1” =simplex
— “2” =duplex
— “3” =tumble duplex
- Orientation=<number>
Refers to whether the orientation of the document is portrait or landscape.
— “0” =portrait
— “1” =landscape
— “2” =inversePortrait
— “3” =inverseLandscape
- Resolution=<“240” | “300” | “600”>
Refers to the printing resolution
- OutputBin=<“0” | “n” >
Refers to the stacker group used for the document, where “n” is the number of the stacker group, for example:
— “0” =Sample Tray (top tray)
— “1” =Stacker group 1
— “2” =Stacker group 2
- HighlightColor=<number>
Refers to the highlight color used in the document.
— “0” =no highlight color
— “2” =red
— “3” =green
— “4” =blue
— “5” =cyan
— “6” =magenta
— “7” =yellow
— “8” =cardinal

- “9” =royalblue
- “10” =ruby
- “11” =violet
- “12” =brown
- “13” =other
- “14” =dontcare

AccountInfo

Refers to any account identification information that appears on the header page that prints with the job.

PrinterName=<printer name>

Refers to the name of the printer used to print the document.

Submission Date=<job submission date>

Refers to the date and time of job submission in Unix time. UNIX time is the number of seconds elapsed since January 1, 1970 at 12:00 a.m. (midnight).

CompletionDate=<job completion date>

Refers to the date and time the job was completed in Unix time. Unix time is the number of seconds elapsed since January 1, 1970 at 12:00 a.m. (midnight).

CPUTime=<time in milliseconds>

Refers to job decomposition time.

PagesPrinted=<number of pages>

Refers to the number of pages printed in the job, not including images printed on either side of any header and trailer pages delivered with the job. Therefore, the sum of the values in this field alone will not match the total number of images printed by the print engine as reported in billing meter A.

Staple=<“0” | “1”>

Refers to the value for the staple attribute.

- “0” =no stapling
- “1” =singlePortrait.

Media=(version 2)<x size, y size, type, color, weight>

Refers to the media used for printing the document. The size is specified in millimeters. A text string indicates the media type and color. The weight is specified in grams per square meter (gsm).

Media=(version 3) multiple entries (if applicable)

Each entry is enclosed in square brackets [<media1 width in mm>,<media1 height in mm>,<media1 type>,<media1 color>,<media1 weight>], [<media2 width in mm>,<media2 height in mm>,<media2 type>,<media2 color>,<media2 weight>]

Example: “[216,279,MAIN,white,75], [216,279,AUX,white,75]”

HostName=<host name>

Refers to the host name that appears on the header page that prints with the job.

Category=<text>

Refers to a user defined category. Otherwise it is shown as “<absent>.”

CancelRequest=<"0" | "1" | "2">

Refers to whether the job was canceled.

- "0" =noCancelRequest
- "1" =cancelRequestedByOperator
- "2" =cancelRequestedByUser.

CompletionStatus=<"0" | "1" | "2" | "3" | "4" | "5" | "6">

Refers to how the print job completed.

- "0" =completed
- "1" =cancelledByOperator
- "2" =cancelledByUser
- "3" =completedWithWarnings
- "4" =completedWithErrors
- "5" =rejected
- "6" =aborted

Message=<message>

Refers to any message that appears on the header page that prints with the job.

ObjectSize=<size in bytes>

Refers to the size of the document file in bytes.

Submitter=<"Unix lpr" | "absent">

Indicates if the job was submitted using lpr print utilities. Otherwise, the field is shown as "<absent>."

DocEndMessage=<message>

Refers to any message that appears on the Job Message sheet that prints at the end of a job.

MapColor=<number>

Refers to the map color that is used in the document.

- "0" =no highlight color
- "2" =red
- "3" =green
- "4" =blue
- "5" =cyan
- "6" =magenta
- "7" =yellow
- "8" =cardinal
- "9" =royalblue
- "10" =ruby
- "11" =violet
- "12" =brown
- "13" =other
- "14" =dontcare

Additional job record fields in version 3

The order and meaning of the additional fields in a job record for version 3 is as follows:

ASCIIFontName=<text>

Refers to the name of the font used for ASCII jobs.

ASCIIFontSize=<number>

Refers to the size of the font used for ASCII jobs.

Disposition=<text>

Refers to the disposition type used for Decomposition Service jobs.

HighlightColorRendering=<number>

Refers to the type of HighlightColorRendering algorithm used.

- “0”=Pictorial
- “1”=Presentation
- “2”=ColorToHighlight
- “3”=ColorTables
- “4”=Automatic
- “5”=defaultRendering

ExceptionPages=multiple entries

Each entry is enclosed in square brackets [<start page>-<end page>, <media1 width in mm>, <media1 height in mm>, <media1 type>, <media1 color>, <media1 weight>], [<start page>-<end page>, <media2 width in mm>, <media2 height in mm>, <media2 type>, <media2 color>, <media2 weight>], etc.

Example: “[1-2,216, 279,MAIN,white,75], [3-4,216,279,AUX,white,75]”

ElideHeader=number

Refers to the use of the ElideHeader attribute.

- “0”=False
- “1”=True

BackgroundForm=text

Refers to the use of a background form.

ForwardedTo=[IP address] (DocID)

Refers to jobs forwarded from one NPS/IPS system to another.

ForwardedFrom=[IP address] (DocID)

Refers to jobs forwarded from one NPS/IPS system to another.

CycleForms=number

Refers to the cycling of background forms for Decomposition Service.

AutoTabShift=number

Refers to the use of the AutoTabShift attribute.

- “0”=False
- “1”=True

MICR mode=number

Refers to MICR printing.

- “0”=False
- “1”=True

Halftone=number

Refers to the use of the Halftone attribute.

- “0”=defaultHalftone
- “1”=Course
- “2”=Medium
- “3”=Fine
- “4”=ExtraFine

The following example shows a portion of an accounting file (version 3).

```
3 "131" "Administrator" "worm" "<absent>" "PS2" "1" "500" "<absent>" "1"
"<absent>" "600" "257" "<absent>" "<absent>" "wishbone" "929572975"
"929573201" "390" "1" "0" "[216,279,,white,75]" "<absent>" "<absent>" "0" "0"
"<absent>" "22765" "<absent>" "<absent>" "<absent>" "<absent>" "<absent>" "<absent>"
"<absent>" "3" "<absent>" "1" "<absent>" "[13.240.113.61] (docID: 91)"
"<absent>" "<absent>" "0" "<absent>" "1"

3 "130" "proton" "docuprint_accounting" "<absent>" "ASCII" "1" "500"
"<absent>" "1" "1" "<absent>" "<absent>" "1" "<absent>" "wishbone"
"929571514" "929571584" "960" "6" "0" "[216,279,,white,75]" "<absent>"
"<absent>" "0" "0" "<absent>" "50041" "<absent>" "<absent>" "<absent>"
"terminal" "7" "<absent>" "<absent>" "<absent>" "<absent>" "<absent>"
"<absent>" "<absent>" "<absent>" "<absent>" "<absent>" "<absent>"
```

Additional fields in version 4 Version 4 dumps all exception page values in addition to CycleExceptions. Version 4 includes all other attributes that are in Version 3.

Dump Accounting command

To keep your system running at optimum speed and to keep the system disk from exceeding its storage limits, you should periodically dump accounting data. If you do not set the system to dump accounting information automatically, you must dump it manually. The following commands will help you in this task.

NOTE: If you do not dump accounting data, the system parsing function slows as accounting data is collected.

The **Dump Accounting** command creates accounting files by copying the files to the system directory (/var/log/docuprint__accounting). You can then delete the files or copy them to a diskette. You should use the **Dump Accounting** command periodically to purge the Job Pool Manager database.

If the /var/log/docuprint__accounting file already exists when you enter the **Dump Accounting** command, any new job accounting information is appended to the existing file, and job ID numbers are not necessarily in chronological order. If you want an entirely new file, enter the **Delete Accounting** command, and then enter the **Dump Accounting** command again.

Access level Administrator

Syntax Dump Accounting

Arguments None

Example This example copies and purges print-job data. Note that you must enter y to confirm the command.

```
PS-admin>Dump Accounting
Are you sure? Y
Dumping accounting data. This may take a while. . . . . dump
complete.
```

Copy Accounting to Floppy command

Use the **Copy Accounting to Floppy** command to copy accounting files to a floppy diskette. Be sure to use the **Dump Accounting** command first.

*NOTE: The **Copy Accounting To Floppy** command copies accounting data to a diskette in compressed bar format. To list the contents of the diskette after using the command, enter **bar -tfZ /dev/fd0c** in a Unix shell window. Names that are listed are in absolute paths. To copy the data from the diskette to a hard drive for further processing, enter **bar -xvfZ /dev/fd0c**. The destinations of these data files are the paths as stored on the diskette.*

Access level Administrator

Syntax Copy Accounting to Floppy

Arguments None

Example This example copies accounting data to a floppy diskette. Note that you must enter yes to confirm that a diskette is inserted.

```
PS-admin>copy accounting to floppy
Floppy disk inserted? ("No" to quit):
yes

Copying accounting data. This may take a while. . . . . copy
complete.
```

Delete Accounting command

Use the **Delete Accounting** command to delete accounting data.

Access level Administrator

Syntax Delete Accounting

Arguments None

Example This example deletes accounting data. Note that you must Enter **y** to confirm the command.

```
PS-admin>Delete Accounting
Accounting file is dated January 7, 1998 3:32:58 pm PST
Do you really want to delete the accounting data?
y
Accounting data deleted
```

Managing DocuPrint NPS/IPS log files

The DocuPrint NPS/IPS printer controller maintains logs containing SunOS, Diagnostic, as well as Xerox Client and printer controller activity messages. Each log is copied to a file in the system directory (/var/log); an extension indicates the day (for example, .Mon). The directory holds logs for one week.

DocuPrint NPS/IPS printer controller software enables you to list, display, delete, or copy one or all of the logs to a diskette as described in the following commands.

NOTE: The "DocuPrint" log is limited to 256 KB to prevent it from filling the disk.

NOTE: A nightly cron job automatically copies the logs and deletes logs older than a week. If you prefer to power down the NPS/IPS controller overnight, then you will need to change the time at which the cron job is run.

NOTE: The availability of the logs depends on how long the system has been running.

List Logs command

Use the **List Logs** command to list all logs in the system directory (/var/log) for the past week.

Access level Administrator or Operator

Syntax List Logs

Arguments None

Example This example shows the results of the **List Logs** command:

```
PS-op>list logs

Log name          Size      Last Update
/var/log/DocuPrint 3196 Jan 2, 1998 9:49:10 am PST
/var/log/DocuPrint.Fri 998 Jan 2, 1998 5:01:30 pm PST
/var/log/DocuPrint.Mon 140 Jan 5, 1998 5:36:48 pm PST
/var/log/DocuPrint.Thu 0 Jan 8, 1998 4:58:45 pm PST
/var/log/DocuPrint.Tue 20 Jan 6, 1998 9:26:21 pm PST
/var/log/syslog 0 Jan 2, 1998 9:51:15 pm PST
/var/adm/messages 6534 Jan 8, 1998 9:43:24 pm PST
/var/adm/messages.0 1808 Jan 3, 1998 3:10:24 pm PST
```

Show Log command

Use the Show Log command to display all or part of the log you specify.

Access level Administrator, Operator, or User

Syntax Show Log

Arguments None. You are prompted to enter the number of the log that you want to display, then the number of lines you want to see.

Example This example shows the last two lines of log 2:

```

PS-admin>Show Log
 1  Quit
 2  /var/log/DocuPrint
 3  /var/log/DocuPrint.sequencer
 4  /var/log/DocuPrint.sequencer.Thu
 5  /var/log/DocuPrint.Thu
 6  /var/log/syslog
 7  /var/adm/messages
 8  /usr/spool/xerox/log/NPS/IPS/.log.Thu

Enter choice number:  2
Enter number of lines from the end to show (or "All"): 2

Wed Jan 28 10:29:10 1997 INFO          AppleTalk:          Shutting down
rushmore-duplex: LaserWriter@*

Wed Jan 28 10:29:10 1997 INFO closed   Job Pool Manager:   Database

```

Copy Logs to Floppy command

Use the **Copy Logs To Floppy** command to copy the log you select—or all the logs—to a floppy diskette.

NOTE: Copying logs to a diskette does not delete them from the system.

*NOTE: The **Copy Logs To Floppy** command copies logs in Unix compressed bar format. To list the content of the diskette after using the command, enter **bar -tfZ /dev/fd0c** in a Unix shell window. Names listed are in absolute paths. To copy the data from the diskette to a hard drive for further processing, enter **bar -xvfZ /dev/fd0c**. The destinations of these data files are the paths as stored on the diskette.*

Access level Administrator

Syntax Copy Logs to Floppy

Arguments None. You are prompted to select the log that you want to copy.

Example This example copies all logs to a floppy diskette:

```
PS-admin>copy logs to floppy
Floppy disk inserted? (
"
No
"
to quit):
/var/log/DocuPrint
  2 /var/log/DocuPrint.Fri
  3 /var/log/DocuPrint.Mon
  4 /var/log/DocuPrint.Thu
  5 /var/log/syslog
  6 /var/adm/messages
  7 /var/adm/messages.)
  8 /usr/spool/xerox/log/NPS/IPS.log
  9 All
Enter choice number: 9
Copying logs. This may take a while. . . . . copy complete.
```

Delete Logs command

Use the **Delete Logs** command to delete the log you specify.

NOTE: Not all logs can be deleted. Logs that cannot be deleted are automatically truncated.

Access level Administrator

Syntax Delete Logs

Arguments None. You are prompted to select the log you want to delete.

Example This example deletes log 5. Note that you must enter **yes** to confirm the command:

```
PS-admin>delete logs
 1  Quit
 2  /var/log/DocuPrint
 3  /var/log/DocuPrint.sequencer
 4  /var/log/DocuPrint.sequencer.Thu
 5  /var/log/DocuPrint.Thu
 6  /var/log/syslog
 7  /var/adm/messages
 8  /usr/spool/xerox/log/NPS/IPS/.log.Thu
 9  All
Enter choice number: 5
Do you really want to delete /var/log DocuPrint.Thu? yes

Log deleted
```

Print Log command

Use the **Print Log** command to print all of the log that you specify.

Access level Administrator or Operator

Syntax Print Log

Arguments None. You are prompted to select the log you want to print and then the number of copies and plex of the document.

Example The following example prints one copy of log 6 in simplex mode

```
PS-admin>print log
 1  Quit
 2  /var/log/DocuPrint
 3  /var/log/DocuPrint.sequencer
 4  /var/log/DocuPrint.sequencer.Thu
 5  /var/log/DocuPrint.Thu
 6  /var/log/syslog
 7  /var/adm/messages
 8  /usr/spool/xerox/log/NPS/IPS/.log.Tue
Enter choice number: 6
Enter the number of copies to print: 1
Enter plex (Simplex, Duplex, Tumble): simplex

/var/log/syslog submitted as document number 594
```

10. Managing PostScript and PCL fonts

You can install fonts on the printer controller from a CD-ROM or a floppy diskette, and you can delete installed PostScript and PCL fonts from the printer controller.

You can list the fonts on a CD-ROM or floppy diskette (for example, before you install them). You can also list the fonts on the printer controller. You can print any of these lists of fonts, and you can print samples of the fonts installed on the printer controller.

You can terminate the commands for installing and listing fonts by pressing the Control-C or DEL keys.

NOTE: There is a default font for IPDS jobs supplied with the system. Otherwise, fonts are downloaded with the job.

For more information about fonts, refer to the *Xerox DocuPrint NPS/IPS Guide to Using PDL*. For information regarding MICR fonts, see the *Generic MICR Fundamentals Guide*.

Installing fonts

Before you install fonts, enter the **Stop Printing** command and then enter the **List Documents** command to ensure that there are no jobs being processed. Use the following commands to install fonts, as appropriate:

- Install Fonts from CDROM
- Install Fonts from Floppy
- Install PCL Fonts from Floppy

After you install the fonts, enter the **Restart Sequencer** and **Start Printing** commands.

Install Fonts from CDROM command

Use the **Install Fonts from CDROM** command to install PostScript fonts on the printer controller from a CD-ROM.

To ensure that Type 0 fonts install properly on your DocuPrint NPS/IPS, the CD-ROM containing the fonts that you wish to install must either be purchased from Xerox, or must conform to a specification available from Xerox.

Access level	Administrator
Syntax	Install Fonts From CDROM <pattern>
Argument	<pattern> Indicates the pattern of fonts you want to install. The asterisk (*) character matches any string of characters. You can enter * to install all fonts, or <pattern> to install all font files of the specified pattern.

*NOTE: You must enter **Restart Sequencer** after you install fonts.*

Example Installing all fonts from a CD-ROM:

```
PS-admin>Install Fonts From CDROM *
Do you want a confirmation prompt for each file? n
Searching the entire CDROM, please wait...
```

NOTE: If a package number and format is unknown, the following message is displayed:

```
Cannot install a numbered package <pkgnum> from this CDROM
```

Install Fonts from Floppy command

Use the **Install Fonts from Floppy** command to install PostScript fonts onto the printer controller from a floppy diskette.

Access level	Administrator
Syntax	Install Fonts From Floppy
Argument	None

*NOTE: You must enter **Restart Sequencer** after you install fonts.*

Example Installing PostScript fonts from a floppy diskette:

```
PS-admin>
Install Fonts From Floppy
Floppy disk inserted? ("No" to quit): y
Do you want a confirmation prompt for each file? y
Copying files from floppy - please wait ...
```

NOTE: If the diskette differs in density from the previous diskette or from the default format, the following messages may appear:

```
fd0: read failed (40 1 0)
fd0: bad format
fd0: read failed (40 0 1)
fd0: bad format
```

The operating system eventually determines the correct format unless the format is unrecognizable or the diskette is damaged.

NOTE: The message "No font files found on floppy" appears if no appropriate fonts are found on the diskette. "READ FAILED [nn nn nn]" and "fd0:CRC error blk nnn" messages may indicate that the diskette is damaged.

Install PCLFonts from Floppy command

Use the **Install PCLFonts from Floppy** command to install HP PCL fonts onto the printer controller from a floppy diskette.

Access level	Administrator
Syntax	Install PCLFonts From Floppy
Argument	None

*NOTE: You must enter **Restart Sequencer** after you install fonts.*

Example Installing PCL fonts from a floppy diskette:

```
PS-admin>
Install PCLFonts From Floppy
Floppy disk inserted? ("No" to quit): y
Do you want a confirmation prompt for each file? y
Copying files from floppy - please wait ...
```

NOTE: If the diskette differs in density from the previous diskette or from the default format, the following messages may appear:

*fd0: read failed (40 1 0)
fd0: bad format
fd0: read failed (40 0 1)
fd0: bad format*

The operating system eventually determines the correct format unless the format is unrecognizable or the diskette is damaged.

NOTE: The message "No font files found on floppy" appears if no appropriate fonts are found on the diskette. "READ FAILED [nn nn nn]" and "fd0:CRC error blk nnn" messages may indicate that the diskette is damaged.

Deleting fonts

You can use the **Delete Fonts** command to delete all installed PostScript or PCL fonts, a specific pattern of installed fonts, or a specific installed font file on the printer controller.

Before you delete fonts, enter the **Stop Printing** command, and then enter the **List Documents** command to ensure that there are no jobs being processed.

After you delete fonts, enter the Restart Sequencer and Start Printing commands.

*NOTE: If you are using a MICR system, you should be sure to use the **Restart Sequencer** command after deleting MICR fonts. This procedure clears MICR fonts from system memory.*

NOTE: For PCL fonts, you can only delete the fonts that you install. Fonts that are loaded with the system software cannot be deleted using this command.

Access level	Administrator
Syntax	Delete Fonts <path>/<fontname>
Argument	<path> Indicate the path for the fonts you want to delete. For PostScript fonts, specify ps/<fontname> or xerox/ps/<fontname>. For PCL fonts, specify pcl/<fontname> or xerox/pcl/<fontname>. <fontname>

You can specify a specific font name or use the asterisk (*) character to match any string of characters. You can enter * to delete all fonts, or * as part of a name to delete all font files of the specified pattern.

Example Deleting all PostScript fonts on the printer controller—confirming each deletion:

```
PS-admin>delete fonts ps/*
Deleting ALL fonts! Hold <CONTROL> and press <C> to cancel
Do you want a confirmation prompt for each file? yes
Delete xerox/ps/palatino-roman? no
Delete xerox/ps/palatino-bold? yes
Delete xerox/ps/palatino-italic? no
Delete xerox/ps/palatino-bolditalic? yes
```

Example Deleting all PostScript fonts on the printer controller without confirming each deletion:

```
Do you want a confirmation prompt for each file? no
Deleting xerox/ps/palatino-roman
Deleting xerox/ps/palatino-bold
Deleting xerox/ps/palatino-italic
Deleting xerox/ps/palatino-bolditalic
Deleting xerox/ps/avantgarde-book
Deleting xerox/ps/avantgarde-bookoblique
Deleting xerox/ps/avantgarde-demi
Deleting xerox/ps/avantgarde-demioblique
```

Example Deleting PostScript fonts of the avantgarde pattern:

```
Ps-admin>Delete Fonts xerox/ps/*avantgarde*
Deleting xerox/ps/avantgarde-book
Deleting xerox/ps/avantgarde-bookoblique
Deleting xerox/ps/avantgarde-demi
Deleting xerox/ps/avantgarde-demioblique
```

Example Deleting the PostScript avantgarde-demi font file:

```
Ps-admin>Delete Fonts xerox/ps/avantgarde-demi
Deleting xerox/ps/avantgarde-demi
```

NOTE: You need not enter xerox/ in the path with the font name. This applies to both PostScript and PCL fonts.

Listing fonts

Three commands let you list the fonts on a CD-ROM or floppy diskette or on the printer controller. For a CD-ROM or a floppy diskette, you can list all available fonts or a specific pattern of fonts. For the printer controller, you can list the fonts in a specific font file as well. You can also print lists and samples of fonts.

List CDROM Fonts command

Use the **List CDROM Fonts** command to list all available fonts or a specific pattern of fonts on a CD-ROM.

Access level	Administrator
Syntax	List CDROM Fonts <pattern>
Argument	<pattern> Indicates the pattern of fonts you want to list. The asterisk (*) character matches any string of characters. You can enter * to list all fonts, or <pattern> to list all font files of the specified pattern.

Example Listing the fonts on a CD-ROM:

```
PS-admin>List CDROM Fonts <pattern>
```

List Floppy Fonts command

Use the **List Floppy Fonts** command to list all available fonts or a specific pattern of fonts on a floppy diskette.

Access level	Administrator
Syntax	List Floppy Fonts <pattern>
Argument	<pattern> Indicates the pattern of fonts you want to list. The asterisk (*) character matches any string of characters. You can enter * to list all fonts, or <pattern> to list all font files of the specified pattern.

Example Listing all fonts on a floppy diskette:

```
PS-admin>List floppy fonts
Floppy disk inserted? ("No" to quit): y
Files On Floppy:
cob____.afm
cob____.inf
cob____.pfb
cobo____.afm
cobo____.inf
cobo____.pfb
com____.afm
com____.inf
com____.pfb
(More)
```

List Fonts command

Use the **List Fonts** command to list all available fonts, a specific pattern of fonts, or a specific font file on the printer controller.

Access level	Administrator, operator, and user
Syntax	List Fonts <path> <pattern>
Argument	<p><pattern> Indicates the pattern of fonts you want to list. The asterisk (*) character matches any string of characters. You can enter * to list all fonts, or <pattern> to list all font files of the specified pattern.</p> <p><path> Use /ps for PostScript fonts or /pcl for PCL fonts.</p>

Example Listing all fonts currently installed on the printer controller:

```
PS-admin>list fonts/ps/ *
xerox/ps/palatino-roman
xerox/ps/palatino-bold
xerox/ps/palatino-italic
xerox/ps/palatino-bolditalic
xerox/ps/avantgarde-book
xerox/ps/avantgarde-bookoblique
xerox/ps/avantgarde-demi
xerox/ps/avantgarde-demioblique
(More)
```

Example Listing all fonts of the avantgarde pattern:

```
PS-admin>list fonts ps/avantgarde*
xerox/ps/avantgarde-book
xerox/ps/avantgarde-bookoblique
xerox/ps/avantgarde-demi
xerox/ps/avantgarde-demioblique
```

Example Listing all fonts in the xerox/ps/avantgarde-demi file:

```
PS-admin>list fonts xerox/ps/avantgarde-demi
xerox/ps/avantgarde-demi
```

Print Font List command

Use the **Print Font List** command to print a list of specific fonts or of all available fonts on the printer controller.

Access level	Administrator or operator
Syntax	Print Font List <pattern> <copies> <plex>
Argument	<p><pattern> Indicates the pattern of fonts you want to print. The asterisk (*) character matches any string of characters. You can enter * to print all fonts, or <pattern> to print all font files of the specified pattern.</p> <p><copies> Specifies how many copies of the list you want to print</p> <p><plex> Specifies simplex, duplex, or tumbleduplex</p>

Example Printing 17 copies of a list of avantgarde fonts in simplex mode:

```
PS-admin>print font list ps/avantgarde* 17 simplex
```

Print Font Sample command

Use the **Print Font Sample** command to print samples of the PostScript fonts installed on the printer controller.

Access level	Administrator or operator
Syntax	Print Font Sample <name> <pointSize> <numChars> <copies>
Argument	<p><name> Specifies the name of the font.</p> <p><point size> Specifies the point size of the font you want to sample. Use a number between 6.0 and 24.0.</p> <p><numChars> Specifies the number of characters to print ("128" or "256").</p> <p><copies> Specifies how many copies of the sample you want to print.</p>

Example Printing one copy of a sample of 256 12-point Helvetica characters (PostScript font):

```
PS-op>print font sample helv* 12 256 1
Print Fonts Sample xerox/ps/helv* at November 26, 1999 2:03:49
pm PDT
submitted as document number 651
```

Print PCLFont Sample command

Use the **Print PCLFont Sample** command to print samples of the PCL fonts installed on the printer controller.

Access level	Administrator or operator
Syntax	Print PCLFont Sample <name> <SymSet> <Height> <NumChars> <Copies>
Argument	<p><name> Specifies the name of the font.</p> <p><symSet> Specifies the symbol set of the font (for example, 8U). You can also enter "default" to specify the default symbol set.</p> <p><height> Specifies the size of characters to print, between 6.0 and 24.0. For bitmap fonts, the height entry is ignored, and the correct height of the bitmap font is printed.</p> <p><numChars> Specifies the number of characters to print ("128" or "256").</p> <p><copies> Specifies how many copies of the sample you want to print.</p>

Example Printing one copy of a sample PCL font:

```
PS-op>print pclfont sample
Enter a short name for the font: E13B
Enter the SymSet: 0U
Enter the height [0.0 ..24.0]: 9.0
Number of Characters (128 or 256): 256
Enter the number of copies to print: 1
Print PCLFontSample xerox/pcl/E13B at July 8, 1999 10:08:38 am
PDT
submitted as document number 65
```

11. Managing forms

A form is a print-ready file that can be printed on demand, and, if desired, merged with variable data. A form may consist of one or more pages that can be used selectively. Forms are created using the Decomposition Service capability. There are various types of forms, each with different characteristics.

This chapter provides the syntax and arguments of these commands:

- **Print Form List** prints a list of available forms.
- **Print Form Sample** prints a copy of a specified form.
- **Delete Forms** removes forms from the system.

For more information on creating and working with forms, refer to the *Decomposition Service and Tools Guide*.

NOTE: When using Decomposition Service forms with IPDS jobs, you should test the application, as output may not be as expected.

For more information on using forms and Decomposition Service, refer to the *Decomposition Service and Tools Guide*.

Print Form List command

Use the **Print Form List** command to print a list of available forms.

Access level Administrator or Operator

Syntax Print Form List <pattern> <copies> <plex>

Arguments The following arguments are available:

- `<pattern>`
Indicates the pattern of form names that you want to list. The asterisk (*) character matches any string of characters. You can enter * to list all forms, or `<pattern>` to list all form files of the specified pattern.
- `<copies>`
Specifies how many copies of the list you want to print.
- `<plex>`
Specifies the print mode (simplex, duplex, or tumble duplex).

Example This example prints one copy of a list of all forms in simplex mode:

```
PS-op>print form list
Enter the form name pattern: *
Enter the number of copies to print: 1
Enter plex (Simplex, Duplex, Tumble): Simplex
Print Forms List * at January 7, 1998 3:28:11 pm PST
submitted as document number 595
```

List Forms command

Use the **List Forms** command to display a list of available forms.

Access level Administrator or Operator

Syntax List Forms `<pattern>`

Arguments `<pattern>`

Indicates the pattern of form names that you want to list. The asterisk (*) character matches any string of characters. You can enter * to list all forms, or `<pattern>` to list all form files of the specified pattern.

Example This example lists all the available forms:

```
PS-admin>list forms
Enter the form name pattern: *
Name      Pages  Format      Date Created
sfca      6      SaveMaskG4  June 14, 1998  12:55:39 pm PDT
```

Print Form Sample command

Use the **Print Form Sample** command to print a copy of the specified form(s).

Access level Administrator or Operator

Syntax Print Form Sample <pattern> <copies> <plex>

Arguments The following arguments are available:

- <pattern>
Indicates the pattern of forms that you want to print. The asterisk (*) character matches any string of characters. You can enter * to print all forms, or <pattern> to print all form files of the specified pattern.
- <copies>
Specifies how many copies of the forms you want to print.
- <plex>
Specifies the print mode (simplex, duplex, or tumble duplex).
- <media>
Specifies the media in the format size:type:color:weight.
NOTE: The media that is specified for the form must match the size of the form that was saved.

Example This example prints one copy of all sample forms in simplex mode:

```
PS-op>print form sample
Enter the form name pattern: *
Enter the number of copies to print: 1
Enter plex (Simplex, Duplex, Tumble): Simplex

Enter media specification: USLetter::white
Print Forms Sample * at January 7, 1998 3:28:11 pm PST
submitted as document number 595
```

Delete Forms command

Use the **Delete Forms** command to delete forms that are installed on the system. The system prompts you with the option of confirming the deletion of each form pattern.

Access level Administrator

Syntax Delete Forms <pattern>

Argument <pattern>

Indicates the pattern of forms that you want to delete. The asterisk (*) character matches any string of characters. You can enter * to delete all forms, or <pattern> to delete all form files of the specified pattern.

12. Using Wizard Mode or UNIX shell

This chapter provides guidelines for working in Wizard Mode and in the UNIX shell from the background menu. It discusses procedures that may be accessed through Wizard Mode or the UNIX shell—setting a telnet greeting for remote access users, enabling the lpr security option, recovering the Job Pool Manager database, and removing orphan data files.

The following procedures discuss possible uses of Wizard Mode; however, it should be noted that Wizard Mode is not recommended on the DocuPrint. Instead, the UNIX Command Tool can be enabled at installation and accessed from the background menu when desired.

Using Wizard Mode

The following are guidelines for working in the Wizard Mode.

- Use the <BACKSPACE> key to delete a character. Do not use the key.
- Do not use *vi* commands in Wizard Mode.

To use the *vi* command at the printer controller, you may use either of these two methods:

- Use the background menu to start a command tool.
- If the command tool is not available on the background menu:
 1. Enter **Wizard** mode.
 2. Enter **cmdtool &** to start a command tool.
 3. Launch a second command tool from the first, and exit the first command tool. Use the second command tool to execute shell commands.

NOTE: The DocuPrint NPS/IPS user interface may appear to hang until you exit the first command tool.

You can use the above steps and the **su** command to access root privileges. Do not use the **su** command before starting a command tool and use the **su** command only when necessary.

- If you are accessing the printer controller remotely through Telnet, do not start any window-based tools, such as cmdtool, in Wizard Mode. If you do, the window opens on the printer controller not on the client workstation, and the client workstation appears locked up. To restore the prompt at the client workstation, quit the tool from the printer controller.

CAUTION

*Use the **su** command only when necessary. It is possible to damage system software, requiring a reinstallation of software.*

Using the UNIX shell

In most instances, you can use the UNIX shell from the background menu instead of Wizard Mode.

You can select the shell from the background menu when UNIX command tool is enabled during installation.

You can use any available editor (such as *vi* or **textedit**) from the UNIX command tool.

Mounting a CD-ROM or a floppy diskette

In order to access files or functions on a CD-ROM or a floppy diskette, you must first mount the medium, using one of the commands described in the following sections.

Mount CDROM command

Obtain a command tool from the background menu and enter the UNIX superuser password. (The UNIX directory `/cdrom` must exist before running this command.)

Access level UNIX superuser

Syntax CDROM Mounter mount

Arguments None.

NOTE: This method for mounting the CDROM is not necessary for installing fonts. The font installation commands automatically mount the CDROM.

Unmount CDROM command

Obtain a command tool from the background menu and enter the UNIX superuser password. (The UNIX directory /cdrom must exist before running this command.)

Access level UNIX superuser

Syntax CDROM Mounter umount

Arguments None.

Mount Floppy command

This command mounts a DOS-formatted floppy diskette.

Obtain a command tool from the background menu and enter the su command, when prompted enter UNIX superuser password. Enter **mount /pcfs**.

Access level UNIX superuser

Syntax mount /pcfs
mount -r /pcfs if the diskette is write-protected.

Arguments None.

NOTE: This method for mounting the diskette is not necessary for installing fonts. The font installation commands automatically mount the diskette.

Creating a telnet greeting message

An administrator can create an ASCII greeting message that client workstations display when users telnet to the DocuPrint printer controller:

1. Use a UNIX editor in a UNIX shell at the printer controller to create the message and name the file “greeting”.
2. Add the greeting file to the `/var/db` directory at the printer controller. The greeting file must be resident on the system and not a symbolic link.

The DocuPrint system searches for a file named `/var/db/greeting` whenever a telnet connection is made to the printer controller, and the client workstation displays the greeting message.

NOTE: The printer controller does not display the greeting message.

Example Following is an example of a greeting message a client workstation can display when a telnet connection is made.

```
>
telnet <DocuPrint printer controller>
Trying xx.xx.xx.xx. . .
Connected to dpserver
Escape character is '^]' .
DocuPrint System Administration <DocuPrint printer controller>

This system is restricted to legitimate company business purposes
and is subject to audit. The unauthorized access, use or
modification of this computer system or the data contained therein
or in transit to or from, is a criminal violation of federal & state law.

DocuPrint version: 7.1: Mon July 3 12:34:58 PDT 2000 Copyright
(C) 1983-2000 by Xerox Corporation. All rights reserved.
```

Enabling the lpr security option

The lpr security option provides additional security when you are using the **lpr** command. The system accepts jobs that are submitted by lpr only if the host sending the job is listed in the hosts.lpd file in the **/etc** directory. If the hosts.lpd file does not exist, the system accepts jobs from any host on the network.

Follow these steps to create a hosts.lpd file and add a host name with an IP network address:

NOTE: You may obtain the command tool from the background menu, or you may use Wizard Mode.

1. Obtain a command tool from the background menu.
2. Use the **su** command to access root.
3. Enter the superuser password when prompted.
4. Enter **cd /etc**
5. Create a hosts.lpd file using a UNIX editor and enter the client names.

hosts.lpd file:	sidney
	troy
	teddy

6. Save the hosts.lpd file you created.
7. Edit the hosts file using a UNIX editor and enter the IP network addresses and client names.

hosts file:	127.1.98.6	sidney
	127.1.45.98	troy
	127.1.67.9	teddy

NOTE: For a PC client running FTP TCP/IP, ensure that the IP address of the PC client is also in the Pctcp driver section of the pctcp.ini file.

8. Save the hosts file you edited.
9. Enter **exit** to exit superuser mode.

Removing orphan data files

Orphan data files are files that do not belong to any existing job. They are left in the `/var/spool/xerox/netqreq` directory if the printer controller crashes or is rebooted while clients are submitting jobs. Remove orphan data files from the directory only if Xerox Client Software is enabled. To remove these files:

NOTE: You may obtain the command tool from the background menu, or you may use Wizard Mode.

1. At the `PS-admin>` prompt In the DocuPrint Print Service window, enter **stop queueing**.
2. Obtain a command tool from the background menu.
3. Enter **cd /var/spool/xerox/netqreq** to access the netqreq directory.
4. Enter **ls -lt** to display a list of files sorted by date.
5. Review the list to see if any source files (files that do not start with "X") are dated earlier than the last reboot.

If such files exist, use the `grep <sourcefilename> *` command to determine if they are orphan files. If this command does not return any text, remove the files using the `rm <sourcefilename>` command.

6. Enter **exit** if you are in Wizard Mode and return to the Administrator level of commands.
7. Enter **start queueing**.

13. Handling DigiPath jobs

This chapter describes how to install NFS for DigiPath/XDOD jobs, and provides instructions for handling problems with print jobs from XDOD/DigiPath clients.

NOTE: The system administrator must enable FTP on the DocuPrint NPS/IPS to print from XDOD 4.0. During installation, or using Configure, answer “yes” to “Enable FTP (Required to retrieve print clients with FTP from other machines on the network)?”

Configuring DocuPrint NPS/IPS for XDOD/DigiPath

NOTE: DocuPrint does not support NFS except in conjunction with XDOD/DigiPath products.

To enable some DocuPrint NPS/IPS features, you must specify certain options when you install DocuPrint NPS/IPS printer controller software. During installation, the installation script displays the following prompt:

Set up XIPP prescan filter for XDOD clients (Y or N) [n]:

Enter **y** (or **yes**) at this prompt.

You should also set up a separate subdirectory on DocuPrint NPS/IPS for each application that transfers files to it. The name of the subdirectory should match the <appName> used in the pathname to transfer files to DocuPrint NPS/IPS, as described in “Importing the DocuPrint directory.”

Use an installation script to create the <appName> subdirectory (or subdirectories). Run this script after normal DocuPrint NPS/IPS installation is successfully completed. You cannot use NFS to create these subdirectories on DocuPrint.

Configuring NFS for XDOD 3.1 or earlier

At system startup, you must start an NFS service and export the appropriate subdirectories.

A daemon, running on the DocuPrint NPS/IPS printer controller, provides NFS services. You must start this NFS daemon because the standard DocuPrint NPS/IPS configuration does not run an NFS daemon for system security reasons. To start the appropriate service:

- If the computer that is transferring files to the printer controller over NFS is a Unix system, use the default NFS daemon. See “Configuring the default NFS daemon” for information on configuring this daemon.
- If the computer that is transferring files is not a Unix system, you may need to place an appropriate daemon on the printer controller to be started each time the server is restarted. Refer to “Using an alternate NFS daemon” for more information.

Configuring the default NFS daemon

A DocuPrint NPS/IPS system acts as an NFS server using a standard Sun NFS daemon. This daemon should operate with client systems that are also running Unix, unless XDOD/Digipath third-party daemons are not supported by the client.

On a Solaris system, the file is called **/etc/dfs/dfstab**. As long as the appropriate file exists, the default NFS daemon is started each time the printer controller is restarted.

Verifying correct installation

If resubmitting the job does not resolve your problem with an XDOD/Digipath job, verify that the system was installed and configured correctly:

CAUTION

Do not add the XDMS subdirectory manually.

- Verify that xipp is enabled for XDOD/Digipath by performing the following:
 1. At the PS-Admin> prompt, enter **Configure**.

2. Enter the superuser password.
 3. Select Option 5.
 4. Look for the line that says xipp.enable: "Y".
- **If you are running SunOS 4.1.x**, verify that the Beame & Whiteside NFS daemon (bwnfsd) is running for XDOD/ DigiPath installations prior to 4.0. To do so, obtain a command tool from the background menu and enter the following command:
ps -axc | grep bwnfsd | grep -v grep.
 - If the bwnfsd is running, a line describing the daemon is displayed.
 - If the bwnfsd is not running, restart the system, then try the verification again. If the daemon is still not running, contact your service representative.

Removing .gfi directories

If a job submitted from an XDOD client was canceled or aborted, the partially complete .gfi directory is not automatically deleted from the /var/spool/data/xdms directory. To remove unwanted .gfi directories:

1. In the DocuPrint Print Service window, at the PS> prompt, enter **privilege administrator**.
2. Enter **stop all** to stop printing and queueing.
3. Obtain a command tool from the background menu.
*NOTE: Using Wizard Mode to delete unwanted .gfi directories is **not** recommended.*
4. Enter **cd /var/spool/data/xdms**.
5. Enter **pwd** to verify you are in the /var/spool/data/xdms directory.
6. Use the **su** command to access root.
7. Enter the superuser password.
8. Enter **ls -lt** to display a list of subdirectories sorted by date.
9. Enter **rm -r <name>.gfi** to remove each .gfi directory with a date earlier than the current date.
10. Enter **exit** to exit superuser mode.
11. Select **quit** to close the command tool window.

14. MICR printing

The 96, 4635, and 180 MICR NPS/IPS systems produce a magnetic ink character recognition (MICR) line on negotiable and turnaround documents such as checks and bills. The MICR NPS/IPS models print documents using magnetic ink and special fonts to create machine-readable information that allows for quick document processing.

Although, MICR is generally used to print accounting and routing information on blank checks and other negotiable documents, the magnetic encoding capabilities can be used for any printed output.

For more information on creating MICR documents and using MICR tools, refer to the *Generic MICR Fundamentals Guide*, provided with your NPS/IPS.

Considerations for MICR printing on NPS/IPS models

The MICR fonts are supplied with the printer. PostScript and PCL versions of the fonts are provided on a 3.5 inch floppy diskette.

**MICR font
description**

Xerox provides a set of 300 dpi PostScript and PCL E13B MICR fonts for use on the DocuPrint MICR NPS/IPS models. These fonts can be loaded onto a DocuPrint NPS/IPS system using the font installation commands described in the Guide to Configuring and Managing the System.

Xerox provides a set of 300 dpi E13B and CMC7 fonts that can be loaded on a variety of hosts for IPDS printing.

It is critical that the MICR font character raster patterns and metrics not be modified in any way and that no new characters are added. The MICR fonts supplied with the NPS/IPS must be used in order for the Xerox MICR Guarantee to be valid. The Xerox supplied MICR fonts are required to optimize the quality of the MICR line and to ensure excellent performance.

PostScript font The PostScript version of the E13B font is:
PostScriptFont file name: e13b.ps (internal name, E13B)
Point size: 9.12
Font type: Type 3
The internal name E13B and point size, 9.12, is used to select the Xerox PostScript MICR fonts.

PCL font The HP PCL escape sequences that are used to select the Xerox E13B MICR fonts are:
E13B:
ESC >&100<ESC > (0U < Esc >(s0p8.00h9.00v0s0b0T

Security issues

NPS/IPS MICR printers do not offer the same security or audit features found on printers like the 4635 MX LPS.

To enhance security, you will need to delete MICR fonts after use, and install them before the next use.

Refer to the *Generic MICR Fundamentals Guide* for more information.

Clearing memory After all PostScript and PCL MICR jobs have been printed and the MICR fonts have been deleted off of the DocuPrint NPS/IPS disk, if there is concern related to access of residual contents of MICR fonts in memory on the DocuPrint NPS/IPS system, the sequencer should be restarted.

Although it is extremely difficult to retrieve contents in memory, using the **Restart Sequencer** command clears all fonts in memory and force the PostScript and PCL interpreters to reload fonts into memory for the next job.

Clearing jobs To confirm that there are no MICR jobs left on the DocuPrint NPS/IPS system, enter the **List Documents** command to list “Held” and “Ineligible” documents. If these documents have already been successfully printed and are duplicate jobs, they should be deleted by using the **Cancel Documents** command. If the document still needs to be printed, use the appropriate procedures to determine the cause of the problem and take the actions to correct the problem. Though the MICR jobs are still shown when the **List Documents** command is used to list all or completed jobs, as long as the document status is “Complete,” only the attributes of the jobs have been kept. The job itself has been deleted from the spool area.

15. Performing color calibration

This chapter describes the procedure and commands for performing color calibration for your DocuColor 2060 NPS/IPS.

A color calibration consists of a set of files that include an International Color Consortium (ICC) standard profile. For information on the standard, see www.color.org.

Setting color calibrations

Calibration is essential to ensuring good color quality for your documents. The purpose of calibration is to measure how the DocuColor 2060 is printing the requested colors and to then make any corrections that are required.

A color calibration is created at startup using the BuildProfile argument to the **Print Color Calibration Target** command. Calibrations may also be made for different requirements (for example: media category, CMYK, or emulation).

To calibrate your system, you use the DTP41 spectrophotometer from X-rite. Accompanying this device is a manual, and a color strip that has the same serial number as your DTP41.

NOTE: You should be very careful to keep the color strip in a safe place. If you lose it, it is expensive to replace, and it may take some time to obtain the replacement. The strip is unique for each spectrophotometer.

When to perform calibration

Calibration can be performed daily, or at any time when there is the possibility that the printer colors may have changed from what they were in an earlier calibration. Some of the reasons why printers need color calibration are:

- Uncalibrated equipment produces unpredictable, unreliable image quality and color reproduction.

- Toner colors are not absolutely pure, so the calibration procedure helps the system adjust the mix of toners to correspond to a standard color sample.

You must calibrate whenever service is performed on your system, or when you replace toner.

A recommendation for determining if the system needs calibration is to print a copy of the “colorcurves” sample document immediately after calibration. Keep the printed pages in a folder as an example. Each day, before beginning printing, print the “colorcurves” sample document again and compare it to the initial one. When color drifts, perform another calibration. To print colorcurves, enter **Print Sample Document colorcurves** and other parameters as appropriate.

Evaluating color quality

Use the colorcurves sample document as a standard for evaluating output and to determine if calibration is required. This document was designed for this purpose, and, since it never changes, is useful as a means of comparing color at different times.

To judge calibration, the most important measure is gray balance. The first page of the colorcurves sample document has a series of color and gray bars on the top half of the page. Look at the bottom four bars—there are two pairs of gray bars. When the printer is calibrated properly, the bottom two bars should match each other, and the two bars above them (third and fourth from the bottom) should match each other as well. If they do not, this is a good indication that you should calibrate the printer.

Another way to judge color quality is to check to see that the color bars are dark on the left and lighter on the right of the page. The very top bar should be red.

The second page of the colorcurves document is not useful for judging calibration. The third page has color bars like the first page. These should match in the same way as those on the first page.

Calibration procedure

In order to properly predict, manage, and minimize color variables, hardware and software must be calibrated when the system is first installed, and periodically as color shifts.

In general, it is recommended that you use high quality paper, of the whitest white, when you perform the calibration procedure.

You may calibrate the system for different types of paper, creating several calibration files. If you do this, you should keep a record of the calibration file name and its purpose. Delete any calibration files you no longer need.

It takes about 15 to 30 minutes to calibrate the printer. You can calibrate while printing, though there may be minor impact on performance.

Use the **List Color Calibrations** command and the **Show Color Calibrations** command for details regarding the settings for existing calibrations.

You may wish to print the colorcurves sample document before performing calibration to use as a comparison. If you do this, use the same type of paper you intend to use for the calibration.

To calibrate the printer, use the following procedure:

1. Ensure that the X-rite DTP41 device is connected to serial port B on the controller.
2. Follow the DTP41 instructions for calibrating that instrument. In general, you take the color strip that is provided with the device and insert it.
3. At the printer controller, enter the command:

Print Color Calibration Target <Type>

Use either **TRC** or **BuildProfile** as the <Type>. This prints a calibration target and displays a feedback window on the controller. The command returns the name assigned to this color calibration; for example:

```
Color Calibration 20010409-16 at April 9, 2001 11:02:15 am  
PDT submitted as document number 22
```

The name is composed of the date in the format YYYYMMDD, followed by an index number. The feedback window also shows the name. You can rename the calibration when it is complete.

If you use BuildProfile instead of TRC, the system builds ICC profiles and CRD files that can be used by job creators. You should use BuildProfile at least once before beginning production, and whenever the printer receives service.

For more information on this command and its arguments, refer to the command description in this chapter.

4. After the command is executed, the printer prints several sheets with calibration target strips. A different color pattern is printed each time you use this command. Each strip is numbered and has a double line that you use as a guide to insert the strip properly into the DTP41.

Take the calibration target sheets printed, and scan each of the numbered strips into the DTP41. Insert them as described in the X-rite manual, and press the black button on the instrument. In general, you line up the double line on the strip with the lines on the DTP41. It may help to place a piece of matching card stock under the sheet as you insert it into the DTP41.

NOTE: Do not put a sheet with color strips under the sheet you are currently scanning, as the color can show through and affect the calibration.

Refer to the feedback window for information as to which strip number to insert. If there is an error, insert the strip again. If you insert the strips in the wrong order, it is not necessary to restart—refer to the feedback window to view which strip to insert next. If you accidentally insert the same strip twice, the system will average the data.

To abort this procedure at any time, close the feedback window.

5. After a successful calibration, you can make that calibration the default. At the controller, enter the command **Set Default Color Calibration <name>**. For example:

Set Default Color Calibration 20010409-16

6. After setting the default calibration, restart the sequencer using the **Restart Sequencer** command.

Once you have successfully completed the calibration procedure, discard the pages with the calibration target strips as they can never be used again.

More on the calibration work flow

A color calibration is created at startup using the BuildProfile argument to the Print Color Calibration Target command. (Calibrations may also be made for different requirements: media category, CMYK emulation, etc.) The BuildProfile argument builds a calibration that has several components, including a TRC, an ICC profile that can be distributed to workstation clients, and PostScript CRD files. From time to time, the printer color drifts, and calibration is needed to correct the color. Use the Print Color Calibration Target command with the TRC argument to build a new TRC. Then use the Set ColorTRC command to associate the new TRC with the profile that has already been distributed to users. If you do this, ICC profile users do not need to get a new ICC profile when the printer is calibrated only to correct printer color drift.

You may have several calibrations that you use for different document types. It is possible to set a new TRC for a profile where the TRC and the profile were created with different settings (for example, halftone or media). The most conservative approach is to not associate TRCs with profiles that were created with different settings, but reasonable results may be obtained when they are mixed.

Use the List Color Calibrations command and the Show Color Calibration command for details regarding the settings for existing calibrations.

Print Color Calibration Target command

Use **Print Color Calibration Target** to print color calibration targets of the selected type to the specified media.

NOTE: A different color pattern is printed every time you use this command. Once the calibration procedure is complete, the pages with the strips should be discarded.

Access level Administrator

Syntax Print Color Calibration Target <type> <CMYK emulation type>
<media category> <media> <halftone><patches_to_average>

Argument The following arguments are available:

- <type>

There are three calibration types you can print using the **Print Color Calibration Target** command:

- TRC

Builds a calibration, adjusting the tone reproduction curves for cyan, magenta, yellow, and black for gray balance and linear lightness (L^* in CIELAB) response.

- BuildProfile

Builds a calibration as above. In addition, this argument constructs an ICC profile that describes the response of the printer using the current calibration. The resulting file can be used with operating systems (such as Windows 98, Windows 2000, or MacOS) or applications that include support for ICC printer profiles. Use this argument at least once before beginning production. The profile file can be transferred to the client workstation using ftp. The profile files are located in the directory /var/db/colortables.

Though the workstation users do not need to transfer a new profile file every time the printer is calibrated, they should be informed that the ICC profiles are available for their use.

- Check

Prints the measured response (using the current calibration) in both text and graphical forms. Does not build a calibration.

- <CMYK emulation type>

Required when using the BuildProfile argument; specifies a standard ink set on which to base a new profile. Allowed values are:

- Density
- EuroscaleCoated
- GrayBal
- JapanStd
- Photo5
- SWOPemulation
- USSheetfedCoated
- USWebCoated (recommended value to use for most applications)

NOTE: Many of these values are commonly found in ICC profiles provided in applications like Adobe PhotoShop. USWebCoated is similar to SWOPemulation, though the black is generally darker on USWebCoated. The system default is based on USWebCoated. In general, most organizations should select one CMYK emulation type for calibration and use it consistently. Those who use ICC profiles should be sure to specify a calibration with the same CMYK emulation type as the ICC profile they have.

- <media category>

Required. Specifies a general media type used for the calibration, without regard to size. This information helps you to track the type of paper used for the calibration. This can be useful since the characteristics affect the calibration.

Available values are: Unspecified, Plain, Gloss, HighGloss, Matte, Bright, VeryBright, UltraBright, BrightGloss, VeryBrightGloss, UltraBrightGloss, BrightHighGloss, VeryBrightHighGloss, UltraBrightHighGloss, BrightMatte

- <media>

Use the optional <media> argument to specify the media to use for the calibration. In general, you should use a high-quality, smooth, white paper.

Coated paper has the advantage that the color measurements have less noise, so a good calibration can be done with a smaller number of patches. To use coated paper, you must put the paper into tray 3, set the coated/uncoated indicator to coated, and set the weight properly.

If you omit the media argument, the system default media is used.

- `<halftone>`

Defaults to “defaultHalftone”. Available values are:

- defaultHalftone: (equivalent to mediumLine)
- coarse: 150 cluster dot
- medium: 200 cluster dot
- mediumLine: 200 line screen (default for the DocuColor 2060)
- fine: 300 line screen
- extraFine: 600 line screen

- `<patches_to_average>`

When the color patches are measured, there is some amount of noise in the measured values. By printing each patch color several times and averaging the results together, the effect of this random noise is diminished and a more accurate measured value is obtained. This naturally results in a more accurate calibration. The cost of doing this is in the additional operator time required to scan the larger number of patches.

With uncoated paper, the paper fibers tend to show through the image, thereby increasing the measurement noise. For a calibration on uncoated paper, use a value of 2 or more for the `<patches_to_average>` argument. This prints more patches, averaging the measurements, which helps compensate for measurement noise.

In general, a value of 2 provides a good result.

The optional `<patches_to_average>` argument defaults to 1.

Set ColorTRC command

Use Set ColorTRC when correcting an existing calibration for printer color drift or to set the TRC back to the one that was created when the profile was built or where the destination and source profile names are the same.

You may have several calibrations that you use for different document types. It is possible to set a new TRC for a profile where the TRC and the profile were created with different settings (for example, halftone or media).

Access level Administrator

Syntax Set ColorTRC <destination profile name> <source TRC or profile name>

Argument The following arguments are available:

- <destination profile name>
Name of the profile for which you want to change the TRC.
- <source TRC or profile name>
Name of the TRC or profile containing a TRC which you want to associate with the destination profile.

List Color Calibrations command

Use **List Color Calibrations** to display all color calibrations whose name matches the specified pattern.

Access level Administrator

Syntax List Color Calibrations <pattern>

Argument <pattern>

Use an asterisk (*) as a wild card character for the pattern. Default for <pattern> is * which lists all calibrations.

Rename Color Calibration command

The calibration name generated by the system is composed of the date in the format YYYYMMDD, followed by an index number. Use **Rename Color Calibration** to rename a specified color calibration using a naming convention you prefer. You can rename the default calibration.

Access level Operator or Administrator

Syntax Rename Color Calibration <name> <new name>

Argument <name>

Use ? for <name> to show a list of valid calibration names.

<new name>

Enter the new name.

Delete Color Calibration command

Use **Delete Color Calibration** to delete a specified color calibration.

Access level Administrator

Syntax Delete Color Calibrations <name>

Argument <name>

Use ? for <name> to show a list of valid calibration names. You cannot delete the default calibration.

Set Default Color Calibration command

Use **Set Default Color Calibration** to make the specified color calibration the default.

Access level Administrator

Syntax Set Default Color Calibration <name>

Argument <name>

Use ? for <name> to show a list of valid calibration names. There is a system default calibration.

NOTE: After setting the default color calibration, you must restart the sequencer.

Show Default Color Calibration command

Use **Show Default Color Calibration** to display the default color calibration.

Access level Administrator

Syntax Show Default Color Calibration

Argument None

A

- access, remote 1-4
- accounting file versions 9-2
- accounting files
 - copying to floppy 9-8
 - deleting 9-9
 - maintaining 9-1–9-9
 - purging 9-7
- administrator
 - accessing commands 1-2
 - changing password 1-3
- ASCII greeting message 12-4
- .attrs file 2-3

B

- background menu 3-3
- backing up
 - site files 2-9
 - virtual printers list 2-11
 - Xerox files 2-10
- Backup Site Files command 2-9
- Backup Virtual Printers List command 2-11
- Backup Xerox Files command 2-10
- banner pages 4-1
- bar compression 2-3, 2-5, 2-6
- billing
 - meter
 - displaying 8-8
 - printing, data 8-11
 - report, printing 8-11
- booting the controller 3-2
- broadcast message
 - utility command 2-1
- Broadcast Message to All Execs command 2-1
- Broadcast message to all execs command 2-1
- browser based access 1-5

C

- calibration
 - evaluating output 15-2

- when to perform 15-1
- canceling commands 1-2
- CD-ROM
 - ejecting 2-2
 - installing 10-2
 - installing software updates from 2-7
 - listing files on 2-8
 - printing files from 2-8
- CE mark xiii
- Change Administrator Password command 1-3
- Change Imager Parameters command 5-30
- Change PCL Imager Parameters command 5-34
- changing imager parameters 5-30
- changing password
 - administrator 1-3
 - operator 1-3
- changing PCL imager parameters 5-34
- color
 - evaluating output 15-2
 - when to calibrate 15-1
- color calibration
 - procedure 15-2
 - work flow 15-5
- commands
 - administrator, accessing 1-2
 - canceling 1-2
 - Configure utility 2-19–2-29
 - copying
 - accounting data to floppy 9-8
 - documents to floppy 2-3, 2-4, 2-5
 - logs 9-11
 - deleting
 - accounting files 9-7, 9-9
 - fonts 10-4
 - forms 11-4
 - logs 9-12
 - entering 1-1
 - installing
 - fonts from disk 10-2
 - PCL fonts from disk 10-3

- licensing 2-15–2-18
- listing 1-1
 - CDROM fonts 10-6
 - floppy fonts 10-6
 - fonts 10-6
 - logs 9-10
- operator, accessing 1-2
- printing
 - font list 10-8
 - font sample 10-8
 - form samples 11-3
 - PCL font sample 10-9
- shortcuts 1-1
- telnet 1-4
- terminating 1-2
- utility 2-1–2-13
- compression
 - bar 2-3, 2-5, 2-6
- configuration
 - choosing remote printer or print server 4-1–4-3
 - differences between RPRINTER and PSERVER 4-1–4-3
- configuration reports
 - printing 2-23
- Configure utility
 - changeable parameters 2-20
 - options 2-23
- Configure utility commands 2-19–2-29
- configuring
 - NFS daemon 13-2
- configuring as PSERVER 4-4
- configuring as RPRINTER 4-5
- controller
 - powering on 3-2
- conventions xix
- Copy Accounting to Floppy command 9-8
- Copy Documents to DOS Floppy command 2-4
- Copy Documents to Floppy command 2-3
- Copy Documents to Tape command 2-4, 2-5
- Copy IOT Fault Data to Disk command 2-18
- Copy Logs to Floppy command 9-11
- copying
 - documents to diskette 2-3
 - documents to DOS diskette 2-4
 - Documents to Floppy command 2-3, 2-4, 2-5
 - logs 9-11

- print-job data 9-8
- to tape 2-4, 2-5
- copying to diskette 2-3
- correcting color calibration 15-9
- corruption problems
 - database 2-28
 - software 2-26
- Create Input Profile command 6-2
- Create Output Profile command 6-2
- Create Profiles command 6-2
- creating profiles 6-2

D

- database
 - corruption 2-28
- date, setting 7-1
- defaults
 - media, setting 5-2
 - options, listing 5-28
- Delete Accounting command 9-9
- Delete Color Calibration command 15-10, 15-11
- Delete Fonts command 10-4
- Delete Forms command 11-4
- Delete Logs command 9-12
- delete output profile command 6-3
- deleting
 - accounting files 9-9
 - fonts 10-4
 - forms 11-4
 - logs 9-12
- Deleting Input/Output profiles 6-3
- diagnostic data, gathering 2-18
- Disable Modem command 2-31
- Disable Remote Shell command 2-32
- diskette
 - copying documents to 2-3
 - copying documents to DOS 2-4
 - ejecting 2-2
 - formatting 2-2
 - installing licenses from 2-17
 - installing software updates from 2-7
 - listing files on 2-3
 - printing documents from 2-9
- diskettes
 - contents, listing 2-3
 - ejecting 2-2
 - formatting 2-2
- Display Billing Meters command 8-8

displaying
 date 7-1
 logs 9-10
 PDL code 2-6
 time 7-1
displaying PDL code 2-6
documentation xx
Dump Accounting command 9-7

E

Eject CD-ROM command 2-2
Eject CDROM command 2-2
Eject Floppy command 2-2
ejecting a CD-ROM 2-2
ejecting a diskette 2-2
Enable Modem command 2-30
Enable Remote Shell command 2-31
enabling
 lpr security option 12-5
entering commands 1-1
Examine Document command 2-6

F

feeder tray attributes, setting 5-4
file locks
 setting maximum 4-6
file server support 4-6
files
 accounting, maintaining 9-1–9-9
 backing up 2-9
 backing up Xerox 2-10
 NPS log, maintaining 9-9
 restoring backed-up site 2-10
 restoring Xerox 2-11

floppy

 see diskette

floppy, see diskette

Font Thicken parameter 5-31

fonts

 deleting 10-4

 HP PCL 10-3

 installing 10-2

 list, printing 10-8

 listing

 all available 10-7

 disk 10-6

 printer controller 10-6

 sample, printing 10-8

fonts, PCL

 sample, printing 10-9
Format Floppy command 2-2
formatting
 diskette 2-2
forms
 deleting 11-4
 managing 11-1
 printing samples 11-3

G

gfi directories, removing 13-3
graphical user interface 1-1
GUI, enable or disable 2-21

H

Halt System command 3-3
host ID
 showing 2-13
HP PCL fonts, installing 10-3

I

imager parameters 5-29–5-32
imager parameters, PCL 5-33–5-35
input profiles 6-1–6-6
Install Feature License command 2-16
Install FlexLicense from Floppy command
 2-17
Install Fonts from CDROM command 10-2
Install Fonts from Floppy command 10-2
Install License command (obsolete) 2-18
Install PCL Fonts from Floppy command
 10-3
Install Remote Update command 2-7
Install Update from CDROM command 2-7
Install Update from Floppy command 2-7
installing
 fonts 10-2
 NFS 13-1
 verifying
 XDOD/DigiPath 13-2

J

job IDs
 resetting 2-12
job processing
 stopping and starting 3-5

K

Kill command 3-6

L

- laser safety ix
- licenses
 - diagnostic 2-15
 - displaying remaining days 2-17
 - installing feature 2-16
 - installing from diskette 2-17
 - showing status 2-17
- licenses, software 2-15
- licensing commands 2-15–2-18
- List CDROM Fonts command 10-6
- List Color Calibrations command 15-10
- List Executives command 1-4, 8-8
- List Files on CDROM command 2-8
- List Floppy Fonts command 10-6
- List Fonts command 10-6, 10-7
- List Forms command 11-2
- List Logs command 9-10
- List Options command 5-28
- List Sample Documents command 8-5
- List Volumes command 8-2

listing

- default options 5-28
- files on CD ROM 2-8
- files on diskette 2-3
- files on tape 2-5
- fonts
 - disk 10-8
 - printer controller 10-8
- logs 9-10

listing commands 1-1

logging in 4-2, 4-6

logs

- copying to floppy 9-11
- deleting 9-12
- displaying 9-10
- listing 9-10
- printing 9-13

lpr

security option, enabling 12-5

M

magnetic ink character recognition see

MICR

Maximum File Locks

setting 4-6

media setting default 5-7

messages

telnet 1-4

MICR

fonts

clearing from memory 14-2

deleting 14-2

fonts for NPS 14-1

security 14-2

tasks for NPS 14-1

modem

connecting 2-30

disabling 2-31

enabling 2-29

switch settings 2-30

Mount CDROM command 12-2, 12-3

Mount Floppy command 12-3

N

NFS

configuring 13-2

installing 13-1

Novell network 4-1

NPS log files, maintaining 9-9

O

operation safety, Europe xi, xiii

operation safety, U. S. x, xi

operator

accessing commands 1-2

changing password 1-3

options

default, listing 5-28

orphan data files, removing 12-6

output profiles 6-1–6-6

ozone production information x

P

parser, IPDS

restarting 3-6

password

changing administrator 1-3

changing operator 1-3

PCL fonts, installing 10-3

PCL parameters

changing 5-36

restoring default 5-40, 5-41

setting 5-36

PCL symbol sets 5-38

PCONSOLE 4-4

PDL

displaying code 2-6

- PDL code, displaying 2-6
- Personality Profile parameters 6-3
- power outage
 - powering off and on after 3-5
- powering off
 - system 3-3
- powering off after power failure 3-5
- powering on
 - controller 3-2
 - system 3-1
- Print Billing Report command 8-11
- Print Color Calibration Target command 15-6
- Print Documents from CDROM command 2-8
- Print Documents from Floppy command 2-9
- Print Font List command 10-8
- Print Font Sample command 10-8
- Print Form List command 11-1
- Print Form Sample command 11-3
- print job data, copying 9-8
- Print Log command 9-13
- Print Options command 5-29
- Print PCLFont Sample command 10-9
- Print Sample Document command 8-7
- PRINTDEF command 4-6
- PRINTDEF program 4-2
- printer diagnostics 2-18
- printing
 - billing meter data 8-11
 - font list 10-8
 - font sample 10-8
 - form samples 11-3
 - options 5-11
 - PCL font sample 10-9
 - sample documents 8-5–8-7
 - showing status 8-2
 - stopping 3-3
- printing configuration reports 2-23
- printing documents from diskette 2-9
- printing files from CD ROM 2-8
- procedures
 - gfi directories, removing 13-3
- Profile parameters 6-3–6-6
- profiles 6-1–6-6
 - creating 6-2
 - setting 6-2
 - showing 6-2
- PSERVER
 - choosing 4-1–4-3
 - configuring system as 4-4
- publications xx
- R**
- rebooting
 - controller 3-6
- reinitializing software 2-26
- remote access 1-4
 - broadcast message 2-1
 - web based 1-5
- remote access, using 1-4
- remote device
 - enabling 2-29
- remote disabling Unix shell 2-32
- remote enabling Unix shell 2-31
- removing
 - gfi directories 13-3
 - orphan data files 12-6
- Reset Job IDs 2-12
- Reset Job IDs command 2-12
- Restart IPDS Parser command 3-6
- Restart Sequencer command 3-6
- Restart System command 3-6
- restarting
 - controller 3-6
 - IPDS parser 3-6
- Restore Default Imager Parameters command 5-32
- Restore Default PCL Imager Parameters command 5-35
- Restore Site Files command 2-10
- Restore Virtual Printers List command 2-11
- Restore Xerox Files command 2-11
- restoring
 - virtual printers list 2-11
- restoring backed-up site files 2-10
- restoring Xerox files 2-11
- RPRINTER
 - choosing 4-1–4-3
 - configuring system as 4-5
- S**
- safety
 - hotline numbers xi
 - laser ix
 - operation x–xiii
- sample documents, printing 8-5–8-7
- security option, lpr 12-5

- Security, MICR 14-2
- sequencer
 - restarting 3-5
- Set color calibrations 15-1, 15-6, 15-10, 15-11, 15-12
- Set Default Color Calibration command 15-11
- Set Default Media command 5-2
- set input profile command 6-2, 6-3
- Set Option command 5-11
- set output profile command 6-2
- Set Profiles command 6-2, 6-3
- Set Status Message command 2-12
- Set Time command 7-1
- Set Tray Purge/No Purge 5-8
- Set Tray <n> Tray <m> command 5-7
- Set Tray command 5-4, 5-5
- Set Tray Default command 5-5
- Set tray from virtual printer media 5-8
- setting
 - default media 5-7
 - feeder tray attributes 5-4
 - imager parameters 5-29
 - imager parameters, PCL 5-33
 - printer options 5-29
 - profiles 6-2
- setting stacker groups 5-10
- shortcuts, command 1-1
- Show Default Color Calibration command 15-12
- Show Default Media command 5-4
- Show Host ID 2-13
- Show Host ID command 2-13
- Show Imager Parameters command 5-30
- Show IPDS Tracing command 2-13
- Show License Status command 2-15, 2-17
- Show Log command 9-10
- Show PCL Imager Parameters command 5-33
- Show Profiles command 6-1
- Show Status command 8-2
- Show Time command 7-1
- shutting down the system 3-3
- Socket Printing, TCP/IP 2-28
- software
 - corruption problems 2-26
 - licensis 2-15
 - reinitializing 2-26
- software updates 2-7

- installing from CD-ROM 2-7
- installing from diskette 2-7
- spooling, checking available space 8-2
- Start command 3-5
- Start IPDS Tracing command 2-13
- starting
 - system 3-1
- status message
 - setting telnet 1-4
- status messages
 - setting 2-12
- Stop command 3-5
- Stop IPDS Tracing command 2-14
- Stop Queuing command 4-4
- stopping
 - system 3-1
- stopping and starting job processing 3-5
- stopping the system
 - using background menu 3-3
 - using Halt System command 3-3
- symbol sets, PCL 5-38
- system status, checking 8-1–8-8

T

- tape
 - copying documents to 2-4, 2-5
 - listing files on 2-5
- TCP/IP
 - Socket Printing 2-28
- telephone line, modem 2-30
- telnet
 - broadcast message, sending 1-4
 - greeting message 1-4
 - listing clients 1-4
 - logging on and off 1-4
 - messages 1-4
 - using 1-4
- Telnet greeting message 12-4
- terminating commands 1-2
- time, setting 7-1
- Trace command 2-13
- trace file
 - viewing 2-13
- tracing, IPDS 2-13
 - showing 2-13
 - starting 2-13
- tracing, IPDSstopping 2-14
- transferring software updates 2-7

U**UNIX**

- compressed bar format 2-3
- shell, using 12-2

Unix compressed bar format 2-3, 2-5, 2-6

Unix shell

- disabling remote 2-32
- disabling remotely 2-32
- enabling remotely 2-31

unresponsive printer 3-5

Unset Tray 5-9, 5-10

updates

- software 2-7

updates, software

- installing from CD-ROM 2-7
- installing from diskette 2-7

utility commands 2-1–2-13

V

VIPP cache capability 5-28

virtual printers 4-2, 4-6

- backing up list of 2-11
- restoring list of 2-11

W

web based access 1-5

wizard mode, using 12-1

X**Xerox files**

- restoring backed up 2-11

Xerox files, backing up 2-10
