

Triplex Plunger Pumps

Solid Shaft

Rails not included



Part	Pump	GPM	PSI	BHP	GHP	RPM	Shaft	Wt.
3890	XT8.14N	2.1	2000	3.0	4.5	1450	24mm	11 lb
3994	XWL42.15	11.0	2200	16.5	22.0	1450	24mm	34 lb
6658	RCA2.5G25N	2.5	2500	4.5	5.5	1750	24mm	10 lb
4596	XM11.17N	2.9	2500	5.5	8.5	1450	24mm	18 lb
6661	RCA3G25N	3.0	2500	5.0	6.5	1750	24mm	10 lb
6662	RCA3.5G25N	3.5	2500	6.0	8.0	1750	24mm	10 lb
4591	XMA35G25N	3.5	2500	5.5	8.5	1750	24mm	18 lb
5333	XW-M26.20	6.87	2900	14.0	18.0	1450	24mm	34 lb
3900	RKA4G30N	4.0	3000	7.5	10.0	1750	24mm	19 lb
6006	RG1525HN	3.96	3600	9.5	12.5	1450	24mm	31 lb
6007	RG2125HN	5.5	3600	13.2	17.0	1450	24mm	31 lb
6334	XWA-M8G35N	8.0	3500	19.0	25.0	1750	24mm	34 lb
3916	XW30.25	7.92	3600	19.0	25.0	1450	24mm	34 lb.
4592	XW-M21.28	5.5	4060	13.5	18.0	1450	24mm	34 lb
4597	RK15.28HN	4.0	4000	11.0	16.5	1450	24mm	19 lb
6242	RKA4G40HN 1" long shaft	4.0	4000	11.0	14.5	1750	24mm	19 lb
5922	RKA4G40HN-L 1-1/2" long shaft	4.0	4000	11.0	14.5	1750	24mm	19 lb
6180	RKA45G40	4.5	4000	11.0	14.5	1750	24mm	19 lb
1698	XWA-M5.5G40	5.5	4000	15.5	20.0	1750	24mm	34 lb
2505	XW-M15.30	4.0	4350	12.0	16.0	1450	24mm	34 lb
6606	SXWA4G50	4.0	5000	15.0	18.0	1750	24mm	35 lb
6610	SXWA5.5G50	5.5	5000	17.0	22.5	1750	24mm	35 lb
5999	SXW15.35	4.0	5100	15.0	18.0	1450	24mm	35 lb
6000	SXW21.35	5.5	5100	20.0	26.0	1450	24mm	35 lb

AR Ceramic Plungers

Part	AR No.	Kit
4078	Kit 1842	880291 plungers 18mm (3/kit)
3405	880291	18mm ceramic plungers (each)
4079	Kit 1843	880780 plungers 20mm (3/kit)
6305	Kit 2187	RSV Pump Pistons
6056	Kit 2513	Pistons SJ, XJV (3/kit)
5981	Kit 2542	1420430 20mm plunger (3/kit)
1274	1420430	20mm ceramic plungers (each)
6487	Kit 2543	1420120 22mm plunger (3/kit)
6485	1420120	22mm ceramic plunger (each)
6325	Kit 2544	Ceramic plungers (3/kit)
6127	Kit 2546	Ceramic plungers (3/kit)
2536	Kit 2547	20mm pistons RK/RKA
5414	Kit 2628	1260120 plungers (3/kit)
3389	1260120	Ceramic plungers (each)
5318	1780070	Ceramic plunger (each)
5308	Kit 2629	1260210 18mm plungers (3/kit)
3390	1260210	18mm ceramic plunger (each)
6488	Kit 2746	1780080 18mm plungers (3/kit)
6489	Kit 2548	1940120 18mm plungers (3/kit)
6484	1941020	18mm ceramic plungers (each)
6336	42475	Piston Kit RC, RCA, RCV

AR Water Seal/Packing Kits

Part	AR No.	Kit
3401	1857	18mm water seals
3382	2520	15mm water seals Replaces kit 1866
3383	1874	18mm water seals
3402	1887	20mm water seals
6619	1888	22mm water seals
1006	2167	SJV pump water seals
6306	2189	15mm water seals
3571	2235	12mm water seals
6098	2278	20mm water seals XW-M
3425	2624	15mm water seals
4459	2741	15mm water seals
6476	2747	18mm water seals
4128	2782	20mm water seals
6478	2783	22mm water seals
6057	2798	XJV water seals
5021	2815	15mm Hot water seals
6477	2874	18mm water seals
6337	42469	RC and RCA water seals
6347	42476	RCV water seals
6809	42556	RRV water seal kit

AR Pump Kits

AR Oil Seal Kits

Part	AR No.	Kit
3403	1855	Oil seals
4074	1856	Oil seals
3386	1860	Oil seals
3387	1872	Oil seals
6342	2188	Oil seals
3608	2236	Oil seals
1400	2591	Oil seals
6479	2781	Oil seals
6480	2786	Oil seals
6481	2787	Oil seals
6060	2797	Oil seals
6482	2873	Oil seals
6338	42474	RCA-E & RCV Oil seals
6409	42555	RRV series Oil Seals



AR Jetter Valves

Part	Item
5585	40235 for XT/XM pumps
5586	40161 for RK/XR pumps
5588	40236 for XW s pumps

AR Check Valve Kits

Part	AR No.	Kit
3398	1828	Check valves
3381	1864	Check valves
6063	2125	Check valves
6304	2186	Check valves
3493	2233	Check valves
6473	2780	Check valves
6474	2864	Check valves
6618	2869	Check valves
6475	2871	Check valves
6295	42123	RMV/RMW valves
6990	42762	Valves w/valve caps

AR Miscellaneous Parts

Part	AR No.	Kit
1715	2840250	Suction extension RMW
1735	2840260	Outlet extension RMW
6428	Kit 2280	Unloader Repair RSV
6653	Kit 42369	Unloader repair RSV 4000
6061	Kit 2858	Unloader repair XJV/SJV

AR Replacement Kit Chart

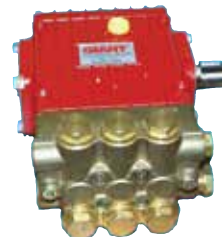
Pump Style	Check Valves	Water Seals	Oil Seals	Pistons	Unloader
RC, RCA-N	Kit 2186	Kit 42469	Kit 42468	Kit 42475	
RCA-E	Kit 2186	Kit 42469	Kit 42474	Kit 42475	
RCV	Kit 2186	Kit 42476	Kit 42474	Kit 42475	
RK 18mm 20mm 22mm	Kit 2864	Kit 1857 Kit 1887 Kit 1888	Kit 1855	Kit 2546/2757 Kit 2547 Kit 2759	
RKA 18mm 20mm 22mm	Kit 2864	Kit 1857 Kit 1887 Kit 1888	Kit 1856 E version Kit 1855 N version	Kit 2546 Kit 2547 Kit 2759	
RKV	Kit 1828	Kit 1857	Kit 1856	Kit 2546	
RMV G20/G23 RMV G25	Kit 2233 Kit 42123	Kit 2235 Kit 42122	Kit 2236	Kit 2234	42118
RMW 2.0/2.2 GPM RMW 2.5 GPM	Kit 2233 Kit 42123	Kit 42122 Kit 2235	Kit 2236	Kit 2234 Kit 42161	42118
RRV	Kit 1828	Kit 42556	Kit 42555	Kit 2544	
RSV 15mm	Kit 2186 (to 3200 PSI) Kit 42302 (above 3200)	Kit 2189	Kit 2188	Kit 2187	2280 42369
RW 18mm	Kit 42169	Kit 42171	Kit 42170	Kit 2872	
SJV	Kit 2869	Kit 2167	Kit 2797	Kit 2513	Kit 2858
SXMV 15mm	Kit 2125	Kit 2741	Kit 2787	Kit 2544	
SXW 18mm	Kit 2871	Kit 2874	Kit 2873	Kit 2548	
XM 15mm 18mm	Kit 1864	Kit 2741 Kit 2545	Kit 2786	Kit 2544 Kit 2747	
XMA 15mm 18mm	Kit 1864	Kit 2741 Kit 2747	Kit 2787 Hollow Kit 2786 Solid	Kit 2544 Kit 2545	
XMV 15mm	Kit 1864	Kit 2741	Kit 2787	Kit 2544	
XW 20mm 22mm	Kit 2780	Kit 2782 Kit 2783	Kit 2781	Kit 2542 Kit 2543	
XW-M 20mm	Kit 2780	Kit 2278	Kit 2781	Kit 2288	
XWA 20mm 22mm	Kit 2780	Kit 2782 Kit 2783	Kit 2781	Kit 2542 Kit 2783	
XWA-M	Kit 2780	Kit 2278	Kit 2781	Kit 2288	
XWL	Kit 2780	Kit 1853	Kit 2781	Kit 1849	

Triplex Plunger Pumps

Rails not included

Part	Pump	GPM	PSI	BHP	GHP	RPM	Shaft	Wt.
3166	P56W	6.1	1900	10.0	13.0	1420	24mm	18 lb
3158	P420A	13.0	2000	15.2	20.0	1450	28mm	36 lb
3148	P217RX	1.8 3.3	2000	5.9	7.7	1750 3450	24mm	11 lb
3155	P318R	5.5	2000	8.0	10.0	1450	24mm	
4992	P422R	10.0	2200	15.0	20.0	1450	28mm	36 lb
3149	P218	3.4	2500	5.9	7.7	1750	24mm	11 lb
3150	P219RX	4.2	2500	7.2	9.5	1750	24mm	11 lb
3153	P316RX	4.7	3000 2500	9.7	12.7	1450 1750	24mm	16 lb
4496	P316LX Short cover	3.9 4.7	3000 2500	9.7	12.7	1450 1750	24mm	16 lb
6277	P316L extended cover	4.7	2500	9.7	12.7	1450 1750	24mm	16 lb
3152	P321R	4.1	3200	9.0	11.8	3450	24mm	16 lb
3154	P317RX	3.7	3000	8.9	11.8	1800	24mm	16 lb

GIANT



GX Horizontal Pump

Horizontal pump with unloader includes siphon injector, thermal relief valve, and engine mounting accessories. Retro fit pump for Ex-Cell XR series pressure washers.

Part	Product	Shaft
6077	GXH2525A-112H	7/8" Horizontal



6077

Replacement Parts Chart

Pump	Packing Kit	Packing w/ weep Kit	Check Valve Kit	Plunger	Oil Seal Kit	Unloader Kit
P56W	09037	09061	09041	Kit 09539		
P205, P206, P207, P208, P210	09152		09116	06641	09144	
P217, P218, P219, P220, P221,	09164		09116	08455 pipe	09144	
P313, P314, P321 P316, P317, P319 P318, P320 P340	09152 09119 09145 09507		09116	08413 08455 pipe 08449 pipe 08455 pipe	09144	
P422R	09295		09143	06247 pipe	09641	
GX Series	09465		09466	06287	09468	09467
GXR Series	09465		09466	06287	09468	09534

Replacement Parts/Kits

Part	Giant	Description
4236	9037	Plunger Packing Kit
3163	9038	Plunger Packing Kit
2405	9061	Plunger Packing Weep
5957	9081	Plunger packing kit
3179	9089	Plunger packing weep
3507	9119	Plunger packing kit
5262	9138	Plunger packing kit
3172	9140	Plunger packing 25mm
3600	9141	Plunger packing 18mm
5990	9145	Plunger pack kit 20mm
3176	9152	Plunger packing kit
3508	9164	Plunger packing kit
5988	9167	Plunger seal kit
4485	9295	Plunger Packing Kit

Part	Giant	Description
5129	9039	Valve assembly
3169	9041	Valve assembly
3156	9112	Valve assembly
3529	9116	Valve assembly
2617	9122	Valve assembly
3164	9125	Valve assembly
3180	9143	Valve repair kit
3162	9154	Valve assembly kit
5994	9168	Valve assembly kit
5118	9466	Valve assembly kit
4490	9467	Unloader Kit GX
4493	9534	Regulator Kit GXR
3830	9144	Oil Seal Kit

Hypro Pumps

Hypro

Powerline Plus Plunger Pumps

Duplex Pumps

Rails included

Part	Pump	GPM	PSI	BHP	GHP	RPM	Shaft	Wt.
5070	2221B-P	2.1	1500	2.5	3.0	3450	3/4"	13 lb
5072	2231B-P	3.0	1500	3.0	4.0	3450	3/4"	13 lb
5069	2220B-P	2.1	2000	2.8	4.0	1725	3/4"	13 lb
5071	2230B-P	3.0	2000	4.0	5.0	1725	3/4"	13 lb

Triplex Pumps

Part	Pump	GPM	PSI	BHP	GHP	RPM	Shaft	Wt.
5451	2314B-P	4.0	1200	3.5	4.5	1450	3/4"	13 lb
5453	2414B-C3P	4.0	1800	5.0	6.5	800	1"	39 lb
5082	2413B-P	7.2	1800	9.0	11.5	1725	1"	39 lb
5083	2414B-P	8.0	1800	10.0	13.0	1725	1"	39 lb
5073	2330B-P	3.1	2500	5.5	7.0	1725	3/4"	13 lb
5077	2340B-P	4.2	2500	7.0	9.5	1725	3/4"	13 lb
5079	2410B-P	4.4	2500	7.5	10.0	1725	1"	39 lb
5078	2345B-P	4.8	2500	8.5	10.5	1725	3/4"	13 lb
5080	2411B-P	5.3	2500	9.0	12.0	1725	1"	39 lb
5081	2412B-P	5.9	2500	10.0	13.5	1725	1"	39 lb
5075	2359B-P	3.5	3000	7.0	9.5	1725	3/4"	13 lb
5466	2351B-P	4.0	3000	8.5	11.0	1725	3/4"	13 lb
5000	2430B-P	4.3	3600	10.5	14.0	1725	1"	39 lb

Hypro Replacement Kits

Part	Hypro Kit	Item	Qty
2483	3430-0319	Plunger Kit	3
2491	3430-0321	Plunger kit	3
5454	3430-0514	Plunger kit	3
5459	3430-0513	Plunger kit	3
5463	3430-0322	Plunger kit	3
3549	3430-0271	Plunger seal kit	1
5462	3430-0485	Plunger seal kit	1
5464	3430-0486	Plunger seal kit	1
3651	3430-0493	Plunger seal kit	1

Part	Hypro Kit	Item	Qty
5826	3430-0505	Plunger seal Kit	1
2494	3430-0316	Check valve kit	1
4245	3430-0506	Check valve kit	1
5332	3430-0491	Check valve kit	1
5962	3430-0492	Plunger Seal Kit	1
4509	9910-GS40GI	Control Assembly	
4500	9910-Kit1724	Repair Kit	

5300 Series Twin Piston Pumps

Please VERIFY solid or hollow shaft when ordering

Part	Pump	GPM	PSI	RPM	Shaft	Wt.
1568	5315C-HRX	1.5	500	1750	5/8" Hollow	10 lb
1567	5315C-RX	1.5	500	1750	5/8" Solid	10 lb
1223	5320C-HRX	2.0	500	1750	5/8" Hollow	10 lb
1493	5320C-RX	2.0	500	1750	5/8" Solid	10 lb
1574	5325C-HRX	2.5	500	1750	5/8" Hollow	10 lb
1576	5330C-HRX	3.0	500	1750	5/8" Hollow	10 lb
1575	5330C-RX	3.0	500	1750	5/8" Solid	10 lb
1572	5324C-H	2.9	800	1750	5/8" Hollow	10 lb
1570	5321C-H	2.2	1000	1750	5/8" Hollow	10 lb
1569	5321C	2.2	1000	1750	5/8" Solid	10 lb



5300 Series Replacement Parts

Part	Hypro Kit	Item
1580	3430-0010	Piston kit
1581	3430-0144	Piston kit (5321)
3573	3430-0191	Piston kit (5324)
1579	3430-0197	Check valves
2919	3430-0209	Sleeve assembly



5300 Injector Heads

Mounts directly on the pump, replacing the regular cylinder head. It feeds solution directly into the pump, mixing it with regular pump flow.

Part	Product
1577	3396-0006 for 5321 & 5324
1578	3396-0014 for other 5300 pumps

High Pressure Plunger Pumps

Electric Flange Hollow Shaft

Part	Pump	GPM	PSI	HP	RPM	Shaft	Seal	Valve	Wt.
5489	PND2.0/20-Z	2.0	2000	3.0	1750	5/8"	UD-07	UD-01	13 lb
5491	PNL2.0/20-Z	2.0	2000	3.0	3400	5/8"	UD-07	UD-01	13 lb
5490	PND3.0/20-Z	3.0	2000	4.0	1750	5/8"	UD-07	UD-01	13 lb
5492	PNL3.0/20-Z	3.0	2000	4.0	3400	5/8"	UD-07	UD-01	13 lb
5502	MD4.0/30-U	4.0	3000	8.0	1750	1-1/8"	UD-28	UD-02	26 lb
5503	MD5.0/30-U	5.0	3000	10.5	1750	1-1/8"	UD-28	UD-02	26 lb



Gas Flange Hollow Shaft

Part	Pump	GPM	PSI	GHP	RPM	Shaft	Seal	Valve	Wt.
5493	PNL3.0/20-T	3.0	2000	6.0	3400	3/4"	UD-07	UD-01	12 lb
5494	PNL3.0/25-T	3.0	2500	7.0	3400	3/4"	UD-07	UD-01	12 lb
5504	ML3.5/30-W	3.5	3000	9.5	3400	1"	UD-28	UD-02	25 lb
5505	ML4.0/30-W	4.0	3000	11.0	3400	1"	UD-28	UD-02	25 lb
5506	ML5.0/30-W	5.0	3000	13.5	3400	1"	UD-28	UD-02	25 lb



Solid Shaft

Rails not included

Part	Pump	GPM	PSI	BHP	GHP	RPM	Shaft	Seal	Valve	Wt.
5488	PND3.0/20-S	3.0	2200	4.5	6.0	1750	24mm	UD-08	UD-01	12 lb
5495	MC13/20-S	3.5	3000	7.0	9.5	1450	24mm	UD-28	UD-02	22 lb
5499	MC15/20-S	4.0	3000	8.0	11.0	1450	24mm	UD-28	UD-02	22 lb
5500	MD4.0/30-S	4.0	3000	8.0	11.0	1750	24mm	UD-28	UD-02	22 lb



Super Duty Pumps

1" Gas Flange Hollow Shaft

Part	Pump	GPM	PSI	GHP	RPM	Seal	Valve	Wt.
6504	MKL 4.0/35-W	4.0	3500	13.0	3400	UD-7	UD-30	27 lb
6505	MKL 4.0/40-W	4.0	4000	16.0	3400	UD-7	UD-30	27 lb
5507	MKL 5.0/35-W	5.0	3500	16.0	3400	UD-28	UD-30	24 lb

Gear Reduced Gas Flange Hollow Shaft

Shaft can be either 1" or 1-1/8", please specify
2.2:1 gear reduction

Part	Pump	GPM	PSI	GHP	RPM	Shaft	Seal	Valve	Wt.
6515	GKC38/17-GR	10.0	2500	20.0	1450	Specify	UD-12	UD-3	49 lb
6507	MKC18/24-GR	5.0	3500	16.0	1450	Specify	UD-09	UD-30	35 lb
6514	GKC26/24-GR	7.0	3500	20.0	1450	1"	UD-10	UD-31	49 lb
6665	GKC26/24-GR	7.0	3500	20.0	1450	1-1/8"	UD-10	UD-31	49 lb
6506	MKC 15/28-GR	4.0	4000	16.0	1450	Specify	UD-28	UD-30	35 lb
6513	GKC17/28-GR	4.5	4000	16.0	1450	Specify	UD-10	UD-31	49 lb



24mm Solid Shaft

Rails not included

Part	Pump	GPM	PSI	BHP	GHP	RPM	Seal kit	Valve kit	Wt.
6512	GKC 38/17-S	10.0	2500	17.0	22.0	1450	UD-12	UD-3	39 lb
5501	MKD 5.0/35-S	5.0	3500	12.5	16.0	1750	UD-28	UD-30	25 lb
6511	GKC 26/24-S	7.0	3500	17.0	22.0	1450	UD-10	UD-31	39 lb
6145	MKC 13/28-S	3.5	4000	10.0	15.0	1450	UD-28	UD-30	25 lb
5498	MKC 15/28-S	4.0	4000	10.0	15.0	1450	UD-28	UD-30	25 lb
6509	GKC 17/28-S	4.5	4000	12.5	16.0	1450	UD-10	UD-31	39 lb
6510	GKC 21/28-S	5.5	4000	15.0	20.0	1450	UD-10	UD-31	39 lb



Diaphragm Pumps



Replacement Parts

Part	Udor No.	Item
5514	UD-07	Seal kit
5515	UD-08	Seal kit
5516	UD-09	Seal Kit
5517	UD-10	Seal kit
5518	UD-11	Seal kit
5519	UD-12	Seal kit
5528	UD-28	Seal kit
5520	UD-13	Brass retainer kit "P"
5521	UD-14	Brass retain kit "P" 20mm
5523	UD-16	Brass retain kit "M" 20mm
5525	UD-18	Brass retain kit "G"
5526	UD-19	Brass retainer kit "G"
5529	UD-29	Brass retainer kit "M"
5508	UD-01	Valve kit
5509	UD-02	Valve kit
5510	UD-03	Valve Kit
5018	UD-30	Valve Kit
6516	UD-31	Valve Kit

Part	Udor No.	Item
5531	1205.35	15mm plunger (ea.)
5533	1205.30	18mm plunger (ea.)
5534	1205.31	20mm plunger (ea.)
5535	1205.32	22mm plunger (ea.)
5537	1205.33	25mm plunger (ea.)
5538	1205.34	28mm plunger (ea.)
5512	UD-O5	Plunger o-ring kit
5513	UD-06	Plunger bolt & oring kit
5532	1603.69	Oil sight glass M & P
5530	P-6058.26	Vent cap M, P, & G

Pump Rails

Part	Udor No.	Item
6518	8702.08	G Series Medium rail kit (1-3/4")
6519	8702.25	G Series Tall rail kit (2-1/2")
6517	8702.07	G Series Standard rail kit (7/8")
5272	8702.10	P series standard rail kit (7/8")



Diaphragm Pumps



- Self priming up to 8 feet
- Chemical resistant materials
- Can run dry without damage
- 3/8 FPT inlet/outlet
- Santoprene diaphragm
- EPDM Valve

Mount with wet end down to prevent damaging the motor in event of a seal leak.

Part	Pumps	GPM	PSI
3095	8000-443-236 12v	1.8	60
6751	8000-543-238 12v	1.8	100
3096	8005-233-236 115v	1.4	60
6203	8000-813-238 115v	1.6	100

Shur-Flo Accessories



Part	Model	Item
3131	94-385-32	Santoprene Diaphragm Kit
4149	94-380-02	115 volt pump head
3100	94-375-06	Santoprene switch 60 PSI
3044	94-422-908	Santoprene switch 100 PSI
3098	94-390-05	Viton valve kit
3097	94-390-06	EPDM valve kit
3099	94-395-06	Santoprene Diaphragm
3043	94-395-05	Viton diaphragm kit
3763	1/2" FPT	Wingnut x 3/8" barb
3101	1/2" FPT	Wingnut x 3/8" elbow barb
3465	8-145-00	3/8" mpt x 1/2" adapter

Everflo Diaphragm Pumps



- 12v DC
- 140°F. maximum
- Polypropylene pump housing and valve plate
- Viton® valves
- Santoprene® diaphragm
- Zinc-plated steel fasteners
- Honeywell Micro switch™
- Inline fuse protection
- CE approved



Everflo repair kit. Simply remove pump head with 6 screws.

Part	Pumps	GPM	PSI
4707	EF100	1.0	40
4708	EF2200	2.2	70
4709	EF3000	3.0	60
4710	EF4000	4.0	60
4713	EF5500	5.5	60
4719	EF7000	7.0	60
4685	EF2200 Kit		
4686	EF3000 Kit		
4689	EF4000 Kit		
4697	EF5500 Kit		
4699	EF7000 Kit		



Pump Oil



SAE 20W 50

Part	Product
4724	32 oz bottle

Pump Oil



Genuine Pump Oil

Series 100
30 weight non detergent.
Specifically formulated for use
in high pressure plunger pumps

Part	Product
4021	Case 6- 16 oz
5864	Case 24-16oz
4022	16 oz bottle



Beacon Pump Lube

API 10w30 non-detergent
ISO VG 68

Part	Product
5710	Case 12 32 oz
1753	32 oz bottle



6100 Original Pump Oil

Cat Pumps custom blend crankcase oil is
exclusively designed, tested and proven to
maximize the life of your Cat Pump. This special
formulated premium grade, petroleum based,
ISO 68 hydraulic oil contains the most advanced
additive to protect against wear, oxidation, rust
and corrosion

Part	Product
4019	Case 12-21 oz
4020	21 oz bottle
5711	5 gal. twin pak



Packing Extraction Kit

Comes with handy carrying case, and
includes a slide hammer, 13mm, 15mm,
18mm, 20mm, 22mm, and 24mm sockets.

Part	Product
4030	Extraction kit
4012	Slide hammer head
4029	13mm socket
3640	15mm socket
4084	16mm socket
4194	18mm socket
4041	20mm socket
5936	22mm socket
5378	24mm socket
1628	Carry Case
1189	Socket screw
3859	Slide pin



Note: complete
slide hammer order
parts 4012, 1189,
and 3859



Triplex Pump Oil

Specially formulated crankcase oil for
high pressure pumps. contains anti-wear,
rust inhibitors and deoxidizer additives.
Forms a barrier that prevents metal to
metal contact. Reduces friction and wear.
Change oil after 50 hours of use, then
every 500 hours.

Part	Item
6602	AR64516 Case 12-16 oz.
6603	16oz bottle



Synthetic Pump Oil

Specifically formulated for the XJ,
SJV, RM, and BK pump series. DO
NOT CHANGE OIL. Use oil only to
add if low.

Part	Item
2787	AR64545 Case 24-4.5oz
6601	4.5 oz. bottle



Packing Insertion Kit

Plastic insertion tools for reassembly of
packings. Kit includes 20mm, 22mm & 24mm

Part	Product
4341	Insertion kit



Maintenance Meter

For 1 or 2 cylinder gasoline engines. Use
to allow regular preventive maintenance.
Benefit with increased fuel economy,
less down time, and longer engine life.



3 FUNCTIONS:

- Hour Meter:** records actual running time of engine.
Non-erasable.
- Service Alert:** Warns when lube & oil change is needed in
25 hour intervals. Will flash for 2 hours while engine runs.
- Tachometer:** Displays RPM up to 9,000 RPM.

Part	Product
4188	Maintenance meter



Pump Oil

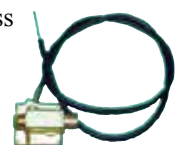
Specially formulated for use in all high
pressure industrial piston pumps. Uni-
versal transmission oil (UTTO). 30 wt.
non detergent and non-foaming. AW100
rated for superior oxidation protection.

Part	Item
6969	Case 12-32 oz
6970	32 oz. bottle



Engine Throttle Control

Save wear and tear on pump and
engine. Reduce engine speed in bypass
mode. Returns to full operating RPM
immediately when pump operation
resumes.



3/8" MPT inlet
36" cable

Part	Product	PSI
4723	Z Speed Throttle	3000
1660	Throttle Control	4000

Baldor Motors



Please pay attention to RPM, voltage ratings and shaft size. If you are not sure ask for assistance while ordering

Single Phase, Rigid Base, C-Face Open Drip Proof (ODP)

- Ball bearing design
- Manual thermal overload in conduit box
- UL & CSA recognized component approval
- 200°C. copper windings

Part	Baldor	Shaft	Frame	HP	RPM	Voltage	Amps	Wt.
2550	PCL1322M	5/8"	56C	2.0	1725	115/230	18/9	48
2552	CL1408TM	1-1/8"	184TC	3.0	1725	115/230	32/16	82
2554	PCL1327M	5/8"	56HCY	5.0	3450	230	23	58
3329	Special	3/4"	56C	5.0	3450	230	23	58
2555	CL1410TM	1-1/8"	184TC	5.0	1725	230/208	23/25	91

Single Phase, Rigid Base, C-Face Totally Enclosed, Fan Cooled (TEFC)

Part	Baldor	Shaft	Frame	HP	RPM	Voltage	Amps	Wt.
3122	PCL3514M	5/8"	56C	1.5	1725	115/230	12/6	53
3121	PCL3513M	5/8"	56C	1.5	3450	115/230	13/7	41
3123	PCL3515M	5/8"	56C	2.0	3450	115/230	18/9	46
3126	CL3619TM	1-1/8"	184TC	3.0	1725	230	13.2	84
3125	PCL3519M	5/8"	56C	3.0	3450	230/208	13/12.5	55
3128	CL3612TM	1-1/8"	184TC	5.0	1725	230	23	104
3127	CL3608TM	1-1/8"	184TC	5.0	3450	230	19.5	94

3 Phase TEFC Motors

Part	Baldor	Shaft	Frame	HP	RPM	Voltage	Amps	Wt.
2664	CEM3615T	1-1/8"	184TC	5.0	1750	208/230/460	13/7	81

Rigid Base for Belt Drive units

Part	Baldor	Shaft	Frame	HP	RPM	Voltage	Amps	Wt.
5251	EM3770T	1-3/8"	213T C	7.5	1760	230/460	25/12.5	176
5252	EM3774T	1-3/8"	215TC	10.0	1760	230/460	25/12.5	204

Motors Made ready (MMR)

Replacing an electric motor has been made easier with our motors made ready. Electrical cord is pre wired so all you have to do is pull off your old motor and slide on the new.

Motors pre-wired with switch, 36' cord and ground fault

Part	Baldor	Type	Shaft	Frame	HP	RPM	Voltage	Amps	Wt.
3173	PCL1313M	ODP	5/8"	56C	1.5	3450	115/230	13/7	38
2654	PCL1322M	ODP	5/8"	56C	2.0	1725	115/230	18/9	48
3201	PCL3514M	TEFC	5/8"	56C	1.5	1725	115/230	12/6	53
5270	PCL3513M	TEFC	5/8"	56C	1.5	3450	115/230	13/7	41
3584	PCL3515M	TEFC	5/8"	56C	2.0	3450	115/230	18/9	46

Motor pre-wired with cam switch and 10-3 20 foot cord only, no ground fault

Part	Baldor	Type	Shaft	Frame	HP	RPM	Voltage	Amps	Wt.
3332	Special	ODP	3/4"	56C	5.0	3450	230	23	58

- 2000 watts
- 3600 RPM
- Shaft diameter: 5/8"
- Motor starting cap: 1/2hp
- Receptacles 120v
- Volts @ 60hz: 120
- Rated AC amps: 16.7
- Weight: 59 lbs.

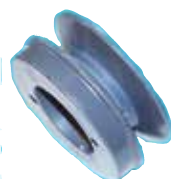


Part	Product
3935	2SFM2PC-1AC generator
2441	23607 AC brush (3 required)
2446	41171 capacitor (2 required)
2433	55223 bearing 6203-2RS
2448	64640-000 fan
2442	91452 rectifier

Pulley Sheaves

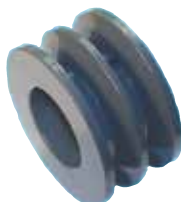
Single Groove

Part	Model	OD
3948	BK34H	3.55"
3949	BK40H	3.95"
3950	BK45H	4.25"
3951	BK47H	4.45"
3952	BK52H	4.95"
3953	BK55H	5.25"
3956	BK70H	6.75"
3957	BK80H	7.75"



Double Groove

Part	Model	OD
3959	2BK32H	3.35"
3961	2BK36H	3.75"
3808	2BK40H	3.95"
3962	2BK45H	4.25"
3963	2BK47H	4.45"
3964	2BK50H	4.75"
3965	2BK52H	4.95"
3970	2BK70H	6.75"
3971	2BK80H	7.75"
3828	2BK90H	8.75"

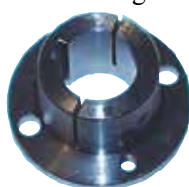


Double

H-Bushings

Part	Size	Part	Size
3855	5/8"	3976	20mm
3812	3/4"	4105	22mm
3813	7/8"	3811	24mm
3810	1"	3815	25mm
3814	1-1/8"	3977	28mm
3972	1-3/8"	3978	30mm
4739	1-7/16"	3816	32mm
		3817	35mm

Bushing



Generator & GFCI

Pulley Chart

Recommended pulley sizes for gasoline engines and electric motors. Your machine specifications may differ from these.

3400-3450RPM engine/motor

RPM	3400	1750	1450
Pump	4.25	7.75	7.75
			8.75
Motor	4.25	3.95	3.35
			3.75

1725 RPM electric motors

RPM	1750	1450	1125	1100	1050	950	750
Pump	4.75	6.75	7.75	6.75	7.75	7.75	7.75
	6.75	4.95	6.75	7.75		6.75	8.75
Motor	4.95	5.75	4.95	4.25	4.75	4.25	3.35
	6.75	4.25	4.45	4.95		3.75	3.75

Ground Faults (GFCI)

User Attachable Right Angle

- NEMA5-15P
- Accepts cord SJT to 12 AWG
- Outdoor rated
- UL & CSA approved

Part	Product
2291	120v/15amp
3593	125v/20amp



2291

Shock Shield User Attachable

- No switches or wires to change automatically senses input voltage
- UL & CSA approved
- 2 tubes of sealant included

Part	Product
2293	115/240v 15/20a
6681	120v 20a



Heavy Duty In-Line Cord

- Outdoor rated
- UL & CSA approved
- NO PLUG ON 220 volt cords**
- 3 HP motor maximum



Part	Product
5549	110v/15amp 36' cord
5550	110v/20amp 36' cord
3689	220v/30amp 25' cord

Gauges

Pressure Gauges



- 2-1/2" face
- 1/4" MPT stem
- 140°F. maximum
- Glycerine filled

Part	PSI	Type
2426	0-3000	Stainless steel
2427	0-5000	Stainless steel
2468	0-5000	Back mount
5449	Back	Mount bracket
6197	0-10000	Stainless steel



2468

Vacuum Gauge



- 2-1/2" Face plate
- 30 Hg graduation
- 1/4" stem

Part
4744

Fuel Pressure



- 0-300 PSI
- 2" face plate
- 1/4" mpt brass stem

Part
2423

Temperature



- 50° to 400° F.
- 3000 PSI
- 2" face plate
- 1/4" MPT
- Stem 2-1/2"

Part
2428

Temperature Test



400°F. maximum

Part
6620

Pressure Test



5000 PSI Quick connected pressure gauge for quick testing of pumps during repair and installation of new equipment. **Steel quick connect plug, NOT BRASS.**

Part
5744

Pressure/Temp Test



Test pump pressure up to 3000 PSI, and water temperature to 176°F. 3/8" quick connects for easy testing.

Part
3509

Fuel Pressure Test



Fuel pump pressure testing is simple with this adapted gauge. Test from up to 300 PSI.

Part
2422

Inline Fuel Filters



Part	Product
3056	1/4" metal filter
3057	5/16" metal filter
1559	5/16" plastic filter

Engine Filters for Briggs

Oil Filter

3" high



Part	Product
1511	Replacement for Briggs
1021	491506 Original Briggs Filter



1503

Round Air Cleaners

4.25" dia x 3.75" high
For 7 to 16 HP horizontal engine



1504

Part	Briggs No.
1503	393957 air cleaner
1504	271794 precleaner



1508

7.25" dia x 2.25" high
For (L Head), horizontal, vertical, twin, v-twin, & OHV Vanguard

Part	Briggs No.
1508	394018 air cleaner
1509	272490 pre cleaner

Replacement Air Filters Honda Engines



4055



3781



3782

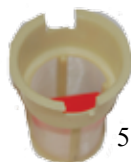
Part	Product
3781	GX160-200
3782	GX340-390
4055	GX240-270

Air Cleaner Assembly

5680



Part	Product
5895	GC Series
5678	GX340-390
5679	GX240-270
5680	GX340-390
2858	Wing Nut GX 160-390



5592

GX Fuel Filter & Holder

Part
5592

All parts for Honda engines are after market and not original Honda parts

Fuel Tanks & Accessories

Tanks have cap, filter and joint



Part	Product
5589	Fuel tank GX160, GX200
5590	Fuel tank GX240, 270, 340, 390
5666	Fuel hose GX240-270-340-390
5667	Fuel tank joint GX series
5657	Fuel tank cap GX series (poly w/gasket)
5898	Gas Cap Chrome GX

Carburetors, Throttles, Springs



Part	Product
5760	Carburetor GX160
5761	Carburetor GX200
5768	Carburetor GX240
5777	Carburetor GX270
5787	Carburetor GX340
5791	Carburetor GX390
5576	Throttle control GX160-200
5580	Throttle control GX240-270
5582	Throttle control GX340-390
4177	Control springs GX160-200
4178	Control springs GX240-270
4179	Control springs GX340-390

Head Gasket

Part	Product
5792	GX160
5793	GX200
5794	GX240
5795	GX270
5798	GX340
5799	GX390



Gasket Kit

Includes crankcase, exhaust and 3 carb gaskets

Part	Product
5800	GX160
5801	GX200
5802	GX240
1037	GX270
5803	GX340
5805	GX390



Recoil Start Assembly

Part	Product
5690	GX160, GX200
5681	GX240, GX270
5682	GX340, GX390
5680	GX340-390
5577	Handle w/60" cord
5689	43112 Recoil Starter handle GX240-GX390



Electrical Components

Part	Product
5097	Electric start GX340-390 No solenoid
5695	On-off switch
3827	Ignition coil GX160-200
5692	Ignition coil GX240-270
5693	Ignition coil GX340-390
5809	Spark plug cap GX
3001	Torch F6RTC plug GX160-390
2930	NGK BPR6ES plug (original) GX190-390



Oil Accessories

Part	Product
1916	Oil plug GX160-200
2473	Oil plug GX240-390
2599	Dipstick GX160-200
2805	Dipstick GX240-390

Muffler Accessories



Part	Product
5736	Muffler w/elbow GX160-200
5740	Muffler GX240-270
5741	Muffler GX340-390
5749	Exhaust pipe GX240-270-340-390
5896	Gasket set GX160, GX200
5807	Gasket set GX240-270-340-390
5364	Exhaust deflector GX160-200
2527	Exhaust deflector kit GX240-390

Fan cover Shroud

Part	Product
5472	GX160
5574	GX 240-270
5583	GX200
5584	GX340-390



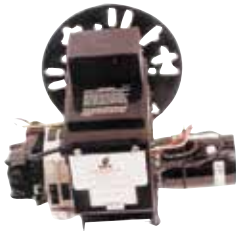
Connecting Rods

Part	Product
5754	GX160
5755	GX240-270
5756	GX340-390



Burner Parts

Wayne 12volt Burner Assembly



Features:

- 12v solid state constant duty ignitor
- 12VDC, permanent magnet motor
- Flamelock results in improved efficiency and lower emissions
- Low nozzle temperatures
- Controlled flame pattern

- Firing capacity: 0.50 to 2.75 BPH
- Fuel pump: Compact 3450rpm, single stage
- Motor: 12VDC permanent magnet, 4500 rpm
- Ignition: 20,000v/28MA/50VA secondary

Part	Product
4137	MSR-DC

Wayne EHASR Burner Assembly



- Lower emissions
- Quiet stops and starts
- UL listed
- Firing cap: 0.75 to 3.00 BPH
- Fuel pump: 3450 RPM
- Motor: 3450 rpm
- Ignition: 10,000v/23MA

Fuel nozzle & solenoid sold separately

Part	Product	Volts	Fan
3603	239-001 EHASR	115	6-1/4"
3604	239-005 EHASR	230	6-1/4"

Wayne Burner Parts



Part	Product
4136	31762-005 Fuel gun assembly
1430	3142-001 Wayne E Housing 6.25"
1435	31156 Burner tune up kit (E&M)
1429	13286 Electrodes (2/pack)
1425	20288 Blower 3.44" x 5 1/4" Model E
1426	21854 Blower 6 1/4" x 4" Model E
2920	21427 Blower 12v 4 1/4" x 3 1/2" 1/2" shaft
5591	10137 Blower 12v 4.5"x2.44" 5/16" shaft
1431	12484 Large standard gasket
1428	13279 Coupling, Model "E"
2604	14451 6" oil line assembly
2605	8" oil line assembly
1427	12945 SER buss bar, G-shape



GeniSys 12v advanced burner control is a 12Vdc primary safety control for oil burners used in special applications such as water heaters, pressure washers, crack sealers, and portable heaters having firing rates less than 5.5 GPH.

- Used with a suitable cad cell flame sensor to control the oil burner motor, ignitor, and optional solenoid valve.
- Has 12 volt enable input compatible with mechanical and high limit switches.
- Can provide interrupted or intermittent duty ignition, and it has a 15 second lockout time on flame failure

Contractor Tool



- With sturdy shock absorbing design made for the contractor's tool box
- Enables contractor to access the advanced features of the GeniSys control. Communicates current and previous 15 cycles of history for ease of diagnostics

Part	Product
6639	GeniSys 7556 12v System
6640	52082 Contractor Tool



Burner Parts



Part	Product
2952	5780 Electrode assembly tubes under 9" AF/AFG/SF/SM
2453	5782 Electrode Assembly tube over 9" AF/AFG/SF/SM
4541	7006U Cad cell flame detector
3302	7135U cad cell with 54" leads
2951	2288U Blower wheel "S" 5 3/4 x 3-7/16"
2949	2383U Blower wheel "S" 6 1/4 x 3-7/16"
6803	2999AU Blower wh 12V 4 1/4 x 2-7/16"
2607	2290 Coupling 7/16" shaft S series
2606	2454 Coupling 5/16" shaft A series
2614	3616 Gasket, Universal
2604	5636 6.5" connect tube assembly (A, AF)
2605	5394 8" connect tube assembly (S, SF, SM)

Ignitors

Burner Motors



12v Motor

- More robust 1/2" motor shaft now standard
- Improved strain relief and seal
- Improved cord set replaces 2 wire leads
- Improved engagement to burner housing
- Standardized couplings & blower wheels reduce inventory
- Compatible with Wayne 12v burner



Part	Product
5173	52145U Beckett 12v ADC comes with 2999 blower wheel and 2140501 coupling

Wayne 12v Motor

- 1/6 HP
- 3950 RPM



Part	Product
3065	101126-002 12v

Motors

- 3450 RPM
- ccw rotation
- Thermally protected
- M frame 6 3/4" bolt to center
- N frame 7 1/4" bolt to center



Part	Product
2946	1/7 HP 120v 48M frame w/capacitor
2947	1/7HP 220v 48M frame non capacitor
1214	1/5 HP 115v 48N frame non capacitor
4095	1/4HP 115/230v w/capacitor
1432	1/4 HP 220v 48N frame non capacitor



Reliable transformer testing! Lightweight, compact, instant results!

A fast, portable, dependable way to instantly test transformers and electronic ignitors!
Easy to use and makes service calls a breeze. Simply touch the high voltage spheres to the high contacts of any brand transformer or ignitor and the green LED lights up if the unit is good.



Part	Product
6748	Chek-Mate

Electronic Ignitors

Omni Ignitor™

Have the proper ignitor in stock at all times!

The omni ignitor will replace most ignitors on the market today. By using the Omni with it's universal mounting plate, remove the defective ignitor and attach to the ignitor's plate.

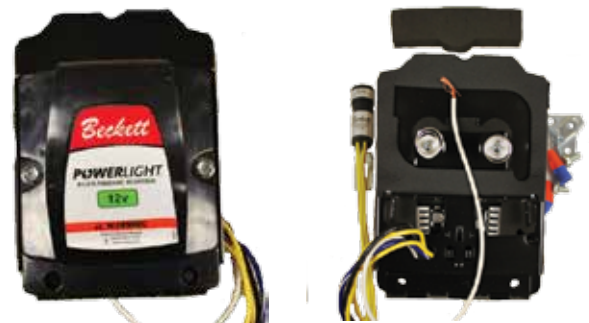


Omni mounts to mounting bases manufactured by Beckett, Wayne, Carlin, France.

Part	Product
6745	12vdc Omni Ignitor
6746	120v Omni Ignitor
6747	240v Omni Ignitor
6759	2604 Base Plate Beckett "A", "AF"
6758	2601 Base Plate Beckett "S" end mount
6760	2603 Base Plate Wayne "E" side mount
6761	2602 Base Plate Wayne "M" & "MH"

PowerLight 12vdc Ignitors

Beckett's new Powerlight igniters offers improved performance and longer life. Easy to install and is designed as a universal replacement in Beckett and other manufacturer's burners.



Features and Benefits:

- External heat sink eliminated for improved performance and reduced frequency of replacement due to overheating and arcing.
- Easy change to interrupted ignition to increase ignitor life and save energy.
- Lightweight, single piece design is compatible with Beckett and other burners to reduce required inventory
- Fully potted with improved epoxy to withstand thermal shock and protect electronic components: waterproof
- Simplified wiring requirements and fewer wires for ease of installation
- Cad cell not installed

Part	Burner Model
6948	5218309U Ignitor only
6946	5218301U Beckett A, AF w/Cad Cell
6947	5218303U Beckett S w/cad cell
6949	5218305U Wayne EHR w/cad cell
6950	5218307U Wayne MSR w/cad cell

Ignitors

Fuel Pumps

120v Electronic Ignitors

- Beckett ignitors are ALL end mount
- Base length of A, AF ignitors 5 3/4"
- Base length of S ignitors 7 1/2"
- Wayne "E" ignitors are side mount
- Wayne "M" ignitors are end mount



Part	Burner Model
5054	51838U ignitor only
4887	51771U Beckett A, AF w/base
4538	51824U Beckett S w/base
4545	51827U Wayne E w/base
5111	51825U Wayne M w/base
4471	Terminal kit

240v Electronic Ignitors

Part	Burner Model
6416	5199701U Beckett A w/base
6411	5199702U Beckett S w/base
6414	5199708U Wayne E w/base
6415	5199707U Wayne M w/base

Transformers

Known as "iron core" transformer, it draws 120 vac into the primary coil. The steel plates of the transformer core transfer the primary coil's 60Hz magnetic field to the secondary coil.

The secondary coil uses this field to produce a high output voltage of 10,000 VRMS open circuit (when there is no secondary current flowing) that has a frequency of 60Hz.



Part	Allanson	Burner Model
6258	2721-6286	120v Beckett A, AF End
6204	2721-605	120v Beckett "S" End
6229	2744-628G	240v Beckett A, AF End
6222	2744-605	240v Beckett "S" End
6205	2721-619	120v Wayne M&HS end
6206	2721-620	120v Wayne "E" side
6211	2744-620	240v Wayne "E" side

A2EA-6520 Clean Cut Fuel Pumps

PRODUCT FEATURES:

- Reduces truck inventory
- Built-in solenoid valve, bypasses flow of oil instantly when power is cut, resulting in cleaner shutdowns
- Reduced motor load, Clean cut allows oil to freely bypass the piston, reduces demands on motor at startup.
- Higher capacity, unique design delivers up to 4 GPH at 150 PSI
- Includes fuel line



Part	Model
6588	12 volt pump
6591	120 volt pump
6564	240 volt pump
1523	12/24v replacement coil
1524	115v replacement coil
1525	220v replacement coil
4742	21877U solenoid valve kit
1526	3753895 Pigtail connector

PD Timer (option)

Adds a brief, highly consistent "valve-on" delay to establish airflow and brings the pump up to speed for smoother light-offs. May be useful on some auto start pressure washers. 120 volts



Part
6582



Fuel Pumps

Single stage fuel pumps. Suitable for kerosene, No. 1 or No. 2 fuel oil.



Part	Model	GPH	RPM
1437	A2VA-7116	3	3450
5797	A2VD-7119	3	3450
1439	A2YA-7916	7	3450
1742	A1YA-7912	7	1725



Waste Oil Heater Pump

Part	Model
6778	A2RA-7710

A2VA-3006 w/Built-in Solenoid



Part	Solenoid
6275	12vdc/24vac
6207	115volt
6326	220volt



Suntec Solenoid Valves

Part	Model
2203	12/24v R261NL
1215	115v R642NL
2202	220v R753NL

Solenoid Replacement Parts

Part	Model
1523	3713823 12/24v coil
1524	3713824 115v coil
1525	3713825 220v coil
1526	3753895 pigtail



Gas Valves

White Rogers 36c Valves

Combination gas valve. Covers a wide range of applications. Designed for use with common ignition systems and standing pilots. It replaces hundreds of existing models in the field.

FEATURES:

- Standing pilot
- Single stage
- Fast opening
- Max. capacity @ 1" PD = 280,000 BTU/HR
- Convertible-natural or LP
- Adjustable regulator
- Inlet/outlet screens
- Line Interrupter
- Inlet/outlet pressure taps
- CSA approved

SPECIFICATIONS:

Operating ambient temperature -40° to 175°F.
 Pressure rating (max.) 1/2 PSI (14.0" W.C.)
 Pilot Gas Connection 1/4" compression fitting
 Pressure Tap 1/8" NPT



5066



Part	Product
5066	24v 0.23A W/R 36C03-433
5047	Millivolt W/R 36C03U-400

White Rogers 36H Valves

Universal replacement electronic ignition gas valve. This valve covers a wide range of applications. Designed for use with common ignition systems (HSI/DSI/Proven Pilot), it replaces hundreds of existing models in the field. White Rogers highest capacity combination gas valve.



FEATURES:

- HSI/DSI/Proven Pilot
- Single stage/Two stage
- Fast/Slow opening
- Convertible-natural or LP
- Adjustable regulator
- Inlet/outlet screens
- Electronic on-off switch
- Inlet/outlet pressure taps
- CSA approved

SPECIFICATIONS:

Electrical rating 0.41 amps (Single stage)
 0.54 amps (Two stage)
 Voltage 24VAC
 Frequency 50/60 Hz
 Operating ambient temperature -40° to 175°F.
 Pressure rating (max.) 1/2 PSI (14.0" W.C.)

Part	Product
4957	W/R 36H32-423

Honeywell Intermittent Pilot

Intermittent pilot, non integrated spark ignition module designed to generate sparks and energize the gas valves and monitor the flame sensor. It is a 100% shut off design that locks out the gas valve if the burner does not light within the safety time.

FEATURES:

- Replaces most spark intermittent pilot, non-integrated units
- Easy to install
- LED indicator for "power on" and system diagnostics
- Includes 10 different color coded program keys
- 12 volt



Part	Product
4956	S8610

Gas Thermocouple

Specifically designed for universal replacement

FEATURES:

- Stainless steel element construction for prolonged life
- Universal adapter fittings included for most types of pilot burners
- Visible instructions for easy installation

Part	Product
4955	W/R-HO6E-18"



Millivolt Generator

750 Millivolt power generator. Provides power for 750 Millivolt self-generation control systems. For replacement of similar screw-in type generators or for use with type E31-12 pilot burner

Part	Product
4863	36" W/R G0A1-502B1



Burner Rings

- Cast iron for long life
- High flow design
- Industry standard sizes
- 1/8" FPT



Note: Rings sold with 69 size orifice, the smallest size. Nozzles can be drilled to larger size

Part	Size
6674	32 nozzles 69 orifice
6675	44 nozzles 69 orifice
6676	66 nozzles 69 orifice
6678	Replacement Nozzle 69 orifice

Fuel Nozzles



Delavan Fuel Nozzles

TYPE A Hollow cone: Used mainly on burners with a hollow cone air pattern for throughputs up to 2.00 GPH. The droplet distribution is concentrated on the outside of the cone

Part	Size
1314	60A 1.00
1315	60A 1.20
1316	60A 1.35
1317	60A 1.50
1318	60A 1.75
1729	60A 2.00
1328	70A 1.00
1329	70A 1.50
1330	70A 1.75
1343	80A 1.00
3079	80A 1.10
1344	80A 1.25
1345	80A 1.35
1346	80A 1.50
1347	80A 1.65
1348	80A 1.75

Part	Size
1349	80A 2.00
1350	80A 2.25
1351	80A 2.50
1352	80A 2.75
1353	80A 3.00
1370	90A 1.00
1371	90A 1.25
1372	90A 1.35
1373	90A 1.50
1374	90A 1.65
1375	90A 1.75
1376	90A 2.00
1377	90A 2.25
1378	90A 2.50
1379	90A 3.00
1381	90A 4.00

TYPE B Solid Cone: Type B nozzles produce a spray that distributes droplets fairly uniformly throughout the complete pattern.

Part	Size
1321	60B 1.00
1322	60B 1.20
1323	60B 1.25
1324	60B 1.35
1325	60B 1.50
1326	60B 1.75
1327	60B 2.25
1466	60B 3.00
1331	70B 1.25
1334	70B 1.75
1335	70B 2.00
1336	70B 2.25
1337	70B 2.50
1338	70B 2.75
1339	70B 3.00
1354	80B 1.00
1355	80B 1.10
1356	80B 1.20
1357	80B 1.25
1358	80B 1.35
1359	80B 1.50
1360	80B 1.65

Part	Size
1361	80B 1.75
1362	80B 2.00
1363	80B 2.25
1364	80B 2.50
1365	80B 2.75
1366	80B 3.00
1367	80B 3.25
1368	80B 3.50
1369	80B 4.00
1382	90B 1.10
2384	90B 1.25
1384	90B 1.35
1385	90B 1.50
1386	92B 1.75
1387	90B 2.00
1383	90B 2.25
1388	90B 2.50
1389	90B 2.75
1390	90B 3.00
1391	90B 3.25
1392	90B 3.50

ProTek™ Nozzle System

Patented system provides significant reduced combustion pollutants for cleaner air. Includes a factory installed one piece valve component, preventing oil after drip from the nozzle in off cycle



Part	Product
4301	ProTek™



Fuel Nozzle Adapter

Part	Product
3720	1/8" FPT
3785	1/4" FPT

K-Lite™ RT Ceramic Fiber Insulation

Made from high quality spun ceramic fibers. Composed of long, high strength fibers needled into a tight blanket with superior handling properties. Superior thermal conductivity values. Completely inorganic.



- Recommended operating temp 2150°F
- Maximum use limit 2300°F
- Shipping Dimensions: 25"x 19"x 19"

Part	Product	Shipping Wt.
3093	4 lb. roll 1"x 24"x 25'	27 lbs.
4417	8 lb. roll 1"x 24"x 25'	36 lbs.

In-Line Fuel Filter



- 1/4" FPT I/O
- Maximum temp 50°C/122°F
- Filters diesel and gasoline
- 15 mesh filter

Part	Product
6452	Fuel Assembly
6453	Replacement cartridge

Mitco Can Type Filters



- With micro-flow filter element
- Galvanized can for rust protection
- Highest UL pressure rating
- Highest UL GPH rating
- 360° screw driver slot for fast removal
- 10 GPH flow rate

Part	Product
3069	264 Fuel assembly

Mitco Micro Oil Filter



- Designed for full range of nozzle gallonage
- Extremely efficient in filtering particles
- Non-shed design is fiber welded
- No bonding agents to clog filter

Part	Product
3071	264-48 micro element

Felt Fuel Oil Element



- Prevent clogged burner nozzles and reduce service problems
- High grade wool material
- Gasket included

Part	Product
3070	264-1A felt element

Switches



Fuel/Water Separator

Multi-stage protection water separator and fuel filtration in a compact size. Fuel flow is controlled so large contaminants are separated and fall into the collection bowl.

- 15 GPH maximum flow
- Filters gasoline and diesel fuel
- Dual 1/4" FPT ports

Part	Product
1483	Fuel filter assembly
1484	Element w/gasket
3133	Vent plug RK20179
3135	Clear bowl RK10166



KO Koil Kleen

Granular powder that works to dissolve lime and scale buildup on coils. Used as directed, it is safe for personnel and equipment. Contains a built-in inhibitor that offers protection to most metal surfaces.

- Biodegradable
- Safe on equipment
- Easy to use

Part	Product
4791	Case (4-8lb)
5101	8 lb container



Red Devil Soot Remover

Formulated to attack existing soot formations and prevent further buildup.

1 oz. to 10 gallons for treatment

Part	Product
2619	Case 12 pints
2618	Pint Red Devil



Pressure Switches

Can be wired normally open or closed

- 250v 15 amp
- 4050 PSI max
- Stainless steel plunger
- 195° F. max
- Activates at 580 PSI
- 1/4" terminals

Part	Product
1299	1/4" MPT PA switch
1412	3/8" MPT PA switch
5052	Micro switch 1/4" term



Pressure Switches

- 250v 15 amp
- 3650 PSI max.
- Stainless steel plunger
- 190° F. max.
- Activates at 435 PSI
- 3/16" terminals

Part	Product
5858	1/4" MPT AL680
5859	3/8" MPT AL681
3086	15amp micro switch



Pressure Switches

- Activates at 360 PSI
- 4100 PSI maximum
- 195° F. maximum
- 3/16" terminals
- 3 wires
- 250v 15 amp
- Stainless steel plunger

Part	Product
6249	1/4" 15a
6248	3/8" 15a
3086	Micro switch 15a

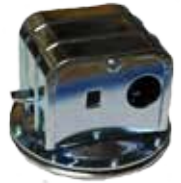


Vacuum Switches

Installed on the inlet side of the pump. When water is drawn into the pump, the diaphragm of the switch falls and the contacts in the switch close completing the circuit to the burner. When flow stops, the switch opens and shuts off burner

- 1/4" FPT inlet
- 140°F. maximum
- 220 volt
- 16 amp

Part	Product
1404	1.5"HG 3 GPH
1405	2.5"HG 3-4.5 GPH
3777	4.5"HG 4.5 GPH



Flow Switches w/Reed



Water activated switch to control the on and off of the burner. Suitable for pressure washers, carpet cleaning. Encapsulated in a plastic body and sealed from humidity and corrosive cleaning chemicals.

- 8 GPM maximum
- 47" long cord
- 2 wire reed switch
- 75 PSI minimum
- 1.0 GPM minimum
- 176°F. maximum

ST-5 Mount Vertically

Part	Product
1565	ST-5 3/8 FPT 4380 PSI



ST-5VH Mount any direction

Part	Product
6530	ST-5 3/8 FPT 5075 PSI max



ST-6 Mount any direction

Part	Product
1249	ST-6 4380 PSI max 3/8M



Reed Switch

Part	Product
6944	Brass reed switch (fits all)

Switches



Flow Switch



- 2 Wires
- 3/8" FPT I/O
- 4350 PSI max
- 8 GPM max
- 180°F max

Part	Product
6169	MV60 Vertical
6170	MV60 horizontal
6171	MV reed switch



Sure Fire Flow Switch

5000 PSI In-line



- Mount in any direction
- Activates with flows as low as 0.5 GPM
- Ideal for low amp applications
- Perfect for triggering a solenoid
- 12 GPM maximum
- 5000 PSI maximum
- 175°F maximum
- 3/8" FPT I/O

Part	Product
5579	100716



Flow Switch w/Pilot

Designed to operate in response to low volume, low pressure flow and still allow for a high pump output.

- Reed switch
- Activates with .75 GPM flow @ 18 PSI
- Mount vertically
- 18 GPM maximum
- 4000 PSI maximum
- 190°F maximum
- 96" foot lead wire
- 1/4" pilot barb

Part	GP	GPM	PSI
3022	100329 switch	16	5000
4196	100331 pilot valve		

Flow Switches No Reed

"TMT" Flow Switch



Tri-magnet technology in-line flow switch

- Micro switch tech eliminates reed switch
- Activates with 1.25 GPM flow @ 50 PSI
- Can be mounted in any position
- 12 GPM maximum
- 5000 PSI maximum
- 180°F maximum
- 48" 18awg lead
- 3/8" FPT in/out

Part	Product
5393	100975 5amps, 250vac, 30ohms

With Pilot Feature



- Micro switch tech eliminates reed switch
- Activates with .5 GPM flow @ 50 PSI
- Mount in vertical position
- 12 GPM maximum
- 4000 PSI maximum
- 180°F maximum
- Lead length: 48" 18awg
- Inlet/Outlet: 3/8" FPT
- Pilot: 1/4" hose barb

Part	GP
5193	100879 switch 5amps, 250vac, 30 ohms
5257	103073 pilot valve

Kraus Naimer Cam Switches

- 3 Position Off-Pump-Burner
- Single Stack Switches



Part	Voltage	Face Plate
2254	120v/30a	1.89" 1 hole
2256	240v/30a	1.89" 1 hole
2257	240v/30a	1.89" 4 screw
4633	240v/40a	2.52" 1 hole
2843	240v/40a	2.52" 4 screw



- 2 Position Off-On
- Single Stack switches

Part	Voltage	Face Plate
2258	120v/30a	1.89" 4 screw
2259	240v/30a	1.89" 4 screw

Salzer Cam Switches

These switches are ideally suited for many standard applications where industrial controls, instrumentation, and electric motors are involved.



- 3 Position Off-Pump-Burner
- 110 volt are single stack switch
- 220 volt are double stack switch

Part	Voltage	Face Plate
1307	110v/20a	1-7/8" 1 hole
1773	110v/30a	2-1/2" 4 screw
1308	220v/20a	1-7/8" 1 hole
1774	220v/30a	2-1/2" 4 screw



- 2 Position Off-On
- Double Stack switch

Part	Voltage	Face Plate
4353	220v/30a	2.5" 4 screw

CSII Cam Switches

- 3 Position Off-Pump-Burner
- 110v Single stack 22v double stack



6029

Part	Voltage	Face Plate
6029	110v/20a	1-7/8" 1 hole
6030	110v/30a	2-1/2" 4 screw
6032	220v/20a	1-7/8" 1 hole
6047	220v/30a	2-1/2" 4 screw



Thermal Relief Valve

Protects the pump from damaging heat build-up while in the bypass mode. Sensing a rise in temperature, the valve opens and discharges a small amount of heated fluid. This allows cooler water to enter the system and cool the pump. When gun is discharged, the cooler water will cause thermal relief valve to close immediately

- Quickest response to rising temperature
- 100 PSI



Part	GP No.	Inlet	Temp
3596	100556	1/4"mpt	145°F
3597	100557	3/8"mpt	145°F
5919	100679	3/8"mpt	190°F
3598	100558	1/2"mpt	145°F
5920	100680	1/2"mpt	190°F

Valves



Thermal Relief Valve

Part	Inlet	Temp
6534	1/4"mpt	150°F
6535	3/8"mpt	150°F
6536	1/2"mpt	150°F



Thermal Relief Valve

- Automatic reset

Part	Inlet	Temp
4963	3/8"mpt	140°F



Rupture Disk

Protects coil from over heating.
225°F. maximum



Part	Description
6987	1/2mpt inlet x 3/8 mpt outlet



Safety Relief Valves

- 1,000 to 6,000 PSI adjustable
- 195° F. max.
- 6 GPM maximum
- One model fits all pressures no springs to change
- Highly accurate over full range of pressures
- Fits any brand pump
- Made in USA
- Side or end discharge

Part	GP No.	Inlet
5413	100728	1/4"mpt
5871	100534	3/8"mpt
2177	100729	1/2"mpt
2867	100724 w/barb	1/4"mpt
3301	100723 w/barb	3/8"mpt
2185	100722 w/barb	1/2"mpt



Pressure Relief Valves

Protect pumps and other pressure components from over pressurization. After removing the dangerous high pressure from the system, they are able to be reset, but should be replaced as frequent use minimizes their effectiveness. They should be used whenever a pressure actuated unloader is used as these devices can eventually fail over time.

- Made in USA
- Adjustable
- 10 GPM maximum
- 150° F. maximum

Part	PSI	Inlet
2507	500-1200 (Silver)	1/4"mpt
2322	1200-2400 (Red)	3/8"mpt
1889	2400-3600 (Orange)	3/8"mpt
2323	3600-5000 (Blue)	3/8"mpt



Fluid Control Pressure Valves

- 10 GPM maximum
- 150° F. maximum



Part	Model	PSI	Inlet
3130	RV-500	1900-3500	3/8"mpt
3486	RV-500 w/ barb	1900-3500	3/8"mpt

Brass Check Valves

Incorporates and o-ring that is captured in a brass poppet to seal on a brass seat.
An economical general use design that provides a positive seal down to about 1/2 PSI back pressure.



Part	Size	PSI	Temp
3447	1/4" fpt	1200	180°F
3448	3/8" fpt	1200	180°F
3449	1/2" fpt	1200	180°F
2327	1/4" fpt	3000	200°F
2328	3/8" fpt	3000	200°F

Stainless Steel Check Valves

Part	Size	GPM	PSI	Temp
5593	1/4" fpt	6.5	6500	195°F
1991	3/8" fpt	10.5	6500	195°F



In-line Thermostats

- Positive in-line bimetal control
- 1/2" FPT I/O ports
- Universal 1/4" spade terminal connect
- 100 volt 25 amp

Part	Temp
1442	60° to 230°F
1443	60° to 340°F



Remote Thermostat

Remote probe thermostat is a capillary tube thermostat that relies on expansion of a viscous liquid to open and close switch.

- Panel mounted dual scale
- 60" insulated capillary tube
- UL/CSA approved
- 4000 PSI maximum

Part	GP No.	Temp
3942	100438	86° to 194°F
6712	100538	86° to 250°F
3943	100439	86° to 302°F



High Limit Switches

- Mounts in high pressure line senses overheating
- Responds by opening a n/c switch
- 110 volt 25 amp
- Can be used on 12 volt units

Part	Temp	Probe	Size
3914	176°F	Silver	3/8mpt
1444	230°F	Yellow	3/8mpt
4533	320°F	Red	3/8mpt
3915	176°F	Silver	1/2mpt
3665	203°F	Blue	1/2mpt
1440	230°F	Yellow	1/2mpt
1441	320°F	Red	1/2mpt



With 60" Wire Lead (2 wire)

Part	Temp	Probe	Size
3454	230°F	Yellow	3/8mpt
4216	230°F	Yellow	1/2mpt
5806	320°F	Red	1/2mpt



Valves

Accumulators

Easy Start Valves



Eases system start up. Especially useful with engine driven pressure washers

- 1/4" hose barb outlet
- 3/8" MPT inlet

Part	Mfg.	GPM	PSI
5621	MTM	7.0	4100
2394	PA	8.0	4500
5998	General	8.0	5000

Accumulators

Accumulators are designed to extend the life of your pressure washer pump by reducing the pulsations that arise in the incoming water supply. The nitrogen filled accumulators absorb the "shock" of low water pressure instead of your pumps pistons, valves and packing.

All accumulators are drop shipped from our vendors and ship via ground only

GIANT

Accumulator



- Precharged to 800 PSI
- 12 GPM maximum
- 2700 PSI maximum
- 1/2" MPT
- Rebuildable
- Stainless Steel casing

Hazmat charge applies

Part	Product
2407	Giant 22050A



Accumulator



- Zinc plated steel construction
- 10 GPM maximum
- 1300 PSI maximum
- Factory pre-charge 90-200 PSI air
- 3/4" FPT inlet
- Rebuildable

Vendor drop ship charge applies

Part
2406

High Pressure Accumulator

Non-Rechargeable



- 10 GPM maximum flow rate
- 60-3000 PSI operating pressure
- 1/2" FPT inlet
- Factory pre-charge 580 PSI nitrogen

Part
3104



ST-35R Strainer



- High volume suction strainer ideal for tank transfer or agricultural markets.
- Impact resistant plastic housing
- Stainless steel screen
- Brass weight to hold in place
- 1/2" and 3/4" hose barbs

Part	Product
2380	ST-35R

Hypro Suction Line

50 mesh nylon screen with male garden hose outlet



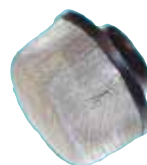
Part
4096

Chemical Strainers



Part	Product
6538	Heavy wt. brass w/check valve
3675	Brass w/check valve ss screen
6431	4' Clear vinyl hose w/det. filter
1059	5' Polybraid hose w/det. filter
1285	Black plastic with check valve
5558	Black plastic no check valve
6233	Gray plastic with check valve
6264	Gray plastic no check valve
3446	ZF2 plastic w/check valve w/ss screen

Tank Screens



Part	Product
2990	1/4" FPT 50 mesh
2496	3/8" FPT 50 mesh
2497	1/2" FPT 50 mesh
2498	3/4" FPT 50 mesh

Brass "Y" Strainer



Part	Product
1286	1/2" brass SS screen
1287	3/4" brass SS screen
5758	1" brass SS screen

Water Filters



SUTTNER

ST-8 Float Valves

Part	Size
1712	1/2" fpt 5GPM
1721	1/2" mpt adapter



Brass Float Valves

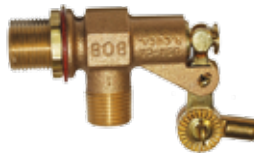
Part	Size
6994	1/2" mpt
6995	3/4" mpt
1571	Kit



Brass Float Valve

Includes bulkhead gasket and lock nut

Part	Size
6991	3/8" mpt
6992	1/2" mpt
6993	3/4" mpt



Brass Float Valve

Part	Size	GPM
2344	3/8" mpt	7.0



Plastic Float Valve



Part	Size	GPM
1019	3/4" mpt	8.0

Float & Valve Rods

Part	Size
5389	Poly float 5" long
1547	1/4"-20 x 2" rod
1548	1/4"-20 x 8" rod



Float Tank w/Lid

- 1 gallon capacity
- 5"W x 10.5"L x 8.5"H
- With baffle

Part	Product
1018	Plastic float tank



Blue Cap Water Filters



Part	Product
2828	FGH inlet x 1/2MPT outlet
2045	Blue replacement cap
3501	Screen, 60 mesh
1750	O-ring

Green Cap Water Filters

Low pressure in-line filter!

- 5.8 GPM maximum
- 145 PSI maximum
- 176° F. maximum



Part	Product
1731	ZMFIL 1/2FPT x 1/2MPT
4884	Green replacement cap
3501	Screen, 60 mesh
1750	O-ring

Blue Top Water Filters

- Pressure Washers
- Under sink residential water
- Vending equipment
- 145 PSI working pressure
- 508 PSI Burst pressure
- 122°F (50°C) max temp.

Filter Housings

Prepackaged with housing, mounting bracket and spanner wrench. Filters sold separately.

Part	Size
6235	5" x 1/2" FPT
6236	5" x 3/4" FPT
6237	5" x 1" FPT
6239	10" x 3/4" FPT
6247	10" x 1" FPT



Filter Cartridges

6255



6250



Part	Product
6250	5" Poly spun disposable (2 pack)
6251	10" Poly spun disposable 5 micron
6240	20" Poly spun disposable 1 micron
6221	20" Poly spun disposable 5 micron
6252	5" Washable nylon mesh 60 micron
6253	10" Washable nylon mesh 60 micron
6149	5" stainless steel 80 mesh
6255	10" stainless steel 80 mesh

Replacement Parts

Part	Product
6894	5" clear bowl w/o-ring (new style)
6269	10" clear bowl (old style)
6432	10" clear bowl w/o-ring
1951	96.3mm ID x 3.6mm white oring for new bowls
1934	90mm x 5.3 mm black O-ring for old style bowls
3557	#107 o-ring for vent
6921	Retainer ring (new style)
6219	Spanner wrench
6224	Mounting bracket

Scale Removal

Hypro Water Filters

- 150 PSI maximum @ 70°F
- 100 PSI maximum @ 125°F
- 140°F. maximum temp.

Clear Bowl



Part	Size	Screen
4450	½" FPT	50 mesh
4421	½" FPT	80 mesh
4451	¾" FPT	50 mesh
4422	¾" FPT	80 mesh
4455	1" FPT	50 mesh
4423	1" FPT	80 mesh
4475	1¼" FPT	50 mesh
4476	1¼" FPT	80 mesh
4477	1½" FPT	50 mesh
4478	1½" FPT	80 mesh

White Bowl



Part	Size	Screen
4452	½" FPT	50 mesh
4424	½" FPT	80 mesh
4453	¾" FPT	50 mesh
4425	¾" FPT	80 mesh
4454	1" FPT	50 mesh
4426	1" FPT	80 mesh
4431	1¼" FPT	50 mesh
4427	1¼" FPT	80 mesh
4432	1½" FPT	50 mesh
4428	1½" FPT	80 mesh

Replacement Parts



Part	Product
4435	½" NPT nylon top
4436	¾" NPT nylon top
4437	1" NPT nylon top
4438	1¼" NPT nylon top
4439	1½" NPT nylon top
4440	Gasket ½" & ¾"
4441	Gasket 1", 1¼", 1½"
4429	Clear bowl ½" & ¾"
4430	Clear bowl 1", 1¼", 1½"
4433	White bowl ½" & ¾"
4434	White bowl 1", 1¼", 1½"
4448	Screen 50 mesh ½" & ¾"
4444	Screen 80 mesh ½" & ¾"
4449	Screen 50 mesh 1"
4445	Screen 80 mesh 1"
4442	Screen 50 mesh 1¼"
4443	Screen 50 mesh 1½"
4446	Screen 80 mesh 1¼"
4447	Screen 80 mesh 1½"

Blue Top Calcium Removal

Remove calcium deposits from your water supply and extend the life of your pump, and your heating element on hot water pressure washers.



Part	Size
6236	5" x ¾" fpt
6237	5" x 1" fpt
6239	10" x ¾" fpt
6247	10" x 1" fpt

Cartridges (sold separately)

Part	Product
5385	5" Calcium Cartridge
5386	10" Calcium cartridge

SCALTROL®

Water Treatment



Controls scaling problems caused by the high content of minerals in most water supplies, including calcium carbonate (lime scale), calcium sulfate, iron and manganese.

Scaltrol scale control systems deposit a microscopic film of polyphosphate sequestrant to all surfaces using a patented venturi head. This enables a consistent, effective feed rate of the polyphosphate which dramatically reduces scale build up and downtime.

- Can be used for potable water
- Effective up to 885 ppm (50 grains) of hardness.

SC50 & SC-100 Performance:

Recommended for use in:

Food Service: dish machines, ice makers, steamers, combi-ovens, booster heaters, coffee makers

Commercial: pressure washers, water heaters, laundry machines, medical sterilizers, farms, hospitals, schools, club houses

Residential: whole house, water heaters, dishwashers, washing machines, showers/bathtubs, toilets

SC-50/SC-100 Specifications

Water flow.....up to 10 GPM
 Max. inlet pressure 55 PSI
 Maximum temperature head & sump.....120°
 Inlet/outlet.....¾"
 Dimensions.....SC-50... 4.5" wide and 7.5" tall
 SC-100...4.5" wide and 12.5" tall

cartridge is included with 5040 & 5041



Part	Product
5040	SC-50 (50,000 gal)
5041	SC-100 (100,000 gal)
5042	RSC-50 cartridge
5043	RSC-100 cartridge

Water Hardness Scale

Grains/Gallon	Parts/million (ppm)	Classification
less than 1.0	less than 17.1	Soft
1.0-3.5	17.1-60	Slightly Hard
3.5-7.0	60-120	Moderately hard
7.0-10.5	120-180	Hard
Over 10.5	Over 180	Very hard

Sprayers

Rechargeable Electric Sprayer

Ideal for applying cleaning chemicals!
Pull it or tow it!
Rolls easy in rough terrain!

- Rechargeable 12 volt battery
- 2 hour run time on single charge
- Front mounted nozzle with 50" swath
- Spot free gun with coiled hose
- 18" vertical and 20" horizontal spray
- Includes hitch bar for towing
- Adjustable handle for storage
- 12" wheels
- 9 gallon tank
- Glyphosate compatible
- 1 GPM pump



Part	Product
4735	9 Gal with cart

12 volt Sprayer

Ideal for applying cleaning chemicals!

- 9 Gallon spot sprayer
- 1.0 GPM Everflo Pump
- Standard adjustable 18" spray gun
- 10 foot coiled hose to spray gun
- Adjustable cone spray nozzle
- Chemical resistant polyethylene tank
- Includes attachment straps
- 12v connection cables included (Battery NOT included)
- Glyphosate compatible



Part	Product
4734	9 Gal 12volt

SOLO Pump up Sprayer

Innovative sprayer for home, farm and commercial use. Economical way to apply cleaning chemicals
MADE IN USA

Features:

- Chemical resistant seals and o-rings assure long life even when used with harsh chemicals.
- Tank, pump, and sprayer parts are made of high density polyethylene (HDPE). Tank UV resistant
- Large carrying/pump handle features ergonomic design for easier pumping and carrying
- 28" long gun & wand
- 4' flexible hose



Part	Product
5427	430-2G 2 gallon sprayer

Repair parts



5439



5437



5443



5433



5434



5436



5440

Part	Product
5439	Pump repair kit
5437	Shut-off valve repair kit
5443	Speed Tip Nozzle
5433	Replacement pump assembly
5434	Shut-off valve assembly
5436	Complete shut-off valve and wand

Loxeal Thread Locker

Anaerobic thread lockers lock studs, nuts screw and any threaded fasteners. The adhesive prevents loosening caused by vibration, mechanical and thermal shock Also inhibits fretting corrosion and prevents the seizure and galling

54-03 medium strength for thread locking of nuts and bolts of all types requiring to be dismantled

Part	Product
5003	10ml Blue
5004	50ml Blue
5486	250ml Blue

83-54 high strength for thread locking and sealing of studs, nuts, bolts and fasteners not requiring dismantling.

Part	Product
5006	10ml Permanent
5007	50ml Permanent
5008	250ml Permanent



Sprayers

Garden Hoses

Teflon Tape

1/2" x 520'



Part
1492

Gilmour Garden Hoses

Flexogen Gray Cover

*The best hose you'll ever buy!
Premium duty!*

- Maximum life up to 500 PSI
- Heavy duty, full flow metal couplings
- All-weather performance
- Ultimate flexibility and kink resistance
- Made from recycled material



Part	Product
4359	5/8" x 50'

Flexogen Hot Water Hose

- Patented Flexogen Technology
- Superior hose life up to 400 PSI
- Heavy duty, full flow brass couplings
- Hot water rated up to 200°F.
- Ultimate flexibility and kink resistance



Part	Product
4364	5/8" x 50'

Garden Hose Accessories



Part	Product
4365	Commercial Nozzle
4621	5/8" x 3/4" male coupler
4622	5/8" x 3/4" female coupler
4620	5/8" x 3/4" hose mender



Inlet King Nipples

For gravity feed systems

- Cadmium plated steel for high pressure performance
- Hex base to allow standard wrench usage
- Assemble directly to pump, no adaptors needed
- Barbs designed to prevent hose slippage & leaks



Part	Size
4003	1-1/4" hose barb x 1/2MPT
5049	1-1/2" hose barb x 3/4 MPT



Duraview Inlet Filters

- Strongest see through filter on the market
- Load bearing brass spine
- Integrated garden hose connector
- Flow through design
- Clear plastic cover
- Available with or without bypass ports
- For general purpose pressure wash use



- 8 GPM max
- 180°F. max
- 150 PSI max
- 15 PSI min



Part	Inlet	Outlet	Bypass
3798	3/4"FGH	3/8"MPT	(2) 1/4"
5181	3/4"FGH	3/8"MPT	None
3799	3/4"FGH	1/2"MPT	(2) 1/4"
5419	3/4"FGH	1/2"MPT	None
4057	Repair	kit	
6731	Clear	cover	

Swivel GH Pump Inlets

Part	Size
2154	3/4 FGH x 3/8 MPT hex
6429	3/4 FGH x 1/2 MPT hex



2031	3/4FGH x 1/2MPT spring
------	------------------------



2334	3/4 FGH x 3/8 FPT hex
2336	3/4 FGH x 1/2 FPT hex
6118	3/4 FGH x 1/2 FBSSP hex
2466	3/4 FGH x 3/4 FPT hex



Swivel w/1/4" Bypass Port & Filter

Part	Size
2400	3/4 FGH x 3/8 MPT
2176	3/4 FGH x 1/2 MPT



Garden Hose Brass "Y" Connector

Part	Size
2467	MGH x FGH x MGH



Back Flow Preventer

Part	Size
2511	3/4" FGH x 3/4" MGH



Stainless Steel Fittings

Garden Hose Couplings

MGH x MGH

Part	Size
5844	3/4 x 3/4



MGH x MPT

1290	3/4 x 3/8
2348	3/4 x 1/2
3510	3/4 x 3/4



MGH x FPT

5918	3/4 x 3/8
3511	3/4 x 1/2
3512	3/4 x 3/4



FGH x MPT

3252	3/4 x 1/2
3253	3/4 x 3/4



FGH x FPT

3250	3/4 x 1/2
3251	3/4 x 3/4



Garden Hose Menders

MGH x Barb

Part	Size
2270	3/4 x 5/8
2271	3/4 x 3/4

FGH x Barb

2272	3/4 x 5/8
2273	3/4 x 3/4



G H Quick Couplers

Part	Product
1738	FGH socket
1739	MGH plug
3725	Washer



Garden Hose Ball Valve

Part	Size
3457	FGH x MGH



Garden Hose Swivel

Part	Size
2274	FGH x FGH



Garden Hose Washers

Part	Product
1737	Washer
2720	Washer 50 pk
1736	Washer w/filter
2717	Wash/filt 25 pk

1737



Pressure Reducing Valve

Reduces inlet water pressure to 40 psi



Part	Size
6887	3/4 FGH x MGH

Stainless Steel Pipe Fittings

- 304 Stainless Steel
- 300 PSI WOG

Hose Barbs



Part	Size
5197	1/4" hose x 1/4 MPT
5198	3/8" hose x 3/8 MPT
5199	1/2" hose x 1/2 MPT
5767	3/4" hose x 3/4 MPT

Hex Bushings



Part	Size
5203	3/8 MPT x 1/4 FPT
5747	1/2 MPT x 1/4 FPT
5204	1/2 MPT x 3/8 FPT
5788	3/4 MPT x 1/4 FPT
5748	3/4 MPT x 3/8 FPT
5750	3/4 MPT x 1/2 FPT
5789	1" MPT x 1/2 FPT
5790	1" MPT x 3/4 FPT

Hex Head Plugs

Part	Size
5217	1/4 MPT
5218	3/8 MPT
5219	1/2 MPT
5769	3/4 MPT



Tees



FPT x FPT x FPT

Part	Size
5211	1/4" x 1/4" x 1/4"
5212	3/8" x 3/8" x 3/8"
5213	1/2" x 1/2" x 1/2"
5746	3/4" x 3/4" x 3/4"
5781	1" x 1" x 1"

Couplers



Part	Size
5214	1/4 FPT
5215	3/8 FPT
5216	1/2 FPT
5763	3/4 FPT
5764	1" FPT

Cross



Part	Size
5783	1/4 FPT
5784	3/8 FPT
5785	1/2 FPT

90° Elbow



Part	Size
5205	1/4FPT
5206	3/8FPT
5207	1/2FPT
5765	3/4FPT
5766	1"FPT

90° Street Elbow

Part	Size
5208	1/4 MPT
5209	3/8 MPT
5210	1/2 MPT
5779	3/4 MPT
5780	1" MPT



Hex Nipple

Part	Size
5200	1/4 MPT
5201	3/8 MPT
5202	1/2 MPT
5770	3/4 MPT
5782	1" MPT



Nipples

MPT x MPT

Part	Size
5221	1/4" x 1.5"
5771	1/4" x 2.5"
5223	3/8" x 1.5"
5772	3/8" x 2.5"
5225	1/2" x 1.5"
5773	1/2" x 2.5"
5774	3/4" x 1.5"
5775	3/4" x 2.5"
5778	1" x 2.5"



5220	1/4" x close
5222	3/8" x close
5224	1/2" x close
5745	3/4" x close
5776	1" x close



Steel Pipe Fittings

Steel Pipe Fittings 5000 PSI



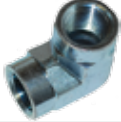
JIC Steel Elbow

- 90° Elbow
- Male JIC to MPT
- Tube 5/16"
- Pipe 3/8"

Part
4271

Steel Elbows

90 Degree FPT x FPT



Part	Size
3349	1/4"
2590	3/8"
3350	3/8"x1/4"
2591	1/2"
2592	1/2"x3/8"

90 Degree MPT x MPT



Part	Size
4336	3/8"x1/4"
4335	3/8"x3/8"
4334	1/2"x3/8"
4138	1/2"x1/2"

Street Elbows

90 Degree MPT x FPT



Part	Size
3355	1/4 x 1/4
3356	1/4 x 3/8
2593	3/8 x 3/8
3357	3/8 x 1/4
2594	3/8 x 1/2
2596	1/2 x 3/8
2595	1/2 x 1/2



4614	3/8 x 3/8 compact
------	-------------------

45 Degree FPT x MPT



Part	Size
3359	1/4 x 1/4
3360	3/8 x 3/8
3361	1/2 x 1/2
5274	3/4 x 3/4

45 Degree FPT x FPT

Part	Size
5031	1/4 x 1/4

JIC Steel Hex Nipple



Part	Size
4042	1/2-20 x 3/8 MPT

Steel Hex Nipples

Male Pipe Thread



Part	Size
2510	1/4"
2586	3/8"
2588	1/2"



Part	Size
2587	3/8" x 1/4"
3247	1/2" x 1/4"
2589	1/2" x 3/8"

Steel Hex Couplers

Female Pipe Thread



Part	Size
2509	1/8"
2581	1/4"
2582	3/8"
2584	1/2"
5012	1/4" x 1/8"
2583	3/8" x 1/4"
3234	1/2" x 1/4"
2585	1/2" x 3/8"

Steel Tee

Female Pipe Thread



Part	Size
3358	1/4"
2570	3/8"
2571	1/2"

Steel Branch Tee

FPT x FPT x MPT



Part	Size
3433	1/4"
2572	3/8"
2573	1/2"

Steel Street Tee

FPT x MPT x FPT



Part	Size
3434	1/4"
2568	3/8"
2569	1/2"

Steel Adapters



Part	Size
4521	1/4 FPT x 1/8 MPT
2579	3/8 FPT x 1/4 MPT
4088	3/8 FPT x 3/8 MPT
2580	1/2 FPT x 3/8 MPT

Steel Hex Plug

counter sunk hex



Part	Size
3351	1/4 MPT
2574	3/8 MPT
2575	1/2 MPT
2080	3/4 MPT

Steel Allen Head Plug

Male Pipe Thread



Part	Size
3352	1/4 MPT
3353	3/8 MPT
3354	1/2 MPT

Steel Hex Bushings



Part	Size
5842	1/8 FPT x 1/4 MPT
2576	1/4 FPT x 3/8 MPT
2577	1/4 FPT x 1/2 MPT
2578	3/8 FPT x 1/2 MPT
4375	1/2 FPT x 3/4 MPT

Steel Cross

Female Pipe Thread



Part	Size
3362	3/8"
3363	1/2"

Brass Pipe Fittings

Brass Pipe Fittings

90° Elbows

Female Pipe Thread

Part	Size
2068	1/4"
2069	3/8"
2070	1/2"
2071	3/4"



Reducing Elbows

Female Pipe Thread

Part	Size
2139	3/8" x 1/4"
2140	1/2" x 3/8"



Street Elbows

FPT x MPT

Part	Size
2101	1/4" 90°
2102	3/8" 90°
2103	1/2" 90°
2104	3/4" 90°



2352	1/4" 45°
2353	3/8" 45°
2354	1/2" 45°



Brass Adapters

FPT x MPT

Part	Size
2521	1/4 x 1/4 heavy
4039	3/8 x 3/8 heavy



2421	1/4 x 1/8
1722	1/4 x 1/4
2108	3/8 x 1/4
2109	1/2 x 1/4
2110	1/2 x 3/8
4773	1/2 x 1/2
2111	3/4 x 1/2



Allen Head Plug

Male Pipe Thread

Part	Size
2076	1/8"
2077	1/4"
2078	3/8"
2079	1/2"



Brass Cross

Female Pipe Thread

Part	Size
2133	1/4"
2134	3/8"
2135	1/2" bar stock



Brass Tee

Female Pipe Thread

Part	Size
2072	1/4"
2073	3/8"
2074	1/2"
2075	3/4"



Branch Tee

FPT x FPT x MPT

Part	Size
2268	3/8"
2269	1/2"



Street Tee

FPT x MPT x FPT

Part	Size
2116	1/4"
2117	3/8"
2118	1/2"
3921	3/4"



Brass Caps

Female Pipe Thread

Part	Size
2349	1/4"
2350	3/8"
2351	1/2"



Brass Locknuts

Female Pipe Thread

Part	Size
2264	1/4"
2265	3/8"
2266	1/2"
2267	3/4"



Hex Bushing

Part	MPT x FPT
2639	1/4 x 1/8
2082	1/2 x 1/4
2083	1/2 x 3/8
2084	3/4 x 3/8
2085	3/4 x 1/2
4573	1" x 3/4



Light Hex Bushing

2900	3/8 x 1/4
2085	3/4 x 1/2



Galvanized Coupler

Female Pipe Thread

Part	Size
2296	1/4"



Brass Long Nipples

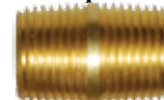
Male Pipe Thread



Part	Size
2090	1/8" x 1.5"
2091	1/8" x 2.5"
2418	1/8" x 6"
2092	1/4" x 1.5"
2093	1/4" x 2"
2094	1/4" x 2.5"
2095	3/8" x 1.5"
2096	3/8" x 2"
2097	3/8" x 2.5"
2098	1/2" x 1.5"
2099	1/2" x 2"
2100	1/2" x 2.5"

Close Nipples

Male Pipe Thread



Part	Size
2086	1/8"
2087	1/4"
2088	3/8"
2089	1/2"
3920	3/4"

Reducing Nipples

Male Pipe Thread



Part	Size
2170	1/4" x 1/8"
2171	3/8" x 1/8"
2112	3/8" x 1/4"
2113	1/2" x 1/4"
2114	1/2" x 3/8"
2115	3/4" x 1/2"

Brass Hex Nipples

Male Pipe Thread

Part	Size
2136	1/4"
2137	3/8"
2138	1/2"
3919	3/4"

Hex Couplers

Female Pipe Thread



Part	Size
2128	1/8"
2129	1/4"
2130	3/8"
2131	1/2"
2132	3/4"

Poly Pipe Fittings

Reducing Hex Couplers



Part	Size
2420	1/4 x 1/8
2105	3/8 x 1/4
2106	1/2 x 1/4
2107	1/2 x 3/8
3922	3/4 x 1/2

Hose Barbs

Barb x MPT



Part	Barb
2120	1/4 Barb x 1/8 MPT
1184	1/4 Barb x 1/4 MPT
1181	1/4 Barb x 3/8 MPT
1177	1/4 Barb x 1/2 MPT
1176	3/8 Barb x 1/4 MPT
1175	3/8 Barb x 3/8 MPT
1174	3/8 Barb x 1/2 MPT
1173	1/2 Barb x 1/4 MPT
1172	1/2 Barb x 3/8 MPT
1171	1/2 Barb x 1/2 MPT
4534	5/8 Barb x 3/8 MPT
2121	5/8 Barb x 1/2 MPT
4535	5/8 Barb x 3/4 MPT
2122	3/4 Barb x 1/2 MPT
2123	3/4 Barb x 3/4 MPT
4000	1" Barb x 3/4 MPT
4001	1" Barb x 1" MPT

Barb x FPT



Part	Size
2124	1/4 Barb x 1/4 FPT
3936	3/8 Barb x 1/4 FPT
2125	3/8 Barb x 3/8 FPT

Hose Barb Elbows



Part	Size
2119	1/4 Barb x 1/4 MPT
4871	1/4 Barb x 3/8 MPT
2126	3/8 Barb x 1/4 MPT
4784	3/8 Barb x 1/2 MPT
2127	3/8 Barb x 3/8 MPT
4795	1/2 Barb x 3/8 MPT
4796	1/2 Barb x 1/2 MPT
4854	5/8 Barb x 3/8 MPT
4866	5/8 Barb x 1/2 MPT
4881	3/4 Barb x 1/2 MPT
4883	3/4 Barb x 3/4 MPT

Brass Hose Splicers



Part	Size
1560	1/4"
1561	3/8"
1562	1/2"
2145	5/8"
2146	3/4"

Push On Splicers



Part	Size
3225	1/4"
3226	3/8"
3227	1/2"
3228	5/8"
3229	3/4"

Push-on Hose Barbs

Barb x FPT



Part	Barb	FPT
3230	1/4"	1/4"
3231	3/8"	3/8"

Barb x MPT



Part	Barb	MPT
3213	1/4"	1/8"
3214	1/4"	1/4"
3215	1/4"	3/8"
3216	3/8"	1/4"
3217	3/8"	3/8"
3218	3/8"	1/2"
3219	1/2"	1/4"
3220	1/2"	3/8"
3221	1/2"	1/2"
4495	1/2"	3/4"
3222	5/8"	1/2"
5474	5/8"	3/4"
3223	3/4"	1/2"
3224	3/4"	3/4"

Barb x MPT elbow



Part	Barb	MPT
5017	1/4"	1/4"
5023	3/8"	1/4"
5024	3/8"	3/8"
5025	1/2"	3/8"
5026	1/2"	1/2"

Swivel Barb x MPT



Part	Barb	MPT
4999	1/4"	1/4"
5001	3/8"	1/4"
5002	3/8"	3/8"
5015	1/2"	3/8"
5016	1/2"	1/2"

Polypropylene Fittings

Bulk Head Fittings

External thread and nut are left hand threads. Internal thread is FPT. For use with tanks having wall thickness 1/16" to 1/2".



Part	Size
4468	1/2"
4489	3/4"
4491	1"

Poly Elbow Barb

Applications requiring 90° connection of 2 hoses. fitting will reduce amount of hose required to make a 90° turn



Part	Barb	MPT
4522	3/8	3/8
4527	1/2	1/2
4531	5/8	3/4
4530	3/4	3/4

Poly Hose Barb



Part	Barb	MPT
4532	3/8"	3/8"
4536	1/2"	1/2"
4552	3/4"	5/8"
4547	3/4"	3/4"
4554	1"	1"

Poly Hose Mender

Applications requiring connection of 2 hoses. Commonly called a hose spice or shim fitting.



Part	Barb	MPT
4607	1/4"	1/4"
4608	3/8"	3/8"
4613	1/2"	1/2"
4623	5/8"	5/8"
4636	3/4"	3/4"

Poly Nipple Fitting

Connect 2 FPT fittings.



Part	Size
4587	1/4 MPT x 1/4 MPT
4593	3/8 MPT x 3/8 MPT
4594	1/2 MPT x 1/2 MPT
4601	3/4 MPT x 3/4 MPT
4606	1" MPT x 1" MPT

Wash Brushes

Yellow Wash Brushes

Yellow bristle brushes made of polystyrene, a soft flagged bristle excellent for washing trucks, cars or RVs. Polystyrene is a superior bristle that maintains it original shape longer

Part	Product
6276	10" 1 thread 1 taper hole with bumper guard
6280	14" 1 thread 1 taper hole
6284	18" 2 threaded holes
6286	24" 2 threaded holes



Green Wash Brushes

Green bristle brush is made of flagged Nyltex bristles and is our highest quality product. Excellent for high gloss paint jobs or high gloss gel coats. Special star shaped bristles aides the brush in maintaining soap and water during washing.

Part	Product
6629	10" green w/ guard
6627	18" green w/guard



Highly functional, industrial brush. Unique shape and 3 staff holes make it perfect for multiple applications

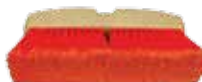
Part	Product
6294	10" Jumbo Tank



Acid Wash Brushes

Acid resistant bristles formulated for the toughest jobs

Part	Product
3305	10" Orange medium



Truck Stack Brush

Tampico bristle is a natural fiber made from YUCCA. For truck smoke stacks, fender wells and wheels. Extremely acid resistant. Not to be used on painted surfaces

Part	Product
6071	Medium Brush
6175	Large Brush



Salt & Pepper Brushes

Soft, flagged synthetic fill is an excellent multi-purpose wash brush. For use on windows, cars, vans, trucks, boats, and siding. Clear coat safe.

1 threaded hole

Part	Size
6256	10" w/bumper
6271	14" no bumper



Hi-Lo Truck Brush

Multi-surface, bi-level design makes cleaning easier. Ultra soft flagged for delicate areas. Chemical and high heat resistant.

Part	Product
6638	10" Green Nyltex
6287	10" Yellow Polystyrene



Rotating Brushes

- Natural hair bristles for painted surfaces
- Nylon medium brush fiberglass, wood, brick
- 700 PSI maximum
- 8 GPM flow rate
- 190° F. maximum
- 6-1/2" diameter

Part	Product
6190	Horse hair 1/4" mpt inlet
6189	Nylon 1/4" mpt inlet



Brush Handles

With acme threaded tips



Part	Product
2953	2 section 6-12' fiberglass metal threads
2853	Telescopic Handle 5'-9' w/threaded tip
6458	1 section 59" fiberglass metal threads
1252	Wood 15/16" x 60" plastic threads

Siphon Pump

- 7 GPM
- Fits 2" opening
- 15, 30 & 55 gal drums



Part	Product
4117	H.D. Gray suction tube

Part	Product
4833	5 gal popper



Part	Product
4583	55 gal wrench



Part	Product
4834	3/4 bung drum faucet



Hand Cleaners

Force with Pumice

Great for service vehicles!

Industrial waterless hand cleaner with fine pumice to cut grease, without drying hands. Blitz Pak two 2500ml bottles & dispenser

Part	Product
4943	2500ml bottle
4942	Case (4-2500ml)
5834	Blitz Pak



Unique formulated blend of soy oil, and antimicrobial agent, PCMX. 100% biodegradable.

Part	Product
4946	2500ml bottle
4945	Case (4-2500ml)
3178	Blitz Pak



Wash Brushes

Surface Cleaners



Surface Spinners

Maximize your pressure washers effectiveness!

Surface cleaners with Talon Swivel



- All metal chassis & aluminum deck
- Trigger gun built into handle
- 3/8" quick coupler nipple for hose hookup
- Large 10" pneumatic rear tires
- Large 3" front caster
- Stainless steel spray arm assembly
- 2 nozzle spray arm assembly
- 1/4 meg 15025 nozzles standard
- 1500 PSI Minimum pressure
- 4000 PSI Maximum pressure
- 2000 RPM maximum
- Minimum flow 3 GPM
- Maximum Flow 6 GPM
- MADE IN USA

Part	Product
6147	24" spinner
6144	30 Spinner

Surface cleaners with Deublin Swivel

Optional gun and lance can be detached to clean corners
Inset wheels to allow cleaning of edges
Front mounted swivel caster allows easy handling & turning
Two 1/4 meg 15 degree nozzles standard
Three nozzle spinner available



- Maximum Pressure: 4000 PSI
- Minimum Pressure: 1500 PSI
- Maximum Flow: 8 GPM
- Minimum Flow: 3 GPM
- Maximum Temp. 210°F.
- Maximum Speed: 2000 RPM
- Cleaning Path: 24"
- Approx. Ship Wt: 53 lbs.

Patented Height adjustment

system on the 30" spinner keeps the deck at a constant 3/4" off the ground while raising or lowering spray arm assembly from 3/4" to 2-3/4" to increase or decrease impact. Great for cleaning pressure sensitive surfaces!



Part	Product
3325	24" spinner
3326	30 Spinner



2 year warranty



Features

High pressure safety trigger
Heavy duty lightweight aluminum handle
Heavy duty high pressure swivel with heat treated components (field repairable)
Self aligned rod ends

Custom Fuller Brush assembly eliminates over spray: indoor and outdoor use.

Specifications

- 210°F. maximum
- 2,000 to 4000 PSI
- 12 GPM maximum
- 3 GPM MINIMUM
- Cleans 200 sq. ft./min.
- 20" deck
- Weight: 19 lbs

1/4" 2503 nozzles
3/8" mpt plug on gun



Collapsible handle for easy storage

Part	Product
5915	Model 105C floating
6701	Model 105C w/wheels
5916	Model 105F Floating
6702	Model 105F w/wheels
5917	Swivel Seal Kit



Professional Rotary Cleaning System

Features:

- EZ pull trigger gun minimizes fatigue
- Industrial long life swivel w/ grease fitting
- Cartridge style double bearing assembly
- Rugged ABS cover
- Pro style extended handle with lightweight design allows easy control at safe distance
- Quick release knobs allow for easy storage
- "Zero edge" engineered spray arm maximizes cleaning path
- Heavy duty double braided steel hose for hot water applications

Specifications:

- Maximum pressure: 4000 PSI
- Maximum flow: 8 GPM
- Maximum temperature: 200°F.
- Weight: 17.5 lbs.



Part	Product
6781	18" RCS 1800
6974	Replacement gun
6976	Replacement Swivel
6973	Replacement Spray Bar (no nozzle)
6977	66" Hose assembly
6975	Brush assembly with clips
6978	Swivel repair kit "A" 2100203
6979	Swivel repair kit "B" 2100279



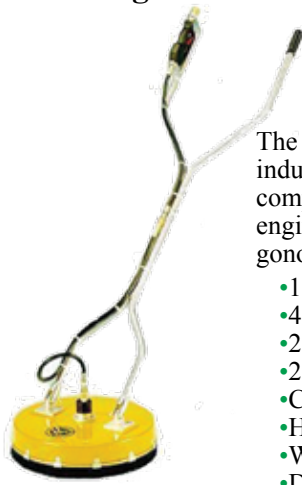
Surface Cleaners

Surface Cleaners



- Save labor, fuel and water
- Eliminate over spray and zebra striping
- Trigger gun controlled cold or hot water
- Balanced spray bar
- Rebuildable swivel

The Original



Classic

Features 4 nozzle spray bar. 2 holes are plugged. If you want to use all 4 nozzles order 2 extra nozzles.

The leading flat surface cleaner in the industry. Classic provides high quality components integrated with superior engineering design to provide an ergonomic, easy to use surface cleaner.

- 10 GPM maximum
- 4000 PSI maximum
- 2500 RPM maximum
- 212°F. maximum
- Cover: Xenoy® ABS 19"
- Handle: 77" long
- Weight: 20 lbs
- Detachable handle

1/4" 25025 nozzles included

Part	Product
6329	Classic Deluxified
5324	Brush
5337	WW312 series 3 swivel
5338	Rebuild kit for WW312 swivel
4792	Seal Kit
5331	Spray Bar 2 Tip
5339	Spray Bar 4 Tip (inc. 4 nozzles)
1768	1/4 meg 2502 nozzle
5325	WW-150-3 3/8" x 5' Black hose with 3/8"mpt x 1/4" mpt ends

Ground Force Flip and Fold



Features 4 nozzle spray bar. 2 holes are plugged. If you want to use all 4 nozzles order 2 extra nozzles.

Features the flip-n-fold handle design which allows the unit to collapse for easy transport and storage. The frame is powder coated and constructed of stainless steel and aluminum.

- 10 GPM maximum
- 4000 PSI maximum
- 2500 RPM maximum
- 212°F. maximum
- Cover: 24" aluminum
- Handle: 60" long
- Weight: 25 lbs



Part	Product
6752	24" Ground Force Deluxified
5337	WW312 series 3 swivel
5338	Rebuild kit swivel
4792	Seal Kit
3559	Spray Bar 2 Tip
3592	Spray Bar 4 Tip
1768	1/4 meg 2502 spray nozzle

Ultra Clean WW

Whether you prefer a model with wheels or the smooth floating action of the hover cover design, the Ultra clean provides you with quality flat surface cleaning. The Ultra Clean with wheels utilizes a four way pivoting caster design while the hover cover model utilizes a heavy duty nylon brush. Both models assure quick and easy maneuverability within tight areas. High impact ABS plastic and powder coated stainless steel plating construction

with Wheels

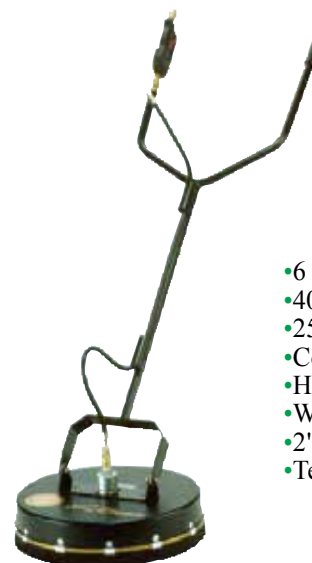


Features:

- 6 GPM maximum
- 4000 PSI maximum
- 2500 RPM maximum
- Cover: 19" ABS
- Handle: 43" long
- Weight: 23 lbs
- Casters: 3"
- Temp: 185°F max

Part	Product
5473	19" Ultra Clean
5337	Swivel Assembly
5331	Spray Bar 2 Tip
4585	3" Caster
3558	Wheel Bracket

Hover Cover



Features:

- 6 GPM maximum
- 4000 PSI maximum
- 2500 RPM maximum
- Cover: 16" ABS
- Handle: 43" long
- Weight: 19 lbs
- 2" nylon brush
- Temp: 185°F max

Part	Product
6717	16" Ultra Clean Hover
5337	Swivel Assembly

Surface Cleaners

Big Guy

Features 4 nozzle spray bar. 2 holes are plugged. If you want to use all 4 nozzles order 2 extra nozzles.

When you have the big job to do! With a 28" diameter, pivoting wheel design, and a lightweight housing, the big guy easily maneuvers over large surface areas.

- 4000 PSI maximum
- 10 GPM maximum
- Cover: 28"
- Handle: 44" long
- Weight: 41 lbs
- Tires: 10" pneumatic
- Caster: 4"
- Dimensions: 38"x 44"x 28"



Two 1/4" 25025 nozzles included

Part	Product
6651	28" Big Guy Deluxified
5937	Brush
5337	WW312 series 3 Green top swivel
5338	Rebuild kit for WW312 swivel
4792	Seal Kit
4510	Spray Bar 2 Tip
3682	Spray Bar 4 Tip
2396	ST-601 Spray gun
5392	WW3107-3 3/8" x 6' 400 PSI black hose with 3/8" mpt x 1/4" mpt ends
1768	1/4 meg 2502 spray nozzle

Maxima Rotary Cleaner

Features 4 nozzle spray bar. 2 holes are plugged. If you want to use all 4 nozzles order 2 extra nozzles.

Maxima's 36" diameter aluminum cover provides maximum surface coverage. The 4 pivoting wheels allow the operator to easily guide the cleaner while the heavy duty nylon brush ensures the high pressure is confined to the surface cleaning area. Ergonomically designed to eliminate operator fatigue and increases safety.

- 4000 PSI maximum
- 10 GPM maximum
- Cover: 36"
- Handle: 77" long
- Weight: 37 lbs
- Breakaway handle
- Quick connection
- Trigger gun controlled



Two 1/4" 25025 nozzles included
Ships UPS oversized 3

Part	Product
6808	36" Maxima Deluxified
3141	Spray bar 2 tips
3142	Spray bar 4 tips
5337	WW312 series 3 green top swivel
5338	Rebuild kit for WW312 swivel
1768	1/4 meg 2502 spray nozzle



Hammerhead Flat Cleaner

Clean flat surfaces in a percentage of the time. The cleaner glides easily across the surface uniformly cleaning pool decks, sidewalks, garage floors, and more.



- Rugged ABS cover
- 4000 PSI maximum
- 1000 PSI minimum
- 8 GPM maximum
- 3 GPM minimum
- 180°F. maximum
- 3/8" inlet
- 25° 02 1/4" nozzles (2)

Part	Product
6539	18" Hammerhead
6537	20" Hammerhead
1709	Black Replacement Gun (old style)
1781	Gray Compensating Gun (New style)
2704	2702026 replacement hose for 18'
3717	2103221 Swivel w/o zerk fitting
1908	2103220 Swivel with zerk fitting
1875	2100279 Major swivel kit w/o c-clip
5704	2100372 Major kit w/zerk & 3 screws
5762	2100373 Major kit w/o zerk 3 screws
1922	2100203 Minor swivel repair kit
5407	18" rotary arm assembly w/ nozzles
1870	20" Rotary arm assembly w/no nozzles
5409	18" plastic brush with clips
2868	20" plastic brush w/clips
5485	Caster and bracket Kit (4)
5268	GP 2502 1/4" MPT nozzles

Hammerhead Professional Cleaner



- Full 22" cleaning swath
- Compensating gun feature
- Heavy-Duty Anodized aluminum components
- Rugged stainless steel handle and casters
- Three nozzle rotating arm
- 4000 PSI maximum
- 1000 PSI minimum
- 8 GPM maximum
- 180°F. maximum
- 3/8" inlet

Part	Product
7007	DCFSCS22Z 22" with casters
5704	2100372 Rotary head major kit
1922	2100203 Rotary head minor kit
3036	2103226 Swivel
3269	2103224 Rotary arm tri nozzle
1781	DCG4000FSC Spray gun
3517	2103223 Brush assembly
3611	2702000 Replacement hose



Commercial Surface Cleaners

For hot and cold water application. Ideal for cleaning parking lots, gas stations, school yards, gangways, etc.

- 4000 PSI maximum
- 250°F maximum
- Relax action gun
- 2 Rotor Arms
- 1/8" 1503 nozzles

Part	Mos #	Size
6863	80.770	21" Hover
6932	80.771	21" w/Casters



Contractor Surface Cleaners

No cleaning task is too much for this surface cleaner. Clean large areas like gas stations, parking lots, airport hangars, and school yards. Industrial strength insures longevity. The onboard wand completes this model allowing you to quickly clean corners or rinse down surfaces.

- 4000 PSI maximum
- 250°F maximum
- Relax action gun
- Mosmatic DYC swivel
- 1/8" 1503 nozzles (2)
- Stainless steel deck
- 4" stainless steel casters



Part	Mos #	Size
6933	80.774	21" 2 Rotor Arms
6934	80.775	30" 3 Rotor Arms

Replacement Swivel & Arms

Part	Mos #	Size
6382	55.253	DYC Swivel
6383	82.942	21" 2 arm, 2 nozzles rotor
6384	82.943	30" 3 arm, 3 nozzles rotor

Small Area Surface Cleaners

Multi-function, multi-task surface cleaner to clean brick walls, RV's, boats, stadium stairs, kennels, sidewalks, car wash walls.

Converts to wall cleaning unit in seconds.

Features:

- Stainless steel deck
- Quick connect lance
- Relax action gun
- 2 1/8" nozzles
- 4000 PSI maximum
- 250°F maximum

Part	Mos #	Size
6930	78.262	12" Hover
6931	78.272	12" with Casters



Water Brooms

Water Brooms

High pressure water broom! Connect to pressure washer up to 3000 PSI

Standard Unit Includes:

- Water broom with nozzles
- 59" wand pipe
- High pressure inlet filter
- Side handle
- Twin caster wheels

Deluxified units also include gun and QC plug



Part	Product
6062	12" Standard kit w/3 nozzles
6604	12" Deluxified kit w/3 nozzles
1545	12" water broom w/o nozzles
6587	16" Standard Kit w/ 4 nozzles
6605	16" Deluxe kit w/4 nozzles
6730	16" water broom w/o nozzles
2215	650135 1/4 meg nozzle

Swivel Conversion Kit

Convert most concrete cleaner swivels to a quality Mosmatic swivel in most cases for less than the cost of a replacement swivel assembly for your machine

Kit includes aluminum conversion ring, 1" stainless steel adaptor, and screws.



Part	Mos #	Product
6612	55.903	Conversion Kit
6168	55.153	3/8FPT x 3/8MPT DYC swivel
6496	59.051	1/4FPT x 1/4MPT DYT swivel
6131	59.153	3/8FPT x 3/8MPT DYT swivel

TKA Turbo Rotor Arms

Designed for use with water and cleaning additive at high RPM. Mosmatic Turbo rotors for use as a self-rotating unit on: Flat surface cleaners, Tire cleaner applicators, parts washers and undercarriage cleaners.

- Pressure: 4000 PSI maximum
- Temperature: 250°F. maximum
- Stainless steel body and pipe
- Inlet: G3/8"F, Outlet 1/8" FPT
- Nozzles NOT included



Part	Mos #	Size
6493	82.811	16"
6494	82.812	18"
6495	82.813	20"
6918	82.814	22"
6919	82.815	24"

Undercarriage Cleaners

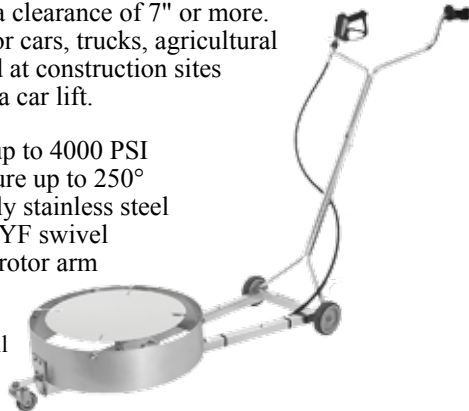


Hurricane Under Carriage Cleaner

Makes it easier to clean underneath vehicles with a clearance of 7" or more. Can be used for cars, trucks, agricultural machinery and at construction sites without using a car lift.

- Pressure up to 4000 PSI
- Temperature up to 250°
- Completely stainless steel
- Quality DYF swivel
- Balanced rotor arm

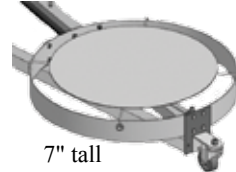
9" tall



The TUW is time saving and more cost efficient than other undercarriage cleaning solutions. It is used with cold or hot water.

When a stabilizer nozzle is installed it has even more power, creating a 3 to 5 foot penetrating stream. The version with the stabilizer also has a higher protective ring.

The guard plate is now standard and protects your rotating arms from damage from objects cleaned off the vehicle, ie, ice.



7" tall

Part	Mos #	Size
6436	80.611	21" w/2 1/8" nozzles
6556	80.613	21" w/2 stabilizer nozzles

Hurricane Adjustable Under Carriage Deck adjustment from 0° to 90° maximum

Pivot the spray deck for multiple cleaning angles.

The adjustable angles allow for "all around" cleaning on construction machines, fleet vehicles, boats or agricultural machines using just one undercarriage cleaner.

Three large pneumatic casters make the cleaning job easier with full range of motion, even on rough surfaces. Standard long range stabilizer nozzles increases the distance and impact of your pressure washer dramatically.



Part	Mos #	Size
6499	80.617	Adjustable Undercarriage

Portable Under Carriage Wash and Combo Surface Cleaner

Inject chemical such as salt neutralizer/ rust inhibitor or degreaser at low pressure



Clean undercarriage of vehicles with high pressure then turn the machine over and clean you garage floor or parking lot.

Remove road grime, fuel & oil
Knock off sand and grease build-up
Remove snow, sludge & salt
Clean flat surfaces in fraction of time
Pool decks, sidewalks, garage floors

Specifications:

- 18" rugged ABS cover
- 4,000 PSI maximum
- 1,000 PSI minimum
- 8 GPM maximum
- 180°F. maximum
- 3/8" inlet
- 25° #2 nozzles (2)
- 24 lbs shipping wt

Part	Product
6891	Under Carriage Wash



Roof Cleaner

Mosmatic roof cleaner is an industrial quality tool specially designed for efficient, high pressure roof cleaning while keeping the operator in a safe operating area. Design allows the operator to maneuver and lower the roof cleaner along the roof surface using the high pressure hose and safety cable



Specifications:

- 3/8" FPT inlet
- 21" stainless steel housing
- 4000 PSI maximum
- 250°F maximum
- 2 x 1503 1/8" nozzles (not included)
- Swiveling hose connector
- Safety Eye for rope or cable
- Pressure gauge
- Ball valve for easy shut off
- Side to side and height wheel adjustments

Part	Mos #	Size
6914	80.658	DR-520 Cleaner

Water Capture Systems



Fury Vacuum Systems

Clean surfaces, capture dirty water and release filtered water back into your water tank, reclamation system or down the drain if local codes allow.

FURY 2400 CVU

Compact vacuum systems capable of fluid recovery with one or two clean and capture tools up to 300 feet.



Clean your surface with a 16" or 24" surface cleaner or pressure washer and remove waste water and debris to the fury 2400CVU in one operation. The primary tank captures the waste and filters out rocks, sediment, etc. The dirty water is filtered so it can be removed through the sump pump to your approved discharge area. The sump pump is operated on 120v and needs to be attached to a generator or plugged into an electrical socket.

This unit is capable of operating two 16" surface cleaners as long as a second pressure washer is used.

Package includes:

- 2400CVU vac unit with 16HP Vanguard Engine
- Tuthill 4005 blower, rated at 355 CFM
- Primary separation tank with sump pump
- 16" clean and capture tool with Talon 4 swivel
- Quantity 2 100 ft vac hose with cam lever couplings

Part	Product
6945	2400CVU Compact Vac Unit

Fury Accessories

Part	Product
6031	16" Clean & Capture Tool
6039	24" Clean & Capture tool
6051	2" x 50' vac hose with couplings
6070	2" x 100' hose with couplings
6078	Vac hose Reel (up to 300')

Vacuum disk

Sturdy disk excellent addition to your vac system to remove liquids. Lay near water to be cleared and turn on vac.

Part	Product
6079	Vacuum Disk



FURY 2400

Gasoline powered system for use with existing hot or cold pressure washer. Capture waste water up to 200 feet.

Waste is sent to the 55 gallon primary tank that catches all the heavy items such as rocks, gravel, etc. The remaining dirty gray water is then sent to the dome tank on the vacuum unit. The waste pump then pumps the water out of a 1" fitting on the front of the machine. The water, which has been filtered down to 200 microns, is then run through the hose to wherever the dirty water is to be discharged.



Package includes:

- 2400 vacuum unit with 16HP Vanguard Engine
- Tuthill 3006 blower, rated at 290 CFM
- Scott belt driven waste pump
- Clear dome separation tank on the unit
- 55 gallon primary separation tank
- 16" clean and capture tool with Talon 4 swivel
- 200 feet of 2" vacuum hose

Part	Product
6943	2400 Vacuum System

Vacu-Boom

When the vac system is turned on the vacu boom seals itself to any hard surface. The liquid is extracted into the boom. Captures and contains concentrated flammables or hazardous liquids without extraction.

Part	Product
6093	Vacu-Boom



Sand Tube

Great to divert water around doorways or drainage systems. Fill with sand or stones.

Part	Product
6130	8' x 48" Black



Portable Heaters

PORTABLE HEATERS

STANDARD FEATURES:

Blaze and Blast Heaters

- Approved for construction
- Overheating thermostat
- Electronic control panel
- Combustion air pressure switch
- Controllable by thermostat, humidistat or timer
- Electronic flame control unit
- 10" pneumatic tires
- Automatic post ventilation cooling cycle
- Run on Diesel #1 and #2, Kerosene, and Jet fuel

Blaze In-Direct Fired Heaters

Diesel indirect fired portable heaters with embedded burner with combustion air obtained from the main ventilation fan. These heaters feature a heat exchanger that contains the flame and expels fumes throughout a chimney connected to the outside.

Can be operated indoors and can also be ducted.

The new four pass heat exchanger technology allows exhaust gases to increase heat exchange with the cooling air and obtain maximum thermal efficiency.



	EC100	EC200	EC300
Heat output	94,759	183,362	258,704
Heated airflow CPM	1,020	1530	2530
Temp rise @64°F	95	136	126
Tank (US Gal.)	11	14	27.7
Run time (Hours)	14	14	13

Part	Model	Volts	A	HP	BTU
6182	Blaze 100	120	4	1/4	112,000
6184	Blaze 200	120	7.5	5/8	204,000
6185	Blaze 300	120	12	1	293,000

Blaze Ducts

Part	Product
3617	12" one way duct adapter Blaze 100
3659	14" one way duct adapter Blaze 200
3667	16" one way duct adapter Blaze 300
3669	12" x 20' Flexible air duct
3672	14" x 20' Flexible air duct
3703	16" x 20' Flexible air duct

NOTE: REPLACEMENT PARTS for all machines available

Blast Direct Fired Heaters

Diesel direct fired portable heaters with embedded burner with combustion air obtained from the main air fan. Generate hot air and the combustion residues produced by the burner are expelled with the hot air and contribute to its heating. They transform all of the nominal input power (from the fuel) into heat, 100% efficiency. Can be used only in well ventilated rooms and where indirect-fired heaters are not required by law.



	GE250	GE360
Heated airflow	1,460 CPM	1,795 CPM
Tank	17.2 Gal	27.7 Gal
Run time	10 hours	11 hours

Part	Model	Volts	A	HP	BTU
6332	Blast 250	120	5	5/8	238,937
6339	Blast 360	120	6	5/8	361,000

FIRE 155 INFRARED HEATER

Characterized by the absence of moving air, the flame generated by the burner heats the front plate which reaches high temperatures and projects heat outward. These infrared diesel heaters also have an embedded burner with dedicated fan for a cleaner combustion.

This helps to burn and stop all combustion residues, guaranteeing a clean combustion and 99.9% efficiency. It's versatility allows it to heat objects and spaces more efficiently than traditional heat sources.

Approved for construction & agriculture
 CSA approved
 Built-in burner with gear pump
 Electronic flame control unit with metal casing
 Low noise level
 Automatic post ventilation cooling cycle



Fuel consumption	1.11 Gal/H
Tank Capacity	17.2 Gal.
Run time	16 Hour

Part	Model	Volts	A	HP	BTU
6363	Fire 155	120	4	1/4	154,000

Gas Pressure Washers

HURRICANE

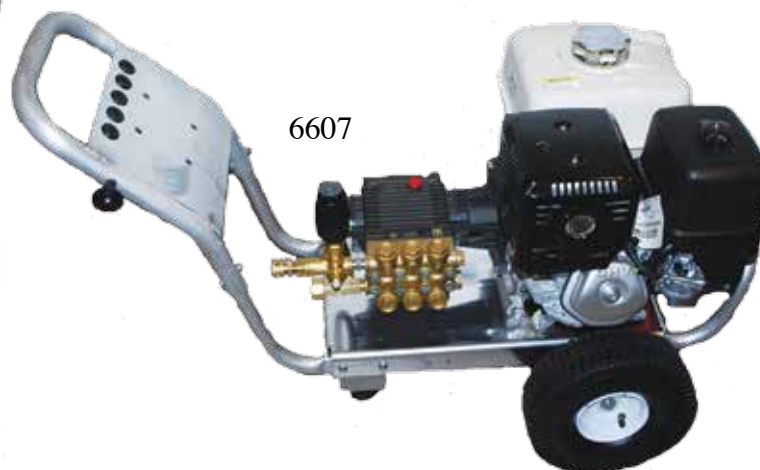


Professional Direct Drive Cold Water Pressure Washers

Hurricane pressure washers are designed for the home owner to heavy duty industrial usage. With their lightweight aluminum frames and pneumatic tires the Hurricane cold water gas driven direct drive pressure washers can be easily moved from one area to another with little effort.



6356



6607

Standard Features:

- Honda engines with low oil protection
- Triplex plunger pump with external unloader
- Ultra lightweight corrosion resistant frame
- Adjustable pressure
- Pneumatic tires
- Thermal relief protection
- Easy engine oil drain system
- 3/4" cold rolled steel axle
- Dual anti-vibration rubber isolators
- Nozzle holders on handle plate

Part	GPM	PSI	Pump	Engine	Unloader	Tires
6278	3.5	2500	RCV3G25	6.5 HP	VRT3-250	10"
6183	3.5	2500	LWD3025G	6.5 HP	VR-54	10"
6356	3.0	2500	TP2530G	6.5 HP	VRT3-310EZ	10"
6212	3.5	4000	ZWD4040G	13 HP	VRT3-310EZ	10"
6915	3.5	4000	RRV4G40D	13 HP	VRT3-310EZ	10"
6607	3.5	4000	EZ4040G	13 HP	VRT3-310EZ	10"

PW Accessory Kits

Gun, hose, lance and injectors are options with all Hurricane Cold Water pressure washers

- EVERYTHING QUICK CONNECTED!
- High pressure hose w/quick connects
- Spray gun w/quick connects plug inlet

- Lance w/quick connect socket outlet
- 5 Quick change nozzles
- Quick change injector kit

Part	Product
6547	1/4" x 35' hose (no injector)
5847	1/4" x 35' 4000 PSI hose
6500	3/8 x 50' hose (no injector)
6550	3/8" x 50' R1 4000 PSI hose kit



Belt Pressure Washers

Cold Water Skid Mount



HURRICANE Skid mount gas driven direct drive pressure washers are designed for heavy duty use. The unit can be bolted to a floor, work bench or trailer. With the protective rubber hockey type rubber feet it can sit stationary on any flat surface.

- Heavy duty aluminum frame
- Honda GX engines
- Triplex direct drive plunger pumps
- Adjustable pressure unloader

Part	GPM	PSI	Pump	Engine	Unloader
6187	3.0	2500	LWD3025G	6.5 HP	VR-54
6430	3.5	4000	ZWD4040G	13 HP	VRT3-310EZ
6389	3.5	4000	RRV4G40D	13 HP	VRT3-310EZ
6470	3.5	4000	EZ4040G	13 HP	VRT3-310EZ

See page 87 for accessory kits

Cold Water Gas Belt Drive

Designed for heavy duty commercial and industrial usage, Hurricane belt drive units will provide cleaning performance under the most challenging situations. Put these work monsters to the test all day long to prove its superior value with minimal maintenance requirements.



Standard Features:

- Triplex plunger oil bath pump
- Adjustable pressure unloader
- Low oil alert
- Aluminum frame
- Pneumatic tires
- Dual handles for easy lifting for storage
- Ship common carrier only

Gun, hose, lance and injectors are options with all Hurricane Cold Water pressure washers

Part	GPM	PSI	Engine	Pump
6580	4.0	3500	Honda 13HP	TSS1511
6082	5.5	3500	Briggs 18HP	HP5535

See page 87 for accessory kits



Belt Pressure Washers

Electric Pressure Washers



Electric Direct Drive

Hurricane electric direct drive pressure washers for light to medium duty commercial or home owner usage. These portable units are excellent for indoor usage for auto dealers, truck bays, etc. Lightweight and fully pneumatic tires with the long bent handle allow for ease of movement around the outside of any facility. Quality Baldor ODP and TEFC motors are featured on all units along with triplex plunger pumps from General, AR, and Comet pumps.

- Baldor electric motors
- 10" fully pneumatic tires
- Gun, lance, nozzle holder
- GFCI on 1.5 and 2 HP units



1750 RPM 120V 5/8" Shaft

Part	GPM	PSI	Pump	Unloader	Motor
6577	2.0	1000	XTA2G15EBA	VR54	1.5 HP TEFC
6393	2.0	1500	LWS2020E	VR54	2.0 HP ODP
6885	2.0	1500	RCA2G22E	VR54	2.0 HP ODP
6542	2.0	1500	XTA2G15EBA	VR54	2.0 HP ODP
6042	2.0	1500	T9051EBF	VR54	2.0 HP ODP
6903	2.0	1500	LWS2020E	VR54	2.0 HP ODP

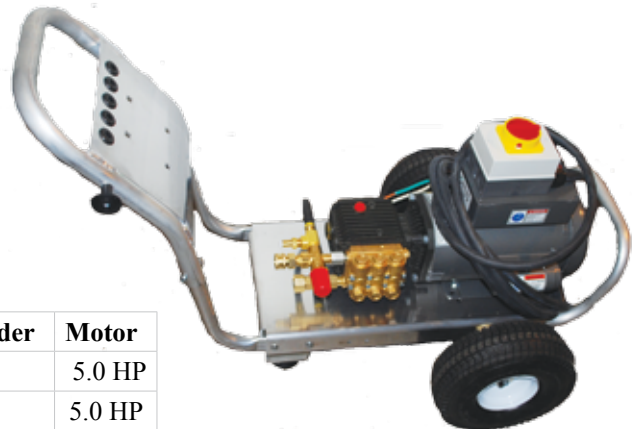
3450 RPM 120V 5/8" Shaft

Part	GPM	PSI	Pump	Unloader	Motor
6396	2.0	1000	LWD2020E	VR54	2.0 HP TEFC
6223	3.0	1000	2SFX30ES3	Bolt-on	2.0 HP TEFC
6270	3.0	1000	2SFX30ES	Bolt-on	2.0 HP TEFC
6811	2.1	1000	TT9061EBF	VR54	2.0 HP TEFC
7017	3.0	1000	TT9071EBF	VR54	2.0 HP TEFC

3450 RPM 240V 3/4" Shaft

- 5 HP units have no GFCI
- Baldor ODP motor
- Heavy duty cam on-off switch
- 36' 10-3 electrical cord

Part	GPM	PSI	Pump	Unloader	Motor
6599	3.5	2000	TT2035EBF	VR54	5.0 HP
6407	3.5	2000	LWD3522E	VR54	5.0 HP



Pressure Washer Accessories

Part	Product
5947	1/4" X 50' hose, gun lance nozzles
6550	3/8" x 50' hose gun lance nozzle injector
6500	3/8"x50 hose, gun, lance nozzles

Electric Pressure Washer Options

Part	Product
4989	Optional upgrade foam filled tires

Electric Skid Mount



HURRICANE Skid mount electric direct drive pressure washers are designed for light to heavy duty commercial and home owner use. The unit can be bolted to a floor, work bench or trailer. With the protective rubber hockey type rubber feet it can sit stationary on any flat surface.

- Heavy duty aluminum frame
- Baldor Electric ODP motor
- Triplex direct drive plunger pumps
- Exterior adjustable unloader

Part	GPM	PSI	Pump	Unloader	Motor
6395	2.0	1000	LWS2020E	VR54	2.0 HP ODP
6402	2.0	1000	LWD2020E	VR54	2.0 HP ODP
6408	3.5	2000	LWD3522E	VR54	5.0 HP ODP

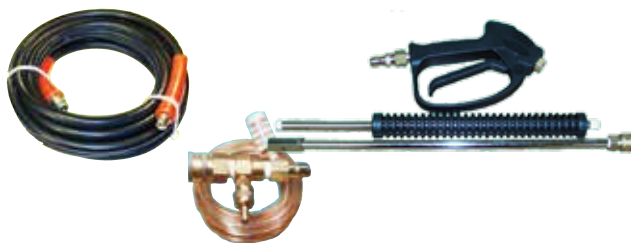


F7 Hand Carry Electric

Designed for stationary use and easy portability for those with limited space. These units can be mounted to a work bench, on a wall, the bed of a truck or simply carried from work site to work site

Part	GPM	PSI	RPM	Volts	Amps	Pump	Unloader	Motor
6004	2.0	1000	1750	120	14.5	AR XTA2G15EBA	VB3K	1.5 HP TEFC
6394	2.0	1250	1750	120		COMET LWS2020E	VR54	2.0 HP ODP
6397	2.0	1250	3450	120		COMET LWD2020E	VR54	2.0 HP TEFC
6404	2.0	1250	3450	120		COMET BXD2020E	Built-in	2.0 HP TEFC
6234	3.0	1000	3450	120	16.5	CAT 2SFX30ES3 190°	Bolt on	2.0 HP TEFC
6886	2.0	1500	1750	120	16.8	AR RCA2G22E	VB3K	2.0 HP ODP
6045	2.0	1500	1750	120	16.8	AR XTA2G15EBA	VB3K	2.0 HP ODP
6124	2.0	1400	1750	120	20.0	General T9051EBF	VB3K	2.0 HP ODP
6296	2.5	1100	3450	120		CAT 2SF30ES	Bolt-on	2.0 HP TEFC
5817	2.0	1500	3450	120	20.0	Comet BXD2020E	bolt on	2.0 HP TEFC
6812	2.1	1500	3450	120	18.3	General TT9061EBF	VB3K	2.0HP TEFC
7018	2.85	1000	3450	120		General TT9071EBF	VR54	2.0 HP TEFC

Pressure Washer Accessories



Part	Product
5947	1/4" X 50' hose, gun lance nozzles
6550	3/8" x 50' hose gun lance nozzle inj.
6500	3/8"x50 hose, gun, lance nozzles
3261	Foam for UPS shipments



Residential Pressure Washer

- Trigger spray gun
- Lance with adjustable jet nozzle
- 18' high pressure hose

Pressure maximum: 1900
GPM maximum: 1.5
Horse Power: 1.5
Weight: 22 lbs.
115v 15a.



Part	Product
6750	AR383

Hot Water Pressure Washers

Hot Water Pressure Washers

Portable Direct Drive

Standard Features:

- Powder coated steel frame
- General pump
- Roll cage with lift hook
- 4 Pneumatic tires
- Schedule 80 coil
- 9 gallon poly fuel tank
- Honda GX390 w/electric start
- Battery & marine battery box
- Beckett burner



Standard Accessories:

- Trigger spray gun w/lance
- 50' high pressure hose
- Chemical injector
- 4 QC spray nozzles
- 1 QC chemical nozzle
- Pressure relief valve
- Thermal relief valve

Part	GPM	PSI	Pump
6105	4.0	3500	EZ4040G

Skid Mounted Belt Drive

Standard Features:

- Heavy duty powder coated steel frame
- Schedule 80 coil
- 12v system w/20amp charging
- Commercial Electric start 12v system
- Battery and box included
- General triplex plunger pumps
- Beckett Burner
- Adjustable thermostat
- 4 belt system

Standard Accessories:

- Trigger spray gun with lance
- 50' high pressure hose
- Chemical injector
- 4 QC spray nozzles
- 1 QC chemical nozzle



Part	GPM	PSI	Pump	Engine
6102	5.5	3500	HP5535	18 HP Vanguard
6106	5.5	3500	TS2021	20 HP GX630

PW Accessories

PW Accessory Kits

Sold with pressure washer only

- EVERYTHING QUICK CONNECTED!
- High pressure hose w/quick connects
- Spray gun w/quick connects plug inlet
- Lance w/quick connect socket outlet
- 5 Quick change nozzles
- Quick change injector kit



Part	Product
6547	1/4" x 35' hose (no injector)
5847	1/4" x35' 4000 PSI hose
6500	3/8 x 50' hose (no injector)
6550	3/8" x 50' R1 4000 PSI hose kit

Aluminum PW Frame

- Heavy duty aluminum
- 10" fully pneumatic tires
- Gun and lance hangar
- Nozzle holders



Part	Frame
4007	F6 Aluminum Base 11.25 x21.88"

Aluminum Skid Frame

- For direct drive pressure washers
- Polished aluminum frame suited to mount up to 5HP electric motor or up to 13 HP gas engine.
- 4 Hockey puck style feet for stability.
- Pre-drilled for motor/engine



Part	Frame
3082	Aluminum 22" x 11.25"

Hand Carry Frame

Easy to carry with soft rubber handle.
Hand portion bolts directly to motor.
Motor is bolted to base
Can be wall mounted.
Steel construction



Pump, motor and un-loader not included

Part
6656

Frame Accessories



Part	Product
2638	4.10 x 3.50-4 pneumatic tire 3/4" hub
3320	4.10 x 3.50-4 pneumatic tire 5/8" hub
5420	13 x 5.00-6 pneumatic 3/4"x77mm hub
3306	10" Foam filled tire 3/4" bushing
5545	350-4 10" inner tube only
4542	Frame foot (hockey puck style)
3029	Nozzle holder grommet
5028	Vibration Dampener 5 & 6.5HP
5029	Vibration Dampener 9 & 13HP

Safety Labels



Meet ANSI
Z535.4 of 2002

Part	Label Kit
6567	Labels for pressure washers (6/kit)

INDEX

A

Accessory Kits **92**
Accumulators **70**
Air Cleaners **60**
Air Filters Honda Engines **60**
Aluminum PW Frame **92**
Anti-fatigue Strap & Belt **18**
AR Jetter Valves **52**
AR Pumps **50**

B

Back Flow Preventer **74**
Baldor Motors **58**
Ball Valve **75**
Ball Valves **31**
Beckett Burner Parts **62**
Belt Drive Pressure Washers **89**
Bendable Wands **17**
Bent Lance Adapter **15**
Black Neptune Hoses **2**
Blue Cap Water Filters **71**
Blue Neptune Hoses **2**
Blue Top Calcium Removal **72**
Blue Top Water Filters **71**
Bolt-on Unloaders **36**
Brass Pipe Fittings **77**
Brass Soap Nozzles **23**
Breco Double Shut-off QC **10**
Briggs Engine Filters **60**
Brushes **79**
Brush Handles **79**
Burner Assembly **62**
Burner Motors **63**
Burner Parts **62**
Burner Rings **65**
Bushings **75, 76, 77**

C

Cable Ties **5**
Cage Frame Pressure Washers **87**
Calcium Removal **72**
Cam Switches **68**
Caps **77**
CAT Pumps **46**
Check Valves **69**
ChekMate Transformer Tester **63**
Chemical Resistant Guns **13**
Chemical Strainers **70**
Clamps **5**
Classic Surface Cleaner **81**
Clear Vinyl Tubing **4**
Coil blanket Insulation **66**
Coil Cleaner **67**
Comet Pumps **44**
Comet Repair Kits **45**
Concrete Cleaners **82**
Couplers **5, 10, 75, 76, 77, 78**
Couplers 22mm **10**
Cox Hose Reels **6**

D

Delavan Fuel Nozzles **66**
Dental Pick Tools **9**
Dirt Killer Rotating Nozzles **24**
Double Shut-off Couplers **10**
Downstream Injectors **28**
Dual Lances **16**
Dual Roll Over Nozzle Holders **19**
Duct Cart **28**
Duct Cleaners **27**
Dump Gun **14**
Duraview Inlet Filters **74**

E

Easy Start Valves **70**
Elbows **75, 76, 77, 78**
Electric Motors **58**
Electric sprayers **73**
Electronic Ignitors **63**
Engine Filters **60**
Engine Throttle Control **57**
Extraction Kit **57**

F

Felt Fuel Oil Element **67**
Fiber Insulation **66**
Filters **23, 60, 67**
Fittings **75, 76, 77, 78**
Flexible Wands **17**
Flexsteel® 250 CB Steam **4**
Float Tanks **71**
Float Valves **71**
Flow Actuated Unloaders **36**
Flow Switches **67**
Foam Jet Kit **26**
Foam Lance **26**
Foam Nozzles **26**
Foot Valves **27**
Frames **92**
Freight Saver Lance Extender **15**
Fuel Filter **67**
Fuel Nozzles **66**
Fuel Pumps **64**
Fuel/Water Separator **66**
Fury Vacuum Systems **85**

G

Galvanized Coupler **77**
Garden Hose Accessories **74**
Garden Hose Ball Valves **75**
Garden Hose Couplings **75**
Garden Hose Fittings **75**
Garden Hose Quick Couplers **75**
Garden Hoses **74**
Garden Hose Swivel **75**
Garden Hose Washers **75**
Gas Valves **65**
Gauges **60**
General Pump Guns **11**
General Pump Repair Kits **42**
General Pumps **37**
Generators **59**
GeniSys 12v burner control **62**
Giant Guns **11**
Giant Pumps **53**
Gray Neptune Hoses **2**
Green Cap Water Filters **71**
Ground Faults (GFCI) **59**
Ground Force Surface Cleaner **81**
Gun/Lance Combos **14**
Guns **11**
Gutter Cleaner **18**

H

Hammerhead Flat Cleaner **82**
Hand Cleaners **79**
Handles **79**
Hannay Hose Reel **5**
Hansen Quick Connects **9**
Heaters **86**
Hex Bushings **75, 76**
Hex Head Plugs **75**
Hex Nipples **75, 76**
High Limit Switches **69**
High Pressure Filters **23**
High Speed Swivels **7**
Hi-Lo Nozzles **25**
Hi Pressure Injector **29**
Hobby Hose, Gun, Lance Kits **14**
Hobby Hoses **4**
Honda Replacement Parts **61**
Hose Clamps **5**
Hose Reels **5**
Hose Reel Swivels **7**
Hoses **2, 3, 4, 5**
Hot Water Pressure Washers **91**
HPC Hose Reels **6**
HPC Nozzles **21**

HPC Quick Connects **9**
HPC Wrapped Cover Hoses **3**
HyPro Pumps **54**
Hypro Water Filters **72**

I

Ignitors **63**
Injector Heads **54**
Injectors **28**
Inlet Filters **74**
Inlet King Nipples **74**
Insertion Kit **57**
Insta-Grip 250 Hose **5**
Insulation **66**

J

JE Adams Swivels **7**
Jetter Valve **43, 52**
JIC Steel Elbow **76**
JIC Steel Hex Nipple **76**
JROD 4 Way Nozzle Holder **19**

K

Karcher Nozzle Holder **19**
Karcher Style Gun **11**
KEW Style Spray Gun **12**
Koil Kleen **67**
Kranzle Vario-Jet Hi-Lo Nozzles **25**
Kraus Naimer Cam Switches **68**

L

Labels **92**
Lance Extender **15**
Lance Grips **16**
Lances **15**
Lance Side Handle **16**
Linear Straight Guns **14**
Low Pressure Guns **14**

M

Maintenance Meter **57**
Manhole Cleaner **27**
Marxoff Gutter Cleaner **18**
McCauley Sprayflex **18**
Metering Valve **31**
Mitco Can Type Filters **67**
Mobile Duct Cart **28**
Molded Grip Lances **15**
Mosmatic Rotor Arms **83**
Mosmatic Surface Cleaners **83**
Mosmatic Swivels **7**
Motors **58**

N

Nipples **75, 76, 77**
Non Insulated Pipes **16**
Nozzle Holders **19**
Nozzle Protectors **19**
Nozzles **15, 21, 66**
Nozzle Unclogger **19**

O

Oil **57**
Oil Filter **67**
Open Gun **11**
O-Ring Pick Tools **9**
O-Rings **9**

P

Packing Extraction Kit **57**
Pipe Fittings **75**
Plastic Ball Valves **31**
Plastic Float Valve **71**
Polypropylene Fittings **78**
Polypropylene Gun **14**
Portable Heaters **86**
PR1000A HP Injector **30**
Pressure Gauges **60**
Pressure Reducing Valve **75**
Pressure Relief Valve **69**
Pressure Switches **67**
Pressure Valve **69**
Pressure Washer Frames **92**
Pressure Washers **87**
ProTek™ Nozzle System **66**
PSI Surface Cleaners **80**
Pulley Sheaves **59**
Pulse Hose **5**
Pump Inlets **74**
Pump Oil **57**
Pumps **37**
Pumps Made Ready **48**
Pump up sprayers **73**
Push-on Hose Barbs **78**
Push On Splicers **78**
Push & Pull lance **17**

Q

Quick Connect Nozzles **22**
Quick Connects **9**

R

Racor Fuel Water Separator **66**
Red Devil Soot Remover **67**

Reelcraft Hose Reels **5**
Reusable Hose Couplers **5**
Roof Cleaner **84**
Rotary Switches **68**
Rotating Brushes **79**
Rotating Nozzles **23**
Rotating Sewer Nozzles **27**
Roto-Jet Rotating Nozzles **24**
Rotor Arms **83**
Rupture Disk **69**

S

Safety Labels **92**
Safety Relief Valves **69**
Salzer Cam Switches **68**
Sand Blast Kit **30**
Sand Tube **85**
Scaltrol Water Treatment **72**
Screw Couplers **10**
Screw Plugs **10**
Sewer Hoses **4**
Sewer Nozzles **27**
Sheaves **59**
Shurflo Pumps **56**
Side Handle **16**
Sidewinder Surface Cleaner **80**
Siphon Pumps **79**
Sludge Pump **27**
Small Area Surface Cleaners **83**
Soap Nozzles **23**
Soap Quick Connect Nozzles **23**
Soap Shooter **26**
Sockets **9**
Solenoid Valves **64**
Soot Remover **67**
Spiraflex Aggie Hose **4**
Splicers **78**
Sprayers **73**
Spray Flex **18**
Spray Guns **11**
Spraying Systems Nozzles **21**
Spring Driven Reel Hose Reel **5**
ST-35R Strainer **70**
ST 85 Push & Pull lance **17**
Stainless Steel Dual Lances **17**
Stainless Steel Guns **13**
Stainless Steel Pipe Fittings **75**
Steam Guns **15**
Steam Hose **4**
Steam Nozzle **15**
Steel Eagle Hose Reels **7**
Steel Eagle Surface Spinners **80**
Steel Pipe Fittings **76**
Strainers **70**

INDEX

Suntec Fuel Pumps **64**
Super Swivels **7**
Sure Fire Flow Switch **68**
Surface Cleaners **80**
Suttner Guns **11, 12, 13**
Suttner Swivels **8**
Suttner Trigger Guns **12**
Suttner Turbo Nozzles **23**
Swivel Hose Reels **7**
Swivels **7**
Swivel Screw Coupler **10**

T

Tank Screens **70**
Tees **75, 76, 77**
Teflon Tape **74**
Telescopic Super Wands **18**
Thermal Relief Valve **68**
Thermostats **69**
Thread Locker **73**
Throttle Control **57**
Ties **5**
Transformers **64**
Transformer Tester **63**
Trigger Guns **11**
Trombone Valve **19**
Turbo Nozzles **23**

U

UDOR Pumps **55**
Under Carriage Cleaners **84**
Unloader Blocks **31**
Unloaders **32**
Unloaders Made Ready **32**

V

Vacu-Boom **85**
Vacuum Switches **68**
Vacuum Systems **85**
Vario-Jet Hi-Lo Nozzles **25**
Vented Grip Lances **16**
Vinyl Tubing **4**
Vipor Rotating Nozzles **25**

W

Wand Pipes **16**
Wands **17**
Wand Saver **15**
Washers **75**
Water Brooms **82**
Water Filters **71**
Water Treatment **72**
Wayne 12volt Burner Assembly **62**
Wayne Burner Parts **62**
Weep Gun **12**

Whip Line Hoses **4**
Whisper Wash Surface Cleaners **81**
Whitewater® Combo Hose **4**
Winco Generators **59**
Wrapped Cover Hoses **3**

X

X-JET Long Range Nozzle **26**

Y

“Y” Connector **74**
“Y” Strainer **70**

