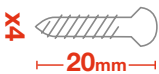
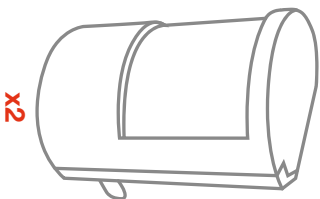
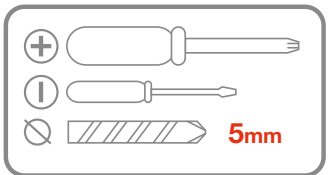


Contents Inhalt Contenu Inhoud Sisältö Inhold Indhold Contenido Conteúdo Περιεχόμενα Innehåll

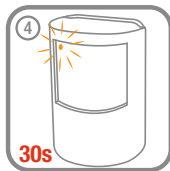
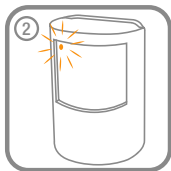
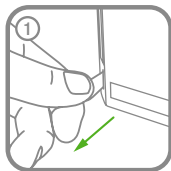
# Honeywell Home

  
HS3PIR2X

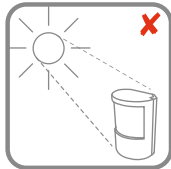
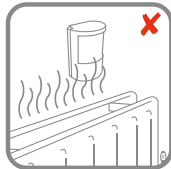
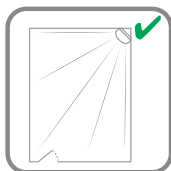
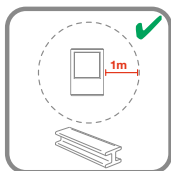
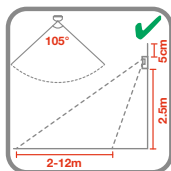


- Ⓒ Setup Ⓓ Einrichtung Ⓔ Configuration
- Ⓜ Installieren Ⓝ Asetus Ⓝ Opsettning
- Ⓜ Configurazione Ⓔ Configuración Ⓜ Configuração
- Ⓜ Põlvõn Ⓔ Installim

- Ⓒ Location planning Ⓔ Planung des Montageortes
- Ⓜ Identification du meilleur emplacement Ⓜ Localisation
- Ⓜ Sijainnin suunnittelu Ⓜ Planlægning af placering
- Ⓜ Posizionamento Ⓔ Planificación de la ubicación
- Ⓜ Planeamento de localização Ⓜ Xuporattá Ⓜ Placering

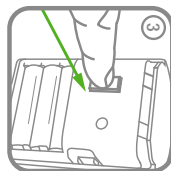
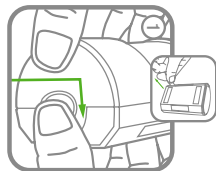
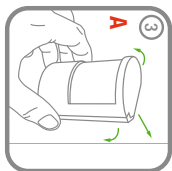
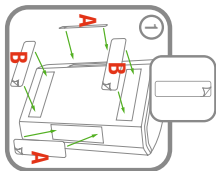


- Ⓒ Put alarm into learn mode for linking. Refer to online manual. Ⓓ Zum Einlernen Alarmanlage in den Programmiermodus versetzen. Siehe Handbuch. Ⓔ Mettre l'alarme en mode apprentissage pour la liaison. Consulter le manuel en ligne. Ⓜ Alarm in leermodus voor koppelen zetten. Zie de online handleiding. Ⓝ Aseta hälytin oppimistilaan linkitystä varten. Katso käsikirja verkosta. Ⓝ Sæt alarmen i programmeringsfunktion med henblik på tilslutning. Se online vejledningen. Ⓜ Mettere l'allarme in modalità di apprendimento per effettuare il collegamento. Fare riferimento al manuale online. Ⓔ Coloque la alarma en el modo de aprendizaje para el enlace. Consulte el manual en línea. Ⓜ Coloque o alarme no modo de aprendizagem para efectuar a ligação. Consulte o manual online. Ⓒ Βάλτε το συναγερμό σε λειτουργία μάθησης για ζεύξη. Ανατρέξτε στο εγχειρίδιο στο διαδίκτυο. Ⓓ Sätta larret i inlärningsläget för länkning. Se onlinehandboken.

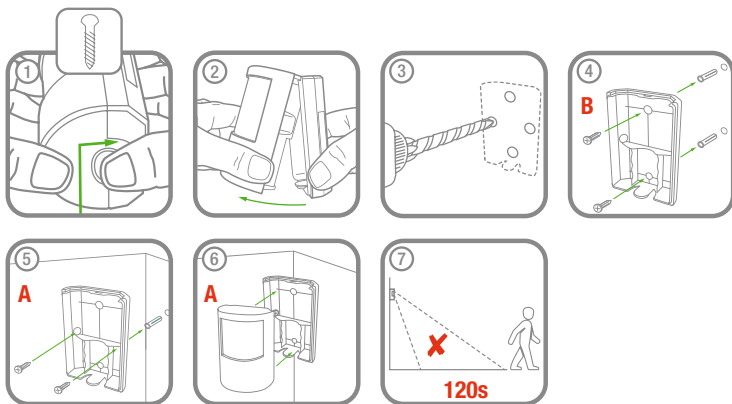


**GB** Installation **DE** Installation **FR** Installation  
**NL** Installatie **F** Asennus **OK** Installation  
**IT** Installazione **ES** Instalación **PT** Instalação  
**GR** Εγκατάσταση **SE** Installation

**GB** Manual linking to alarm **DE** Manuelles Einlernen  
**FR** Liaison manuelle vers alarme **NL** Handmatig aan alarm koppelen  
**F** Manuaalinen linkitys hälyttimeen **OK** Manuel tilslutning til alarm  
**IT** Collegamento manuale con allarme **ES** Enlazando manualmente a alarma  
**PT** Ligação manual ao alarme **GR** Χειροκίνητη σύνδεση σε συναγερμό  
**SE** Manuell länkning till larm



GB Installation DE Installation FR Installation  
 NL Installatie FI Asennus OK Installation  
 IT Installazione ES Instalación PT Instalação  
 Ελληνικά SK Instalation



GB Exit alarm learn mode. Refer to online manual. DE Programmiermodus beenden.  
 Siehe Handbuch. FR Quitter le mode apprentissage. Consulter le manuel en ligne.  
 NL Leermodus verlaten. Zie de online handleiding. FI Lopeta oppimistila.  
 Katso käsikirja verkosta. OK Afslut programmeringsfunktion. Se den online vejledning.  
 IT Uscire dalla modalità di apprendimento. Fare riferimento al manuale online.  
 ES Salga del modo de aprendizaje. Consulte el manual en línea. PT Saia do modo  
 de aprendizagem. Consulte o manual online. GR Εξόδος από τη λειτουργία μίθησης.  
 Ανατρέξτε στο εγχειρίδιο στο διαδίκτυο. SK Avsluta läroläge. Se onlinehandbok.



GB Trouble shooting DE Fehlerbehebung FR Dépannage NL Probleemoplossing  
 FI Vianmääritys OK Problemlösning IT Risoluzione dei problemi ES Solución de  
 problemas PT Resolução de problemas GR Αντιμετώπιση προβλημάτων SK Felsökning

[livewell.honeywell.com](http://livewell.honeywell.com)



32306101-001 Rev\_C

© 2020 Resideo Technologies, Inc. All rights reserved.  
 The Honeywell Home trademark is used under the license from Honeywell International Inc.  
 This product is manufactured by Resideo Technologies, Inc. and its affiliates.