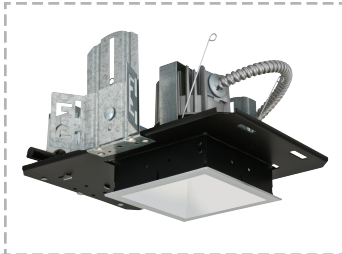


EVO[®] LED S Q U A R E D O W N L I G H T



NOW AVAILABLE WITH
**MAINSTREAM
DYNAMIC**

EVO SQ



This application is ideally suited for EVO squares.

■ The circle in the square. The heart of the EVO[®] square is a sophisticated azimuthal reflector. At one end is EVO's high-performance, solid-state light engine, at the other a square flange. The precise transition between the two yields a luminaire with vanguard performance simply impossible to duplicate using standard square reflectors.

- Innovative azimuthal reflector is miter-free, one-piece, polymer composite and will not distort or separate — no racking, no light leaks

- Keyed reflector positioning keeps the light engine and reflector aligned and locked in position — adjustable frame allows up to 5° of rotation after installation
- Exceptional performance and modular design — like every EVO luminaire, EVO squares boast configurable LED boards, 2.5-step MacAdam's ellipse binning, and exceptional efficacy

EVO Distributions

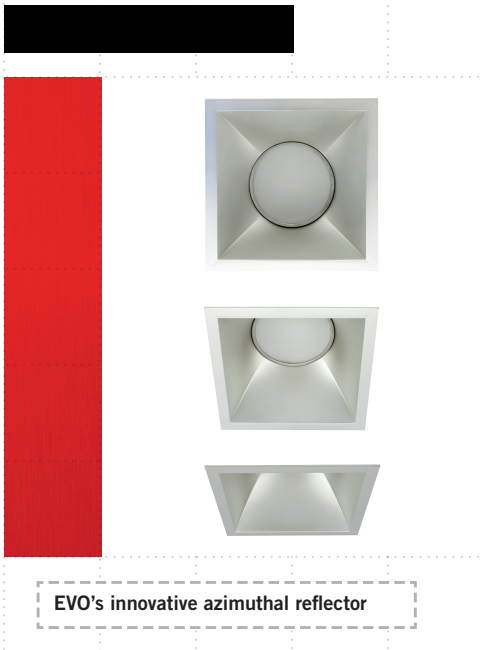


1.0 S/MH

EVO. SQUARE MEANS SQUARE

Gotham® has created an **EVO luminaire** that combines the aesthetic attributes of the square, with exceptional performance that rivals EVO round. Plus, there are all the benefits of advanced solid-state technology — efficiency, control, energy savings.

- 1 PERFECT ALIGNMENT** / EVO's adjustable frame allows rotation of the light engine and reflector up to 5 degrees after the frame is installed. Alignment becomes a very simple task. EVO squares also feature keyed reflector positioning — the reflector is secured to the frame with a precise tab and slot system.
- 2 MITER-FREE CONSTRUCTION** / Most square luminaires use mitered corners, which are subject to racking, distortion, and light leaks. EVO squares feature miter-free, one-piece polymer composite reflectors that maintain their integrity and performance: Square now, square later.
- 3 AZIMUTHAL DESIGN** / Using advanced mathematics and manufacturing, Gotham's design team has created a unique one-piece reflector. A circular profile adjacent to the light engine transforms seamlessly into a square at the flange — resulting in optics that outperform any standard square luminaire.
- 4 EVO MODULARITY** / And of course, EVO squares provide the future-ready modular design benefits inherent in every EVO luminaire: configurable and upgradable LED light engines.
- 5 CONTROLLING LIGHT** / With drivers dimming to 1% or <1% via 0-10V, DALI or DMX/RDM and nLight by Acuity Controls, EVO delivers premium dimming and networkable control solutions.



MAINSTREAM DYNAMIC is now available in EVO with three exciting features: Warm Dimming, Tunable White and Architainment Color. See EVO Dynamic Specification Sheets for more details.



WARM DIMMING

Warm Dimming is the dynamic feature that allows LED luminaires to reproduce the comfortable feeling of traditional sources that warm as they are dimmed. For example, luminaires within the Halogen Range begin at a CCT of 3000K and smoothly shift to 1800K as intensity decreases.



TUNABLE WHITE

Tunable White will allow luminaires to produce, in the instance of the Atmosphere Range, white light from 1800K to 4300K and to shift seamlessly between them along the black body line. Color temperatures can also be accurately set to any point within the range.



ARCHITAINMENT COLOR

Architainment Color takes the classic dynamic lighting effects so often seen in themed or theatrical settings, and makes them accessible for mainstream commercial applications. Here, designers have access to a full range of RGBW color and the ability to create bold transformational effects.