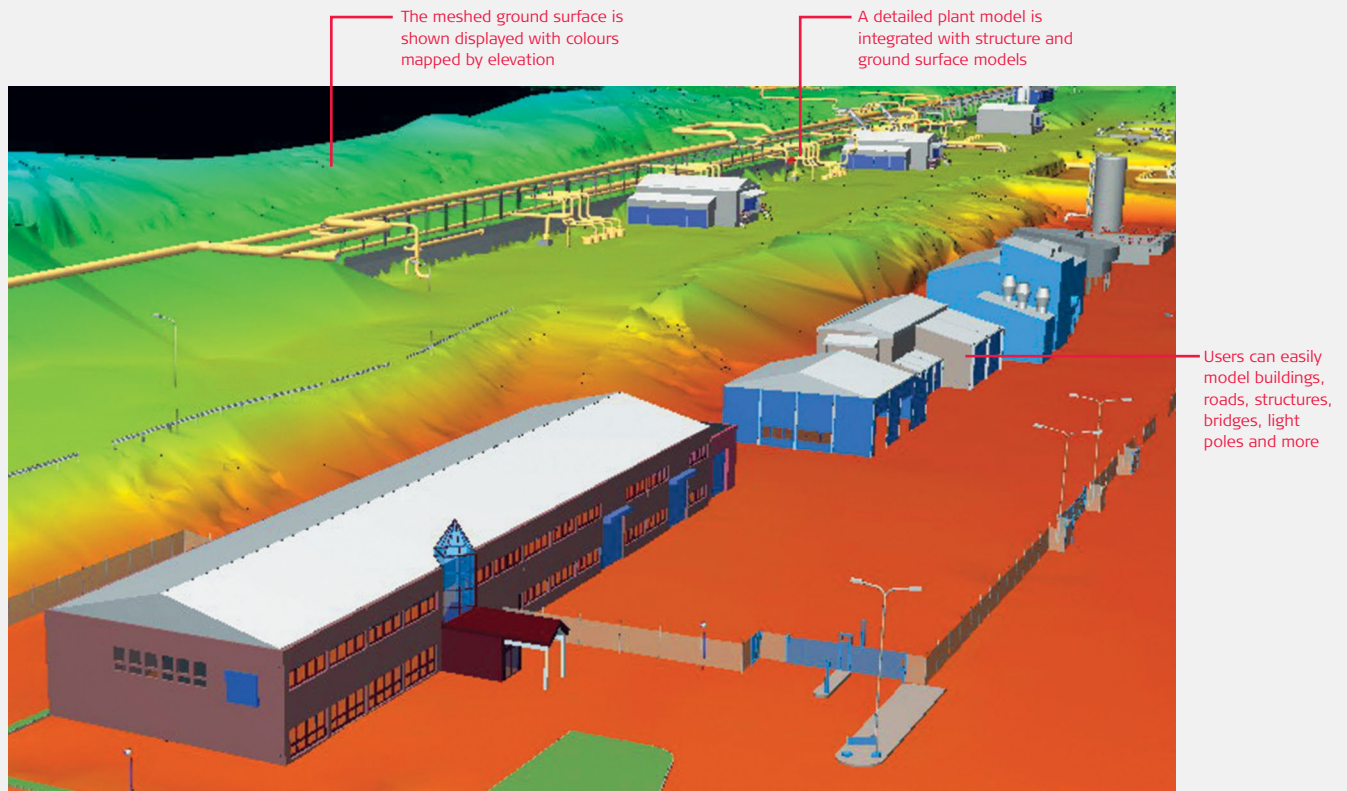


# Leica Cyclone MODEL 9.1

## Processing laser scans into deliverables



### For civil, plant, architectural and other 2D & 3D projects

Unmatched versatility and performance help make Leica Cyclone MODEL the industry's most popular standalone software for analysing rich laser scan data and converting the data into deliverables.

Among its advantages, Cyclone MODEL boasts powerful visualisation and point cloud navigation plus the industry's most complete tool set. These tools cover a wide range of High-Definition Surveying (HDS™) applications in engineering, construction, asset management, heritage, forensics, and other areas.

Cyclone MODEL provides unmatched office productivity, automating many time-consuming tasks and even letting multiple users work on the same data sets simultaneously – thanks to Cyclone's Object/Database foundation. Finally, Cyclone MODEL reflects the data quality & accuracy advantages that users worldwide expect from Leica Geosystems.

### Features and Benefits

- 3D navigation and "fly mode" with 3D mouse support
- Direct import of Leica Pegasus project data, including device trajectories for easy TruView creation along device tracks
- Direct import of DotProduct \*.dp files
- Batch import of iSTAR and Spheron panoramic images
- Texture mapping with Auto-Align panos to scans, supporting iSTAR, Spheron, and Nodal Ninja workflows
- Texture mapping with HDR Tone Map editor
- Multiple, fast, convenient visualisation modes

### Plant & building tools include:

- Best-fit modelling, catalogue fitting, clash detection
- Auto Pipe Finder and Pipe Run Finder - automatically find and fit cylinders

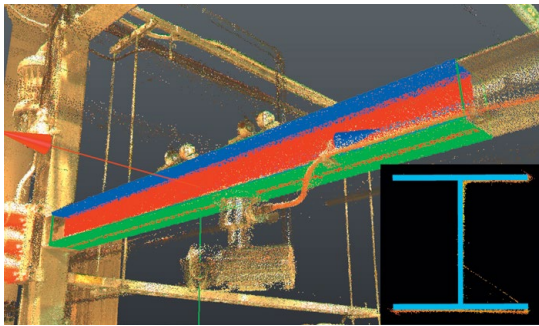
### Civil & related tools include:

- Data collector emulation
- Create contours, breaklines, COGO points, cross sections
- TIN/mesh creation, volumes, areas, clearances

# Leica Cyclone MODEL 9.1



The automated Pipe Run feature lets users select points on connected, straight pipe sections, and the system automatically models a best fit pipe run with elbows in seconds.



Industry first robust steel fitter that automatically places catalog steel shapes quickly and accurately.

## Efficient Point Cloud Manipulation & Navigation

Leica Cyclone has many features that let users work efficiently with rich laser scan data sets. Cyclone's Level of Detail (LOD) graphics display and visualisation modes allow users to "see through" walls, apply shaded rendering, or enhance edges for improved comprehension of dense point clouds. Texture mapping tools allow users to accurately "drape" photos of the scanned scene onto point clouds for an even more realistic viewing experience. Cyclone MODEL's friendly key plan and TruSpace panoramic viewing modes provide intuitive navigation and viewing options.

## High-Performance Modeling for a Wide Range of Applications

Accurately model a selected geometry type, such as pipes, planes, and topographic surfaces. Least-squares fitting and quality-of-fit statistics ensure reliable results, while Cyclone's advanced memory management provides high performance.

## Wealth of Plant & Structure-specific Tools

A new Model Catalogue allows user to save complex models and save them to a catalogue. Users can then insert these models and or share them with others. New Automatic pipe finder finds all cylinders in a point cloud or group of points clouds.

Continuous pipe runs, including elbows, can be modelled automatically. Leica Cyclone MODEL's Piping Mode even lets plant designers add intelligent piping data, including specification, line ID, insulation thickness and SKEYs. Validation of proposed design models – including clash detection – can be done within Leica Cyclone or via export to popular plant design applications.

## Rich Tool Set for Civil, Architectural and Other Applications

For excavation and grading, Surface Deviation tools provide accurate quantity calculations. Volume and area for cut and fill are precisely calculated. Output options include volumes, contours, and/or tables with elevation differences at a user-specified grid sample. A Clearance tool even finds and reports absolute minimum vertical and horizontal clearances for overpasses, bridges, interchanges, and overhead sign structures. A Virtual Surveyor tool emulates a data collector for creating topographic maps.

## Leica Geosystems HDS Software Family

Cyclone MODEL is part of a full software family for managing laser scan data. Check the web address below for additional information.

### Leica Cyclone MODEL Specifications\*

<b>Survey</b>	Includes all functionality of Cyclone SURVEY
<b>Large point cloud mgt</b>	3D limit boxes, slices, interactive visualisation of massive data sets Cyclone Object Database Technology: fast efficient point cloud mgt.
<b>Visualisation</b>	Full 3D fly, pan, zoom, rotate; including 3D mouse support. Control colour mapping using intensity, true-colour, gray scale, colour by elevation, one-sided (front or back), silhouette (enhanced edges). Map external photos to point cloud. Key plan and panoramic viewing.
<b>3D Modeling</b>	Model Catalog, Auto Pipe Finder and Move commands. Least-squares fitting of 3D geometry. Statistical QA reports. Fit cloud to standard object tables items, AISC steel, ASME pipe, user defined tables.
<b>Piping tools</b>	Embed attribute info Line-ID, Spec, SKEY. Fit flange and tie point, automated pipe run with elbows.
<b>Animation</b>	Create fly-through animations of 3D point clouds and models
<b>Scripting</b>	Scripting capabilities in the ModelSpace
<b>COE</b>	Seamless two-way modelled object data integration with AutoCAD, Revit, and MicroStation
<b>Import</b>	Project data from Leica HDS and Pegasus scanners Image and model data: COE, BMP, TIFF, JPEG, PNG, NCTRI, SPH Control data and standard point data formats
<b>Export</b>	Standard point data formats Image and model data: COE, BMP, TIFF, JPEG, PNG Store in JetStream ProjectVault**

### Hardware and System Requirements

<b>Minimum Specifications</b>
<b>Processor:</b> 2 GHz Dual Core processor or better
<b>RAM:</b> 2 GB (4 GB for Windows 7)
<b>Hard disk:</b> 40 GB
<b>Display:</b> SVGA or OpenGL accelerated graphics card (with latest drivers)
<b>Supported operating systems:</b> Windows 7 (32 or 64 bit), Windows 8 & 8.1 (64 bit), Windows 10 (64 bit)
<b>File system:</b> NTFS
<b>Recommended Specifications</b>
<b>Processor:</b> 3.0 GHz Quad Core w/ Hyper-threading or higher
<b>RAM:</b> 32 GB's or more 64 bit OS
<b>Hard disk:</b> 500 GB SSD Drive
<b>Large project disk option:</b> RAID 5, 6, or 10 w/ SATA or SAS drives
<b>Display:</b> Nvidia GeForce GTX 680, Quadro K4000 or ATI Radeon 7850 or better, with 2 GB's memory or more.
<b>Operating system:</b> Microsoft Windows 7 – 64bit
<b>File system:</b> NTFS

Windows is a registered trademark of Microsoft Corporation.  
Other trademarks and trade names are those of their respective owners.

Illustrations, descriptions and technical data are not binding. All rights reserved. Printed in Switzerland –  
Copyright Leica Geosystems AG, Heerbrugg, Switzerland, 2016. 755759en – 10.16

\* Reference the Leica Cyclone 9.1 Technical Specifications document for a complete listing of product specifications.

\*\* Enabled if Generator is licensed and configured correctly on JetStream ProjectVault

Leica Geosystems AG

leica-geosystems.com/hds



- when it has to be **right**

**Leica**  
Geosystems