



Revolutionise
your business

Scaffolding Management Software

Simple & Customized System Aimed at Promoting Safe Working Practices

Are you facing **these issues?**

- ✓ Do you have difficulty in tracking status of your scaffold erection or modification requests on time?
- ✓ Is it challenging to proactively identify scaffold man & material bottlenecks?
- ✓ Are you losing valuable time behind frequent communication for information sharing and getting clearances/approvals?
- ✓ Is it a challenge to identify un-used scaffolds?
- ✓ Is it cumbersome task of collecting data & generating Key Performance Indicators?
- ✓ Does your current safety system lack in ensuring Safe Scaffolds?

If your answer is 'YES' for any of one questions or all of them then the Solution is " ASK-EHS Scaffolding Management System

A comprehensive solution for **construction & operation facility**

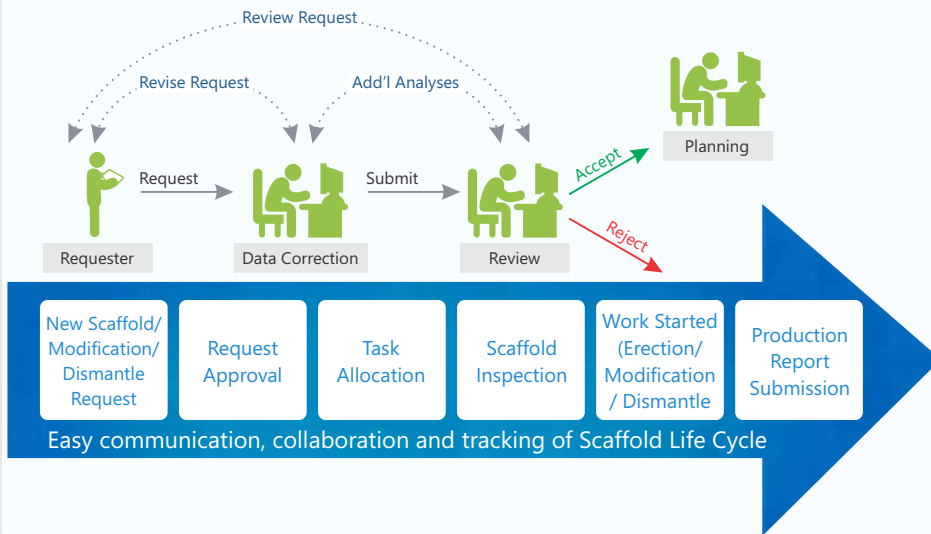
ASK-EHS' Scaffolding Management Software is a comprehensive software solution that manages scaffold requests, approvals, production and material inventory effectively and efficiently. Software system supports entire cycle of scaffolding management and comes with a customized work-flow to validate steps to promote safe working practices.

It also controls the status as request is moved through during its lifecycle. It generates reports, graphs, KPIs & analytical information to make smart business decisions.

- ✓ Automating scaffold life cycle helps to control flow of information
- ✓ Databank of scaffold requests, production records, dashboards for the efficient information gathering and sharing
- ✓ Reports, graphs, analysis & KPIs to make effective business decisions and for efficient preplanning
- ✓ Electronic management of scaffold inventory helps to portray the current scenario and motivates towards effective usage
- ✓ Inspection & scaffold tag management
- ✓ Easy access via smart devices - anywhere & anytime

Scaffold ID	Rent Cost in USD (\$)
W21	5000
W20	4500
W19	4200
W18	4300
W17	4800
W16	4500

Automate scaffolding operation workflow



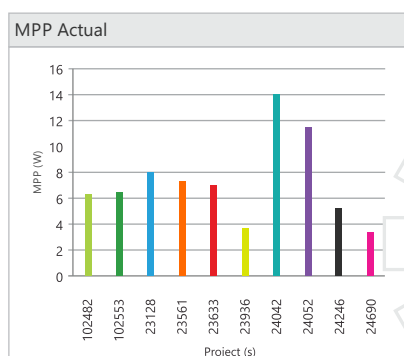
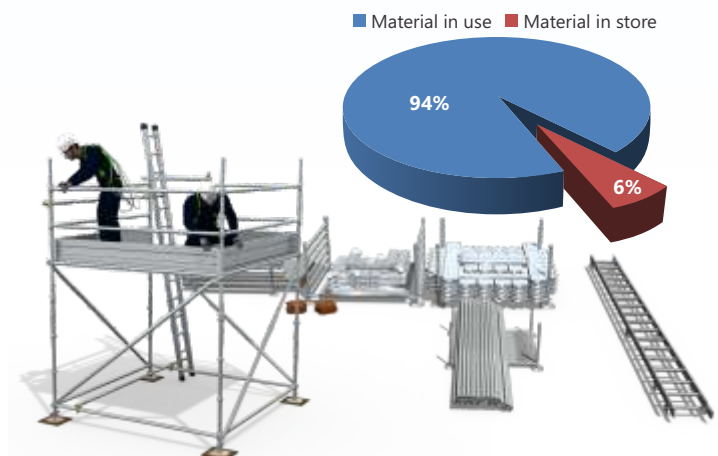
- ✓ Paper less request (new scaffold, alteration, minor modification & dismantling), approval, tracking & inspection
- ✓ Time stamped approval & recommendations
- ✓ Configurable to adopt your approval workflow

Proactively identify bottlenecks for your project in terms of scaffold men & materials

- ✓ Helps identifying men & material bottlenecks against planned scaffold requests
- ✓ Identify & analyze non-productive activity hours
- ✓ Lead-days comparison for requisitioning departments helps higher-ups to improve their planning
- ✓ Tentative up-time data helps better planning of scaffold dismantling process
- ✓ Improve material usage by dismantling scaffolds on-time

Material Inventory

- ✓ In-use and in-store stock
- ✓ Manage purchase, in-word, out-ward, material inspection, re-inspection & dead stock process
- ✓ Configurable to support all scaffold material type



Manage scaffold team skill & measure productivity



- ✓ Scaffold team skill, competency and training records
- ✓ Training scheduler
- ✓ Volume and minutes per piece based efficiency calculation
- ✓ Difficulty level based efficiency identification
- ✓ Compare team wise efficiency

Decision support tool for planner, approving authorities & line management

- ✓ Helps decision makers by providing visuals of their requirements
- ✓ Helps to identify associated hazards, complications & design
- ✓ Know your scaffold locations from bird-eye view
- ✓ Get scaff-tag status (green, yellow, red) and real-time photographs
- ✓ Locate access point(s) with its photograph(s)
- ✓ Easy to incorporate top view(s) of your project/site



Productivity tools – Image Annotation & Floor Map Marking

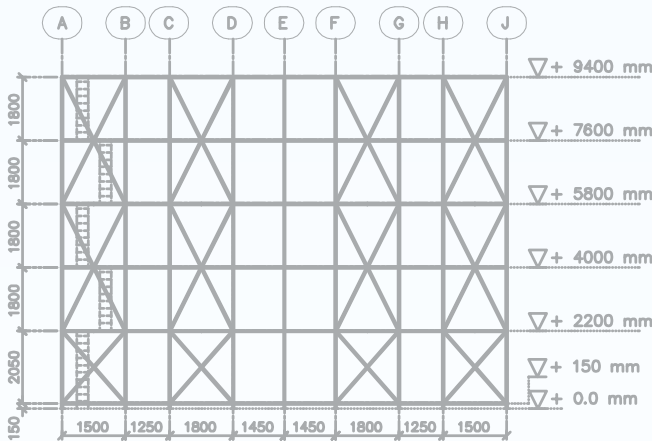
Monitor key performance indicator



- ✓ Scaffold team productivity in cubic meter or minutes per piece
- ✓ Lead days
- ✓ Completion days and delays
- ✓ Inspection failure ratio
- ✓ Most expensive scaffold
- ✓ Material utilization, requirement and stock

Design & material estimation (preliminary)

- ✔ Configurable to adopt all scaffold types
- ✔ Preliminary design & material estimate based on size of scaffold and load requirements (light duty load, medium duty load, heavy duty load, special duty load)
- ✔ Mandatory approval of scaffold design in case of special duty load as per BS/American/Company specific standards.



Type of Scaffold	Use of Scaffold	Scaffold loading per m2	Maximum number of working platforms	Maximum spacing between Standards	Typical load examples per bay
Very light duty independent	Inspection access and painting	75 kg	1 working platform	2.7 m	1 man and tools. No materials
Light duty independent	Power cleaning, painting, light engineering	150 kg	2 working platforms	2.4 m	2 men and tools. No materials
General purpose independent	Light engineering, e.g. welding or electrical	200 kg	2 working platforms and 1 at very light duty	2.1 m	2 men and 175 kg of materials
Heavy duty independent	Heavy engineering, e.g. large pipework or structural	250 kg	2 working platforms and 1 at very light duty	2.0 m	2 men and 250 kg of materials
Special purpose	To be stated on design drawings				

Job hazard analysis & safety inspections

- ✔ Work at height and scaffold operation specific hazards & control measures library
- ✔ Job hazard analysis library
- ✔ Configurable safety inspection checklists
- ✔ Configurable scheduled inspections
- ✔ Alert to concern authorities in case of scaffold found 'unsafe to use'

RISK ASSESSMENT

CONSEQUENCE TABLE

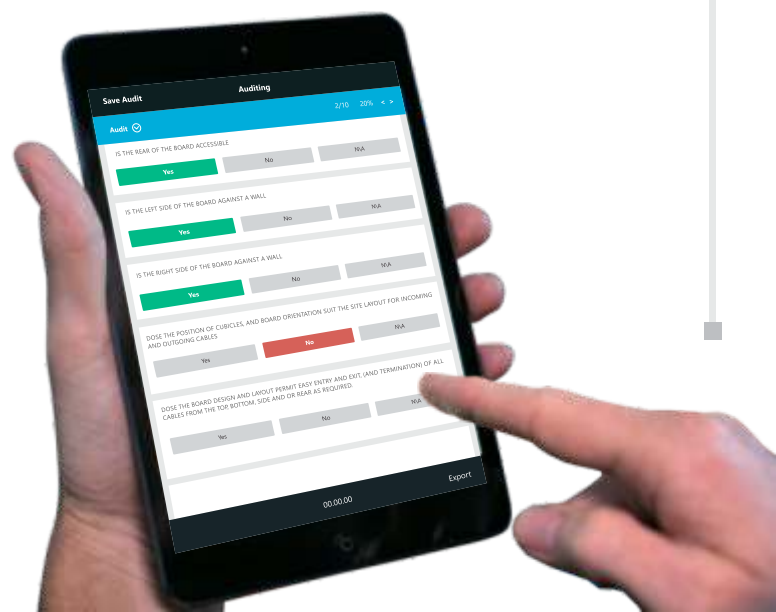
CONSEQUENCE	HEALTH & SAFETY	ENVIRONMENT & HERITAGE	COMMUNITY/MEDIA/GOVERNMENT	LOSS/DAMAGE
LOW	First Aid treatment	Limited damage to area of low significance	Public concern restricted to local complaints	\$0 - \$15k
MINOR	Medical treatment	Minor short-term damage to environment/heritage area	Minor, adverse local public or media attention and complaints	\$15 - \$150k
MODERATE	Classified injury (LTI or restricted workcase)	Moderate effects on environment/heritage	Attention from media and/or heightened concern from community	\$150 - \$1.5M
MAJOR	Fatality or severe permanent disability	Significant environment/heritage damage	Significant adverse national media/public attention	\$1.5M - \$15M
CRITICAL	Multiple fatalities/health effects to >50 persons	Severe damage environment/heritage with long term effects	Serious public or media outcry	\$15M - \$150M

LIKELIHOOD TABLE

LIKELIHOOD	DESCRIPTION	FREQUENCY AT LOCATION
Almost certain	Expected to happen	Occurs once a week
Likely	May easily happen	Occurs once a month
Possible	May happen	Occurs once every year
Unlikely	May happen sometime	Occurs once every 10 years
Rare	May happen in extreme circumstances	Occurs once every 100 years

RISK ASSESSMENT

	CONSEQUENCE				
	Low	Minor	Moderate	Major	Critical
Almost certain	High (11)	High (16)	Extreme (20)	Extreme (23)	Extreme (25)
Likely	Moderate (7)	High (12)	High (17)	Extreme (21)	Extreme (24)
Possible	Low (4)	Moderate (8)	High (13)	Extreme (18)	Extreme (22)
Unlikely	Low (2)	Low (5)	Moderate (9)	High (14)	Extreme (19)
Rare	Low (1)	Low (3)	Moderate (6)	High (10)	High (15)



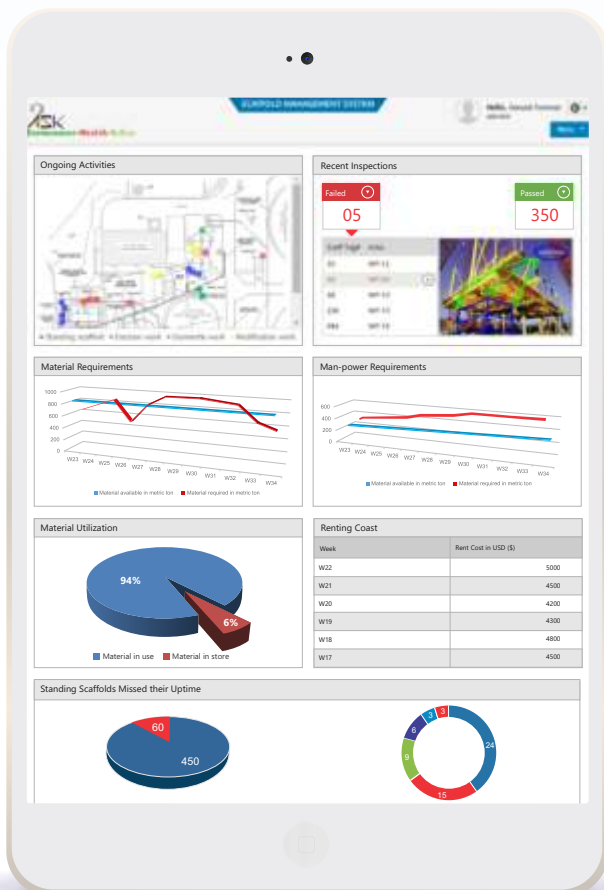
Invoicing data

- ✓ Cubic meter data
- ✓ Material usage data
- ✓ Material inventory data
- ✓ Man-hour usage data
- ✓ Scaffold up-time data



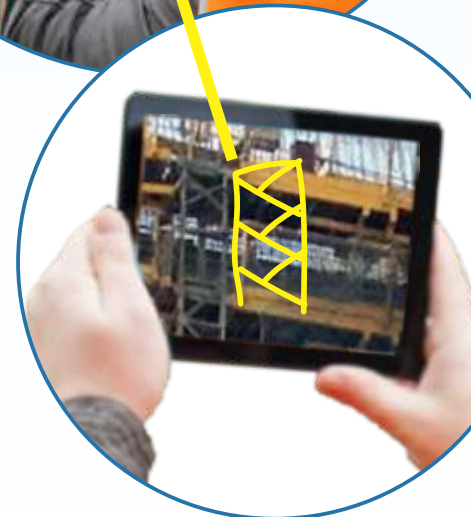
iPad/Tablet compatible

- ✓ Simple interface for non-tech savvy users
- ✓ Built for on-field operations - request, inspection, production data & tracking
- ✓ Take picture(s) of target location and annotate it with your requirements
- ✓ Track scaffolds & its status – ready to use, how much work completed, failed during inspection
- ✓ Works with/without network connectivity (offline & online)



Applicable for EPCI contractors/project owners and scaffolding contractors

- ✔ Comprehensive tracking of scaffolders training, competency level & certification
- ✔ Ease of managing material inventory operation - starting from material ordering to dead stock
- ✔ Real-time material in-use location and store
- ✔ Monitoring of team productivity
- ✔ Support for material estimation & design (basic) guidelines
- ✔ Better control over risk with the help of enriched job hazard analysis library
- ✔ Timely scaffold inspections and immediate alerts for un-safe scaffolds
- ✔ Accurate invoicing with supporting documents



Achievements

- ✔ 0% scaffold request lost
- ✔ Timely request approvals
- ✔ Reduction in delays of scaffold availability
- ✔ Reduced communication gap/error
- ✔ Savings in scaffold production cost
- ✔ Rapid kick-off meetings between scaffold requestor and scaffold team
- ✔ Timely scaffold inspections and immediate alerts for un-safe scaffolds
- ✔ Sound monitoring of team productivity
- ✔ Easy tracking of scaffolders' training, competency level & certification
- ✔ Real-time reporting, KPIs and statistics in no time – without any manual effort

Tools & functionalities



Web-based solution

Internet/Intranet based secure application, runs at single/multiple location(s) as per hierarchy of the organization



User friendly interface

User friendly interface to operate, optimize data entry, quick access to reports & graphs and provides easy navigation among system components



Smart device support

Compatible with iPad, Android & Windows tablet devices



Email alerts & notifications

Set email alerts & notification for yourself and other responsible person(s) can successfully pass instruction on immediate basis via email/sms



Graphical view of report

Graphical view of reports (charts, graphs) to display KEY data in easy and analytical way



Analysis of interlinked data

Generates data by analysing information from various modules



External data file linking

Facility to attach external documents, images, flow-charts, graphs, data files, which can be used as reference materials



Security

Limited access rights to users/work-groups. Limited access to files, documents, reports and more

Support

1 Multilingual end-user's help document

2 Data configuration help document

3 Support team for data configuration

4 Online & onsite trainings

5 Train the trainer - trainings

6 Regular update of bugs, security patches & technological advancements

7 24/7 email and telephonic support

Is it Costly?

Available on yearly subscription cost

Subscribe Now

Call us on: +91 261 2724994 or
Write us at: info@ask-ehs.com