



Inspection Notice
MSA PFL / SRL Rivets
2.4m and 2.7m V-Edge™ Cable PFL
6m V-Edge™ Cable SRL

June 4, 2019

MSA Corporate Center
 1000 Cranberry Woods Drive
 Cranberry Township, PA 16066
 800.MSA.2222
 www.MSAsafety.com

Dear MSA Fall Protection Customer,

MSA is issuing this Inspection Notice to inform you that MSA has identified isolated instances of unflared top eyelet rivets in MSA V-Edge™ 2.4m Twin Leg Cable PFL. **MSA has not received any reports of injuries associated with this condition. However, we are requesting that you perform the inspection outlined in this notice.**

An unflared top eyelet rivet may eventually begin to dislodge from the PFL. If the rivet begins to dislodge from the PFL, the PFL may not arrest a fall.

In a review of all riveted connections on PFLs and SRLs, MSA has identified that the field inspections in Table 1 are to be performed.

Product (See Appendix A for Part Number List)	Rivet(s) to Inspect (See "Inspection Instructions" section for inspection details)	Number of Rivets per PFL/SRL Assembly (See Appendix B for Figures showing Rivet Locations)
2.4m V-Edge Twin Leg Cable PFL	Top Eyelet	2
	Casing	8
2.4m V-Edge Single Leg Cable PFL	Top Eyelet	1
	Casing	4
2.7m V-Edge Twin Leg Cable PFL	Top Eyelet	2
	Casing	8
2.7m V-Edge Single Leg Cable PFL	Top Eyelet	1
	Casing	4
6m V-Edge Cable SRL	Shock Pack	2

Table 1

MSA is committed to safety and quality and has implemented increased inspection and quality controls to prevent this condition in the future.

MSA is advising all customers to inspect the rivets listed in Table 1.

Inspect per the Instructions in this Notice. Remove from service any PFL or SRL that does not pass the inspection.



MSA Corporate Center
1000 Cranberry Woods Drive
Cranberry Township, PA 16066
800.MSA.2222
www.MSAsafety.com

Inspection Instructions

Perform the following inspection to determine whether your PFL or SRL needs to be taken out of service. Please reference Appendix B for assistance in locating each type of rivet.

Top Eyelet Rivets

- 1) Place the PFL on a flat surface so that there is not a load on the top eyelet rivet.
- 2) Attempt to remove the top eyelet rivet from the eyelet by pushing the rivet.
- 3) Attempt to remove the top eyelet rivet from the eyelet by pulling on the rivet.

Casing Rivets

- 1) Hold or suspend the PFL such it does not make contact with a surface that would prevent movement of the casing rivets.
- 2) Attempt to remove the casing rivets by pushing the rivets.
- 3) Attempt to remove the casing rivets by pulling on the rivets.

Shock Pack Rivets

- 1) Hold the SRL shock pack such that the shock pack does not make contact with a surface that would prevent movement of the shock pack rivets.
- 2) Attempt to remove the shock pack rivets by pushing the rivets.
- 3) Attempt to remove the shock pack rivets by pulling on the rivets.

Some small back and forth movement of the rivets is to be expected while pushing or pulling. If any of the rivets are able to be removed from the PFL/SRL, remove the PFL/SRL from service.

Note: If there is a green dot on your PFL/SRL box label or there is a green dot on the end of your rivets, it has already been inspected by MSA and has been determined to be acceptable. No further inspection on your part is necessary.

If there is any question about the results of the inspection, remove the PFL/SRL from service and contact MSA Customer Service.

Replacing Affected PFLs and SRLs

We recognize that this is an inconvenience and, in an effort to minimize any disruption, we pledge to take any replacement actions as expeditiously as possible.

If you are in possession of PFLs or SRLs that have an unflared rivet, we will provide you with replacements free of charge.



MSA Corporate Center
1000 Cranberry Woods Drive
Cranberry Township, PA 16066
800.MSA.2222
www.MSAafety.com

To receive a replacement, please complete the enclosed *MSA PFL/SRL Rivet Inspection Return/Replacement Form* and e-mail it to MSA Customer Service at the appropriate e-mail address below. Replacement PFLs/SRLs will be shipped to you and we will forward you instructions for returning the affected PFLs/SRLs.

MSA Customer Service Contact Information:

If you have any questions regarding this Inspection Notice, please contact MSA Customer Service as follows:

- U.S., Canada, or U.S. Territories – 1-866-672-0005 or by email at: ProductSafetyNotices@MSAafety.com.
- Outside the U.S., Canada, and U.S. Territories – 724-776-8626 or by email at: LAMZonecs@MSAafety.com.

We apologize for any inconveniences that this may cause; however, your safety and continued satisfaction with our products is important to us.

Best regards,

A handwritten signature in blue ink that reads "Nathan Andrulonis". The signature is fluid and cursive.

Nathan Andrulonis
Manager of Product Safety

PS19018-03

Appendix A

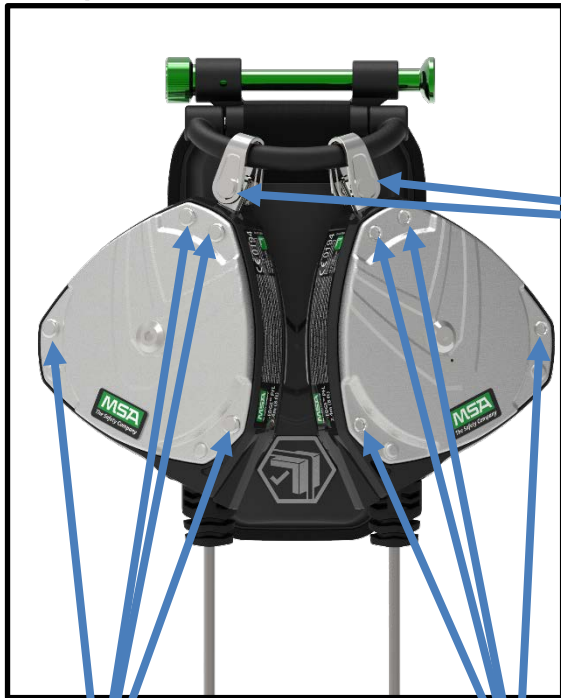


Part Numbers Requiring Inspection

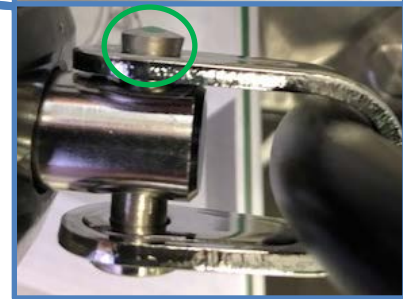
MSA Corporate Center
 1000 Cranberry Woods Drive
 Cranberry Township, PA 16066
 800.MSA.2222
www.MSAafety.com

2.4m V-Edge Single Leg Cable PFL			
63062-00A	63062-00ACA	-	-
63062-00B	63062-00BCA	-	-
63062-00C	63062-00CCA	63062-00CEU	-
63062-00D	63062-00DCA	-	-
63062-00E	63062-00ECA	63062-00EEU	-
63062-00F	63062-00FCA	-	-
-	-	63062-00IEU	-
-	-	63062-00JEU	-
2.4m V-Edge Twin Leg Cable PFL			
63162-00A	63162-00ACA	-	-
63162-00B	63162-00BCA	-	-
63162-00C	63162-00CCA	63162-00CEU	-
63162-00D	63162-00DCA	-	-
63162-00E	63162-00ECA	63162-00EEU	-
63162-00F	63162-00FCA	-	-
-	-	63162-00IEU	-
-	-	63162-00JEU	-
2.7m V-Edge Single Leg Cable PFL			
63072-00A	-	-	-
2.7m V-Edge Twin Leg Cable PFL			
63172-00A	-	-	-
6m V-Edge Cable SRL			
63406-00A	63406-00ACA	63406-00AEU	63406-00ACN
63406-00B	63406-00BCA	63406-00BEU	63406-00BCN

Note: Although a twin leg unit is shown for illustrative purposes, single leg units are also to be inspected.



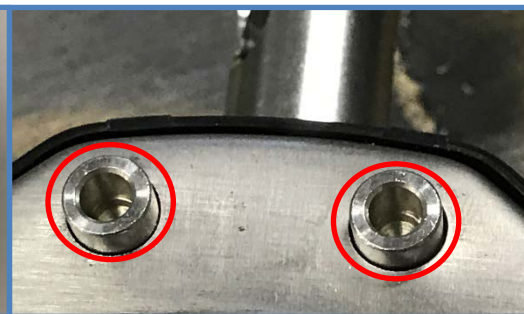
Unflared Top Eyelet Rivet



Flared Top Eyelet Rivet



Flared Casing Rivets

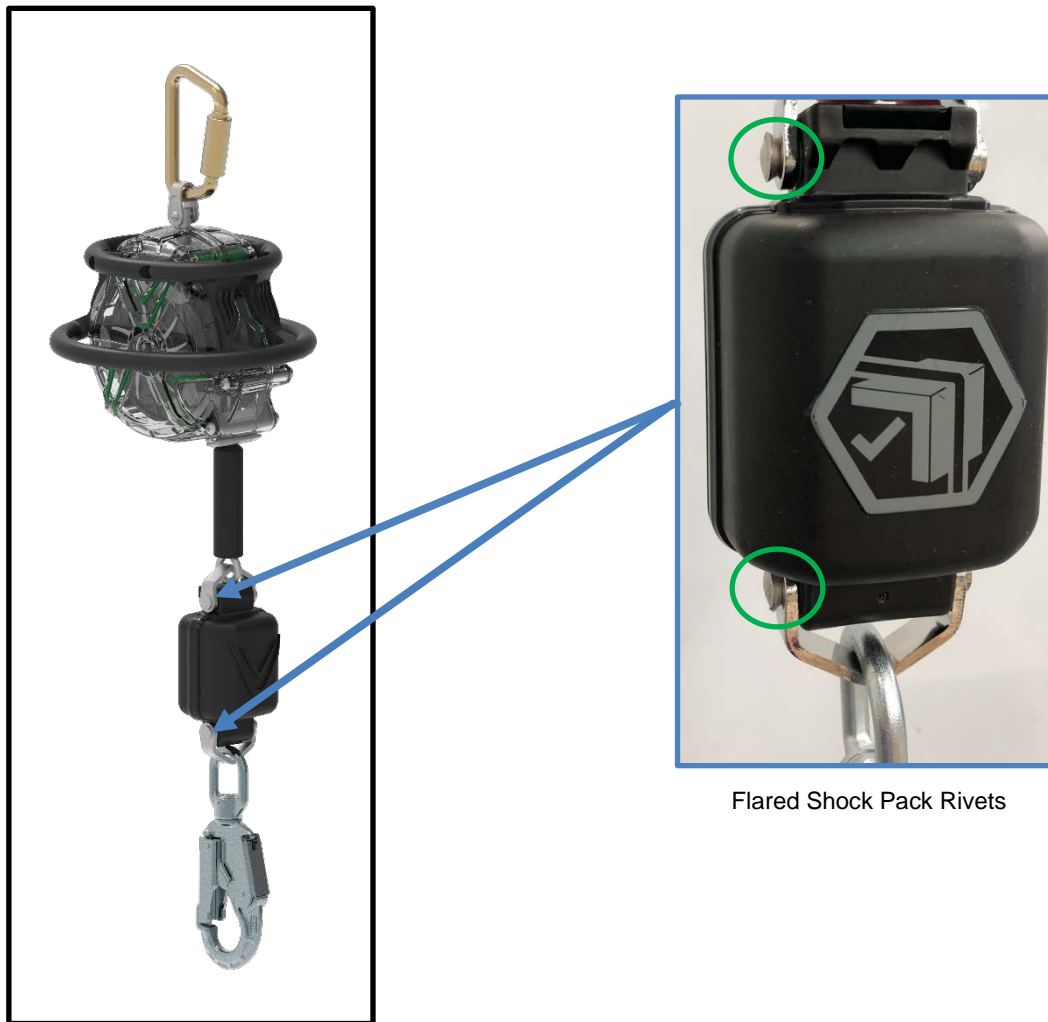


Unflared Casing Rivets

Figure B-1: 2.4m and 2.7m V-Edge Cable PFL Rivet Inspection Locations

Appendix B (Page 2 of 2)

MSA Corporate Center
1000 Cranberry Woods Drive
Cranberry Township, PA 16066
800.MSA.2222
www.MSAafety.com



Flared Shock Pack Rivets

Figure B-2: 6m V-Edge Cable SRL Rivet Inspection Locations

MSA PFL/SRL Rivet Inspection Return/Replacement Order Form



MSA Corporate Center
1000 Cranberry Woods Drive
Cranberry Township, PA 16066
800.MSA.2222
www.MSAafety.com

Please complete this form and email it to MSA Customer Service at:

- U.S., Canada, or U.S. Territories – ProductSafetyNotices@MSAafety.com
- Outside the U.S., Canada, and U.S. Territories – LAMZonecs@MSAafety.com

Multiple orders can be placed by submitting additional copies of this form.

Name: _____

Shipping Address: _____

Phone: _____ E-Mail: _____

MSA PFLs/SRLs you are Ordering – Free of Charge

Part Number	Quantity
_____	_____
_____	_____
_____	_____
_____	_____
_____	_____
_____	_____
_____	_____

MSA will ship the replacement PFLs/SRLs and forward instructions for returning to MSA an identical quantity of affected PFLs/SRLs.