



Document Management



Origination Workflow



Credit Adjudication



Lead Management



Partner Portal



Analytics & Reporting



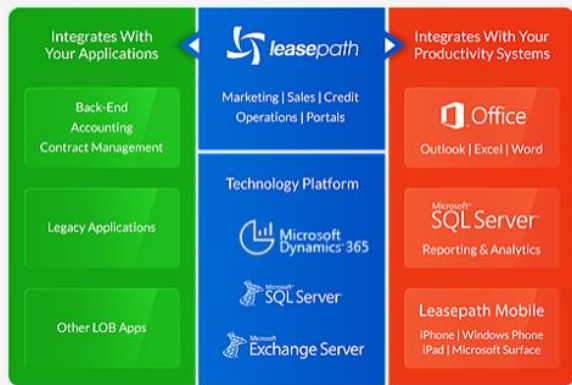
Mobile & User Experience



Integration & Apps



Data Security & Audit



Customer Relationship Management

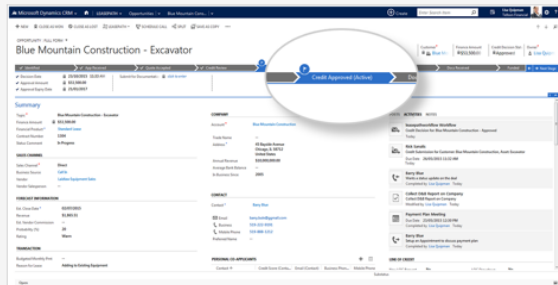
Microsoft Dynamics 365 is the best relationship management software in the world. Imagine it optimized and customized specifically for your industry, then add Origination, Credit, and Documentation - **now you have the Leasepath CRM Loan Origination System.**



Lead Management

Generate more leads and track their process. Use Leasepath Lead Management features such as:

- Campaigns
- Segmentation
- Qualifying Workflow
- Lead Insight



Loan Origination Workflow

Leasepath provides a structure and framework for the processing of new business.

Define best practices for your sales team to automatically follow

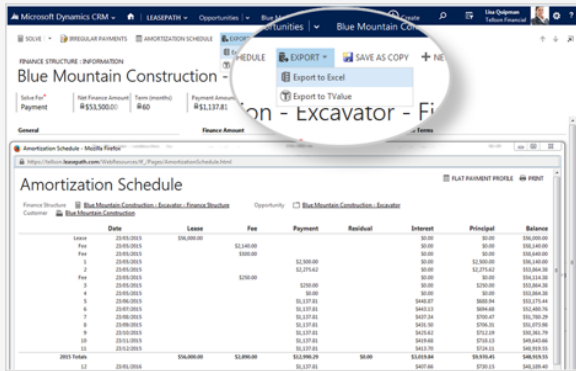
Ensure opportunities are qualified early on in the process

Easy for Partners and Employees to securely and quickly start the Loan Origination process.



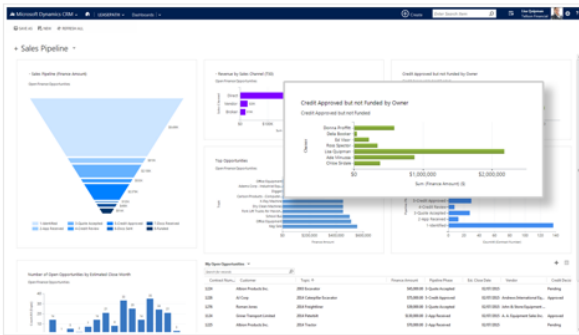
Mobile & The User Experience

Users can take advantage of the platform that makes them more productive at any time. No other product offers Leaspath's integration with Microsoft Outlook, Mobile Apps (both Cell and Tablet), and works On-premise or from the Cloud.



Integration & Apps

One system that does everything does not exist. There are 3rd party Apps for everything, even in the Enterprise. Today's best systems must be designed to work with other systems and have an App ecosystem. Leaspath does.



Analytics & Reporting

Use Leaspath's dashboards and metrics to analyze performance and trends.

Measure success factors with actual results and adjust your risk tolerance and strategy accordingly.

ACCOUNT : FULL FORM ▾
Griner Transport Limited

Ratios

	2014	2013	2012
Profitability			
Gross Margin	20.00 %	15.00 %	16.67 %
Net Profit Margin	4.50 %	2.00 %	2.22 %
Return on Assets	22.73 %	10.87 %	11.71 %
Return on Equity	22.86 %	12.21 %	13.25 %
Liquidity			
Current Ratio	3.00	4.92	4.60
Quick Ratio	4.29	4.38	4.00
Utilization			
Days Receivable	7.20	10.35	10.00
Sales/Receivable	10.00	5.22	6.00
Net Sales To Working Capital	3.57	2.35	2.79
Days Inventories	4.50	3.71	4.32
Days Payable	3.60	3.71	4.32
Operating Expenses/Sales	0.10	0.09	0.10
Leverage			
Total Liabilities to Net Worth	0.12	0.18	0.17
Total Liabilities to Tangible Net Worth	0.12	0.18	0.17

Key Values

Credit Adjudication

Leasepath ensures that opportunities arrive in Credit Department queues only after all the required business rules and processes have been followed. Credit Managers are then automatically notified that a new opportunity needs their attention and they can proceed to use Leasepath to fully adjudicate the deal.

Attached Documents

Document ID	Year	File Name	Date Attached
1	2014	CATERPILLAR	2015-09-11 10:22 AM
2	2014	Bank Statement	2015-09-11 10:22 AM
3	2014	Equifax (E)	2015-09-11 10:22 AM
4	2014	Business Credit Report	2015-09-11 10:22 AM
5	2014	Bank Statements	2015-09-11 10:22 AM
6	2015	Business Credit Report	2015-09-11 10:22 AM
7	2015	D&B Report	2015-09-11 10:22 AM

Document Management

Leasepath allows users to capture and store executed documents and attaches them digitally to a deal. In addition Operations will save time by using Leasepath to generate and package deals prior to the delivering them to the end customer, vendor, or funder.

Security Role: Leasepath Credit Analyst

	Admin	Core Research	Marketing	Sales	Service	Business Management	Credit Management	Customer Care	Custom Entries
Accounting System Import Log	○	○	○	○	○	○	○	○	○
Application	○	○	○	○	○	○	○	○	○
Asset	○	○	○	○	○	○	○	○	○
Asset Category	○	○	○	○	○	○	○	○	○
Asset Type	○	○	○	○	○	○	○	○	○
Attached Document	○	○	○	○	○	○	○	○	○
Attached Document Type	○	○	○	○	○	○	○	○	○
Auto Number	○	○	○	○	○	○	○	○	○
Bank	○	○	○	○	○	○	○	○	○
Bank Branch	○	○	○	○	○	○	○	○	○
Bank Relationship	○	○	○	○	○	○	○	○	○
Business Owner	○	○	○	○	○	○	○	○	○
Business Service	○	○	○	○	○	○	○	○	○
Business Unit Settings	○	○	○	○	○	○	○	○	○
Corporate Financials	○	○	○	○	○	○	○	○	○
Cost of Borrowing Rates	○	○	○	○	○	○	○	○	○
Country	○	○	○	○	○	○	○	○	○
Credit Condition	○	○	○	○	○	○	○	○	○
Credit Condition Type	○	○	○	○	○	○	○	○	○
Credit Criteria	○	○	○	○	○	○	○	○	○
Credit Decision	○	○	○	○	○	○	○	○	○
Credit Reference	○	○	○	○	○	○	○	○	○
Credit Report	○	○	○	○	○	○	○	○	○

Data Security & Audit

Leasepath's Cloud Infrastructure uses all the latest facility infrastructure, on-premise access, software, user, and database security. No access to facilities, function, or data is possible unless you allow it, and when you do, Leasepath tracks who, what, and when data was updated so you can audit it.