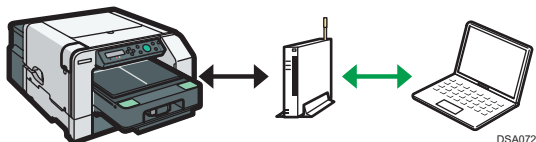


RICOH Ri 100 Notes for Wireless LAN Users

This manual explains how to connect the machine to the network via a wireless LAN interface in the infrastructure mode.

In the infrastructure mode, communication is established via a wireless LAN access point.



★ Important

- Ad hoc mode is not supported.
- Ethernet and wireless LAN settings cannot be enabled at the same time.

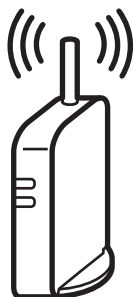
Checking Your Wireless Network Environment

Before using the wireless LAN, configure the following settings and make the check.

1. **Before configuring the wireless LAN settings, configure the machine's IP address or make DHCP enabled.**

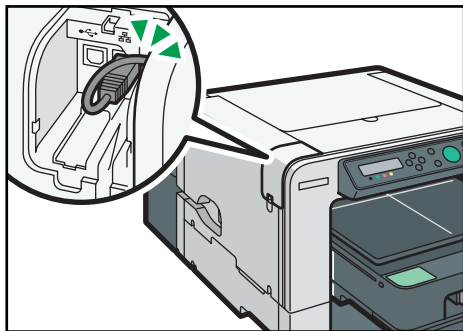
For details about configuring the machine's IP address, see "Preparing for Printing", Operating Instructions ⑧.

2. **Check that the access point is operating.**



CHV600

3. Plug the wireless LAN cable into the Ethernet port before configuring the wireless LAN settings.

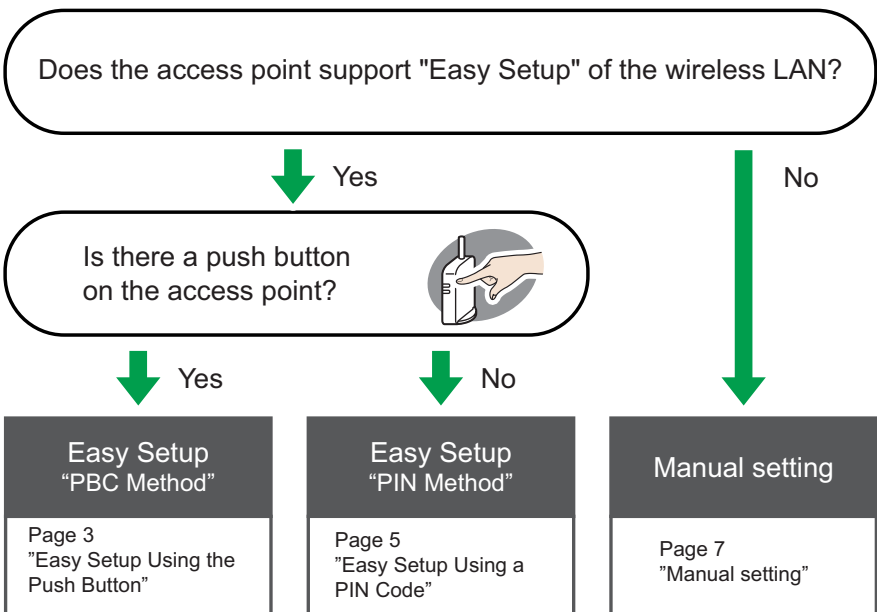


DSA343

Selecting the Configuration Method

The configuration method depends on the access point being used.

"Easy Setup" is a function for automatically configuring the wireless LAN settings. The actual name of the function may vary depending on the access point being used. See the access point manual.



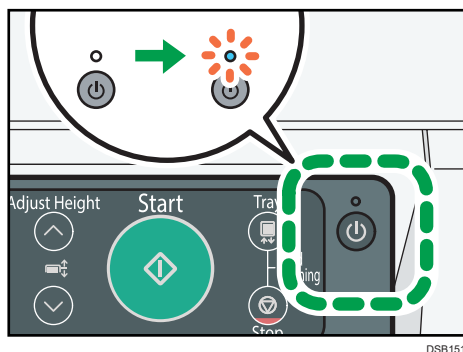
CHV626

Reference

- Manual setting: Page 7 "Configuring Settings Using Web Image Monitor"
- Manual setting: Page 12 "Configuring Settings Using the Control Panel"

Easy Setup Using the Push Button

1. Turn the machine on.



2. Press the [▼/Menu] key.
3. Press the [▲] or [▼/Menu] key to display the [Host Interface] menu, and then press the [#Enter] key.

<Menu>
Host Interface

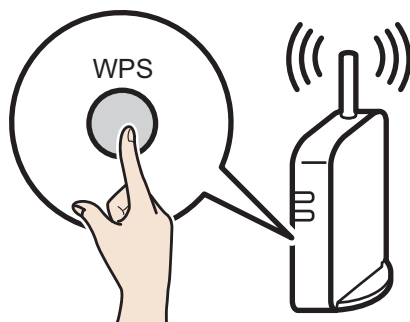
4. Press the [▲] or [▼/Menu] key to display [Wireless LAN], and then press the [#Enter] key.

<Host Interface>
Wireless LAN

5. Press the [▲] or [▼/Menu] key to select [Easy Setup], and then press the [#Enter] key.

<Wireless LAN>
Easy Setup

6. Press the WPS button on the access point.



7. Press the [▲] or [▼/Menu] key to select [PBC Method], and then press the [#Enter] key.

<Easy Setup>
PBC Method

If the access point cannot be detected within 120 seconds, the search session expires.

If the connection attempt has failed, press the [#Enter] key again. If the problem persists, check whether the access point is working properly.

Configuration is complete when connection to the access point is confirmed.

8. **After you have made all the settings, press the [Escape] key.**
9. **Print the configuration page to check whether the machine has successfully connected to the access point.**

Load the print media in the cassette.

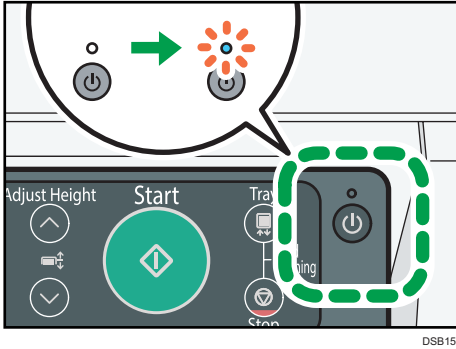
If the wireless LAN signal is reported as being unavailable (0%) on the configuration page, the machine is not connected to the access point.

■ **How to print the configuration page**

the [▼/Menu] key ▶ [List/Test Print] ▶ [Config. Page] ▶ the [#Enter] key

Easy Setup Using a PIN Code

1. Turn the machine on.



2. Press the [▼/Menu] key.
3. Press the [▲] or [▼/Menu] key to display the [Host Interface] menu, and then press the [#Enter] key.

<Menu>
Host Interface

4. Press the [▲] or [▼/Menu] key to display [Wireless LAN], and then press the [#Enter] key.

<Host Interface>
Wireless LAN

5. Press the [▲] or [▼/Menu] key to select [Easy Setup], and then press the [#Enter] key.

<Wireless LAN>
Easy Setup

6. Press the [▲] or [▼/Menu] key to select [Display PIN], and then press the [#Enter] key.

<Easy Setup>
Display PIN

7. Check the machine's PIN.

8. Enter the machine's PIN on the access point web page.



CHV609

For details, see the manual supplied with the wireless LAN access point.

9. Execute WPS (PIN system) from the access point's web page.
10. Press the [Escape] key.
11. Press the [▲] or [▼/Menu] key to select [PIN Method], and then press the [#Enter] key.

<Easy Setup>
PIN Method

If the connection attempt has failed, press the [#Enter] key again. If the problem persists, check whether the access point is working properly.
Configuration is complete when connection to the access point is confirmed.

12. After you have made all the settings, press the [Escape] key.
13. Print the configuration page to check whether the machine has successfully connected to the access point.

Load the print media in the cassette.

If the wireless LAN signal is reported as being unavailable (0%) on the configuration page, the machine is not connected to the access point.

■ How to print the configuration page

the [▼/Menu] key ► [List/Test Print] ► [Config. Page] ► the [#Enter] key

Manual Setting

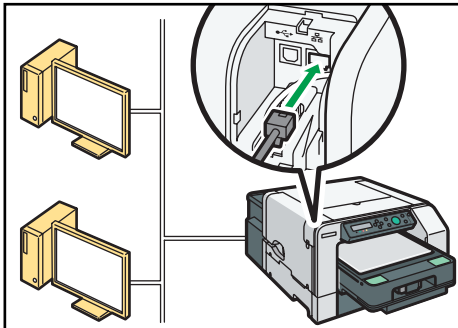
If you cannot confirm the settings of the access point being used or the access point does not support WPS, configure the wireless LAN settings manually.

You can configure the settings using Web Image Monitor or the control panel. This manual mainly explains configuration using Web Image Monitor.

Configuring Settings Using Web Image Monitor

★ Important

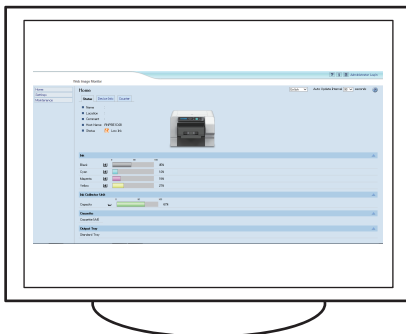
- Connect the machine and computer with an Ethernet cable before configuring the settings.



DSA345

- Check the security method employed by the access point being used.
- Check the machine's IP address.
the [▼/Menu] key ► [Host Interface] ► [Network Setup] ► [IPv4 Address]

1. **Launch the Web browser.**
2. **In the address bar, enter "http://(machine's IP address or host name)".**
3. **Click [Administrator Login].**



DSB201

A dialog box for entering the user name and password appears.

4. **Enter the user name and password, and then click [OK].**

If this is the first time to log in, enter "admin" as the user name and leave the password blank.

5. In the menu area, click [Settings].
6. Click [Wireless LAN Settings].
7. Specify the wireless LAN settings.

■ If the security method is WEP

The screenshot shows the 'Wireless LAN Settings' page. It is divided into three main sections: 'Wireless LAN Settings', 'WEP Settings', and 'WPA Settings'.

1. An arrow points to the 'SSID' text input field in the 'Wireless LAN Settings' section.

2. An arrow points to the 'Security Method' dropdown menu, which is currently set to 'WEP'.

3. A bracket groups the 'New WEP Key' and 'Confirm WEP Key' text input fields in the 'WEP Settings' section, with an arrow pointing to the 'Apply' checkbox next to them.

Wireless LAN Settings

- Network: Active
- Version: 0.0
- MAC Address: [Redacted]
- Wireless Signal Status: Unavailable(0%)
- SSID: [Text Input Field]
- Security Method: WEP

WEP Settings

- WEP Key Status: Not Set
- New WEP Key: [Text Input Field] ☐ Apply
- Confirm WEP Key: [Text Input Field]

WPA Settings

- WPA Encryption Method: ☐ TKIP ☒ CCMP
- WPA Authentication Method: WPA2-PSK
- PSK Status: Already Set
- PSK: [Text Input Field] ☐ Apply
- Confirm PSK: [Text Input Field]
- User Name: [Text Input Field]
- EAP Type: EAP-TLS
- WPA Client Certificate Status: None
- Certificate Validity Period Error: Certificate validity period unknown.
- Password: [Text Input Field] ☐ Apply
- Confirm Password: [Text Input Field]

DSB202

1. Enter the network name of the access point.
2. Select [WEP].
3. Enter the password for the access point, and then select the [Apply] check box.

■ If the security method is WPA

The screenshot shows the 'Wireless LAN Settings' page. In the 'Wireless LAN Settings' section, the 'Security Method' dropdown is set to 'WPA'. Two black lines with numbers '1' and '2' point to the 'SSID' and 'Security Method' fields respectively. Below this is the 'WEP Settings' section, followed by the 'WPA Settings' section. In the 'WPA Settings' section, 'WPA Encryption Method' has 'TKIP' selected and 'WPA Authentication Method' is set to 'WPA2-PSK'. Other fields like 'PSK', 'User Name', 'EAP Type', 'WPA Client Certificate Status', 'Certificate Validity Period Error', 'Password', and 'Confirm Password' are also visible.

Wireless LAN Settings

- Network: Active
- Version: 0.0
- MAC Address: [Greyed out]
- Wireless Signal Status: Unavailable(0%)
- SSID: [Empty text box]
- Security Method: WPA

WEP Settings

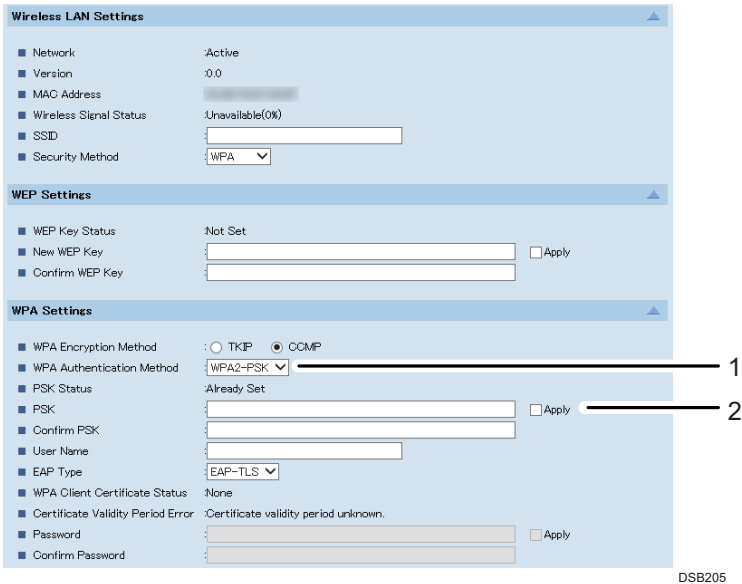
- WEP Key Status: Not Set
- New WEP Key: [Empty text box] ☐ Apply
- Confirm WEP Key: [Empty text box]

WPA Settings

- WPA Encryption Method: ☐ TKIP ☒ CCMP
- WPA Authentication Method: WPA2-PSK
- PSK Status: Already Set
- PSK: [Empty text box] ☐ Apply
- Confirm PSK: [Empty text box]
- User Name: [Empty text box]
- EAP Type: EAP-TLS
- WPA Client Certificate Status: None
- Certificate Validity Period Error: Certificate validity period unknown.
- Password: [Empty text box] ☐ Apply
- Confirm Password: [Empty text box]

1. Enter the network name of the access point.
2. Select [WPA].

- If the WPA authentication method is WPA-PSK or WPA2-PSK



Wireless LAN Settings

- Network: Active
- Version: 0.0
- MAC Address: [Redacted]
- Wireless Signal Status: Unavailable(0%)
- SSID: [Redacted]
- Security Method: WPA

WEP Settings

- WEP Key Status: Not Set
- New WEP Key: [Redacted] ☐ Apply
- Confirm WEP Key: [Redacted]

WPA Settings

- WPA Encryption Method: ☐ TKIP ☒ COMP
- WPA Authentication Method: WPA2-PSK 1
- PSK Status: Already Set
- PSK: [Redacted] ☐ Apply 2
- Confirm PSK: [Redacted]
- User Name: [Redacted]
- EAP Type: EAP-TLS
- WPA Client Certificate Status: None
- Certificate Validity Period Error: Certificate validity period unknown.
- Password: [Redacted] ☐ Apply
- Confirm Password: [Redacted]

DSB205

1. Select [WPA-PSK] or [WPA2-PSK].
2. Enter the PSK (Pre-Shared Key), and then select the [Apply] check box.

Configure other settings if needed.

- If the WPA authentication method is WPA or WPA2

Wireless LAN Settings

- Network: Active
- Version: 0.0
- MAC Address: [Redacted]
- Wireless Signal Status: Unavailable(0%)
- SSID: [Redacted]
- Security Method: Inactive

WEP Settings

- WEP Key Status: Not Set
- New WEP Key: [Redacted] ☐ Apply
- Confirm WEP Key: [Redacted]

WPA Settings

- WPA Encryption Method: ☐ TKIP ☒ COMP
- WPA Authentication Method: WPA (1)
- PSK Status: Already Set
- PSK: [Redacted] ☐ Apply
- Confirm PSK: [Redacted]
- User Name: [Redacted] (2)
- EAP Type: EAP-TLS (3)
- WPA Client Certificate Status: None
- Certificate Validity Period Error: Certificate validity period unknown.
- Password: [Redacted] ☐ Apply
- Confirm Password: [Redacted] (4)

DSB204

1. Select [WPA] or [WPA2].
2. Enter the user name for Extensible Authentication Protocol (EAP).
3. Select the EAP authentication type.
4. Enter the password for Protected Extensible Authentication Protocol (PEAP), and then select the [Apply] check box.
You can configure this setting if [EAP Type] is set to [PEAP].

Configure other settings if needed.

8. Click [OK].
9. Click [Administrator Logout].
10. Turn the machine off.
11. Remove the Ethernet cable, and then connect the wireless LAN cable.
12. Turn the machine on.
Setting is complete.

Configuring Settings Using the Control Panel

★ Important

- For details, see Notes for Wireless LAN Users on the manufacturer's Web site or the Operating Instructions.

1. Configure the wireless LAN settings.

the [▼/Menu] key ▶ [Host Interface] ▶ [Wireless LAN] ▶ [Security Method]