

## WATER SYSTEMS & VENTILATION

BILGE PUMPS · AERATOR PUMPS · SHOWER SUMP PUMPS  
PORTABLE PUMPS · BILGE PUMP SWITCHES · BLOWERS · VENTS  
THRU-HULL & EXHAUST FITTINGS · DRAIN PLUGS & ACCESSORIES





# WATER SYSTEMS / VENTILATION

## Complete Selection

A complete selection of pumps and blowers are available for fishing boats, runabouts, cruisers, yachts, and commercial boats. Attwood bilge pumps and blowers are tested and approved as standard equipment by leading boat manufacturers.

## Bilge and Aerator Pumps

The Heavy-Duty 1700 and 2000 bilge pumps have established Attwood into the commercial market with value-loaded industrial-duty features and performance.

The Tsunami series of cartridge style bilge and aerator pumps are engineered for higher performance in the most service friendly design imaginable. Their cartridge style allows quick and easy replacement without the need to remove hoses or mounting bases.

## Automatic Bilge Pumps

All boats over 20' long with sleeping accommodations (excluding fold-out cockpit seats) should use automatic bilge pump systems. Non-automatic pumps drawing 12-amps or less can easily convert to automatic operation with an Attwood Automatic Float Switch (part number 4201 or 4202).

Our Sahara Series automatic pumps are available in 500, 750 and 1100 gph capacity models.

Bilge pumps are designed to exhaust standing water only. They are not intended to prevent rapid accumulation of on-board water due to rough weather, hull damage, and/or other unsafe navigational conditions.

**Note:** Bilge and aerator pumps must be lower than the source of water for priming.

## Turbo In-Line Blowers

Attwood offers ventilation equipment and accessories featuring the revolutionary, patented Turbo In-Line Blowers for 3"- and 4"-diameter systems. Turbo blowers are the most dependable, efficient, and powerful in-line blowers on the market, designed using aerospace technology. The Turbo line also features the industry's first water-resistant blower models, with durability proven in rigorous moisture tests and years of success in the field. Attwood offers Turbo water-resistant blowers with an unprecedented three-year limited warranty, and a one-year limited warranty for standard models.

## Certification, Standards, and Listings

All Attwood pumps meet or exceed the following U.S. and international certificates and standards:

- ABYC H-22
- ISO 8846, 8849 Marine
- U.S. Coast Guard Rule, Title 33CFR sections 183.410 and 33CFR 183.425
- NMMA "As Approved Listing"
- IMCI (CE)

## Certifications, Standards and Listings

Attwood in-line blowers meet or exceed the following U.S. and international certificates and standards:

- ABYC-H2; ISO 9097
- U.S. Coast Guard Rules, Title 33 CFR sections 183.410, and 183.610 (b)
- Tested to ANSI/AMCA (210-85) and ANSI/ASHRAE (51-1985) standards
- NMMA "As Approved Listing"
- IMCI (CE)

## Choice of Electrical Connectors

Attwood pumps feature several wire attachment styles to adapt to your boat's wiring harness. Standard wire on all pumps are tinned and caulked 16-gauge for butt connection

Special connectors are available on special order by contacting your Attwood representative. Minimum order quantity is 250:

- Packard Connector
- Packard Connector, Water-Resistant
- Amp Connector
- Amp Connector, Water-Resistant
- Deutsch Connector
- Quick Silver Connector



Standard



2-Way Molded (MP1)



Packard Connector



Packard Connector,  
Water-Resistant



Amp Connector



Amp Connector,  
Water-Resistant



Quick Silver  
Connector



Deutsch  
Connector



## ALL-IN-ONE PUMP

- FAST, EASY INSTALLATION
- HIGH-EFFICIENCY MOTOR
- DEPENDABLE INTERNAL FLOAT SWITCH (CONTAINS NO MERCURY)
- 3-YEAR WARRANTY

## DESIGN FEATURES

Reliable mechanical switch for long and dependable service. Contains no toxic mercury.

Molded three-wire seal is permanently fused to wire insulation to prevent leak paths.

Wiring is tinned and caulked for corrosion resistance and to eliminate wicking and water damage.

Test knob allows for easy and immediate operational check without disassembly.

Non-restrictive float movement avoids binding in "on" position or "off" position.

Larger, more effective filter area resists clogging.

Pump/Switch housing attaches to filter base with handy side-lock snaps for security and quick, one-hand removal for easy cleaning.

Compact size and low-profile design allow installation in tight places.

High-efficiency, permanent magnet motor uses composite brushes and permanently lubricated bearings for longer life.

The free flow of water around the motor housing keeps motor cool for extended life.

316 stainless steel motor shaft for saltwater corrosion resistance.

Patented steel reinforced motor shaft seal ensures perfect alignment of shaft and seal, prevents leaks due to misalignment of motor shaft.

Durable impeller is made of tough, high-impact, glass-filled polyester.

## Durable Design, Compact Size

An automatic-switch bilge pump is a great convenience for any size boat, and all vessels 20' and over with sleeping accommodations must have one. The Sahara is the perfect answer!

Everything is contained in one compact package — pump, wire seals, strainer, and mercury-free switch. So it installs quickly and easily in tight spaces.

From its stainless steel shaft to caulked and tinned wiring, everything is designed for durability! Water flows around the pump chamber and absorbs motor heat to increase pump efficiency and service life. The high-efficiency motor uses best-quality bearings and state-of-the-art brushes, alloys and magnets. The new shaft seal perfectly centers motor shaft to prevent leaks and wear. And the mechanical switch is simple and reliable. *Contains no mercury.*

*Available in three popular flow capacities 500, 750, and 1100 GPH.  
Patented*



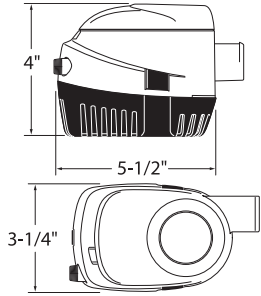
# WATER SYSTEMS / VENTILATION

## Sahara Automatic Bilge Pumps

Sahara Bilge Pumps include 36" lengths of 16-gauge tinned copper wire. Wire is caulked to prevent water from wicking through insulation jacket. All materials and components are state-of-the art. Permanent-magnet motor, stainless steel shaft, and steel-reinforced seal assure powerful, durable performance. All models backed by Attwood's 3-Year Warranty!

*Mercury-Free Design.*

*Does not harm the environment!*



### Sahara Pump NMMA Numbers

Part No.	NMMA No.	IMCI (CE) Certificate No.
4505 Series	090085	PATT039
4507 Series	090090	PATT038
4508 Series	2456897	PATT041
4511 Series	090095	PATT040

### Specifications

Model No.	Rated Voltage	GPH Output @ Design Voltage 13.6 VDC						GPH Output @ Nominal Voltage 12.0 VDC					
		Amp Draw	0 ft.	3.3 ft.	6.7 ft.	Max. Head		Amp Draw	0 ft.	3.3 ft.	6.7 ft.	Max. Head	
S500	12	1.5	500	350	200	9 ft.		1.2	450	300	150	8 ft.	3-amp
S750	12	2.8	750	625	450	16 ft.		2.5	660	480	345	12 ft.	5-amp
S750	24	1.5	750	625	450	16 ft.		1.2	660	480	345	12 ft.	2-amp
S1100	12	4	1,100	973	750	11 ft.		3.4	1070	820	615	9 ft.	6-amp

## S500 Pump

S500 has plenty of pumping power for most jobs. 500 GPH at open flow, 350 GPH at 3.3' head. Draws only 1.5-amps at open flow!

Model No.	Rated Voltage	Hose Size	Wire / Connector	Bulk Packaging	Aftermarket Packaging*
S500	12-Volts	3/4" I.D.	36" wire	4505-1	4505-7
S500 with Stainless Steel Strainer	12-Volts	3/4" I.D.	36" wire	4505S1	—

Listed GPH is measured at design voltage of 13.6 VDC.

\*Clam Shell

**new**



S500

## S750

S750 is sized for larger recreational boats. Our most powerful 3/4"-outlet automatic pump. 750 GPH at open flow, 625 GPH at 3.3' head. 3/4" hose outlet.

Model No.	Rated Voltage	Hose Size	Wire / Connector	Bulk Packaging	Aftermarket Packaging*
S750	12-Volts	3/4" I.D.	36" wire	4507-1	4507-7
S750 with stainless steel strainer	12-Volts	3/4" I.D.	36" wire	4507S1	—
S750	24-Volts	3/4" I.D.	36" wire	4508-1	—

Listed GPH is measured at design voltage of 13.6 VDC.

\*Clam Shell

**new**



S750

## S1100

S1100 is our most powerful and efficient automatic pump. High capacity for larger boats and yachts. 1100 GPH at open flow, 973 GPH at 3.3' head. 1 1/8" hose outlet.

Model No.	Rated Voltage	Hose Size	Wire / Connector	Bulk Packaging	Aftermarket Packaging*
S1100	12-Volts	1 1/8" I.D.	36" wire	4511-1	4511-7
S1100 with stainless steel strainer	12-Volts	1 1/8" I.D.	36" wire	4511S1**	—
S1100	24-Volts	1 1/8" I.D.	36" wire	4512-1**	—

Listed GPH is measured at design voltage of 13.6 VDC.

\*\* Available January 2009

\*Clam Shell

**new**

**new**



S1100

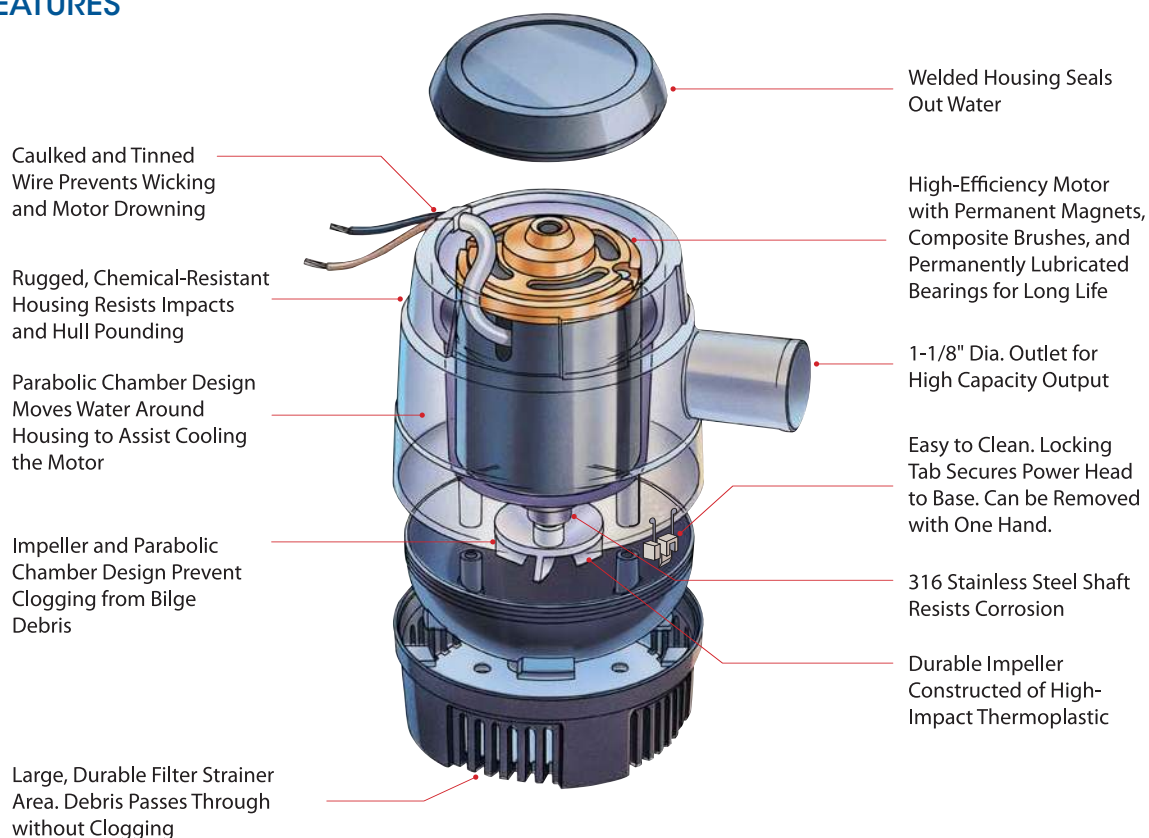




## WORK HORSE PUMPS

- FOR COMMERCIAL WORK BOATS & YACHTS
- 3-YEAR WARRANTY FOR PLEASURE BOATS
- HEAVY-DUTY MOTOR DESIGN
- 1700 TO 2000 GPH

## DESIGN FEATURES



## High Output

Our Heavy-Duty pumps are designed for commercial/work boats, cruisers, center consoles, and yachts, and are accurately and honestly rated according to today's ABYC standards. The Model 2000 can move an incredible 2,000 gph at open flow! The Heavy-Duty 1700 offers superior performance and value, and can replace either 1500 gph or 2000 gph competitive pumps. These are commercial-duty pumps with all the attributes the professional boater wants.

## Long Life

HD-Series pumps are designed for reliability and long life. The powerhead with integrated hose outlet locks to its base in 90° increments for easy hose routing and installation. The state-of-the-art motor design features a permanent magnet motor with composite brushes and a coiled spring design. Motors use long brushes for increased life-span. Two independent impeller shaft seals keep the motor dry and act as a reservoir for shaft lubricant. The parabolic pump chamber circulates cool water around the motor for lower temperature operation and it expels debris without clogging the impeller.

*Atwood Heavy-Duty pumps deliver the best combination of performance, and work life for your money.*



# WATER SYSTEMS / VENTILATION

## Heavy-Duty Bilge Pumps

All Heavy-Duty Bilge Pumps include 36" lengths of 16-gauge caulked and tinned copper wire. The amp draw listed in the chart below is rated at open flow and design voltage. All have an outlet for 1½" I.D. hose.

### HD Bilge Pumps NMMA and IMCI Certificate Numbers

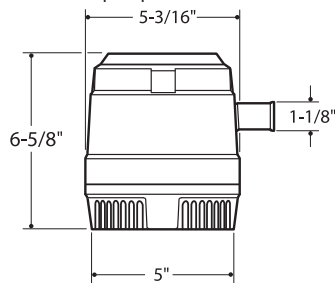
Part No.	NMMA No.	IMCI (CE) Certificate No.
4030 Series	90888	PATT032
4040 Series	090070, 71	PATT033
4060 Series	090074, 75	PATT035
4070 Series	090076, 77	PATT036

### HD Bilge Pumps NMMA and IMCI Certificate Numbers

Model No.	Rated Voltage	GPH Output @ Design Voltage Amp Draw	13.6 VDC				Amp Draw	GPH Output @ Design Voltage Max. Head				12 VDC Fuse Size	Hose Size
			0 ft.	3.3 ft.	6.7 ft.	Max. Head		0 ft.	3.3 ft.	6.7 ft.	Max. Head		
HD1700	12	6	1,700	1,300	950	12 ft.	5.2	1,500	1,000	850	11 ft.	10-amp	1½" I.D.
	24	3.5	1,700	1,400	950	12 ft.	3	1,500	1,000	850	11 ft.	5-amp	1½" I.D.
HD2000	12	8	2,000	1,580	1,230	17 ft.	7	1,850	1,500	1,200	16 ft.	12-amp	1½" I.D.
	24	5	2,000	1,700	1,200	17 ft.	4.5	1,850	1,580	1,230	16 ft.	7-amp	1½" I.D.

## HD1700

The perfect upgrade from 1500 GPH rated pumps...especially older, over-rated designs. Easily and affordably replaces 2000 GPH rated pumps. Delivers a true 1700 GPH at open flow while drawing less than 7-amps.



Model No.	Rated Voltage	Wire / Connector	Bulk Packaging	Aftermarket Packaging*
HD1700	12-Volt, CE rated	36" wire	4030-1	4030-4
	24-Volt, CE rated	36" wire	4040-1	—

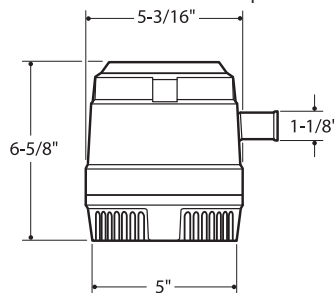
\* Individual Carton



HD1700

## HD2000

Attwood's highest capacity bilge pump! Ball-bearing design provides for cooler motor operation and longer life. Delivers over 2000 GPH at open flow while drawing less than 10-amps.



Model No.	Rated Voltage	Wire / Connector	Bulk Packaging	Aftermarket Packaging*
HD2000	12-Volt, CE rated	36" wire	4060-1	4060-4
	24-Volt, CE rated	36" wire	4070-1	—

\* Individual Carton



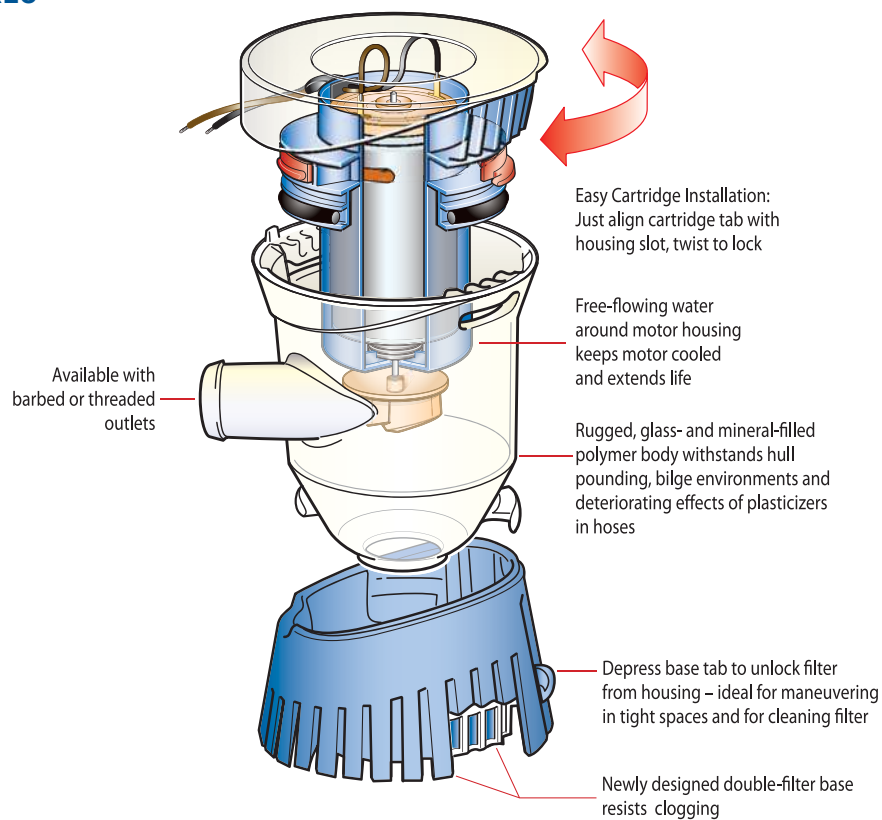
HD2000



## OUTPUT & PERFORMANCE

- NO BRACKETS REQUIRED
- COOLER-RUNNING MOTORS, PREMIUM MATERIALS, WATERTIGHT SEALS AND WATERPROOF WIRING
- ONE-HAND ACCESS
- CARTRIDGES ARE REPLACEABLE AND INTERCHANGEABLE

## DESIGN FEATURES



## Proven Performance

More power! That's the number one request Attwood receives from boat-builders, dealers and boaters alike. The Tsunami Series is our answer: Three high-performance bilge pumps that move water at output capacities of 500 gph, 800 gph and 1200 gph. With their innovative engineering and compact design, Tsunami pumps deliver high output from a small package.

## Built To Last

Tsunami pumps are durable and designed to last, too. Our efficient design circulates water around the pump motor housing, helping to absorb the heat given off by the operating motor. We use the most advanced material available, including the best quality bearings and state-of-the-art brushes, alloys and magnets. Our patented shaft seal centers directly on the motor shaft, preventing leaks caused by misalignment. Our exclusive molded two-wire seal is permanently fused to the insulation to prevent a leak path. And our wiring is caulked and tinned to eliminate wicking, prevent water damage and resist corrosion.

*Patented.*

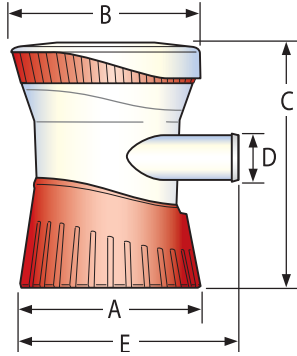
*Three Tsunami Bilge Series models available for every recreational bilge need, from compact 500 to the powerful 1200 — Plus the Tsunami Aerator Series...see page 11 for more details.*



# WATER SYSTEMS / VENTILATION

## Tsunami Series Bilge Pumps

No mounting brackets necessary. Three Year Warranty.



### Tsunami NMMA and IMCI Certificate Numbers

Part No.	NMMA No.	IMCI (CE) Certificate No.
4606 Series	2456898	PATT042
4608 Series	2456899	PATT043
4609 Series	2456900	PATT044
4612 Series	2456901	PATT046
4613 Series	2456902	PATT045

### Tsunami Series Pump Dimensions

Model	A	B	C	D	E
T500	2 <sup>3</sup> / <sub>4</sub> "	2 <sup>7</sup> / <sub>8</sub> "	3 <sup>5</sup> / <sub>8</sub> "	3/4" I.D.	3 <sup>1</sup> / <sub>8</sub> "
T800	3 <sup>1</sup> / <sub>8</sub> "	3 <sup>1</sup> / <sub>4</sub> "	4 <sup>3</sup> / <sub>8</sub> "	3/4" I.D.	3 <sup>1</sup> / <sub>2</sub> "
T1200	3 <sup>1</sup> / <sub>8</sub> "	3 <sup>1</sup> / <sub>4</sub> "	4 <sup>3</sup> / <sub>8</sub> "	1 <sup>1</sup> / <sub>8</sub> " I.D.	3 <sup>3</sup> / <sub>4</sub> "

### Sahara Pump NMMA Numbers

Model No.	Rated Voltage	Amp Draw	GPH Output @Design Voltage 13.6 VDC					Amp Draw	GPH Output @Nominal Voltage 12.0 VDC					Hose Size
			0 ft.	3.3 ft.	6.7 ft.	Max. Head	0 ft.		3.3 ft.	6.7 ft.	Max. Head	Fuse Size		
T500	12	1.7	500	400	230	8 ft.	1.3	475	330	125	7 ft.	3	3/4" I.D.	
T800	12	3	800	660	540	13 ft.	2.5	760	600	400	11 ft.	4	3/4" I.D.	
T800	24	1.3	800	660	540	13 ft.	1.1	760	600	400	11 ft.	2	3/4" I.D.	
T1200	12	3.5	1200	900	700	11 ft.	3	1100	810	480	9 ft.	5	1 1/8" I.D.	
T1200	24	1.5	1200	900	700	11 ft.	1.3	1100	810	480	9 ft.	2	1 1/8" I.D.	

Model No.	Rated Voltage	Wire / Connector		Bulk Packaging	Aftermarket Packaging*
TSUNAMI - BILGE PUMPS					
T500	Barbed - 3/4"	12-Volts	36" wire	4606-1	4606-7
	Threaded - 3/4" Δ	12-Volts	36" wire	4606TH1	—
T800	Barbed - 3/4"	12-Volts	36" wire	4608-1	4608-7
	Threaded - 3/4" Δ	12-Volts	36" wire	4608TH1	—
	Barbed - 3/4"	24-Volts	36" wire	4609-1	—
T1200	Barbed - 1 1/8"	12-Volts	36" wire	4612-1	4612-7
T1200	Barbed - 1 1/8"	24-Volts	36" wire	4613-1	—
TSUNAMI - CARTRIDGE MOTOR REPLACEMENTS					
T500		12-Volts	36" wire	4620-1	4620-6
T800		12-Volts	36" wire	4622-1	4622-6
		24-Volts	36" wire	4623-1	—
T1200		12-Volts	36" wire	4624-1	4624-6
		24-Volts	36" wire	4625-1	—

<sup>Δ</sup>Threaded outlet permits the use with 90° fittings or Flow-Rite™ connectors.

\* -7 = Clamshell, -6 = Blister Card

new

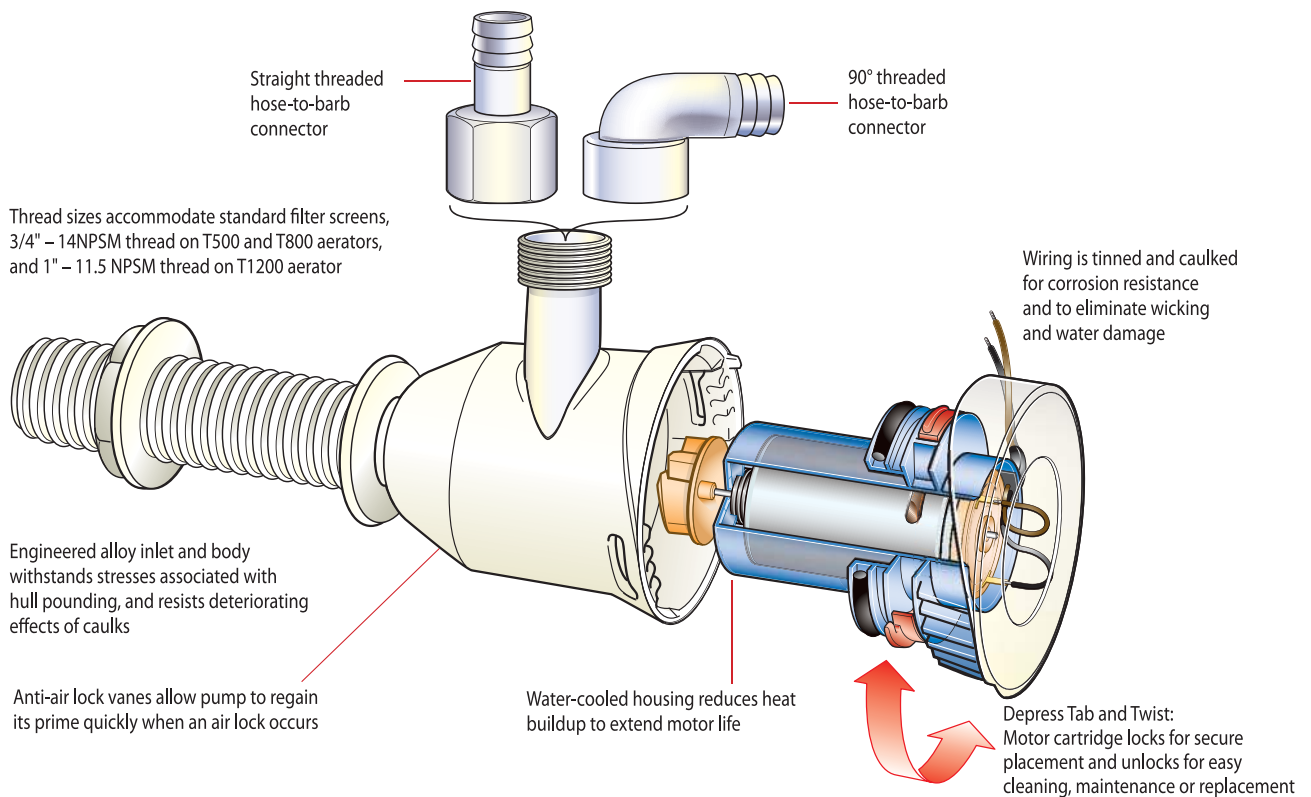




## OUTPUT & PERFORMANCE

- MOVES MORE WATER AND OXYGEN INTO LIVEWELL TANKS TO KEEP FISH ACTIVE
- COOLER-RUNNING MOTORS, PREMIUM MATERIALS, WATERTIGHT SEALS AND WATERPROOF WIRING
- CARTRIDGES ARE REPLACEABLE AND INTERCHANGEABLE

## DESIGN FEATURES



## Proven Performance

More power! That's the number one request Attwood receives from boat-builders, dealers and boaters alike. The Tsunami Series is our answer: Three high-efficiency aerator pumps that move water at output capacities of 500 gph, 800 gph and 1200 gph. With their innovative engineering and compact design, Tsunami pumps deliver high output from a small package.

*Aerator Applications: Livewell Recirculation, Mounted; Through Transom, Remote Mounted and Seacock Mounted.*

## Built To Last

Tsunami pumps are durable and designed to last, too. Our efficient design circulates water around the pump motor housing, helping to absorb the heat given off by the operating motor. We use the most advanced material available, including the best quality bearings and state-of-the-art brushes, alloys and magnets. Our patented shaft seal centers directly on the motor shaft, preventing leaks caused by misalignment. Our exclusive molded two-wire seal is permanently fused to the insulation to prevent a leak path. And our wiring is caulked and tinned to eliminate wicking, prevent water damage and resist corrosion.

*Patented*

*Three Tsunami Aerator Series models available for every recreational aerator need, from compact 500 to the big, powerful 1200 — Plus the Tsunami Bilge Series...see page 9 for more details.*

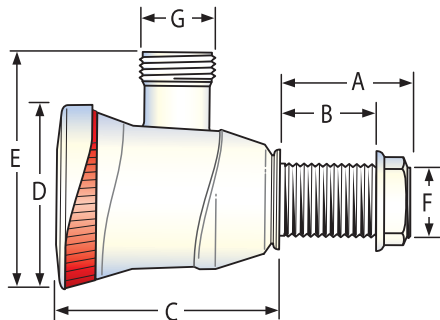


# WATER SYSTEMS / VENTILATION

## Tsunami Series Aerator Pump

No mounting brackets necessary. Three Year Warranty.

Ski and wakeboard boat builders will profit from the extreme performance of the T1200 Tsunami aerator. With its bold unrestricted 1 $\frac{1}{8}$ " discharge outlet it literally blasts torrents of water into ballast tanks to quickly provide just the right balance for that perfect pull. Any other pump would just leave you in the wake.



### Tsunami Series Pumps NMMA and IMCI Certificate Numbers

Part No.	NMMA No.	IMCI (CE) Certificate No.
4640 Series	2456903	IGPATT002
4650 Series	2456904	IGPATT003
4660 Series	2456905	IGPATT004

### Tsunami Series Pump Dimensions

Model	Application	A	B	C	D	E	F	G
T500	Thru-Hull	3 $\frac{1}{2}$ " or 1 $\frac{1}{2}$ "	3" or 1"	3 $\frac{1}{4}$ "	2 $\frac{7}{8}$ "	3 $\frac{5}{8}$ "	3/4-14 NPSM	3/4-14 NPSM
	Seacock	1 $\frac{1}{2}$ "	1"				3/4-14 NPT	3/4-14 NPSM
T800	Thru-Hull	3 $\frac{1}{2}$ " or 1 $\frac{1}{2}$ "	3" or 1"	3 $\frac{7}{8}$ "	3 $\frac{1}{4}$ "	4"	3/4-14 NPSM	3/4-14 NPSM
	Seacock	1 $\frac{1}{2}$ "	1"				3/4-14 NPT	3/4-14 NPSM
T1200	Thru-Hull	3 $\frac{1}{2}$ " or 1 $\frac{1}{2}$ "	3" or 1"	4"	3 $\frac{1}{4}$ "	4 $\frac{1}{8}$ "	1 $\frac{3}{8}$ -12 UNF	1 $\frac{3}{8}$ -12 UNF
	Seacock	1 $\frac{1}{2}$ "	1"				1-11 $\frac{1}{2}$ NPT	1 $\frac{3}{8}$ -12 UNF

### Specifications

Model No.	Rated Voltage	GPH Output @ Design Voltage 13.6 VDC					GPH Output @ Nominal Voltage 12.0 VDC					Fuse Size	Hose Size
		Amp Draw	0 ft.	3.3 ft.	6.7 ft.	Max. Head	Amp Draw	0 ft.	3.3 ft.	6.7 ft.	Max. Head		
T500	12	1.7	500	440	250	9 ft.	1.3	485	390	180	8 ft.	3	3/4" I.D.
T800	12	3	800	670	525	9 ft.	2.5	750	555	370	8 ft.	4	3/4" I.D.
T1200	12	3.5	1,200	840	570	9 ft.	3	1140	790	450	8 ft.	5	1 $\frac{1}{8}$ " I.D.

Model	Inlet Length & Diameter	Outlet Style & I.D. Diameter	Rated Voltage	Wire/ Connector	Bulk Packaging	Aftermarket Packaging*
TSUNAMI - AERATOR PUMPS						
T500	3 $\frac{1}{2}$ " L x 3/4"	Threaded - 3/4"	12-Volts	36" wire	4640-1	4640-7
	1 $\frac{1}{2}$ " L x 3/4"	Threaded - 3/4"	12-Volts	36" wire	4641-1	—
	1 $\frac{1}{2}$ " L x 3/4"	Threaded - 3/4"	12-Volts	36" wire used with 3/4" seacock	4643-1	4643-7
T800	3 $\frac{1}{2}$ " L x 3/4"	Threaded - 3/4"	12-Volts	36" wire	4650-1	4650-7
	3 $\frac{1}{2}$ " L x 3/4"	Threaded - 3/4"	12-Volts	36" wire	4651-1	—
	1 $\frac{1}{2}$ " L x 3/4"	Threaded - 3/4"	12-Volts	14' wire leads w/cigarette adapter	4651CIG1	—
	1 $\frac{1}{2}$ " L x 3/4"	Threaded - 3/4"	12-Volts	14' wire leads used with 3/4" seacock	4653-1	4653-7
T1200	3 $\frac{1}{2}$ " L x 1 $\frac{1}{8}$ "	Threaded - 1 $\frac{1}{8}$ "	12-Volts	36" wire	4660-1	4660-7
	3 $\frac{1}{2}$ " L x 1 $\frac{1}{8}$ "	Threaded - 1 $\frac{1}{8}$ "	12-Volts	14' wire leads w/cigarette adapter	4660CIG1	—
	1 $\frac{1}{2}$ " L x 1 $\frac{1}{8}$ "	Threaded - 1 $\frac{1}{8}$ "	12-Volts	36" wire	4661-1	—
	1 $\frac{1}{2}$ " L x 1 $\frac{5}{16}$ "	Threaded - 1 $\frac{1}{8}$ "	12-Volts	36" wire used with 1" seacock	4663-1	4663-7
TSUNAMI - CARTRIDGE MOTOR REPLACEMENTS						
T500	—	—	12-Volts	36" wire	4620-1	4620-6
T800	—	—	12-Volts	36" wire	4622-1	4622-6
	—	—	24-Volts	36" wire	4623-1	—
T1200	—	—	12-Volts	36" wire	4624-1	4624-6
	—	—	24-Volts	36" wire	4625-1	—

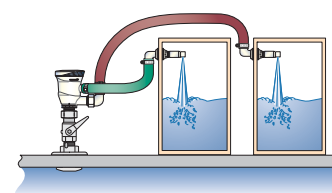
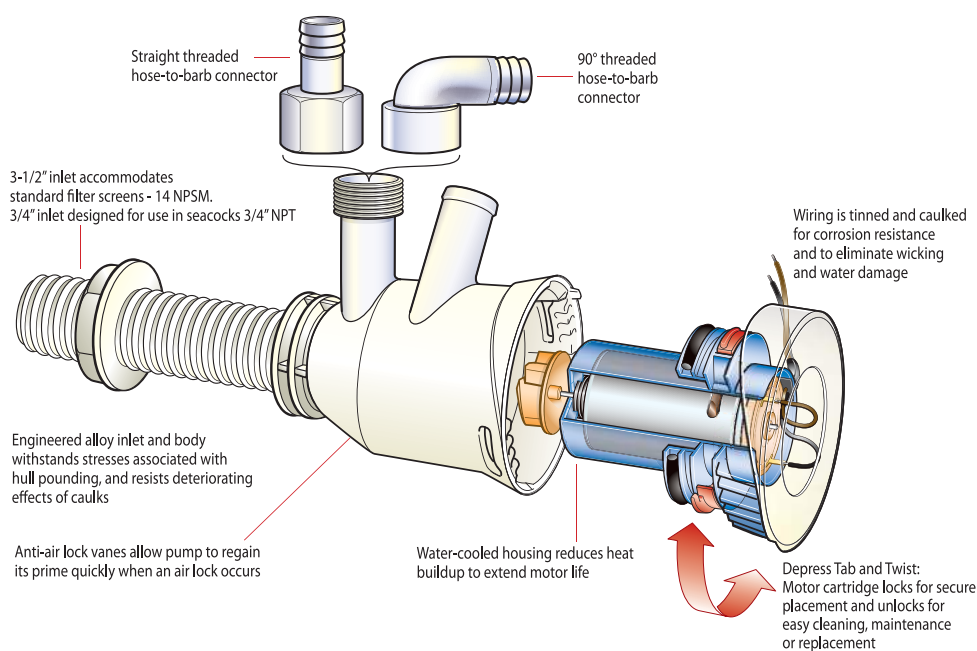
\* -6 = Blister Card, -7 = Clamshell

## OUTPUT & PERFORMANCE

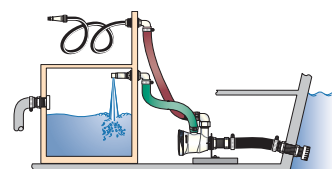
- GET TWICE THE VALUE BECAUSE THE DUAL OUTLET TSUNAMI AERATOR IS ACTUALLY A MULTIFUNCTION PUMP
- YOU GET SEPARATE OUTLETS FOR 2 LIVEWELLS
- OR RUN A LIVEWELL AND A SEPARATE LOW-PRESSURE WASHDOWN OUTLET
- 3-YEAR WARRANTY



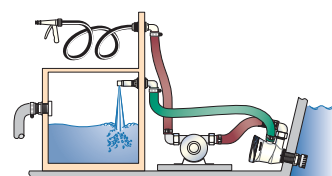
## DESIGN FEATURES



Supply Two Livewells



Rinse Hose plus Livewell



High Pressure Washdown plus Livewell

## Proven Performance

Here's Why the Tsunami Dual-Outlet Aerator is more efficient & more useful than the competitive pumps.

- Some competitive dual-port pumps offer just another hole... below the pressure chamber. To get the "dual-port" name, some simply glue a threaded housing to the bottom of an existing aerator.
- As you expect, Attwood delivers much more. The Tsunami second outlet is integrated into the pressure chamber, so it *looks* — and *pumps* — like part of the aerator.
- Beneath the standard 3/4" barbed outlet, there's a second hose-threaded outlet on the pressure housing.
- Both outlets are engineered for the precise position and angle that will deliver optimum performance.

## Our Most Versatile Aerator

The advantage of the dual outlet is that you can feed multiple applications through a single thru-hull fitting. The thru-hull can be straight thru-transom, remote or seacock-mounted.

- You can actually feed two livewells...or use the second outlet for a low pressure rinse hose
- Or use one outlet to aerate, and route the other outlet to a positive displacement pump, using it as an intake for a high-pressure washdown application.

## Best of All, It's a Tsunami...

The aerator delivers all the engineering advances of the leader in replacement cartridge pumps:

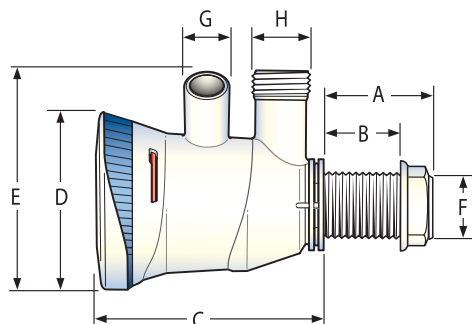
- Water-cooled motor inside a tough housing made of engineered alloy resin. Housing resists impacts, UV, chemicals, and the plasticizers used in most hoses. Even resists the acetic acid used in silicone sealants.
- Patented stainless steel reinforced motor shaft seal that ensures perfect alignment and sealing.



# WATER SYSTEMS / VENTILATION

## Tsunami Dual Outlet Aerator

- Thru-hull or seacock models available
- Three-year warranty
- Outlets: 3/4" NPSM (garden hose) 3/4" I.D. Barbed
- Inlet: 3/4"-14 NPSM



### Tsunami Series Pumps NMMA and IMCI Certificate Numbers

Part No.	NMMA No.	IMCI (CE) Certificate No.
4672	Pending	IGPATT003
4670	Pending	IGPATT003

### Tsunami Dual Outlet Dimensions

Part No.	Inlet Length	Inlet Dia.	A	B	C	D	E	F	G	H
4672	3 1/2"	3/4"	3 1/4"	3"	4 1/8"	4 1/4"	4"	3/4"-14 NPSM	3/4"-14 Barbed .554" I.D.	3/4"-14 NPSM .620" I.D.
4670	3/4"	3/4"	1 1/4"	1"	4 1/8"	4 1/4"	4"	3/4"-14 NPT	3/4"-14 Barbed .554" I.D.	3/4"-14 NPSM .620" I.D.

## Specifications

GPH Output @ Design Voltage 13.6 VDC Single outlet (with one outlet closed off)						GPH Output @ Nominal Voltage 12 VDC Single outlet (with one outlet closed off)							
Outlet	Amp Draw					Both Outlets Open						Both Outlets Open	
		0 ft.	3.3 ft.	6.7 ft.	Max Head	0 ft.	Amp Draw	0 ft.	3.3 ft.	6.7 ft.	Max. Head	0 ft.	Fuse Size
Upper	3.0	750	600	460	13'	880	2.5	670	500	390	11'	770	4.0 amp
Lower	3.0	780	620	480	13'	880	2.5	690	550	420	11'	770	4.0 amp

Model No.	Inlet Length & Diameter	Rated Voltage	Wire/ Connector	Bulk Packaging	Aftermarket Packaging*
<b>TSUNAMI - DUAL-OUTLET AERATOR PUMPS</b>					
T800	3 1/2"L x 3/4" dia.	12-Volts	36" wire	4672-1	4672-7
T800	3/4"L x 3/4" dia.	12-Volts	36" wire, use with 3/4" seacock	4670-1	4670-7
T1200**	3/4"L x 1" dia.	12-Volts	36" wire, use with 1" seacock	4680**	4680-7**
<b>TSUNAMI - ACCESSORY COMPONENTS</b>					
T800 Replacement Motor	Cartridge			4622-1	4622-6
T1200 Replacement Motor	Cartridge			4624-1	4624-6
Bracket for remote pump mounting				4122-1	—

\*\*Available in June 2009

\* -6 = Blister Card, -7 = Clamshell

new

new

new



## S3 Series Electronic Bilge Switch

**new**

S3 Series electronic bilge switch incorporates a proprietary Solid State electronic Sensing technology to detect bilge water levels and trigger pump activation. Attwood has engineered the S3 Series bilge switch to operate in any bilge water mixture consistently without failure. You can rest assured that your pump won't be exposed to continuous cycling as the S3 switch won't be fooled by splashing bilge water, chemicals, sludge build up or foam.

For added convenience, the S3 bilge switch can be mounted on the floor of the bilge directly to a stringer wall or alongside the basket of the pump without added components or brackets. Attwood has even made the S3 Series switch directly compatible with all competitive products.

With an industry leading 5 year warranty, the S3 Series bilge switch is built to last. It comes equipped with fully sealed electronics that are completely protected from water or chemical damage. More importantly, this switch is free of moving parts that can jam up, break or wear out over time.



4801

Description	Rated Voltage	Wire	Bulk Packaging	Aftermarket Packaging*
TS12	12V	36"	4801-1**	4801-7**
TS24	24V	36"	4802-1**	4802-7**

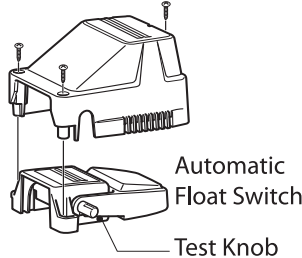
\*\* Available January 2009

\*Clam Shell

## AUTOMATIC FLOAT SWITCHES

Converts bilge pumps to fully automatic operation. Maximum amp draw is 12 amps (at 12-Volts D.C.) or 6-amps (at 24-Volts D.C.). Automatic Float Switch features a compact, low-profile design that mounts on any surface from horizontal up to a 24° angle. No large voltage drop which reduces bilge pump output like some reed switch designs. Incorporates a reliable and affordable mechanical switch that actuates pump motor at 2" water level. Wire leads do not flex or hinge with the float as on some competitive models. Integral cover dampens bilge sloshing to reduce pump cycling, and prevents debris interference. Sealed switch mechanism resists moisture, fume-ignition, and electrical shock. Contains no mercury, which is listed as a health hazard and "Persistent Toxic Substance" in over 26 states.

Float Switch Cover



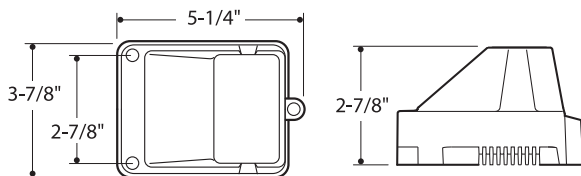
**Mercury-Free Design. Does not harm the environment!**

Float Switches IMCI Certificate Numbers

Part No.	IMCI (CE) Certificate No.
4201 Series	IGPATT001
4202 Series	IGPATT001

Float switch installs directly onto the rear slots of the V-Series pump bracket. Features a convenient test knob to test pump operation.

## Float Switch with Cover



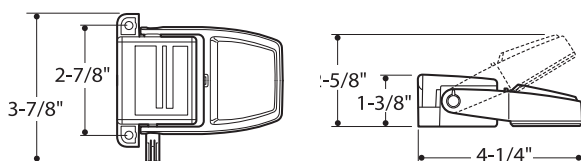
Model No.	Rated Voltage	Wire / Connector	Bulk Packaging	Aftermarket Packaging*
Float switch with cover	12- and 24-Volt, CE rated	36" wire	4201-1	4201-7
Float switch cover only	—	—	—	911844-7

\*Clam Shell



4201

## Float Switch



Model No.	Rated Voltage	Wire / Connector	Bulk Packaging	Aftermarket Packaging*
Float switch	12- and 24-Volt, CE rated	36" wire	4202-1	4202-7

\*Clamshell



4202

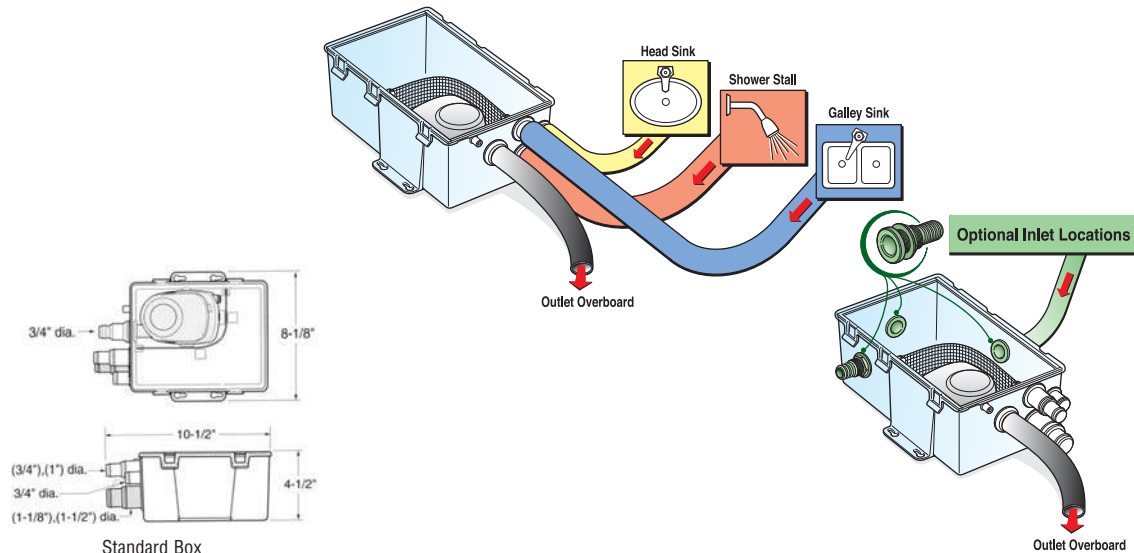




## SHOWER SUMP PUMP SYSTEM

Atwood's shower sump systems deliver the performance you've been asking for. Choose from Standard Box or Large Box sizes. Offering fast water flow into and out of sump. The lid snaps in to allow quick installation (and removal for cleaning) and includes a gasket to seal the sump box against overflow. The sump box even includes an air vent to prevent air locks. Meets or exceeds all applicable standards of the ABYC and USCG.

*Multiple Inlets Can Be Hooked Up to More Than One Drain – Using Different Hose Sizes*



### Specifications

Model	Fuse Size	Outlet Hose Size
500 gph	3-amps	3/4" I.D.
750 gph	5-amps	3/4" I.D.

### Output Ratings

Model	AMP Draw	Design Voltage - 13.6 VDC			Nominal Voltage-12 VDC		
		0 ft.	3.3 ft.	6.7 ft.	0 ft.	3.3 ft.	6.7 ft.
500 gph	1.4	420	360	215	385	290	130
750 gph	2.5	650	500	385	570	420	290

Performance for 24-Volt version is the same (Uses 2 Amp Fuses)



4141



4143

Model	Rated Voltage	Wire / Connector	Box Size	Bulk Packaging	Aftermarket Packaging*
500 gph	12-Volt	36" wire	Standard	4141-1	4141-4
750 gph	12-Volt	36" wire	Standard	4142-1	—
750 gph	12-Volt	36" wire	Large	4143-1	4143-4
750 gph	24-Volt	36" wire	Large	4144-1	—
750 gph	24-Volt	36" wire	Standard	4145-1	—

\*Individual Carton

new

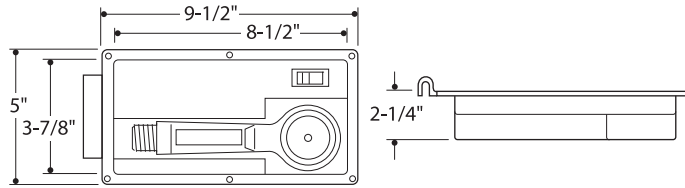


## SHOWER AND WASHDOWN SYSTEMS

These shower and washdown systems install flush in the transom or under the gunwale. Includes hinged cover and replaceable sprayer head. Fixtures are corrosion-resistant. Housing and cover are made of high-impact, UV resistant, engineering-grade plastic and are pre-drilled for six #8 fasteners.

### Aft-Deck Shower

Comes with 6' hose, shut-off, and hot/cold mixing controls. Connects to freshwater system for showering.



Description	Function	Hose Length	Bulk Packaging	Aftermarket Packaging*
Aft-Deck shower	Hot/cold	6'	4131-1	4131-4

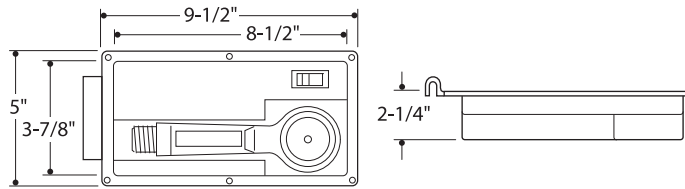
\* Individual Carton



4131

### Cold Water Shower

Hand-held shower sprayer with 6' hose and shut-off. Connects to freshwater system or self-priming wash-down pump for showering after swimming. Built-in on/off switch for pump.



Description	Function	Hose Length	Bulk Packaging	Aftermarket Packaging
Cold water shower	On/off switch	6'	4133-1	—



4133

### Self-Priming Washdown Pump

Self-priming pump for cleaning boats, general use, or use as a shower pump. Threaded male inlet and outlet for standard garden hose attachment. Pumps 4 gallons per minute, produces up to 8.5 PSI pressure. Corrosion-resistant ABS housing and impeller, heavy-duty 8-amp 12-Volt D.C. motor. **Note:** Do not run dry.

Description	Open Flow GPM	Max Head Pressure	Bulk Packaging	Aftermarket Packaging*
Self Priming pump	4	8.5 PSI	—	11574-4

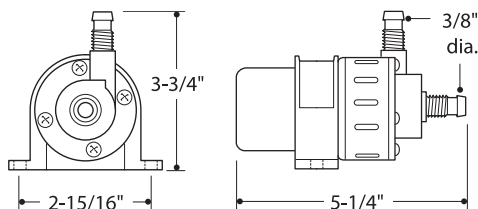
\* Individual Carton



11574

### Potable Water Pump

This economical, compact pump delivers drinking water from a water tank to the 6142 Three-Way Faucet/Hand Pump. Seal allows it to run dry without damage. Made from high-impact plastic. Patented. Inlet and outlet have combination fittings: 3/8" barbs can be removed to accommodate 1/4" NPT fitting. Potable Water Pump is not activated by line pressure. Pump is non-submersible. Note: Mount centrifugal pump so water will flow into the pump. **Caution:** Not external ignition protected.



6126

Inlet / Outlet Size	GPH	Max. Head	Amp Draw	Fuse Size	Bulk Packaging	Aftermarket Packaging*
3/8" barb, or convert to 1/4" NPT	150	16'	1.5	2-amp	6126-1	6126-7

\* Clam Shell

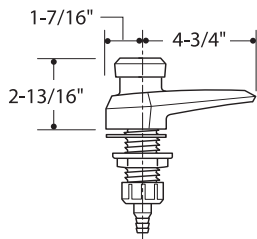


# WATER SYSTEMS / VENTILATION

## Faucet and Hand Pumps

Made from high-impact plastic. Use as a 2-way hand-operated pump in a self-contained water system, or as an ordinary faucet in a pressurized system.

For 1/2" female pipe thread fitting. Use as a 3-way manual, pressurized, or electric 12-Volt D.C. drinking water faucet, with 6126 Potable Water Pump. Delivers water immediately. Includes adapters for 3/8" I.D. hose or 1/4" tapered male pipe thread fitting. Single fixture eliminates the need for separate faucets on separate water systems.



### Specifications

Description	Part No.	Inlet Size	Fitting
2-way	6143	1/2" I.D. or 3/8" I.D.	Barbed
2-way	6144	1/2" I.D. or 1/4" NPT	Compression
3-way electric	6142	1/2" I.D. or 3/8" I.D., or Zv" NPT	Combination

Description	Bulk Packaging	Aftermarket Packaging*
2-way with 3/8" barbed fitting	6143-1	—
2-way with 1/4" compression fitting	6144-1	—
3-way electric with 3/8" and 1/4" adapters	—	6142-5

\*Poly Bag



6143



6142

## Faucet Repair Kit

Includes replacement knob pin, two flapper valves, stainless disk, plus all gaskets and seals.

Description	For Use With	Bulk Packaging	Aftermarket Packaging*
Faucet repair kit	6142, 6143, 6144	—	6127-3

\*Skin Pack



6127

## WaterBuster® Portable Pump

This patented, submersible pump is a great way to remove unwanted water from boats, pool covers, aquariums and sump pits. Convenient and safe because it needs no electrical cord — runs up to 5 hours on three alkaline "D"-batteries.

6 3/8" high x 5 1/4"-diameter.

- Pumps up to 200 gallons per hour
- Includes 42" hose with garden hose adapter for adding longer hose
- Lifts water to height of 4 feet.
- **Note:** Not to be used as a permanent bilge pump.

*Patented.*

**Excellent for use as a portable pump-out device for paddle boats, inflatables, duck boats, dingies and kayaks. Any craft that lacks a hard-wire, permanent electrical system.**

GPH Open Flow	GPH 2 ft. Head**	Bulk Packaging	Aftermarket Packaging*
200	125	—	4140-4

\*\*4 ft. maximum head

\*Individual Carton



4140

## Hand-Operated Bilge Pump

Only six strokes to pump out one gallon of water! Non-corrosive ABS plastic pump with flexible polyethylene hose. Bottom cap is removable for easy cleaning.

Dimensions	Bulk Packaging	Aftermarket Packaging*
18" hose length	—	11589-5
24" hose length	—	11590-5

\*Poly Bag



11589



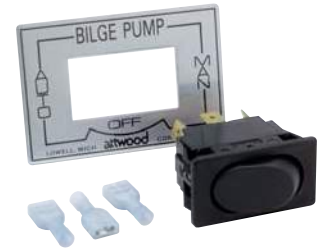
## Bilge Pump Switches

Panel-mounted rocker switches for use with pump that draws 10-amperes or less. 1/4" spade terminals. 6-Volt through 32-Volt D.C. only, 10-amperes maximum. Plate is 2 13/16" x 1 7/8". Hole size is 1 1/2" x 7/8".

**Caution:** Bilge pump switches are not external ignition protected.

Description	Bulk Packaging	Aftermarket Packaging*
2-way on/off	—	7615-3
3-way auto/off/manual	—	7615A3

\*Skin Pack



7615

## Livewell Aerator Switch

Provides on/off or cycling of aerator pump to extend battery life. Solid-state cycle module switches pump to on, or to a run time of 30 seconds on/3 minutes off. Includes face plate for panel mounting. For 12-Volt D.C. 10-amp maximum only.

- 1 1/4" long x 1 1/4" wide
- Installation hole size: 1/2"-diameter
- Depth behind panel: 3 1/4" deep

Description	Bulk Packaging	Aftermarket Packaging*
Three position switch on/off/cycle	—	14292-3

\*Skin Pack



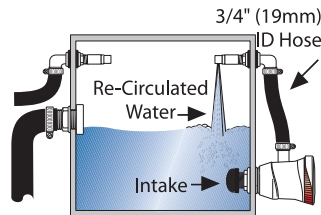
14292

## Tsunami Recirq Aerator Kit

The Tsunami Recirq Kit recirculates livewell water to keep it cooler and rich in oxygen. This self-contained system feeds a separate aerator spray head and works even while you are underway and cannot use a thru-hull connection. Add this kit to any tank that already has a freshwater fill system. Or use as a backup pump for a fail-safe system.

Recirq Kit includes:

- 500 GPH Tsunami aerator pump with short inlet, threaded outlet
- 4125-1 aerator spray head
- 4232-1 stainless steel strainer
- 2 plastic hose clamps
- 3/4" dia., 23' L poly hose
- Straight thread-to-barb connector



4253

Description	Bulk Packaging	Aftermarket Packaging*
T-500 Recirq Livewell Aerator Kit	—	4253-7

\*Clam Shell

## Bilge Pump Installation Kit

Complete kit to install manual bilge pump with 3/4" I.D. hose outlet.

- One two-way on/off switch with bezel plate
- One 3/4" I.D. x 5' corrugated hose
- One thru-hull fitting for 3/4" I.D. hose
- Two Snap-It hose clamps
- One two-conductor 16-gauge wire, 20' long
- One in-line fuse holder with 2-amp fuse

**Caution:** Bilge pump switches are not external ignition protected.

Description	Hose Size	Bulk Packaging	Aftermarket Packaging*
Complete kit	3/4" I.D.	—	4116-5
Complete kit with Tsunami T-500 bilge pump	3/4" I.D.	—	4614-7
5' hose with (2) clamps	3/4" I.D.	—	4199-7
6' hose only	1 1/8" I.D.	—	11551-5

-5 = Poly Bag; -7 = Clam Shell



4116



4614

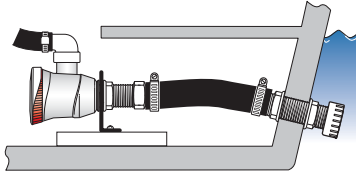
new



# WATER SYSTEMS / VENTILATION

## Aerator Remote Mounting Bracket

For mounting the aerator pump to a base, away from the transom.



Description	Bulk Packaging	Aftermarket Packaging*
1 1/8" Aerator remote mounting bracket	4121-1	4121-3
3/4" Aerator remote mounting bracket	4122-1	4122-3

\*Skin Pack



4121

4122

## Bilge Pump Mounting Bracket

For stringer mount applications. Accommodates both Tsunami and Sahara Series pumps.

**new**

Description	Bulk Packaging	Aftermarket Packaging*
Universal remote mount bilge pump bracket	4181-1	4181-3

\*Skin Pack



4181

## Aerator Spray Heads

For use on livewells that have built-in overflows or recirculating systems.

### Adjustable Spray Heads

Mounts on sides of tank. 90° fitting for installation in tight spaces. Rotating head with O-ring adjusts and maintains flow setting. Removable head has an "interference-fit thread design" that will not allow it to vibrate or blow out. Polypropylene construction. Can be installed on tanks with up to 5/8" wall thickness.

Description	Hose I.D.	Bulk Packaging	Aftermarket Packaging*
Adjustable aerator head	3/4"	4125-1	4125-7
Adjustable aerator head w/ male connector for Flow-Rite™ Qwik-Lok™ Coupler	3/4"	4123-1	—
Adjustable Aerator Spray Head for use w/ 1 1/8" I.D. Hose	1 1/8"	4127-1	4127-3

-7= Clam Shell, -3= Skin Card



4125



4123



4127

### Non-Adjustable Spray Heads

Available in double and single valve models, multi-port spray maximizes oxygen level in the livewell. Constructed of ABS plastic.

#### Double Valve Spray Head

Allows aerating options — one end can be used for freshwater fill, the other end with a recirculating pump.

Description	Hose I.D.	Bulk Packaging	Aftermarket Packaging
Aerator head, 1 valve	3/4"	4118A1	—
Aerator head, 2 valves	3/4"	4118-1	—

-7= Clam Shell, -3= Skin Card



4118



4118A

#### Single Valve Spray Head

For output from an aerator pump into the livewell.

## Check Tees

These check tees replace additional connections for RV and marine hookups, providing a combination check valve and tee that allows water to flow in from the dockside connection without filling the tank. Available in two styles. Constructed of ABS plastic.

### Combination Barbed Fitting

Inlet and outlet have combination fittings: Comes with 3/8" barbs that can be removed to accommodate 1/4" NPT fitting. 1/2" NPT fitting for dockside water connection.

### Combination Barbed Inlet/Threaded Outlet

Inlet has combination fitting: Comes with 3/8" barbs that can be removed to accommodate 1/4" NPT fitting. Outlet is 1/2" NPSM. 1/2" NPT fitting for dockside water connection.

Description	Bulk Packaging	Aftermarket Packaging
Combination barbed fitting	6115-1	—
Combination barbed inlet/threaded outlet	6115A1	—



6115



6115A





## PLUMBING SYSTEM FITTINGS

### Snap-It Hose Clamps

Use on bilge pumps and shower sump systems. Install by squeezing tabs together. Can be re-used by sliding the locking grooves apart. Corrosion-resistant plastic.

**Note: Clamps are intended for water and waste system hoses only.**

Dimensions	Bulk Packaging	Aftermarket Packaging
For 7/8" to 1" O.D. hose	9185J1	—
For 1 3/16" to 1 7/16" O.D. hose	9185M1	—



9185M1

### Tees

Three-way 90° fitting. Acetal construction.

Dimensions	Bulk Packaging	Aftermarket Packaging
For 3/4" I.D. hose	3892-1	—
For 1 1/8" to 1 1/4" I.D. hose	3893-1	—



3892

### Elbows

Two-way 90° fitting. 3894 is acetal construction, 3895 is polypropylene construction.

Description	Bulk Packaging	Aftermarket Packaging
For 3/4" I.D. hose	3894-1	—
For 1 1/8" or 1 1/4" I.D. hose	3895-1	—



3894

### Straight Connectors

Threaded end fits 3888 drain fitting, A-Series aerator pump outlets and Tsunami threaded outlets. Acetal construction.

3899: Barbed end accommodates 3/4" I.D. hose.

3909: Male end accommodates Flow-Rite™ Qwik-Lok™ Coupler.

Description	Bulk Packaging	Aftermarket Packaging*
Thread-to-Barb Cv"-14 NPSM and Cv" I.D. hose fitting	3899-1	3899-3
Thread-to-Flow-Rite™ Qwik-Lok™ Connector fitting	3909-1	—
Thread-to-Barb Straight 1 3/8" - 12 UNF thread & 1/8" hose fitting	3902-1	3902-3



3899



3909



3902

\*Skin Pack

### 90° Connectors

3890: Threaded female end fits 3888 drain fitting or A-Series aerator pump outlets and Tsunami threaded outlets. Barbed end accommodates 3/4" I.D. hose. Acetal construction.

3900: Threaded end fits A-Series aerator pump outlets and Tsunami threaded outlets. Male end accommodates Flow-Rite™ Qwik-Lok™ Coupler.

3891: Threaded end fits 3889 drain fitting. High-impact plastic. Barbed end accommodates 1 1/8" or 1 1/4" I.D. hose. Acetal construction.

Description	Bulk Packaging	Aftermarket Packaging
For 3/4"-14 threads and 3/4" I.D. hose	3890-1	—
Thread-to-Flow-Rite™ Qwik-Lok™ Connector	3900-1	—
For 1 3/8"-12 threads and 1 1/8" or 1 1/4" I.D. hose	3891-1	—



3890



3900



3891



# WATER SYSTEMS / VENTILATION

## STAINLESS STEEL THRU-HULLS & SCUPPER VALVE FITTINGS

Polish your image with these beautiful, durable stainless steel fittings. Each Thru-Hull and Scupper Valve is available with a new silicone gasket and are backed by Attwood's trusted Lifetime Warranty! Why specify plastic parts when these fittings will last the life of the boat?

### Rugged Stainless Construction

- Cast from certified enhanced #316 Stainless Steel alloy for strength and lifetime corrosion-resistance
- We polish all visible areas to a mirror finish, then each part through passivation for additional protection
- Thick steel sidewalls withstand continual stress and hose flexing

### Solid Silicone Gasket

- Gasket is dimensionally stable — will not deteriorate or shrink over time
- Excellent resistance to UV & weather-aging
- Watertight, fool-proof, one-piece seal
- Eliminates the need to form and apply sealant or caulk
- No more chemicals, solvent-soaked rags, or cleanup
- More than pays for itself in saved labor and cleanup time
- Guaranteed good looks because the perfect fit and concealment is built into the gasket

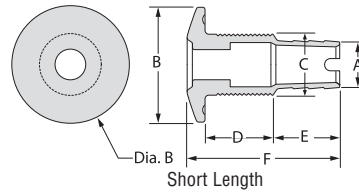
### Faster, Simpler Installation

- A channel under the flange holds a bead of sealant, making it easier to apply a trouble-free seal
- All models have wrench flats or an end notch to hold as a gripping surface. One installer can tighten all connections from inside the hull
- Barbed tail ends provide plenty of room to hold multiple clamps

## Stainless Straight Thru-Hulls, Barbed

- Standard Thread model has full-length thread for thick hulls and easy tightening
- Short Thread is a more compact size. Allows installation near corners and in confined areas.

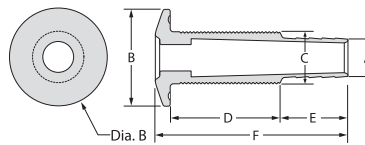
**Caution: Stainless Thru-Hull Connectors are designed for installation above the water line only.**



### Short Length

A Hose Size	B Flange Dia.	C Thread O.D.	D Thread Length	E Barb Length	F Total Length	Install. Hole Saw Size	Thread NPSM	Max. Hull Thick.	Bulk Without Gasket	Bulk With Gasket	Aftermarket Packaging
5/8" I.D.	1 7/8"	1"	1"	1"	2 1/4"	1 1/8"	3/4"	5/8"	66540-1	66540G1	66540-3
3/4" I.D.	1 7/8"	1"	1"	1"	2 1/2"	1 1/8"	3/4"	5/8"	66541-1	66541G1	66541-3
1" I.D.	2 1/4"	1 3/8"	1 1/8"	1"	2 1/2"	1 1/2"	1"	5/8"	66542-1	66542G1	66542-3
1 1/8" I.D.	2 1/4"	1 3/8"	1 1/4"	1"	2 1/2"	1 1/2"	1"	5/8"	66543-1	66543G1	66543-3
1 1/4" I.D.	2 3/4"	1 5/8"	1 1/4"	1"	2 5/8"	1 3/4"	1 1/4"	5/8"	66544-1	66544G1	66544-3
1 1/2" I.D.	3"	1 7/8"	1 1/4"	1 1/2"	3 1/8"	2"	1 1/2"	5/8"	66545-1	66545G1	66545-3

\*Skin Pack



Standard Length

### Standard Length

A Hose Size	B Flange Dia.	C Thread O.D.	D Thread Length	E Barb Length	F Total Length	Install. Hole Saw Size	Thread NPSM	Max. Hull Thick.	Bulk Without Gasket	Bulk With Gasket	Aftermarket Packaging
5/8" I.D.	1 7/8"	1"	2"	1 1/4"	3 3/4"	1 1/8"	3/4"	1 1/16"	66546-1	66546G1	66546-3
3/4" I.D.	1 7/8"	1"	2"	1 1/4"	3 3/4"	1 1/8"	3/4"	1 5/8"	66547-1	66547G1	66547-3
1" I.D.	2 1/4"	1 3/8"	2 1/4"	1 1/4"	3 7/8"	1 1/2"	1"	1 3/4"	66548-1	66548G1	66548-3
1 1/8" I.D.	2 1/4"	1 3/8"	2 3/8"	1 1/4"	3 7/8"	1 1/2"	1"	1 3/4"	66549-1	66549G1	66549-3
1 1/4" I.D.	2 3/4"	1 5/8"	2 1/2"	1 1/4"	4 1/4"	1 3/4"	1 1/4"	1 7/8"	66550-1	66550G1	66550-3
1 1/2" I.D.	3"	1 7/8"	2 1/2"	1 1/4"	4 1/8"	2"	1 1/2"	1 7/8"	66551-1	66551G1	66551-3
2" I.D.	3"	2 3/8"	2 1/2"	1 3/4"	4 5/8"	2 1/2"	1 1/2"	2"	66552-1	66552G1	—

\*Skin Pack



66540G



66542



66546G



66548

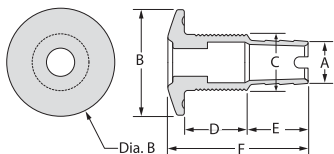


## STAINLESS THRU-HULLS

New threaded thru-hulls available:

- Unique multi-thread design with NPSM and NPT threads
- Offer generous thread length
- Allows for direct connection to seacocks or pipes

### Straight Thru-Hulls, Threaded



A Thread O.D.	B Flange Dia.	C Thread Length	D Total Length	Installation Hole Saw Size	Threads NPT	Max. Hull Thickness	Bulk Without Gasket	Bulk With Gasket	Aftermarket Packaging
1"	1 7/8"	2 1/8"	2 1/2"	1 1/8"	3/4"	1 5/8"	66559-1	66559G1	—
1 5/16"	2 1/4"	2 1/4"	2 5/8"	1 3/8"	1"	1 3/4"	66561-1	66561G1	—
1 7/8"	3"	2 3/8"	2 3/4"	2"	1 1/2"	1 7/8"	66563-1	66563G1	—



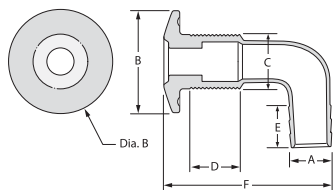
66559



66558G

### 90° Thru-Hulls, Barbed

Allows installation in especially tight spaces.



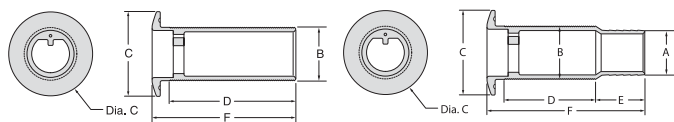
A Hose Size	B Flange Dia.	C Thread O.D.	D Thread Length	E Barb Length	F Total Length	Install. Hole Saw Size	Thread NPSM	Max. Hull Thick.	Bulk Without Gasket	Bulk With Gasket	Aftermarket Packaging
3/4" I.D.	1 7/8"	1"	1 1/2"	3/4"	3 3/8"	1 1/4"	3/4"	1 1/16"	66577-1	66577G1	—
1 1/8" I.D.	2 1/4"	1 3/8"	1 7/8"	3/4"	4 3/8"	1 5/8"	1"	1 1/4"	66579-1	66579G1	—



66577

## Stainless Scupper Valves

- The Scupper Flap is tough neoprene rubber with a molded V that fits into the grooved body to reduce backwash
- Fasteners are concealed and corrosion-proof



Threaded

Barbed

A Hose Size	B Flange Dia.	C Thread O.D.	D Thread Length	E Barb Length	F Total Length	Install. Hole Saw Size	Thread NPT	Max. Hull Thick.	Bulk Without Gasket	Bulk With Gasket	Aftermarket Packaging*
<b>THREADED</b>											
—	1 7/8"	3"	3 1/2"	—	3 7/8"	2"	1 1/2"	3"	66565-1	66565G1	—
—	2 23/64"	3 5/8"	2 1/2"	—	2 7/8"	2 1/2"	2"	2"	66567-1	66567G1	—

\*Skin Pack



66565



66567G



66557



66557G

A Hose Size	B Flange Dia.	C Thread O.D.	D Thread Length	E Barb Length	F Total Length	Install. Hole Saw Size	Thread NPSM	Max. Hull Thick.	Bulk Without Gasket	Bulk With Gasket	Aftermarket Packaging*
<b>BARBED</b>											
1 1/2"	1 7/8"	3"	3 1/2"	1 1/2"	5 1/2"	2"	1 1/2"	3"	66553-1	66553G1	66553-3
2"	2 23/64"	3 5/8"	2 1/2"	1 5/16"	4 1/2"	2 1/2"	2"	2"	66555-1	66555G1	—
1 1/2"	1 7/8"	3"	2 1/4"	1 1/2"	4 1/2"	2"	1 1/2"	1 3/4"	66557-1	66557G1	—

\*Skin Pack



## Stainless Steel Narrow Flange Thru-Hulls

**new**

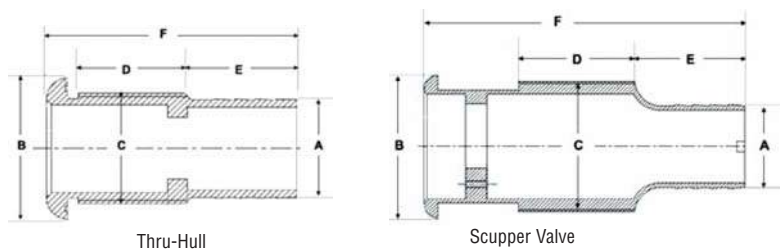
- Consistent exterior appearance throughout a range of barb sizes
- Modern Styling
- Enhanced 316 stainless steel, guaranteed from life

### Extreme Corrosion Resistance

As with all Attwood's stainless steel products, these new fittings are cast from our proprietary stainless steel alloy. An enhanced version of 316 stainless, our stainless steel has proven to provide even greater corrosion resistance than competition's standard #316 stainless. To express our confidence, Attwood Stainless Steel Thru-Hull fittings are **Guaranteed for Life!**

### Gasket for Caulk Free Sealing

For a durable, maintenance free sealing alternative, all our fittings come equipped with an optional silicone gasket. Customized specifically for each thru-hull flange design, our gaskets take the hassle out of assembly by eliminating the need for marine sealants and caulks.



A Hose Size	B Flange Dia.	C Thread O.D.	D Thread Length	E Barb Length	F Total Length	Installation Hole Saw Size	Threads NPSM	Max Hull Thickness	Bulk Without Gasket	Bulk With Gasket
THRU-HULLS STANDARD LENGTH										
5/8"	17/10"	13/10"	12/5"	11/8"	3"	15/16"	1"	7/8"	67555-1	67555G1
3/4"	17/10"	13/10"	13/10"	11/4"	3"	15/16"	1"	3/4"	67554-1	67554G1
1"	17/10"	13/10"	12/5"	11/8"	3"	15/16"	1"	7/8"	67556-1	67556G1
11/8"	17/10"	13/10"	11/4"	11/8"	27/8"	15/16"	1"	3/4"	67557-1	67557G1
11/2"	22/5"	17/8"	11/2"	13/5"	32/5"	2"	11/2"	1"	67551-1	67551G1
THRU-HULLS LONG LENGTH										
3/4"	17/10"	13/10"	11/2"	11/8"	41/8"	15/16"	1"	—	67558-1	—
11/8"	17/10"	13/10"	11/2"	11/8"	41/8"	15/16"	1"	—	67561-1	—
11/2"	22/5"	17/8"	11/2"	17/16"	415/16"	2"	1"	—	67562-1	—
SCUPPER VALVE										
11/2"	23/5"	17/8"	2"	2"	53/4"	21/8"	11/2"	23/4"	67553-1	67553G1



67555



67554



67556  
67557



67551



67553



## Stainless Steel Exhaust Thru-Hulls

**new**

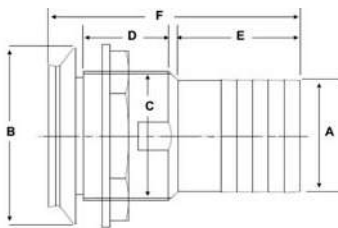
- Specifically designed for generator and engine exhaust applications
- Features unique, modern styling that is both elegant and functional
- Stainless steel scupper valve and an integrated stainless drip ring

### Extreme Corrosion Resistance

As with all Attwood's stainless steel products, these new fittings are cast from our proprietary stainless steel alloy. An enhanced version of 316 stainless, our stainless steel has proven to provide even greater corrosion resistance than competition's standard #316 stainless. To express our confidence, Attwood Stainless Steel Thru-Hull fittings are **Guaranteed for Life!**

### Gasket for Caulk Free Sealing

For a durable, maintenance free sealing alternative, all our fittings come equipped with an optional silicone gasket. Customized specifically for each thru-hull flange design, our gaskets take the hassle out of assembly by eliminating the need for marine sealants and caulks.



A Hose Size	B Flange Dia.	C Thread O.D.	D Thread Length	E Barb Length	F Total Length	Installation Hole Saw Size	Threads NPSM	Max Hull Thickness	Bulk Without Gasket	Bulk With Gasket
1 1/2"	3.18"	2.26"	1.6"	1.97"	4.58"	2.375"	2" - 11 1/2	1.125"	67581-1	67581G1
2"	3.18"	2.26"	1.6"	2.23"	4.58"	2.375"	2" - 11 1/2	1.125"	67580-1	67580G1
2 1/2"	4.6"	3.375"	1.8"	2.75"	5.8"	3.625"	3" - 8	1.5"	67583-1	67583G1
3"	4.6"	3.375"	1.8"	3.0"	5.8"	3.625"	3" - 8	1.5"	67582-1	67582G1







# WATER SYSTEMS / VENTILATION

## Thru-Hull Connectors



3872, 3873



3896



3874



3897

These thru-hulls are made of thermoplastic resins.

**Caution:** All plastic thru-hull connectors are designed for installation above the water line only.

### Specifications

Fits Hose Size	Stem Length	Max Hull Thickness	Flange Diameter	Installation Hole Size	Construction	Color	Bulk Packaging	Aftermarket Packaging*
5/8" I.D.	3 1/4"	1 1/4"	1 3/4"	1 1/8"	Polypropylene	White	<b>3872-1</b>	<b>3872-3</b>
Accommodates 7534A (5/8") bailer plug						Black	<b>3872A1</b>	—
3/4" I.D.	3 1/4"	1 1/4"	1 3/4"	1 1/8"	Polypropylene	White	<b>3873-1</b>	<b>3873-3</b>
Accommodates 7534A (5/8") bailer plug						Black	<b>3873A1</b>	—
3/4" I.D.	4"	2"	2"	1 1/16" to 1 1/8"	Acetal	White	<b>3896-1</b>	<b>3896-3</b>
1 1/8" to 1 1/4" I.D.	3 1/4"	1 1/4"	2 1/4"	1 3/8"	Polypropylene	White	<b>3874-1</b>	<b>3874-3</b>
Accommodates 7535A (M,") bailer plug						Black	<b>3874A1</b>	—
1 1/8" to 1 1/4" I.D.	4 1/8"	1 5/16"	2 1/4"	1 7/16" to 1 1/2"	Acetal	White	<b>3897-1</b>	<b>3897-3</b>
						Black	<b>3883-1</b>	—
1 1/2" I.D.	3 1/2"	1 1/4"	3"	1 7/8" to 2"	Polypropylene	White	<b>3875-1</b>	<b>3875-3</b>
Accommodates 7535A (M,") bailer plug						Black	<b>3875A1</b>	—
Replacement nut	—	—	—	—	Polypropylene	White	<b>911078A1</b>	—
2" I.D.	3 1/2"	1 1/4"	3"	1 7/8" TO 2"	Polypropylene	White	<b>3845-1</b>	—

\*Skin Pack



3875



3845

## Thru-Transom Thru-Hull Connector

For installation through the transom. Ideal for overflow use in livewell installations. Can be used with the 3876 Scupper Valve in self-bailing applications, or as an exhaust port for a bilge pump. Polypropylene construction.

Description	Stem Length	Max. Hull Thickness	Flange Diameter	Installation Hole Size	Color	Bulk Packaging	Aftermarket Packaging
For 1 1/2" I.D. hose	5 1/2"	3 1/8"	2 3/4"	2"	White	<b>3875B1</b>	—
Replacement Nut	—	—	—	—	—	<b>911078A1</b>	—



3875B

## Double-Ended Thru-Hull Connector

Double-ended thru-hull provides watertight transition through bulkheads or tanks. 5" overall length. Polypropylene construction.

Dimensions	Installation Hole Size	Max. Hull Thickness	Bulk Packaging	Aftermarket Packaging*
3/4" I.D. hose	1 1/8"	1 1/8"	<b>3878-1</b>	<b>3878-3</b>

\*Skin Pack



3878

## 90° Thru-Hull Connectors

90° thru-hulls are ideal for tight installations, such as livewell overflow drains. Design eliminates hose kinking. Polypropylene construction.

Dimensions	Max. Hull Thickness	Flange Diameter	Installation Hole Size	Color	Bulk Packaging	Aftermarket Packaging*
3/4" I.D. hose	1"	1 1/2"	1"	White	<b>3877-1</b>	<b>3877-3</b>
Accommodates 7533A (1/2") bailer plug				Black	<b>3880-1</b>	—
1 1/8" OR 1 1/4" I.D. hose	1 7/8"	2 7/16"	1 5/16"	White	<b>3879-1</b>	<b>3879-3</b>
Accommodates 7535A (7/8") bailer plug				Black	<b>3870-1</b>	—

\*Skin Pack



3877



3879



## Scupper Valve

Provides a water exit for boats with self-bailing cockpits. Acetal construction. Accommodates 3875B thru-transom thru-hull connector (screw holes must be drilled for installation.) Diameter: 2<sup>7</sup>/<sub>8</sub>". Use as a replacement valve for 3881 Thru-Transom Scupper.

Description	Bulk Packaging	Aftermarket Packaging*
Valve	3876-1	3876-3
Ring only	910881A1	—

\*Skin Pack



3876

## Thru-Transom with Scupper

The rubber flapper opens to drain water out and closes to prevent backwash. Acetal construction. For 1<sup>1</sup>/<sub>2</sub>" I.D. hose.

Dimensions	Dimensions	Max. Hull Thickness	Installation Hole Size	Bulk Packaging	Aftermarket Packaging
Thru-Transom with scupper	6 <sup>1</sup> / <sub>4</sub> " L x 2 <sup>7</sup> / <sub>8</sub> " dia.	3 <sup>1</sup> / <sub>8</sub> "	2"	3881-1	—



3881

## Thru-Hull with Strainer

Thru-hull connector with strainer prevents clogging of the aerator pump. Strainer attaches to threads that extend beyond external retaining nut. Acetal construction. Caution: Do not use strainer as a thru-hull connector nut replacement.

Description	Size	Max. Hull Thickness	Installation Hole Size	Bulk Packaging	Aftermarket Packaging*
Thru-Hull with strainer	For 3/4" I.D. hose	1 <sup>7</sup> / <sub>16</sub> "	1 <sup>1</sup> / <sub>16</sub> " to 1 <sup>1</sup> / <sub>8</sub> "	3886-1	3886-3

\*Skin Pack



3886

## Mesh Strainer/Drain Filter

Durable strainers to prevent debris from clogging baitwell drains and aerator pumps. Two types of construction: formed stainless steel wire mesh molded into black PVC plastic base; or acetal plastic.

**Caution: Aerator pump must be secured with aerator attachment nut prior to installing strainer.**

Description	Thread	Applications	Bulk Packaging	Aftermarket Packaging*
Stainless steel mesh	7/8"-9 UNC2-B	Fits 3877-1 thru-hull	11524-1	11524-3
	3/4"-14 NPSM	Fits 3/4" aerator inlet and 3886-1 thru-hull	4232-1	4232-7
	1 <sup>3</sup> / <sub>8</sub> "-12 UNF	Fits 4660/4661 aerator inlet	4234-1	4234-3
Molded plastic	3/4"-14 NPSM	Fits aerator inlet and 3886-1 thru-hull	3885-1	3885-3

\* -3 = Skin Pack; -7 = Clam Shell



11524

4234



3885



# WATER SYSTEMS / VENTILATION

## Cockpfit Drains

For use with 1½" I.D. hose as part of a self-bailing cockpit system. Features short stem and narrow flange for installing through cockpits. Polypropylene construction.

Description	Stem Length	Max. Hull Thickness	Flange Diameter	Installation Hole Size	Bulk Packaging	Aftermarket Packaging
Drain	3¾"	1½"	2⅞"	1⅞"	3875C1	—
Drain with screen	4¾"	1⅞"	2⅞"	1⅞"	3882-1	—



## Drain Fittings

These drain fittings can be used with a hose connector to create a drain. Use 3888 with 3899 or 3890 threaded/hose-to-barb connector. Use 3889 with 3891 threaded/hose-to-barb connector. Acetal construction.

Description	Length	Max. Hull Thickness	Installation Hole Size	Bulk Packaging	Aftermarket Packaging
¾" diameter	1½"	1⅞"	1⅞" to 1⅞"	3888-1	—
1⅞" diameter	1½"	1⅞"	1⅞" to 1½"	3889-1	—



## Drain Cover

Polished stainless steel drain cover can be used for floor drains, vents, or hidden horn openings. Four holes for #6 fasteners.

Description	Bulk Packaging	Aftermarket Packaging*
Stainless steel, 3¼" dia.	66308-1	66308-3

\*Skin Pack



66308

## Drain Plug and Receiver Kit

Molded black ABS plastic with threaded receiver. Molded retaining strap. Includes attaching screws and elastomeric gasket for a watertight fit.

Description	Bulk Packaging	Aftermarket Packaging*
¾" dia. one piece plug	17209-1	17211-3

\*Skin Pack



17209

## Bronze Garboard Drain Plug

Provides bilge drainage when hauling out. Nut removes with wrench or pliers. Machined, tapered pipe threads ensure watertight plug fit. ¾" neck depth. Three countersunk holes for #8 fasteners.

Description	Construction	Bulk Packaging	Aftermarket Packaging*
½" NPT drain	Cast bronze	7555-1	7555-3
Replacement plugs		9842-1	9842-3**

\*Skin Pack; \*\*Skin Pack, pair



7555

## Stainless Steel Garboard Drain Plug

Threaded removeable plug. Retention system keeps plug from getting lost. Large ⅞" (27mm) hole for servicing sterndrives. High polished 316 stainless steel reduces corrosion. Guaranteed for life.

**new**

Description	Construction	Bulk Packaging	Aftermarket Packaging*
⅞" diameter	Stainless Steel	7557-1	7557-7

\*Clam Shell



7557-1



## T-Handle Drain Plugs

For 1"-diameter drains. A clockwise turn of the T-handle locks the plug in place; turn counterclockwise to release. Available in brass or stainless steel, with or without chain.

Description	Bulk Packaging	Aftermarket Packaging*
<b>BRASS HANDLE</b>		
Without chain	7526A1	7526A7
100 units (w/o chain) in battery box display. One UPC sheet for use with all 100 units	—	7526D1
24 units (w/o chain) in PDQ display carton.	7526PD1	7526PD1
<b>BRASS PLATED HANDLE</b>		
Without chain	—	11592-3
48 units (w/o chain) in display carton.	11587-4	11587-4
<b>STAINLESS STEEL HANDLE</b>		
Without chain	7518A1	7518A3

\*-3 or A3=Skin Pack; -4=Display Carton; A7=Clam Shell; PD1=PDQ Display



## Snap-Handle Drain Plugs

Snap-handle drain plugs for 1"-diameter drains. A clockwise turn of the handle tightens the plug in its tube, and the handle flips down to lock. Available in brass or stainless steel. With or without chain.

Description	Bulk Packaging	Aftermarket Packaging*
<b>BRASS HANDLE</b>		
Without chain	7524A1	7524A7
With 5" chain	7524B1	—
75 units (w/o chain) in battery box display. One UPC sheet for use with all 75 units	—	7524D1
24 units (w/o chain) in PDQ display carton.	7524PD1	7524PD1
<b>BRASS PLATED HANDLE</b>		
Without chain	—	11591-3
48 units (w/o chain) in display carton.	11586-4	11586-4
<b>STAINLESS STEEL HANDLE</b>		
Without chain	7520A1	7520A3

-3 or A3 = Skin Pack; -4 = Display Carton; A7 = Clam Shell; PD1=PDQ Display



## Livewell/Bailer Plugs—Snap-Handle

Cam-action neoprene plugs snap shut to form a stopper for livewells or baitwells. A clockwise turn of the handle tightens the plug, and the lever flips down to lock. Ideal for livewell drains. Brass snaps and plates. **Note:** Not for use with chemicals or fuels.

Description	Bulk Packaging	Aftermarket Packaging*
For 3/8" I.D. thru-hull	7531A1	7531A3
For 7/16" I.D. thru-hull	7532A1	7532A3
For 1/2" I.D. thru-hull	7533A1	7533A7
24 units for 1/2" thru-hull in PDQ display carton	—	7533PD1
For 5/8" I.D. thru-hull	7534A1	7534A3
For 7/8" I.D. thru-hull	7535A1	7535A3

\*-3 or A3=Skin Pack; -4=Display Carton; A7=Clam Shell; PD1=PDQ Display



## Drain Tubes

Drain tubes for 1"-diameter drain plugs. Use aluminum drain tubes with aluminum-handle drain plugs; use brass tubes with brass-handle plugs and stainless steel plug handles. Tubes have .032" wall thickness.

Description	Length	Bulk Packaging	Aftermarket Packaging*
Brass Drain Tube	1 7/8"	7566AR1	7566AR3
	2 3/8"	7566BG1	—
	2 7/8"	7566BR1	7566BR3
	3"	11446-1	—

\*Skin Pack



# TURBO IN-LINE BLOWERS

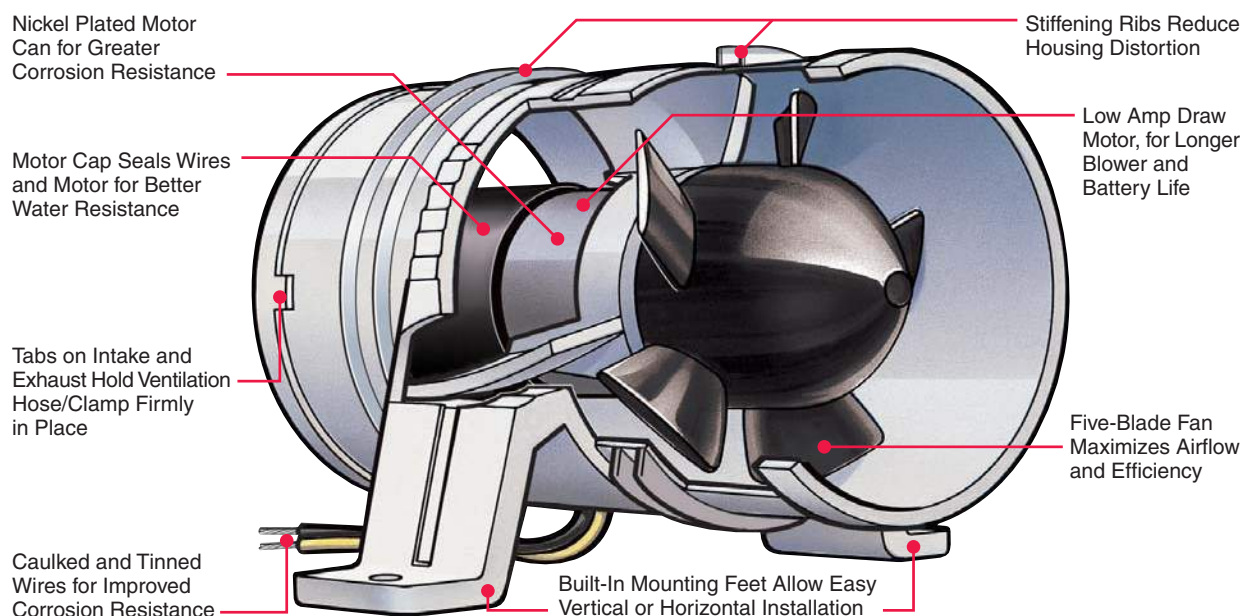
## MAXIMUM EFFICIENCY BLOWERS

- UP TO 25% HIGHER AIRFLOW
- UP TO 40% FEWER AMPS
- WATER-RESISTANT MODELS



## Design Features

Compact In-Line Product Design for Installation in Confined Areas



## Aerospace Technology

Attwood's Turbo Blowers were the first vane axial-flow fan bilge blowers designed using aerospace technology to maximize performance. Attwood engineers re-designed every element — motor, housing, and fan — for the highest possible system efficiency and blower performance. They succeeded in building some of the most effective blowers in the industry.

## Higher Output

No other bilge blowers in the industry provide such powerful system output at such low power input in a compact size.

- System airflow exceeds old-style in-line blowers by as much as 25%
- Motor draws up to 40% fewer amps, making Turbo blowers up to four times more efficient than competitive blowers. This means unsurpassed reliability
- Straight-through housing minimizes airflow loss
- Nose cone straightens airflow for efficient entry into the fan blades; five-blade design minimizes airflow interference
- The blade sweep and pitch are engineered for a high lift coefficient, increasing airflow speed; reinforced plastic maintains blade shape

*Imitated, but not equaled.*

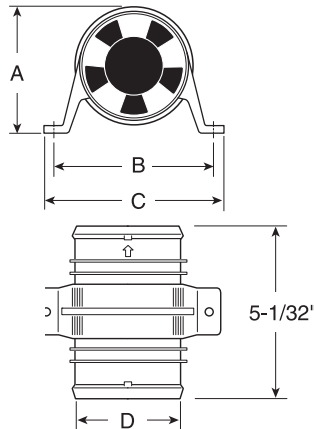




## Turbo In-Line Blowers

Patented in-line design – provides ventilation for engine compartments, galleys, bilges, and heads. Mounting feet allow vertical or horizontal installation in confined spaces. Install with #10 fasteners. Individual carton includes 2 tie straps. All are CE certified. 16-gauge tinned and caulked copper wire leads.

Part No.	NMMA No.	IMCI (CE) Certificate No.
1731 Series	90928	FATT001
1733 Series	90928	FATT005
1741 Series	90940	FATT002
1743 Series	90940	FATT008
1745 Series	90940	FATT003



Model No.	Voltage	CFM Open Flow	CFM In System*	Current Draw Amps	Fuse Size
Turbo 3000	12V nominal	120	90	2.6	4-amp
	13.6V design	145	100	3.1	4-amp
Turbo 4000	12V nominal	200	100	3.5	8-amp
	13.6V design	230	125	4.4	8-amp
Turbo 4000	24V nominal	200	100	1.9	4-amp
	27.2V design	230	125	2.5	4-amp

\*In system = 3 ft. of duct with one 90° bend, a collector box and louvered vent on discharge side of blower at 13.6 VDC

### Dimensions

Model	A	B	C	D
3000	3 <sup>5</sup> / <sub>8</sub> "	4 <sup>1</sup> / <sub>2</sub> "	5 <sup>1</sup> / <sub>16</sub> "	3"
4000	4 <sup>17</sup> / <sub>32</sub> "	5 <sup>1</sup> / <sub>2</sub> "	6 <sup>1</sup> / <sub>16</sub> "	4"

## Turbo 3000

Turbo 3000 Bilge Blowers for 3" I.D. Ventilation Hose

Model No.	Description	Bulk Packaging	Aftermarket Packaging*
Turbo 3000	Standard, 12-Volt, white	1731-1	1731-4
	Water-Resistant, 12-Volt, white	1733-1	1733-4

\*Individual Carton



1731

## Turbo 4000

Turbo 4000 Bilge Blowers for 4" I.D. Ventilation Hose

Description	Description	Bulk Packaging	Aftermarket Packaging*
Turbo 4000	Standard, 12-Volt, white	1741-1	1741-4
	Water-Resistant, 12-Volt, white	1743-1	1743-4
	Water-Resistant, 24-Volt, white	1745-1	—

\*Individual Carton



1741

## Turbo 4000 Series II—Less Noise

Attwood's new and improved Turbo 4000 sets the standard for in-line blower performance. Utilizing advanced fan blade design techniques, Attwood has developed a blower system that matches air flow of existing in-line blowers at a significantly reduced noise level. For added durability, Attwood incorporates an engineered plastic housing that resists deformation during installation and prevents blade to housing interference.



**new**



1747

Description	Description	Bulk Packaging	Aftermarket Packaging
Turbo 4000, New & Improved	Standard, 12-Volt, white	1747-1**	—
	Water-Resistant, 12-Volt, white	1749-1**	—
	Water-Resistant, 24-Volt, white	1751-1**	—

\*\* Available in June 2009



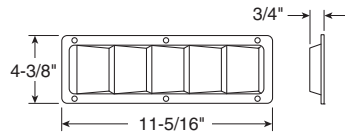
# WATER SYSTEMS / VENTILATION

## VENTS AND COLLECTOR BOXES

Attwood hull-mounted vents are designed to install by fastening as a complete unit from either inside or outside the hull. Ventilation hose (not included) twists into the bottom of the box to form a raised water barrier. Plastic vents are corrosion-resistant, will not discolor, and some can be painted to match boat gelcoat. All collector boxes and vents are designed for intake or exhaust and meet ABYC H-2 cross sectional area requirements.

### Stainless Steel Louvered Vent

All-welded 304 stainless steel construction with polished finish. Install with #8 fasteners. Requires collector box 1487A for 3" system, or 1487B for 4" system.



Description	Description	Bulk Packaging	Aftermarket Packaging *
1487A, 1487B	3 1/4" x 10 3/8"	1488-1	1488-5

\* Poly Bag



1488

### Collector Boxes

Collector boxes for use with 1488 stainless steel vent. Available with cut-out for two 3" I.D. wire-supported hoses or one 4" I.D. wire-supported hose. Corrosion-resistant plastic.

Description	Depth	Installation Hole Size	For Use With Vents	Bulk Packaging	Aftermarket Packaging
For two 3" I.D. hoses	5 9/16"	3 5/8" x 10 3/4"	1488	1487A1	—
For one 4" I.D. hose	5 9/16"	4 5/8" x 10 3/4"	1488	1487B1	—



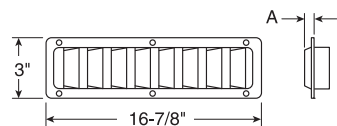
1487A1



1487B1

### Narrow Stainless Steel Louvered Vents

Suitable for installation on any flat or most contoured hulls. Constructed of all-welded 304 stainless steel with a polished finish. Vents for use with 3" I.D. ventilation systems, and require a 1343 collector box. Install with #6 fasteners.



Depth (A)	For Use With Collector Box	Opening Hole Size	Bulk Packaging	Aftermarket Packaging*
9/16"	1343	2 1/16" x 15 15/16"	1493-1	1493-5
1/16"	1343	2 1/16" x 15 15/16"	1499-1	1499-5

\* Poly Bag



1493



1499

### Collector Box

For use with narrow stainless steel vents (1493 or 1499), with two 3" I.D. wire-supported ventilation hoses. Corrosion-resistant plastic.

Description	Depth	Installation Hole Size	For Use With Vents	Bulk Packaging	Aftermarket Packaging
For two 3" I.D. hoses	4 1/16"	2 7/16" x 16 3/16"	1493, 1499	1343-1	—

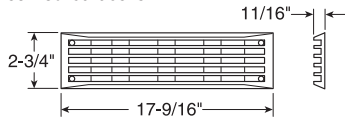


1343



## Venturi Vent

Clean, contemporary, louver design. Corrosion-resistant, paintable ABS plastic. For 3" or 4" I.D. ventilation system. Requires 1341 collector box for 3" system, or 1342 for 4" system. Install with #8 fasteners. Sized for installation even on highly-contoured decks.



Description	For Use With Collector Box	Opening Hole Size	Bulk Packaging	Aftermarket Packaging*
Chrome	1341, 1342	2" x 15 <sup>3</sup> / <sub>8</sub> "	1494-1	1494-5
Black	1341, 1342	2" x 15 <sup>3</sup> / <sub>8</sub> "	1494A1	1494A5
White	1341, 1342	2" x 15 <sup>3</sup> / <sub>8</sub> "	1494F1	—

\*Poly Bag



1494

## Flush Louvered Vent

Canted louvers deflect rain and spray and help conceal the collector box. Installs flush to hull. Drain slots to prevent water accumulation. Black vent is ABS plastic, white vent is ASA plastic. Both are paintable. Install with #8 fasteners. Requires 1341 collector box for 3" system, or 1342 for 4" system.

Description	For Use With Collector Box	Opening Hole Size	Bulk Packaging	Aftermarket Packaging*
Chrome	1341, 1342	2" x 15 <sup>1</sup> / <sub>4</sub> "	1426-1	1426-5
Black	1341, 1342	2" x 15 <sup>1</sup> / <sub>4</sub> "	1423-1	1423-5
White	1341, 1342	2" x 15 <sup>1</sup> / <sub>4</sub> "	1425-1	1425-5
Off-White	1341, 1342	2" x 15 <sup>1</sup> / <sub>4</sub> "	1424-1	1424-5

\*Poly Bag



1426



## Collector Boxes

For use with Venturi, Flush Louvered or Trimline Vents. Corrosion-resistant plastic.

Description	Depth	Installation Hole Size	For Use With Vents	Bulk Packaging	Aftermarket Packaging
For two 3" I.D. hoses	3 <sup>7</sup> / <sub>8</sub> "	2 <sup>1</sup> / <sub>16</sub> " x 15 <sup>9</sup> / <sub>16</sub> "	1494, 1423, 1424, 1425, 1426 1496A,	1341-1	—
For one 4" I.D. hose	5"	2 <sup>1</sup> / <sub>8</sub> " x 15 <sup>5</sup> / <sub>8</sub> "	1494, 1423, 1424, 1496A	1342-1	—



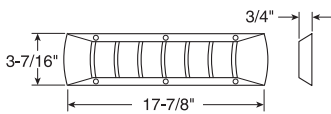
1341



1342

## Plastic Louvered Vent

Constructed of paintable, corrosion-resistant ABS plastic with no sharp edges. For 3" I.D. ventilation system with 1345 collector box. Install with #8 fasteners.



Description	For Use With Collector Box	Opening Hole Size	Bulk Packaging	Aftermarket Packaging*
Chrome Plated	1345	2 1/4" x 16"	1495B1	1495B5
Black	1345	2 1/4" x 16"	1495A1	—
Off-White	1345	2 1/4" x 16"	1495-1	—

\*Poly Bag



1495B

## Collector Box

For use with plastic louvered vent, with two 3" I.D. wire-supported ventilation hoses. Box fastens to vent with screws or pop rivets, then vent fastens to the deck. Corrosion-resistant plastic.

Description	Depth	Installation Hole Size	For Use With Vents	Bulk Packaging	Aftermarket Packaging
For two 3" I.D. hoses	4"	2 7/16" x 16 1/4"	1495	1345-1	—



1345

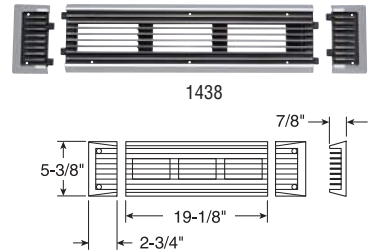


# WATER SYSTEMS / VENTILATION

## Modular Vent

Modular construction to accommodate any ventilation opening size by interlocking two or more center sections. End sections interlock to the center section for a finished appearance. For 4" I.D. ventilation systems using one or more 1348 collector boxes. End sections have two holes for required #8 fasteners.

Description	Color	Opening Hole Size	Bulk Packaging	Aftermarket Packaging
Center Sections	Chrome	2½" x 17¾"	1438-1	—
	White	2½" x 17¾"	1438F1	—
End Sections	Chrome	2½" x 17¾"	1439-1	—
	White	2½" x 17¾"	1439F1	—



## Collector Box

For use with modular vents, with 4" I.D. wire-supported ventilation hose. Corrosion-resistant plastic.

Description	Depth	Installation Hole Size	For Use With Vents	Bulk Packaging	Aftermarket Packaging
For two 4" I.D. hoses	5"	2¾" x 18"	1438, 1439	1348-1	—



1348

## Cowl Ventilator

For use with 3" I.D. wire-supported ventilation hose. Features flexible hose flange that is screwed onto hose, then vent snaps onto the flange. Vent constructed of chrome-plated die-cast Perma-Plate® ZAMAK. Flange is non-corrosive plastic. Installs with #8 fasteners.

Dimensions	Installation Hole Size	Bulk Packaging	Aftermarket Packaging*
5⅞" W x 6" L x 2¼" H (Neck extends 1" below deck)	3¼" to 3½"	1364A1	1364A3

\*Skin Pack



1364

## Twist-On Hose Flange

For use with 3" I.D. wire-supported ventilation hose. Hose installs from topside by turning the flange into the hose spiral, passing the hose through the deck hole, then mounting ventilator. No hose clamps needed. Corrosion-resistant plastic. Four holes for required #10 fasteners.

Dimensions	Bulk Packaging	Aftermarket Packaging*
3½" dia. installation hole size	1405-1	1405-3

\*Skin Pack



1405

## Storage Vent

Use to vent lockers and storage areas. Provides over six square inches of ventilation opening. Will not accept a ventilation hose. Corrosion-resistant plastic. Two holes for required #6 fasteners.

Description	Height	Neck	Flange Dia.	Installation Hole Size	Bulk Packaging	Aftermarket Packaging
Black	1/16"	5/8"	3¾"	3½" to 3⅞"	1353-1	—
White	1/16"	5/8"	3¾"	3½" to 3⅞"	1352-1	—



1353

## Clamshell Vent

Provides a seal and splash protection for vent holes, wire and hose openings. Sizes to fit most common applications. Durable 300 series stainless steel construction. Three holes for required #6 fasteners.

Description	Vent		Max. Hole Size	Hose/Wire Max. Size	Fasteners Size
	Width	Size			
	1¾"	1⅞" L x 1½" H	1"	7/16"	#6
	2¾"	2¼" L x 9/16" H	1½"	9/16"	#6
Description	Description		Bulk Packaging	Aftermarket Packaging*	
Stainless steel	1¾"		66399-1	66399-3	
	2¾"		66400-1	66400-3	

\*Skin Pack, pair



66400