



POWER-STRUT®

POWER-STRUT® Quick Reference Guide

Versatile Solutions from POWER-STRUT®

- Channels, Fittings, & Accessories
- Electrical Raceway Components
- Concrete Inserts
- Brackets & Clamps®
- Available Finish Information
- Recommended installation methods

Step 1



Step 2



Step 3

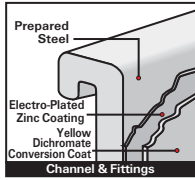


FINISHES

Power-Strut is available in multiple finishes to fit your environmental or cost requirements.

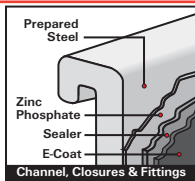
POWER-GOLD™

A Electro-galvanized zinc plate is applied with a cohesive molecular bond to the steel base metal, in compliance with the ASTM B633 standard. Yellow Dichromate is applied over the zinc and results in a gold appearance which acts as a nonporous barrier sealant.



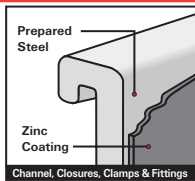
POWER-GREEN®

Channel and parts are cleaned and phosphated. Immediately afterward, a uniform coat of rust-inhibiting acrylic enamel paint is applied by electrodeposition and thoroughly baked.



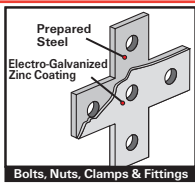
Hot Dip Galvanized

Material is coated with zinc after being roll-formed or after all manufacturing operations are completed, conforming to ASTM specification No. A123 or A153.



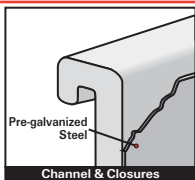
Electro-Galvanized

Fittings and hardware are electrolytically coated with zinc to commercial standards (ASTM-B633 Type III C1).



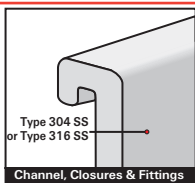
Pre-Galvanized

Material (steel strip) is coated with zinc by hot-dip process prior to roll-forming or press operations. The zinc coating conforms to ASTM A653, Grade 90 General Requirement for Steel Sheet, Zinc-Coated (Galvanized) by Hot Dip Process.



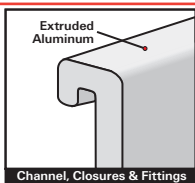
Stainless Steel

Material in accordance with ASTM A240 (Type 304 or type 316).



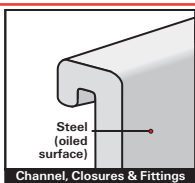
Aluminum

Channel is extruded aluminum in accordance with ASTM B221 Type 6063-T6.



Plain

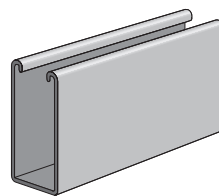
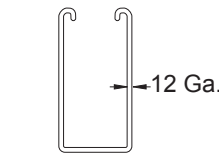
Plain finish designation means that the channel retains the oiled surface applied to the raw steel during the rolling process. The fittings have the original oiled surface of the bar-stock material.



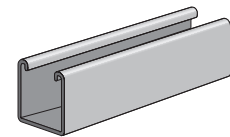
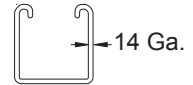
CHANNEL STYLES

Power-Strut channel shown here comes in various depths and gauges to provide a range of strength.

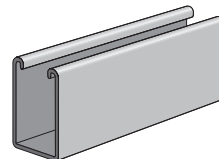
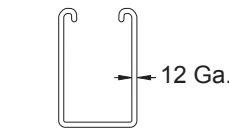
PS 100 – 1 5/8" x 3 1/4"



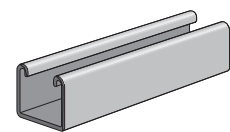
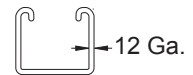
PS 210 – 1 5/8" x 1 5/8"



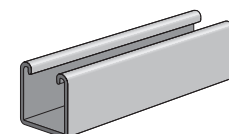
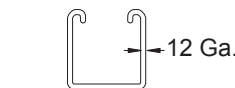
PS 150 – 1 5/8" x 2 7/16"



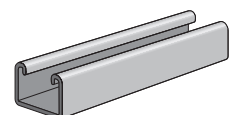
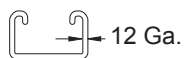
PS 300 – 1 5/8" x 1 3/8"



PS 200 – 1 5/8" x 1 5/8"



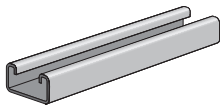
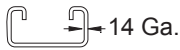
PS 400 – 1 5/8" x 1"



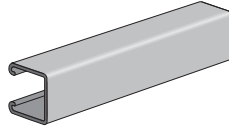
CHANNEL TYPE/SIZES

Power-Strut channel is made from cold-rolled steel in various depths and gauges. This roll forming produces a uniform channel section held to MFMA-2 specifications.

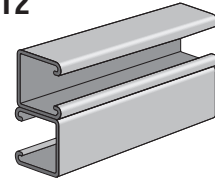
PS 500 – 1 5/8" x 13/16"



Standard Channel



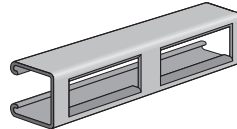
PS 200 2T2



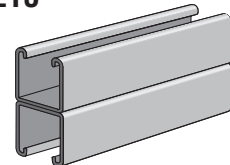
Welded Channel

Slotted Back (SB)

2 3/4" x 7/8" Slots on 3" Centers

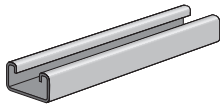
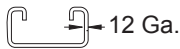


PS 200 2T3



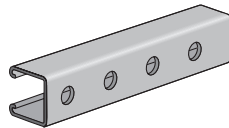
Welded Channel

PS 520 – 1 5/8" x 13/16"

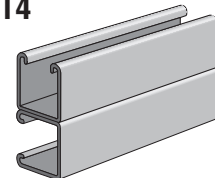


Holes (H)

9/16" Holes on 1 7/8" Centers



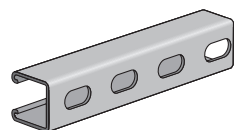
PS 200 2T4



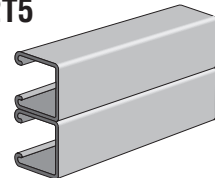
Welded Channel

Elongated Holes (EH)

1 1/8" x 9/16" Slots on 2" Centers

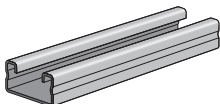


PS 200 2T5

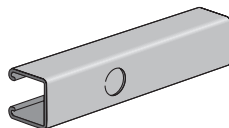


Welded Channel

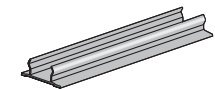
PS 560 – 1 5/8" x 13/16"



Knockouts (K06)



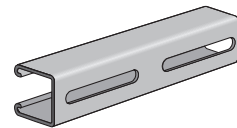
PS 707



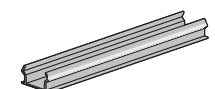
Channel Closure Strip

Slotted (S)

1 3/32" x 3" Slots on 4" Centers



PS 6151



Channel Closure Strip

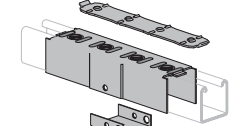
ELECTRICAL

Power-Strut offers a versatile means of supporting lighting, conduits, cable & other portions of an electrical system. Power-Strut is listed as an electrical raceway by Underwriters Laboratories as specified by the NEC

BEAM CLAMPS

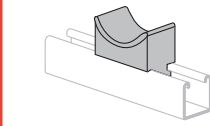
Designed for every loading condition

PS 649...



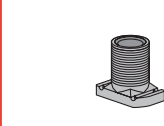
Electrical Joiner

PS 1500



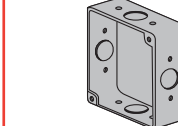
Porcelain Insulator

PS 2625



Wiring Stud Nut

PS 2660



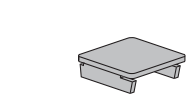
Junction Box

PS 85



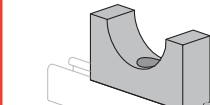
Rod Support

PS 655...



End Cap

PS 1510



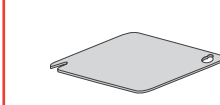
Cable Saddle

**PS 2631,
PS 2631D**



Fixture Hanger

PS 2661



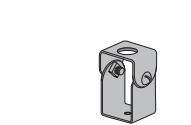
Junction Box Cover

PS 86



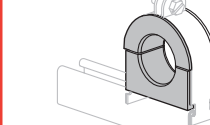
"C" Clamp

PS 658, PS 659



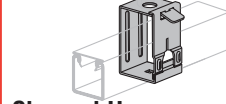
Channel Hanger

PS 1610



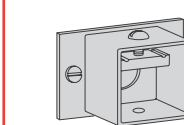
Cable Clamp

**PS 2632,
PS 2632D**



Channel Hanger

PS 2662 A



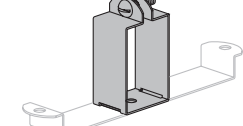
Hub Assembly

PS 93



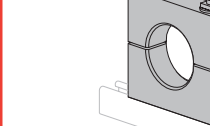
Universal "C" Clamp

PS 702...



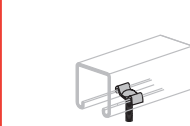
Fixture Hanger

PS 1801



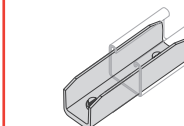
Cable Clamp

PS 2636



Fixed Stud Nut

PS 2800...



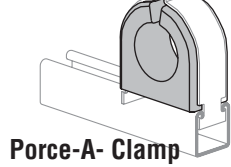
Inside Strut Joiner

PS 94



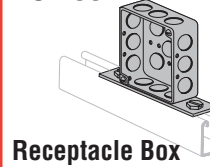
Wide "C" Clamp

PS 722



Porce-A- Clamp

PS 2094



Receptacle Box

PS 2637



Fixture Nut

PS 3301



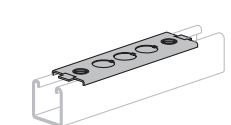
Fixture Hanger

PS 95



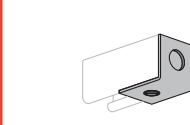
"C" Clamp

PS 791



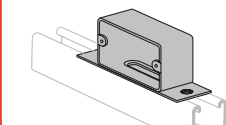
Adapter Plate

PS 2511...



End Cap with Knock-Out

PS 2639



Outlet Box



PS 135X



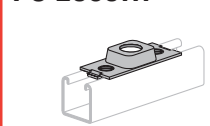
Light Duty Beam Clamp

PS 803



Fixture Wiring Nipple

PS 2560...



Connector Fitting

PS 2640



Wire Retainer



PS 685



Beam Clamp

PS 686



Beam Clamp

PS 855



"I" Beam Clamp

Electrical/Clamps/Brackets

PIPE & CONDUIT CLAMPS

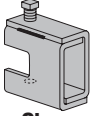
from light to heavy duty.

Conduit and O.D. Tubing clamps formed from punch press dies and are available in a wide variety of sizes.

BRACKETS

Pipe, shelf, or fitting and channel brackets designed to eliminate field fabrication and to speed installation.

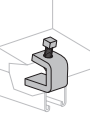
**PS 858,
PS 865**
Hvy. Duty Beam Clamp



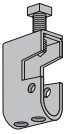
PS 871
Safety Anchor Strap



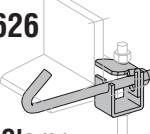
**PS 907,
PS 998**
"I" Beam Clamp



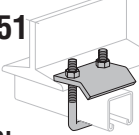
PS 2622
Beam Clamp



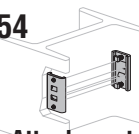
PS 2626
Beam Clamp



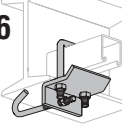
PS 2651
Beam Clamp



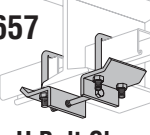
PS 2654
Column Attachment



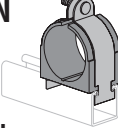
PS 2656
U Bolt Clamp



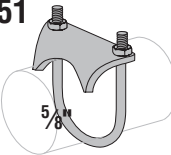
PS 2657
Double U Bolt Clamp



**PS 004T THRU
PS 106N**
Cush-a-Clamp



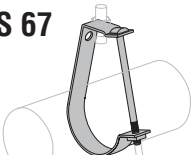
PS 51
Electrical Joiner



PS 52E
Par. Pipe & Conduit Clamp




PS 67
Conduit Hanger




PS 69, PS 70
E-Z Grip Hanger



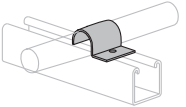
PS 270
Conduit Clamp



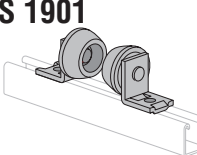
PS 1000
EMT Conduit Clamp



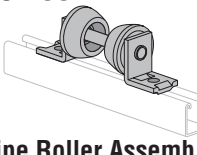
PS 1450
One Hole Clamp



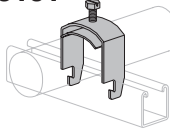
PS 1901
2 Piece Pipe Roller



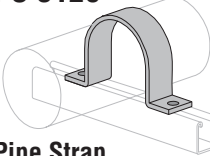
PS 1902
Pipe Roller Assemb.



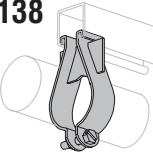
PS 3101
Cable & Conduit Hanger



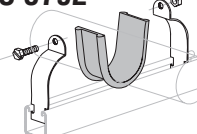
PS 3126
Pipe Strap



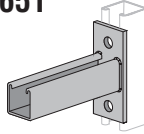
PS 3138
Parallel Pipe Clamp



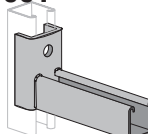
PS 3792
Power Wrap



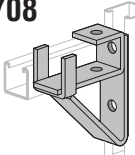
PS 651
Channel Bracket



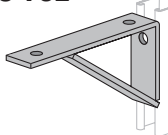
PS 661
Channel Bracket



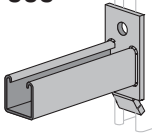
PS 708
Channel Bracket



PS 732
Shelf Bracket



PS 808
Channel Bracket



PS 809
Dbl. Channel Bracket



PS 825 R or L
Single Pipe Axle Support



PS 826
Dbl. Pipe Axle Support



PS 838 R or L
Shelf Bracket



PS 3282
Channel Bracket



FITTINGS

Power-Strut has a wide variety of Fittings to meet all of your application requirements. All Power-Strut fittings are formed in punch press dies from mild, pickled & oiled, bar or strip steel. Plain or electro-galvanized fittings meet the requirements for ASTM k575 & A-576, or ASTM A-36.

PS 601  2 Hole Splice Plate	PS 613  "U" Support	PS 669  12 Hole Triple Wing C.	PS 719  Flat Angle Plate	PS 926  Strut Brace
PS 602  3 Hole Splice Plate	PS 616  4 Hole Splice Clevis	PS 678  3 Hole "U" Support	PS 745  3 Hole Corner Angle	PS 929  "U" Support
PS 603  2 hole End Angle C.	PS 619  Square Washer	PS 679  "U" Support	PS 781  4 Hole Open Angle C.	PS 978  "U" Support
PS 604  2 Hole Corner Angle C.	PS 624  2 Hole Closed Angle C.	PS 704  Slotted Joiner	PS 793  4 Hole Closed Angle C.	PS 2119  "U" Support
PS 605  3 Hole Corner Angle C.	PS 633  2 Hole Open Angle C.	PS 710  "U" Support	PS 888  4 Hole Splice Plate	PS 2128  L or R, 4 Hole Corner Connector
PS 606  3 Hole Corner Angle C.	PS 665  4 Hole Dbl. Corner C.	PS 712  Cross Plate	PS 913  10 Hole Dbl. Wing C.	PS 2504  Guided Square Washer
PS 607  4 Hole Corner Angle C.	PS 667  8 Hole Dbl. Corner C.	PS 714  Tee Plate	PS 922  L or R, 2 Hole Corner Connector	PS 2521  2 Wheel Trolley
PS 611  Zee Support	PS 668  6 Hole Triple Wing C.	PS 718  Flat Angle Plate	PS 923  5 Hole Dbl. Wing C.	PS 2522  4 Wheel Trolley

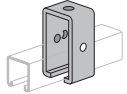
FASTENERS

Power-Strut nuts, bolts, and threaded rod Work with all your strut needs

CHANNEL NUTS

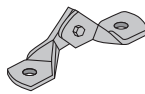
Channel nuts are Cold Form with 6 sharp teeth, then case hardened.

PS 2528



Trolley Beam Std. Support

PS 9402



2 Hole Hinge Connector

PS 83



Hex Nut

PS 211



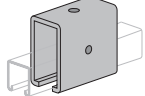
Lock Washer

PS LS



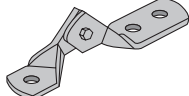
Clamp Nut with Long Spring

PS 2528-1



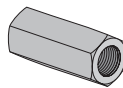
Trolley Beam Hvy. Support

PS 9403



3 Hole Hinge Connector

PS 135



Rod Coupling

PS 230



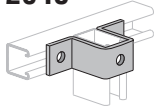
Fender Washer

PS NS



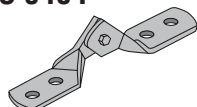
Clamp Nut no Spring

PS 2648



"U" Support

PS 9404



4 Hole Hinge Connector

PS 146



Threaded Rod

PS 6024



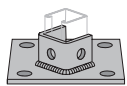
Hex Screw

PS NS S



Shallow Clamp Nut no Spring

PS 3013



Post Base

PS 202



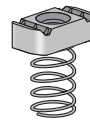
Eyelet

PS 6064



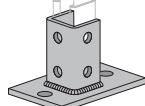
Square Set Screw

PS RS



Clamp Nut with Long Spring

PS 3025



Post Base

PS 203



Linked Eyelet w Stud

PS 6072



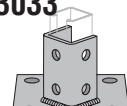
Round Head Screw

PS SS



Clamp Nut with Short Spring

PS 3033



Post Base

PS 204



Linked Eyelet

PS 6075



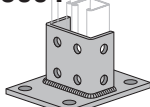
Slotted Hex Screw

PS TG



Top Grip Nut

PS 3064



Dbl. Column Post Base

PS 205



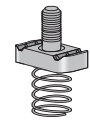
Eyelet with Stud

PS 6108



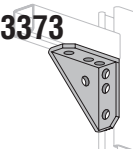
Square Nut

PS 517



Channel Nut with Stud

PS 3373



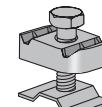
Univ. Corner Connector

PS 209



Flat Washer

PS 3500

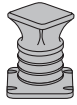


Seismic Rod Stiffener

CONCRETE INSERTS

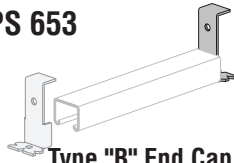
A selection of heavy-duty to light-duty "continuous" & "spot" concrete inserts is available for use in pre-cast, pre-stressed or poured-in-place concrete floors, walls or ceilings.

PS 152



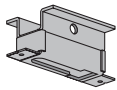
Insert

PS 653



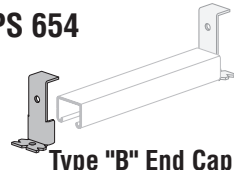
Type "B" End Cap

PS 285



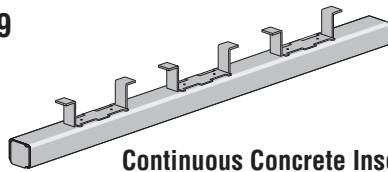
Lt. Weight Concrete Insert

PS 654



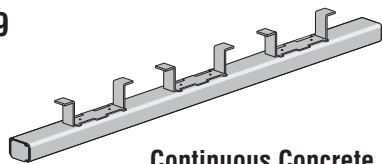
Type "B" End Cap

PS 349



Continuous Concrete Insert (1 5/8" x 1 3/8")

PS 449



Continuous Concrete Insert (1 5/8" x 1")

POWER-STRUT VERSATILITY, EASY AS 1, 2, 3



1 Insert the clamping nut anywhere along the continuous slot channel. A 90° clockwise turn positions the nut's grooves and teeth with the inturred channel edges.



2 The Power-Strut fitting provides the connection of channels.



3 Tighten the bolt(s) to secure the connection.

VERSATILE SOLUTIONS . . .

Power-Strut with its highly rated family of framing support solutions and accessories offers you:

- A variety of channel types produced in steel, aluminum, or stainless steel
- Products available in multiple finishes
- Aickinstrut Non-Metallic Framing System also available
- Widest selection of Components
- Customer and technical support team
- A range of shipping options
- Quick Service

Here you'll learn more about Power-Strut products, accessories, and their installation.

Lets Talk Strut!

KEY PRODUCTS

Below is a list of Power-Struts key products. These products are well stocked and available on short notice.

Key Channel and Fittings

- PS200 EH - 1 5/8" x 1 5/8", 10' Channel
- PS500 EH - 1 5/8" x 1 3/16", 10' Channel
- PS RS - Clamp Nut with Long Spring
- PS603 - 2 Hole End Angle
- PS607 - 4 Hole Corner Angle
- PS9404 - 4 hole Hinge Connector

Key Brackets and Clamps

- PS 1100 - Pipe Clamps
- PS 1300 - Tubing Clamps
- PS270 - Conduit Clamp
- PS651 - Channel Bracket
- PS106N - Cush-a-Clamp Assembly U-Bolt
- PS732 - Shelf Bracket

Other Key products

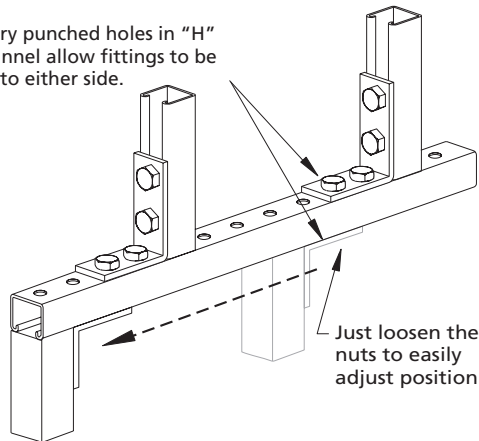
- PS2094 - 4" Receptacle Box with Knock-outs
- PS2803 - "Cross" Inside Strut Joiner
- PS712 - Cross Plate
- PS349 & PS449 - Concrete Inserts
- PS3373 - Univ. Corner Connector
- PS146 - Threaded Rod

GENERAL INFORMATION

Here are some examples of easy to create support structures. Use eye and hearing protection when cutting and fitting channel.

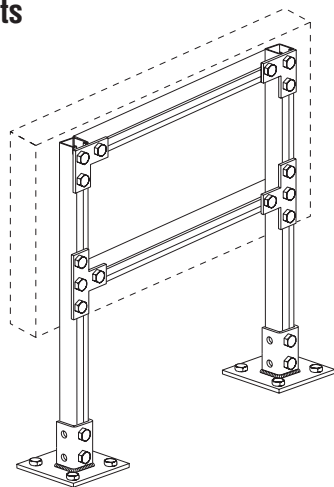
Standard Channel and Fitting Assembly

The factory punched holes in "H" series channel allow fittings to be attached to either side.



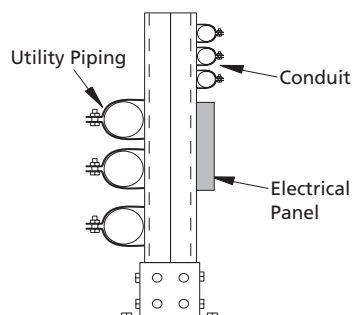
Electrical Panel Supports

Metal framing is ideal for mounting electrical or telecommunication panels. It allows you to create a floor stand, suspend panels from an overhead beam or even attach panels to adjacent structural steel. Bracing may be added for heavier load requirements.



Floor Mounted Stand

Island stands allow you to mount equipment or piping on both sides in trenches and in service aisles.



OVERVIEW, LOAD, AND ORDERING INFORMATION

This is an reference overview only. Always contact your local representative to make sure your ordering the correct products and accessories.

Overview and Load Information

The Power-Strut metal framing system can be regarded as a basic building material. Our metal framing system is an erector set concept, using channel and fittings to solve many applications.

You can conceal metal framing in the basic structure of a building or run it along the surface of walls, ceilings and floors. An endless array of fittings provide freedom to work at virtually any angle along any surface to shape a support system that fits your exact needs. Available finishes include hot-dipped galvanized, pre-galvanized, electro-galvanized and painted, along with material choices of steel, stainless steel and aluminum.

Beyond its versatility as a basic building material, metal framing is popular for more exotic applications such as clean rooms, satellite dish supports, x-ray supports, storage racks, theater screens, tunnel stanchions and offshore platform catwalks. While the uses of metal framing are truly unlimited, they fall into three major categories.

Power-Strut is an excellent solution in;

- **Electrical Lighting and Raceway Systems**
- **Mechanical Systems That Reduce Costs**
- **Mechanical Support of HVAC**
- **Plumbing and Fire Protection Systems**
- **OEM Components and Maintenance**

With over 8000 products it would be impossible to list all load information here. Load specifications are listed in the Power-Strut Engineering Catalog or is available from you local representative.

Ordering Information

For ordering information please contact your local Power-Strut sales representative.

For our quick list of available sales representatives go to our website. The regional sales representatives are list by state and can be found at www.alliedeg.com.

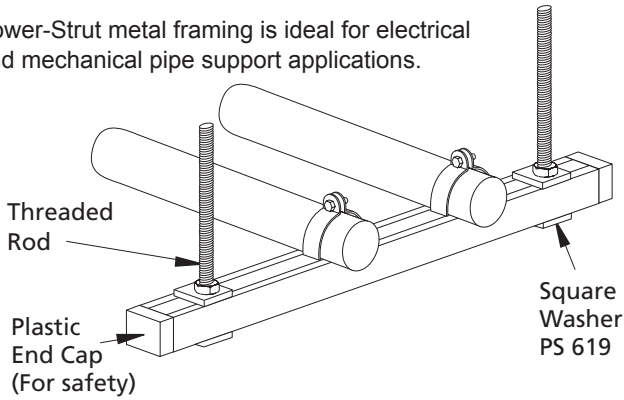
If you can't find a local representative, or have a technical questions call us at **800-882-5543**.

OVERHEAD SUPPORTS

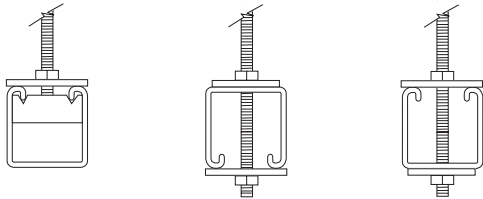
Here are examples of proper ways to install overhead support systems. It is recommended, for safety reasons that overhead installations should require two technicians whenever possible.

Trapeze Support System

Power-Strut metal framing is ideal for electrical and mechanical pipe support applications.

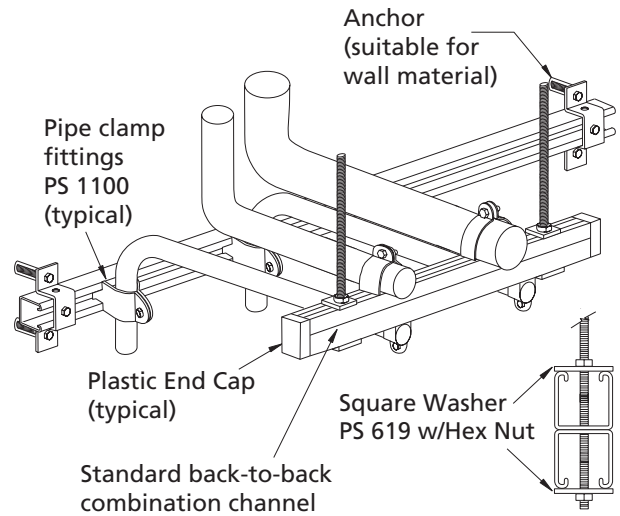


Acceptable Methods to Hang Channels

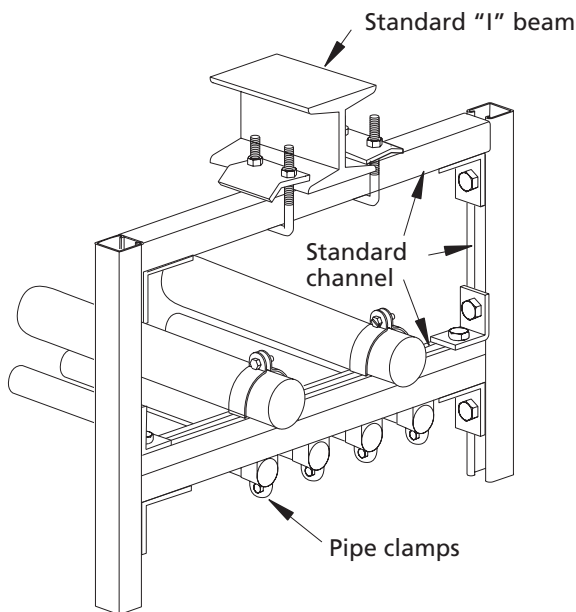


Pre-slotted channel allow through channel connections.

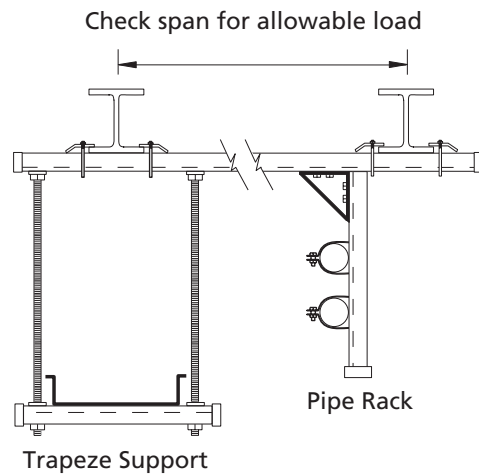
Vertical to Horizontal



Ganged Pipe Support



Overhead Multi-Use Support Systems Using Channel Attached to "I" Beams

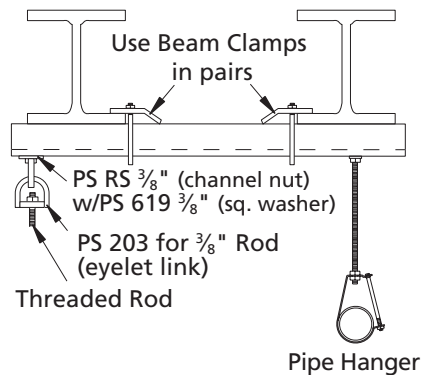


WALL MOUNT

Wall mounting is an optional way to install Power-Strut in locations where overhead support space is limited.

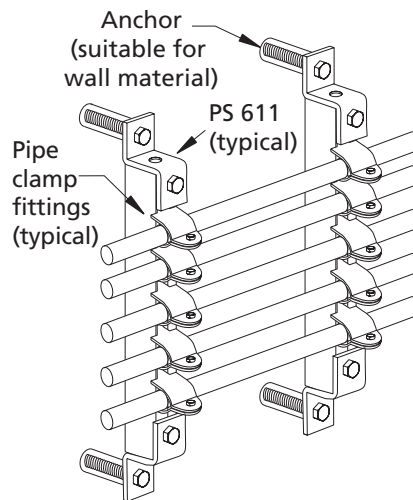
Supports for Threaded Rod Attachments Between Beams

Select channel size based on load requirements.



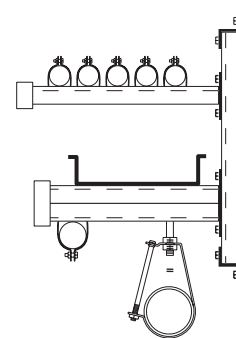
Organize & Control

Versatile Power-Strut installation of utility piping means that expansion is just a matter of inserting another pipe clamp!



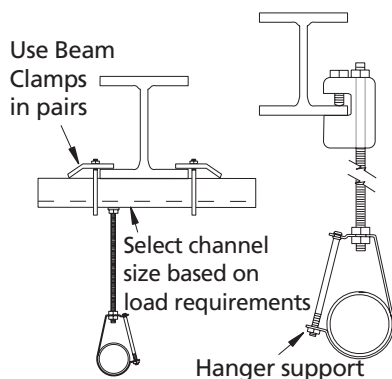
Brackets

Stock brackets are available in lengths from 6" to 36".



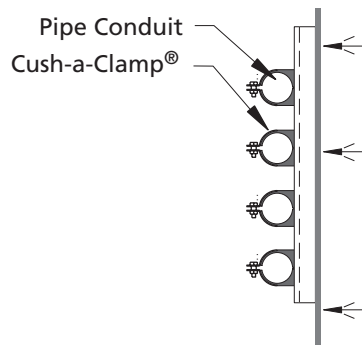
Supports for Threaded Rod Attachments to Single Beams

Versatile Power-Strut installation of utility piping means that expansion is just a matter of inserting another pipe clamp!

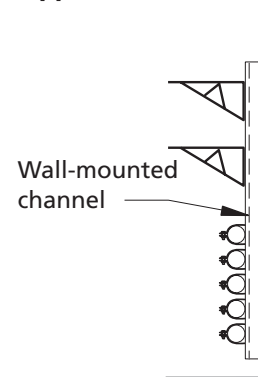


Cushioned Clamps

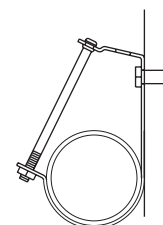
Improperly clamped tubes/pipes invite line failure. Power-Strut's Cush-a-Clamp® cushioned clamp provides protection against vibration, shock, surge noise and temperature variations.



Multi-Shelf or Utility Support



Wall-Mounted Single Lines

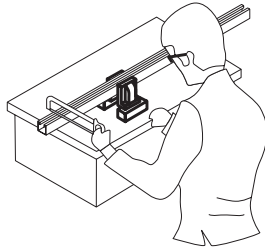


RECOMMENDED METHODS

Here are recommended methods to use when cutting and fitting channel. Please use eye and hearing protection.

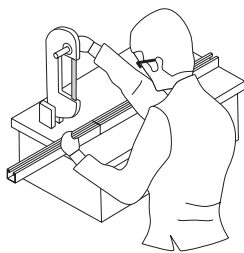
Ordinary Hacksaw

Using a hacksaw is a safe and accurate way for cutting any channel to the needed length.



Electric Band Saw

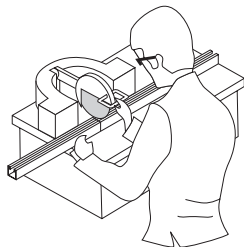
A table top electric band saw is a fast and accurate way of cutting channels to size. However, use caution since the saw blade may leave slightly rough or burred edges.



Cut-Off Saw

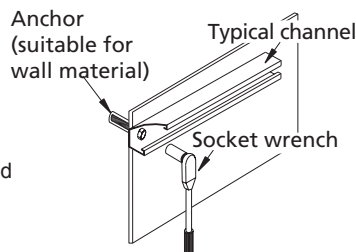
Low RPM cut-off saws with abrasive blades provide superior cuts.

Power table saws with carbon blades are not recommended since the blades cause large burrs and make handling the channel dangerous.



Wall Anchor

NOTE: For commonly used bolts (e.g., 3/8"), most standard socket heads will fit into the channel opening. For 1/2" or larger bolts, a special socket head must be used.

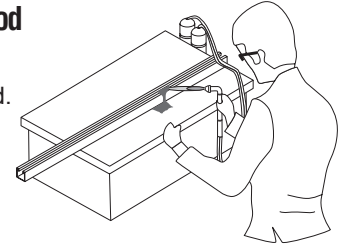


WARNINGS INFORMATION

Below are a few things not to do when you are cutting or working with channel.

Torch – Do not use this method

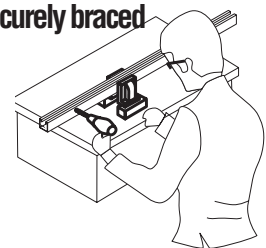
Use of a torch for cutting channel is not recommended. This technique is not accurate and can weaken the channel.



Hole Drilling – Make sure piece securely braced

Field drilling may be necessary for certain applications.

Improper drilling (e.g., holes too large, holes too close together, holes near bends) may cause structural weakness.



POWER-STRUT®

16100 S. Lathrop Avenue, Harvey, IL 60426
Tel. 800-882-5543
Fax 708-339-0615
www.alliedeg.com/powerstrut

ALLIED ELECTRICAL™ Group

• Power-Strut® Metal & Fiberglass Framing • Allied Tube & Conduit • AFC Cable Systems® • Cope® Cable Tray

Power-Strut, Cush-A-Clamps, Power-Angle, Cope, Allied Tube & Conduit, AFC Cable Systems, and Tyco are trademarks or registered trademarks of Tyco International and/or its affiliates in the United States and in other countries. All other brand names, product names, or trademarks belong to their respective owners.