



## GENERAL INSTRUCTIONS FOR LOCKING LUXURY VINYL FLOORING

GOOD VIBRATIONS  
SOUTHERN EXPRESSIONS  
TIMELESS CHARM

### RECOMMENDED TOOLS AND MATERIALS

- Safety glasses
- Measuring tape and square
- Utility knife
- Chalkline
- Embossing leveler/floor patch (if necessary)
- Other tools and materials may be required depending upon the substrate.
- Beaulieu Acoustical Underlayment (optional). Contact Technical Services at 800-944-2840 or [tek.services@beaulieugroup.com](mailto:tek.services@beaulieugroup.com) for more information.

### ACCLIMATION

Acclimation is a required procedure prior to installation of Luxury Vinyl Flooring either on the "job site" or in "similar job site conditions". Store the UNOPENED BOXES in the room where the floor is to be installed for at least 48 hours prior to installation. HVAC systems must be on and set between 65° - 85° F (18.3° - 29.4° C).

### SUITABLE SUBSTRATES

Beaulieu Luxury Vinyl Flooring can be installed on most existing floors including but not limited to APA (The Engineered Wood Association) approved flooring grade underlayment, PVC and concrete floors, existing solid resilient that is well bonded (no more than one layer), ceramic tile, terrazzo, marble, and quarry tile. All carpeting and padding should be removed. Make sure that the surface is clean, dry and flat within 3/16" in 10 feet. (4.76 mm in 3.04m). Supporting floors must be rigid as too much deflection can result in a failed installation. Luxury Vinyl Flooring can also be installed over radiant heated substrates that will not exceed a maximum floor temperature of 84° F (29° C).

Beaulieu Luxury Vinyl Flooring should not be installed over existing plank floors, existing cushioned-backed vinyl flooring, asphalt based floors, carpet, self-adhering plank or tile, laminate or other floating flooring, or structurally damaged concrete.

### SUBFLOOR PREPARATION

- Caution: If you plan to remove old resilient flooring material or any type of old adhesive, please be aware that it may contain asbestos fibers or crystalline silica; therefore, avoid creating dust. Inhalation of such dust is a cancer and respiratory tract hazard and local regulations may require professional removal. Instructions for the removal of old flooring materials and adhesives may be found in the RFCI Recommended Work Practices for Removal of Resilient Floor Coverings. You may contact the Resilient Floor Covering Institute at 706-882-3833 or [www.rfci.com](http://www.rfci.com)
- Substrates must be free of contaminants such as dirt, grease, wax, oil, paints, varnish, curing sealers and compounds, old adhesives, solvents and other foreign matter.
- The surface should be flat within 3/16" in 10 feet (4.76mm in 3.04m) using the appropriate materials to level the

substrate.

- All construction seams, expansion joints, and holes should be filled level with the surrounding surface to eliminate telegraphing of such irregularities. For more information see Patching & Leveling section.
- It is recommended that all moldings such as wall base and/or quarter round be removed for best results.
- Any looseness of the substrate must be secured.

### **PATCHING & LEVELING**

Use only cement based patching and leveling compounds. Check with patching and leveling compound manufacturers for curing times. Check moisture levels before starting installation to ensure moisture levels are within guidelines outlined in the Concrete Slab section.

The contractor or owner is responsible for cure time, moisture content testing, and the structural integrity of any leveling or patching compound used.

### **EMBOSSING LEVELERS**

When installing over an existing resilient flooring material, an embossing leveler may be required to prevent the existing material pattern from telegraphing through the new material. Embossing levelers are for sheet goods with textures that could telegraph through the LVF and be visible on the surface. Note: Existing resilient flooring should be in good condition, thoroughly bonded to the substrate, and all waxes and or finishes should be removed before applying embossing levelers or adhesives.

### **CONCRETE**

All concrete (new and old) must be tested for moisture and pH levels. Moisture vapor emission rate should not exceed 5 lbs/1000 sq. ft. /24 hours per ASTM F-1869 Calcium Chloride. Moisture may also be tested according to the test method ASTM F 2170 using the in situ probes; when tested according to internal relative humidity RH should not exceed 75%, pH levels should be between 5 – 9. **IF MOISTURE IS PRESENT, DO NOT INSTALL FLOOR, corrective measures must be taken. Do not install when hydrostatic pressure or alkaline conditions are evident.** New concrete should be properly cured.

### **EXISTING RESILIENT FLOORS**

When installing Beaulieu Luxury Vinyl Flooring over existing resilient flooring ensure that the existing sheet good or tile product is in good condition, and that it was installed in the full spread method and is properly secured. Beaulieu's LVF can be installed over one layer of non-cushioned sheet good flooring. It may be best to remove the present floor and prepare the structural floor for a fresh application of the Beaulieu Luxury Vinyl Flooring.

### **MARBLE, QUARRY TILE, TERRAZZO, CERAMIC TILE**

Fill any low areas, chips and grout joints that may telegraph through the new flooring.

### **WOOD SUBSTRATES**

Wood floors must be a minimum of 5/8" (16 mm) thick APA approved grade tongue and groove plywood or 23/64" (9 mm) OSB, free from spring and deflection. Wood substrates must be flat within 3/16" in 10 feet (4.76mm in 3.04m). All fastener indentions and joints should be level and smooth using appropriate patching compounds.

### **PRIOR TO INSTALLATION**

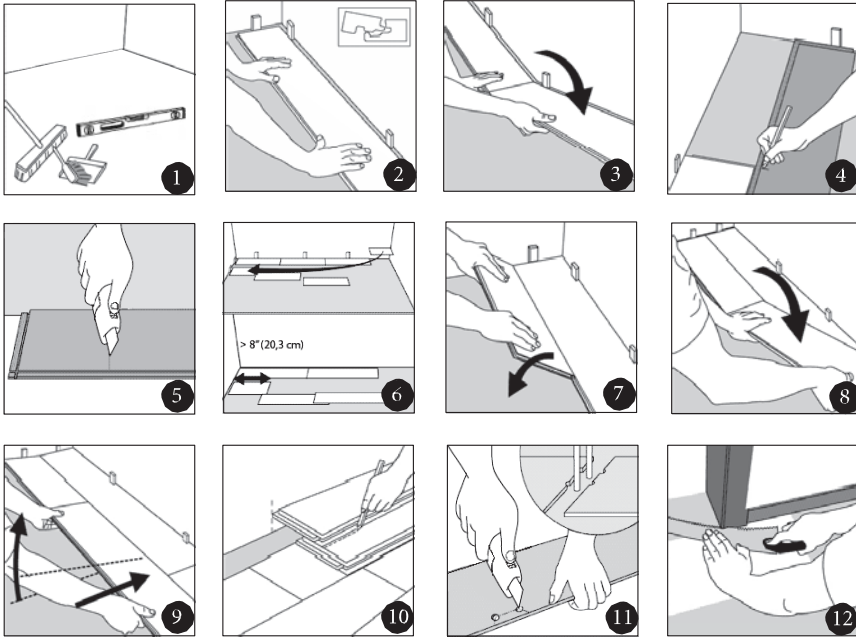
- Cartons must be stored horizontally at all times
- Protect carton corners from damage.
- Inspect all planks/tile for visible defects and damage before and during installation. Do not install damaged planks/tile. Beaulieu will not accept responsibility for claims on flooring installed with obvious defects. During installation, inspect the groove area and remove any debris that may prevent proper assembly of planks/tile.
- Remove thresholds and baseboards
- Undercut doorway moldings to the thickness of the flooring (if applicable).
- Determine in which direction the planks will be installed. To make the room appear larger or if installing in very small rooms or hallways, it is preferable to lay the planks/tile parallel to the longest room dimensions.
- Carefully measure the room to determine squareness and also to determine the width of the last row of planks/tile. If the width of the last row of planks/tile is less than 2" (50 mm), excluding the tongue, the width of the first row of planks/tile will have to be cut accordingly.
- A minimum ¼" (8 mm) expansion space is required around the perimeter of the room and all vertical objects.
- Ensure that all boxes are the same product and mix planks from different boxes for best results.

## INSTALLATION

1. Begin laying planks/tile from the starting wall and work to the opposing side. The tongue side of the plank/tile should face the starting wall.
2. Place ¼" (6.35 mm) spacers between the short and long side of the planks/tile and the wall. Always position one spacer between the wall and where the planks/tile joins.
3. The end joints of the planks/tile in the first row are assembled by inserting the tongue side into the groove side of the previous plank/tile at a low angle. Gradually lower the plank/tile down flat until the end joint closes, insuring that the plank/tile is perfectly aligned. Install remaining full planks/tile in the first row.
4. The last plank/tile in the first row will need to be cut. Measure the distance between the wall and the surface of the last full plank. Subtract ¼" (6.35 mm) from this measurement to allow for the spacer. If this measurement is less than 6" (15.24cm), the length of the first plank in the row must be cut. The first and last plank/tile in each row must be at least 6" (15.24cm) in length. Planks/tile are cut using a sharp utility knife and a square. Score the surface of the plank with a utility knife, and then snap the plank at the score line.
5. The remaining piece cut off from the last plank in the first row may serve as the first plank in the second row, provided it is at least 6" (15.24cm) long. Always stagger end joints a minimum of 6" (15.24 cm) apart from row to row maintain a random look for plank and a staggered look for tiles.
6. Install the long side of the first plank of the second row. Remember to place a ¼" (6.35 mm) space between the wall and the short side of the plank/tile. Insert the tongue side into the groove side of the previous row at a low angle and lower flat to the substrate.
7. Install the second plank of the second row. Position the long side of the plank/tile with the tongue side overlapping the groove of the planks/tile in the previous row approximately 1/8" (3.175 mm). Then, angle the end joint into the previous plank/tile. Angle the plank/tile up and gently push forward until the plank/tile locks into the previous row. Continue installing remaining planks/tiles in second row. It is important to make sure that the first two rows are straight and square as they can affect the entire installation.
8. Continue working side to side, row by row. Be sure to maintain a 1/4" (6.35 mm) space around all walls and vertical objects and maintain a random look for plank and a staggered look for tiles. End joints for plank a minimum of 6" (15.24cm) and for tile. Remember to offset end joints a minimum of 6" (15.24 cm).
9. After all planks/tile have been installed, remove spacers from perimeter of room.
10. Install transition moldings. Do not fasten any moldings through the flooring. Pre-drill and install quarter round or baseboard molding. Molding must be sufficient size to cover the 1/4" (6.35 mm) space and must be fastened to the wall, not to the flooring.

## IMPORTANT

- Be sure to use Beaulieu tiles/planks of the same color lot for best color matching. Mix tile/plnks from several different cartons to blend minor shade variations.
- Use plywood to cover the top of the flooring when moving heavy furniture or appliances into position.
- Use proper floor protectors under the legs of furniture.
- Beaulieu Locking Luxury Vinyl Flooring is intended to be a floating floor.
- Heavy furnishing loads placed on the locking luxury vinyl floor can pin a locking product down to the substrate which may prevent the product from expanding and contracting evenly, causing side or end separation, peaking or gapping. Beaulieu recommends that any locking Luxury Vinyl Flooring product that has rolling loads or heavy furnishings be glued down.
- Do not nail down Beaulieu Luxury Vinyl Flooring.
- Beaulieu Luxury Vinyl Flooring is intended for indoor use only.
- Beaulieu Luxury Vinyl Flooring is intended as a floor covering only.
- **Do not install cabinets on planks/tile.**
- Post installation temperature should be maintained between 65-85° F (18.3 -29.4° C). Relative humidity should be maintained between 40% and 70%.
- Protect the installation from direct sunlight exposure.



10/24/14