

User Manual

USB 3.0 to VGA



Specification

- Model: HE-008A
- Connectors:
 - 1x USB 3.0(input)
 - 1x VGA Male(output)
- Built-in chips: Fresco Logic FL2000
- Video Converter: USB to VGA (only converter video signal)
- USB bus powered, no external power adapter required
- Support OS:
 - Windows 10/8.1/8/7(32/64 bit)
 - Mac OS (10.12-10.13.3)
 - High Sierra (10.13.4-10.13.6) Clone Mode Only
 - El Capitan (10.11) No Mirror Mode
 - NOT support Linux / Chrome OS
 - Support Surface with INTEL processor ONLY
- Video resolution up to 1080P(1920x1080)@60 Hz (Only operate at 800x600 via USB 2.0 port)
- Material: ABS+PVC cable
- Cable Color: Black

Install the Cable

NOTE: Before you start using the cable, you must install the software drivers that support the cable. Please follow these instructions:

Install the Driver on Windows

1. Download the driver [FL2000-2.1.34054.0.exe](#) to your computer.
2. Once it is downloaded, double click on the driver file to start the installation process.
3. Follow the installation instructions.
4. Once the installation is complete, please restart your computer. (If the driver was not successfully installed, please temporarily turn off real-time antivirus protection, then reinstall it.)

Note: If you are working on a company computer, contact your IT specialist to log in as an Administrator having the rights to install the driver.

Install the Driver on MAC OS

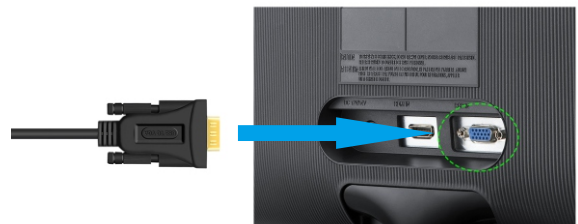
1. Download the driver [Fresco Logic FL2000 Installer.dmg](#) to your computer.
2. Once it is downloaded, open disk image and double-click on "Fresco Logic FL2000 Driver.pkg".
3. Follow the installation instructions.
4. Once the installation is complete, please restart your computer.

Note: If you are working on a company computer, contact your IT specialist to log in as an Administrator having the rights to install the driver.

Connect the Cable

Note: AVOID USB HUB or VIDEO ADAPTER CHAINS (like VGA-to-HDMI, VGA-to-DVI), they would probably cause either blank / blinking screen or cause the cable not to work properly.

1. Connect the VGA male to your display's VGA port, then turn on your monitor.



2. Plug the USB to your computer's USB 3.0 port. Waiting a few seconds, your PC will automatically detect the second monitor and display your PC's desktop screen.



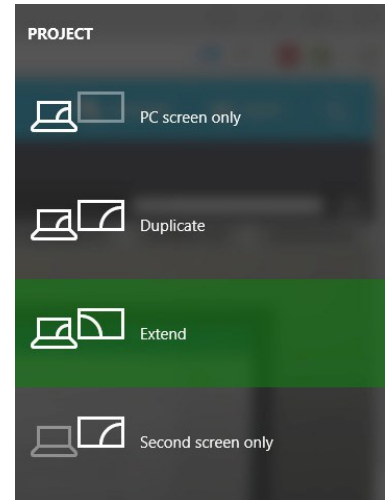
Set up and configure multiple monitors

In Windows 10

Switch between display modes

There are four display modes available in Windows 10, which can be quickly accessed by hitting Windows + P. This will bring up a sidebar with four options. Depending on whether you're on a laptop or desktop PC, either Extend or Duplicate will be selected by default. Here's a quick run down on the differences between each option:

- **PC screen only** — Only the primary monitor is used. Use only display 1 and show nothing on display 2.
- **Duplicate** — Show the entire desktop on both displays. The second or other monitors mirror the primary monitor.
- **Extend** — Both monitors combine to offer an extended desktop. The desktop screen of your PC is extended across all the detected monitors and allows you to have a desktop screen that spans across all monitors.
- **Second screen only** — Use only display 2 and show nothing on display 1. The primary monitor will be disabled and only the second monitor will be used.



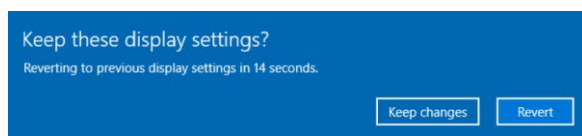
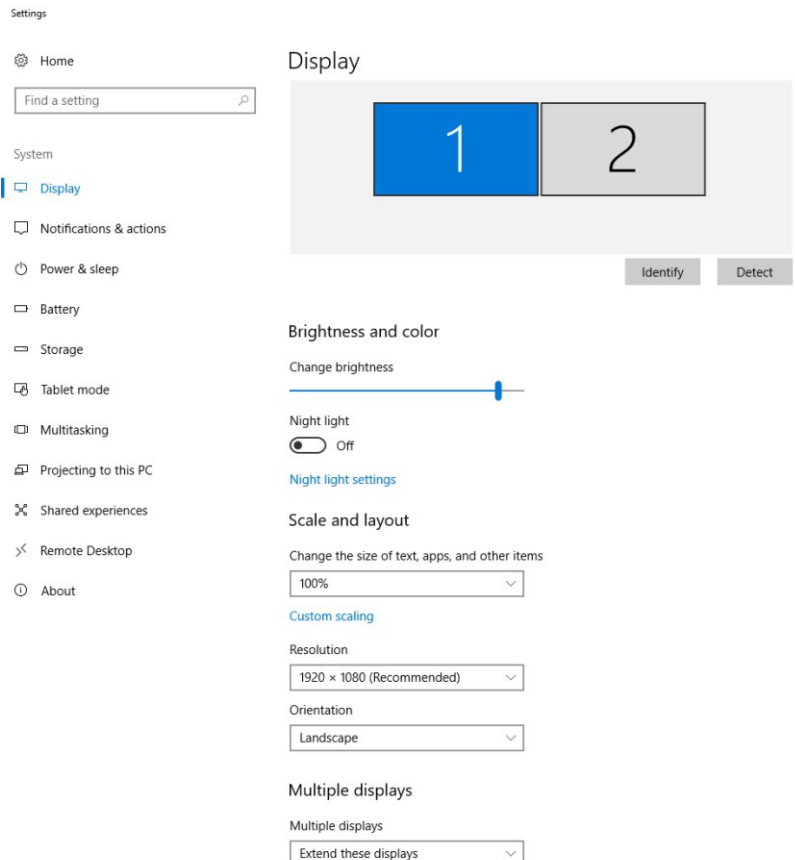
Set or Change the Screen Resolution

The screen resolution of a monitor determines how much information is displayed on the screen. The resolution modes will vary with each display based on the video card, monitor size, video driver and monitor driver where applicable.

By default, Windows 10 will choose the best display settings for your computer based on the monitor and video drivers installed. You can change the screen resolution manually for each monitor that is connected to your computer.

Configuring display settings

1. Right-click an empty area on your desktop, and click **Display Settings**.
2. Click on **Display** on the left pane.
3. Click **Identify** to show numbers on corresponding displays. (1 is the primary.)
4. Rearrange displays by clicking and dragging the numbered boxes.
5. Use the **scaling** drop-down menu or **Custom scaling** to make text and other content larger. (This is ideal for higher resolutions or for people with impaired vision.)
6. In the **Resolution** drop-down menu, select a screen resolution (ex: 1920 x 1080) that you want for the selected monitor.
7. Choose between landscape or portrait to change the selected display orientation.
8. The **Multiple displays** option allows you to switch display modes (as described in the section above).
9. If the selected screen resolution mode is optimal, click **Keep Changes**.



In Windows 8 / 8.1

You can get started with multiple monitors either from the Windows UI or Desktop interface.

For Windows UI:

1. Invoke Windows Charms by swiping in from the right or moving the mouse cursor to one of the right-hand side corners
2. Choose Devices,
3. Select Second Screen.
4. There are four options:
 - **PC screen only** — Only the primary monitor is used. Use only display 1 and show nothing on display 2.
 - **Duplicate** — Show the entire desktop on both displays. The second or other monitors mirror the primary monitor.
 - **Extend** — Both monitors combine to offer an extended desktop. The desktop screen of your PC is extended across all the detected monitors and allows you to have a desktop screen that spans across all monitors.
 - **Second screen only** — Use only display 2 and show nothing on display 1. The primary monitor will be disabled and only the second monitor will be used.

For traditional Desktop mode:

1. Go to the Control Panel and choose Display.
2. Choose Change Display Settings on the left.
3. In the Change Display Settings window, click and drag the virtual monitors to mimic your physical setup.
4. Click OK to finish.

Set or Change the Screen Resolution

Screen Resolution can be adjusted from the Desktop. Invoke Windows Charms by swiping in from the right and choose Start. At the Windows UI Start Screen, enter main Desktop by clicking on the Desktop Title or by pressing the Start Button on the keyboard.

1. Right click on the Desktop and select Screen Resolution
2. Point to Resolution
3. Select your desired resolution
4. Click OK.

To select a Display Mode with Screen Resolution in **Advanced Settings**, follow the steps below:

1. Click on the Advanced Settings link in the Screen Resolution Window.
2. In the Adaptor tab, click on List All Modes.
3. Select a display mode that you would want for the selected display and click OK.
4. Click Apply.
5. If the selected screen resolution or display mode suits your requirement, click Keep Changes.
6. Click OK in the Screen Resolution Window to close it.

In Windows 7

Method 1: Win + P Keyboard Shortcut.

1. Hold down the Windows logo key and press the P key on your keyboard.
2. Select one of the following options:
 - **Computer only** — Only the primary monitor is used. Use only display 1 and show nothing on display 2.
 - **Duplicate** — Show the entire desktop on both displays. The second or other monitors mirror the primary monitor.
 - **Extend** — Both monitors combine to offer an extended desktop. The desktop screen of your PC is extended across all the detected monitors and allows you to have a desktop screen that spans across all monitors.
 - **Projector only** — This setting is typically chosen when your laptop is used as a desktop computer, so you can enjoy the higher resolution of a large external monitor.

Method 2: Screen Resolution Menu.

1. Right-click an empty area on your desktop, and then click **Screen Resolution**.
2. Click the Multiple Displays drop-down list, and then select **Extend These Displays** or **Duplicate These Displays**.
If you cannot see the additional monitor(s) listed, click Detect. If it does not work, try restarting your computer and repeat steps 1 and 2.
 - **Duplicate these displays** — This setting will duplicate your laptop screen image on both monitors based on the monitor with the lower resolution.
 - **Extend these displays** — This setting allows you to move a window from one monitor to the other by clicking the title bar of the window and dragging the window to a new location.
 - **Show desktop only on 1** — This setting is typically chosen when your laptop is used as a desktop computer so you can enjoy the higher resolution of a large external monitor.
3. Click **Identify Monitors** to see which monitor is number 1 and which is number 2; then drag the monitor icons to reorder their positions to match the physical setup you have chosen.
4. Click the **Resolution** drop down menu, and select a screen resolution by moving the slider arrow right or left; then click **OK**.
5. If the new settings are compatible, your computer screen will reappear with the new settings in place. To change display resolution settings back to the previous setting, hold down the **Windows Logo** key and press the **P** key to change the mode to computer only.
6. Click **Yes** if you want to keep the new settings.
7. Restart your computer to ensure that the changes are saved.

Set or Change the Screen Resolution

1. Click Start, right-click the Control Panel icon, and select Open.
2. In the Control Panel window, click Adjust screen resolution under Appearance and Personalization.
3. Click the Resolution: drop down, click and drag the vertical slider control to change the screen resolution, and then click Apply.
4. If the new settings are compatible, the screen will reappear with the new settings.
5. Click Yes if you want to keep the new settings.
6. Restart the computer to ensure that the changes stay in effect.

NOTE: When you set your monitor to a screen resolution that it can't support, the screen will go black for a few seconds while the monitor reverts back to the original resolution.

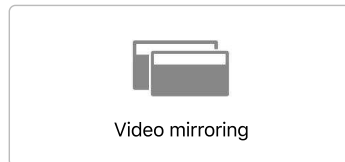
Use external monitors with your Mac

Learn how to connect another display to your Mac and choose how your displays work together.

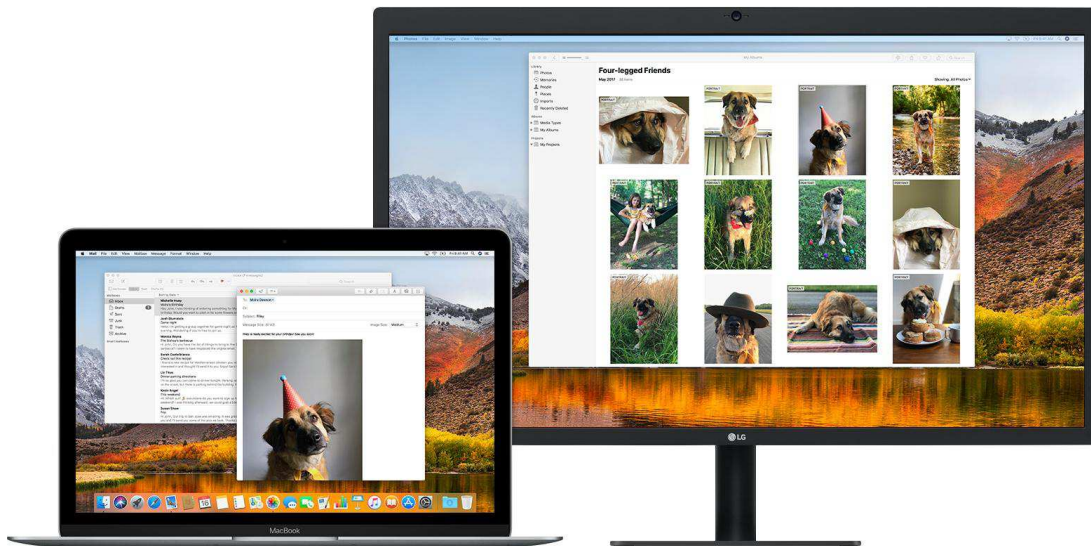
You can set up additional displays with your Mac in several ways. You can make all of your displays mirror each other, or extend your workspace with different apps and windows on each display. If you use an external display with your Mac notebook, you can also use closed-display mode.

Check your requirements

- Check the ports on your Mac and see if you need an adapter.
- Check how many displays your Mac supports: Choose Apple (🍏) menu > About This Mac > Support, then click Specifications. On the web page that appears, the number of displays your Mac supports appears under Video Support.



Use extended desktop mode



Maximize your workspace with extended desktop mode, which lets you enjoy full-screen apps and windows on each monitor. Then, use Mission Control to organize apps and windows across your displays. If your Dock is on the bottom of your screen, it appears on any of your displays when you move your pointer to the bottom edge of your display.

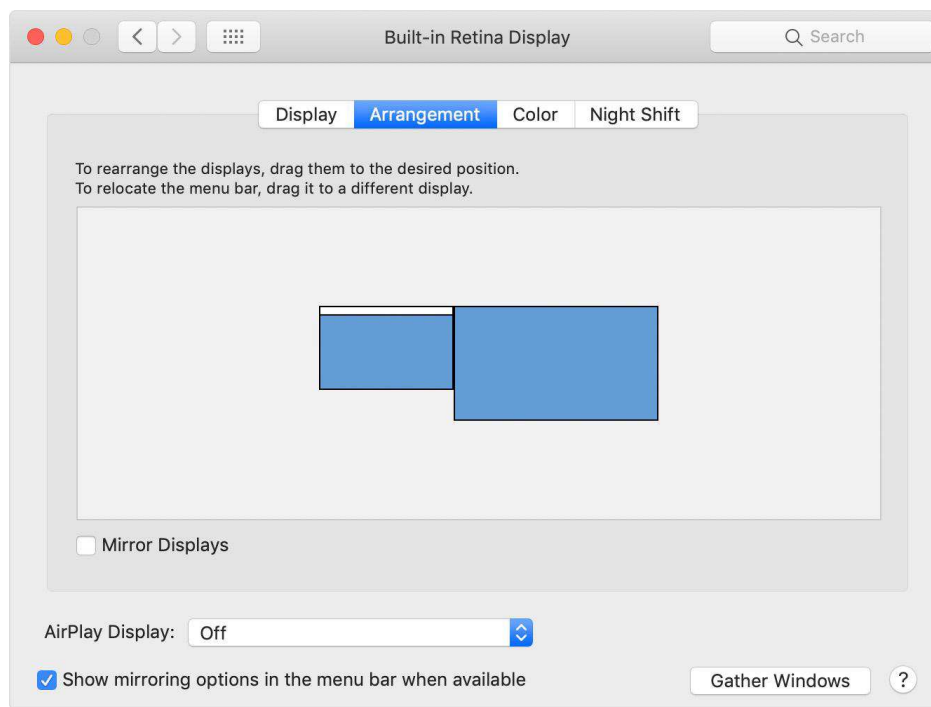
Turn on extended desktop mode

1. Make sure that your external display is powered on and connected to your Mac.
2. Choose Apple (🍏) menu > System Preferences, then click Displays.
3. Select the Arrangement tab.
4. Make sure that the Mirror Displays checkbox isn't selected.

Arrange your displays or change your primary display

So that you can move apps and windows across your displays in one continuous motion, arrange your displays to match the setup on your desk. You can also change your primary display, which is where your desktop icons and app windows first appear. Here's how:

1. Choose Apple () menu > System Preferences, then click Displays.
2. Select the Arrangement tab.
3. Arrange your displays or change the primary display:
 - To arrange your displays, drag one of the displays where you want it. A red border appears around your display as you arrange it.
 - To change your primary display, drag the white bar to another display.



Use video mirroring

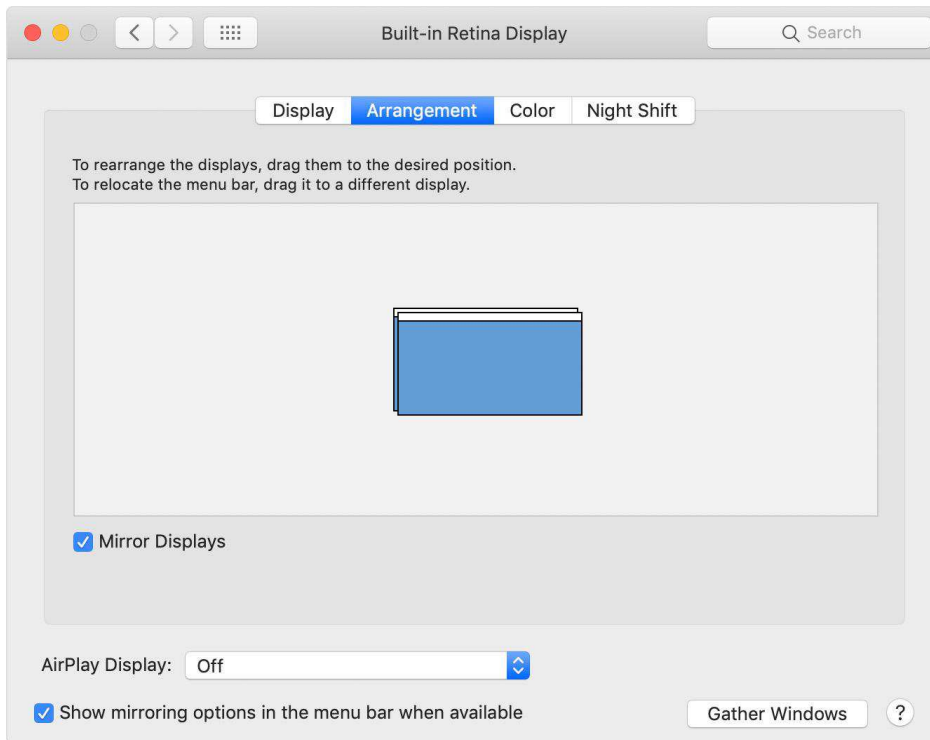
With video mirroring, all of your displays show the same apps and windows.



Turn on video mirroring

1. Make sure that your external display is powered on and connected to your Mac.

2. Choose Apple () menu > System Preferences, click Displays, then select the Arrangement tab.
3. Make sure that the Mirror Displays checkbox is selected.



Troubleshooting

Why is the screen resolution only 800x600?

1. When it connected to the PC's USB 2.0 port, the video resolution will only operate at 800x600. Please try a different port and ensure it's connected at USB 3.0
2. Out-of-date drivers may cause the USB 3.0 to operate at USB 2.0 speed and cause compatibility issues, please upgrade your PC's USB Controller drivers to the latest version.

Why the second monitor's resolution less than 1920*1080?

The resolution you can use depends on the native resolutions your monitor supports. If your second monitor with native resolution lower than 1920*1080, your display screen can only run at the native resolution or lower- assuming you have a monitor with a native resolution 1440*900, when you connect to your computer, then the maximum resolution is 1440*900.

Why does the screen display abnormally or even blank screen?

Please check the following to see if something caused this issue:

1. Check if your system display adapter driver is installed properly.
2. If you have DisplayLink devices installed in your system, please remove the driver from Control Panel\ Programs and Features\ since these kind of devices may influence the performance.
3. If you have the USB to VGA adapter connected to a USB 3.0 Hub or docking station, connect it directly to a USB 3.0 port on your computer instead.
4. Out of date USB3.0 xHCI hosts may have some compatibility issues due to the specification. It could cause either blank/blinking screen, or only low resolutions supported. Please connect the device to the latest USB 3.0 xHCI hosts.

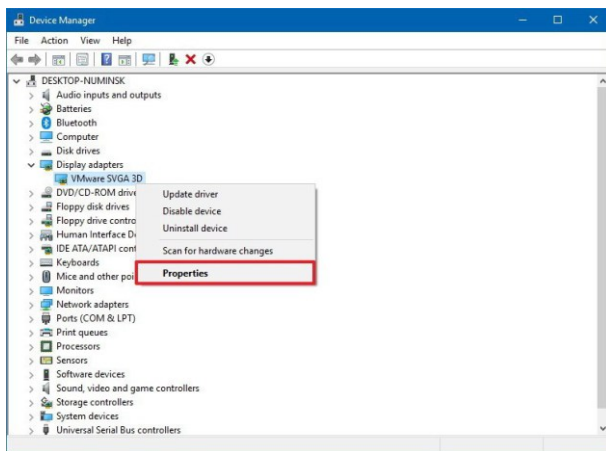
The second monitor not being detected in Windows 10

Usually it's a driver problem. If your video driver is out of date, incorrect or faulty, Windows 10 won't be able to extend or mirror your desktop to your second display. It's also possible that your monitor driver is causing the problem.

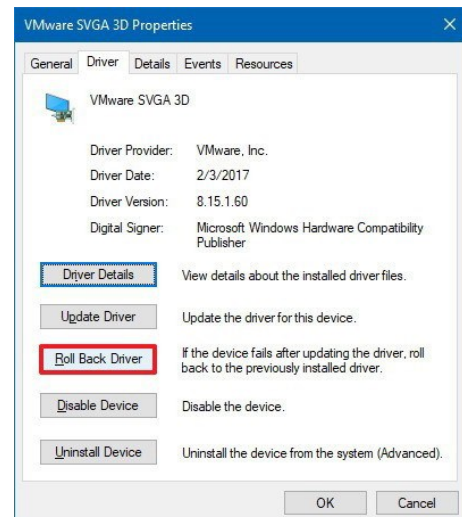
Here are 2 solutions you can try to fix this problem. You may not have to try both of them; try Method 1 first, and if it doesn't work, try Method 2.

Method 1: Roll back to previously installed video & monitor drivers

1. Open **Start**.
2. Search for **Device Manager**, and click the top result to open the experience.
3. Expand the **Display adapters** category.
4. Right-click the device, and select **Properties**.

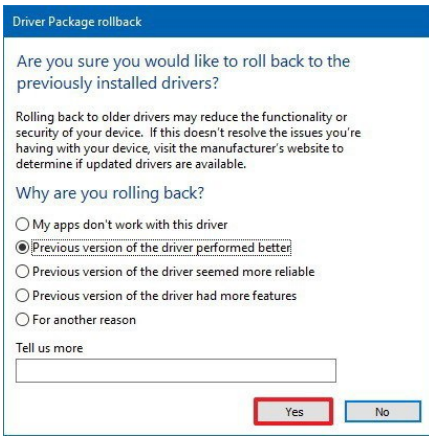


5. Click on the **Driver** tab.
6. Click the **Roll Back Driver** button.



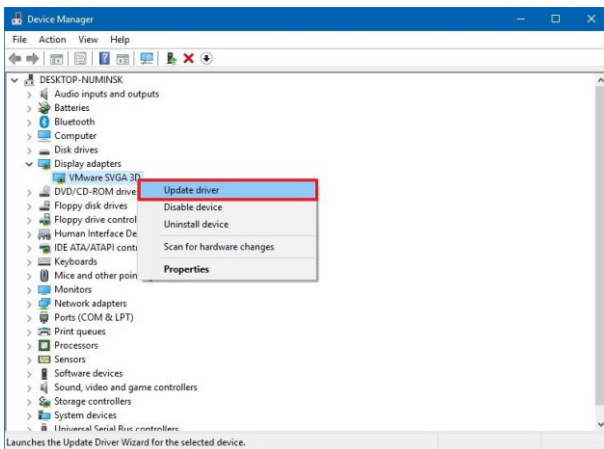
Quick Tip: If the Roll Back Driver button is grayed out, you can't use this option. However, you might be still able to roll back if your device manufacturer support websites allow you to download older versions of the driver.

7. Answer the question why you're rolling back.
8. Click the **Yes** button.

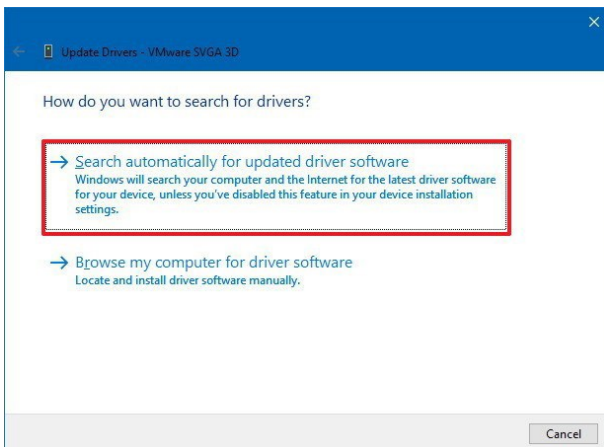


Method 2: Update your video & monitor drivers

1. Open **Start**.
2. Search for **Device Manager**, click the top result to open the experience.
3. Expand the **Display adapters** category.
4. Right-click the device, and select **Update Driver**.





5. Click **Search automatically for updated driver software**.



External display issues? Try these steps

1. Avoid video adapter chains or Hub
Chaining two video adapters together or use USB Hub can act-ually cause issues, If possible, remove other adapters or Hub.
2. Change screen resolution manually
- In you system's settings, play around with the resolution settings until something looks comfortable for your eyes.
- Choose the default resolution. If you're using a scaled resolution already, try setting your display to use the default resolution for the display.
3. The screen resolution only 800x600. Please try a different port an ensure it's connected at USB 3.0 speed.
4. Attach your laptop's power adapter.
Some laptops don't have enough juice to push the extra pixels of an external display, connect the power adapter to give it additional power.
5. Re-set your video connections, make sure the cable is firmly connected.
6. Use Auto-Adjustment of monitor.
7. Check is your computer's brightness turned all the way down.
8. Reinstall or update graphics driver.
9. Check for software updates for your software.

The adapter built-in Fresco Logic Chips FL2000, if you have any issue, please email us at support@hamkot.net or visit the website <https://support.frescologic.com/portal/kb> for more information.

-  **SAFETY FIRST.** To avoid danger of suffocation, keep the plastic bag away from babies and children.
-  Our products and packaging are made from recyclable material, support environment protection and take care of our unique earth.

Made in China

