



Innovation
that excites

NISSAN X-TRAIL



[Exterior Design](#) | [Interior Design](#) | [Technology & Performance](#) | [Style & Accessories](#) | [Technical Specifications](#) | [CO2 emissions](#) | [Further Information](#) | [Commitments](#)

[Print](#) | [Close](#)

REQUEST A TEST DRIVE

SHARE the joy of life's adventures in a bigger, bolder crossover that has everything you need to thrive: muscular sculpted styling, solid capabilities, next-level technologies to keep you in control and all the space, comfort and flexibility you need to enjoy your action-packed trips with the kids. So where to next? Call up directions and your favourite driving music at the touch of a button and go explore. The 2017 Nissan X-TRAIL: built to build **FAMILIES**.



[REQUEST A TEST DRIVE](#)



NISSAN  INTELLIGENT MOBILITY

NEXT-LEVEL TECHNOLOGY FOR A CONFIDENT AND ENERGISING DRIVE

Nissan Intelligent Mobility is redefining the way we power, drive and integrate cars in the world around us. It's bringing you and your X-TRAIL closer together for a more confident, more exhilarating ride. It's making your journey more personal through advanced connectivity and empowering you through progressive technologies. It's enhancing the joy of being behind the wheel and turning the world into a safer place everyday.





BREATH-taking FROM TOP TO BOTTOM

Want to share an inspiring view on a starry night? Need a cosy refuge on a chilly morning? X-TRAIL makes sure you're well taken care of.

To design their zero-gravity-inspired seats with spinal support, Nissan's engineers looked to the cosmos. They recreated the relaxed posture of astronauts floating in space by designing an articulated front seat that supports you from the pelvis to the chest optimising the blood flow, and seat cushions that provide better pressure distribution. The result is exceptional comfort and less fatigue on the long distance trips of your adventures.

More inspiration comes from the available Power Panoramic Sunroof, offering everyone aboard the most stunning theatre view of the sky and stars.



REQUEST A TEST DRIVE





New gloss black vents

Nissan Connect EVO

New Synthetic
Leather panel

New gear lever
with double-stitched
leather boot

New Synthetic
Knee Pad

Premium D shaped steering wheel

PREMIUM DETAILS THAT ARE A CLASS ABOVE THE REST

Sporty D-shaped with
heated steering wheel*

* only on Tekna

Available tan leather with
quilting and black seat inserts*

Heated 2nd Row
seats*

Power Panoramic
Sunroof

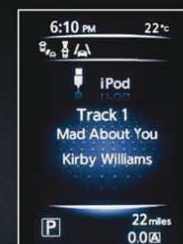
REQUEST A TEST DRIVE

NISSAN ADVANCED DRIVE-ASSIST DISPLAY

INNOVATION THAT'S RIGHT IN FRONT OF YOU.

Turn-by-turn directions, caller ID, available safety features... all your info is right before your eyes on your 5" colour Advanced Drive-Assist Display. Use the steering wheel controls to toggle between different screens. Just push on the arrows. Easy!

NISSAN INTELLIGENT MOBILITY



AUDIO



TYRE PRESSURE
MONITORING SYSTEM



MATCH THE DISPLAY TO
YOUR COLOUR



DRIVING AIDS



TURN-BY-TURN NAVIGATION



[Exterior Design](#) | [Interior Design](#) | [Technology & Performance](#) | [Style & Accessories](#) | [Technical Specifications](#) | [CO2 emissions](#) | [Further Information](#) | [Commitments](#)

[Print](#) | [Close](#)

[Page 1](#) | [Page 2](#) | [Page 3](#) | [Page 4](#) | [Page 5](#) | [Page 6](#) | [Page 7](#) | [Page 8](#) | [Page 9](#) | [Page 10](#) | [Page 11](#) | [Page 12](#) | [Page 13](#)

REQUEST A TEST DRIVE



BOSE

PREMIUM BOSE AUDIO SYSTEM.

Soar to the sound of your Premium Bose Audio System. An expansive listening experience in both the front and back, it fills the X-TRAIL with music of both depth and precision.

CUSTOM-TUNED SOUND

Eight high performance speakers channel sound throughout the vehicle: tweeters, front and rear woofers in the doors and a subwoofer at the back work in harmony to deliver wider, clearer sound with a deep, powerful bass - all perfectly balanced to suit you.

*Only available on 5 seat Tekna grade



NissanConnect™

YOUR WORLD
AT YOUR FINGERTIPS.

Thanks to the New NissanConnect* EVO with Navigation and Mobile Apps, X-TRAIL is your smartphone's best friend. No more separation anxiety for you! From now on, your own hand-picked music, latest tweets, Facebook, TripAdvisor and more can all come along for the ride, seamlessly integrated through your smartphone and X-TRAIL's 7-inch color touch-screen.

* from N-Connecta grade.



* from N-Connecta grade.

SLIDE, GLIDE AND SWING WIDE.

A SMARTER 2ND ROW. Thanks to the X-TRAIL's flexible seating system, this 2nd row is truly first class. The 60/40 split seat slides forward for easy access and adjusts to give you more boot space, more legroom, and everything or anything in between. You can also recline the seats, when it's time to just relax.

OPTIONAL 3RD ROW. The X-TRAIL's folding 3rd-row 50/50 split seat gives you additional versatility. Perfect for accommodating extra passengers and their gear, it also folds down completely to make a flat boot floor for maximum storage capacity.

REAR 77° WIDE OPENING DOORS. The X-TRAIL's rear doors swing out to nearly 80°, giving you easy access to the kids, the cool-box, the snowboards... making life so much easier.



SEAT FIVE OR ADAPT TO SEVEN COMFORTABLY

Sit back and enjoy the stunning view through the available Power Panoramic Sunroof. First class front headroom and thoughtful 2nd row vents help keep everyone comfortable. An available 3rd row of seats with a 50/50 folding split is ideal solution when you need to fit more family members and friends inside of your new X-TRAIL - or you can fold it down completely, making the cargo floor flat and Maximising the storage space.



NISSAN MOTION ACTIVATED TAILGATE
INNOVATION THAT GIVES YOU A HAND

Got your arms full ? No worries ! You can open the back door hands-free. Just stand less than 0.8m away with your Intelligent Key in your pocket and swing your foot under the centre of the bumper - the door will open in a couple of seconds.



NISSAN MOTION ACTIVATED TAILGATE

**LITTLE DETAILS THAT MAKE
A BIG DIFFERENCE**

At Nissan, we innovate to make your life easier. Details like the Nissan Hands-Free Power Tailgate and the wide opening of the rear doors take the hassle out of packing and unpacking so that you can make the most of your precious days out.

**SINGLE-HANDEDLY
REINVENTING VERSATILITY**

The exclusive Cargo System adapts to your next trip in an instant. An adjustable set of shelves and dividers offer a variety of 9 configurations - it's so easy, you can do it with one hand.



Secret spot. A long, flat floor for big items, with under-floor storage for things you want to keep out of sight, such as a laptop.



Lower your floor for added height to fit in those tall items.

SEE ALL SIDES OF THE SITUATION

BIRD'S EYE VIEW

Intelligent Around View Monitor gives you a virtual 360° bird's eye view of your vehicle to bring your parking space and manoeuvring capabilities into full perspective.

REAR VIEW OR FRONT VIEW

Thanks to Intelligent Around View Monitor, you can check the front and back of the car while remaining comfortably in the driver's seat.



STRESS-FREE PARALLEL PARKING

Intelligent All View Monitor provides visuals that allow you to park like a pro.



SQUEEZE IN ANY SPOT STRAIGHT

Intelligent All View Monitor provides multiple views to help you park straight into your space without a scrape.



GARAGE PARKING IS A CINCH

Intelligent All View Monitor provides visuals that help you pull all the way into a garage, showing any objects on the floor and ensuring you've cleared the garage door.



HOOK UP A TRAILER WITH EASE

Intelligent All View Monitor provides an overhead view and rear bumper view to help you align to a trailer hitch with ease.

NISSAN INTELLIGENT MOBILITY

RIGHT ON THE NOSE

With a front and overhead view, you know just how far to pull up - without going too far.

FEAR NO PARKING LOT

Tight spot with cars on either side? The overhead view helps you center your X-TRAIL in the space.

SPARE YOUR WHEELS

The side is a great help for seeing how close you are to the curb.

BACKGROUND SAVVY

In reverse, the display helps you see what's directly behind you, while the overhead view helps with smaller objects that might be hidden below your window.

*Available from N-Connecta grade

SEE MORE AROUND YOU

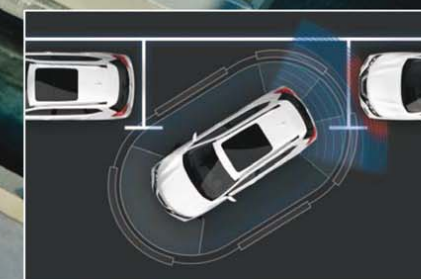
BECOME A MASTER OF MANOEUVRABILITY

When the going gets tough, Nissan Intelligent Park Assist makes it smoother. Just line up your car with the parking space and it will guide you in, X-TRAIL offers an Intelligent Around View Monitor with Moving Object Detection. Four cameras give you a virtual 360° bird's-eye view of your vehicle, with selectable split-screen close-ups of the front, in addition to rear and curbside views for a better look.



REVERSE PARK

No need to twist your neck: you can count on the rear view camera when you're reversing.



PARALLEL PARK

Find parallel parking tricky? Select your spot on the Intelligent Around View Monitor and let the system steer you in.



GET A HAND WHEN YOU WANT IT

STEPPING IN WHEN YOU NEED IT

Meet your co-driver. It sees, it senses, it jumps in. From smart safety features that step in on your behalf to driving aids, from Intelligent Park Assist to Intelligent Emergency Braking with Pedestrian Recognition, New Nissan X-TRAIL acts as your N°1 partner, always looking out for you, always there to support you, and never forgetting about those around you.



INTELLIGENT EMERGENCY BRAKING WITH PEDESTRIAN RECOGNITION. Constantly monitoring the presence of objects or pedestrians in your way, this system can prevent you from bumping anybody hidden from the driver's perspective.



LANE DEPARTURE WARNING. This system will alert you of drifting by giving audible and visible warnings.



HIGH BEAM ASSIST. See more on dark roads. This system will activate the beams as soon as you need them and temporarily dip the lights for oncoming traffic.



REAR CROSS TRAFFIC ALERT. This system will warn you if there is any oncoming traffic or large objects behind you when you're reversing.



TRAFFIC SIGN RECOGNITION. Stick to the latest speed limits thanks to automatic road sign detection as you go.

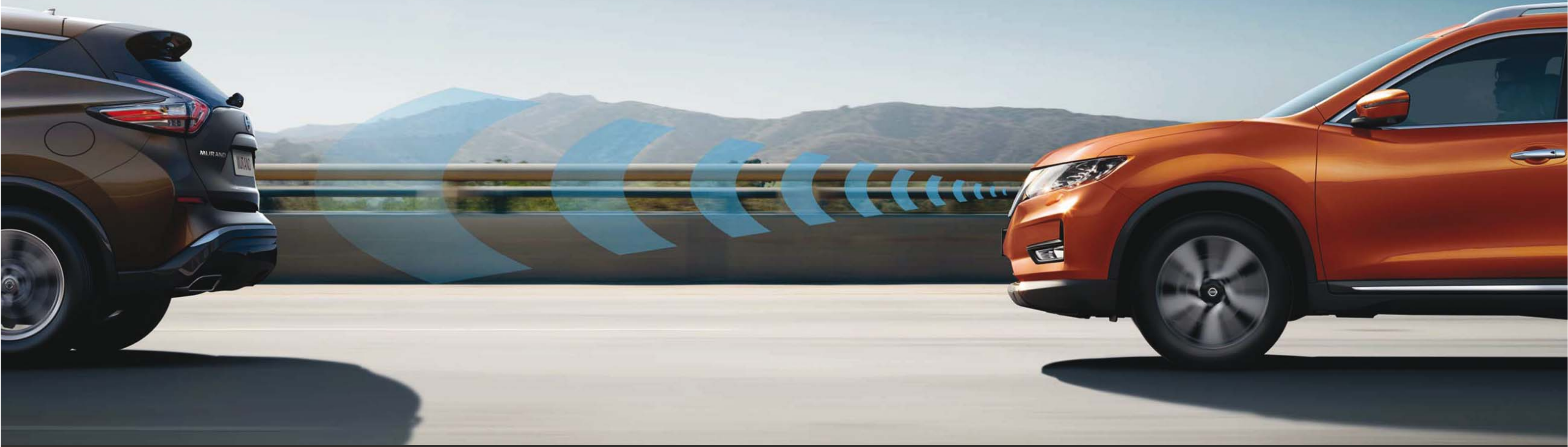


BLIND SPOT WARNING. This system can see what the eye cannot. It will warn you if it detects any vehicles in your rear diagonal blind spot.

GET A HAND WHEN YOU WANT IT

ALWAYS LOOKING OUT FOR YOU

Nissan's Intelligent Driving Systems use advanced radar technology to constantly monitor all the activity around you, keeping tabs on the traffic and helping you handle any unexpected situations. It's like having an extra pair of eyes keeping watch so that you can make the most of your family adventure.





NISSAN INTELLIGENT MOBILITY

DRIVE MORE LIKE A PRO

X-TRAIL, QUIETLY MAKING YOU A BETTER DRIVER.

The X-TRAIL is so agile and responsive, it actually improves your driving. Nissan's Chassis Control technologies make it smooth to handle and supple yet secure to drive – ensuring an exciting yet comfortable journey for everyone on board. So pile in and have fun.

INTELLIGENT RIDE CONTROL.
Take the rough with the smooth. This system applies subtle braking to prevent turbulence over bumps and enhances the overall comfort of the ride for the whole family.



INTELLIGENT TRACE CONTROL.
Keep cool when cornering. This system adjusts brake pressure on individual wheels to keep you on an optimal line through turns.



INTELLIGENT ENGINE BRAKE.
Feel the curve. This system controls the CVT as though you're driving manual through a light bend. It shifts down to smoothly decelerate on your way through the curve, then shifts back up to accelerate on your way out.



DRIVE MORE LIKE A PRO

ADAPT TO RAIN OR SLEET IN THE BLINK OF AN EYE

The X-TRAIL can adapt to changing conditions 30 times faster than the blink of an eye. Whether it's snow, rain-covered pavement or a tight turn, the system will automatically send power to the wheels that need it the most. Even in ideal conditions, the X-TRAIL's All Wheel Drive system pays big dividends: getting a grip has never felt better.

STAND STILL ASSIST/AUTO HOLD. No rolling backwards. With Stand Still Assist, the feature will hold your X-Trail at a stationary position for up to 3 minutes, at which point the electric parking brake will be applied if there is no driver interaction. The feature works on all gradients. Only available on manual transmissions.

INTELLIGENT 4x4. With X-TRAIL's All-Mode 4x4-i, is a system that's capable on-road and off. You can choose full-time 2WD for maximum efficiency. Auto Mode constantly monitors conditions and adjusts the balance of power between front and rear.



INTELLIGENT POWER

GO FURTHER WITH A CLEAN CONSCIENCE

Looking for excellent fuel economy in a roomy crossover that's lots of fun to drive? That's what you get with X-TRAIL. From exterior aerodynamics that whisper through the wind to advanced engines and a virtually gearless XTRONIC transmission, it takes efficiency and performance to the next level.

Powering the new X-TRAIL are advanced 1.6 litre petrol, 1.6 litre diesel and 2.0 litre diesel engines. The 1.6 litre engines offer enhanced fuel economy and lower CO₂ emissions. The 2.0 litre diesel offers higher performance. The engine also features Nissan's automatic Start/Stop system, which shuts down the engine when temporarily not in use – at traffic lights for example – to save fuel, then smoothly and quickly restarts as you pull away.

In the latest version of XTRONIC (Continuously Variable Transmission), friction is reduced up to 40% and the ratio coverage is increased to greater than that of some 8-speed automatics. An Eco mode improves fuel economy at the touch of a switch. Combined with such smooth performance, it's like riding a continuous wave of power.

177 PS 380 TORQUE 9.4 SEC 0-60 MPH

ENGINE	OUTPUT (PS)	TORQUE (NM)	CO ₂ (g/km)	FUEL CONSUMPTION (MPG)	0-62 MPH
1.6 DIG-T petrol 2WD MT	163	240	145 (149 with 18/19")	45.6 (44.1 with 18/19")	9.7 s
1.6 dCi diesel 2WD MT	130	320	129 (133 with 18/19")	57.6 (55.4 with 18/19")	10.5 s
1.6 dCi diesel 2WD CVT XTRONIC	130	320	135 (139 with 18/19")	55.4 (53.3 with 18/19")	11.4 s
1.6 dCi diesel 4WD MT	130	320	139 (143 with 18/19")	53.3 (52.3 with 18/19")	11.0 s
2.0 dCi diesel 2WD CVT XTRONIC	177	380	148 (152 with 18/19")	50.4 (47.8 with 18/19")	9.6 s
2.0 dCi diesel 4WD MT	177	380	149 (153 with 18/19")	50.4 (48.7 with 18/19")	9.4 s
2.0 dCi diesel 4WD CVT XTRONIC	177	380	158 (162 with 18/19")	47.1 (46.3 with 18/19")	10.0 s

NISSAN GENUINE ACCESSORIES

CUSTOMISE YOUR ADVENTURES TO SUIT YOUR FAMILY

Make your next adventure with the family even more memorable by kitting out your X-TRAIL to suit you. From double USB sockets to family-sized ski/snowboard carriers and more – you can count on Nissan Genuine Accessories to keep the whole crew comfortable and ready for action.



- 1. Rear styling plate (compatible with removable towbar)
- 2. Removable towbar
- 3. Ski/snowboard carrier up to 6 pairs slideable

- 4. Quick charging Double USB socket for second row
- 5. Side steps aluminum
- 6. Smartphone holder Push air
- 7. Door entry guard illuminated



[Exterior Design](#) | [Interior Design](#) | [Technology & Performance](#) | [Style & Accessories](#) | [Technical Specifications](#) | [CO2 emissions](#) | [Further Information](#) | [Commitments](#)

[Print](#) | [Close](#)

[Page 1](#) | [Page 2](#)

REQUEST A TEST DRIVE

COLOURS



Titanium Olive



Monarch Orange



Chilli Pepper



Sapphire Blue



Storm White



Universal Silver



Gun Metallic



Ebisu Black



Palatial Ruby



Picador Brown

ALLOY WHEELS



17" alloy (silver painted)



18" alloy (machine cut)



19" alloy (machine cut)

TRIMS

VISIA/ACENTA/N-CONNECTA



BLACK CLOTH INTERIOR

TEKNA



LEATHER WITH PERFORATION - CREAM



LEATHER WITH PERFORATION - BLACK

TEKNA/OPTION



TAN LEATHER WITH BLACK LEATHER INSERTS

DIMENSIONS

- A: Wheelbase: 2,705 MM
- B: Overall length: 4,690 MM
- C: Overall width: 1,820 MM
(1,830 MM with 19" tire)
- D: Overall height: 1,710 MM
(1,740 MM with roofrails)



AT NISSAN,
**WE FOCUS
ON QUALITY.**



MASTERED THROUGH EXPERIENCE

At Nissan, we do everything with the customer in mind. Every action and decision we make, is made with the utmost care, precision and quality because ultimately, it's for you. From conception to car construction, from testing to transparency, from customer service to commitment. Quality is in every fine detail.



360° PROCESS

We build in quality from the outset, meticulously conceiving each car to make them more comfortable and more durable through innovative design, intelligent technology and thoughtful details inspired by you.



SAFETY

We work with our intelligent driving systems to constantly look out for you and help you avoid any mishaps for a bolder, more confident driving experience day after day. Our Around View Monitor uses 4 cameras to give you a virtual birds eye view of your car in its surroundings.



EXTREME RELIABILITY

We push our cars to the limit to guarantee their daily performance and reliability. We travel millions of kilometres in pre-production tests, open and close doors and bonnets thousands of times a day and use real volcanic dust from Japan to test window resistance.



ULTIMATE PROOF | reevoo

Our commitment to quality is best demonstrated by you. Search for testimonials, reviews and ratings online or find out what people are saying about Nissan on Reevoo. It's the best place to compare vehicles and get real answers from real owners you can trust.

<https://www.nissan.co.uk/vehicles/new-vehicles/xtrail/customer-reviews.html>

[Exterior Design](#) | [Interior Design](#) | [Technology & Performance](#) | [Style & Accessories](#) | [Technical Specifications](#) | [CO2 emissions](#) | [Further Information](#) | [Commitments](#)

[Print](#) | [Close](#)

REQUEST A TEST DRIVE



OUR PROMISE. YOUR EXPERIENCE

THERE'S NO TIME LIMIT ON HOW LONG YOU WILL BENEFIT FROM OUR PROMISES. IF YOU HAVE JOINED THE YOU+NISSAN PROGRAM, AND WANT TO BE SPOKEN TO IN A GENUINE, OPEN AND HONEST MANNER, WE WILL LOOK AFTER YOU. FOREVER. **THAT IS OUR PROMISE.**

FREE COURTESY CAR

We promise to keep you on the road whilst your car is being serviced. Book in advance and we'll ensure that a free courtesy car is available for you. We even have electric cars available at select service points, and a range of other transport solutions to suit your needs.



FREE VEHICLE HEALTH CHECK

We promise to give your car a free health check prior to any work being carried out, so you know exactly what needs to be done, and how much it will cost. All our prices are also fully accessible online and at our dealers.



SERVICE PRICE MATCH

We promise to deliver the highest care for your Nissan thanks to the expertise of Nissan trained teams and the use of Nissan genuine parts. We simply know best how to service your Nissan. And to guarantee best value-for-money, Nissan will price match like-for-like quotes within 10km of your local dealer.



LIFETIME NISSAN ASSISTANCE

We promise to keep you on the road 24/7. Should anything unexpected happen, we guarantee 24-hour Nissan assistance, whatever the age of your Nissan.



ANYWHERE, ANYTIME, ANYTHING. JUST CALL 0800 000 000 AND WE'LL BE RIGHT THERE.

SERVICE CONTRACTS

Nissan Service Contract is the best way to give your Nissan X-TRAIL the maintenance it deserves! We take good care of your Nissan whilst keeping your aftercare at fix price over years. While bringing your car at our dealership, we will change your parts and fluids in accordance with Nissan official service schedule and perform check ups for peace of mind journeys. Total budget and plan control, Nissan will inform you of due visits and propose the most suitable service and timing for your services.

EXTENDED WARRANTY

Nissan Extended Warranty gives you the opportunity to extend the 3 Years/60,000 miles warranty for a longer period or mileage. Select the contract that best suits your driving usage. In case of a repair, only Nissan genuine parts will be used and fitted by Nissan trained technicians. For your peace of mind, 24/7 European roadside assistance is included (if applicable).

AT NISSAN, YOU BRING OUT THE BEST IN US.

You spark our imagination. You provoke our ingenuity. You inspire us to change the rules and innovate. And at Nissan, innovation is not just about additions and extensions; it's about crossing the line to reinvent the status quo. It's about developing unexpected solutions to satisfy your wildest and most pragmatic desires. At Nissan, we design cars, accessories and services that break the mould - making the practical exciting and the exciting practical to offer you a more exhilarating driving experience everyday.



NISSAN X-TRAIL OFFERS YOU:

3-YEAR WARRANTY OR 60,000 MILES

YEARLY OR 18,000 MILES INTERVAL FOR DIESEL ENGINES

YEARLY OR 12,500 MILES INTERVAL FOR PETROL ENGINES



Innovation
that excites

NEW NISSAN X-TRAIL



[Exterior Design](#) | [Interior Design](#) | [Technology & Performance](#) | [Style & Accessories](#) | [Technical Specifications](#) | [CO2 emissions](#) | [Further Information](#) | [Commitments](#)

[Print](#) | [Close](#)

[REQUEST A TEST DRIVE](#)

STANDARD EQUIPMENT

The New X-Trail combines Nissan's acclaimed 4x4 heritage with fresh ideas and technologies inspired by the brand's ground-breaking cross over models.

Together they form a Crossover that is built to build families.

ALL NISSAN X-TRAILS COME WITH:

SECURITY

- Remote central door locking with superlocking
- Engine immobiliser
- Thatcham alarm system

SAFETY

- ABS with EBD and Brake Assist
- Electronic Stability Programme (ESP)
- 6 airbags
- 3 rear headrests
- ISOFIX childseat anchorage points (2nd row only)
- Rear door childlocks
- Stand Still Assist with Auto Hold Function (Manual transmission only)
- e-PKB (Electric Parking Brake)
- Chassis Control (Intelligent Engine Brake, Intelligent Trace Control and Intelligent Ride Control)
- Tyre Pressure Monitoring System
- Spare wheel

INTERIOR STYLING

- 5" High Definition full colour TFT screen combimeter

AUDIO

- AUX socket and USB port
- Remote audio control
- DAB/AM/FM/CD audio system with 4 speakers
- Bluetooth® with microphone

EXTERIOR STYLING

- Chrome window surround
- Chrome door handles
- Black honeycomb front grille
- V-Motion front grille
- 17" Alloy Wheels

CONVENIENCE

- Front and rear electric windows
- Tilt and telescopic adjustable steering wheel
- Front and rear armrests
- Cruise control and speed limiter
- Electric heated mirrors with side turn signal light
- 60:40 Rear split folding, reclining and sliding bench
- Luggage Board System (9 combinations)
- Cloth trim

VENTILATION AND VISIBILITY

- Manual air conditioning with pollen filter
- LED Daytime Running Lights

OPTIONAL EXTRAS

- Premium Metallic Paint
- Pearlescent Paint
- Metallic Paint
- 7 seats
- CVT or 4WD transmission
- Smart Vision Pack (Intelligent Forward Emergency Braking with Pedestrian Recognition, Lane Departure Warning, Traffic Signal Recognition and Front and Rear Parking Sensors)



N-CONNECTA

IN ADDITION TO STANDARD SPECIFICATION

AUDIO

- 6 speakers

EXTERIOR STYLING

- Front fog lights
- Rear privacy glass

INTERIOR STYLING

- Leather steering wheel and gear knob
- Panoramic roof with one-touch shade
- Metallic grain interior inserts

CONVENIENCE

- Dual zone automatic air conditioning
- Automatic electric folding mirrors
- Driver Lumbar Support

VENTILATION AND VISIBILITY

- Automatic headlights
- Rain sensing windscreen wipers
- Anti-Dazzle rear view mirror

SAFETY

- Smart Vision Pack including:
 - Traffic Signal Recognition
 - Lane Departure Warning
 - Intelligent Forward Emergency Braking with Pedestrian Recognition
 - Front and Rear Parking Sensors

AUDIO AND NAVIGATION

- NissanConnect Evo 7" Touchscreen Navigation and Entertainment System
- Intelligent Around View Monitor
- Sharkfin antenna

EXTERIOR STYLING

- 18" Machine cut alloy wheels
- Satin roof rails

CONVENIENCE

- Nissan Intelligent Key
- Hands-Free automatic opening power tailgate
- Push start button
- Passenger Seat Lifter

OPTIONS*

- 7 Seats



*Options available at additional cost
Images may not be representative of specific grade

TEKNA

IN ADDITION TO N-CONNECTA

SAFETY

- Safety Shield Technologies including:
 - Blind Spot Warning
 - Moving Object Detection
 - Rear Cross Traffic Alert

EXTERIOR STYLING

- 19" Machine Cut Alloy Wheels
- Chrome Side Mouldings

INTERIOR STYLING

- Leather seats*

CONVENIENCE

- Electrically adjustable driver's seat (slide, recline, lifter, lumbar)
- Electrically adjustable passenger's seat (slide, recline)
- Front heated seats
- Heated Rear Seats (Second Row)
- Heated Steering Wheel
- Intelligent Park Assist

VENTILATION AND VISIBILITY

- LED headlights with Adaptive Front Lighting System
- Automatic headlights
- High Beam Assist

AUDIO AND NAVIGATION (Only on 5 seat models)

- Premium Bose® Audio System
- 8 Bose® Speakers: 2 Tweeters, 4 highand medium frequency door speakers
- 7.7-litre dual driver subwoofer
- Digital Amplifier

OPTIONS**

- 7 Seats



*May contain artificial leather

* Some parts of leather seats may contain artificial leather
**Options available at additional cost



COLOURS



TITANIUM OLIVE (M)



MONARCH ORANGE (P)



CHILLI PEPPER (S)



SAPPHIRE BLUE (PM)



STORM WHITE (P)



UNIVERSAL SILVER (M)



GUN METALLIC (M)



EBISU BLACK (M)



PICADOR BROWN (P)



PALATIAL RUBY (P)

S - Solid Paint M - Metallic Paint P - Pearlescent Paint PM - Premium Metallic

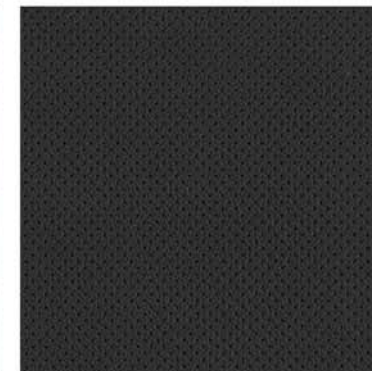
TRIMS

N-CONNECTA



GRAPHITE CLOTH

TEKNA



LEATHER WITH PERFORATION - GRAPHITE

ALLOYS



18" Alloy wheels

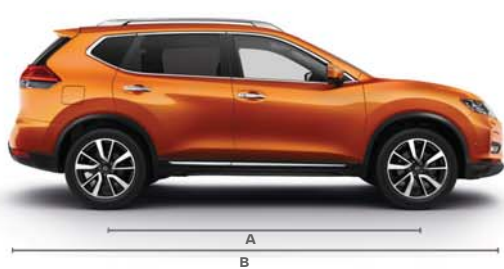


19" Alloy wheels

X-TRAIL TECHNICAL DATA

		dCi 130			DIG-T 163	dCi 177*		
MODEL		2WD Manual	4WD Manual	2WD Xtronic	2WD Manual	4WD Manual	2WD XTRONIC CVT	4WD XTRONIC CVT
Available grades		N-Connecta, Tekna	N-Connecta, Tekna	N-Connecta, Tekna	N-Connecta, Tekna	N-Connecta, Tekna	N-Connecta, Tekna	N-Connecta, Tekna
Seating capacity	persons	5 (7 optional)						
ENGINE								
Max. engine power ⁽¹⁾	kW(PS)/min-1	96 (130)/4000			120(163)/5600	130(177)/3750		
Max. torque ⁽¹⁾	Nm/min-1	320/1750			240/2000-4000	380/2000		
Fuel type		Diesel			Petrol	Diesel		
Fuel tank capacity	Litres	60						
DRIVE TRAIN								
Transmission type		6-speed manual	6-speed manual	Xtronic	6-speed manual	6-speed manual	Xtronic	Xtronic
Driven wheels		2WD	All Mode 4x4-i	2WD	2WD	All Mode 4x4-i	2WD	All Mode 4x4-i
Nissan Stop/Start technology		Yes						
CHASSIS								
Wheel size		17x7J, 18x7J, 19x7J						
Tyre size		225/65R17, 225/60R18, 225/55R19						

DIMENSIONS



A: Wheelbase: 2,705 MM
B: Overall length: 4,690 MM
C: Overall width: 1,820 MM (1,830 MM with 19" tyre)
D: Overall height: 1,710 MM (1,740 MM with roof rails)



1) In accordance with 1999/99/EC. Figures are intended for comparisons between vehicles and may not reflect real driving results. Optional equipment, maintenance, driving behaviour, road and weather conditions may affect the official results.
2) Figures in accordance with EC Directive. Kerb weight condition is without driver and including coolant, oils, fuel, spare wheel and tools. Pay load will be reduced depending on the options and/or accessories installed.
3) MPG figures are obtained from laboratory testing, in accordance with 2004/3/EC and intended for comparisons between vehicles and may not reflect real driving results. (Optional equipment, maintenance, driving behaviour, road and weather conditions may affect the official results).
*Subject to final homologation

			dCi 130			DIG-T 163	dCi 177		
MODEL			2WD Manual	4WD Manual	2WD Xtronic	2WD Manual	4WD Manual	2WD XTRONIC CVT	4WD XTRONIC CVT
Available grades			N-Connecta, Tekna	N-Connecta, Tekna	N-Connecta, Tekna	N-Connecta, Tekna	N-Connecta, Tekna	N-Connecta, Tekna	N-Connecta, Tekna
Seating capacity	persons		5 (7 optional)						
WEIGHTS & DIMENSIONS									
Gross Vehicle Weight		kg	2090-2260	2160-2320	2140-2310	2050-2210	2190 -2350	2170-2330	2240-2400
Kerb weight		kg	1505-1620	1580-1685	1565-1670	1460-1570	1625-1720	1620-1700	1675-1770
Max. trailer weight	braked	kg	2000		1500	1800	2000	1650	
	unbraked	kg	750						
Overall length		mm	4640						
Max axle weight	Front	kg	1080	1110	1135	1035	1180	1190	1230
	Rear	kg	1075	1115	1075	1090	1260	1230	1260
Overall width		mm	1820 (1830 with 19" tyre)						
Overall height		mm	1710 (1740 with roof rails)						
Wheelbase		mm	2705						
Min. turning circle (kerb to kerb)		m	11.2						
Luggage space	max. length	mm	935						
	max. width	mm	1142						
Luggage capacity	VDA (5 seat version)	l	565						
	VDA (7 seat version)	l	445 (135)						
	max. with folded seats (VDA)	l	1996						
PERFORMANCE	Alloy Wheels		18" & 19"	18" & 19"	18" & 19"	18" & 19"	18" & 19"	18" & 19"	18" & 19"
			6-speed manual	6-speed manual	Xtronic	6-speed manual	6-speed manual	Xtronic	Xtronic
Fuel consumption (3)	Urban cycle	mpg (1/100km)	48.7 (5.8)	44.8 (6.3)	471 (6.0)	34.9 (8.1)	42.2 (6.7)	44.1 (6.4)	42.2 (6.7)
	Extra-urban	mpg (1/100km)	61.4 (4.6)	576 (4.9)	576 (4.9)	51.4 (5.5)	53.3 (5.3)	52.3 (5.4)	48.7 (5.8)
	Combined	mpg (1/100km)	55.4 (5.1)	52.3 (5.4)	53.3 (5.3)	44.1 (6.4)	48.7 (5.8)	48.7 (5.8)	46.3 (6.1)
CO ₂ mass emission (combined)*		g/km	133	143	139	149	153	152	162
Emission Level			EURO6			EURO6b			
Max. Speed		MPH	116	115	111	124	126	123	121
Acceleration	0 - 62 mph (0 - 100 kph)	sec	10.5	11.0	11.4	9.7	9.4	9.6	10.0

PRICE LIST

							COMPANY CAR DRIVERS ^A				
GRADE	ENGINE	TRANSMISSION	BASIC PRICE £	VAT £	TOTAL RETAIL £	ON THE ROAD PRICE £	P11D VALUE £	BIK%	MONTHLY £ BIK AT 20%	MONTHLY £ BIK AT 40%	MONTHLY £ BIK AT 45%
N-CONNECTA	dCi 130 2WD	6 manual	24,629	4,926	29,555	30,125	29,555	31%	152.70	305.40	343.58
	dCi 130 2WD	Xtronic	25,838	5,168	31,005	31,575	31,005	33%	170.53	341.06	383.69
	dCi 130 4WD	6 manual	26,213	5,243	31,455	32,025	31,455	33%	173.00	346.01	389.26
	DIG-T 163 2WD	6 manual	23,413	4,683	28,095	28,355	28,095	31%	145.16	290.32	326.60
	dCi 177 4WD	6 manual	27,004	5,401	32,405	33,290	32,405	35%	189.03	378.06	425.32
	dCi 177 2WD	Xtronic	26,629	5,326	31,955	32,840	31,955	35%	186.40	372.81	419.41
	dCi 177 4WD	Xtronic	28,213	5,643	33,855	34,740	33,855	37%	208.77	417.55	469.74
TEKNA	dCi 130 2WD	6 manual	27,129	5,426	32,555	33,125	32,555	31%	168.20	336.40	378.45
	dCi 130 2WD	Xtronic	28,338	5,668	34,005	34,575	34,005	33%	187.03	374.06	420.81
	dCi 130 4WD	6 Manual	28,713	5,743	34,455	35,025	34,455	33%	189.50	379.01	426.38
	DIG-T 163 2WD	6 manual	25,913	5,183	31,095	31,355	31,095	31%	160.66	321.32	361.48
	dCi 177 4WD	6 manual	29,504	5,901	35,405	36,290	35,405	35%	206.53	413.06	464.69
	dCi 177 2WD	Xtronic	29,129	5,826	34,955	35,840	34,955	35%	203.90	407.81	458.78
	dCi 177 4WD	Xtronic	30,713	6,143	36,855	37,740	36,855	37%	227.27	454.55	511.36

^ARepresentative examples only - subject to change.

OPTIONS

	VISIA	ACENTA	N-CONNECTA	TEKNA	BASIC £	VAT £	TOTAL £
Metallic Paint	○	○	○	○	47917	95.83	575
Pearlescent Paint	○	○	○	○	620.83	124.17	745
Premium Metallic Paint	○	○	○	○	620.83	124.17	745
7-Seat Upgrade (2 additional rear seats)	○	○	○		833.33	166.67	1000
Tekna 7-Seat Upgrade (2 additional rear seats)				○	550	110	660
19" Wind alloy wheels (x4) in silver, black or diamond cut*	□	□	□	□	1109	222	1331
19" Ibisus alloy wheels (x4) in silver, black or diamond cut*	□	□	□	□	1109	222	1331
Towbar - removable with 7 PIN electrics	□	□	□	□	535.22	107.04	642.26
Towbar - removable with 13 PIN electrics & additional power	□	□	□	□	645.83	129.17	775.00
Side styling bars (illuminated)	□	□	□	□	625	125	750
Loadcarrier (aluminium)	□	□	□	□	224.16	44.83	269
Cross bars for roof railing	□	□	□	□	224.16	44.83	269
Luxury textile mats (black or brown)	□	□	□	□	62.50	12.50	75.00

Optional - ○ Standard - ● Optional Dealer Fit - □

OPTION PACKS

	VISIA	ACENTA	N-CONNECTA	TEKNA	BASIC £	VAT £	TOTAL £
Design Pack: Mirror Caps and Side Door Sills (Chrome or Glossy Black)	□	□	□	□	249.17	49.83	299
Protection Pack**: Bumper upper protector, luxury velour mats and soft trunkliner	□	□	□	□	190.83	38.17	229

^{*}Price quoted is for 4 alloy wheels and does not include tyres

^{**}Available in 5 or 7 seat variants, in black or cream

Dealer fit option prices include fitting but are only a guide. Please check with your local Nissan dealer for exact prices.

Optional - ○ Standard - ● Optional Dealer Fit - □



DPF FILTER

WHAT IS A DPF?

A **DIESEL PARTICULATE FILTER (DPF)** forms part of the vehicle's exhaust in order to limit the amount of soot particles contained within the exhaust gas passing into the atmosphere.

When the amount of soot in the filter reaches a specific level, this needs to be reduced in order to maintain the filter's function.

This reduction is called '**REGENERATION**' and is carried out by the vehicle's electronic control system which raises the exhaust gas temperatures during normal driving. If a vehicle requires frequent regeneration due to driving style, these high temperatures cause the engine oil to degrade more quickly.

However, from 2011 onwards Nissan vehicles were fitted with an **OIL CHANGE SUPERVISOR (OCS)** as well as a DPF to help monitor the condition of the oil and ensure the quality never falls below a minimum level.

WHAT IF I ONLY DRIVE SHORT JOURNEYS?

If the vehicle is only driven for short journeys, or at low speed, then it may not be possible for regeneration to occur. In this situation, the below warning lights will be illuminated on your dashboard.



Please refer to your Owner's Manual for further information.

After seeing these warning lights you need to drive, as soon as possible, above 40mph until the light goes out. This can take up to 30 minutes depending on the amount of soot collected in the filter.

WHAT IF I IGNORE THEM?

If you continue to drive at low speeds the exhaust gas temperatures cannot rise, so regeneration cannot occur. In this instance, a combination of the below warning lights will be illuminated on you dashboard.



In this case, and in order to protect the engine and DPF Filter, the vehicle will require '**SERVICE REGENERATION**' which can only be carried out by a workshop equipped with Nissan diagnostic equipment. You will need to go to your nearest Nissan dealer in case the oil and filter needs to be replaced.

As '**SERVICE REGENERATION**' is not a manufacturing fault, so the cost will **NOT** be covered under warranty.

CO2 MASS EMISSIONS AND VEHICLE EXCISE DUTY

VEHICLE	ENGINE	TRANSMISSION	BODY STYLE	EMISSION LEVEL	CO ₂ MASS EMISSIONS G/KM		12 MONTHS VED* £	
					17" AND LOWER ALLOYS	18" & 19" ALLOYS	17" AND LOWER ALLOYS	18" & 19" ALLOYS
New X-TRAIL**	dCi 130	6 manual 2WD	5 door	EURO6	129	133	205	515
	dCi 130	Xtronic transmission	5 door	EURO6	135	139	515	
	dCi 130	6 manual 4WD	5 door	EURO6	139	143	515	
	DIG-T 163	6 manual	5 door	EURO6	145	149	205	
	dCi 177	Xtronic transmission	5 door	EURO6	148	152	515	830
	dCi 177	Xtronic transmission 4WD	5 door	EURO6	158	162	830	
	dCi 177	6 manual 4WD	5 door	EURO6	149	153	515	830

* Determined by CO₂ emissions figure and fuel type - see "Further information". NB. Navara VED is fixed at £240 as it is considered a commercial vehicle.
** Juke, Pulsar, Qashqai and All figures are subject to final homologation.
*** On New Qashqai CO2 emissions are the same across the range irrespective of wheel size chosen

NISSAN CARE WARRANTY

- Provides protection for up to 3 additional years **on top of standard manufacturer's warranty**.
- Available for vehicles under 3 years old/60,000 miles from point of purchase.

+1YY UP TO 60,000 MILES		
MODEL	RETAIL PRICE EXCL VAT	FINAL RETAIL PRICE INCL VAT
MICRA	£206.00	£24700
NOTE	£214.00	£25700
JUKE	£223.00	£26700
PULSAR	£239.00	£28700
QASHQAI / JUKE NISMO	£248.00	£29700
X-TRAIL	£381.00	£45700
NAVARA	£456.00	£54700
PATHFINDER	£464.00	£55700
MURANO / 370Z	£531.00	£63700
370Z NISMO	£648.00	£77700
GTR R35	£3,531.00	£4,23700
NV200 / M20	£389.00	£46700
PRIMASTAR / X83	£473.00	£56700
NV400 / X62	£589.00	£70700
NT400 / F24	£764.00	£91700

Prices above are for an additional 1 Year Nissan Care Warranty on top of the standard new car warranty. The warranty expires either 4 years or 60,000 miles from the date of vehicle registration, whichever comes first. Further age/mileage options are available.

NISSAN INSURANCE

Nissan Insurance has been designed to help Nissan drivers get the most from their cover, boasting the following benefits:

- Use of Nissan Approved Repairers and franchised trained technicians
- Use of only Nissan genuine parts for repairs
- Guaranteed repair for 3 years
- New car replacement, if your vehicle is written off when under 12 months old
- Cover provided for driving in the EU, subject to a maximum 30 days per year
- Personal accident benefit up to £5,000
- Up to £100 personal belongings cover
- £300 towards replacement locks if your keys are lost or stolen

Call Nissan Insurance today on 0344 335 3780

Calls charged at the same rate as local 01 and 02 numbers and will be included in inclusive call packages from mobiles. Lines are open Monday to Friday 9am-7pm and Saturday 9am-5pm.

Terms and Conditions

Quotations are subject to underwriting terms and acceptance criteria.

Nissan Insurance is arranged by Europa Group Ltd trading as Nissan Insurance Services on behalf of Maiden Global Holdings Ltd (registered in England with company number 07324422) Registered office: Albion House, Valley Business Centre, Gordon Road, High Wycombe, HP13 6EQ. Authorised and regulated by the Financial Conduct Authority. Financial Services Register number 555397. Europa Group Limited is authorised and regulated by the Financial Conduct Authority. Financial Services Register No. 309794. Registered as a limited company in England and Wales No. 3279177. Registered office: Europa House, Midland Way, Thornbury, Bristol BS35 2JX.

FURTHER INFORMATION

On The Road Prices. On The Road Price includes 12 months Government Vehicle Excise Duty (VED) determined by CO₂ emissions figure and fuel type, £55 Government First Registration Fee, number plates and delivery to the Nissan Dealership.
VED rates are determined by the vehicles CO₂ emissions figures and by the type of fuel used.
The following table applies to all new car registrations:

VED Band														
	CO ₂ Emissions Figure (g/km)*	0	1-50	51-75	76-90	91-100	101-110	111-130	131-150	151-170	171-190	191-225	226-255	over 255
Tax Year 2017 to 2018	First Year Rate	£0.00	£10.00	£25.00	£100.00	£120.00	£140.00	£160.00	£200.00	£500.00	£800.00	£1,200.00	£1,700.00	£2,000.00
	First Year Rate	£0.00	£10.00	£25.00	£105.00	£125.00	£145.00	£165.00	£205.00	£515.00	£830.00	£1,240.00	£1,760.00	£2,070.00
Tax Year 2018 to 2019	First Year Rate for Diesel Passenger Cars	£0.00	£25.00	£105.00	£125.00	£145.00	£165.00	£205.00	£515.00	£830.00	£1,240.00	£1,760.00	£2,070.00	£2,070.00

* g/km = grammes of CO₂ per kilometre travelled.

All Light Commercial Vehicles will have a standard VED rate of £240 per annum.

VAT and VED
VAT application is based on current HMRC guidelines, please check with HMRC for specific guidance for the vehicle you are purchasing.
VED is determined by the DVLA, please check with the DVLA for specific guidance for the vehicle you are purchasing.

Optional equipment. This price list features a selection from the full range of optional equipment, be they standard, dealer fit or factory options.

For further information and details of the full range, please contact your local Authorised Nissan Dealer.

Nissan's commitment to you includes all of the following benefits – some of which may be the reasons why you chose your new Nissan in the first place:

Manufacturer's warranty – Nissan's comprehensive warranty provides cover for your new Nissan from defects in materials or workmanship. Your vehicle is covered in all European Countries where Authorised Nissan Dealers are located. If your vehicle becomes inoperative due to a warrantable defect a towing service, when necessary, to the Authorised Nissan Dealer is covered. If a warrantable defect abroad takes more than six hours to repair, the Touring Assistance Programme will pay for a hotel room or rental car up to a certain maximum. The paint warranty covers painted body parts (excluding the underbody) for three years regardless of mileage driven. For further details please contact your local Authorised Nissan Dealer. Petrol and diesel engine cars - Three-year/60,000 miles. Petrol and diesel engine LCVs and Navara - Five-year/100,000 miles.

LEAF and e-NV200 – Nissan LEAF and e-NV200 offer a 5-year / 60,000 mile warranty on all EV dedicated components, including the lithium-ion battery, and a 3-year / 60,000 mile warranty on standard components. This is with the expression of e-NV200 which offers a 5-year / 60,000 mile warranty on mechanical components and corrosion*. The Nissan LEAF and e-NV200 lithium-ion battery state of health guarantee protects against battery capacity loss (less than 9 bars out of 12) as shown on LEAF and e-NV200's capacity gauge for a period of 5 years / 60,000 miles. For LEAF and e-NV200 flex customers, the battery state of health guarantee applies for the duration of the battery lease.

*The Basic Vehicle Warranty for e-NV200, according to 3.1 of the Warranty Booklet and Maintenance Record, is extended to 5 years (from the warranty start date) / 60,000 miles (whichever comes first). Only vehicles registered on or after 1st November 2016 are eligible for the Extended Warranty. Body parts and paint excluded during year four and year five. Terms and exclusions apply, for further information please see Extended Warranty Terms and Conditions. Apart from the afore-mentioned, all warranty conditions included in the Warranty Booklet and Maintenance Record remain unchanged. Issuer of this Extended Warranty is Nissan International Insurance Ltd

FURTHER INFORMATION

Nissan European Roadside Assistance is provided for the period of your new vehicle manufacturer warranty.

Roadside, Recovery and At Home products are provided by RAC Motoring Services (Registered No. 1424399, Registered Office: 8 Surrey Street, Norwich, NR1 3NG). RAC Motoring Services (in respect of insurance mediation activities only) is authorised and regulated by the Financial Conduct Authority and within the jurisdiction of the Financial Ombudsman Service and Financial Services Compensation Scheme.

Onward Travel and European Cover are underwritten by RAC Insurance Limited (Registered No. 1424399, Registered Office: 8 Surrey Street, Norwich, NR1 3NG). RAC Insurance Limited is authorised and regulated by the Financial Conduct Authority and within the jurisdiction of the Financial Ombudsman Service and Financial Services Compensation Scheme.

Nissan EV Pan-European Roadside Assistance is provided by AXA for 3 years or 60,000 miles, whichever comes first.

For LEAF and e-NV200 Flex (battery lease) customers, the Nissan EV Pan-European Roadside Assistance will cover you for the duration of your battery lease agreement should your Nissan EV run out of battery charge. For any other repair work, the basic warranty clause still applies. Benefits and Services are provided by AXA Assistance. AXA Assistance is authorised and regulated by the Financial Conduct Authority (FCA).

FCA Register number 439069. AXA Assistance UK Limited (registration 2638890) 106 - 118 Station Road, Redhill Surrey RH1 1PR

Peace of mind – we always guarantee our workmanship, and all genuine Nissan replacement parts and accessories have a minimum of one year's warranty. Accessory prices are subject to change, please see your nearest dealership for the most up to date prices. Our technicians have been trained by Nissan to work on your vehicle and they are the Nissan specialists. They use the latest equipment to ensure your vehicle is given the best treatment. Accessory prices are subject to change, please see your nearest dealership for the most up to date prices. Our technicians have been trained by Nissan to work on your vehicle and they are the Nissan specialists. They use the latest equipment to ensure your vehicle is given the best treatment. Accessory prices are subject to change, please see your nearest dealership for the most up to date prices.

Recyclability – we take all our environmental responsibilities very seriously - innovation today comes with a deep respect for the environment. Our engines are now much more unobtrusive and their emissions have been considerably reduced. All our vehicles are designed with recycling in mind.

Nissan Finance offers a wide range of flexible finance schemes to meet the needs of both our retail and business customers. Preferences, Hire Purchase, Nissan Contract Hire and Finance Lease, all offer the in-built flexibility to make the package tailor-made to meet your individual needs. We also provide added security to your finance agreement with a comprehensive range of payment protection plans. Ask your local Authorised Nissan Dealer for details.

The Nissan Motability Programme developed in association with the registered charity Motability enables those with difficulty getting around to obtain selected models on preferential terms.

All prices in this list are quoted in pounds sterling. Value Added Tax (VAT) has been calculated at 20%.

While all reasonable effort has been made to ensure the accuracy of the information provided, due to Nissan's policy of continuous product improvement, all particulars Contained are subject to constant revision and Nissan reserves the right to change, alter or modify, among other things, specifications, colours and prices of models without notice at any time. Accordingly you should consult your local Authorised Nissan Dealer for the exact introduction dates of all models and for the most up-to-date information.

Images shown are for guidance purposes. In some instances photos are of non UK specification vehicles and do not represent a specific model, grade or offer.

OUR PROMISE. YOUR EXPERIENCE.



REQUEST A TEST DRIVE



There's no time limit on how long you will benefit from our promises. If you are a Nissan Customer, we will look after you. **That is our Promise.**



FREE COURTESY CAR

YOU want to stay on the road when your Nissan is in for a service or repair.

NISSAN PROMISE to keep you mobile free of charge whether you need a courtesy car, or just a lift



FREE VIDEO HEALTH CHECK

YOU want to understand what is going on with your car's service.

NISSAN PROMISE a free vehicle health check and we can even show you any work that might need doing with your own vehicle assessment ideo.



SERVICE PRICE MATCH

YOU want the best value for money when it comes to service and repair.

NISSAN PROMISE simple Fixed Price Servicing, and will price match like-for-like competitor written quotes within 10 miles of your local dealer.



CONTINUOUS ROADSIDE ASSISTANCE

YOU want the peace of mind you get from our quality service to go even further.

NISSAN PROMISE to provide you with Roadside Assistance for free every time you service your car with us.



HERE FOR YOU

YOU want your problems resolved quickly.

NISSAN PROMISE to propose a resolution to any problem within two working days.



TEST DRIVE YOUR CHOICE

YOU want to test drive the latest Nissan model, engine and gearbox you're interested in buying.

NISSAN PROMISE that's what you'll get when you pre-book your test drive either online or through our customer service centre.

Just call 0330 123 1231.

Please visit nissan.co.uk/promise. Terms and conditions apply.

YOU+NISSAN
OUR PROMISE. YOUR EXPERIENCE.



NISSAN MOTOR (GB) LIMITED

The Rivers Office Park
Denham Way
Maple Cross
Rickmansworth
Hertfordshire
WD3 9YS

Visit our website at: www.nissan.co.uk

Prices effective from 1st April 2018 unless otherwise stated

Dealer stamp:

[Exterior Design](#) | [Interior Design](#) | [Technology & Performance](#) | [Style & Accessories](#) | [Technical Specifications](#) | [CO2 emissions](#) | [Further Information](#) | [Commitments](#)

[Print](#) | [Close](#)

REQUEST A TEST DRIVE