

How to do textile applications with HP Latex 700 and HP Latex 800 Printer Series

This document will explain how to work on different types of textiles, frontlits, backlits, and interior decoration.

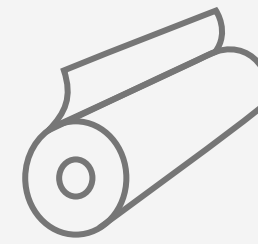
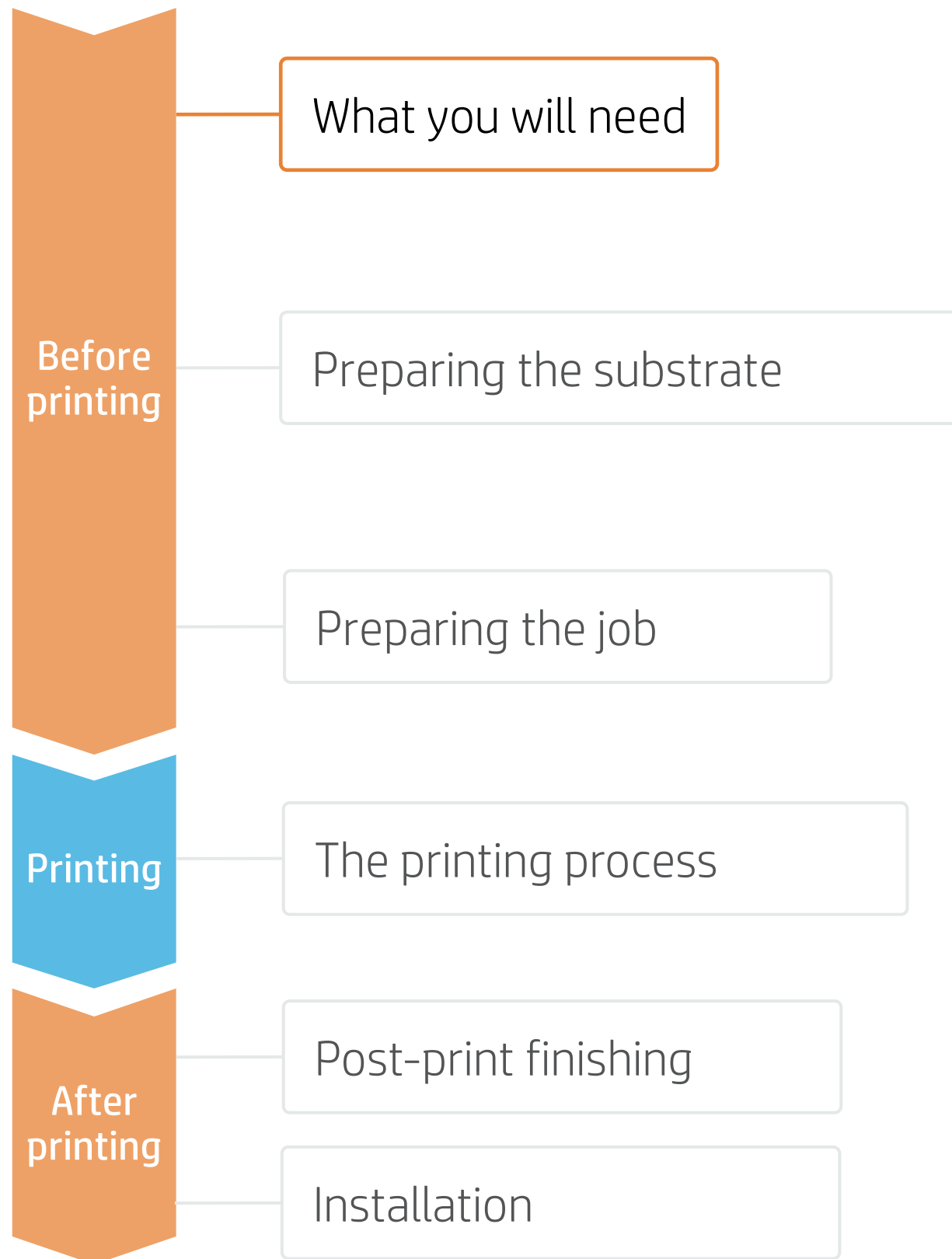
A deep dive training about HP Latex 700/800 Printer series – Textile applications are available in the Learn App from your PrintOS account. See more details in [this article](#).



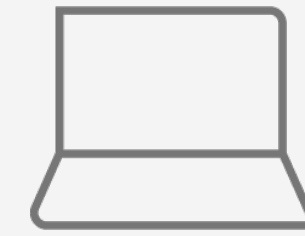
How to do textile applications



What you will need



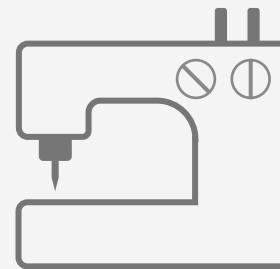
Textile substrates



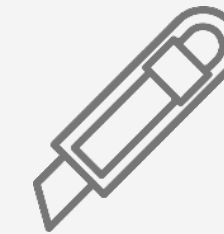
SW tools (RIP, Adobe tools, etc.)



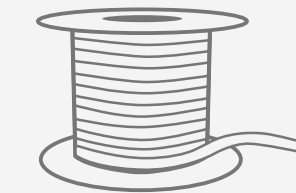
Printer



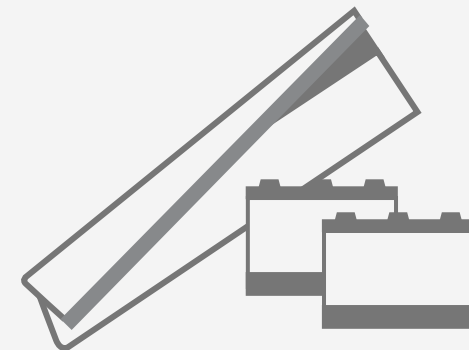
Sewing machine



Cutting device



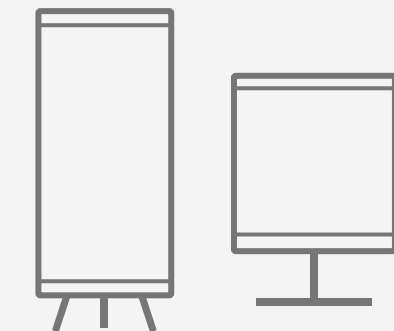
Silicone edge (optional)



Textile kit; ink collector, foams and output platen protector



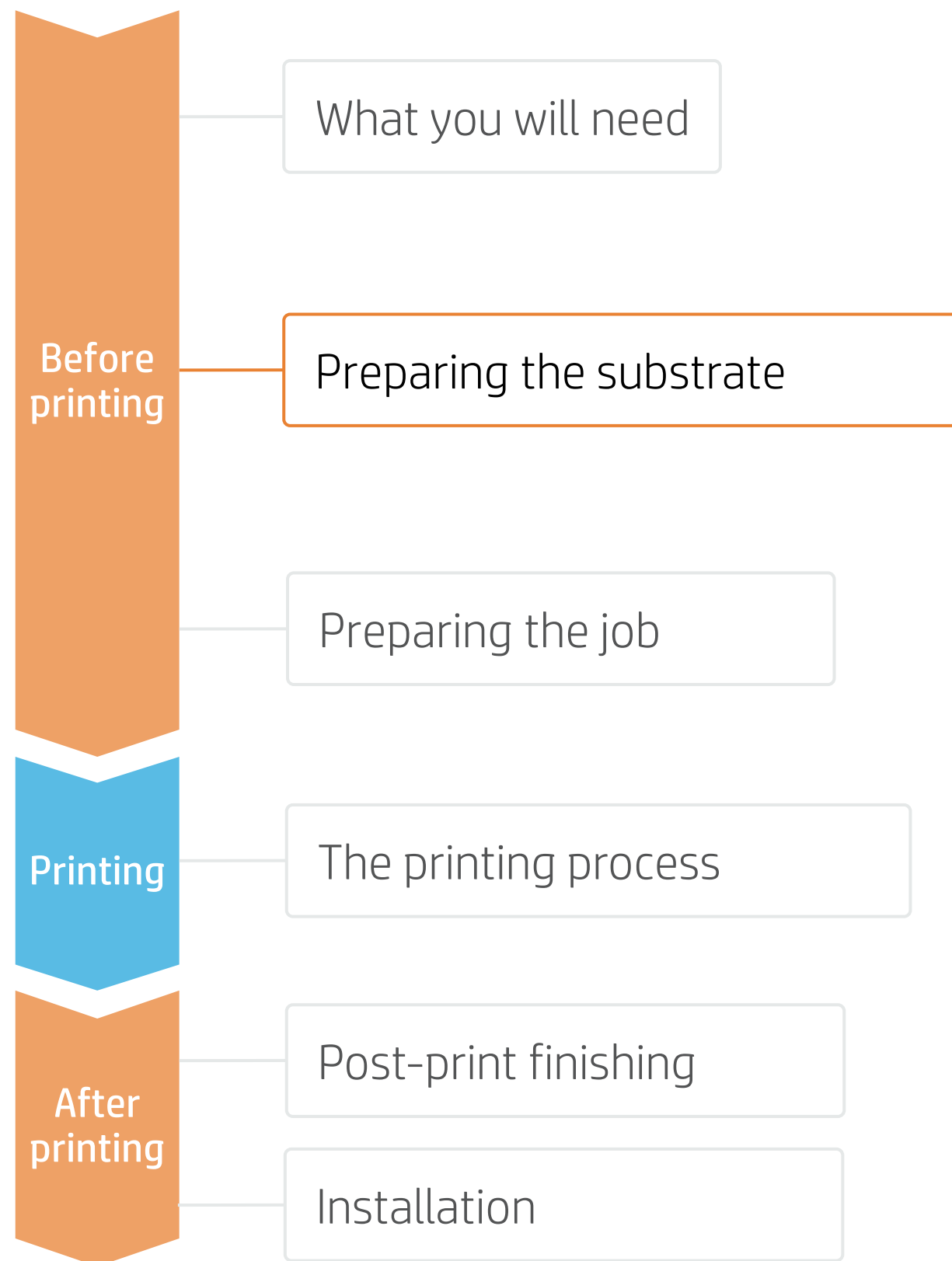
Loading accessory



Display material (frames, light boxes, flags, retractable banners)

How to do textile applications

Preparing the substrate



Make your decision based on your needs

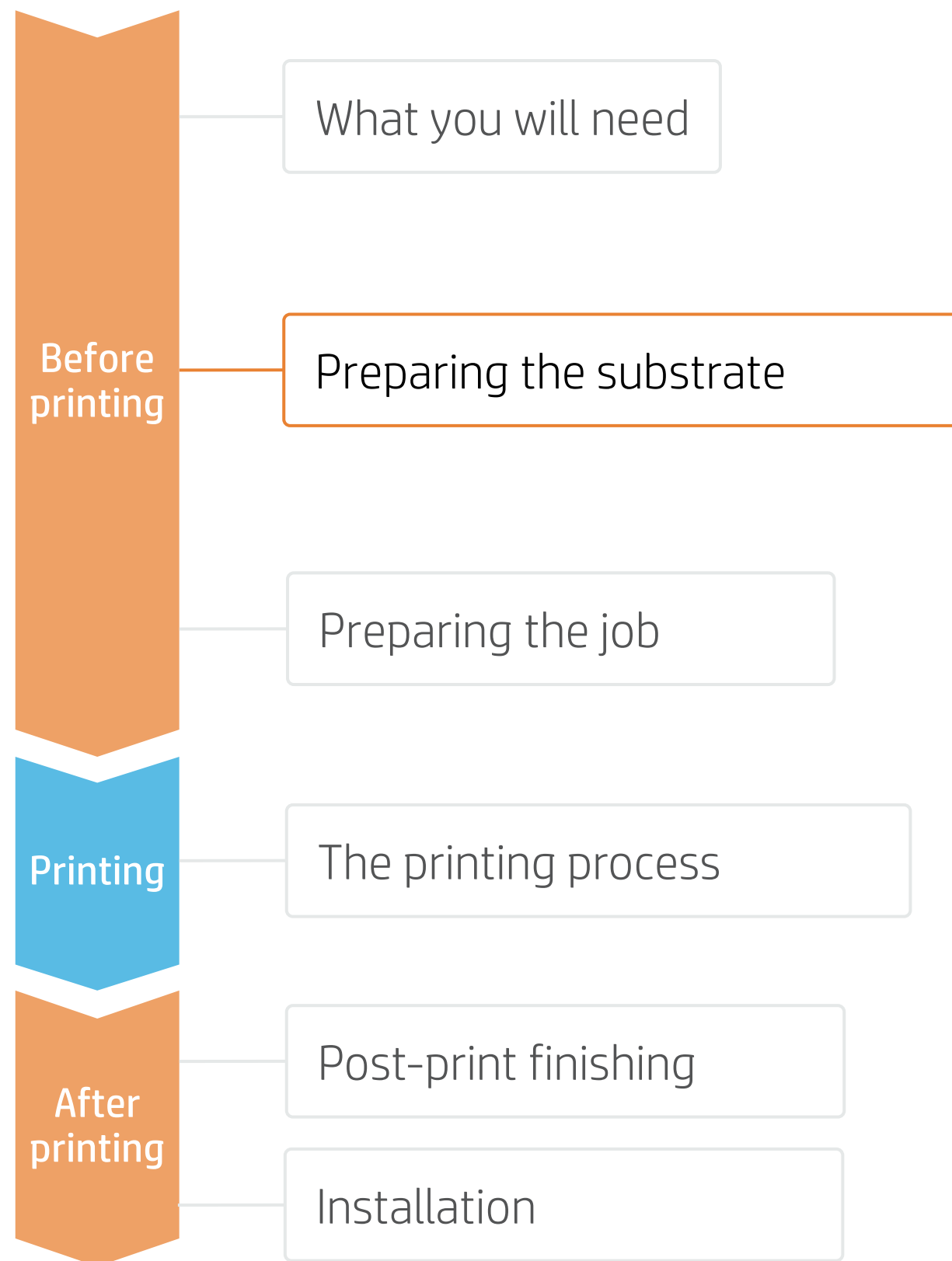
1. Choose the right substrate

- Firstly, understand the requirements of your application. There are different types of textile substrates based on their construction and their final application:

Softsignage		Interior decoration
Applications	Frontlits	Backlits
Substrate material	Mostly substrates 100% polyester	
Fabric finish	<ul style="list-style-type: none"> Coated Uncoated 	<ul style="list-style-type: none"> Coated Treated
	<ul style="list-style-type: none"> Natural fibers (cotton, linen) Polyester textiles 	
	<ul style="list-style-type: none"> Treated 	

How to do textile applications

Preparing the substrate



2. Durable soft signage textiles

One important property of printed textiles used in applications like retail PoP and exhibition graphics is their “dry rub” performance. The standard used to measure the dry rub test is ISO 105-X12.

A. Importance of dry rub resistance

Textiles with good dry rub test results are suitable for **sewing, finishing, and transporting**. Further, they are easily installable without being damaged. HP is constantly analyzing new materials to add to the numbers of textiles that are excellent for use with **HP Latex Inks**.

B. Testing method and classification

Dry rub resistance is measured according to ISO 105-X12, using the Taber Linear Abraser with the crock tool and cotton fabric as abrader.

The colorfastness of the prints has been evaluated. **Textiles with good or excellent results are scored as a 4 or 5, respectively.**

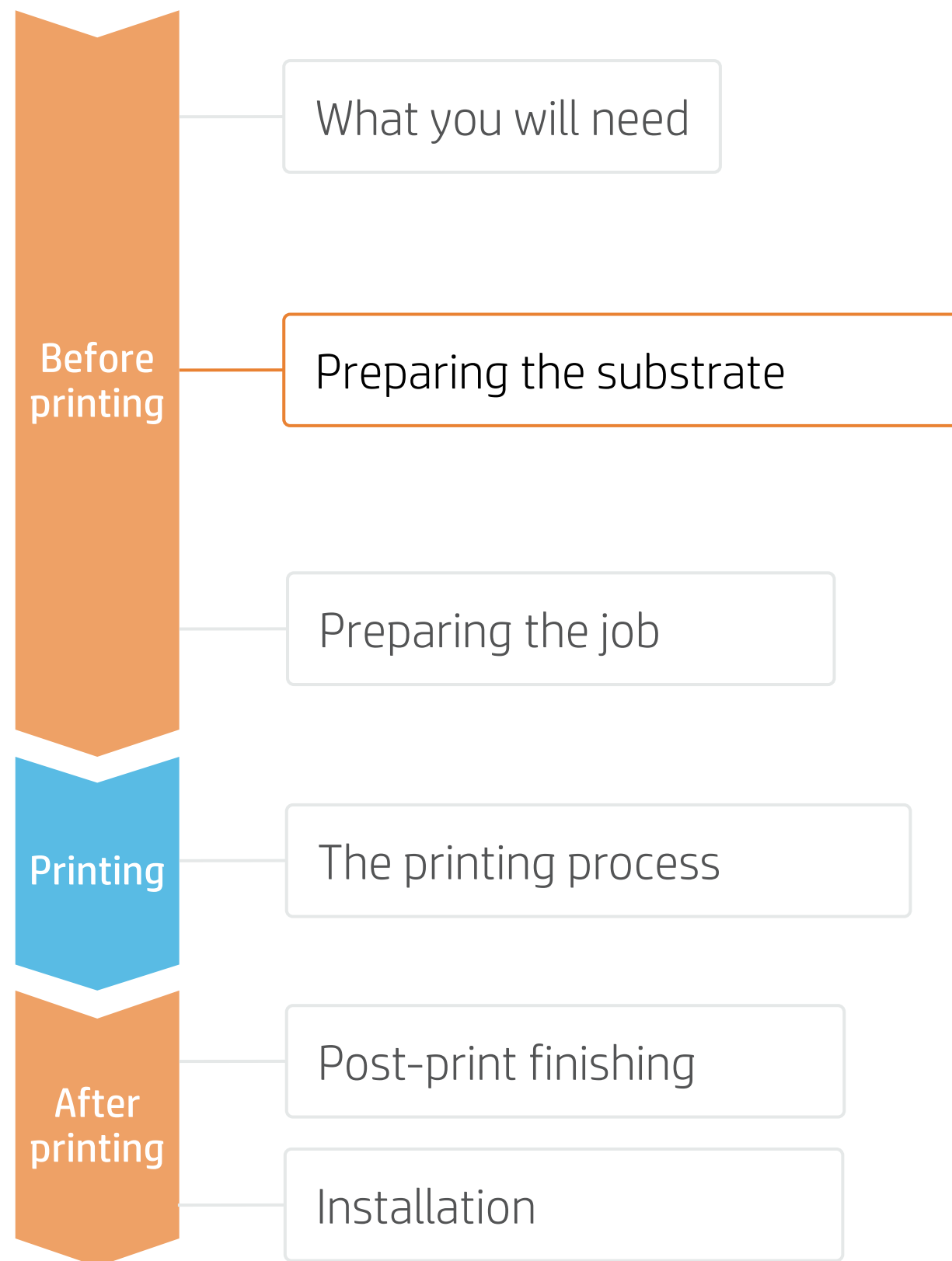
Textiles printed with HP Latex Technology with a dry rub performance equal to or greater than a 4 are a good fit for Soft Signage applications and are classified as Durable Textiles.

Durable Textiles are identified in the **PrintOS Media Locator** with the following logo:



How to do textile applications

Preparing the substrate



3. Substrate presets

- Check that the material you are going to use has its own substrate preset:
 - a) On the **web**, in the HP PrintOS Media Locator: www.printos.com/ml/#/medialocator
 - b) On the printer's **front panel** online search (Substrate Library)
 - c) On the **web**, from the substrate vendor's or RIP vendor's websites
- Download and install.

NOTE: If you cannot find the substrate presets, you can always use the **generic textile** or **generic backlit textile** presets already installed in your printer. If you need to fine-tune some settings, **clone** the existing generic preset and modify it, or create a new one with the **Add new substrate** function on the front panel.

TIP: Learn how to customize your profile by enrolling on the available training HP Latex 700/800 Printer series – Advanced main tasks and maintenance routines on the [Learn with HP website](#).

4. Substrate porosity

- It's very **important to know the porosity of your fabric**, approximately whether it is porous or non-porous.
 - a) If porous, it is necessary to install the **ink collector accessory** on the printer.
 - b) Check the information in the **Technical notes** for your substrate, available in the HP PrintOS Media Locator.
- How to check the porosity of your textile substrate:
 1. Stick a piece of white vinyl on the printer platen.
 2. Print your test file with the printmode you are going to use to print your job.
 3. After printing, unload the substrate and check the piece of vinyl.
 - If it shows ink marks, then the fabric is porous and an ink collector is required.

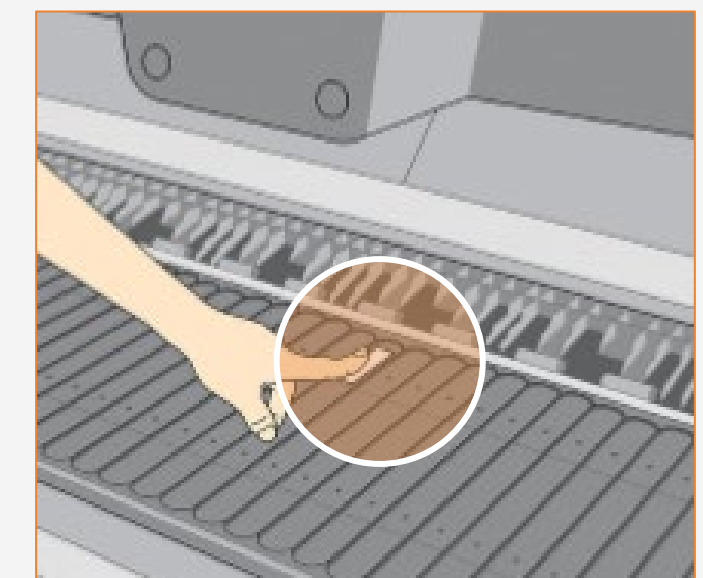
Technical Notes:

Ink collector mandatory

Dry rubbing

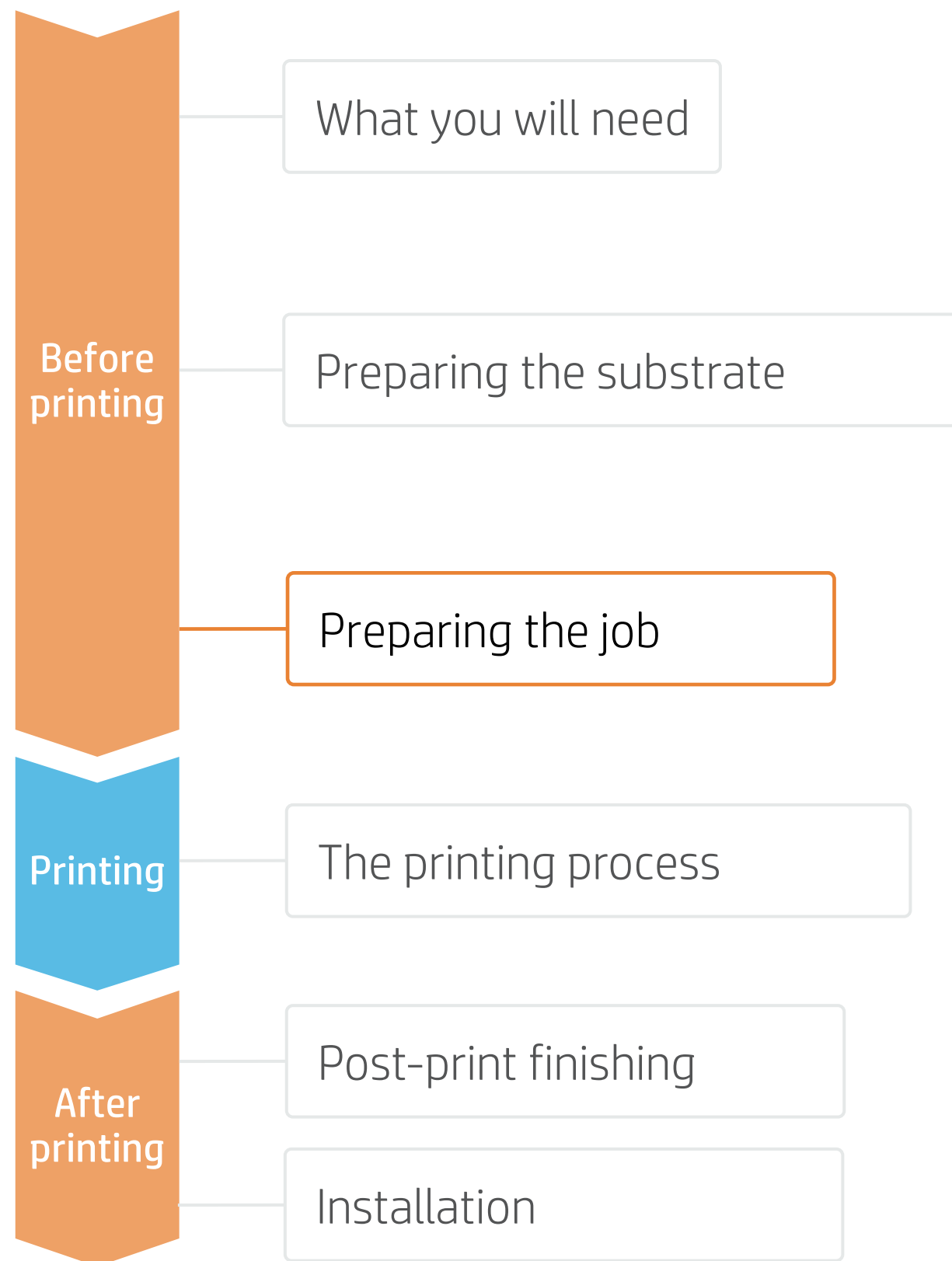
4

ISO 105-X12



How to do textile applications

Preparing the job



1. Software for designing and editing

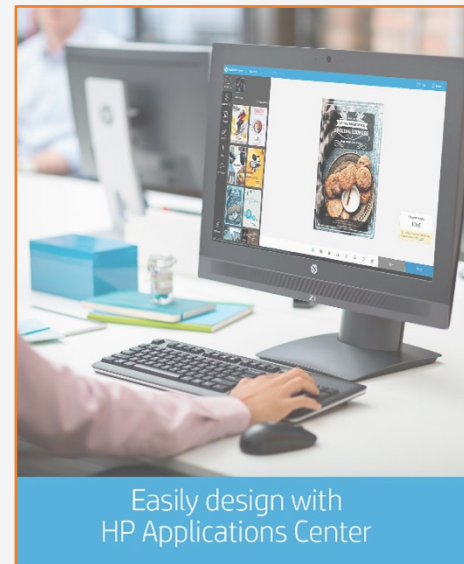
Tools such as HP Application Center (HP WallArt and Hp Signage Suite), Adobe Illustrator, Photoshop, and InDesign help you design and edit jobs and adapt them to your needs.



Make your decision based on your needs



A. HP WallArt and HP Signage Suite



HP WallArt and HP Signage Suite are part of HP Applications center, a complete package of tools to boost your business.

There is a specific application for creating wallcovering jobs.

EXPAND YOUR KNOWLEDGE: For further detailed information regarding the HP Applications center and how to log in for the first time, view the available **webinar** in this [link!](#)

How does it work?

1

Join the platform
Simple, easy sign-in with your HP printer serial number

2

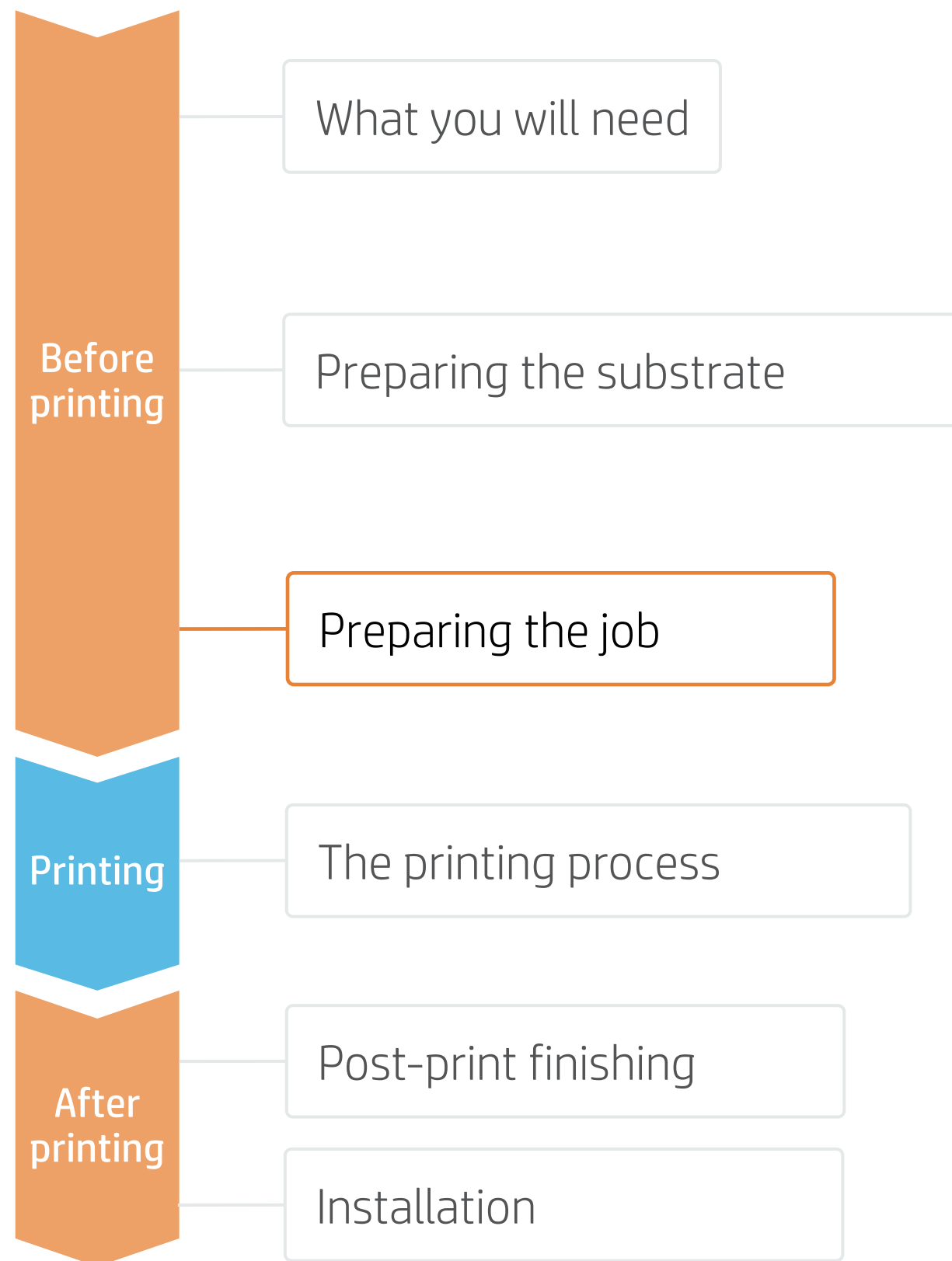
Choose web app
Select the standalone decorative web apps you want to produce and allow your customers to create and visualize the design, with a simulation for each unique environment.

3

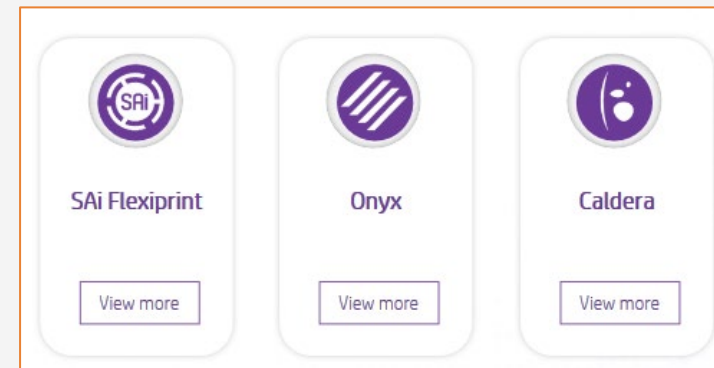
Manage orders
Manage production efficiently with automatic, reliable, print-ready PDF generation, as well as customer, order, and content management tools.

How to do textile applications

Preparing the job



2. RIP processes



ONYX, CALDERA, and SAI RIPs have been certified for HP Latex 700/800 Printers series.

NOTE: Please refer to the specific trainings on RIPs at the PrintOS Learn App.



Make your decision based on your needs



A. Substrate & Printmode selection

NOTE: Before selecting the substrate in the RIP, it must be loaded on the printer

- Choose the substrate type (Textile), then select the specific substrate you have loaded on the printer, or a generic preset.
- Next, choose the printmode:

Substrate	Printmode
Frontlits	14p170ink or 18p200ink.
Backlits	14p200ink or 18p260ink
Interior decoration	12p130ink or 14p 150ink

B. Image size & tiling

- Modify the image size to adapt it to your specific display.



Silicone edges. Normally 1.5cm wide silicone edge is sewn and inserted in the box rail. Scale the image or apply bleed accordingly at the for edges.



Velcro strips. Used in frontlits; in this case the image matches the display size.

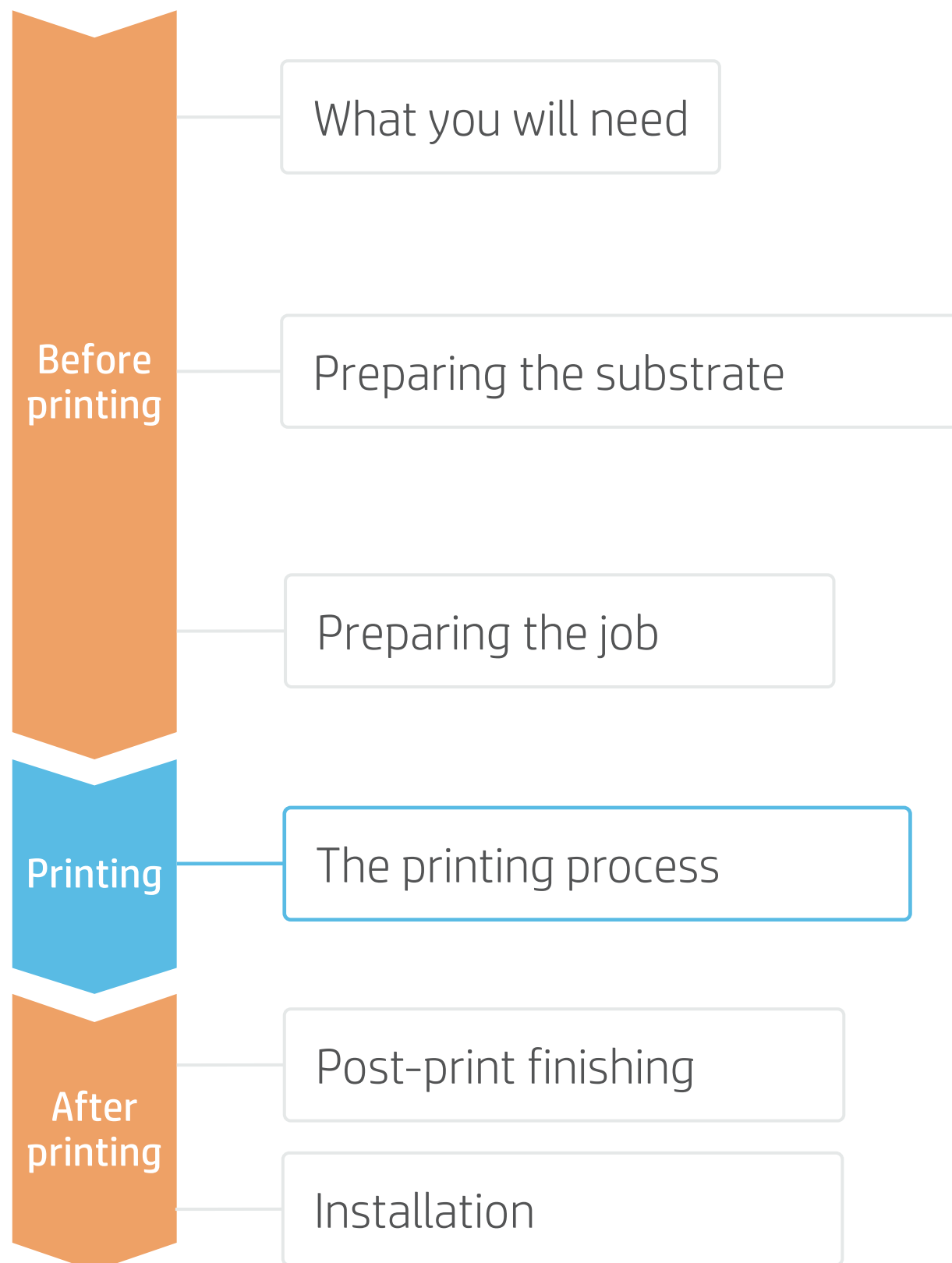
C. Finishing: cutting marks & other

- Select the automatic cutter you will use for cutting your jobs.
- Configure the cutting marks for that cutter: trim box, placement, and type of barcode.
- Add **labels** to identify each tile.

NOTE: Each RIP has different ways to set the cutting marks. Please refer to the RIP manuals.

How to do textile applications

The printing process



Load the substrate | Ink collector & loading accessory



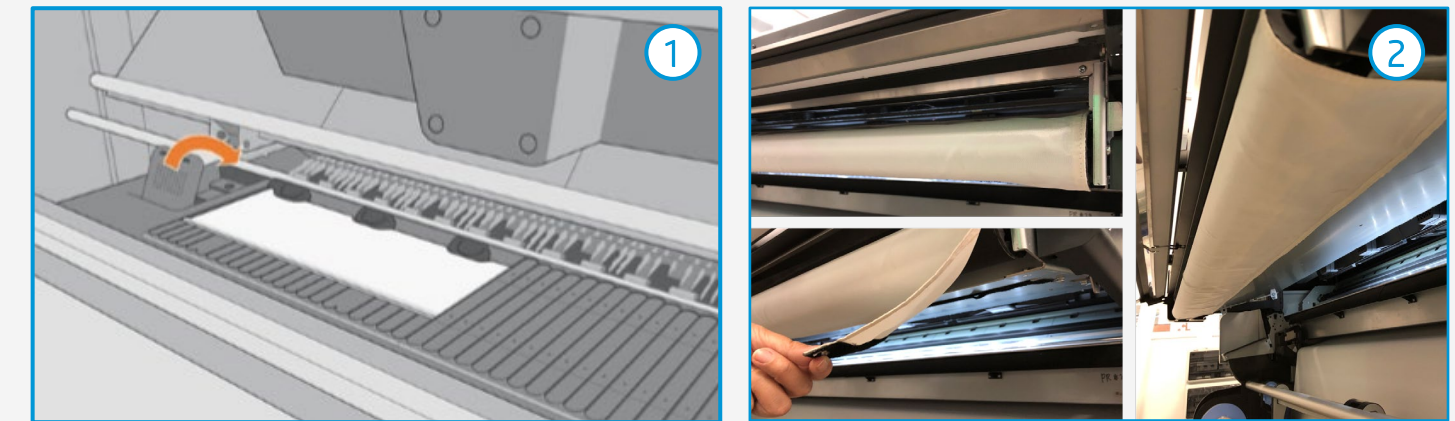
NOTE: Perform the printhead nozzle check and printhead alignment on white self-adhesive vinyl **before** loading a textile,

- 1. Ink collector (optional)**
Be sure you have installed the ink collector **when** the fabric is porous.

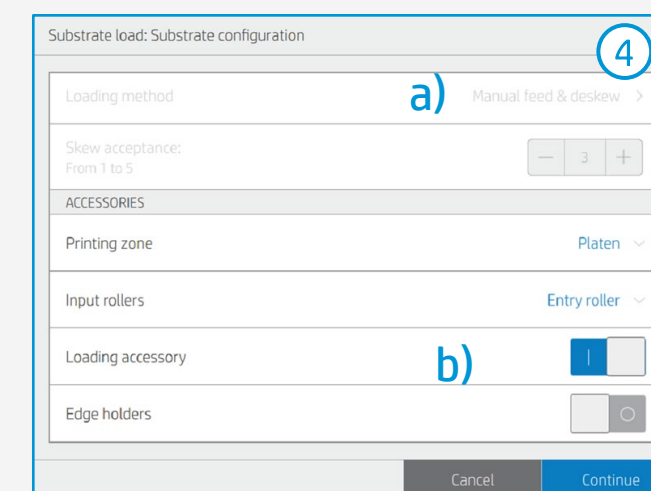
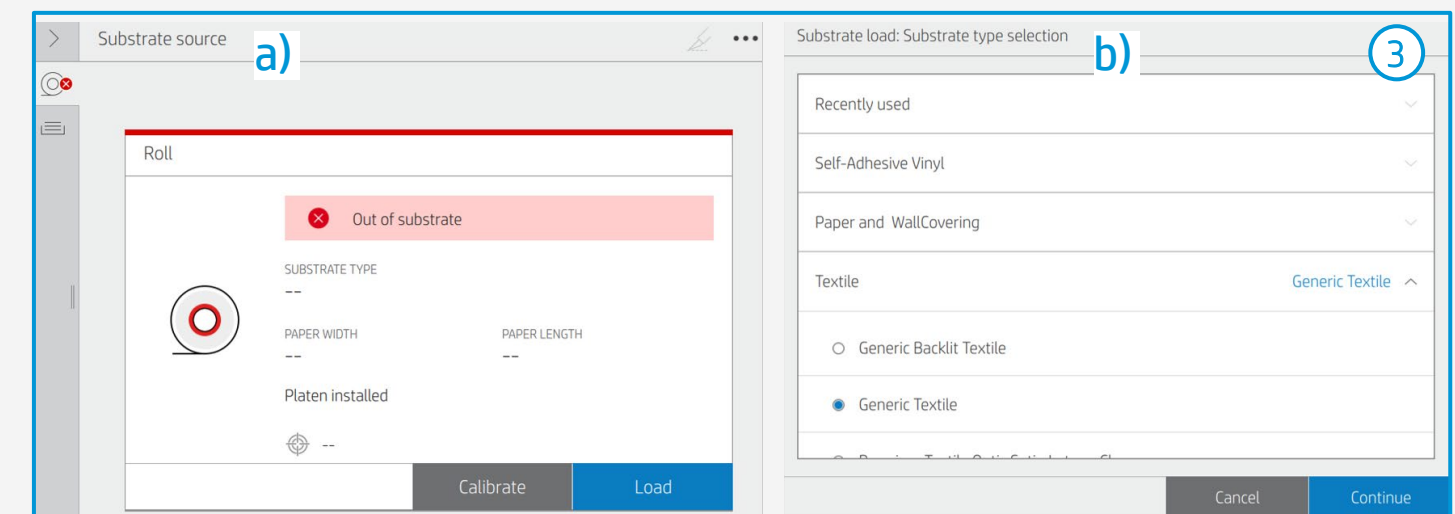
- 2. Install output platen protector (OPP)**
If printing more than 10 m² per day, HP recommends using the OPP.

- 3. Load substrate from printer Front Panel**
 - a) From the substrate menu, tab **Load substrate**.
 - b) Select the downloaded substrate or select a generic from **Textile** and tab **Continue**

- 4. Select the loading options**
 - a) Select **Manual feed & deskew**.
 - b) Select **Loading accessory** and tab **Continue**.



TIP: Before loading the substrate, check the printing side of your fabric: usually, the print side is on the inside in most fabrics for digital printing.

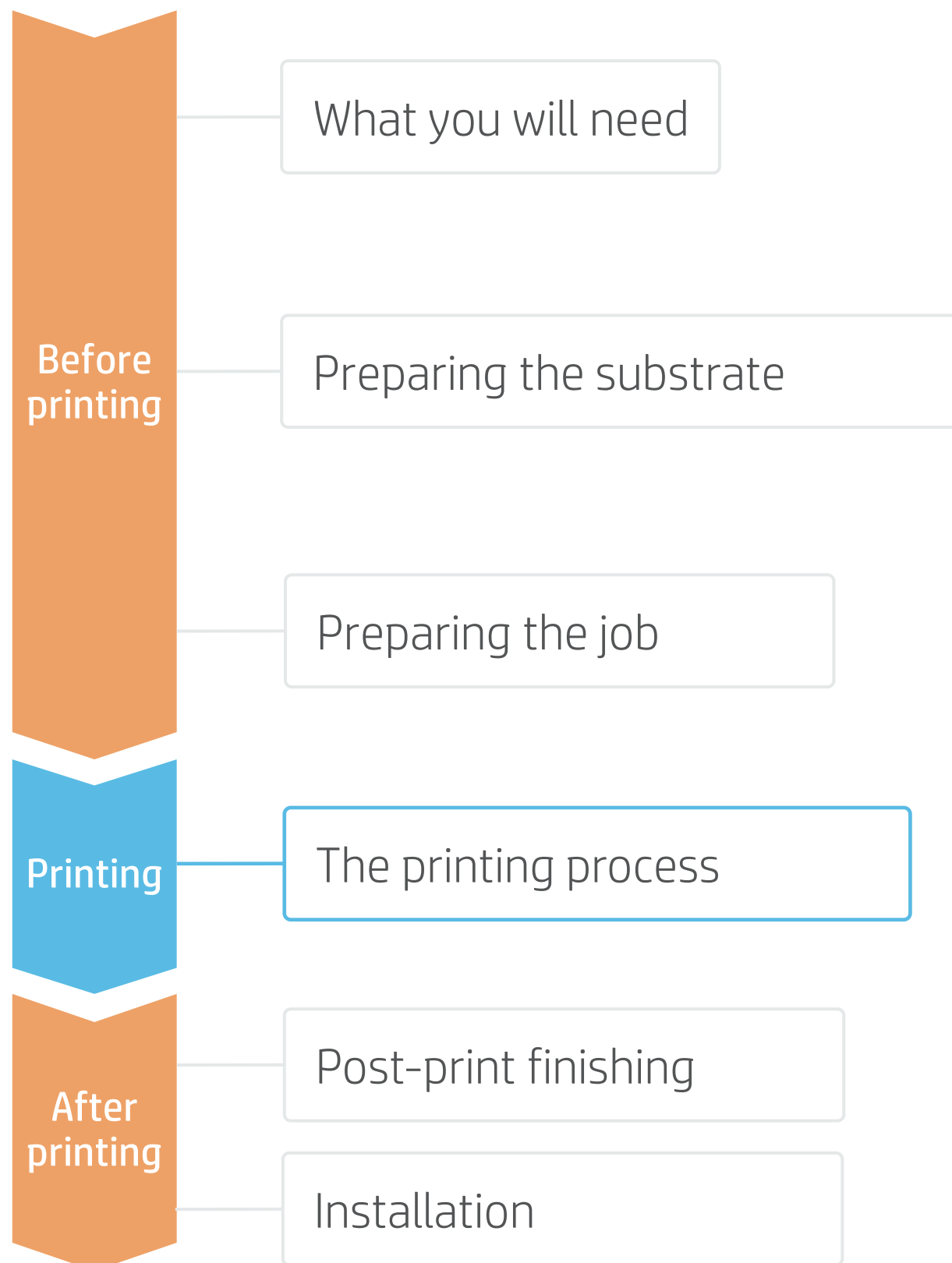


TIP: Ensure that the loading accessory is aligned with your substrate width.

NOTE: Please consult the [User Guide](#) for further details on ink collector, output platen protector, and loading accessory installation.

How to do textile applications

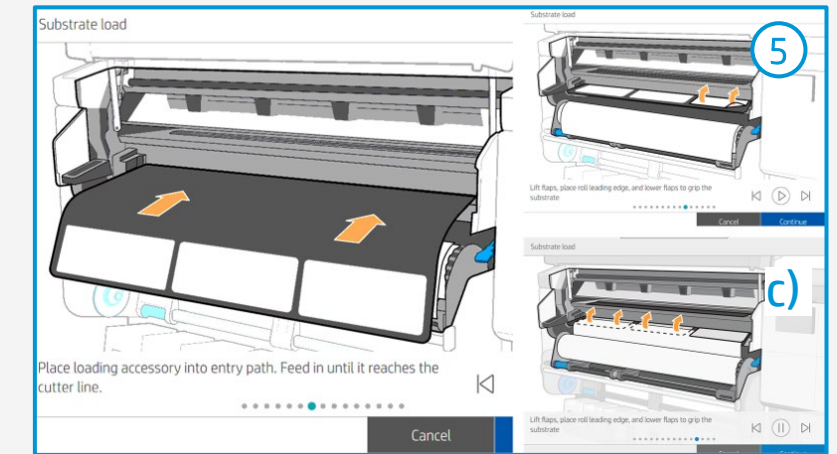
The printing process



Load the substrate | Ink collector & loading accessory

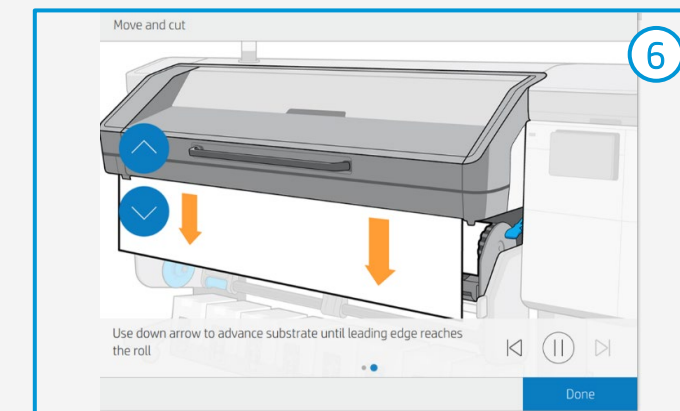


5. Load substrate with loading accessory
 - a) Lift the curing module.
 - b) Follow the Front Panel instructions on how to insert the accessory and the substrate.
 - c) Once the accessory is inserted up to the printing platen and the substrate is attached with the flaps, lower the curing module and tab **Continue**.



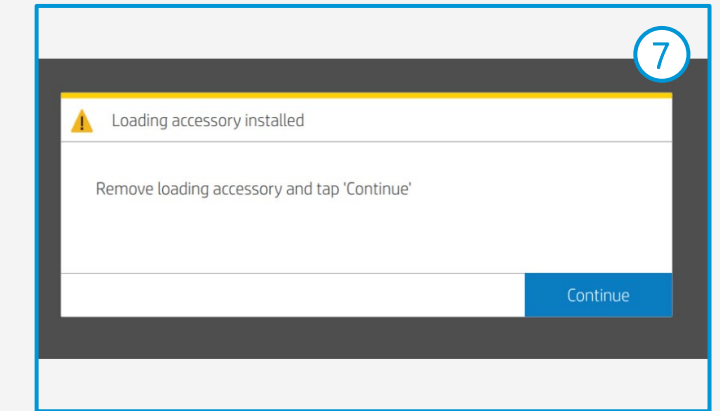
6. Move substrate

Using the arrows, advance the substrate down until the TUR position. Tab **Done**.



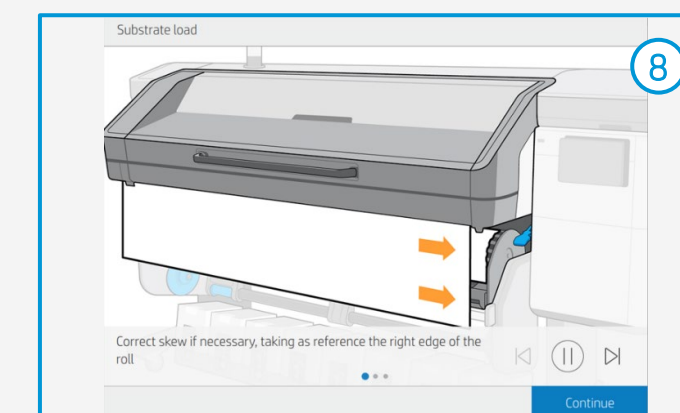
7. Remove loading accessory

Front panel pops up a message to remove the loading accessory. Tab **Continue**.



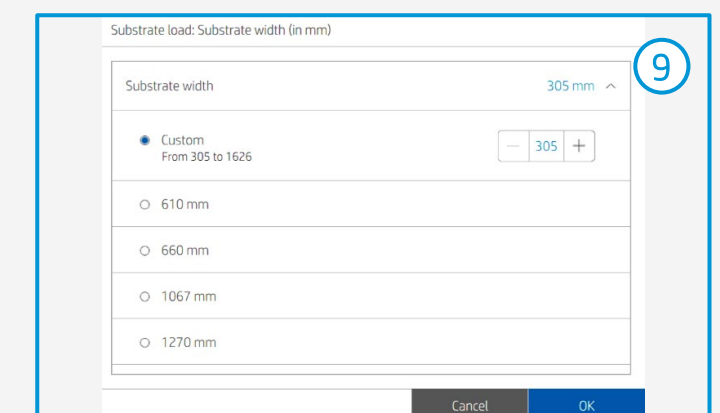
8. Adjust substrate skew

Next step is to align substrate. Follow the Front panel instructions and tab **Continue**.



9. Set substrate width

Input the substrate width and tab **OK** to finalize.



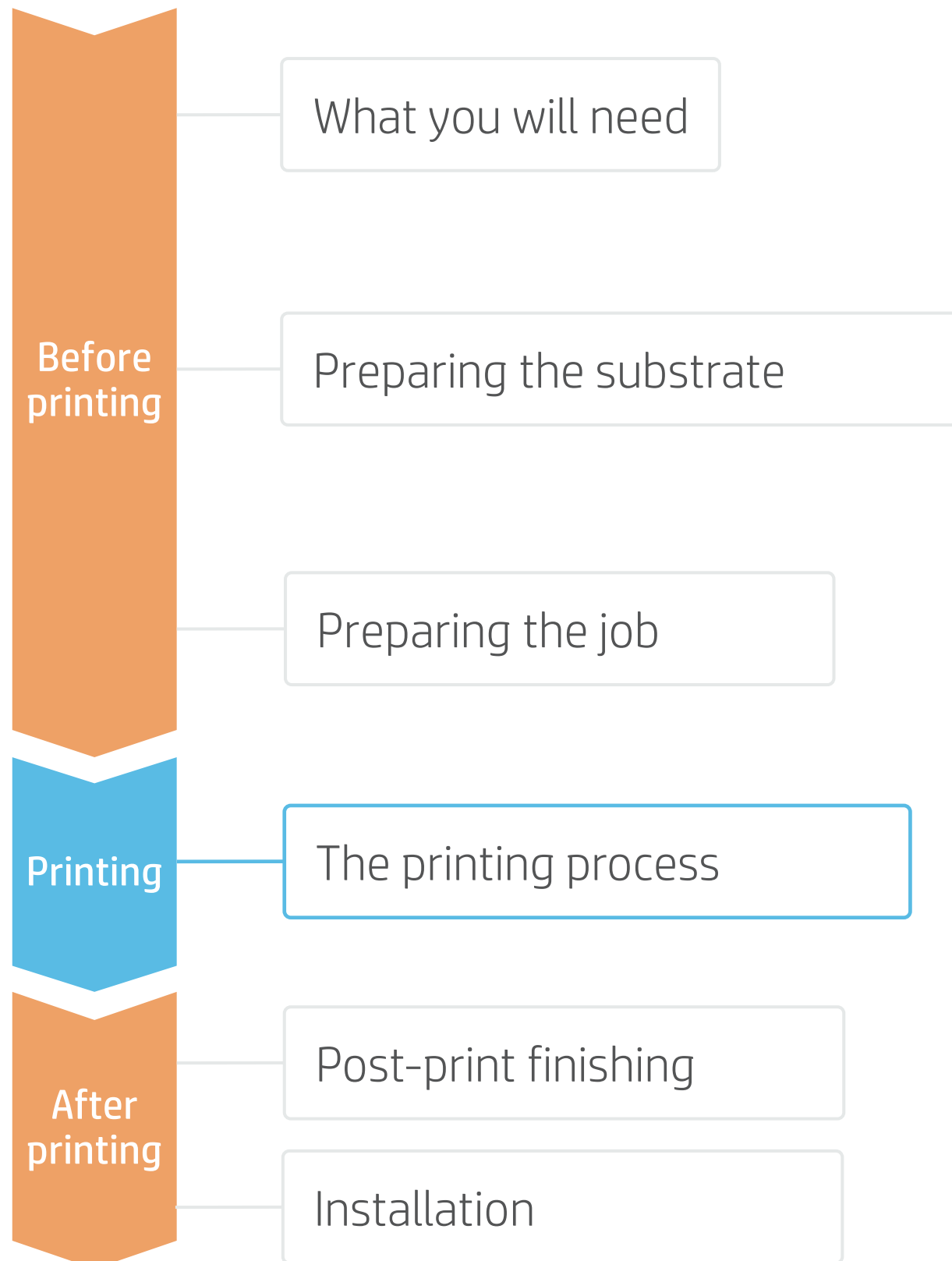
10. Connect substrate to take-up reel

Follow the instructions in the next section.

TIP: TUR is mandatory when printing on textiles.

How to do textile applications

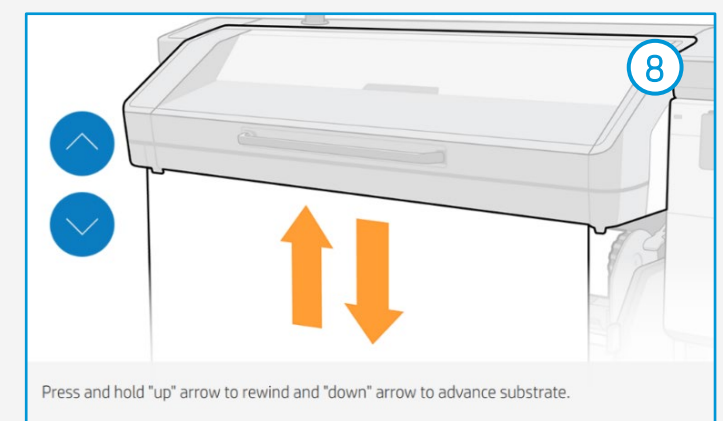
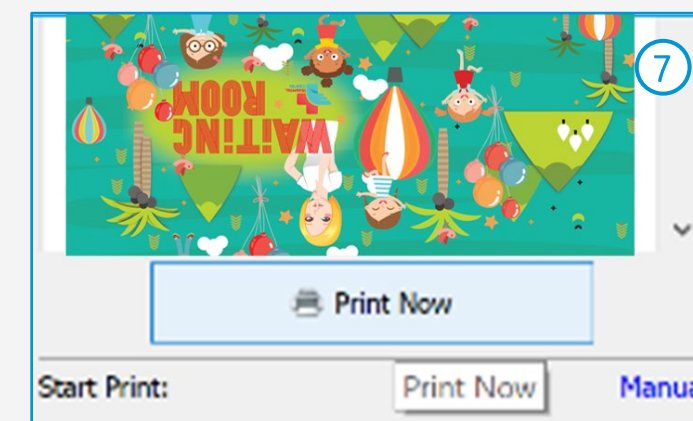
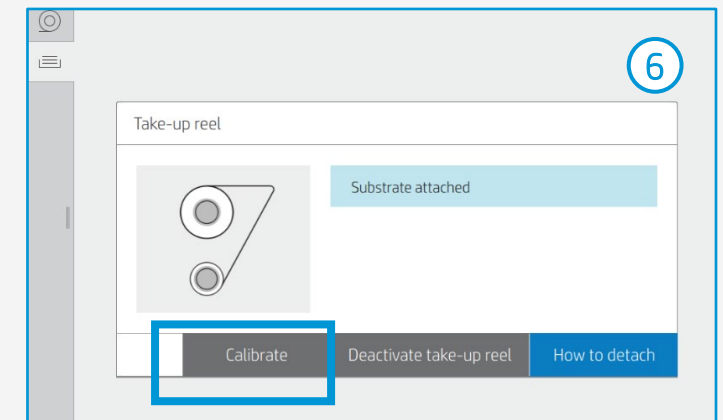
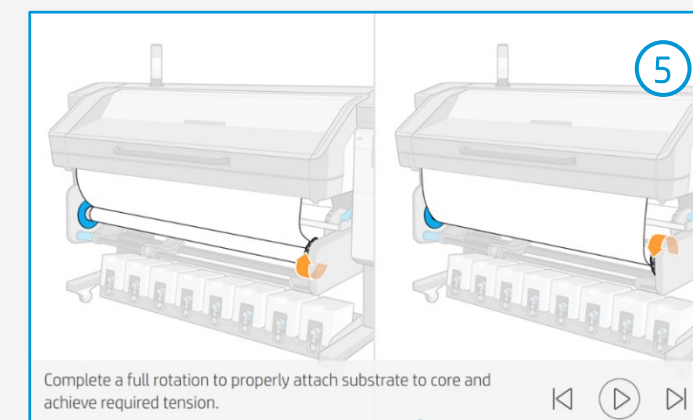
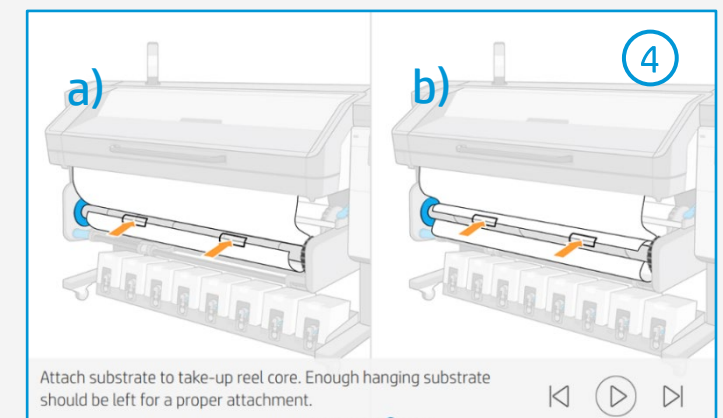
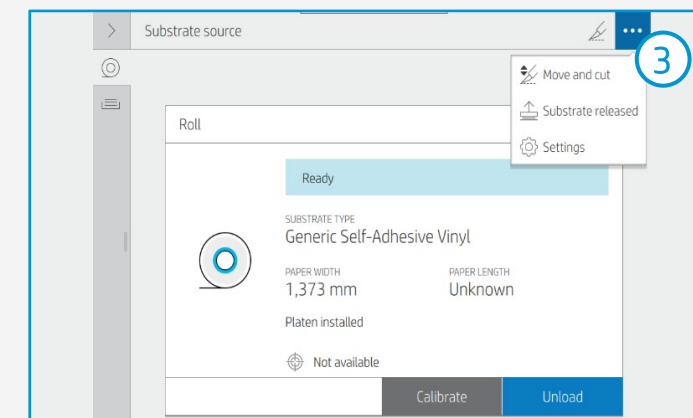
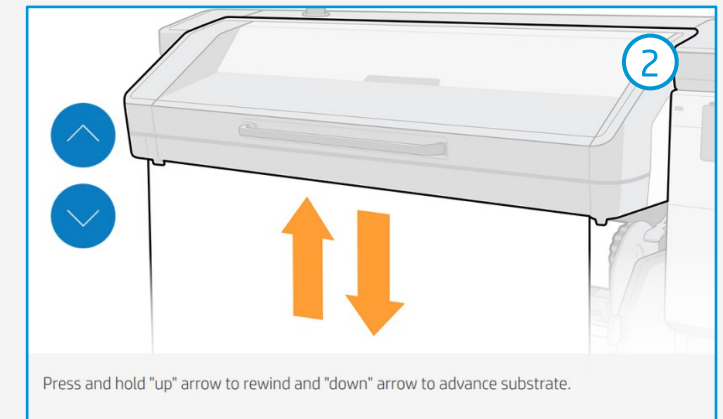
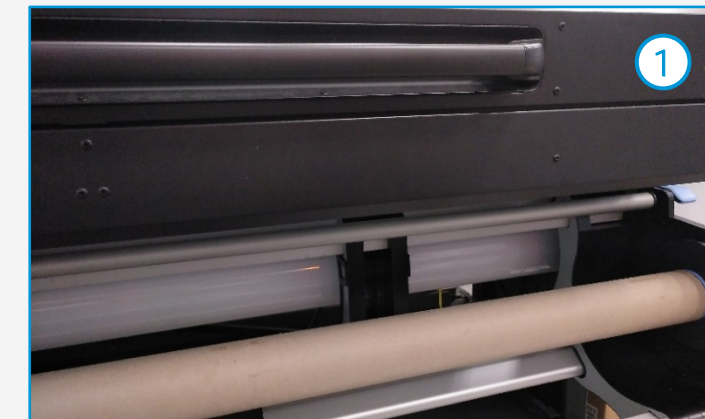
The printing process



Load the substrate | Connect to the take-up reel (TUR)



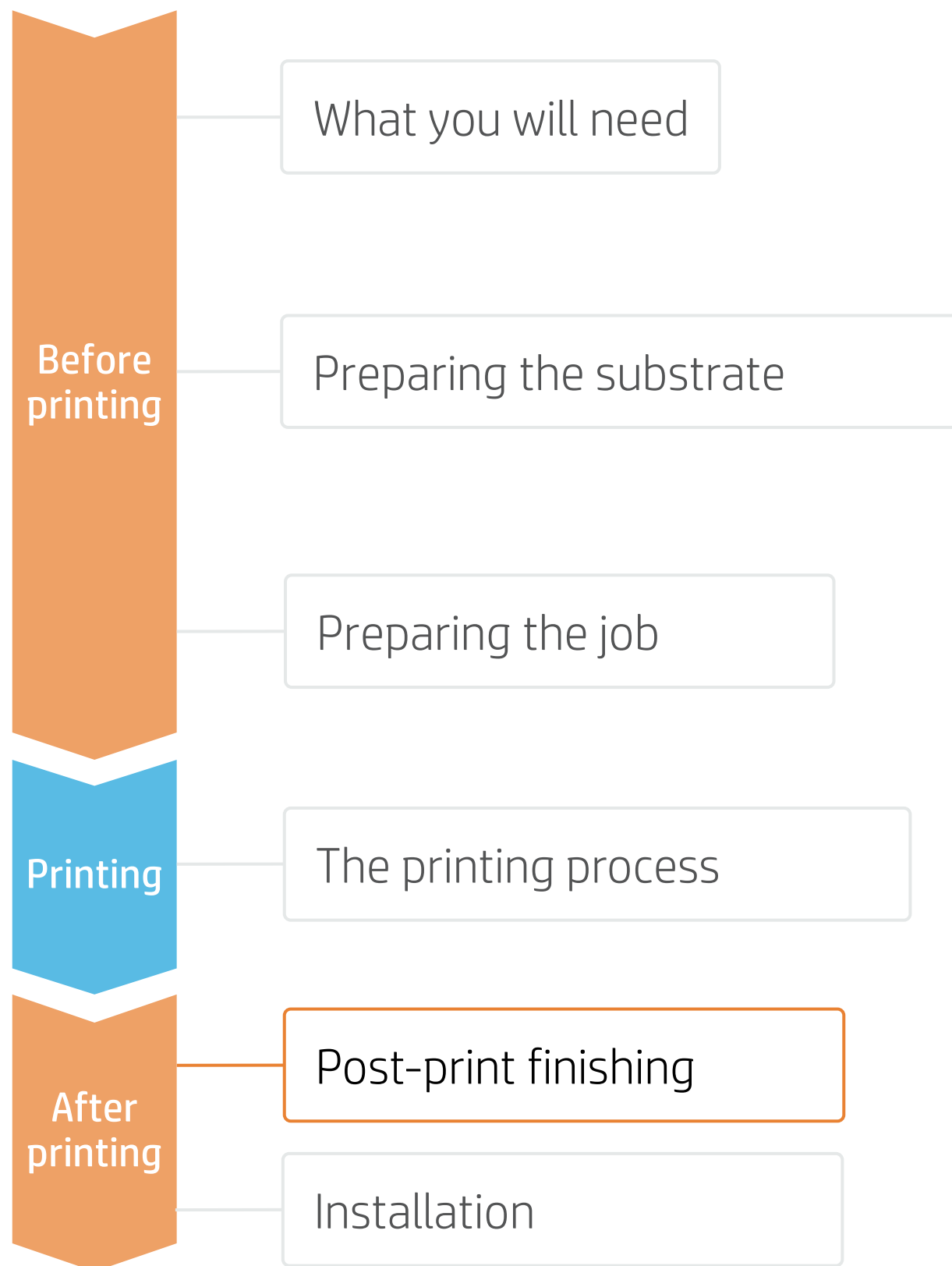
- 1. Prepare the TUR**
Attach an empty core on the TUR.
- 2. Move substrate**
Move enough substrate to be able to wind a couple of turns.
- 3. Release substrate from pinches**
For better alignment with the TUR core.
- 4. Attach substrate to the TUR**
You can attach the substrate so that the printed side is **in (a)** or **out (b)** (out is most common).
- 5. Activate the TUR**
Complete a full rotation of the TUR.
- 6. Calibrate the TUR**
Select **Calibrate** on the front panel.
NOTE: Calibrate TUR is disabled when the ink collector is installed.
- 7. Send job to print from RIP**
 - Check the RIP has **synchronized** the loaded substrate with the printer.
 - Select the correct printmode and set any other settings (copies, placements, etc.).
 - Click **Send to print**.
- 8. Cut & retrieve printed roll**
Textiles must be cut **manually**. Printer's cutter is disabled for textiles.



TIP: Before cutting the printed job, advance the substrate so you protect the printed roll when unloaded.

How to do textile applications

Once printed, what else?

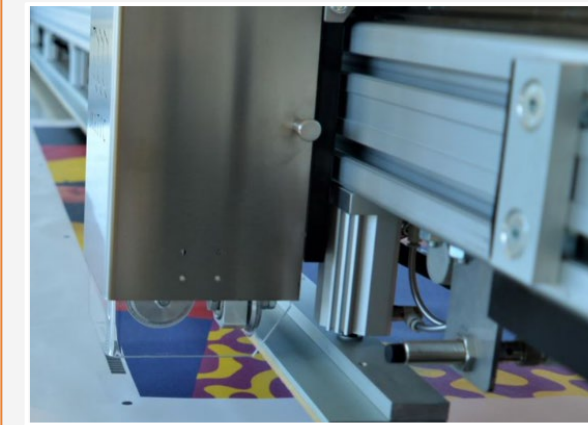


1. Cutting

HP Latex prints are compatible with all standard techniques. However, some techniques are more suitable for particular materials than others.



Ultrasound
Polyester fabrics



Pressure knife cutter

- Polyester fabrics
- Natural fiber fabrics

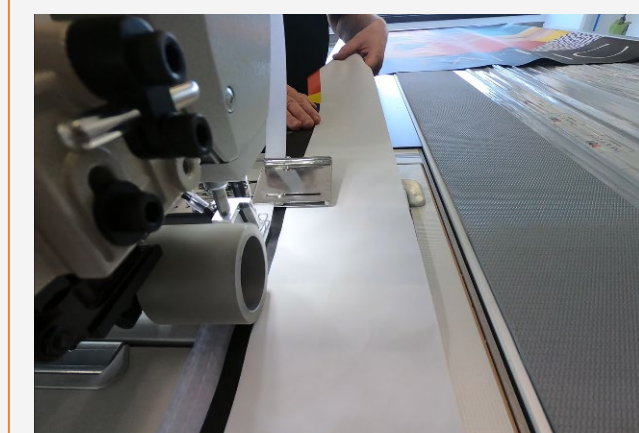
TIP: If your fabric tends to **fray** at the edges, you can always **sew** them.

2. Sewing elements

In order to mount the fabric on metal frames, light boxes, or frontlit displays, two common solutions are silicone edges (SEG) and Velcro strips.



SEG

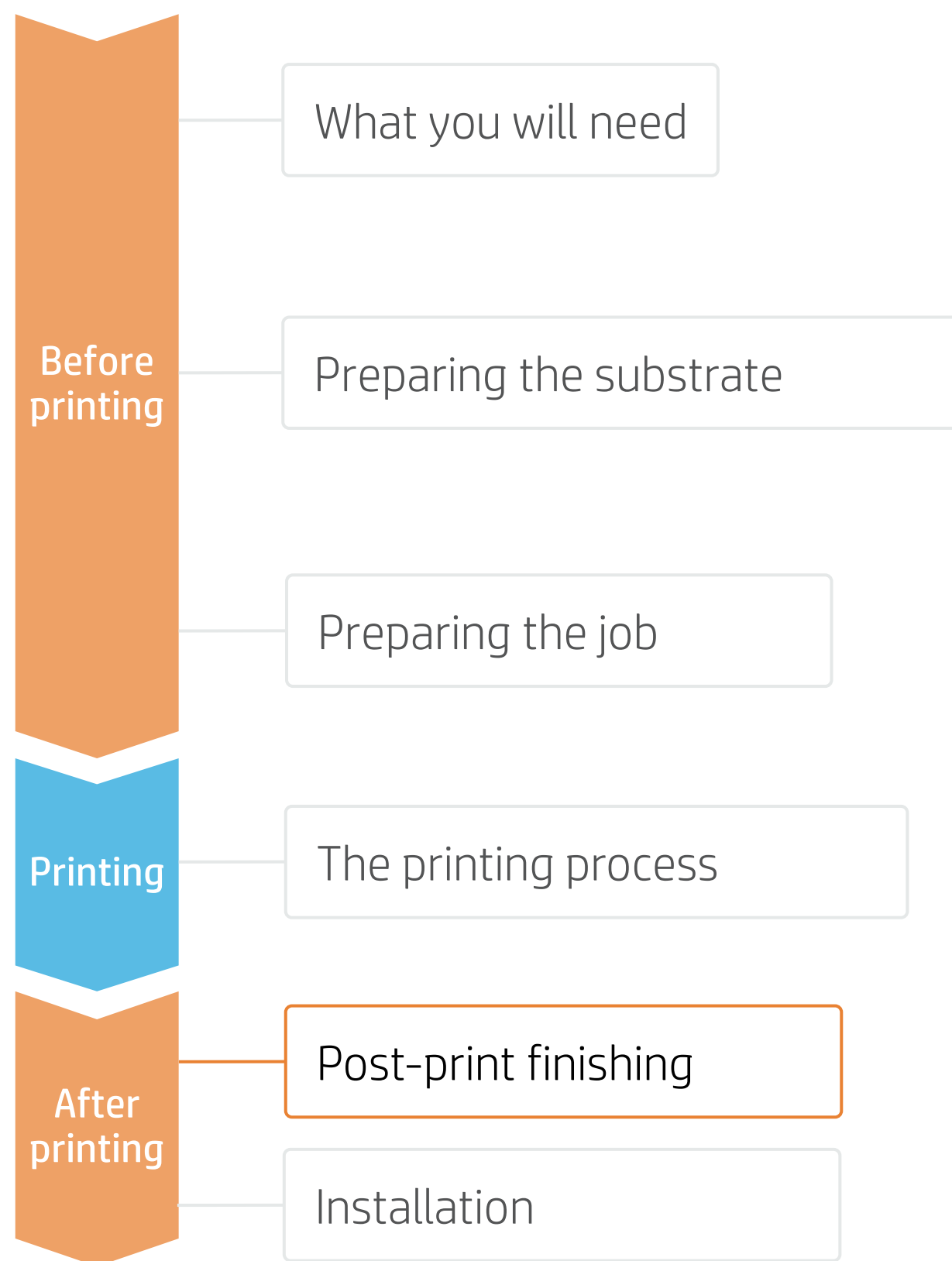


Velcro

NOTE: When working with **backlit fabrics**, avoid crinkle, friction with hard surfaces, and folding the fabric. Latex prints can be damaged during finishing operations. Although not visible with front light, defects may appear when back lighted.

How to do textile applications

Once printed, what else?



Tips for home decoration fabrics

1. Substrates

Not all fabrics can be categorized as “washable” after being printed with HP Latex 700 and HP Latex 800 Printer Series.

Media vendor	Substrate
Premex Duravibe	5014 Optic Satin Latex coated
	5966 Optic Twill Latex coated

NOTE: The fabrics listed here have a **special top-coating** that is **activated by heat and pressure**, and thus raises the washing resistance of the printed fabrics.

2. Heat fixation for washing resistance

Printed fabrics need to undergo a heat-fixation process after printing to achieve good resistance to **washing***. Use the following parameters:

Temperature	175°C ±5°C (347°F ± 40°F)
Time	80 seconds

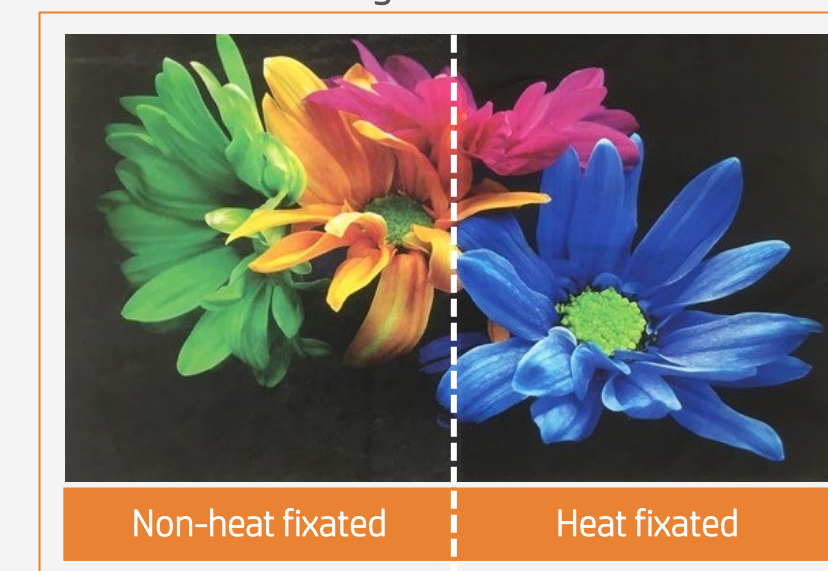
3. Heat fixation methods

There are several types of heat presses available on the market:

- Clamshell heat presses
- Hot air heat presses
- Infrared heat presses
- Heat-fixation units (electrically heated)
- Calender rotary heat presses

NOTE: * Washing resistance is evaluated by washing the fabrics insideout, in a domestic washing machine, throughout 5 washing cycles (cold water, no spin dry, 1h cycle and line-dried).

Result after washing

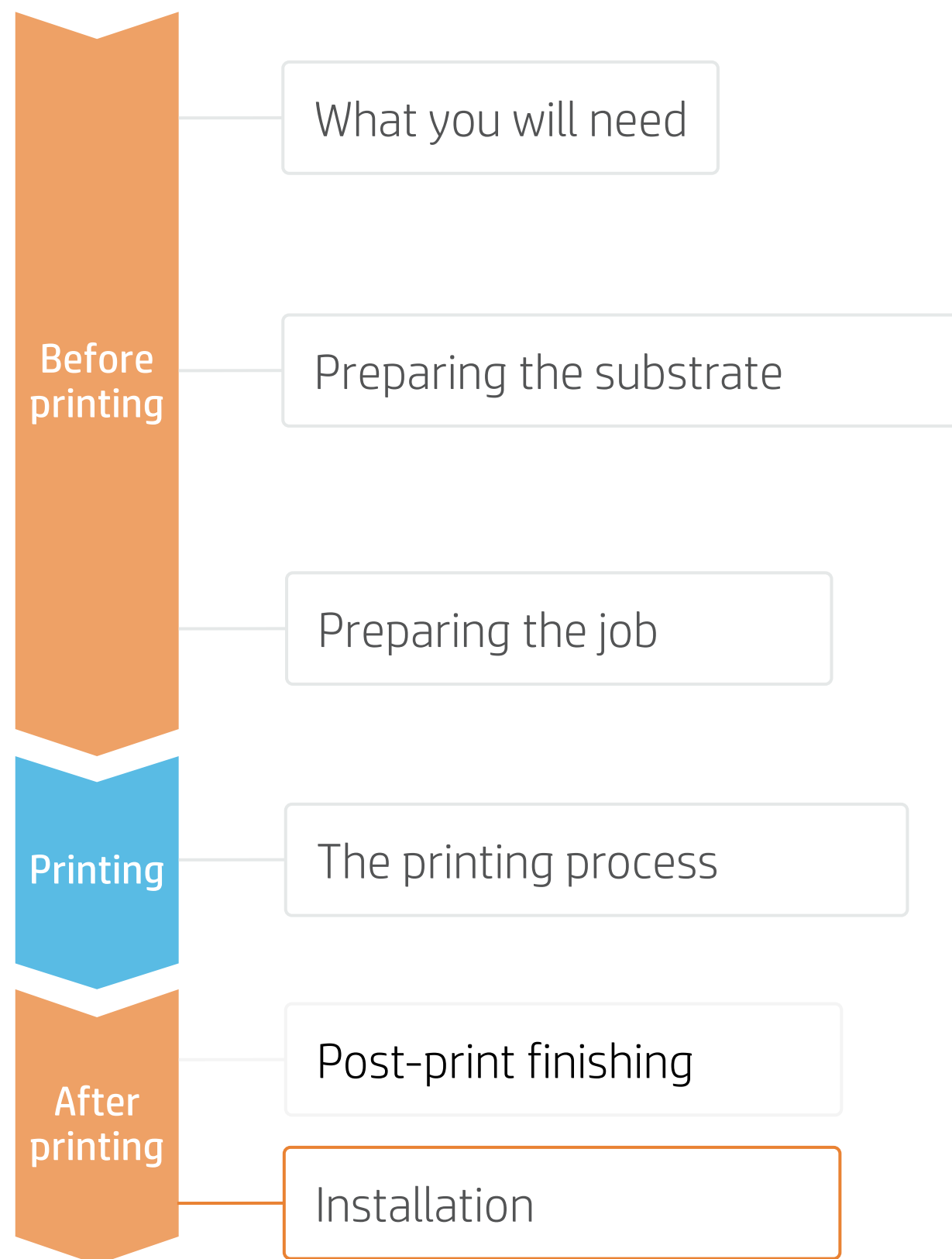


4. Washing recommendations

1h	Max. 30°C	(0-400 rpm)	Air-drying

How to do textile applications

Once printed, what else?

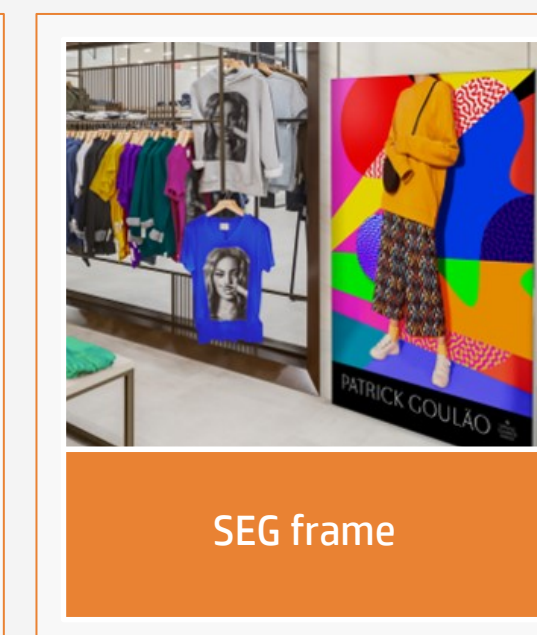
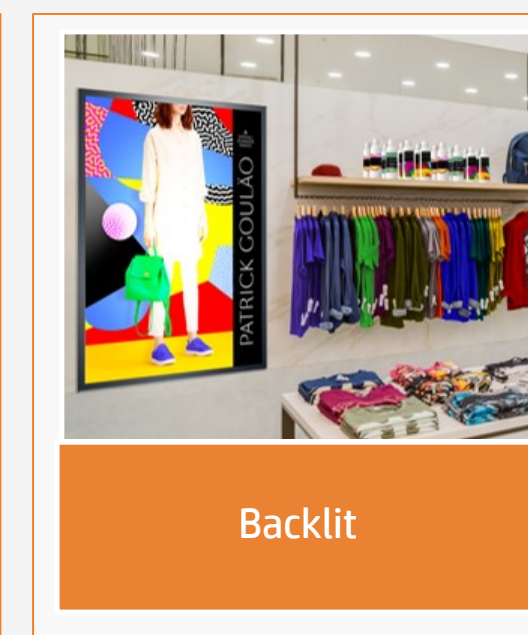
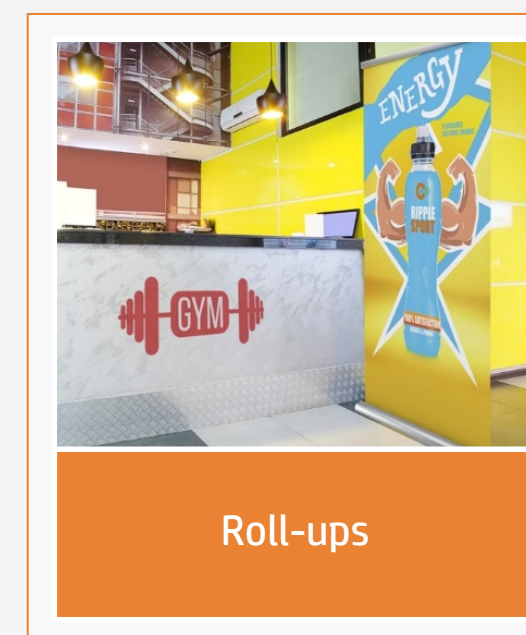
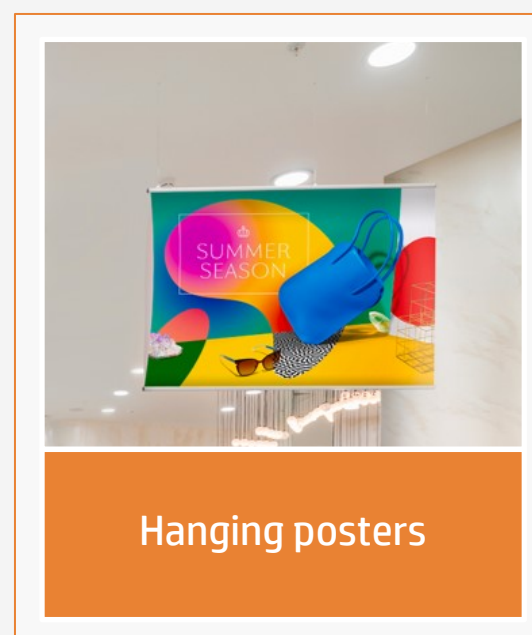


1. Handling

- Avoid crinkle, friction with hard surfaces, and folding the fabric.
- Some latex prints can be damaged during finishing operations. Although not visible with front light, defects may appear when back lighted.
- Roll the fabric on a core with print side inwards to avoid folding marks.



2. Different display possibilities



How to do textile applications

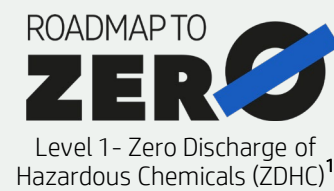
Remarks

- Print onto polyester and cotton fabrics, with or without an inkjet coating.
- Trouble-free printing onto porous textiles, with the HP Ink Collector.
- The new HP Latex inks are ideal for indoor decoration applications since they are certified: Roadmap to Zero Level 1 – Zero Discharge of Hazardous Chemicals (ZDHC), UL Ecologo, UL GREENGUARD Gold certified.
- With HP Latex 700 and 800 printer series, you can print onto textiles at speeds of up to 20m²/h.

Learn more at:

- [HP Latex Knowledge Center](#)
- [Learn with HP](#)

Certifications:



Level 1- Zero Discharge of Hazardous Chemicals (ZDHC)¹



Inks meet stringent health and environmental criteria²



Unrestricted, full room. No-wait installation or lamination³

¹Zero Discharge of Hazardous Chemicals. Applicable to HP Latex Inks. The ZDHC Roadmap to Zero Level 1 demonstrates that an ink conforms to or meets the standards of the ZDHC Manufacturing Restricted Substances List (ZDHC MRSL) 1.1, a list of chemical substances banned from intentional use during production. ZDHC is an organization dedicated to eliminating hazardous chemicals and implementing sustainable chemicals in the leather, textile, and synthetics sectors. The Roadmap to Zero Program is a multi-stakeholder organization which includes brands, value chain affiliates, and associates, that work collaboratively to implement responsible chemical management practices. See [roadmaptozero.com](#).

²Applicable to R Series and 700/800 Printer series HP Latex Inks. UL ECOLOGO® Certification to UL 2801 demonstrates that an ink meets a range of multi-attribute, lifecycle-based stringent criteria related to human health and environmental considerations (see [ul.com/EL](#)). HP is the only printing company with UL ECOLOGO® Certified inks in the "Printing Inks and Graphics Film" product category, see [spot.ul.com/main-app/products/catalog/](#).

³Applicable to HP Latex Inks. UL GREENGUARD Gold Certification to UL 2818 demonstrates that products are certified to UL's GREENGUARD standards for low chemical emissions into indoor air during product usage. Unrestricted room size—full decorated room, 33.4 m² (360 ft²) in an office environment, 94.6 m²(1,018 ft²) in a classroom environment. For more information, visit [ul.com/gg](#) or [greenguard.org](#).

In partnership with:





keep reinventing